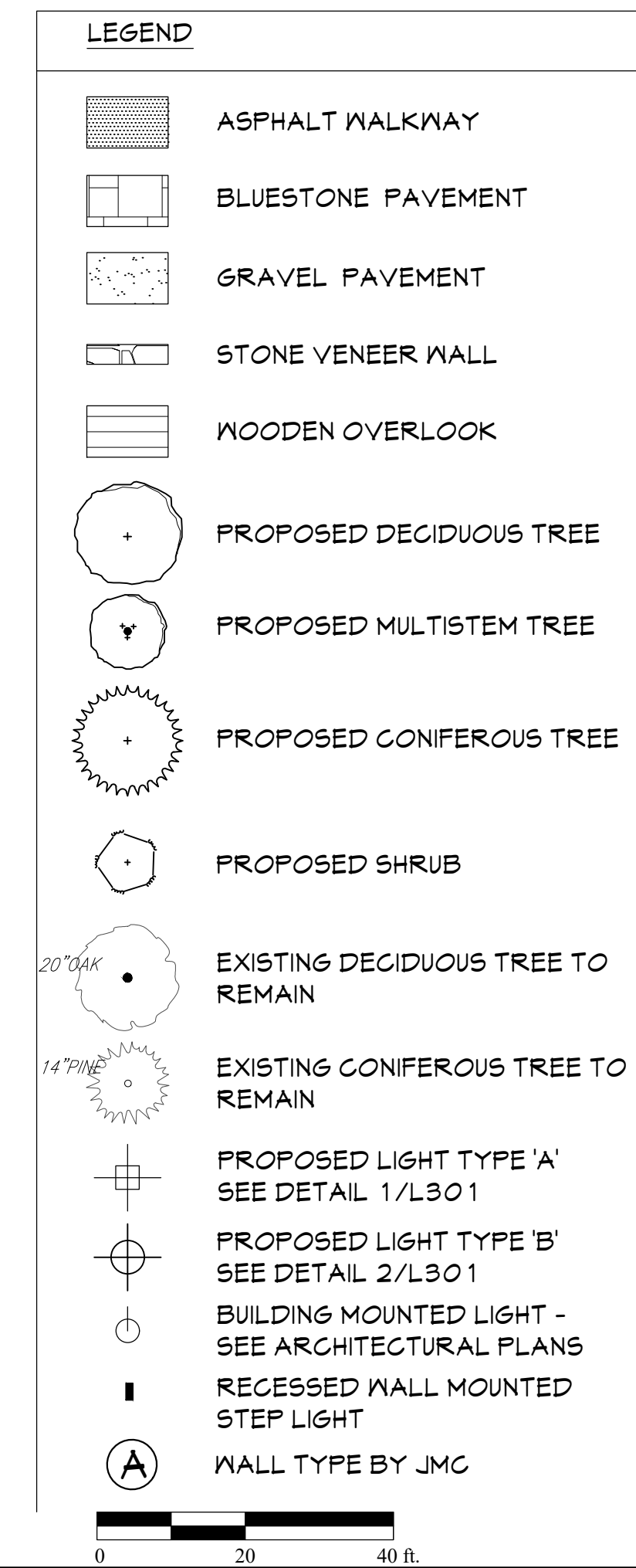


**KG+D** listen  
imagine  
build

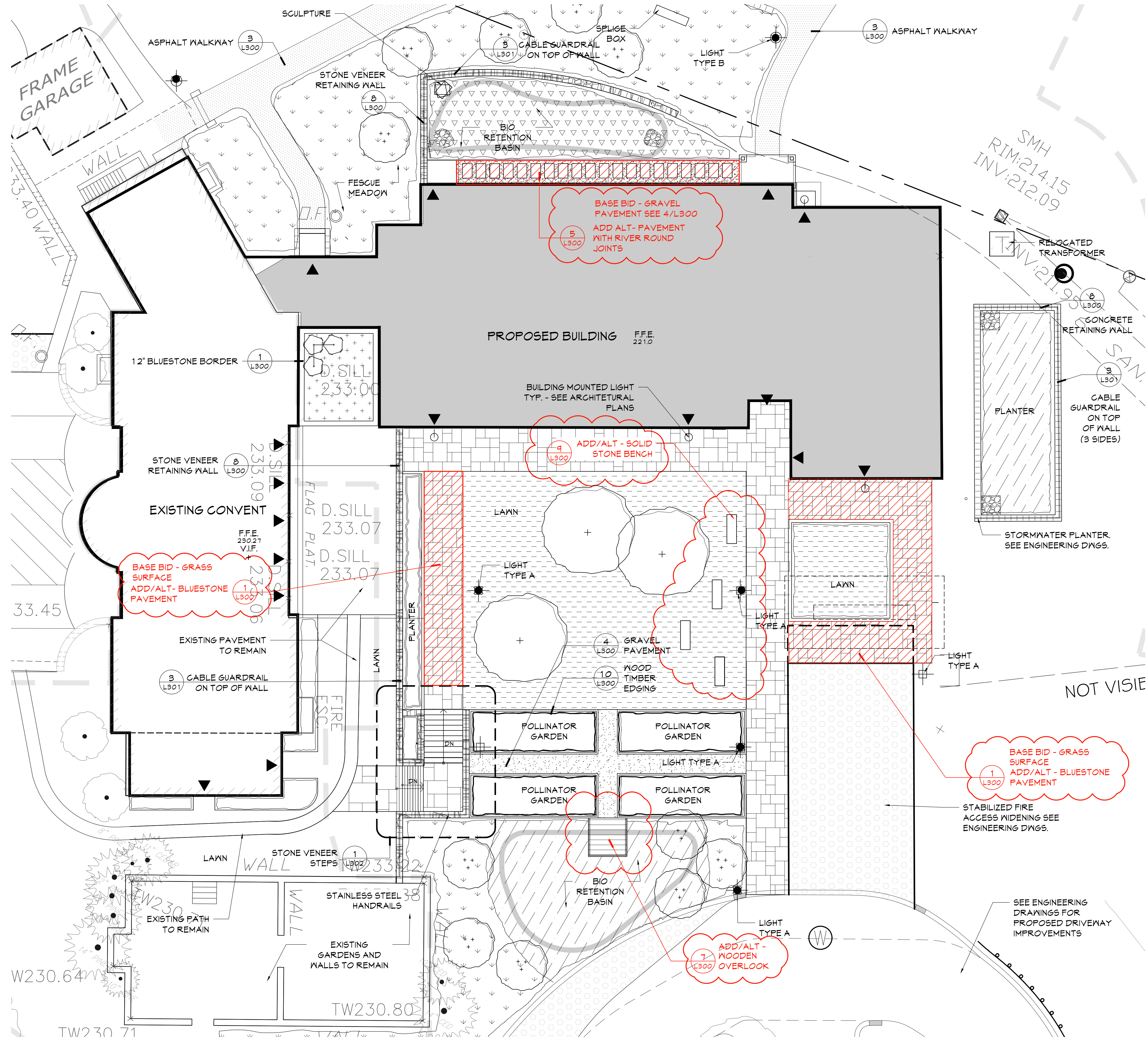
**KG+D . ARCHITECTS PC**

285 MAIN STREET MOUNT KISCO . NEW YORK . 10549  
P:914.666.5900 [KGDARCHITECTS.COM](http://KGDARCHITECTS.COM)

**IQ**  
Imbiano Quigley  
Landscape Architects, P.C.  
31 Mamaroneck Ave., 7th FL.  
White Plains, New York 10601  
admin@iqlandarch.com  
(914) 232-0200







**LEGEND**

- ASPHALT WALKWAY
- BLUESTONE PAVEMENT
- GRAVEL PAVEMENT
- STONE VENEER WALL
- WOODEN OVERLOOK
- PROPOSED DECIDUOUS TREE
- PROPOSED MULTISTEM TREE
- PROPOSED CONIFEROUS TREE
- PROPOSED SHRUB
- EXISTING DECIDUOUS TREE TO REMAIN
- EXISTING CONIFEROUS TREE TO REMAIN
- PROPOSED LIGHT TYPE 'A' SEE DETAIL 1/L301
- PROPOSED LIGHT TYPE 'B' SEE DETAIL 2/L301
- BUILDING MOUNTED LIGHT - SEE ARCHITECTURAL PLANS
- RECESSED WALL MOUNTED STEP LIGHT
- WALL TYPE BY JMC

**STREAM**  
CENTER FOR EXPERIENTIAL LEARNING  
SCHOOL OF THE HOLY CHILD  
2225 WESTCHESTER AVE,  
RYE, NY

**KG+D** listen imagine build  
KG+D . ARCHITECTS PC  
285 MAIN STREET MOUNT KISCO . NEW YORK . 10549  
P:914.666.5900 KGDARCHITECTS.COM

**SITE PLAN SUBMISSION**

**IQ**  
Imbiano .Quigley  
Landscape Architects, P.C.  
31 Mamaroneck Ave., 7th FL.  
White Plains, New York 10601  
admin@iqlandarch.com  
(914) 232-0200

**KEY PLAN**

NOTE: ALL IDEAS, DESIGNS, ARRANGEMENTS AND PLANS INDICATED OR REPRESENTED BY THIS DRAWING ARE OWNED BY AND ARE THE PROPERTY OF IMBIANO, QUIGLEY & ASSOCIATES, P.C. (IQ&A), AND WERE CREATED FOR USE ON THIS PROJECT. NONE OF SUCH IDEAS, DESIGNS, ARRANGEMENTS OR PLANS SHALL BE USED BY OR DISCLOSED TO ANY PURPOSE WHATSOEVER WITHOUT THE WRITTEN PERMISSION OF (IQ&A).

WRITTEN DIMENSIONS ON THIS DRAWING SHALL HAVE PRECEDENCE OVER SCALED DIMENSIONS. CONTRACTOR SHALL VERIFY ALL ACTUAL DIMENSIONS AND CONDITIONS ON THE JOB AND THE ARCHITECT MUST BE NOTIFIED OF ANY VARIATIONS FROM DIMENSIONS AND CONDITIONS SHOWN. SHOP DETAILS MUST BE SUBMITTED TO THIS OFFICE FOR APPROVAL BEFORE PROCEEDING WITH FABRICATION.

ALTERATIONS BY ANY PERSON, IN ANY WAY, OF ANY ITEM CONTAINED ON THIS DOCUMENT, UNLESS ACTING UNDER THE DIRECTION OF THE LICENSED ARCHITECT IMBIANO, QUIGLEY & ASSOCIATES, P.C. (IQ&A), IS A VIOLATION OF TITLE V&A, SECT. 60-B (3) OF NEW YORK STATE LAW. COPYRIGHT IMBIANO, QUIGLEY & ASSOCIATES, P.C. ALL RIGHTS RESERVED.

Professional Seal



8	8/12/2021	ISSUED FOR CONSTRUCTION
7	6/25/2021	ISSUED FOR PERMIT
6	2/24/2021	BID ISSUE
5	5/8/2020	90% CONSTRUCTION DOCUMENTS
4	2/25/2020	REVISED FOR TB/IB APPROVAL
3	2/21/2020	DESIGN DEVELOPMENT SET
2	1/02/2020	SCHEMATIC DESIGN SET
1	11/26/2019	SITE PLAN SUBMISSION
No.	Date	Issue

**COURTYARD MATERIALS PLAN**

Job No.	2018-1022	Date	08/28/2019
Scale	1"=10'	Drawn / Checked	OV/JAI

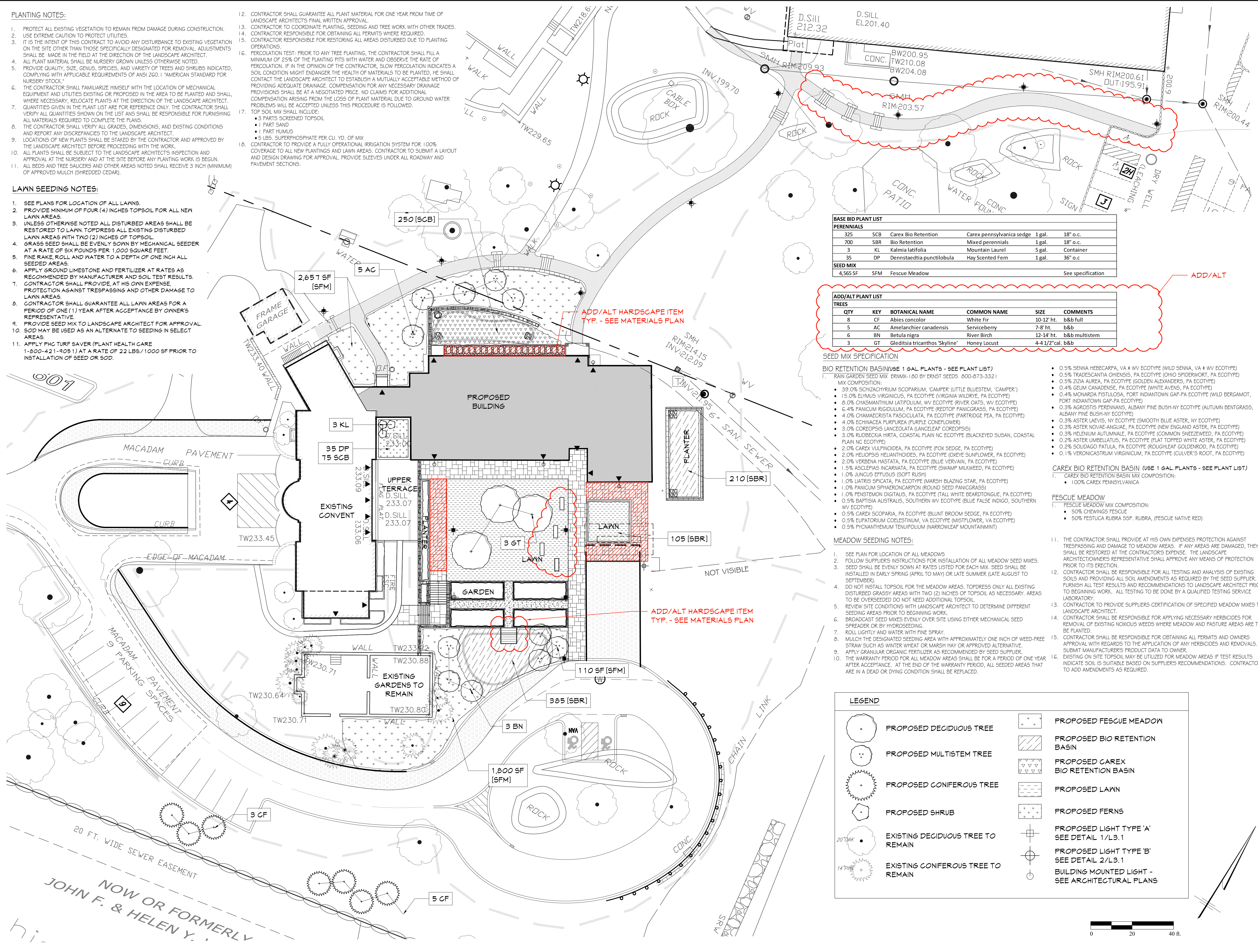
Sheet Number  
**L101**



2. PROTECT ALL EXISTING VEGETATION TO REMAIN FROM DAMAGE DURING CONSTRUCTION.
3. USE EXTREME CAUTION TO PROTECT UTILITIES.
4. IT IS THE INTENT OF THIS CONTRACT TO AVOID ANY DISTURBANCE TO EXISTING VEGETATION ON THE SITE OTHER THAN THOSE SPECIFICALLY DESIGNATED FOR REMOVAL. ADJUSTMENTS SHALL BE MADE IN THE FIELD AT THE DIRECTION OF THE LANDSCAPE ARCHITECT.
5. ALL MATERIALS SHALL BE PURCHASED FROM A REPUTABLE SUPPLIER UNLESS OTHERWISE NOTED.
6. PROVIDE QUALITY, SIZE, GENUS, SPECIES, AND VARIETY OF TREES AND SHRUBS INDICATED COMPLYING WITH APPLICABLE REQUIREMENTS OF ANSI Z60.1 "AMERICAN STANDARD FOR NURSERY STOCK."
7. THE CONTRACTOR SHALL FAMILIARIZE HIMSELF WITH THE LOCATION OF MECHANICAL EQUIPMENT AND UTILITIES EXISTING OR PROPOSED IN THE AREA TO BE PLANTED AND SHALL, WHERE NECESSARY, RELOCATE PLANTS AT THE DIRECTION OF THE LANDSCAPE ARCHITECT.
8. THE CONTRACTOR SHALL VERIFY ALL QUANTITIES AND GRADES BEFORE THE CONTRACTOR SHALL VERIFY ALL QUANTITIES SHOWN ON THE LIST AND SHALL BE RESPONSIBLE FOR FURNISHING ALL MATERIALS REQUIRED TO COMPLETE THE PLANT.
9. THE CONTRACTOR SHALL VERIFY ALL GRADES, DIMENSIONS, AND EXISTING CONDITIONS AND REPORT ANY DISCREPANCIES TO THE LANDSCAPE ARCHITECT.
10. LOCATIONS OF NEW PLANTS SHALL BE STAKED BY THE CONTRACTOR AND APPROVED BY THE LANDSCAPE ARCHITECT BEFORE PROCEEDING WITH THE WORK.
11. PLANTING SHALL BE SUBMITTED TO THE LANDSCAPE ARCHITECT FOR INSPECTION AND APPROVAL AT THE NURSERY AND AT THE SITE BEFORE ANY PLANTING WORK IS BEGUN.
12. ALL BEDS AND TREE SAUCERS AND OTHER AREAS NOTED SHALL RECEIVE 3 INCH (MINIMUM) OF APPROVED MULCH (SHREDDED CEDAR).

1. SEE PLANS FOR LOCATION OF ALL LAWNS.
2. PROVIDE MINIMUM OF FOUR (4) INCHES TOPSOIL FOR ALL NEW LAWN AREAS.
3. UNLESS OTHERWISE NOTED ALL DISTURBED AREAS SHALL BE RESTORED TO LAWN TOPDRESS EXISTING DISTURBED LAWN AREAS WITH TWO (2) INCHES OF TOPDRESS.
4. GRASS SEED SHALL BE EVENLY SOYD BY MECHANICAL SEEDER AT A RATE OF SIX POUNDS PER 1,000 SQUARE FEET.
5. FINE RAKE, ROLL AND WATER TO A DEPTH OF ONE INCH ALL SEEDED AREAS.
6. APPLY GROUND LIMESTONE AND FERTILIZER AT RATES AS RECOMMENDED BY MANUFACTURER AND SOIL TEST RESULTS.
7. CONTRACTOR SHALL PROVIDE, AT HIS OWN EXPENSE, PROTECTION AGAINST TRESPASSING AND OTHER DAMAGE TO LAWN AREAS.
8. CONTRACTOR SHALL GUARANTEE ALL LAWN AREAS FOR A PERIOD OF ONE (1) YEAR AFTER ACCEPTANCE BY OWNER'S REPRESENTATIVE.
9. PROVIDE SEED MIX TO LANDSCAPE ARCHITECT FOR APPROVAL.
10. SOD MAY BE USED AS AN ALTERNATE TO SEEDING IN SELECT AREAS.
11. APPLY PHC TURF SAYER (PLANT HEALTH CARE 1-800-421-1905) AT A RATE OF 22 LBS / 1000 SF PRIOR TO INSTALLATION OF SEED OR SOD.

12. CONTRACTOR SHALL GUARANTEE ALL PLANT MATERIAL FOR ONE YEAR FROM TIME OF LANDSCAPE ARCHITECT'S FINAL WRITTEN APPROVAL.
13. CONTRACTOR TO COORDINATE PLANTING, SEEDING AND TREE WORK WITH OTHER TRADES.
14. CONTRACTOR RESPONSIBLE FOR OBTAINING ALL PERMITS WHERE REQUIRED.
15. CONTRACTOR RESPONSIBLE FOR RESTORING ALL AREAS DISTURBED DUE TO PLANTING OPERATIONS.
16. PERCOLATION TEST: PRIOR TO ANY TREE PLANTING, THE CONTRACTOR SHALL PILE A MINIMUM OF 25% OF THE PLANTING PITS WITH WATER AND OBSERVE THE RATE OF PERCOLATION. IF IN THE OPINION OF THE CONTRACTOR, SLOW PERCOLATION INDICATES A SOIL CONDITION MIGHT ENDANGER THE HEALTH OF MATERIALS TO BE PLANTED, HE SHALL CONTACT THE LANDSCAPE ARCHITECT TO ESTABLISH A MUTUALLY ACCEPTABLE METHOD OF PROVIDING ADEQUATE DRAINAGE. COMPENSATION FOR ANY NECESSARY DRAINAGE PROVISIONS SHALL BE AT A NEGOTIATED PRICE. NO CLAIMS FOR ADDITIONAL COMPENSATION ARISING FROM THE LOSS OF PLANT MATERIAL DUE TO GROUND WATER PROBLEMS WILL BE ACCEPTED UNLESS THIS PROCEDURE IS FOLLOWED.
17. SOIL MIX SHALL INCLUDE:
  - 3 PARTS SCREENED TOPSOIL
  - 1 PART SAND
  - 1 PART HUMUS
  - 5 LBS. SUPERPHOSPHATE PER CU. YD. OF MIX
18. CONTRACTOR TO PROVIDE A FULLY OPERATIONAL IRRIGATION SYSTEM FOR 100% COVERAGE TO ALL NEW PLANTINGS AND LAWN AREAS. CONTRACTOR TO SUBMIT A LAYOUT AND DESIGN DRAWING FOR APPROVAL. PROVIDE SLEEVES UNDER ALL ROADWAY AND PAVEMENT SECTIONS.



**KG+D** listen  
imagine  
build

**KG+D . ARCHITECTS PC**  
285 MAIN STREET MOUNT KISCO . NEW YORK . 10549  
P:914.666.5900 [KGDARCHITECTS.COM](http://KGDARCHITECTS.COM)

Imbiano Quigley  
Landscape Architects, P.C.  
1 Mamaroneck Ave., 7th Fl.  
White Plains, New York 10606  
admin@iqlandarch.com  
(914) 232-0200

NOTE: ALL IDEAS, DESIGNS, ARRANGEMENTS AND PLANS INDICATED OR REPRESENTED BY THIS DRAWING ARE OWNED BY AND ARE THE PROPERTY OF KAEYER, GARMENT, & DAVIDSON ARCHITECTS, PC (KG&D), AND WERE CREATED FOR USE ON THIS PROJECT. NONE OF SUCH IDEAS, DESIGNS, ARRANGEMENTS OR PLANS SHALL BE USED BY OR DISCLOSED TO ANY PURPOSE WHATSOEVER WITHOUT THE WRITTEN PERMISSION OF (KG&D).

WRITTEN DIMENSIONS ON THIS DRAWING SHALL HAVE PRECEDENCE OVER SCALED DIMENSIONS. CONTRACTOR SHALL VERIFY ALL ACTUAL DIMENSIONS AND CONDITIONS ON THE JOB AND THE ARCHITECT MUST BE NOTIFIED OF ANY VARIATIONS FROM DIMENSIONS AND CONDITIONS SHOWN. SHOP DETAILS MUST BE SUBMITTED TO THIS OFFICE FOR APPROVAL BEFORE PROCEEDING WITH FABRICATION.

ALTERATIONS BY ANY PERSON, IN ANY WAY, OF ANY ITEM CONTAINED ON THIS DOCUMENT, UNLESS ACTING UNDER THE DIRECTION OF THE LICENCED ARCHITECT WHOSE PROFESSIONAL SEAL IS AFFIXED HERETO, IS A VIOLATION OF TITLE VII, SECT. §9.5 (b) OF NEW YORK STATE LAW.  
COPYRIGHT KAEYER, GARMENT + DAVIDSON ARCHITECTS & ENGINEERS, PC  
ALL RIGHTS RESERVED.

Professional Seal



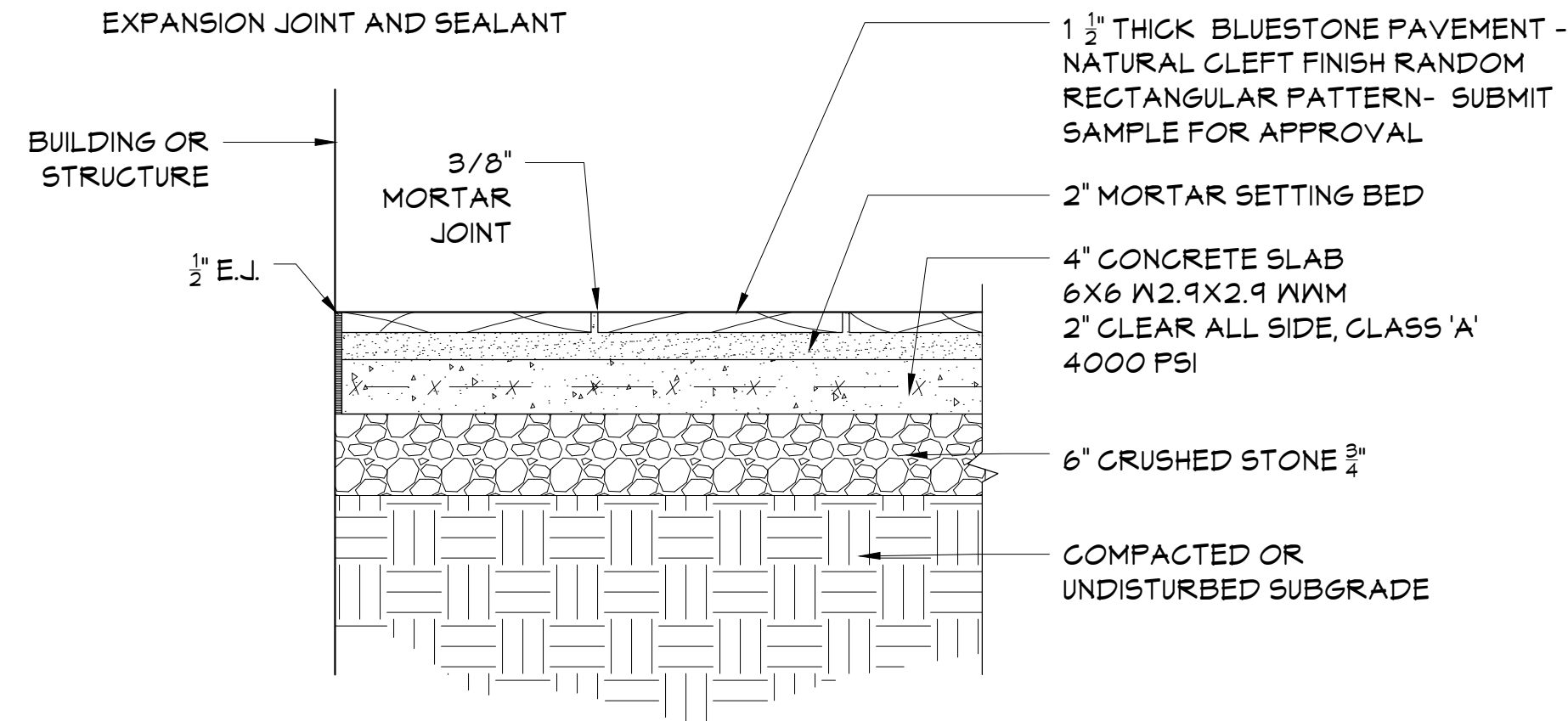
8	8/12/2021	ISSUED FOR CONSTRUCTION
7	6/25/2021	ISSUED FOR PERMIT
6	2/24/2021	BID ISSUE
5	5/8/2020	90% CONSTRUCTION DOCUMENTS
4	2/25/2020	REVISED FOR TB/PB APPROVAL
3	2/21/2020	DESIGN DEVELOPMENT SET
2	1/02/2020	SCHEMATIC DESIGN SET
1	11/26/2019	SITE PLAN SUBMISSION
No.	Date	Issue

Job No. 2018-1022	Date 08/28/2019
Scale 1"=20'	Drawn / Checked OV/JAI
Sheet Number	

# L200

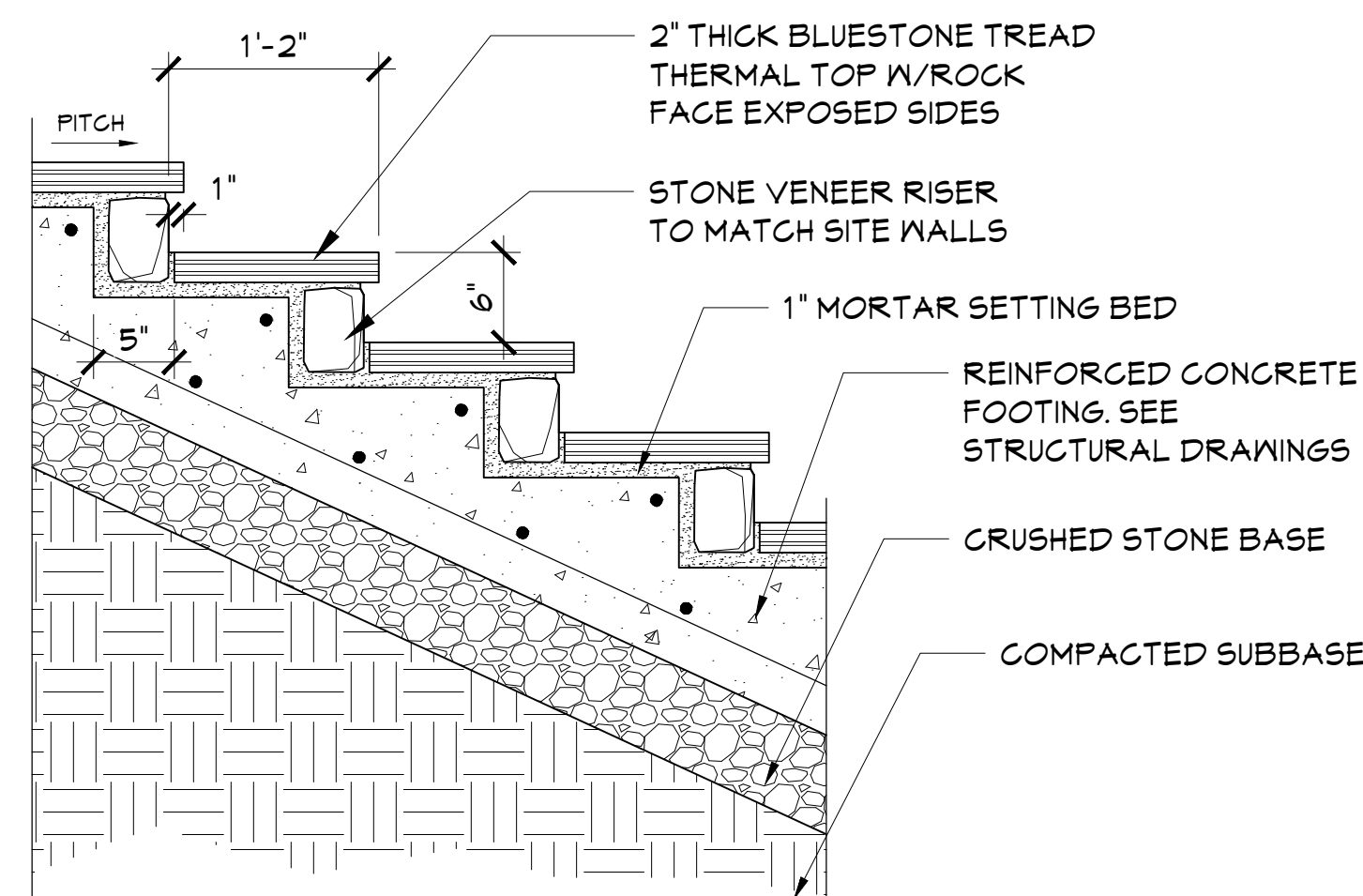


- NOTES:
1. PROVIDE 4'X4' SAMPLE FOR APPROVAL PRIOR TO PROCEEDING WITH WORK
  2. WHERE PAVEMENT MEETS EXISTING OR PROPOSED STRUCTURES PROVIDE FULL DEPTH PREMOLDED, NON BITUMINOUS, NON-EXTRUDING EXPANSION JOINT AND  $\frac{3}{8}$ " DEPTH SEALANT - ADD BOND BREAKER TAPE BETWEEN EXPANSION JOINT AND SEALANT



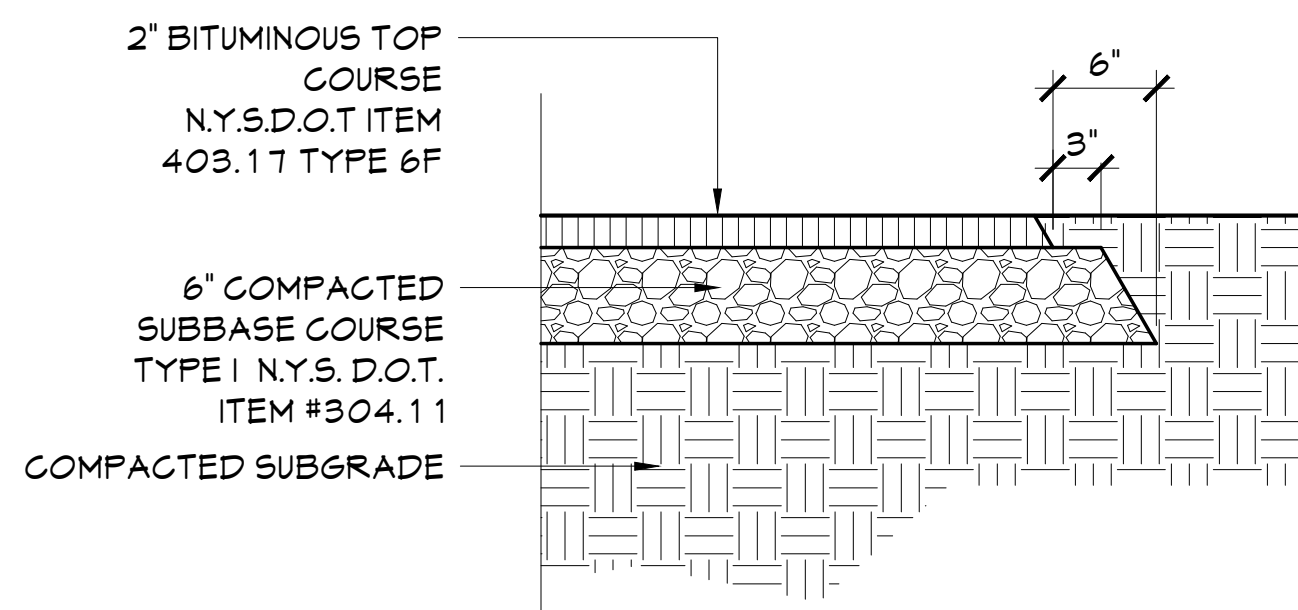
## 1 BLUESTONE PAVEMENT

SCALE: 1"=1'-0"



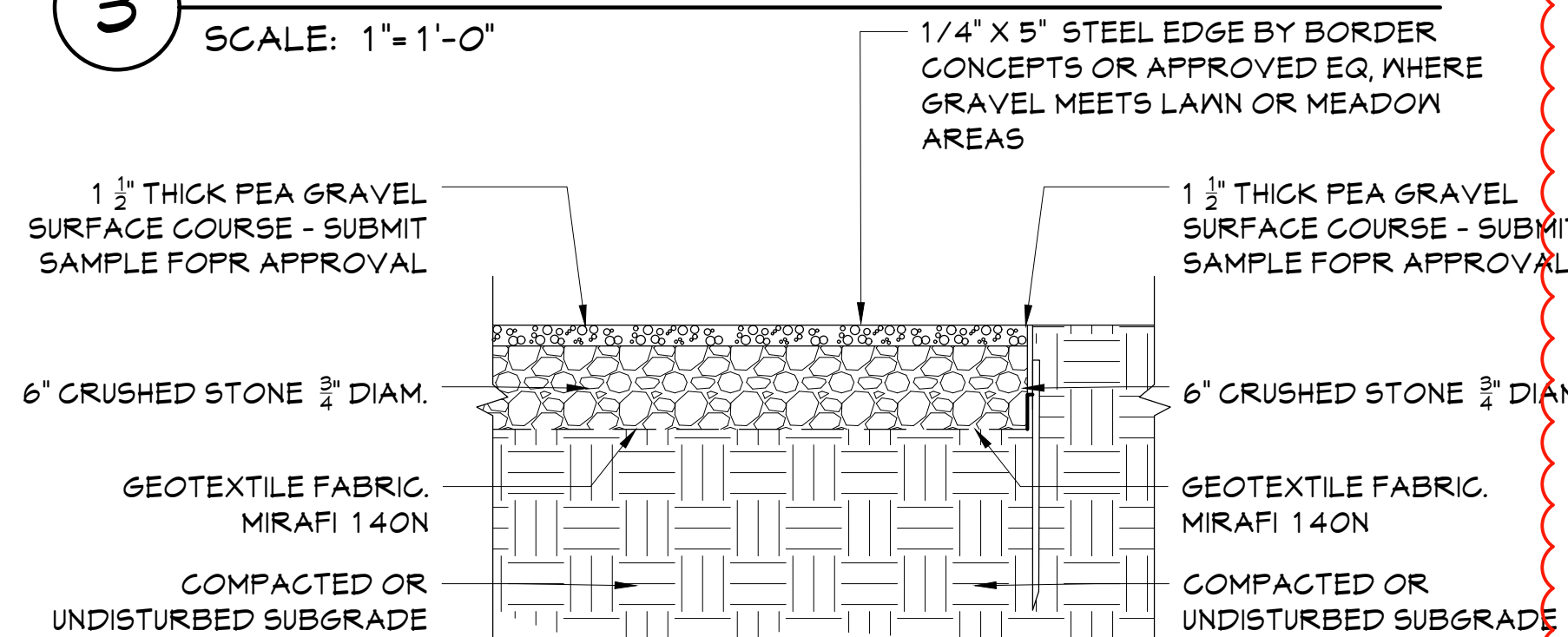
## 2 STONE VENEER STEPS

SCALE: 1"=1'-0"



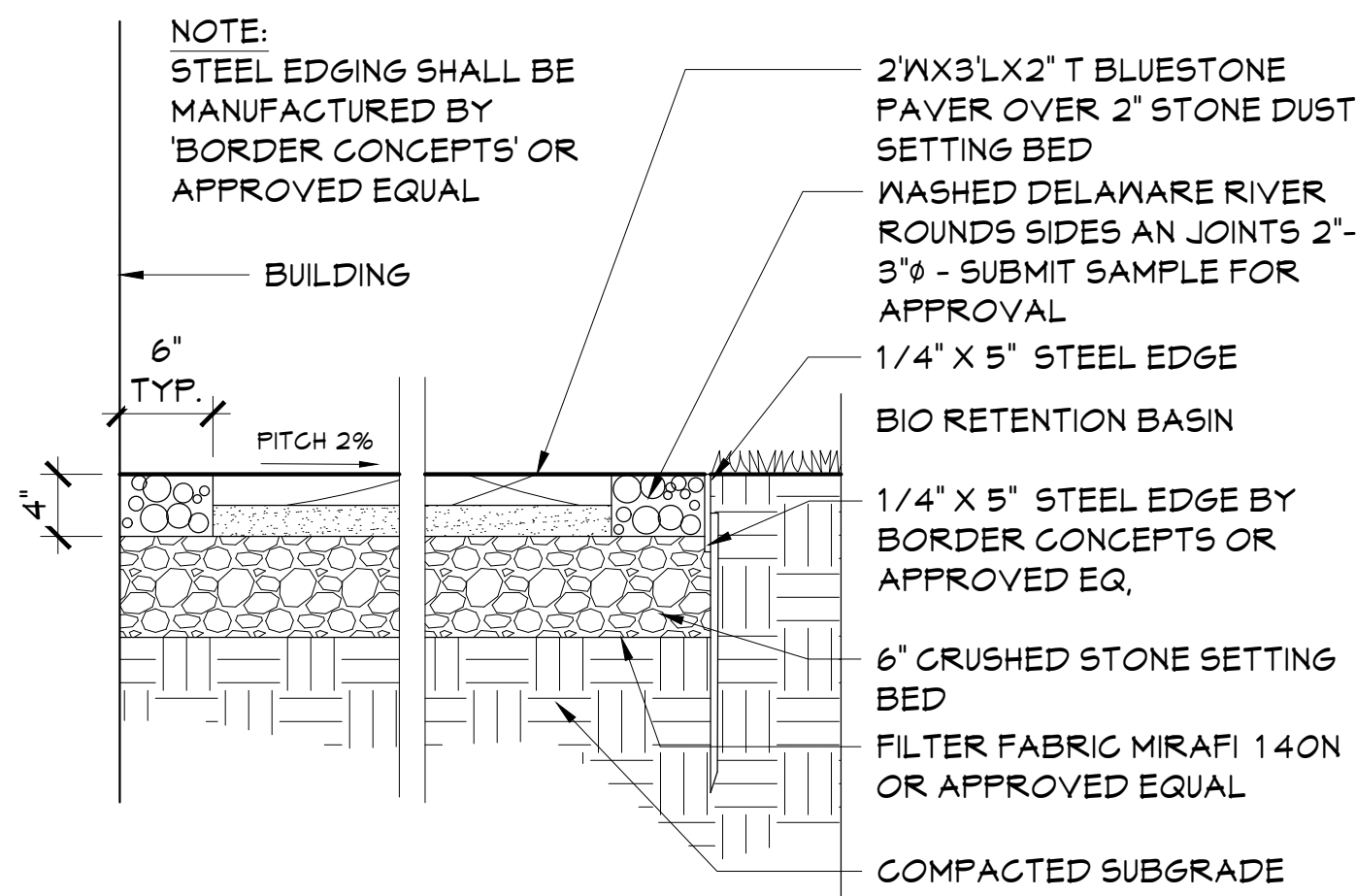
## 3 ASPHALT WALKWAY

SCALE: 1"=1'-0"



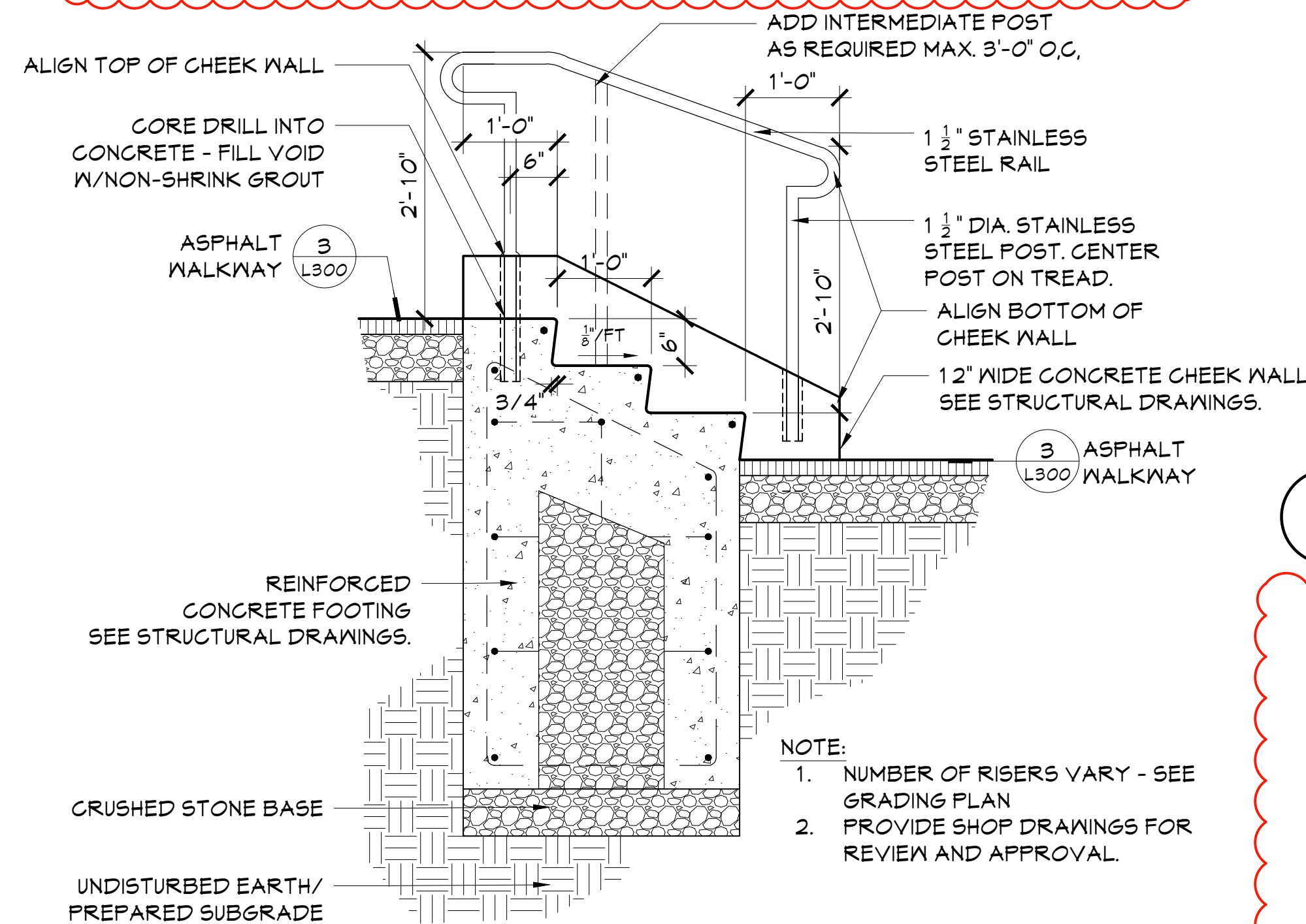
## 4 GRAVEL PAVEMENT

SCALE: 1"=1'-0"



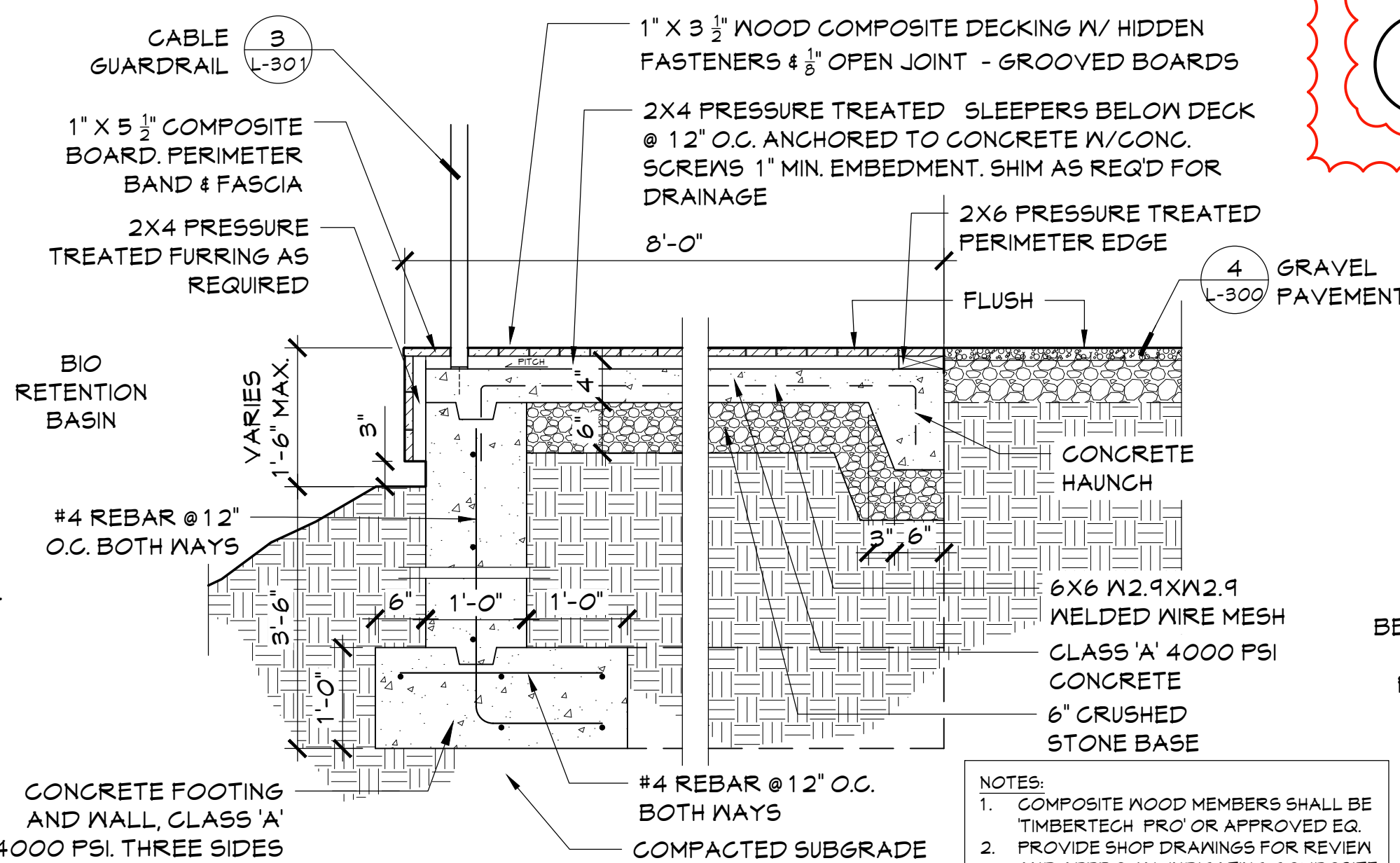
## 5 PAVEMENT WITH RIVER ROUND JOINTS

SCALE: 1"=1'-0"



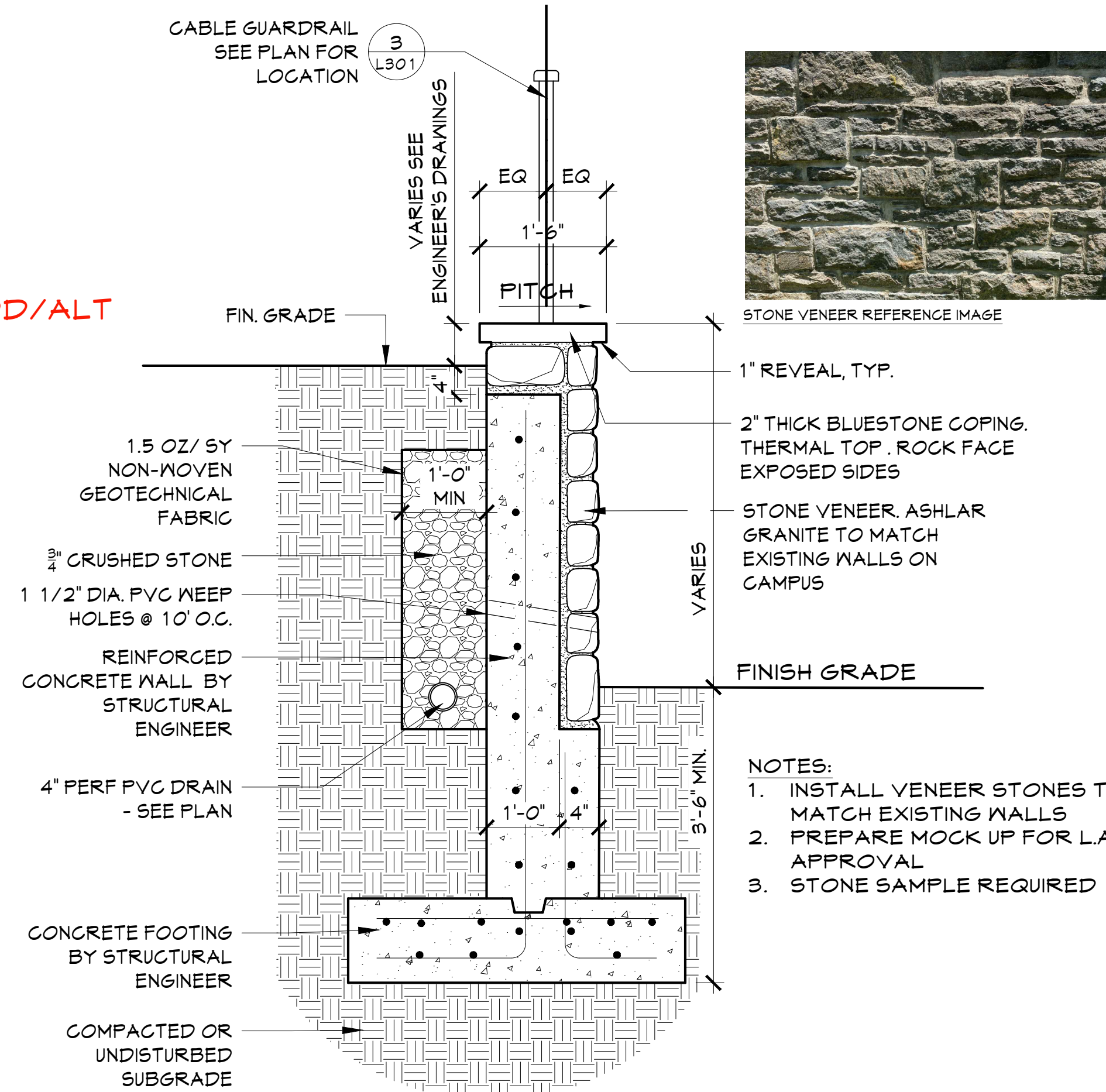
## 6 CONCRETE STEPS W/ HANDRAIL

SCALE: 3/4"=1'-0"



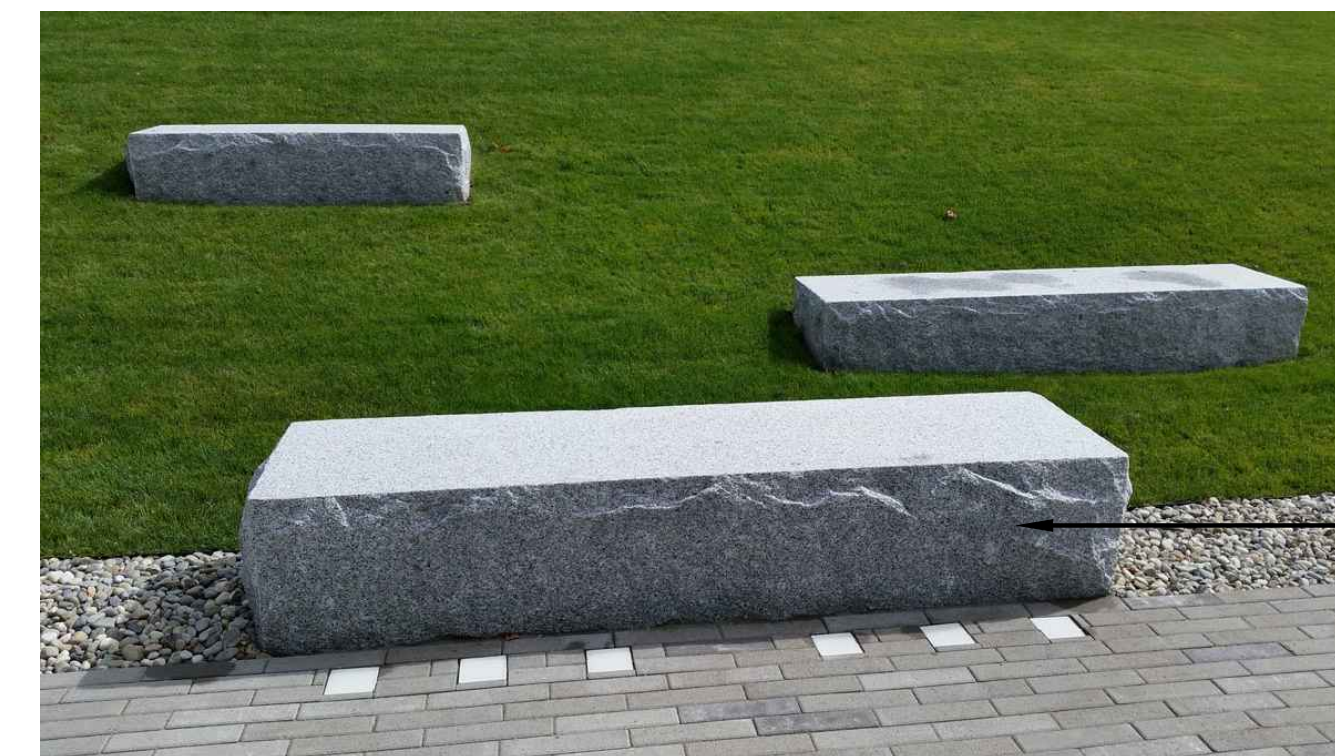
## 7 WOODEN OVERLOOK

SCALE: 1"=1'-0"



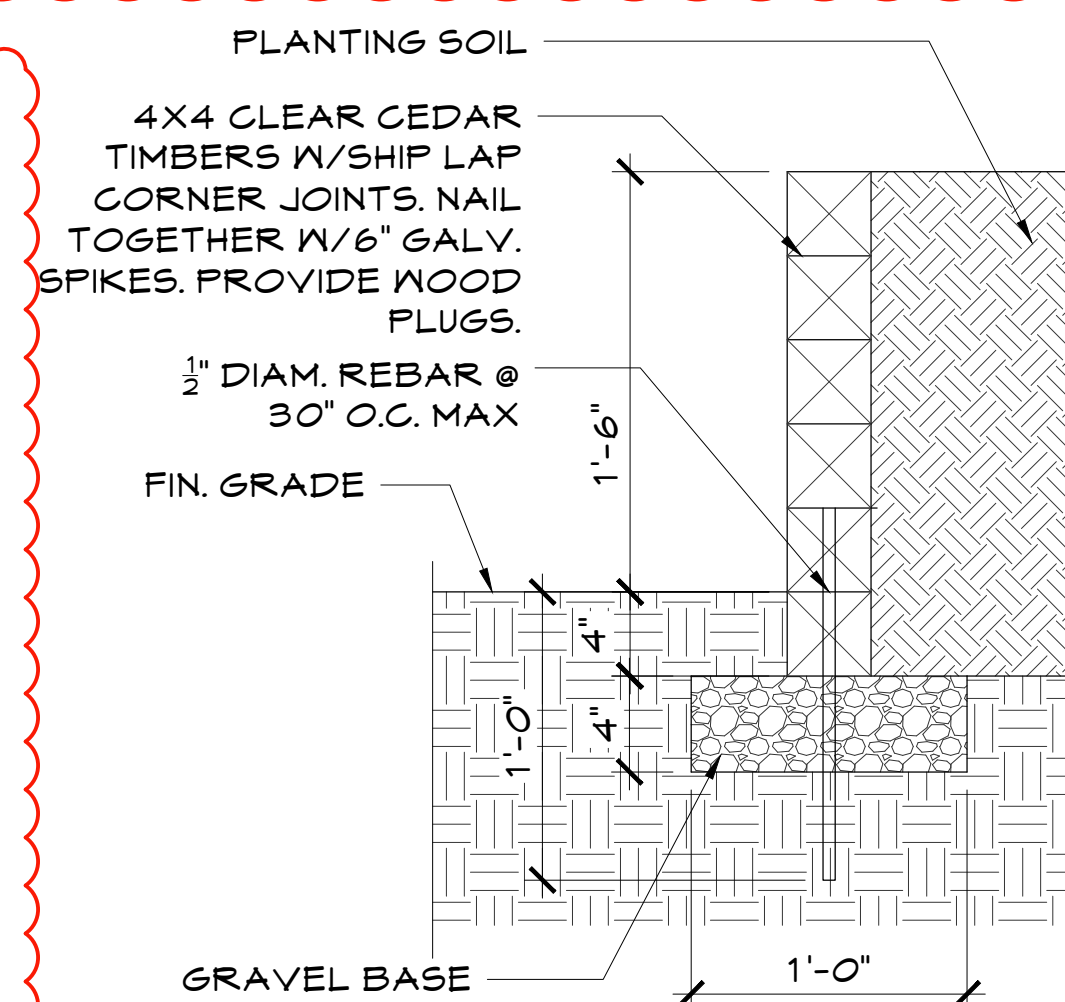
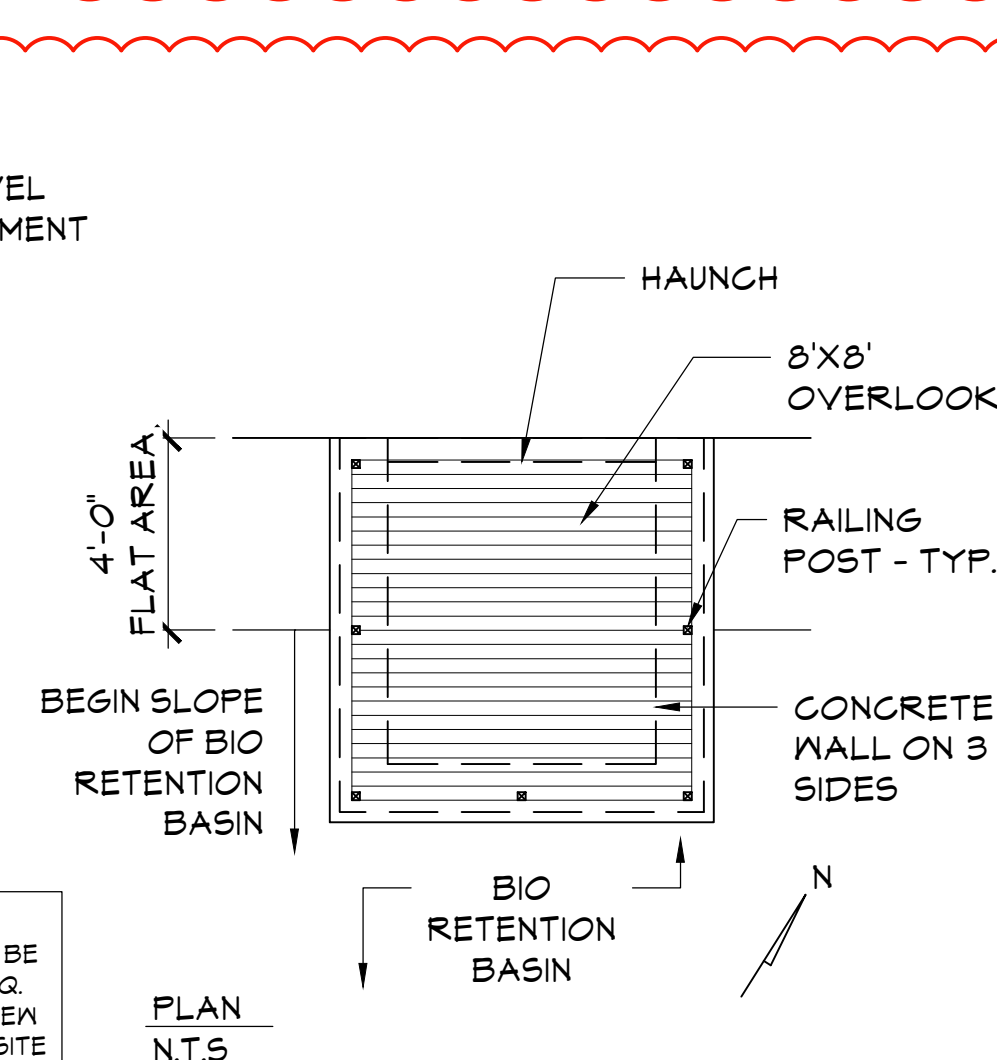
## 8 STONE VENEER RETAINING WALL

SCALE: 3/4"=1'-0"



## 9 SOLID STONE BENCH

SCALE: N.T.S.



## 10 WOOD TIMBER EDGING

SCALE: 1 1/2"=1'-0"

STREAM  
CENTER FOR  
EXPERIENTIAL LEARNING  
SCHOOL OF THE HOLY  
CHILD  
2225 WESTCHESTER AVE,  
RYE, NY

**KG+D** listen  
imagine  
build  
KG+D . ARCHITECTS PC  
285 MAIN STREET MOUNT KISCO, NEW YORK, 10549  
P:914.666.5900 KGDARCHITECTS.COM

SITE PLAN SUBMISSION

**IQ**

Imbiano -Quigley  
Landscape Architects, P.C.  
31 Mamaroneck Ave., 7th FL.  
White Plains, New York 10601  
admin@iqlandarch.com  
(914) 232-0200

KEY PLAN

NOTE: ALL IDEAS, DESIGNS, ARRANGEMENTS AND PLANS INDICATED OR REPRESENTED BY THIS DRAWING ARE OWNED BY AND ARE THE PROPERTY OF IMBIANO -QUIGLEY ARCHITECTS, P.C. (IQ), AND WERE CREATED FOR USE ON THIS PROJECT. NONE OF SUCH IDEAS, DESIGNS, ARRANGEMENTS OR PLANS SHALL BE USED BY OR DISCLOSED TO ANY PURPOSE WHATSOEVER WITHOUT THE WRITTEN PERMISSION OF (KG+D).

WRITTEN DIMENSIONS ON THIS DRAWING SHALL HAVE PRECEDENCE OVER SCALED DIMENSIONS. CONTRACTOR SHALL VERIFY ALL ACTUAL DIMENSIONS AND CONDITIONS ON THE JOB AND THE ARCHITECT MUST BE NOTIFIED OF ANY VARIATIONS FROM DIMENSIONS AND CONDITIONS SHOWN. SHOP DETAILS MUST BE SUBMITTED TO THIS OFFICE FOR APPROVAL BEFORE PROCEEDING WITH FABRICATION.

ALTERATIONS BY ANY PERSON, IN ANY WAY, OF ANY ITEM CONTAINED ON THIS DOCUMENT, UNLESS ACTING UNDER THE DIRECTION OF THE LICENSED ARCHITECT IMBIANO -QUIGLEY ARCHITECTS, P.C. (IQ), IS A VIOLATION OF TITLE V, SECTION 60.1 (b) OF NEW YORK STATE LAW. COPYRIGHT IMBIANO -QUIGLEY ARCHITECTS & ENGINEERS, P.C. ALL RIGHTS RESERVED.

Professional Seal

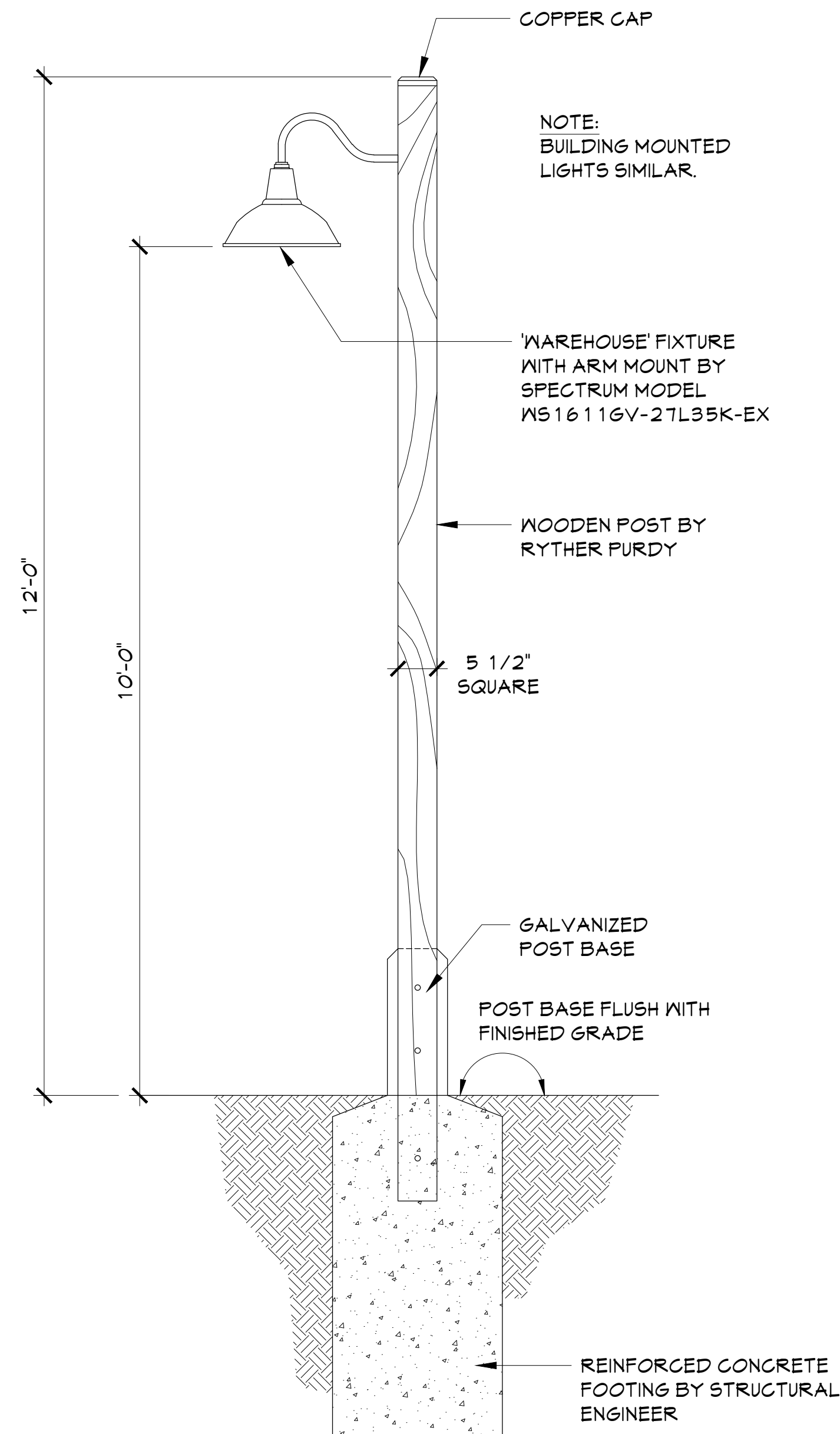


No.	Date	Issue
8	8/12/2021	ISSUED FOR CONSTRUCTION
7	6/25/2021	ISSUED FOR PERMIT
6	2/24/2021	BID ISSUE
5	5/8/2020	90% CONSTRUCTION DOCUMENTS
4	2/25/2020	REVISED FOR TB/PB APPROVAL
3	2/21/2020	DESIGN DEVELOPMENT SET
2	1/02/2020	SCHEMATIC DESIGN SET
1	11/26/2019	SITE PLAN SUBMISSION

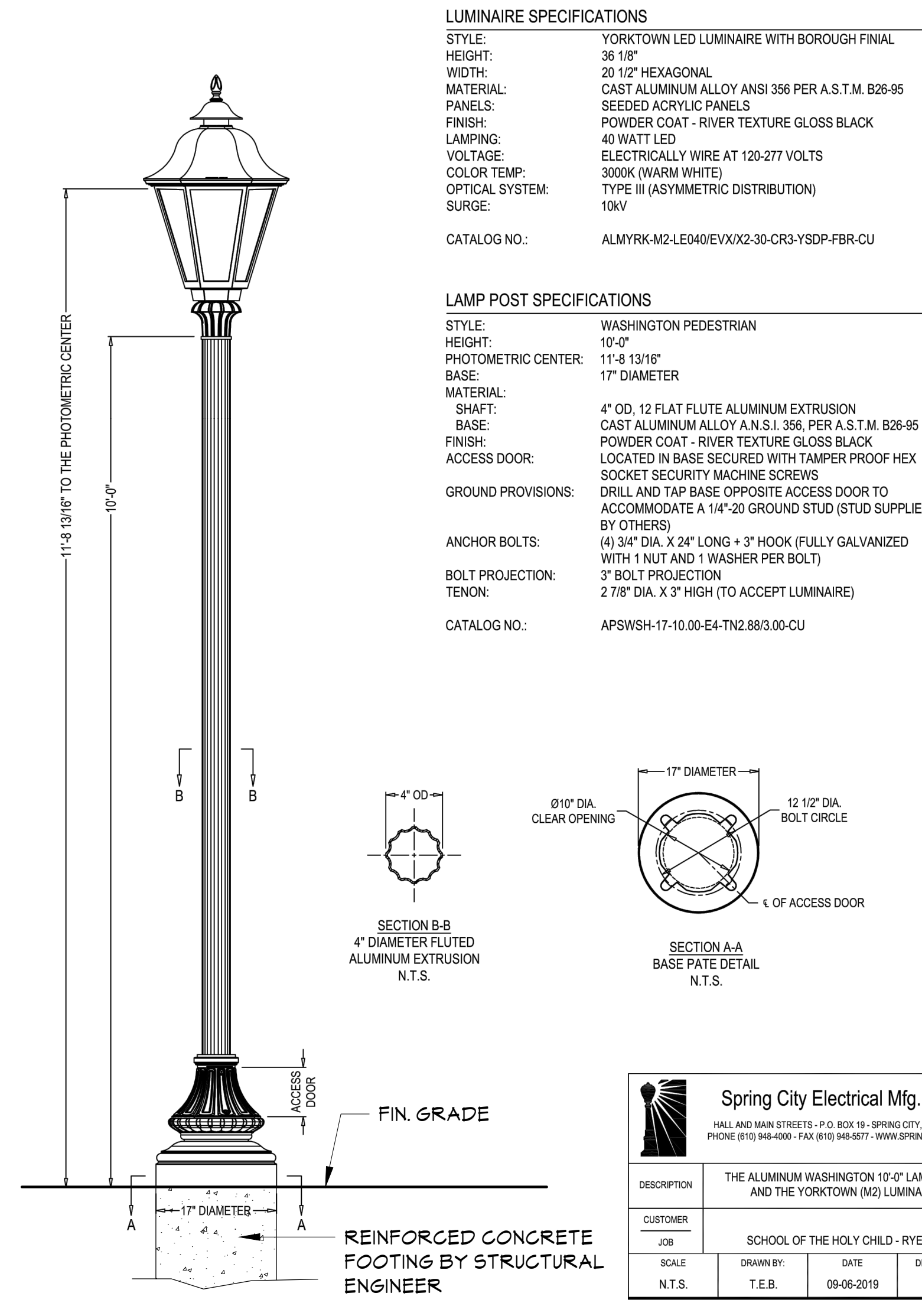
SITE DETAILS

Job No.	2018-1022	Date	08/28/2019
Scale	AS SHOWN	Drawn / Checked	OVI/JAI
Sheet Number	L300		

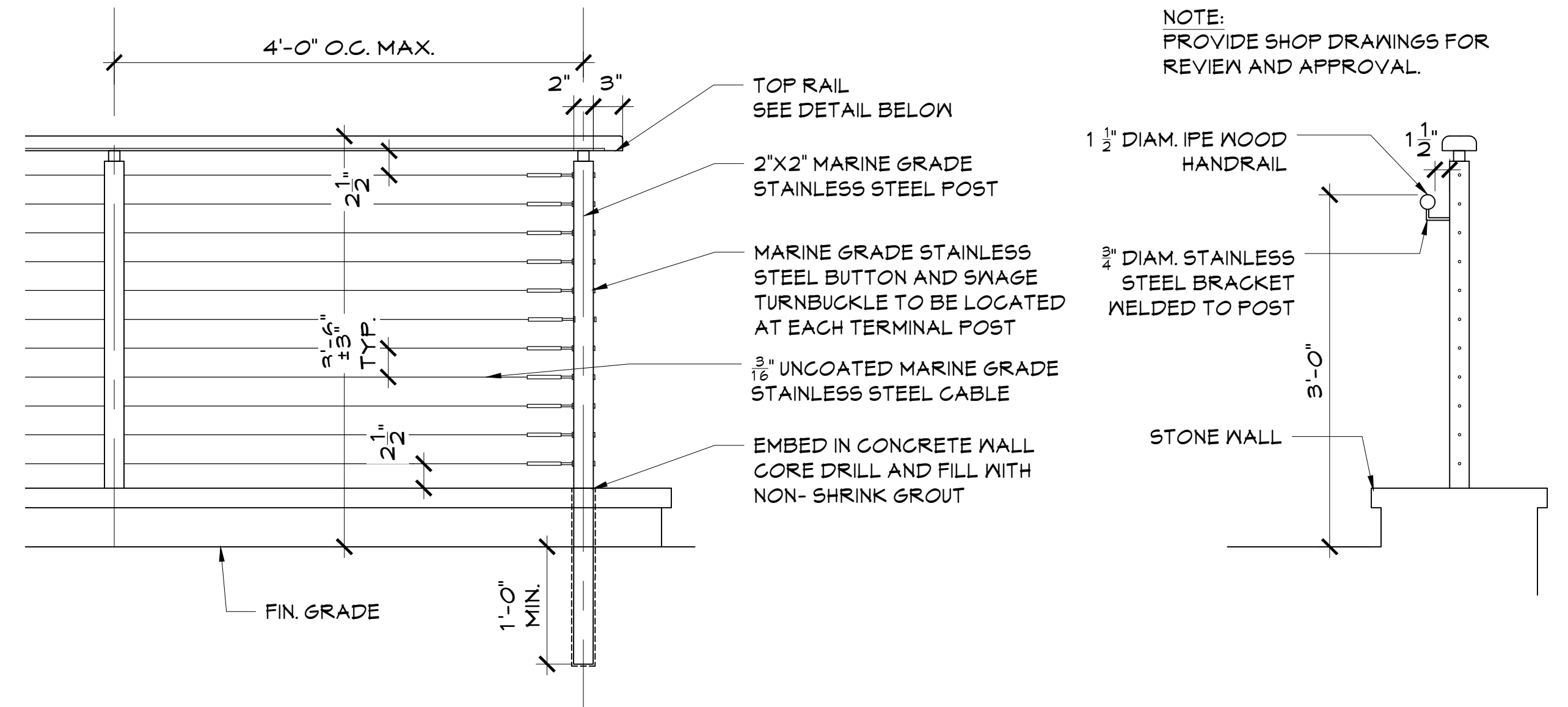




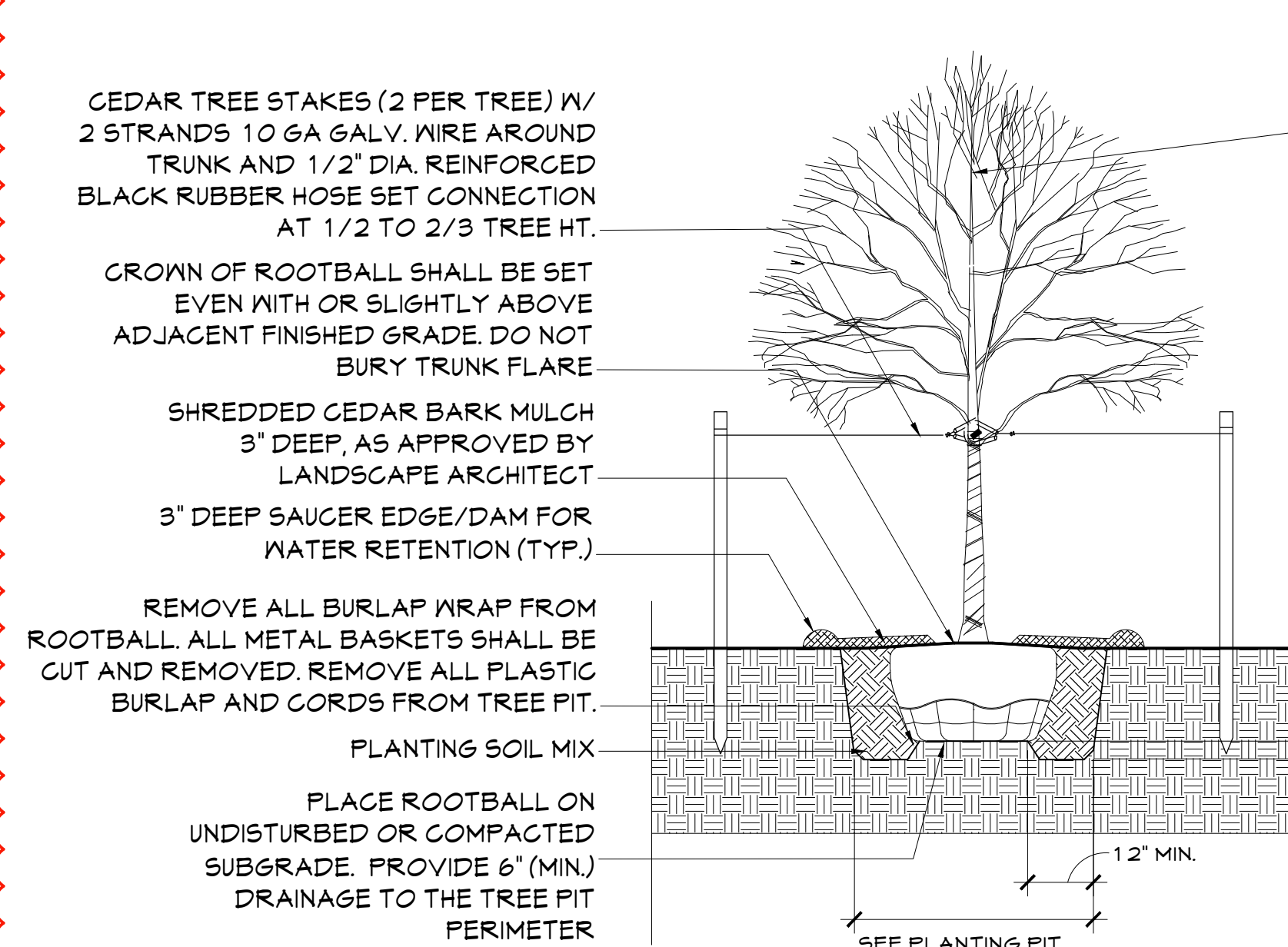
**1 SITE LIGHTING TYPE 'A'**  
SCALE: N.T.S.



**2 SITE LIGHTING TYPE 'B'**  
SCALE: N.T.S.



**3 CABLE GUARDRAIL**  
SCALE: N.T.S.



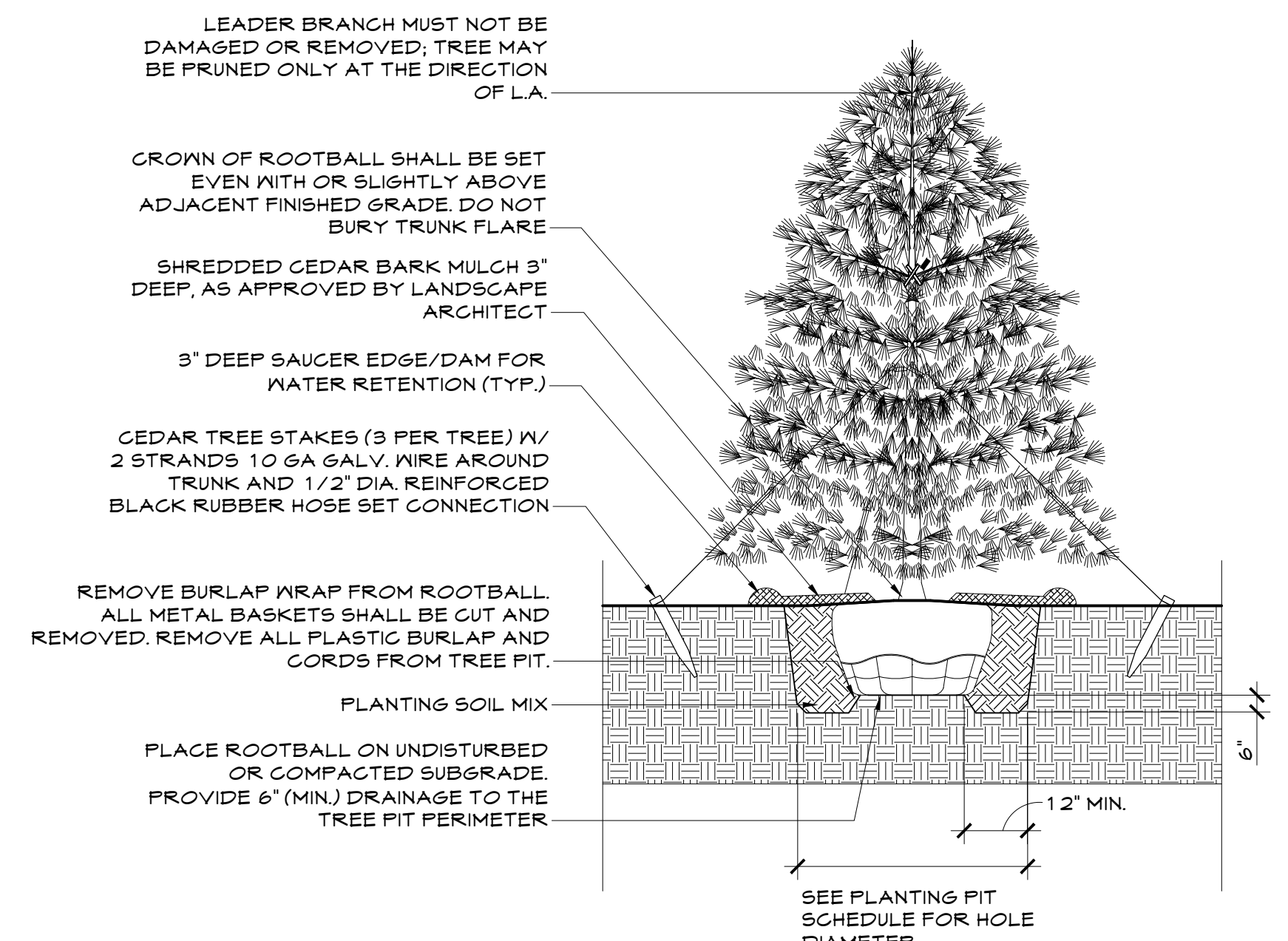
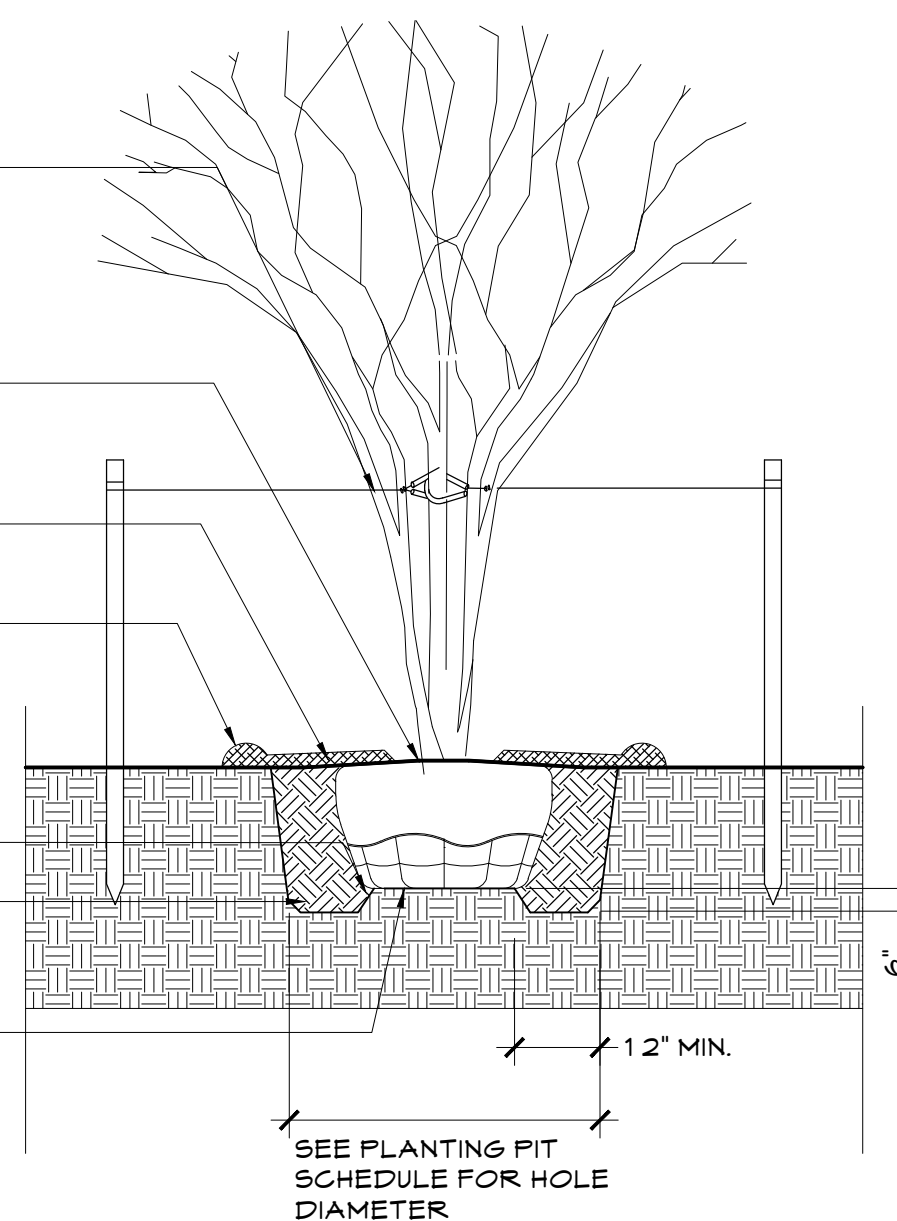
**4 DECIDUOUS TREE PLANTING**  
SCALE: N.T.S.

LEADER BRANCH MUST NOT BE DAMAGED OR REMOVED; TREE MAY BE PRUNED ONLY AT THE DIRECTION OF L.A.

PLANTING PIT SCHEDULE		
ROOT BALL SIZE	HOLE DIAMETER	DEPTH BELOW BOTTOM OF ROOT BALL
LESS THAN 4 FT DIA.	2X BALL DIA.	6 IN.
4-5 FT DIA.	1-3/4X BALL DIA.	8 IN.
OVER 5 FT DIA.	1 1/2X BALL DIA.	8 IN.

CEDAR TREE STAKES (2 PER TREE) W/ 2 STRANDS 10 GA. GALV. WIRE AROUND TRUNK AND 1/2\"/>

**5 DECIDUOUS MULTI STEM TREE PLANTING**  
SCALE: N.T.S.



**6 DECIDUOUS MULTI STEM TREE PLANTING**  
SCALE: N.T.S.

**STREAM**  
CENTER FOR  
EXPERIENTIAL LEARNING  
SCHOOL OF THE HOLY  
CHILD  
2225 WESTCHESTER AVE,  
RYE, NY

**KG+D** listen  
imagine  
build  
KG+D . ARCHITECTS PC  
285 MAIN STREET MOUNT KISCO, NEW YORK . 10549  
P:914.666.5900 KGDARCHITECTS.COM

**SITE PLAN SUBMISSION**

**IQ**  
Imbiano -Quigley  
Landscape Architects, P.C.  
31 Mamaroneck Ave., 7th FL.  
White Plains, New York 10601  
admin@iqlandarch.com  
(914) 232-0200

KEY PLAN

NOTE: ALL IDEAS, DESIGNS, ARRANGEMENTS AND PLANS INDICATED OR REPRESENTED BY THIS DRAWING ARE OWNED BY AND ARE THE PROPERTY OF KATIE GARNETT & DAVIDSON ARCHITECTS, P.C. (KG&D), AND WERE CREATED FOR USE ON THIS PROJECT. NONE OF SUCH IDEAS, DESIGNS, ARRANGEMENTS OR PLANS SHALL BE USED BY OR DISCLOSED TO ANY PURPOSE WHATSOEVER WITHOUT THE WRITTEN PERMISSION OF (KG&D).

WRITTEN DIMENSIONS ON THIS DRAWING SHALL HAVE PRECEDENCE OVER SCALED DIMENSIONS. CONTRACTOR SHALL VERIFY ALL ACTUAL DIMENSIONS AND CONDITIONS ON THE JOB AND THE ARCHITECT MUST BE NOTIFIED OF ANY VARIATIONS FROM DIMENSIONS AND CONDITIONS SHOWN. SHOP DETAILS MUST BE SUBMITTED TO THIS OFFICE FOR APPROVAL BEFORE PROCEEDING WITH FABRICATION.

ALTERATIONS BY ANY PERSON, IN ANY WAY, OF ANY ITEM CONTAINED ON THIS DOCUMENT, UNLESS ACTING UNDER THE DIRECTION OF THE LICENSED ARCHITECT WHOSE PROFESSIONAL SEAL IS AFFIXED HERETO, IS A VIOLATION OF TITLE V&L, SECT. 60 (b) OF NEW YORK STATE LAW. COPYRIGHT MATTER, GARNETT & DAVIDSON ARCHITECTS & ENGINEERS, P.C. ALL RIGHTS RESERVED.

Professional Seal



No.	Date	Issue
8	8/12/2021	ISSUED FOR CONSTRUCTION
7	6/25/2021	ISSUED FOR PERMIT
6	2/24/2021	BID ISSUE
5	5/8/2020	90% CONSTRUCTION DOCUMENTS
4	2/25/2020	REVISED FOR TB/PB APPROVAL
3	2/21/2020	DESIGN DEVELOPMENT SET
2	1/02/2020	SCHEMATIC DESIGN SET
1	11/26/2019	SITE PLAN SUBMISSION

Sheet Title

**SITE DETAILS**

Job No.	2018-1022	Date	08/28/2019
Scale	AS SHOWN	Drawn / Checked	OVI/JAI
Sheet Number			

**L301**



STREAM  
CENTER FOR  
EXPERIENTIAL LEARNING  
SCHOOL OF THE HOLY  
CHILD  
2225 WESTCHESTER AVE,  
RYE, NY

**KG+D** listen  
imagine  
build  
KG+D . ARCHITECTS PC  
285 MAIN STREET MOUNT KISCO . NEW YORK . 10549  
P:914.666.5900 KGDARCHITECTS.COM

SITE PLAN SUBMISSION

**IQ**  
Imbiano .Quigley  
Landscape Architects, P.C.  
31 Mamaroneck Ave., 7th FL.  
White Plains, New York 10601  
admin@iqlandarch.com  
(914) 232-0200

KEY PLAN

NOTE: ALL IDEAS, DESIGNS, ARRANGEMENTS AND PLANS INDICATED OR REPRESENTED BY THIS DRAWING ARE OWNED BY AND ARE THE PROPERTY OF MASTER, GARNETT & DAVIDSON ARCHITECTS, P.C. (MG&D), AND WERE CREATED FOR USE ON THIS PROJECT. NONE OF SUCH IDEAS, DESIGNS, ARRANGEMENTS OR PLANS SHALL BE USED BY OR DISCLOSED TO ANY PURPOSE WHATSOEVER WITHOUT THE WRITTEN PERMISSION OF (MG&D).

WRITTEN DIMENSIONS ON THIS DRAWING SHALL HAVE PRECEDENCE OVER SCALED DIMENSIONS. CONTRACTOR SHALL VERIFY ALL ACTUAL DIMENSIONS AND CONDITIONS ON THE JOB AND THE ARCHITECT MUST BE NOTIFIED OF ANY VARIATIONS FROM DIMENSIONS AND CONDITIONS SHOWN. SHOP DETAILS MUST BE SUBMITTED TO THIS OFFICE FOR APPROVAL BEFORE PROCEEDING WITH FABRICATION.

ALTERATIONS BY ANY PERSON, IN ANY WAY, OF ANY ITEM CONTAINED ON THIS DOCUMENT, UNLESS ACTING UNDER THE DIRECTION OF THE LICENSED ARCHITECT WHOSE PROFESSIONAL SEAL IS AFFIXED HERETO, IS A VIOLATION OF TITLE V.B. SECT. 60.1 (b) OF NEW YORK STATE LAW.  
COPYRIGHT MASTER, GARNETT & DAVIDSON ARCHITECTS & ENGINEERS, P.C. ALL RIGHTS RESERVED.

Professional Seal



8	8/12/2021	ISSUED FOR CONSTRUCTION
7	6/25/2021	ISSUED FOR PERMIT
6	2/24/2021	BID ISSUE
5	5/8/2020	90% CONSTRUCTION DOCUMENTS
4	2/25/2020	REVISED FOR TB/PB APPROVAL
3	2/21/2020	DESIGN DEVELOPMENT SET
2	1/02/2020	SCHEMATIC DESIGN SET
1	11/26/2019	SITE PLAN SUBMISSION

No. Date Issue

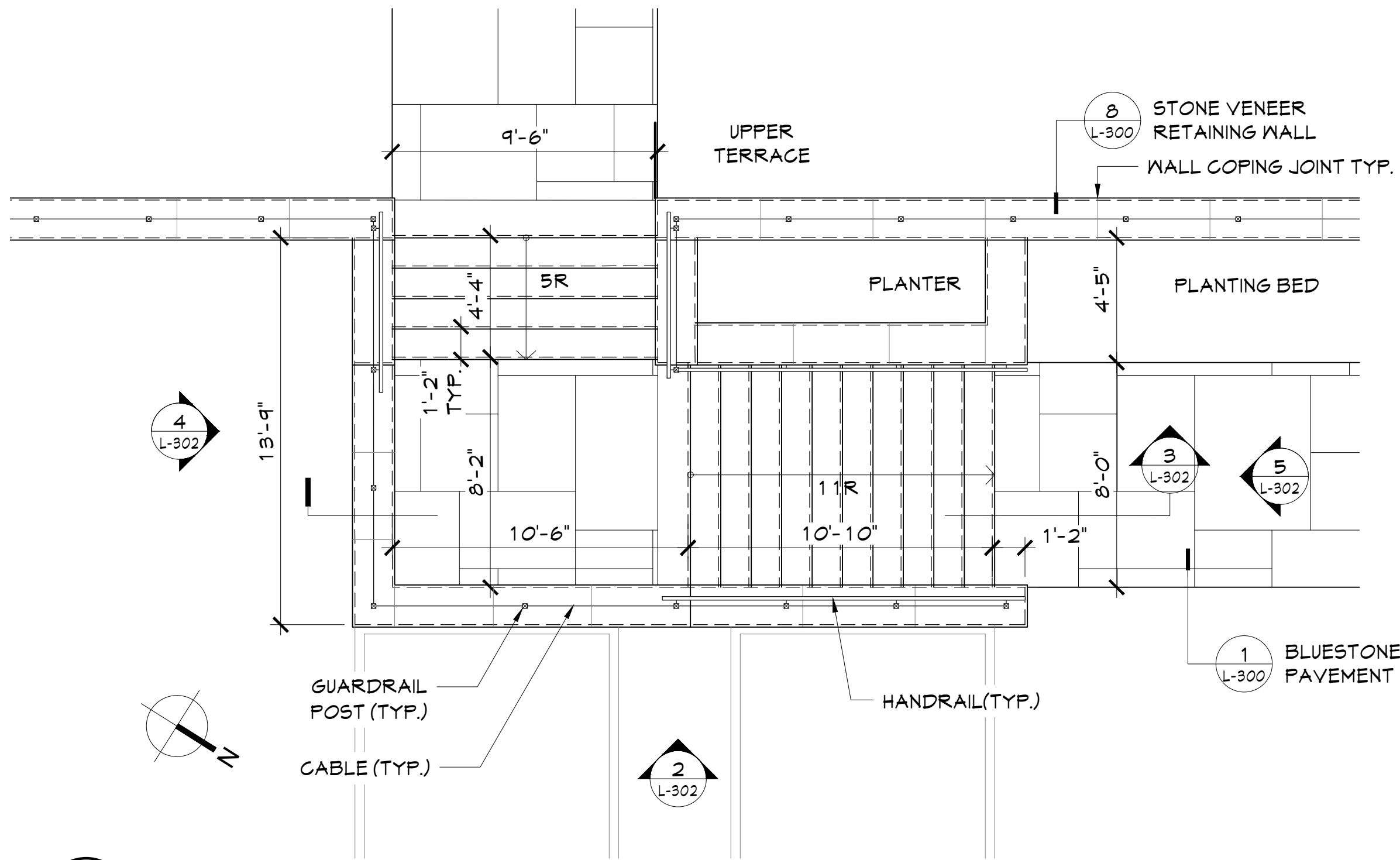
Sheet Title

'E' WALL  
SITE DETAILS

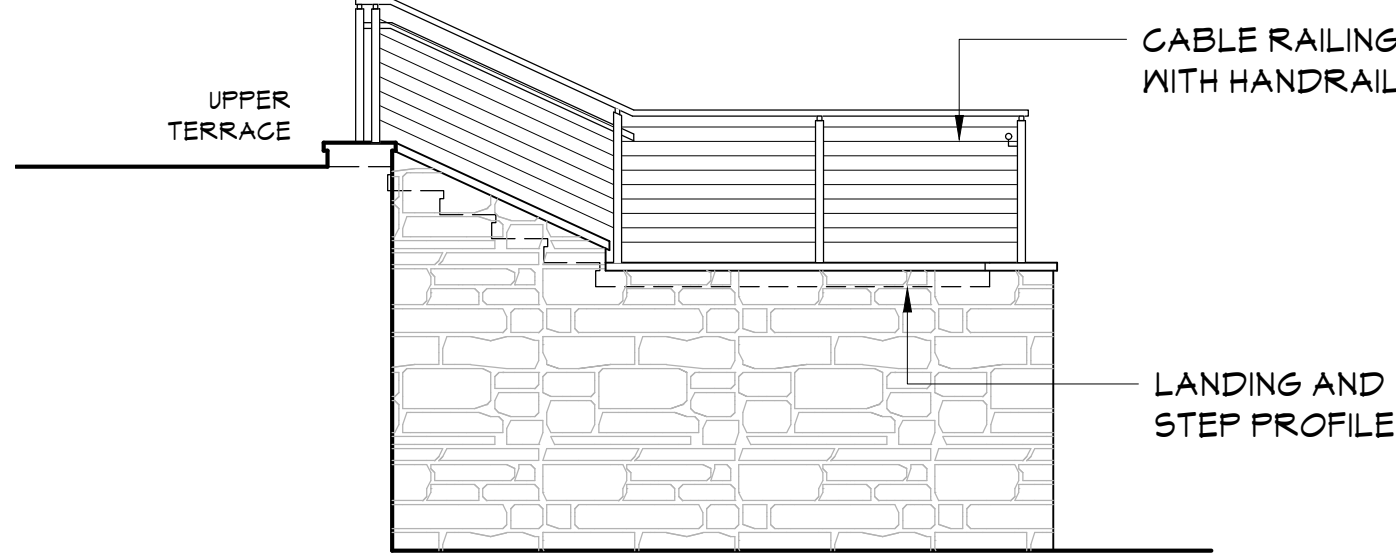
Job No.	2018-1022	Date	08/28/2019
Scale	AS SHOWN	Drawn / Checked	OVI/JAI

Sheet Number

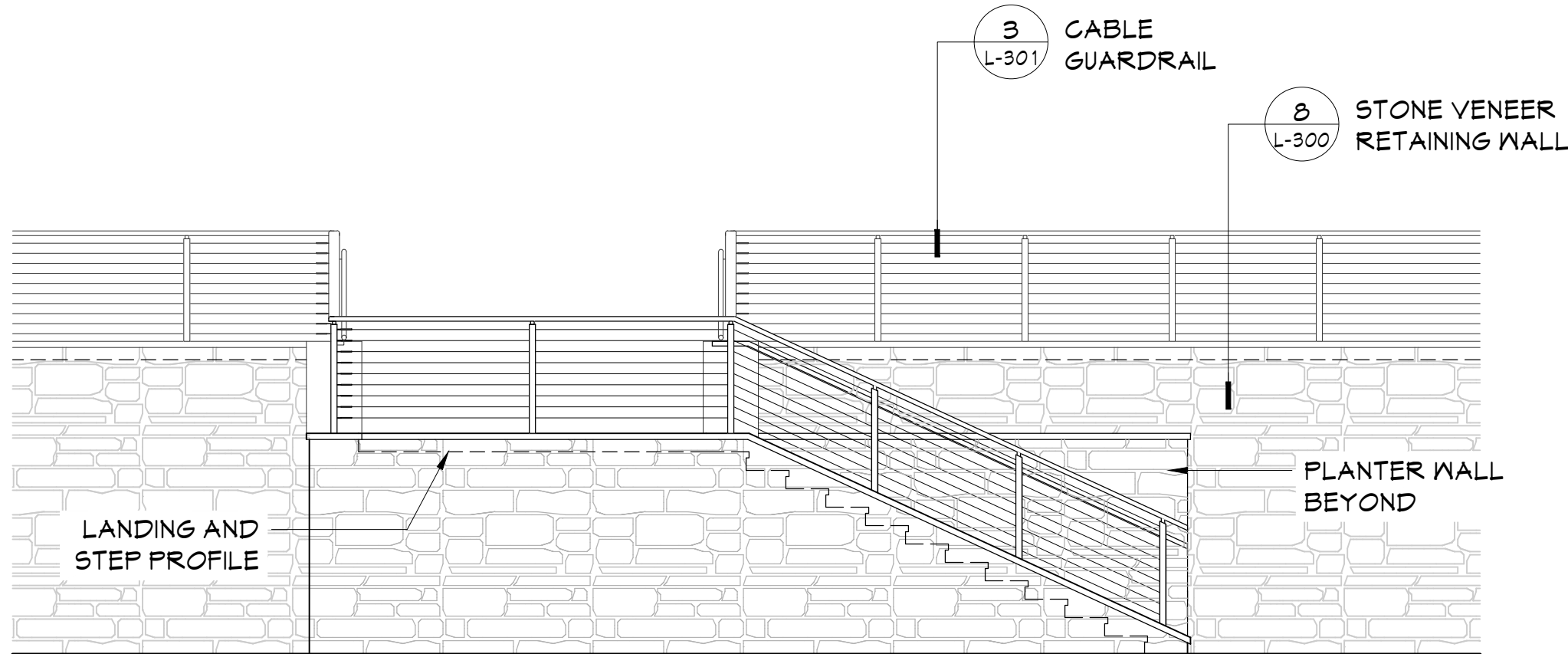
L302



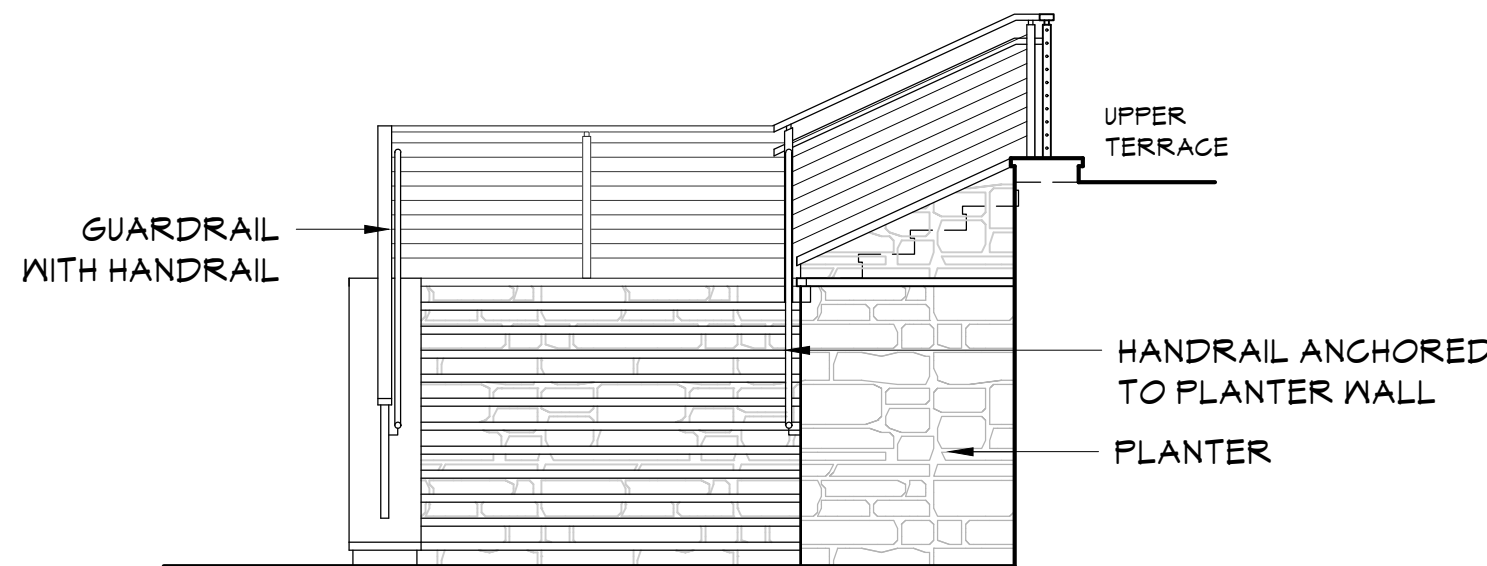
1 STEPS DETAILED PLAN  
SCALE: 1/4"=1'-0"



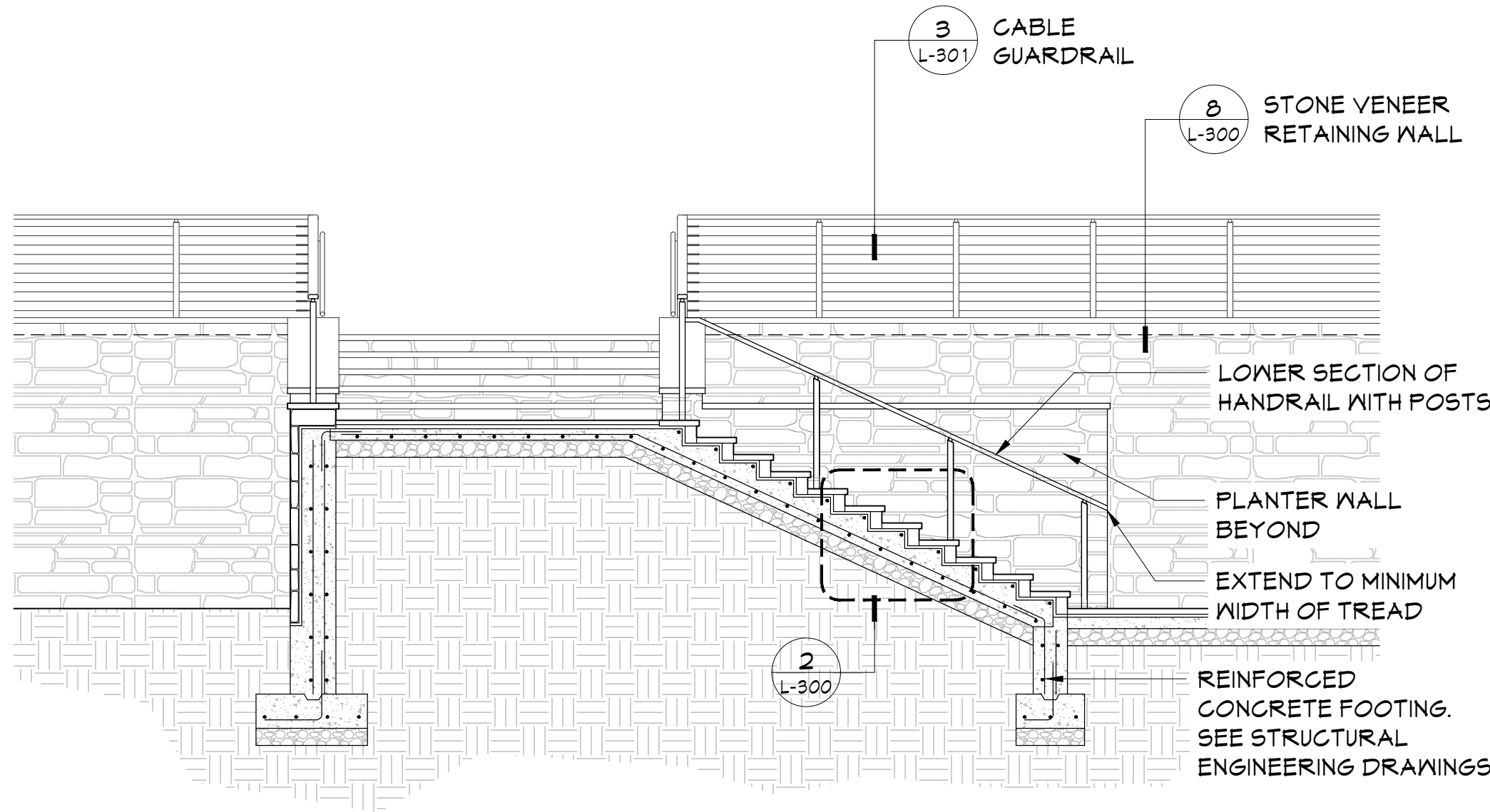
5 STEPS - SOUTH ELEVATION  
SCALE: 1/4"=1'-0"



2 STEPS - EAST ELEVATION  
SCALE: 1/4"=1'-0"

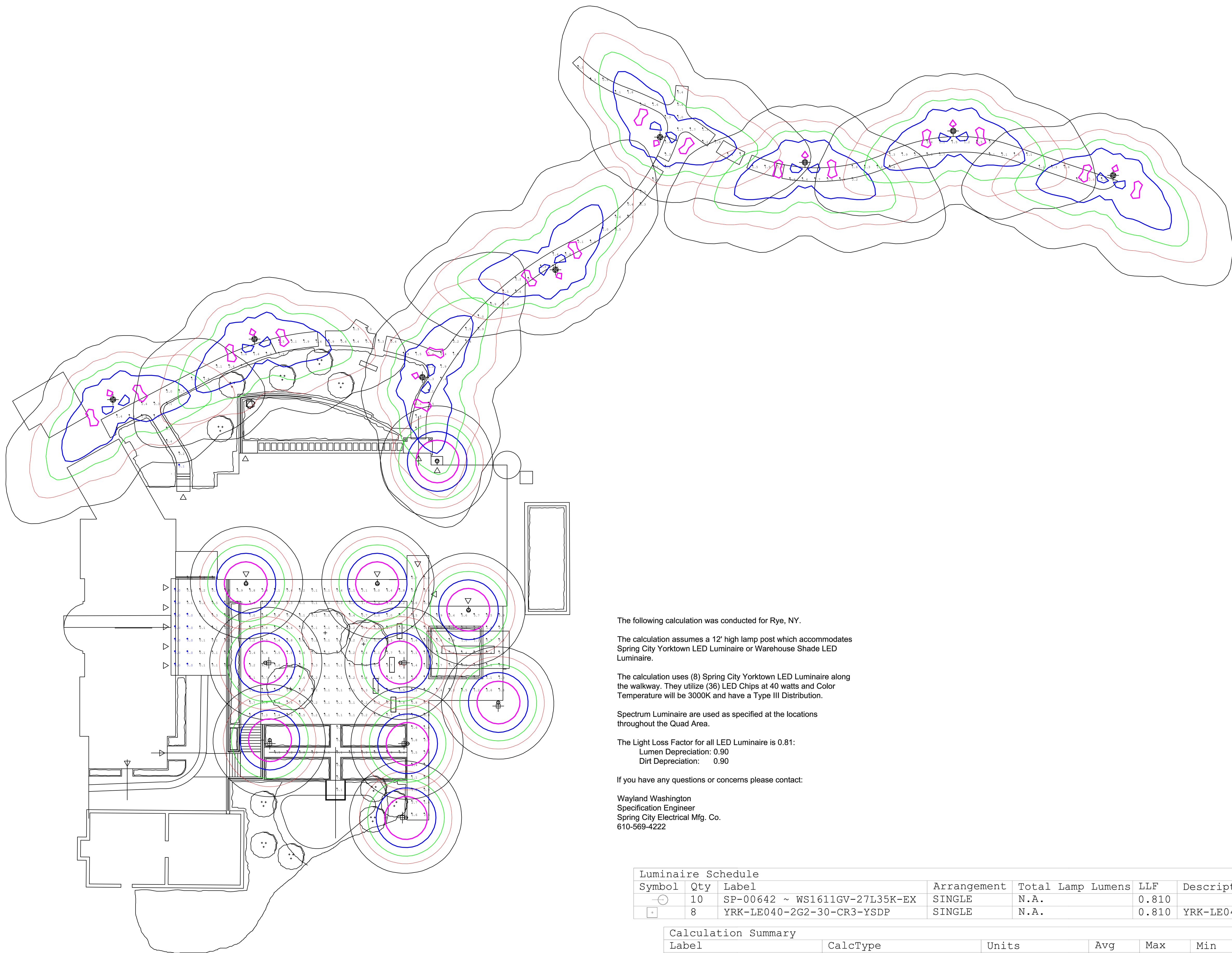


5 STEPS - NORTH ELEVATION  
SCALE: 1/4"=1'-0"



5 STEPS SECTION  
SCALE: 1/4"=1'-0"





The following calculation was conducted for Rye, NY.

The calculation assumes a 12' high lamp post which accommodates Spring City Yorktown LED Luminaire or Warehouse Shade LED Luminaire.

The calculation uses (8) Spring City Yorktown LED Luminaire along the walkway. They utilize (36) LED Chips at 40 watts and Color Temperature will be 3000K and have a Type III Distribution.

Spectrum Luminaire are used as specified at the locations throughout the Quad Area.

The Light Loss Factor for all LED Luminaire is 0.81:  
Lumen Depreciation: 0.90  
Dirt Depreciation: 0.90

If you have any questions or concerns please contact:

Wayland Washington  
Specification Engineer  
Spring City Electrical Mfg. Co.  
610-569-4222

Luminaire Schedule						
Symbol	Qty	Label	Arrangement	Total Lamp Lumens	LLF	Description
⊖	10	SP-00642 ~ WS1611GV-27L35K-EX	SINGLE	N.A.	0.810	
+	8	YRK-LE040-2G2-30-CR3-YSDP	SINGLE	N.A.	0.810	YRK-LE040-2G2-30-CR3-YSDP

Calculation Summary								
Label	CalcType	Units	Avg	Max	Min	Avg/Min	Max/Min	
Quad Area	Illuminance	Fc	1.10	6.9	0.0	N.A.	N.A.	
Walk Wsy	Illuminance	Fc	1.45	2.6	0.1	14.50	26.00	



Spring City Electrical Mfg. Co.  
1 South Main Street Spring City, PA 19475

Prepared By: W. Washington  
Software: AGI 32

Date: June 23, 2020  
Project Name: School of the Holy Child

**STREAM**  
CENTER FOR  
EXPERIENTIAL LEARNING  
SCHOOL OF THE HOLY  
CHILD  
2225 WESTCHESTER AVE,  
RYE, NY

**KG+D** listen  
imagine  
build  
KG+D . ARCHITECTS PC  
285 MAIN STREET MOUNT KISCO . NEW YORK . 10549  
P:914.666.5900 KGDARCHITECTS.COM

**SITE PLAN SUBMISSION**

**IQ**  
Imbiano .Quigley  
Landscape Architects, P.C.  
31 Mamaroneck Ave., 7th FL.  
White Plains, New York 10601  
admin@iqlandarch.com  
(914) 232-0200

#### KEY PLAN

NOTE: ALL IDEAS, DESIGNS, ARRANGEMENTS AND PLANS INDICATED OR REPRESENTED BY THIS DRAWING ARE OWNED BY AND ARE THE PROPERTY OF MAETER, GARMENT & DAVIDSON ARCHITECTS, P.C. (KG&D), AND WERE CREATED FOR USE ON THIS PROJECT. NONE OF SUCH IDEAS, DESIGNS, ARRANGEMENTS OR PLANS SHALL BE USED BY OR DISCLOSED TO ANY PURPOSE WHATSOEVER WITHOUT THE WRITTEN PERMISSION OF (KG&D).

WRITTEN DIMENSIONS ON THIS DRAWING SHALL HAVE PRECEDENCE OVER SCALED DIMENSIONS. CONTRACTOR SHALL VERIFY ALL ACTUAL DIMENSIONS AND CONDITIONS ON THE JOB AND THE ARCHITECT MUST BE NOTIFIED OF ANY VARIATIONS FROM DIMENSIONS AND CONDITIONS SHOWN. SHOP DETAILS MUST BE SUBMITTED TO THIS OFFICE FOR APPROVAL BEFORE PROCEEDING WITH FABRICATION.

ALTERATIONS BY ANY PERSON, IN ANY WAY, OF ANY ITEM CONTAINED ON THIS DOCUMENT, UNLESS ACTING UNDER THE DIRECTION OF THE LICENSED ARCHITECT WHOSE PROFESSIONAL SEAL IS AFFIXED HERETO, IS A VIOLATION OF TITLE V.B. SECT. 80.1 (b) OF NEW YORK STATE LAW. COPYRIGHT MAETER, GARMENT & DAVIDSON ARCHITECTS & ENGINEERS, PC. ALL RIGHTS RESERVED.

Professional Seal



8	8/12/2021	ISSUED FOR CONSTRUCTION
7	6/25/2021	ISSUED FOR PERMIT
6	2/24/2021	BID ISSUE
5	5/8/2020	90% CONSTRUCTION DOCUMENTS
4	2/25/2020	REVISED FOR TB/PB APPROVAL
3	2/21/2020	DESIGN DEVELOPMENT SET
2	1/02/2020	SCHEMATIC DESIGN SET
1	11/26/2019	SITE PLAN SUBMISSION
No.	Date	Issue

#### PHOTOMETRIC STUDY

Job No.	Date
2018-1022	08/28/2019
Scale	Drawn / Checked
AS SHOWN	OV/JAI

Sheet Number

**L400**