

STREAM Center for Experiential Learning

SCHOOL OF THE HOLY CHILD

2225 WESTCHESTER AVE, RYE, NY

ISSUED FOR BID 8/12/2021

STREAM Center for Experiential Learning

KG&D Project No.
2018-1078

DESIGN TEAM

ARCHITECT
KG&D ARCHITECTS

285 Main Street
Mt Kisco, NY 10549
phone: 914-666-5900

MECHANICAL ENGINEER
OLA Consulting Engineers, PC

50 Broadway,
Hawthorne, NY 10532
phone: (914) 747-0453

STRUCTURAL ENGINEER
The Di Salvo Engineering Group

83 Wooster Heights Road, Suite 200
Danbury, CT 06810
phone: 203-430-4140

CIVIL ENGINEER
JMC PLANNING ENGINEERING
LANDSCAPE ARCHITECTURE & LAND SURVEY, PLLC

120 Bedford Road
Armonk, NY 10504
phone: 914 273-5225

LANDSCAPE CONSULTANT
IQ Landscape Architects

31 Mamaroneck Ave. 7th Flr
White Plains, NY 10601
phone: 914.232.0200

CONSTRUCTION DOCUMENTS



LIST OF DRAWINGS

00 GENERAL

CC-1	CODE COMPLIANCE INFORMATION
CC-2	CODE COMPLIANCE DRAWINGS
G001	GENERAL INFORMATION

01 CIVIL

C000	ZONING COMPLIANCE SHEET
C010	OVERALL EXISTING CONDITIONS MAP
C020	EXISTING CONDITIONS MAP
C040	SITE REMOVALS PLAN
C100	OVERALL SITE PLAN
C101	SITE LAYOUT PLAN
C200	GRADING PLAN
C210	SLOPE DISTURBANCE PLAN
C300	UTILITIES PLAN
C400	EROSION AND SEDIMENT CONTROL PLAN
C601	FIRE SAFETY PLAN
C603	FIRE VEHICLE ACCESS PLAN
C700	WATER QUALITY IMPROVEMENT PLAN
C800	CIVIL AND LANDSCAPE ALTERNATIVES PLAN
C900	CONSTRUCTION DETAILS
C901	CONSTRUCTION DETAILS
C902	CONSTRUCTION DETAILS
C903	CONSTRUCTION DETAILS
C904	CONSTRUCTION DETAILS
C905	CONSTRUCTION DETAILS
C906	CONSTRUCTION DETAILS
C907	CONSTRUCTION DETAILS

02 LANDSCAPE

L100	SITE GRADING & MATERIALS PLAN
L101	COURTYARD GRADING & MATERIALS PLAN
L200	PLANTING & TREE REMOVALS PLAN
L300	SITE DETAILS
L301	SITE DETAILS

L302	'E' WALL SITE DETAILS
L400	PHOTOMETRIC STUDY

03 STRUCTURAL

S001	GENERAL NOTES AND MATERIAL SPECIFICATIONS
S002	GENERAL NOTES AND MATERIAL SPECIFICATIONS
S101	FIRST FLOOR SLAB-ON-GRADE AND FDN PLAN
S102	SECOND FLOOR FRAMING PLAN
S103	ROOF FRAMING PLAN
S201	FOUNDATION SCHEDULES AND TYPICAL DETAILS
S202	FOUNDATION SCHEDULES AND TYPICAL DETAILS
S210	FOUNDATION SECTIONS
S211	FOUNDATION SECTIONS
S301	FRAMING DETAILS & SECTIONS
S310	TRUSS ELEVATIONS
S401	MASONRY SCHEDULE AND TYPICAL DETAILS
S402	TYPICAL MASONRY DETAILS
S501	COLD FORMED FRAMING SCHEDULES AND TYPICAL DETAILS

03.5 HAZARDOUS MATERIAL

ASB-100	BASEMENT BUILDING 1930
ASB-101	1ST FLOOR BUILDING 1930
ASB-102	ATTIC BUILDING 1930
ASB-103	CRAWL SPACE BUILDING 1930
ASB-104	ROOF BUILDING 1930
ASB-105	1ST FLOOR BUILDING 1950
ASB-106	2ND FLOOR BUILDING 1950
ASB-107	ROOF BUILDING 1950
ASB-108	1ST FLOOR BUILDING 1970
ASB-109	2ND FLOOR BUILDING 1970
ASB-110	ROOF BUILDING 1970

04 ARCHITECTURE

A101	FIRST FLOOR DEMO PLAN
A102	SECOND FLOOR DEMO PLAN

A201	FIRST FLOOR PLAN
A202	SECOND FLOOR PLAN
A211	POWER & DATA PLANS
A250	ROOF PLAN
A301	EXTERIOR ELEVATIONS & SECTION
A302	EXTERIOR ELEVATION & SECTIONS
A401	ENLARGED PLAN & INTERIOR ELEV - ART STUDIO
A402	ENLARGED PLAN & INTERIOR ELEV - SCIENCE LAB
A403	ENLARGED PLAN & INTERIOR ELEV - SCIENCE LAB
A404	ENLARGED PLAN & INTERIOR ELEV - ENGINEERING LAB
A430	TOILET ROOM PLANS & ELEVATIONS
A440	TYPICAL CASEWORK/ MILLWORK DETAILS
A441	TYPICAL CASEWORK/ MILLWORK DETAILS
A501	CASEWORK, MILLWORK, & FINISH SCHEDULE
A502	FINISH FLOOR PLANS
A530	SIGNAGE SCHEDULE
A601	REFLECTED CEILING PLANS
A602	CEILING DETAILS
A701	ELEVATOR, STAIR PLANS & SECTIONS
A702	TYPICAL STAIR DETAILS
A801	WALL SECTIONS
A802	WALL SECTIONS
A803	WALL SECTIONS
A804	WALL SECTIONS
A805	BUILDING DETAILS
A806	BUILDING DETAILS
A807	SITE WALL SECTIONS
A811	EXTERIOR FINISH DETAILS
A812	EXTERIOR FINISH DETAILS
A831	PLAN DETAILS
A901	PARTITION TYPES
A902	DOOR SCHEDULE AND TYPICAL DOOR DETAILS

A903	WINDOW TYPES
05 FIRE PROTECTION	
FP001	FIRE PROTECTION SYMBOLS, ABBREVIATIONS & NOTES
FP201	FIRE PROTECTION 1ST FLOOR PLAN
FP202A	FIRE PROTECTION 2ND FLOOR & ATTIC PLANS BASE BID
FP202B	FIRE PROTECTION 2ND FLOOR & ATTIC PLANS ADD/ALT
FP701	FIRE PROTECTION DETAILS 1 OF 2
FP702	FIRE PROTECTION DETAILS 2 OF 2
FR001	FIRE RADIO SYMBOLS, ABBREVIATIONS & GENERAL NOTES
FR301	FIRE RADIO FIRST FLOOR PLAN
FR302	FIRE RADIO SECOND FLOOR PLAN
FR501	FIRE RADIO COMMUNICATIONS (ERRCS) ONE-LINE DIAGRAM

06 PLUMBING

P001	PLUMBING SYMBOLS, ABBREVIATIONS & NOTES
P101	PLUMBING DEMOLITION PLAN
P201	PLUMBING 1ST FLOOR NEW WORK PLAN
P202A	PLUMBING 2ND FLOOR NEW WORK PLAN BASE BID
P202B	PLUMBING 2ND FLOOR NEW WORK PLAN ADD/ALT
P501	PLUMBING RISER DIAGRAM
P701	PLUMBING DETAILS 1 OF 2
P702	PLUMBING DETAILS 2 OF 2

07 MECHANICAL

M001	MECHANICAL SYMBOLS, ABBREVIATIONS & NOTES
M201	MECHANICAL 1ST FLOOR NEW WORK PLAN
M202A	MECHANICAL 2ND FLOOR NEW WORK PLAN BASE BID
M202B	MECHANICAL 2ND FLOOR NEW WORK PLAN ADD/ALT
M203	MECHANICAL ATTIC NEW WORK PLAN
M401	MECHANICAL SITE PLAN
M601	MECHANICAL EQUIPMENT NOTES & SCHEDULES
M602	MECHANICAL SCHEDULES
M701	MECHANICAL DETAILS
M702	MECHANICAL DETAILS

M703	MECHANICAL DETAILS
08 ELECTRICAL	
E001	ELECTRICAL SYMBOLS, ABBREVIATIONS & GENERAL NOTES
E100	ELECTRICAL SITE POWER PLAN
E101	ELECTRICAL FIRST FLOOR DEMOLITION PLAN
E102	ELECTRICAL SECOND FLOOR DEMOLITION PLAN
E103	ELECTRICAL SITE CONDUIT ROUTING PLAN
E200	ELECTRICAL SITE LIGHTING PLAN
E201	ELECTRICAL FIRST FLOOR LIGHTING PLAN
E202	ELECTRICAL SECOND FLOOR LIGHTING PLAN
E301	ELECTRICAL FIRST FLOOR NEW WORK PLAN
E302	ELECTRICAL SECOND FLOOR NEW WORK PLAN
E303	ELECTRICAL ATTIC NEW WORK PLAN
E401	FIRE ALARM FIRST FLOOR NEW WORK PLAN
E402	FIRE ALARM SECOND FLOOR NEW WORK PLAN
E501	ELECTRICAL ONE-LINE DIAGRAM - DEMO WORK
E502	ELECTRICAL ONE-LINE DIAGRAM - NEW WORK
E503	FIRE ALARM RISER DIAGRAM - DEMO WORK
E504	FIRE ALARM RISER DIAGRAM - NEW WORK
E601	ELECTRICAL SCHEDULES
E602	ELECTRICAL SCHEDULES
E603	ELECTRICAL SCHEDULES
E701	ELECTRICAL DETAILS
E702	ELECTRICAL DETAILS
E703	ELECTRICAL DETAILS

ADD/ALTERNATE LIST:

ADD/ALT #1

- SECOND FLOOR BUILD-OUT
 - ALL CASEWORK, COUNTERTOPS APPLIANCES
 - DOORS, JAMBS, INTERIOR OPENINGS U.N.O.
 - ALL FINISH WORK ON A403 & A404
 - TOILET ROOMS 14/A430 & A15-22 A430
 - FINISH SCHEDULE - A501 SECOND FLOOR
 - FINISH FLOOR PLANS - 3/A502 & 4/A502
 - REFLECTED CEILING PLANS 2/A601
 - DOOR SCHEDULE - A902 SECOND FLOOR

ADD/ALT #2

- ELEVATOR SYSTEM & EQUIPMENT SEE DETAILS 3/A701 & 4/A701

ADD/ALT #3

- First Floor millwork and cabinetry scope to be clarified via Addendum

FURTHER ALTERNATES AS INDICATED IN RFP ATTACHMENT #3

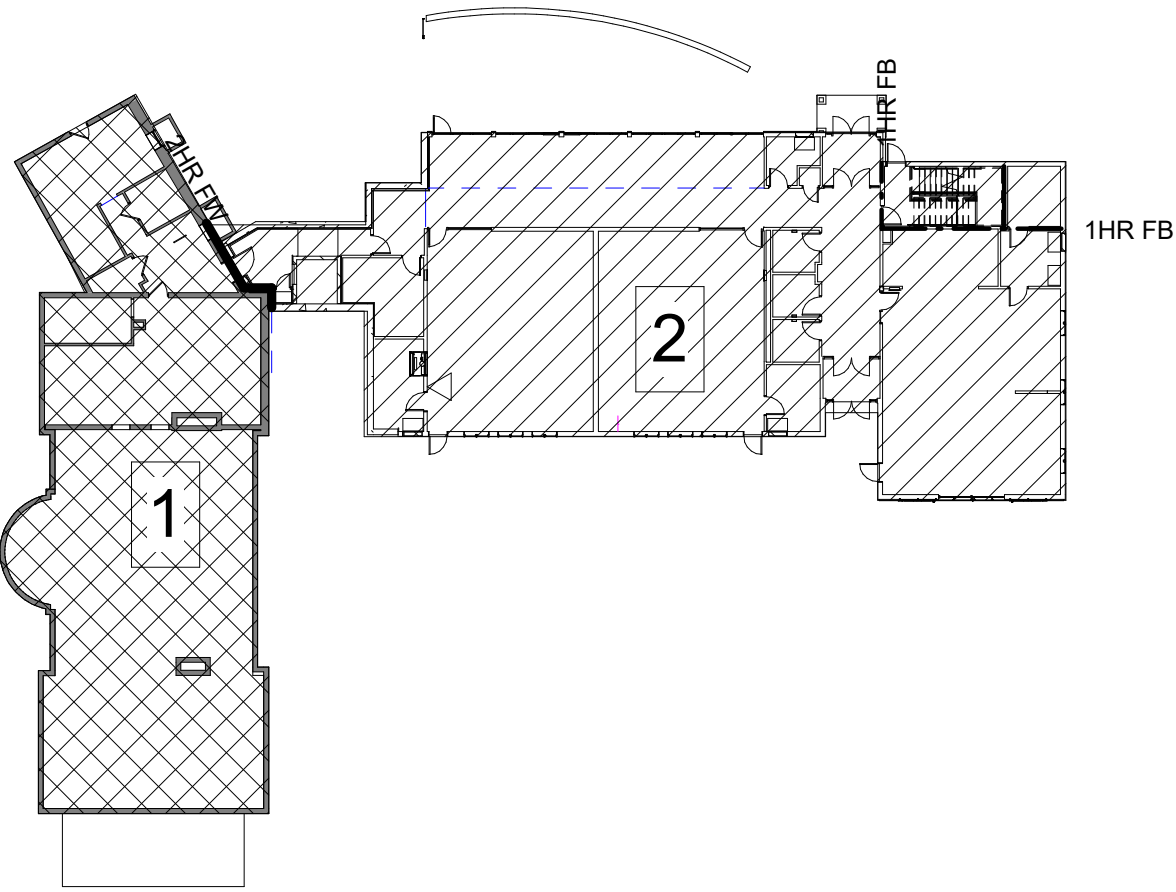
1- BUILDING AREA CALCULATIONS

(As defined by IBC 2015
Does not include elevator shaft space, but includes canopies and includes overhangs if overhangs exceed 2 ft)

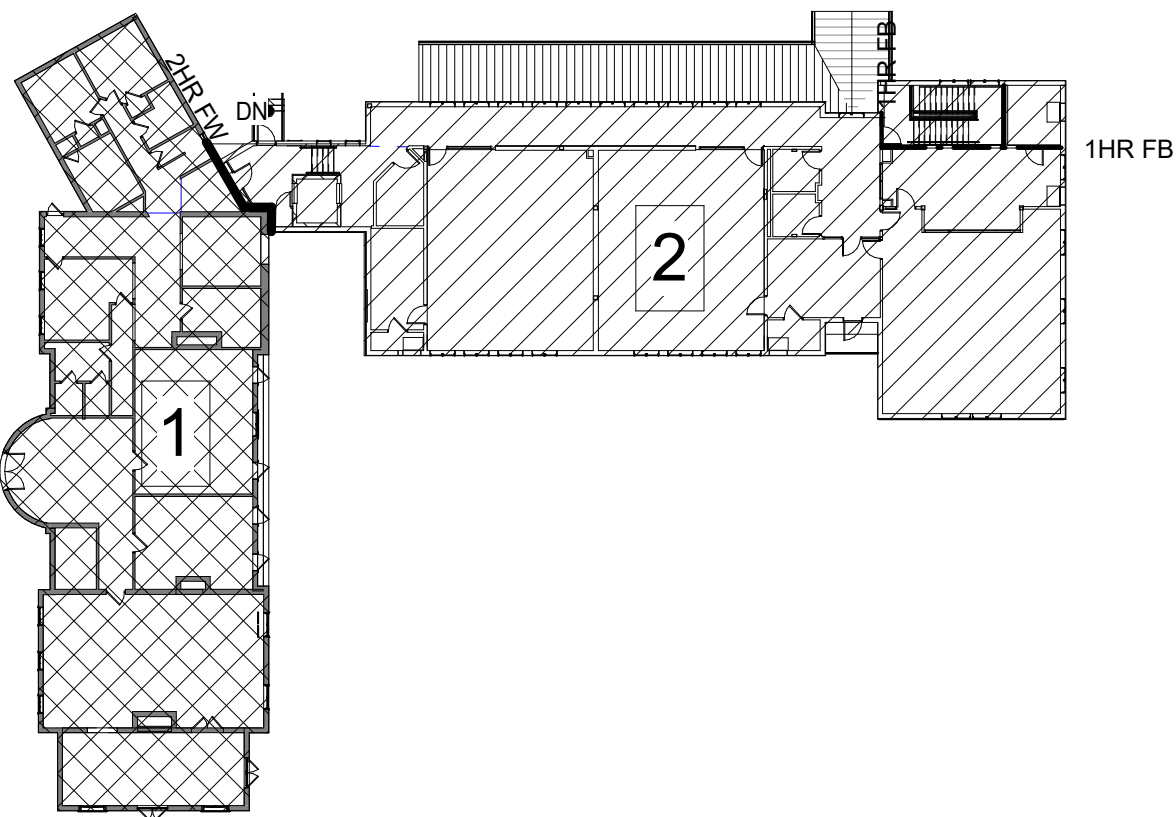
BLDG		CONST TYPE	STORIES		EXISTING	DEMO	NEW	TOTAL
A	1920s Convent Building	VB Wood framed, not sprinklered	2+Basement	BASEMENT	4,048 SF			4,048 SF
				1st FLOOR	4,464 SF			4,464 SF
				2nd FLOOR	4,464 SF			4,464 SF
				Attic	2,070 SF			2,070 SF
				SUBTOTAL	15,046 SF			15,046 SF
B	1950s and 1970s Convent Additions	VB Existing: Wood framed	2+Basement	BASEMENT	7,706 SF	(-) 7,706 SF		0 SF
				1st FLOOR	6,998 SF	(-) 6,998 SF		0 SF
				2nd FLOOR	6,904 SF	(-) 6,904 SF		0 SF
				SUBTOTAL	21,608 SF	(-) 21,608 SF		0 SF
C	New STREAM Center - Classroom Building	VB Wood and Steel frame, sprinklered	2	1st FLOOR			6,601 SF	6,601 SF
				2nd FLOOR			5,754 SF	5,754 SF
				SUBTOTAL			12,355 SF	12,355 SF
				TOTAL	36,654 SF	(-) 21,608 SF	12,355 SF	27,401 SF

2- FIRE AREA CALCULATIONS

FIRE AREA		CONST TYPE	STORIES	EXISTING CONSTRUCTION	PROPOSED CONSTRUCTION	PROPOSED FIRE AREA	REMARKS
1	1920s Convent	VB	3	15,046 SF		15,046 SF	EXISTING NONCONFORMING, NON SPRINKLERED NOT IN USE
2	2020 Classroom Building	VB	2		12,550 SF	12,550 SF	NEW FIRE AREA CONFORMING SPRINKLERED



1 FIRST FLOOR AREA PLAN
1/32" = 1'-0"



2 SECOND FLOOR AREA PLAN
1/32" = 1'-0"

3 - USE, CLASSIFICATION, & BUILDING HEIGHTS AND AREAS

EXISTING BUILDING

USE & OCCUPANCY CLASSIFICATION: R-2 (currently not in use)

CONSTRUCTION TYPE: 5B, not sprinklered

BUILDING HEIGHT & AREA: PERMITTED ACTUAL

HEIGHT 60'
STORIES 2
FLOOR AREA 45,885 SF
STORY AREA,1ST 15,295 SF

30'+/-
3+basement*
15,046 SF
4,464 SF

*PRE-EXISTING NON-CONFORMING

Single Occupancy Multistory building (506.2.3)
Aa=[At+(NSxlf)]xSa
At=NS= 9500
Ns= 9500
lf= [F/P-0.25]W/30 [281'/325'-.25]30/30=0.61
Sa=3 stories
W=30
Aa=[9500+(9500x.61)]x3= 45,885 SF

No Single story shall exceed Aa where value Sa=1
Aa=[9500+(9500x.61)]x1=15,295

NEW ADDITION

USE & OCCUPANCY CLASSIFICATION: E

CONSTRUCTION TYPE: VB, sprinklered

BUILDING HEIGHT & AREA: PERMITTED ACTUAL

HEIGHT 60'
STORIES 2
FLOOR AREA 69,350 SF
STORY AREA,1ST 34,675 SF

29' +/-
2
12,550 SF
6,601 SF

Single Occupancy Multistory building (506.2.3)
Aa=[At+(NSxlf)]xSa
At=Sm= 28500
Ns= 9500
lf= [F/P-0.25]W/30 [332'/367'-.25]30/30=0.65
Sa=2 stories
W=30
Aa=[28500+(9500x.65)]x2= 69,350 SF

No Single story shall exceed Aa where value Sa=1
Aa=[28500+(9500x.65)]x1= 34,675 SF

4 - FIRE-RESISTANCE-RATED CONSTRUCTION

ASSEMBLY	FIRE-RESISTANCE RATING	LOCATION
FIRE WALL	2 HOURS	BETWEEN BUILDING AREAS
FIRE BARRIER	1 HOUR	ELECTRICAL ROOM, PLUS PREACTION SPRINKLER STAIRS LESS THAN 4 STORIES
	1 HOUR	SHAFT WALLS LESS THAN 4 STORIES
	1 HOUR	ELEVATOR SHAFT LESS THAN 4 STORIES
	1 HOUR	MECHANICAL ROOM
	1 HOUR	KILN ROOM
	1 HOUR	EXTERIOR WALLS & ROOF 10 FT FROM FIREWALL
	1 HOUR	CHEM PREP ROOM
*** SEE DRAWING CC.2 FOR LOCATION OF FIRE-RESISTANCE-RATED CONSTRUCTION ***		

5 - MEANS OF EGRESS

EGRESS INFORMATION:	DWG SHOWN
ROOM USE DESIGNATIONS	CC-2
ROOM SQUARE FOOTAGE	CC-2
ROOM OCCUPANCY LOADS	CC-2
EXIT TRAVEL DISTANCES	CC-2
GROUND FL:	250 FT MAX TO EXTERIOR DOOR IN SPRINKLERED BUILDING
AREA OF REFUGE	NOT REQUIRED IN SPRINKLERED BUILDING

MEANS OF EGRESS ARE PROVIDED IN ACCORDANCE WITH IBC 2018 CHAPTER 10

	PROVIDED
EXIT SIGNS	YES
MEANS OF EGRESS ILLUMINATION	YES
ACCESSIBLE MEANS OF EGRESS	YES
PANIC HARDWARE	YES

6 - ACCESSIBILITY

ACCESSIBILITY INFORMATION:	DWG SHOWN
ACCESSIBLE ROUTE	CC.2
ACCESSIBLE ENTRANCES	CC.2
PARKING FACILITIES	SITE PLAN
TOILET FACILITIES	CC.2
SIGNAGE	A530
VERTICAL ACCESS/ ELEVATOR	CC.2

7 - FIRE PROTECTIVE SYSTEMS

SEE MEP DRAWINGS FOR FIRE PROTECTION DEVICES AND LOCATIONS

THIS BUILDING IS PROVIDED WITH AN AUTOMATIC SPRINKLER SYSTEM

	PROVIDED
AUTO SPRINKLER SYSTEM	YES FOR 1ST FLOOR
STANDPIPE SYSTEMS	NO
PORTABLE FIRE EXTINGUISHERS	YES
FIRE ALARM & DETECTION SYSTEMS	YES
EMERGENCY ALARM SYSTEMS	YES
SMOKE CONTROL SYSTEMS	NO
SMOKE AND HEAT VENTS	NO
FIRE COMMAND CENTER	YES

8 - PLUMBING FIXTURE COUNT

2020 Plumbing Code of NYS
For Educational facilities:
Water Closets: 1 per 50 occupants 189/50 = 4
Lavatories: 1 per 50 occupants 189/50 = 4
Bathtubs/ Showers: Not Applicable
Water fountains: 1 per 100 = 189/100 = 2
Others: 1 service sink

9 - ENERGY CODE REQUIREMENTS

Energy Code Review 2018 IECC/ 2020 NYS
4A Climate Zone
Using R value method

Fenestration U factor
Prescriptive:
Fixed Fenestration U= .38
Operable Fenestration U= .45
Entrance Doors U=0.77

Roof
Insulation entirely above roof deck R30 ci
Attic and other: R-38

Walls above grade
Metal Framed: R-13 + R-7.5 ci

Below grade wall
R-7.5

Floors
Joist Framing R-30

Slab on Grade Floors
Unheated Slabs: R10 for 24" below

NY STATE ENERGY CODE WRITTEN STATEMENT OF COMPLIANCE

To the best of my knowledge, belief, and professional judgement, the STREAM building's plans and specifications are in compliance with the Energy Code.

STREAM Center for Experiential Learning

SCHOOL OF THE HOLY CHILD
2225 WESTCHESTER AVE,
RYE, NY

KG+D

listen
imagine
build

KG+D . ARCHITECTS PC
285 MAIN STREET MOUNT KISCO . NEW YORK . 10549
P:914.666.5900 KGDARCHITECTS.COM

CONSTRUCTION DOCUMENTS

KEY PLAN

NOTE: ALL IDEAS, DESIGNS, ARRANGEMENTS AND PLANS INDICATED OR REPRESENTED BY THIS DRAWING ARE OWNED BY AND ARE THE PROPERTY OF KAIETER, GARMENT + DAVIDSON ARCHITECTS, PC (KGAD), AND WERE CREATED FOR USE ON THIS PROJECT. NONE OF SUCH IDEAS, DESIGNS, ARRANGEMENTS OR PLANS SHALL BE USED BY OR DISCLOSED TO ANY PURPOSE WHATSOEVER WITHOUT THE WRITTEN PERMISSION OF KGAD).

WRITTEN DIMENSIONS ON THIS DRAWING SHALL HAVE PRECEDENCE OVER SCALED DIMENSIONS. CONTRACTOR SHALL VERIFY ALL ACTUAL DIMENSIONS AND CONDITIONS ON THE JOB AND THE ARCHITECT MUST BE NOTIFIED OF ANY VARIATIONS FROM DIMENSIONS AND CONDITIONS SHOWN. SHOP DETAILS MUST BE SUBMITTED TO THIS OFFICE FOR APPROVAL BEFORE PROCEEDING WITH FABRICATION.

ALTERATIONS BY ANY PERSON, IN ANY WAY, OF ANY ITEM CONTAINED ON THIS DOCUMENT, UNLESS ACTING UNDER THE DIRECTION OF THE LICENCED ARCHITECT WHOSE PROFESSIONAL SEAL IS AFFIXED HERETO, IS A VIOLATION OF TITLE V.B. SECT. (6) & (5) OF NEW YORK STATE LAW.

COPYRIGHT KAIETER, GARMENT + DAVIDSON ARCHITECTS & ENGINEERS, PC. ALL RIGHTS RESERVED.

Professional Seal

7	8/12/2021	ISSUED FOR BID
6	6/25/2021	ISSUED FOR PERMIT
3	02/21/2020	DESIGN DEVELOPMENT
No.	Date	Issue

Sheet Title

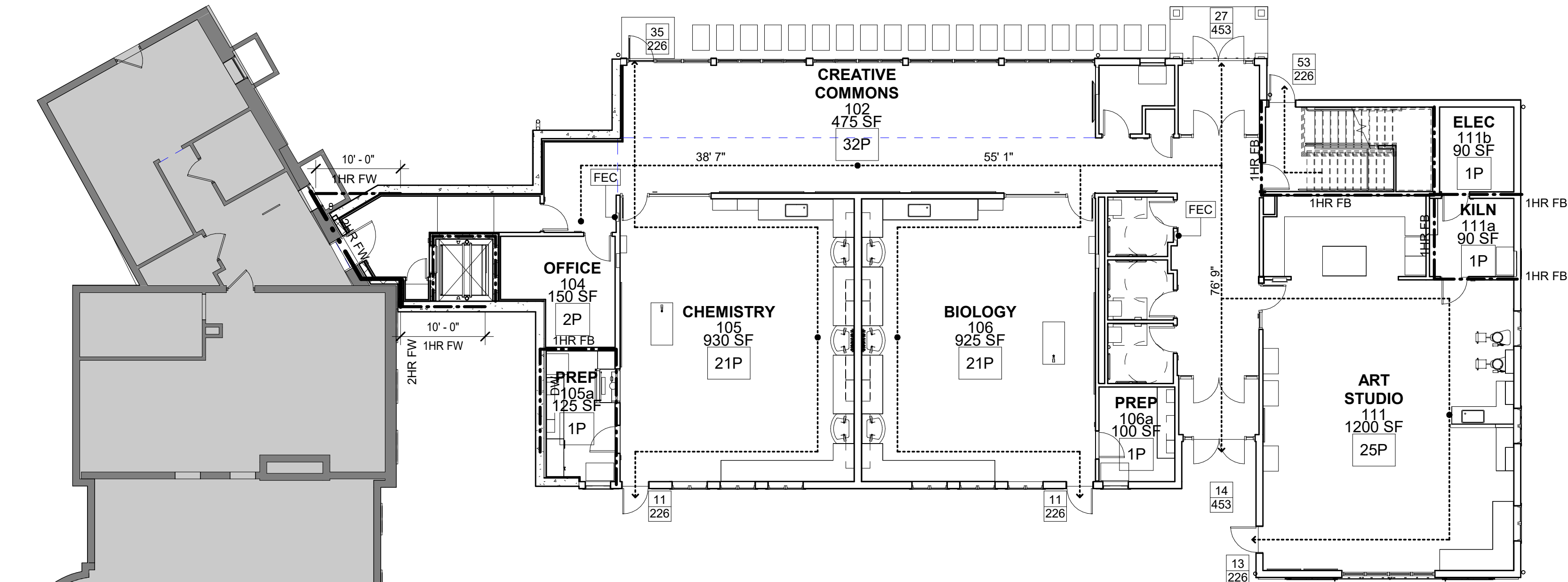
CODE COMPLIANCE INFORMATION

Job No.	Date
2018-1078	02/12/2020

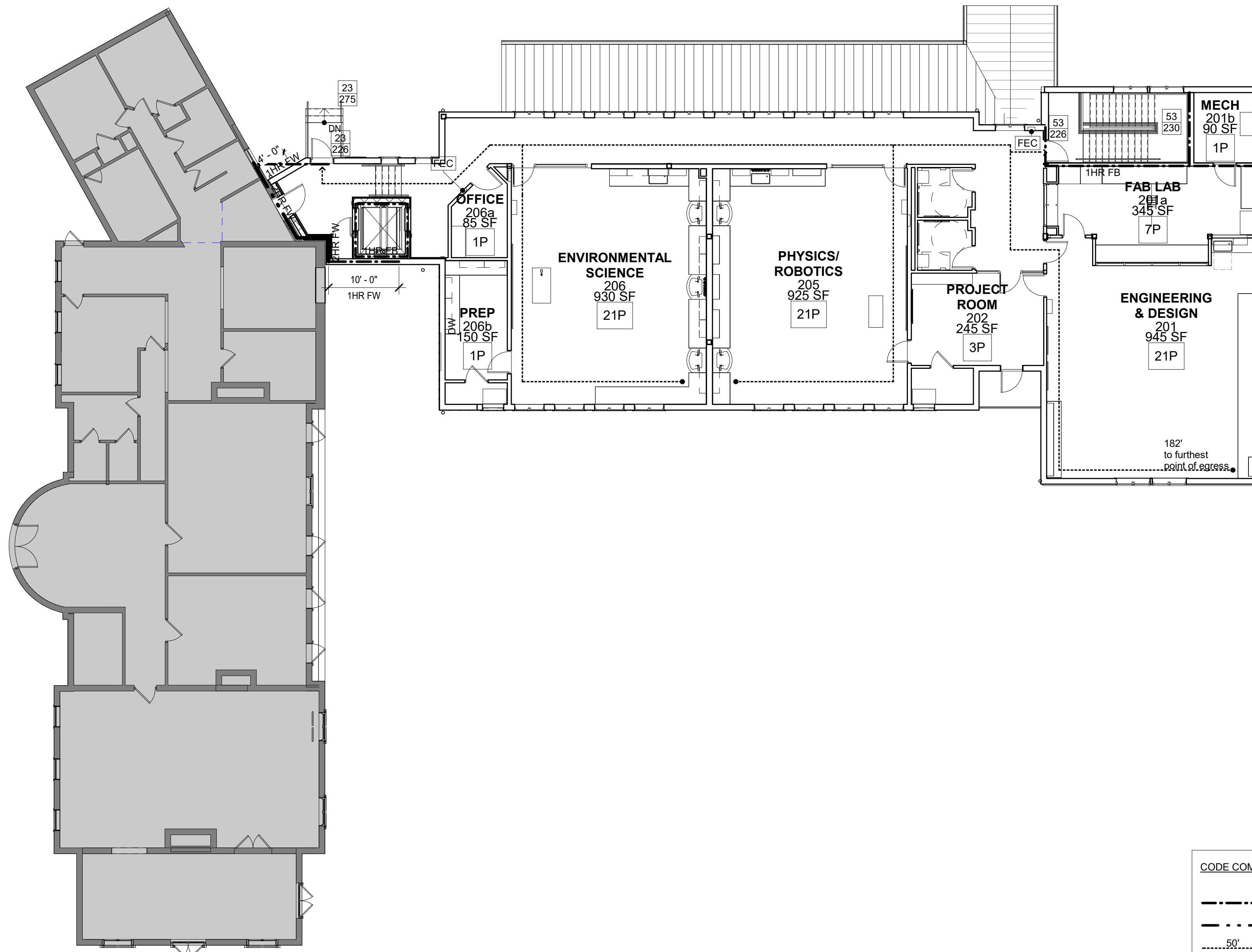
Scale	Drawn / Checked
AS NOTED	KG+D / KG+D

Sheet Number

CC-1



1 FIRST FLOOR EGRESS PLAN
3/32" = 1'-0"



2 SECOND FLOOR EGRESS PLAN
3/32" = 1'-0"

CODE COMPLIANCE LEGEND	
---	1 HR FIRE BARRIER
- - -	2 HR FIRE WALL
.....50'.....	EXIT DISTANCE
10P	ROOM OCCUPANCY
45	ACTUAL EGRESS OCCUPANCY
226	MAX ALLOWABLE LOADING

STREAM Center for
Experiential
Learning
SCHOOL OF THE HOLY
CHILD
2225 WESTCHESTER AVE,
RYE, NY

KG+D listen
imagine
build
KG+D . ARCHITECTS PC
285 MAIN STREET MOUNT KISCO . NEW YORK . 10549
P:914.666.5900 KGDARCHITECTS.COM

CONSTRUCTION
DOCUMENTS

KEY PLAN

NOTE: ALL IDEAS, DESIGNS, ARRANGEMENTS AND PLANS INDICATED OR REPRESENTED BY THIS DRAWING ARE OWNED BY AND ARE THE PROPERTY OF KWIETER, GARMENT & DAVIDSON ARCHITECTS, PC (KG&D), AND WERE CREATED FOR USE ON THIS PROJECT. NONE OF SUCH IDEAS, DESIGNS, ARRANGEMENTS OR PLANS SHALL BE USED BY OR DISCLOSED TO ANY PURPOSE WHATSOEVER WITHOUT THE WRITTEN PERMISSION OF KG&D.

WRITTEN DIMENSIONS ON THIS DRAWING SHALL HAVE PRECEDENCE OVER SCALED DIMENSIONS. CONTRACTOR SHALL VERIFY ALL ACTUAL DIMENSIONS AND CONDITIONS ON THE JOB AND THE ARCHITECT MUST BE NOTIFIED OF ANY VARIATIONS FROM DIMENSIONS AND CONDITIONS SHOWN. SHOP DETAILS MUST BE SUBMITTED TO THIS OFFICE FOR APPROVAL BEFORE PROCEEDING WITH FABRICATION.

ALTERATIONS BY ANY PERSON, IN ANY WAY, OF ANY ITEM CONTAINED ON THIS DOCUMENT, UNLESS ACTING UNDER THE DIRECTION OF THE LICENSED ARCHITECT WHOSE PROFESSIONAL SEAL IS AFFIXED HERETO, IS A VIOLATION OF TITLE V.L. SECT. 60.6 (b) OF NEW YORK STATE LAW.
COPYRIGHT KWIETER, GARMENT + DAVIDSON ARCHITECTS & ENGINEERS, PC
ALL RIGHTS RESERVED.

Professional Seal

No.	Date	Issue
7	8/12/2021	ISSUED FOR BID
6	6/25/2021	ISSUED FOR PERMIT
3	02/21/2020	DESIGN DEVELOPMENT

Sheet Title

CODE
COMPLIANCE
DRAWINGS

Job No.	Date
2018-1078	02/12/2020
Scale	Drawn / Checked
AS NOTED	KG+D / KG+D

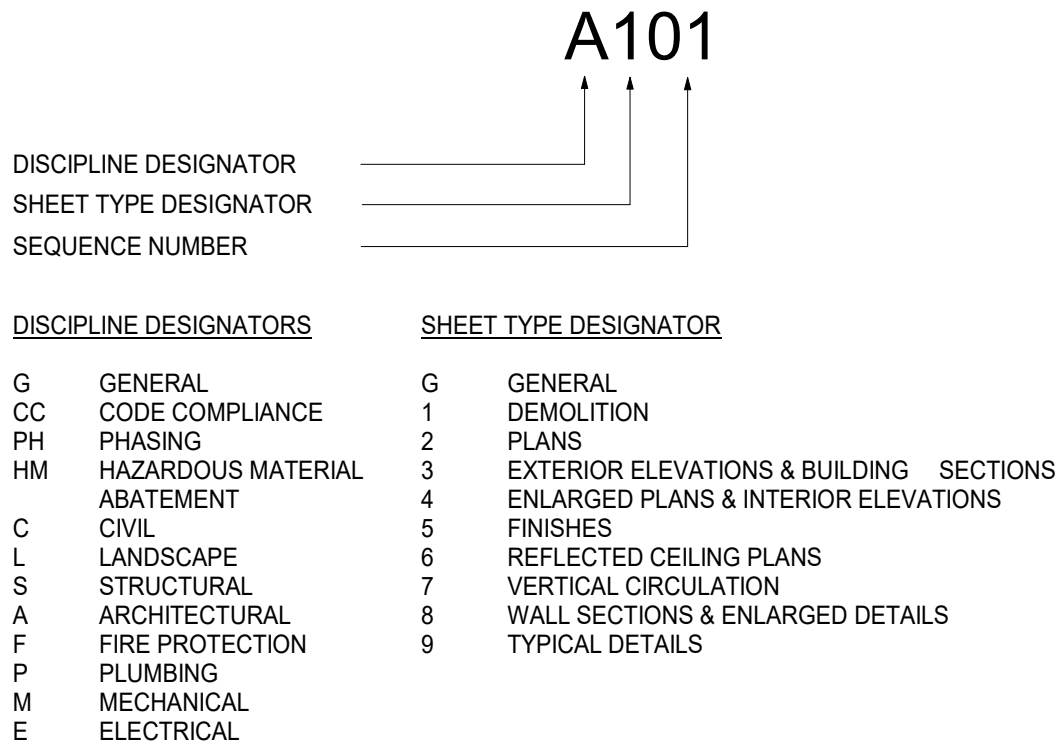
Sheet Number

CC-2

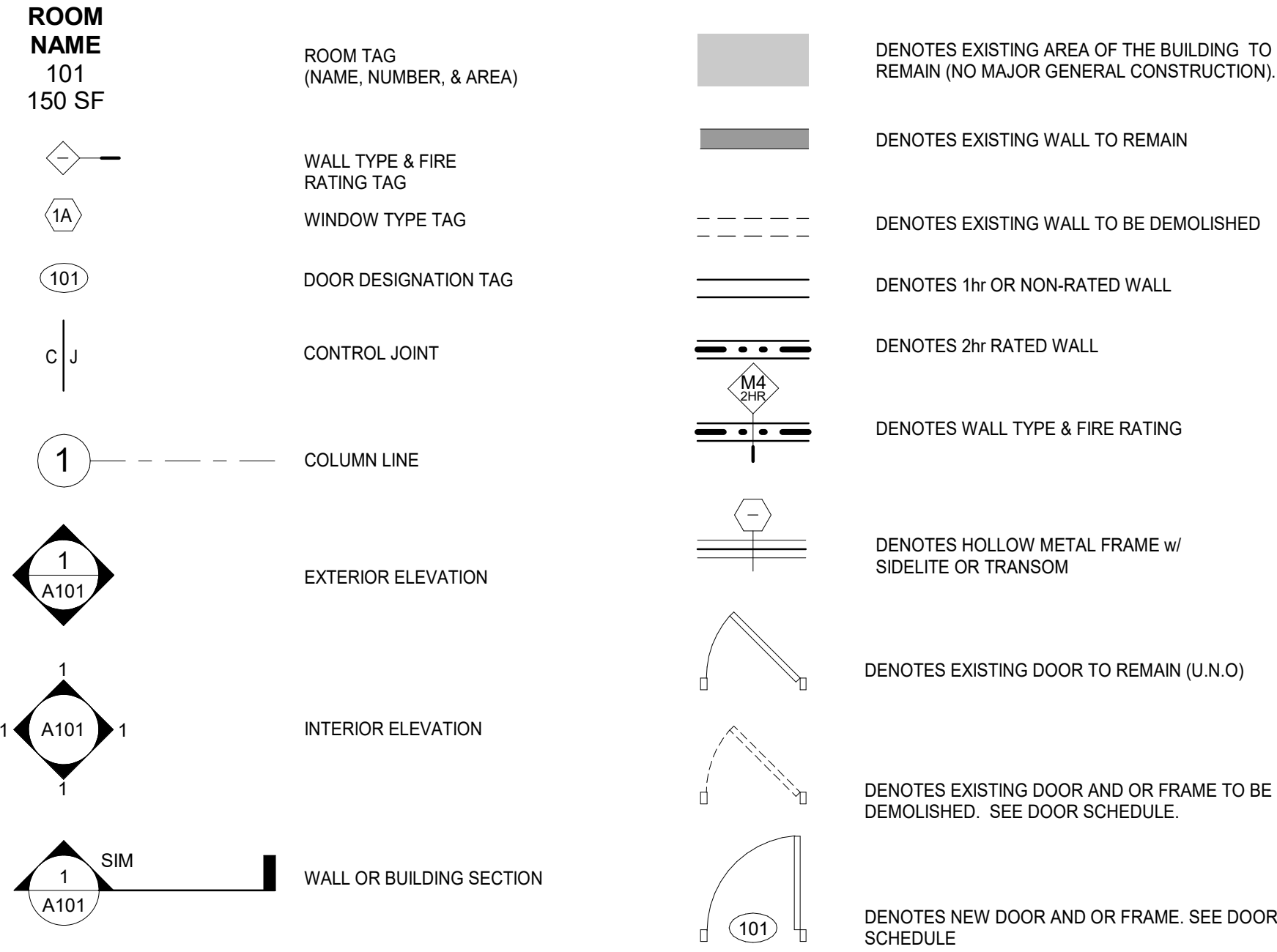
ABBREVIATIONS

AFF	ABOVE FINISH FLOOR	MAINT	MAINTAIN/MAINTENANCE
ACM	ASBESTOS CONTAINING MATERIAL	MAX	MAXIMUM
ACPL	ACOUSTIC PANEL	MFG	MANUFACTURER
ACT	ACOUSTIC CEILING TILE	MSNRY	MASONRY
ADJ	ADJUSTABLE	MO	MASONRY OPENING
AC	AIR CONDITIONING	MATL	MATERIAL
ADA	AMERICAN WITH DISABILITIES ACT	MECH	MECHANICAL
AESS	ARCHITECTURAL EXPOSED STRUCTURAL STEEL	MTL	METAL
AHAP	AS HIGH AS POSSIBLE	MCP	METAL COMPOSITE PANEL
AHU	AIR HANDLING UNIT	MCB	METAL CORNER BEAD
ALUM	ALUMINUM	MS	METAL STUD
AMP	ACRYLIC MODIFIED POLYESTER	MLWK	MILL WORK
APPROX	APPROXIMATE	MIN	MINIMUM
		MISC	MISCELLANEOUS
BEPO	BROADCAST EPOXY	MILDG	MOLDING
BTW	BETWEEN	MTD	MOUNTED
BLKG	BLOCKING	MTG	MOUNTING
BOT	BOTTOM		
BLDG	BUILDING	NIC	NOT IN CONTRACT
BL	BUILDING LINE	NTS	NOT TO SCALE
		NO	NUMBER
CAB	CABINET		
CB	CEMENT BOARD	OC	ON CENTER
CFS	COLD FORMED STEEL	OPNG	OPENING
CI	CAST IRON	OPP	OPPOSITE
CLG	CEILING	OH	OPPOSITE HAND
CL	CENTER LINE	OTS	OPEN TO STRUCTURE
CMU	CONCRETE MASONRY UNIT	OUT	OUTLET
COL	COLUMN	OD	OUTSIDE DIAMETER
CONC	CONCRETE	OF	OUTSIDE FACE
CONF	CONFERENCE		
CONST	CONSTRUCTION	P	PAINTED
CONTR	CONTRACTOR	PT	PORCELAIN TILE
CNT	CONTINUOUS	PTB	PORCELAIN TILE BASE
CPT	CARPET	PTD	PAINTED
CT	CERAMIC TILE	PR	PAIR
CTB	CERAMIC TILE BASE	PNL	PANEL
		PTN	PARTITION
DA	DEVICE ARRANGEMENT	PL	PROPERTY LINE
DET	DETAIL	PLAM	PLASTIC LAMINATE
DF	DRINKING FOUNTAIN	PLMB	PLUMBING
DIM	DIMENSION	PLYWD	PLYWOOD
DR	DOOR	PTWD	PRESERVATIVE TREATED WOOD
DN	DOWN		
DWG	DRAWING	QT	QUARRY TILE
		QTB	QUARRY TILE BASE
EA	EACH	QTY	QUANTITY
EE	EACH END		
EIFS	EXTERIOR INSULATION FINISH SYSTEM	RCP	REFLECTED CEILING PLAN
EJ	EXPANSION JOINT	REFL	REFLECTED
ELEC	ELECTRIC/ELECTRICAL	REQD	REQUIRED
EL/ELEV	ELEVATION	RB	RUBBER BASE
ENCL	ENCLOSURE	RTN	RETURN
EOD	EDGE OF DECK	RA	RETURN AIR
EOS	EDGE OF SLAB	REV	REVISED/REVISION
EPO	EPOXY	RFI	REQUEST FOR INFORMATION
EPS	EDGE OF POUR STOP	RO	ROUGH OPENING
EQ	EQUAL	RT	RUBBER TREAT/TILE
ES	EACH SIDE	RTB	RUBBER TREAD BASE
EXST	EXISTING	RTT	RESILIENT TERRAZZO TILE
ETR	EXISTING TO REMAIN	RW	RESCUE WINDOW
ETRE	EXISTING TO BE RELOCATED		
EXP JT	EXPANSION JOINT	S	SAFETY GLAZING/SEE SPEC
EXT	EXTERIOR	SCHED	SCHEDULE/SCHEDULED
EW	EACH WAY	SECT	SECTION
		SF	SQUARE FEET
FAB	FABRIC	SFB	SPLIT FACE BLOCK
FTF	FACE TO FACE	SH	SHELVING/SHELF/SHELVES
FIN	FINISHED	SIM	SIMILAR
FA	FIRE ALARM	SL	SLATE
FD	FLOOR DRAIN	STC	SOUND TRANSMISSION CLASS
FDMPR	FIRE DAMPER	SPEC	SPECIFICATION
FE	FIRE EXTINGUISHER	SQFT	SQUARE FOOT
FEC	FIRE EXTINGUISHER CABINET	ST	SAND, STAIN & SEAL
FF	FACTORY FINISH	STL	STAINLESS STEEL
FHC	FIRE HOSE CABINET	STL	STEEL
FHVC	FIRE HOSE VALVE CABINET	STR	STRUCTURAL/STRUCTURE
FR	FIRE PROTECTION	SUSP	SUSPENDED/SUSPENSION
FR	FIRE RATED		
FRD	FRENCH DRAIN	T	TOP
FFSC	FIRE RATED ASSEMBLY (DOORS)	TB	TACKBOARD
FRTD	FIRE RETARDANT	TBD	TO BE DETERMINED
FIX	FIXTURE	TERR	TERRAZZO
FLU/LR	FLOOR	TFF	TOP FINISHED FLOOR
FLUOR	FLUORESCENT	THERMO	THERMOSTAT
FLMTD	FLUSH MOUNTED	THK	THICK
FT	FOOT/FEET	TMP GL	TEMPERED GLASS
FON	FOUNDATION	T&B	TOP AND BOTTOM
FRITZ	FRITZ FLOOR (RTT) TILE	TO	TOP OF
		TOS	TOP OF STEEL
GALV	GALVANIZED	TOSS	TOP OF STRUCTURAL SLAB
GFB	GROUND FACE BLOCK	TOES	TOP OF EXISTING SLAB
GFRG	GLASS FIBER REINFORCED GYPSUM	TRT	TERRAZZO RESILIENT TILE
GL	GLASS	TYP	TYPICAL
GOG	GOGGLE		
GWB	GYPSUM WALLBOARD	UNFIN	UNFINISHED
		UNO	UNLESS NOTED OTHERWISE
H	HEIGHT AFF	UR	URINAL
HDW	HARDWARE	UTIL	UTILITY
HDWD	HARDWOOD		
HD	HEAD	VAT	VINYL ASBESTOS TILE
HDR	HEADER	VCT	VINYL COMPOSITE TILE
HVAC	HEATING, VENTILATING, AIR CONDITIONING	VEN	VENEER
HR	HOUR	VERT	VERTICAL
HT	HEIGHT	VET	VINYL ENHANCED TILE
HM	HOLLOW METAL	VIF	VERIFY IN FIELD
HMFR	HOLLOW METAL FRAME	VRS	VINYL REDUCER STRIP
HORIZ	HORIZONTAL	VT	VINYL TILE
HC	HANDICAP	VWC	VINYL WALL COVERING
		WB	WHITEBOARD
IF	INSIDE FACE	WC	WATER CLOSET
IN	INCH/INCHES	WF	WATER FOUNTAIN
INCL	INCLUDE/INCLUSIVE	WGL	WIRE GLASS
INFO	INFORMATION	W/	WITH
INSUL	INSULATION	W/C	WHEEL CHAIR
INT	INTERIOR	W/O	WITHOUT
		WOM	WALK OFF MAT
JC	JANITOR'S CLOSET	WD	WOOD
JT	JOINT	WD	WOOD
		WD BLKG	WOOD BLOCKING
KPL	KICK PLATE	WD DR	WOOD DOOR
KD	KNOCKDOWN	WP	WATERPROOFING
KO	KNOCKOUT	WR	WARDROBE
		WW	WINDOW WALL
LAM	LAMINATED		
LAMGL	LAMINATED GLASS	YD	YARD
LT	LIGHT	YCO	YARD CLEANOUT
LTG	LIGHTING		
LWC	LIGHT WEIGHT CONCRETE	ZCC	ZINC COATED COPPER
LIN	LINOLEUM		
LVT	LUXURY VINYL PLANK & TILE		

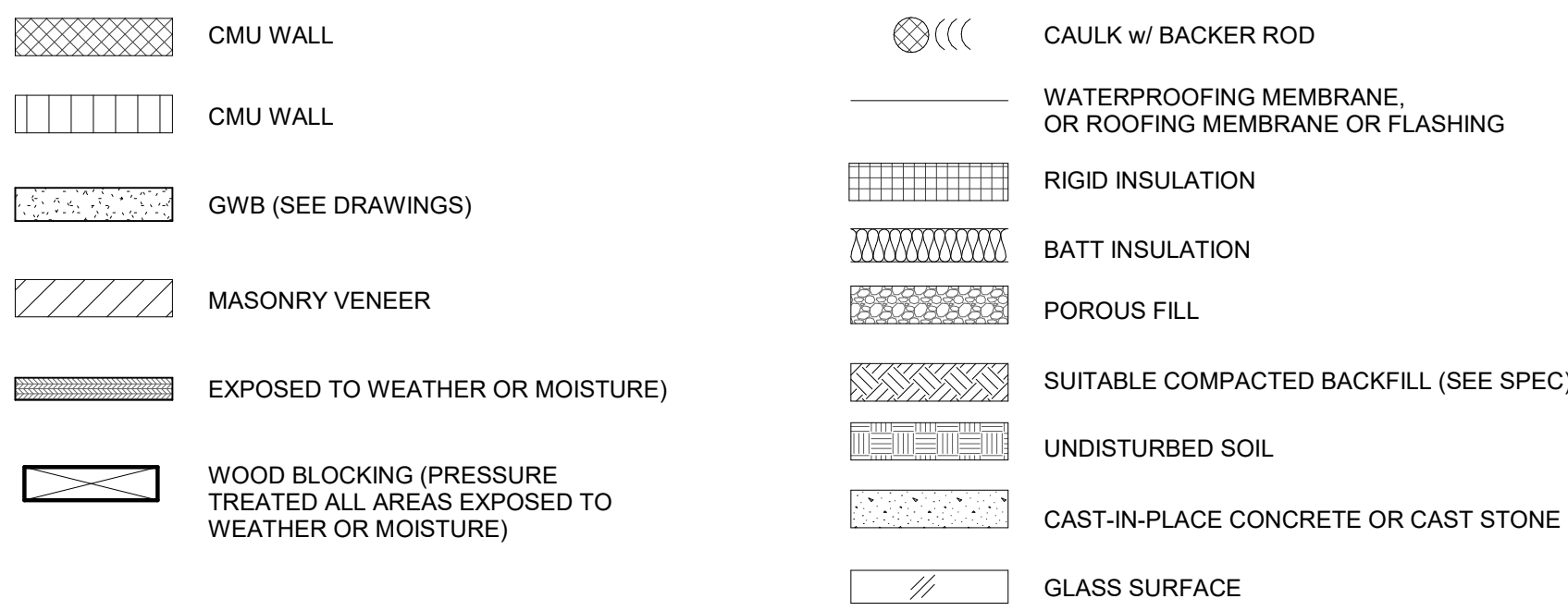
SHEET IDENTIFICATION LEGEND



SYMBOLS LEGEND



MATERIAL LEGEND



UNIFORM SAFETY STANDARDS FOR SCHOOL CONSTRUCTION AND MAINTENANCE PROJECTS

THE OCCUPIED PORTION OF THE EXISTING SCHOOL BUILDING SHALL ALWAYS COMPLY WITH THE MINIMUM REQUIREMENTS NECESSARY TO MAINTAIN A CERTIFICATE OF OCCUPANCY.

ALL SCHOOL AREAS TO BE DISTURBED DURING RENOVATION OR DEMOLITION HAVE BEEN OR WILL BE TESTED FOR LEAD AND ASBESTOS.

GENERAL SAFETY AND SECURITY STANDARDS FOR CONSTRUCTION PROJECTS:

- (A) ALL CONSTRUCTION MATERIALS SHALL BE STORED IN A SAFE AND SECURE MANNER.
- (B) FENCES AROUND CONSTRUCTION SUPPLIES OR DEBRIS SHALL BE MAINTAINED.
- (C) GATES SHALL ALWAYS BE LOCKED UNLESS A WORKER IS IN ATTENDANCE TO PREVENT UNAUTHORIZED ENTRY.
- (D) DURING EXTERIOR RENOVATION WORK, OVERHEAD PROTECTION SHALL BE PROVIDED FOR ANY SIDEWALKS OR AREAS IMMEDIATELY BENEATH THE WORK SITE OR SUCH AREAS SHALL BE FENCED OFF AND PROVIDED WITH WARNING SIGNS TO PREVENT ENTRY.
- (E) WORKERS SHALL BE REQUIRED TO WEAR PHOTO-IDENTIFICATION BADGES AT ALL TIMES FOR IDENTIFICATION AND SECURITY PURPOSES WHILE WORKING AT OCCUPIED SITES.

SEPARATION OF CONSTRUCTION AREAS FROM OCCUPIED SPACES:

CONSTRUCTION AREAS WHICH ARE UNDER THE CONTROL OF A CONTRACTOR AND THEREFORE NOT OCCUPIED BY DISTRICT STAFF OR STUDENTS SHALL BE SEPARATED FROM OCCUPIED AREAS. PROVISIONS SHALL BE MADE TO PREVENT THE PASSAGE OF DUST AND CONTAMINANTS INTO OCCUPIED PARTS OF THE BUILDING. PERIODIC INSPECTION AND REPAIRS OF THE CONTAINMENT BARRIERS MUST BE MADE TO PREVENT EXPOSURE TO DUST OR CONTAMINANTS. GYPSUM BOARD MUST BE USED IN EXIT WAYS OR OTHER AREAS THAT REQUIRE FIRE RATED SEPARATION. HEAVY DUTY PLASTIC SHEETING MAY BE USED ONLY FOR A VAPOR, FINE DUST OR AIR INFILTRATION BARRIER, AND SHALL NOT BE USED TO SEPARATE OCCUPIED SPACES FROM CONSTRUCTION AREAS.

- (A) A SPECIFIC STAIRWELL AND/OR ELEVATOR SHOULD BE ASSIGNED FOR CONSTRUCTION WORKER USE DURING WORK HOURS. IN GENERAL, WORKERS MAY NOT USE CORRIDORS, STAIRS OR ELEVATORS DESIGNATED FOR STUDENTS OR SCHOOL STAFF.
- (B) LARGE AMOUNTS OF DEBRIS MUST BE REMOVED BY USING ENCLOSED CHUTES OR A SIMILAR SEALED SYSTEM. THERE SHALL BE NO MOVEMENT OF DEBRIS THROUGH HALLS OF OCCUPIED SPACES OF THE BUILDING. NO MATERIAL SHALL BE DROPPED OR THROWN OUTSIDE THE WALLS OF THE BUILDING.
- (C) ALL OCCUPIED PARTS OF THE BUILDING AFFECTED BY RENOVATION ACTIVITY SHALL BE CLEANED AT THE CLOSE OF EACH WORKDAY. SCHOOL BUILDINGS OCCUPIED DURING A CONSTRUCTION PROJECT SHALL MAINTAIN REQUIRED HEALTH, SAFETY AND EDUCATIONAL CAPABILITIES AT ALL TIMES THAT CLASSES ARE IN SESSION.

A PLAN DETAILING HOW EXITING REQUIRED BY THE APPLICABLE BUILDING CODE WILL BE MAINTAINED.

A PLAN DETAILING HOW ADEQUATE VENTILATION WILL BE MAINTAINED DURING CONSTRUCTION.

CONSTRUCTION AND MAINTENANCE OPERATIONS SHALL NOT PRODUCE NOISE IN EXCESS OF 60 DBA IN OCCUPIED SPACES OR SHALL BE SCHEDULED FOR TIMES WHEN THE BUILDING OR AFFECTED BUILDING SPACES ARE NOT OCCUPIED OR ACOUSTICAL ABATEMENT MEASURES SHALL BE TAKEN.

THE CONTRACTOR SHALL BE RESPONSIBLE FOR THE CONTROL OF CHEMICAL FUMES, GASES, AND OTHER CONTAMINATES PRODUCED BY WELDING, GASOLINE OR DIESEL ENGINES, ROOFING, PAVING, PAINTING, ETC. TO ENSURE THEY DO NOT ENTER OCCUPIED PORTIONS OF THE BUILDING OR AIR INTAKES.

THE CONTRACTOR SHALL BE RESPONSIBLE TO ENSURE THAT ACTIVITIES AND MATERIALS WHICH RESULT IN "OFF-GASSING" OF VOLATILE ORGANIC COMPOUNDS SUCH AS GLUES, PAINTS, FURNITURE, CARPETING, WALL COVERING, DRAPERY, ETC. ARE SCHEDULED, CURED OR VENTILATED IN ACCORDANCE WITH MANUFACTURERS RECOMMENDATIONS BEFORE A SPACE CAN BE OCCUPIED.

LARGE AND SMALL ASBESTOS ABATEMENT PROJECTS AS DEFINED BY 12NYCRR56 SHALL NOT BE PERFORMED WHILE THE BUILDING IS OCCUPIED". NOTE, IT IS OUR INTERPRETATION THAT THE TERM "BUILDING", AS REFERENCED IN THIS SECTION, MEANS A WING OR MAJOR SECTION OF A BUILDING THAT CAN BE COMPLETELY ISOLATED FROM THE REST OF THE BUILDING WITH SEALED NON COMBUSTIBLE CONSTRUCTION. THE ISOLATED PORTION OF THE BUILDING MUST CONTAIN EXITS THAT DO NOT PASS THROUGH THE OCCUPIED PORTION AND VENTILATION SYSTEMS MUST BE PHYSICALLY SEPARATED AND SEALED AT THE ISOLATION BARRIER. EXTERIOR WORK SUCH AS ROOFING, FLASHING, SIDING, OR SOFFIT WORK MAY BE PERFORMED ON OCCUPIED BUILDINGS PROVIDED PROPER VARIANCES ARE IN PLACE AS REQUIRED, AND COMPLETE ISOLATION OF VENTILATION SYSTEMS AND AT WINDOWS IS PROVIDED. CARE MUST BE TAKEN TO SCHEDULE WORK SO THAT CLASSES ARE NOT DISRUPTED BY NOISE OR VISUAL DISTRACTION.

SURFACES THAT WILL BE DISTURBED BY RECONSTRUCTION MUST HAVE A DETERMINATION MADE AS TO THE PRESENCE OF LEAD. PROJECTS WHICH DISTURB SURFACES THAT CONTAIN LEAD SHALL HAVE IN THE SPECIFICATIONS A PLAN PREPARED BY A CERTIFIED LEAD RISK ASSESSOR OR SUPERVISOR WHICH DETAILS PROVISIONS FOR OCCUPANT PROTECTION, WORKSITE PREPARATION, WORK METHODS, CLEANING AND CLEARANCE TESTING WHICH ARE IN GENERAL ACCORDANCE WITH THE HUD GUIDELINES.

PROJECT INFORMATION

OWNER
SCHOOL OF THE HOLY CHILD
2225 WESTCHESTER AVE
RYE, NEW YORK 10580

TELEPHONE: 914.967.5622

PROJECT LOCATION
SCHOOL OF THE HOLY CHILD
2225 WESTCHESTER AVE
RYE, NEW YORK 10580

TYPE OF PROJECT
NEW CONSTRUCTION

PROJECT COMMENCEMENT
TO BE DETERMINED

PROJECT COMPLETION
TO BE DETERMINED

APPLICABLE CODES
2020 INTERNATIONAL BUILDING CODE
2020 INTERNATIONAL EXISTING BUILDING CODE
2020 INTERNATIONAL FIRE CODE

WORK AREAS
ADDITION

SEE DRAWING CC-2 FOR WORK AREA PLANS

STREAM Center for Experiential Learning

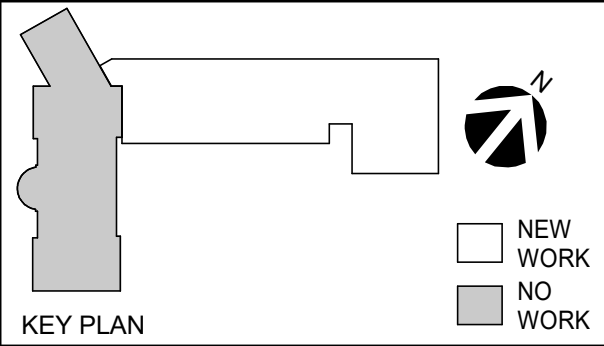
SCHOOL OF THE HOLY CHILD
2225 WESTCHESTER AVE,
RYE, NY

KG+D listen imagine build

KG+D . ARCHITECTS PC

285 MAIN STREET MOUNT KISCO . NEW YORK . 10549
P:914.666.5900 KGDARCHITECTS.COM

CONSTRUCTION DOCUMENTS



NOTE: ALL IDEAS, DESIGNS, ARRANGEMENTS AND PLANS INDICATED OR REPRESENTED BY THIS DRAWING ARE OWNED BY AND ARE THE PROPERTY OF KAYTER, GARMENT & DAVIDSON ARCHITECTS, PC (KGD), AND WERE CREATED FOR USE ON THIS PROJECT. NONE OF SUCH IDEAS, DESIGNS, ARRANGEMENTS OR PLANS SHALL BE USED BY OR DISCLOSED TO ANY PURPOSE WHATSOEVER WITHOUT THE WRITTEN PERMISSION OF KGD.

WRITTEN DIMENSIONS ON THIS DRAWING SHALL HAVE PRECEDENCE OVER SCALED DIMENSIONS. CONTRACTOR SHALL VERIFY ALL ACTUAL DIMENSIONS AND CONDITIONS ON THE JOB AND THE ARCHITECT MUST BE NOTIFIED OF ANY VARIATIONS FROM DIMENSIONS AND CONDITIONS SHOWN. SHOP DETAILS MUST BE SUBMITTED TO THIS OFFICE FOR APPROVAL BEFORE PROCEEDING WITH FABRICATION.

ALTERATIONS BY ANY PERSON, IN ANY WAY, OF ANY ITEM CONTAINED ON THIS DOCUMENT, UNLESS ACTING UNDER THE DIRECTION OF THE LICENSED ARCHITECT INSIDE PROFESSIONAL SEAL IS AFFIXED HERETO, IS A VIOLATION OF TITLE V&L SECT. 60.6 (b) OF NEW YORK STATE LAW. COPYRIGHT KAYTER, GARMENT & DAVIDSON ARCHITECTS & ENGINEERS, PC. ALL RIGHTS RESERVED.

Professional Seal

7	8/12/2021	ISSUED FOR BID
6	6/25/2021	ISSUED FOR PERMIT
3	02/21/2020	DESIGN DEVELOPMENT
No.	Date	Issue

Sheet Title

GENERAL INFORMATION

Job No. 2018-1078 Date 02/12/2020

Scale AS NOTED Drawn / Checked KG+D / KG+D

Sheet Number

G001