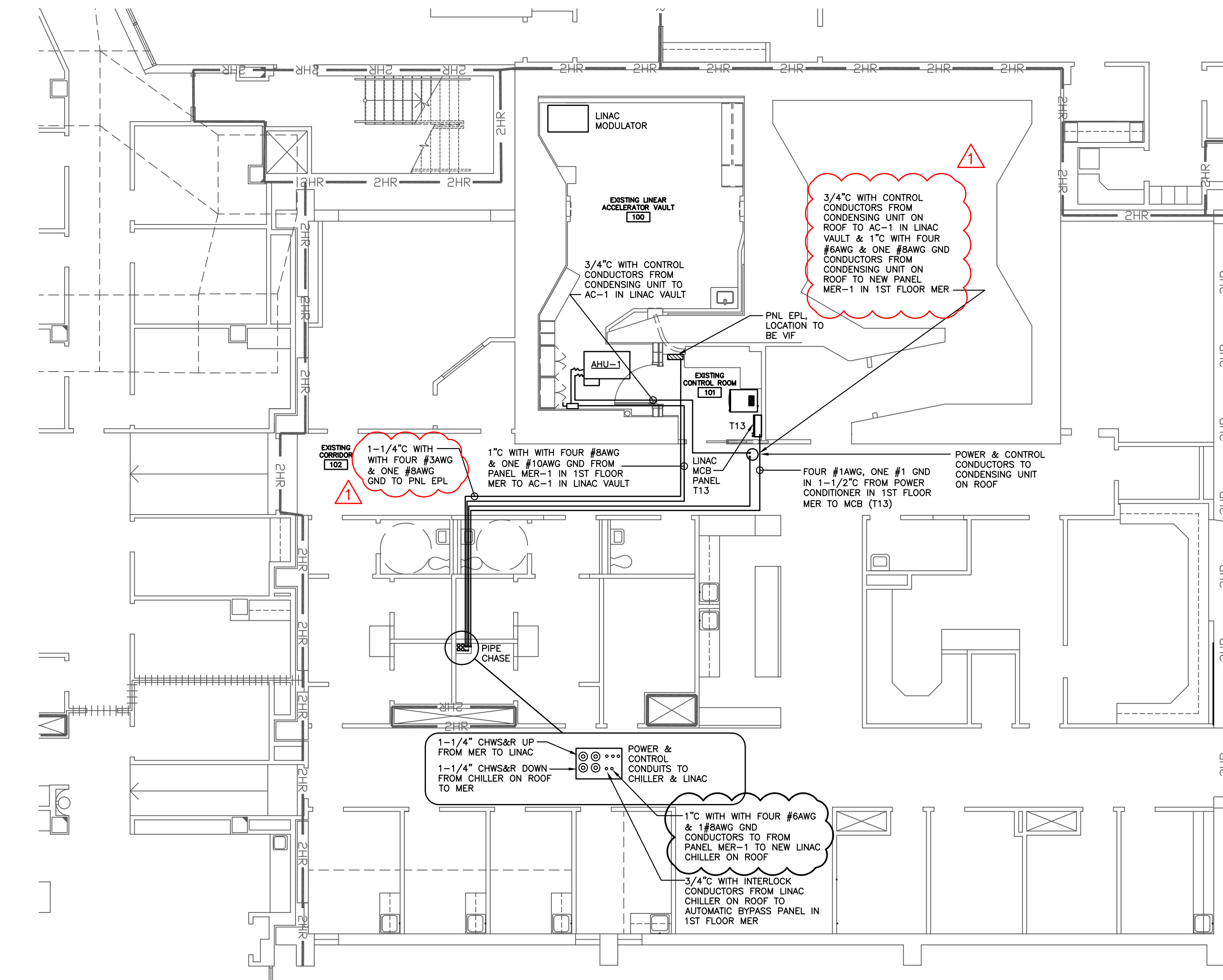
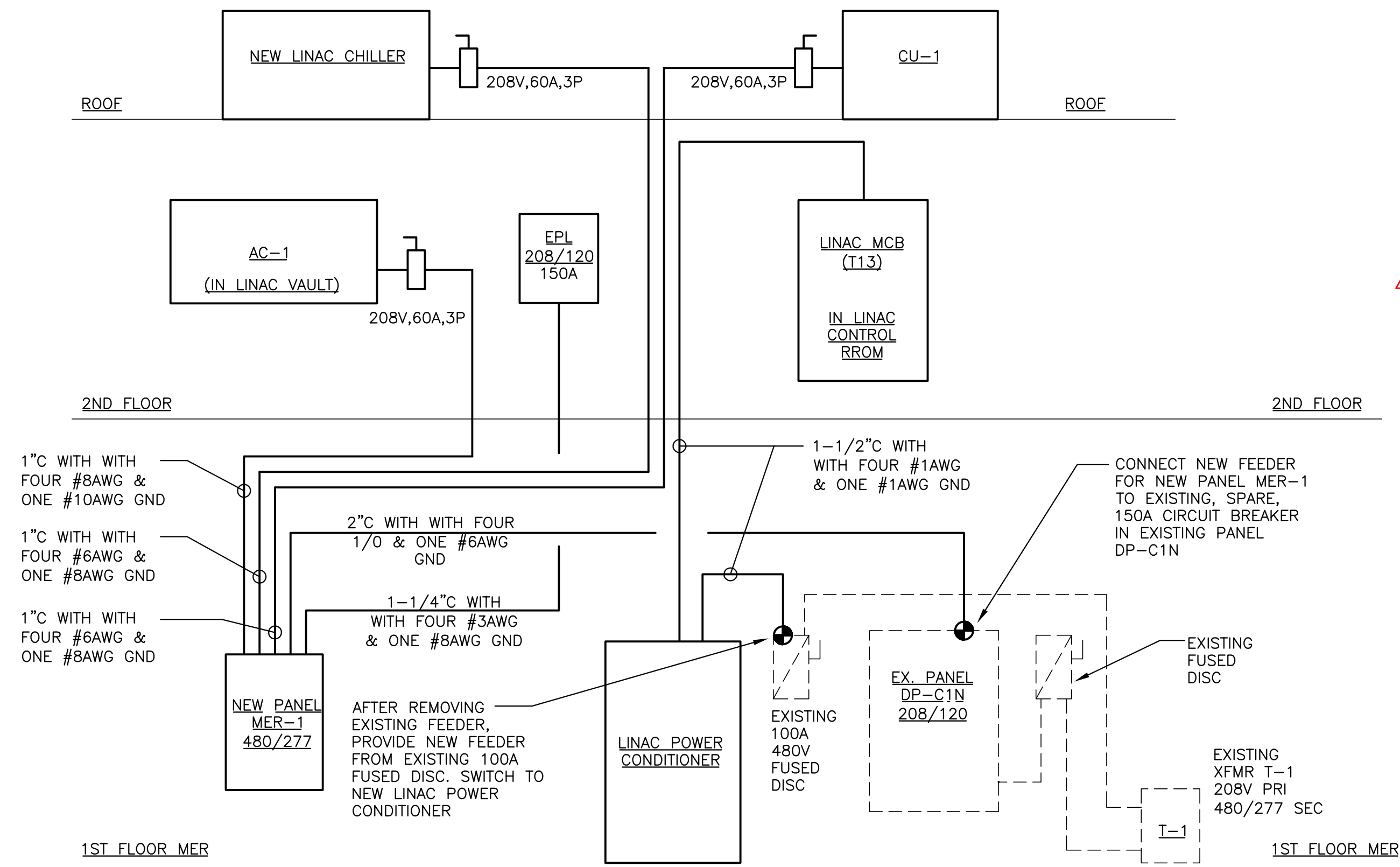


REFER TO FIGURE 3-1 "RJB CUSTOMER CONNECTIONS" AND TABLE 3-10 "RJB CONNECTIONS" IN THE VARIAN PRODUCT PLANNING GUIDE

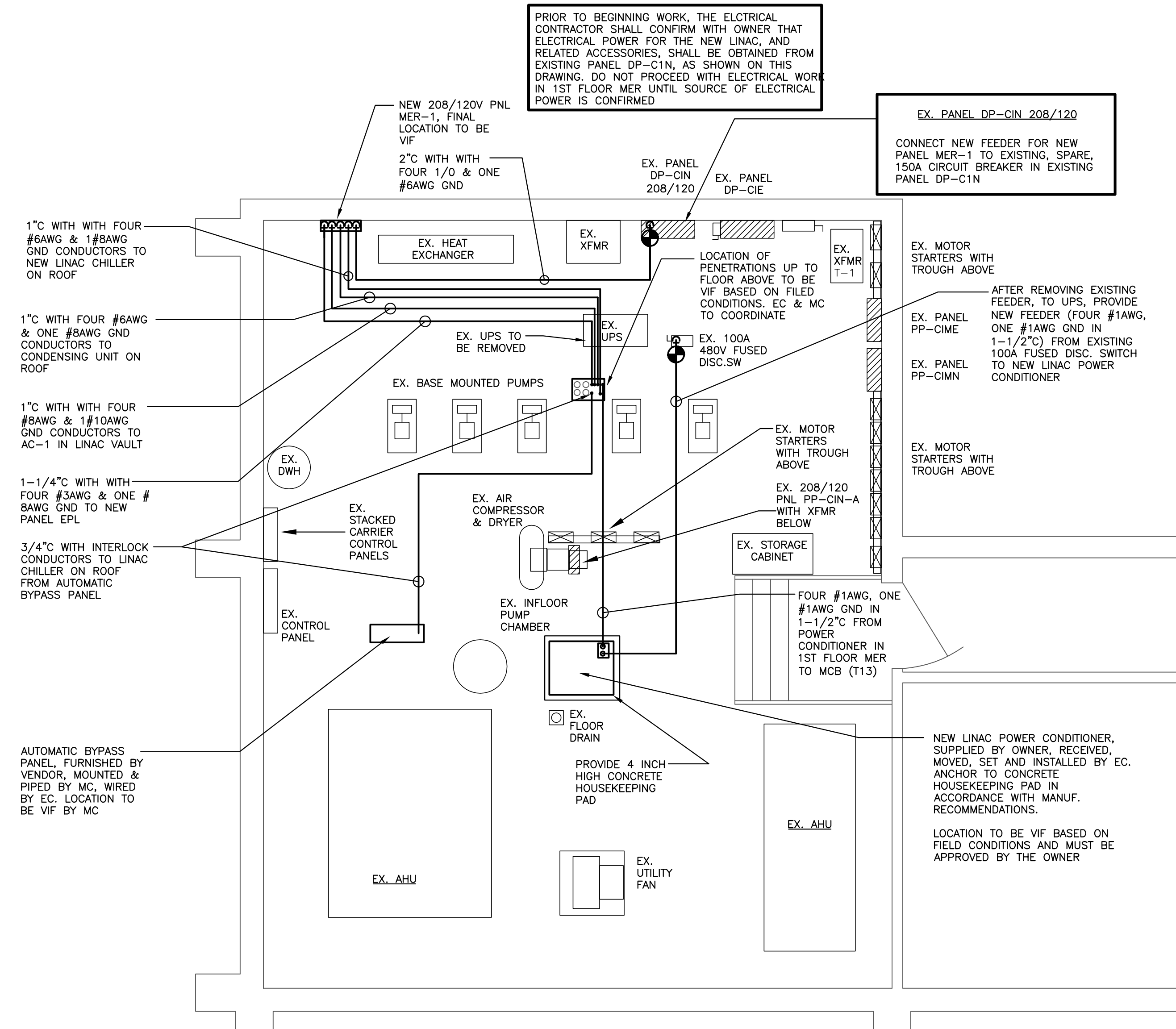
4 RELAY JUNCTION BOX (T05) WIRING DETAIL  
NOT TO SCALE



2 PARTIAL FIRST FLOOR PLAN - ELECTRICAL  
1/8" = 1'-0"



3 ELECTRICAL RISER DIAGRAM  
NOT TO SCALE



1 PARTIAL FIRST FLOOR PLAN - MECHANICAL EQUIPMENT ROOM ELECTRICAL PLAN  
1/2" = 1'-0"

© 2020 SJM ASSOCIATES

M.E.P. ENGINEER  
SJM Associates Consulting Engineers  
58 Brookside Drive  
West Shokan, New York 12494  
Ph: (845) 657-2072 Fax: (845) 657-2073

187 E. Market Street  
Suite 180  
Rhinebeck, NY 12572  
845 876 8202 phone  
845 876 8112 fax

optimus  
ARCHITECTURE

PROJECT # 2023  
Linear Accelerator Replacement for:  
VASSAR BROTHERS MEDICAL CENTER  
45 READE PLACE  
POUGHKEEPSIE, NEW YORK 12601  
DRAWING TITLE  
PARTIAL SECOND FLOOR PLAN - NEW POWER  
CONDUITS, FIRST FLOOR MER & RISER DIAGRAM  
SCALE AS NOTED  
DATE 12/03/20  
REVISIONS  
# 1  
DATE 12/03/20  
ISSUED FOR BID, PERMIT AND CONSTRUCTION  
REVISED EXISTING PANEL DP-CIN  
DRAWN BY: CHIKED, BY: S/JM  
DATE 12/03/20  
REVISIONS  
# 1  
DATE 12/03/20  
ISSUED FOR BID, PERMIT AND CONSTRUCTION  
REVISED EXISTING PANEL DP-CIN

DRAWING NUMBER:  
E104



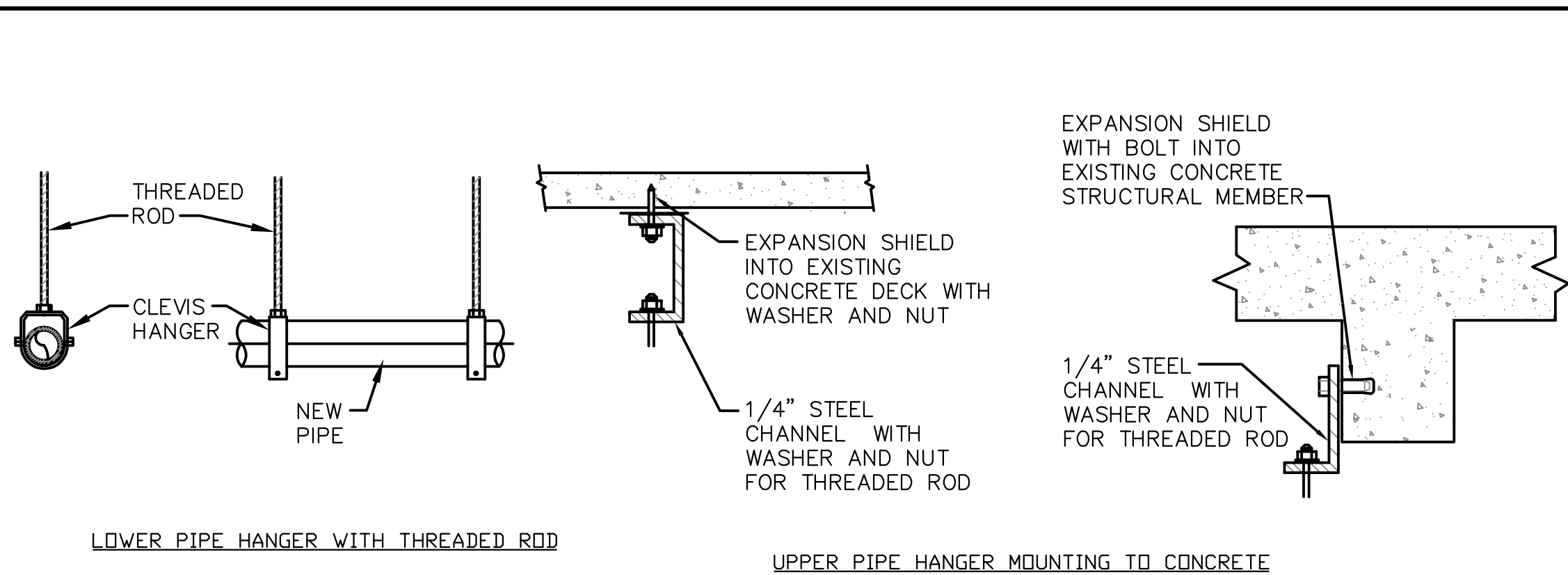
Lighting Fixture Schedule								
Type	Manuf.	Model No.	Description	Mounting	Voltage	Type	Watts	Remarks
A	SKY FACTORY	EPA22-CLA	2'X2' RECESSED L.E.D. LIGHTED SCENE LUMINAIRE - LIGHTED SCENE IMAGE TO BE SELECTED BY OWNER	RECESSED	120	L.E.D.	23	SEE NOTES
B	COLUMBIA	LCAT22-35-ML-G-EDU-U	2'X4' RECESSED L.E.D. ARCHITECTURAL LUMINAIRE DIRECT/INDIRECT	RECESSED	120	L.E.D.	29	SEE NOTES
C	PRESCOLITE	LF4SL-DM-U-4-FSL20L-35K8-R24	4 INCH RECESSED LED DOWNLIGHT	RECESSED	120	L.E.D.	22.1	SEE NOTES
D	PRESCOLITE	LTR-4RA-H-30L-35K-8-WD-DM-U-CP-LTR-4RA-T-PH-WC-WT	4 INCH RECESSED LED DOWNLIGHT	RECESSED	120	L.E.D.	35	SEE NOTES
UC	FEELUX	VSSL	DIMMABLE UNDER CABINET TASK L.E.D. LIGHTING FIXTURE. LENGTH OF FIXTURE TO MATCH CABINET LENGTH, SEE PLAN	SURFACE	120	L.E.D.	VARIABLE BY LENGTH	SEE NOTES
WARNING SIGN	EMERGI-LITE	WWP-PU-1-RW	DIECAST ALUMINUM WARNING SIGN, TYPICAL FOR 5 "BEAM READY", "BEAM ON", "BEAM OFF", "GENERATOR ON", "X-RAY ON"	SURFACE	120	LED		SEE NOTES
EXIT	EMERGI-LITE	PRESTIGE X40 SERIES LSXX--R-C, ARROWS AS REQUIRED BY LOCATION	DIE CAST ALUMINUM EDGE LIT L.E.D. EXIT SIGN WITH BATTERY BACKUP	RECESSED	120	LED		SEE NOTES
EM	SURE LIGHTS	SEL50-SD	WALL MOUNTED EMERGENCY LIGHT	SURFACE	120	LED	1.2	SEE NOTES

- PROVIDE ALL DIMMABLE FIXTURES WHERE SHOWN ON PLANS WITH CORRESPONDING DIMMER CONTROL, COORDINATED WITH FIXTURE MANUFACTURER.
- ALL FIXTURES ARE TO HAVE A MINIMUM COLOR RENDERING INDEX OF 80 & COLOR TEMPERATURE OF 3500K, UNLESS NOTED OTHERWISE.
- PROVIDE HANGING BARS SUITABLE FOR MOUNTING OF RECESSED DOWN LIGHTS IN SPECIFIC CEILING TYPE..
- PROVIDE HARDWARE & FASTENERS AS REQUIRED FOR MOUNTING OF ALL FIXTURES.
- PROVIDE EXIT SIGNS SINGLE OR DOUBLE SIDED, WITH DIRECTIONAL ARROWS AS REQUIRED BY LOCATION.
- ARCHITECT SHALL SELECT ALL FINISHES AND COLORS. SEND A FULL LINE OF SAMPLE COLORS.
- "UC" UNDER CABINET LIGHTING SHALL EXTEND FULL LENGTH OF UPPER CABINET AS SHOWN ON PLANS. PROVIDE ALL ACCESSORIES RECOMMENDED OR REQUIRED BY THE MANUFACTURER, AND THE NYC ELECTRICAL CODE, FOR A COMPLETE AND FUNCTIONAL INSTALLATION. PROVIDE THE WITH THE FOLLOWING:  
MOUNTING CLIPS  
METAL BOX FOR HARD WIRING
- ALL 0-10 VOLT DIMMABLE FIXTURES SHALL BE CIRCUITED WITH CONTROL CONDUCTORS (GRAY AND VIOLET) IN ADDITION TO HOT, NEUTRAL AND GROND CONDUCTORS.

#### ELECTRICAL PANEL SCHEDULES

Electrical Panel name: EPL				FEEDER: 4-#3,1#8g, 1-1/4"C			
VOLTAGE: 208 120				MAINS: 150			
PHASE: 3				M.C.B. 80			
CKT. #	WIRE SIZE	TRIP	POLES	POLES	TRIP	WIRE SIZE	LOAD SERVED
1	2#12,1#12g	20	1	1	20	2#12,1#12g	RECPT. VAULT
3	2#12,1#12g	20	1	1	20	2#12,1#12g	RECPT. VAULT
5	2#12,1#12g	20	1	1	20	2#12,1#12g	RECPT. CONTROL ROOM
7	2#12,1#12g	20	1	1	20	2#12,1#12g	VAULT SET-UP & UC LIGHTS
9	SPARE	20	1	1	20	2#12,1#12g	VAULT DOOR
11	SPARE	20	1	1	20		SPARE
13	SPARE	20	1	1	20		SPARE
15	SPARE	20	1	1	20		SPARE
17	SPARE	20	1	1	20		SPARE
19	SPARE	20	1	1	20		SPARE
21	SPACE						SPACE
23	SPACE						SPACE
25	SPACE						SPACE
27	SPACE						SPACE
29	SPACE						SPACE

Electrical Panel name: MER-1				FEEDER: FOUR 1/0 & ONE #6AWG GND, 2"C			
VOLTAGE: 208 120				MAINS: 225			
PHASE: 3				MLO			
CKT. #	WIRE SIZE	TRIP	POLES	POLES	TRIP	WIRE SIZE	LOAD SERVED
1							
3							
5							
7							
9							
11							
13							
15							
17							
19							
21							
23							
25							
27							
29							



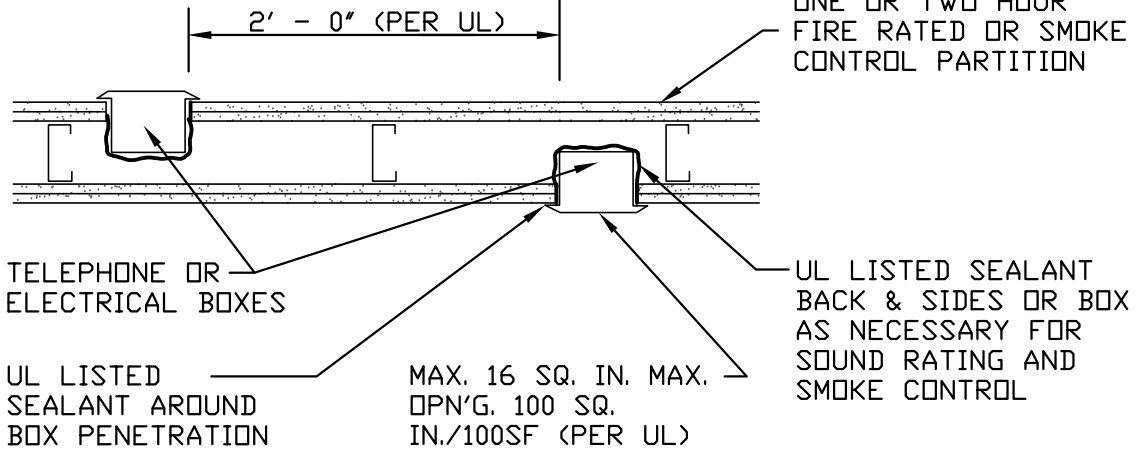
7 PIPE HANGING DETAILS  
SCALE: N.T.S.

#### ELECTRICAL LEGEND & SYMBOL LIST :

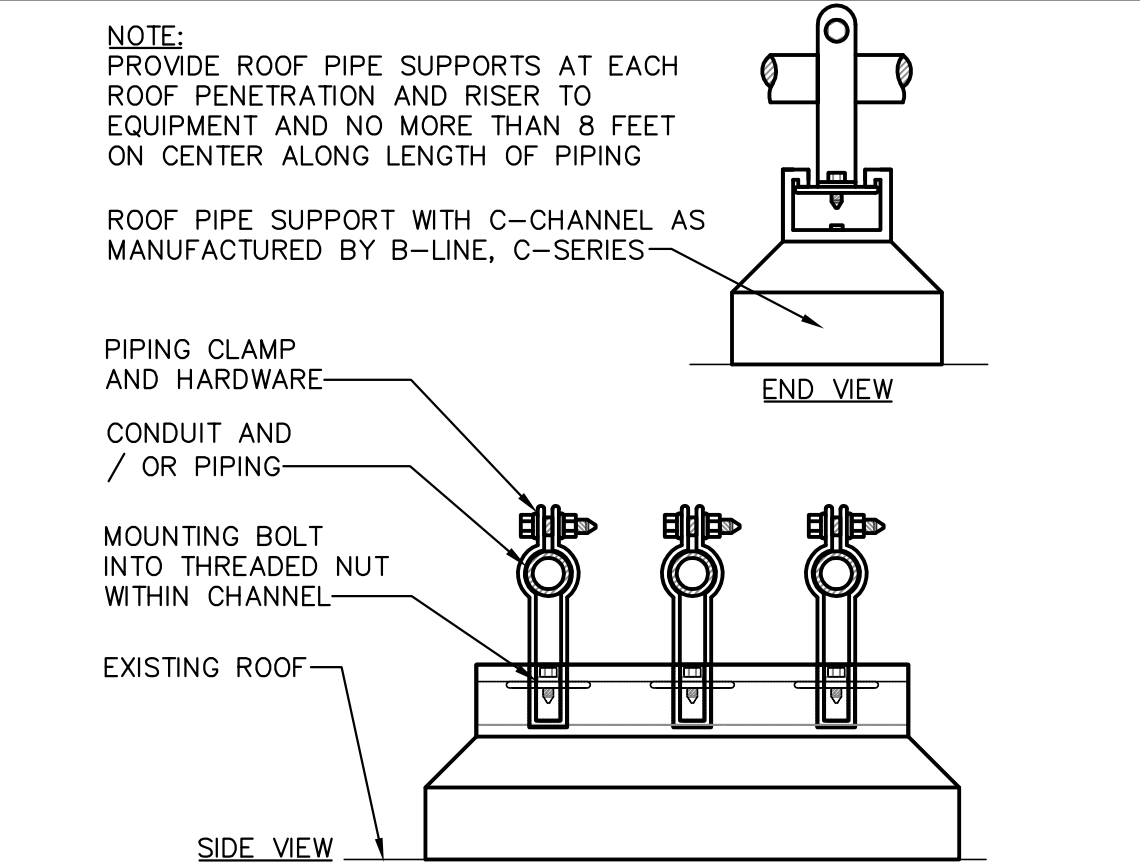
SYMBOL	DESCRIPTION
	FUSED DISCONNECT SWITCH
	DISCONNECT SWITCH
	MOTOR
	HOME RUN
	JUNCTION BOX
	DUPLEX ELECTRICAL POWER RECEPTACLE MTD 18" A.F.F.
	DUPLEX EMERGENCY POWERED RECEPTACLE MTD 18" A.F.F.
	DUPLEX RECEPTACLE MTD. AT NOTED HEIGHT A.F.F.
	GROUND FAULT PROTECTED RECEPTACLE
	WEATHERPROOF RECEPTACLE
	QUAD ELECTRICAL POWER RECEPTACLE
	SPECIAL PURPOSE RECEPTACLE
	TELEPHONE & DATA RECEPTACLE, DOUBLE GANG BOX W/ 3/4" CONDUIT TO ABOVE CEILING
	CABLE TV RECEPTACLE, SINGLE GANG BOX W/ 3/4" CONDUIT TO ABOVE CEILING
	FRACTIONAL HP RATED STARTER
	SWITCH
	3-WAY SWITCH
	DIMMER
	REMOTE DIMMER
	ROOM OCCUPANCY SENSOR
	EXIT LIGHT
	ELECTRICAL PANEL
	A.F.F. ABOVE FINISHED FLOOR
	N.I.C. NOT IN CONTRACT
	V.I.F. VERIFY IN FIELD
	U.G. UNDERGROUND
	SMOKE DETECTOR
	FIRE PULL STATION
	STROBE
	HORN STROBE
	EPO: ALLEN-BRADLEY 800T-FX6AV OR EQUIVALENT, TWO-POLE, DRY CONTACT TYPE, MANUAL RESET. PROVIDE WITH SUITABLE NEMA 1 SURFACE MOUNTED ENCLOSURE. E.C. TO INSTALL EPO IDENTIFICATION RESISTORS (FURNISHED BY VARIAN) ACROSS SENSOR LOOP CONTACTS OF EACH EPO. PROVIDE EACH EPO WITH HINGED, DRILLED, CLEAR PLASTIC PROTECTIVE COVER.
	AC & DC DOOR SWITCHES (TYPICAL FOR 2)
	DOOR SWITCH - NORMALLY OPEN (SWITCH OPEN WHEN DOOR IS OPEN); MAGNETIC REED SWITCH, EDWARDS SERIES 60, NORMALLY OPEN, 500 Ma @ 100 VOLTS EQUIVALENT PRODUCTS OF OTHER MANUFACTURERS MAY BE USED.

#### ABOVE CEILING COORDINATION DRAWING

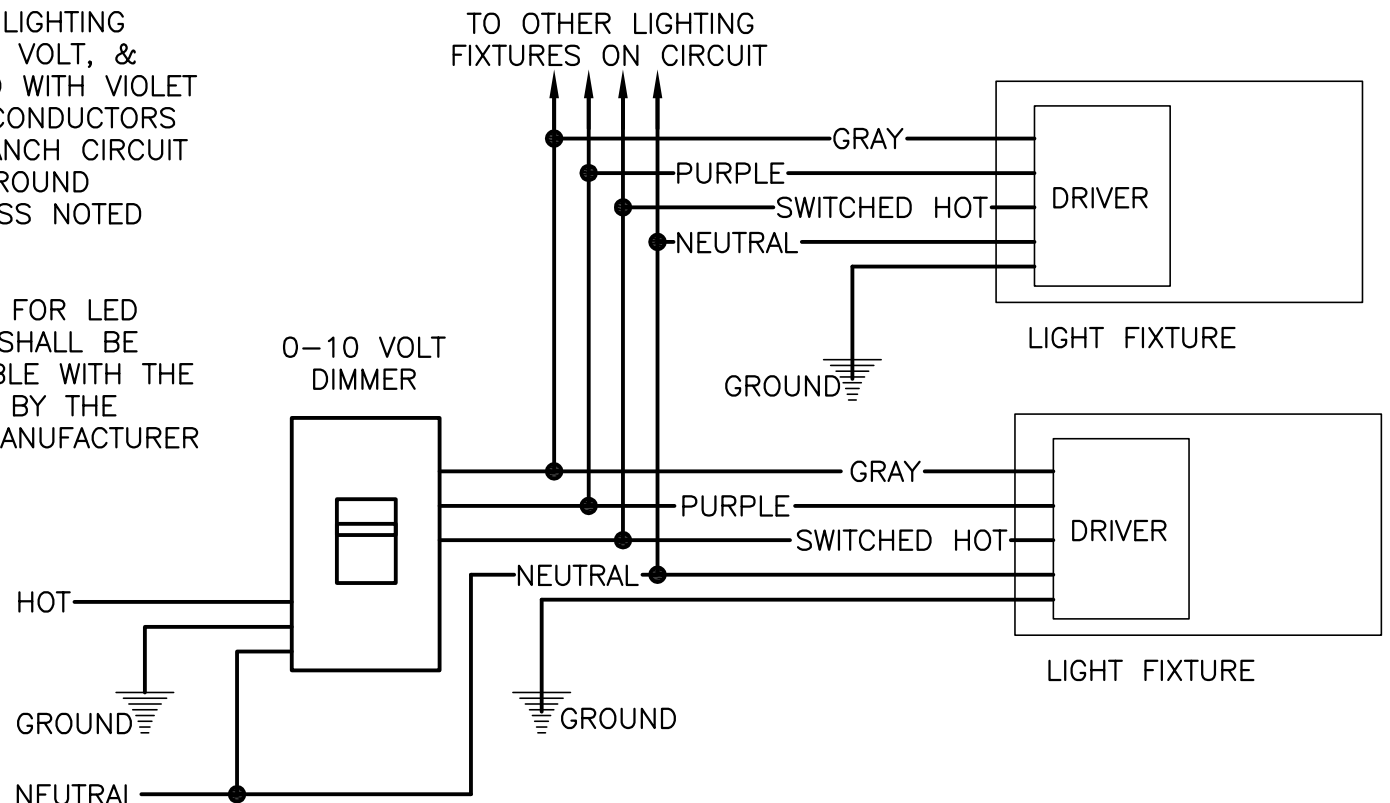
THE HVAC CONTRACTOR, PLUMBING CONTRACTOR, SPRINKLER SYSTEM CONTRACTOR, ELECTRICAL CONTRACTOR AND OTHER CONTRACTORS ARE REQUIRED TO PREPARE A COORDINATION DRAWING SHOWING INSTALLATION OF ALL EQUIPMENT, PIPING, DUCTWORK, CONDUIT, VALVES, ACCESSORIES AND OTHER ITEMS THAT WILL BE INSTALLED ABOVE THE CEILING. IF CONFLICTS (INCLUDING, BUT NOT LIMITED TO, LOCATION, CLEARANCES FOR MAINTENANCE AND/OR REPAIR, CODE REQUIRED CLEARANCES FOR EQUIPMENT, ETC.) ARE IDENTIFIED, THEY SHALL BE BROUGHT TO THE ATTENTION OF THE ARCHITECT AND ENGINEER, AND SHALL BE RESOLVED BEFORE INSTALLATION OF THE CONFLICTING ITEMS. IF THE COORDINATION DRAWING INDICATES CONFLICTS BETWEEN EQUIPMENT OF DIFFERING TRADES, OWNER'S EQUIPMENT, BUILDING ELEMENTS, OR ANY OTHER ITEM, AND THESE CONFLICTS ARE NOT NOTED, IDENTIFIED OR OTHERWISE BROUGHT TO THE ATTENTION OF THE ARCHITECT AND ENGINEER, OR IF THEY ARE IDENTIFIED AND INSTALLED BEFORE BEING RESOLVED, ALL COSTS INVOLVED WITH CORRECTING THE CONFLICTS, TO THE SATISFACTION OF THE ARCHITECT AND ENGINEER, SHALL BE PAID BY THE AFFECTED TRADES. ADDITIONALLY, IF THERE ARE CONFLICTS BETWEEN INSTALLED ITEMS, BUILDING ELEMENTS, ETC., AND THEY ARE READILY APPARENT BY CASUAL OBSERVATION OF THE AREAS IN WHICH THE EQUIPMENT IS TO BE INSTALLED, AND/OR BY REVIEWING EQUIPMENT MANUFACTURER'S INSTALLATION REQUIREMENTS AND RECOMMENDATIONS, ALL COSTS INVOLVED WITH CORRECTING THE CONFLICTS, TO THE SATISFACTION OF THE ARCHITECT AND ENGINEER, SHALL BE PAID BY THE AFFECTED TRADES.



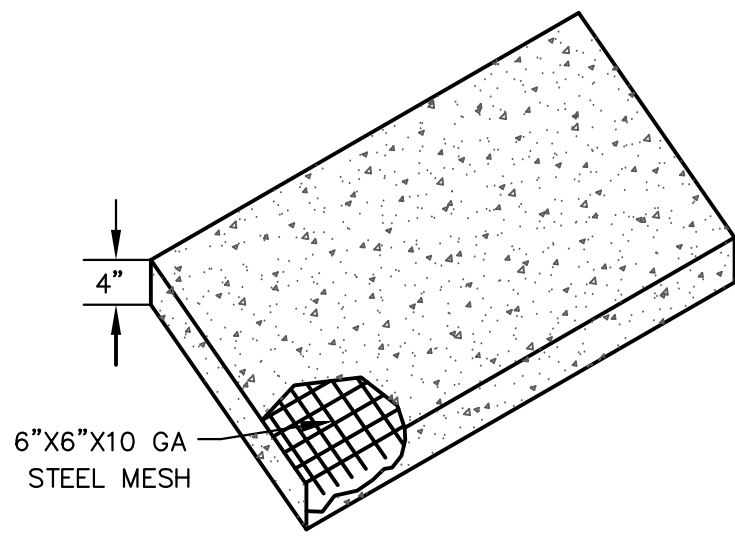
6 ADJACENT ELECTRICAL BOXES IN FIRERATED PARTITIONS  
SCALE: N.T.S.



5 ROOF PIPE SUPPORT  
SCALE: N.T.S.

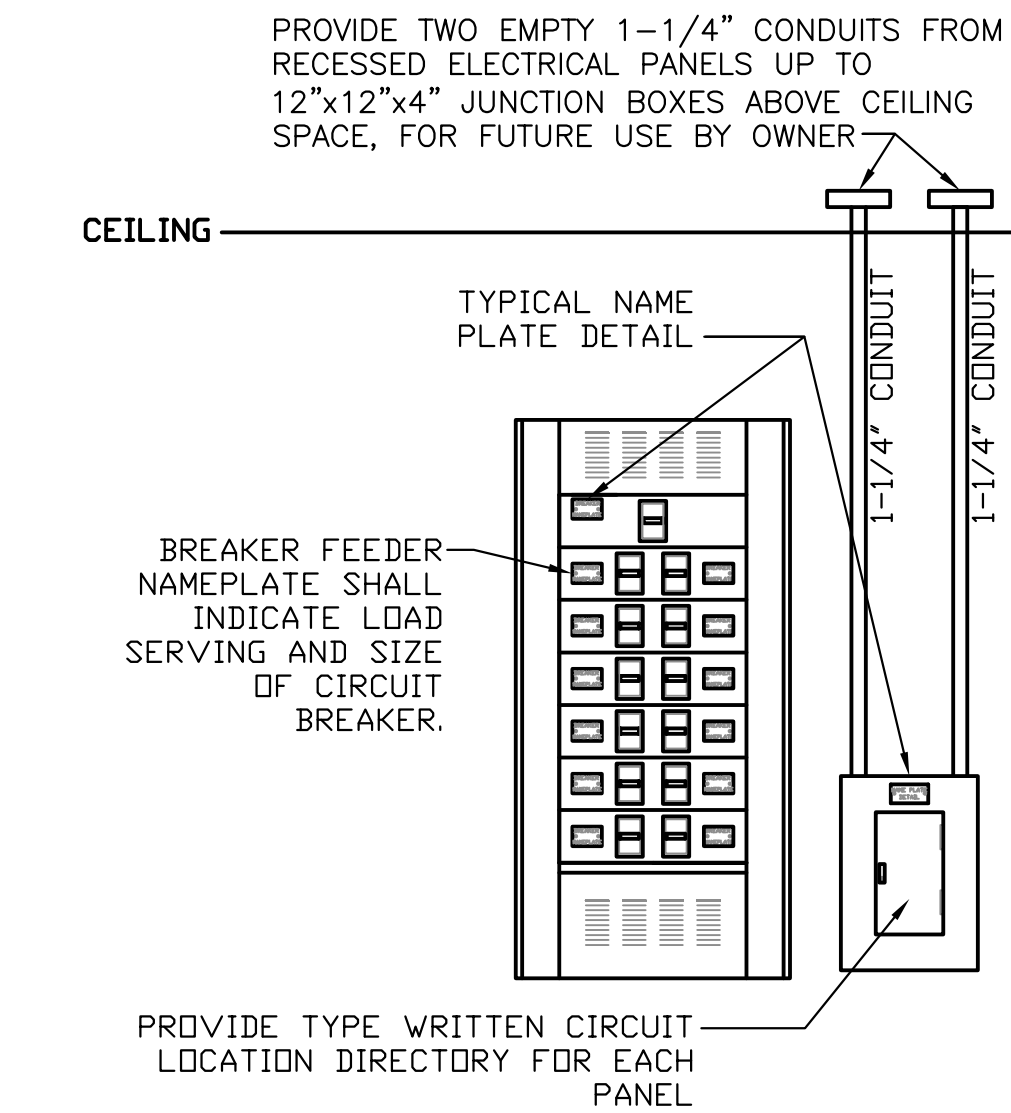
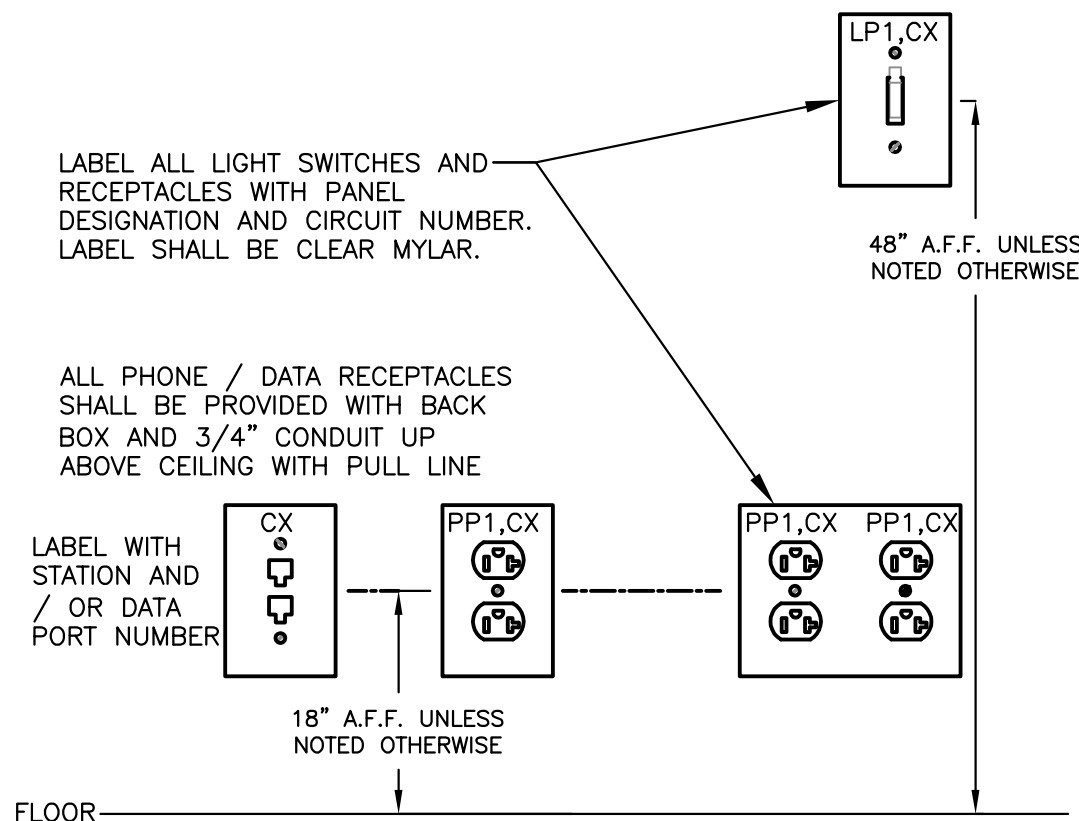


4 0 - 10 VOLT LED DIMMER LIGHTING CIRCUIT SCHEMATIC DIAGRAM  
SCALE: NONE



- NOTES:
- CONCRETE TO BE MINIMUM 3500 PSI AFTER 28 DAYS.
  - PAD TO EXTEND 6" FROM EQUIPMENT IN ALL DIRECTIONS.
  - PROVIDE QUANTITY AND SIZE OF ANCHOR BOLTS REQUIRED BY EQUIPMENT MANUFACTURER.
  - PROVIDE WIRE MESH AS SHOWN THROUGHOUT PAD. LOCATE 2" FROM BOTTOM OF PAD

2 CONCRETE EQUIPMENT PAD  
SCALE: N.T.S.



1 ELECTRICAL PANEL AND DEVICE DETAILS  
NOT TO SCALE

© 2020 SJM ASSOCIATES

M.E.P. ENGINEER

SJM Associates Consulting Engineers

58 Brookside Drive  
West Shokan, New York 12494  
Ph: (845) 657-2072 Fax: (845) 657-2073

187 E. Market Street  
Suite 180  
Rhinebeck NY 12572  
845 876 8202 phone  
845 876 8112 fax

optimus

ARCHITECTURE

SCALE AS NOTED  
# 12/03/20  
DATE 12/03/20  
DRAWN BY: CHIKED. BY: SJM

REVISIONS  
# 12/03/20  
DATE 12/03/20  
ISSUED FOR BID, PERMIT AND CONSTRUCTION

REVISED EXISTING PANEL DP-CN

PROJECT # 2023  
Linear Accelerator Replacement for:  
VASSAR BROTHERS MEDICAL CENTER  
45 READE PLACE  
POUGHKEEPSIE, NEW YORK 12601

DRAWING TITLE  
ELECTRICAL DETAILS, NOTES AND SCHEDULES

DRAWING NUMBER:

E200



DIFFUSER & REGISTER SCHEDULE											
DESIG.	MANUF.	MODEL	TYPE	DUTY	FLOW PATTERN	SIZE	NECK	DAMPER	FINISH	MAT'L	REMARKS
A	TITUS	PMC	PERFORATED FACE	SUPPLY	ADJUSTABLE	24"x24"	SEE DWG	NO	NOTE 10	STEEL	NOTES 1, 2
B	TITUS	355FL	RCT GRILLE	RTN/EXH	N/A	SEE DWG'S	NONE	NO	NOTE 10	ALUMINUM	NOTES 1, 2, 3, 4, 5, 8
C	TITUS	LL1-11-3/4"	LINEAR DIFFUSER	SUPPLY	ONE WAY	4 FEET	SEE DWG	NO	NOTE 10	ALUMINUM	NOTES 1, 2, 3, 6, 7
D	TITUS	LL1-11-3/4"	LINEAR DIFFUSER	SUPPLY	ONE WAY	12 FEET	SEE DWG	NO	NOTE 10	ALUMINUM	NOTES 1, 2, 3, 6, 7
E	TITUS	271FS	RCT GRILLE	SUPPLY	N/A	SEE DWG'S	NONE	NO	NOTE 10	ALUMINUM	NOTES 1, 2, 9
<div><div>NOTES:</div><div><div>1. SEE DRAWINGS FOR SIZES</div><div>2. PROVIDE DAMPER IN BRANCH DUCT TO DIFFUSER</div><div>3. PROVIDE T-BAR CEILING MARGIN</div><div>4. PROVIDE RECTANGULAR TO ROUND ADAPTER AS REQUIRED FOR CONNECTION OF DUCT</div><div>5. PROVIDE DAMPER IN EXHAUST BRANCH DUCTWORK</div><div>6. PROVIDE PLENUM SIZED PER DRAWING WITH ACOUSTICAL LINING</div><div>7. PROVIDE WITH ALL NECESSARY MOUNTING AND SUPPORT ACCESSORIES REQUIRED FOR INSTALLATION IN A LAY-IN CEILING. BORDERS SHALL HAVE MITERED CORNERS, PROVIDE TRIM AS REQUIRED FOR MULTIPLE SECTIONS</div><div>8. FLEXIBLE DUCT CONNECTION</div><div>9. PROVIDE WITH ALL NECESSARY MOUNTING AND SUPPORT ACCESSORIES REQUIRED FOR INSTALLATION IN A SHEETROCK WALL</div><div>10. COLOR TO BE SELECTED ON SUBMITTAL</div></div></div>											

EXHAUST FAN SCHEDULE												
UNIT #	AREA SERVED	MANUF.	MOUNTING	MODEL No.	CFM	EXTERNAL S.P.	SONES	ELEC. VOLT.	MOTOR	DRIVE	LBS.	REMARKS
EF-1	LINAC VAULT	GREENHECK	ROOF	C-103-VG	800	0.75"	7.4	120	1/2 HP	DIRECT	55	
<div>EXHAUST FAN NOTES:</div> <div><div>PROVIDE EXHAUST FANS WITH INDICATED ACCESSORIES:</div><div>1. MANUAL MOTOR STARTER</div><div>2. GRAVITY BACKDRAFT DAMPER (LOW LEAKAGE TIGHT CLOSING)</div><div>3. ECM MOTOR WITH INTEGRAL SPEED CONTROL</div><div>4. ELECTRICAL DISCONNECT SWITCH</div><div>5. FLEX CONNECTION FROM FAN TO DUCT</div><div>6. SPRING &amp; RUBBER VIBRATION ISOLATOR'S WITH HANGING RODS, AND MOUNTING HARDWARE</div></div>												

LINAC VAULT AC-1 SCHEDULE												
PROVIDE ALL LABOR, MATERIALS AND EQUIPMENT NECESSARY TO FURNISH AND INSTALL A COMPLETE AIR-CONDITIONING SYSTEM FOR THE LINAC TREATMENT VAULT, INCLUDING, BUT NOT LIMITED TO, INDOOR, ABOVE CEILING MOUNTED, EVAPORATOR, ROOF MOUNTED OUTDOOR CONDENSING UNIT, ALL INTERCONNECTING REFRIGERANT PIPING, CONDENSATE DRAIN PIPING, CONTROLS, CONTROL WIRING, POWER WIRING, NECESSARY SUPPORTS AND ACCESSORIES, ETC. THE WORK SHALL PROVIDE A FULLY FUNCTIONING AIR-CONDITIONING SYSTEM.												
AC-1 SHALL BE ABOVE-AIR TECHNOLOGIES "PRECISION COOL" MODEL HK WITH A ROOF MOUNTED DUAL CIRCUIT CONDENSING UNIT, OR AN EQUIVALENT PRODUCT OF ANOTHER MANUFACTURER												
NOMINAL SYSTEM COOLING CAPACITY: 6 TONS COOLING CAPACITIES AT 72F DB/60 F WB AT EVAPORATOR EAT: TOTAL COOLING CAPACITY: 75.5 MBH SENSIBLE COOLING CAPACITY: 67.0 MBH AIRFLOW: 2,400 CFM ESP: 1.25" WC												
SYSTEM SHALL BE PROVIDED WITH THE FOLLOWING:												
INDOOR UNIT												
<div>1. SAME SIDE SUPPLY AND RETURN AIR</div> <div>2. ELECTRIC REHEAT (11 KW), SCR CONTROL</div> <div>3. MC-2000 CONTROLLER WITH BACNET INTERFACE (CONFIRM WITH VBMC IT DEPT)</div> <div>4. CONDENSATE PUMP</div> <div>5. SMOKE DETECTOR</div> <div>6. WATER LEAK DETECTOR</div> <div>7. SPRING HANGING ISOLATORS</div> <div>8. DISCONNECT SWITCH</div> <div>9. MERV 8 FILTER WITH FILTER RACK</div> <div>10. 208/3/60, 41.6A MCA</div>												
OUTDOOR UNIT												
<div>1. DUAL SCROLL COMPRESSORS, DUAL REFRIGERATION CIRCUIT CONDENSING UNIT (ROOF MOUNTED)</div> <div>2. HOT GAS BYPASS ON EACH CIRCUIT</div> <div>3. SUCTION LINE ACCUMULATORS</div> <div>4. MINUS 20F LOW AMBIENT OPERATION</div> <div>5. DISCONNECT SWITCH</div> <div>6. 208/3/60, 38.4A MCA</div>												
INSTALLATION												
A. GENERAL: INSTALL AIR-CONDITIONING SYSTEM IN ACCORDANCE WITH MANUFACTURER'S INSTALLATION INSTRUCTIONS. INSTALL UNITS PLUMB AND LEVEL, FIRMLY ANCHORED IN LOCATIONS INDICATED, AND MAINTAIN MANUFACTURER'S RECOMMENDED CLEARANCES.												
B. INSTALL INDOOR AND OUTDOOR UNIT IN ACCORDANCE WITH MANUFACTURER'S INSTRUCTIONS, REQUIREMENTS AND RECOMMENDATIONS.												
C. FURNISH AND INSTALL CONDENSATE DRAIN PIPING (INCLUDING CONDENSATE PUMP AND DISCHARGE PIPING) FROM INDOOR UNIT AS REQUIRED BY THE MANUFACTURER AND SHOWN ON THE DRAWINGS.												
D. INSTALL ALL REFRIGERANT PIPING, INSULATION, AND RELATED ACCESSORIES, IN ACCORDANCE WITH MANUFACTURER'S INSTRUCTIONS AND RECOMMENDATIONS. PURGE REFRIGERANT PIPING IN ACCORDANCE WITH MANUFACTURER'S REQUIREMENTS.												
E. PROTECT REFRIGERANT PIPING DURING CONSTRUCTION AGAINST ENTRANCE OF FOREIGN MATTER, DIRT AND MOISTURE; HAVE OPEN ENDS OF PIPING AND CONNECTIONS TO COMPRESSORS, CONDENSERS, EVAPORATORS AND OTHER EQUIPMENT TIGHTLY CAPPED UNTIL ASSEMBLY.												
F. INSULATE REFRIGERANT PIPING IN ACCORDANCE WITH MANUFACTURER'S RECOMMENDATIONS. PROVIDE WEATHER RESISTANT JACKET TO ALL INSULATION EXPOSED TO OUTDOOR CONDITIONS.												
G. INSTALL ALL ITEMS SHIPPED LOOSE BY THE MANUFACTURER FOR FIELD INSTALLATION.												
H. PROVIDE R410A REFRIGERANT AS NECESSARY TO FULLY CHARGE SYSTEMS IN ACCORDANCE WITH MANUFACTURER'S REQUIREMENTS.												
I. PROVIDE ALL REQUIRED CONTROL AND POWER WIRING REQUIRED TO FURNISH AND INSTALL A COMPLETELY FUNCTIONAL SYSTEM IN ACCORDANCE WITH THE MANUFACTURER'S INSTALLATION INSTRUCTIONS.												
J. ELECTRICAL: INSTALL AND CONNECT ELECTRICAL DEVICES SUPPLIED BY MANUFACTURER BUT NOT SPECIFIED TO BE FACTORY MOUNTED.												
K. FURNISH COPY OF MANUFACTURER'S ELECTRICAL CONNECTION DIAGRAM SUBMITTAL TO ELECTRICAL CONTRACTOR.												
L. FURNISH AND INSTALL POWER AND CONTROL CONDUITS AND CONDUCTORS ALONG WITH RELATED INTERCONNECTIONS IN ACCORDANCE WITH HVAC UNITS MANUFACTURER'S REQUIREMENTS AND RECOMMENDATIONS.												
M. FIELD QUALITY CONTROL: START UP SYSTEM IN ACCORDANCE WITH MANUFACTURER'S START UP INSTRUCTIONS. TEST EQUIPEMNT AS WELL AS CONTROLS AND DEMONSTRATE COMPLIANCE WITH REQUIREMENTS.												

PROJECT Linear Accelerator Replacement for: VASSAR BROTHERS MEDICAL CENTER 45 READE PLACE POUGHKEEPSIE, NEW YORK 12601	PROJECT #: 2023	SCALE AS NOTED	#	DATE	12/03/20	DRAWN BY: SJM	CHKD BY: SJM
				REVISIONS			
				DATE	12/03/20		
				ISSUED FOR BID, PERMIT AND CONSTRUCTION			
DRAWING TITLE HVAC SCHEDULES				1	12/31/20		REVISED AC-1 VOLTAGE

DRAWING NUMBER:

M202

M.E.P. ENGINEER

SJM Associates Consulting Engineers

58 Brookside Drive  
West Shokan, New York 12494  
Ph: (845) 657-2072 Fax: (845) 657-2073

187 E. Market Street  
Suite 180  
Rhinebeck NY 12572

845 876 8202 phone  
845 876 8112 fax

optimus

ARCHITECTURE