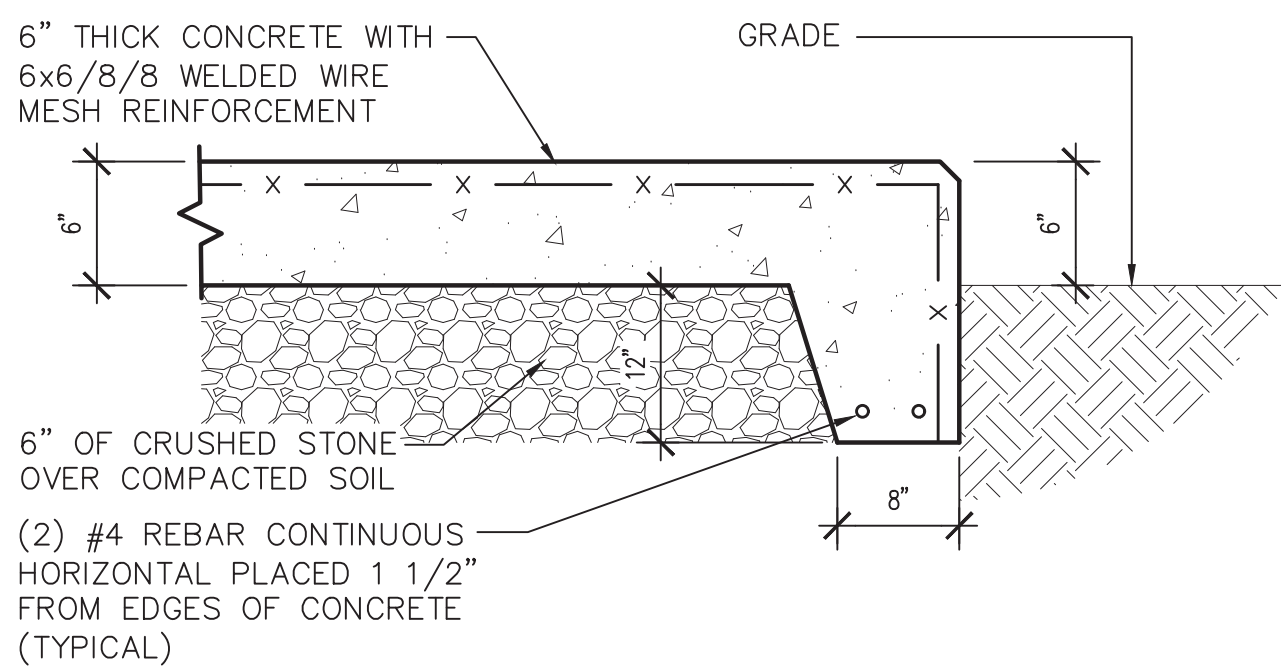
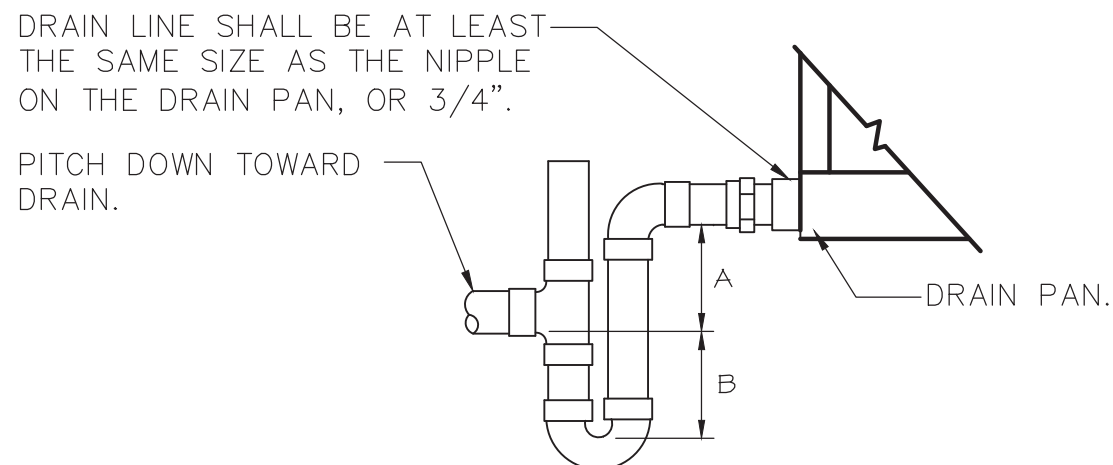


- 1.) LIQUID AND SUCTION LINES MAY BE ROUTED TOGETHER FOR CONVENIENCE, BUT MUST BE COMPLETELY INSULATED FROM EACH OTHER. DO NOT SOLDER LIQUID AND SUCTION LINES TOGETHER. DO NOT ALLOW METAL TO METAL CONTACT.
- 2.) LINES SHOULD BE INSTALLED WITH AS FEW BENDS AS POSSIBLE, ALLOWING SERVICE ACCESS TO THE INDOOR COIL.
- 3.) USE LONG RADIUS ELBOWS WHEREVER POSSIBLE, EXCEPT IN OIL RETURN TRAPS, WHERE SHORT RADIUS ELBOWS SHOULD BE USED.
- 4.) SLOPE HORIZONTAL SUCTION LINES 1 INCH EVERY 20 FEET TOWARD THE OUTDOOR UNIT.

SCALE: NONE



SCALE: NONE



SCALE: NONE

SYMBOL	ABBREVIATION	DESCRIPTION
—	AD	ACCESS DOOR
—	AFF	ABOVE FINISHED FLOOR
—	AHC	ABOVE HUNG CEILING
—	AP	ACCESS PANEL
—	BDD	BACKDRAFT DAMPER
—	BMS	BUILDING MANAGEMENT SYSTEM
—	BHP	BRAKE HORSEPOWER
—	BTU	BRITISH THERMAL UNIT
—	CFM	CUBIC FEET PER MINUTE
—	DDC	DIRECT DIGITAL CONTROL
—	DIA. OR $\phi$	DIAMETER
—	EA	EXHAUST AIR
—	EL	ELEVATION
—	ER	EXHAUST REGISTER
—	ESP	EXTERNAL STATIC PRESSURE
—	FPM	FEET PER MINUTE
—	FPS	FEET PER SECOND
—	HP	HORSE POWER
—	KX	KITCHEN EXHAUST
—	LAT	LEAVING AIR TEMPERATURE
—	LF	LINEAR FEET
—	MBH	1000 BRITISH THERMAL UNITS PER HOUR
—	PSI	POUNDS PER SQUARE INCH
—	SP	STATIC PRESSURE
—	TSP	TOTAL STATIC PRESSURE
—	TYP.	TYPICAL
—	WMS	WIRE MESH SCREEN
— CD —	—	CONDENSATE DRAIN
— CW —	—	COLD WATER MAKE-UP
— D —	—	DRAIN
————	EX.	EXISTING TO REMAIN
-----	REL.	REMOVE AND RELOCATE
————	NEW	NEW WORK
-----	DEM.	EXISTING TO BE REMOVED
	—	SMOKE DETECTOR
	—	DOOR UNDER CUT
	—	AIR INTO REGISTER
	—	SPEED CONTROLLER
	—	POINT OF CONNECTION DISCONNECTION
	ER	EXHAUST REGISTER
	—	SUPPLY AIR/OUTSIDE AIR INTAKE DUCT UP
	—	SUPPLY AIR/OUTSIDE AIR INTAKE DUCT DOWN
	—	RETURN/EXHAUST/SPILL AIR DUCT UP
	—	RETURN/EXHAUST/SPILL AIR DUCT DOWN
	—	ALUMINUM DUCT
	AL	ACOUSTIC LINING
	FD/AD	FIRE DAMPER W/ ACCESS DOOR
	VD	VOLUME DAMPER
	—	DUCT SIZE — 1ST FIGURE IS SIDE SHOWN
	FC	FLEXIBLE CONNECTION
	—	SECTION CALLOUT

1. CONTRACT DRAWINGS AS FAR AS THEY RELATE TO THE GENERAL ARRANGEMENT AND LOCATION OF EQUIPMENT, SHEET METAL, AND PIPING, SHALL BE UNDERSTOOD AS DIAGRAMMATIC. ANY CHANGES TO EQUIPMENT, SHEET METAL, AND PIPING LOCATIONS NECESSARY TO AVOID INTERFERENCE WITH OTHER TRADES SHALL BE MADE AT NO EXTRA COST, AND MUST BE APPROVED BY THE ENGINEER.
2. ALL MOTOR STARTERS AND DISCONNECT SWITCHES FOR HVAC EQUIPMENT SHALL BE FURNISHED BY THE MECHANICAL CONTRACTOR AND INSTALLED BY THE ELECTRICAL CONTRACTOR, UNLESS OTHERWISE NOTED. DISCONNECT SWITCHES FURNISHED BY THE MECHANICAL CONTRACTOR FOR HVAC EQUIPMENT SHALL BE HEAVY DUTY TYPE.
3. THE MECHANICAL CONTRACTOR SHALL FIELD VERIFY ALL EXISTING CONDITIONS PRIOR TO THE BEGINNING OF WORK, AND SHALL COORDINATE ALL WORK WITH OTHER TRADES.
4. DUCT DIMENSIONS SHOWN ON MECHANICAL DRAWINGS REFER TO INSIDE CLEAR DUCT DIMENSIONS. WHERE DUCTWORK IS LINED, THE MECHANICAL CONTRACTOR SHALL INCREASE THE SIZE OF DUCT TO COMPENSATE FOR LINING.
5. THE MECHANICAL CONTRACTOR SHALL SUBMIT FOR REVIEW A COMPOSITE SHOP DRAWING, FULLY COORDINATED WITH ALL OTHER TRADES, INDICATING DUCTWORK, PLUMBING AND SMOKE DETECTORS, LIGHTS, CONDUITS, SMOKE DETECTORS, ETC.
6. ALL WORK SHALL COMPLY WITH STATE BUILDING CODE, LOCAL BUILDING CODE, AND ENERGY CODE REQUIREMENTS. IN CASE OF CONFLICT BETWEEN THE CONTRACT DOCUMENTS AND A GOVERNING CODE OR ORDINANCE, THE MORE STRINGENT STANDARD SHALL APPLY.
7. THE OWNER'S PERMANENT HVAC NEW EQUIPMENT SHALL NOT BE USED BY ANY CONTRACTOR DURING CONSTRUCTION FOR TEMPORARY HEATING, COOLING, OR VENTILATION. IF TEMPORARY HEATING, COOLING, OR VENTILATION IS REQUIRED AT ANY POINT DURING CONSTRUCTION, THE CONTRACTOR SHALL PROVIDE TEMPORARY HEATING, COOLING, OR VENTILATION EQUIPMENT, DUCTWORK, CONTROLS, AND POWER AT HIS OWN EXPENSE.
8. THE CONTRACTOR SHALL BE RESPONSIBLE FOR PROVIDING TEMPORARY VENTILATION AND EXHAUST AIR WHEN WELDING OR SOLDERING OPERATIONS ARE PERFORMED, AS REQUIRED BY OSHA.
9. THE MECHANICAL CONTRACTOR SHALL BE RESPONSIBLE FOR OBTAINING AND PAYING FOR ALL NECESSARY PERMITS AND FOR PAYING RELATED FEES.
10. THE MECHANICAL CONTRACTOR SHALL PROVIDE ALL CUTTING, PATCHING, CORE DRILLING, ACCESS PANELS, PAINTING, AND FINAL RESTORATION REQUIRED TO FACILITATE THE INSTALLATION OF HVAC DUCTWORK, CONTROL CONDUITS, AND PIPING, INCLUDING ABOVE CEILINGS AND IN SHAFTS THAT WILL NOT BE REPLACED OR OPENED UNDER ANY OTHER SCOPE OF WORK RELATED TO THIS PROJECT. CONTRACTOR TO REMOVE AND REPLACE CEILINGS, AND OPEN AND PATCH SHAFTS AND WALLS, AS REQUIRED TO EXECUTE THE MECHANICAL WORK.

1. ELECTRIC BASEBOARD HEATER EH-1: SHALL BE MARKEL MODEL E2906-036C, 36"LONG X 6"HIGH X 2-1/2"DEEP, 600 WATTS, 2040 BTU/H, 120V/1 $\phi$ /60Hz, 5 AMPS, STAINLESS STEEL ELEMENT, ALUMINUM FINS, FACTORY PAINTED WHITE. FURNISH AND INSTALL THE FOLLOWING FIELD-INSTALLED OPTIONS: THERMOSTAT & DISCONNECT SWITCH.

INDOOR UNIT DESIGNATION	AC-A	
MANUFACTURER	DAIKIN	
MODEL	CTXS07LVJU	
TYPE	WALL MOUNTED	
COOLING CAPACITY (TOTAL)(MBH)	7.0	
HEATING CAPACITY (MBH)	8.75	
REFRIGERANT TYPE	R410A	
LIQUID LINE (INCHES)	1/4	
HOT GAS LINE (INCHES)	3/8	
CONDENSATE LINE (INCHES)	5/8	
CFM (LOW/MED/HIGH)	194/264/332	
VOLTS/ø/Hz	208/1/60	
MCA (AMPS)	.11	

1. FIELD SUPPLIED LOCAL DISCONNECT SWITCH AT EACH INDOOR UNIT SHALL BE FURNISHED BY THE MECHANICAL CONTRACTOR & INSTALLED BY THE ELECTRICAL CONTRACTOR.
2. UNIT SHALL INCLUDE INTERNAL CONDENSATE PUMP.
3. REMOTE DETECTION UNIT - TO BE FIELD INSTALLED IN THE INDOOR AC UNIT CASSETTE.
4. ·CONNECTOR AND CONNECTOR PROTECTOR.
5. ·DETECTOR INSTALLATION KIT.
6. ·ALARM CONTACT ARRANGED TO SHUT DOWN AC UNIT UPON PUMP FAILURE.

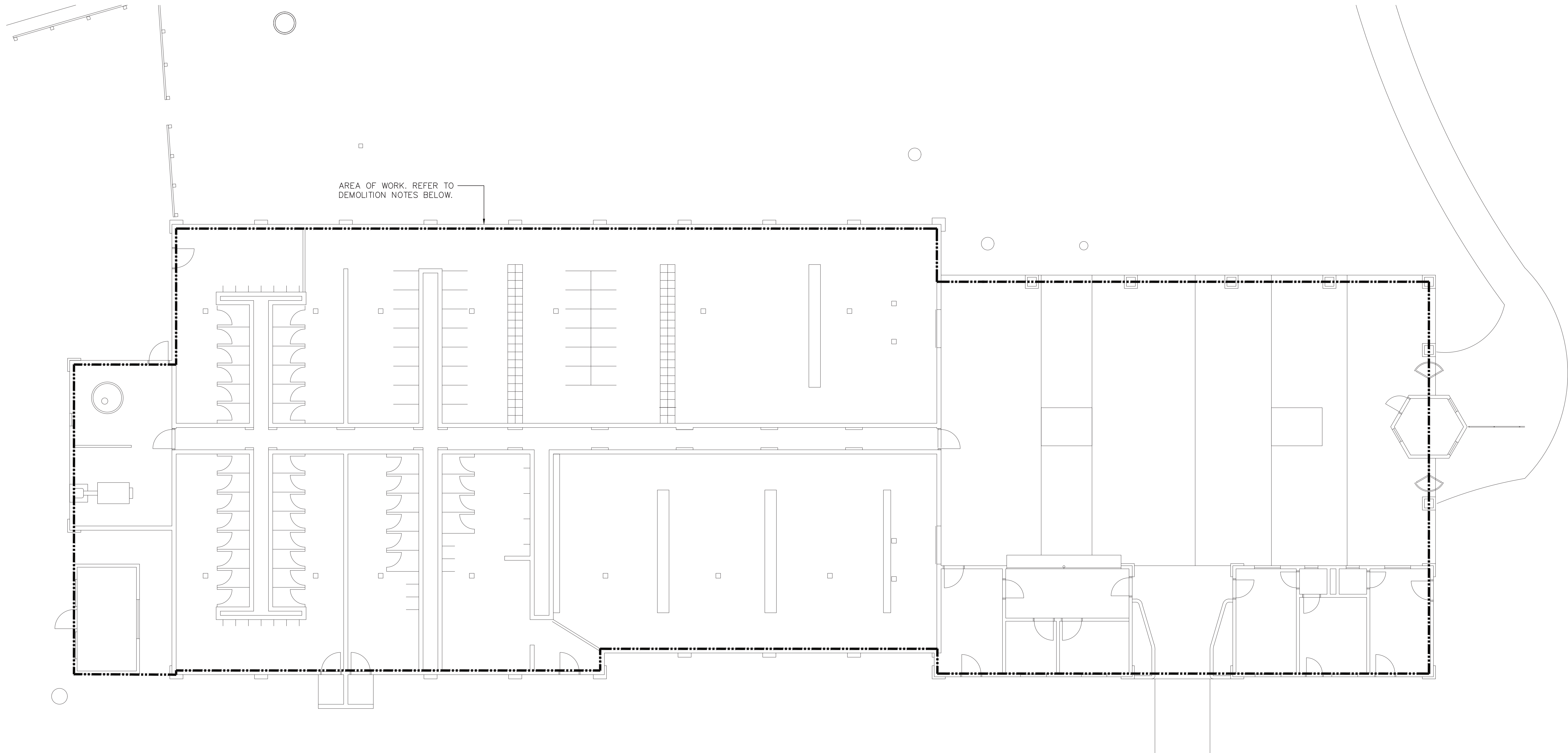
MULTI-ZONE AC SYSTEM - OUTDOOR CONDENSING UNIT SCHEDULE			
OUTDOOR UNIT DESIGNATION	ACC-A		
LOCATION	GRADE		
MANUFACTURER	DAIKIN		
MODEL	3MXS24NMVJU		
TYPE	HEAT PUMP		
REFRIGERANT TYPE	R410A		
NOMINAL COOLING / HEATING CAPACITY (MBH)	24/24		
LIQUID LINE (INCHES)	1/4 (x3)		
HOT GAS LINE (INCHES)	3/8 (x3)		
VOLTS/ø/Hz	208/1/60		
MCA/MOCP	18.7/20		
SEER	14-18		
WEIGHT (LBS.)	137		
HEIGHT x WIDTH x LENGTH (IN)	29x34x12		

OUTDOOR UNIT DESIGNATION	ACC-A		
INDOOR UNITS SERVED	AC-A (LIFEGUARD)		
	AC-A (FIRST AID)		
	AC-A (POLICE)		

1. OUTDOOR CONDENSERS SERVE MULTIPLE INDOOR UNITS. REFER TO SCHEDULE FOR INDOOR/OUTDOOR UNIT CONFIGURATIONS. REFER TO MANUFACTURER'S INSTALLATION REQUIREMENTS FOR PIPING DETAILS.
2. PROVIDE THE FOLLOWING OPTIONS FOR EACH UNIT:
  - 0\* LOW AMBIENT CONTROLS.
  - 7-DAY PROGRAMMABLE WIRED SYSTEM CONTROLLER WITH ALARM OUTPUT.
2. FIELD SUPPLIED WEATHERPROOF LOCAL DISCONNECT SWITCH AT EACH OUTDOOR UNIT SHALL BE FURNISHED BY THE MECHANICAL CONTRACTOR & INSTALLED BY THE ELECTRICAL CONTRACTOR.
3. SINGLE POINT EXTERNAL POWER CONNECTION FOR EACH INDOOR/OUTDOOR SET OF UNITS SHALL BE AT THE OUTDOOR UNIT. THE ELECTRICAL CONTRACTOR SHALL PROVIDE POWER WIRING FROM THE OUTDOOR UNIT TO THE INDOOR UNIT.
4. THE AUTOMATIC TEMPERATURE CONTROLS CONTRACTOR SHALL PROVIDE CONTROL WIRING BETWEEN THE OUTDOOR UNIT AND INDOOR UNIT.

<div><div><div>OLA</div><div>CONSULTING ENGINEERS</div></div><div>OLA Consulting Engineers 50 Broadway, Hawthorne, NY 10532 914.747.2800  8 West 38th Street, Suite 501 New York, NY 10018 646.849.4110  olace.com</div></div>				<div><div>STATE OF NEW YORK</div><div>STEVEN ABBATISIA</div><div>077237</div><div>PROFESSIONAL ENGINEER</div></div>			
REVISION NUMBER	DATE	MADE BY	APP'D BY	REVISION			
RECORD DRAWING CERTIFICATION							
<div><input type="checkbox"/> AS BUILT – CHANGES AS NOTED</div> <div><input type="checkbox"/> AS BUILT – NO CHANGES</div>							
CONTRACTOR				PROJECT COORDINATOR			
NAME _____				NAME _____			
SIGNATURE _____				SIGNATURE _____			
TITLE _____ DATE _____				TITLE _____ DATE _____			
WESTCHESTER COUNTY, NEW YORK DEPARTMENT OF PUBLIC WORKS AND TRANSPORTATION DIVISION OF ENGINEERING							
				CONTRACT NUMBER 15-553		SHEET NUMBER M-001	
				SHEET NO. 41 OF 53			
NEW BATHHOUSE FACILITY CROTON POINT PARK CROTON-ON-HUDSON, NY				SCALE: AS NOTED DATE: 6/18/21			
MECHANICAL SYMBOLS, ABBREV, NOTES & SCHEDULES				DPW FILE NO. 2-02-M-85-0		REV. NO. 0	





DEMOLITION NOTES:

- 1.) ALL EXISTING MECHANICAL EQUIPMENT AND ASSOCIATED ACCESSORIES, DUCTWORK, PIPING, POWER, SPECIALTIES, CONTROLS AND WIRING COMPLETE SHALL BE DEMOLISHED UNLESS OTHERWISE NOTED (UON) EXISTING TO REMAIN (EX.).
- 2.) MECHANICAL CONTRACTOR SHALL VERIFY EXTENT OF DEMOLITION WORK IN THE FIELD PRIOR TO BID AND SHALL INCLUDE ALL LABOR AND MATERIALS IN BASE BID IN ORDER TO ACCOMMODATE THE NEW CONSTRUCTION.
- 3.) ASBESTOS ABETMENT WORK TO BE DONE BY OTHERS. COORDINATE WITH THE ASBESTOS ABATEMENT CONTRACTOR FOR WORK RELATED TO MECHANICAL ITEMS. REFER TO THE ASBESTOS ABATEMENT PLANS.





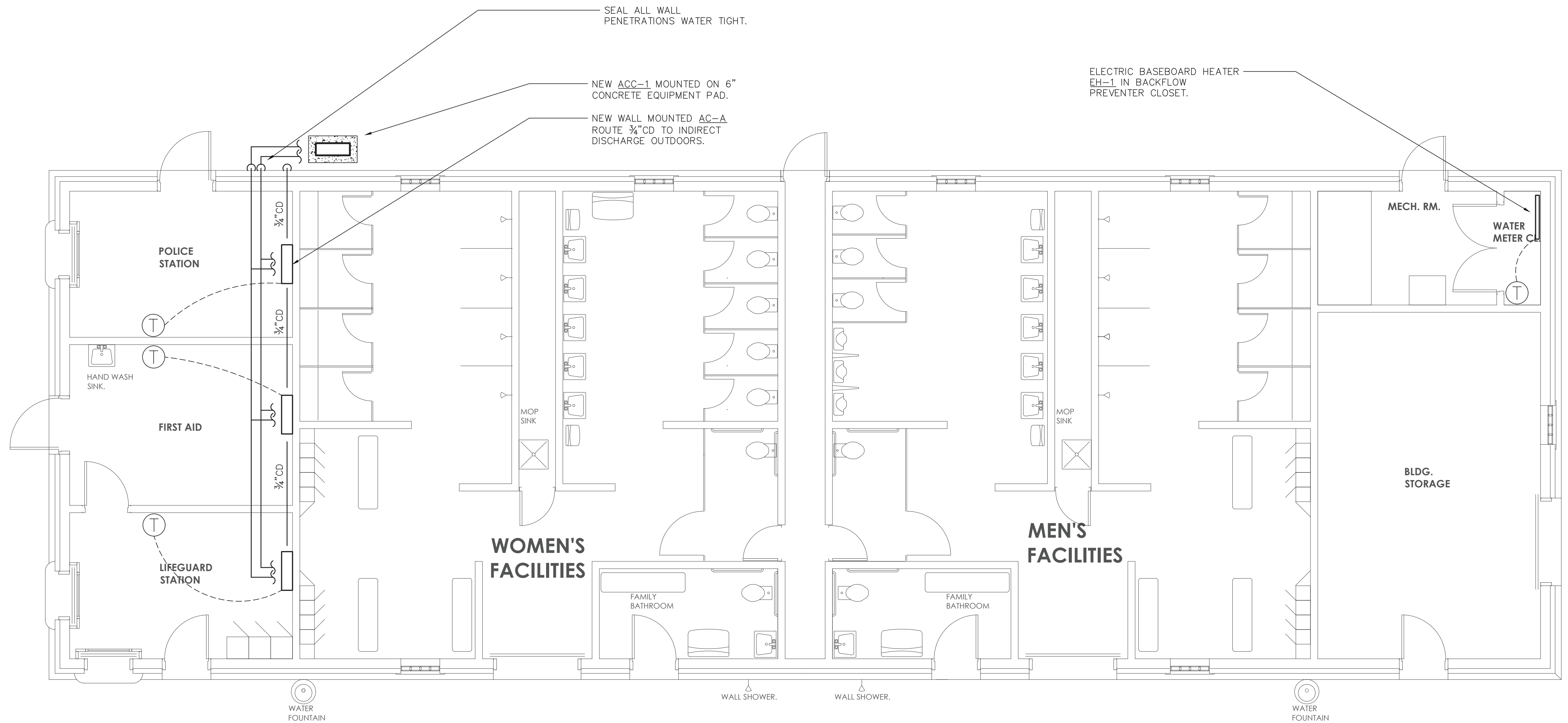
1 BATH HOUSE MECHANICAL DEMOLITION PLAN  
SCALE: 1/8" = 1'-0"

**LEGAL NOTICE:**  
ALTERATIONS BY ANY PERSON, IN ANY WAY, OF ANY ITEM CONTAINED ON THIS DOCUMENT, UNLESS ACTING UNDER DIRECTION OF THE LICENSED ARCHITECT WHOSE PROFESSIONAL SEAL IS AFFIXED HERETO, IS A VIOLATION OF TITLE VII, SECT. 69.5 (B) OF NEW YORK STATE LAW.



WRITTEN DIMENSIONS ON THIS DRAWING SHALL HAVE PRECEDENCE OVER SCALED DIMENSIONS AND CONDITIONS ON THE JOB. THIS OFFICE MUST BE NOTIFIED OF ANY VARIATIONS FROM DIMENSIONS AND CONDITIONS SHOWN BY THESE DRAWINGS. SHOP DETAILS MUST BE SUBMITTED TO THIS OFFICE FOR APPROVAL BEFORE PROCEEDING WITH FABRICATION.

IN CHARGE OF: SA  
CHECKED BY: RS  
MADE BY: CD

 <b>OLA Consulting Engineers</b> 60 Broadway, Hawthorne, NY 10532 914.747.2800 8 West 38th Street, Suite 501 New York, NY 10018 646.849.4110 olace.com					
REVISION NUMBER	DATE	MADE BY	APP'D BY	REVISION	
RECORD DRAWING CERTIFICATION					
<input type="checkbox"/> AS BUILT – CHANGES AS NOTED <input type="checkbox"/> AS BUILT – NO CHANGES					
CONTRACTOR			PROJECT COORDINATOR		
NAME SIGNATURE TITLE			NAME SIGNATURE TITLE		
DATE			DATE		
WESTCHESTER COUNTY, NEW YORK DEPARTMENT OF PUBLIC WORKS AND TRANSPORTATION DIVISION OF ENGINEERING				CONTRACT NUMBER 15-553	SHEET NUMBER <b>M-101</b>
NEW BATHHOUSE FACILITY CROTON POINT PARK CROTON-ON-HUDSON, NY MECHANICAL DEMOLITION PLAN				SCALE: AS NOTED DATE: 6/18/21 DPW FILE NO. 2-02-M-86-0	REV. NO. 0



 **1 BATH HOUSE MECHANICAL NEW WORK PLAN**  
SCALE: 1/4" = 1'-0"

 <b>OLA Consulting Engineers</b> 60 Broadway, Hawthorne, NY 10532 914.747.2800 8 West 38th Street, Suite 501 New York, NY 10018 646.848.4110 olace.com				
REVISION NUMBER	DATE	MADE BY	APP'D BY	REVISION
RECORD DRAWING CERTIFICATION				
<input type="checkbox"/> AS BUILT - CHANGES AS NOTED <input type="checkbox"/> AS BUILT - NO CHANGES				
CONTRACTOR		PROJECT COORDINATOR		
NAME SIGNATURE TITLE	DATE	NAME SIGNATURE TITLE	DATE	
WESTCHESTER COUNTY, NEW YORK DEPARTMENT OF PUBLIC WORKS AND TRANSPORTATION DIVISION OF ENGINEERING		SCALE: AS NOTED DATE: 6/18/21		
NEW BATHHOUSE FACILITY CROTON POINT PARK CROTON-ON-HUDSON, NY MECHANICAL NEW WORK PLAN		CONTRACT NUMBER 15-553 SHEET NO. 43 OF 53		REV. NO. 0

IN CHARGE OF: SA  
CHECKED BY: RS  
MADE BY: CD

**LEGAL NOTICE:**  
ALTERATIONS BY ANY PERSON, IN ANY WAY, OF ANY ITEM CONTAINED ON THIS DOCUMENT, UNLESS ACTING UNDER DIRECTION OF THE LICENSED ARCHITECT WHOSE PROFESSIONAL SEAL IS AFFIXED HERETO, IS A VIOLATION OF TITLE VII, SECT. 69.5 (B) OF NEW YORK STATE LAW.  
WRITTEN DIMENSIONS ON THIS DRAWING SHALL HAVE PRECEDENCE OVER SCALED DIMENSIONS AND CONDITIONS ON THE JOB. THIS OFFICE MUST BE NOTIFIED OF ANY VARIATIONS FROM DIMENSIONS AND CONDITIONS SHOWN BY THESE DRAWINGS. SHOP DETAILS MUST BE SUBMITTED TO THIS OFFICE FOR APPROVAL BEFORE PROCEEDING WITH FABRICATION.