

DEMOLITION NOTES:

- 1.) ALL EXISTING PLUMBING FIXTURES INCLUDING WATER CLOSETS, URINALS, SHOWERS, SHOWER DRAINS, FLOOR DRAINS, LAVATORIES AND ALL ASSOCIATED ROUGH IN, BRANCH PIPING AND SPECIALTIES SHALL BE DEMOLISHED COMPLETE UNLESS OTHERWISE NOTED (UON).
- 2.) DEMOLISH ALL ABOVEGROUND DOMESTIC HOT AND COLD WATER MAINS, BRANCH PIPING AND SPECIALTIES.
- 3.) DEMOLISH ALL ABOVEGROUND SANITARY WASTE AND VENT MAINS, BRANCH PIPING AND SPECIALTIES. DEMOLISH UNDERGROUND SANITARY WASTE PIPING AS REQUIRED FOR INSTALLATION OF NEW BUILDING. COORDINATE WITH GENERAL CONTRACTOR.
- 4.) DEMOLISH EXISTING COLD WATER SERVICE INTO BUILDING AND ASSOCIATED VALVES AND SPECIALTIES BACK TO SOURCE, STOP AND CAP.
- 5.) PLUMBING CONTRACTOR SHALL VERIFY EXTENT OF DEMOLITION WORK IN THE FIELD PRIOR TO BID AND SHALL INCLUDE ALL LABOR AND MATERIALS IN BASE BID IN ORDER TO ACCOMMODATE THE NEW CONSTRUCTION.





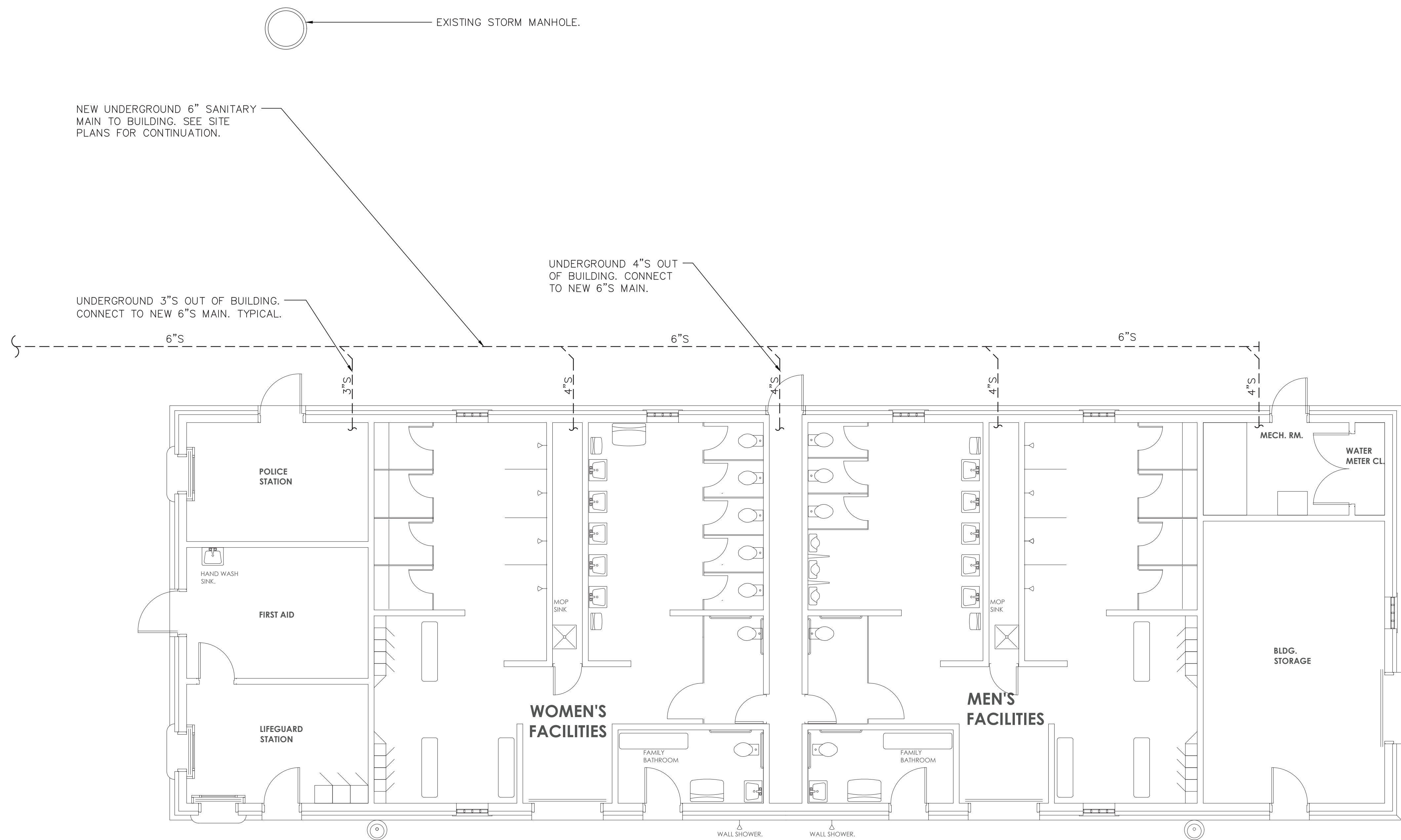
1 BATH HOUSE PLUMBING DEMOLITION PLAN

SCALE: 1/8" = 1'-0"

IN CHARGE OF: SA
CHECKED BY: RS
MADE BY: CD

LEGAL NOTICE:
ALTERATIONS BY ANY PERSON, IN ANY WAY, OF ANY ITEM CONTAINED ON THIS DOCUMENT, UNLESS ACTING UNDER DIRECTION OF THE LICENSED ARCHITECT WHOSE PROFESSIONAL SEAL IS AFFIXED HERETO, IS A VIOLATION OF TITLE VII, SECT. 69.5 (B) OF NEW YORK STATE LAW.
WRITTEN DIMENSIONS ON THIS DRAWING SHALL HAVE PRECEDENCE OVER SCALED DIMENSIONS AND CONDITIONS ON THE JOB. THIS OFFICE MUST BE NOTIFIED OF ANY VARIATIONS FROM DIMENSIONS AND CONDITIONS SHOWN BY THESE DRAWINGS. SHOP DETAILS MUST BE SUBMITTED TO THIS OFFICE FOR APPROVAL BEFORE PROCEEDING WITH FABRICATION.

 OLA Consulting Engineers 60 Broadway, Hawthorne, NY 10532 914.747.2800 8 West 38th Street, Suite 501 New York, NY 10018 646.849.4110 olace.com					
REVISION NUMBER	DATE	MADE BY	APP'D BY	REVISION	
RECORD DRAWING CERTIFICATION					
<input type="checkbox"/> AS BUILT – CHANGES AS NOTED <input type="checkbox"/> AS BUILT – NO CHANGES					
CONTRACTOR			PROJECT COORDINATOR		
NAME SIGNATURE TITLE			NAME SIGNATURE TITLE		
DATE			DATE		
WESTCHESTER COUNTY, NEW YORK DEPARTMENT OF PUBLIC WORKS AND TRANSPORTATION DIVISION OF ENGINEERING				CONTRACT NUMBER 15-553	SHEET NUMBER P-101
NEW BATHHOUSE FACILITY CROTON POINT PARK CROTON-ON-HUDSON, NY PLUMBING DEMOLITION PLAN				SCALE: AS NOTED DATE: 6/18/21 DPW FILE NO. 2-02-P-79-0	
				REV. NO. 0	



1

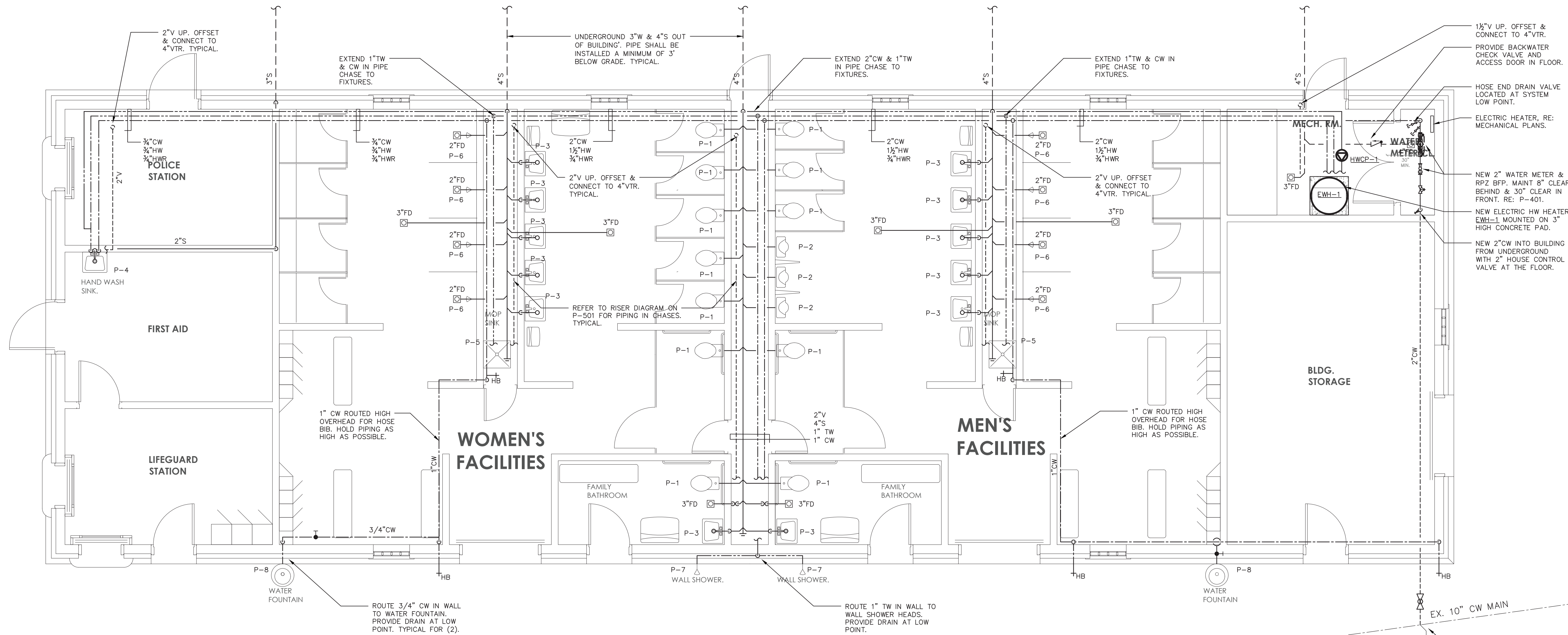
BATH HOUSE PLUMBING SITE SANITARY PLAN

SCALE: 3/16" = 1'-0"

IN CHARGE OF: SA
CHECKED BY: RS
MADE BY: CD

LEGAL NOTICE:
ALTERATIONS BY ANY PERSON, IN ANY WAY, OF ANY ITEM CONTAINED ON THIS DOCUMENT, UNLESS ACTING UNDER DIRECTION OF THE LICENSED ARCHITECT WHOSE PROFESSIONAL SEAL IS AFFIXED HERETO, IS A VIOLATION OF TITLE VII, SECT. 69.5 (B) OF NEW YORK STATE LAW.
WRITTEN DIMENSIONS ON THIS DRAWING SHALL HAVE PRECEDENCE OVER SCALED DIMENSIONS AND CONDITIONS ON THE JOB. THIS OFFICE MUST BE NOTIFIED OF ANY VARIATIONS FROM DIMENSIONS AND CONDITIONS SHOWN BY THESE DRAWINGS. SHOP DETAILS MUST BE SUBMITTED TO THIS OFFICE FOR APPROVAL BEFORE PROCEEDING WITH FABRICATION.

 OLA Consulting Engineers 60 Broadway, Hawthorne, NY 10532 914.747.2800 8 West 38th Street, Suite 501 New York, NY 10018 646.849.4110 olace.com				
REVISION NUMBER	DATE	MADE BY	APP'D BY	REVISION
RECORD DRAWING CERTIFICATION				
<input type="checkbox"/> AS BUILT - CHANGES AS NOTED <input type="checkbox"/> AS BUILT - NO CHANGES				
NAME SIGNATURE TITLE		CONTRACTOR NAME SIGNATURE TITLE		
NAME SIGNATURE TITLE		PROJECT COORDINATOR NAME SIGNATURE TITLE		
WESTCHESTER COUNTY, NEW YORK DEPARTMENT OF PUBLIC WORKS AND TRANSPORTATION DIVISION OF ENGINEERING		CONTRACT NUMBER 15-553		SHEET NUMBER P-200
NEW BATHHOUSE FACILITY CROTON POINT PARK CROTON-ON-HUDSON, NY PLUMBING SITE SANITARY PLAN		SCALE: AS NOTED DATE: 6/18/21 DPW FILE NO. 2-02-P-80-0		REV. NO. 0



EX. 10" CW MAIN

EX. 10" CW MAIN

EX. 10" CW MAIN

NEW 2" CW TAP OFF EXISTING 10" MAIN WITH CORPORATION STOP.





BATH HOUSE PLUMBING NEW WORK PLAN

SCALE: 1/4" = 1'-0"

- NOTES:
1. PROVIDE ADEQUATE DRAIN VALVES SO THAT ALL HOT, COLD, AND TEMPERED WATER PIPING CAN BE DRAINED.
 2. PITCH ALL HOT, COLD, AND TEMPERED WATER PIPING TO ALLOW DRAIN DOWN. COORDINATE DRAIN VALVE LOCATION ACCORDINGLY.

LEGAL NOTICE:
ALTERATIONS BY ANY PERSON, IN ANY WAY, OF ANY ITEM CONTAINED ON THIS DOCUMENT, UNLESS ACTING UNDER DIRECTION OF THE LICENSED ARCHITECT WHOSE PROFESSIONAL SEAL IS AFFIXED HERETO, IS A VIOLATION OF TITLE VII, SECT. 69.5 (B) OF NEW YORK STATE LAW.
WRITTEN DIMENSIONS ON THIS DRAWING SHALL HAVE PRECEDENCE OVER SCALED DIMENSIONS AND CONDITIONS ON THE JOB. THIS OFFICE MUST BE NOTIFIED OF ANY VARIATIONS FROM DIMENSIONS AND CONDITIONS SHOWN BY THESE DRAWINGS. SHOP DETAILS MUST BE SUBMITTED TO THIS OFFICE FOR APPROVAL BEFORE PROCEEDING WITH FABRICATION.

IN CHARGE OF: SA
CHECKED BY: RS
MADE BY: CD

 OLA Consulting Engineers 60 Broadway, Hawthorne, NY 10532 914.747.2800 8 West 38th Street, Suite 501 New York, NY 10018 646.849.4110 olace.com							
REVISION NUMBER	DATE	MADE BY	APP'D BY	REVISION			
RECORD DRAWING CERTIFICATION							
<input type="checkbox"/> AS BUILT - CHANGES AS NOTED <input type="checkbox"/> AS BUILT - NO CHANGES							
CONTRACTOR				PROJECT COORDINATOR			
NAME SIGNATURE TITLE		DATE		NAME SIGNATURE TITLE		DATE	
WESTCHESTER COUNTY, NEW YORK DEPARTMENT OF PUBLIC WORKS AND TRANSPORTATION DIVISION OF ENGINEERING NEW BATHHOUSE FACILITY CROTON POINT PARK CROTON-ON-HUDSON, NY PLUMBING NEW WORK PLAN				CONTRACT NUMBER 15-553 SHEET NO. 37 OF 53 SCALE: AS NOTED DATE: 6/18/21 DPW FILE NO. 2-02-P-81-0 REV. NO. 0			

GENERAL NOTES:

1. ADEQUATE HEAT AND LIGHT SHALL BE PROVIDED IN LOCATIONS WHERE BACKFLOW PREVENTERS ARE TO BE INSTALLED.
2. THE CONTRACTOR SHALL USE ONLY AMERICAN MADE, UL/FM APPROVED VALVES.
3. NO WORK SHALL PROCEED WITHOUT THE WESTCHESTER COUNTY DEPARTMENT OF HEALTH APPROVAL.
4. BACKFLOW PREVENTER ARRANGEMENT SHALL NOT BE ALTERED WITHOUT PRIOR APPROVAL BY WESTCHESTER COUNTY DEPARTMENT OF HEALTH.
5. BACKFLOW PREVENTION SHALL BE PROTECTED FROM THE HIGHEST FLOOD LEVEL.
6. BY-PASSES AROUND BACKFLOW PREVENTER ASSEMBLY SHALL NOT BE PERMITTED.
7. BACKFLOW PREVENTER DEVICE SHALL BE TESTED INITIALLY AND ANNUALLY BY A CERTIFIED AND LICENSED TESTER. AT THE TIME OF INITIAL TESTING PART A AND B OF DOH 1013 FORM MUST BE COMPLETED, TEST RESULTS (FORM DOH 1013) SHALL BE FORWARDED TO WESTCHESTER COUNTY DEPARTMENT OF HEALTH, OWNER AND ENGINEER.
8. THE BACKFLOW PREVENTER SHALL BE REBUILT EVERY FIVE YEARS.
9. ALL PLUMBING WORK SHALL BE PERFORMED BY A LICENSED PLUMBER AND ACCORDING TO DEPARTMENT OF PUBLIC WORKS REGULATIONS.
10. CONTRACTOR SHALL DISINFECT AND PRESSURE TEST BACKFLOW PREVENTER ASSEMBLY BEFORE PLACING IN SERVICE. DISINFECTION SHALL BE IN ACCORDANCE WITH AWWA STANDARD C651-05 WITH THE EXCEPTION OF SECTION 4.4.2.
11. CONTRACTOR SHALL ADEQUATELY SUPPORT ALL PIPING AND DEVICES.
12. WHERE THE DISTANCE BETWEEN THE WATER METER AND THE BACKFLOW PREVENTER IS GREATER THAN 10'-0", ALL EXPOSED PIPING SHALL BE STENCILED "FEED LINE TO BACKFLOW PREVENTER - DO NOT TAP" AT 5'-0" INTERVALS.

EQUIPMENT NOTES:

1. THE 2" DOMESTIC WATER BACKFLOW PREVENTER ASSEMBLY SHALL BE WATTS MODEL LF009M2QT 2" REDUCED PRESSURE ZONE BACKFLOW PREVENTER. ASSEMBLY SHALL BE LEAD FREE SUITABLE FOR PRESSURES UP TO 175 PSI AND TEMPERATURES UP TO 180°F. THE ASSEMBLY SHALL INCLUDE TWO RESILIENT SEATED ISOLATION VALVES, FOUR RESILIENT SEATED TEST COCKS AND AN AIR GAP DRAIN FITTING.
2. PRESSURE REDUCING VALVE (PRV): WATTS LFN223BS WITH ADJUSTABLE PRESSURE RANGE.
3. THE 2" DOMESTIC WATER METER WITH INTEGRAL STRAINER SHALL BE SUBJECT TO THE REVIEW AND APPROVAL OF THE LOCAL WATER UTILITY. FINAL WATER METER AND SIZE, MODEL, AND DIMENSIONS SHALL BE DETERMINED & APPROVED BY THE LOCAL WATER UTILITY. THE PLUMBING CONTRACTOR IS RESPONSIBLE FOR COORDINATION AND INSTALLATION AND ALL RELATED WATER DEPARTMENT FEES.

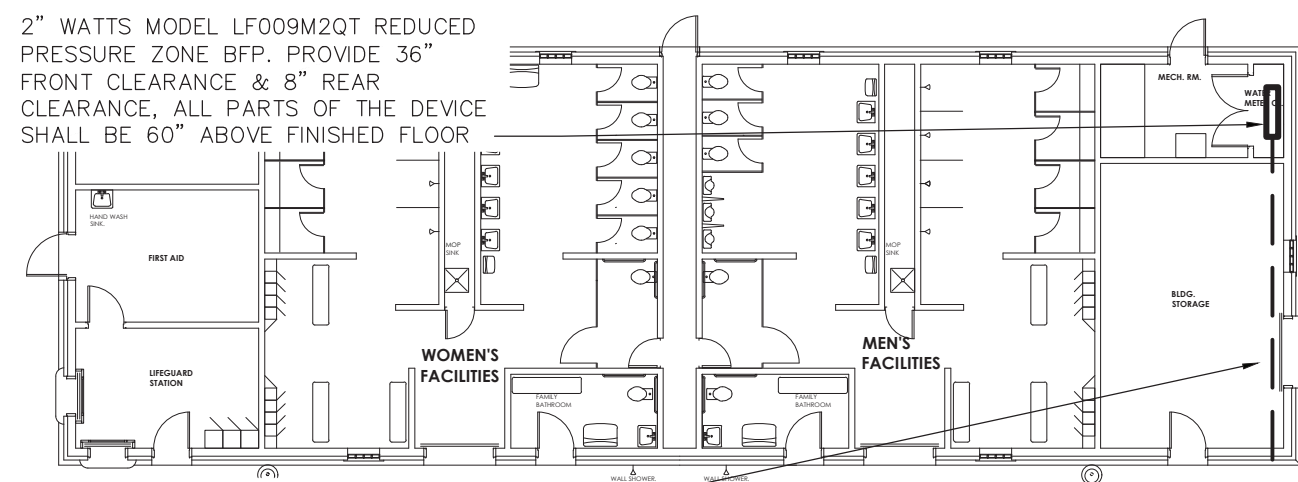
INSTALLATION NOTES:

- A. NO STRAINER IS TO BE USED ON A FIRE LINE WITHOUT INSURANCE UNDERWRITER APPROVAL.
- B. ASSEMBLIES SHOULD BE SPECIFIED AND INSTALLED WITH MANUFACTURER SUPPLIED VALVES.
- C. WATER LINES SHOULD BE THOROUGHLY FLUSHED BEFORE INSTALLATION OF DEVICE TO PREVENT DEBRIS FOULING THE DEVICE CHECK VALVES.
- D. DEVICES MUST BE MOUNTED HORIZONTALLY UNLESS APPROVED FOR VERTICAL INSTALLATION.
- E. ASSEMBLIES SHOULD NOT BE INSTALLED IN AREAS CONTAINING CORROSIVE OR TOXIC GASES WHICH COULD RENDER THE DEVICE INOPERABLE.

NOTE: INSTALLATION SHALL BE IN ACCORDANCE WITH WESTCHESTER COUNTY DEPARTMENT OF HEALTH REQUIREMENTS.

UNAUTHORIZED ALTERATION OR ADDITION TO THIS DOCUMENT IS A DIRECT VIOLATION OF SECTION 7209 (2) OF THE NEW YORK STATE EDUCATION LAW

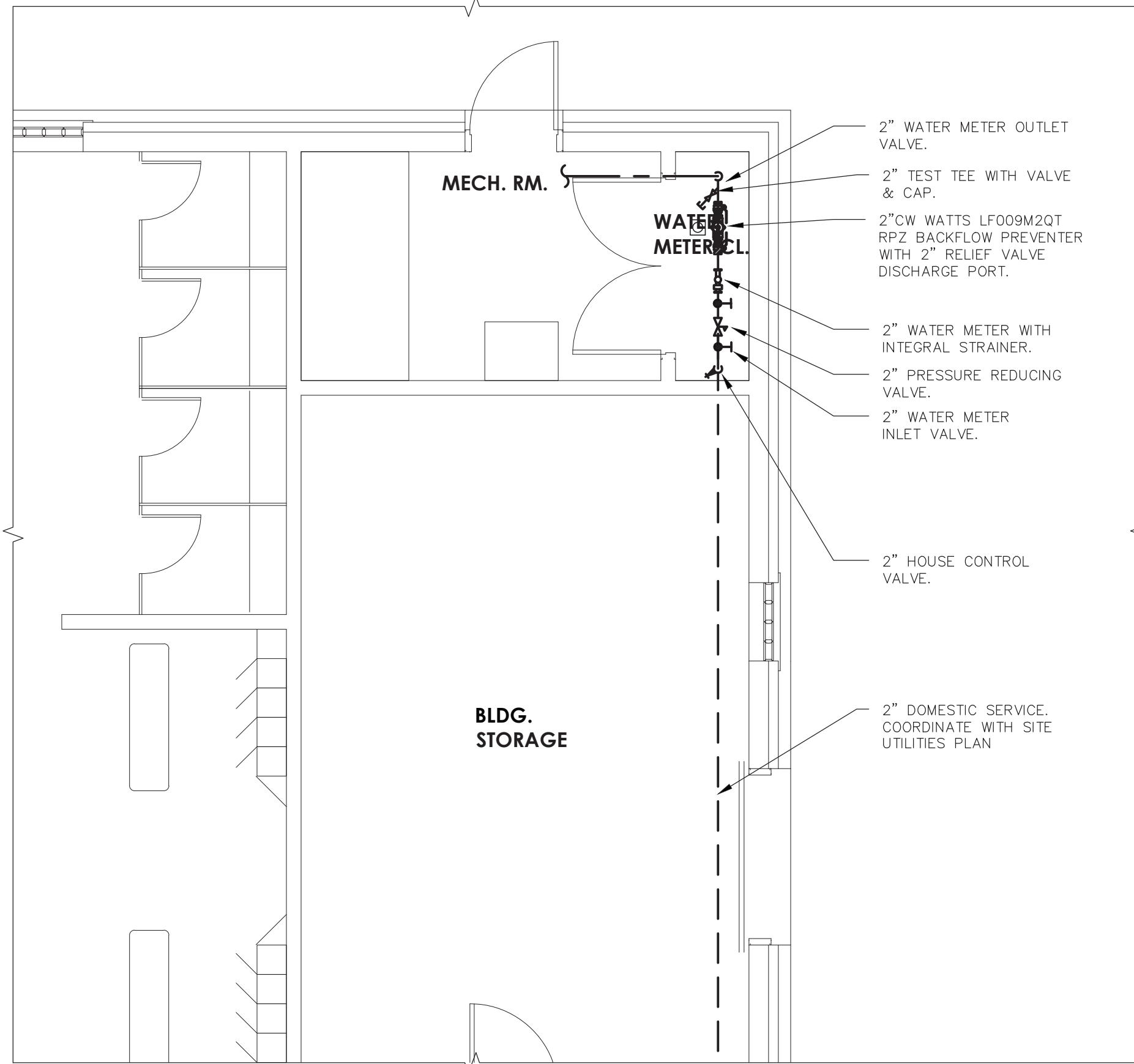
ONLY COPIES FROM THE ORIGINAL OF THIS DRAWING THAT ARE MARKED WITH THE ORIGINAL SEAL AND SIGNATURE OF THE ENGINEER SHALL BE CONSIDERED AS TRUE VALID COPIES.



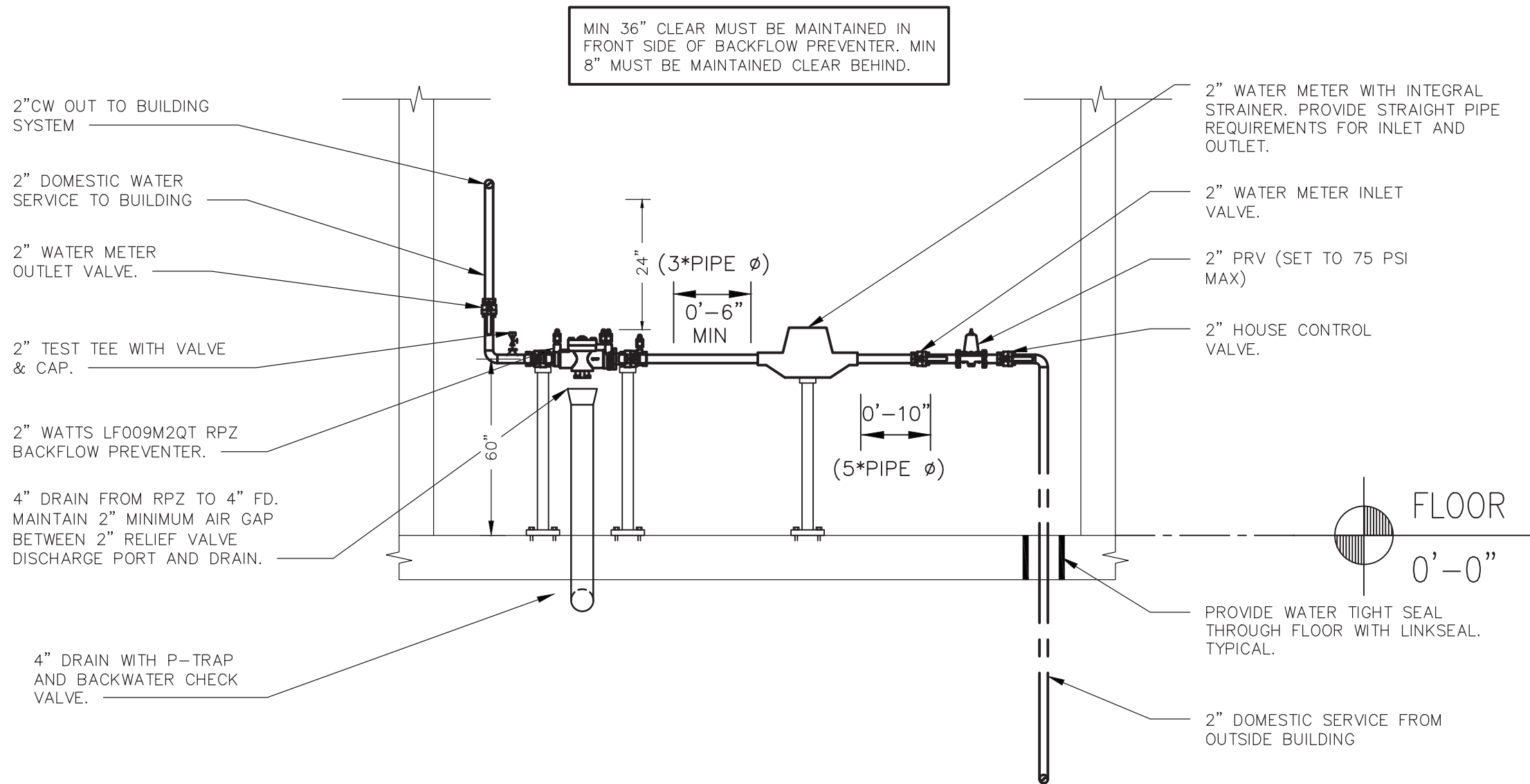
4 SITE PLAN
SCALE: 1/32" = 1'-0"
NORTH

IN CHARGE OF: SA
CHECKED BY: RS
MADE BY: CD

LEGAL NOTICE:
ALTERATIONS BY ANY PERSON, IN ANY WAY, OF ANY ITEM CONTAINED ON THIS DOCUMENT, UNLESS ACTING UNDER DIRECTION OF THE LICENSED ARCHITECT WHOSE PROFESSIONAL SEAL IS AFFIXED HERETO, IS A VIOLATION OF TITLE VII, SECT. 69.5 (B) OF NEW YORK STATE LAW.
WRITTEN DIMENSIONS ON THIS DRAWING SHALL HAVE PRECEDENCE OVER SCALED DIMENSIONS AND CONDITIONS ON THE JOB. THIS OFFICE MUST BE NOTIFIED OF ANY VARIATIONS FROM DIMENSIONS AND CONDITIONS SHOWN BY THESE DRAWINGS. SHOP DETAILS MUST BE SUBMITTED TO THIS OFFICE FOR APPROVAL BEFORE PROCEEDING WITH FABRICATION.



2 PLUMBING NEW WORK PART PLAN
SCALE: 1/4" = 1'-0"
NORTH



3 PLUMBING ELEVATION A-A
SCALE: 1/2" = 1'-0"

SYMBOLS AND ABBREVIATIONS



SYMBOL	ABBREVIATION	DESCRIPTION
— — —	CW	COLD WATER
—	AFF	ABOVE FINISHED FLOOR
—	BFP	BACK FLOW PREVENTER
—	DCV	DOUBLE CHECK VALVE
—	DN.	ELBOW DOWN
—	MAX.	MAXIMUM
—	MIN.	MINIMUM
—	PC	PLUMBING CONTRACTOR
—	RPZ	REDUCED PRESSURE ZONE
—	TYP	TYPICAL
▶	—	DIRECTION OF FLOW

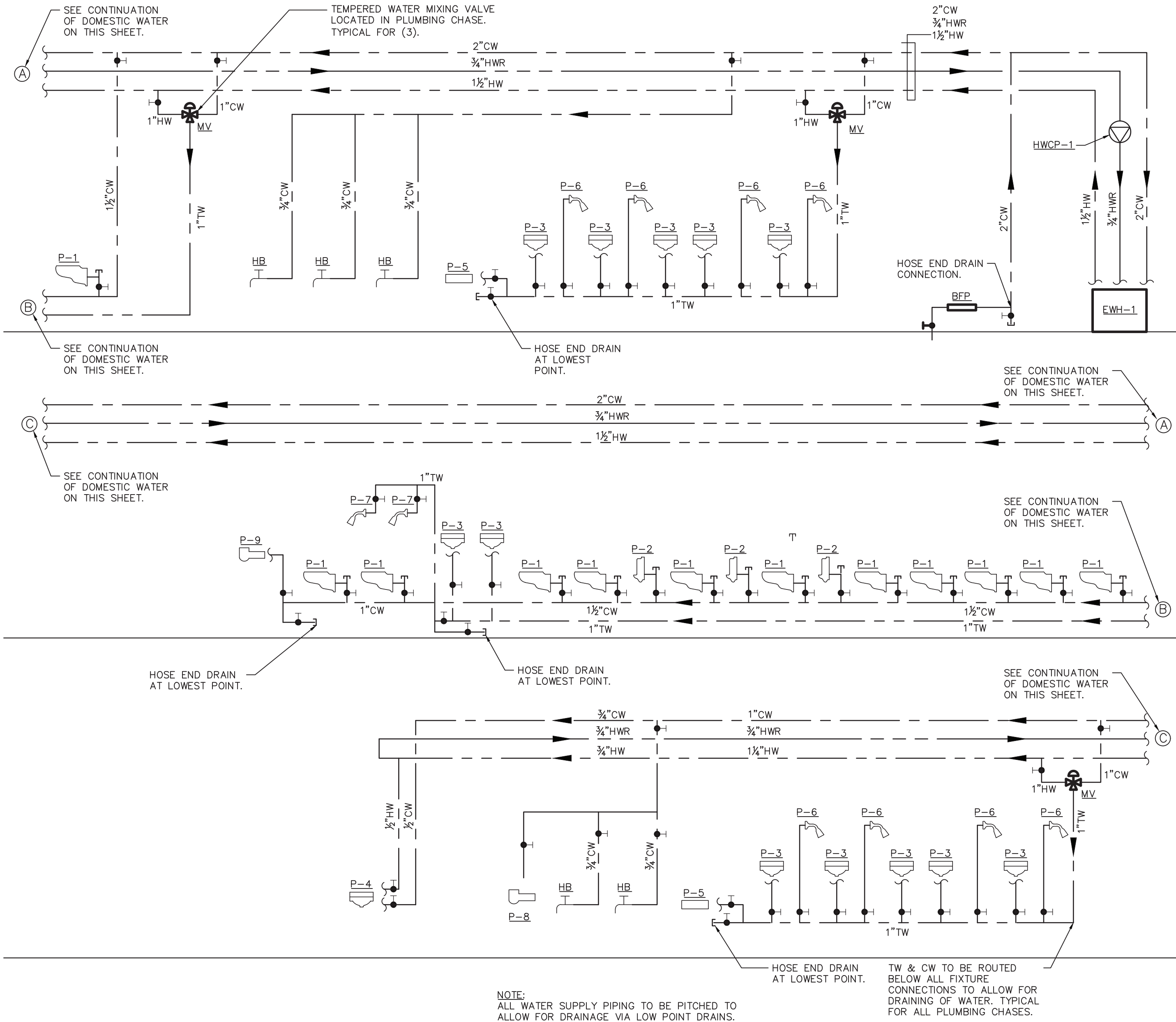
BUILDING INFORMATION

ADDRESS: CROTON POINT PARK, CROTON, NY 10595
COUNTY: WESTCHESTER COUNTY

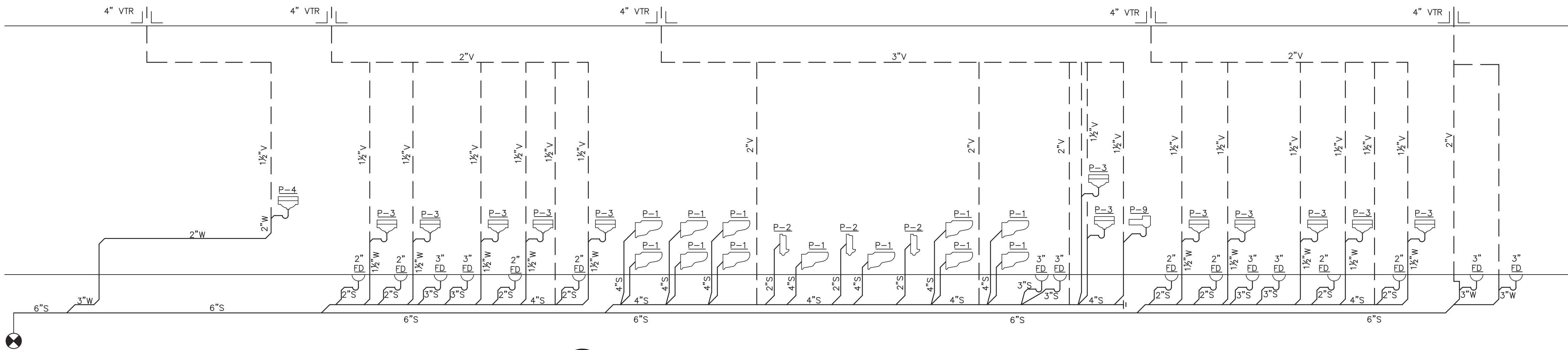


1 SITE LOCATION MAP
SCALE: NTS
NORTH

OLA Consulting Engineers  60 Broadway, Hawthorne, NY 10592 914.747.2800 8 West 38th Street, Suite 501 New York, NY 10018 646.848.4110 olace.com					
REVISION NUMBER	DATE	MADE BY	APP'D BY	REVISION	
RECORD DRAWING CERTIFICATION					
<input type="checkbox"/> AS BUILT — CHANGES AS NOTED <input type="checkbox"/> AS BUILT — NO CHANGES					
CONTRACTOR			PROJECT COORDINATOR		
NAME _____ SIGNATURE _____ TITLE _____			NAME _____ SIGNATURE _____ TITLE _____		
DATE _____			DATE _____		
WESTCHESTER COUNTY, NEW YORK DEPARTMENT OF PUBLIC WORKS AND TRANSPORTATION DIVISION OF ENGINEERING			CONTRACT NUMBER 15-553 SHEET NUMBER P-401		
NEW BATHHOUSE FACILITY CROTON POINT PARK CROTON-ON-HUDSON, NY PLUMBING BACKFLOW PREVENTER PART PLANS			SCALE: AS NOTED DATE: 6/18/21 DPW FILE NO. 2-02-P-82-0 REV. NO. 0		



2 PLUMBING DOMESTIC WATER RISER DIAGRAM
SCALE: NONE



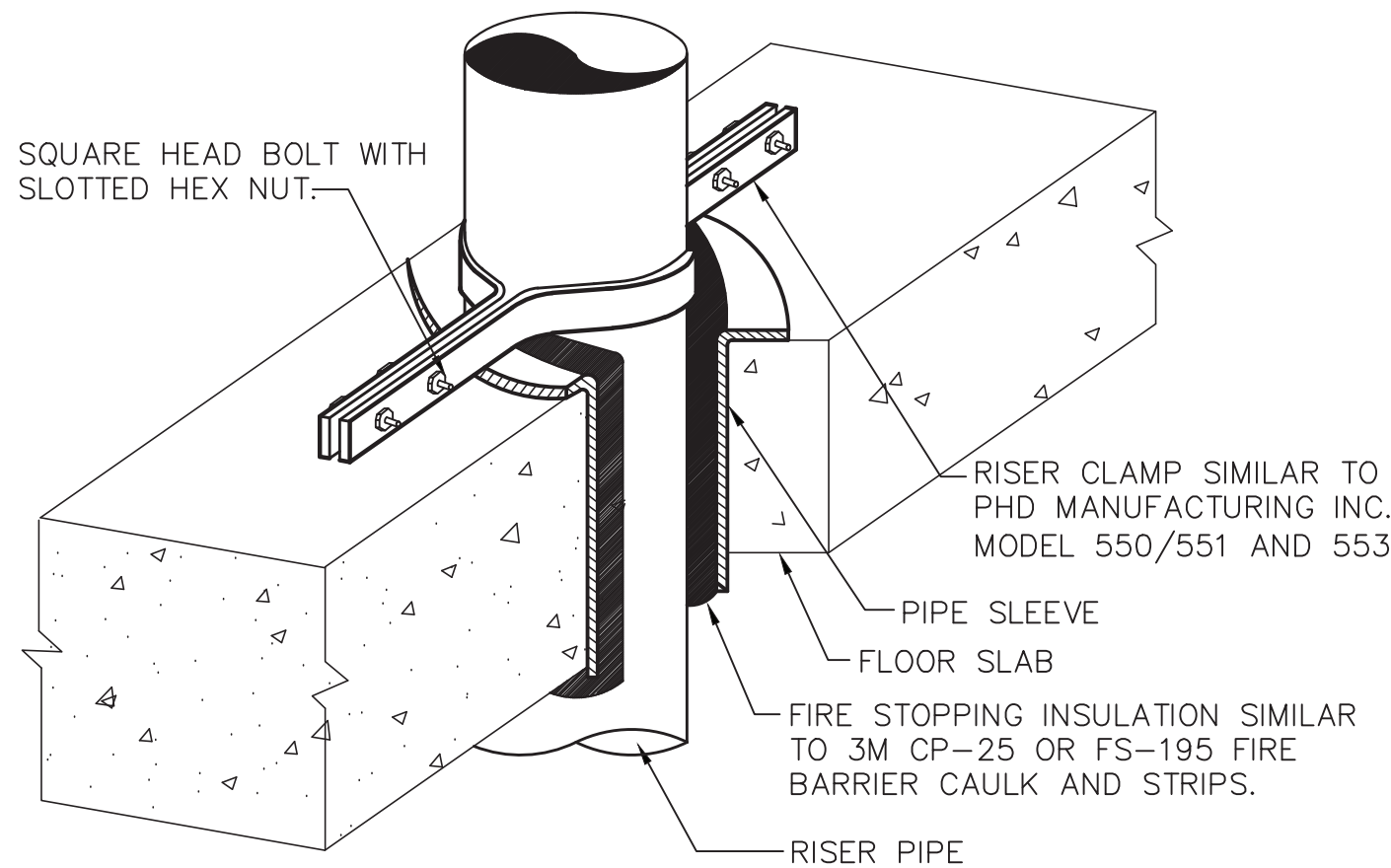
1 PLUMBING SANITARY/VENT RISER DIAGRAM
SCALE: NONE

LEGAL NOTICE:
ALTERATIONS BY ANY PERSON, IN ANY WAY, OF ANY ITEM CONTAINED ON THIS DOCUMENT, UNLESS ACTING UNDER DIRECTION OF THE LICENSED ARCHITECT WHOSE PROFESSIONAL SEAL IS AFFIXED HERETO, IS A VIOLATION OF TITLE VII, SECT. 69.5 (B) OF NEW YORK STATE LAW.
WRITTEN DIMENSIONS ON THIS DRAWING SHALL HAVE PRECEDENCE OVER SCALED DIMENSIONS AND CONDITIONS ON THE JOB. THIS OFFICE MUST BE NOTIFIED OF ANY VARIATIONS FROM DIMENSIONS AND CONDITIONS SHOWN BY THESE DRAWINGS. SHOP DETAILS MUST BE SUBMITTED TO THIS OFFICE FOR APPROVAL BEFORE PROCEEDING WITH FABRICATION.

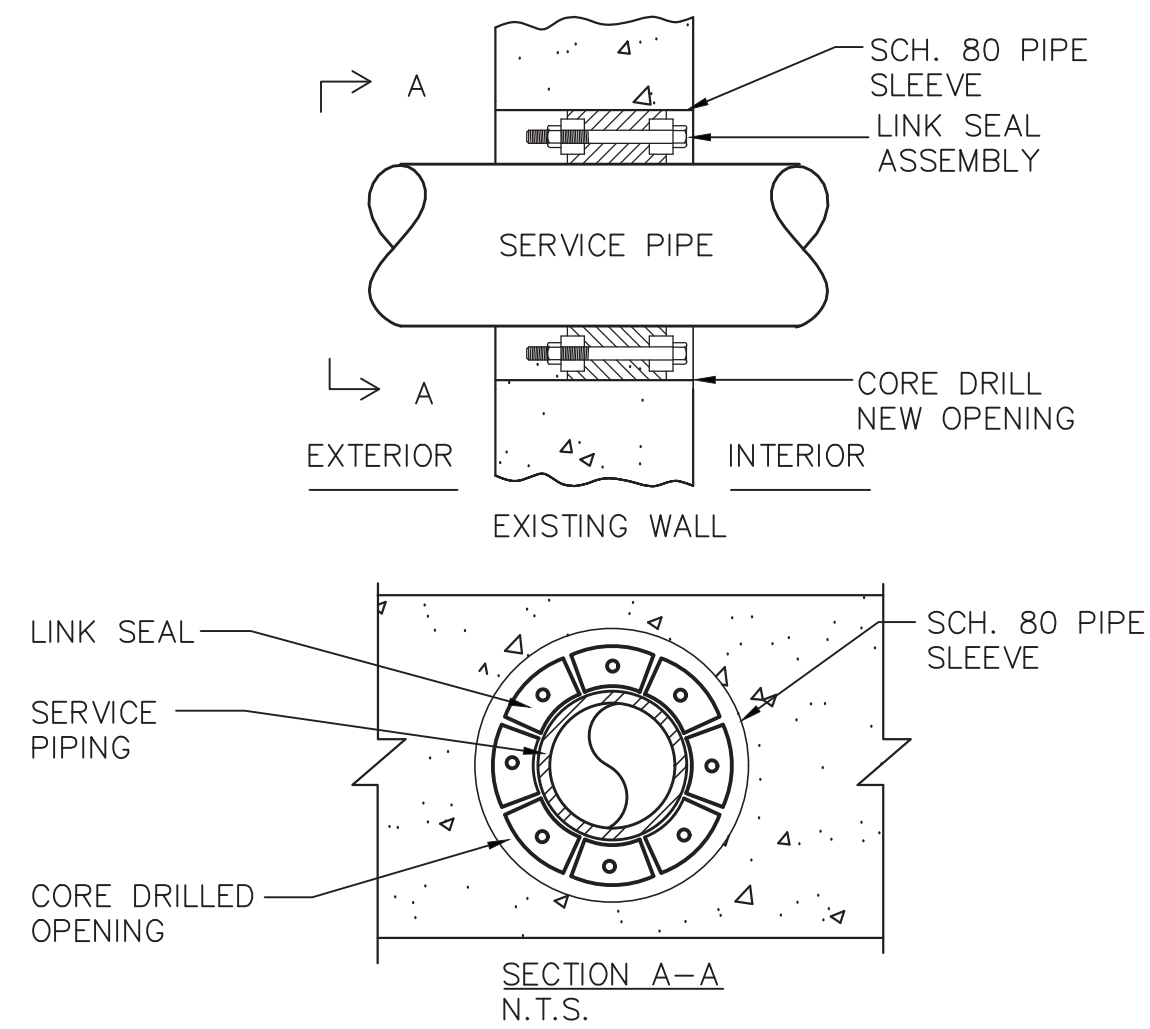
IN CHARGE OF: _____
CHECKED BY: _____
MADE BY: _____

PLUMBING FIXTURE SCHEDULE										
TAG	SYMBOLS		FIXTURES	PLUMBING CONNECTIONS						
	PLAN	ELEVATION		WASTE	INDIRECT	VENT	COLD WATER	HOT WATER	TEMPERED WATER	EQUIPMENT NOTES
P-1			WATER CLOSET WALL HUNG	4"	-	2"	1 1/4"	-	-	AMERICAN STANDARD "AFWALL MILLENNIUM" TOILET MODEL #3351.101, WALL MOUNTED, ADA COMPLIANT, BACK OUTLET, ELONGATED BOWL, 1.6 GALLONS PER FLUSH, DIRECT-FED SIPHON JET ACTION, WHITE VITREOUS CHINA. WATER CLOSET. FLUSH VALVE SHALL BE AMERICAN STANDARD MODEL 606B.161, HARD WIRED AC POWER KIT. SEAT SHALL BE AMERICAN STANDARD MODEL #5901.100 HEAVY DUTY OPEN FRONT SEAT, LESS COVER. PROVIDE EXTRA HEAVY DUTY WALL CARRIER RATED FOR 750 LBS.
P-2			URINAL	1 1/2"	-	1 1/2"	3/4"	-	-	KOHLER "BARDON" MODEL K-4991-ET, ADA COMPLIANT, WALL HUNG, WHITE VITREOUS CHINA, HIGH EFFICIENCY URINAL. FLUSH VALVE SHALL BE AMERICAN STANDARD MODEL 606B.161, HARD WIRED AC POWER KIT, ADA COMPLIANT, CHROME PLATED, 0.5 GALLONS PER FLUSH.
P-3			LAVATORY	1 1/2"	-	1 1/2"	-	-	1/2"	AMERICAN STANDARD "MURRO" WALL-HUNG LAVATORY, MODEL #0955.001, CENTER HOLE ONLY, WHITE VITREOUS CHINA, ADA COMPLIANT. FAUCET SHALL BE DELTA COMMERCIAL MODEL 590T0190 SINGLE ELECTRONIC HARD WIRED FAUCET, POLISHED CHROME, SINGLE HOLE INSTALLATION WITH VANDAL-RESISTANT SPRAY OUTLET. FAUCET SHALL BE RATED FOR 0.35 GPM.
P-4			HAND SINK	1 1/2"	-	1 1/2"	1/2"	1/2"	-	ADVANCE TABCO STAINLESS STEEL HAND SINK MODEL 7-PS-20, 17 1/2"x17 1/2" O.D. WITH 5" DEEP BOWL, 4" ON CENTER CROCK MOUNTED CENTERSET FAUCET FURNISHED WITH AERATOR, STAINLESS STEEL DRAIN OUTLET. PROVIDE SUPPLY STOPS & P-TRAP. PROVIDE ALL REQUIRED MOUNTING BRACKETS.
P-5			MOP SINK	3"	-	1 1/2"	-	-	1/2"	AMERICAN STANDARD "AKRON" WALL-MOUNTED SERVICE SINK MODEL 7695.008, WITH DRILLED BACK 2 HOLES ON 8" CENTERS WITH RIM GUARD, ENAMELED CAST IRON. PROVIDE WALL HANGER AND RIM GUARD. FAUCET SHALL BE AMERICAN STANDARD MODEL #8340.235 EXPOSED YOKE WALL MOUNT UTILITY FAUCET, POLISHED CHROME FINISH. PROVIDE AMERICAN STANDARD #7798.030 CAST IRON "P" TRAP STANDARD TO WALL AND STRAINER FOR 3" IRON PIPE.
P-6			SHOWER	2"	-	1 1/2"	-	-	1/2"	SPEAKMAN ANYSTREAM 8 JET SHOWERHEAD, MODEL S-2251-E2, SOLID BRASS CONSTRUCTION, 2.0 GPM FLOW CONTROL, POLISHED CHROME FINISH. VALVE TRIM SHALL BE SPEAKMAN SM-5000 ANTI-SCALD THERMOSTATIC/PRESSURE BALANCED SHOWER VALVE, CHROME PLATED BRASS WALL PLATE AND LEVEL HANDLE, BRASS BODY WITH INTEGRAL SPRING CHECK STOPS, VANDAL RESISTANT.
P-7			OUTDOOR SHOWER	-	-	1 1/2"	-	-	1"	OUTDOOR SHOWER COMPANY WALL MOUNTED COLD WATER SHOWER MODEL WM-442-ADA, DEL-78 1.75 GPM STAINLESS STEEL SHOWER HEAD, SR-40 1/2"x39" 304 SCH 40 STAINLESS STEEL RISER, THREADED BOTH ENDS, WB-2 2" STAINLESS STEEL WALL BRACKET AND FLANGE. PROVIDE MODEL AV-442-ADA METERED PUSH HANDLE CHROME PLATED ANGLE VALVE.
P-8			DRINKING FOUNTAIN	1 1/2"	-	-	1/2"	-	-	MURDOCK WALL MOUNTED BARRIER FREE DRINKING FOUNTAIN GR SERIES MODEL GRC74, ALL STAINLESS STEEL, ADA COMPLIANT, 18 GAGE, 304 STAINLESS STEEL BOWL, 12 GAGE HEAVY DUTY STAINLESS STEEL ARM, CORROSION & SCRATCH RESISTANT FINISH, POLISHED CHROME PLATED BRASS, ANTI-ROTATION NON-SQUIRT BUBBLER, 100 MESH INLET STRAINER, 1-1/4" P-TRAP, VANDAL RESISTANT BOTTOM STAINLESS STEEL PLATE & SCREWS, MOUNTING PLATE, FREEZE RESISTANT VALVE.
FD			FLOOR DRAIN	2"/3"	-	1 1/2"	-	-	-	FOR SHOWERS: ZURN Z451 SHALLOW TRAP DRAIN WITH TYPE B STRAINER, 3" PIPE SIZE WITH 6" ROUND NICKEL-BRONZE HEEL-PROOF STRAINER, CAST IRON BODY, CAST IRON DRAINAGE FLANGE, VANDAL PROOF SECURED TOP OR APPROVED EQUAL. FOR TOILET ROOMS: ZURN ZN-460B 2" PIPE SIZE SHALLOW BODY FLOOR DRAIN WITH SIDE OUTLET AND 6" TYPE B POLISHED NICKEL BRONZE STRAINER, DURA COATED CAST IRON BODY WITH SEEPAE SLOTS AND VANDAL PROOF SECURED TOP. PROVIDE 2" CAST IRON P-TRAP WITH SIDE INLET. FOR MECHANICAL ROOM: ZURN ZN-415B WITH CAST IRON BODY, CAST IRON DRAINAGE FLANGE, SEDIMENT BUCKET, FLASHING COLLAR, 8" ROUND HEAVY DUTY CAST IRON GRATE OR APPROVED EQUAL. PROVIDE DEEP SEAL TRAP WITH PRIMING TAP.
CO			CLEANOUT	-	-	-	-	-	-	WALL CLEANOUT WITH CLEANOUT TEE AND CHROME-PLATED BRONZE SQUARE ACCESS COVER AND FRAME. WADE #W-8480 OR APPROVED EQUAL.
CODP			CLEANOUT DECKPLATE	-	-	-	-	-	-	FLOOR CLEANOUT WITH ADJUSTABLE HEAD, ANCHOR FLANGE, CUT-OFF SECTIONS AND ROUND SCORIALIZED NICKEL-BRONZE TOP. WADE #W-6000 OR APPROVED EQUAL. PROVIDE HEAVY DUTY CAST IRON TOP FOR MECHANICAL ROOMS.
HB			HOSE BIB	-	-	-	3/4"	-	-	IN FINISHED AREAS, WASHDOWN FAUCET SHALL BE POLISHED CHROME-PLATED WALL FAUCET WITH WALL FLANGE, 1/2" INLET, 3/4" HOSE THREAD OUTLET AND REMOVABLE LOOSE KEY T-HANDLE. CHICAGO #293-6 WITH #E27 VACUUM BREAKER OR ACCEPTABLE EQUIVALENT.
NFHB			NON FREEZE HOSE BIB	-	-	-	3/4"	-	-	CAST BRASS, THREADED, NON-FREEZE, HEAVY-DUTY HYDRANT WITH NIKALOY BOX AND LOCKING COVER, BRASS OPERATING PARTS, 3/4" HPT HOSE OUTLET, 3/4" IPS OUTSIDE, ELBOW ADAPTER, "I" HANDLE KEY, AND INTEGRAL VACUUM BREAKER/BACKFLOW PREVENTER. WADE #8600.
MV			TEMPERED WATER MIXING VALVE	-	-	-	1"	1"	1"	TEMPERED WATER MIXING VALVE: SHALL BE WATTS MODEL LFL1170-M2, 1" HOT WATER TEMPERATURE CONTROL VALVE. OUTLET WATER TEMPERATURE SHALL BE SET TO 80°F. LEAD FREE VALVE BODY, INTEGRAL CHECK VALVES, MINIMUM SUPPLY PRESSURE 30PSI, OUTLET TEMPERATURE RANGE OF 60-120°F.
NOTE: 1.) SUPPLY MANUFACTURER INDICATED ABOVE OR APPROVED EQUAL.										

OLA Consulting Engineers 60 Broadway, Hawthorne, NY 10592 914.747.2800 8 West 38th Street, Suite 501 New York, NY 10018 646.849.4110 olace.com							
REVISION NUMBER	DATE	MADE BY	APP'D BY	REVISION			
RECORD DRAWING CERTIFICATION							
<input type="checkbox"/> AS BUILT - CHANGES AS NOTED <input type="checkbox"/> AS BUILT - NO CHANGES							
CONTRACTOR NAME _____ SIGNATURE _____ DATE _____				PROJECT COORDINATOR NAME _____ SIGNATURE _____ DATE _____			
WESTCHESTER COUNTY, NEW YORK DEPARTMENT OF PUBLIC WORKS AND TRANSPORTATION DIVISION OF ENGINEERING				CONTRACT NUMBER 15-553 SHEET NUMBER P-501 SHEET NO. 39 OF 53			
NEW BATHHOUSE FACILITY CROTON POINT PARK CROTON-ON-HUDSON, NY PLUMBING RISER DIAGRAMS & SCHEDULE				SCALE: AS NOTED DATE: 6/18/21 DPW FILE NO. 2-02-P-83-0 REV. NO. 0			

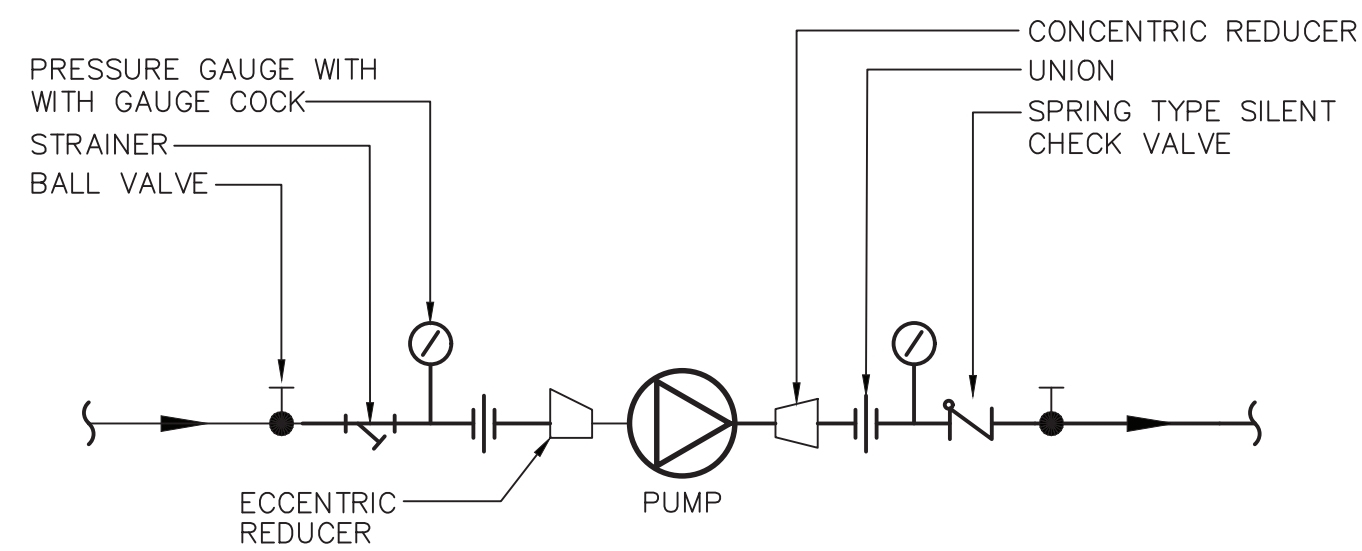


6 VERTICAL PIPE SUPPORT DETAIL
SCALE: NONE



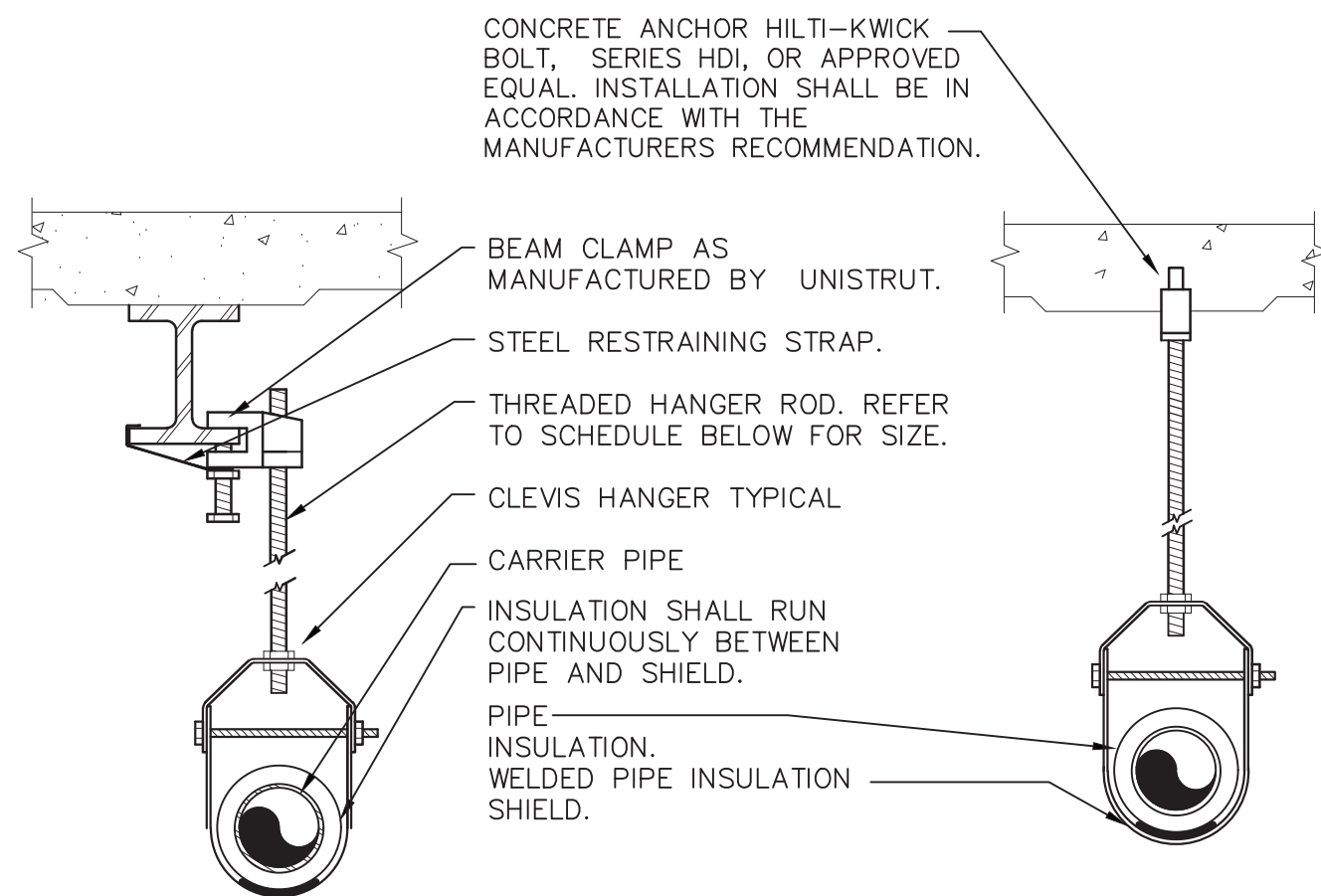
- NOTES:
- 1.) SEAL ASSEMBLY BASED ON THUNDERLINE MODEL "C" LINK-SEAL MODULAR SEAL, WITH EPDM SEAL ELEMENT, COMPOSITE PRESSURE PLATES, STEEL WITH 2-PART ZINC DICHROMATE & ORGANIC COATED NUTS AND BOLTS RATED FOR AN OPERATING TEMPERATURE RANGE OF -40°F TO +250°F.
 - 2.) LINK SEAL ASSEMBLY SHALL BE INSTALLED ON ALL BELOW SLAB FLOOR AND WALL PENETRATIONS.

4 LINK SEAL DETAIL
SCALE: NONE



MAX. GPM	3.5	7	20	43	75
PIPE SIZE	3/4	1	1-1/2	2	2-1/2

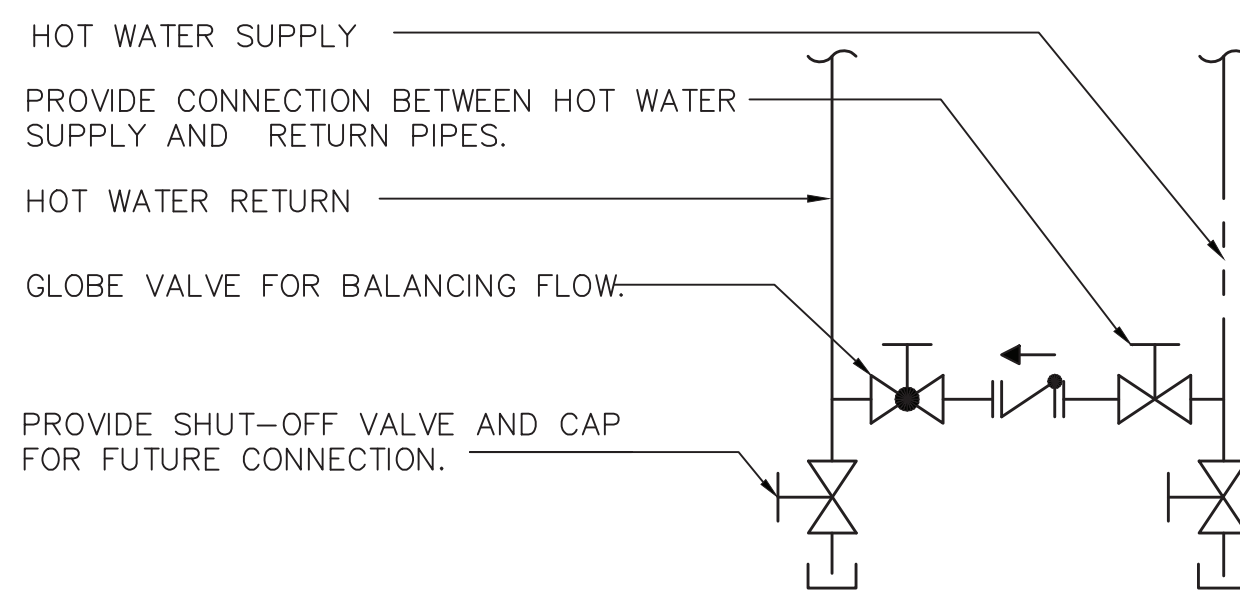
2 IN-LINE PUMP PIPING SCHEMATIC
SCALE: NONE



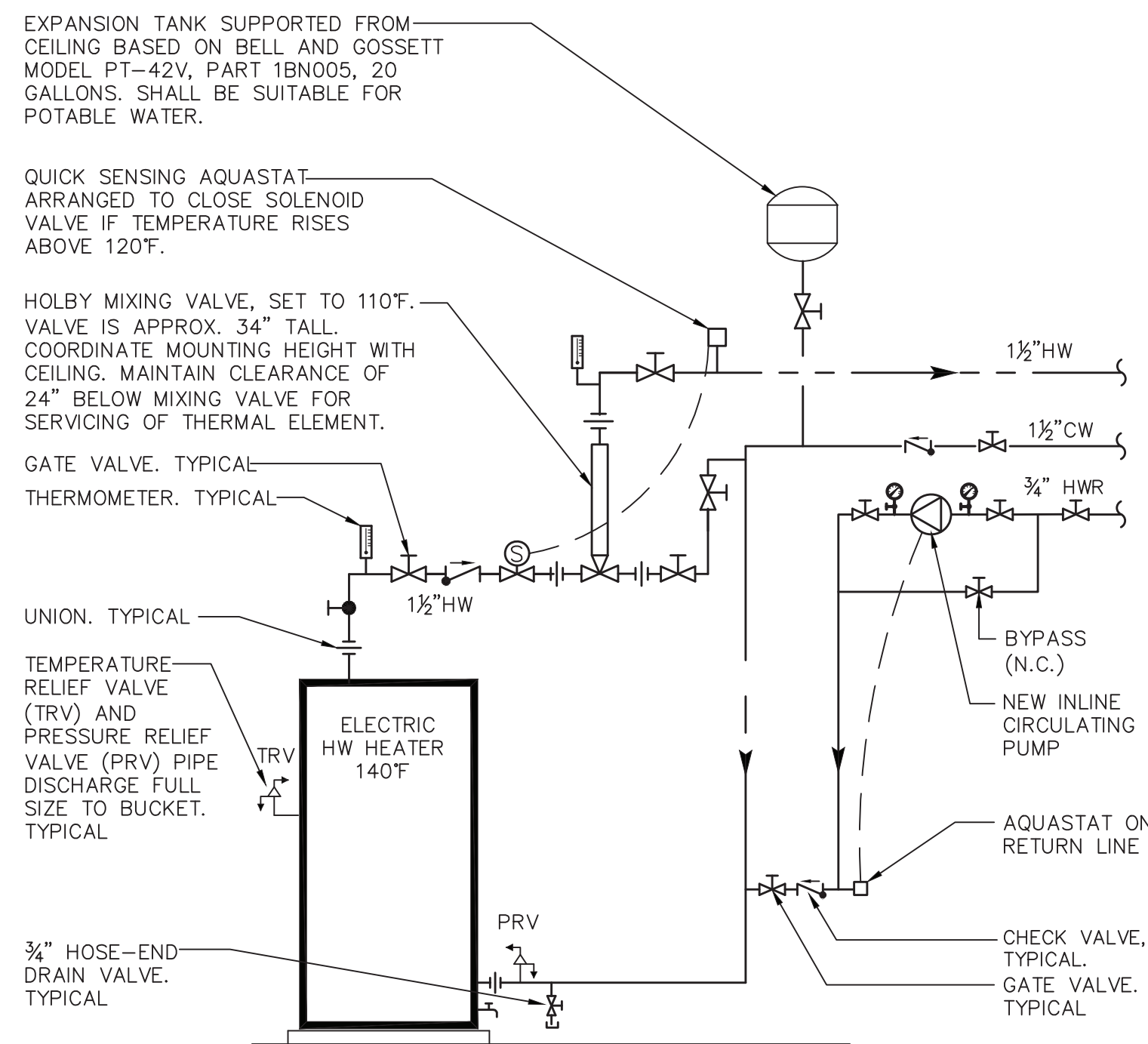
PIPE HANGER SCHEDULE					
PIPE DIA.	3/4"-2"	2 1/2"-3"	4"-5"	6"	8"-12"
HANGER DIA.	3/8"	1/2"	5/8"	3/4"	7/8"

- NOTES:
- 1.) CLEVIS HANGERS WITH WELDED INSULATION SHIELDS SIMILAR TO RAUCH FIG. 100SH ON ALL PIPES LARGER THAN 1".
 - 2.) FOR PIPES 1" OR SMALLER, A BAND HANGER WITH INSULATION SHIELD MAY BE USED SIMILAR TO RAUCH FIG. NO. 1ASH.
 - 3.) FOR NON-INSULATED PIPE, INSULATION SHIELDS MAY BE OMITTED.
 - 4.) ALL PIPE HANGERS SHALL BE GALVANIZED STEEL OR FACTORY PAINTED BLACK WITH ENAMEL.
 - 5.) FOR NON-FERROUS PIPING WITHOUT INSULATION, ALL HANGERS SHALL BE COPPER PLATED OR FURNISHED WITH A DI-ELECTRIC BETWEEN PIPE AND HANGERS.

5 PIPE HANGER DETAIL
SCALE: NONE



3 HOT WATER CONNECTION DETAIL
SCALE: NONE



- NOTES:
- 1.) MOUNT HOT WATER HEATER ON 3" HOUSEKEEPING PAD.

1 HOT WATER HEATER PIPING SCHEMATIC
SCALE: NONE

OLA Consulting Engineers 60 Broadway, Hawthorne, NY 10532 914.747.2800 8 West 38th Street, Suite 501 New York, NY 10018 646.848.4110 olace.com					
REVISION NUMBER	DATE	MADE BY	APP'D BY	REVISION	
RECORD DRAWING CERTIFICATION					
<input type="checkbox"/> AS BUILT - CHANGES AS NOTED <input type="checkbox"/> AS BUILT - NO CHANGES					
CONTRACTOR NAME SIGNATURE TITLE			PROJECT COORDINATOR NAME SIGNATURE TITLE		
WESTCHESTER COUNTY, NEW YORK DEPARTMENT OF PUBLIC WORKS DIVISION OF ENGINEERING			NEW BATHHOUSE FACILITY CROTON POINT PARK CROTON-ON-HUDSON, NY, PLUMBING DETAILS		
CONTRACT NUMBER 15-553		SHEET NUMBER P-701		SCALE: AS NOTED DATE: 6/18/21	
SHEET NO. 40 OF 53		DPW FILE NO. 2-02-P-84-0		REV. NO. 0	

IN CHARGE OF: _____
CHECKED BY: _____
MADE BY: _____

LEGAL NOTICE:
ALTERATIONS BY ANY PERSON, IN ANY WAY, OF ANY ITEM CONTAINED ON THIS DOCUMENT, UNLESS ACTING UNDER DIRECTION OF THE LICENSED ARCHITECT WHOSE PROFESSIONAL SEAL IS AFFIXED HERETO, IS A VIOLATION OF TITLE VII, SECT. 69.5 (B) OF NEW YORK STATE LAW.
WRITTEN DIMENSIONS ON THIS DRAWING SHALL HAVE PRECEDENCE OVER SCALED DIMENSIONS AND CONDITIONS ON THE JOB. THIS OFFICE MUST BE NOTIFIED OF ANY VARIATIONS FROM DIMENSIONS AND CONDITIONS SHOWN BY THESE DRAWINGS. SHOP DETAILS MUST BE SUBMITTED TO THIS OFFICE FOR APPROVAL BEFORE PROCEEDING WITH FABRICATION.