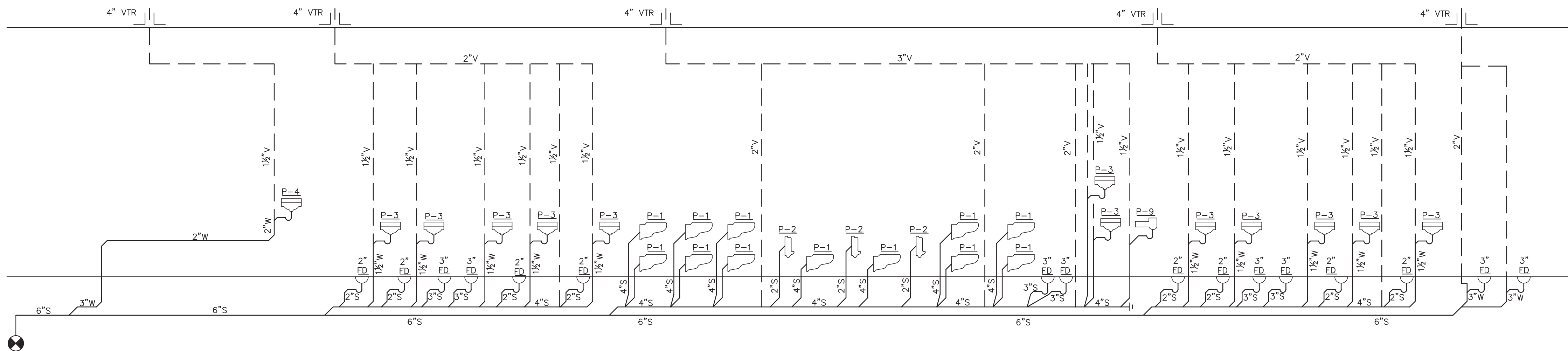


2 PLUMBING DOMESTIC WATER RISER DIAGRAM
SCALE: NONE



1 PLUMBING SANITARY/VENT RISER DIAGRAM
SCALE: NONE

LEGAL NOTICE:
ALTERATIONS BY ANY PERSON, IN ANY WAY, OF ANY ITEM CONTAINED ON THIS DOCUMENT, UNLESS ACTING UNDER DIRECTION OF THE LICENSED ARCHITECT WHOSE PROFESSIONAL SEAL IS AFFIXED HERETO, IS A VIOLATION OF TITLE VII, SECT. 69.5 (B) OF NEW YORK STATE LAW.
WRITTEN DIMENSIONS ON THIS DRAWING SHALL HAVE PRECEDENCE OVER SCALED DIMENSIONS AND CONDITIONS ON THE JOB. THIS OFFICE MUST BE NOTIFIED OF ANY VARIATIONS FROM DIMENSIONS AND CONDITIONS SHOWN BY THESE DRAWINGS. SHOP DETAILS MUST BE SUBMITTED TO THIS OFFICE FOR APPROVAL BEFORE PROCEEDING WITH FABRICATION.

IN CHARGE OF: _____
CHECKED BY: _____
MADE BY: _____

PLUMBING FIXTURE SCHEDULE										
TAG	SYMBOLS		FIXTURES	PLUMBING CONNECTIONS						
	PLAN	ELEVATION		WASTE	INDIRECT	VENT	COLD WATER	HOT WATER	TEMPERED WATER	EQUIPMENT NOTES
P-1			WATER CLOSET WALL HUNG	4"	-	2"	1 1/4"	-	-	AMERICAN STANDARD "AFWALL MILLENNIUM" TOILET MODEL #3351.101, WALL MOUNTED, ADA COMPLIANT, BACK OUTLET, ELONGATED BOWL, 1.6 GALLONS PER FLUSH, DIRECT-FED SIPHON JET ACTION, WHITE VITREOUS CHINA. WATER CLOSET. FLUSH VALVE SHALL BE AMERICAN STANDARD MODEL 606B.161, HARD WIRED AC POWER KIT. SEAT SHALL BE AMERICAN STANDARD MODEL #5901.100 HEAVY DUTY OPEN FRONT SEAT, LESS COVER. PROVIDE EXTRA HEAVY DUTY WALL CARRIER RATED FOR 750 LBS.
P-2			URINAL	1 1/2"	-	1 1/2"	3/4"	-	-	KOHLER "BARDON" MODEL K-4991-ET, ADA COMPLIANT, WALL HUNG, WHITE VITREOUS CHINA, HIGH EFFICIENCY URINAL. FLUSH VALVE SHALL BE AMERICAN STANDARD MODEL 606B.161, HARD WIRED AC POWER KIT, ADA COMPLIANT, CHROME PLATED, 0.5 GALLONS PER FLUSH.
P-3			LAVATORY	1 1/2"	-	1 1/2"	-	-	1/2"	AMERICAN STANDARD "MURRO" WALL-HUNG LAVATORY, MODEL #0955.001, CENTER HOLE ONLY, WHITE VITREOUS CHINA, ADA COMPLIANT. FAUCET SHALL BE DELTA COMMERCIAL MODEL 590T0190 SINGLE ELECTRONIC HARD WIRED FAUCET, POLISHED CHROME, SINGLE HOLE INSTALLATION WITH VANDAL-RESISTANT SPRAY OUTLET. FAUCET SHALL BE RATED FOR 0.35 GPM.
P-4			HAND SINK	1 1/2"	-	1 1/2"	1/2"	1/2"	-	ADVANCE TABCO STAINLESS STEEL HAND SINK MODEL 7-PS-20, 17 1/2"x17 1/2" O.D. WITH 5" DEEP BOWL, 4" ON CENTER CROCK MOUNTED CENTERSET FAUCET FURNISHED WITH AERATOR, STAINLESS STEEL DRAIN OUTLET. PROVIDE SUPPLY STOPS & P-TRAP. PROVIDE ALL REQUIRED MOUNTING BRACKETS.
P-5			MOP SINK	3"	-	1 1/2"	-	-	1/2"	AMERICAN STANDARD "AKRON" WALL-MOUNTED SERVICE SINK MODEL 7695.008, WITH DRILLED BACK 2 HOLES ON 8" CENTERS WITH RIM GUARD, ENAMELED CAST IRON. PROVIDE WALL HANGER AND RIM GUARD. FAUCET SHALL BE AMERICAN STANDARD MODEL #8340.235 EXPOSED YOKE WALL MOUNT UTILITY FAUCET, POLISHED CHROME FINISH. PROVIDE AMERICAN STANDARD #7798.030 CAST IRON "P" TRAP STANDARD TO WALL AND STRAINER FOR 3" IRON PIPE.
P-6			SHOWER	2"	-	1 1/2"	-	-	1/2"	SPEAKMAN ANYSTREAM 8 JET SHOWERHEAD, MODEL S-2251-E2, SOLID BRASS CONSTRUCTION, 2.0 GPM FLOW CONTROL, POLISHED CHROME FINISH. VALVE TRIM SHALL BE SPEAKMAN SM-5000 ANTI-SCALD THERMOSTATIC/PRESSURE BALANCED SHOWER VALVE, CHROME PLATED BRASS WALL PLATE AND LEVEL HANDLE, BRASS BODY WITH INTEGRAL SPRING CHECK STOPS, VANDAL RESISTANT.
P-7			OUTDOOR SHOWER	-	-	1 1/2"	-	-	1"	OUTDOOR SHOWER COMPANY WALL MOUNTED COLD WATER SHOWER MODEL WM-442-ADA, DEL-78 1.75 GPM STAINLESS STEEL SHOWER HEAD, SR-40 1/2"x39" 304 SCH 40 STAINLESS STEEL RISER, THREADED BOTH ENDS, WB-2 2" STAINLESS STEEL WALL BRACKET AND FLANGE. PROVIDE MODEL AV-442-ADA METERED PUSH HANDLE CHROME PLATED ANGLE VALVE.
P-8			DRINKING FOUNTAIN	1 1/2"	-	-	1/2"	-	-	MURDOCK WALL MOUNTED BARRIER FREE DRINKING FOUNTAIN GR SERIES MODEL GRC74, ALL STAINLESS STEEL, ADA COMPLIANT, 18 GAGE, 304 STAINLESS STEEL BOWL, 12 GAGE HEAVY DUTY STAINLESS STEEL ARM, CORROSION & SCRATCH RESISTANT FINISH, POLISHED CHROME PLATED BRASS, ANTI-ROTATION NON-SQUIRT BUBBLER, 100 MESH INLET STRAINER, 1-1/4" P-TRAP, VANDAL RESISTANT BOTTOM STAINLESS STEEL PLATE & SCREWS, MOUNTING PLATE, FREEZE RESISTANT VALVE.
FD			FLOOR DRAIN	2"/3"	-	1 1/2"	-	-	-	FOR SHOWERS: ZURN Z451 SHALLOW TRAP DRAIN WITH TYPE B STRAINER, 3" PIPE SIZE WITH 6" ROUND NICKEL-BRONZE HEEL-PROOF STRAINER, CAST IRON BODY, CAST IRON DRAINAGE FLANGE, VANDAL PROOF SECURED TOP OR APPROVED EQUAL. FOR TOILET ROOMS: ZURN ZN-460B 2" PIPE SIZE SHALLOW BODY FLOOR DRAIN WITH SIDE OUTLET AND 6" TYPE B POLISHED NICKEL BRONZE STRAINER, DURA COATED CAST IRON BODY WITH SEEPAE SLOTS AND VANDAL PROOF SECURED TOP. PROVIDE 2" CAST IRON P-TRAP WITH SIDE INLET. FOR MECHANICAL ROOM: ZURN ZN-415B WITH CAST IRON BODY, CAST IRON DRAINAGE FLANGE, SEDIMENT BUCKET, FLASHING COLLAR, 8" ROUND HEAVY DUTY CAST IRON GRATE OR APPROVED EQUAL. PROVIDE DEEP SEAL TRAP WITH PRIMING TAP.
CO			CLEANOUT	-	-	-	-	-	-	WALL CLEANOUT WITH CLEANOUT TEE AND CHROME-PLATED BRONZE SQUARE ACCESS COVER AND FRAME. WADE #W-8480 OR APPROVED EQUAL.
CODP			CLEANOUT DECKPLATE	-	-	-	-	-	-	FLOOR CLEANOUT WITH ADJUSTABLE HEAD, ANCHOR FLANGE, CUT-OFF SECTIONS AND ROUND SCORIALIZED NICKEL-BRONZE TOP. WADE #W-6000 OR APPROVED EQUAL. PROVIDE HEAVY DUTY CAST IRON TOP FOR MECHANICAL ROOMS.
HB			HOSE BIB	-	-	-	3/4"	-	-	IN FINISHED AREAS, WASHDOWN FAUCET SHALL BE POLISHED CHROME-PLATED WALL FAUCET WITH WALL FLANGE, 1/2" INLET, 3/4" HOSE THREAD OUTLET AND REMOVABLE LOOSE KEY T-HANDLE. CHICAGO #293-6 WITH #E27 VACUUM BREAKER OR ACCEPTABLE EQUIVALENT.
NFHB			NON FREEZE HOSE BIB	-	-	-	3/4"	-	-	CAST BRASS, THREADED, NON-FREEZE, HEAVY-DUTY HYDRANT WITH NIKALOY BOX AND LOCKING COVER, BRASS OPERATING PARTS, 3/4" HPT HOSE OUTLET, 3/4" IPS OUTSIDE, ELBOW ADAPTER, "T" HANDLE KEY, AND INTEGRAL VACUUM BREAKER/BACKFLOW PREVENTER. WADE #8600.
MV			TEMPERED WATER MIXING VALVE	-	-	-	1"	1"	1"	TEMPERED WATER MIXING VALVE: SHALL BE WATTS MODEL LFL1170-M2, 1" HOT WATER TEMPERATURE CONTROL VALVE. OUTLET WATER TEMPERATURE SHALL BE SET TO 80°F. LEAD FREE VALVE BODY, INTEGRAL CHECK VALVES, MINIMUM SUPPLY PRESSURE 30PSI, OUTLET TEMPERATURE RANGE OF 60-120°F.
NOTE: 1.) SUPPLY MANUFACTURER INDICATED ABOVE OR APPROVED EQUAL.										