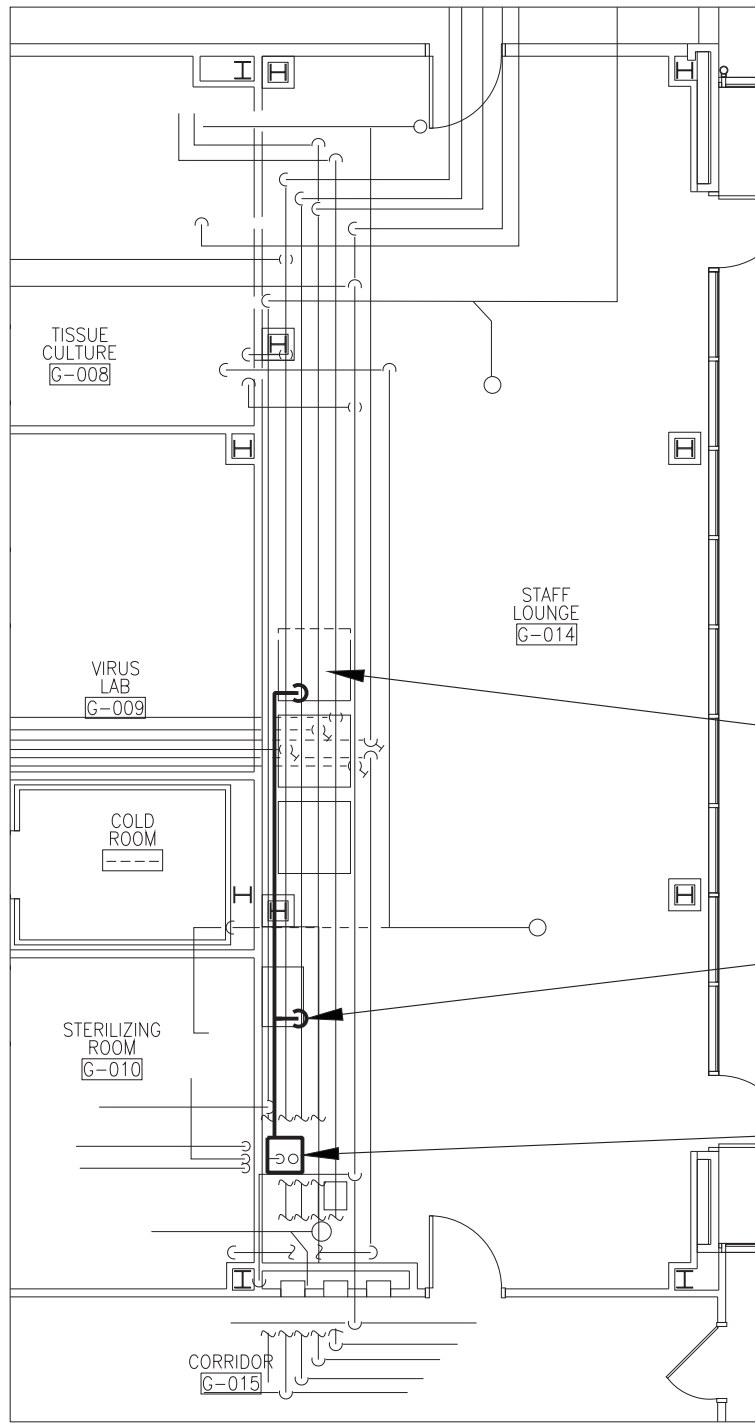


REMOVE SINK, TRAP AND BRAIDED CONNECTIONS FROM STOP VALVES. RETAIN EXISTING CW, HW, W, AND V PIPING FOR CONNECTION TO NEW SINK. REFER TO NEW WORK PART PLAN.

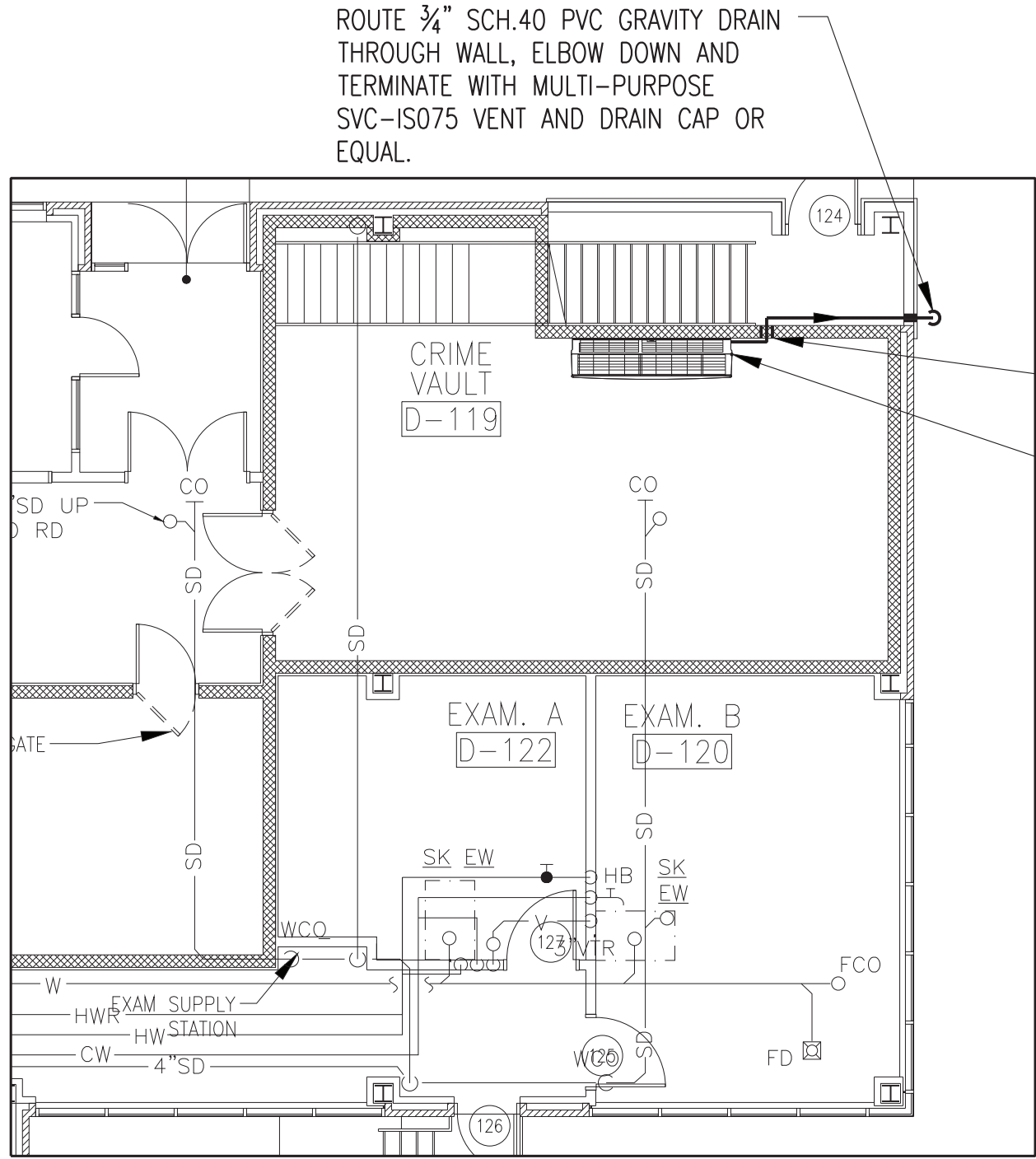
REMOVE DISHWASHER IN ITS ENTIRETY AND CAP SUPPLY PIPING AT MAIN.



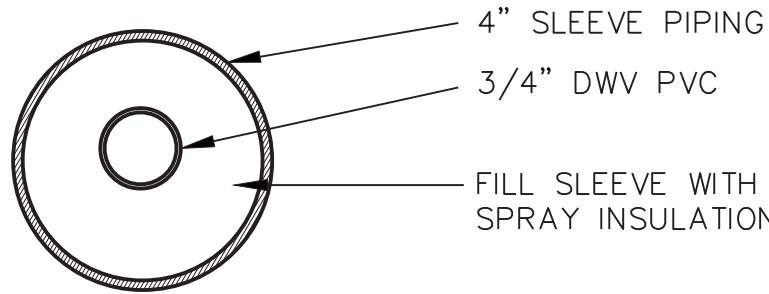
PROVIDE NEW 1/2" LLDPE WATER SUPPLY TO REFRIGERATOR ICE MAKER. FEED FROM BENEATH SINK. SEE PIPING NOTES BELOW.

NEW 1/2" LLDPE WATER SUPPLY TO COFFEE MAKER. FEED FROM BENEATH SINK. SEE PIPING NOTES BELOW.

PROVIDE NEW SINK: 1/2" CW, 1/2" HW, 2"W, 1-1/2" V CONNECTION. EXTEND PIPING AS REQUIRED FOR CONNECTION TO EXISTING. (TYPICAL). PROVIDE NEW STOP VALVES BENEATH SINK.



NEW PENETRATION (SEE DETAIL ON THIS SHEET)  
NEW AC-1 INDOOR UNIT (SEE SHEET M-3)



1 STAFF LOUNGE PLUMBING DEMOLITION PLAN  
P-1 SCALE: 1/8"=1'-0"

2 NEW STAFF LOUNGE PLUMBING  
P-1 SCALE: 1/8"=1'-0"

3 CRIME VAULT MECHANICAL PLAN  
P-1 1/8"=1'-0"

4 PIPE WALL PENETRATION DETAIL  
P-1 SCALE: NONE

## PLUMBING EQUIPMENT & NOTES

- KITCHEN SINK:** REPLACE SINK WITH GLACIER BAY INVERNESS DROP-IN ACRYLIC 25 IN. 4-HOLE SINGLE BOWL KITCHEN SINK IN WHITE, MODEL # 22400 OR APPROVED EQUAL, INCLUDE ALL NEW MATCHING ACCESSORIES AS REQUIRED FOR COMPLETE SINK REPLACEMENT. PROVIDE NEW STAINLESS STL. BRAIDED SUPPLY AND HEAVY GAUGE TRAP.
- FAUCET:** REPLACE FAUCET WITH DELTA COLLINS SINGLE-HANDLE STANDARD KITCHEN FAUCET WITH SIDE SPRAYER IN WHITE, MODEL # 440-WH-DST
- RANGE:** SEE SHEET A-16. SEE MECHANICAL SHEETS FOR RANGE HOOD DETAILS.
- COFFEE MAKER:** SEE SHEET A-16. CONNECT TO WATER SUPPLY BENEATH SINK WITH 1/2 TURN STOP VALVE.
- REFRIDGERATOR:** SEE SHEET A-16. CONNECT TO WATER SUPPLY BENEATH SINK WITH 1/2 TURN STOP VALVE.
- WATER FILTER:** PROVIDE KEURIG OMNIPURE KQ8 (Q5484) COMPLETE FILTER KIT OR EQUAL TO SUPPLY COFFEE-MAKER. FLOW RATE: 5GPM, 1250 GALLONS OR 6 MONTHS, 125PSI MAX, 35-100F 8" x 2.5", NSF CERTIFIED TO ANSI/NSF STANDARD 42.

## PLUMBING PIPING MATERIAL & NOTES

### DOMESTIC WATER PIPING

- DOMESTIC WATER PIPING:** ASTM B 88, TYPES L, WATER TUBE, DRAWN TEMPER, 95-5 LEADLESS SOLDER OR PRESS FITTINGS. PRESS FITTINGS SHALL BE NIBCO OR EQUAL SUITABLE FOR USE IN PLUMBING OR MECHANICAL APPLICATIONS MAXIMUM OPERATING PRESSURE OF 300 PSI. CONTRACTOR SHALL INSURE TOOLS AND JAWS USED ARE COMPATIBLE FOR MATERIAL.
- DOMESTIC WATER PIPE INSULATION:** ARMACELL IMCOA W SS OR EQUAL. SEE BELOW FOR DIMENSIONS.
- ICE-MAKER AND COFFEE MAKER TUBING:** TUBING SHALL BE LLDPE. FITTINGS SHALL BE NSF COMPLIANT HIGH DENSITY POLYPROPYLENE. ISOLATION VALVE SHALL BE JOHN GUEST POLYPROPYLENE BALL VALVE PPSV040808W - 3/8" TUBE OD X 3/8" TUBE OD OR EQUAL.
- DUAL SHUTOFF VALVE:** PROVIDE NEW 1/2" FIP x 3/8" OD COMP X 3/8" OD COMP DUAL SHUT-OFF VALVE, LEAD FREE (CHROME) OR APPROVED EQUAL.

DOMESTIC PIPING INSULATION SCHEDULE		
PIPING	PIPE SIZE	INSULATION THICKNESS
DOMESTIC HOT WATER	UP TO 1" ABOVE 1"	3/4" 1"
DOMESTIC COLD WATER	UP TO 1" ABOVE 1"	1/2" 1/2"

### WASTE AND VENT PIPING

- WASTE AND VENT:** SERVICE WT. CAST IRON WITH PUSH-ON RUBBER GASKETS OR NO-HUB PIPE WITH HUSKY HEAVY COUPLINGS FOR ABOVE GRADE PIPING.

### CONDENSATE DRAIN PIPING

- PVC VENT/DRAIN CAP WITH INSECT SCREEN:** 3/4" PVC PIPE MULTI-PURPOSE SVC-IS075 VENT AND DRAIN CAP OR EQUAL; 18 X 18 MESH 316 STAINLESS STEEL INSECT SCREEN; CEMENT WELD.

## TESTNG NOTES

- ALL NEW PIPING:** CONTRACTOR SHALL PRESSURE TEST NEW WORK FOR LEAKS, PATCH WHERE LEAKS ARE FOUND AND DISINFECT NEW PIPING SYSTEM PRIOR TO CONNECTING TO DISTRIBUTION WATER SUPPLY. PROVIDE REQUIRED VALVES FOR TESTING.

## GENERAL NOTES

- SAFETY:** CONTRACTOR IS RESPONSIBLE TO PROVIDE FOR THE SAFETY OF ITS WORKERS, AND THE PUBLIC AS PER ALL LOCAL, STATE, AND NATIONAL CODES AND REGULATIONS.
- GENERAL PROVISIONS:** THE CONTRACTOR SHALL PROVIDE ALL PLUMBING EQUIPMENT, PIPING, VALVES, AND ACCESSORY ITEMS AS SPECIFIED AND AS REQUIRED FOR A COMPLETE INSTALLATION, INCLUDING HOT WATER AND COLD WATER ISOLATION VALVES FOR EACH PIECE OF EQUIPMENT OR FIXTURE.
- DEMOLITION:** REMOVE ABANDONED PIPING BACK TO MAIN OR RISER AND CAP. CAPPING AND PLUGGING OF PIPING SHALL BE DONE USING THE SAME MATERIAL AS THE PIPING. ALL DEMOLITION AND CONSTRUCTION MATERIAL DISPOSAL MUST BE IN ACCORDANCE WITH LOCAL, STATE AND FEDERAL REGULATIONS.
- FIELD COORDINATING EXACT LOCATIONS:** DO NOT SCALE DRAWINGS. USE WRITTEN DIMENSIONS ONLY. EXACT LOCATIONS OF PIPING IN FLOORS, WALLS, CEILINGS, AND CHASES SHALL BE COORDINATED WITH THE EXISTING CONDITIONS IN THE FIELD. CONTRACTOR SHALL BE RESPONSIBLE FOR VERIFYING SIZE AND LOCATION OF ALL EXISTING PIPING IN FIELD BEFORE SUBMITTING SHOP DRAWINGS OR COMMENCING WORK.
- COMPLIANCE:** ALL REGULATIONS, RULES, ETC., OF ALL STATE, COUNTY AND LOCAL GOVERNMENTS, AND ALL UTILITY AGENCIES SHALL BE FOLLOWED BY THE CONTRACTOR. ALL PLUMBING WORK SHALL BE DONE IN COMPLIANCE WITH NFPA, THE N.Y. STATE AND THE LOCAL PLUMBING CODES.
- LICENSES:** ALL WORK ON DOMESTIC AND GAS PIPING SYSTEM SHALL BE BY PLUMBER LICENSED IN WESTCHESTER COUNTY. A COPY OF ALL LICENSES SHALL BE SUBMITTED TO OWNER AND ALL FEES PAID.
- OTHER TRADES:** THIS WORK WILL BE BID CONCURRENTLY WITH ANOTHER CONTRACT. COORDINATE WITH WORK OF OTHER TRADES. VERIFY ELEVATIONS OF NEW PIPING PRIOR TO INSTALLATION. NOTIFY ENGINEER IMMEDIATELY IF ANY POSSIBLE CONFLICTS COULD OCCUR.
- HANGERS AND SUPPORTS:** PROVIDE SUFFICIENT CLEVIS TYPE HANGERS, SUPPORTS, RODS, BRACES, ETC. BY CDAEY OR EQUAL TO PROPERLY SUPPORT PIPING, INSTALL HANGERS OVER INSULATION.
- PENETRATIONS -** PROVIDE ALL PIPE OPENINGS THROUGH PARTITIONS WITH PIPE SLEEVES. FOR PIPES PENETRATING FIRE RATED PARTITIONS, THE SPACE BETWEEN THE PIPE AND THE SLEEVE SHALL BE SEALED WITH FIRE STOPPING MATERIAL.

IN CHARGE OF JAI PUNNOOSE, P.E.

CHECKED BY JAI PUNNOOSE, P.E.

MADE BY VINCENT LEONE, P.E.

PLUMBING LEGEND		
SYMBOL	ABBREV.	DESCRIPTION
	S,W	SANITARY, WASTE PIPING BELOW FLOOR
	V	VENT PIPING
	CW	COLD WATER PIPING
	HW	HOT WATER PIPING
	HWR	HOT WATER RETURN PIPING
		EXISTING PIPING
	C.T.E.	CONNECT TO EXISTING
		FLOW ARROW
		DROP
	BA	SHUT-OFF VALVE
		BREAK
		RISER
	CO	CLEANOUT
	CODP	CLEANOUT DECK PLATE
	FD/RD	FLOOR DRAIN/ROOF DRAIN
	ETR	EXISTING TO REMAIN
	VIF	VERIFY IN FIELD
	IW	INDIRECT WASTE
	CV	CHECK VALVE

WORK AREA  
1/64"=1'-0"

REVISION NUMBER	DATE	MADE BY	APP'D BY	REVISION
RECORD DRAWING CERTIFICATION				
<input type="checkbox"/> AS BUILT - CHANGES AS NOTED <input type="checkbox"/> AS BUILT - NO CHANGES				
CONTRACTOR		PROJECT COORDINATOR		
NAME SIGNATURE TITLE	DATE	NAME SIGNATURE TITLE	DATE	
WESTCHESTER COUNTY, NEW YORK DEPARTMENT OF PUBLIC WORKS AND TRANSPORTATION DIVISION OF ENGINEERING		SHEET NO. 23 OF 27		
INFRASTRUCTURE UPGRADES LABS AND RESEARCH VALHALLA CAMPUS, VALHALLA, NEW YORK PLUMBING PART PLANS		SCALE: AS SHOWN DATE: 10/28/2021 DPW FILE NO. 38-54-P-780 REV. NO. 0		