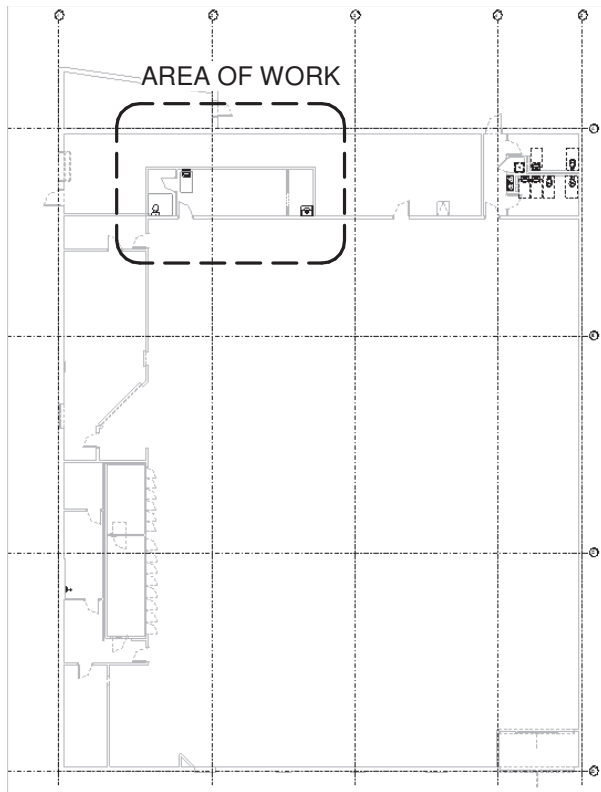


1 FLOOR PLAN - MECHANICAL
1/4" = 1'-0"



KEY PLAN

LEGEND

- SUPPLY 4-WAY AIR (UNLESS NOTED OTHERWISE)
- EXHAUST, RETURN OR TRANSFER AIR
- MANUAL DAMPER
- THERMOSTAT
- CFM SUPPLY AIR
- CFM RETURN AIR
- CFM EXHAUST AIR
- CONDENSING UNIT (ROOF MOUNTED)
- CUBIC FEET PER MINUTE
- EXHAUST FAN
- FAN COIL UNIT (CEILING MOUNTED)
- SUPPLY AIR DIFFUSER
- SUPPLY AIR GRILLE
- RETURN AIR GRILLE
- EXHAUST AIR GRILLE
- EAG
- ROOF TOP AIR CONDITIONING UNIT
- AIR TRANSFER
- NEW CONNECTION

TEST & BALANCE NOTES

- BALANCE NEW SUPPLY DIFFUSERS AND RETURN GRILLES TO AIR FLOWS SHOWN ON DRAWINGS, REDISTRIBUTE ADDITIONAL AIR TO EXISTING DIFFUSERS OF AFFECTED RTU.
- ADJUST AFFECTED RTU TO PROVIDE APPROPRIATE OUTDOOR AIR, ADJUST EXISTING DIFFUSERS AS REQUIRED FOR NEW VOLUMES.
- BALANCE TOILET EXHAUST FAN TO AIRFLOW SHOWN ON DRAWING/SCHEDULE.
- PROVIDE HEATING AND COOLING CAPABILITY OF DUCTLESS SPLIT SYSTEM IN NORMAL OPERATION.
- SUBMIT TEST AND BALANCE REPORT TO WAG ENGINEERING FOR REVIEW.

MECHANICAL KEYED NOTES

KEY VALUE	KEYNOTE TEXT
23 10 01	CONNECT NEW 8"Ø SUPPLY DUCT TO EXISTING 14"x10" SUPPLY DUCT FROM EXISTING ROOFTOP UNIT RTU-5 TO PROVIDE CODE VENTILATION AIR TO NEW LAB CORP SPACE.
23 10 02	ROUTE 6"Ø EXHAUST DUCT UP THRU ROOF. TERMINATE WITH ROOF CAP.
23 10 03	EXTEND CONDENSATE DRAIN FROM NEW FAN COIL UNITS TO NEW FUNNEL FLOOR DRAIN LOCATED IN WORK SINK CABINET WITH AIR GAP.
23 10 04	REFRIGERANT PIPING UP THRU PORTAL TO ROOF MOUNTED CONDENSING UNIT, SEE ARCHITECTURAL DRAWINGS FOR PORTAL.
23 10 05	THE CONDENSING UNIT IS TO BE PLACED ON A BALLASTED ISOLATION MAT AT ROOF LEVEL. NO FLASHED CURBS ARE TO BE INSTALLED.
23 10 06	EXISTING ROOFTOP UNIT RTU-5 OUTSIDE AIR SET TO 260 CFM.
23 10 07	BALANCE THE EXISTING DIFFUSER/GRILLE TO CFM SHOWN.
23 10 08	TRANSFER GRILLE SHALL BE LOCATED IN STOCK AREA MINIMUM 10'-0" ABOVE FINISHED FLOOR.
23 10 09	RELOCATE EXISTING SUPPLY AIR DIFFUSER. FIELD VERIFY EXACT NECK SIZE OF EXISTING GRILLE. BALANCE TO CFM SHOWN.

NOTES

- GENERAL:**
 - SPECIFICATION SECTIONS 01 11 00 SUMMARY OF WORK, 20 05 00 COMMON WORK RESULTS FOR MECHANICAL, 20 07 00 MECHANICAL INSULATION, SECTION 23 30 00 HVAC AIR DISTRIBUTION, SECTION 23 80 00 DECENTRALIZED HVAC EQUIPMENT AND 26 05 00 COMMON WORK RESULTS FOR ELECTRICAL SHALL BE CONSIDERED A PART OF THIS WORK.**
- EQUIPMENT:**
 - ALL REMOTE CONDENSING UNITS ARE LOCATED ON THE ROOF AND ARE SHOWN DOTTED ON FLOOR PLAN.
 - SEE ARCHITECTURAL DRAWINGS FOR HVAC EQUIPMENT ROOF CURBS, EXHAUST FAN ROOF CURBS, GAS PIPE PORTALS, AND CONDENSATE DRAIN PORTALS (IF APPLICABLE). HVAC EQUIPMENT ROOF CURBS AND EXHAUST FAN ROOF CURBS ARE FURNISHED BY MECHANICAL CONTRACTOR.
 - INSTALL HVAC EQUIPMENT LEVEL ON ROOF CURBS.
 - OUTSIDE AIR INTAKE ON ROOF SHALL BE LOCATED A MINIMUM OF 15'-0" AWAY FROM ANY EXHAUST DUCT, BLOWER DISCHARGE, PLUMBING VENTS, ETC.
 - HVAC UNITS SHALL INCLUDE FLEXIBLE CONNECTIONS.
 - ALL OUTSIDE AIR DAMPERS FOR UNITS SHALL BE MOTORIZED AND HAVE A LOW LEAKAGE GASKET.
 - PROVIDE LAMINATED BAKELITE NAME PLATES ON EACH HVAC UNIT AND LOCATE NEXT TO UNIT NAME (E.G., EF-1, ETC.). IN ADDITION CONTRACTOR TO APPLY WALGREENS PROVIDED ASSET TAG AS WELL AS ALL REQUIRED INFORMATION (ASSET TAG NUMBER, SERIAL NUMBER, MAKE, MODEL, YEAR OF INSTALL.) A/E TEAM TO PROVIDE INFORMATION TO WALGREENS POINT OF CONTACT.
 - START UP AND TEST EQUIPMENT PER MANUFACTURER RECOMMENDATIONS.
- CONDENSATE DRAIN SYSTEM:**
 - LOCATE CONDENSATE DRAIN PIPING SO IT WILL NOT INTERFERE WITH THE REQUIRED ACCESS TO THE HVAC UNIT..
- AIR DISTRIBUTION:**
 - DUCTWORK SHALL BE GALVANIZED STEEL METAL PER SMACNA. REFER TO SPECIFICATION 23 30 00. INTERNAL LINING IS NOT PERMITTED IN THE SUPPLY DUCTWORK.
 - ALL VOLUME DAMPERS SHALL BE FLAGGED WITH STREAMERS FOR EASY IDENTIFICATION ESPECIALLY WHEN COVERED WITH INSULATION.
 - AIR BALANCING: BALANCE AIR TO INDICATED QUANTITIES WITHIN A TOLERANCE OF PLUS OR MINUS 10%. ADJUST SUPPLY AIR GRILLE BLADES TO MEET COMFORT CONDITIONS IN WORKING AREA PER MANUFACTURER'S RECOMMENDATIONS.
- INSULATION**
 - INSULATE DUCTWORK AND PIPING PER SPECIFICATION 20 07 00.
 - INSULATE ALL CONDENSATE DRAIN PIPING INSIDE THE BUILDING TO INCLUDE MAINS, BRANCHES AND VENTS. INSULATION TO MEET SPECIFICATION 20 07 00 REQUIREMENTS.
- REFRIGERATION PIPING**
 - PROVIDE AND INSTALL PRE-INSULATED REFRIGERATION PIPING, MATERIAL AND PRESSURE RATING PER MANUFACTURERS RECOMMENDATIONS. PURGE ANY BRAZED CONNECTIONS WITH NITROGEN.
 - PRESSURE TEST SYSTEM AND INSTALL REFRIGERANT PER MANUFACTURER RECOMMENDATIONS, LOCAL CODES, AND LEAK TEST STANDARDS LAID OUT IN ASME 31.5, WHICHEVER IS MORE STRINGENT. IN ADDITION TO PRESSURE TEST, REQUIRE SYSTEM TO HOLD AT DESIGN PRESSURE FOR MINIMUM 1 HR. PROVIDE WAG ENGINEERING NOTIFICATION OF PASS/FAIL.

DEMOLITION NOTES

- REMOVE AND DISPOSE OF EXISTING SUPPLY DIFFUSERS AND RETURN GRILLES THAT WILL NOT BE REUSED OR RELOCATED AS NEEDED PER PLAN.
- REMOVE BRANCH DUCTS THAT WILL NOT BE REUSED, ALONG WITH ALL ASSOCIATED HANGERS AND DAMPERS BACK TO SUPPLY/RETURN MAINS PER NEW LAYOUT. CAP OR PATCH, SEAL AND INSULATE AS REQUIRED.
- DISPOSE OF DEMOED MATERIALS IN ACCORDANCE WITH NATIONAL AND LOCAL CODES.
- REMOVE AND KEEP STOCKROOM UNIT HEATERS FOR RELOCATION AS NEEDED PER PLAN.

Walgreens
Store Planning and Design Development
106 Wilmet Road
Deerfield, IL 60015-5105

I HEREBY CERTIFY THAT
THIS PLAN AND SPECIFICATIONS
WAS PREPARED BY ME OR
UNDER MY DIRECT SUPERVISION AND THAT I,
ENGINEER OR ARCHITECT OR
ENGINEER, UNDER THE
NEW YORK AS SIGNED
BY MY HAND AND SEAL.



DATE: 1/22/21 EXP.: 9/30/22



LINGLE DESIGN GROUP INC.
158 W. MAIN ST.
LENA, IL 61045
815.269.9155
1764 BLAKE ST.
DENVER, CO 80202
303.974.5873
WWW.LINGLEDESIGN.COM

ISSUE FOR PERMIT		DESCRIPTION	
DATE	BY	NO.	REVISIONS
01/26/21			

MECHANICAL FLOOR PLAN

STORE # 02758
WALGREENS
134 WIDLEY STREET
TARRYTOWN, NEW YORK

PRINT TIME STAMP:
1/22/2021 1:16:18 PM
DRAWN BY:
D. LYASKOV
DATE: 01/26/21
REVIEWED:
J. THOMAS

M111

WCW
Engineers, Inc.
760 Creel Drive
Wood Dale, Illinois 60191
Tel. 630/595-8800
Fax 630/595-8818
www.WCWengineers.com