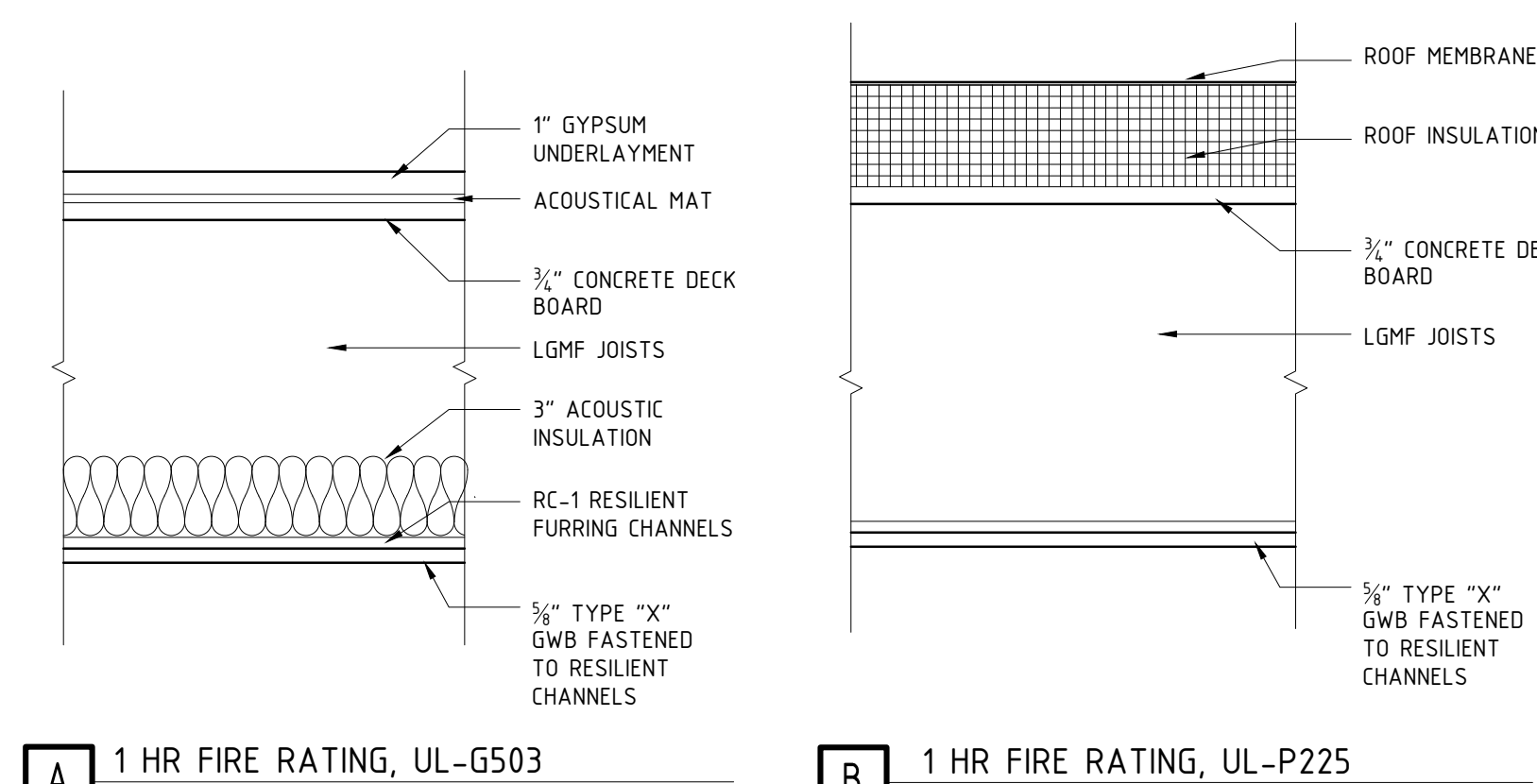
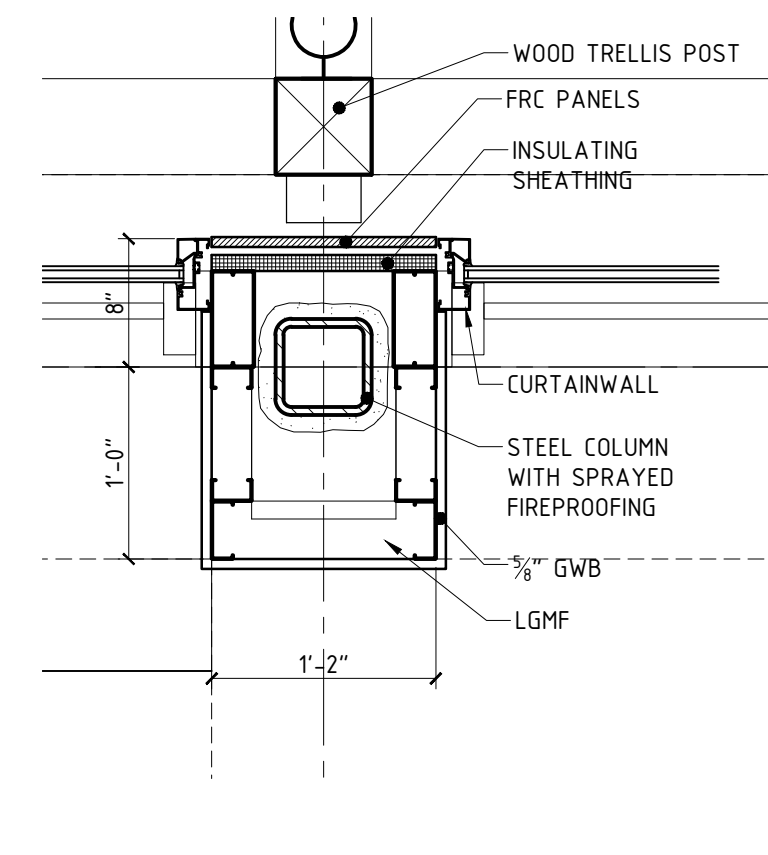
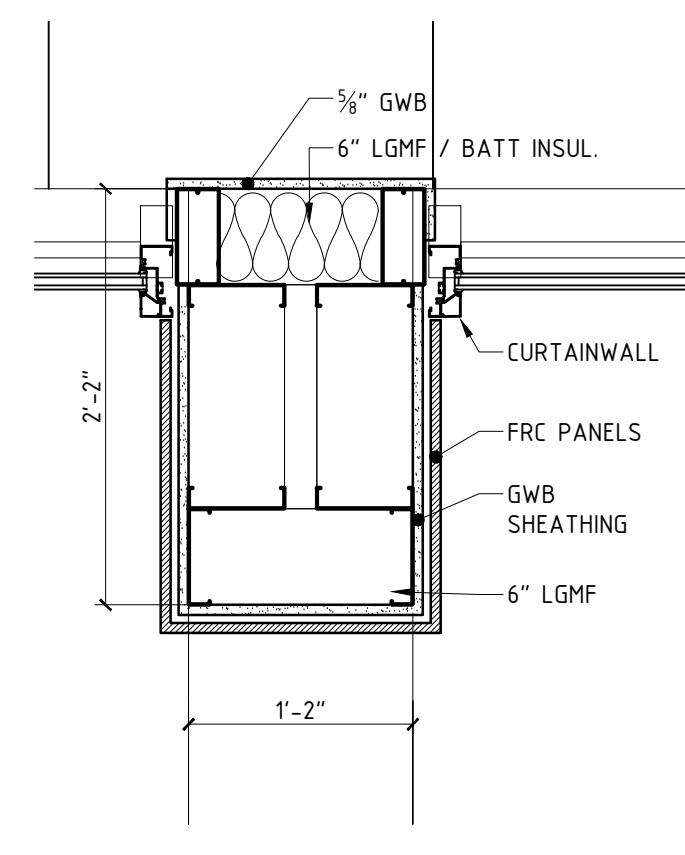
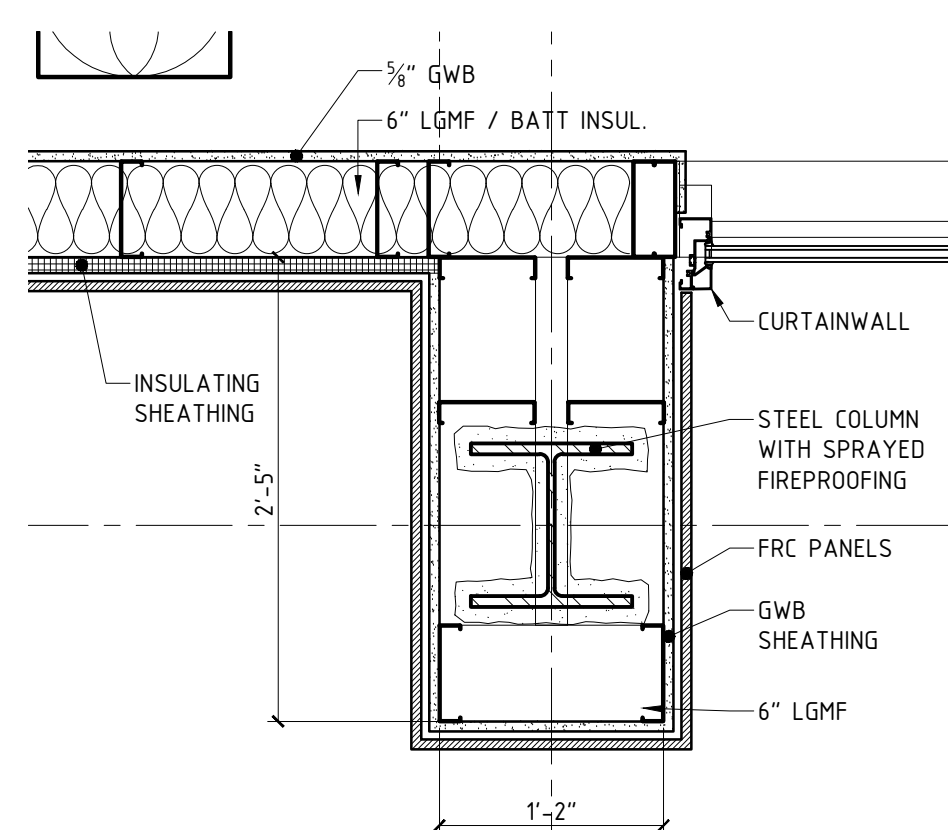
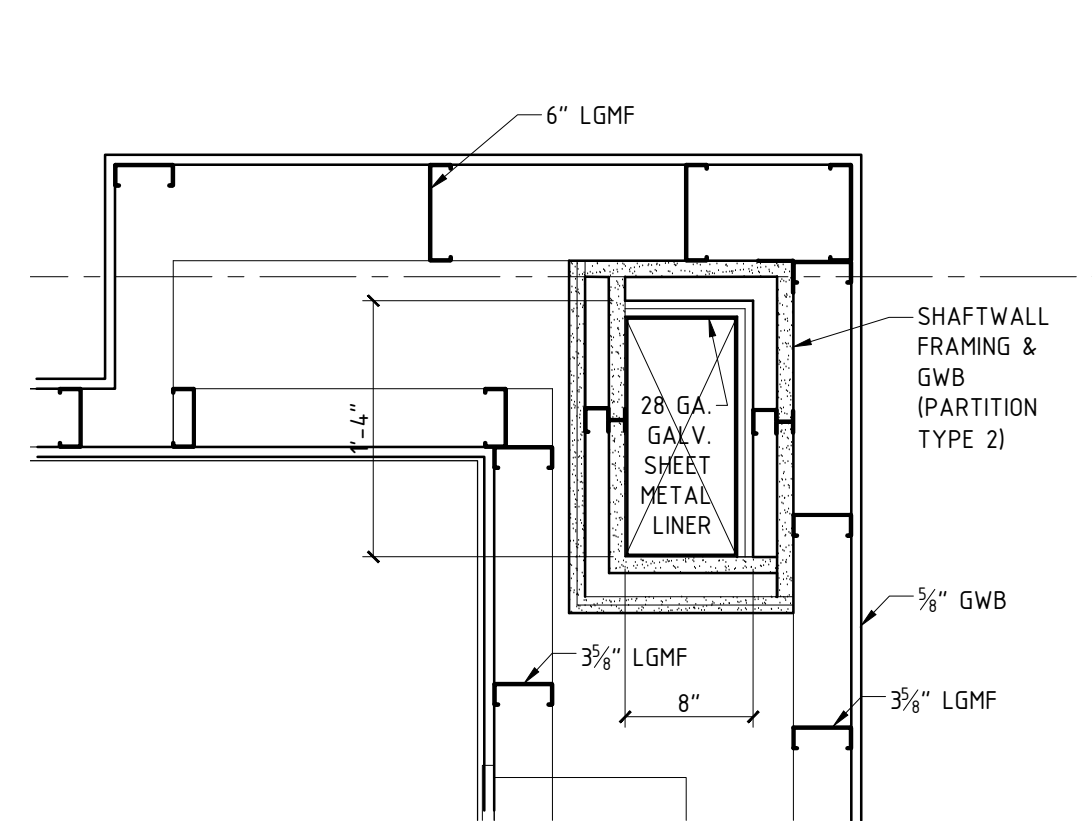


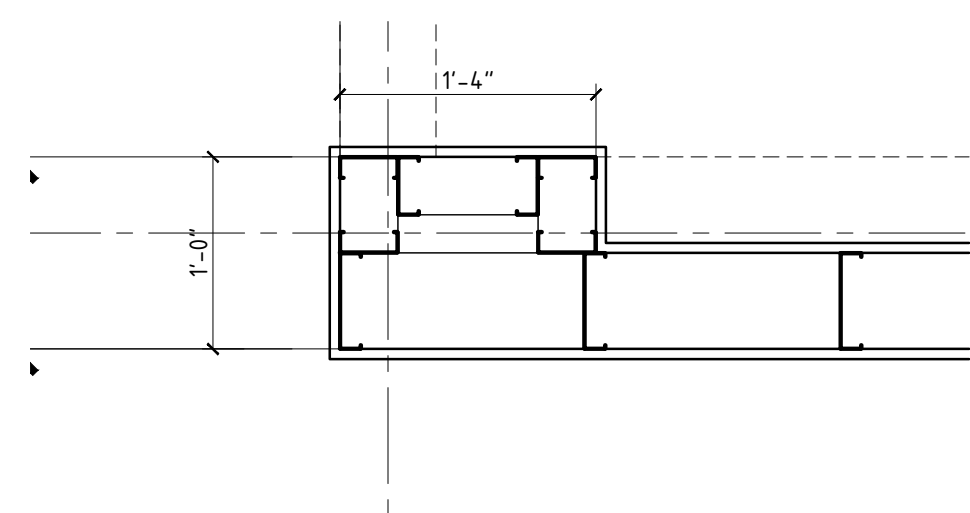
11 PARTITION LEGEND (PLAN DETAILS)

A603 1 1/2" = 1'-0"



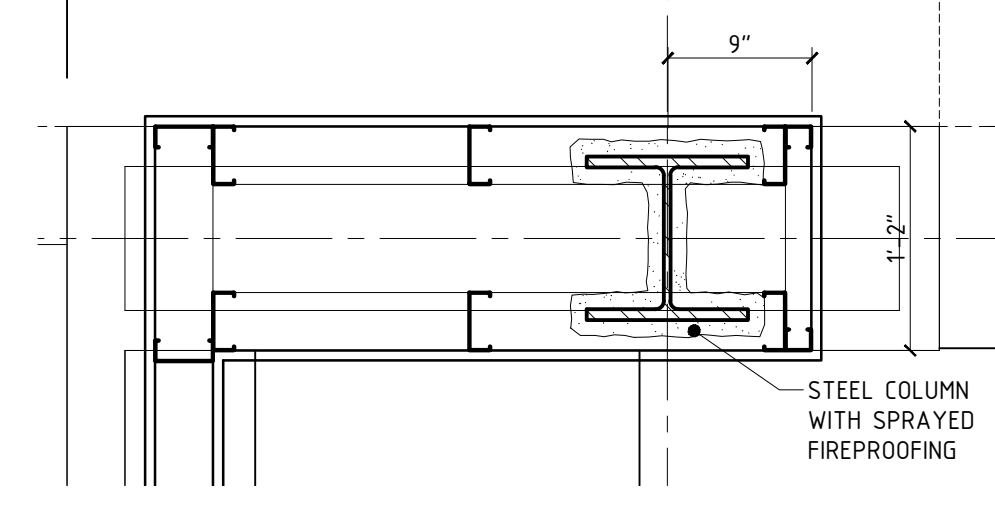
12 PLAN DETAIL

A603 1" = 1'-0"



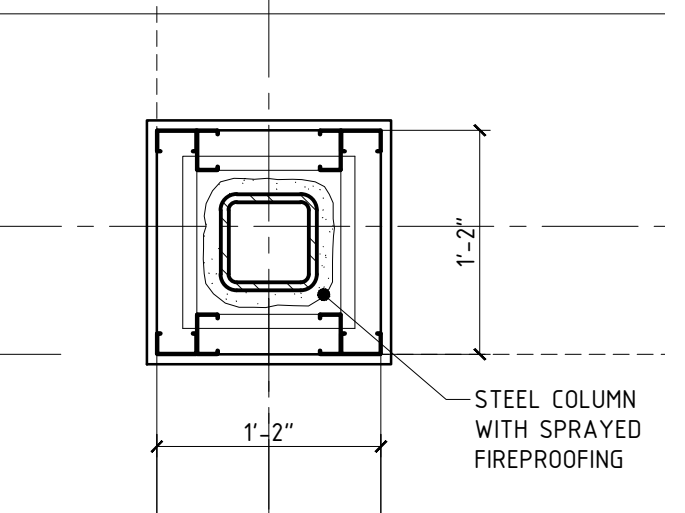
22 PLAN DETAIL

A603 1" = 1'-0"



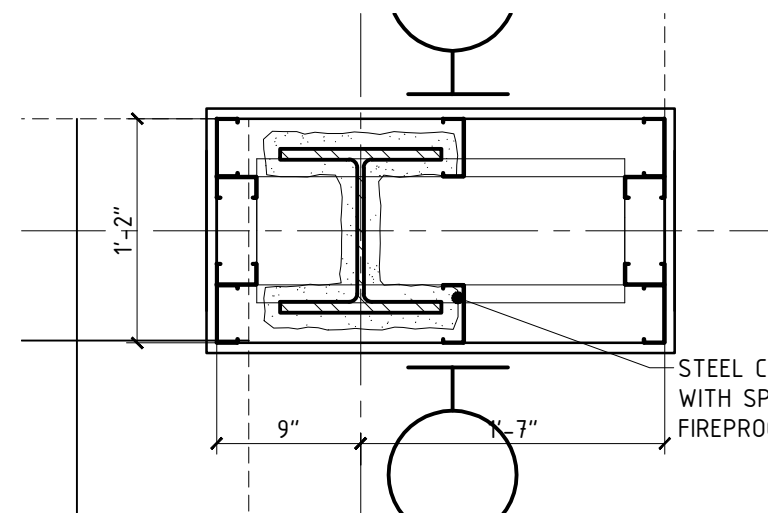
32 PLAN DETAIL

A603 1" = 1'-0"



42 PLAN DETAIL

A603 1" = 1'-0"



52 FLOOR/CEILING TYPES

A603 1 1/2" = 1'-0"

THESE NOTES APPLY TO ALL PARTITIONS AND CEILING ASSEMBLIES WITH ACOUSTIC (STC) RATING INDICATED ON PARTITION LEGEND.

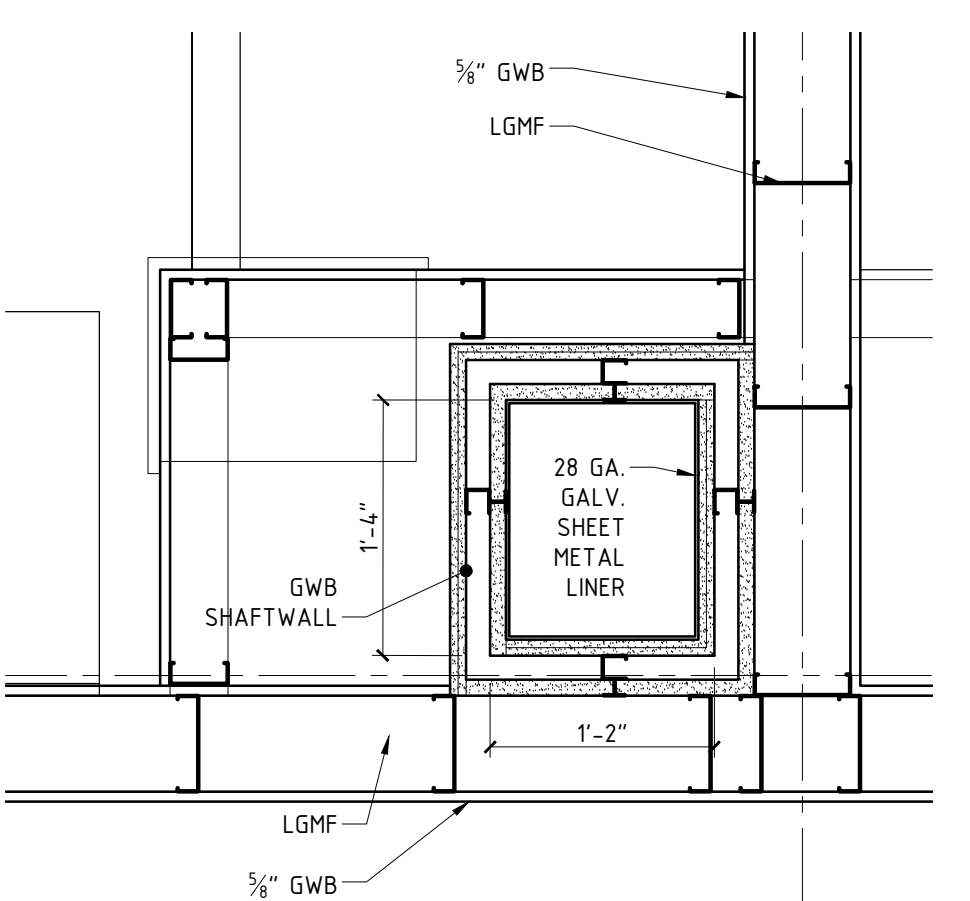
- GYPSUM BOARD ASSEMBLIES SHALL BE AIRTIGHT. HAIRLINE CRACKS AND HOLES ARE NOT ALLOWED.
- RECESSED WALL FIXTURES SUCH AS CABINETS, OUTLETS, LIGHTS, AND OTHER ITEMS WHICH PENETRATE THE GYPSUM BOARD SURFACE SHALL NOT BE LOCATED BACK TO BACK IN THE SAME STUD CAVITY. ANY OPENINGS CUT FOR SUCH FIXTURES SHALL BE CAREFULLY CUT TO SIZE AND CAULKED.
- THE ENTIRE PERIMETER OF A SOUND INSULATING ASSEMBLY SHALL BE MADE AIRTIGHT TO PREVENT SOUND FROM "FLANKING".
- AN ACOUSTICAL SEALANT SHALL BE USED TO SEAL BETWEEN THE SOUND INSULATING ASSEMBLY AND ALL DISSIMILAR OR ABUTTING ASSEMBLIES.
- ASTM RECOMMENDED PRACTICES E-497 SHALL BE FOLLOWED FOR SOUND CONTROL.
- WHERE CALLED FOR OR SHOWN ON DRAWINGS, ACOUSTICAL INSULATION SHALL COMPLETELY FILL WALL CAVITY AND SHALL BE SUPPORTED TO PREVENT SAGGING OR SETTLING. CUT AND FIT TIGHTLY AROUND OBSTRUCTIONS SUCH AS WIRING AND PIPING. INSULATION MUST BE INSPECTED BY OWNER'S REPRESENTATIVE PRIOR TO COVERING WITH FINISH MATERIAL. ANY WALLS COVERED PRIOR TO INSPECTION ARE SUBJECT TO REMOVAL OF SUCH FINISH FOR INSPECTION AT NO COST TO OWNER.

- GYPSUM BOARD USED IN THE FOLLOWING LOCATIONS SHALL HAVE PAPERLESS FACINGS AND SHALL BE RATED FOR 0 MOLD PROPAGATION:
11. SWIMMING POOL ROOM;
12. EQUIPMENT ROOM, TOILET ROOM, AND VESTIBULE IN SWIMMING POOL SUITE;
13. WATER SERVICE ENTRANCE ROOM;
14. SHAFTS.
- IN ROOMS LISTED IN (12) ABOVE, PROVIDE FSK VAPOR RETARDER ON INTERIOR SIDE OF ALL WALLS AND CEILINGS. TAPE AND SEAL ALL JOINTS AND PENETRATIONS IN VAPOR RETARDER WITH PRODUCTS RECOMMENDED BY FSK MANUFACTURER.
- USE MOISTURE RESISTANT GYPSUM BOARD IN GUEST BATHROOMS, PUBLIC TOILET ROOMS, FOOD SERVICE AREAS, AND EXTERIOR VESTIBULES.
- EXTEND ALL WALL ELEMENTS (GWB, SOUND BATT, ETC) UP TO UNDERSIDE OF DECK OR SHEATHING OF FLOOR ABOVE.
- SEAL PERIMETER OF ELECTRICAL DEVICE BOXES. ADD STUDS IF REQUIRED FOR RECEPTACLE BOX SEPARATION.
- STAGGER JOINTS IN ADJACENT COURSES AND LAYERS OF GYPSUM BOARD.
- STUDS ARE SHOWN FOR STANDARD CONDITIONS. GC TO VERIFY METAL STUD SIZES AND GAUGE WITH METAL STUD SUPPLIER PER SPECIFICATIONS PRIOR TO CONSTRUCTION. CHANGE ACCORDINGLY AT NO ADDITIONAL CHARGE TO OWNER.
- CORRIDOR WALLS, SMOKE STOP WALLS, HORIZONTAL EXIT WALLS, EXIT ENCLOSURES AND FIRE WALLS SHALL BE EFFECTIVELY AND PERMANENTLY IDENTIFIED WITH SIGNS OR STENCILING IN A MANNER ACCEPTABLE TO THE AUTHORITY HAVING JURISDICTION. SUCH IDENTIFICATION SHALL BE ABOVE A DECORATIVE CEILING AND IN CONCEALED SPACES. SUGGESTED WORDING: "FIRE/ SMOKE BARRIER PROTECT ALL OPENINGS".
- G.C. TO PROVIDE WOOD BLOCKING OR EQUAL SOLID ATTACHMENT MATERIAL FOR ATTACHMENT OF ALL FITTINGS, FIXTURES AND ACCESSORIES.
- THE DEVICE BOXES FOR POWER, LIGHTING, AND ALL SPECIAL SYSTEMS THAT PENETRATE THE MEMBRANE OF A FIRE PARTITION SHALL HAVE A MIN. 24" HORIZONTAL SEPARATION BETWEEN BOXES ON OPPOSITE SIDES OF WALL. WHERE IT IS NOT POSSIBLE TO MAINTAIN A 24" SEPARATION, UTILIZE FIRE-RATED PUTTY PADS ON BOTH BOXES. HORIZONTAL SEPARATION BETWEEN BOXES ON OPPOSITE SIDES OF WALL MAY BE REDUCED TO 7" BUT MUST BE SEPARATED BY A STUD.
- ALL PENETRATIONS THROUGH FIRE RATED WALLS AND FLOORS AND SOUND RATED WALLS AND FLOORS MUST BE SEALED WITH AN APPROVED UL ASSEMBLY FOR PENETRATIONS. ALL THROUGH WALL & FLOOR PIPE & DUCT PENETRATIONS SHALL BE SEALED WITH FIRE RATED SEALANT HAVING AN F&T RATING AS FOLLOWS:

METALLIC PIPE & DUCT THROUGH RATED DRYWALL
F RATINGS = 1 & 2 HR, T RATING = 0
METALLIC PIPE THROUGH CONCRETE/CMU
F RATINGS = 2 HR, T RATING = 0
PLASTIC PIPE THROUGH RATED DRYWALL
F RATINGS = 2 HR, T RATING = 1 1/2 HR
PLASTIC PIPE THROUGH RATED CONCRETE/CMU
F RATINGS = 2 HR, T RATING = 1 1/2 HR

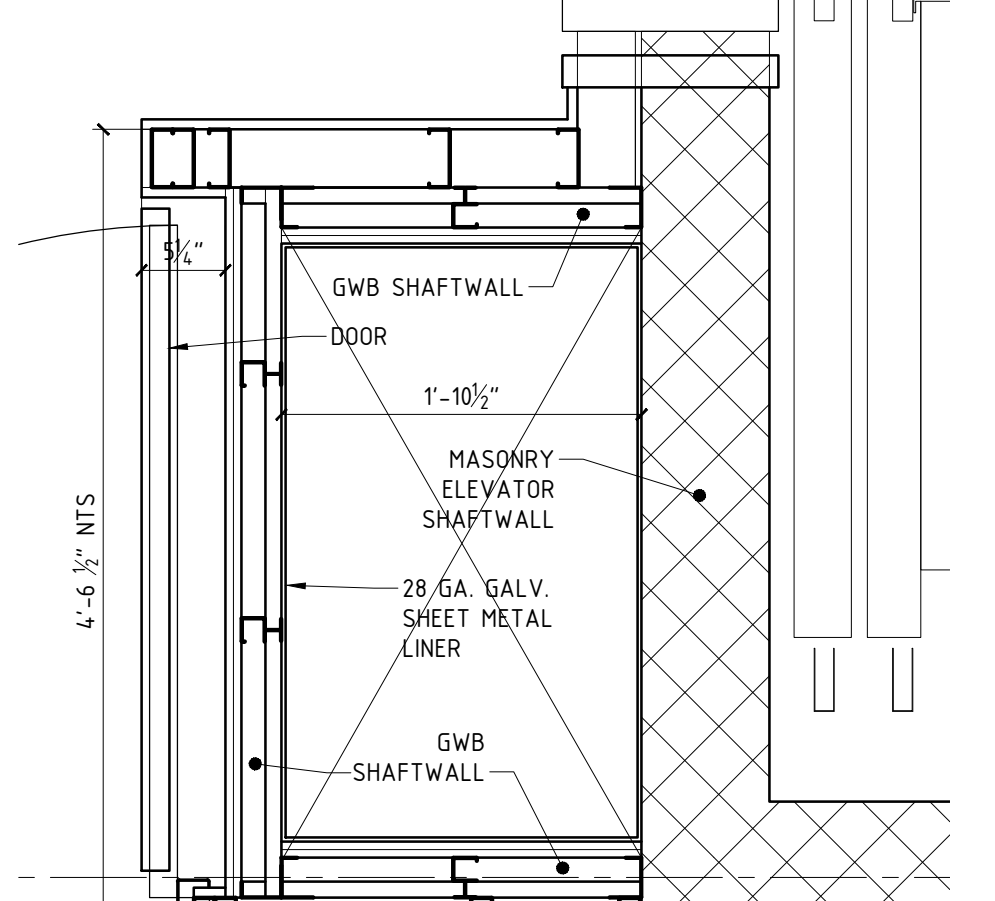
13 PLAN DETAIL

A603 1" = 1'-0"



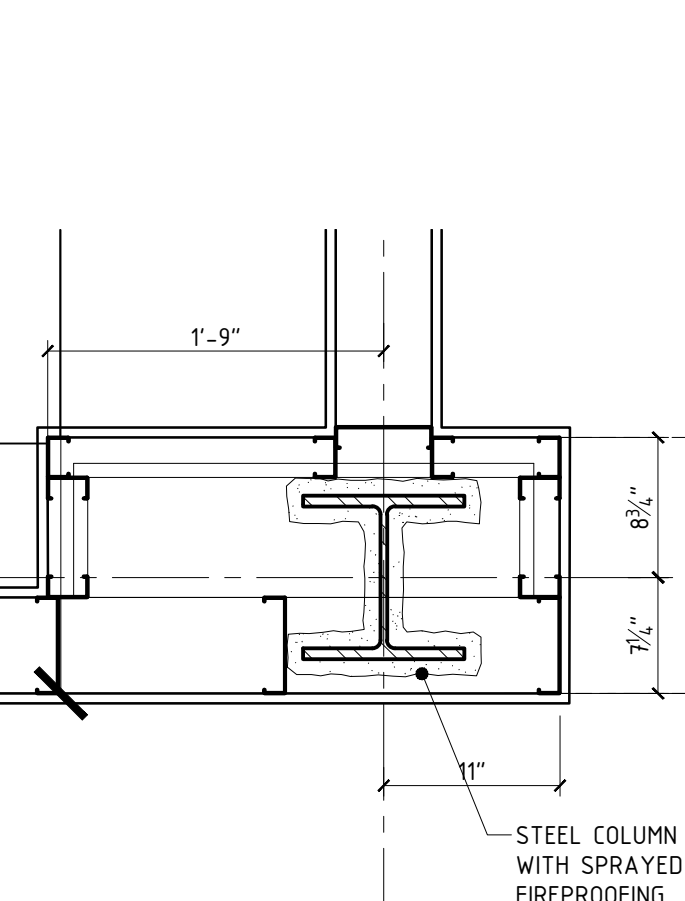
23 PLAN DETAIL

A603 1" = 1'-0"



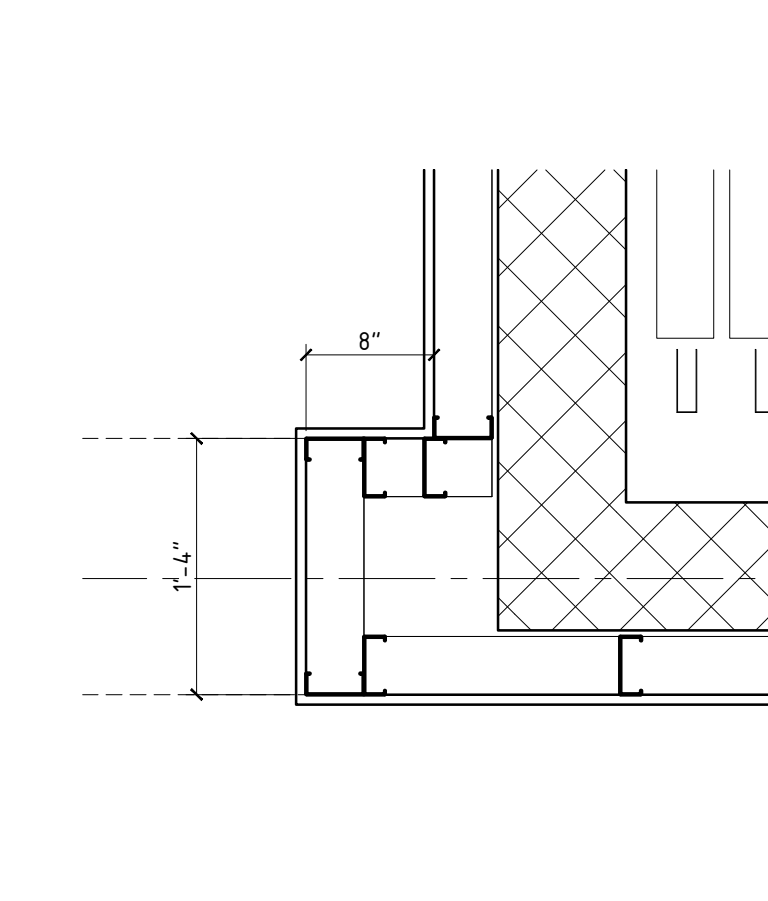
33 PLAN DETAIL

A603 1" = 1'-0"



43 PLAN DETAIL

A603 1" = 1'-0"



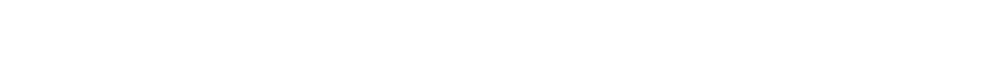
14 PLAN DETAIL - TYPICAL EXHAUST SHAFT

A603 1" = 1'-0"



24 PLAN DETAIL --- DOAU SHAFT

A603 1" = 1'-0"



34 PLAN DETAIL

A603 1" = 1'-0"



44 PLAN DETAIL

A603 1" = 1'-0"



54 ACOUSTIC PARTITION NOTES

A603

64 GENERAL PARTITION NOTES

A603

**A NEW 108-ROOM
COURTYARD BY
MARRIOTT
HOTEL & SUITES**

Turner Road
Woodbury, New York
location #12121

for

**RAINBOW
ENTERPRISES**

**4758 Highway 28
Cooperstown, NY**

REVISION DATES

UNAUTHORIZED ALTERATIONS OR ADDITIONS TO THIS DRAWING ARE A VIOLATION OF STATE EDUCATION LAW ARTICLES 145 AND 147.

THIS DRAWING IS AN INSTRUMENT OF SERVICE FOR RAINBOW ENTERPRISES, AND MAY NOT BE REPRODUCED WITHOUT THE EXPRESS CONSENT OF THE OWNER AND THE ARCHITECT

DRAWING TITLE

**PARTITIONS & CEILINGS
TYPICAL DETAILS & NOTES**

DATE
MARCH 1, 2021

PROJECT NUMBER
17971

SHEET NUMBER
A603