

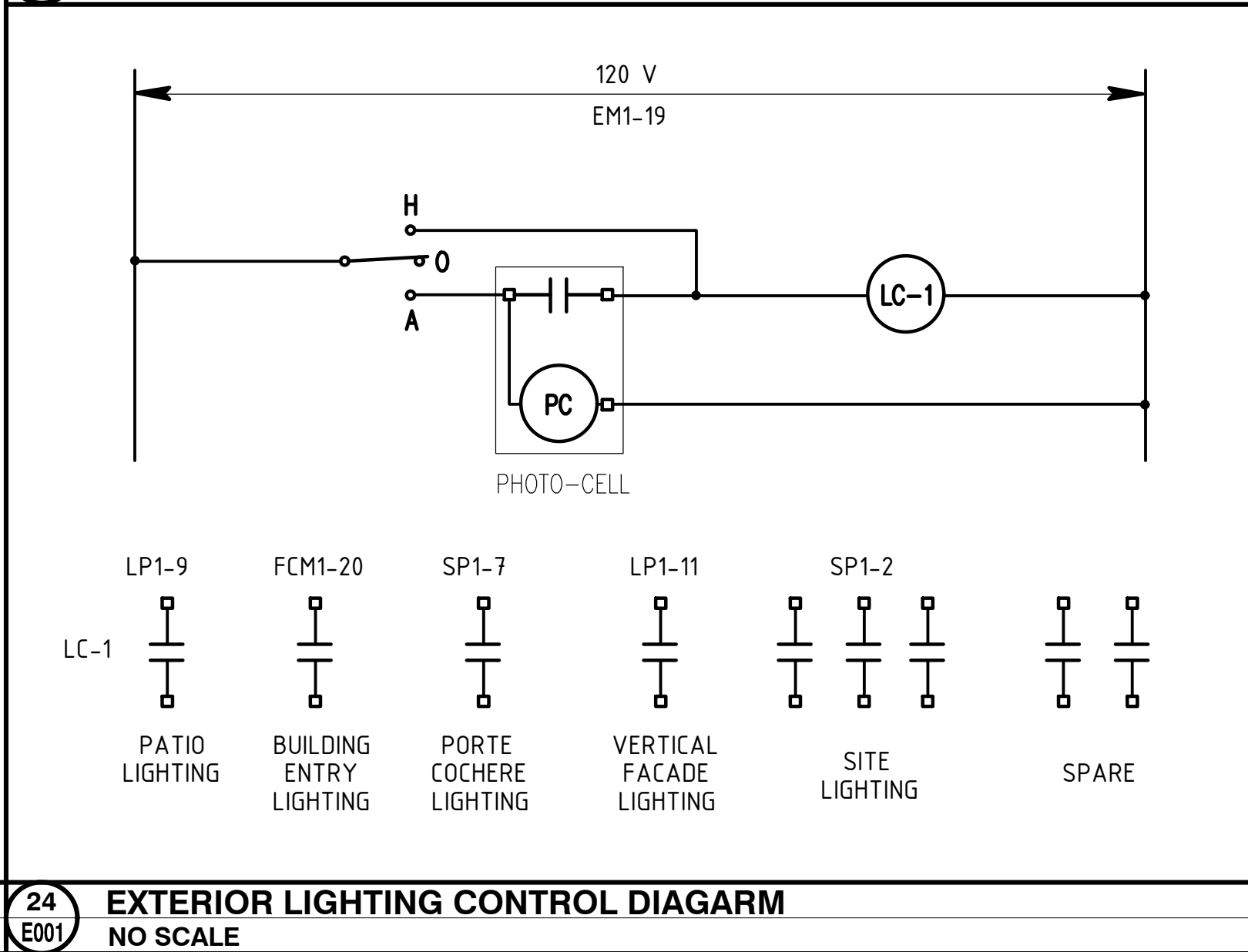
12
E001 **DEVICE MOUNTING DETAIL**
NO SCALE



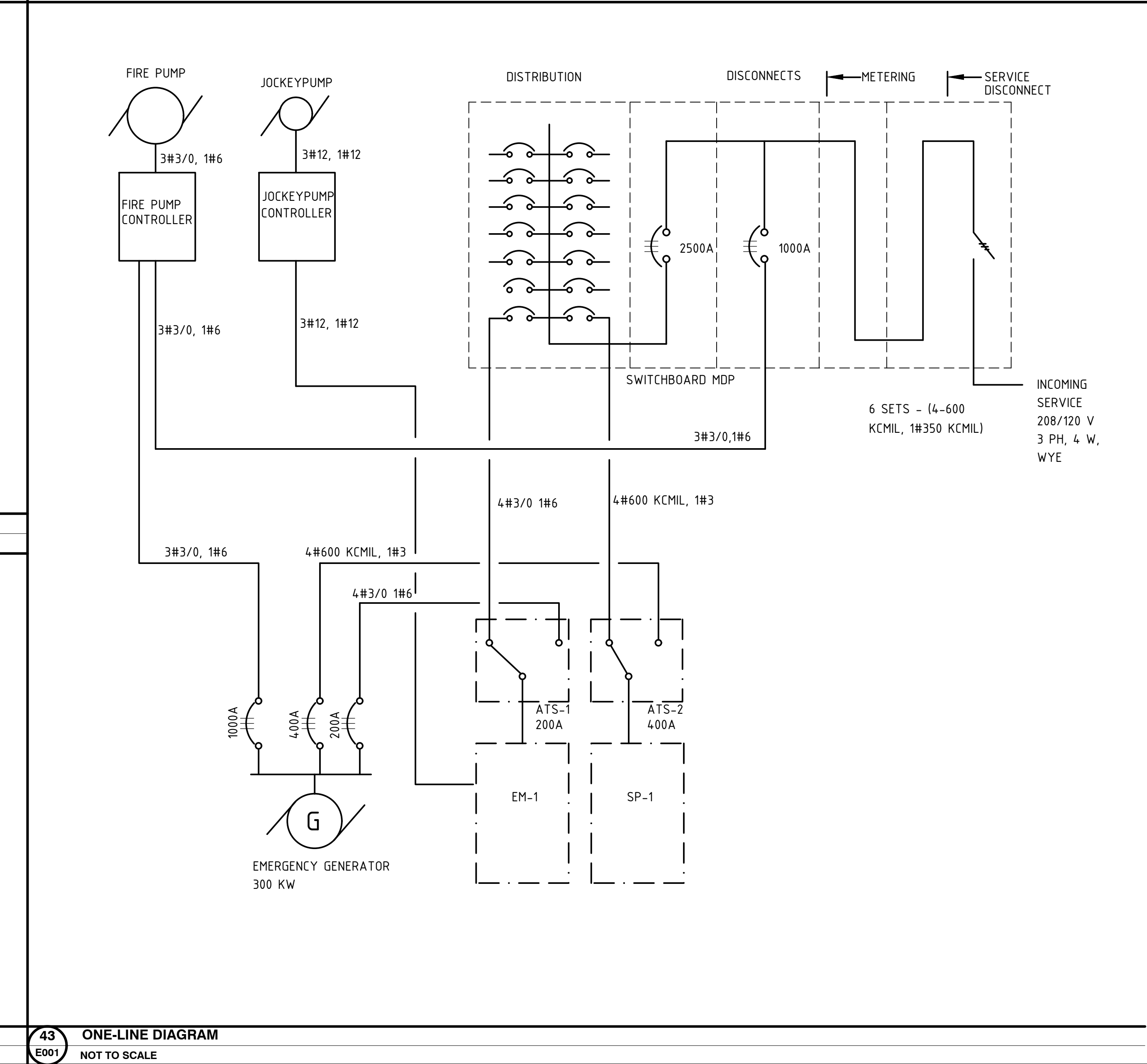
14
E001 **LEGEND**
NO SCALE

- ALL ELECTRICAL WORK SHALL CONFORM TO ALL STATE, LOCAL, AND NATIONAL ELECTRICAL CODES.
- ELECTRICAL CHARACTERISTICS SHALL BE VERIFIED WITH EQUIPMENT MANUFACTURER.
- ITEMS OF SPECIFIC MANUFACTURERS SHALL BE INSTALLED IN STRICT ACCORDANCE WITH MANUFACTURER'S PRINTED INSTRUCTIONS AND / OR MANUFACTURER'S REPRESENTATIVE'S DIRECTIONS.
- THE CONTRACTOR SHALL FIELD VERIFY ALL LOCATIONS AND DIMENSIONS SHOWN ON DRAWINGS AND SHALL COORDINATE LOCATIONS OF DEVICES WITH FF&E DOCUMENTS.
- ALL CONDUIT AND WIRING SCHEDULES SHALL BE VERIFIED BEFORE INSTALLATION.
- THE ELECTRICAL CONTRACTOR SHALL COORDINATE THE INSTALLATION OF ALL EQUIPMENT WITH OTHER CONTRACTORS.
- THE CONTRACTOR SHALL PROVIDE RACEWAYS, WIRING, AND CONNECTIONS FOR ALL CONTROL CIRCUITS AND INTERLOCK.
- ALL TAPS SHALL BE PROVIDED IN ACCORDANCE WITH THE NATIONAL ELECTRICAL CODE.
- ALL BRANCH CIRCUIT CONDUCTORS SHALL BE #12AWG OR LARGER UNLESS OTHERWISE SHOWN.
- ALL BRANCH CIRCUITS SHALL CONSIST OF 2 CONDUCTORS PLUS GROUND, UNLESS OTHERWISE SHOWN.
- ALL CIRCUITS SHALL HAVE INDIVIDUAL NEUTRALS. NO COMBINING OF NEUTRAL CONDUCTORS SHALL BE ALLOWED.
- ALL WORK SHALL CONFORM TO MARRIOTT STANDARDS, LATEST EDITIONS.
- PROVIDE ALL FIRE ALARM DEVICES IN GUEST ROOM AS INDICATED IN SPECIFICATIONS, INCLUDING ACCESSIBLE AND HANDICAPPED ROOMS. COORDINATE ALL DEVICE LOCATIONS IN GUEST ROOMS WITH FINAL FF&E LAYOUTS.
- ALL RECESSED FIXTURES SHALL BE INSTALLED WITH TENMAT 1 HOUR FIRE RATED COVERS UNLESS UL LABELED AS FIRE-RATED ENCLOSURES OR MOUNTED IN SUSPENDED CEILINGS BELOW FLOOR/CEILING GWB MEMBRANE.
- REFER TO SPECIFICATIONS FOR LIGHTING FIXTURE SCHEDULE

23
E001 **ELECTRICAL NOTES**
NO SCALE



24
E001 **EXTERIOR LIGHTING CONTROL DIAGARM**
NO SCALE



43
E001 **ONE-LINE DIAGRAM**
NOT TO SCALE