

One Larkin Center  
Yonkers, New York 10701  
Tel. 914 376-8008  
Fax 914 376-8621  
[jcarr@yonkerspublicschools.org](mailto:jcarr@yonkerspublicschools.org)

**Dr. Edwin M. Quezada**  
Superintendent of Schools

**John P. Carr, P.E.**  
Director of Facilities III  
School Facilities Management

### **Scope of Work for the “Replacement of Duplex Sump Pumps” at School 23**

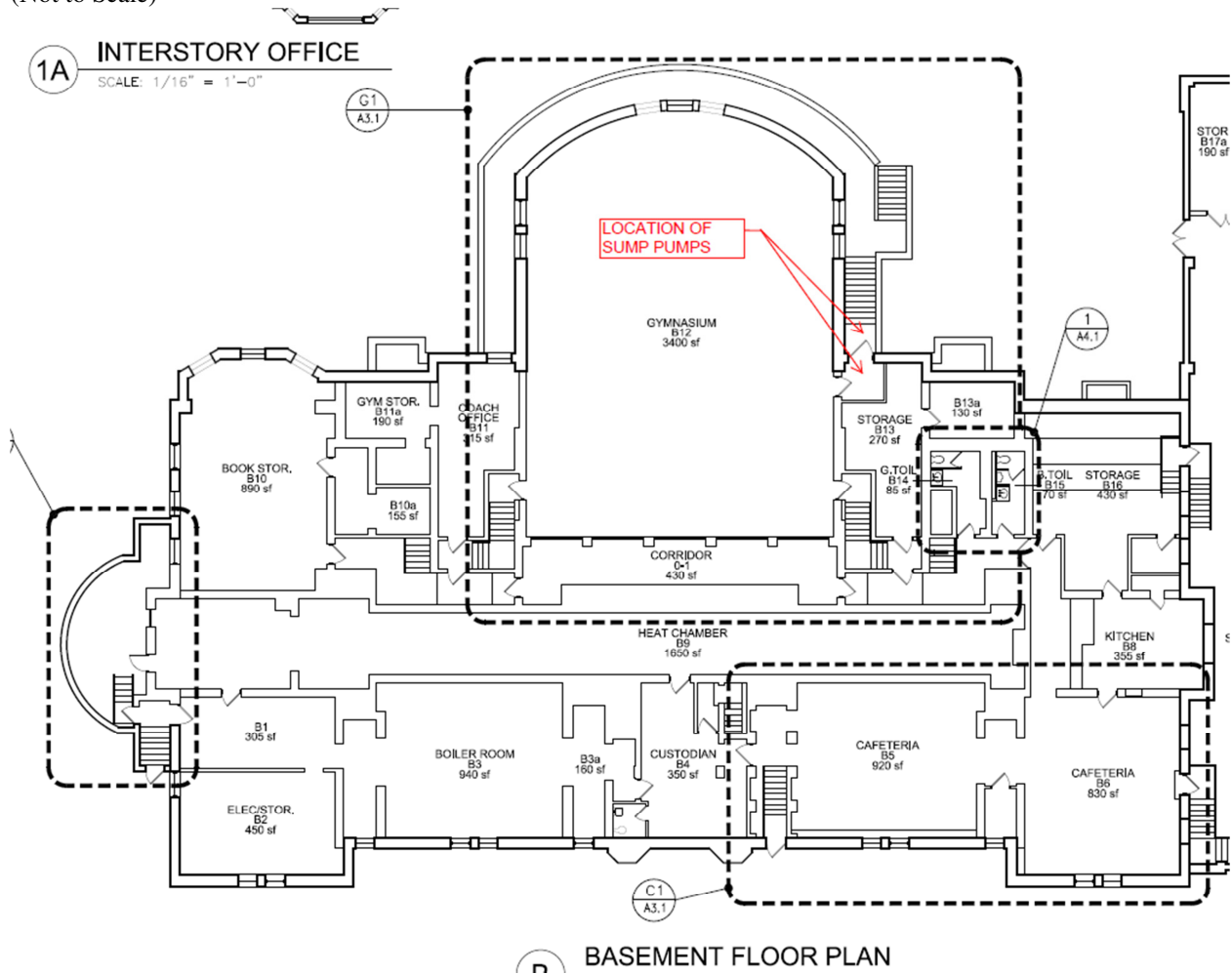
The contractor shall provide all labor & materials to perform the following:

1. Access and remove four (4) existing sump pumps (pump(s)).
  - a. Note: One (1) of the four (4) 208 volt pumps was replaced with 120-volt sump pump with self-contained float controls, this unit along with self-contained float controls to be removed along with 120-volt wiring.
2. Remove the remaining three (3) 208 volt pumps.
3. Furnish and install four (4) pumps (P-1, 2, 3 & 4). Manufactured by Stancor, Avenger Series model SSDS-75, 208 volt, 1 phase, 0.75 BHP, FLA 3.8 Amps, 40 gpm at 30 ft head.
4. Electrical: Replace the four (4) single pole breakers back at the power panel with two (2) 2 pole breakers.
5. The contractor shall coordinate with the District’s building controls contractor Energy Management of Facilities (914) 747-1007 to install the District’s Andover building controls, controllers and related electrical power wiring to provide the following controls for the four (4) sump pumps:
  - a. Furnish & install new building management system (BMS) local control panel (LCP) with new BMS building controller in custodian’s office.
  - b. Furnish and install 120 VAC feed for new LCP
  - c. Furnish and install new network CAT6 cable from LCP to network closet on 2nd floor
  - d. Coordinate with Yonkers City School IT for connection to district network
  - e. Furnish and install two (2) current sensors in each of the two (2) existing sump pump control panels
  - f. One (1) current sensor to monitor each of the four (4) pumps (total of four (4) current sensors)
  - g. Connect the new current sensor to the new BMS LCP for monitoring, runtime accumulation, and recording of the same
  - h. Connect the existing remote alarm “High Level” alarm from each of the two (2) existing sump pump control panels

- i. Furnish all required configuration, set up, programming, graphics, and alarms on the existing district BMS front-end system
6. Clean and water vacuum debris from bottom of sumps.
7. Contractor to provide all necessary tools to complete the work which may include providing temporary sumps and power to remove ground water from sumps while new pumps are being installed.
8. Provide all new stainless-steel access cover bolts and reattach covers, typical for two (2).
9. Contractor shall protect YPS property from damage while performing the above scope work.
10. Contractor shall remove all equipment slated to be removed and all garbage and debris on daily basis from the job site. Disposal shall be in accordance with Federal, state and county regulations.
11. Furnish all required labor for check, test, commissioning and one-year warranty.

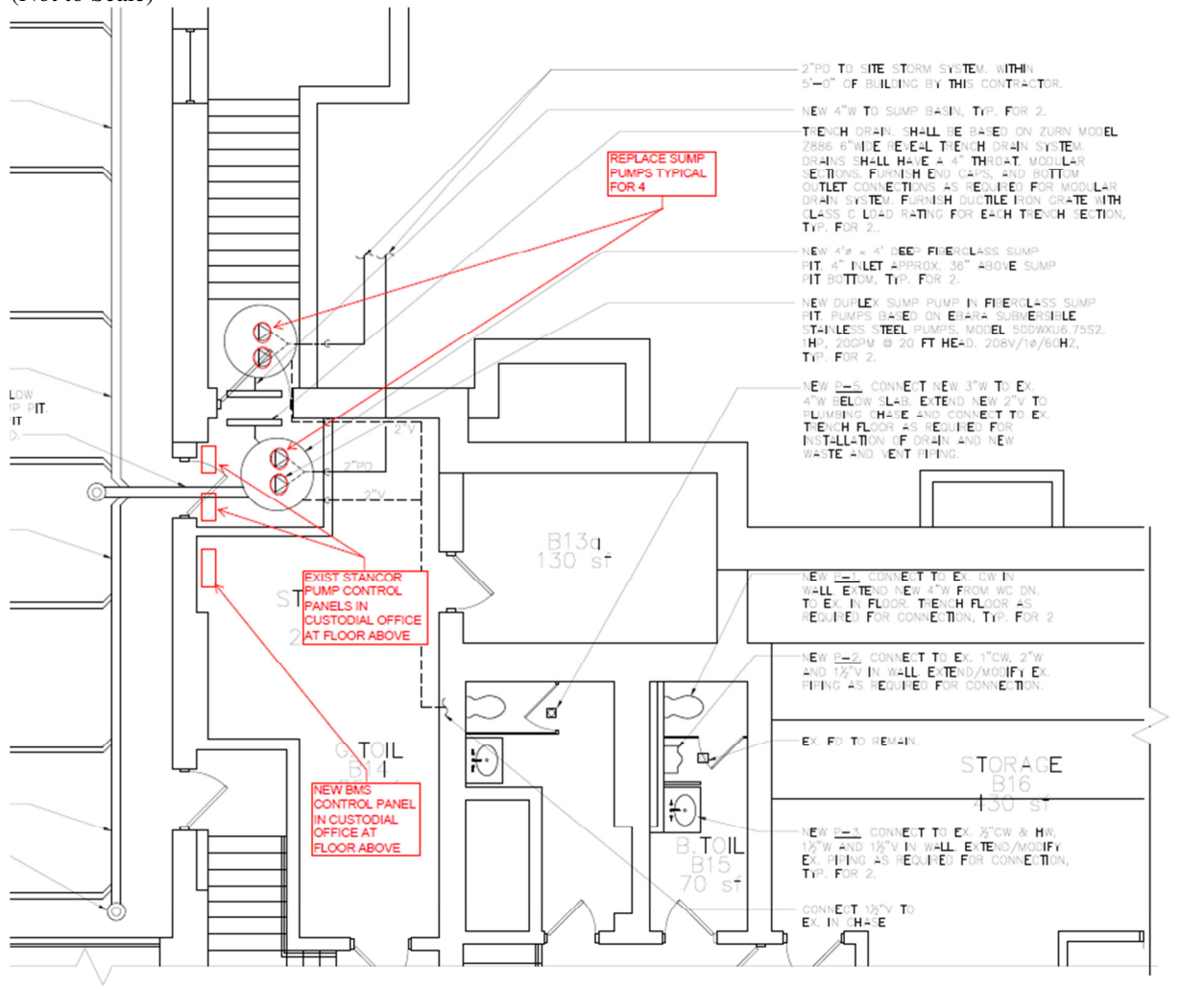
## **BASEMEN FLOOR PLAN**

(Not to Scale)



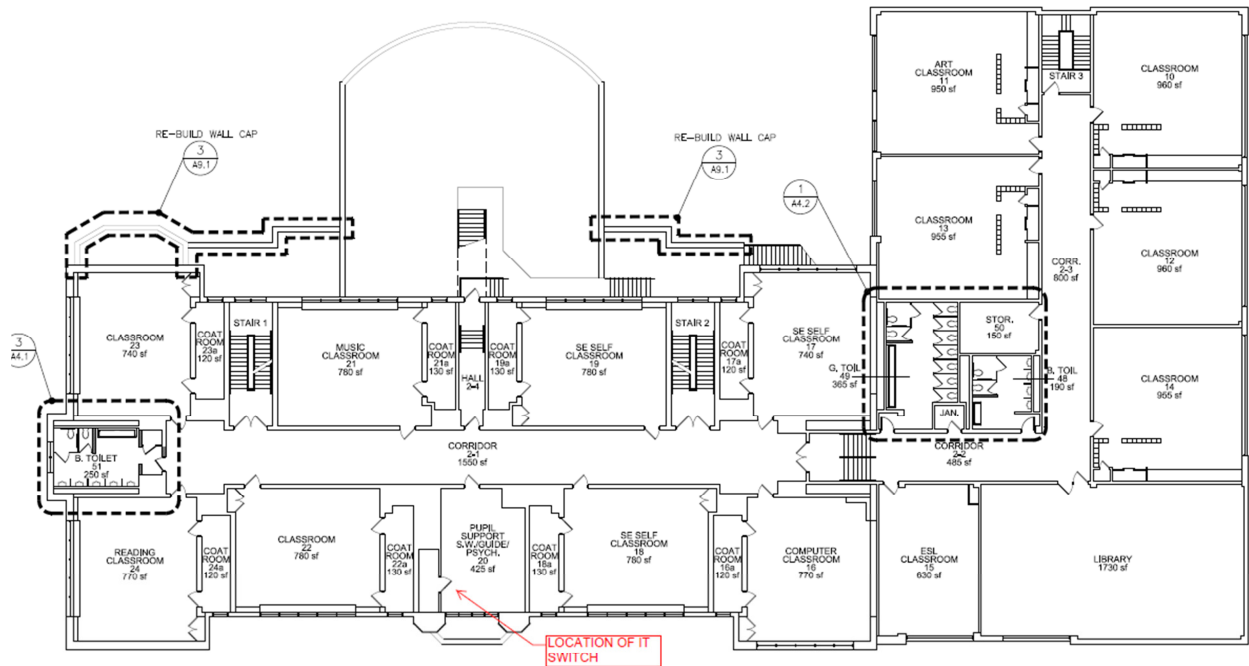
# BASEMEN GYM SUMP PUMP PLAN

(Not to Scale)



## SECOND FLOOR PLAN

(Not to Scale)



2 SECOND FLOOR PLAN

SCALE: 1/16" = 1'-0"

## BMS DIAGRAM

