

LIST OF BACKFLOW PREVENTER APPURTENANCES	
MARK	DESCRIPTION
1	RESILIENT SEATED GATE VALVE
2	TAMPER PROOF RESILIENT SEATED GATE VALVE WITH TAMPER SWITCH
3	STRAINER
4	4" RPZ BACKFLOW PREVENTER - WATTS SERIES 909
5	WATER METER (PER WATER DEPARTMENT)
6	2" TEST OUTLET VALVE
7	PRESSURE REDUCING VALVE
8	AIR GAP (JR SMITH 3955)
9	FUNNEL (JR SMITH 3811)
10	8" DOUBLE CHECK DETECTOR ASSEMBLY-WATTS SERIES 709 DCDA

- GENERAL NOTES - BACKFLOW PREVENTER:**
- LOCATION OF BACKFLOW DEVICES SHALL HAVE ADEQUATE HEAT AND LIGHT.
 - BACKFLOW DEVICES SHALL BE PROTECTED FROM FLOODING.
 - BACKFLOW DEVICES AND WATER METER SHALL BE TESTED AFTER INSTALLATION.
 - OWNER SHALL ARRANGE FOR BACKFLOW DEVICES TO BE TESTED ANNUALLY BY A CERTIFIED TESTER.
 - ANY REVISIONS OR ALTERATION OF THESE PLANS WITHOUT THE EXPRESSED WRITTEN CONSENT OF THE SIGNING ENGINEER IS A VIOLATION OF SECTION 7209 OF THE NEW YORK STATE EDUCATION LAW.

- BACKFLOW PREVENTER FILING REQUIREMENTS**
- A. THIS CONTRACTOR SHALL BE RESPONSIBLE FOR HIRING A LICENCED ENGINEER TO FILE ALL APPLICATIONS, PERMITS AND FILING FEES WITH THE AUTHORITIES HAVING JURISDICTION OVER THE WORK.**
- B. THE FOLLOWING LIST SERVES AS THE MINIMUM FILING REQUIREMENTS. FAILURE TO LIST ANY ITEM DOES NOT RELIEVE THE CONTRACTOR FROM FULFILLING THAT REQUIREMENT.**
- CERTIFICATE OF RESOLUTION OF LETTER OF AUTHORIZATION FROM OWNER/USER TO EXECUTE FILING.
 - PREPARE AND SUBMIT FORM DOH-347 WITH PLANS, PROFESSIONAL ENGINEERS REPORT AND SPECIFICATIONS WITH ENGINEER'S SEAL. FILE WITH HEALTH DEPARTMENT AND WATER DEPARTMENT.
 - FILING FEES, PER DEVICE.
 - EVIDENCE OF CONFORMANCE TO NEW YORK STATE SANITARY CODE, PART 5 AND CHAPTER 873 OF THE LAWS OF WESTCHESTER COUNTY.

LEGEND	
---	NEW PIPING, FIXTURES, ETC.
---	COLD WATER PIPING
---	HOT WATER PIPING
---	HOT WATER RETURN PIPING
---	PLUMBING VENT PIPING
---	SAN
---	SANITARY PIPING (UNDERGROUND)
---	PD
---	PUMP DISCHARGE PIPING
---	UST
---	STORM PIPING
---	ST
---	STORM PIPING (UNDERGROUND)
---	G
---	UNINTERRUPTIBLE GAS PIPING
---	UG
---	UNINTERRUPTIBLE GAS PIPING (UNDERGROUND)
---	W
---	WATER SERVICE PIPING
---	F
---	FIRE PROTECTION PIPING
---	SP
---	SPRINKLER PIPING
---	SPRINKLER HEAD
---	FLOW DIRECTION WITHIN PIPE
---	CLEANOUT
---	CLEANOUT DECK PLATE
---	SHUT-OFF VALVE
---	COMBINATION BALANCING & SHUT-OFF VALVE
---	OS & Y VALVE
---	OS & Y VALVE WITH TAMPER SWITCH
---	CHECK VALVE
---	GAS SHUT OFF COCK
---	SIDEWALL SPRINKLER HEAD
---	PIPE CONNS. (BOTTOM, TOP 45 OR 90, PIPE UP)
---	PLUMBING FIXTURE IDENTIFICATION
---	BACKFLOW PREVENTER APPURTENANCE IDENTIFICATION
---	P.C.
---	PLUMBING CONTRACTOR
---	G.C.
---	GENERAL CONTRACTOR
---	HVAC
---	HVAC CONTRACTOR
---	VTR
---	VENT THRU ROOF
---	FAI
---	FRESH AIR INTAKE
---	FD
---	FLOOR DRAIN
---	PRV
---	PRESSURE REDUCING VALVE
---	CIRCULATOR PUMP IDENTIFICATION
---	SUMP PUMP IDENTIFICATION
---	HOT WATER HEATER IDENTIFICATION
---	POINT OF CONNECTION
---	DRAWING, DETAIL, SECTION NUMBER
---	SECTION IDENTIFICATION

PLUMBING FIXTURE SCHEDULE						
MARK	DESCRIPTION	BRANCH SIZE				
		W	V	IT	C	
A1	WALL MOUNTED WATER CLOSET (FLUSH VALVE)	4"	2"	-	1"	
A2	WALL MOUNTED WATER CLOSET (FLUSH VALVE) (HANDICAPPED)	4"	2"	-	1"	
A3	FLOOR MOUNTED WATER CLOSET (FLUSH VALVE) (HANDICAPPED)	4"	2"	-	1"	
A4	FLOOR MOUNTED CHILDS WATER CLOSET (FLUSH VALVE)	4"	2"	-	1"	
B1	SINGLE SINK UNIT (HANDICAPPED)	1-1/2"	1-1/2"	1/2"	1/2"	
B2	DOUBLE SINK UNIT (HANDICAPPED)	1-1/2"	1-1/2"	1/2"	1/2"	
B3	TRIPPLE SINK UNIT (HANDICAPPED)	1-1/2"	1-1/2"	1/2"	1/2"	
B4	COUNTERTOP CLASSROOM SINK (HANDICAPPED)	1-1/2"	1-1/2"	1/2"	1/2"	
B5	MAKER SPACE SINK	1-1/2"	1-1/2"	1/2"	1/2"	
B6	HEALTH SUITE SINK (HANDICAPPED)	1-1/2"	1-1/2"	1/2"	1/2"	
B7	ART SINK (SINGLE)	1-1/2"	1-1/2"	1/2"	1/2"	
B8	FACULTY SINK (HANDICAPPED)	1-1/2"	1-1/2"	1/2"	1/2"	
B9	MUSIC ROOM SINK	1-1/2"	1-1/2"	1/2"	1/2"	
B10	PRE-K/ K SINK	1-1/2"	1-1/2"	1/2"	1/2"	
C	URINAL - WALL MOUNTED	3"	2"	-	1/2"	
D1	SINGLE WATER COOLER (HANDICAPPED) W/ BOTTLE FILL	2"	1-1/2"	-	1/2"	
D2	DOUBLE WATER COOLER (HANDICAPPED) W/ BOTTLE FILL	2"	1-1/2"	-	1/2"	
D3	DOUBLE BOTTLE FILLING STATION	2"	1-1/2"	-	1/2"	
E	MOP RECEPTOR	3"	3"	3/4"	3/4"	
F	SHOWER	2"	1-1/2"	1/2"	1/2"	
G1	LABORATORY COUNTER MOUNTED SINK	2"	1-1/2"	-	1/2"	
G2	LABORATORY COUNTER MOUNTED SINK (TEACHER'S)	2"	1-1/2"	1/2"	1/2"	
H	EYE WASH	2"	1-1/2"	1/2"	1/2"	

BUILDING STRUCTURE FIREPROOFING:

THE BUILDING STRUCTURE WILL BE PROTECTED BY 2" FIREPROOFING THROUGHOUT. THIS CONTRACTOR SHALL ISSUE COORDINATION DRAWINGS ACCORDING TO THE STRICT SCHEDULE OUTLINED IN THE FRONT END DOCUMENTS. ALL HANGERS FOR PIPING, CONDUIT, DUCTWORK, EQUIPMENT, ETC. MUST BE IN PLACE BEFORE FIREPROOFING TAKES PLACE. THE INSTALLATION OF HANGERS AFTER THE FACT THAT REQUIRES THE RE-APPLICATION OF FIREPROOFING WILL BE AT THE EXPENSE OF THIS CONTRACTOR.

BASEMENT WATERPROOFING:

REFER TO STRUCTURAL DRAWINGS AND ARCHITECTURAL DRAWINGS FOR SLAB/ WALL THICKNESS AND PENETRATION DETAILS. COORDINATE WITH G.C.

NEW COMMUNITY SCHOOL AT THE ST DENIS SITE

YONKERS JOINT SCHOOL CONSTRUCTION BOARD

121 McLean Avenue
Yonkers, NY 10705

KG+D listen imagine build

KG+D . ARCHITECTS PC

285 MAIN STREET MOUNT KISCO, NEW YORK, 10549
P.914.666.5900 KGDARCHITECTS.COM

NY SED PROJECT CONTROL NO.

66-23-00-01-0-346-001

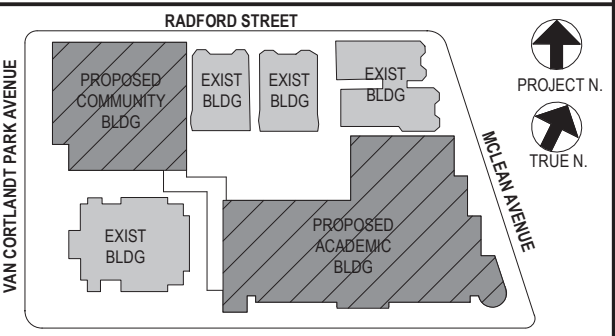
CONSTRUCTION DOCUMENTS

bga

BARILE GALLAGHER & ASSOCIATES

CONSULTING ENGINEERS

99 MARBLE AVE. PLEASANTVILLE, NY 10570
914.326.0099 GENERAL@BGA-ENG.COM WWW.BGA-ENG.COM



NOTE: ALL IDEAS, DESIGN, ARRANGEMENTS AND PLANS INDICATED OR REPRESENTED BY THIS DRAWING ARE OWNED BY AND ARE THE PROPERTY OF YONKERS JOINT SCHOOL CONSTRUCTION BOARD. NO PART OF THIS DRAWING SHALL BE REPRODUCED OR TRANSMITTED IN ANY FORM OR BY ANY MEANS, ELECTRONIC OR MECHANICAL, INCLUDING PHOTOCOPYING, RECORDING, OR BY ANY INFORMATION STORAGE AND RETRIEVAL SYSTEM, WITHOUT THE WRITTEN PERMISSION OF KGAD.

WRITTEN DIMENSIONS ON THIS DRAWING SHALL HAVE PRECEDENCE OVER SCALED DIMENSIONS. CONTRACTOR SHALL VERIFY ALL ACTUAL DIMENSIONS AND CONDITIONS ON THE JOB AND THE ARCHITECT MUST BE NOTIFIED OF ANY VARIATIONS FROM DIMENSIONS AND CONDITIONS SHOWN. SHOP DETAILS MUST BE SUBMITTED TO THIS OFFICE FOR APPROVAL BEFORE PROCEEDING WITH FABRICATION.

ALTERATIONS BY ANY PERSON IN ANY WAY OF ANY ITEM CONTAINED ON THIS DOCUMENT, UNLESS ACTING UNDER THE DIRECTION OF THE LICENSED ARCHITECT, ENGINEER, PROFESSIONAL, SEAL, IS A VIOLATION OF THE PROFESSIONAL ETHICS AND STANDARDS OF THE ARCHITECTURAL AND ENGINEERING PROFESSIONS. ANY VIOLATION OF TITLE 16, SECTION 16-1.5 OF THE NEW YORK STATE LAW, COPYRIGHT INTELLECTUAL PROPERTY, OR ANY OTHER RIGHTS RESERVED.

Professional Seal

4	11/01/2021	ISSUED TO BID
3	07/14/2021	CONSTRUCTION DOCS-NYSED
2	12/15/2020	DESIGN DEVELOPMENT
1	08/31/2020	SCHEMATIC DESIGN
No	Date	Issue

Sheet Title

Legend, Schedule, Notes, and
Basement Floor Plumbing Plan

Job No. 2019-1026 Date 11/18/20

Scale AS NOTED Drawn / Checked BGA/ BGA

Sheet Number

P200

BEFORE FABRICATION THIS CONTRACTOR SHALL VERIFY ALL MEASUREMENTS AND CONDITIONS ON JOB AND COORDINATE HIS WORK WITH THE WORK OF ALL OTHER CONTRACTORS

NEW COMMUNITY
SCHOOL AT THE
ST DENIS SITE

YONKERS JOINT SCHOOL
CONSTRUCTION BOARD
121 McLean Avenue
Yonkers, NY 10705



KG+D . ARCHITECTS PC
285 MAIN STREET MOUNT KISCO, NEW YORK, 10549
P.914.666.5900 KGDARCHITECTS.COM

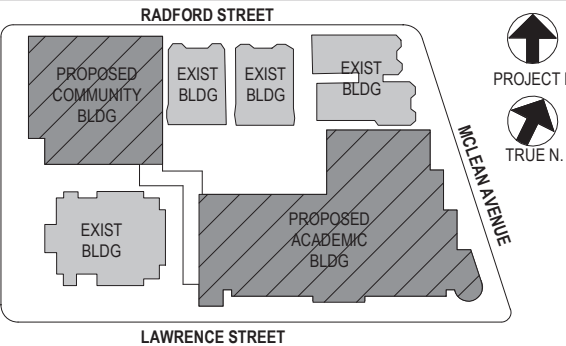
NY SED PROJECT CONTROL NO.
66-23-00-01-0-346-001

CONSTRUCTION DOCUMENTS



BARILE GALLAGHER & ASSOCIATES

CONSULTING ENGINEERS
99 MARBLE AVE. PLEASANTVILLE, NY 10570
914.326.0099 GENERAL@BGA-ENG.COM WWW.BGA-ENG.COM



NOTE: ALL IDEAS, DESIGN, ARRANGEMENTS AND PLANS INDICATED OR REPRESENTED BY THIS DRAWING ARE OWNED BY AND ARE THE PROPERTY OF KATYER GARIBAY & ASSOCIATES ARCHITECTS, P.C. (KGA) AND WERE CREATED FOR USE ON THE PROJECT. NONE OF SUCH IDEAS, DESIGN, ARRANGEMENTS OR PLANS SHALL BE USED BY OR DISCLOSED TO ANY PURPOSE WHATSOEVER WITHOUT THE WRITTEN PERMISSION OF KGA.

WRITTEN DIMENSIONS ON THIS DRAWING SHALL HAVE PRECEDENCE OVER SCALED DIMENSIONS. CONTRACTOR SHALL VERIFY ALL ACTUAL DIMENSIONS AND CONDITIONS ON THE JOB AND THE ARCHITECT MUST BE NOTIFIED OF ANY VARIATIONS FROM DIMENSIONS AND CONDITIONS SHOWN. SHOP DETAILS MUST BE SUBMITTED TO THIS OFFICE FOR APPROVAL BEFORE PROCEEDING WITH FABRICATION.

ALTERATIONS BY ANY PERSON, IN ANY WAY, OF ANY ITEM CONTAINED ON THIS DOCUMENT, UNLESS ACTING UNDER THE DIRECTION OF THE LICENSED ARCHITECT, WHOSE PROFESSIONAL SEAL IS AFFIXED HERETO, IS A VIOLATION OF TITLE 24, SECTION 26-150 OF NEW YORK STATE LAW.
COPYRIGHT KATYER GARIBAY & ASSOCIATES ARCHITECTS & ENGINEERS, P.C. ALL RIGHTS RESERVED.

Professional Seal

No.	Date	Issue
4	11/01/2021	ISSUED TO BID
3	07/14/2021	CONSTRUCTION DOCS-NYSED
2	12/15/2020	DESIGN DEVELOPMENT
1	08/31/2020	SCHEMATIC DESIGN

Sheet Title

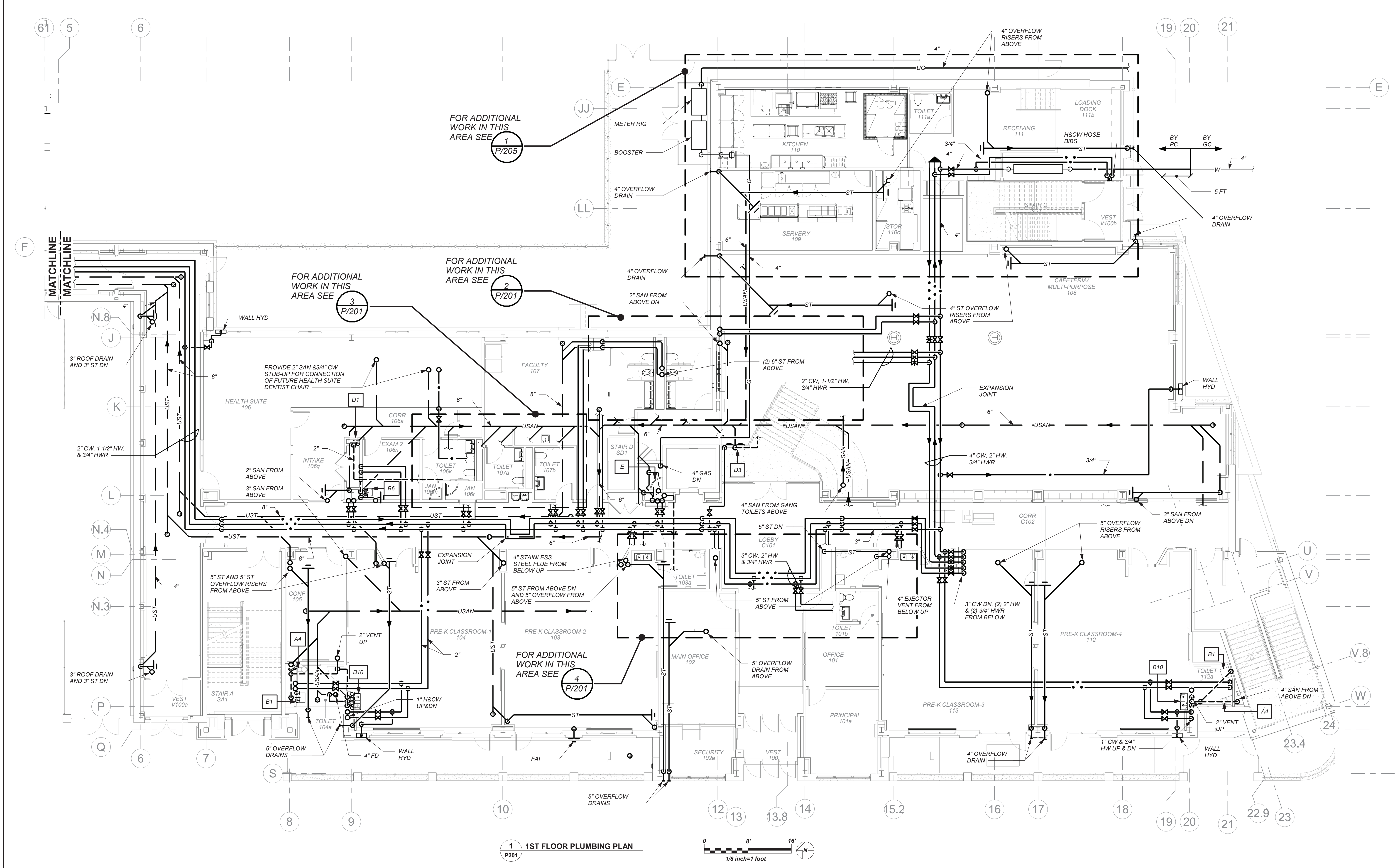
1st Floor Plan

Job No. 2019-1026 Date 11/18/20

Scale AS NOTED Drawn / Checked BGA/ BGA

Sheet Number

P201



1 1ST FLOOR PLUMBING PLAN

0 8' 16'
1/8 inch=1 foot

3 1ST FLOOR TOILET PLAN

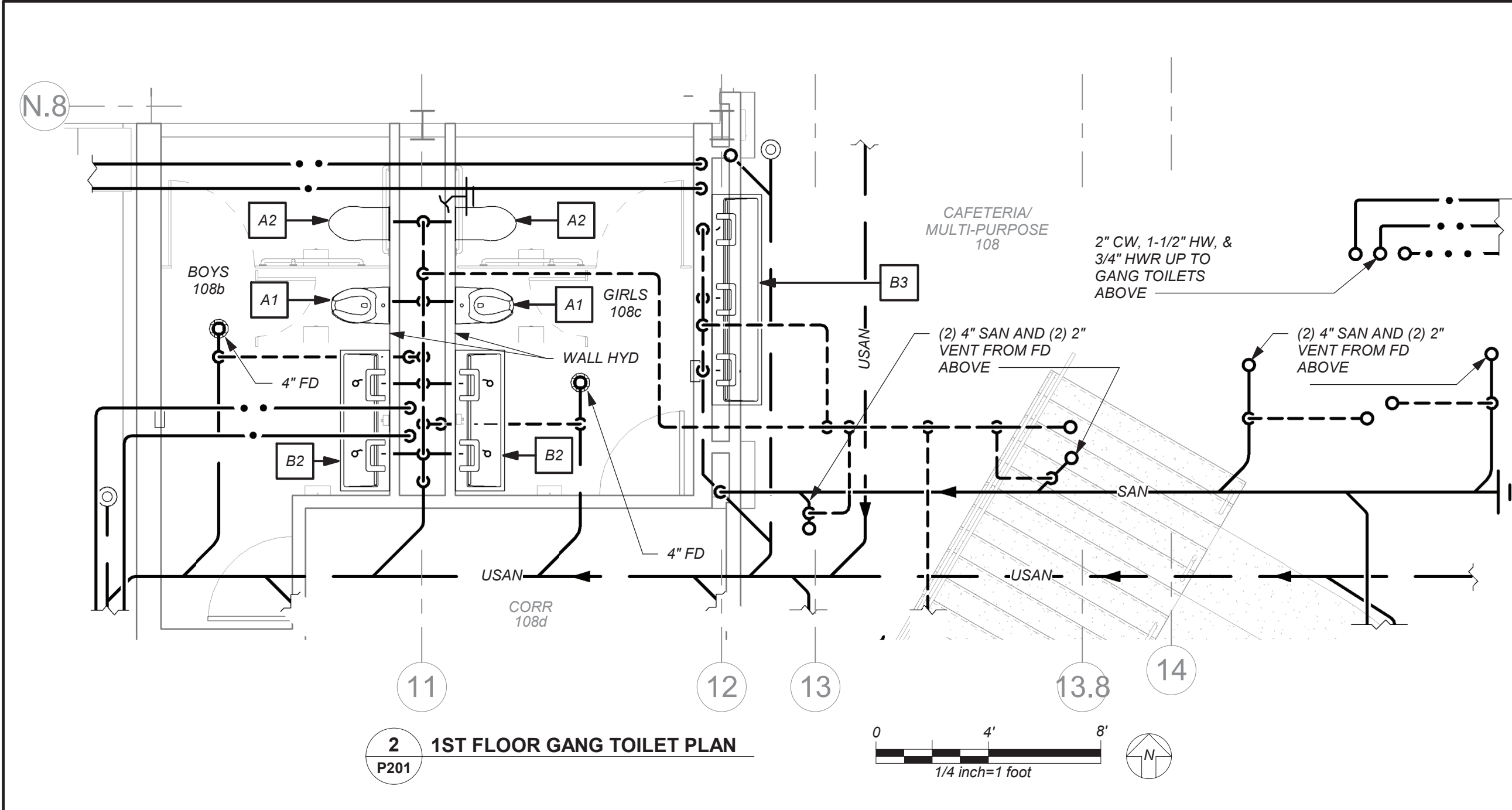
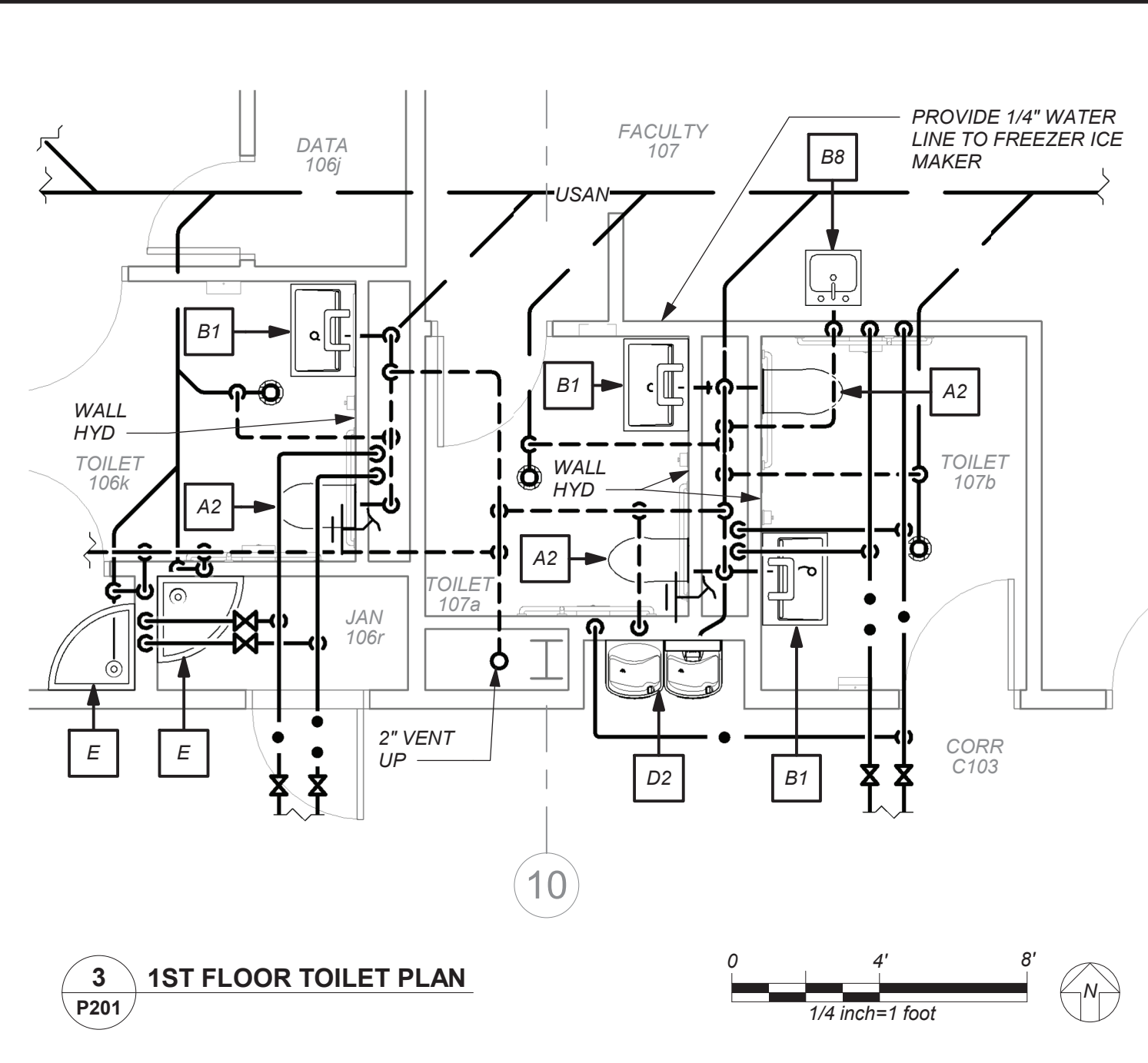
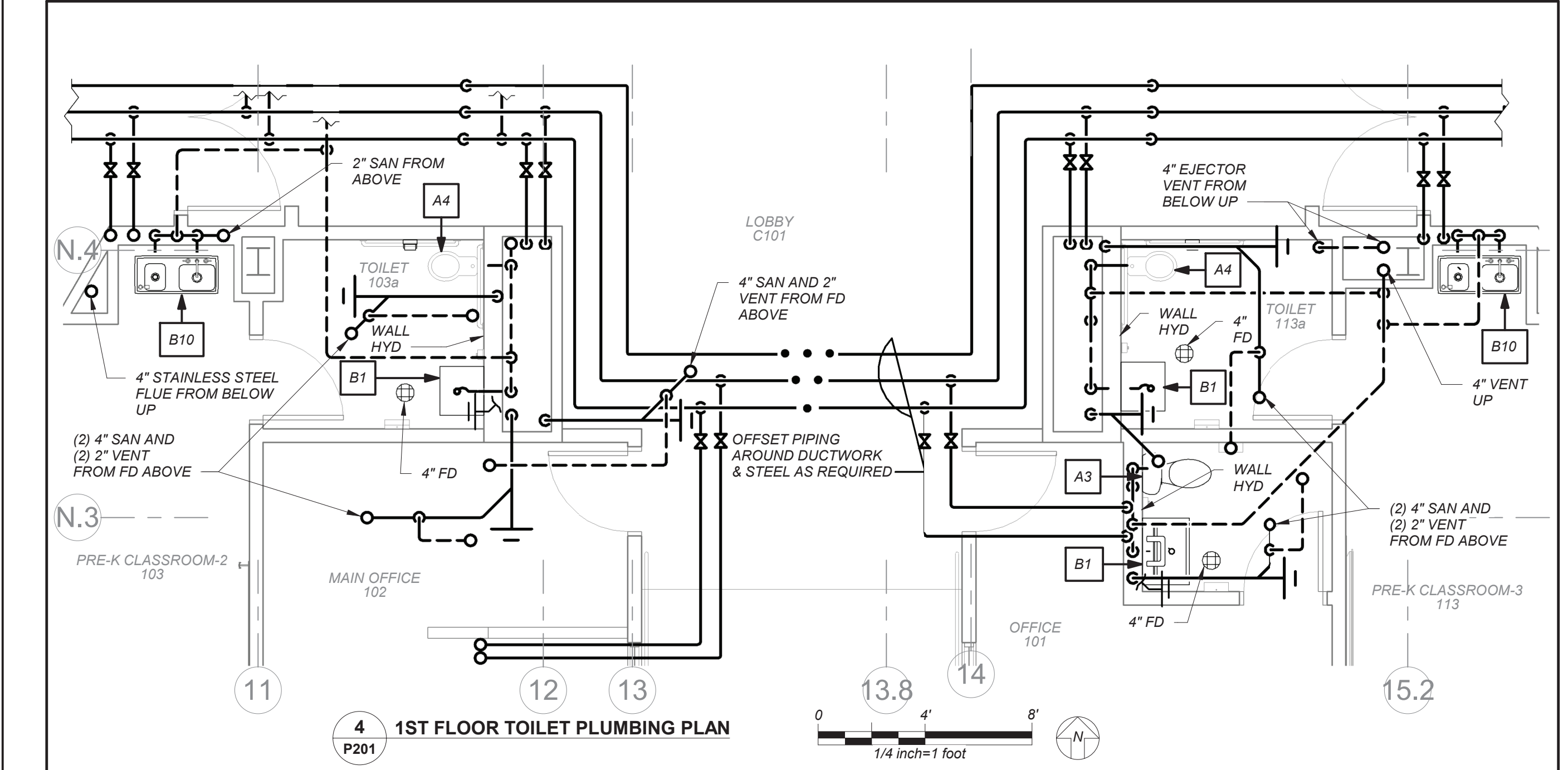
0 4' 8'
1/4 inch=1 foot

2 1ST FLOOR GANG TOILET PLAN

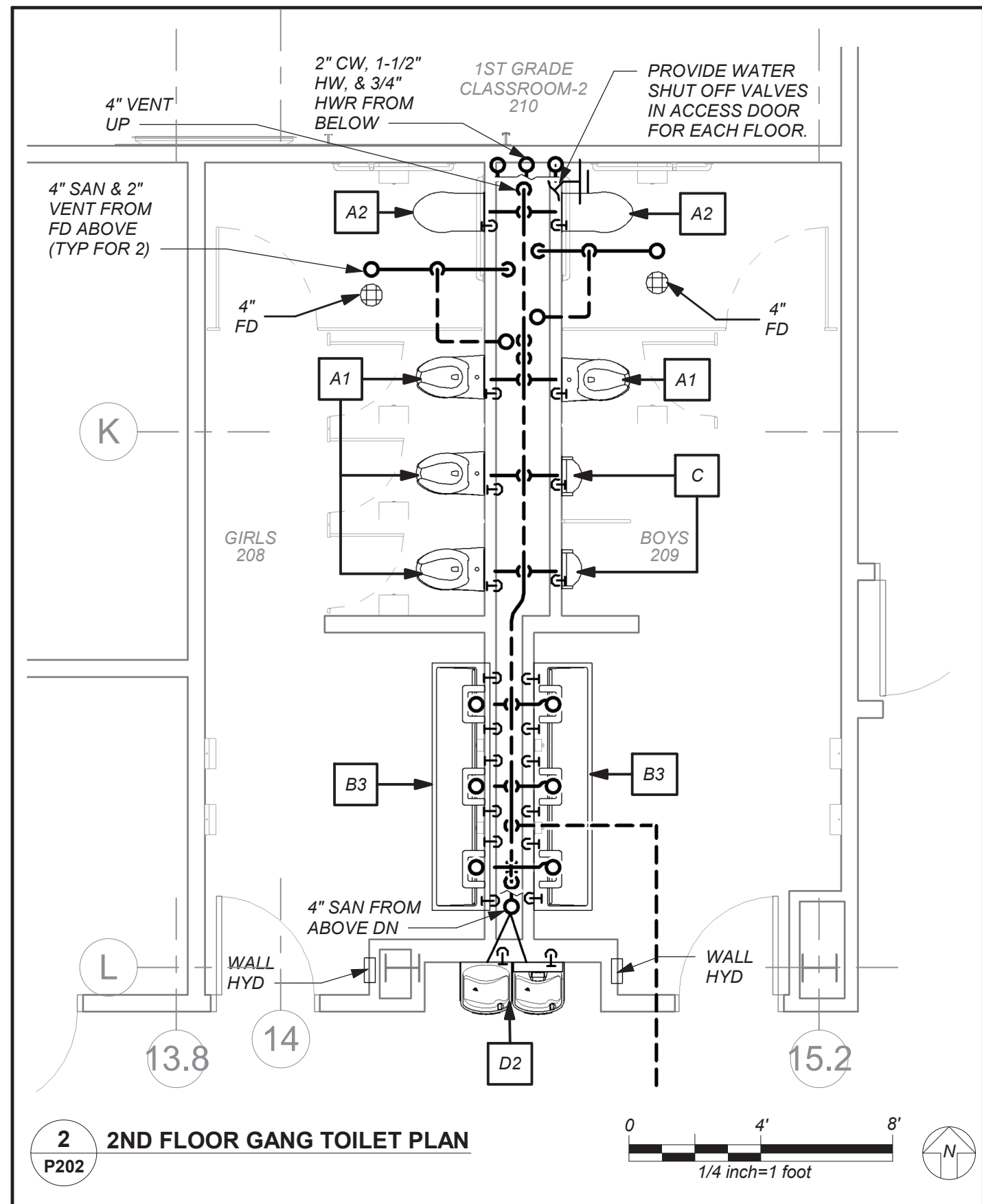
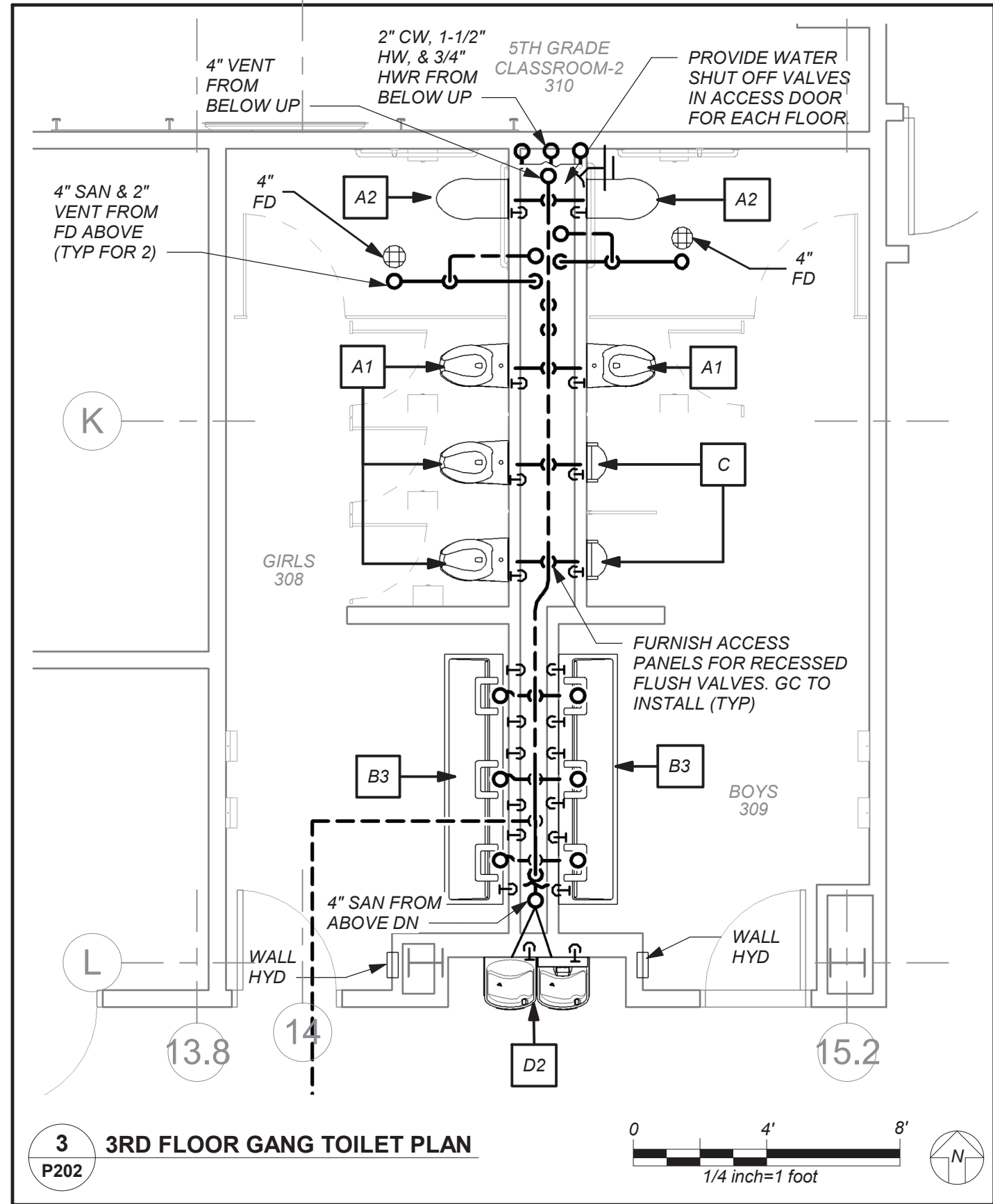
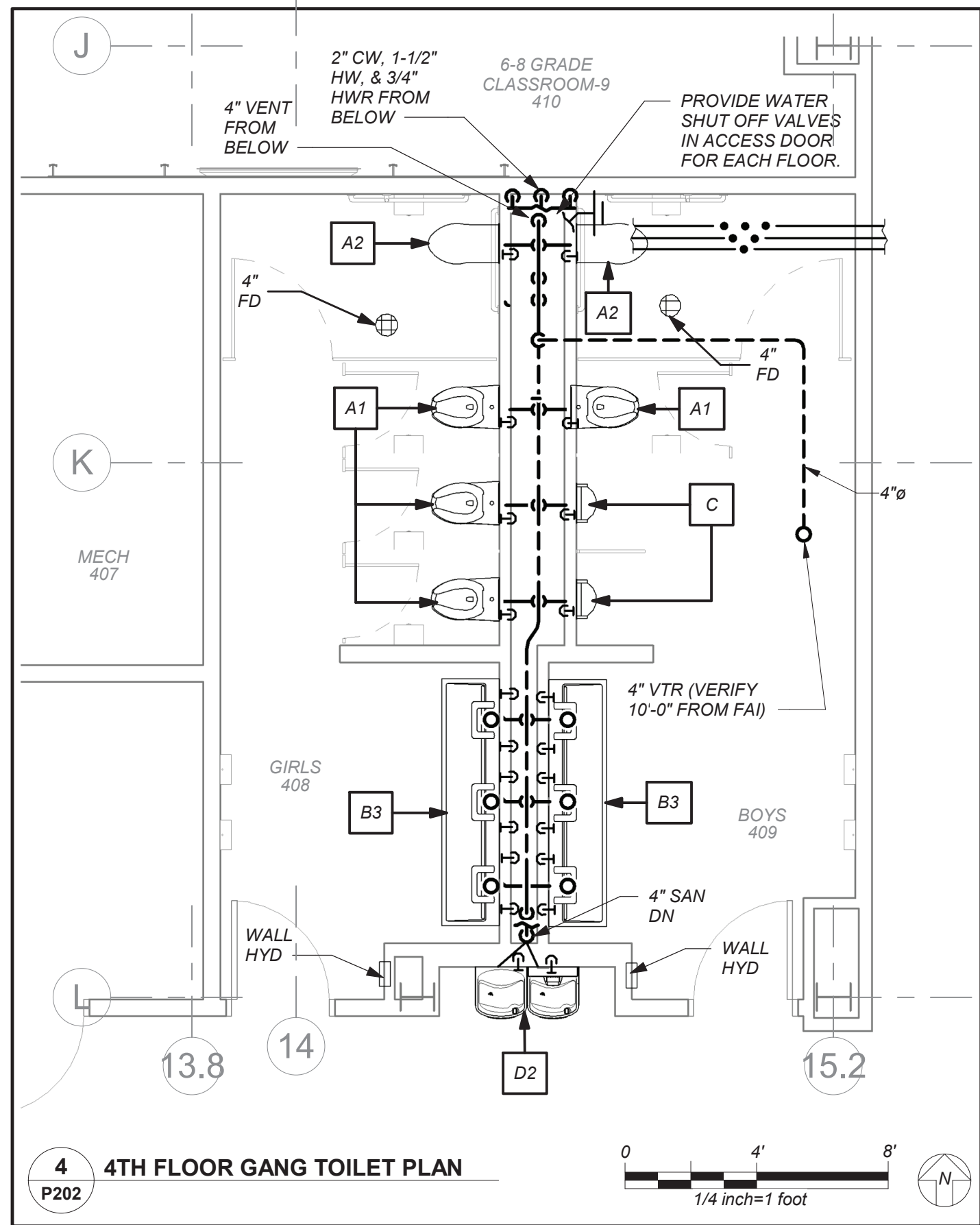
0 4' 8'
1/4 inch=1 foot

4 1ST FLOOR TOILET PLUMBING PLAN

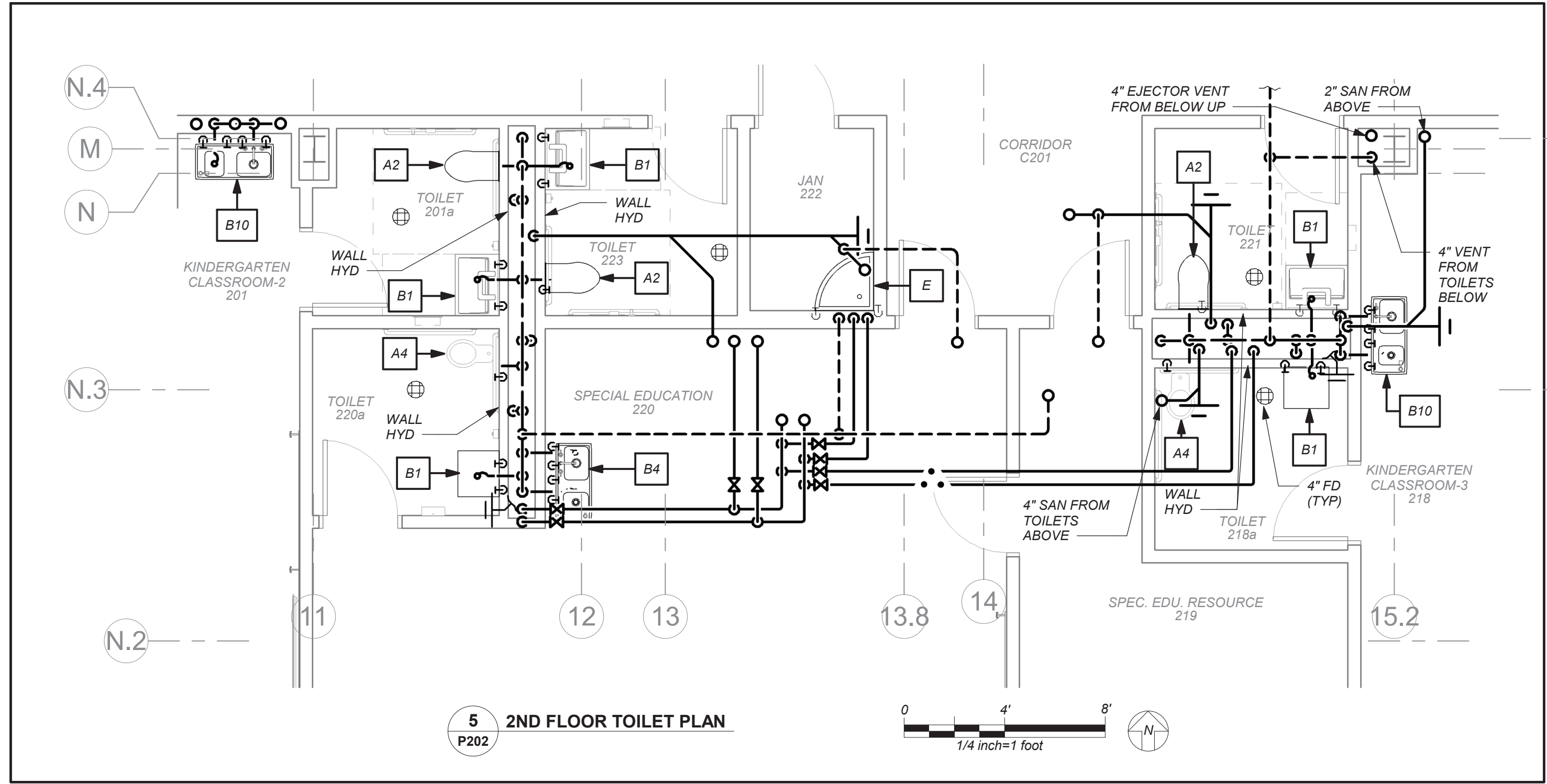
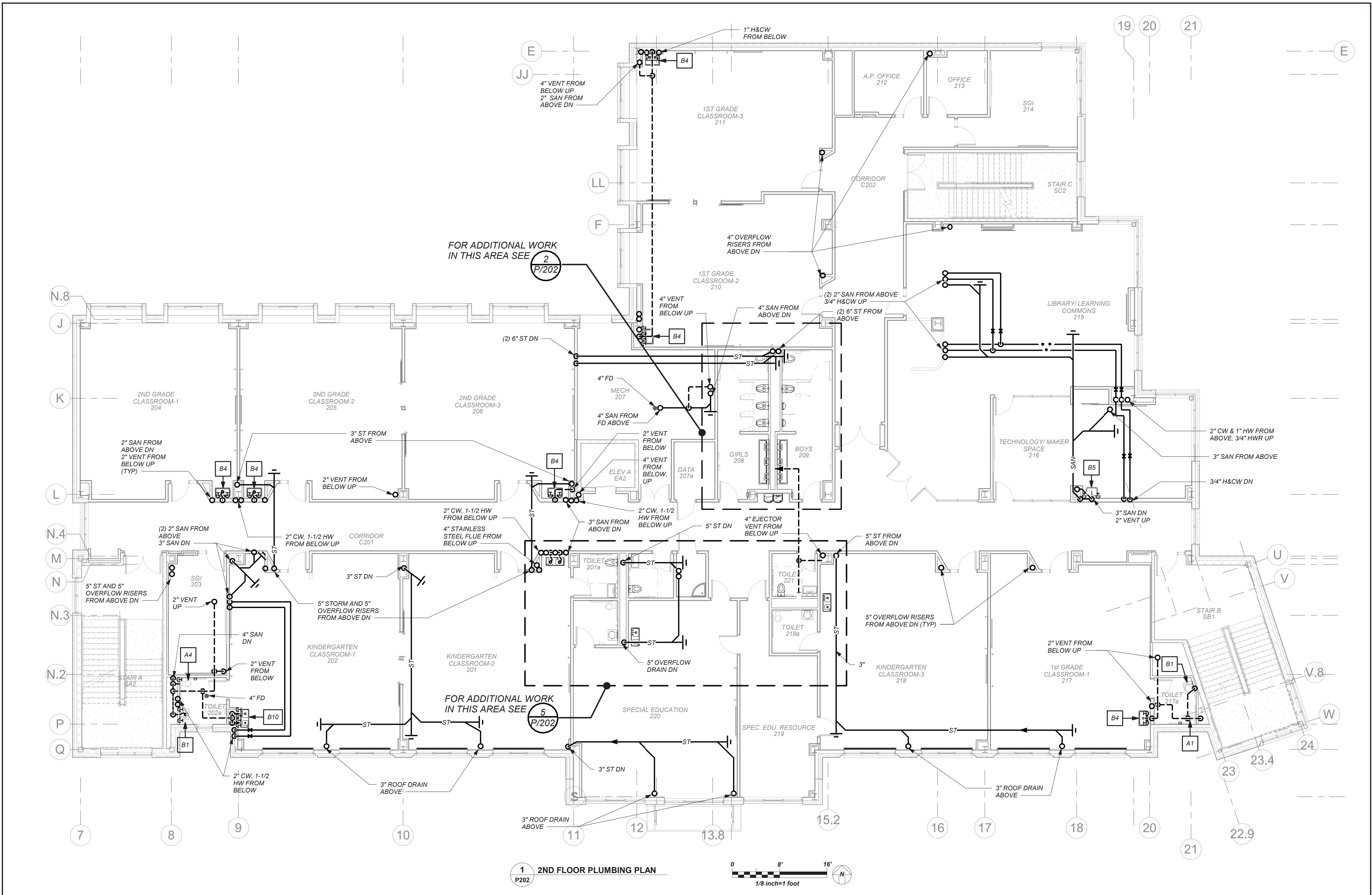
0 13.8 4' 8'
1/4 inch=1 foot



BEFORE FABRICATION THIS CONTRACTOR SHALL
VERIFY ALL MEASUREMENTS AND CONDITIONS ON
JOB AND COORDINATE HIS WORK WITH THE WORK
OF ALL OTHER CONTRACTORS



BEFORE FABRICATION THIS CONTRACTOR SHALL VERIFY ALL MEASUREMENTS AND CONDITIONS ON JOB AND COORDINATE HIS WORK WITH THE WORK OF ALL OTHER CONTRACTORS



NEW COMMUNITY SCHOOL AT THE ST DENIS SITE

YONKERS JOINT SCHOOL CONSTRUCTION BOARD
121 McLean Avenue
Yonkers, NY 10705



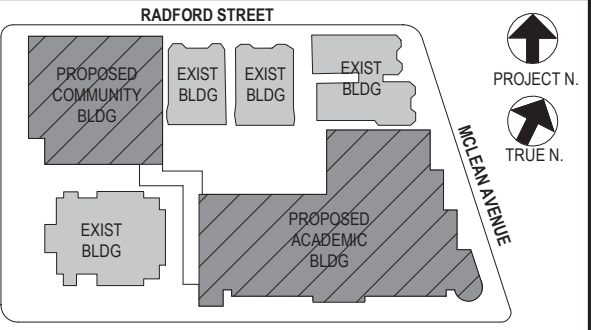
KG+D . ARCHITECTS PC
285 MAIN STREET MOUNT KISCO, NEW YORK, 10549
P.914.666.5900 KGDARCHITECTS.COM

NY SED PROJECT CONTROL NO.
66-23-00-01-0-346-001

CONSTRUCTION DOCUMENTS



BARILE GALLAGHER & ASSOCIATES
CONSULTING ENGINEERS
99 MARBLE AVE. PLEASANTVILLE, NY 10570
914.326.0099 GENERAL@BGA-ENG.COM WWW.BGA-ENG.COM



NOTE: ALL IDEAS, DESIGN, ARRANGEMENTS AND PLANS INDICATED OR REPRESENTED BY THIS DRAWING ARE OWNED BY AND ARE THE PROPERTY OF YONKERS JOINT SCHOOL CONSTRUCTION BOARD. NO PART OF THIS DRAWING OR ANY INFORMATION CONTAINED HEREIN SHALL BE REPRODUCED OR TRANSMITTED IN ANY FORM OR BY ANY MEANS, ELECTRONIC OR MECHANICAL, INCLUDING PHOTOCOPYING, RECORDING, OR BY ANY INFORMATION STORAGE AND RETRIEVAL SYSTEM, WITHOUT THE WRITTEN PERMISSION OF KGAD.

WRITTEN DIMENSIONS ON THIS DRAWING SHALL HAVE PRECEDENCE OVER SCALED DIMENSIONS. CONTRACTOR SHALL VERIFY ALL ACTUAL DIMENSIONS AND CONDITIONS ON THE JOB AND THE ARCHITECT MUST BE NOTIFIED OF ANY VARIATIONS FROM DIMENSIONS AND CONDITIONS SHOWN. SHOP DETAILS MUST BE SUBMITTED TO THIS OFFICE FOR APPROVAL BEFORE PROCEEDING WITH FABRICATION.

ALTERATIONS BY ANY PERSON IN ANY WAY OF ANY ITEM CONTAINED ON THIS DOCUMENT, UNLESS ACTING UNDER THE DIRECTION OF THE LICENSED ARCHITECT, ENGINEER, PROFESSIONAL, SEAL, OR FINISH HEREIN, IS A VIOLATION OF TITLE 24, SECTION 24-100 OF NEW YORK STATE LAW.

COPYRIGHT NOTICE: YONKERS JOINT SCHOOL CONSTRUCTION BOARD & ENGINEERS, PC ALL RIGHTS RESERVED.

Professional Seal

No.	Date	Issue
4	11/01/2021	ISSUED TO BID
3	07/14/2021	CONSTRUCTION DOCS-NYSED
2	12/15/2020	DESIGN DEVELOPMENT
1	08/31/2020	SCHEMATIC DESIGN

Sheet Title

2nd Floor Plan

Job No. 2019-1026 Date 11/16/20

Scale AS NOTED Drawn / Checked BGA/BGA

Sheet Number

P202

NEW COMMUNITY
SCHOOL AT THE
ST DENIS SITE

YONKERS JOINT SCHOOL
CONSTRUCTION BOARD
121 McLean Avenue
Yonkers, NY 10705

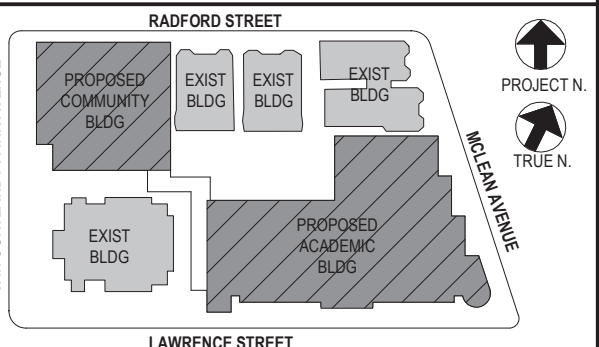


KG+D . ARCHITECTS PC
285 MAIN STREET MOUNT KISCO, NEW YORK, 10549
P.914.666.5900 KGDARCHITECTS.COM

NY SED PROJECT CONTROL NO.
66-23-00-01-0-346-001

CONSTRUCTION DOCUMENTS

bga
BARILE GALLAGHER & ASSOCIATES
CONSULTING ENGINEERS
99 MARBLE AVE. PLEASANTVILLE, NY 10570
914.326.0099 GENERAL@BGA-ENG.COM www.BGA-ENG.COM



NOTE: ALL IDEAL DESIGN ARRANGEMENTS AND PLANS INDICATED OR REPRESENTED BY THIS DRAWING ARE OWNED BY AND ARE THE PROPERTY OF KATYER GARRETT & ASSOCIATES ARCHITECTS, P.C. HEREIN AND HEREIN CREDITED FOR USE ON THE PROJECT. NONE OF SUCH IDEAS, DESIGNS, ARRANGEMENTS OR PLANS SHALL BE USED BY OR DISCLOSED TO ANY PURPOSE WHATSOEVER WITHOUT THE WRITTEN PERMISSION OF KATYER GARRETT & ASSOCIATES ARCHITECTS, P.C.

WRITTEN DIMENSIONS ON THIS DRAWING SHALL HAVE PRECEDENCE OVER SCALED DIMENSIONS. CONTRACTOR SHALL VERIFY ALL ACTUAL DIMENSIONS AND CONDITIONS ON THE JOB AND THE ARCHITECT MUST BE NOTIFIED OF ANY VARIATIONS FROM DIMENSIONS AND CONDITIONS SHOWN. SHOP DETAILS MUST BE SUBMITTED TO THIS OFFICE FOR APPROVAL BEFORE PROCEEDING WITH FABRICATION.

ALTERATIONS BY ANY PERSON, IN ANY WAY, OF ANY ITEM CONTAINED ON THIS DOCUMENT, UNLESS ACTING UNDER THE DIRECTION OF THE LICENSED ARCHITECT, WHOSE PROFESSIONAL SEAL IS AFFIXED HERETO, IS A VIOLATION OF TITLE 16, SECTION 16-1.5 OF NEW YORK STATE LAW.

COPYRIGHT KATYER GARRETT & ASSOCIATES ARCHITECTS & ENGINEERS, P.C. ALL RIGHTS RESERVED.

Professional Seal

4	11/01/2021	ISSUED TO BID
3	07/14/2021	CONSTRUCTION DOCS-NYS
2	12/15/2020	DESIGN DEVELOPMENT
1	08/31/2020	SCHEMATIC DESIGN

No. Date Issue

Sheet Title

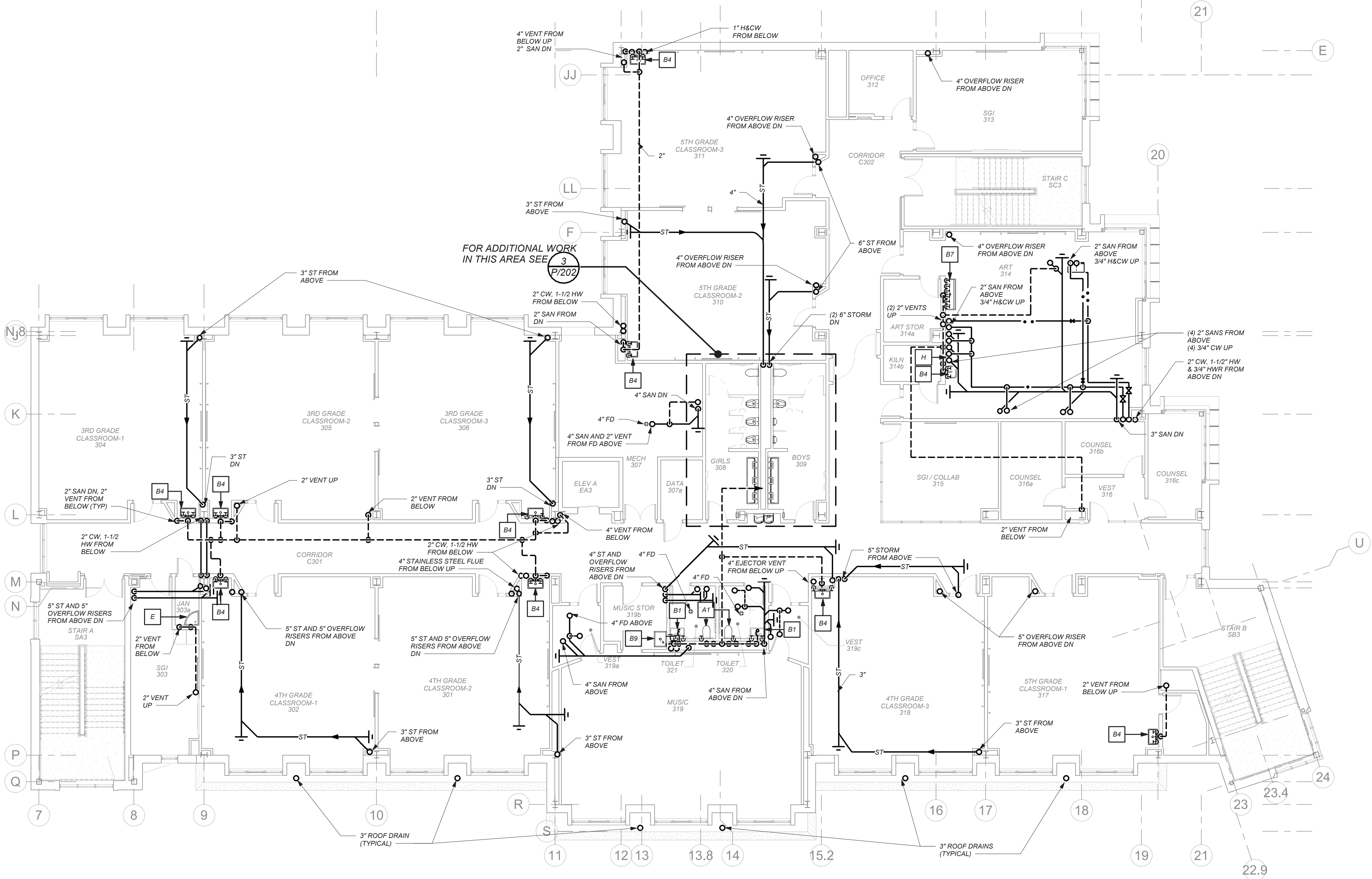
3rd Floor Plan

Job No. 2019-1026 Date 11/18/20

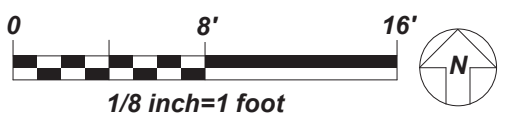
Scale AS NOTED Drawn / Checked BGA /BGA

Sheet Number

P203



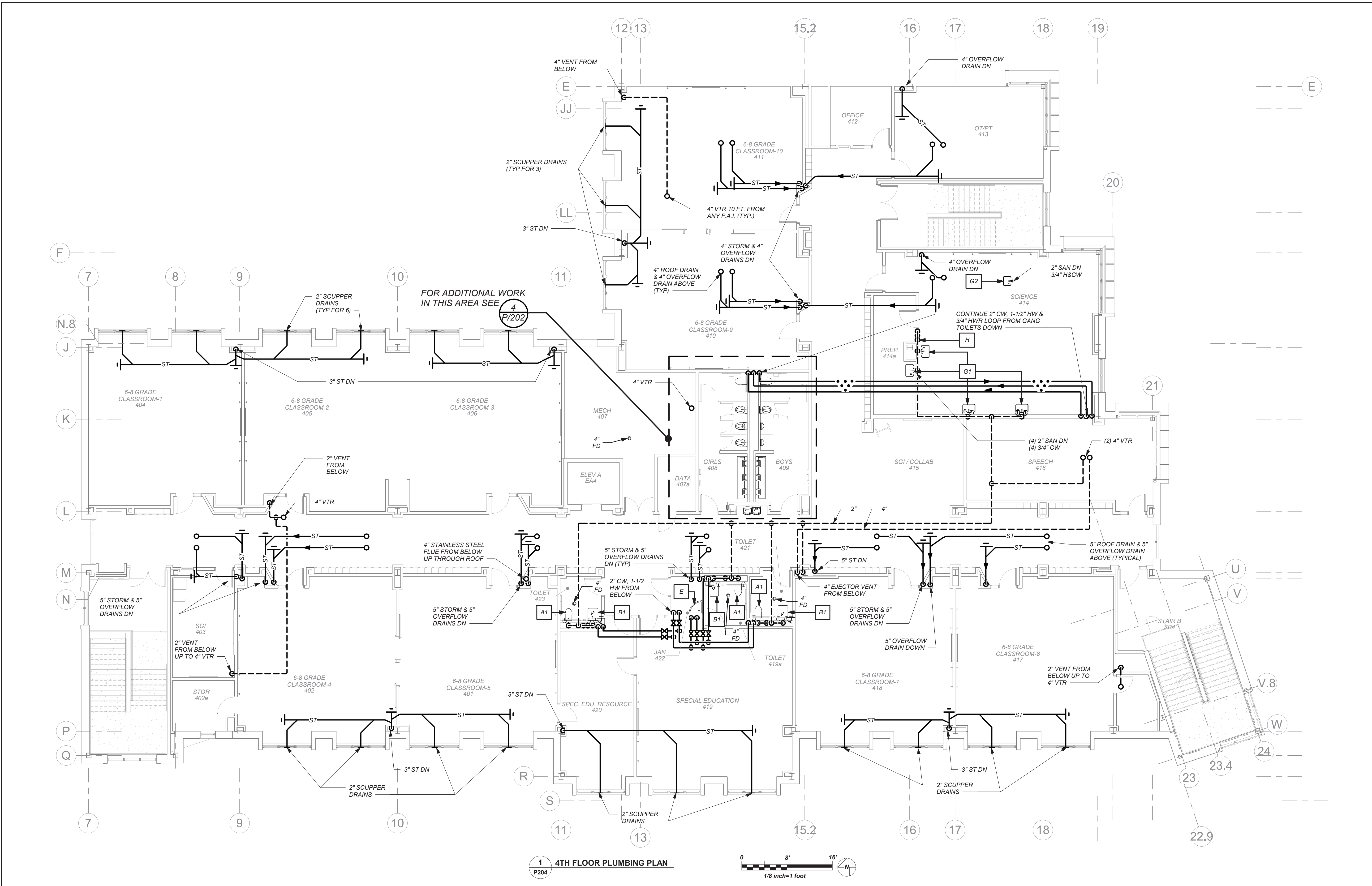
1 3RD FLOOR PLUMBING PLAN
P203



BEFORE FABRICATION THIS CONTRACTOR SHALL
VERIFY ALL MEASUREMENTS AND CONDITIONS ON
JOB AND COORDINATE HIS WORK WITH THE WORK
OF ALL OTHER CONTRACTORS

BEFORE FABRICATION THIS CONTRACTOR SHALL
VERIFY ALL MEASUREMENTS AND CONDITIONS ON
JOB AND COORDINATE HIS WORK WITH THE WORK
OF ALL OTHER CONTRACTORS

11/3/2021 4:28:30 PM



NEW COMMUNITY SCHOOL AT THE ST DENIS SITE

YONKERS JOINT SCHOOL CONSTRUCTION BOARD
121 McLean Avenue
Yonkers, NY 10705



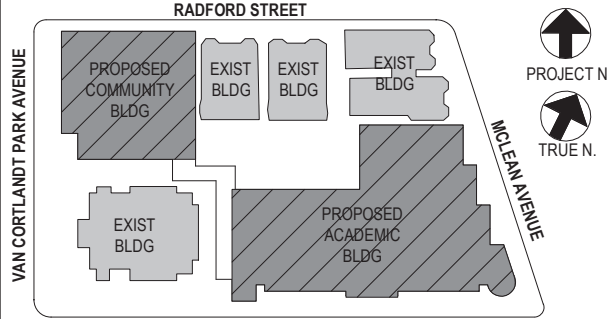
KG+D . ARCHITECTS PC
285 MAIN STREET MOUNT KISCO, NEW YORK, 10549
P.914.666.5900 KGDARCHITECTS.COM

NY SED PROJECT CONTROL NO.
66-23-00-01-0-346-001

CONSTRUCTION DOCUMENTS



BARILE GALLAGHER & ASSOCIATES
CONSULTING ENGINEERS
99 MARBLE AVE. PLEASANTVILLE, NY 10570
914.326.0099 GENERAL@BGA-ENG.COM WWW.BGA-ENG.COM



NOTE: ALL IDEAS, DESIGN, ARRANGEMENTS AND PLANS INDICATED OR REPRESENTED BY THIS DRAWING ARE OWNED BY AND ARE THE PROPERTY OF KATYER GARRETT & ASSOCIATES ARCHITECTS, P.C. (KGA) AND WERE CREATED FOR USE ON THE PROJECT. NONE OF SUCH IDEAS, DESIGN, ARRANGEMENTS OR PLANS SHALL BE USED BY OR DISCLOSED TO ANY PURPOSE WHATSOEVER WITHOUT THE WRITTEN PERMISSION OF KGA.

WRITTEN DIMENSIONS ON THIS DRAWING SHALL HAVE PRECEDENCE OVER SCALED DIMENSIONS. CONTRACTOR SHALL VERIFY ALL ACTUAL DIMENSIONS AND CONDITIONS ON THE JOB AND THE ARCHITECT MUST BE NOTIFIED OF ANY VARIATIONS FROM DIMENSIONS AND CONDITIONS SHOWN. SHOP DETAILS MUST BE SUBMITTED TO THIS OFFICE FOR APPROVAL BEFORE PROCEEDING WITH FABRICATION.

ALTERATIONS BY ANY PERSON, IN ANY WAY, OF ANY ITEM CONTAINED ON THIS DOCUMENT, UNLESS ACTING UNDER THE DIRECTION OF THE LICENSED ARCHITECT, WHOSE PROFESSIONAL SEAL IS AFFIXED HERETO, IS A VIOLATION OF TITLE 16, SECTION 16-1.5 OF NEW YORK STATE LAW.
COPYRIGHT KATYER GARRETT & ASSOCIATES ARCHITECTS & ENGINEERS, P.C. ALL RIGHTS RESERVED.

Professional Seal

4	11/01/2021	ISSUED TO BID
3	07/14/2021	CONSTRUCTION DOCS-NYSED
2	12/15/2020	DESIGN DEVELOPMENT
1	08/31/2020	SCHEMATIC DESIGN

No. Date Issue

Sheet Title

4th Floor Plan

Job No. 2019-1026 Date 11/18/20

Scale AS NOTED Drawn / Checked BGA /BGA

Sheet Number

P204

NEW COMMUNITY
SCHOOL AT THE
ST DENIS SITE

YONKERS JOINT SCHOOL
CONSTRUCTION BOARD
121 McLean Avenue
Yonkers, NY 10705

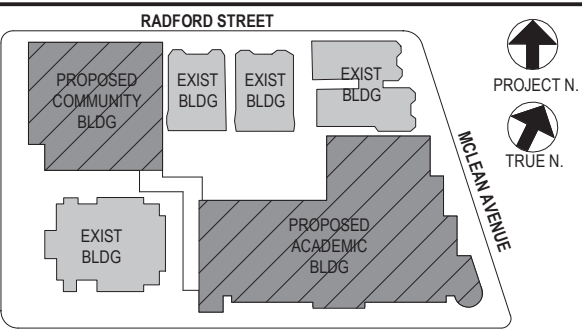
KG+D listen
imagine
build

KG+D . ARCHITECTS PC
285 MAIN STREET MOUNT KISCO, NEW YORK, 10549
P.914.666.5900 KGDARCHITECTS.COM

NY SED PROJECT CONTROL NO.
66-23-00-01-0-346-001

CONSTRUCTION DOCUMENTS

bga
BARILE GALLAGHER & ASSOCIATES
CONSULTING ENGINEERS
99 MARBLE AVE. PLEASANTVILLE, NY 10570
914.326.0099 GENERAL@BGA-ENG.COM WWW.BGA-ENG.COM



NOTE: ALL IDEAS, DESIGN, ARRANGEMENTS AND PLANS INDICATED OR REPRESENTED BY THIS DRAWING ARE OWNED BY AND ARE THE PROPERTY OF WATER GARBENT & ASSOCIATES ARCHITECTS, P.C. HEREIN, AND WERE CREATED FOR USE ON THE PROJECT. NONE OF SUCH IDEAS, DESIGN, ARRANGEMENTS OR PLANS SHALL BE USED BY OR DISCLOSED TO ANY PURPOSE WHATSOEVER WITHOUT THE WRITTEN PERMISSION OF (KGAD).

WRITTEN DIMENSIONS ON THIS DRAWING SHALL HAVE PRECEDENCE OVER SCALED DIMENSIONS. CONTRACTOR SHALL VERIFY ALL ACTUAL DIMENSIONS AND CONDITIONS ON THE JOB AND THE ARCHITECT MUST BE NOTIFIED OF ANY VARIATIONS FROM DIMENSIONS AND CONDITIONS SHOWN. SHOP DETAILS MUST BE SUBMITTED TO THIS OFFICE FOR APPROVAL BEFORE PROCEEDING WITH FABRICATION.

ALTERATIONS BY ANY PERSON IN ANY WAY OF ANY ITEM CONTAINED ON THIS DOCUMENT, UNLESS ACTING UNDER THE DIRECTION OF THE LICENSED ARCHITECT, WHOSE PROFESSIONAL SEAL IS AFFIXED HERETO, IS A VIOLATION OF TITLE 16, SECTION 16-1.5 OF THE NEW YORK STATE LAW. COPYRIGHT 2020 WATER GARBENT & ASSOCIATES ARCHITECTS & ENGINEERS, P.C. ALL RIGHTS RESERVED.

Professional Seal

LIST OF BACKFLOW PREVENTER APPURTENANCES			
MARK	DESCRIPTION		
1	RESILIENT SEATED GATE VALVE		
2	TAMPER PROOF RESILIENT SEATED GATE VALVE WITH TAMPER SWITCH		
3	STRAINER		
4	4" RPZ BACKFLOW PREVENTER - WATTS SERIES LF909		
5	WATER METER (PER WATER DEPARTMENT)		
6	2" TEST OUTLET VALVE		
7	PRESSURE REDUCING VALVE		
8	12" FUNNEL (JR SMITH 3811)		
9	8" DOUBLE CHECK DETECTOR ASSEMBLY-WATTS SERIES LF709 DCDA		
No.	Date	Issue	
4	11/01/2021	ISSUED TO BID	
3	07/14/2021	CONSTRUCTION DOCS-NYSED	
2	12/15/2020	DESIGN DEVELOPMENT	
1	08/31/2020	SCHEMATIC DESIGN	

Sheet Title

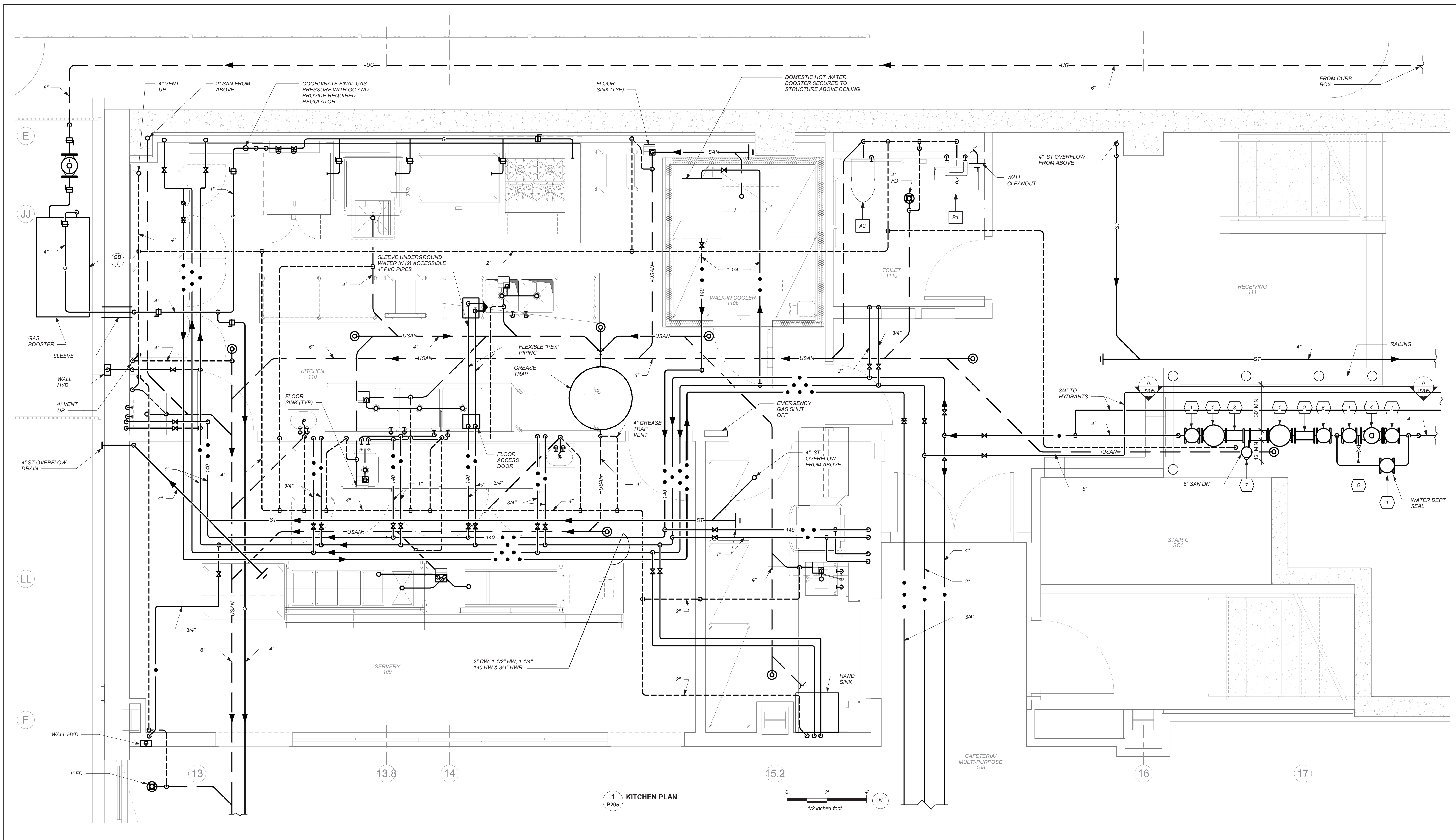
1st Floor Kitchen Plan

Job No. 2019-1026 Date 06/10/21

Scale AS NOTED Drawn / Checked BGA/BGA

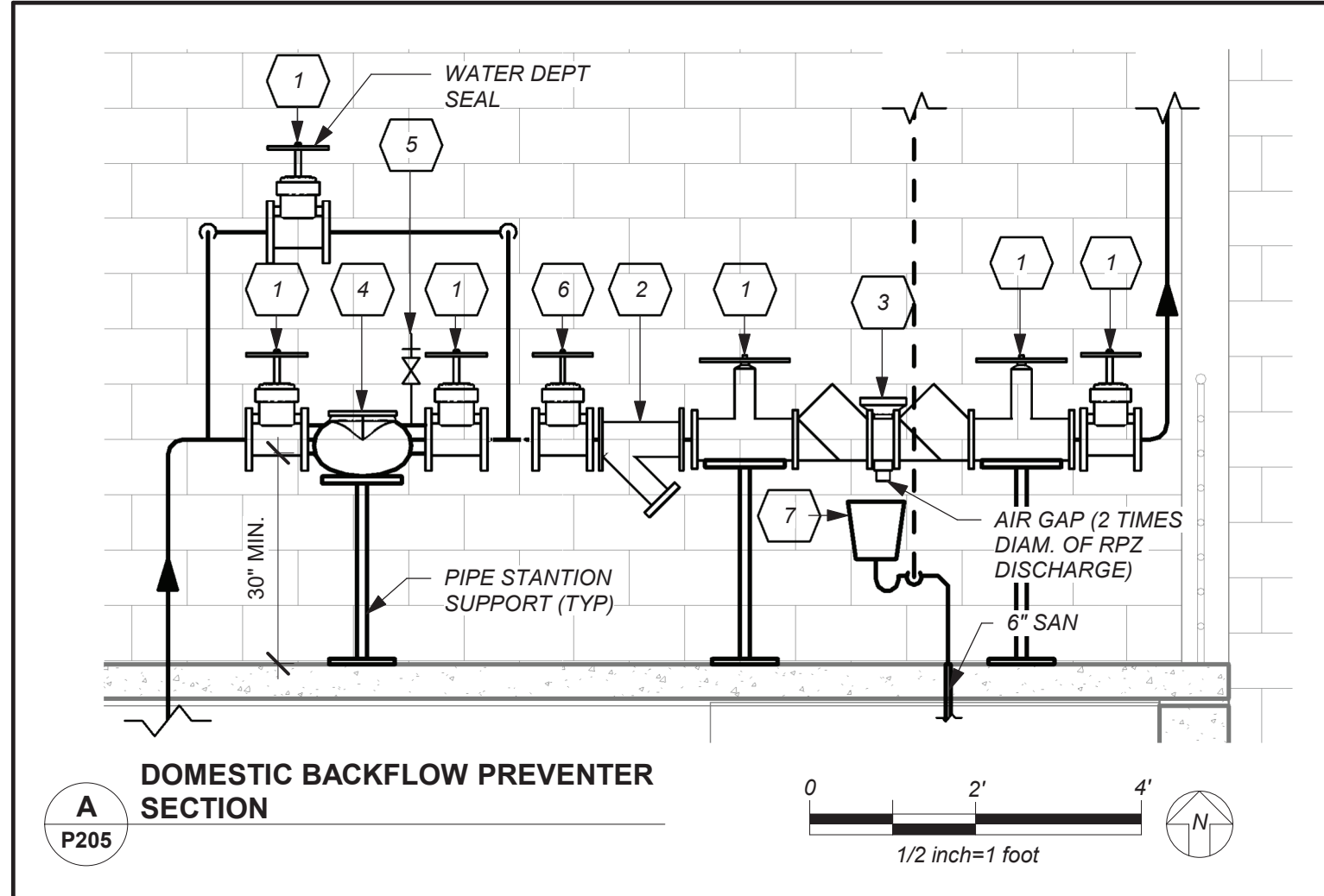
Sheet Number

P205



1 KITCHEN PLAN

0 2' 4'
1/2 inch=1 foot



A DOMESTIC BACKFLOW PREVENTER SECTION

GENERAL NOTES:

1. LOCATION OF BACKFLOW DEVICES SHALL HAVE ADEQUATE HEAT AND LIGHT.
2. BACKFLOW DEVICES SHALL BE PROTECTED FROM FLOODING.
3. BACKFLOW DEVICES AND WATER METER SHALL BE TESTED AFTER INSTALLATION.
4. OWNER SHALL ARRANGE FOR BACKFLOW DEVICES TO BE TESTED ANNUALLY BY A CERTIFIED TESTER.
5. ANY REVISIONS OR ALTERATION OF THESE PLANS WITHOUT THE EXPRESSED WRITTEN CONSENT OF THE SIGNING ENGINEER IS A VIOLATION OF SECTION 7209 OF THE NEW YORK STATE EDUCATION LAW.

BACKFLOW PREVENTER FILING REQUIREMENTS

- A. THIS CONTRACTOR SHALL BE RESPONSIBLE FOR HIRING A LICENSED ENGINEER TO FILE ALL APPLICATIONS, PERMITS AND FILING FEES WITH THE AUTHORITIES HAVING JURISDICTION OVER THE WORK.
- B. THE FOLLOWING LIST SERVES AS THE MINIMUM FILING REQUIREMENTS. FAILURE TO LIST ANY ITEM DOES NOT RELIEVE THE CONTRACTOR FROM FULFILLING THAT REQUIREMENT.
1. CERTIFICATE OF RESOLUTION OF LETTER OF AUTHORIZATION FROM OWNER/USER TO AUTHORIZE LICENSED PROFESSIONAL TO EXECUTE FILING.
 2. PREPARE AND SUBMIT FORM DOH-347 WITH PLANS, PROFESSIONAL ENGINEERS REPORT AND SPECIFICATIONS WITH ENGINEER'S SEAL. FILE WITH HEALTH DEPARTMENT AND WATER DEPARTMENT.
 3. FILING FEES, PER DEVICE.
 4. EVIDENCE OF CONFORMANCE TO NEW YORK STATE SANITARY CODE, PART 5 AND CHAPTER 873 OF THE LAWS OF WESTCHESTER COUNTY.

SIMPLEX PACKAGED GAS BOOSTER SYSTEM SCHEDULE

MARK	LOCATION	BOOSTER INFORMATION AND PERFORMANCE			BOOSTER MOTOR INFORMATION				
		MODEL + FEATURES	MAX FLOW CFH	ADDED BOOST INCHES WC	RPM	HP	VOLTS	PHASE	CYCLES
GB 1	OUTDOOR	E101-PHC-S-NYC-PCFM-REG-GLD-TRNS- COMPLETE WITH PRESSURE COMPENSATED FLOW MODULE, MODE R CONTROLS, OUTLET PRESSURE REGULATOR, AUTO ON-OFF BASE ON BUILDING DEMAND, TOTAL VENTLESS SYSTEM 2" INLET/OUTLET, OUTDOOR STEEL GAS LEAK DETECTION WITH SAFETY SHUT OFF VALVE, TRANSCLOSURE WITH LOCKING DOORS, ALL PER WRITTEN SPECIFICATIONS	1,100	10	3450	1/4	120	1	60

REFER TO FOOD SERVICE DRAWINGS FOR ADDITIONAL PLUMBING WORK UNDER THIS CONTRACT.

BEFORE FABRICATION THIS CONTRACTOR SHALL VERIFY ALL MEASUREMENTS AND CONDITIONS ON JOB AND COORDINATE HIS WORK WITH THE WORK OF ALL OTHER CONTRACTORS

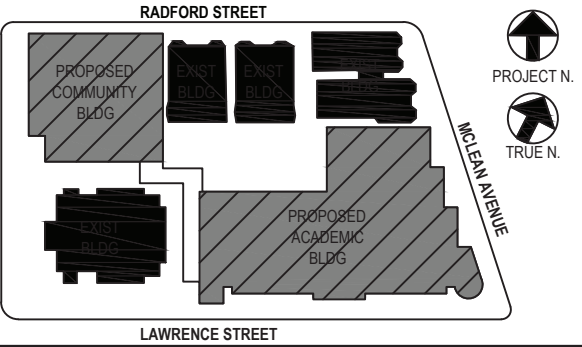
NEW COMMUNITY
SCHOOL AT THE
ST DENIS SITE
YONKERS JOINT SCHOOL
CONSTRUCTION BOARD
121 McLEAN AVENUE
YONKERS, NY 10705

KG+D listen
imagine
build
KG+D . ARCHITECTS PC
285 MAIN STREET MOUNT KISCO . NEW YORK . 10549
P 914.666.5900 KGDARCHITECTS.COM

NY SED PROJECT CONTROL NO.
66-23-00-01-0-346-001

CONSTRUCTION DOCUMENTS

bga
BARILE GALLAGHER & ASSOCIATES
CONSULTING ENGINEERS
59 MARBLE AVE. PLEASANTVILLE, NY 10570
914.328.0660 GENERAL@BGA-ENG.COM WWW.BGA-ENG.COM



NOTE: ALL IDEAS, DESIGN, ARRANGEMENTS AND PLANS INDICATED ON THIS DRAWING ARE THE PROPERTY OF KATYER, GARMENT & DAVIDSON ARCHITECTS, PC. NO PART OF THIS DRAWING SHALL BE USED BY OR DISCLOSED TO ANY PURPOSE WHATSOEVER WITHOUT THE WRITTEN PERMISSION OF KATYER, GARMENT & DAVIDSON ARCHITECTS, PC.

WRITTEN DIMENSIONS ON THIS DRAWING SHALL HAVE PRECEDENCE OVER SCALED DIMENSIONS. CONTRACTOR SHALL VERIFY ALL ACTUAL DIMENSIONS AND CONDITIONS ON THE JOB AND THE ARCHITECT SHALL BE NOTIFIED OF ANY VARIATIONS FROM DIMENSIONS AND CONDITIONS SHOWN. SHOP DETAILS MUST BE SUBMITTED TO THE OFFICE FOR APPROVAL BEFORE PROCEEDING WITH FABRICATION.

ALTERATIONS BY ANY PERSON IN ANY WAY OF ANY ITEM CONTAINED ON THIS DOCUMENT, UNLESS ACTUALLY UNDER THE DIRECTION OF THE LICENSED ARCHITECT WHOSE PROFESSIONAL SEAL IS AFFIXED HERETO, IS A VIOLATION OF TITLE 16, SECTION 2-101 OF THE NEW YORK STATE LAW.

COPYRIGHT KATYER, GARMENT & DAVIDSON ARCHITECTS & ENGINEERS, PC. ALL RIGHTS RESERVED.

Professional Seal

4	11/01/2021	ISSUED TO BID
3	07/14/2021	CONSTRUCTION DOCS-NYSED
2	12/15/2020	DESIGN DEVELOPMENT
1	08/31/2020	SCHEMATIC DESIGN

No. Date Issue

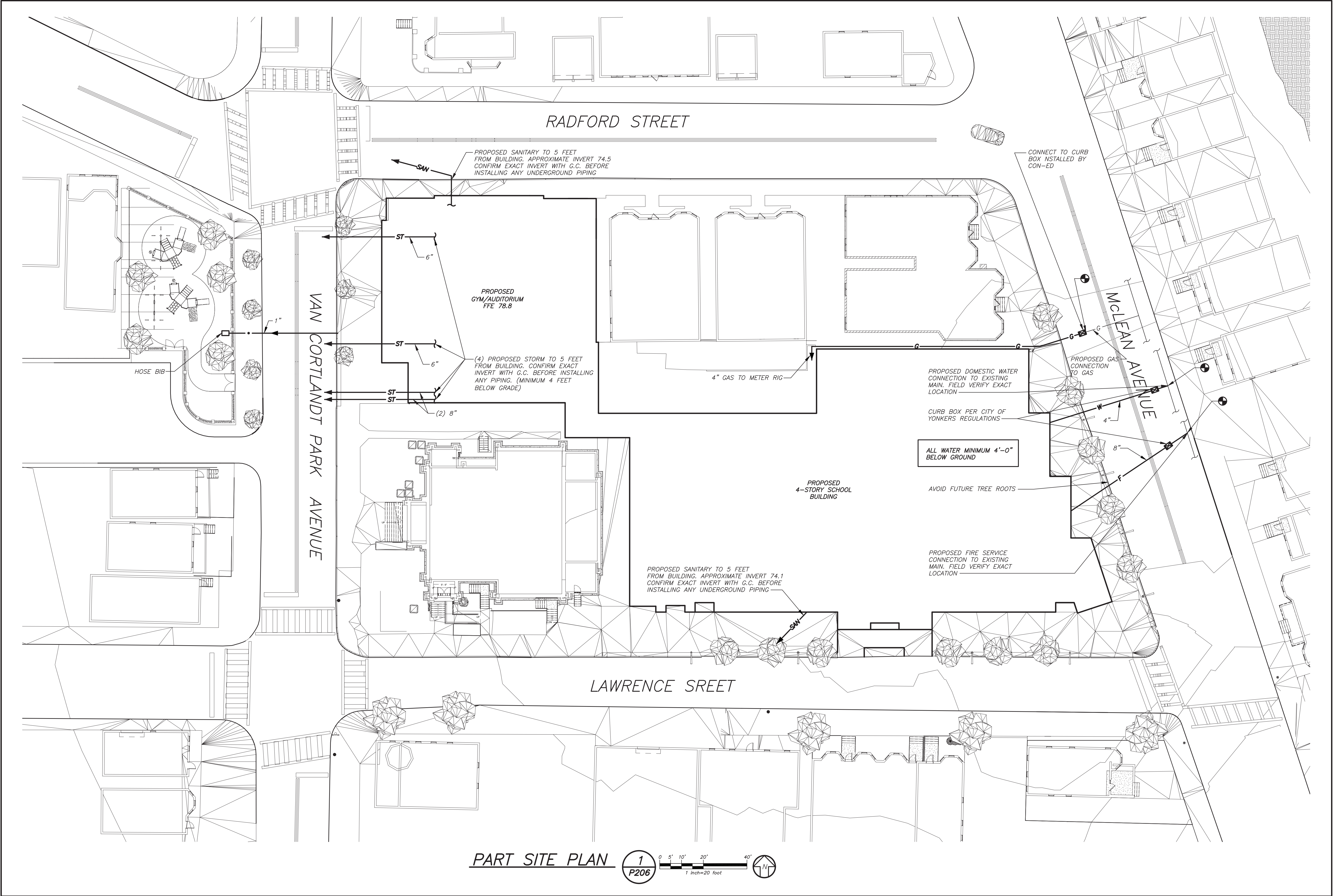
Sheet Title

SITE PLAN

Job No.	Date
2019-1026	11/18/20
Scale	Drawn / Checked
AS NOTED	BGA/BGA

Sheet Number

P206

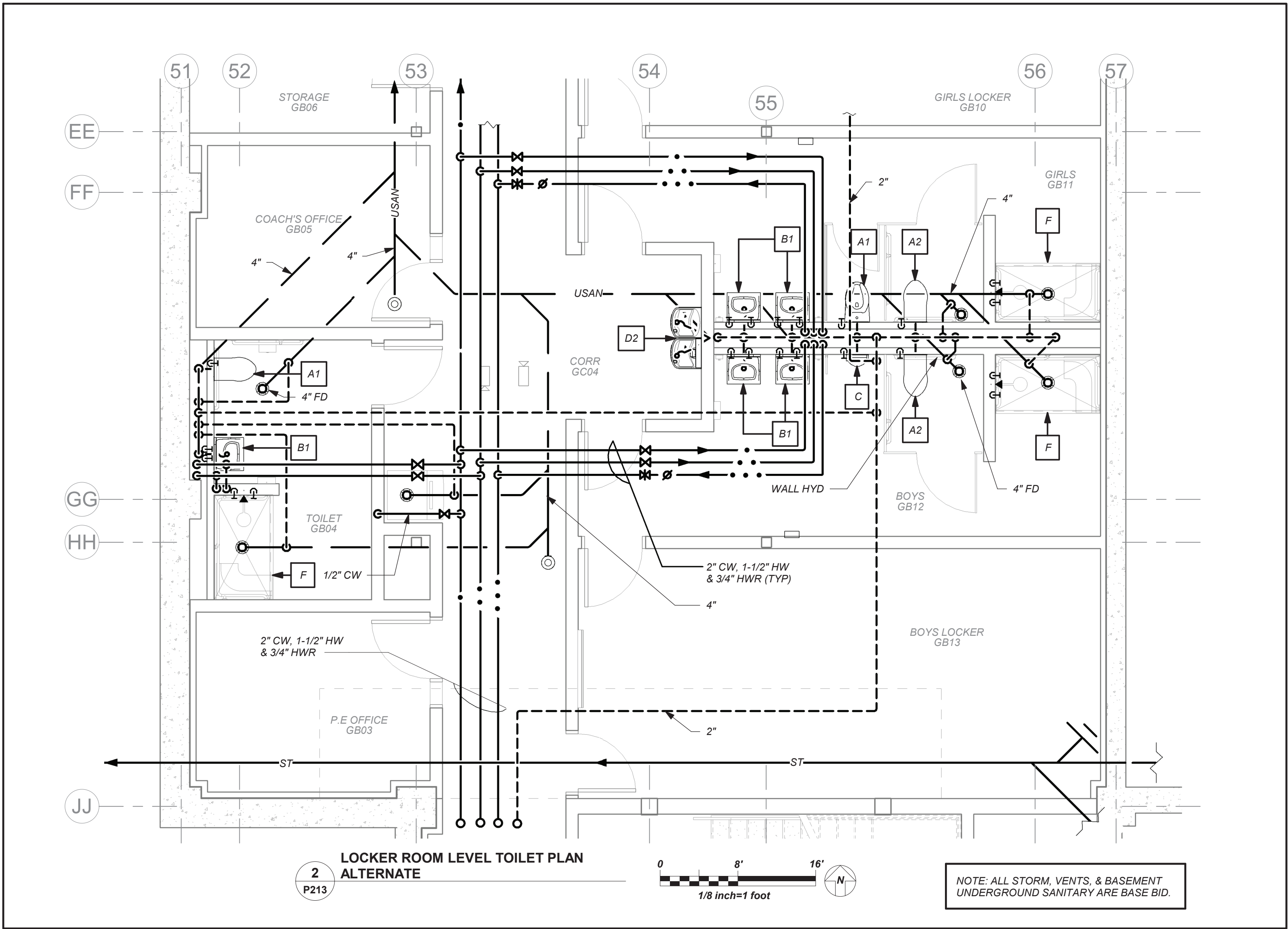
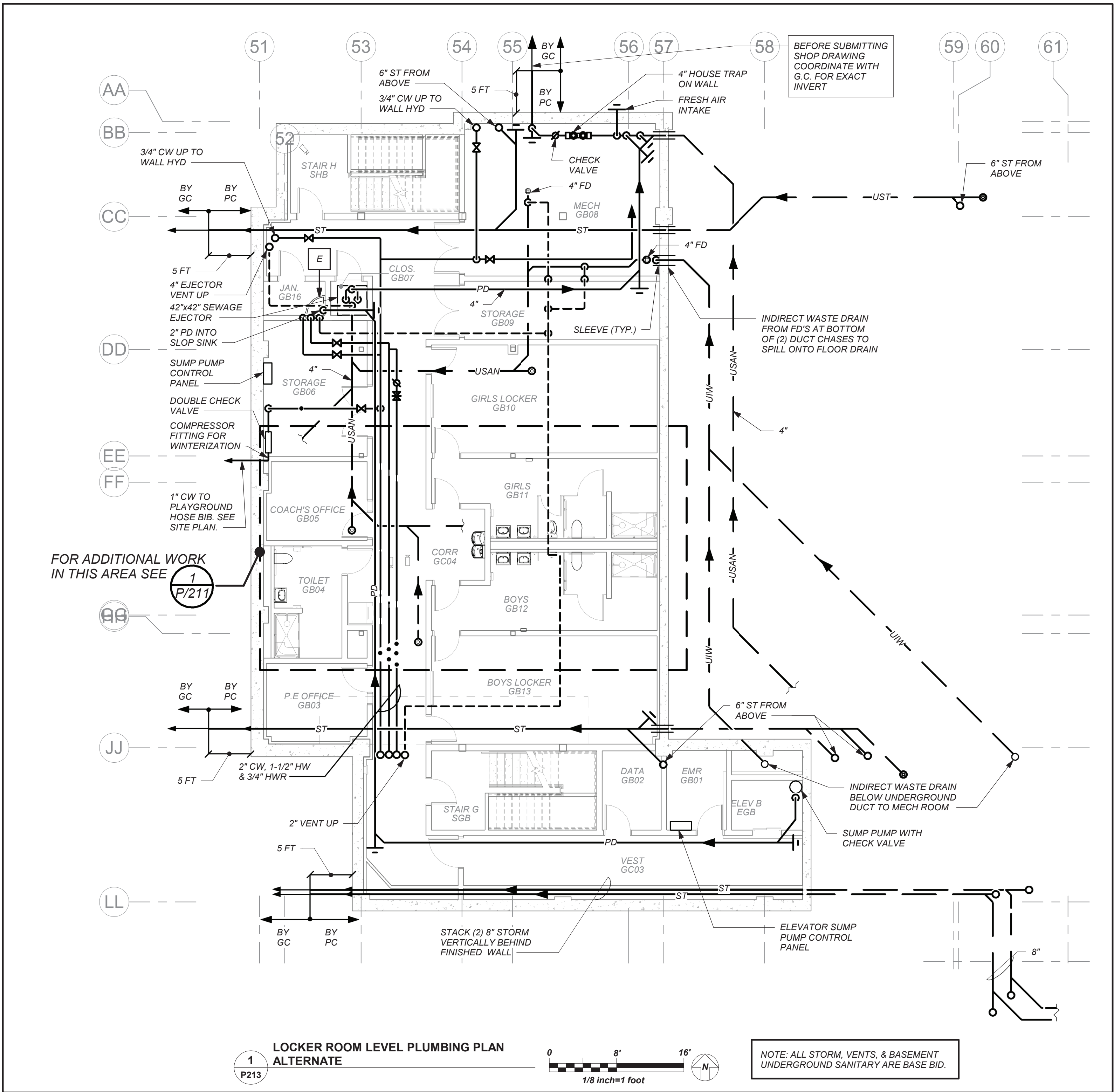


PART SITE PLAN 1 P206 0 5' 10' 20' 40' 1 inch = 20 feet

THIS CONTRACTOR SHALL OBTAIN AND PAY FOR ALL REQUIRED PERMITS FROM THE CITY OF YONKERS. INSTALL GAS AND WATER IN ACCORDANCE WITH ALL UTILITY COMPANY AND CITY REQUIREMENTS AND REGULATIONS. SEE CON-ED YELLOW BOOK. SEE CITY OF YONKERS "ENGINEERING FORMS" FOR METER, TAP, CONNECTIONS AND MISCELLANEOUS, ETC. FOR MORE INFORMATION. SEE FRONT END SPECIFICATION FOR SEPARATION OF CONTRACTOR'S RESPONSIBILITIES.

BEFORE FABRICATION THIS CONTRACTOR SHALL VERIFY ALL MEASUREMENTS AND CONDITIONS ON JOB AND COORDINATE HIS WORK WITH THE WORK OF ALL OTHER CONTRACTORS.

BEFORE FABRICATION THIS CONTRACTOR SHALL
VERIFY ALL MEASUREMENTS AND CONDITIONS ON
JOB AND COORDINATE HIS WORK WITH THE WORK
OF ALL OTHER CONTRACTORS



NEW COMMUNITY SCHOOL AT THE ST DENIS SITE

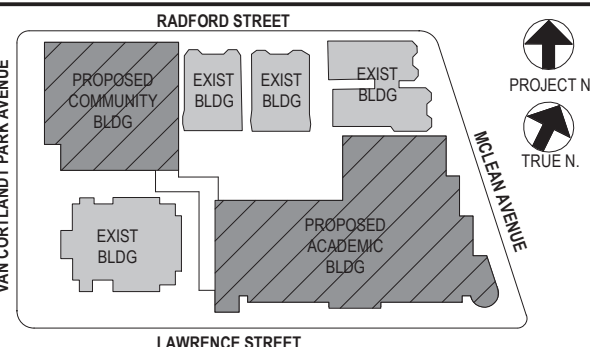
YONKERS JOINT SCHOOL CONSTRUCTION BOARD
121 McLean Avenue
Yonkers, NY 10705



KG+D . ARCHITECTS PC
285 MAIN STREET MOUNT KISCO, NEW YORK, 10549
P.914.666.5900 KGDARCHITECTS.COM

NY SED PROJECT CONTROL NO.
66-23-00-01-0-346-001

CONSTRUCTION DOCUMENTS



NOTE: ALL IDEAS, DESIGN, ARRANGEMENTS AND PLANS INDICATED OR REPRESENTED BY THIS DRAWING ARE OWNED BY AND ARE THE PROPERTY OF KATYER GARRETT & ASSOCIATES ARCHITECTS PC (KGA) AND WERE CREATED FOR USE ON THE PROJECT. NONE OF SUCH IDEAS, DESIGN, ARRANGEMENTS OR PLANS SHALL BE USED BY OR DISCLOSED TO ANY PURPOSE WHATSOEVER WITHOUT THE WRITTEN PERMISSION OF (KGA).

WRITTEN DIMENSIONS ON THIS DRAWING SHALL HAVE PRECEDENCE OVER SCALED DIMENSIONS. CONTRACTOR SHALL VERIFY ALL ACTUAL DIMENSIONS AND CONDITIONS ON THE JOB AND THE ARCHITECT MUST BE NOTIFIED OF ANY VARIATIONS FROM DIMENSIONS AND CONDITIONS SHOWN. SHOP DETAILS MUST BE SUBMITTED TO THIS OFFICE FOR APPROVAL BEFORE PROCEEDING WITH FABRICATION.

ALTERATIONS BY ANY PERSON, IN ANY WAY, OF ANY ITEM CONTAINED ON THIS DOCUMENT, UNLESS ACTING UNDER THE DIRECTION OF THE LICENSED ARCHITECT, ENGINEER, PROFESSIONAL, SEAL, OR FINISHED HEREIN, IS A VIOLATION OF TITLE 16, SECTION 16-1.5 OF NEW YORK STATE LAW.

COPYRIGHT KATYER GARRETT & ASSOCIATES ARCHITECTS & ENGINEERS, PC. ALL RIGHTS RESERVED.

Professional Seal

4	11/01/2021	ISSUED TO BID
3	07/14/2021	CONSTRUCTION DOCS-NYSED
2	12/15/2020	DESIGN DEVELOPMENT
1	08/31/2020	SCHEMATIC DESIGN

No. Date Issue

Sheet Title

Community Wing Basement - Add Alt -
Gym Basement Fit-Out Plan

Job No. 2019-1026 Date 11/03/21

Scale AS NOTED Drawn / Checked BGA / BGA

Sheet Number

P213

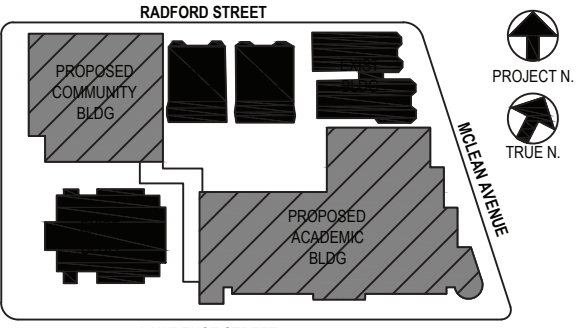
NEW COMMUNITY
SCHOOL AT THE
ST DENIS SITE
YONKERS JOINT SCHOOL
CONSTRUCTION BOARD
121 McLEAN AVENUE
YONKERS, NY 10705

KG+D listen
imagine
build
KG+D . ARCHITECTS PC
285 MAIN STREET MOUNT KISCO . NEW YORK . 10549
P.914.666.5900 KGDARCHITECTS.COM

NY SED PROJECT CONTROL NO.
66-23-00-01-0-346-001

CONSTRUCTION DOCUMENTS

bga
BARILE GALLAGHER & ASSOCIATES
CONSULTING ENGINEERS
59 MARBLE AVE. PLEASANTVILLE, NY 10570
914.328.0660 GENSRAL@BGA-ENG.COM WWW.BGA-ENG.COM



NOTE: ALL IDEAS, DESIGNS, ARRANGEMENTS AND PLANS INDICATED ON THIS DRAWING ARE THE PROPERTY OF KAYEYER, GARMENT & DAVIDSON ARCHITECTS, P.C. (KGD) AND WERE CREATED FOR USE ON THE PROJECT HEREIN. NO OTHER IDEAS, DESIGNS, ARRANGEMENTS OR PLANS SHALL BE USED BY OR DISCLOSED TO ANY PURPOSE WHATSOEVER WITHOUT THE WRITTEN PERMISSION OF KGD.

WRITTEN DIMENSIONS ON THIS DRAWING SHALL PREVAIL OVER SCALED DIMENSIONS. CONTRACTOR SHALL VERIFY ALL ACTUAL DIMENSIONS AND CONDITIONS ON THE JOB AND THE ARCHITECT SHALL BE NOTIFIED OF ANY VARIATIONS FROM DIMENSIONS AND CONDITIONS SHOWN. SHOP DETAILS MUST BE SUBMITTED TO THE OFFICE FOR APPROVAL BEFORE PROCEEDING WITH FABRICATION.

ALTERATIONS BY ANY PERSON IN ANY WAY OF ANY ITEM CONTAINED ON THIS DOCUMENT, UNLESS ACTUALLY UNDER THE DIRECTION OF THE LICENSED ARCHITECT WHOSE PROFESSIONAL SEAL IS AFFIXED HERETO, IS A VIOLATION OF TITLE 16, SECTION 2-101 OF THE NEW YORK STATE LAW.

COPYRIGHT KAYEYER, GARMENT & DAVIDSON ARCHITECTS & ENGINEERS, P.C. ALL RIGHTS RESERVED.

Professional Seal

4	11/01/2021	ISSUED TO BID
3	07/14/2021	CONSTRUCTION DOCS-NYSED
2	12/15/2020	DESIGN DEVELOPMENT
1	08/31/2020	SCHEMATIC DESIGN

No. Date Issue

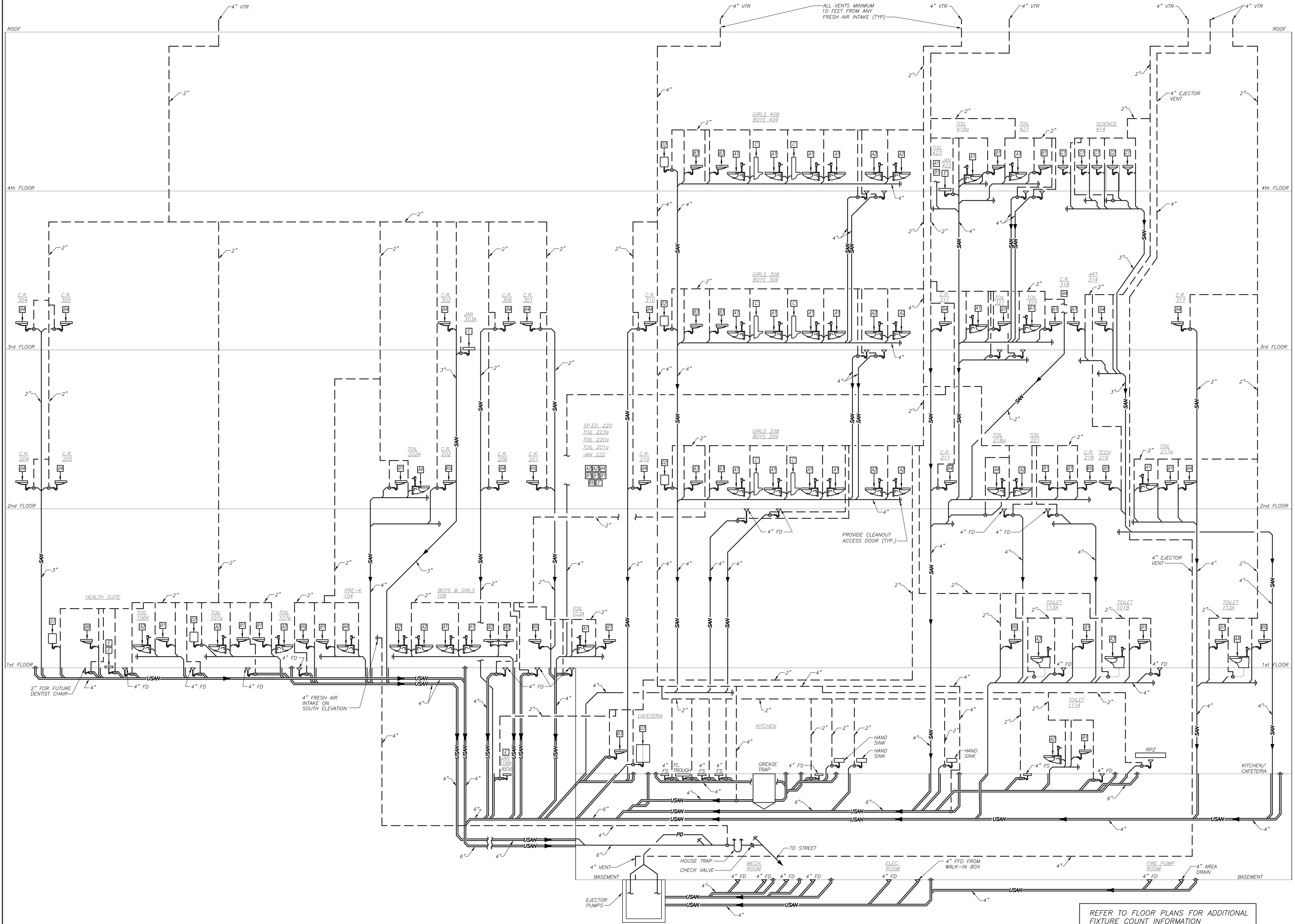
Sheet Title

ACADEMIC BUILDING
SCHEMATIC SANITARY
RISER DIAGRAM

Job No. 2019-1026 Date 11/18/20
Scale AS NOTED Drawn / Checked BGA/BGA

Sheet Number

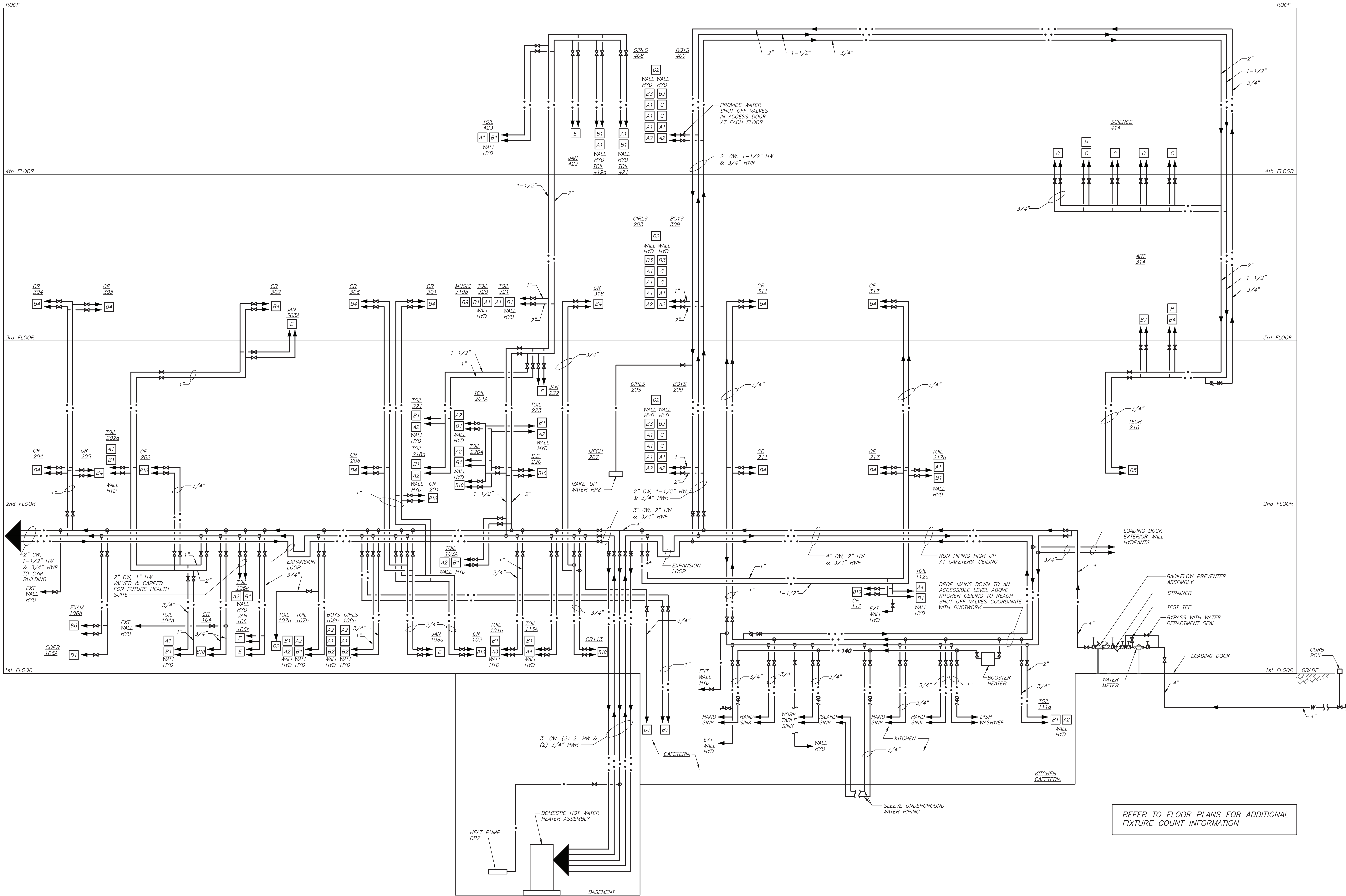
P400



ACADEMIC BUILDING SCHEMATIC SANITARY RISER DIAGRAM

1
P400 NO SCALE

BEFORE FABRICATION THIS CONTRACTOR SHALL
VERIFY ALL MEASUREMENTS AND CONDITIONS ON
JOB AND COORDINATE HIS WORK WITH THE WORK
OF ALL OTHER CONTRACTORS.



ACADEMIC BUILDING DOMESTIC WATER SCHEMATIC RISER DIAGRAM

1

P401

NO SCALE

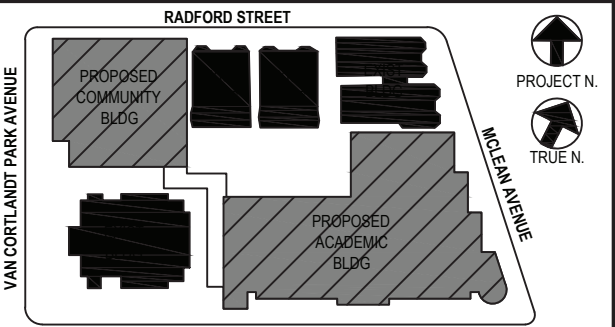
BEFORE FABRICATION THIS CONTRACTOR SHALL VERIFY ALL MEASUREMENTS AND CONDITIONS ON JOB AND COORDINATE HIS WORK WITH THE WORK OF ALL OTHER CONTRACTORS.

NEW COMMUNITY
SCHOOL AT THE
ST DENIS SITE
YONKERS JOINT SCHOOL
CONSTRUCTION BOARD
121 McLEAN AVENUE
YONKERS, NY 10705

KG+D listen
imagine
build
KG+D . ARCHITECTS PC
285 MAIN STREET MOUNT KISCO . NEW YORK . 10549
P.914.666.5900 KGDARCHITECTS.COM

NY SED PROJECT CONTROL NO.
66-23-00-01-0-346-001

CONSTRUCTION DOCUMENTS
bga
BARILE GALLAGHER & ASSOCIATES
CONSULTING ENGINEERS
59 MARBLE AVE. PLEASANTVILLE, NY 10570
914.328.0660 GENSRAL@BGA-ENG.COM WWW.BGA-ENG.COM



NOTE: ALL IDEAS, DESIGN, ARRANGEMENTS AND PLANS INDICATED OR REPRESENTED BY THIS DRAWING ARE OWNED BY AND ARE THE PROPERTY OF KAYEYER, GARMENT & DAVIDSON ARCHITECTS, P.C. (KGD). ANY REUSE OR REPRODUCTION OF THIS DRAWING OR ANY PART THEREOF WITHOUT THE WRITTEN PERMISSION OF KGD IS A VIOLATION OF TITLE 16, SECTION 17-01 OF THE NEW YORK STATE LAW. COPYRIGHT KAYEYER, GARMENT & DAVIDSON ARCHITECTS & ENGINEERS, P.C. ALL RIGHTS RESERVED.

WRITTEN DIMENSIONS ON THIS DRAWING SHALL HAVE PRECEDENCE OVER SCALED DIMENSIONS. CONTRACTOR SHALL VERIFY ALL ACTUAL DIMENSIONS AND CONDITIONS ON THE JOB AND THE ARCHITECT SHALL BE NOTIFIED OF ANY VARIATIONS FROM DIMENSIONS AND CONDITIONS SHOWN. SHOP DETAILS MUST BE SUBMITTED TO THE OFFICE FOR APPROVAL BEFORE PROCEEDING WITH FABRICATION.

ALTERATIONS BY ANY PERSON IN ANY WAY OF ANY ITEM CONTAINED IN THIS DOCUMENT, UNLESS ACTING UNDER THE DIRECTION OF THE LICENSED ARCHITECT WHOSE PROFESSIONAL SEAL IS AFFIXED HERETO, IS A VIOLATION OF TITLE 16, SECTION 17-01 OF THE NEW YORK STATE LAW. COPYRIGHT KAYEYER, GARMENT & DAVIDSON ARCHITECTS & ENGINEERS, P.C. ALL RIGHTS RESERVED.

Professional Seal

4	11/01/2021	ISSUED TO BID
3	07/14/2021	CONSTRUCTION DOCS-NYSED
2	12/15/2020	DESIGN DEVELOPMENT
1	08/31/2020	SCHEMATIC DESIGN

No. Date Issue
Sheet Title

ACADEMIC BUILDING
DOMESTIC WATER
SCHEMATIC
RISER DIAGRAM

Job No.	Date
2019-1026	11/18/20
Scale	Drawn / Checked
AS NOTED	BGA/BGA

Sheet Number

P401