

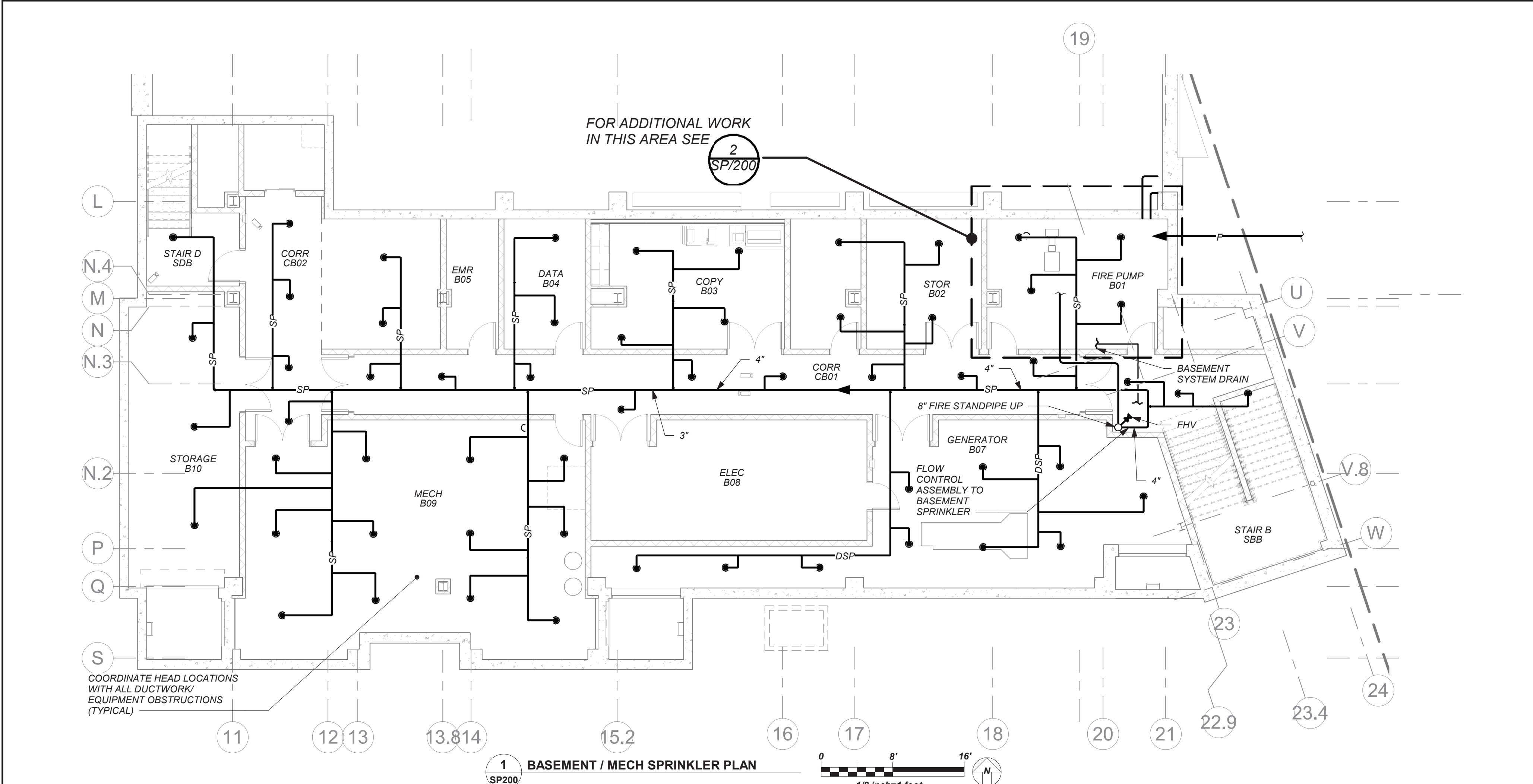
| LIST OF BACKFLOW PREVENTER APPURTENANCES |                                                             |
|------------------------------------------|-------------------------------------------------------------|
| MARK                                     | DESCRIPTION                                                 |
| 1                                        | RESILIENT SEATED GATE VALVE                                 |
| 1A                                       | TAMPER PROOF RESILIENT SEATED GATE VALVE WITH TAMPER SWITCH |
| 2                                        | STRAINER                                                    |
| 3                                        | 4" RPZ BACKFLOW PREVENTER - WATTS SERIES 909                |
| 4                                        | WATER METER (PER WATER DEPARTMENT)                          |
| 5                                        | 2" TEST OUTLET VALVE                                        |
| 6                                        | PRESSURE REDUCING VALVE                                     |
| 7                                        | AIR GAP (JR SMITH 3955)                                     |
| 8                                        | FUNNEL (JR SMITH 3811)                                      |
| 9                                        | 8" DOUBLE CHECK DETECTOR ASSEMBLY-WATTS SERIES 709 DCDA     |

#### GENERAL NOTES:

1. LOCATION OF BACKFLOW DEVICES SHALL HAVE ADEQUATE HEAT AND LIGHT.
2. BACKFLOW DEVICES SHALL BE PROTECTED FROM FLOODING.
3. BACKFLOW DEVICES AND WATER METER SHALL BE TESTED AFTER INSTALLATION.
4. OWNER SHALL ARRANGE FOR BACKFLOW DEVICES TO BE TESTED ANNUALLY BY A CERTIFIED TESTER.
5. ANY REVISIONS OR ALTERATION OF THESE PLANS WITHOUT THE EXPRESSED WRITTEN CONSENT OF THE SIGNING ENGINEER IS A VIOLATION OF SECTION 7209 OF THE NEW YORK STATE EDUCATION LAW.

#### BACKFLOW PREVENTER FILING REQUIREMENTS

- A. THIS CONTRACTOR SHALL BE RESPONSIBLE FOR HIRING A LICENCED ENGINEER TO FILE ALL APPLICATIONS PERMITS AND FILING FEES WITH THE AUTHORITIES HAVING JURISDICTION OVER THE WORK.
- B. THE FOLLOWING LIST SERVES AS THE MINIMUM FILING REQUIREMENTS, FAILURE TO LIST ANY ITEM DOES NOT RELIEVE THE CONTRACTOR FROM FULFILLING THAT REQUIREMENT.
1. CERTIFICATE OF RESOLUTION OF LETTER OF AUTHORIZATION FROM OWNER/USER TO AUTHORIZE LICENCED PROFESSIONAL TO EXECUTE FILING.
  2. PREPARE AND SUBMIT FORM DOH-347 WITH PLANS, PROFESSIONAL ENGINEERS REPORT AND SPECIFICATIONS WITH ENGINEER'S SEAL. FILE WITH HEALTH DEPARTMENT AND WATER DEPARTMENT.
  3. FILING FEES, PER DEVICE.
  4. EVIDENCE OF CONFORMANCE TO NEW YORK STATE SANITARY CODE, PART 5 AND CHAPTER 873 OF THE LAWS OF WESTCHESTER COUNTY.



| LEGEND |                                                    |
|--------|----------------------------------------------------|
|        | EXISTING PIPING, FIXTURES, ETC. TO REMAIN          |
|        | EXISTING PIPING, FIXTURES, ETC. TO BE REMOVED      |
|        | NEW PIPING, FIXTURES, ETC.                         |
|        | WATER SERVICE PIPING EXTERIOR                      |
|        | GAS PIPING                                         |
|        | FLOW DIRECTION WITHIN PIPE                         |
|        | SHUT-OFF VALVE, GATE VALVE                         |
|        | COMBINATION BALANCING & SHUT-OFF VALVE             |
|        | CHECK VALVE                                        |
|        | PIPE CONNS. (BOTTOM, TOP 45 OR 90; PIPE UP)        |
|        | PUMP DISCHARGE                                     |
|        | SPRINKLER PIPING                                   |
|        | DRY SPRINKLER PIPING                               |
|        | FIRE SERVICE PIPING (EXTERIOR)                     |
|        | SPRINKLER HEAD                                     |
|        | SIDEWALL SPRINKLER HEAD                            |
|        | FIRE HOSE VALVE & PRV ASSEMBLY                     |
|        | VENT THRU ROOF                                     |
|        | FRESH AIR INTAKE                                   |
|        | FLOOR DRAIN                                        |
|        | PRESSURE REDUCING VALVE/ PRESSURE REGULATING VALVE |
|        | PLUMBING CONTRACTOR                                |
|        | GENERAL CONTRACTOR                                 |
|        | POINT OF CONNECTION                                |
|        | POINT OF DISCONNECTION                             |
|        | BACKFLOW PREVENTER APPURTENANCE IDENTIFICATION     |
|        | PART PLAN, DETAIL, SECTION NUMBER                  |
|        | SECTION IDENTIFICATION                             |

#### SPRINKLER GENERAL NOTES

- CONTRACTOR SHALL NOT CUT ANY STRUCTURAL MEMBERS WITHOUT APPROVAL BY THE ARCHITECT. COORDINATE WITH OTHER PLUMBING AND DUCTWORK.
- CONTRACTOR SHALL FURNISH AND INSTALL ALL PIPING VALVES, HEADS, TESTS, HANGERS, FITTINGS ANY MISCELLANEOUS COMPONENTS TO RENDER THE SPRINKLER SYSTEM COMPLETE, OPERABLE AND IN ACCORDANCE WITH APPLICABLE CODES AND GENERALLY ACCEPTED INDUSTRY STANDARDS.

#### FIRE PROTECTION DESIGN SUMMARY (WET SYSTEM)

OCCUPANCY CLASSIFICATION: (NFPA 13)  
ALL AREAS (EXCEPT AS NOTED BELOW): LIGHT HAZARD  
MISCELLANEOUS STORAGE: ORDINARY HAZARD GROUP 1

#### SPRINKLER SYSTEM TESTS

1. HYDROSTATIC - 200 PSI FOR 2 HOURS WITHOUT LOSS OF PRESSURE.
2. SYSTEM OPERATIONAL TESTS - WATER FLOW DETECTING DEVICES.
3. CONTRACTOR SHALL PERFORM ALL SPRINKLER SYSTEM TESTS REQUIRED BY LOCAL FIRE INSPECTOR OR AUTHORITY HAVING JURISDICTION.
4. ALL TESTS SHALL BE WITNESSED BY LOCAL FIRE INSPECTOR OR AUTHORITY HAVING JURISDICTION. SUBMIT REPORT ON ALL TESTS TO LOCAL FIRE INSPECTOR AND ENGINEER FOR APPROVAL.

#### SCHEDULE OF SPRINKLER BRANCH PIPING SIZES

| PIPE SIZE | MAX # OF SPRINKLER HEADS |
|-----------|--------------------------|
| 1"        | 2                        |
| 1-1/4"    | 3                        |
| 1-1/2"    | 5                        |
| 2"        | 10                       |
| 2-1/2"    | 20                       |
| 3"        | 40                       |

#### NOTES

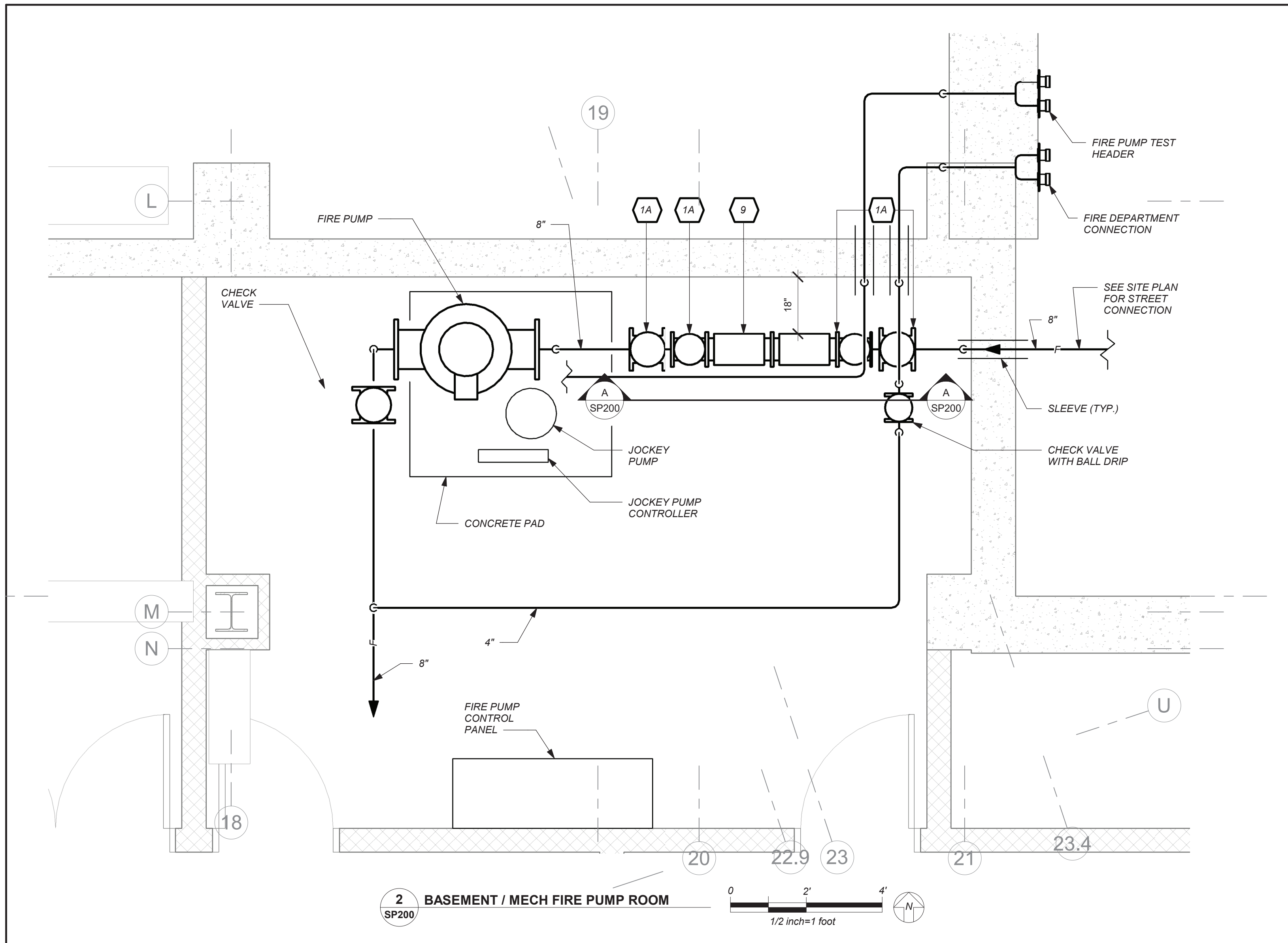
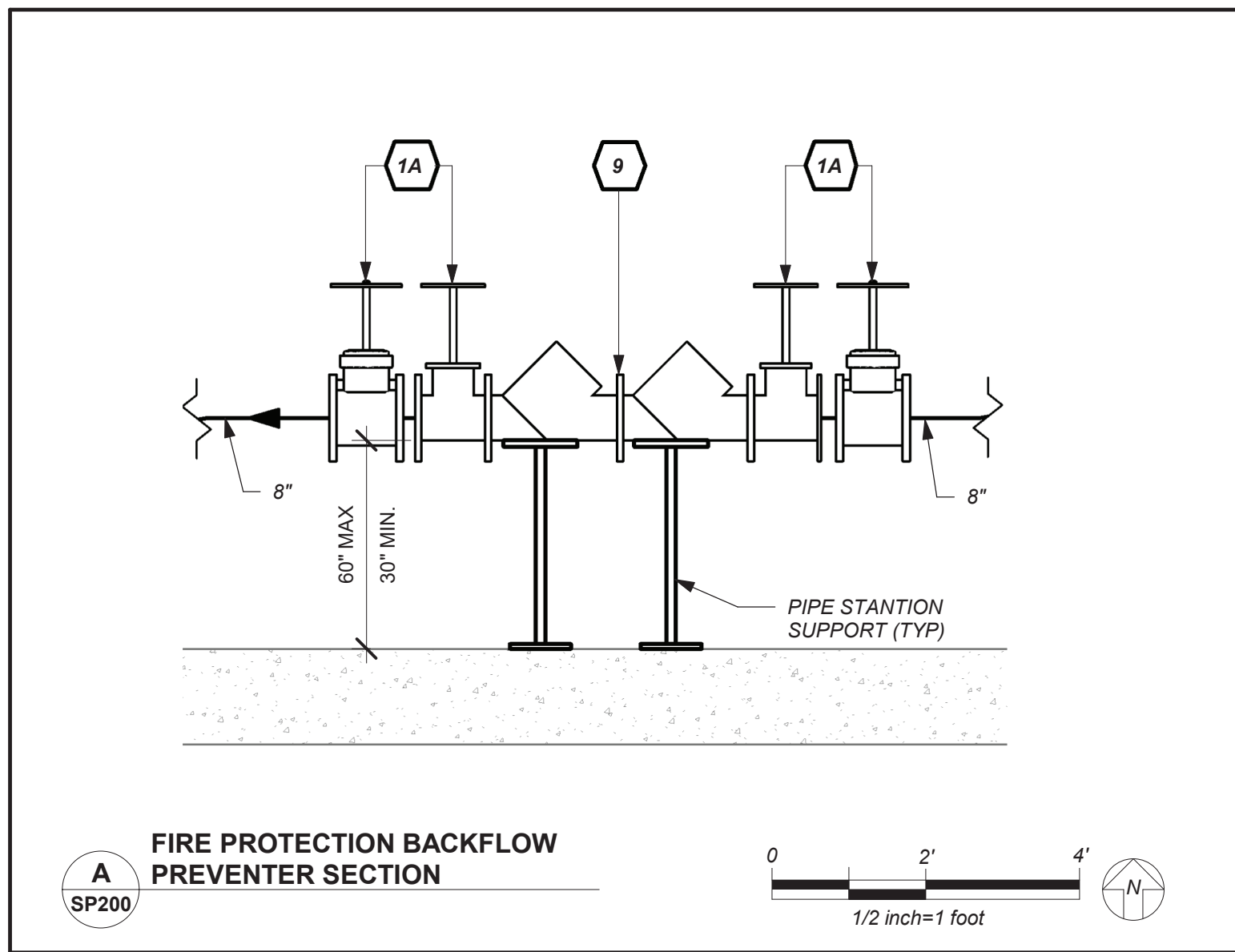
- MAINS HAVE BEEN SHOWN. CONTRACTOR TO PROVIDE BRANCH PIPING BASED ON NFPA-13 PIPE SCHEDULE METHOD OF PIPE SIZING. HYDRAULIC METHOD WILL BE ACCEPTABLE AS WELL. SUBMIT SHOP DRAWINGS AND HYDRAULIC CALCULATIONS.

#### BUILDING STRUCTURE FIREPROOFING:

THE BUILDING STRUCTURE WILL BE PROTECTED BY 2" FIREPROOFING THROUGHOUT. THIS CONTRACTOR SHALL ISSUE COORDINATION DRAWINGS ACCORDING TO THE STRICT SCHEDULE OUTLINED IN THE "FRONT END" DOCUMENTS. ALL HANGERS FOR PIPING, CONDUIT, DUCTWORK, EQUIPMENT, ETC. MUST BE IN PLACE BEFORE FIREPROOFING TAKES PLACE. THE INSTALLATION OF HANGERS AFTER THE FACT THAT REQUIRES THE RE-APPLICATION OF FIREPROOFING WILL BE AT THE EXPENSE OF THIS CONTRACTOR.

#### BASEMENT WATERPROOFING:

REFER TO STRUCTURAL DRAWINGS AND ARCHITECTURAL DRAWINGS FOR SLAB/ WALL THICKNESS AND PENETRATION DETAILS. COORDINATE WITH G.C.



## NEW COMMUNITY SCHOOL AT THE ST DENIS SITE

YONKERS JOINT SCHOOL CONSTRUCTION BOARD  
121 McLean Avenue  
Yonkers, NY 10705



KG+D . ARCHITECTS PC  
285 MAIN STREET MOUNT KISCO, NEW YORK, 10549  
P.914.666.5900 KGDARCHITECTS.COM

NY SED PROJECT CONTROL NO.

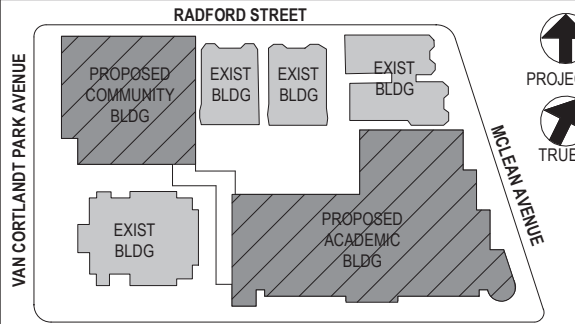
66-23-00-01-0-346-001

CONSTRUCTION DOCUMENTS



BARILE GALLAGHER & ASSOCIATES

CONSULTING ENGINEERS  
99 MARBLE AVE. PLEASANTVILLE, NY 10570  
914.326.0099 GENERAL@BGA-ENG.COM WWW.BGA-ENG.COM



NOTE: ALL IDEAS, DESIGN, ARRANGEMENTS AND PLANS INDICATED OR REPRESENTED BY THIS DRAWING ARE OWNED BY AND ARE THE PROPERTY OF YONKERS JOINT SCHOOL CONSTRUCTION BOARD. NO PART OF THIS DRAWING SHALL BE REPRODUCED OR TRANSMITTED IN ANY FORM OR BY ANY MEANS, ELECTRONIC OR MECHANICAL, INCLUDING PHOTOCOPYING, RECORDING, OR BY ANY INFORMATION STORAGE AND RETRIEVAL SYSTEM, WITHOUT THE WRITTEN PERMISSION OF KGAD.

WRITTEN DIMENSIONS ON THIS DRAWING SHALL HAVE PRECEDENCE OVER SCALED DIMENSIONS. CONTRACTOR SHALL VERIFY ALL ACTUAL DIMENSIONS AND CONDITIONS ON THE JOB AND THE ARCHITECT MUST BE NOTIFIED OF ANY VARIATIONS FROM DIMENSIONS AND CONDITIONS SHOWN. SHOP DETAILS MUST BE SUBMITTED TO THIS OFFICE FOR APPROVAL BEFORE PROCEEDING WITH FABRICATION.

ALTERATIONS BY ANY PERSON IN ANY WAY OF ANY ITEM CONTAINED ON THIS DOCUMENT, UNLESS ACTING UNDER THE DIRECTION OF THE LICENSED ARCHITECT, ENGINEER, PROFESSIONAL SEAL, IS A VIOLATION OF TITLE 16, SECTION 16-1.5 OF THE NEW YORK STATE LAW. COPYRIGHT 2021 BY YONKERS JOINT SCHOOL CONSTRUCTION BOARD. ALL RIGHTS RESERVED.

Professional Seal

|     |            |                         |
|-----|------------|-------------------------|
| 4   | 11/01/2021 | ISSUED TO BID           |
| 3   | 07/14/2021 | CONSTRUCTION DOCS-NYSED |
| 2   | 12/15/2020 | DESIGN DEVELOPMENT      |
| 1   | 08/31/2020 | SCHEMATIC DESIGN        |
| No. | Date       | Issue                   |

Sheet Title

Legend, Schedule, Notes, and  
Basement Floor Sprinkler Plan

Job No. 2019-1026 Date 11/17/20

Scale AS NOTED Drawn / Checked BGA /BGA

Sheet Number

SP200



NEW COMMUNITY  
SCHOOL AT THE  
ST DENIS SITE

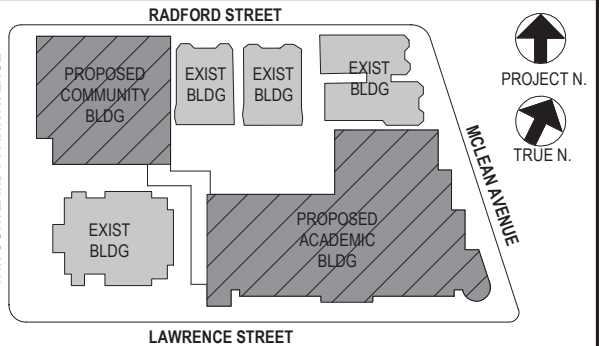
YONKERS JOINT SCHOOL  
CONSTRUCTION BOARD  
121 McLean Avenue  
Yonkers, NY 10705



KG+D . ARCHITECTS PC  
285 MAIN STREET MOUNT KISCO, NEW YORK, 10549  
P.914.666.5900 KGDARCHITECTS.COM

NY SED PROJECT CONTROL NO.  
66-23-00-01-0-346-001

CONSTRUCTION DOCUMENTS



NOTE: ALL IDEAS, DESIGN ARRANGEMENTS AND PLANS INDICATED OR REPRESENTED BY THIS DRAWING ARE OWNED BY AND ARE THE PROPERTY OF KATYER GARRETT & ASSOCIATES ARCHITECTS, P.C. (KGA) AND WERE CREATED FOR USE ON THE PROJECT. NONE OF SUCH IDEAS, DESIGNS, ARRANGEMENTS OR PLANS SHALL BE USED BY OR DISCLOSED TO ANY PURPOSE WHATSOEVER WITHOUT THE WRITTEN PERMISSION OF (KGA).

WRITTEN DIMENSIONS ON THIS DRAWING SHALL HAVE PRECEDENCE OVER SCALED DIMENSIONS. CONTRACTOR SHALL VERIFY ALL ACTUAL DIMENSIONS AND CONDITIONS ON THE JOB AND THE ARCHITECT MUST BE NOTIFIED OF ANY VARIATIONS FROM DIMENSIONS AND CONDITIONS SHOWN. SHOP DETAILS MUST BE SUBMITTED TO THIS OFFICE FOR APPROVAL BEFORE PROCEEDING WITH FABRICATION.

ALTERATIONS BY ANY PERSON, IN ANY WAY, OF ANY ITEM CONTAINED ON THIS DOCUMENT, UNLESS ACTING UNDER THE DIRECTION OF THE LICENSED ARCHITECT, WHOSE PROFESSIONAL SEAL IS AFFIXED HERETO, IS A VIOLATION OF TITLE 16, SECTION 16-1.5 OF NEW YORK STATE LAW.

COPYRIGHT KATYER GARRETT & ASSOCIATES ARCHITECTS & ENGINEERS, P.C. ALL RIGHTS RESERVED.

Professional Seal

|   |            |                         |
|---|------------|-------------------------|
| 4 | 11/01/2021 | ISSUED TO BID           |
| 3 | 07/14/2021 | CONSTRUCTION DOCS-NYSED |
| 2 | 12/15/2020 | DESIGN DEVELOPMENT      |
| 1 | 08/31/2020 | SCHEMATIC DESIGN        |

No. Date Issue

Sheet Title

1st Floor Plan

Job No. 2019-1026 Date 11/17/20  
Scale AS NOTED Drawn / Checked BGA /BGA

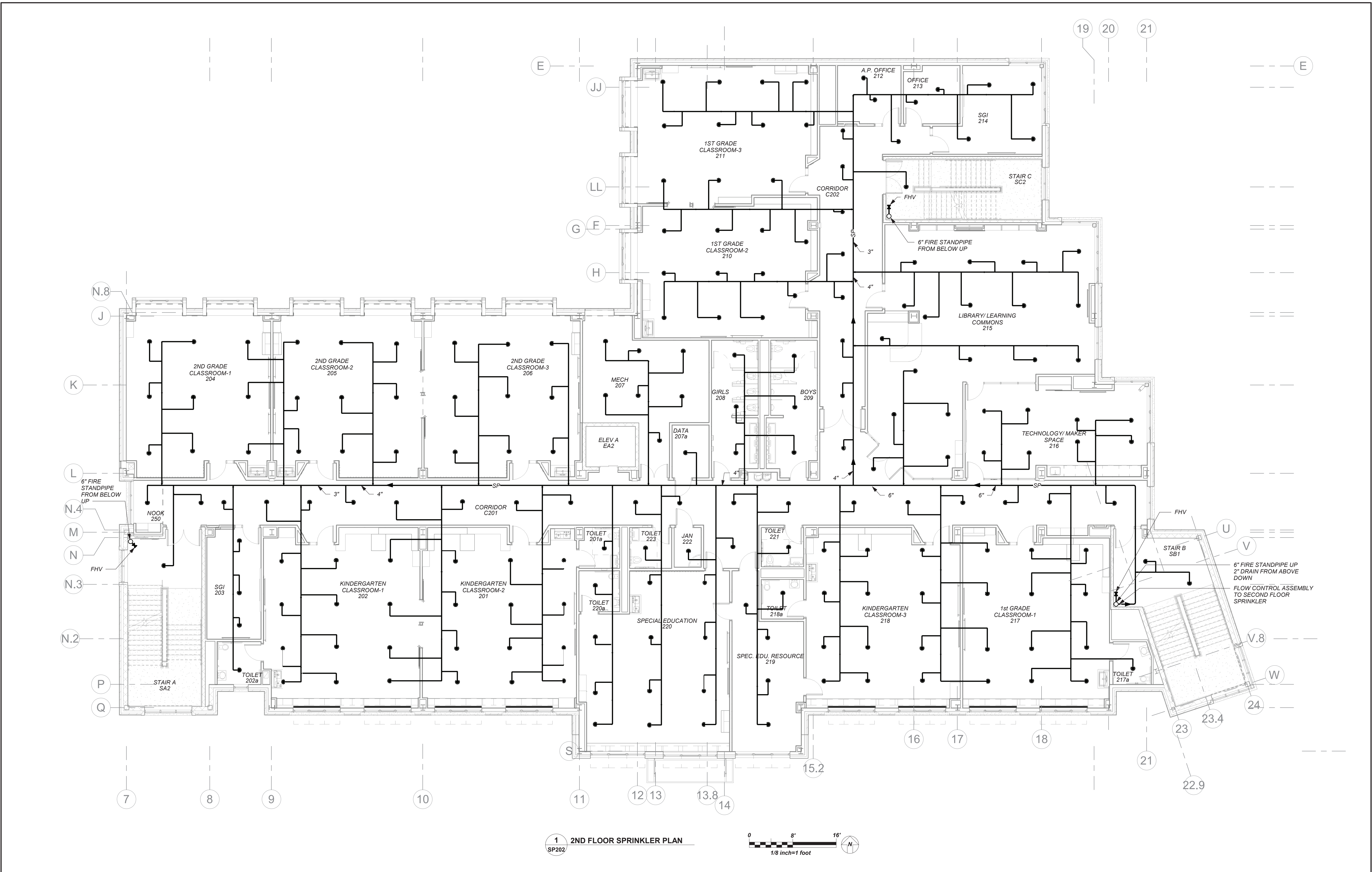
Sheet Number

SP201

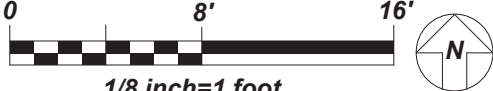
BEFORE FABRICATION THIS CONTRACTOR SHALL  
VERIFY ALL MEASUREMENTS AND CONDITIONS ON  
JOB AND COORDINATE HIS WORK WITH THE WORK  
OF ALL OTHER CONTRACTORS



BEFORE FABRICATION THIS CONTRACTOR SHALL  
VERIFY ALL MEASUREMENTS AND CONDITIONS ON  
JOB AND COORDINATE HIS WORK WITH THE WORK  
OF ALL OTHER CONTRACTORS



1 2ND FLOOR SPRINKLER PLAN  
SP202



# NEW COMMUNITY SCHOOL AT THE ST DENIS SITE

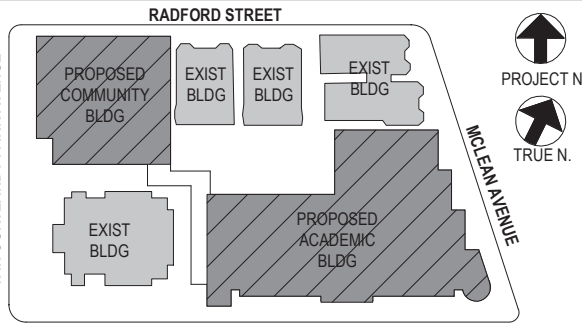
YONKERS JOINT SCHOOL  
CONSTRUCTION BOARD  
121 McLean Avenue  
Yonkers, NY 10705



KG+D . ARCHITECTS PC  
285 MAIN STREET MOUNT KISCO, NEW YORK, 10549  
P.914.666.5900 KGDARCHITECTS.COM

NY SED PROJECT CONTROL NO.  
66-23-00-01-0-346-001

## CONSTRUCTION DOCUMENTS



NOTE: ALL IDEAS, DESIGNS, ARRANGEMENTS AND PLANS INDICATED OR  
REPRESENTED BY THIS DRAWING ARE OWNED BY AND ARE THE PROPERTY OF  
KATYER GARRETT & ASSOCIATES ARCHITECTS, P.C. (KGA) AND WERE CREATED  
FOR USE ON THE PROJECT. NONE OF SUCH IDEAS, DESIGNS, ARRANGEMENTS  
OR PLANS SHALL BE USED BY OR DISCLOSED TO ANY PURPOSE WHATSOEVER  
WITHOUT THE WRITTEN PERMISSION OF (KGA).

WRITTEN DIMENSIONS ON THIS DRAWING SHALL HAVE PRECEDENCE OVER  
SCALED DIMENSIONS. CONTRACTOR SHALL VERIFY ALL ACTUAL DIMENSIONS  
AND CONDITIONS ON THE JOB AND THE ARCHITECT MUST BE NOTIFIED OF ANY  
VARIATIONS FROM DIMENSIONS AND CONDITIONS SHOWN. SHOP DETAILS MUST  
BE SUBMITTED TO THIS OFFICE FOR APPROVAL BEFORE PROCEEDING WITH  
FABRICATION.

ALTERATIONS BY ANY PERSON IN ANY WAY OF ANY ITEM CONTAINED ON THIS  
DOCUMENT, UNLESS ACTING UNDER THE DIRECTION OF THE LICENSED  
ARCHITECT, ENGINEER, PROFESSIONAL SEAL, IS A VIOLATION OF THE  
COPRIGHT ACTS, GARRETT & ASSOCIATES ARCHITECTS & ENGINEERS, P.C.  
ALL RIGHTS RESERVED.

Professional Seal

|   |            |                         |
|---|------------|-------------------------|
| 4 | 11/01/2021 | ISSUED TO BID           |
| 3 | 07/14/2021 | CONSTRUCTION DOCS-NYSED |
| 2 | 12/15/2020 | DESIGN DEVELOPMENT      |
| 1 | 08/31/2020 | SCHEMATIC DESIGN        |

No. Date Issue

Sheet Title

2nd Floor Plan

Job No. 2019-1026 Date 11/17/20

Scale AS NOTED Drawn / Checked BGA /BGA

Sheet Number

SP202



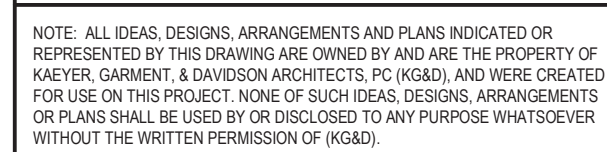
YONKERS JOINT SCHOOL  
CONSTRUCTION BOARD  
121 McLean Avenue  
Yonkers, NY 10705

**KG+D . ARCHITECTS P**  
285 MAIN STREET MOUNT KISCO . NEW YORK . 10959  
P:914.666.5900 KGDARCHITECTS.C

66-23-00-01-0-346-001

**loga**

**CONSULTING ENGINEERS**  
39 MARBLE AVE. PLEASANTVILLE, NY 10570  
914.328.6060 GENERAL@BGA-ENG.com www.BGA-ENG.com



WRITTEN DIMENSIONS ON THIS DRAWING SHALL HAVE PRECEDENCE OVER SCALED DIMENSIONS. CONTRACTOR SHALL VERIFY ALL ACTUAL DIMENSIONS AND CONDITIONS ON THE JOB AND THE ARCHITECT MUST BE NOTIFIED OF ANY VARIATIONS FROM DIMENSIONS AND CONDITIONS SHOWN. SHOP DETAILS MUST BE SUBMITTED TO THIS OFFICE FOR APPROVAL. BEFORE PROCEEDING WITH

ALTERATIONS BY ANY PERSON, IN ANY WAY, OF ANY ITEM CONTAINED ON THIS DOCUMENT, UNLESS ACTING UNDER THE DIRECTION OF THE LICENCED ARCHITECT WHOSE PROFESSIONAL SEAL IS AFFIXED HERETO, IS A VIOLATION OF TITLE VII, SECT. 89.5 (b) OF NEW YORK STATE LAW.  
COPYRIGHT KAEYER, GARMENT + DAVIDSON ARCHITECTS & ENGINEERS, PC  
ALL RIGHTS RESERVED.

Professional Seal

|    |            |                         |
|----|------------|-------------------------|
| 4  | 11/01/2021 | ISSUED TO BID           |
| 3  | 07/14/2021 | CONSTRUCTION DOCS-NYSED |
| 2  | 12/15/2020 | DESIGN DEVELOPMENT      |
| 1  | 08/31/2020 | SCHEMATIC DESIGN        |
| No | Date       | Issue                   |

|             |    |
|-------------|----|
| No.         | Da |
| Sheet Title |    |

### 3rd Floor Plan

|           |          |
|-----------|----------|
| Job No.   | Date     |
| 2019-1026 | 11/17/20 |

|                   |                              |
|-------------------|------------------------------|
| Scale<br>AS NOTED | Drawn / Checked<br>BGA / BGA |
|-------------------|------------------------------|

Sheet Number

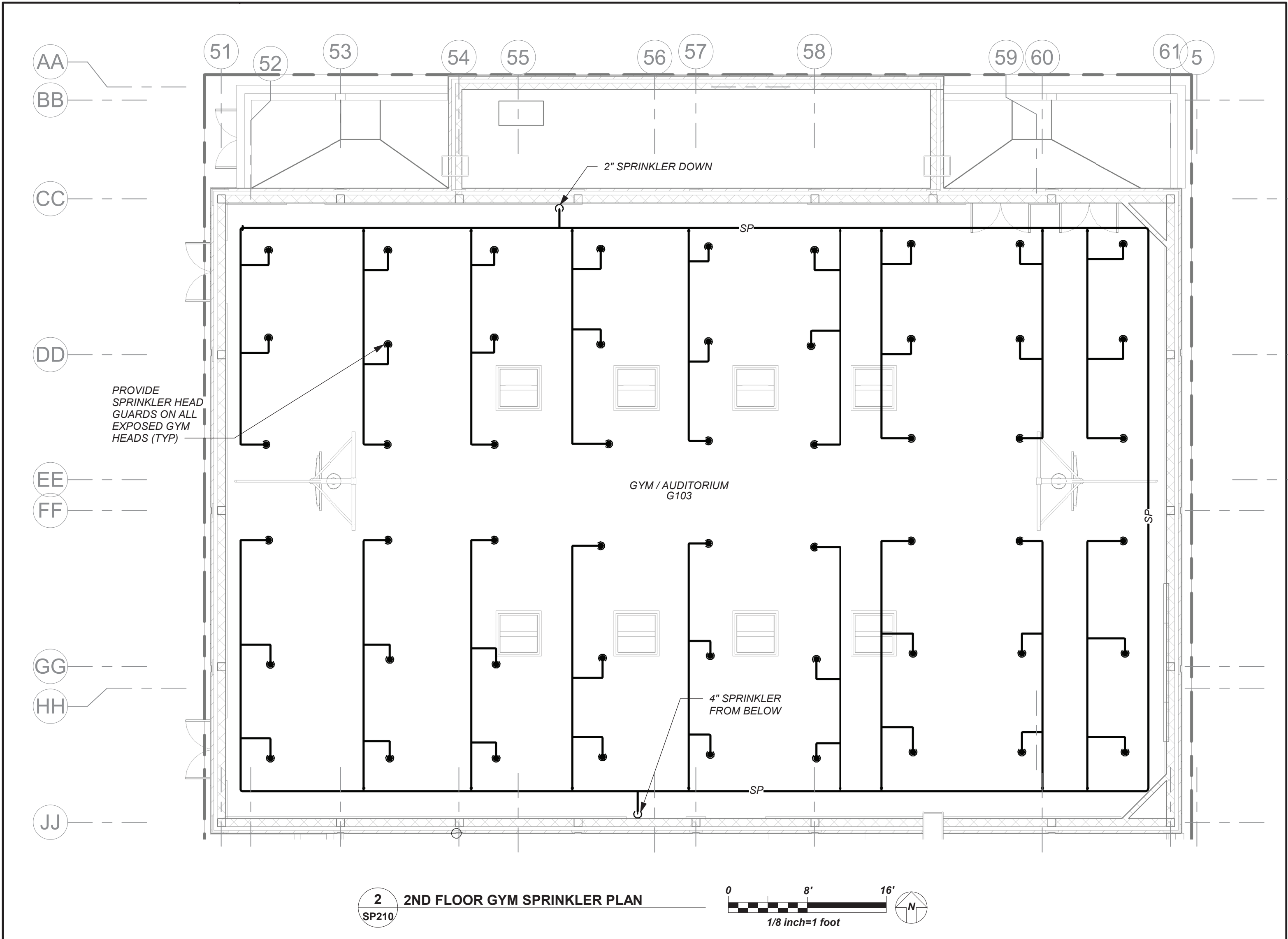
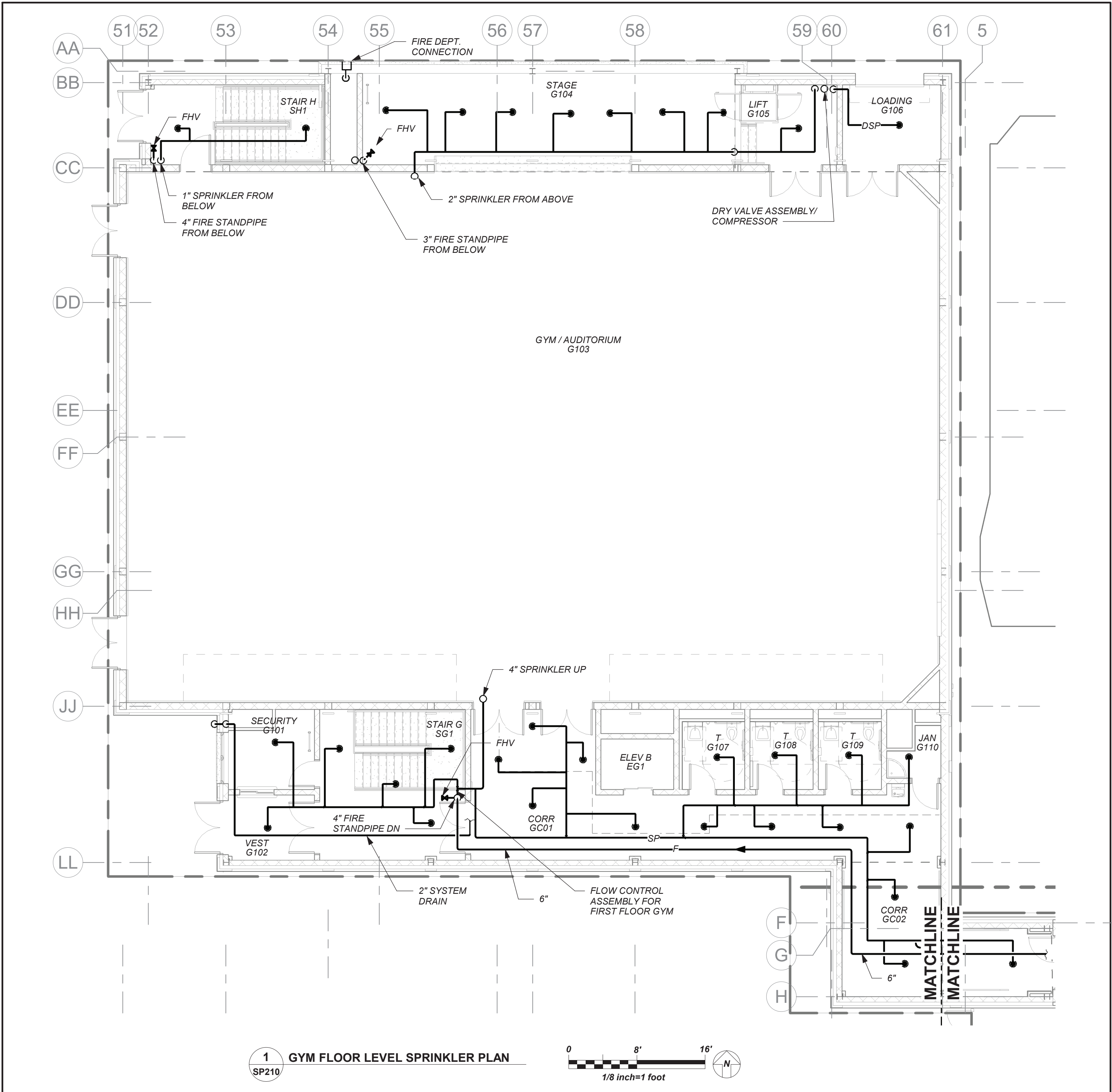
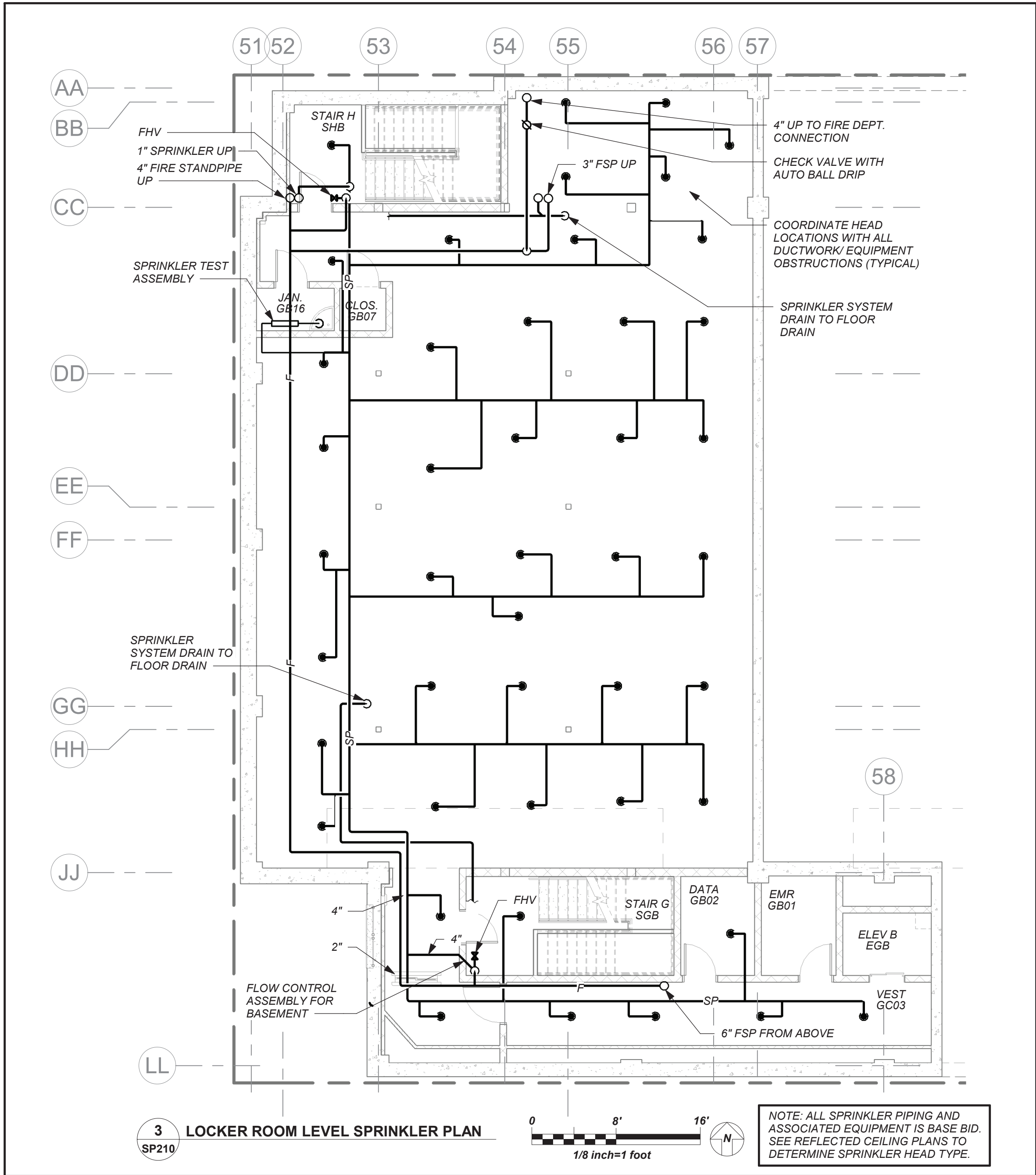
SP203

BEFORE FABRICATION THIS CONTRACTOR SHALL  
VERIFY ALL MEASUREMENTS AND CONDITIONS ON  
JOB AND COORDINATE HIS WORK WITH THE WORK  
OF ALL OTHER CONTRACTORS









BEFORE FABRICATION THIS CONTRACTOR SHALL VERIFY ALL MEASUREMENTS AND CONDITIONS ON JOB AND COORDINATE HIS WORK WITH THE WORK OF ALL OTHER CONTRACTORS

# NEW COMMUNITY SCHOOL AT THE ST DENIS SITE

YONKERS JOINT SCHOOL CONSTRUCTION BOARD  
121 McLean Avenue  
Yonkers, NY 10705

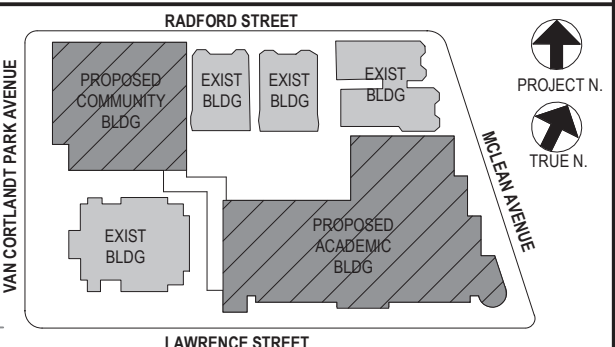
**KG+D** listen imagine build

**KG+D . ARCHITECTS PC**  
285 MAIN STREET MOUNT KISCO, NEW YORK, 10549  
P.914.666.5900 KGDARCHITECTS.COM

NY SED PROJECT CONTROL NO.  
66-23-00-01-0-346-001

CONSTRUCTION DOCUMENTS

**bga**  
BARILE GALLAGHER & ASSOCIATES  
CONSULTING ENGINEERS  
99 MARBLE AVE. PLEASANTVILLE, NY 10570  
914.326.0099 GENERAL@BGA-ENG.com www.BGA-ENG.com



NOTE: ALL IDEAS, DESIGN ARRANGEMENTS AND PLANS INDICATED OR REPRESENTED BY THIS DRAWING ARE OWNED BY AND ARE THE PROPERTY OF KATYER GARBENT & ASSOCIATES ARCHITECTS, PC (KGA) AND WERE CREATED FOR USE ON THE PROJECT. NONE OF SUCH IDEAS, DESIGN ARRANGEMENTS OR PLANS SHALL BE USED BY OR DISCLOSED TO ANY PURPOSE WHATSOEVER WITHOUT THE WRITTEN PERMISSION OF (KGA).

WRITTEN DIMENSIONS ON THIS DRAWING SHALL HAVE PRECEDENCE OVER SCALED DIMENSIONS. CONTRACTOR SHALL VERIFY ALL ACTUAL DIMENSIONS AND CONDITIONS ON THE JOB AND THE ARCHITECT MUST BE NOTIFIED OF ANY VARIATIONS FROM DIMENSIONS AND CONDITIONS SHOWN. SHOP DETAILS MUST BE SUBMITTED TO THIS OFFICE FOR APPROVAL BEFORE PROCEEDING WITH FABRICATION.

ALTERATIONS BY ANY PERSON IN ANY WAY OF ANY ITEM CONTAINED ON THIS DOCUMENT, UNLESS ACTING UNDER THE DIRECTION OF THE LICENSED ARCHITECT, WHOSE PROFESSIONAL SEAL IS AFFIXED HEREIN, IS A VIOLATION OF TITLE 16, SECTION 16-1.5 OF NEW YORK STATE LAW.

COPYRIGHT KATYER GARBENT & ASSOCIATES ARCHITECTS & ENGINEERS, PC. ALL RIGHTS RESERVED.

Professional Seal

|     |            |                         |
|-----|------------|-------------------------|
| 4   | 11/01/2021 | ISSUED TO BID           |
| 3   | 07/14/2021 | CONSTRUCTION DOCS-NYSED |
| 2   | 12/15/2020 | DESIGN DEVELOPMENT      |
| 1   | 08/31/2020 | SCHEMATIC DESIGN        |
| No. | Date       | Issue                   |

Sheet Title

Community Wing Sprinkler Plan

Job No. 2019-1026 Date 11/16/20

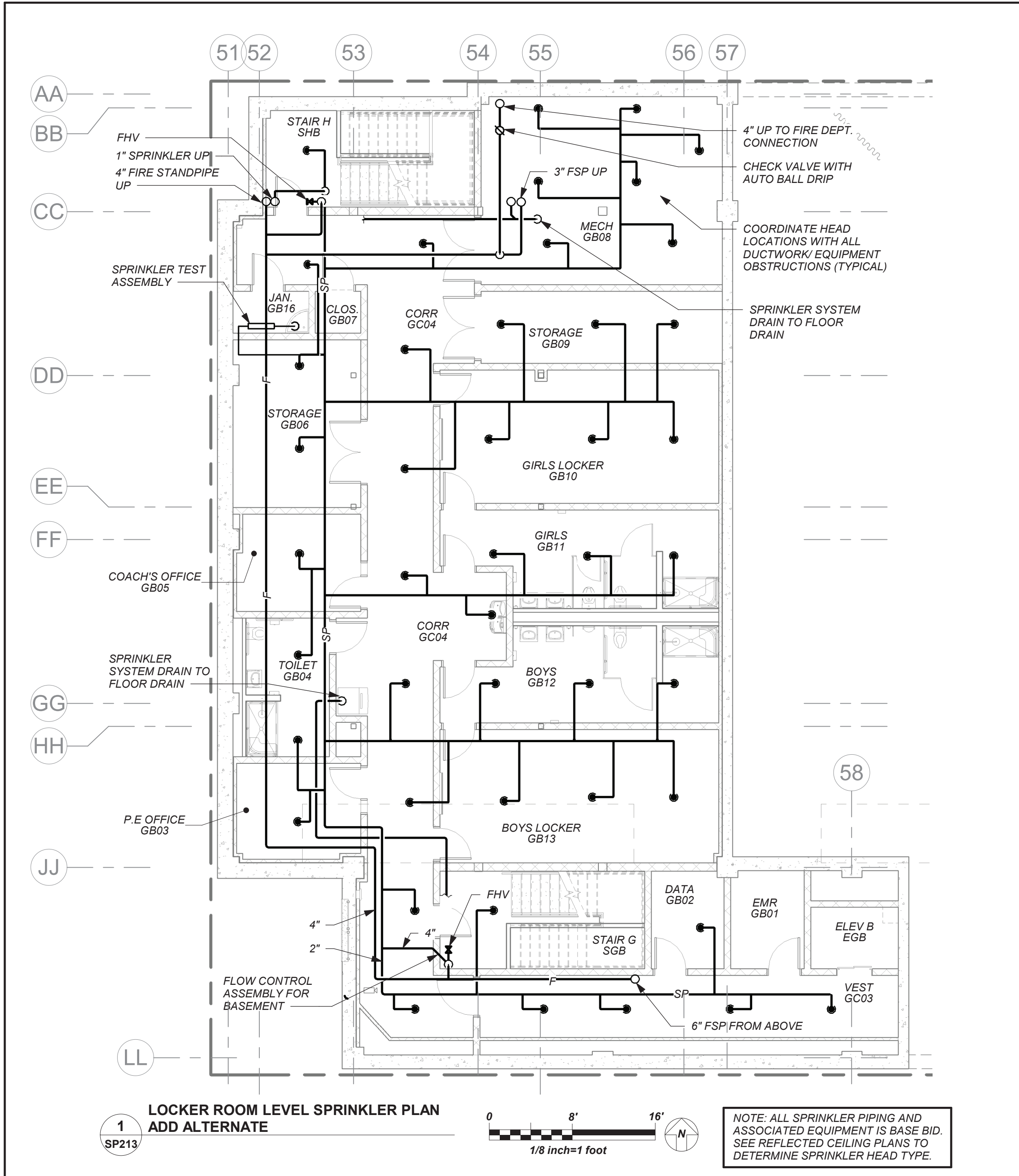
Scale AS NOTED Drawn / Checked BGA /BGA

Sheet Number

**SP210**



BEFORE FABRICATION THIS CONTRACTOR SHALL  
VERIFY ALL MEASUREMENTS AND CONDITIONS ON  
JOB AND COORDINATE HIS WORK WITH THE WORK  
OF ALL OTHER CONTRACTORS



# NEW COMMUNITY SCHOOL AT THE ST DENIS SITE

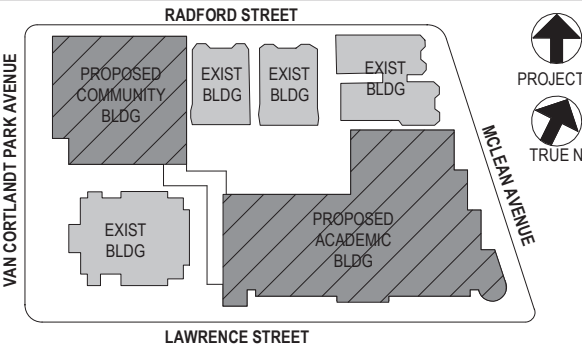
YONKERS JOINT SCHOOL CONSTRUCTION BOARD  
121 McLean Avenue  
Yonkers, NY 10705



KG+D . ARCHITECTS PC  
285 MAIN STREET MOUNT KISCO, NEW YORK, 10549  
P 914.666.5900 KGDARCHITECTS.COM

NY SED PROJECT CONTROL NO.  
66-23-00-01-0-346-001

CONSTRUCTION DOCUMENTS



NOTE: ALL IDEAS, DESIGN, ARRANGEMENTS AND PLANS INDICATED OR REPRESENTED BY THIS DRAWING ARE OWNED BY AND ARE THE PROPERTY OF KATYER GARRETT & ASSOCIATES ARCHITECTS, P.C. (KGA) AND WERE CREATED FOR USE ON THE PROJECT. NONE OF SUCH IDEAS, DESIGN, ARRANGEMENTS OR PLANS SHALL BE USED BY OR DISCLOSED TO ANY PURPOSE WHATSOEVER WITHOUT THE WRITTEN PERMISSION OF KGA.

WRITTEN DIMENSIONS ON THIS DRAWING SHALL HAVE PRECEDENCE OVER SCALED DIMENSIONS. CONTRACTOR SHALL VERIFY ALL ACTUAL DIMENSIONS AND CONDITIONS ON THE JOB AND THE ARCHITECT MUST BE NOTIFIED OF ANY VARIATIONS FROM DIMENSIONS AND CONDITIONS SHOWN. SHOP DETAILS MUST BE SUBMITTED TO THIS OFFICE FOR APPROVAL BEFORE PROCEEDING WITH FABRICATION.

ALTERATIONS BY ANY PERSON, IN ANY WAY, OF ANY ITEM CONTAINED ON THIS DOCUMENT, UNLESS ACTING UNDER THE DIRECTION OF THE LICENSED ARCHITECT, WHOSE PROFESSIONAL SEAL IS AFFIXED HERETO, IS A VIOLATION OF TITLE 24, SECTION 24-1.6 OF NEW YORK STATE LAW.  
COPYRIGHT KATYER GARRETT & ASSOCIATES ARCHITECTS & ENGINEERS, P.C. ALL RIGHTS RESERVED.

Professional Seal

|    |            |                         |
|----|------------|-------------------------|
| 4  | 11/01/2021 | ISSUED TO BID           |
| 3  | 07/14/2021 | CONSTRUCTION DOCS-NYSED |
| 2  | 12/15/2020 | DESIGN DEVELOPMENT      |
| 1  | 08/31/2020 | SCHEMATIC DESIGN        |
| No | Date       | Issue                   |

Sheet Title

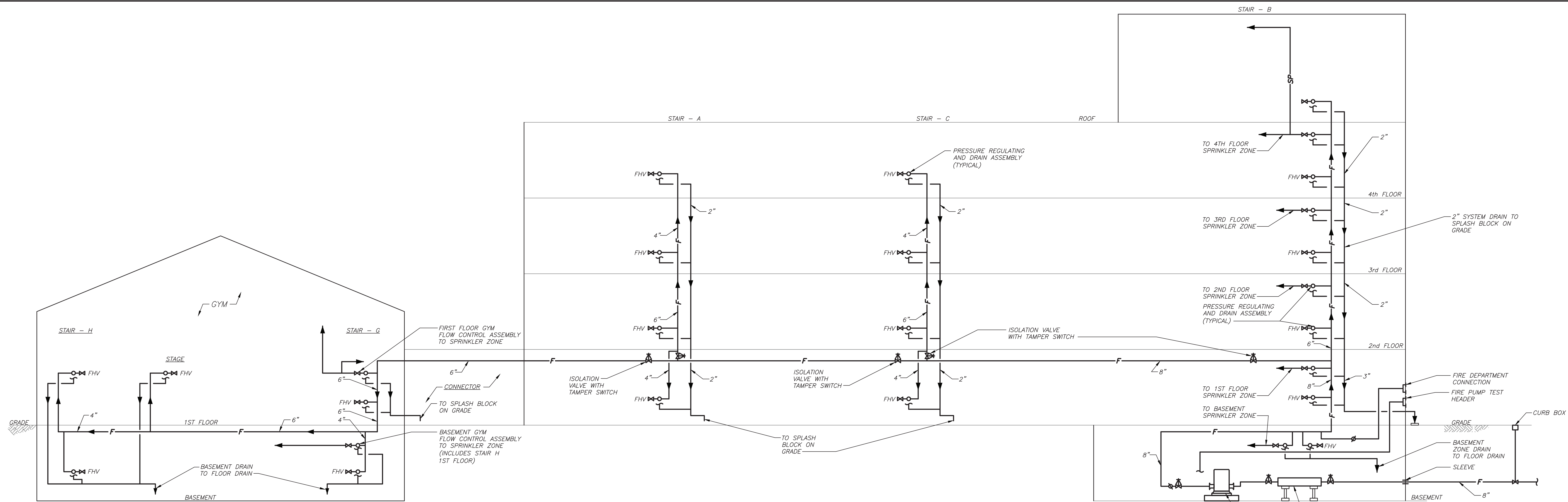
Community Wing Basement - Add Alt -  
Gym Basement Fit-Out Plan

|         |           |                 |          |
|---------|-----------|-----------------|----------|
| Job No. | 2019-1026 | Date            | 11/03/21 |
| Scale   | AS NOTED  | Drawn / Checked | BGA /BGA |

Sheet Number

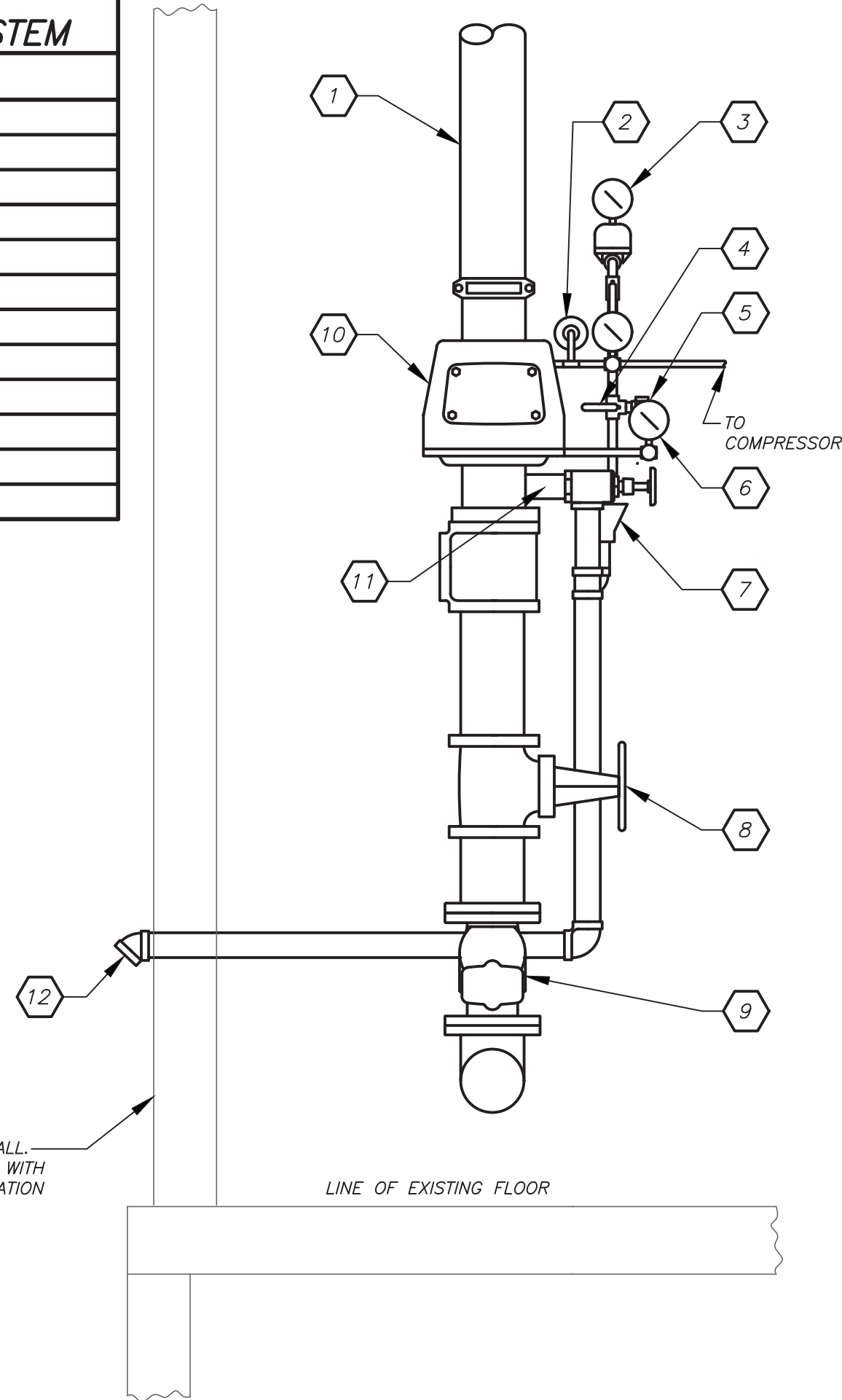
SP213



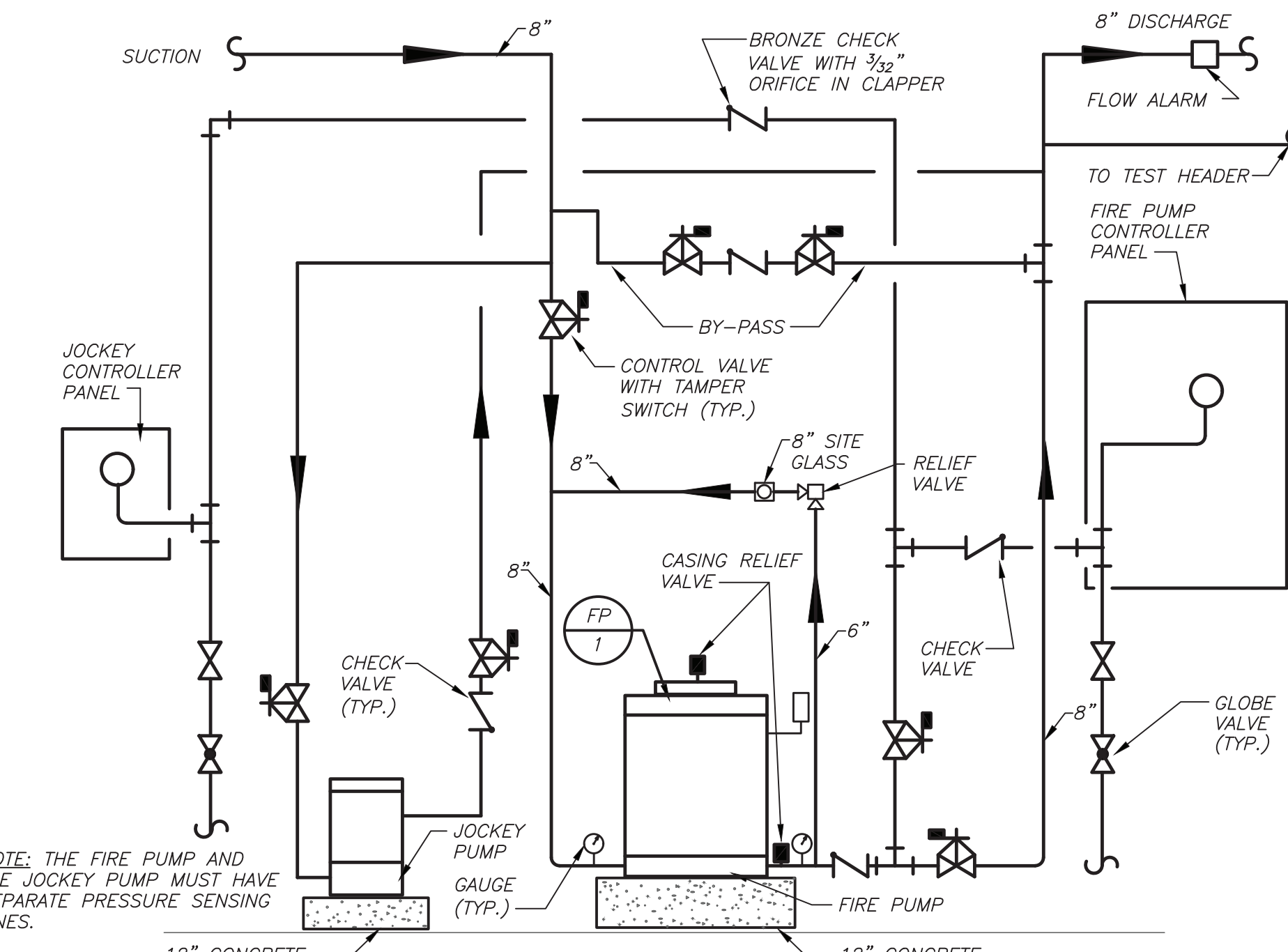


SPRINKLER/FIRE STAND PIPE SCHEMATIC RISER DIAGRAM **1** NO. SCALE  
SP-300

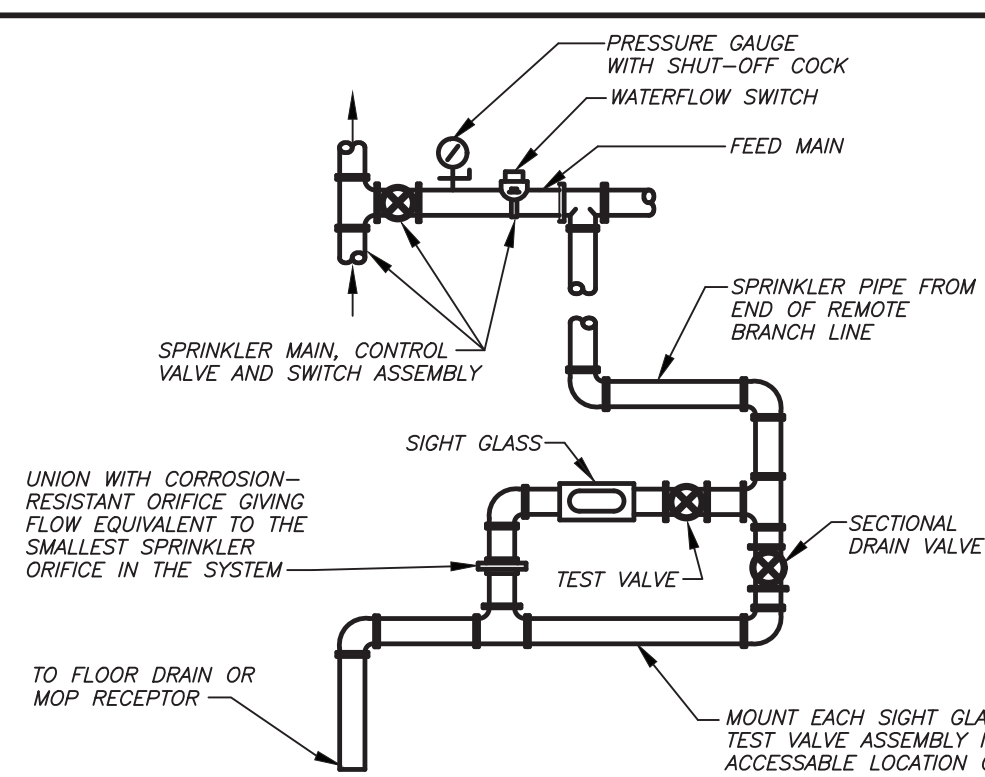
| LIST OF SPRINKLER<br>RISER APPURTENANCES-DRY SYSTEM |                                  |
|-----------------------------------------------------|----------------------------------|
| MARK                                                | DESCRIPTION                      |
| (1)                                                 | TO SPRINKLER DISTRIBUTION SYSTEM |
| (2)                                                 | AIR PRESSURE MAINTENANCE DEVICE  |
| (3)                                                 | ACCELERATOR                      |
| (4)                                                 | ALARM TEST VALVE                 |
| (5)                                                 | PRESSURE SWITCH (HIDDEN)         |
| (6)                                                 | ALARM LINE STRAINER (HIDDEN)     |
| (7)                                                 | DRAIN CAP/FUNNEL                 |
| (8)                                                 | O.S. & Y. VALVE W/T'S            |
| (9)                                                 | CHECK VALVE                      |
| (10)                                                | DRY VALVE                        |
| (11)                                                | TEST DRAIN VALVE                 |
| (12)                                                | TEST DRAIN                       |



DRY SPRINKLER RISER DETAIL **5** NOT TO SCALE  
SP-300

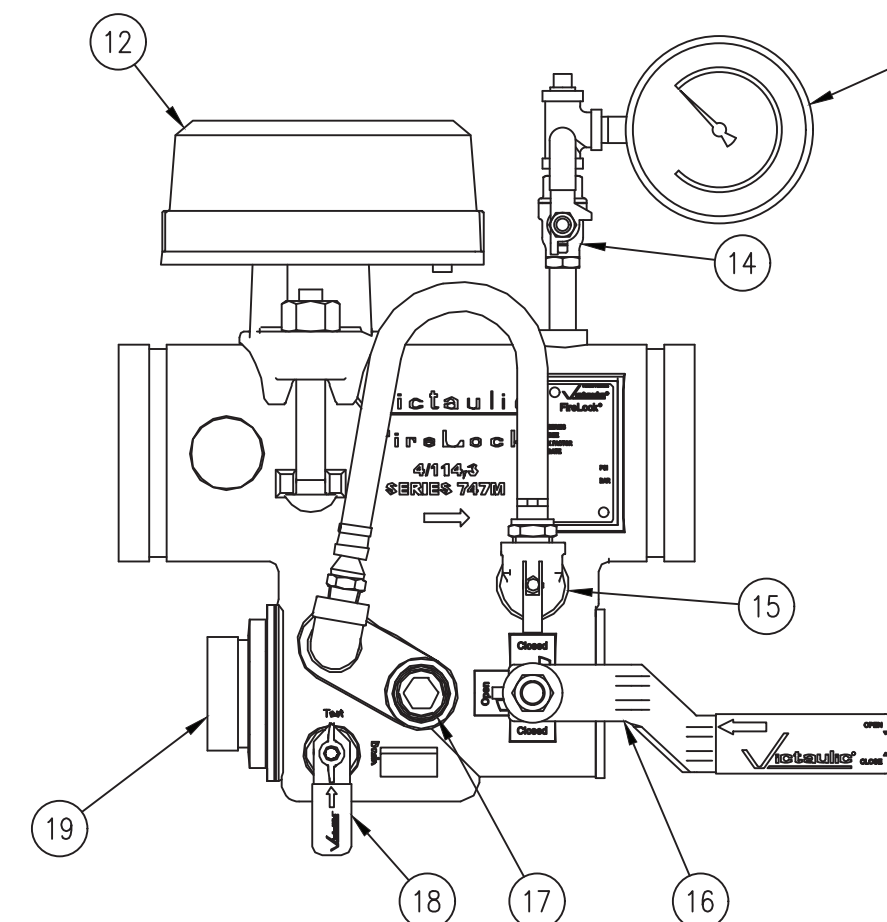


FIRE PROTECTION BOOSTER PUMP **3** NO. SCALE  
SP-300

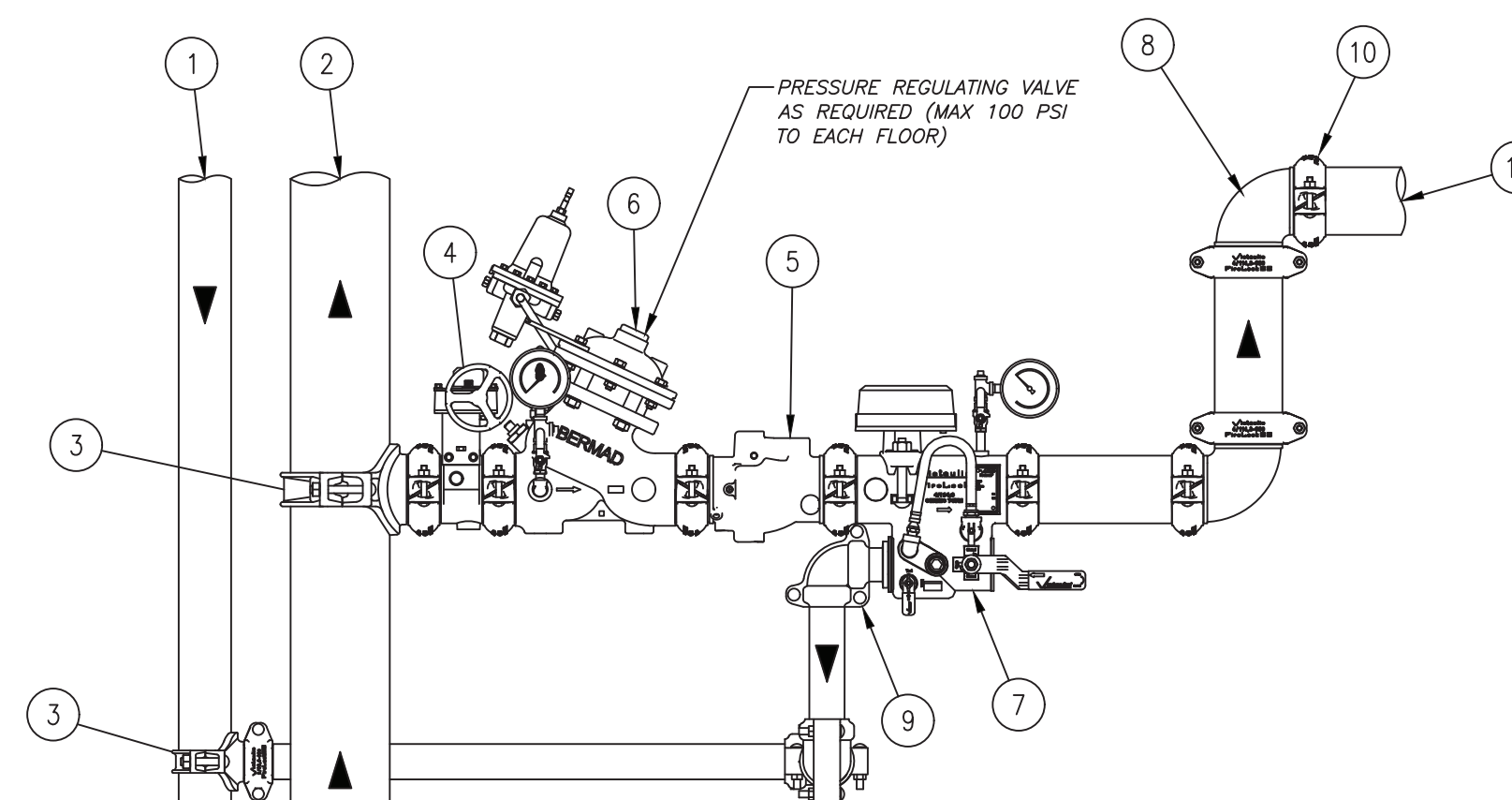


SYSTEM TEST ASSEMBLY **4** NO. SCALE  
SP-300

| PRODUCT LEGEND                       |                                                                         |
|--------------------------------------|-------------------------------------------------------------------------|
| 1                                    | DRAIN RISER                                                             |
| 2                                    | RISER                                                                   |
| 3                                    | MECHANICAL TEE STYLE 920N                                               |
| 4                                    | VIC FIRELOCK BUTTERFLY VALVE SERIES 705                                 |
| 5                                    | VIC FIRELOCK CHECK VALVE SERIES 717                                     |
| 6                                    | VICTAULIC SERIES 887 PRESSURE REDUCING VALVE (Bartm 720 UL/4\"/>        |
| 7                                    | VIC FIRELOCK ZONE CONTROL RISER MODULE SERIES 747MP W/PSI RELIEF VALVE  |
| 8                                    | VIC FIRELOCK 90 DEG ELBOW No. 001                                       |
| 9                                    | VIC R FIRELOCK 90 DEG ELBOW No. 101                                     |
| 10                                   | VIC FIRELOCK EZ RIGID COUPLING STYLE 009N (OR) RIGID COUPLING STYLE 005 |
| 11                                   | TO SPRINKLER SYSTEM                                                     |
| 12                                   | UL LISTED FM APPROVED FLOW SWITCH (SYSTEM SENSOR MODEL WFD)             |
| 13                                   | PRESSURE GAUGE                                                          |
| 14                                   | ISOLATION VALVE FOR GAUGE                                               |
| 15                                   | PRESSURE RELIEF VALVE                                                   |
| 16                                   | SHUT OFF VALVE (OFFSET HANDLE FOR ACCESS ON BOTH SIDES)                 |
| 17                                   | SITE GLASS (VISIBLE FROM BOTH SIDES)                                    |
| 18                                   | TEST AND DRAIN VALVE (HANDLE ON BOTH SIDES)                             |
| 19                                   | GROOVED DRAIN CONNECTION                                                |
| SEE VICTAULIC SUBMITTAL NUMBER 10.96 |                                                                         |



FIRELOCK ZONE CONTROL RISER MODULE W/ PSI RELIEF  
CAN BE MOUNTED IN THE HORIZONTAL OR VERTICAL UPFLOW POSITION



ZONE CONTROL RISER VALVE ASSEMBLY  
WITH ISOLATION VALVE, CHECK VALVE, AND PSI RELIEF **2** NO. SCALE  
SP-300