





	15	14	13	12	11	10	9	8	7	6	5	4	3	2	1	
L																
K																
J																
H																
G																
F																
E																
D																
C																
B																
A																
	15	14	13	12	11	10	9	8	7	6	5	4	3	2	1	

REMOVALS


 JUNCTION BOX


 HVAC STARTER/MOTOR CONTROLLER


 DISCONNECT ELECTRIC TO MOTOR AND REMOVE IN ITS ENTIRETY BACK TO SOURCE


 EXISTING LIGHT FIXTURE


POWER & SYSTEMS


 DISCONNECT SWITCH, RATINGS AS INDICATED ON FLOOR PLANS


 FEEDER CONDUIT WITH CONDUCTORS

 BRANCH CIRCUIT HOMERUN TO PANELBOARD. NUMBER OF ARROWS INDICATES NUMBER OF CIRCUITS. CAPITAL LETTER WITH NUMERALS INDICATE PANEL DESIGNATION AND NUMERAL INDICATES PANEL CIRCUIT BREAKER NUMBER.

 CONDENSING UNIT (OUTDOOR), (PROVIDED UNDER MC CONTRACT, LINE VOLTAGE WIRING BY EC)

 GROUND FAULT CIRCUIT INTERRUPTING RECEPTACLE (GFCI) WITH UL LISTED WEATHERPROOF WHILE IN USE COVER.

 EXISTING SURFACE MOUNTED PANELBOARD

 EXISTING RECESS MOUNTED PANELBOARD

ABBREVIATIONS

ABBREVIATION	DESCRIPTION
AFF	ABOVE FINISHED FLOOR
AFG	ABOVE FINISHED GRADE
AFR	ABOVE FINISHED ROOF
AWG	AMERICAN WIRE GAUGE
BFG	BELOW FINISHED GRADE
C	CONDUIT
CB	CIRCUIT BREAKER
EAHU	EXISTING AIR HANDLING UNIT
EC	ELECTRICAL CONTRACTOR
EGC	EQUIPMENT GROUNDING CONDUCTOR
EXR	EXISTING TO REMAIN
FBO	FURNISHED BY OWNER
FIBO	FURNISHED AND INSTALLED BY OWNER
G	VANDAL GUARD
GC	GENERAL CONTRACTOR
GFI	GROUND FAULT INTERRUPTER
HID	HIGH INTENSITY DISCHARGE (METAL HALIDE)
MC	MECHANICAL CONTRACTOR
NIC	NOT IN CONTRACT
NTS	NOT TO SCALE
RGS	RIGID GALVANIZED STEEL
TYP	TYPICAL
UON	UNLESS OTHERWISE NOTED
WP	WEATHER PROOF WHILE IN USE COVER

MOUNTING HEIGHTS

UNLESS OTHERWISE NOTED, MOUNT DEVICES AND EQUIPMENT AT HEIGHTS MEASURED FROM FINISHED FLOOR TO DEVICE/ EQUIPMENT CENTERLINE AS LISTED BELOW.

COORDINATE DEVICE LOCATIONS WITH ARCHITECTURAL ELEVATIONS PRIOR TO ROUGH-IN.

WHERE STRUCTURAL OR OTHER INTERFERENCE'S PREVENT COMPLIANCE WITH MOUNTING HEIGHTS LISTED BELOW, CONSULT OWNER'S REPRESENTATIVE FOR APPROVAL TO CHANGE LOCATION BEFORE INSTALLATION.

DISCONNECT SWITCH HANDLE, UON 48"

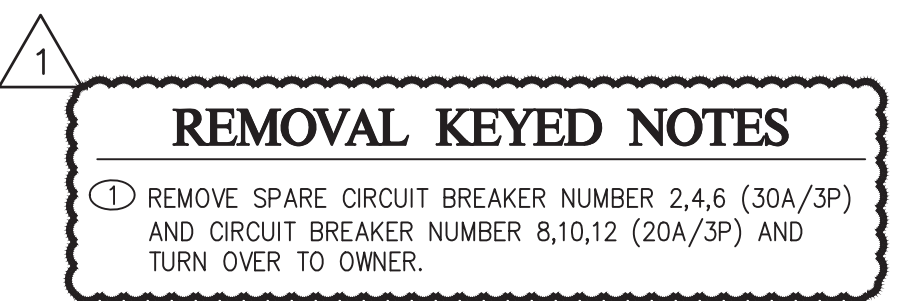
GENERAL NOTES - INSTALLATION

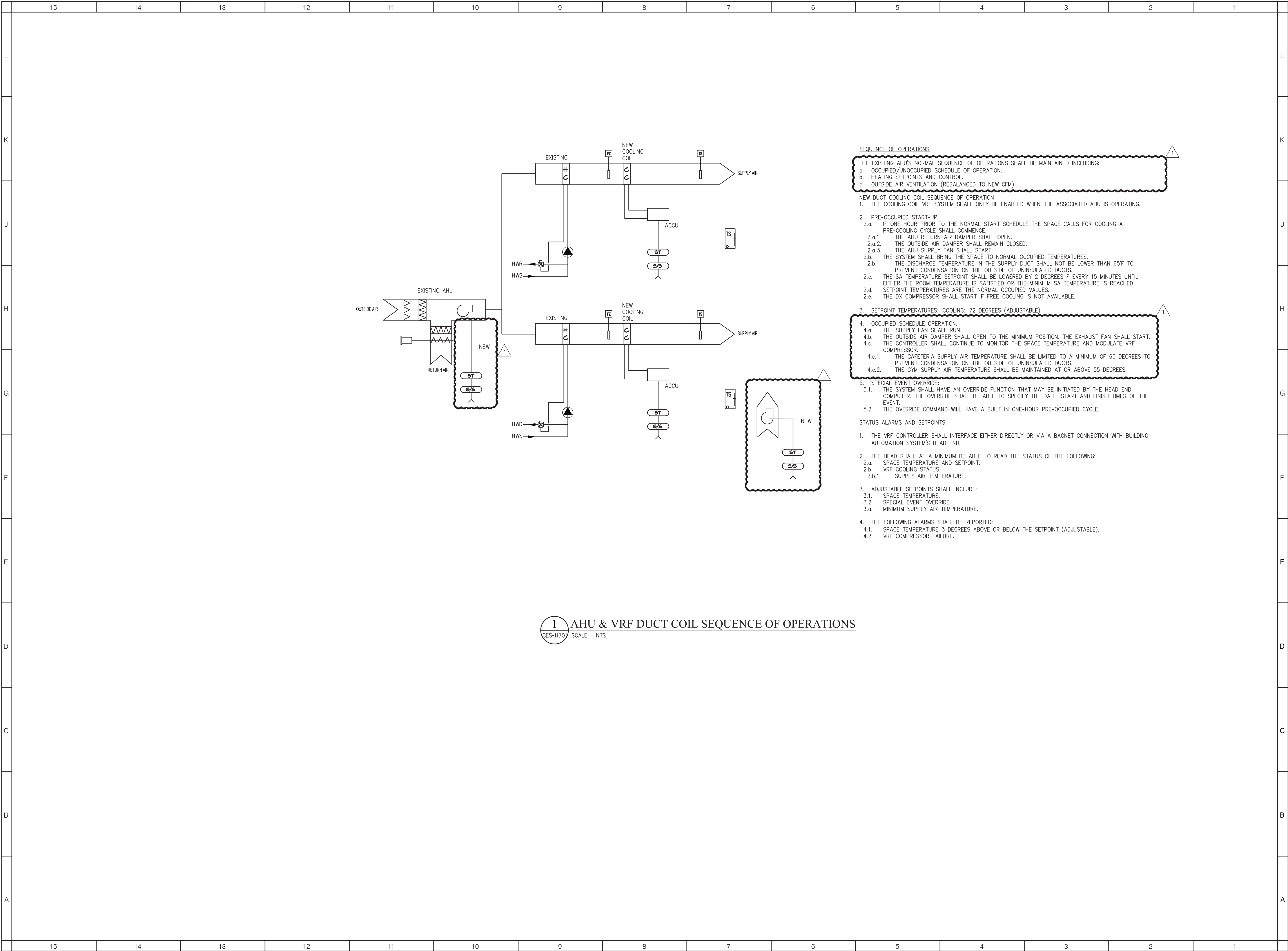
- NEW BRANCH CIRCUITRY SHALL BE INSTALLED ABOVE CEILING WHERE POSSIBLE, AS HIGH AS POSSIBLE.
- ALL EQUIPMENT SHOWN ON REMOVALS PLANS SHALL BE REMOVED, UNLESS OTHERWISE NOTED. REMOVE ONLY ASSOCIATED WIRING WITHIN ROOM. ASSOCIATED EXISTING BRANCH CIRCUIT WIRING HOMERUN BACK TO PANEL IN EACH ROOM SHALL REMAIN FOR CONNECTION TO NEW LIGHTING BRANCH CIRCUIT WIRING SHOWN, UNLESS OTHERWISE NOTED.
- COORDINATE ALL CONDUIT RUNS WITH OTHER TRADES PRIOR TO ROUGH-IN. RELOCATE ANY CONDUITS AS NECESSARY TO PERMIT INSTALLATION OF DUCTWORK OR PIPING.
- INSTALL ALL CIRCUITING CONCEALED INSIDE WALL CAVITY WHERE EVER POSSIBLE. PROVIDE SURFACE MOUNTED BACKBOXES AND RACEWAY FOR WIRING DEVICES LOCATED ON EXISTING SOLID WALL CONSTRUCTION. PROVIDE SHALLOW TYPE BACKBOXES FOR SURFACE MOUNTED POWER AND SWITCHING APPLICATIONS. REFER TO ARCHITECTURAL PLANS FOR WALL TYPES.
- FIRESTOP ALL LOW VOLTAGE SLEEVES AND PENETRATIONS AFTER INSTALLATION OF CABLE.
- PROVIDE OPEN TOP CABLE HANGERS 4' ON CENTER SUPPORTED TO SUPPORT ALL LOW VOLTAGE CABLING ABOVE ACCESSIBLE CEILINGS. PROVIDE SEPARATE CABLE HANGERS FOR FIRE ALARM CABLING. INSTALL ALL EXPOSED CABLES IN EMT CONDUIT OR SURFACE RACEWAY IN FINISHED AREAS.
- ALL LOW VOLTAGE CABLING SHALL BE PLENUM RATED.
- OBTAIN WIRING AND INSTALLATION DIAGRAMS FOR ALL ELECTRICAL CONNECTIONS TO EQUIPMENT PROVIDED BY MECHANICAL CONTRACTOR PRIOR TO ROUGHING. WORK THAT IS NOT PROPERLY COORDINATED WILL BE RELOCATED AT NO COST TO THE OWNER.

GENERAL NOTES

- PROVIDE 50 ACT CEILING TILES OF EACH SIZE: 2'X2' AND 2'X4' TILES TO MATCH EXISTING WITHIN THE BUILDING. COORDINATE WITH OWNER FOR EXACT TYPE. REUSE AND RELOCATE EXISTING GOOD TILES PREVIOUSLY HOUSING FIRE ALARM CEILING DEVICES TO INSTALL REPLACEMENT DEVICES INTO. IF TILE IS NOT ACCEPTABLE FOR MOUNTING, PROVIDE REPLACEMENT FROM QUANTITY ABOVE.
- ALL DEVICES AND EQUIPMENT SHOWN ON DEMOLITION PLANS SHALL BE REMOVED, INCLUDING WIRING AND CONDUIT BACK TO SOURCE, UNLESS OTHERWISE NOTED.
- EC IS RESPONSIBLE TO PATCH AND PAINT AS NECESSARY TO MATCH FINISHED SPACE MATERIALS AND PAINT AROUND ALL FIRE ALARM WALL MOUNTED DEVICE BOXES WHEN INSTALLED WHERE EXISTING WALL DEVICE WAS LOCATED. COORDINATE WITH OWNER FOR PAINT TYPES.
- PATCH AND PAINT ANY REMOVED WALL MOUNTED DEVICES AND CONDUIT LOCATIONS TO MATCH FINISHED SPACE MATERIALS AND PAINT. PROVIDE BLANK COVERPLATES AND PAINT TO MATCH FINISHED SPACE WHERE DEVICES WERE INSTALLED IN CMU BLOCK WALLS. COORDINATE WITH OWNER FOR PAINT TYPES.
- REMOVE AND REINSTALL EXISTING ACOUSTICAL CEILING SYSTEM TILES AS REQUIRED TO INSTALL ELECTRICAL WORK. REPLACE ANY DAMAGED TILES AS A RESULT OF WORK. ALL CONTRACTORS SHALL PROTECT EXISTING SURFACES AND EQUIPMENT.

GYM LIGHTING HIGH BAY INSTALLATION DETAIL





1 AHU & VRF DUCT COIL SEQUENCE OF OPERATIONS
CES-H701 SCALE: NTS

ARCHITECT



NEW YORK OKLAHOMA NORTH CAROLINA
TEXAS COLORADO

KSQ Design
215 West 40th Street | 15th Floor
New York, NY 10018
914.682.3700 office
www.ksq.design

Owner
Yorktown Central School District
2725 Crompond Road
Yorktown Heights, NY 10598
914 243 8000 office

Construction Manager
Arris Contracting Co.
189 Smith Street
Poughkeepsie, NY 12601
845 473 6300 office
845 473 1453 fax

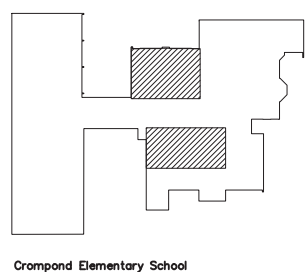
MEP Engineer
DELTA Engineers, Architects, & Land
Surveyors, DPC
220 Hartonside Dr, Suite #202
Schenectady, NY 12305
518.690.0046 office

Structural Engineer
Clapper Structural Engineering, PLLC
160 Partition Street
Saugerties, New York 12477
845.943.9601 office
www.clapperstructural.com

Civil Engineer
The Chazen Companies
547 River Street
Troy, New York 12180
518.266.7323 office
www.chazencompanies.com

SED CONTROL NUMBERS

YHS -	#66-24-02-06-0-005-028
MS -	#66-24-02-06-0-007-027
CES -	#66-24-02-06-0-003-022
MES -	#66-24-02-06-0-004-025
BES -	#66-24-02-06-0-002-020



DISTRICT WIDE
IMPROVEMENTS 2020
PHASE II

CROMPOND SCHOOL
2901 MANOR STREET.
YORKTOWN HEIGHTS, NY
10598

REVISIONS		
No.	Description	Date
1	ADDENDUM #2	2021.11.17

ISSUED: BID ISSUE

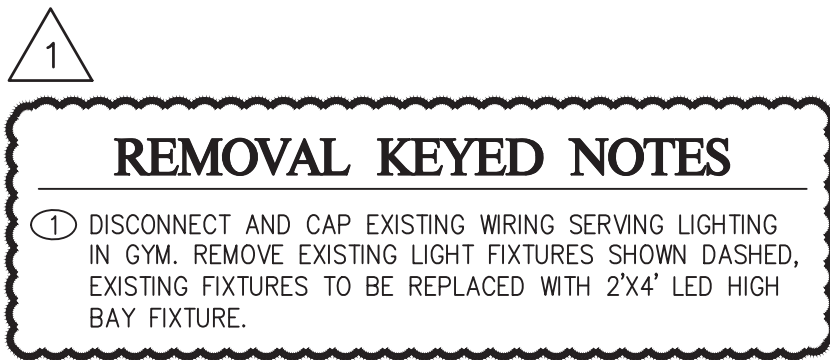
DATE: 10/25/2021

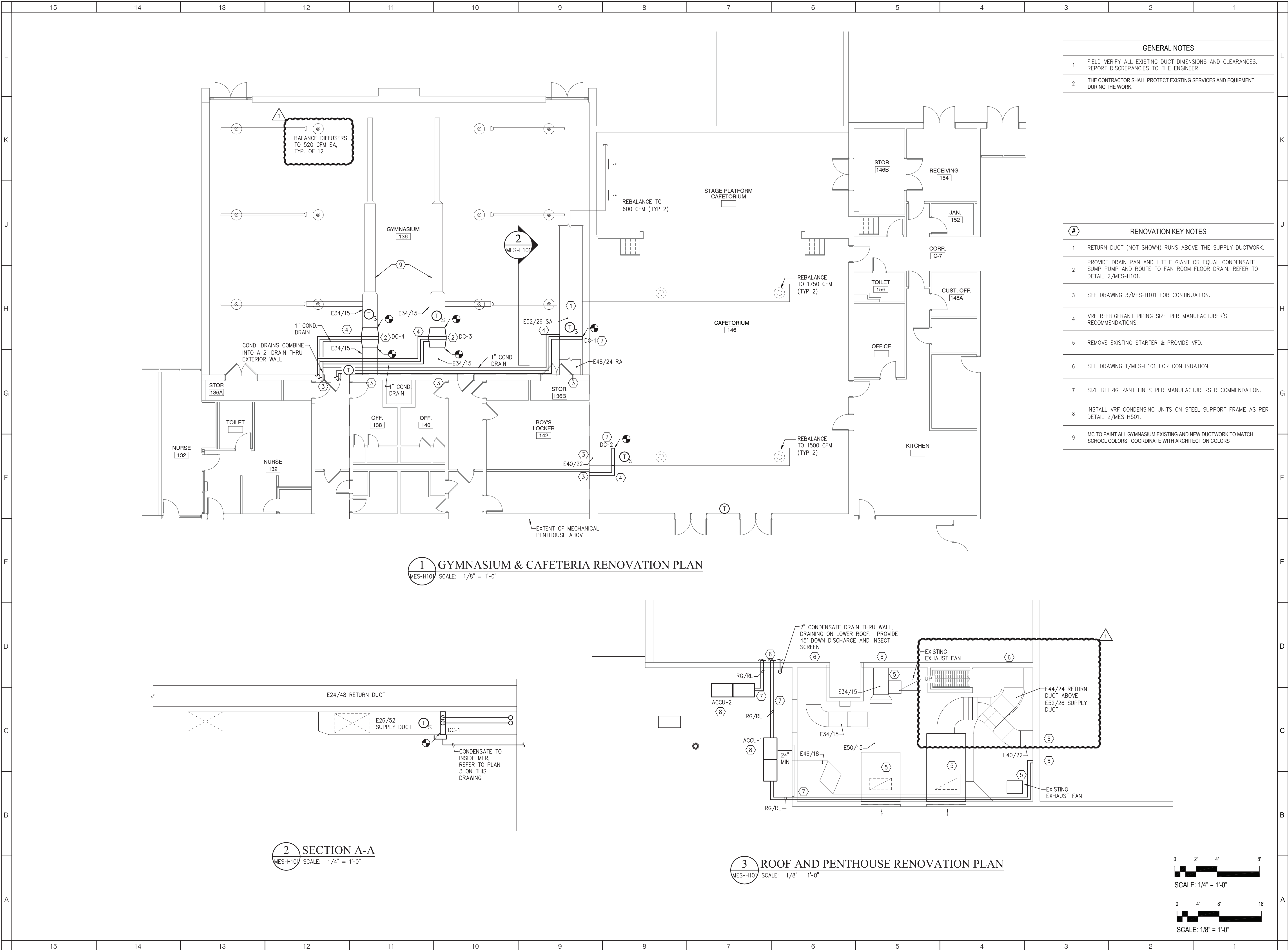
SCALE: AS NOTED

SHEET NAME:
CONTROL DIAGRAMS

SHEET NUMBER:

CES-H701





ARCHITECT

ksqdesign

NEW YORK OKLAHOMA NORTH CAROLINA TEXAS COLORADO

KSQ Design
215 West 40th Street | 15th Floor
New York, NY 10018
914.682.3700 office
www.ksq.design

Owner
Yorktown Central School District
2725 Crompond Road
Yorktown Heights, NY 10598
914 243 8000 office

Construction Manager
Arris Contracting Co.
189 Smith Street
Poughkeepsie, NY 12601
845 473 6300 office
845 473 1453 fax

MEP Engineer
DELTA Engineers, Architects, & Land Surveyors, DPC
220 Harborside Dr, Suite #202
Schenectady, NY 12305
518.690.0046 office

Structural Engineer
Clapper Structural Engineering, PLLC
160 Partition Street
Saugerties, New York 12477
845.943.9601 office
www.clapperstructural.com

Civil Engineer
The Chazen Companies
547 River Street
Troy, New York 12180
518.266.7323 office
www.chazencompanies.com

SED CONTROL NUMBERS

YHS - #66-24-02-06-0-005-028
MS - #66-24-02-06-0-007-027
CES - #66-24-02-06-0-003-022
MES - #66-24-02-06-0-004-025
BES - #66-24-02-06-0-002-020

Yorktown CENTRAL SCHOOL DISTRICT

DISTRICT WIDE IMPROVEMENTS 2020 PHASE II

MOHANSIC ELEMENTARY SCHOOL
704 LOCKSLEY RD.
YORKTOWN HEIGHTS, NY 10598

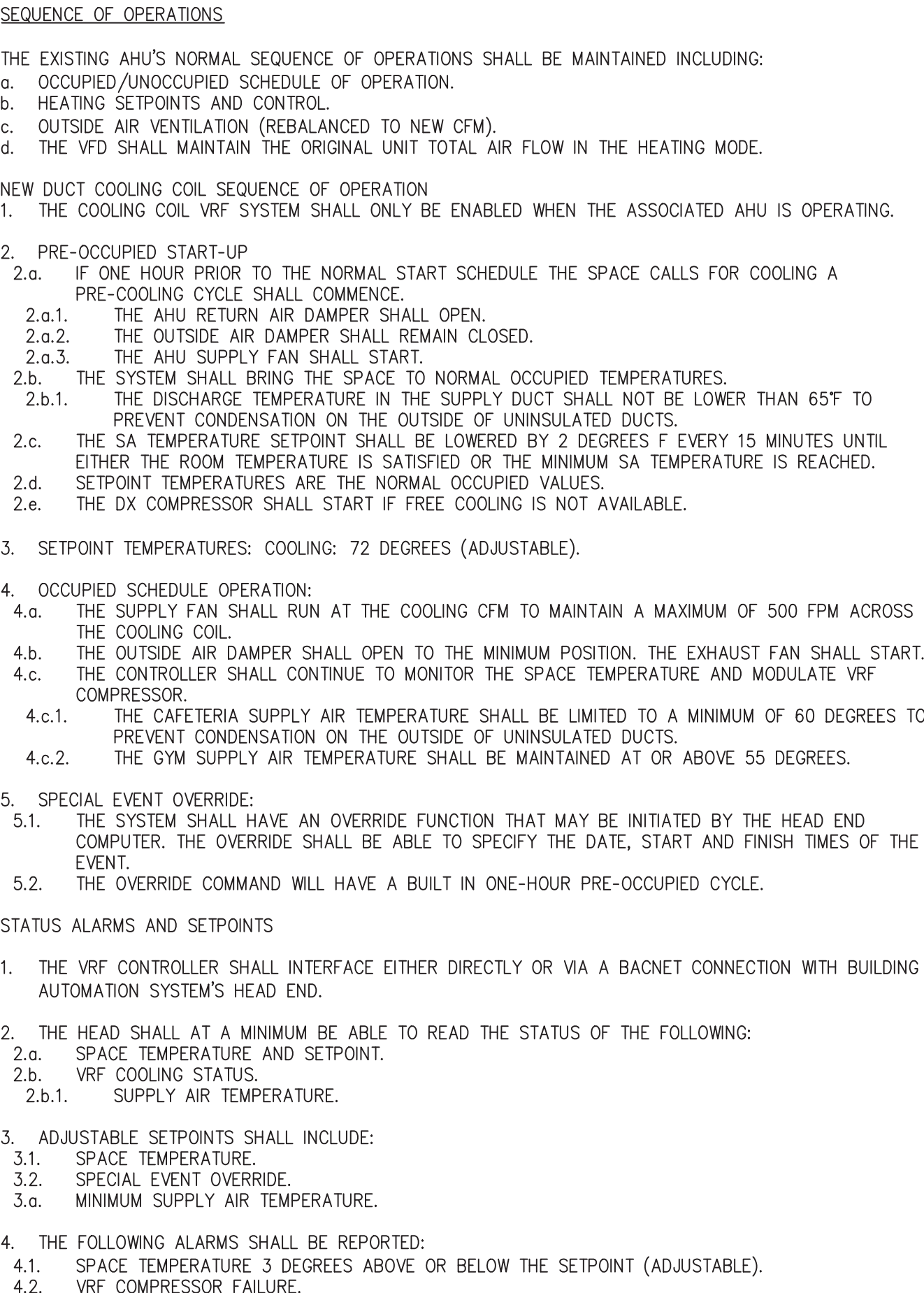
REVISIONS

No.	Description	Date
1	ADDENDUM #2	2021.11.17

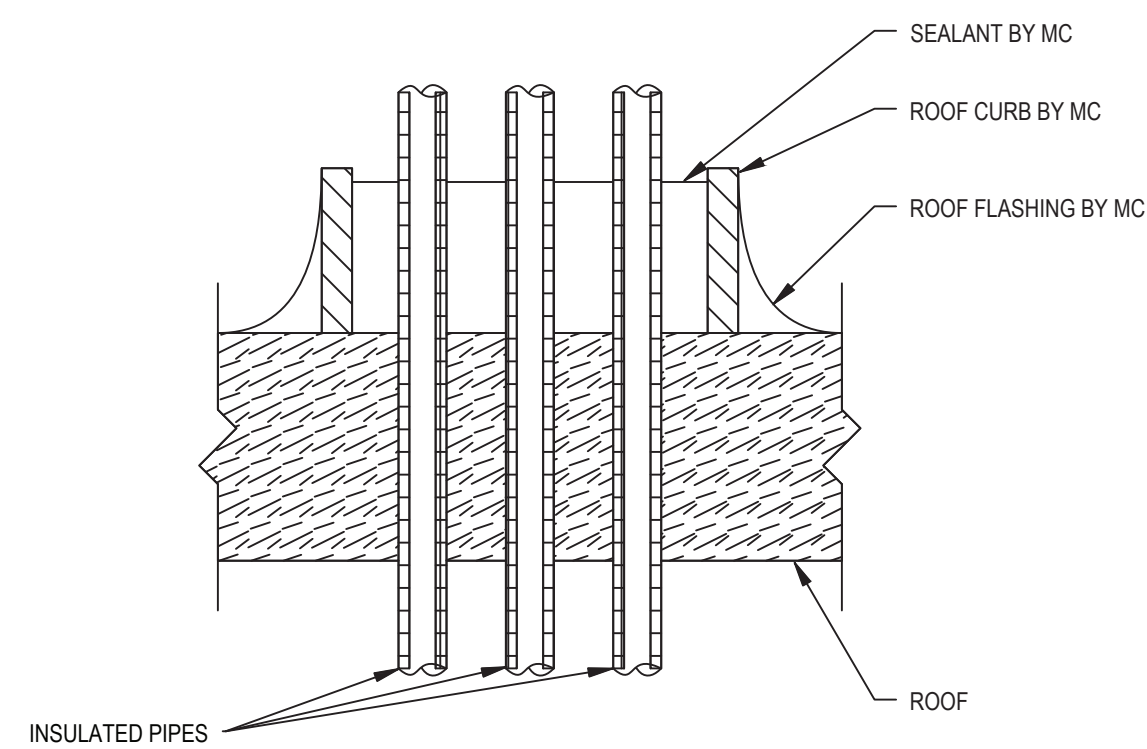
ISSUED: BID ISSUE
DATE: 10/25/2021
SCALE: AS NOTED
SHEET NAME: GYMNASIUM, CAFETERIA, & ROOF RENOVATION PLANS
SHEET NUMBER:

MES-H101

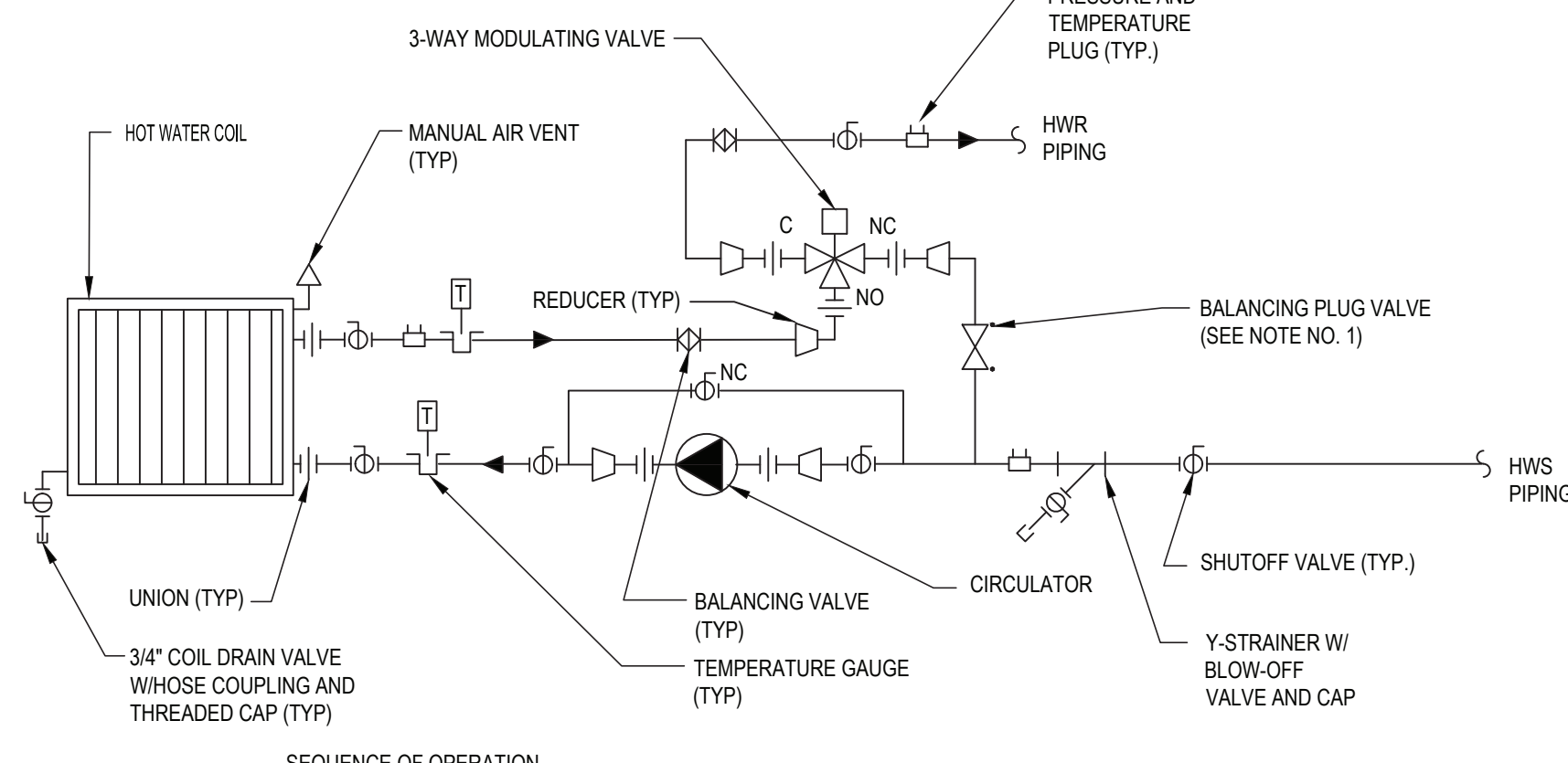
PROJECT NUMBER: 1710402 COPYRIGHT © 2018 KSO ARCHITECTS, PC



1 VRF DUCT COIL SEQUENCE OF OPERATIONS



3 ROOF PIPING PENETRATION DETAIL

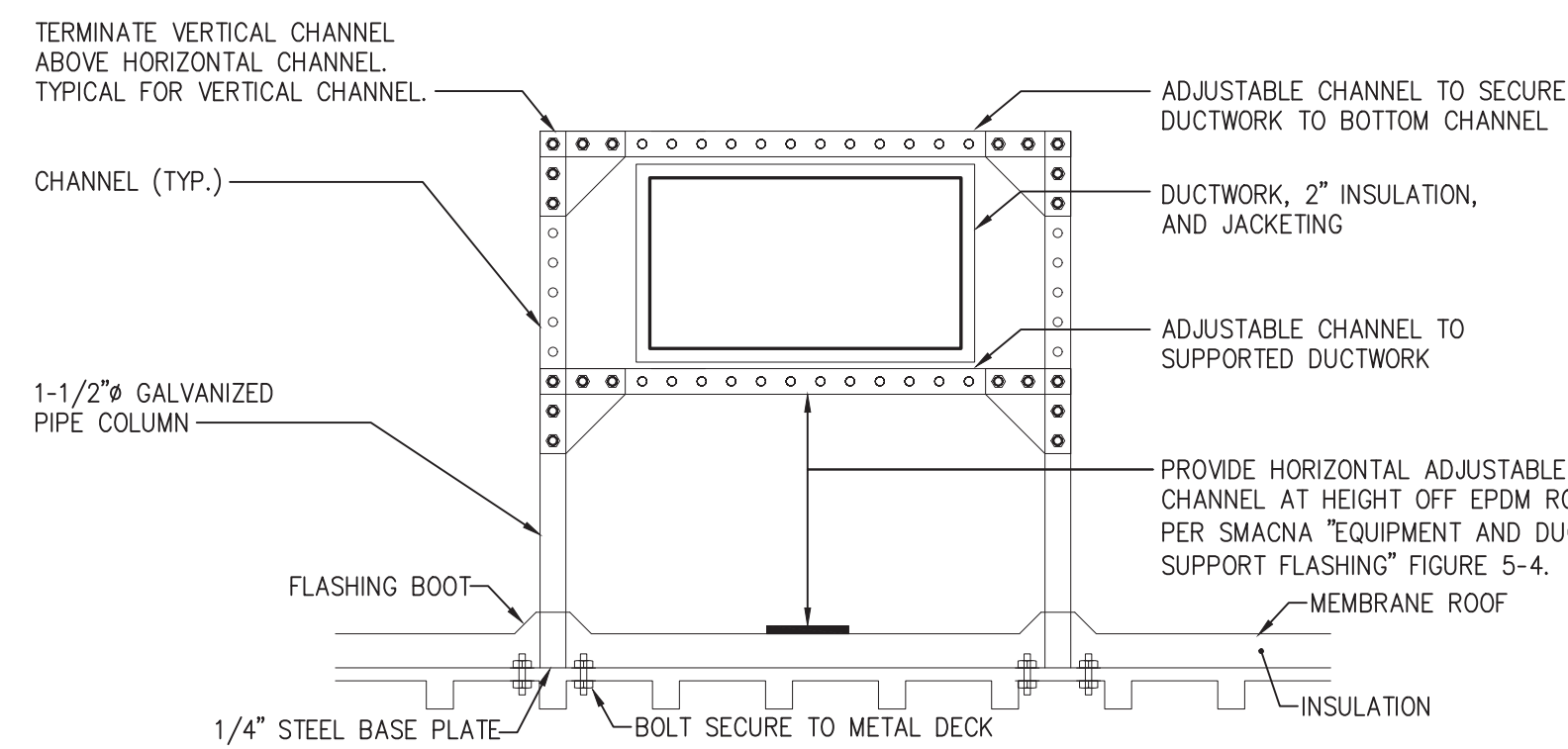


SEQUENCE OF OPERATION

1. PUMP STARTS ON CALL FOR HEAT AND 3-WAY VALVE SHALL MODULATE TO MAINTAIN SPACE TEMPERATURE WITHOUT CYCLING.
2. FREEZE PROTECTION OVERRIDE, OF OA. TEMPERATURE <35° PUMP IS ON 3-WAY OPENS TO BYPASS IF NOT HEATING.

NOTE

1. SET BALANCING VALVES TO EQUAL THE PRESSURE DROP ACROSS THE HYDRONIC COIL



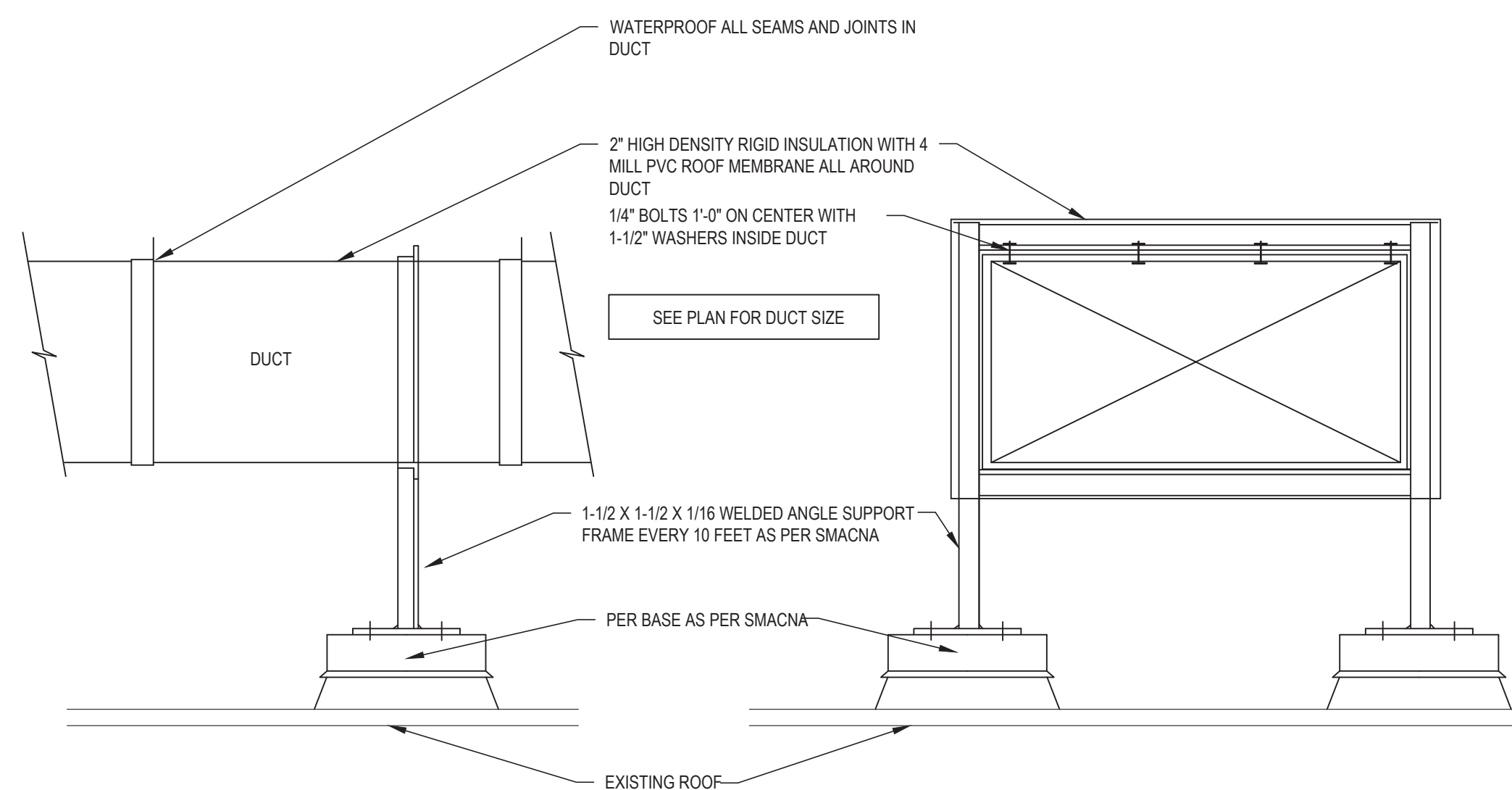
NOTE: SEE SPECIFICATION 23 05 40 "HANGER & SUPPORTS"

NOTE: ADD WIND RESTRAINTS AS NEEDED.

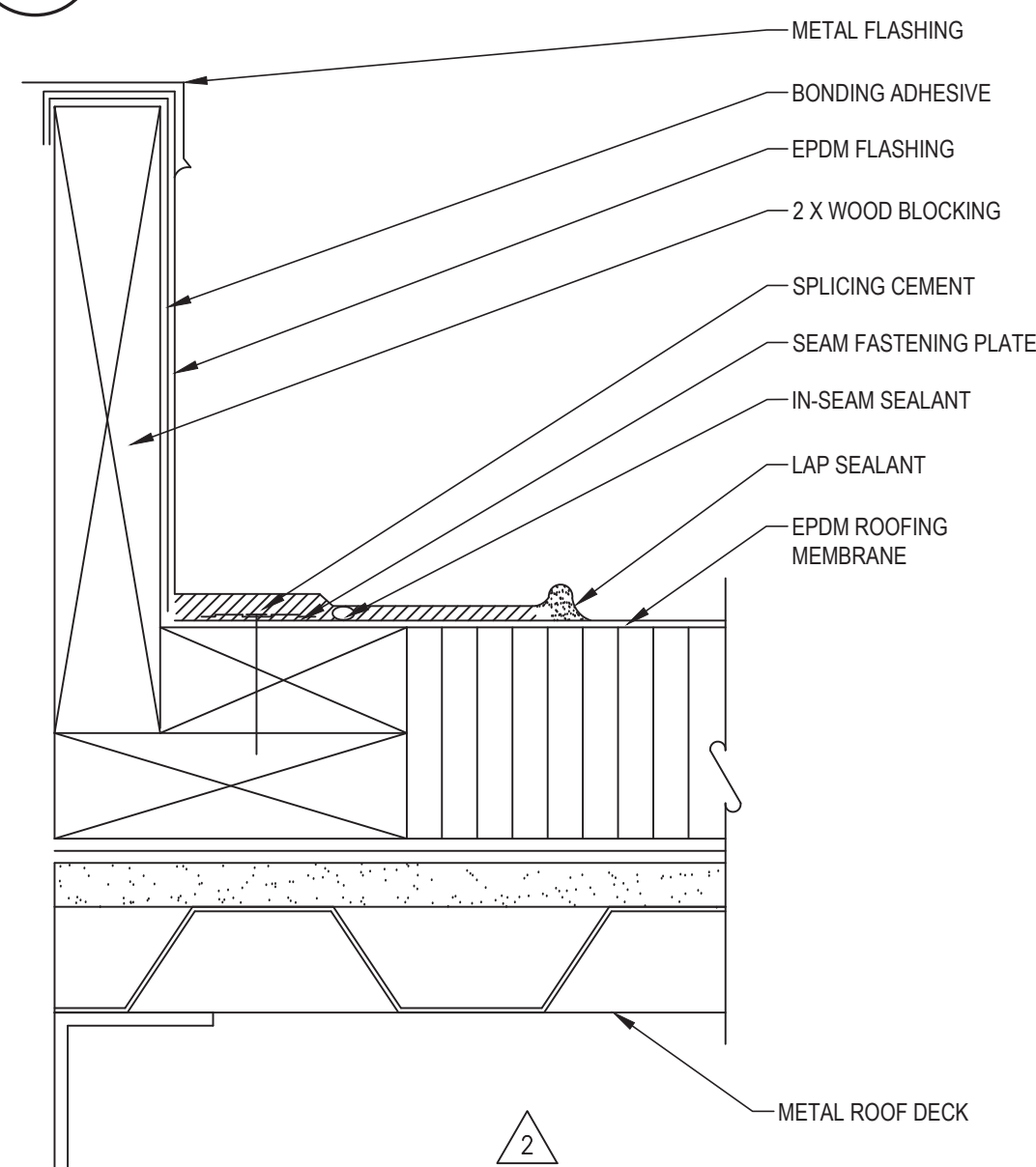
NOTE: SUPPORT DUCTWORK EVERY 10 FT. EVERY OTHER DUCT SUPPORT MAY BE MOUNTED ON FEET DIRECTLY ON ROOF MEMBRANE INSTEAD OF BEING ANCHORED TO THE ROOF DECK.

NOTE: REFER TO 6/MS-H501

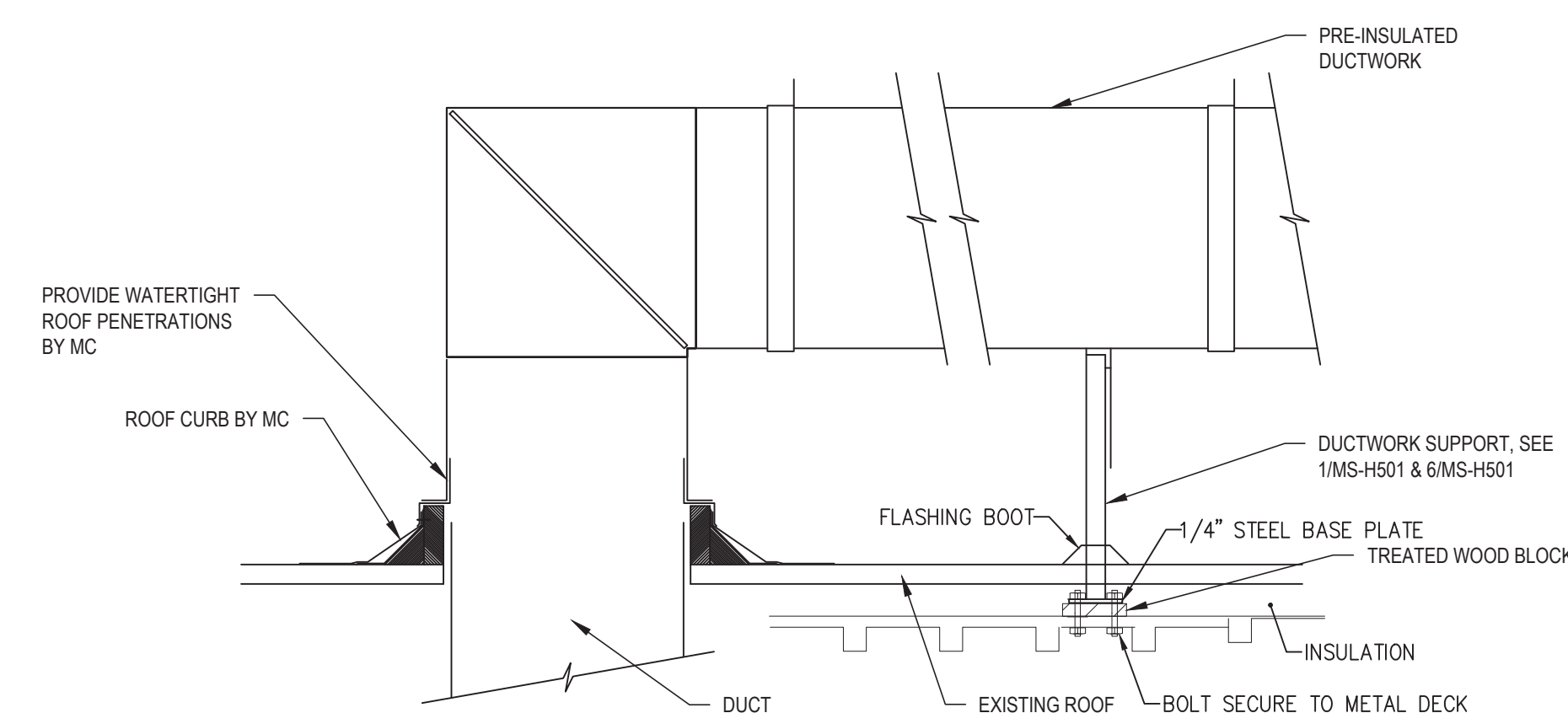
1 DUCTWORK ROOF SUPPORT DETAIL 1 (ANCHORED)
MS-H501 SCALE: NOT TO SCALE



6 DUCTWORK ROOF SUPPORT DETAIL 2 (UN-ANCHORED)
MS-H501 SCALE: NOT TO SCALE



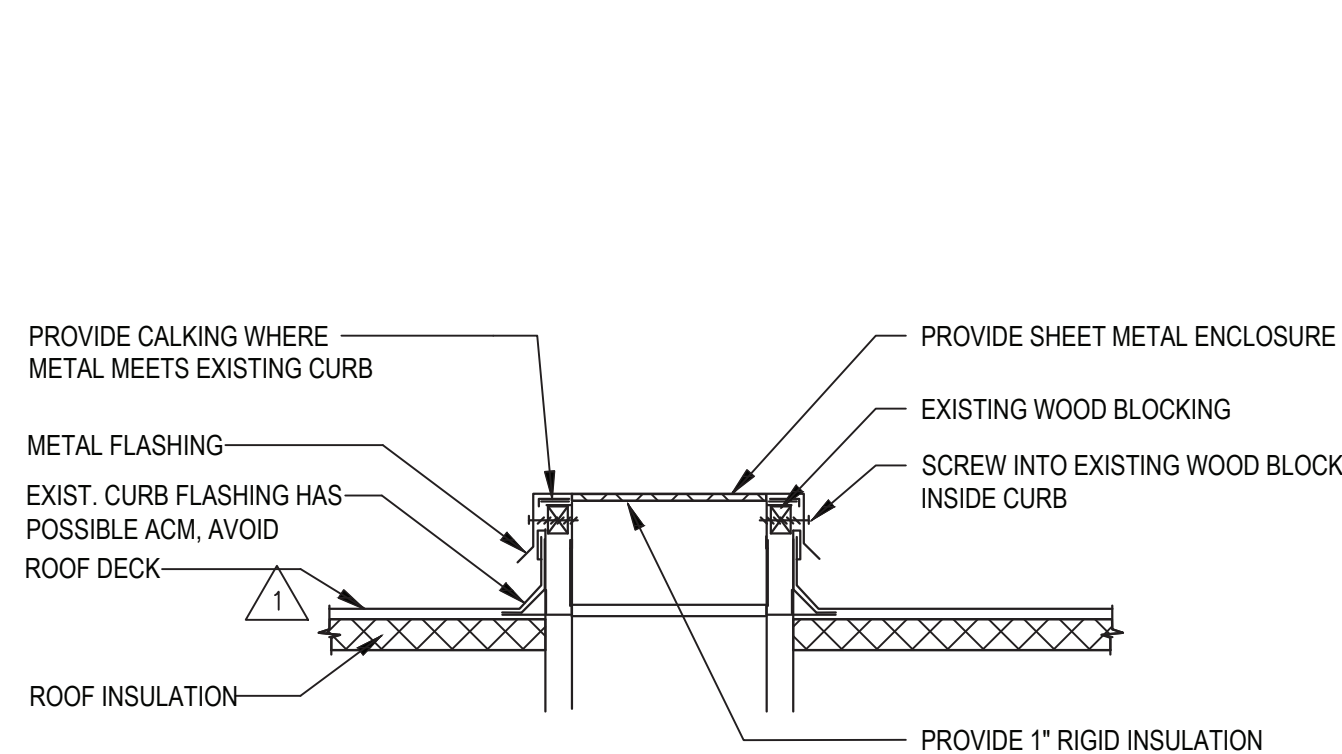
5 RTU ROOF CURB DETAIL
MS-H501 SCALE: NOT TO SCALE



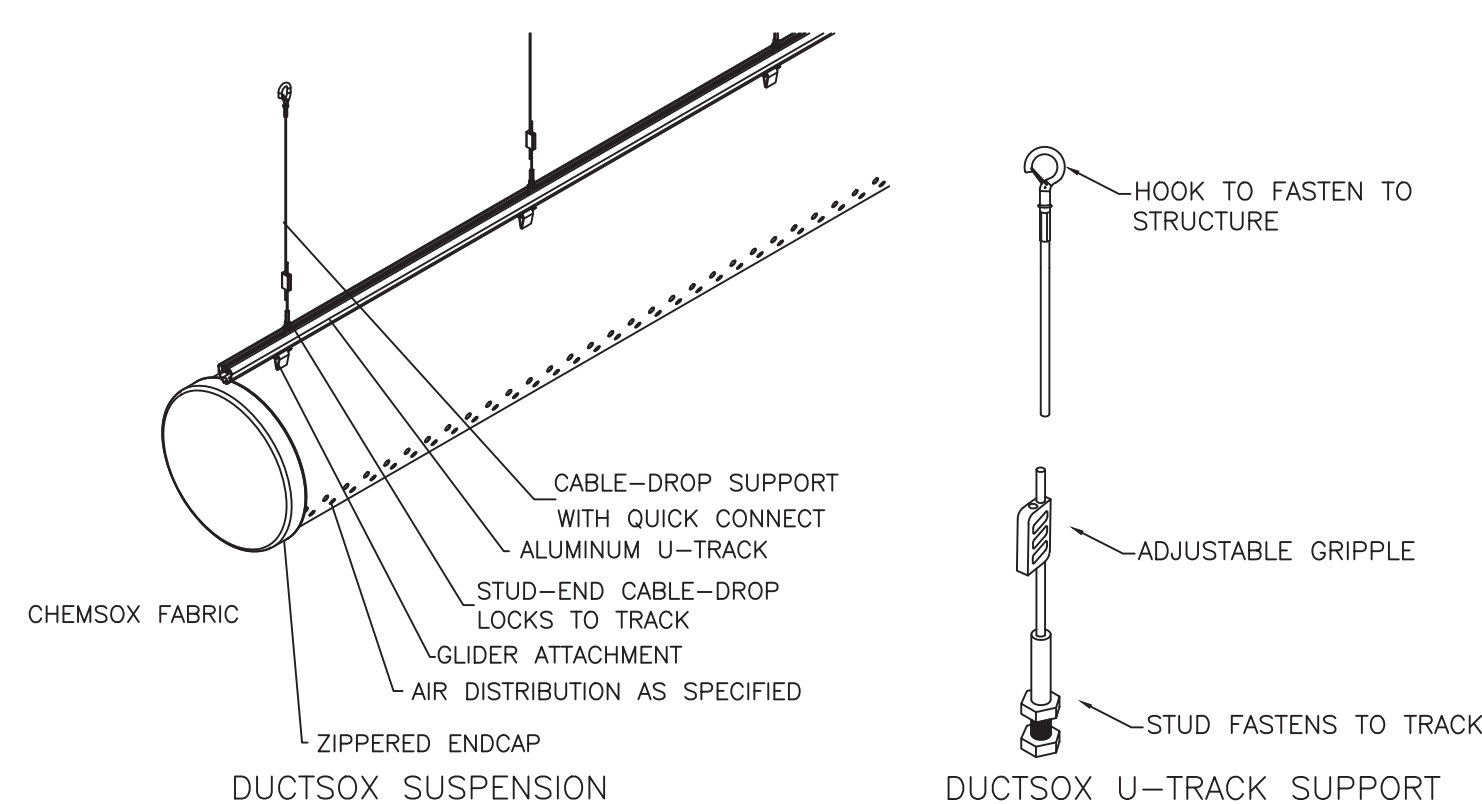
NOTE: MC TO REMOVE ROOFING AND INSULATION AS REQUIRED AND ROOFING CONTRACTOR TO REPAIR ROOFING AND INSULATION PER ROOFING MANUFACTURER'S REQUIREMENTS.

4 DUCTWORK ROOF PENETRATION AND SUPPORT DETAIL

MS-H501 SCALE: NOT TO SCALE



8 ROOF CURB CAP DETAIL
MS-H501 SCALE: NOT TO SCALE



7 DUCTSOX SUSPENSION DETAIL
MS-H501 SCALE: NOT TO SCALE

Space Designation	Area Area SF	Occupants		Ventilation Required		Uncorrected Ventilation	Efficiency Factor	Corrected CFM
		/1000 SF	Total	Per Occup.	Per SF			
MS Gym	6,100	7	43	20.00	0.18	1,950	80%	2,440
Total	6,100		43			1,950	80%	2,440

PUMP SCHEDULE													
TAG	SERVICE	TYPE	FLUID	GPM	HEAD	RPM	HP	ELECTRICAL VOLTS/PH/HZ	DISCONNECT				
									TYPE	FURNISHED BY	INSTALLED BY	BASIS OF DESIGN	MODEL
P-4	RTU-4	IN-LINE CIRC.	HW	15	23	1725	3/4	120/1/60	SWITCH	EC	EC	TACO	1611
P-5	RTU-5	IN-LINE CIRC.	HW	15	23	1725	3/4	120/1/60	SWITCH	EC	EC		

TAG	SERVICE	TYPE	AIRFLOW (CFM)	OUTSIDE AIR (CFM)	SUPPLY FAN				EXHAUST FAN				DX COOLING								HEATING								NOTES	BASIS OF DESIGN		
					ESP (IN. WG)	TOTAL SP (IN. WG)	FAN TYPE	HP	ESP (IN. WG)	TOTAL SP (IN. WG)	FAN TYPE	HP	CAPACITY				ENTERING AIR (MIXED)		LEAVING AIR		ENTERING WATER (°F)	LEAVING WATER (°F)	ENTERING AIR DRY BULB (°F)	LEAVING AIR DRY BULB (°F)	GPM	WATER PD (FT)	AIR PD (IN)	OUTPUT MBH			MEDIUM	
													IEER	NOMINAL TONAGE	TOTAL (MBH)	SENS. (MBH)	LATENT (MBH)	DRY BULB (°F)	WET BULB (°F)	DRY BULB (°F)												WET BULB (°F)
RTU-4	GYMNASIUM	RTU	6250	1300	1.5	3	PLENUM	7.5	.75		PLENUM	5	14.2	16	200.18	166.83	33	79	64.76	53.8	53.64	180	150	59.4	99	15	1.1	0.5	276	HW	1,2,3,4,5,6	AAON
RTU-5	GYMNASIUM	RTU	6250	1300	1.5	3	PLENUM	7.5	.75		PLENUM	5	14.2	16	200.18	166.83	33	79	64.76	53.8	53.64	180	150	59.4	99	15	1.1	0.5	276	HW	1,2,3,4,5,6	AAON

1. COORDINATE SIZE AND LOCATION OF UNIT WITH EXISTING FRAMING, MOUNT/SECURE/ANCHOR UNIT ON DUNNAGE PROVIDED BY MC.

2. COORDINATE SIZE AND LOCATION OF ROOF PENETRATIONS WITH GC FOR SUPPLY AND RETURN DUCT.

3. ALL WORK IS BY MC (ABATEMENT, STEEL, CURBS, ROOF FLASHING, ETC.). ONLY ITEM EXCLUDED IS ELECTRICAL BY EC.

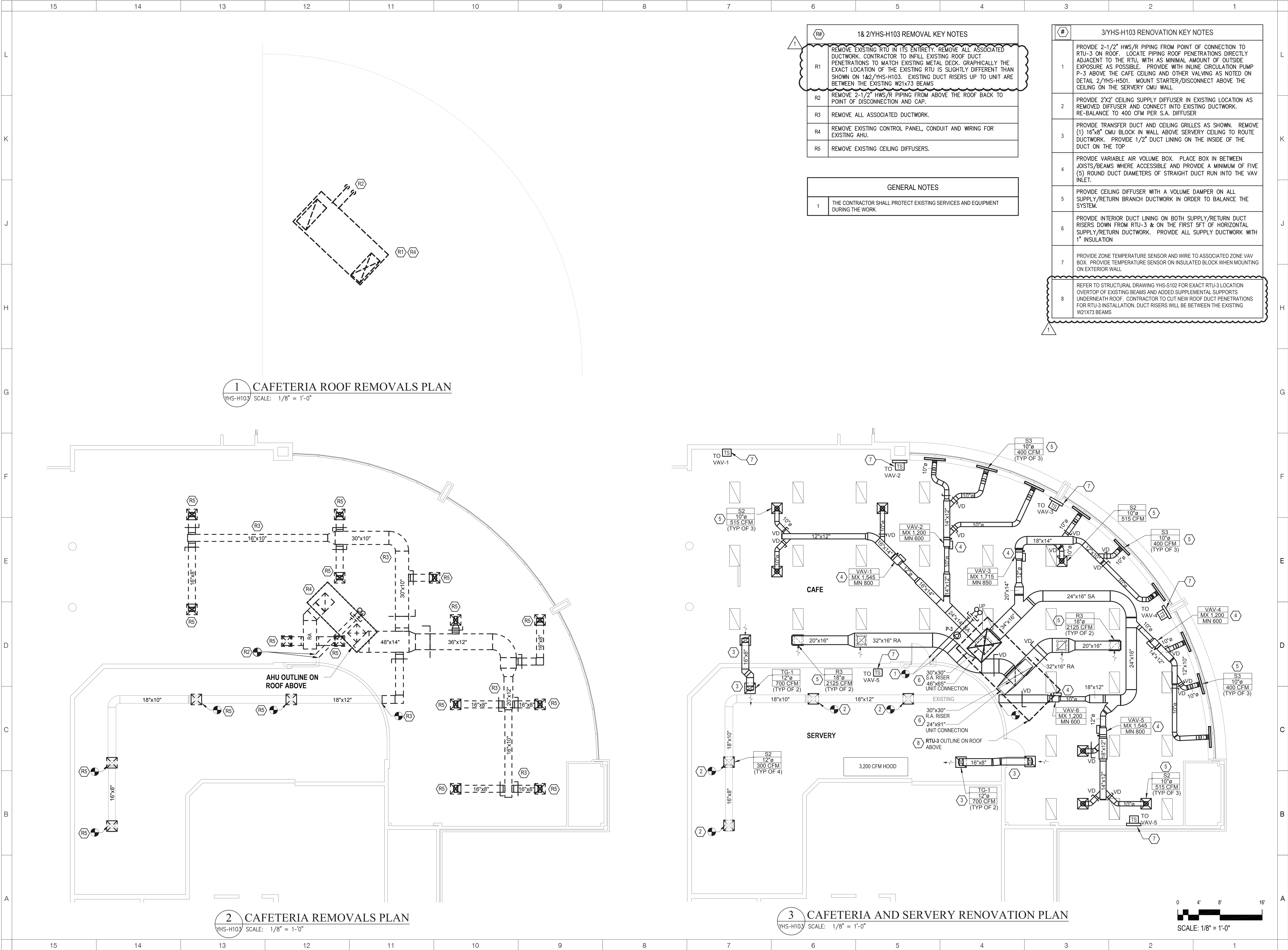
4. PROVIDE SMOKE DETECTOR IN RETURN AIR STREAM

5. PROVIDE 2 STAGE FILTER; 2" MERV-B & 4" MERV-14

6. RTU SHALL HAVE A FRONT, HORIZONTAL DISCHARGE AND BOTTOM, VERTICAL RETURN

1. COORDINATE SIZE AND LOCATION OF UNIT WITH EXISTING FRAMING. MOUNT/SECURE/ANCHOR UNIT ON DUNNAGE PROVIDED BY MC.
2. COORDINATE SIZE AND LOCATION OF ROOF PENETRATIONS WITH GC FOR SUPPLY AND RETURN DUCT.
3. ALL WORK IS BY MC (ABATEMENT, STEEL, CURBS, ROOF FLASHING, ETC.). ONLY ITEM EXCLUDED IS ELECTRICAL BY EC.

4. PROVIDE SMOKE DETECTOR IN RETURN AIR STREAM
5. PROVIDE 2 STAGE FILTER; 2" MERV-8 & 4" MERV-14
6. RTU SHALL HAVE A FRONT, HORIZONTAL DISCHARGE AND BOTTOM, VERTICAL RETURN



ARCHITECT

ksqdesign

NEW YORK OKLAHOMA NORTH CAROLINA TEXAS COLORADO

KSQ Design
215 West 40th Street | 15th Floor
New York, NY 10018
914.682.3700 office
www.ksq.design

Owner
Yorktown Central School District
2725 Crompond Road
Yorktown Heights, NY 10598
914 243 8000 office

Construction Manager
Arris Contracting Co.
189 Smith Street
Poughkeepsie, NY 12601
845 473 6300 office
845 473 1453 fax

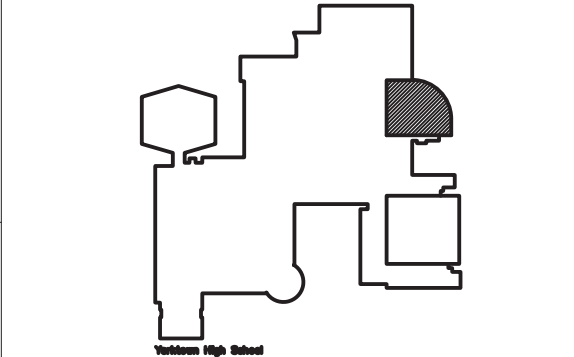
MEP Engineer
DELTA Engineers, Architects, & Land Surveyors, DPC
220 Hartonside Dr, Suite #202
Schenectady, NY 12305
518.690.0046 office

Structural Engineer
Clapper Structural Engineering, PLLC
160 Partition Street
Saugerties, New York 12477
845.943.9601 office
www.clapperstructural.com

Civil Engineer
The Chazen Companies
547 River Street
Troy, New York 12180
518.266.7323 office
www.chazencompanies.com

SED CONTROL NUMBERS

YHS -	#66-24-02-06-0-005-028
MS -	#66-24-02-06-0-007-027
CES -	#66-24-02-06-0-003-022
MES -	#66-24-02-06-0-004-025
BES -	#66-24-02-06-0-002-020



DISTRICT WIDE IMPROVEMENTS 2020 PHASE II

**YORKTOWN HIGH SCHOOL
2727 CROMPOND RD.
YORKTOWN HEIGHTS, NY 10598**

REVISIONS

No.	Description	Date
1	ADDENDUM #2	2021.11.17

ISSUED: BID ISSUE
DATE: 10/25/2021
SCALE: AS NOTED
SHEET NAME: CAFETERIA & SERVERY REMOVAL & RENOVATION PLANS
SHEET NUMBER:

YHS-H103