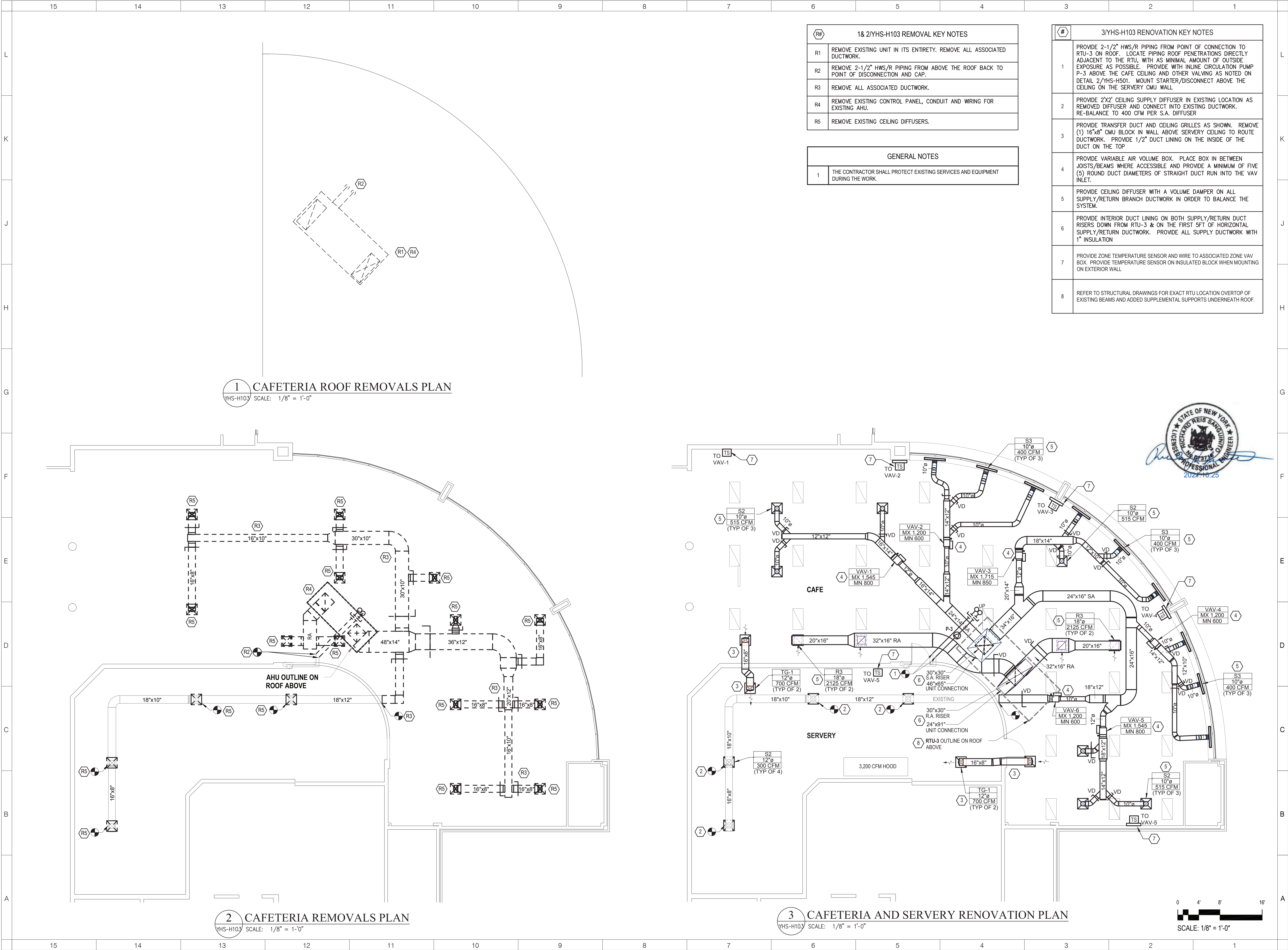


[illegible]



#	1& 2/YHS-H103 REMOVAL KEY NOTES
R1	REMOVE EXISTING UNIT IN ITS ENTIRETY. REMOVE ALL ASSOCIATED DUCTWORK.
R2	REMOVE 2-1/2" HWS/R PIPING FROM ABOVE THE ROOF BACK TO POINT OF DISCONNECTION AND CAP.
R3	REMOVE ALL ASSOCIATED DUCTWORK.
R4	REMOVE EXISTING CONTROL PANEL, CONDUIT AND WIRING FOR EXISTING AHU.
R5	REMOVE EXISTING CEILING DIFFUSERS.

GENERAL NOTES	
1	THE CONTRACTOR SHALL PROTECT EXISTING SERVICES AND EQUIPMENT DURING THE WORK.

#	3/YHS-H103 RENOVATION KEY NOTES
1	PROVIDE 2-1/2" HWS/R PIPING FROM POINT OF CONNECTION TO RTU-3 ON ROOF. LOCATE PIPING ROOF PENETRATIONS DIRECTLY ADJACENT TO THE RTU, WITH AS MINIMAL AMOUNT OF OUTSIDE EXPOSURE AS POSSIBLE. PROVIDE WITH INLINE CIRCULATION PUMP P-3 ABOVE THE CAFE CEILING AND OTHER VALVING AS NOTED ON DETAIL 2/YHS-H501. MOUNT STARTER/DISCONNECT ABOVE THE CEILING ON THE SERVERY CMU WALL.
2	PROVIDE 2'X2' CEILING SUPPLY DIFFUSER IN EXISTING LOCATION AS REMOVED DIFFUSER AND CONNECT INTO EXISTING DUCTWORK. RE-BALANCE TO 400 CFM PER S.A. DIFFUSER
3	PROVIDE TRANSFER DUCT AND CEILING GRILLES AS SHOWN. REMOVE (1) 16"x8" CMU BLOCK IN WALL ABOVE SERVERY CEILING TO ROUTE DUCTWORK. PROVIDE 1/2" DUCT LINING ON THE INSIDE OF THE DUCT ON THE TOP
4	PROVIDE VARIABLE AIR VOLUME BOX. PLACE BOX IN BETWEEN JOISTS/BEAMS WHERE ACCESSIBLE AND PROVIDE A MINIMUM OF FIVE (5) ROUND DUCT DIAMETERS OF STRAIGHT DUCT RUN INTO THE VAV INLET.
5	PROVIDE CEILING DIFFUSER WITH A VOLUME DAMPER ON ALL SUPPLY/RETURN BRANCH DUCTWORK IN ORDER TO BALANCE THE SYSTEM.
6	PROVIDE INTERIOR DUCT LINING ON BOTH SUPPLY/RETURN DUCT RISERS DOWN FROM RTU-3 & ON THE FIRST 5FT OF HORIZONTAL SUPPLY/RETURN DUCTWORK. PROVIDE ALL SUPPLY DUCTWORK WITH 1" INSULATION
7	PROVIDE ZONE TEMPERATURE SENSOR AND WIRE TO ASSOCIATED ZONE VAV BOX. PROVIDE TEMPERATURE SENSOR ON INSULATED BLOCK WHEN MOUNTING ON EXTERIOR WALL
8	REFER TO STRUCTURAL DRAWINGS FOR EXACT RTU LOCATION OVERTOP OF EXISTING BEAMS AND ADDED SUPPLEMENTAL SUPPORTS UNDERNEATH ROOF.

ARCHITECT

NEW YORK OKLAHOMA NORTH CAROLINA TEXAS

KSQ Design
215 West 40th Street | 15th Floor
New York, NY 10018
914.682.3700 office
www.ksq.design

Owner
Yorktown Central School District
2725 Crompond Road
Yorktown Heights, NY 10598
914 243 8000 office

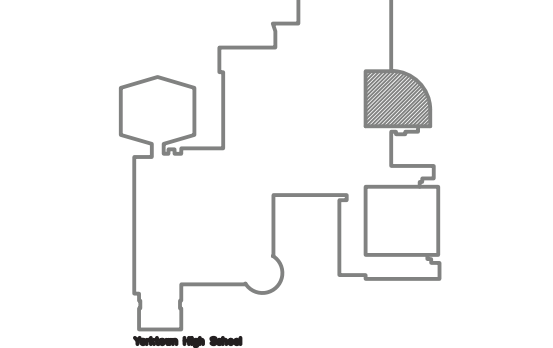
Construction Manager
Arris Contracting Co.
189 Smith Street
Poughkeepsie, NY 12601
845-473 6300 office
845-473 1453 fax

MEP Engineer
DELTA Engineers, Architects, & Land Surveyors, DPC
220 Harborside Dr. Suite #202
Schenectady, NY 12305
518.690.0046 office

Structural Engineer
Clapper Structural Engineering, PLLC
160 Partition Street
Saugerties, New York 12477
845.943.9601 office
www.clapperstructural.com

Civil Engineer
The Chazen Companies
547 River Street
Troy, New York 12180
518.266.7323 office
www.chazencompanies.com

SED CONTROL NUMBERS	
YHS -	#66-24-02-06-0-005-028
MS -	#66-24-02-06-0-007-027
CES -	#66-24-02-06-0-003-022
MES -	#66-24-02-06-0-004-025
BES -	#66-24-02-06-0-002-020



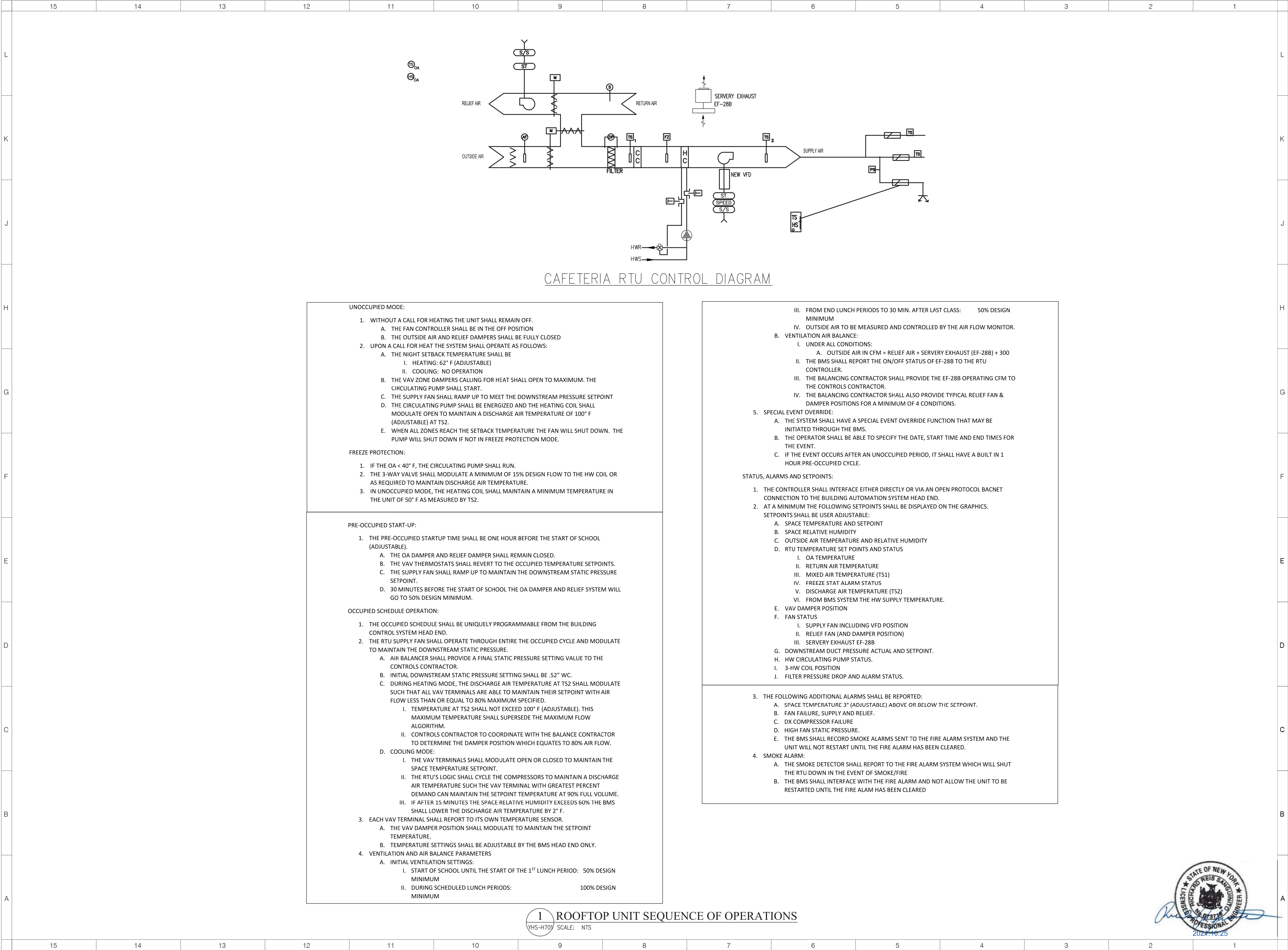
DISTRICT WIDE
IMPROVEMENTS 2020
PHASE II

YORKTOWN HIGH SCHOOL
2727 CROMPOND RD.
YORKTOWN HEIGHTS, NY 10598

REVISIONS		
No.	Description	Date

ISSUED: BID ISSUE
DATE: 10/25/2021
SCALE: AS NOTED
SHEET NAME: CAFETERIA & SERVERY REMOVAL & RENOVATION PLANS
SHEET NUMBER:

YHS-H103



1 ROOFTOP UNIT SEQUENCE OF OPERATIONS
YHS-H701 SCALE: NTS



ARCHITECT

ksqdesign

NEW YORK OKLAHOMA NORTH CAROLINA
TEXAS COLORADO

KSQ Design
215 West 40th Street | 15th Floor
New York, NY 10018
914.682.3700 office
www.ksq.design

Owner
Yorktown Central School District
2725 Crompond Road
Yorktown Heights, NY 10598
914 243 8000 office

Construction Manager
Arris Contracting Co.
189 Smith Street
Poughkeepsie, NY 12601
845-473 6300 office
845-473 1453 fax

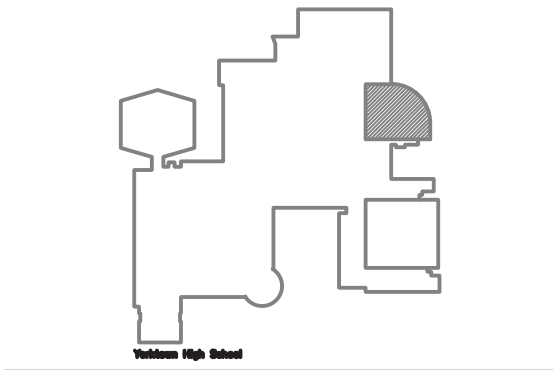
MEP Engineer
DELTA Engineers, Architects, & Land
Surveyors, DPC
220 Harborside Dr, Suite #202
Schenectady, NY 12305
518.690.0046 office

Structural Engineer
Clapper Structural Engineering, PLLC
160 Partition Street
Saugerties, New York 12477
845.943.9601 office
www.clapperstructural.com

Civil Engineer
The Chazen Companies
547 River Street
Troy, New York 12180
518.266.7323 office
www.chazencompanies.com

SED CONTROL NUMBERS

YHS -	#66-24-02-06-0-005-028
MS -	#66-24-02-06-0-007-027
CES -	#66-24-02-06-0-003-022
MES -	#66-24-02-06-0-004-025
BES -	#66-24-02-06-0-002-020



DISTRICT WIDE
IMPROVEMENTS 2020
PHASE II

YORKTOWN HIGH SCHOOL
2727 CROMPOND RD.
YORKTOWN HEIGHTS, NY 10598

REVISIONS

No.	Description	Date

ISSUED: BID ISSUE

DATE: 10/25/2021

SCALE: AS NOTED

SHEET NAME:
CONTROL DIAGRAMS

SHEET NUMBER:
YHS-H701