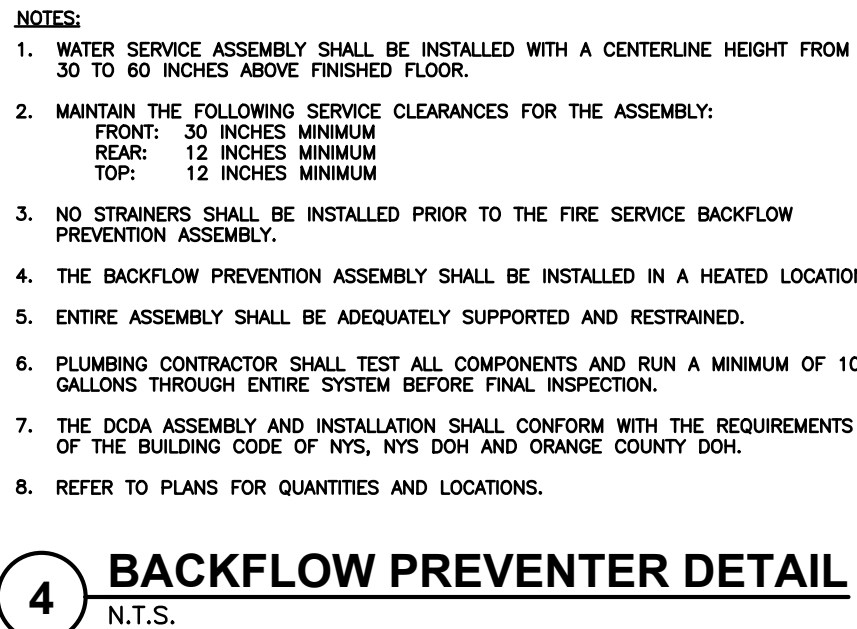


FIRE PROTECTION SYSTEM NOTES:

1. THE INTENT OF THESE DRAWINGS IS TO PROVIDE A COMPLETE & OPERATIVE SPRINKLER SYSTEM IN ACCORDANCE WITH ALL APPLICABLE CODES AS REQUIRED. THIS CONTRACTOR SHALL MEET THE INTENT OF THE PLANS & SPECIFICATIONS AS WELL AS THE ACCOMPANYING DOCUMENTS. THIS CONTRACTOR SHALL PROVIDE ALL ADDITIONAL MATERIAL & LABOR NOT SPECIFICALLY LISTED OR DIRECTED WHICH MAY BE REQUIRED TO MEET THE INTENT OF THE PLANS & SPECIFICATIONS FOR A COMPLETE AND OPERABLE SYSTEM.
2. IT IS THIS CONTRACTOR'S SOLE RESPONSIBILITY TO PROVIDE ALL CUTTING, PATCHING, BOXING, PRIME AND FINISH WORK REQUIRED TO COMPLETE THE INSTALLATION. THIS SHALL INCLUDE, BUT NOT BE LIMITED TO, THE FOLLOWING:
 - A. WATER FLOW & PRESSURE TESTING OF AVAILABLE WATER SUPPLY SYSTEM.
 - B. PIPE SIZING VIA THE HYDRAULIC PIPE SIZE METHOD PER NFPA-13.
 - C. THE INSTALLATION OF ALL PIPING AND COORDINATION OF WORK WITH OTHER SUB-CONTRACTORS.
 - D. INSPECTION & TESTING OF ALL PIPING & DEVICES, OBTAINING APPROVALS & PAYING OF ALL FEES AS REQUIRED FOR THE SYSTEM INSTALLATION & APPROVALS.
 - E. ONE YEAR GUARANTEE ON MATERIAL & WORKMANSHIP. COMPLETE WRITING INSTRUCTIONS INCLUDING MAINTENANCE & TESTING INSTRUCTIONS (POSTED IN SPRINKLER CONTROL AREA).
3. DO NOT PIERCE ANY STRUCTURAL MEMBER.
4. CONTRACTOR SHALL COORDINATE THE INSTALLATION OF ALL PIPING WITH THE BUILDING STRUCTURE, AS WELL AS WITH OTHER TRADES DURING CONSTRUCTION. SEE PLANS FOR ADDITIONAL REQUIREMENTS. CONTRACTOR SHALL OBTAIN APPROVAL & COORDINATE WITH THE LOCAL AUTHORITY HAVING JURISDICTION.
5. ALL SPRINKLER DISTRIBUTION PIPING DOWNSTREAM OF THE RESIDENTIAL RISER ASSEMBLY SHALL BE CHLORINATED POLYVINYL CHLORIDE (CPVC) PIPE, MEETING THE STANDARDS OF ASTM F 442. NON-METALLIC FITTINGS SHALL BE RATED FOR 175 PSI @ 70°F.
6. THE SPRINKLER SYSTEM SUB-CONTRACTOR AND THE FIRE ALARM SYSTEM SUB-CONTRACTOR SHALL COORDINATE THE SYSTEM WITH THE FIRE DEPARTMENT AND OBTAIN ALL APPROVALS AND PAY ALL FEES.
7. SUPERVISORY SWITCHES AND FLOW SWITCHES TO BE FURNISHED AND INSTALLED BY THIS CONTRACTOR. CONNECTIONS TO BUILDING FIRE ALARM SYSTEM BY FIRE ALARM CONTRACTOR.
8. SPRINKLER CONTRACTOR SHALL PROVIDE ENGINEER WITH SIGNED & SEALED HYDRAULIC CALCULATIONS AND PIPE LAYOUT FOR REVIEW AND APPROVAL.
9. CONTRACTOR SHALL SEAL ALL PIPE PENETRATIONS THROUGH RAISED WALLS AND CEILINGS WITH INTUMESCENT TYPE FIRE SEALANT CAULK. PROVIDE ESCUTCHEONS AT ALL PENETRATIONS IN FINISHED AREAS.
10. IN GENERAL, SPRINKLERS SHALL BE ARRANGED FOR A EXTENSIVE COVERAGE AS SHOWN ON PLANS WHILE AVOIDING LIGHTS, DIFFUSERS, ETC. IT SHALL BE THE RESPONSIBILITY OF THE CONTRACTOR TO COORDINATE HIS PIPING AND SPRINKLERS FOR PROPER COVERAGE IN EACH AREA. AAD SPRINKLERS AS REQUIRED FOR PROPER COVERAGE AS DICTATED BY ACTUAL FIELD CONDITIONS.
11. ALL FIRE PROTECTION SYSTEMS PROVIDED SHALL BE U.L. LISTED AND F.M. APPROVED AS APPLICABLE.
12. CONTRACTOR SHALL PROVIDE AND INSTALL ALL COMPONENTS INDICATED ON DETAIL SHEETS, PLANS, SPECIFICATIONS AND ALL PERTINENT EQUIPMENT REQUIRED FOR A COMPLETE AND WORKABLE SYSTEM.
13. CONTRACT CLOSE OUT: IN THE PRESENCE OF THE OWNER, ENGINEER OR ARCHITECT; DEMONSTRATING OPERATION OF SYSTEMS AND THAT ALL SPECIFICATIONS HAVE BEEN MET TO THE SATISFACTION OF ALL PARTIES.
14. IT IS THE INTENTION THAT THESE SPECIFICATIONS, AND DRAWINGS ACCOMPANYING SAME, SHALL PROVIDE FOR THE FURNISHING AND INSTALLING OF THE FIRE PROTECTION SYSTEMS COMPLETE AS SPECIFIED AND SHOWN. ANY WORK SHOWN ON WORK SHEETS OR NOT PARTICULARLY DESCRIBED IN THE SPECIFICATIONS OR VICE VERSA, OR ANY WORK CHANGES WHICH MAY BE EVIDENTLY NECESSARY TO COMPLETE THE INSTALLATION SHALL BE FURNISHED BY THIS CONTRACTOR.
15. IT IS THE INTENT AND PURPOSE OF THESE SPECIFICATIONS AND DRAWINGS TO INCLUDE AND PROVIDE FOR ALL MATERIALS, APPLIANCES AND LABOR TO PROPERLY COMPLETE AND LEAVE IN PERFECT WORKING CONDITION THE ENTIRE SYSTEM HEREINAFTER SPECIFIED, ANY MATERIAL, LABOR OR APPLIANCE NOT SPECIFICALLY MENTIONED IN THESE SPECIFICATIONS OR SHOWN ON THE DRAWINGS, BUT NECESSARY FOR A COMPLETE INSTALLATION MUST BE FURNISHED BY THIS CONTRACTOR.
16. IT IS THE INTENT OF THESE PLANS AND SPECIFICATIONS TO PROVIDE



STAINLESS STEEL ESCHUTCHION PLATE (FINISHED AREAS ONLY)

EXTERIOR WALL

LINK SEAL

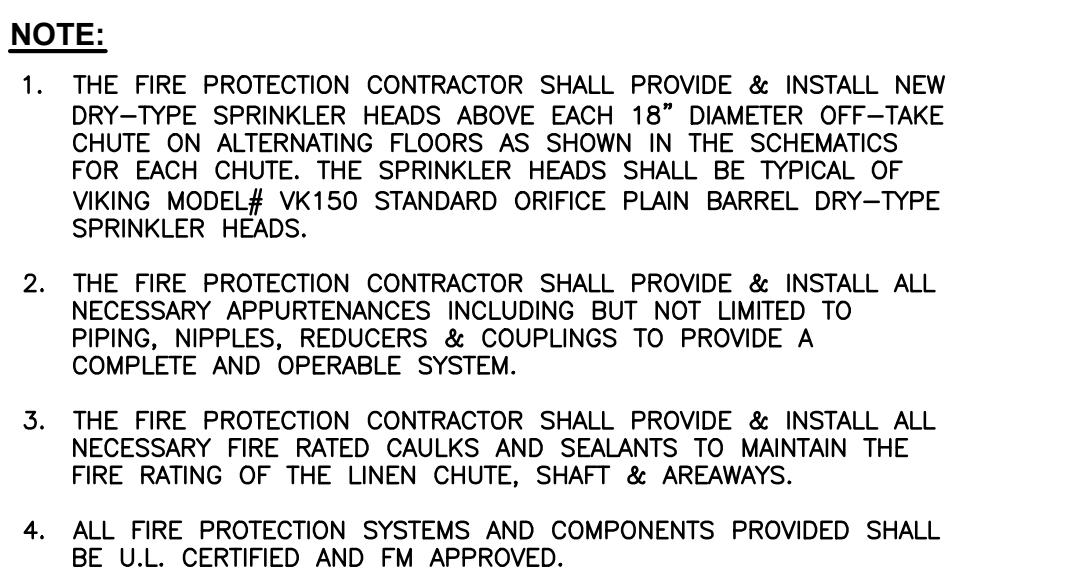
PIPE

SCHEDULE 40 GALVANIZED STEEL SLEEVE

STAINLESS STEEL ESCHUTCHION PLATE


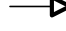
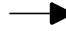
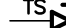



WALL CONSTRUCTION (SEE ARCH. DWGS.)

3 EXTERIOR WALL PENETRATION DETAIL





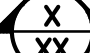
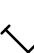





6 SCHEMATIC SECTION FOR LINEN CHUTES A, & B
N.T.S.

VALVE SYMBOLS

	OS&Y GATE VALVE
	OS&Y WITH TAMPER SWITCH
	OS&Y WITH TAMPER SWITCH
	GATE VALVE WITH 3/4" HOSE ADAPTER
	CHECK VALVE
	FLEXIBLE CONNECTION
	BALL VALVE

FIRE PROTECTION LINE TYPES

--- or ----	EXISTING SPRINKLER PIPE TO BE REMOVED
_____	EXISTING SPRINKLER PIPE TO REMAIN
—————	NEW SPRINKLER PIPE

<u>GENERAL SYMBOLS</u>	
	POINT OF CONNECTION BETWEEN NEW AND EXISTING WORK
	POINT OF DISCONNECT
	INDICATES SECTION LETTER
	INDICATES DRAWING NUMBER WHERE LOCATED
	FIRE HOSE SIAMESE CONNECTION
	FIRE HYDRANT
	FIRE PUMP MOTOR
	PENDANT SPRINKLER HEAD
	SIDE WALL SPRINKLER HEAD
	UPRIGHT SPRINKLER HEAD

CONSULTANTS:

FELLENZER 
ENGINEERING LLP

22 Mulberry St., Suite 2A,
Middletown, NY 10940

t 845-343-1481 fx 855-320-8735 Project #: 15-345A

www.fellp.com

[illegible]

"ALTERATION OF THIS DOCUMENT EXCEPT BY A LICENSED PROFESSIONAL IS ILLEGAL."			
DESIGNED BY: PMC	DRAWN BY: SRB	CHECKED BY: EDF	REVIEWED BY: MDF
PROJECT No: FILB 1501	DATE: 11/15/19	SCALE: AS SHOWN	

CLIENT

**Montebello Realty
GP LLC**

**Braemar at Montebello Assisted
Living Residence**

**Montebello Crossing,
250 Lafayette Avenue
(Route 59)
Village of Montebello
New York**

CONTRACT

STATUS	ISSUE FOR BID
--------	---------------

SHEET TITLE

**FIRE PROTECTION:
SYMBOLS, ABBREVIATIONS
& NOTES**

DRAWING No. **FP0.1**

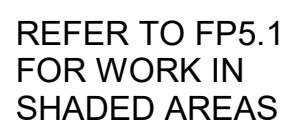
538 Broad Hollow Road, 4th Floor East
Melville, NY 11747
631.756.8000 • www.h2m.com

**22 Mulberry St., Suite 2A,
Middletown, NY 10940
t 845-343-1481 fx 855-320-8735**

MARK	DATE	DESCRIPTION
	01/24/20	FINAL BID / PERMIT
	04/15/22	90% V.E. SUBMISSION
	06/3/22	ISSUE FOR BID

A.8
B

FP2.0A



38 Broad Hollow Road, 4th Floor East
Melville, NY 11747
631.756.8000 • www.h2m.com

www.fellp.com

22 Mulberry St., Suite 2A,
Middletown, NY 10940
t 845-343-1481 fx 855-320-8735

DATE	DESCRIPTION
01/24/20	FINAL BID / PERMIT
04/15/22	90% V.E. SUBMISSION
06/3/22	ISSUE FOR BID

"AL ALTERATION OF THIS DOCUMENT EXCEPT BY A LICENSED PROFESSIONAL IS ILLEGAL."			
DESIGNED BY: PMC	DRAWN BY: SRB	CHECKED BY: EDF	REVIEWED BY: o
PROJECT No: FILB 1501		DATE: 11/15/19	SCALE: AS SHOWN

GP LLC

**Braemar at Montebello Assisted
Living Residence**

**Montebello Crossing,
250 Lafayette Avenue
(Route 59)
Village of Montebello
New York**

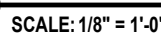
CONTRACT

ISSUE FOR BID

**FIRE PROTECTION
PARTIAL BASEMENT RCP
PLAN - AREA B**

FP2.0B

11/11/2019



H2architects
+
Mengineers

538 Broad Hollow Road, 4th Floor East
Melville, NY 11747
631.756.8000 • www.h2m.com

CONSULTANTS:
FELLENZER III
ENGINEERING LLP
22 Mulberry St., Suite 2A,
Middletown, NY 10940
t 845-343-1481 fx 855-320-8735 Project #: 15-345
www.fellp.com

MARK	DATE	DESCRIPTION
	01/24/20	FINAL BID / PERMIT
	04/15/22	90% V.E. SUBMISSION
	06/3/22	ISSUE FOR BID

A

A.8
B

C

DESIGNED BY: **PMC**

DRAWN BY: **SRB**

CHECKED BY: **EDF**

REVIEWED BY:

PROJECT No: **FILB 1501**

DATE: 11/15/19

SCALE: AS SHOWN

CLIENT
**Montebello Realty
GP LLC**

**Braemar at Montebello Assisted
Living Residence**

**Montebello Crossing,
250 Lafayette Avenue
(Route 59)
Village of Montebello
New York**

CONTRACT

STATUS
ISSUE FOR BID

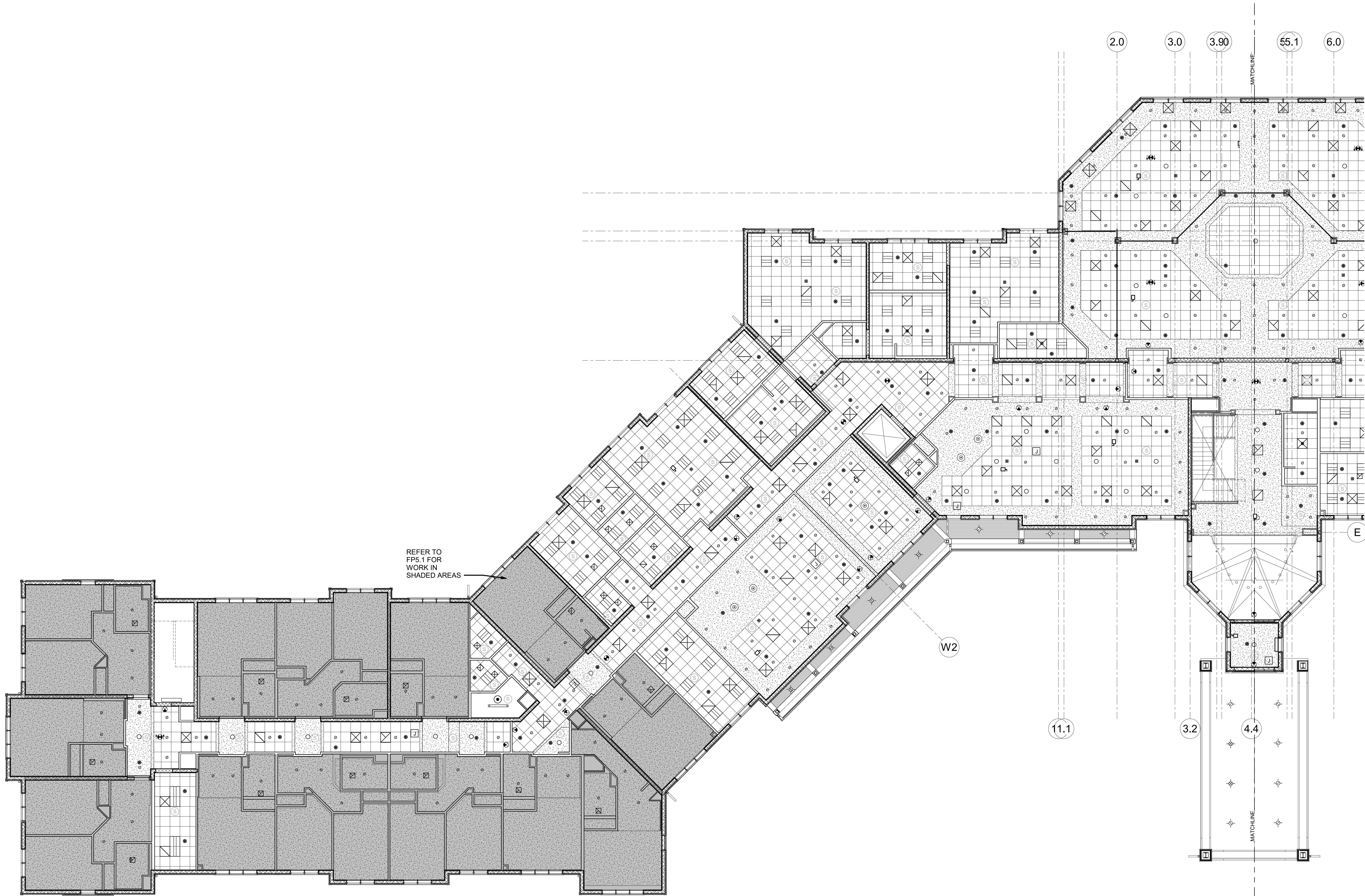
SHEET TITLE
**FIRE PROTECTION
PARTIAL FIRST RCP PLAN
- AREA A**

DRAWING No:
FP2.1A

SHEET No:
OF

C:\Users\jld\Desktop\Realty\Local Plans\15-345A MONTBELLO\17-0208 FILB 1501_Contract\17_A LOCAL FILE 2023\1A.rvt

6/3/2022 1:50:03 PM



1 FIRE PROTECTION FIRST FLOOR RCP PLAN - PART A
SCALE: 1/8" = 1'-0"

38 Broad Hollow Road, 4th Floor East
Melville, NY 11747
631.756.8000 • www.h2m.com

www.fellp.com

**22 Mulberry St., Suite 2A,
Middletown, NY 10940
t 845-343-1481 fx 855-320-8735**

DATE	DESCRIPTION
01/24/20	FINAL BID / PERMIT
04/15/22	90% V.E. SUBMISSION
06/3/22	ISSUE FOR BID

*ALTERATION OF THIS DOCUMENT EXCEPT BY A LICENSED PROFESSIONAL IS ILLEGAL.			
DESIGNED BY: PMC	DRAWN BY: SRB	CHECKED BY: EDF	REVIEWED BY: o
PROJECT NO: FILB 1501	DATE: 11/15/19	SCALE: AS SHOWN	

GP LLC

**Braemar at Montebello Assisted
Living Residence**

**Montebello Crossing,
250 Lafayette Avenue
(Route 59)
Village of Montebello
New York**

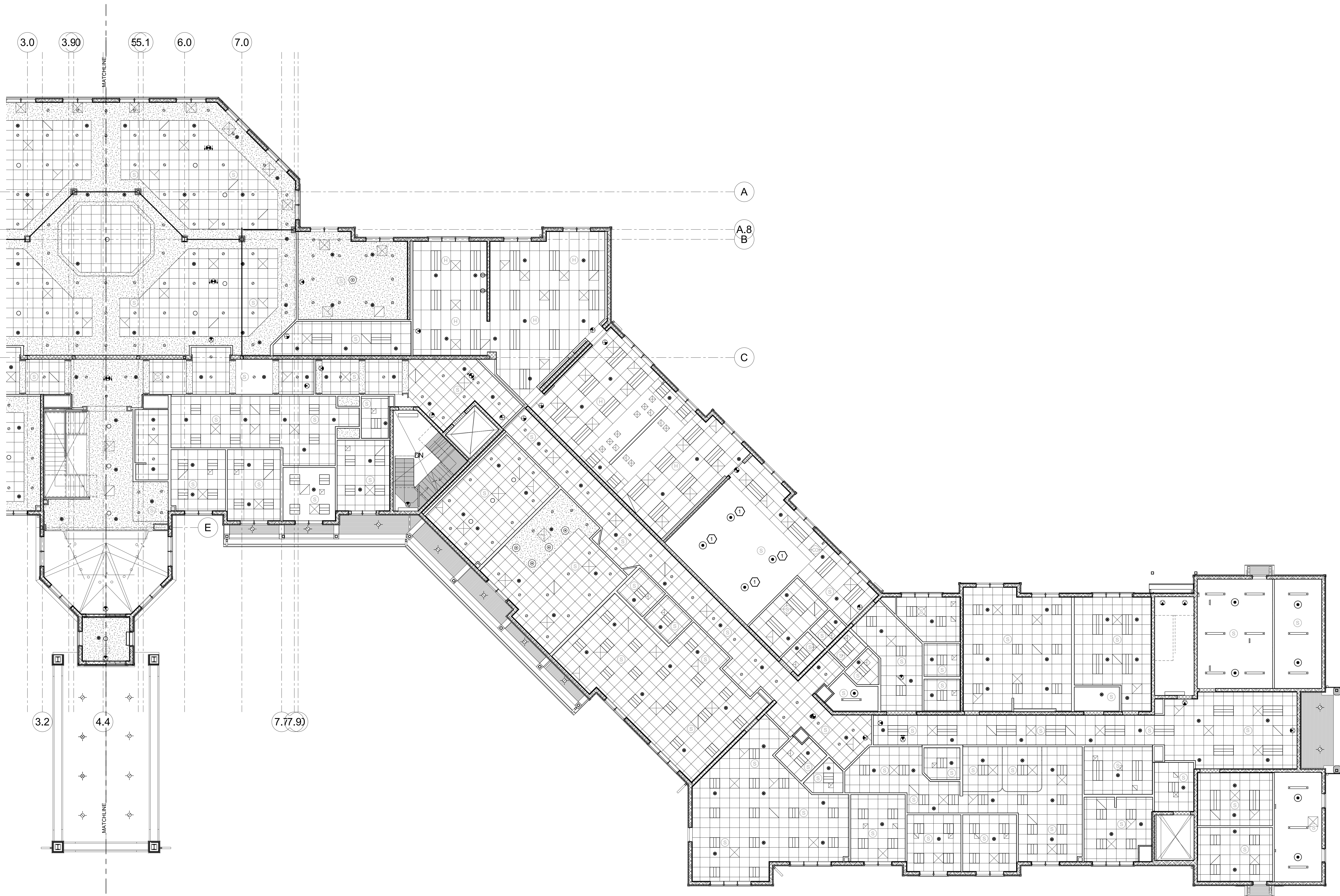
CONTRACT

ISSUE FOR BID

**FIRE PROTECTION
PARTIAL FIRST RCP PLAN
- AREA B**

FP2.1B

HEET No. _____
OF _____



1 FIRE P
SCALE: 1/8" = 1'-0"



KEYED NOTE:

1 SPRINKLERS TO OPERATE ON A DRY PIPE SYSTEM.

538 Broad Hollow Road, 4th Floor East
Melville, NY 11747
631.756.8000 • www.h2m.com

FELLENZER III
ENGINEERING LLP

**22 Mulberry St., Suite 2A,
Middletown, NY 10940
t 845-343-1481 fx 855-320-8735**

[illegible]

ALTERATION OF THIS DOCUMENT EXCEPT BY A LICENSED PROFESSIONAL IS ILLEGAL.			
DESIGNED BY: PMC	DRAWN BY: SRB	CHECKED BY: EDF	REVIEWED BY: o
PROJECT NO: FILB 1501	DATE: 11/15/19	SCALE: AS SHOWN	

**Montebello Realty
GP LLC**

**Braemar at Montebello Assisted
Living Residence**

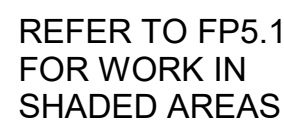
**Montebello Crossing,
250 Lafayette Avenue
(Route 59)
Village of Montebello
New York**

CONTRACT

ISSUE FOR BID

**FIRE PROTECTION
PARTIAL SECOND RCP
PLAN - AREA A**

FP2.2A



1 FIRE PROTECTION SECOND FLOOR RCP PLAN - PART A
SCALE: 1/8" = 1'-0"



[illegible]

ALTERATION OF THIS DOCUMENT EXCEPT BY A LICENSED PROFESSIONAL IS ILLEGAL.			
DESIGNED BY: PMC	DRAWN BY: SRB	CHECKED BY: EDF	REVIEWED BY: o
PROJECT NO: FILB 1501		DATE: 11/15/19	SCALE: AS SHOWN

CLIENT

**Montebello Realty
GP LLC**

**Braemar at Montebello Assisted
Living Residence**

**Montebello Crossing,
250 Lafayette Avenue
(Route 59)
Village of Montebello
New York**

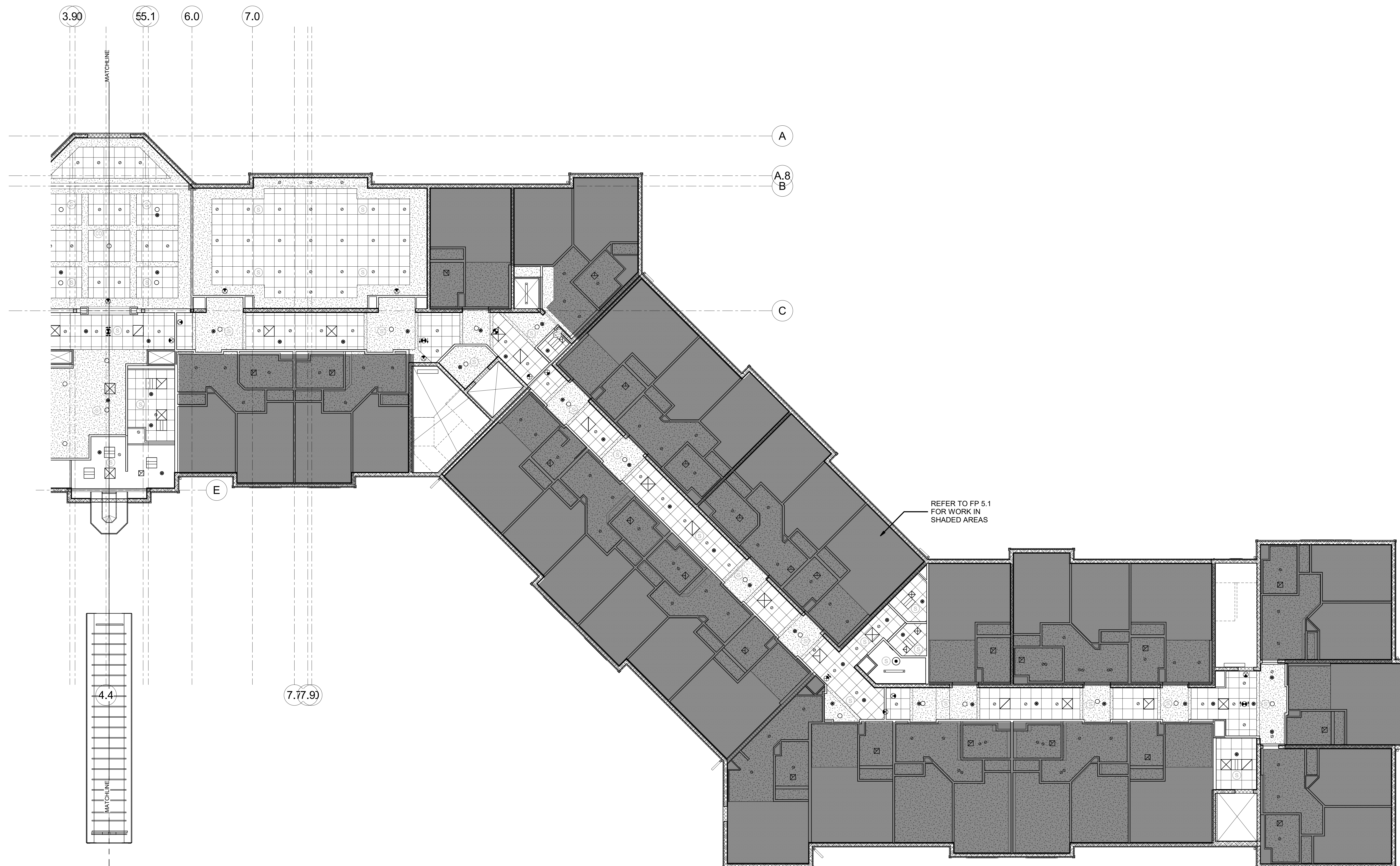
CONTRACT

STATUS	ISSUE FOR BID
--------	---------------

SHEET TITLE

**FIRE PROTECTION
PARTIAL SECOND RCP
PLAN - AREA B**

DRAWING No. **FP2.2B**



1 FIRE PROTECTION SECOND FLOOR RCP PLAN - PART B
SCALE: 1/8" = 1'-0"



[illegible]

<p align="center">*ALTERATION OF THIS DOCUMENT EXCEPT BY A LICENSED PROFESSIONAL IS ILLEGAL*</p>			
DESIGNED BY: PMC	DRAWN BY: SRB	CHECKED BY: EDF	REVIEWED BY: 0
PROJECT No: FILB 1501	DATE: 11/15/19	SCALE: AS SHOWN	

CLIENT

**Montebello Realty
GP LLC**

**Braemar at Montebello Assisted
Living Residence**

**Montebello Crossing,
250 Lafayette Avenue
(Route 59)
Village of Montebello
New York**

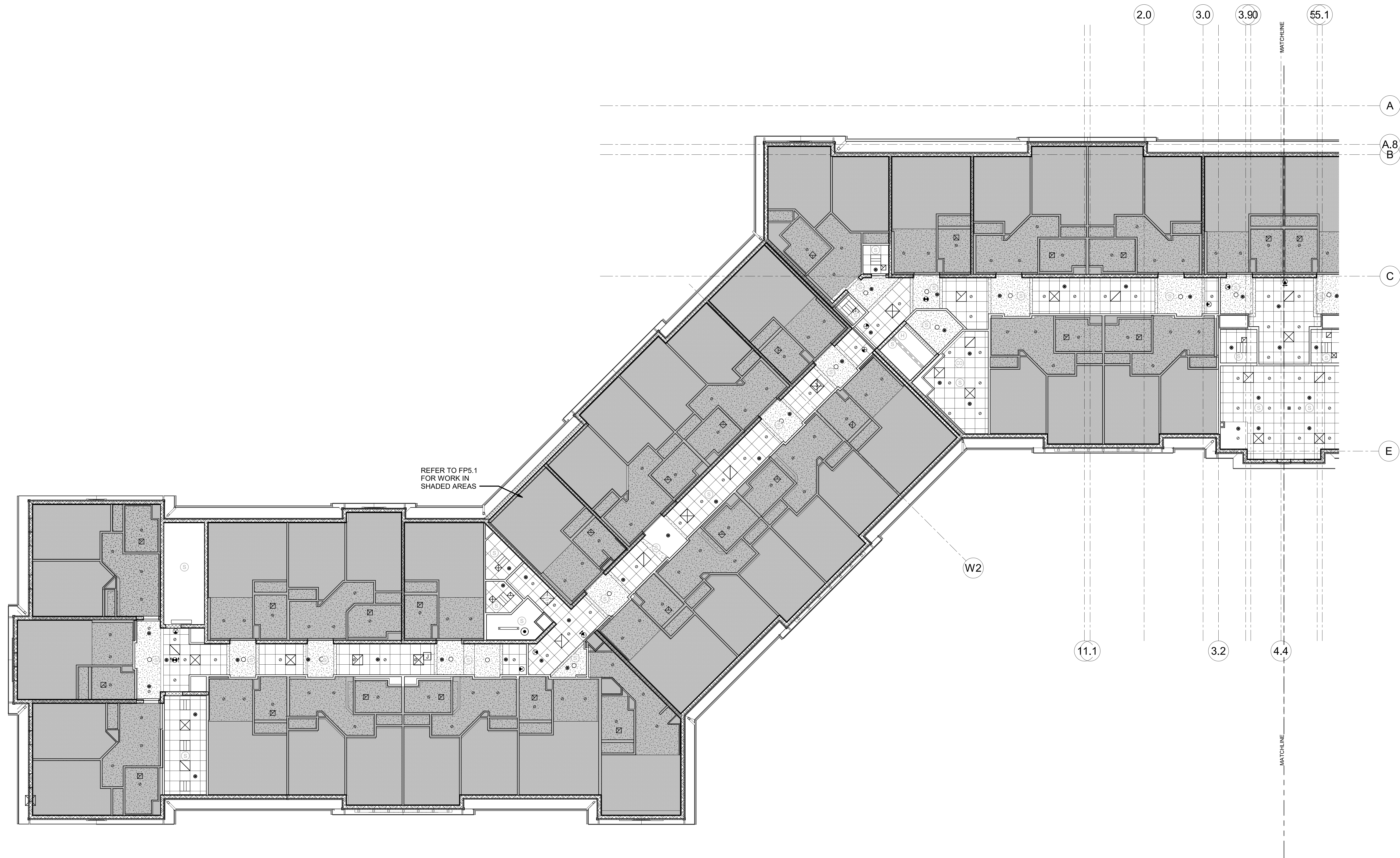
CONTRACT

STATUS	ISSUE FOR BID
--------	---------------

SHEET TITLE

**FIRE PROTECTION
PARTIAL THIRD RCP PLAN
- AREA A**

DRAWING No. **FP2.3A**



1 FIRE PROTECTION THIRD FLOOR RCP PLAN - PART A
SCALE: 1/8" = 1'-0"

38 Broad Hollow Road, 4th Floor East
Melville, NY 11747
631.756.8000 • www.h2m.com

w.fellp.com

22 Mulberry St., Suite 2A,
Middletown, NY 10940
t 845-343-1481 fx 855-320-8735

DATE	DESCRIPTION
01/24/20	FINAL BID / PERMIT
04/15/22	90% V.E. SUBMISSION
06/3/22	ISSUE FOR BID

ALTERATION OF THIS DOCUMENT EXCEPT BY A LICENSED PROFESSIONAL IS ILLEGAL.			
DESIGNED BY: PMC	DRAWN BY: SRB	CHECKED BY: EDF	REVIEWED BY: o
PROJECT NO: FILB 1501	DATE: 11/15/19	SCALE: AS SHOWN	

**Montebello Realty
GP LLC**

**Demar at Montebello Assisted
Living Residence**

**Montebello Crossing,
250 Lafayette Avenue
(Route 59)
Village of Montebello
New York**

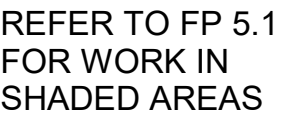
CONTRACT

ISSUE FOR BID

**FIRE PROTECTION
PARTIAL THIRD RCP PLAN
- AREA B**

FP2.3B

6/3/2022 2:01:28 PM



SCALE: 1/8" = 1'-0"



