

CONSULTANTS

FELLENZER III
ENGINEERING LLP

**22 Mulberry St., Suite 2A,
Middletown, NY 10940
t 845-343-1481 fx 855-320-8735**

[illegible]

| | | | |
|--|-------------------------|---------------------------|---------------------------|
| *ALTERATION OF THIS DOCUMENT EXCEPT BY A LICENSED PROFESSIONAL IS ILLEGAL.* | | | |
| DESIGNED BY: PMC | DRAWN BY: SRB | CHECKED BY: EDF | REVIEWED BY: o |
| PROJECT NO: FILB 1501 | | DATE: 11/15/19 | SCALE: AS SHOWN |

CLIENT

**Montebello Realty
GP LLC**

**Braemar at Montebello Assisted
Living Residence**

**Montebello Crossing,
250 Lafayette Avenue
(Route 59)
Village of Montebello
New York**

CONTRACT

| | |
|--------|------------------|
| STATUS | FOR CONSTRUCTION |
|--------|------------------|

SHEET TITLE

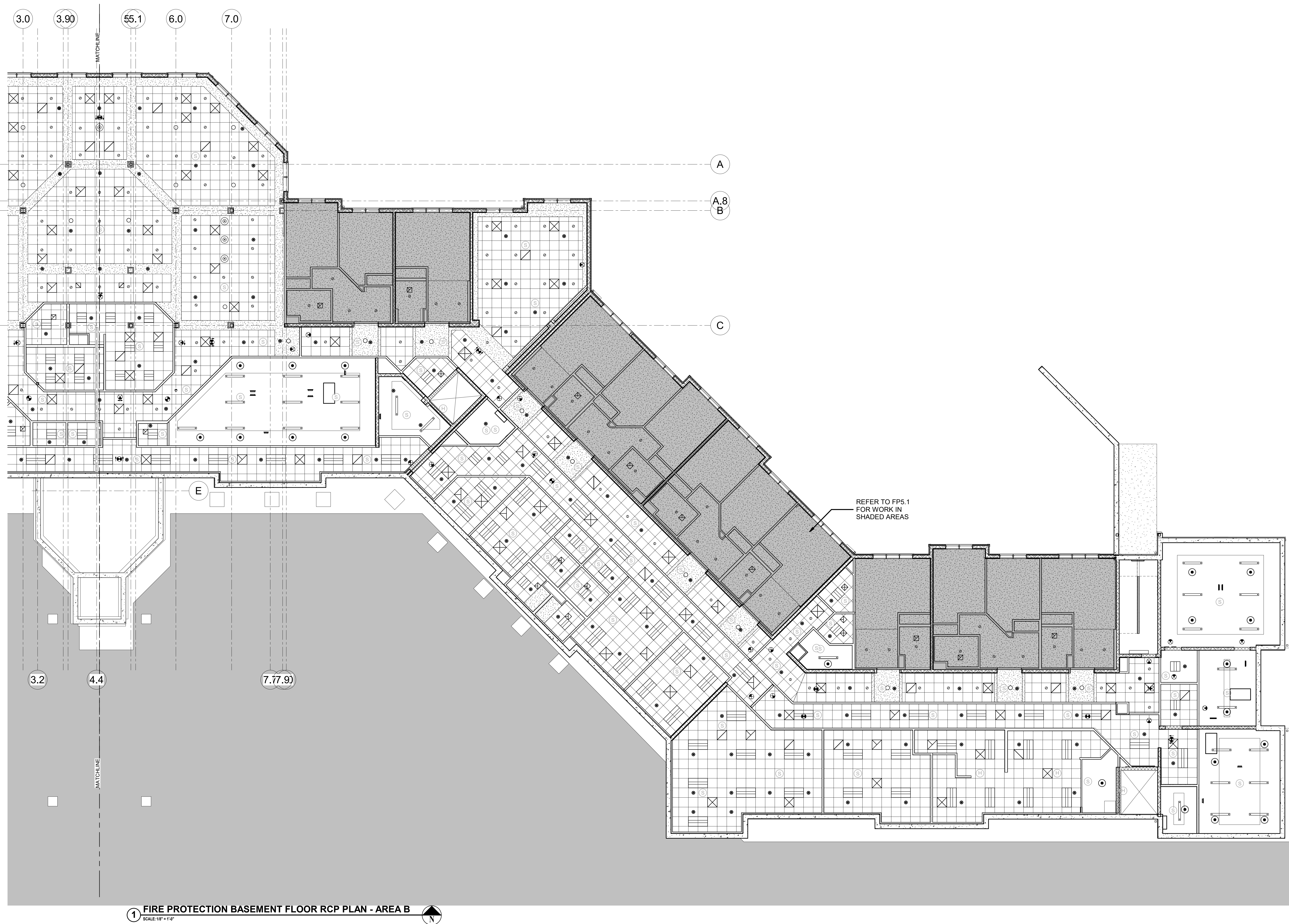
**FIRE PROTECTION
PARTIAL BASEMENT RCP
PLAN - AREA B**

DRAWING No.

FP2.0B

SHEET No.

OF



38 Broad Hollow Road, 4th Floor East
Melville, NY 11747
631.756.8000 • www.h2m.com

www.fellp.com

Case #: 15-345

| | |
|----------|-------------------------|
| 01/24/20 | FINAL BID / PERMIT |
| 04/15/22 | 90% V.E. SUBMISSION |
| 06/03/22 | ISSUE FOR BID |
| 07/22/22 | ADDENDUM #1 |
| 08/08/22 | ISSUED FOR CONSTRUCTION |

A.8)

С

| | | |
|-----|-------------|-------|
| BY: | CHECKED BY: | DATE: |
|-----|-------------|-------|

| | | |
|---------------------------------|-------------------|--------------------|
| PROJECT No: FILB 1501 | DATE: 11/15/19 | SCALE: AS SHOWN |
|---------------------------------|-------------------|--------------------|

**Montebello Realty
GP LLC**

Maricar at Montebello Assisted Living Residence

**Montebello Crossing,
250 Lafayette Avenue
(Route 59)
Village of Montebello
New York**

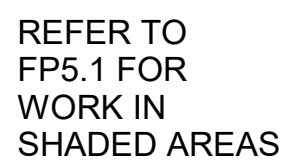
| |
|----------|
| CONTRACT |
|----------|

FOR CONSTRUCTION

**FIRE PROTECTION
PARTIAL FIRST RCP PLAN
- AREA A**

P2.1A

8/8/2022 9:11:48 AM



| | | | |
|--|-------------------------|---------------------------|---------------------------|
| *ALTERATION OF THIS DOCUMENT EXCEPT BY A LICENSED PROFESSIONAL IS ILLEGAL.* | | | |
| DESIGNED BY: PMC | DRAWN BY: SRB | CHECKED BY: EDF | REVIEWED BY: o |
| PROJECT NO: FILB 1501 | | DATE: 11/15/19 | SCALE: AS SHOWN |

**Braemar at Montebello Assisted
Living Residence**

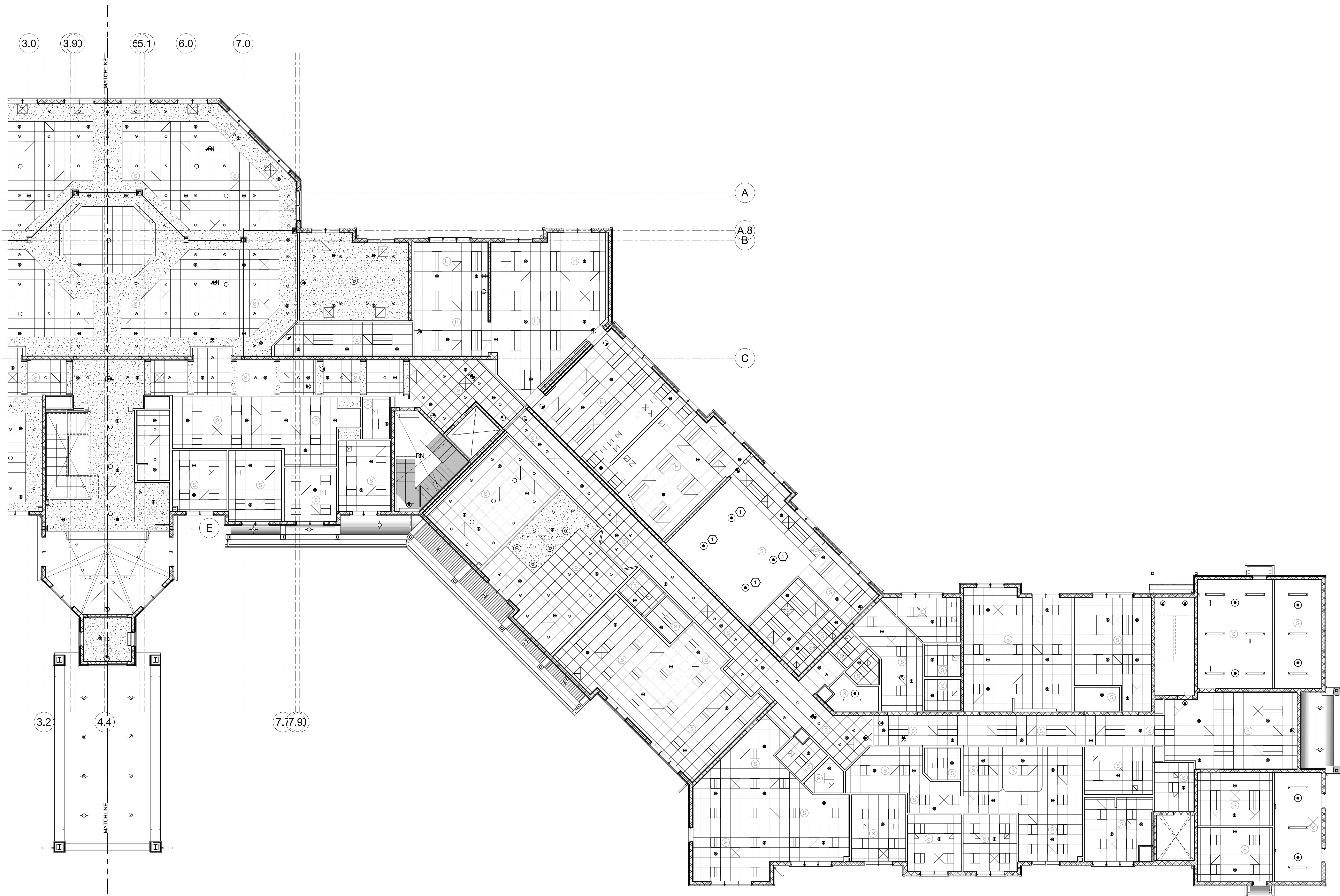
**Montebello Crossing,
250 Lafayette Avenue
(Route 59)
Village of Montebello
New York**

STATUS **FOR CONSTRUCTION**

SHEET TITLE

**FIRE PROTECTION
PARTIAL FIRST RCP PLAN
- AREA B**

| | |
|---|--|
| DRAWING No. <div style="font-size: 2em; font-weight: bold; text-align: center;">FP2.1B</div> | SHEET No. <div style="text-align: center;">OF</div> |
|---|--|



1 FIRE PROTECTION FIRST FLOOR RCP PLAN - PART B
SCALE: 1/8" = 1'-0"

KEYED NOTE:

① SPRINKLERS TO OPERATE ON A DRY PIPE SYSTEM.



1 FIRE PROTECTION SECOND FLOOR RCP PLAN - PART A
SCALE: 1/8" = 1'-0"

38 Broad Hollow Road, 4th Floor East
Melville, NY 11747
631.756.8000 • www.h2m.com

www.fellp.com

ect #: 15-345

| DATE | DESCRIPTION |
|----------|-------------------------|
| 01/24/20 | FINAL BID / PERMIT |
| 04/15/22 | 90% V.E. SUBMISSION |
| 06/03/22 | ISSUE FOR BID |
| 07/22/22 | ADDENDUM #1 |
| 08/08/22 | ISSUED FOR CONSTRUCTION |

| | | | |
|---------------------------------|--------------------------|---------------------------|--------------------------|
| DESIGNED BY: PMC | DRAWN BY: SRB | CHECKED BY: EDF | REVIEWED BY: o |
| PROJECT No: FILB 1501 | DATE: 11/15/19 | SCALE: AS SHOWN | |

GP LLC

Living Residence

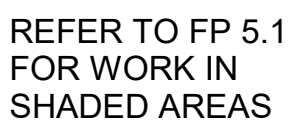
City of Montebello
New York

FOR CONSTRUCTION

E PROTECTION
IAL SECOND RCI
LAN - AREA B

2B

SHEET No. _____
OF _____



SCALE: 1/8" = 1'-0"



38 Broad Hollow Road, 4th Floor East
Melville, NY 11747
631.756.8000 • www.h2m.com

www.fellp.com

ject #: 15-34

| DATE | DESCRIPTION |
|----------|-------------------------|
| 01/24/20 | FINAL BID / PERMIT |
| 04/15/22 | 90% V.E. SUBMISSION |
| 06/03/22 | ISSUE FOR BID |
| 07/22/22 | ADDENDUM #1 |
| 08/08/22 | ISSUED FOR CONSTRUCTION |

| | | | |
|---------------------------------|--------------------------|---------------------------|--------------------------|
| DESIGNED BY: PMC | DRAWN BY: SRB | CHECKED BY: EDF | REVIEWED BY: o |
| PROJECT No: FILB 1501 | DATE: 11/15/19 | SCALE: AS SHOWN | |

**Montebello Realty
GP LLC**

Remar at Montebello Assisted Living Residence

Montebello Crossing,
Lafayette Avenue
(Route 59)
Village of Montebello
New York

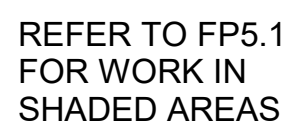
CONTRACT

FOR CONSTRUCTION

**FIRE PROTECTION
PARTIAL THIRD RCP PLAN
- AREA A**

FP2.3A

2



SCALE: 1/8" = 1'-0"



1 FIRE PROTECTION THIRD FLOOR RCP PLAN - PART B
SCALE: 1/8" = 1'-0"

