

[illegible]

<small>TO: DIRECTOR OF THE ARMY CORP OF ENGINEERS 3150 MIAMI AVENUE WASHINGTON, D.C. 20315</small>			
DESIGNED BY: PMC	DRAWN BY: SRB	CHECKED BY: EDF	REVIEWED BY:
PROJECT No: FILE 1501	DATE: 11/15/19	SCALE: AS SHOWN	

**Montebello Realty
GP LLC**

**Braemar at Montebello Assisted
Living Residence**

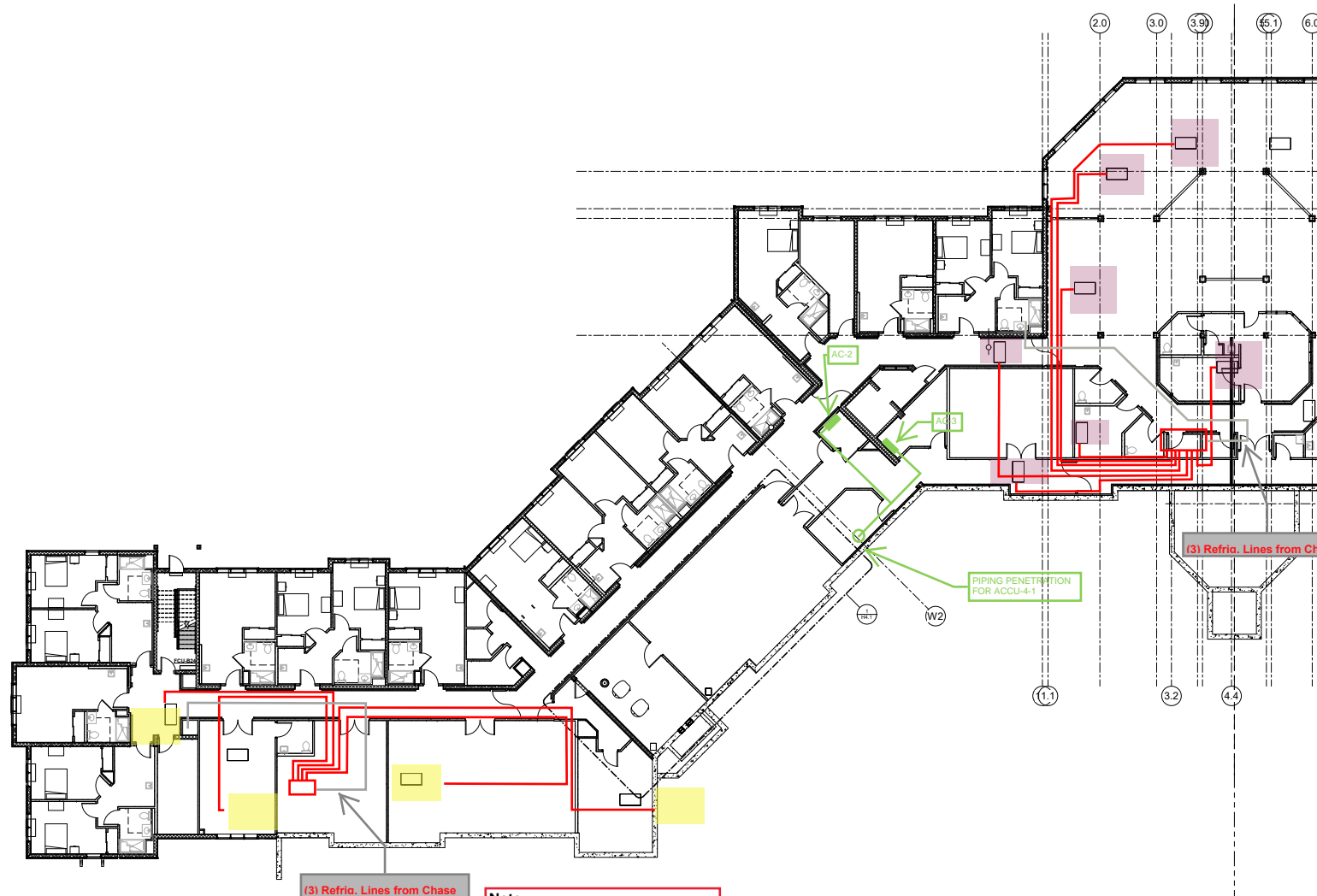
Montebello Crossing,
250 Lafayette Avenue
(Route 59)
Village of Montebello
New York

CONTRACT

STATUS	ISSUE FOR BID
--------	---------------

**HVAC PARTIAL
BASEMENT FLOOR
HYDRONIC PIPING PLAN -
AREA A**

DRAWING No. **SKH1.0A**



1 HVAC BASEMENT FLOOR HYDRONIC PIPING PLAN - PART A
SCALE: 1/8" = 1'-0"

Note:
MECHANICAL CONTRACTOR TO
COORDINATE AND CONFIRM PIPING
LENGTHS WITH MANUFACTURER'S
REPRESENTATIVE (KILMA, NY) PRIOR
TO INSTALLATION.



FELLENZER 
ENGINEERING LLP

22 Mulberry St., Suite 2A,
Middletown, NY 10940

t 845-343-1481 fx 855-320-8735 Project #: 15-345

www.fellip.com

[illegible]

<small>TO: DIRECTOR OF THE ARMY CORP OF ENGINEERS 3150 MIAMI AVENUE WASHINGTON, D.C. 20315</small>			
DESIGNED BY: PMC	DRAWN BY: SRB	CHECKED BY: EDF	REVIEWED BY:
PROJECT No: FILE 1501	DATE: 11/15/19	SCALE: AS SHOWN	

**Montebello Realty
GP LLC**

**Braemar at Montebello Assisted
Living Residence**

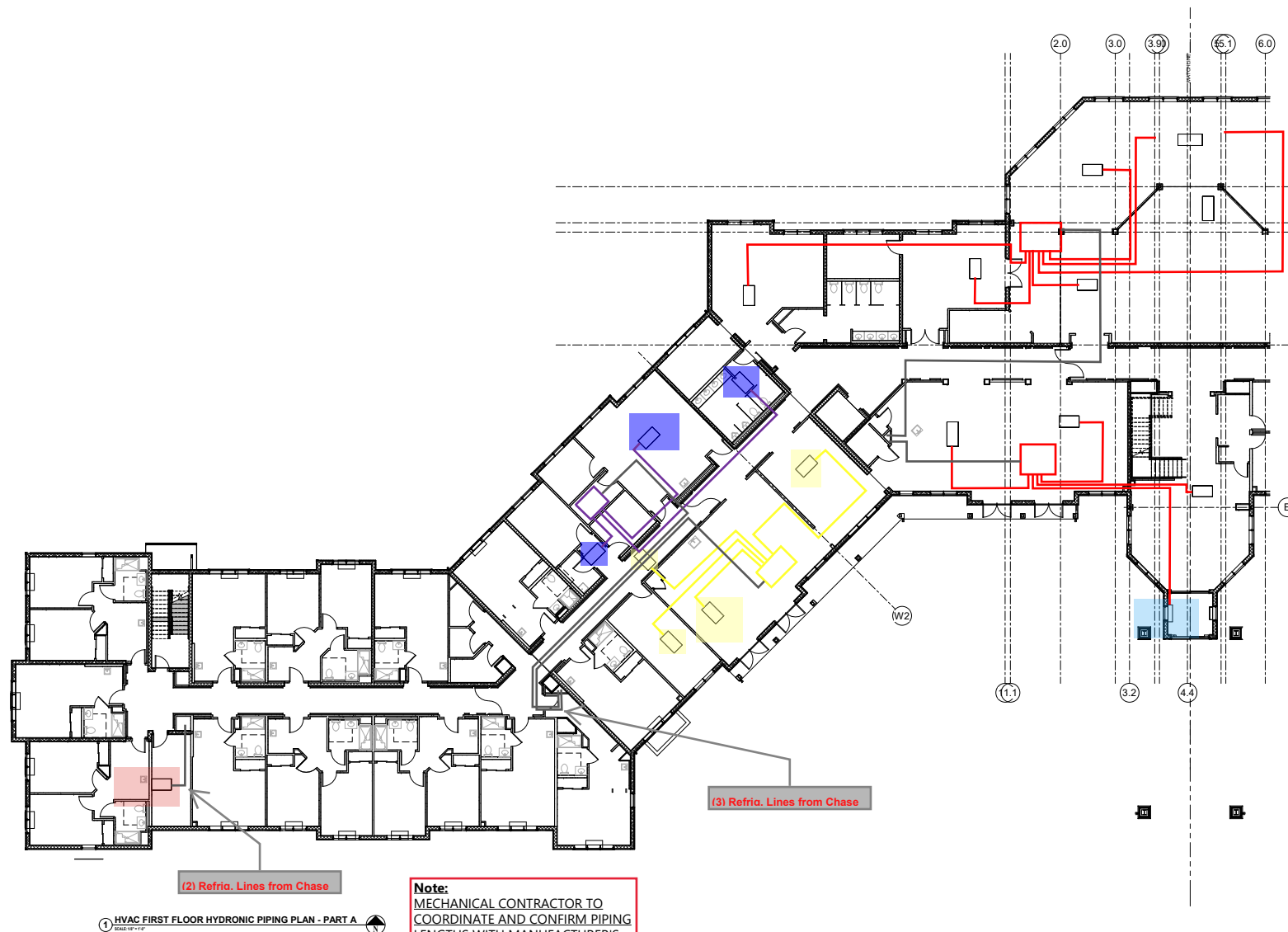
Montebello Crossing,
250 Lafayette Avenue
(Route 59)
Village of Montebello
New York

CONTRACT

STATUS	ISSUE FOR BID
--------	---------------

**HVAC PARTIAL FIRST
FLOOR HYDRONIC PIPING
PLAN - AREA A**

DRAWING No. **SKH1.1A**



Note:
MECHANICAL CONTRACTOR TO
COORDINATE AND CONFIRM PIPING
LENGTHS WITH MANUFACTURER'S
REPRESENTATIVE (KILMA, NY) PRIOR
TO INSTALLATION.

1 HVAC FIRST FLOOR HYDRONIC PIPING PLAN - PART A
SCALE: 1/8" = 1'-0"

--	--	--	--	--



CONSULTANTS
FELLENZER ■
ENGINEERING LLP

22 Mulberry St., Suite 2A,
Middletown, NY 10940
t 845-343-1481 fx 855-320-8735

[illegible]

DESIGNED BY: PMC	DRAWN BY: SRB	CHECKED BY: EDF	REVIEWED BY: "
PROJECT No: FILB 1501		DATE: 11/15/19	SCALE: AS SHOWN

**Montebello Realty
GP LLC**

**Braemar at Montebello Assisted
Living Residence**

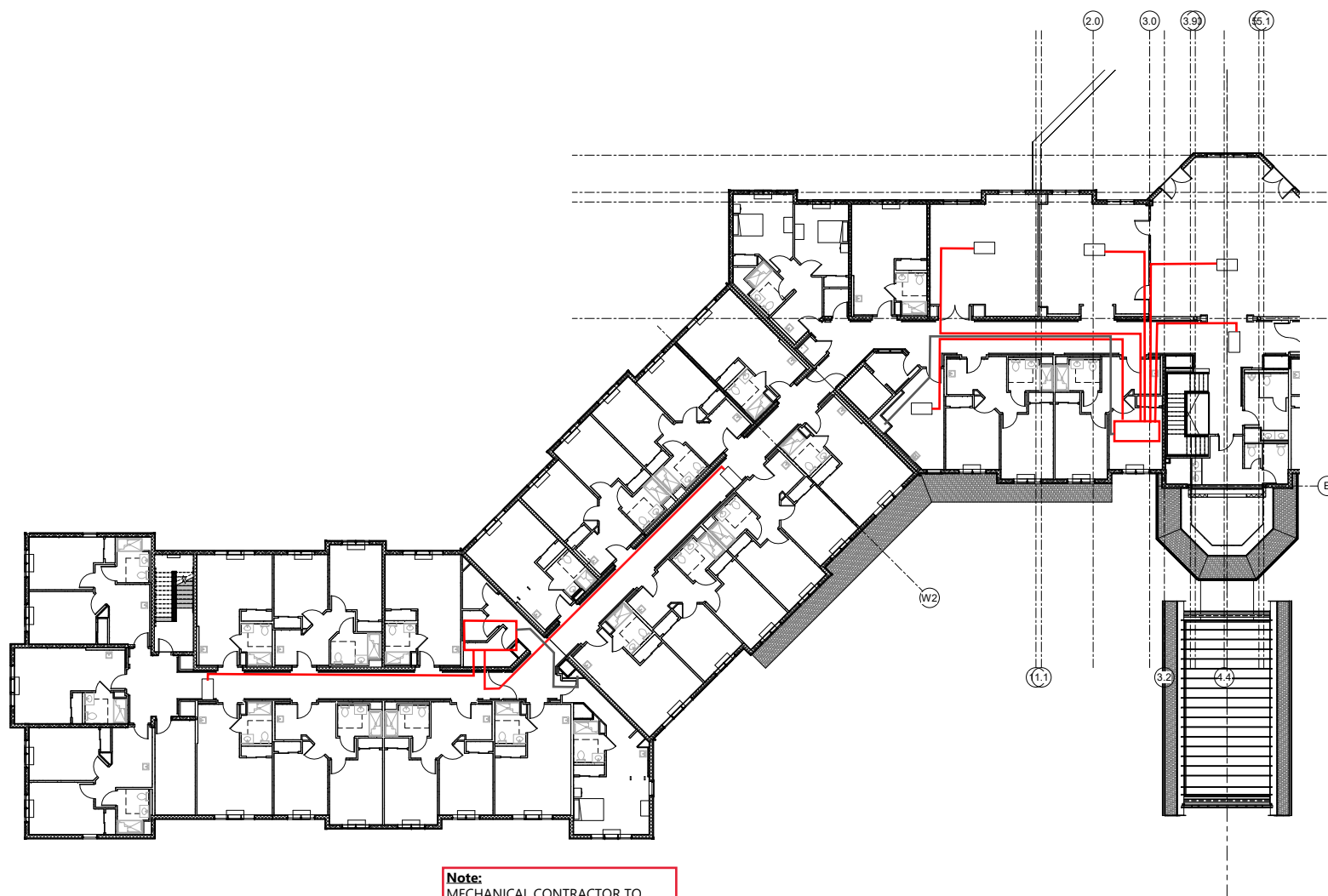
Montebello Crossing,
250 Lafayette Avenue
(Route 59)
Village of Montebello
New York

CONTRACT

STATUS	ISSUE FOR BID
--------	---------------

**HVAC PARTIAL SECOND
FLOOR HYDRONIC PIPING
PLAN - AREA A**

DRAWING No. **SKH1.2A**



1 HVAC SECOND FLOOR HYDRONIC PIPING PLAN - PART A
SCALE: 1/8" = 1'-0"

Note:
MECHANICAL CONTRACTOR TO
COORDINATE AND CONFIRM PIPING
LENGTHS WITH MANUFACTURER'S
REPRESENTATIVE (KILMA, NY) PRIOR
TO INSTALLATION.

--	--	--

431



FELLENZER 
ENGINEERING LLP

22 Mulberry St., Suite 2A,
Middletown, NY 10940

t 845-343-1481 fx 855-320-8735

www.felip.com

Project #: 15-345

[illegible]

<small> "A PORTION OF THIS DOCUMENT IS UNCLASSIFIED DATE 05/05/2010 BY 60322/UC/LP/STP </small>			
DESIGNED BY: PMC	DRAWN BY: SRB	CHECKED BY: EDF	REVIEWED BY:
PROJECT No: FILE 1501	DATE: 11/15/10	SCALE: AS SHOWN	

**Montebello Realty
GP LLC**

**Braemar at Montebello Assisted
Living Residence**

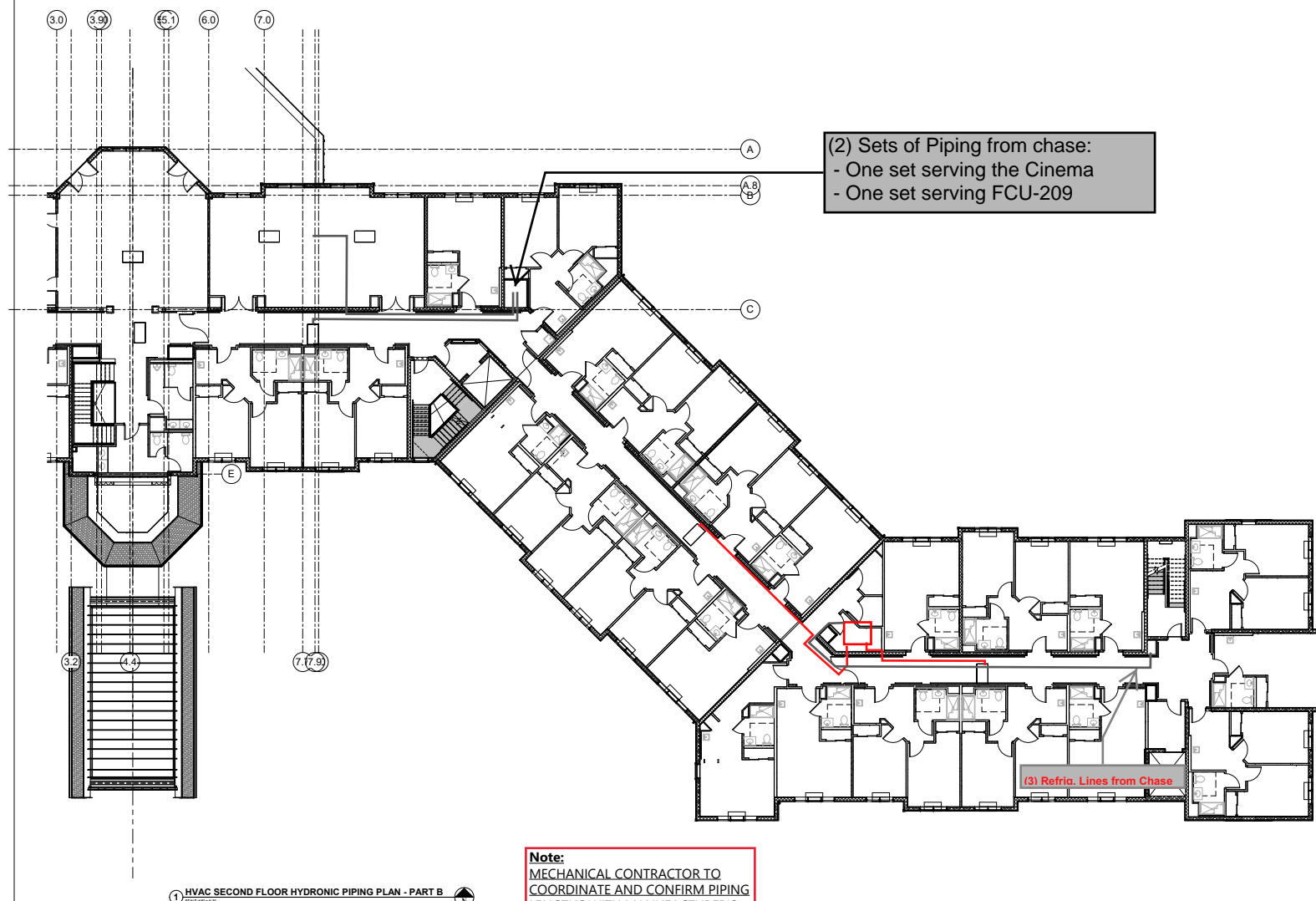
Montebello Crossing,
250 Lafayette Avenue
(Route 59)
Village of Montebello
New York

CONTRACT

STATUS	ISSUE FOR BID
--------	---------------

**HVAC PARTIAL SECOND
FLOOR HYDRONIC PIPING
PLAN - AREA B**

SKH1.2B



Note:
MECHANICAL CONTRACTOR TO
COORDINATE AND CONFIRM PIPING
LENGTHS WITH MANUFACTURER'S
REPRESENTATIVE (KILMA, NY) PRIOR
TO INSTALLATION.

--	--	--

471



22 Mulberry St., Suite 2A,
Middletown, NY 10940
t 845-343-1481 fx 855-320-8735

[illegible]

"IN TESTING OF THIS DOCUMENT SUBJECT OF A LIFE SIZE PHOTOGRAPH OF A SUBJECT"			
DESIGNED BY: PMC	DRAWN BY: SRB	CHECKED BY: EDF	REVIEWED BY:
PROJECT No: FILB 1501	DATE: 11/15/19	SCALE: AS SHOWN	

**Montebello Realty
GP LLC**

**Braemar at Montebello Assisted
Living Residence**

Montebello Crossing,
250 Lafayette Avenue
(Route 59)
Village of Montebello
New York

CONTRACT	
----------	--

STATUS	ISSUE FOR BID
--------	---------------

**HVAC PARTIAL THIRD
FLOOR HYDRONIC PIPING
PLAN - AREA A**

DRAWING No. **SKH1.3A**



Note:
MECHANICAL CONTRACTOR TO
COORDINATE AND CONFIRM PIPING
LENGTHS WITH MANUFACTURER'S
REPRESENTATIVE (KILMA, NY) PRIOR
TO INSTALLATION.

1 HVAC THIRD FLOOR HYDRONIC PIPING PLAN - PART A
SCALE: 1/8" = 1'-0"

7/20/2022 11:40:37 AM C:\Users\jef\OneDrive\LOCAL FILES\115-3458 MONTHLY BUDGET-0000.FLH150_ (NEW) LOCAL FILE 2021.FLH



22 Mulberry St., Suite 2A,
Middletown, NY 10940
t 845-343-1481 fx 855-320-8735

[illegible]

<small>THIS DOCUMENT IS THE PROPERTY OF A USER AND IS NOT TO BE REPRODUCED OR TRANSMITTED IN ANY FORM OR BY ANY MEANS, ELECTRONIC OR MECHANICAL, INCLUDING PHOTOCOPYING, RECORDING, OR BY ANY INFORMATION STORAGE AND RETRIEVAL SYSTEM.</small>			
DESIGNED BY: Designer	DRAWN BY: SRB	CHECKED BY: EDF	REVIEWED BY:
PROJECT No: FILE 1501	DATE: 11/15/19	SCALE: AS SHOWN	

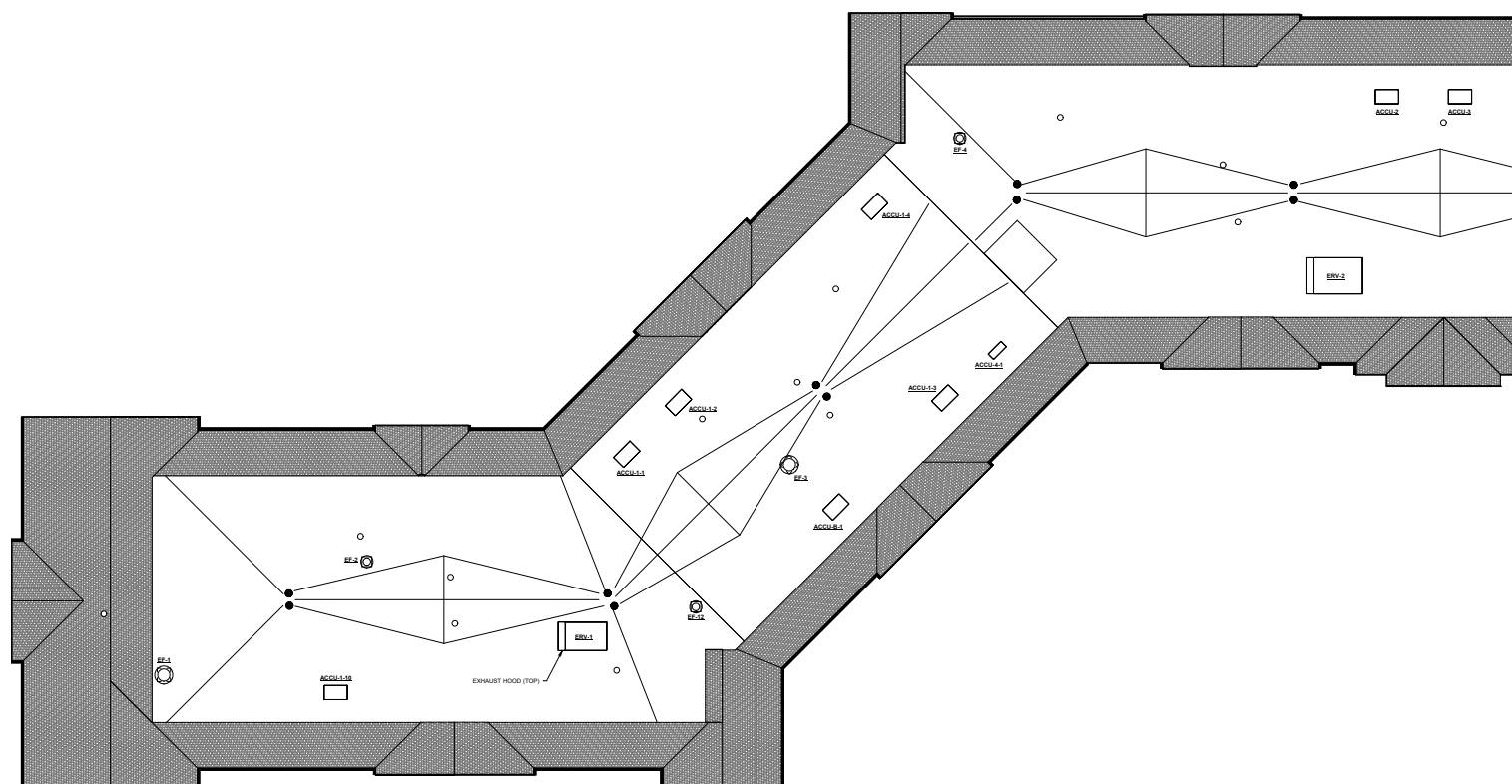
**Braemar at Montebello Assisted
Living Residence**

Montebello Crossing,
250 Lafayette Avenue
(Route 59)
Village of Montebello
New York

STATUS	ISSUE FOR BID
--------	---------------

**HVAC PARTIAL ROOF
HYDRONIC PIPING PLAN -
AREA A**

DRAWING No. **SKH1.4A**



1 HVAC ROOF PLAN - HYDRONIC PIPING PLAN - PART A

Note:
MECHANICAL CONTRACTOR TO
COORDINATE AND CONFIRM PIPING
LENGTHS WITH MANUFACTURER'S
REPRESENTATIVE (KILMA, NY) PRIOR
TO INSTALLATION.



22 Mulberry St., Suite 2A,
Middletown, NY 10940
t 845-343-1481 fx 855-320-8735

[illegible]

<small>THIS DOCUMENT IS THE PROPERTY OF A USER AND IS NOT TO BE REPRODUCED OR TRANSMITTED IN ANY FORM OR BY ANY MEANS, ELECTRONIC OR MECHANICAL, INCLUDING PHOTOCOPYING, RECORDING, OR BY ANY INFORMATION STORAGE AND RETRIEVAL SYSTEM.</small>			
DESIGNED BY: Designer	DRAWN BY: SRB	CHECKED BY: EDF	REVIEWED BY:
PROJECT No: FILE 1501	DATE: 11/15/19	SCALE: AS SHOWN	

**Montebello Realty
GP LLC**

**Braemar at Montebello Assisted
Living Residence**

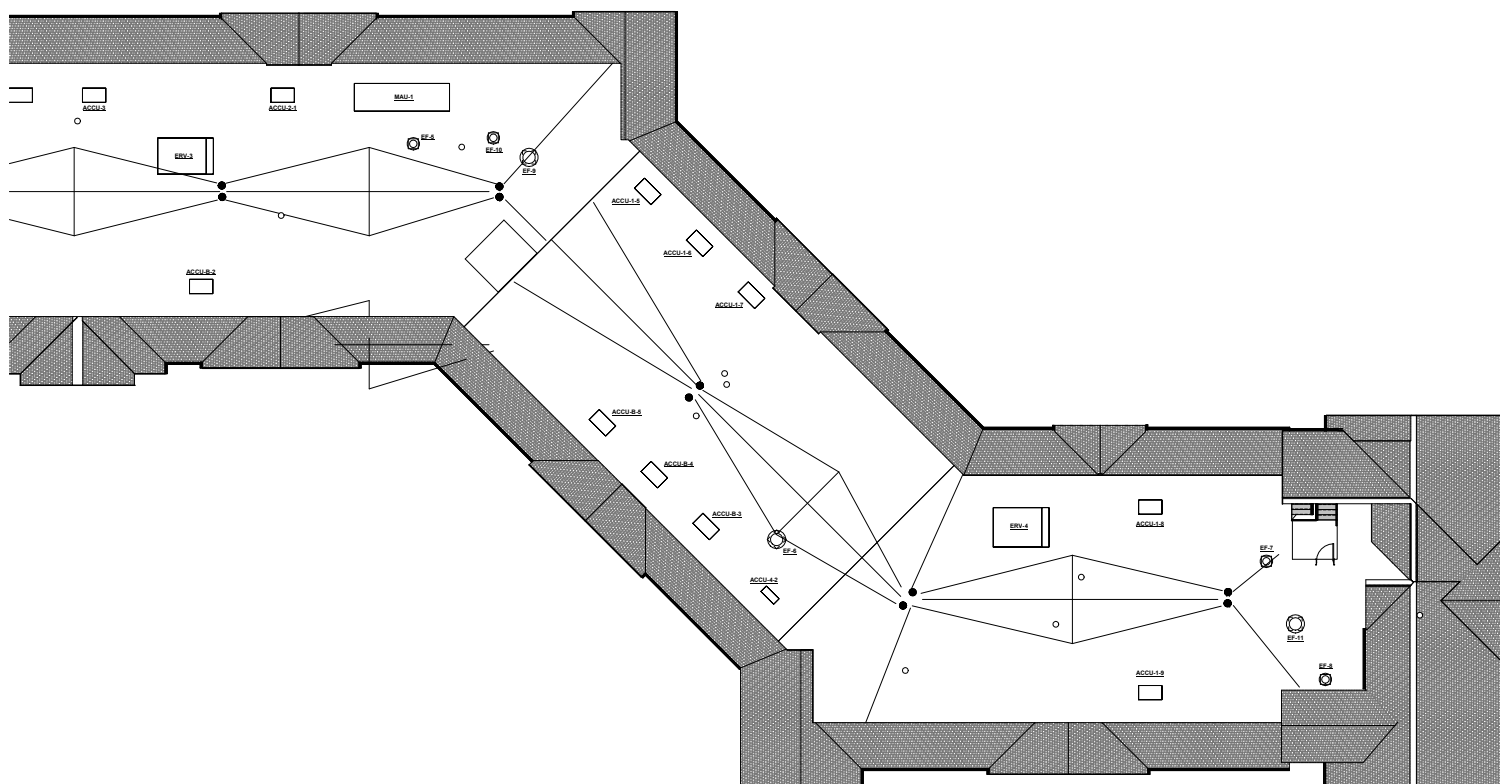
Montebello Crossing,
250 Lafayette Avenue
(Route 59)
Village of Montebello
New York

CONTRACT

STATUS	ISSUE FOR BID
<p> 1 2 3 4 5 6 7 8 9 10 11 12 13 14 15 16 17 18 19 20 21 22 23 24 25 26 27 28 29 30 31 32 33 34 35 36 37 38 39 40 41 42 43 44 45 46 47 48 49 50 51 52 53 54 55 56 57 58 59 60 61 62 63 64 65 66 67 68 69 70 71 72 73 74 75 76 77 78 79 80 81 82 83 84 85 86 87 88 89 90 91 92 93 94 95 96 97 98 99 100 </p>	<p> 1 2 3 4 5 6 7 8 9 10 11 12 13 14 15 16 17 18 19 20 21 22 23 24 25 26 27 28 29 30 31 32 33 34 35 36 37 38 39 40 41 42 43 44 45 46 47 48 49 50 51 52 53 54 55 56 57 58 59 60 61 62 63 64 65 66 67 68 69 70 71 72 73 74 75 76 77 78 79 80 81 82 83 84 85 86 87 88 89 90 91 92 93 94 95 96 97 98 99 100 </p>

**HVAC PARTIAL ROOF
HYDRONIC PIPING PLAN -
AREA B**

SKH1.4B



1 HVAC ROOF PLAN - HYDRONIC PIPING PLAN - PART B
SCALE: 1/8" = 1'-0"

Note:
MECHANICAL CONTRACTOR TO
COORDINATE AND CONFIRM PIPING
LENGTHS WITH MANUFACTURER'S
REPRESENTATIVE (KILMA, NY) PRIOR
TO INSTALLATION.

[illegible]

1001