

GSGNY Bid Addendum Two (2)

Date: 8 July 2022

Project Name: Girl Scouts of Greater New York (GSGNY)

Project Number: 2005

Note that this is the final Bid Addendum and there will be no further RFI responses for the remainder of the bid period. Bids are due by COB 15 July 2022.

You are directed to note the following Clarifications and Changes in the Bid Documents:

A. DESIGN REVISIONS/UPDATES

I. DRAWINGS

- A-101 First Floor Construction Plan
 - Wall type clarification at stair – wall type 2
- A-360 Enlarged Details
 - Clarification of precast post base size
 - Clarification of precast sills at exterior doors
- A-371 Fireplace Details
 - Clarification that insulation at fireplace is to be mineral wool type
 - Clarification of chimney height
- A-900 Door Schedule
 - Revision to door type D2 to HM with vision lite
 - Clarification of aluminum storefront door type (see below for spec clarification)
 - Clarification to Door SF3 as thicker 2.25: Insulpour door (see below for spec clarification)
- A-901 Window Schedule
 - Added L-7 louver on north side
 - Clarification to glazing key (see below for spec clarification)

II. SPECIFICATIONS AND OTHER CLARIFICATIONS

1. At Porticos, all decorative wood beams and brackets spanning from the wood posts to exterior wall shall be 6"x 6" solid cedar and all posts are 8"x 8" solid cedar – to coordinate with structural design
2. **Exterior Glazing:** In order to meet the Performance Criteria required by the Energy Analysis, all glazing in the exterior storefront and exterior aluminum doors, identified as GL-2 on A-900 and A-901, shall be as follows. This Specification supersedes all other descriptions in the Drawings or Specifications. The outdoor lite shall be ¼" clear tempered glass with a Solarban 60 coating on the #2 surface. The ½" airspace shall be filled a 95% argon and 5% air mix. The Indoor lite shall be ¼" clear tempered glass with an Energy Select 73 coating on the #4 surface. The performance ratings are as follows: U = 0.20, SHGC = 0.37 and VTL = 66%.
3. **Exterior Hollow Metal Doors:** In order to meet the Performance Criteria required by the Energy Analysis, the exterior hollow metal doors (#115C, #115D, #116B, #120, #121 and #201) shall be Allegion Steelcraft Hollow Metal Series L18 with a Polyurethane Core. The performance rating is U = 0.36.
4. Door #101/ Aluminum Storefront Entrance SF-3: due to the height of the doors, the Specification for this opening only shall be changed from the Kawneer 500 Standard Entrance Door to the Kawneer 2 ¼" Series 500T Insulpour Entrance Door.
5. In Specification Section 08 12 55- Interior Aluminum Frames, paragraph 2.5 C, on Page 08 12 55-3, the finish for the interior aluminum doors and frames shall be changed from a "clear anodized finish" to a painted Fluoropolymer Two-Coat System complying with AAMA 605.2, similar to the finish for the exterior aluminum products.

B. REQUESTS FOR INFORMATION (RFI)

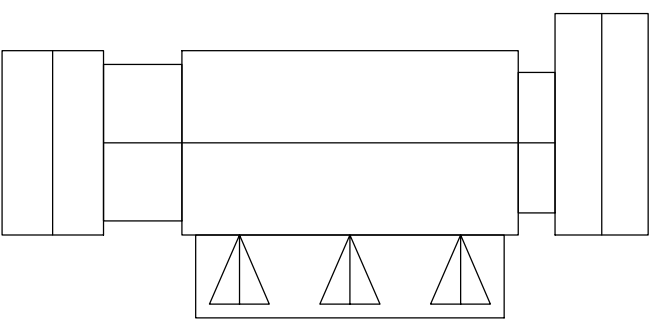
(RFI responses 1-9 previously communicated via email on 7/7/2022)

1. **Question:** Please provide project anticipated construction budget.
Answer: We will review your proposal before disclosing the owner's budget
2. **Question:** Is site available for pre-bid inspection?
Answer: The site is available for pre-inspection. Please contact Steve Gomez, the property manager for Girl Scouts, at sgomez@girlscoutsnyc.org
3. **Question:** C-300 & L300 Discrepancy. Please confirm top of wall and bottom of wall elevations for boulder wall.
Answer: See elevations on L-300

4. **Question:** C-300 Gravel turnaround. Please confirm this is existing gravel area. If new, please provide section.
Answer: See L-200 – asphalt area is new, gravel area (shown in white) is existing
5. **Question:** C-302. Please confirm proposed emergency generator is by owner / others.
Answer: The emergency generator is by others, NIC
6. **Question:** C-302. & C-904. How are pumps being powered to pump pit?
Answer: The pup is powered off the adjacent residence in normal mode and by the emergency generator in power outages
7. **Question:** C-500. Please confirm denotation CF is for typical orange construction fence and provide detail.
Answer: See detail 8/L-501
8. **Question:** C-902. Provide section for underdrain only (not combined underdrain and main).
Answer: Where underdrain is only is required, detail is similar except provide minimum 6" gravel on sides and bottom of single pipe
9. **Question:** C-903, concrete monument detail. Please specify if monuments are to be installed for both primary and future expansion areas within this contract.
Answer: Provide monuments at corners of each primary area
10. **Question:** S-002 Slab on Grade - Note 2:
Please confirm 3 pounds of Macro Synthetic Fibers per cubic yard. Normally it would be 3 pounds per cubic yard foot.
Answer: The dosage for the macro-synthetic fiber is 3 lbs per cubic yard.
11. **Question:** C-302. & C-904. How are pumps being powered to pump pit?
Answer: The pump is powered off the adjacent residence in normal mode and by the emergency generator in power outages.
12. **Question:** Is power from adjacent residence to pump pit part of this contract or NIC? If so, please provide detail.
Answer: See "Pump Pit Electrical Note" on sheet SU-1.
13. **Question:** C-500. Please confirm denotation CF is for typical orange construction fence and provide detail.
Answer: See detail 8/L-501.
14. **Question:** C-500 & L-100 Discrepancy. Please indicate Correct delineation of detail 8/L-501.
Answer: Use delineation shown on L-100 for bid

End of GSGNY Addendum Two (2)


KEY PLAN



N.T.S.

NOTE

- STEEL STAIRS SHALL BE ENGINEERED AND CONSTRUCTED FROM THE FOLLOWING:
 - TREADS: 11"x 42" DIAMOND STEEL PLATE TREADS (WELDED TO STEEL STRINGER) WITH SCREWED DOWN NON-SLIP NOSING.
 - RISERS: CLOSED RISERS SHALL BE 1" MAX. AND CONSTRUCTED FROM DIAMOND PLATE WELDED TO STEEL STRINGER. STRINGER: STRINGER SHALL BE "C" CHANNEL.
 - HANDRAIL: HANDRAIL SHALL BE 1 1/2" DIA. STEEL TUBE HANDRAIL (BOTH SIDES OF STAIR) BOLTED TO WALL.
 - FINISH: PRIMED WITH RUST INHIBITOR AND PAINTED.
 - FLOOR TO FLOOR HEIGHT IS 10'-0".
- CONTRACTOR SHALL FIELD VERIFY ALL DIM. PRIOR TO FABRICATION.
- ALL EXPOSED WOOD AT EXTERIOR INCLUDING POSTS, BEAMS, TRIMS, RAFTERS, AND ROOF DECK AT PORTICO # 4 2 SHALL BE RED CEDAR (STAINED), UNLESS STATED OTHERWISE.

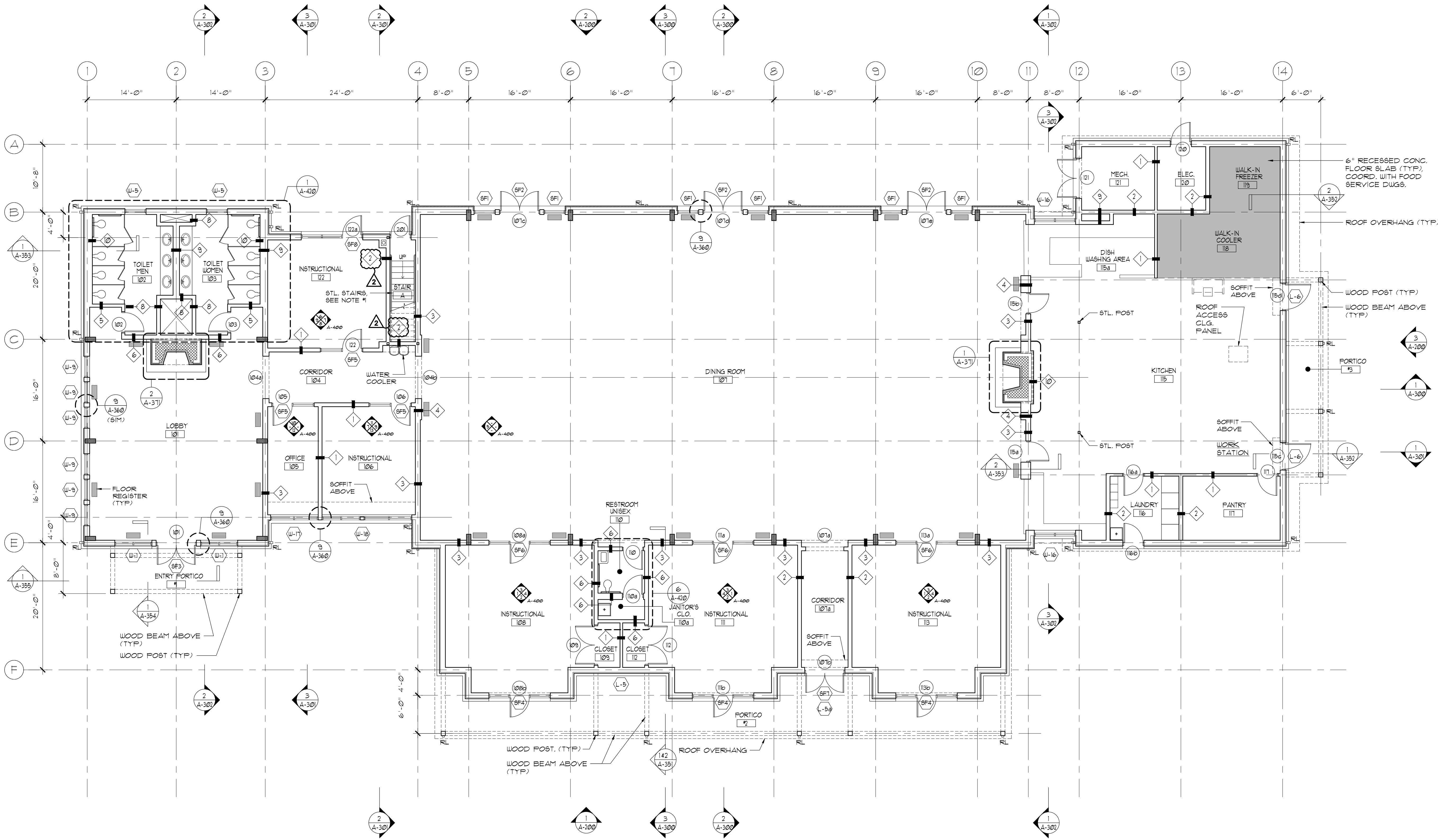
	07/08/2022	ADDENDUM #2
	07/01/2022	ADDENDUM #1
	06/24/2022	ISSUED FOR BID
No.	Date	Revision
<div><div>STRUCTURAL ENGINEER D.R. Pilla Consulting Engineers 143 Main Street Nyack, NY 10960 PH (845) 727-7793</div><div>FOR REFERENCE ONLY CIVIL ENGINEER Insite Engineering, Surveying & Landscape Architecture, P.C. 3 Garrett Place Carmel, NY 10512 PH (845) 225-9690</div><div>M.E.P. ENGINEER Tietjen Venegas Consulting Engineers 68 Purchase Street Rye, NY 10580 PH (914) 967-9505</div></div>		

Architect
PETER GISOLFI ASSOCIATES
Architects · Landscape Architects, LLP
566 Warburton Avenue, Hastings-on-Hudson, NY 10706
Phone: (914) 478-3677 · Fax: (914) 478-1600

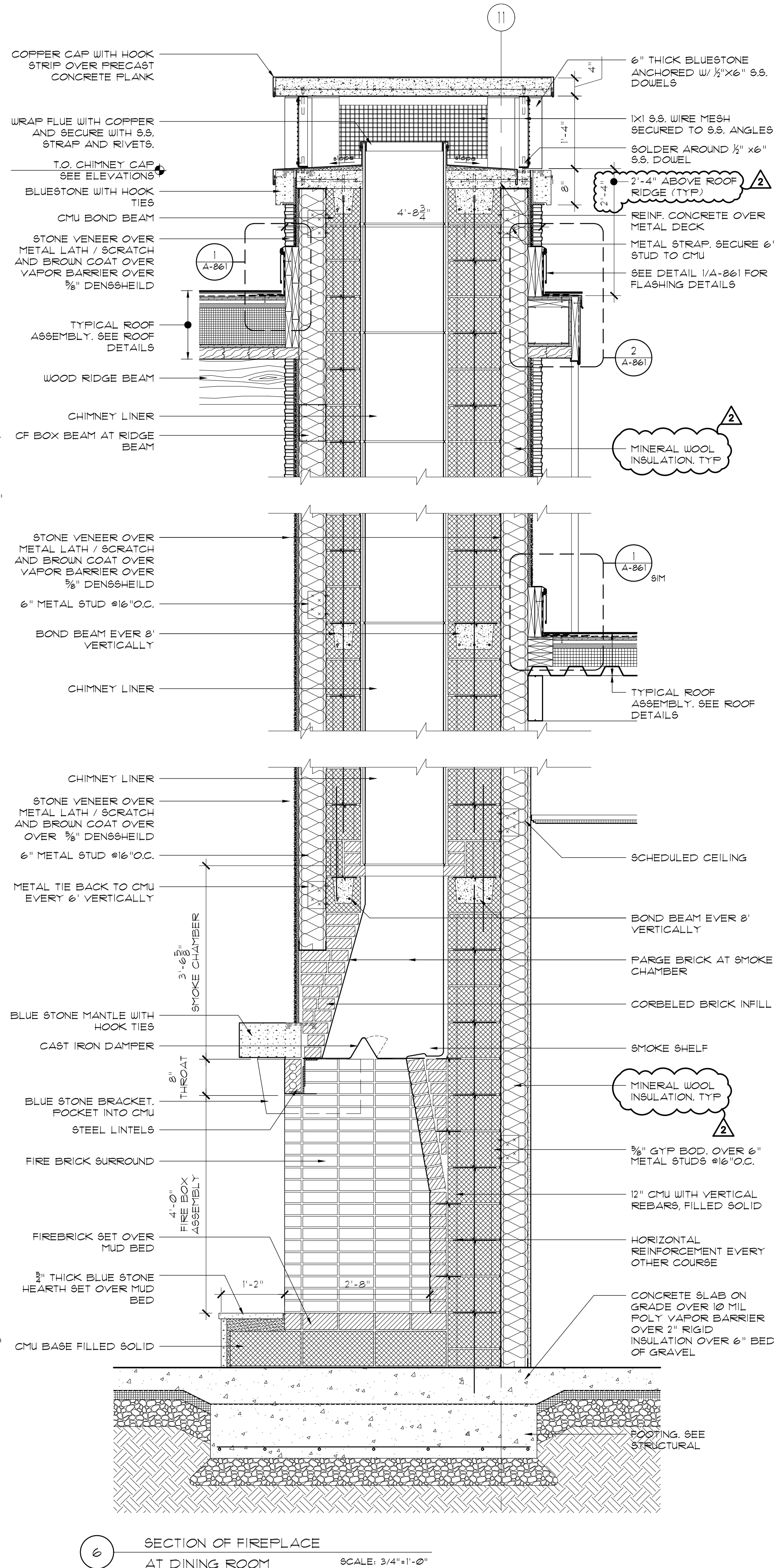
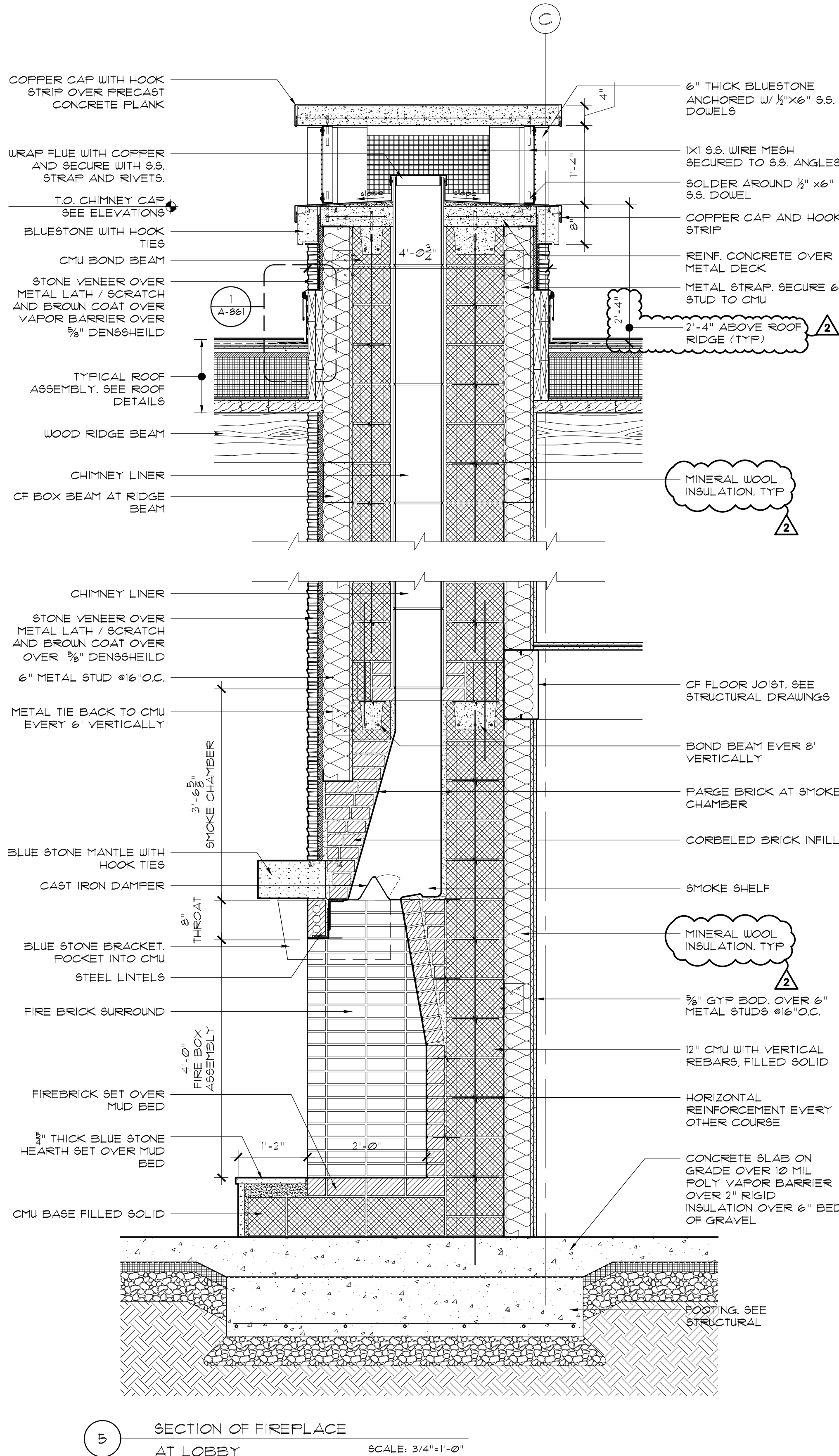
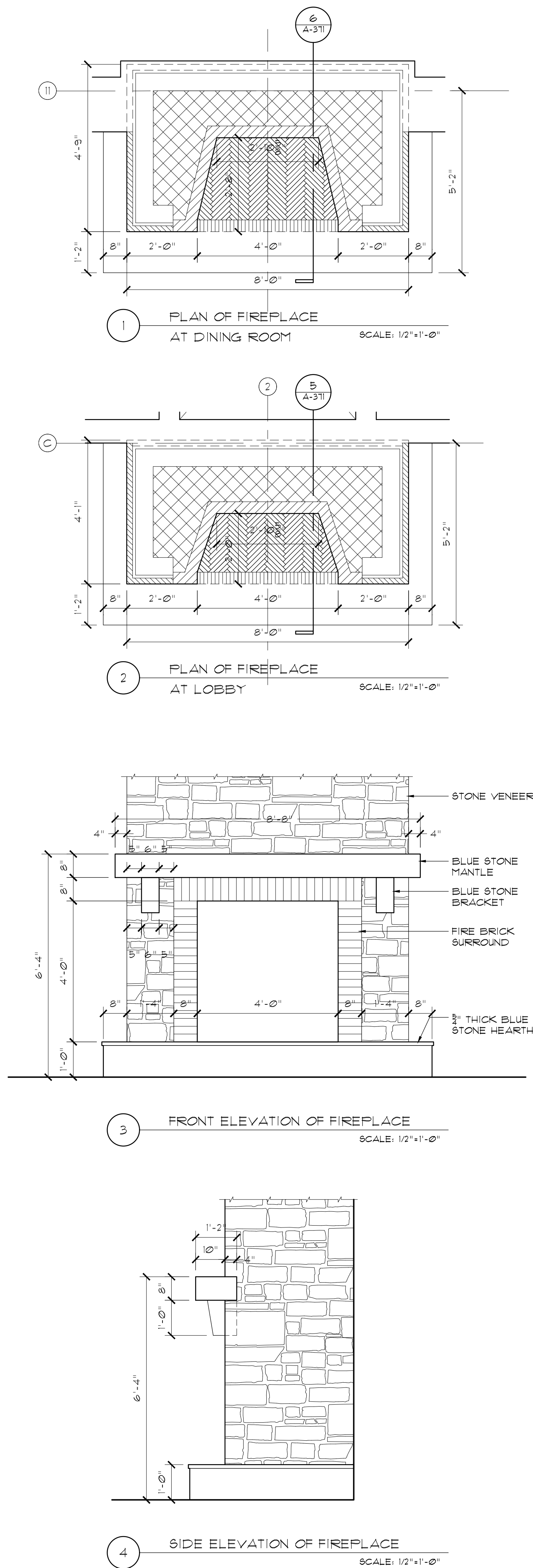
Project Title
CAMP KAUFMANN
GIRL SCOUTS OF
GREATER NEW YORK
81 CAMP ROAD
HOLMES, NY 12531

Drawing Title
FIRST FLOOR
CONSTRUCTION PLAN

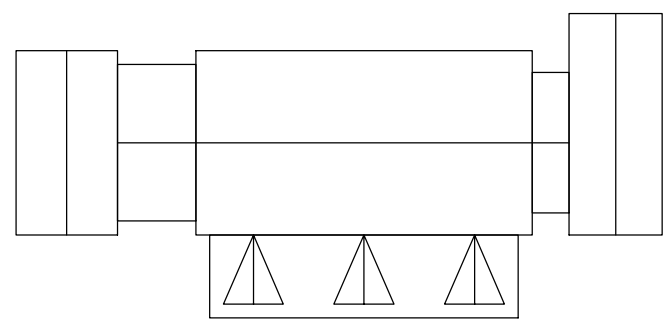
Seal & Signature	Date:	06/21/2021
	PROJECT No:	2005
	DRAWN BY:	CS, RW, MK
	CHK BY:	NL
	DWG No:	A-101
CADD FILE No:		-
W:\2005 Girl Scouts of Greater NY		




1 FIRST FLOOR CONSTRUCTION PLAN
SCALE: 1/8"=1'-0"



KEY PLAN



N.T.S.

	07/08/2022	ADDENDUM #2
	07/01/2022	ADDENDUM #1
I.	06/24/2022	ISSUED FOR BID
No.	Date	Revision
STRUCTURAL ENGINEER D.R. Pilla Consulting Engineers 143 Main Street Nyack, NY 10960 PH (845) 727-7793		
FOR REFERENCE ONLY CIVIL ENGINEER Dino Engineering, Surveying & Landscape Architecture, P.C. 3 Garrett Place Carmel, NY 10512 PH (845) 225-9600		
M.E.P. ENGINEER Tustin Veregna Consulting Engineers 68 Purchase Street, Rye, NY 10580 PH (914) 967-9505		

Architect
PETER GISOLFI ASSOCIATES
Architects · Landscape Architects, LLP
566 Warburton Avenue, Hastings-on-Hudson, NY 10706
Phone: (914) 478-3677 · Fax: (914) 478-1600

Project Title
**CAMP KAUFMANN
GIRL SCOUTS OF
GREATER NEW YORK**
81 CAMP ROAD
HOLMES, NY 12531

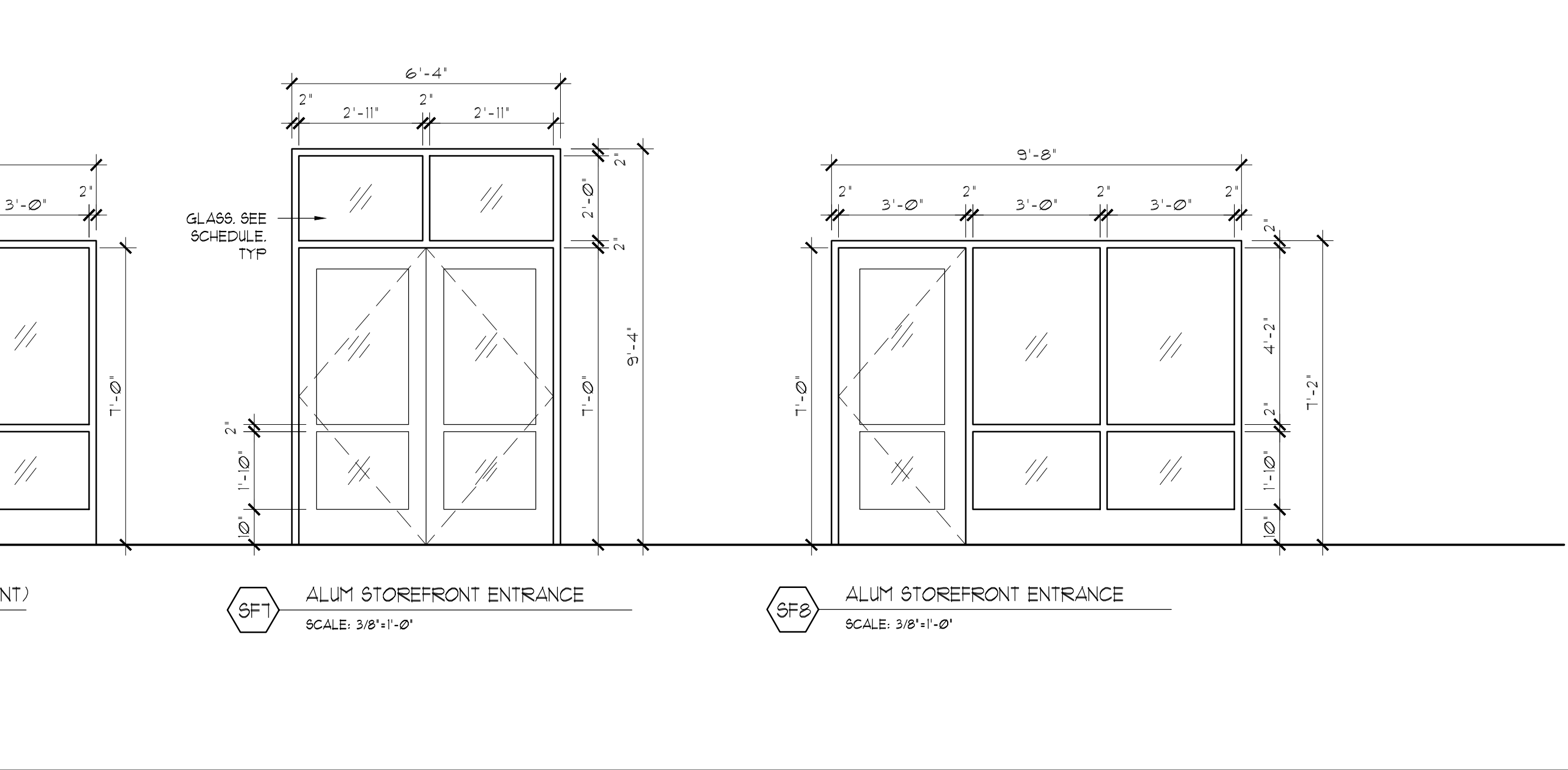
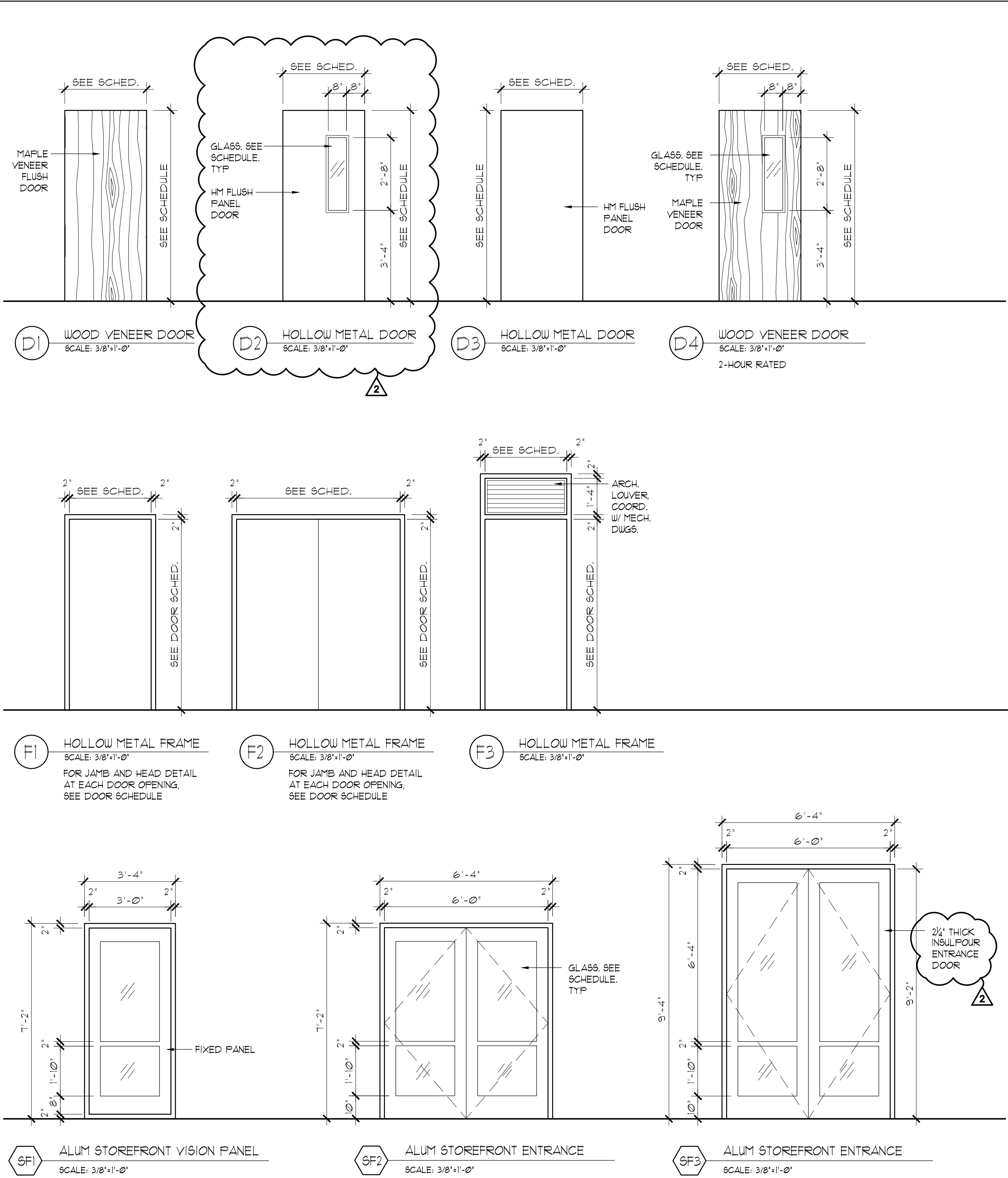
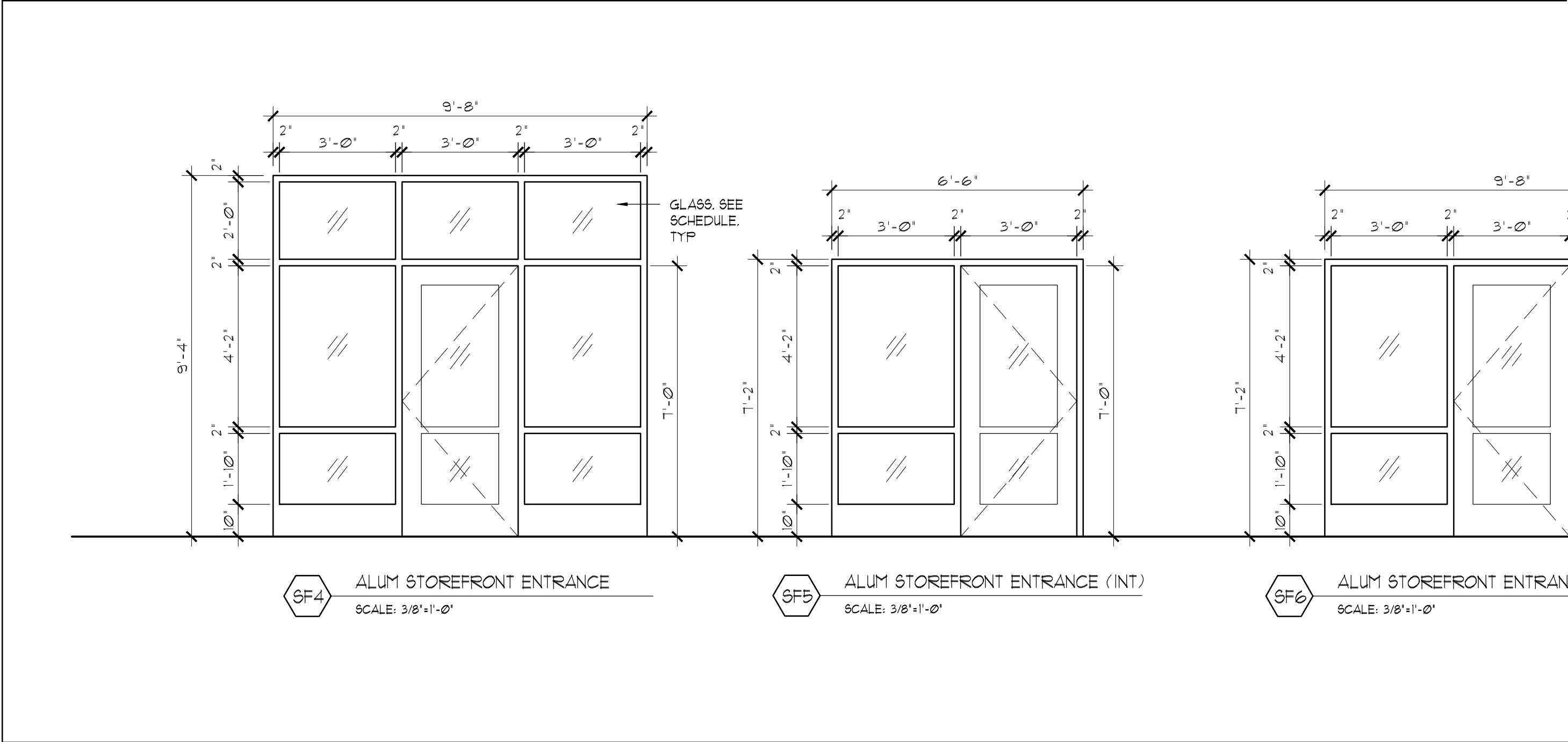
Drawing Title

FIREPLACE DETAILS

Seal & Signature	Date:	06/21/2021
	PROJECT No:	2005
	DRAWN BY:	CS, RW, MK
	CHK BY:	NL
	DWG No:	A-371
CADD FILE No:		
W:2005 Girl Scouts of Greater NY		

DOOR SCHEDULE														
FLR	DR#	RM#	RM. NAME	INT/EXT	DESCRIPTION	DOOR SIZE (WxHxT)	DR TYPE	LABEL	FRAME TYPE	FRAME ELEV.	GLAZING	SADDLE/THRESHLD	HARD-WARE SET	REMARKS
FIRST FLOOR	101	101	LOBBY	EXT.	ALUM. ENTRANCE	(1 PR.) 3'-0"x 9'-2" x 2-1/4"	SF3	-	ALUM.	SF3	GL-2		06	KAUKEER 5000 INSULFOUR ENTRANCE DOOR
	102	102	MEN'S TOILET	INT.	WOOD VENEER	3'-0"x 7'-0"x 1-3/4"	D1	-	HM	F1	-		02	
	103	103	WOMEN'S TOILET	INT.	WOOD VENEER	3'-0"x 7'-0"x 1-3/4"	D1	-	HM	F1	-		02	
	104a	104	CORRIDOR	INT.	-	6'-8"x 7'-0" (FIN. OP'G)	-	-	HM	F1	-		00	FRAMED OPENING
	104b	104	CORRIDOR	INT.	-	6'-8"x 7'-0" (FIN. OP'G)	-	-	HM	F1	-		00	FRAMED OPENING
	105	105	OFFICE	INT.	ALUM. ENTRANCE	3'-0"x 7'-0"x 1-3/4"	SF5	-	ALUM.	SF5	GL-3		01	KAUKEER 5000 STANDARD ENTRANCE DOOR
	106	106	INSTRUCTIONAL	INT.	ALUM. ENTRANCE	3'-0"x 7'-0"x 1-3/4"	SF5	-	ALUM.	SF5	GL-3		01	KAUKEER 5000 STANDARD ENTRANCE DOOR
	107a	107a	CORRIDOR	INT.	-	6'-0"x 7'-0" (FIN. OP'G)	-	-	HM	F1	-		00	FRAMED OPENING
	107b	107a	CORRIDOR	EXT.	ALUM. ENTRANCE	(1 PR.) 3'-0"x 7'-0"x 1-3/4"	SF7	-	ALUM.	SF7	GL-2		06-1	KAUKEER 5000 STANDARD ENTRANCE DOOR
	107c	107	DINING	EXT.	ALUM. ENTRANCE	(1 PR.) 3'-0"x 7'-0"x 1-3/4"	SF2	-	ALUM.	SF2	GL-2		06-1	KAUKEER 5000 STANDARD ENTRANCE DOOR
	107d	107	DINING	EXT.	ALUM. ENTRANCE	(1 PR.) 3'-0"x 7'-0"x 1-3/4"	SF2	-	ALUM.	SF2	GL-2		06-1	KAUKEER 5000 STANDARD ENTRANCE DOOR
	107e	107	DINING	EXT.	ALUM. ENTRANCE	(1 PR.) 3'-0"x 7'-0"x 1-3/4"	SF2	-	ALUM.	SF2	GL-2		06-1	KAUKEER 5000 STANDARD ENTRANCE DOOR
	108a	108	INSTRUCTIONAL	INT.	ALUM. ENTRANCE	3'-0"x 7'-0"x 1-3/4"	SF6	-	ALUM.	SF6	GL-3		01-2	KAUKEER 5000 STANDARD ENTRANCE DOOR
	108b	108	INSTRUCTIONAL	EXT.	ALUM. ENTRANCE	3'-0"x 7'-0"x 1-3/4"	SF4	-	ALUM.	SF4	GL-2		01	KAUKEER 5000 STANDARD ENTRANCE DOOR
	109	109	STORAGE CLOSET	INT.	H.M. DOOR	(1 PR.) 3'-0"x 7'-0"x 1-3/4"	D1	-	HM	F2	-		03	
	110	110	UNISEX RESTROOM	INT.	WOOD VENEER	3'-0"x 7'-0"x 1-3/4"	D1	-	HM	F1	-		05	
	110a	110a	JANITOR'S CLOSET	INT.	H.M. DOOR	3'-0"x 7'-0"x 1-3/4"	D3	-	HM	F1	-		04-1	
	111a	111	INSTRUCTIONAL	INT.	ALUM. ENTRANCE	3'-0"x 7'-0"x 1-3/4"	SF6	-	ALUM.	SF6	GL-3		01-2	KAUKEER 5000 STANDARD ENTRANCE DOOR
	111b	111	INSTRUCTIONAL	EXT.	ALUM. ENTRANCE	3'-0"x 7'-0"x 1-3/4"	SF4	-	ALUM.	SF4	GL-2		01	KAUKEER 5000 STANDARD ENTRANCE DOOR
	112	112	STORAGE CLOSET	INT.	H.M. DOOR	(1 PR.) 3'-0"x 7'-0"x 1-3/4"	D1	-	HM	F2	-		03	
	113a	113	INSTRUCTIONAL	INT.	ALUM. ENTRANCE	3'-0"x 7'-0"x 1-3/4"	SF6	-	ALUM.	SF6	GL-3		01-2	KAUKEER 5000 STANDARD ENTRANCE DOOR
	113b	113	INSTRUCTIONAL	EXT.	ALUM. ENTRANCE	3'-0"x 7'-0"x 1-3/4"	SF4	-	ALUM.	SF4	GL-2		01	KAUKEER 5000 STANDARD ENTRANCE DOOR
	115a	115	KITCHEN	INT.	H.M. DOOR	3'-0"x 7'-0"x 1-3/4"	D4	2HR	HM	F1	GL-1		01-3	
	115b	115	KITCHEN	INT.	H.M. DOOR	3'-0"x 7'-0"x 1-3/4"	D4	2HR	HM	F1	GL-1		01-3	
	115c	115	KITCHEN	EXT.	H.M. DOOR	4'-0"x 7'-0"x 1-3/4"	D3	-	HM	F3	-		08	STEELCRAFT HM SERIES L18 W POLYURETHANE CORE
	115d	115	KITCHEN	EXT.	H.M. DOOR	4'-0"x 7'-0"x 1-3/4"	D3	-	HM	F3	-		08	STEELCRAFT HM SERIES L18 W POLYURETHANE CORE
	116a	116	LAUNDRY	INT.	WOOD VENEER	3'-0"x 7'-0"x 1-3/4"	D2	-	HM	F1	GL-3		04-2	
	116b	116	LAUNDRY	EXT.	H.M. DOOR	3'-0"x 7'-0"x 1-3/4"	D3	-	HM	F1	-		01-1	STEELCRAFT HM SERIES L18 W POLYURETHANE CORE
	117	117	PANTRY	INT.	WOOD VENEER	3'-0"x 7'-0"x 1-3/4"	D2	-	HM	F1	GL-3		01-1	
	120	120	ELECTRICAL ROOM	EXT.	H.M. DOOR	3'-0"x 7'-0"x 1-3/4"	D3	-	HM	F1	-		09	STEELCRAFT HM SERIES L18 W POLYURETHANE CORE
	121	121	MECHANICAL ROOM	EXT.	H.M. DOOR	(1 PR.) 3'-0"x 7'-0"x 1-3/4"	D3	-	HM	F2	-		03-1	STEELCRAFT HM SERIES L18 W POLYURETHANE CORE
	122	122	INSTRUCTIONAL ROOM	INT.	ALUM. ENTRANCE	3'-0"x 7'-0"x 1-3/4"	SF5	-	ALUM.	SF5	GL-3		03-1	KAUKEER 5000 STANDARD ENTRANCE DOOR
	122a	122	INSTRUCTIONAL ROOM	EXT.	ALUM. ENTRANCE	3'-0"x 7'-0"x 1-3/4"	SF8	-	ALUM.	SF8	GL-2		01	KAUKEER 5000 STANDARD ENTRANCE DOOR
MEZZ	201	201	STAIR A / MECHANICAL	EXT.	H.M. DOOR	3'-0"x 7'-0"x 1-3/4"	D3	-	HM	F1	-		09	STEELCRAFT HM SERIES L18 W POLYURETHANE CORE
	202	202	MECHANICAL	INT.	H.M. DOOR	3'-0"x 7'-0"x 1-3/4"	D3	-	HM	F1	-		04-3	
	203	203	STORAGE	INT.	H.M. DOOR	3'-0"x 7'-0"x 1-3/4"	D3	-	HM	F1	-		04	

ALUMINUM STOREFRONT ENTRANCE SCHEDULE						
TYPE	SIZE (WxH)	FRAME TYPE	INT / EXT	GLAZING	STOREFRONT SYSTEM	REMARKS
SF1	3'-4" x 7'-2"	ALUM.	EXT.	GL-2	KAUKEER TRIFAB VERSAGLAZE 451T	ALUM. STOREFRONT ENTRANCE SYSTEM, SEE SPECS.
SF1a	3'-4" x 7'-2"	ALUM.	EXT.	GL-2	KAUKEER TRIFAB VERSAGLAZE 451T	ALUM. STOREFRONT VISION PANEL SYSTEM, SEE SPECS.
SF2	6'-4" x 7'-2"	ALUM.	EXT.	GL-2	KAUKEER TRIFAB VERSAGLAZE 451T	ALUM. STOREFRONT ENTRANCE SYSTEM, SEE SPECS.
SF3	6'-4" x 9'-4"	ALUM.	EXT.	GL-2	KAUKEER TRIFAB VERSAGLAZE 451T	ALUM. STOREFRONT ENTRANCE SYSTEM, SEE SPECS.
SF4	9'-8" x 9'-4"	ALUM.	EXT.	GL-2	KAUKEER TRIFAB VERSAGLAZE 451T	ALUM. STOREFRONT ENTRANCE SYSTEM, SEE SPECS.
SF5	6'-6" x 7'-2"	ALUM.	INT.	GL-3	KAUKEER TRIFAB VERSAGLAZE 451	ALUM. STOREFRONT ENTRANCE SYSTEM, SEE SPECS.
SF6	9'-8" x 7'-2"	ALUM.	INT.	GL-3	KAUKEER TRIFAB VERSAGLAZE 451	ALUM. STOREFRONT ENTRANCE SYSTEM, SEE SPECS.
SF7	6'-4" x 9'-4"	ALUM.	EXT.	GL-2	KAUKEER TRIFAB VERSAGLAZE 451T	ALUM. STOREFRONT ENTRANCE SYSTEM, SEE SPECS.
SF8	9'-8" x 7'-2"	ALUM.	EXT.	GL-2	KAUKEER TRIFAB VERSAGLAZE 451T	ALUM. STOREFRONT ENTRANCE SYSTEM, SEE SPECS.



KEY PLAN

N.T.S.

GLAZING KEY:

- GL-1 FIRE RATED GLASS
- GL-2 1" INSULATED GLASS, TEMPERED*
- GL-3 1/2" TEMPERED GLASS

* OUTDOOR LITE SHALL BE 1/2" CLEAR TEMPERED GLASS WITH SOLARBAN 60 COATING ON THE #2 SURFACE. THE 1/2" AIRSPACE SHALL BE 95% ARGON AND 5% AIR MIX. THE INDOOR LITE SHALL BE 1/2" CLEAR TEMPERED WITH AN ENERGY SELECT 73 COATING ON THE #4 SURFACE. THE PERFORMANCE RATINGS ARE AS FOLLOWS:
U = 0.20, SHGC = 0.37, VTL = 66%

07/08/2022	ADDENDUM #2
07/01/2022	ADDENDUM #1
06/24/2022	ISSUED FOR BID
No.	Date
Revision	

STRUCTURAL ENGINEER
D.R. Pilla Consulting Engineers
143 Main Street
Nyack, NY 10960
PH (845) 727-7793

**FOR REFERENCE ONLY
CIVIL ENGINEER**
Boris Engineering, Surveying & Landscape Architecture, P.C.
3 Garrett Place
Camden, NY 10512
PH (845) 225-9690

Architect

PETER GISOLFI ASSOCIATES
Architects · Landscape Architects, LLP

566 Warburton Avenue, Hastings-on-Hudson, NY 10706
Phone: (914) 478-3677 · Fax: (914) 478-1600

Project Title

**CAMP KAUFMANN
GIRL SCOUTS OF
GREATER NEW YORK**

81 CAMP ROAD
HOLMES, NY 12531

Drawing Title

**ALUM. STOREFRONT
SYSTEM & DOOR SCHED.**

Seal & Signature	Date: 06/21/2021
	PROJECT No: 2005
	DRAWN BY: CS, RW, MK
	CHK BY: NL
	DWG No:
	A-900
	CADD FILE No:
	W:\2005 Girl Scouts of Greater NY

ALUMINUM STOREFRONT WINDOW SCHEDULE					
TYPE	SIZE (WxH)	FRAME TYPE	GLAZING	STOREFRONT SYSTEM	REMARKS
W-1	SEE ELEVATION	ALUM.	GL-2	KAWNEER TRIFAB VERSAGLAZE 45IT	ALUM. STOREFRONT WINDOW, SEE SPECS.
W-2	SEE ELEVATION	ALUM.	GL-2	KAWNEER TRIFAB VERSAGLAZE 45IT	ALUM. STOREFRONT WINDOW, SEE SPECS.
W-3	SEE ELEVATION	ALUM.	GL-2	KAWNEER TRIFAB VERSAGLAZE 45IT	ALUM. STOREFRONT WINDOW, SEE SPECS.
W-4	SEE ELEVATION	ALUM.	GL-2	KAWNEER TRIFAB VERSAGLAZE 45IT	ALUM. STOREFRONT WINDOW, SEE SPECS.
W-5	SEE ELEVATION	ALUM.	GL-2	KAWNEER TRIFAB VERSAGLAZE 45IT	ALUM. STOREFRONT WINDOW, SEE SPECS.
W-6	SEE ELEVATION	ALUM.	GL-2	KAWNEER TRIFAB VERSAGLAZE 45IT	ALUM. STOREFRONT WINDOW, SEE SPECS.
W-7	SEE ELEVATION	ALUM.	GL-2	KAWNEER TRIFAB VERSAGLAZE 45IT	ALUM. STOREFRONT WINDOW, SEE SPECS.
W-8	SEE ELEVATION	ALUM.	GL-2	KAWNEER TRIFAB VERSAGLAZE 45IT	ALUM. STOREFRONT WINDOW, SEE SPECS.
W-9	SEE ELEVATION	ALUM.	GL-2	KAWNEER TRIFAB VERSAGLAZE 45IT	ALUM. STOREFRONT WINDOW, SEE SPECS.
W-10	SEE ELEVATION	ALUM.	GL-2	KAWNEER TRIFAB VERSAGLAZE 45IT	ALUM. STOREFRONT WINDOW, SEE SPECS.
W-11	SEE ELEVATION	ALUM.	GL-2	KAWNEER TRIFAB VERSAGLAZE 45IT	ALUM. STOREFRONT WINDOW, SEE SPECS.
W-12	SEE ELEVATION	ALUM.	GL-2	KAWNEER TRIFAB VERSAGLAZE 45IT	ALUM. STOREFRONT WINDOW, SEE SPECS.
W-13	SEE ELEVATION	ALUM.	GL-2	KAWNEER TRIFAB VERSAGLAZE 45IT	ALUM. STOREFRONT WINDOW, SEE SPECS.
W-14	SEE ELEVATION	ALUM.	GL-2	KAWNEER TRIFAB VERSAGLAZE 45IT	ALUM. STOREFRONT WINDOW, SEE SPECS.
W-15	SEE ELEVATION	ALUM.	GL-2	KAWNEER TRIFAB VERSAGLAZE 45IT	ALUM. STOREFRONT WINDOW, SEE SPECS.
W-16	SEE ELEVATION	ALUM.	GL-2	KAWNEER TRIFAB VERSAGLAZE 45IT	ALUM. STOREFRONT WINDOW, SEE SPECS.
W-17	SEE ELEVATION	ALUM.	GL-2	KAWNEER TRIFAB VERSAGLAZE 45IT	ALUM. STOREFRONT WINDOW, SEE SPECS.
W-18	SEE ELEVATION	ALUM.	GL-2	KAWNEER TRIFAB VERSAGLAZE 45IT	ALUM. STOREFRONT WINDOW, SEE SPECS.

ARCHITECTURAL LOUVER SCHEDULE					
TYPE	SIZE (WxH)	MODEL	DESCRIPTION	SCREEN	REMARKS
L-1	SEE ELEVATION	AIROLITE K6844	ALUMINUM DRAINABLE LOUVER	YES	COORDINATE WITH MECHANICAL DRAWINGS
L-2	SEE ELEVATION	ARCH GRILLE AG10	ALUMINUM TRANSFER GRILLE	NO	PROVIDE WITH 'H' FRAME. POWDER COAT TO MATCH WALL COLOR
L-3	SEE ELEVATION	AIROLITE K6844	ALUMINUM DRAINABLE LOUVER	YES	COORDINATE WITH MECHANICAL DRAWINGS
L-3a	SEE ELEVATION	AIROLITE K6844	ALUMINUM DRAINABLE LOUVER	YES	WITHIN DOOR TRANSOM. COORDINATE WITH MECHANICAL DRAWINGS
L-4	SEE ELEVATION	AIROLITE K6844	ALUMINUM DRAINABLE LOUVER	YES	COORDINATE WITH MECHANICAL DRAWINGS
L-5	SEE ELEVATION	AIROLITE K6844	ALUMINUM DRAINABLE LOUVER	YES	COORDINATE WITH MECHANICAL DRAWINGS
L-6	SEE ELEVATION	AIROLITE K6844	ALUMINUM DRAINABLE LOUVER	YES	WITHIN DOOR TRANSOM. COORDINATE WITH MECHANICAL DRAWINGS
L-7	SEE ELEVATION	AIROLITE K6844	ALUMINUM DRAINABLE LOUVER	YES	COORDINATE WITH MECHANICAL DRAWINGS

L-1 ARCHITECTURAL LOUVER
SCALE: 3/8"=1'-0"

L-2 ARCHITECTURAL GRILLE (AIR RETURN)
SCALE: 3/8"=1'-0"

L-3 ARCHITECTURAL LOUVER (ECONOMIZER RELIEF LOUVER)
SCALE: 3/8"=1'-0"

L-4 ARCHITECTURAL LOUVER
SCALE: 3/8"=1'-0"

L-5 ARCHITECTURAL LOUVER
SCALE: 3/8"=1'-0"

L-6 ARCHITECTURAL LOUVER
SCALE: 3/8"=1'-0"

L-7 ARCHITECTURAL LOUVER
SCALE: 3/8"=1'-0"

W-1 ALUM STOREFRONT WINDOW
SCALE: 3/8"=1'-0"

W-2 ALUM STOREFRONT WINDOW
SCALE: 3/8"=1'-0"

W-3 ALUM STOREFRONT WINDOW
SCALE: 3/8"=1'-0"

W-4 ALUM STOREFRONT WINDOW
SCALE: 3/8"=1'-0"

W-5 ALUM STOREFRONT WINDOW
SCALE: 3/8"=1'-0"

W-6 ALUM STOREFRONT WINDOW
SCALE: 3/8"=1'-0"

W-7 ALUM STOREFRONT WINDOW
SCALE: 3/8"=1'-0"

W-8 ALUM STOREFRONT WINDOW
SCALE: 3/8"=1'-0"

W-9 ALUM STOREFRONT WINDOW
SCALE: 3/8"=1'-0"

W-10 ALUM STOREFRONT WINDOW
SCALE: 3/8"=1'-0"

W-11 ALUM STOREFRONT WINDOW
SCALE: 3/8"=1'-0"

W-12 ALUM STOREFRONT WINDOW
SCALE: 3/8"=1'-0"

W-13 ALUM STOREFRONT WINDOW
SCALE: 3/8"=1'-0"

W-14 ALUM STOREFRONT WINDOW
SCALE: 3/8"=1'-0"

W-15 ALUM STOREFRONT WINDOW
SCALE: 3/8"=1'-0"

W-16 ALUM STOREFRONT WINDOW
SCALE: 3/8"=1'-0"

W-17 ALUM STOREFRONT WINDOW
SCALE: 3/8"=1'-0"

W-18 ALUM STOREFRONT WINDOW
SCALE: 3/8"=1'-0"

N.T.S.

GLAZING KEY:
GL-1 FIRE RATED GLASS
GL-2 1" INSULATED GLASS, TEMPERED*
GL-3 1/2" TEMPERED GLASS

* OUTDOOR LITE SHALL BE 1/2" CLEAR TEMPERED GLASS WITH SOLARBAN 60 COATING ON THE #2 SURFACE. THE 1/2" AIRSPACE SHALL BE 95% ARGON AND 5% AIR MIX. THE INDOOR LITE SHALL BE 1/2" CLEAR TEMPERED WITH AN ENERGY SELECT 73 COATING ON THE #4 SURFACE. THE PERFORMANCE RATINGS ARE AS FOLLOWS:
U = 0.20, SHGC = 0.37, VTL = 66%

07/08/2022	ADDENDUM #2		
07/01/2022	ADDENDUM #1		
06/24/2022	ISSUED FOR BID		
No.	Date	Revision	
STRUCTURAL ENGINEER D.R. Pilla Consulting Engineers 143 Main Street Nyack, NY 10960 PH (845) 727-7793			FOR REFERENCE ONLY CIVIL ENGINEER Boris Engineering, Surveying & Landscape Architecture, P.C. 3 Garrett Place Camel, NY 10512 PH (845) 225-9600
Architect PETER GISOLFI ASSOCIATES Architects · Landscape Architects, LLP 566 Warburton Avenue, Hastings-on-Hudson, NY 10706 Phone: (914) 478-3677 · Fax: (914) 478-1600			

Project Title
CAMP KAUFMANN
GIRL SCOUTS OF
GREATER NEW YORK
81 CAMP ROAD
HOLMES, NY 12531

Drawing Title
WINDOW SCHEDULE

Seal & Signature	Date: 06/21/2021
	PROJECT No: 2005
	DRAWN BY: CS, RW, MK
	CHK BY: NL
	DWG No: A-901
	CADD FILE No: -
	W:2005 Girl Scouts of Greater NY