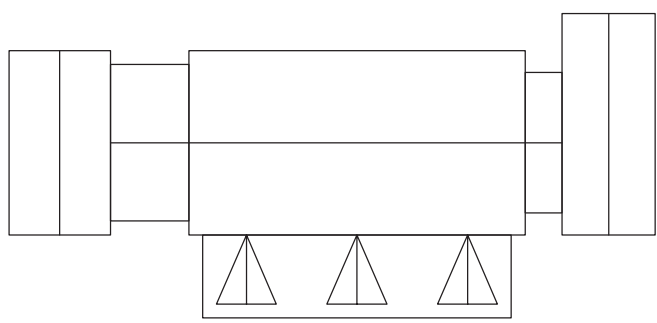



KEY PLAN



N.T.S.

NOTE

- STEEL STAIRS SHALL BE ENGINEERED AND CONSTRUCTED FROM THE FOLLOWING:
 - TREADS: 11" x 42" DIAMOND STEEL PLATE TREADS (WELDED TO STEEL STRINGER) WITH SCREWED DOWN NON-SLIP NOSING.
 - RISERS: CLOSED RISERS SHALL BE 1" MAX. AND CONSTRUCTED FROM DIAMOND PLATE WELDED TO STEEL STRINGER. STRINGER: STRINGER SHALL BE "C" CHANNEL.
 - HANDRAIL: HANDRAIL SHALL BE 1 1/2" DIA. STEEL TUBE HANDRAIL (BOTH SIDES OF STAIR) BOLTED TO WALL.
 - FINISH: PRIMED WITH RUST INHIBITOR AND PAINTED.
 - FLOOR TO FLOOR HEIGHT IS 10'-0".
- CONTRACTOR SHALL FIELD VERIFY ALL DIM. PRIOR TO FABRICATION.
- ALL EXPOSED WOOD AT EXTERIOR INCLUDING POSTS, BEAMS, TRIMS, RAFTERS, AND ROOF DECK AT PORTICO # 4 2 SHALL BE RED CEDAR (STAINED), UNLESS STATED OTHERWISE.

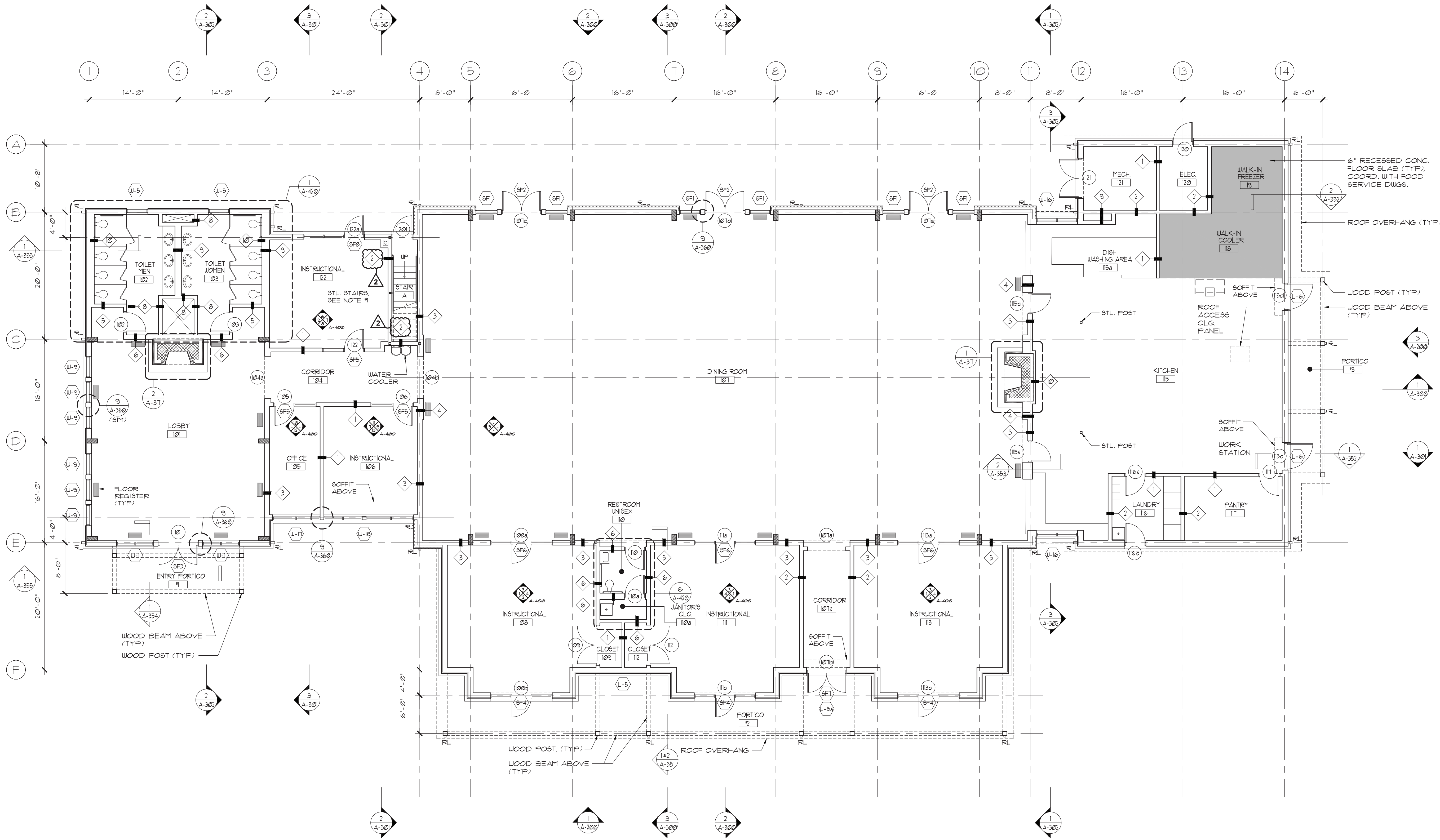
	07/08/2022	ADDENDUM #2		
	07/01/2022	ADDENDUM #1		
	06/24/2022	ISSUED FOR BID		
No.	Date	Revision		
<table><tr><td>STRUCTURAL ENGINEER D.R. Pilla Consulting Engineers 143 Main Street Nyack, NY 10960 PH (845) 727-7793</td><td>FOR REFERENCE ONLY CIVIL ENGINEER Insite Engineering, Surveying & Landscape Architecture, P.C. 3 Garrett Place Carmel, NY 10512 PH (845) 225-9690</td></tr></table>			STRUCTURAL ENGINEER D.R. Pilla Consulting Engineers 143 Main Street Nyack, NY 10960 PH (845) 727-7793	FOR REFERENCE ONLY CIVIL ENGINEER Insite Engineering, Surveying & Landscape Architecture, P.C. 3 Garrett Place Carmel, NY 10512 PH (845) 225-9690
STRUCTURAL ENGINEER D.R. Pilla Consulting Engineers 143 Main Street Nyack, NY 10960 PH (845) 727-7793	FOR REFERENCE ONLY CIVIL ENGINEER Insite Engineering, Surveying & Landscape Architecture, P.C. 3 Garrett Place Carmel, NY 10512 PH (845) 225-9690			
M.E.P. ENGINEER Treston Veregian Consulting Engineers 68 Purchase Street, Rye, NY 10580 PH (914) 967-9505				

Architect
PETER GISOLFI ASSOCIATES
Architects · Landscape Architects, LLP
566 Warburton Avenue, Hastings-on-Hudson, NY 10706
Phone: (914) 478-3677 · Fax: (914) 478-1600

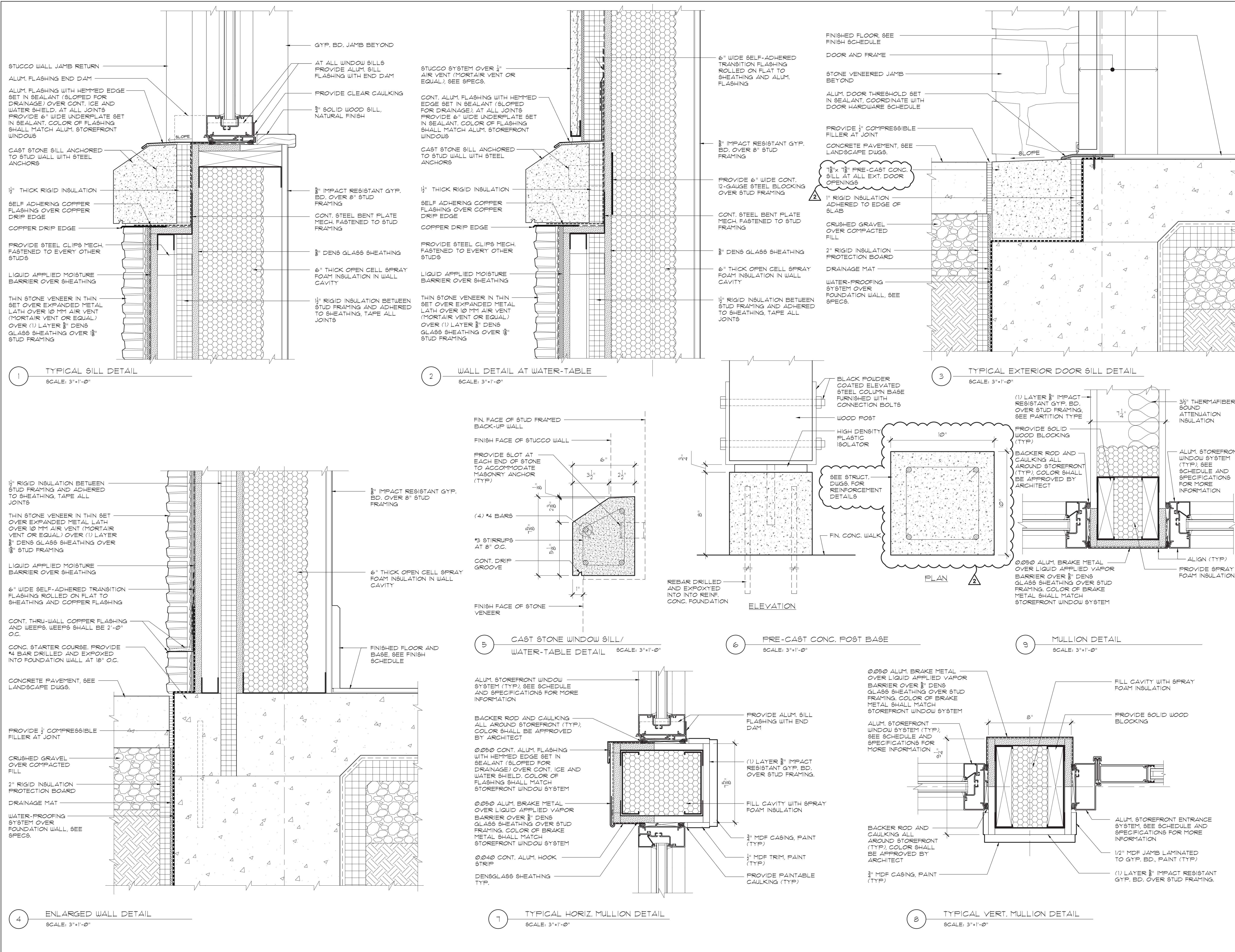
Project Title
**CAMP KAUFMANN
GIRL SCOUTS OF
GREATER NEW YORK**
81 CAMP ROAD
HOLMES, NY 12531

Drawing Title
**FIRST FLOOR
CONSTRUCTION PLAN**

Seal & Signature	Date:	06/21/2021
	PROJECT No:	2005
	DRAWN BY:	CS, RW, MK
	CHK BY:	NL
	DWG No:	A-101
CADD FILE No:		-
W:\2005 Girl Scouts of Greater NY		



1 FIRST FLOOR CONSTRUCTION PLAN
SCALE: 1/8"=1'-0"



KEY PLAN

N.T.S.

GENERAL CONSTRUCTION NOTES

- IF DISCREPANCIES ARE FOUND BETWEEN ARCHITECTURAL DRAWINGS, AND STRUCTURAL DRAWINGS, CONTRACTOR SHALL CONTACT ARCHITECT FOR CLARIFICATION OR RESOLUTION BEFORE PROCEEDING WITH THE WORK.
- IF DISCREPANCIES ARE FOUND BETWEEN ARCHITECTURAL DRAWINGS, AND ROOFING DRAWINGS, CONTRACTOR SHALL CONTACT ARCHITECT FOR CLARIFICATION OR RESOLUTION BEFORE PROCEEDING WITH THE WORK.
- PLACE WEEP HOLES AT 24" O.C. ABOVE EACH FLASHING TERMINATION POINT. CONTRACTOR SHALL NOT COVER ANY WEEP HOLES NEAR GRADE WITH SOIL OR LANDSCAPE MATERIAL.
- PROVIDE FIRE RESISTANT COATING ON ALL EXPOSED SURFACES OF SPRAY-FOAM INSULATION.
- AT STUD WALLS WHERE CAST STONE SILLS, ROOF AND OTHER FLASHING ASSEMBLIES ARE TO BE INSTALLED PROVIDE 12 GAUGE STEEL PLATE BLOCKING BEHIND SHEATHING (OVER STUD FRAMING) TO RECEIVE FASTENERS.

No.	Date	Revision
1.	06/24/2022	ISSUED FOR BID
No. Date Revision		

STRUCTURAL ENGINEER
D.R. Pilla Consulting Engineers
143 Main Street
Nyack, NY 10960
PH (845) 727-7793

FOR REFERENCE ONLY
CIVIL ENGINEER
Inno Engineering, Surveying & Landscape Architecture, P.C.
3 Garrett Place
Carmel, NY 10512
PH (845) 225-9600

Architect

PETER GISOLFI ASSOCIATES
Architects · Landscape Architects, LLP
566 Warburton Avenue, Hastings-on-Hudson, NY 10706
Phone: (914) 478-3677 · Fax: (914) 478-1600

Project Title

CAMP KAUFMANN
GIRL SCOUTS OF
GREATER NEW YORK
81 CAMP ROAD
HOLMES, NY 12531

Drawing Title

ENLARGED DETAILS

Seal & Signature

Date: 06/21/2021

PROJECT No: 2005

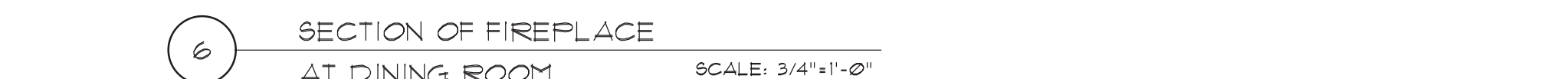
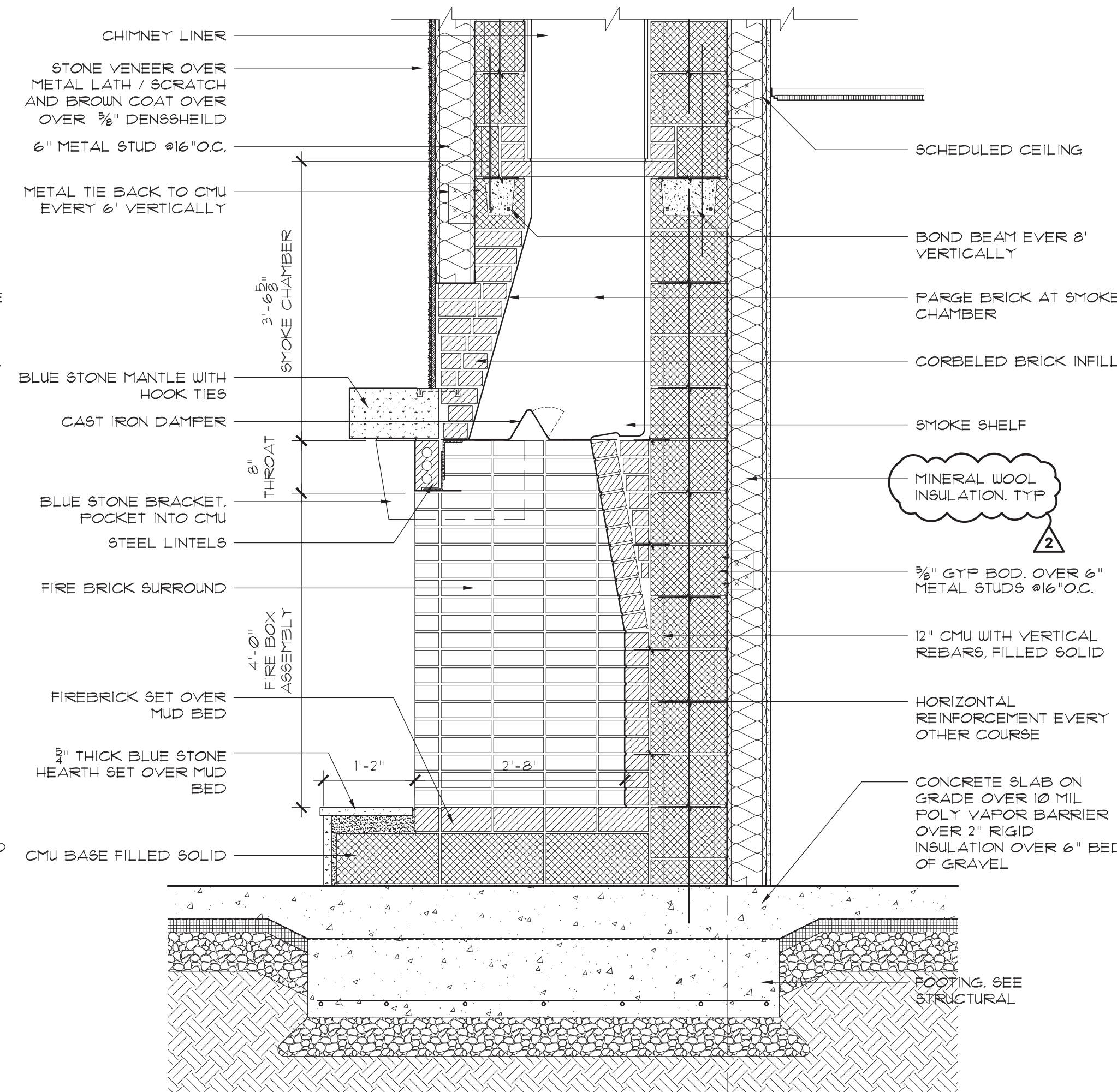
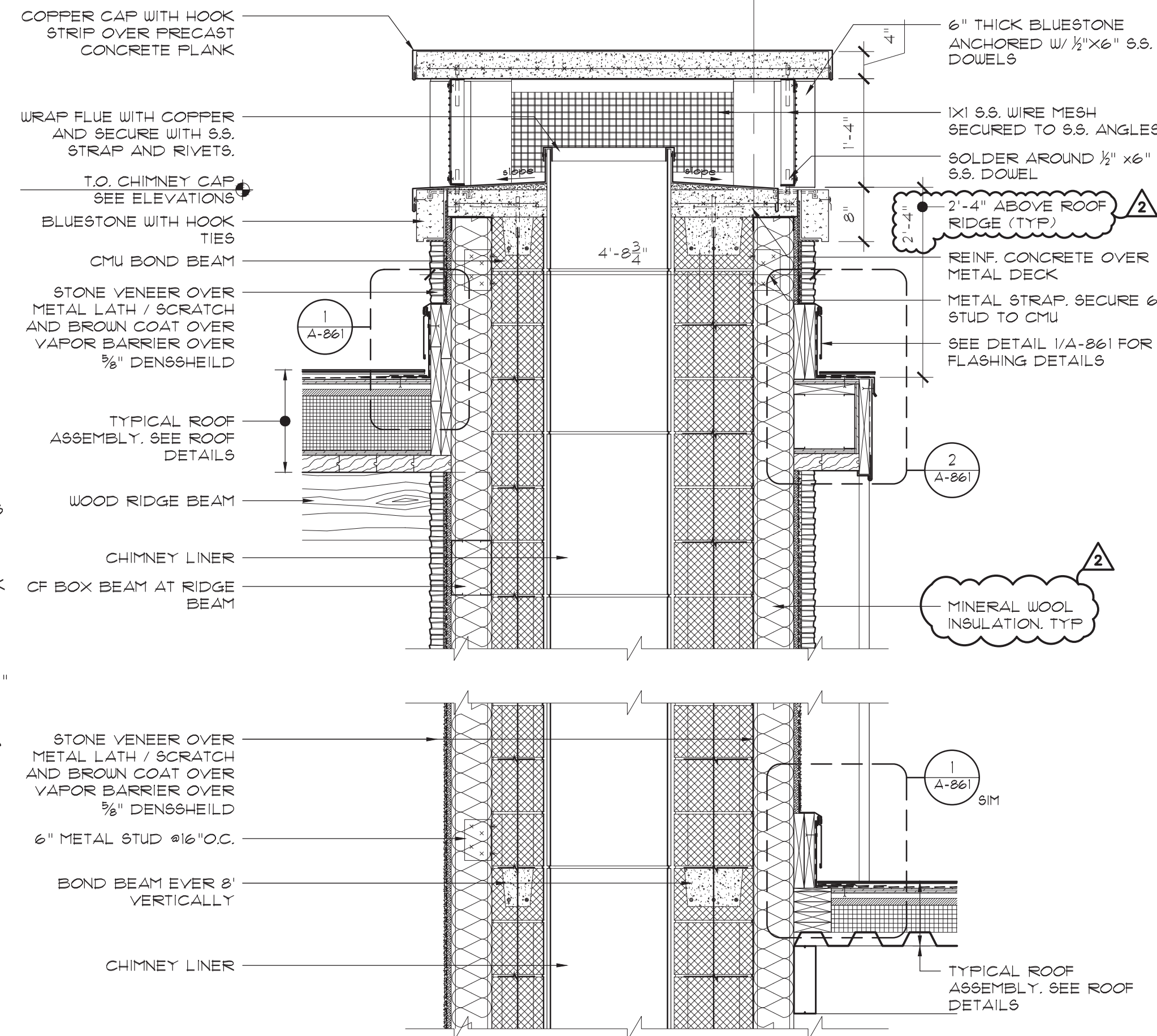
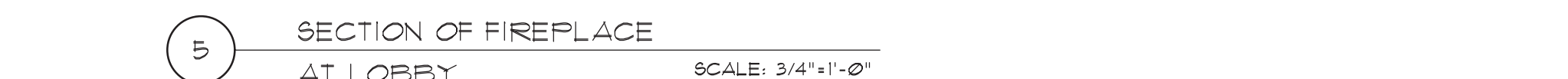
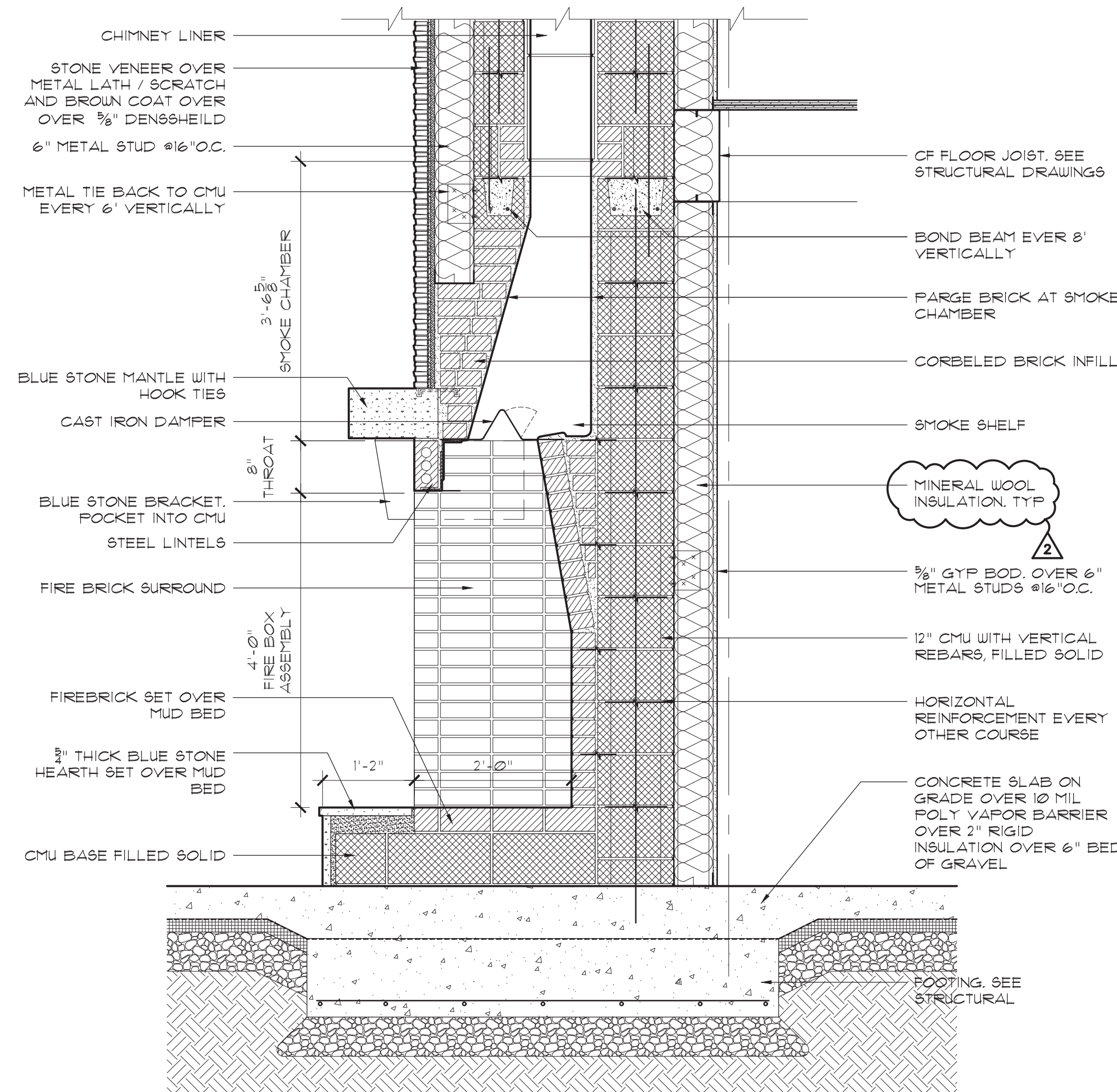
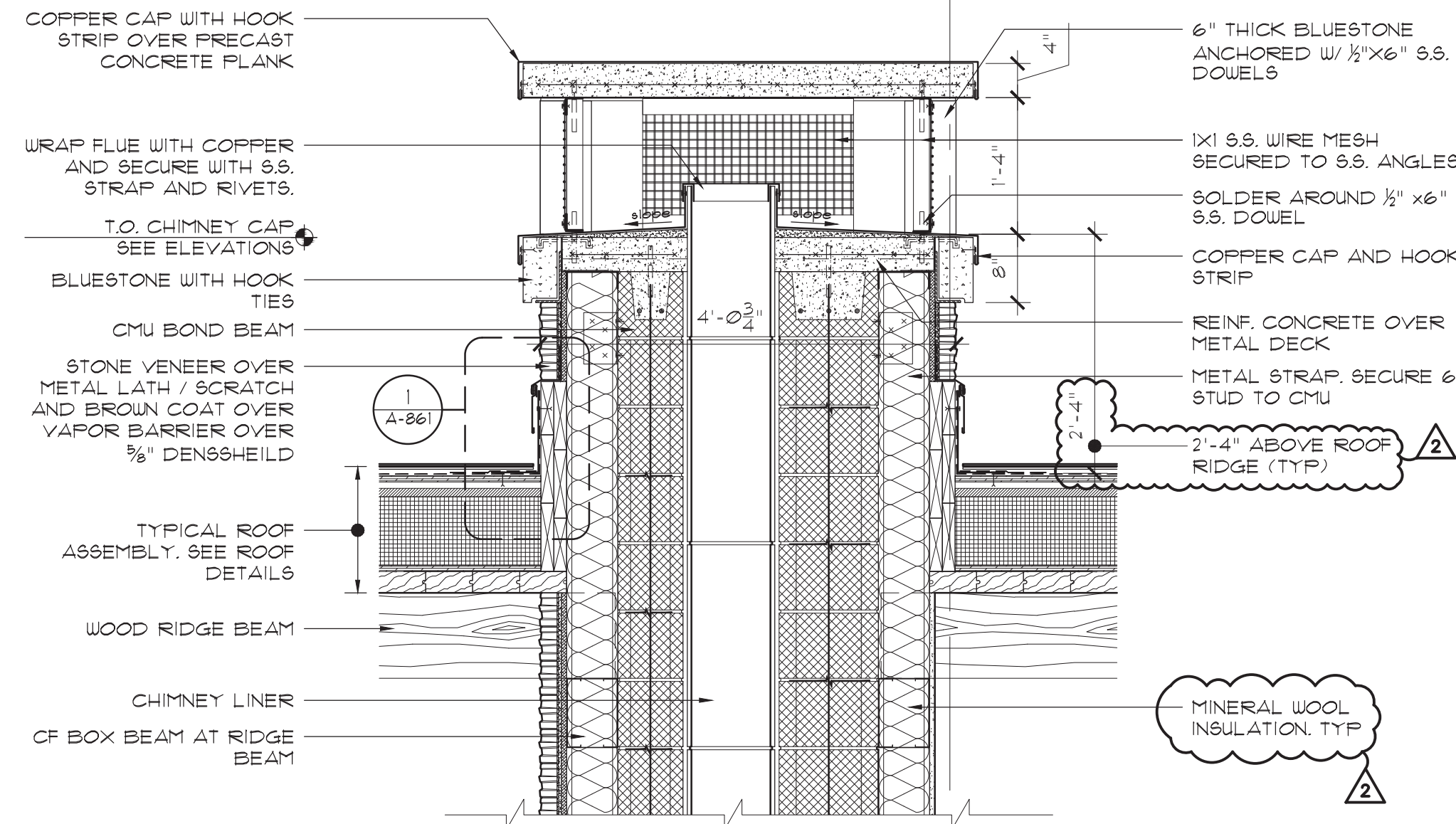
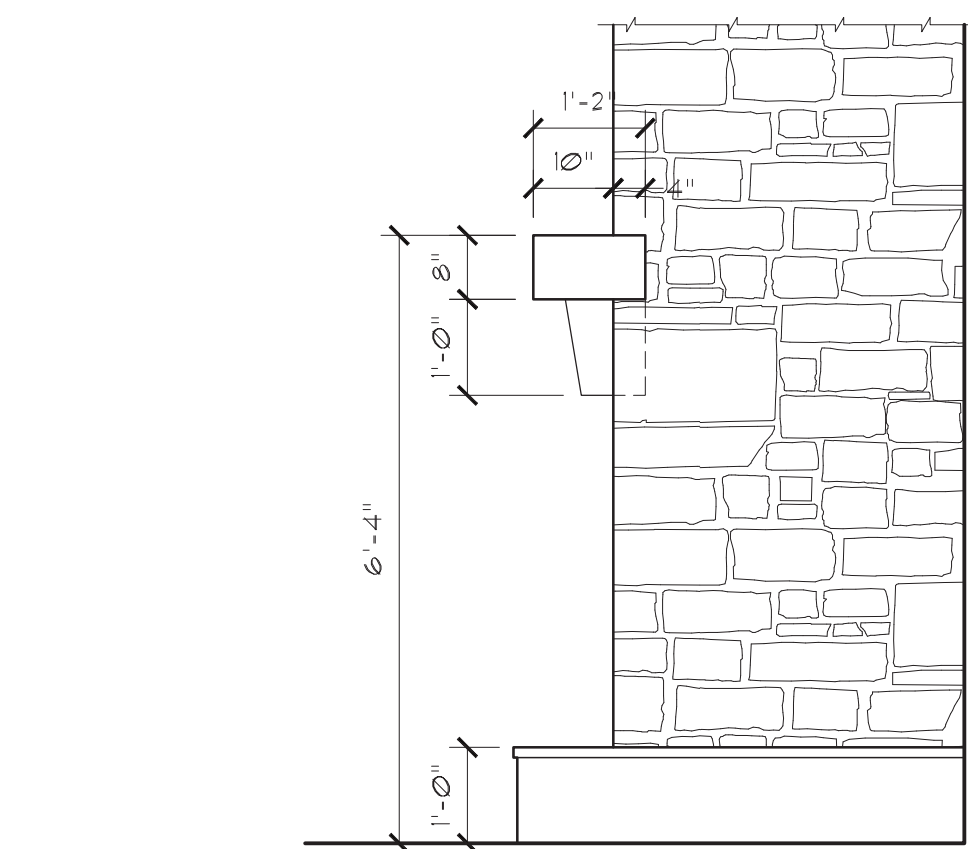
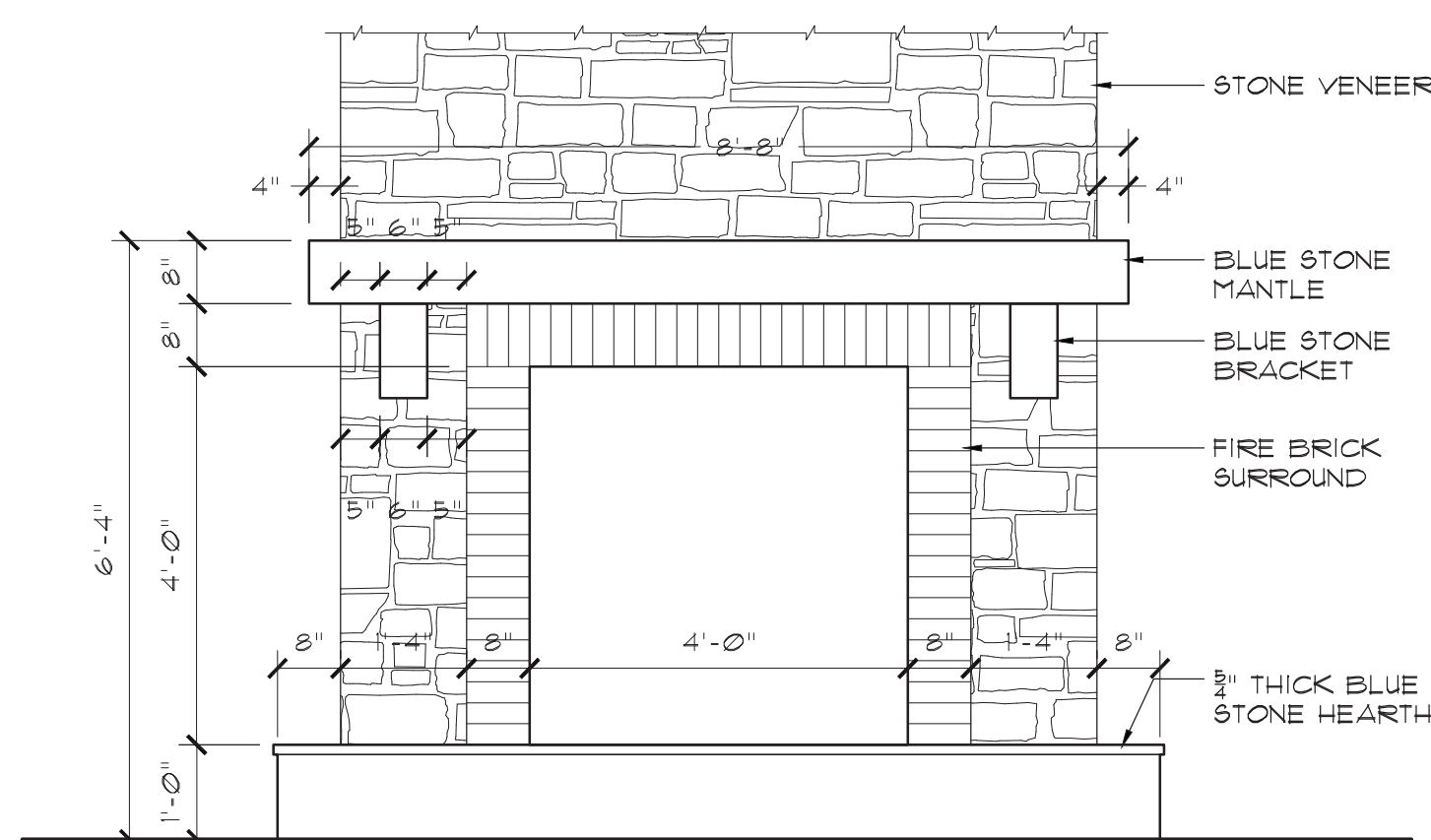
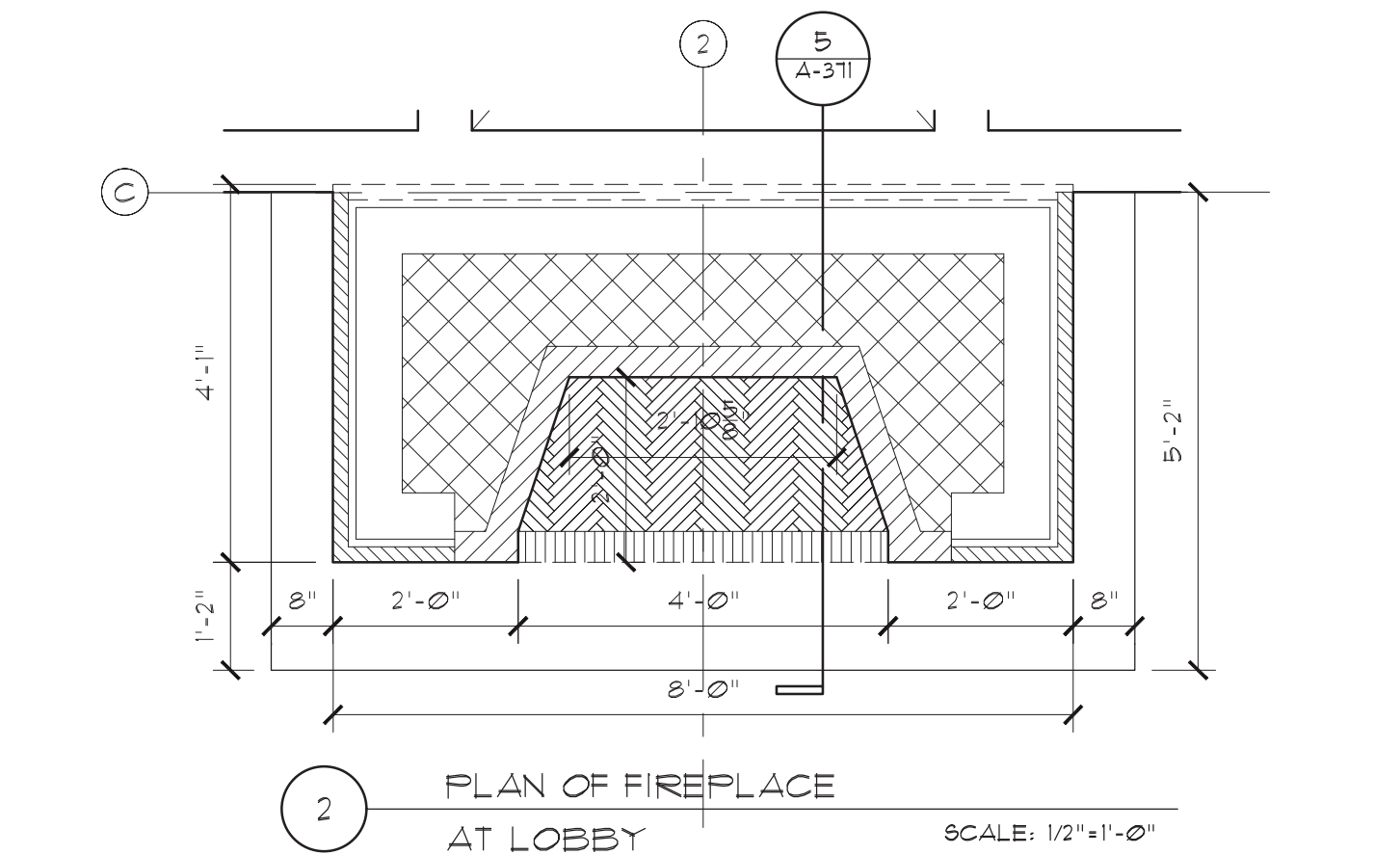
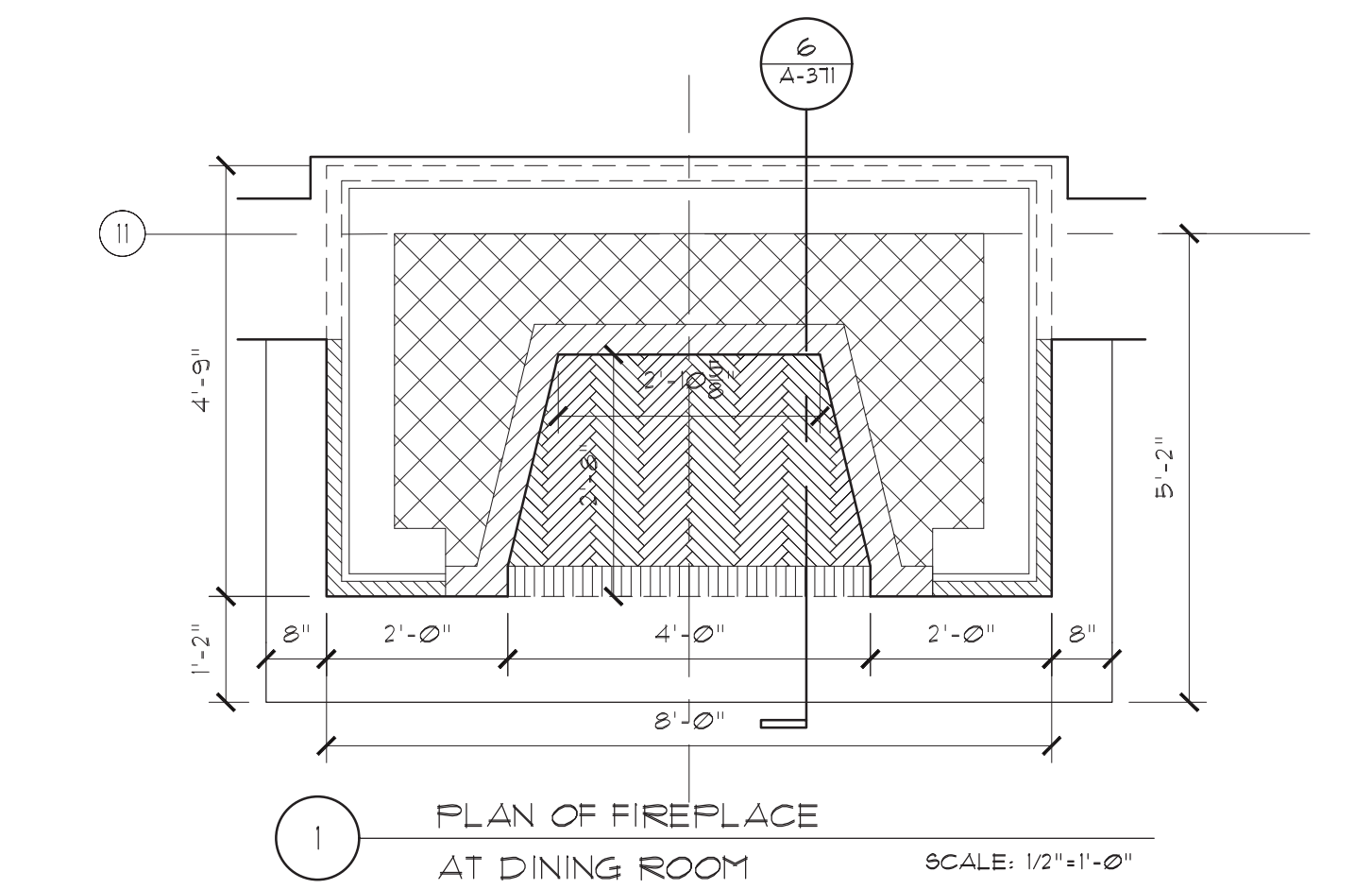
DRAWN BY: CS, RW, MK

CHK BY: NL

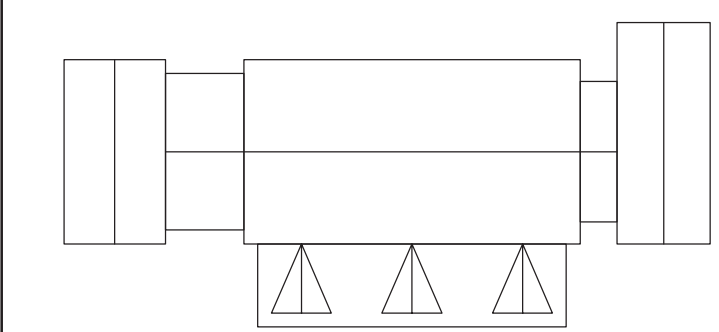
DWG No: A-360

CADD FILE No:

W:\2005 Girl Scouts of Greater NY




KEY PLAN



N.T.S.



	07/08/2022	ADDENDUM #2
	07/01/2022	ADDENDUM #1
	1. 06/24/2022	ISSUED FOR BID
No.	Date	Revision
STRUCTURAL ENGINEER		
D.R. Pilla Consulting Engineers 143 Main Street Nyack, NY 10960 PH (845) 727-7793		
FOR REFERENCE ONLY		
CIVIL ENGINEER		
Dino Engineering, Surveying & Landscape Architecture, P.C. 3 Garrett Place Carmel, NY 10512 PH (845) 225-9600		
M.E.P. ENGINEER		
Tatien Venegas Consulting Engineers 68 Purchase Street, Rye, NY 10580 PH (914) 967-9505		

Architect
PETER GISOLFI ASSOCIATES
Architects · Landscape Architects, LLP
566 Warburton Avenue, Hastings-on-Hudson, NY 10706
Phone: (914) 478-3677 · Fax: (914) 478-1600

Project Title
**CAMP KAUFMANN
GIRL SCOUTS OF
GREATER NEW YORK**
81 CAMP ROAD
HOLMES, NY 12531

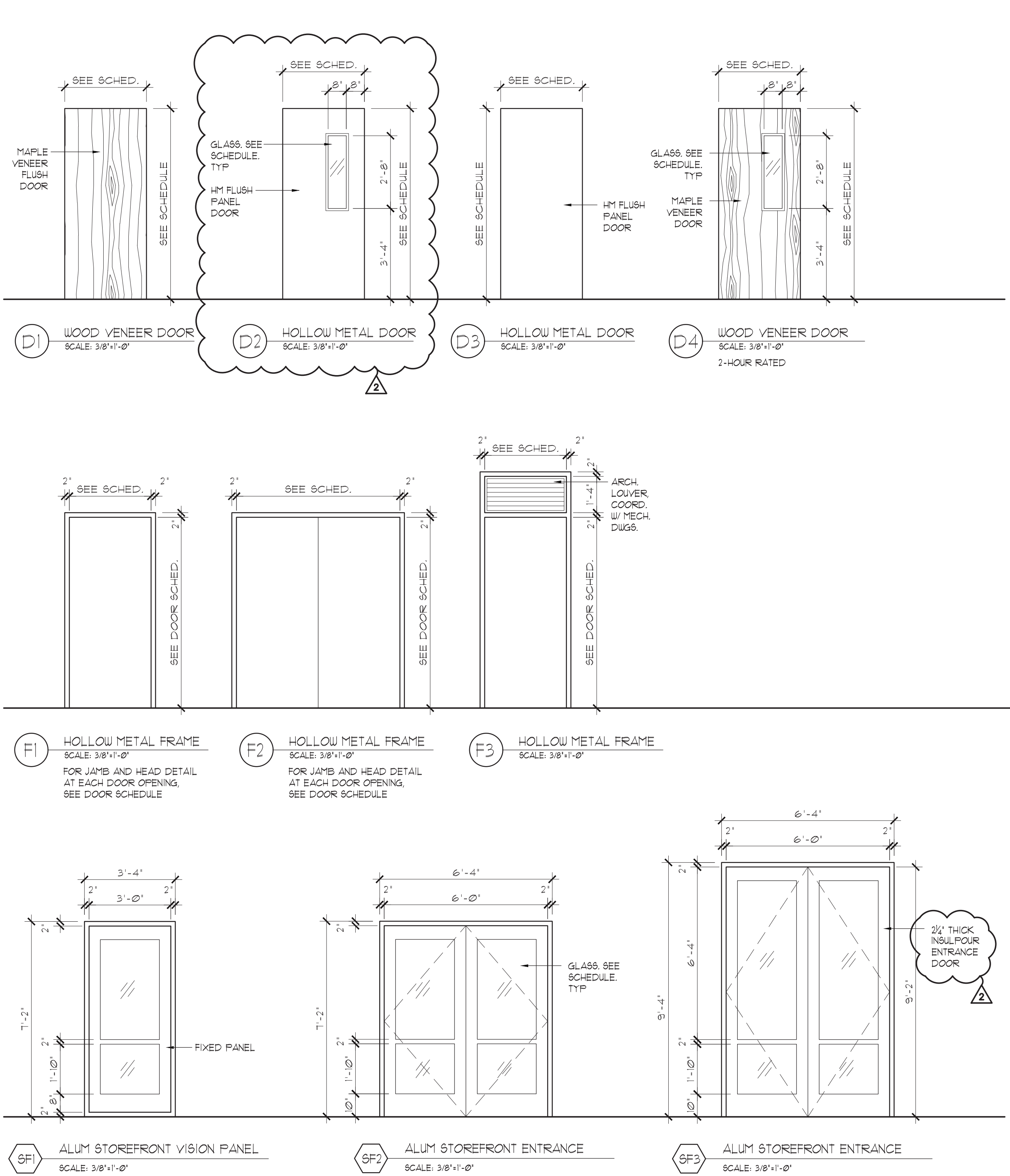
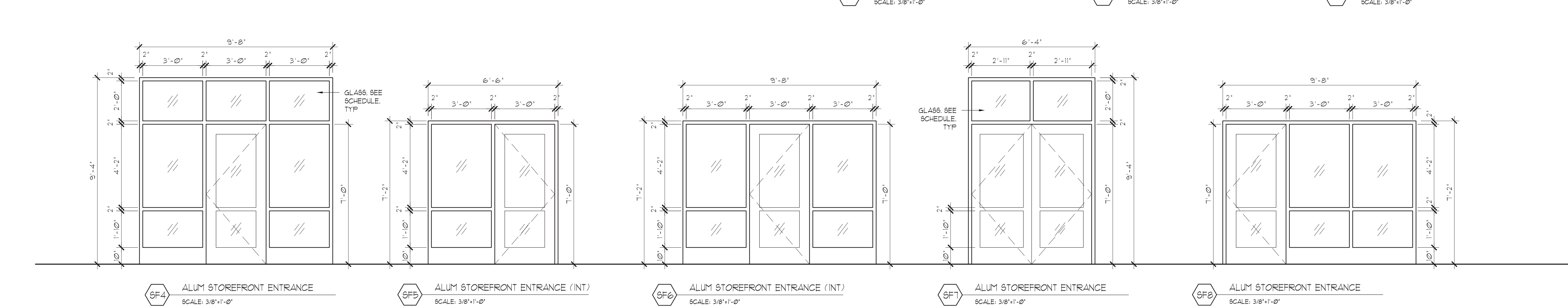
Drawing Title

FIREPLACE DETAILS

Scale & Signature	Date: 06/21/2021
PROJECT No: 2005	
DRAWN BY: CS, RW, MK	
CHK BY: NL	
DWG No:	
A-371	
CADD FILE No:	
W:2005 Girl Scouts of Greater NY	

DOOR SCHEDULE														
FLR	DR#	RM#	RM. NAME	INT/EXT	DESCRIPTION	DOOR SIZE (WxHxT)	DR TYPE	LABEL	FRAME TYPE	FRAME ELEV.	GLAZING	SADDLE/THRESHLD	HARDWARE SET	REMARKS
FIRST FLOOR	101	101	LOBBY	EXT.	ALUM. ENTRANCE	(1 PR.) 3'-0" x 9'-2" x 2'-1/4"	SF3	-	ALUM.	SF3	GL-2		06	KAUKEER 5000 INSULFOUR ENTRANCE DOOR
	102	102	MEN'S TOILET	INT.	WOOD VENEER	3'-0" x 7'-0" x 1-3/4"	D1	-	HM	F1	-		02	
	103	103	WOMEN'S TOILET	INT.	WOOD VENEER	3'-0" x 7'-0" x 1-3/4"	D1	-	HM	F1	-		02	
	104a	104	CORRIDOR	INT.	-	6'-8" x 7'-0" (FIN. OP'G)	-	-	HM	F1	-		00	FRAMED OPENING
	104b	104	CORRIDOR	INT.	-	6'-8" x 7'-0" (FIN. OP'G)	-	-	HM	F1	-		00	FRAMED OPENING
	105	105	OFFICE	INT.	ALUM. ENTRANCE	3'-0" x 7'-0" x 1-3/4"	SF5	-	ALUM.	SF5	GL-3		01	KAUKEER 5000 STANDARD ENTRANCE DOOR
	106	106	INSTRUCTIONAL	INT.	ALUM. ENTRANCE	3'-0" x 7'-0" x 1-3/4"	SF5	-	ALUM.	SF5	GL-3		01	KAUKEER 5000 STANDARD ENTRANCE DOOR
	107a	107a	CORRIDOR	INT.	-	6'-0" x 7'-0" (FIN. OP'G)	-	-	HM	F1	-		00	FRAMED OPENING
	107b	107a	CORRIDOR	EXT.	ALUM. ENTRANCE	(1 PR.) 3'-0" x 7'-0" x 1-3/4"	SF7	-	ALUM.	SF7	GL-2		06-1	KAUKEER 5000 STANDARD ENTRANCE DOOR
	107c	107	DINING	EXT.	ALUM. ENTRANCE	(1 PR.) 3'-0" x 7'-0" x 1-3/4"	SF2	-	ALUM.	SF2	GL-2		06-1	KAUKEER 5000 STANDARD ENTRANCE DOOR
	107d	107	DINING	EXT.	ALUM. ENTRANCE	(1 PR.) 3'-0" x 7'-0" x 1-3/4"	SF2	-	ALUM.	SF2	GL-2		06-1	KAUKEER 5000 STANDARD ENTRANCE DOOR
	107e	107	DINING	EXT.	ALUM. ENTRANCE	(1 PR.) 3'-0" x 7'-0" x 1-3/4"	SF2	-	ALUM.	SF2	GL-2		06-1	KAUKEER 5000 STANDARD ENTRANCE DOOR
	108a	108	INSTRUCTIONAL	INT.	ALUM. ENTRANCE	3'-0" x 7'-0" x 1-3/4"	SF6	-	ALUM.	SF6	GL-3		01-2	KAUKEER 5000 STANDARD ENTRANCE DOOR
	108b	108	INSTRUCTIONAL	EXT.	ALUM. ENTRANCE	3'-0" x 7'-0" x 1-3/4"	SF4	-	ALUM.	SF4	GL-2		01	KAUKEER 5000 STANDARD ENTRANCE DOOR
	109	109	STORAGE CLOSET	INT.	HM. DOOR	(1 PR.) 3'-0" x 7'-0" x 1-3/4"	D1	-	HM	F2	-		03	
	110	110	UNISEX RESTROOM	INT.	WOOD VENEER	3'-0" x 7'-0" x 1-3/4"	D1	-	HM	F1	-		05	
	110a	110a	JANITOR'S CLOSET	INT.	HM. DOOR	3'-0" x 7'-0" x 1-3/4"	D3	-	HM	F1	-		04-1	
	111a	111	INSTRUCTIONAL	INT.	ALUM. ENTRANCE	3'-0" x 7'-0" x 1-3/4"	SF6	-	ALUM.	SF6	GL-3		01-2	KAUKEER 5000 STANDARD ENTRANCE DOOR
	111b	111	INSTRUCTIONAL	EXT.	ALUM. ENTRANCE	3'-0" x 7'-0" x 1-3/4"	SF4	-	ALUM.	SF4	GL-2		01	KAUKEER 5000 STANDARD ENTRANCE DOOR
	112	112	STORAGE CLOSET	INT.	HM. DOOR	(1 PR.) 3'-0" x 7'-0" x 1-3/4"	D1	-	HM	F2	-		03	
	113a	113	INSTRUCTIONAL	INT.	ALUM. ENTRANCE	3'-0" x 7'-0" x 1-3/4"	SF6	-	ALUM.	SF6	GL-3		01-2	KAUKEER 5000 STANDARD ENTRANCE DOOR
	113b	113	INSTRUCTIONAL	EXT.	ALUM. ENTRANCE	3'-0" x 7'-0" x 1-3/4"	SF4	-	ALUM.	SF4	GL-2		01	KAUKEER 5000 STANDARD ENTRANCE DOOR
	115a	115	KITCHEN	INT.	HM. DOOR	3'-0" x 7'-0" x 1-3/4"	D4	2HR	HM	F1	GL-1		01-3	
	115b	115	KITCHEN	INT.	HM. DOOR	3'-0" x 7'-0" x 1-3/4"	D4	2HR	HM	F1	GL-1		01-3	
	115c	115	KITCHEN	EXT.	HM. DOOR	4'-0" x 7'-0" x 1-3/4"	D3	-	HM	F3	-		08	STEELCRAFT HM SERIES L18 W POLYURETHANE CORE
	115d	115	KITCHEN	EXT.	HM. DOOR	4'-0" x 7'-0" x 1-3/4"	D3	-	HM	F3	-		08	STEELCRAFT HM SERIES L18 W POLYURETHANE CORE
	116a	116	LAUNDRY	INT.	WOOD VENEER	3'-0" x 7'-0" x 1-3/4"	D2	-	HM	F1	GL-3		04-2	
	116b	116	LAUNDRY	EXT.	HM. DOOR	3'-0" x 7'-0" x 1-3/4"	D3	-	HM	F1	-		01-1	STEELCRAFT HM SERIES L18 W POLYURETHANE CORE
	117	117	PANTRY	INT.	WOOD VENEER	3'-0" x 7'-0" x 1-3/4"	D2	-	HM	F1	GL-3		01-1	
	120	120	ELECTRICAL ROOM	EXT.	HM. DOOR	3'-0" x 7'-0" x 1-3/4"	D3	-	HM	F1	-		09	STEELCRAFT HM SERIES L18 W POLYURETHANE CORE
	121	121	MECHANICAL ROOM	EXT.	HM. DOOR	(1 PR.) 3'-0" x 7'-0" x 1-3/4"	D3	-	HM	F2	-		03-1	STEELCRAFT HM SERIES L18 W POLYURETHANE CORE
	122	122	INSTRUCTIONAL ROOM	INT.	ALUM. ENTRANCE	3'-0" x 7'-0" x 1-3/4"	SF5	-	ALUM.	SF5	GL-3		03-1	KAUKEER 5000 STANDARD ENTRANCE DOOR
	122a	122	INSTRUCTIONAL ROOM	EXT.	ALUM. ENTRANCE	3'-0" x 7'-0" x 1-3/4"	SF8	-	ALUM.	SF8	GL-2		01	KAUKEER 5000 STANDARD ENTRANCE DOOR
MEZZ	201	201	STAIR A / MECHANICAL	EXT.	HM. DOOR	3'-0" x 7'-0" x 1-3/4"	D3	-	HM	F1	-		09	STEELCRAFT HM SERIES L18 W POLYURETHANE CORE
	202	202	MECHANICAL	INT.	HM. DOOR	3'-0" x 7'-0" x 1-3/4"	D3	-	HM	F1	-		04-3	
	203	203	STORAGE	INT.	HM. DOOR	3'-0" x 7'-0" x 1-3/4"	D3	-	HM	F1	-		04	

ALUMINUM STOREFRONT ENTRANCE SCHEDULE						
TYPE	SIZE (WxH)	FRAME TYPE	INT / EXT	GLAZING	STOREFRONT SYSTEM	REMARKS
SF1	3'-4" x 7'-2"	ALUM.	EXT.	GL-2	KAUKEER TRIFAB VERSAGLAZE 451T	ALUM. STOREFRONT ENTRANCE SYSTEM, SEE SPECS.
SF1a	3'-4" x 7'-2"	ALUM.	EXT.	GL-2	KAUKEER TRIFAB VERSAGLAZE 451T	ALUM. STOREFRONT VISION PANEL SYSTEM, SEE SPECS.
SF2	6'-4" x 7'-2"	ALUM.	EXT.	GL-2	KAUKEER TRIFAB VERSAGLAZE 451T	ALUM. STOREFRONT ENTRANCE SYSTEM, SEE SPECS.
SF3	6'-4" x 9'-4"	ALUM.	EXT.	GL-2	KAUKEER TRIFAB VERSAGLAZE 451T	ALUM. STOREFRONT ENTRANCE SYSTEM, SEE SPECS.
SF4	9'-8" x 9'-4"	ALUM.	EXT.	GL-2	KAUKEER TRIFAB VERSAGLAZE 451T	ALUM. STOREFRONT ENTRANCE SYSTEM, SEE SPECS.
SF5	6'-6" x 7'-2"	ALUM.	INT.	GL-3	KAUKEER TRIFAB VERSAGLAZE 451	ALUM. STOREFRONT ENTRANCE SYSTEM, SEE SPECS.
SF6	9'-8" x 7'-2"	ALUM.	INT.	GL-3	KAUKEER TRIFAB VERSAGLAZE 451	ALUM. STOREFRONT ENTRANCE SYSTEM, SEE SPECS.
SF7	6'-4" x 9'-4"	ALUM.	EXT.	GL-2	KAUKEER TRIFAB VERSAGLAZE 451T	ALUM. STOREFRONT ENTRANCE SYSTEM, SEE SPECS.
SF8	9'-8" x 7'-2"	ALUM.	EXT.	GL-2	KAUKEER TRIFAB VERSAGLAZE 451T	ALUM. STOREFRONT ENTRANCE SYSTEM, SEE SPECS.



KEY PLAN

N.T.S.

GLAZING KEY:

- GL-1 FIRE RATED GLASS
- GL-2 1" INSULATED GLASS, TEMPERED*
- GL-3 1/2" TEMPERED GLASS

* OUTDOOR LITE SHALL BE 1/2" CLEAR TEMPERED GLASS WITH SOLARBAN 60 COATING ON THE #2 SURFACE. THE 1/2" AIRSPACE SHALL BE 95% ARGON AND 5% AIR MIX. THE INDOOR LITE SHALL BE 1/2" CLEAR TEMPERED WITH AN ENERGY SELECT 73 COATING ON THE #4 SURFACE. THE PERFORMANCE RATINGS ARE AS FOLLOWS:
U = 0.20, SHGC = 0.37, VTL = 66%

07/08/2022	ADDENDUM #2
07/01/2022	ADDENDUM #1
06/24/2022	ISSUED FOR BID
No.	Revision

STRUCTURAL ENGINEER
D.R. Pilla Consulting Engineers
143 Main Street
Nyack, NY 10960
PH (845) 727-7793

**FOR REFERENCE ONLY
CIVIL ENGINEER**
Boris Engineering, Surveying & Landscape Architecture, P.C.
3 Garrett Place
Camden, NY 10512
PH (845) 225-9690

Architect
PETER GISOLFI ASSOCIATES
Architects · Landscape Architects, LLP
566 Warburton Avenue, Hastings-on-Hudson, NY 10706
Phone: (914) 478-3677 · Fax: (914) 478-1600

Project Title
**CAMP KAUFMANN
GIRL SCOUTS OF
GREATER NEW YORK**
81 CAMP ROAD
HOLMES, NY 12531

Drawing Title
**ALUM. STOREFRONT
SYSTEM & DOOR SCHED.**

Seal & Signature	Date: 06/21/2021
	PROJECT No: 2005
	DRAWN BY: CS, RW, MK
	CHK BY: NL
	DWG No: A-900
	CADD FILE No: -
	W:2005 Girl Scouts of Greater NY

ALUMINUM STOREFRONT WINDOW SCHEDULE					
TYPE	SIZE (WxH)	FRAME TYPE	GLAZING	STOREFRONT SYSTEM	REMARKS
W-1	SEE ELEVATION	ALUM.	GL-2	KAWNEER TRIFAB VERSAGLAZE 45IT	ALUM. STOREFRONT WINDOW, SEE SPECS.
W-2	SEE ELEVATION	ALUM.	GL-2	KAWNEER TRIFAB VERSAGLAZE 45IT	ALUM. STOREFRONT WINDOW, SEE SPECS.
W-3	SEE ELEVATION	ALUM.	GL-2	KAWNEER TRIFAB VERSAGLAZE 45IT	ALUM. STOREFRONT WINDOW, SEE SPECS.
W-4	SEE ELEVATION	ALUM.	GL-2	KAWNEER TRIFAB VERSAGLAZE 45IT	ALUM. STOREFRONT WINDOW, SEE SPECS.
W-5	SEE ELEVATION	ALUM.	GL-2	KAWNEER TRIFAB VERSAGLAZE 45IT	ALUM. STOREFRONT WINDOW, SEE SPECS.
W-6	SEE ELEVATION	ALUM.	GL-2	KAWNEER TRIFAB VERSAGLAZE 45IT	ALUM. STOREFRONT WINDOW, SEE SPECS.
W-7	SEE ELEVATION	ALUM.	GL-2	KAWNEER TRIFAB VERSAGLAZE 45IT	ALUM. STOREFRONT WINDOW, SEE SPECS.
W-8	SEE ELEVATION	ALUM.	GL-2	KAWNEER TRIFAB VERSAGLAZE 45IT	ALUM. STOREFRONT WINDOW, SEE SPECS.
W-9	SEE ELEVATION	ALUM.	GL-2	KAWNEER TRIFAB VERSAGLAZE 45IT	ALUM. STOREFRONT WINDOW, SEE SPECS.
W-10	SEE ELEVATION	ALUM.	GL-2	KAWNEER TRIFAB VERSAGLAZE 45IT	ALUM. STOREFRONT WINDOW, SEE SPECS.
W-11	SEE ELEVATION	ALUM.	GL-2	KAWNEER TRIFAB VERSAGLAZE 45IT	ALUM. STOREFRONT WINDOW, SEE SPECS.
W-12	SEE ELEVATION	ALUM.	GL-2	KAWNEER TRIFAB VERSAGLAZE 45IT	ALUM. STOREFRONT WINDOW, SEE SPECS.
W-13	SEE ELEVATION	ALUM.	GL-2	KAWNEER TRIFAB VERSAGLAZE 45IT	ALUM. STOREFRONT WINDOW, SEE SPECS.
W-14	SEE ELEVATION	ALUM.	GL-2	KAWNEER TRIFAB VERSAGLAZE 45IT	ALUM. STOREFRONT WINDOW, SEE SPECS.
W-15	SEE ELEVATION	ALUM.	GL-2	KAWNEER TRIFAB VERSAGLAZE 45IT	ALUM. STOREFRONT WINDOW, SEE SPECS.
W-16	SEE ELEVATION	ALUM.	GL-2	KAWNEER TRIFAB VERSAGLAZE 45IT	ALUM. STOREFRONT WINDOW, SEE SPECS.
W-17	SEE ELEVATION	ALUM.	GL-2	KAWNEER TRIFAB VERSAGLAZE 45IT	ALUM. STOREFRONT WINDOW, SEE SPECS.
W-18	SEE ELEVATION	ALUM.	GL-2	KAWNEER TRIFAB VERSAGLAZE 45IT	ALUM. STOREFRONT WINDOW, SEE SPECS.

ARCHITECTURAL LOUVER SCHEDULE					
TYPE	SIZE (WxH)	MODEL	DESCRIPTION	SCREEN	REMARKS
L-1	SEE ELEVATION	AIROLITE K6844	ALUMINUM DRAINABLE LOUVER	YES	COORDINATE WITH MECHANICAL DRAWINGS
L-2	SEE ELEVATION	ARCH GRILLE AG10	ALUMINUM TRANSFER GRILLE	NO	PROVIDE WITH 'H' FRAME. POWDER COAT TO MATCH WALL COLOR
L-3	SEE ELEVATION	AIROLITE K6844	ALUMINUM DRAINABLE LOUVER	YES	COORDINATE WITH MECHANICAL DRAWINGS
L-3a	SEE ELEVATION	AIROLITE K6844	ALUMINUM DRAINABLE LOUVER	YES	WITHIN DOOR TRANSOM. COORDINATE WITH MECHANICAL DRAWINGS
L-4	SEE ELEVATION	AIROLITE K6844	ALUMINUM DRAINABLE LOUVER	YES	COORDINATE WITH MECHANICAL DRAWINGS
L-5	SEE ELEVATION	AIROLITE K6844	ALUMINUM DRAINABLE LOUVER	YES	COORDINATE WITH MECHANICAL DRAWINGS
L-6	SEE ELEVATION	AIROLITE K6844	ALUMINUM DRAINABLE LOUVER	YES	WITHIN DOOR TRANSOM. COORDINATE WITH MECHANICAL DRAWINGS
L-7	SEE ELEVATION	AIROLITE K6844	ALUMINUM DRAINABLE LOUVER	YES	COORDINATE WITH MECHANICAL DRAWINGS

L-1 ARCHITECTURAL LOUVER
SCALE: 3/8"=1'-0"

L-2 ARCHITECTURAL GRILLE (AIR RETURN)
SCALE: 3/8"=1'-0"

L-3 ARCHITECTURAL LOUVER (ECONOMIZER RELIEF LOUVER)
SCALE: 3/8"=1'-0"

L-4 ARCHITECTURAL LOUVER
SCALE: 3/8"=1'-0"

L-5 ARCHITECTURAL LOUVER
SCALE: 3/8"=1'-0"

L-6 ARCHITECTURAL LOUVER
SCALE: 3/8"=1'-0"

L-7 ARCHITECTURAL LOUVER
SCALE: 3/8"=1'-0"

L-5a ARCHITECTURAL LOUVER DOOR TRANSOM
SCALE: 3/8"=1'-0"

W-1 ALUM STOREFRONT WINDOW
SCALE: 3/8"=1'-0"

W-2 ALUM STOREFRONT WINDOW
SCALE: 3/8"=1'-0"

W-3 ALUM STOREFRONT WINDOW
SCALE: 3/8"=1'-0"

W-4 ALUM STOREFRONT WINDOW
SCALE: 3/8"=1'-0"

W-5 ALUM STOREFRONT WINDOW
SCALE: 3/8"=1'-0"

W-6 ALUM STOREFRONT WINDOW
SCALE: 3/8"=1'-0"

W-7 ALUM STOREFRONT WINDOW
SCALE: 3/8"=1'-0"

W-8 ALUM STOREFRONT WINDOW
SCALE: 3/8"=1'-0"

W-9 ALUM STOREFRONT WINDOW
SCALE: 3/8"=1'-0"

W-10 ALUM STOREFRONT WINDOW
SCALE: 3/8"=1'-0"

W-11 ALUM STOREFRONT WINDOW
SCALE: 3/8"=1'-0"

W-12 ALUM STOREFRONT WINDOW
SCALE: 3/8"=1'-0"

W-13 ALUM STOREFRONT WINDOW
SCALE: 3/8"=1'-0"

W-14 ALUM STOREFRONT WINDOW
SCALE: 3/8"=1'-0"

W-15 ALUM STOREFRONT WINDOW
SCALE: 3/8"=1'-0"

W-16 ALUM STOREFRONT WINDOW
SCALE: 3/8"=1'-0"

W-17 ALUM STOREFRONT WINDOW
SCALE: 3/8"=1'-0"

W-18 ALUM STOREFRONT WINDOW
SCALE: 3/8"=1'-0"

N.T.S.

GLAZING KEY:
GL-1 FIRE RATED GLASS
GL-2 1" INSULATED GLASS, TEMPERED*
GL-3 1/2" TEMPERED GLASS

* OUTDOOR LITE SHALL BE 1/2" CLEAR TEMPERED GLASS WITH SOLARBAN 60 COATING ON THE #2 SURFACE. THE 1/2" AIRSPACE SHALL BE 95% ARGON AND 5% AIR MIX. THE INDOOR LITE SHALL BE 1/2" CLEAR TEMPERED WITH AN ENERGY SELECT 73 COATING ON THE #4 SURFACE. THE PERFORMANCE RATINGS ARE AS FOLLOWS:
U = 0.20, SHGC = 0.37, VTL = 66%

07/08/2022 ADDENDUM #2

07/01/2022 ADDENDUM #1

06/24/2022 ISSUED FOR BID

No.	Date	Revision
1.		

STRUCTURAL ENGINEER
D.R. Pilla Consulting Engineers
143 Main Street
Nyack, NY 10960
PH (845) 727-7793

M.E.P. ENGINEER
Tiefen Veragac Consulting Engineers
69 Purchase Street,
Rye, NY 10580
PH (914) 967-9505

FOR REFERENCE ONLY
CIVIL ENGINEER
Basic Engineering, Surveying &
Landscape Architecture, P.C.
3 Garrett Place
Camel, NY 10512
PH (845) 225-9600

Architect
PETER GISOLFI ASSOCIATES
Architects · Landscape Architects, LLP
566 Warburton Avenue, Hastings-on-Hudson, NY 10706
Phone: (914) 478-3677 · Fax: (914) 478-1600

Project Title
**CAMP KAUFMANN
GIRL SCOUTS OF
GREATER NEW YORK**
81 CAMP ROAD
HOLMES, NY 12531

Drawing Title
WINDOW SCHEDULE

Seal & Signature

Date: 06/21/2021

PROJECT No: 2005

DRAWN BY: CS, RW, MK

CHK BY: NL

DWG No:

A-901

CADD FILE No:

W:\2005 Girl Scouts of Greater NY