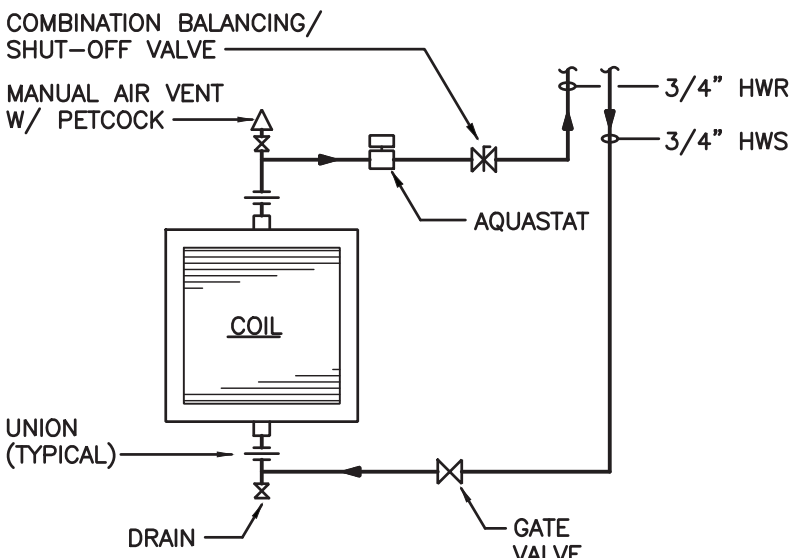
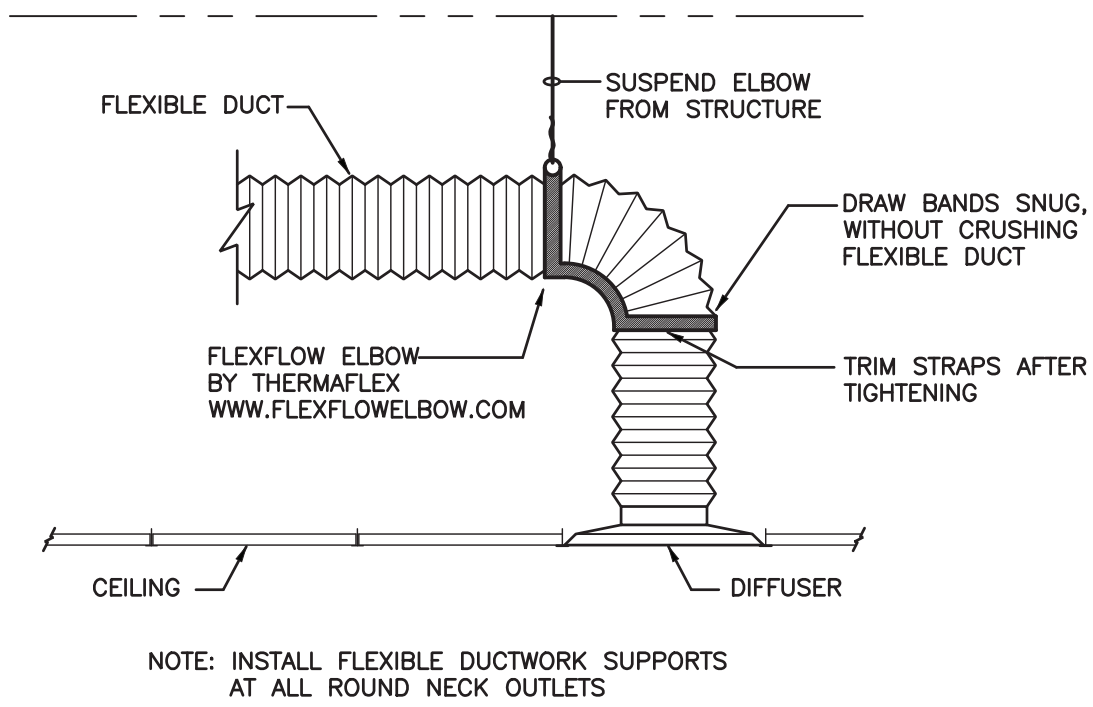


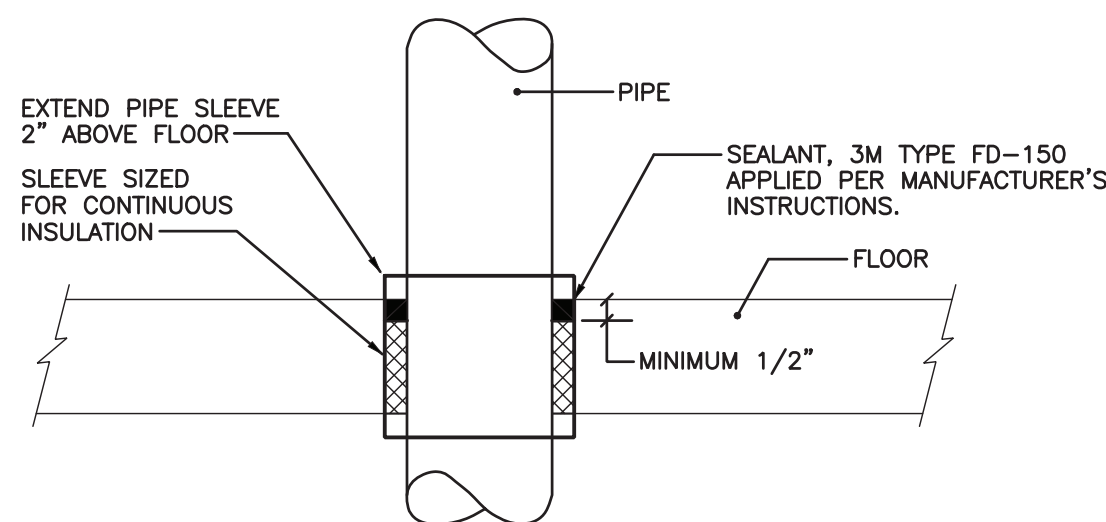
5 WALL HEATER PIPING
H-5 NOT TO SCALE



4 UNIT HEATER PIPING
H-5 NOT TO SCALE



3 FLEXIBLE DUCT CONNECTION TO AIR OUTLET
H-5 NOT TO SCALE



2 FLOOR PENETRATION SEALING DIAGRAM
H-5 NOT TO SCALE

AIR HANDLING UNIT SCHEDULE																		NOTES	
AH No.	MFR	MODEL	CFM STD. AIR		EXT. S.P.	TOT.* S.P.	FAN H.P.	FILTERS	COOLING COIL DATA						HEATING COIL DATA — W/ 150°F WATER				
			MIN. OUTSIDE	TOTAL					ENT. (DB)	ENT. (WB)	SENSIBLE BTU / HR.	TOTAL BTU / HR.	FACE AREA FT.2	** G.P.M.	ENT. AIR °F	LV. AIR °F	BTU / HR.		G.P.M.
AHU#1 & #2	TRANE	CSAA012	1500	6000	1.5	4.05	7.5	SEE ③	80	67	105,000	187,000	12.11	—	75	98	149,000		10
<div>NOTE: 1. HORIZONTAL FLOOR MOUNTED UNIT WITH INTERNAL VIBRATION INSULATION. 2. UNIT TO HAVE FAN WITH MOTOR SUITABLE FOR VFD, COOLING/HEATING HEAT PUMP COIL, HOT WATER HEATING COIL, MIXING BOX. 3. 2" DISPOSABLE PRE FILTER, 4" MERV 13 CARTRIDGE FILTER</div>																			

NOTE: 1. HORIZONTAL FLOOR MOUNTED UNIT WITH INTERNAL VIBRATION INSULATION.
2. UNIT TO HAVE FAN WITH MOTOR SUITABLE FOR VFD, COOLING/HEATING HEAT PUMP COIL, HOT WATER HEATING COIL, MIXING BOX.
3. 2" DISPOSABLE PRE FILTER, 4" MERV 13 CARTRIDGE FILTER

INDOOR HEAT PUMP UNIT SCHEDULE													
AC#	MFR.	MODEL	OUTDOOR UNIT	SIZE	TYPE	CAPACITY (MBH) COOLING/HEATING	SIZE (HxWxD)	REFRIG. PIPING LIQUID/GAS	ELECTRICAL 208V/1Ø MCA/MOCP (A)	CFM	OUTSIDE AIR (CFM)	ROOM	NOTES
AC#1	TRANE	TPVFYP054AM141A	HP#1	54	MULTI-POSITION AIR HANDLING UNIT	54/60	25x21-¾x59-½	¾ / ¾	5.6 / 15	1500	100	LOBBY	
AC#2		TPVFYP012AM141A		12		12/13.5	17x21-¾x50-½	¼ / ½	3.0 / 15	350	30	INSTRUCTIONAL 105	
AC#3		TPVFYP018AM141A		18		18/20	17x21-¾x50-¾	↓	↓	550	150	INSTRUCTIONAL 106	
AC#4				↓		↓	↓	↓	↓	↓	↓	INSTRUCTIONAL 122	
AC#5		TPVFYP030AM141A		30		30/34	21x21-¾x54-¼	¾ / ¾	4.1 / 15	900	300	INSTRUCTIONAL 108	
AC#6		↓	↓	↓		↓	↓	↓	↓	↓	↓	INSTRUCTIONAL 110	
AC#7		↓	↓	↓		↓	↓	↓	↓	↓	↓	INSTRUCTIONAL 113	
AC#8		TPEVFYP072MH141A	HP#4	72	CEILING CONCEALED	72/80	18-¾x49-¾x44-¾	¾ / ¾	7.7 / 15	2000	750	KITCHEN	
AC#9	↓	↓	↓	↓	↓	↓	↓	↓	↓	↓	↓	KITCHEN	

NOTE: 1. PROVIDE WITH CONDENSATE PUMPS AND WIFI THERMOSTATS.

HEAT PUMP UNIT SCHEDULE									
HP No.	MFR	MODEL	EER/COP	CAPACITY (MBH) COOLING/HEATING	SIZE (HxWxD)	REFRIG. PIPING LIQUID/GAS	WEIGHT (LBS)	ELECTRICAL 208V/3P MCA/MOCP (A)	NOTE
HP#1	TRANE	TURYE1923BN40A	12.7/3.66	192/215	(2)71-¾"x48-¾"x29-¾"	¾ / 1-¾	(2)613	31,31/45,45	TWO MODULES W/ HEAT RECOVERY
HP#2	↓	TUHYE1923BN40A	13/3.75	192/216	↓	¾ / 1-¾	(2)622	↓	↓
HP#3	↓	↓	↓	↓	↓	↓	↓	↓	↓
HP#4	↓	TUHYE1203AN40A	13.3/3.8	120/135	↓	¾ / 1-¾	633	40/60	ONE MODULE

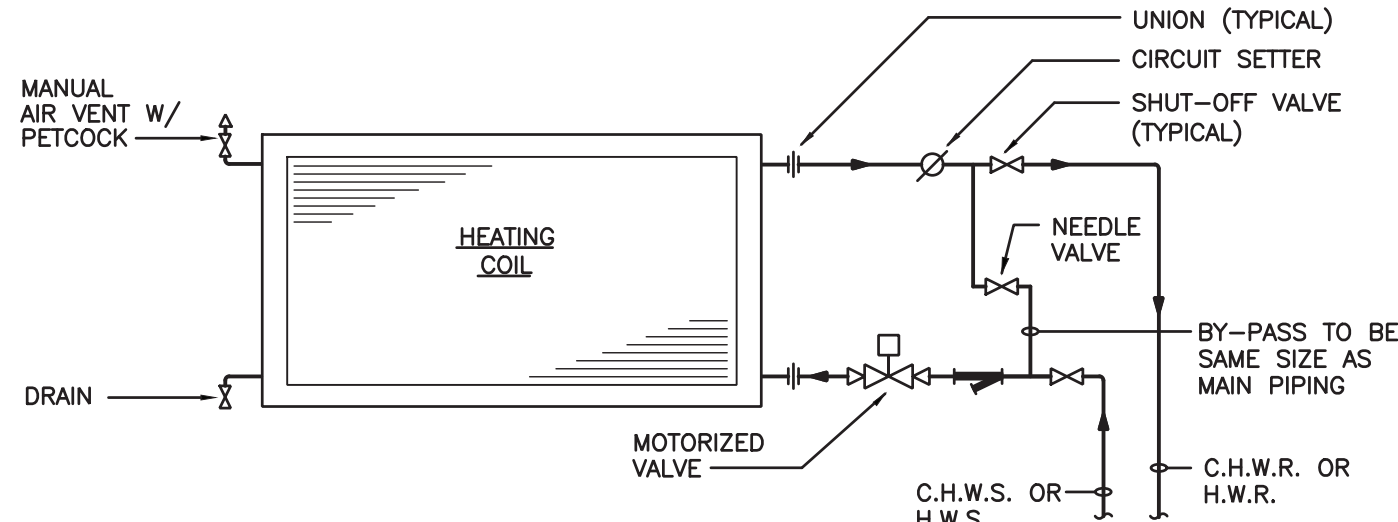
NOTE: 1. PROVIDE DIGITAL TOUCH SCREEN CENTRAL CONTROLLER.

H E A T I N G C O I L S C H E D U L E													
HEATING COIL No.	MFR.	TYPE	CFM.	AIR TEMP		TOTAL BTU/HR LOAD	GPM AT 150'	WATER TEMP.		COIL FACE AREA FT.	NOM. HxL	DUCT CONN. SIZE	NOTES
				ENT.	LVG.			ENT.	LVG.				
HC#1 & #2	TRANE	HOT WATER	6000	75	98	149,000	5	150	120	11.25	30x54	UNIT MOUNTED	NOTE 1
HC#3	↓	↓	1500	75	98	37,300	1.5	150	120	3	24x18	24x18	NOTE 2
NOTE: 1. COIL FURNISHED WITH AIR HANDLING UNIT 2. COIL TO BE FLAWMED TYPE WITH COOPER TUBE ALUMINUM FIN													

NOTE: 1. COIL FURNISHED WITH AIR HANDLING UNIT
2. COIL TO BE FLAWED TYPE WITH COOPER TUBE ALUMINUM FIN

EXHAUST FAN SCHEDULE									
EXHAUST FAN No.	MFR.	MODEL	C.F.M.	S.P.	H.P.	CURB TYPE	CONTROLS	NOTES	
EF#1	LOREN COOK	90SQ15D	600	0,375	1/6	-	TIME CLOCK	NOTE 1	
EF#2	LOREN COOK	GC-124	75	0,250	64W	-	MOTION SENSOR	NOTE 2	
EF#3	LOREN COOK	90SQ12D	525	0,325	1/6	-	INTERLOCK WITH DISH WASHER	NOTE 1	
EF#4	LOREN COOK	180VB8	3500	1,25	1 1/6	RCG28	HOOD CONTROLLER	NOTE 3	

NOTE: 1. PROVIDE WITH VIBRATION ISOLATORS FOR SUSPENDED VERTICAL INSTALLATION, VARIABLE SPEED SWITCH MOUNTED ABOVE CEILING FOR BALANCING, WITH INLET/OUTLET COMPANION FLANGES, BACK DRAFT DAMPER, INSULATED ALUMINUM HOUSING.
2. PROVIDE WITH VIBRATION ISOLATORS FOR HORIZONTAL MOUNTING, BACK DRAFT DAMPER, VARIABLE SPEED SWITCH.
3. PROVIDE WITH GALVANIZED VENTED EXTENSION #VE-29 AUTOMATIC BELT TENSIONER, HINGED BASE, GREASE TROUGH, EXTENDED LUBE LINES, WITH PREMIUM MOTOR FOR VFD OPERATION.



1 HEATING COIL PIPING
H-5 NOT TO SCALE

CEILING DIFFUSER SCHEDULE						
CEILING DIFF. No.	MFR.	MODEL	CFM.	SIZE FACE	CONNECTION	NOTES
CD#1 & #2	PRICE	APDN	250	16x16	10"ø	2-WAY CORNER THROW
CD#3	PRICE	APDN	350	24x24	10x10	2-WAY OPPOSITE THROW
CD#4&5	PRICE	APDN	350	24x24	12x12	2-WAY CORNER THROW
CD#6	PRICE	AMD	50	6x6	6x6	4-WAY THROW ②
CD#7	PRICE	AMD	100	6x6	6x6	2-WAY OPPOSITE THROW
CD#8-#10	PRICE	APDN	500	24x24	12x12	3-WAY THROW
CD#11-#12	PRICE	APDN	300	24x24	10x10	4-WAY THROW
CD#13-#14	PRICE	APDN	400	24x24	12x12	3-WAY THROW
CD#15	PRICE	APDN	300	24x24	10x10	3-WAY THROW
CD#16-#17	PRICE	APDN	200	24x24	8x8	3-WAY THROW
CD#18	PRICE	APDN	100	24x24	6x6	2-WAY THROW
CD#19	PRICE	APDN	200	24x24	8x8	4-WAY THROW
CD#20	PRICE	APDN	100	24x24	6x6	3-WAY THROW

NOTE: 1. DIFFUSERS TO BE EXTRUDED ALUMINUM PERFORATED CONSTRUCTION FOR SURFACE MOUNTING. PROVIDE WITH VOLUME DAMPERS
2. FORMED ALUMINUM DIFFUSER WITH VOLUME DAMPER.

RETURN EXHAUST REGISTER SCHEDULE					
RETURN EXH. No.	MFR.	MODEL	CFM.	SIZE	NOTES
REG#1 & #2	PRICE	635DAL	300	14X14	NOTE 1
REG#3 & #4	↓	↓	550	16X16	NOTE 1
REG#5	↓	↓	350	12X12	NOTE 1
REG#6 & #7	↓	↓	275	14X14	↓
REG#8 & #9	CONSTRUCTION SPECIALTY	2282	6,000	84X36	NOTE 2
REG#10	PRICE	ATG1	75	24X8	NOTE 3
REG#11-#13	↓	635DAL	600	14X14	NOTE 1
REG#14 & #15	↓	ATG1	1,250	24X24	NOTE 3
REG#16 & #17	↓	635DAL	↓	22X22	NOTE 1

NOTE: 1. EXTRUDED ALUMINUM LOUVER TYPE, 45° FIXED BLADES, 1/2" SPACING, BLADES PARALLEL TO LONG DIMENSION, PROVIDE CLEAR ANODIZED FINISH.
2. SIGHT PROOF 2" WIDE AIR CONDITIONING LOUVER COLOR AS SELECTED BY ARCHITECT.
3. SIGHT PROOF DOOR GRILLE POWDER COAT FINISH COLOR AS SELECTED BY ARCHITECT.

FLOOR REGISTER SCHEDULE					
SUPPLY REG. No.	MFR.	MODEL	CFM.	SIZE	NOTES
FR#1-#6	PRICE	LBPH15A	250	18x6	NOTE 1 & 2
FR#7-#22	PRICE	LBPH15A	750	36x8	↓

NOTE: 1. BARSTOCK ALUMINUM REGISTER ANODIZED FINISH
2. PROVIDE WITH NARROW FACE FACE BORDER (125)
3. PROVIDE WITH VOLUME DAMPER.

SUPPLY REGISTER SCHEDULE					
SUPPLY REG. No.	MFR.	MODEL	CFM.	SIZE	NOTES
SR#1-#6	PRICE	620DAL	450	16X8	NOTES 1&2

NOTE: 1. EXTRUDED ALUMINUM, REVERSIBLE CORE SIDE WALL SUPPLY REGISTER WITH ALUMINUM DAMPER, 1" FLAT BORDER AND DIRECTIONAL VANES, PROVIDE CLEAR ANODIZED FINISH.
2. 45° THROW.

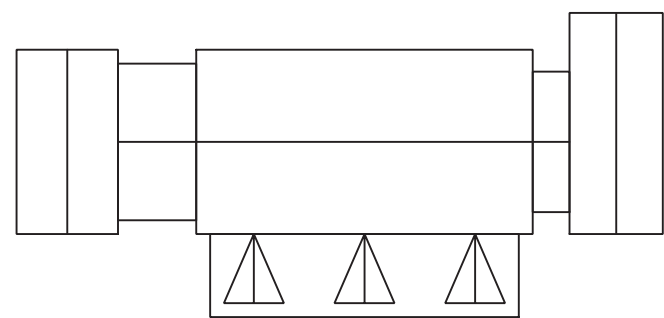
WALL HEATER SCHEDULE (BASED ON 190°F ENTERING WATER)								
WALL HTR. No.	MFR.	MODEL	PHASE	VOLTS	WATTS	BTU / HR.	G.P.M.	NOTES
WH#1-#6	SMITHS	PWU4/6	1	120	100	4,500	1	NOTE 1

NOTE: 1. RECESSED UNIT 19¾"Hx21"Wx3¾"D.

UNIT HEATER SCHEDULE								
UNIT HTR. No.	MFR.	MODEL	H.P.	R.P.M.	C.F.M.	BTU / HR.	G.P.M.	NOTES
UH#1 & #2	STERLING	VS-62L	1/20	1,550	1,200	20,000	2	NOTE 1

NOTE: 1. PROVIDE WITH HORIZONTAL AND VERTICAL DEFLECTION LOUVER.

KEY PLAN



N.T.S.



I. 06/24/2022 Issue for Bid

No. Date Revision

STRUCTURAL ENGINEER
D.R. Pilla Consulting Engineers
143 Main Street
Nyack, NY 10960
PH (845) 727-7793

FOR REFERENCE ONLY
CIVIL ENGINEER
Ditto Engineering, Surveying & Landscape Architecture, P.C.
3 Green Place
Carmel, NY 10512
PH (845) 225-9690

M.E.P. ENGINEER
Tajen Venegas Consulting Engineers
68 Purchase Street
Rye, NY 10580
PH (914) 967-9505

KITCHEN CONSULTANT
Cleverger Frable Lavallo, Inc.
39 Westmedford Avenue, 2nd Floor
White Plains, NY 10606
PH (914) 997-9660

Architect
PETER GISOLFI ASSOCIATES
Architects · Landscape Architects, LLP
566 Warburton Avenue, Hastings-on-Hudson, NY 10706
Phone: (914) 478-3677 · Fax: (914) 478-1600

Project Title
CAMP KAUFMANN
GIRL SCOUTS OF
GREATER NEW YORK
81 CAMP ROAD
HOLMES, NY 12531

Drawing Title
HVAC
SCHEDULES & DETAILS

Seal & Signature
Date: 06/21/2021
PROJECT No: 2005
DRAWN BY: CS, RW, MK
CHK BY: NL
DWG No:
H-5
CADD FILE No:
W:2005 Girl Scouts of Greater NY