

A

B

C

D

E

F

A

B

C

D

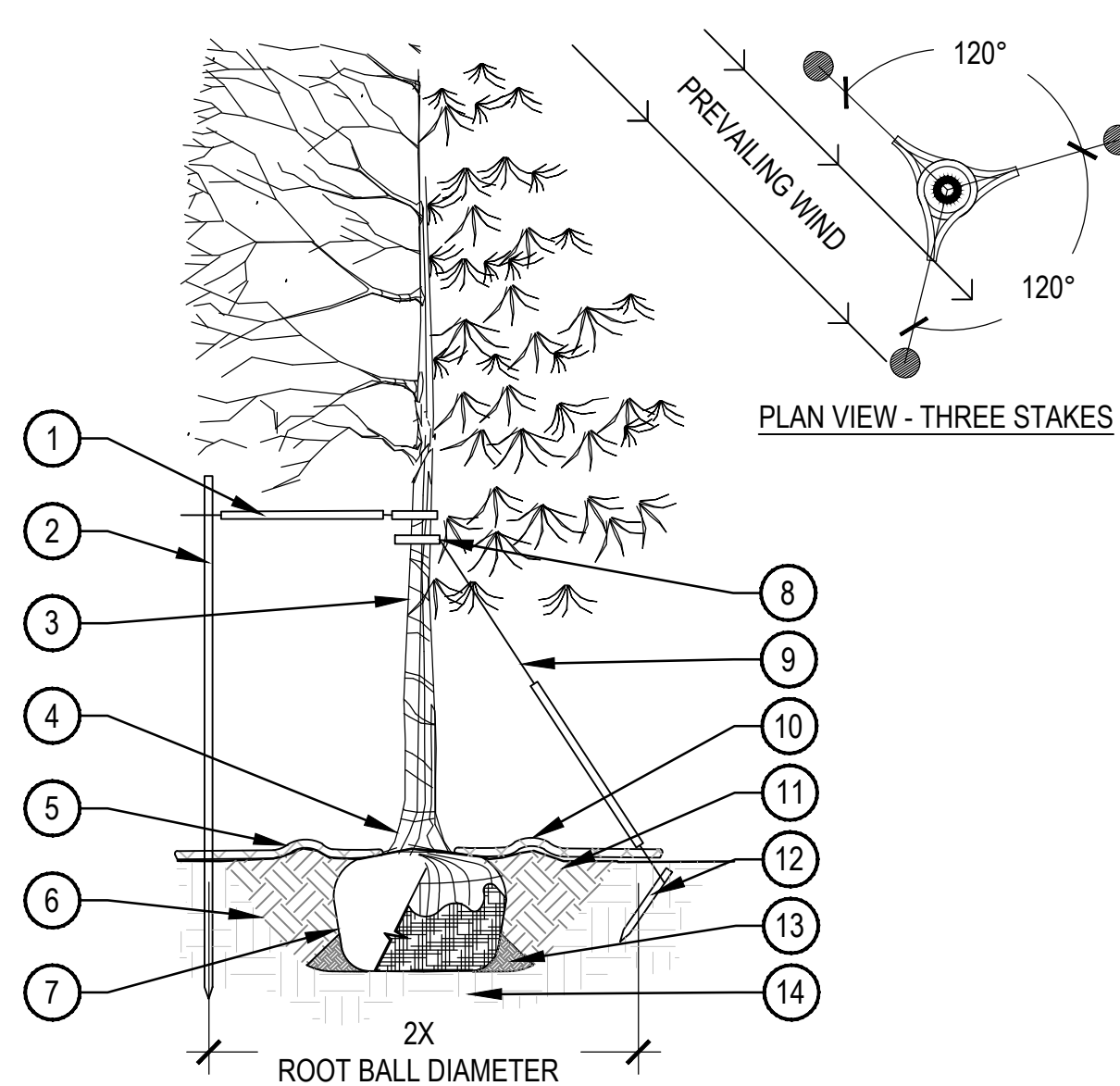
E

F

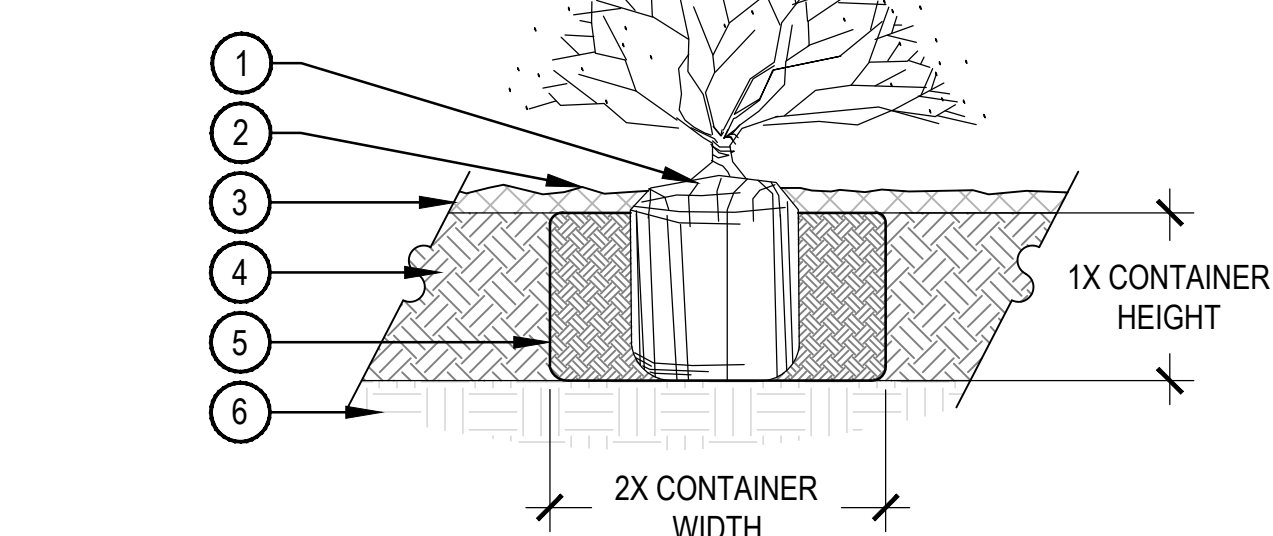
5/14/2020 10:10:28 AM

BM 360.054-18-824 Landscape Entire Facility/54-18-824 Landscape Entire Facility.rvt

- PRUNING NOTES:**
- ALL PRUNING SHALL COMPLY WITH ANSI A300 STANDARDS.
 - DO NOT HEAVILY PRUNE THE TREE AT PLANTING. PRUNE ONLY CROSSOVER LIMBS, CO-DOMINANT LEADERS AND BROKEN BRANCHES. SOME INTERIOR TWIGS AND LATERAL BRANCHES MAY BE PRUNED. HOWEVER, DO NOT REMOVE THE TERMINAL BUDS OF BRANCHES THAT EXTEND TO THE EDGE OF THE CROWN.
- STAKING NOTES:**
- STAKE TREES PER FOLLOWING SCHEDULE, THEN REMOVE AT END OF FIRST GROWING SEASON.
 - 1-1/2" CALIPER SIZE - MIN. 2 STAKES - ONE ON N.W. SIDE, ONE ON S.W. SIDE (OR PREVAILING WIND SIDE AND 180° FROM THAT SIDE).
 - 1-1/2" - 3" CALIPER SIZE - MIN. 2 STAKES - ONE ON N.W. SIDE, ONE ON S.W. SIDE (OR PREVAILING WIND SIDE AND 180° FROM THAT SIDE).
 - 3" CALIPER SIZE AND LARGER - 3 STAKES PER DIAGRAM.
 - WIRE OR CABLE SHALL BE MIN. 12 GAUGE. TIGHTEN WIRE OR CABLE ONLY ENOUGH TO KEEP FROM SLIPPING. ALLOW FOR SOME TRUNK MOVEMENT. NYLON STRAPS SHALL BE LONG ENOUGH TO ACCOMMODATE 1-1/2" OF GROWTH AND BUFFER ALL BRANCHES FROM WIRE.



- PLACE MINIMUM 1/2" PVC PIPE AROUND EACH WIRE. EXPOSED WIRE SHALL BE MAXIMUM 2" EACH SIDE
- 6"-0" UNTREATED WOOD POST, MINIMUM 1.5" DIAMETER, ALL SHALL BE DRIVEN OUTSIDE ROOTBALL AND IN UNDISTURBED SOIL
- TREE WRAP TO BE INSTALLED ONLY FROM OCTOBER 1 THROUGH APRIL 30, DECIDUOUS ONLY, WRAP FROM BASE OF TRUNK TO BOTTOM LIMB
- PLANT TREE SO THAT TOP MOST MAJOR ROOT IS 1'-2" ABOVE FINISHED GRADE
- 2'-0" RADIUS MULCH RING, VENTERED ON TRUNK, 3" DEPTH, DO NOT PLACE MULCH IN CONTACT WITH TREE TRUNK, FINISHED GRADE REFERENCES TOP OF MULCH
- 1:1 SLOPE ON SIDES OF PLANTING HOLE
- ROPES AT TOP OF ROOTBALL SHALL BE CUT, REMOVE TOP 1/3 OF BURLAP, NON-BIODEGRADABLE MATERIAL SHALL BE TOTALLY REMOVED
- GROMMETED NYLON STRAPS
- GALVANIZED WIRE, MINIMUM 12 GAUGE CABLE, TWIST WIRE ONLY TO KEEP FROM SLIPPING
- 4-6" HIGH WATER SAUCER IN NON-TURF AREAS
- BACKFILL WITH BLEND OF EXISTING SOIL AND A MAXIMUM 20% BY VOLUME, ORGANIC MATERIAL, WATER THOROUGHLY WHEN BACKFILLING
- 2'-0" STEEL T-POST, ALL SHALL BE DRIVEN BELOW GRADE AND OUTSIDE ROOTBALL IN UNDISTURBED SOIL
- PLACE SOIL AROUND ROOT BALL FIRMLY, DO NOT COMPACT OR TAMP, SETTLE SOIL WITH WATER TO FILL ALL AIR POCKETS
- PLACE ROOT BALL ON UNDISTURBED SOIL TO PREVENT SETTLEMENT



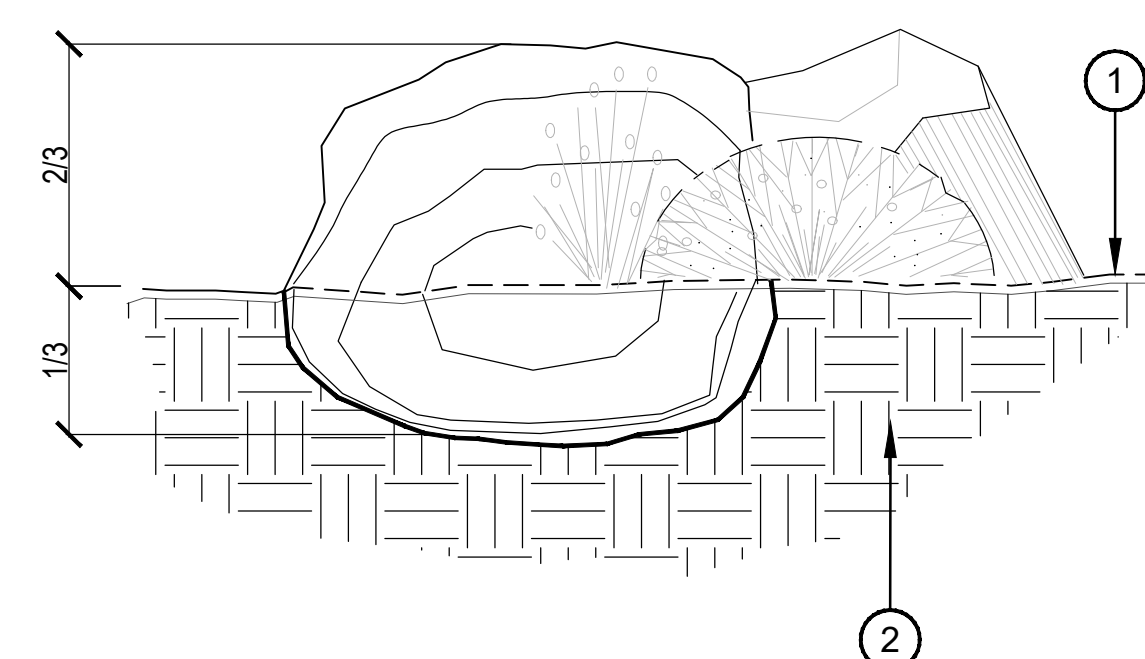
- NOTE:**
- BROKEN OR CRUMBLING ROOT-BALLS WILL BE REJECTED.
 - CARE SHOULD BE TAKEN NOT TO DAMAGE THE SHRUB OR ROOT-BALL WHEN REMOVING IT FROM ITS CONTAINER.
 - ALL JUNIPERS SHOULD BE PLANTED SO THE TOP OF THE ROOT-BALL OCCURS ABOVE THE FINISH GRADE OF THE MULCH LAYER.
 - DIG PLANT PIT TWICE AS WIDE AND AS HIGH AS THE CONTAINER.
 - PRUNE ALL DEAD OR DAMAGED WOOD PRIOR TO PLANTING, DO NOT PRUNE MORE THAN 20% OF LIMBS.

- DEDUCTIVE ALTERNATES:**
- (DEDUCTIVE ALTERNATES ARE CASCADING AND MUST BE EXERCISED IN THE ORDER PRESENTED) FOR DETAILS OF EACH DEDUCTIVE SEE COVER SHEET ON G1000
- DEDUCTIVE ALTERNATE #1: REDUCE WATER AND ICE SHIELD COVERAGE
- DEDUCTIVE ALTERNATE #2: ELIMINATE TUNNEL (EAST LEG)
- DEDUCTIVE ALTERNATE #3: ELIMINATE FAUX WINDOWS AT CLEARSTORY
- DEDUCTIVE ALTERNATE #4: ELIMINATE WORK AT B6 CORRIDOR
- DEDUCTIVE ALTERNATE #5: ELIMINATE CONCRETE
- DEDUCTIVE ALTERNATE #6: ELIMINATE LANDSCAPE
- DEDUCTIVE ALTERNATE #7: REDUCE PLATFORM AT CHILLER
- DEDUCTIVE ALTERNATE #8: ELIMINATE NVR SECURITY
- DEDUCTIVE ALTERNATE #9: ELIMINATE LARGE PORCH
- DEDUCTIVE ALTERNATE #10: ELIMINATE SMALL PORCH A
- DEDUCTIVE ALTERNATE #11: ELIMINATE SMALL PORCH B
- DEDUCTIVE ALTERNATE #12: ELIMINATE ENTRANCE CANOPY
- DEDUCTIVE ALTERNATE #13: ELIMINATE FENCE/FAUX ROOFS AT RESIDENT ROOMS
- DEDUCTIVE ALTERNATE #14: ELIMINATE PATIENT LIFTS TRACK EXTENSION
- DEDUCTIVE ALTERNATE #15: ELIMINATE POROUS ASPHALT / PARKING / PORTION OF DRIVE ENTRANCE
- DEDUCTIVE ALTERNATE #16: ELIMINATE EXTERIOR SIGNAGE

DEDUCTIVE ALTERNATE #6

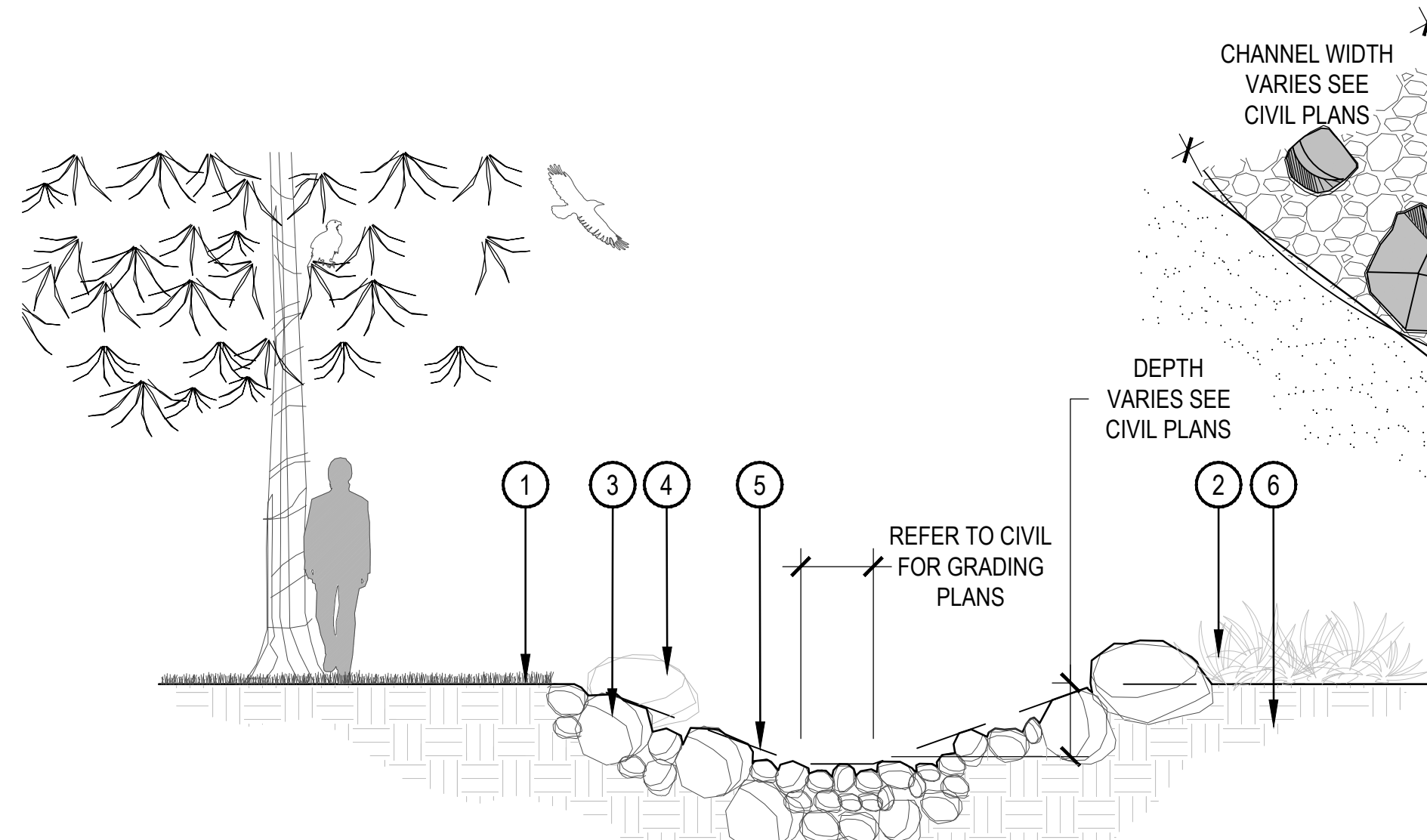
B1 TREE PLANTING DETAIL

B6 SHRUB PLANTING



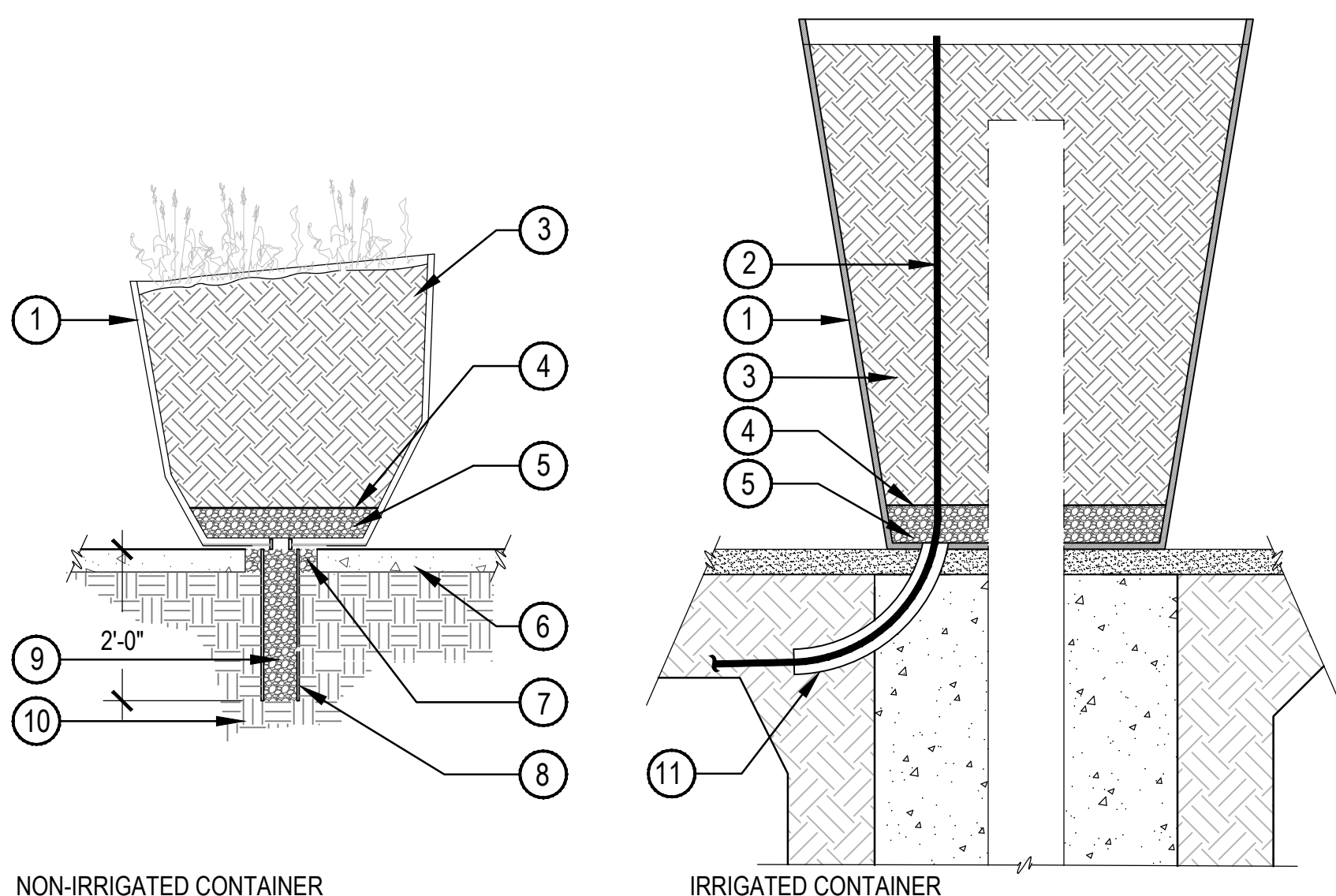
- NOTES:**
- PLACE BOULDER INTO GROUND SO THAT 1/2 OF THE BOULDER IS BELOW FINISH GRADE.
 - DO NOT PLACE BOULDER DIRECTLY ONTO GRADE LEVEL, NOR SHOULD TOPSOIL OR ROCK MULCH BE ADDED TO BASE OF BOULDER TO ACHIEVE SETTING DEPTH.
 - WATER SETTLE AND COMPACT BACKFILL.

D1 BOULDER PLACEMENT



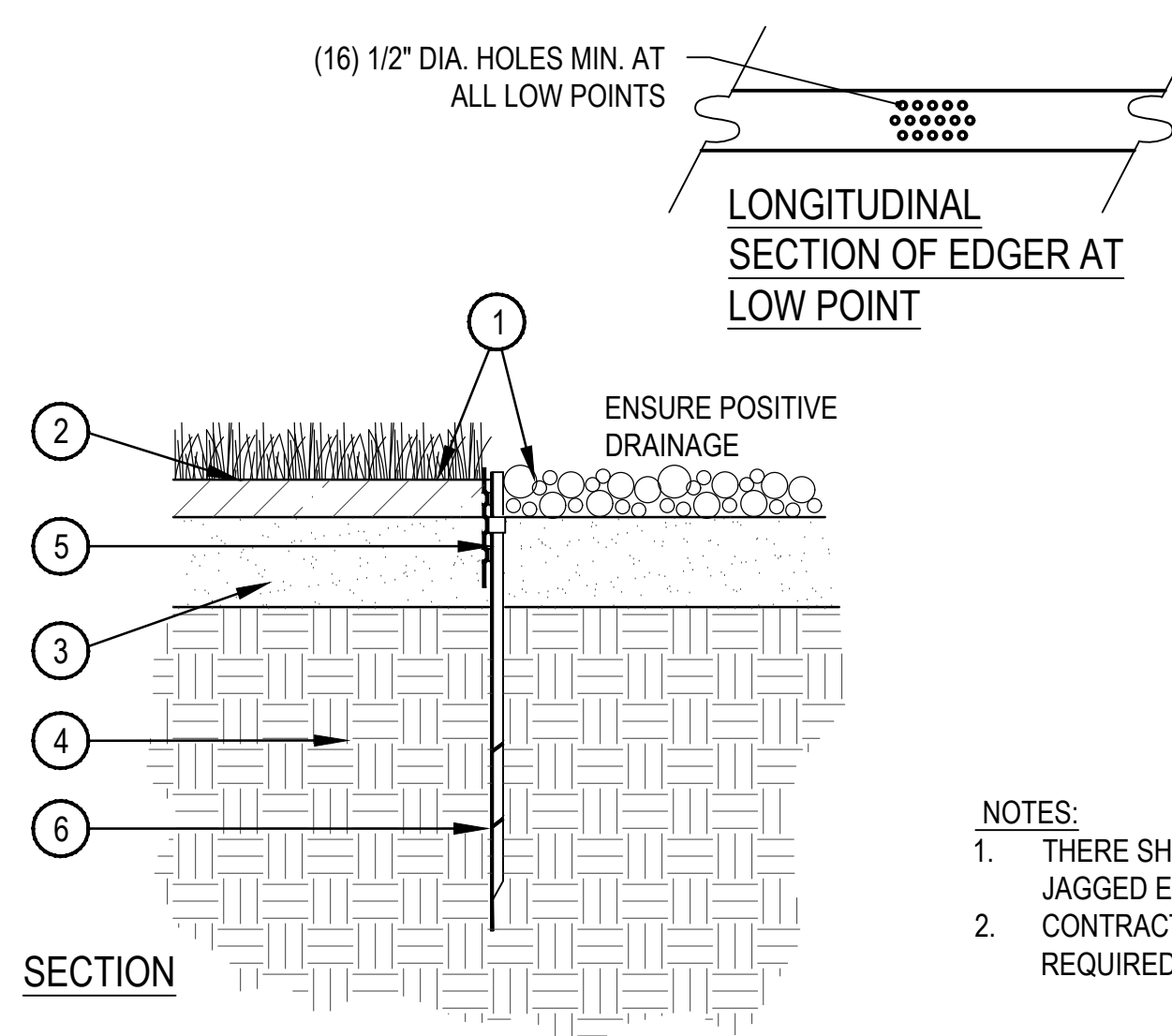
- NOTES:**
- CONTRACTOR SHALL FOLLOW CIVIL GRADING PLANS AND ON LANDSCAPE PLAN SHEET LP101. CONTRACTOR SHALL INSTALL VARIOUS SIZED ROCK AND BOULDERS IN A MANNER THAT MIMICS A NATURAL ROCKED DRAINAGE CHANNEL.
 - ERODED CHANNELS NOT DELINEATED TO BE ROCKED ON THESE PLANS SHALL BE BLOCKED OFF BY FILLING WITH ROCK AND SOIL. COMPACT SOIL TO SURROUNDING SOIL DENSITY AND HAND PLACE ROCK AND BOULDERS IN NATURALISTIC CLUSTERS.
 - CONTACT LANDSCAPE ARCHITECT AT THE BEGINNING OF CONSTRUCTION TO COORDINATE EXPECTATIONS.
 - CONTRACTOR SHALL FINE GRADE AND RESEED ALL AREAS DISTURBED AT EDGE OF RAIN GARDEN WITH TURF MIX.

D3 RAIN GARDEN



- NON-IRRIGATED CONTAINER**
- NOTE:**
- CONTRACTOR SHALL COORDINATE SLEEVE INSTALLATION AND KNOCK OUT BOX LOCATIONS PRIOR TO PAVING INSTALLATION.
 - ALL POTS LATERALS TO BE INSTALLED AND PRESSURE TESTED PRIOR TO PAVING INSTALLATION.
 - ALL POTS SHALL BE INTERNALLY SEALED BY CONTRACTOR.
 - BACKFILL WITH PREPARED MIX. (DO NOT UTILIZE MATERIAL WITH IRON SUPPLEMENTS).
- IRRIGATED CONTAINER**

- DECORATIVE POT REFER TO SITE FURNISHINGS AMENITY SCHEDULE SHEET LP100
- IRRIGATION TO POT - REFER TO DETAIL F1/LP302
- SOIL MIX
- LANDSCAPE FILTER FABRIC
- 3/4" GRAVEL DRAIN ROCK - 6" DEPTH
- CONCRETE PAVING, REFER TO LANDSCAPE PLAN SHEET LP101
- CONCRETE KNOCK OUT IN PAVING, FILL WITH PEA GRAVEL TO TOP OF CONCRETE RE
- 6" DIA. X 24" SDR3 PERFORATED SEWER PIPE
- 3/4" GRAVEL IN SLEEVE AS SUMP
- SUBGRADE COMPACTED TO 95% STANDARD PROCTOR DENSITY
- 2" SCH. 80 PVC SWEEP, SWEEP TO SLEEVE FOR POLY TUBING AND DRAIN EXCESS WATER FROM CONTAINER



- FINISHED GRADE - TOP OF NATIVE SEED OR SOD THATCH LAYER AND TOP OF MULCH OR COBBLE SHALL BE FLUSH WITH TOP OF EDGER
- ADJACENT LANDSCAPE, REFER TO LANDSCAPE PLANS
- AMENDED SOIL PER SPECIFICATIONS
- SUBGRADE
- STEEL EDGER - DRILL (16) 1/2" DIA. HOLES 1" O.C. MIN. AT ALL LOW POINTS OR POORLY DRAINING AREAS IN ORDER TO ENSURE ADEQUATE DRAINAGE
- EDGER STAKE

- NOTES:**
- THERE SHALL BE NO EXPOSED SHARP / JAGGED EDGES.
 - CONTRACTOR SHALL INSTALL STAKES AS REQUIRED BY THE MANUFACTURER.

F1 INERT GROUND COVER

- NOTES:**
- APPLY PRE-EMERGENT HERBICIDE PER LABEL DIRECTIONS AND RATE

F3 CONTAINER ON HARDSCAPE

F7 STEEL EDGER

CONSULTANT			
NORRIS DESIGN Landscape Architect 418 North Tule Avenue Tucson, AZ 85701 (520) 622-9555 Josh Orth, PLA	HINMAN Protective Design Specialist 240 West 35th St, Suite 1004 New York, NY 10001 (212) 967-4890 Corinne Tan, SE	C.S. Davidson, Inc. Structural 315 West James Street, Suite 102 Lancaster, PA 17603 (717) 481-2991 Jason Vannoy, SE, PE	MES GROUP MEP 350 North Rio Street, Suite 203 Tampa, FL 33609 (813) 289-4700 Nicholas Stephenson, PE

ARCHITECT/ENGINEER OF RECORD	
A/E: TRIPLE C - The A/E Group 201 E. Jefferson Street, Suite 200 Syracuse, NY 13202 (315) 484-5958 Mat Perkins	TRIPLE C - THE A&E GROUP 70921 JOSHUA ORTH EXPIRES 03/31/2023

Office of Construction and Facilities Management VA U.S. Department of Veterans Affairs
--

Drawing Title LANDSCAPE DETAILS - DEDUCTIVE ALTERNATE #6 ELIMINATE LANDSCAPE
Approved:

Phase ISSUED FOR CONSTRUCTION
FULLY SPRINKLERED

Project Title NEW COMMUNITY LIVING CENTER
Location 2094 Albany Post Road, Montrose, NY 10548
Issue Date 05/09/2022
Checked JMO
Drawn MSJD

Project Number 620-334
Building Number CLC
Drawing Number LP301