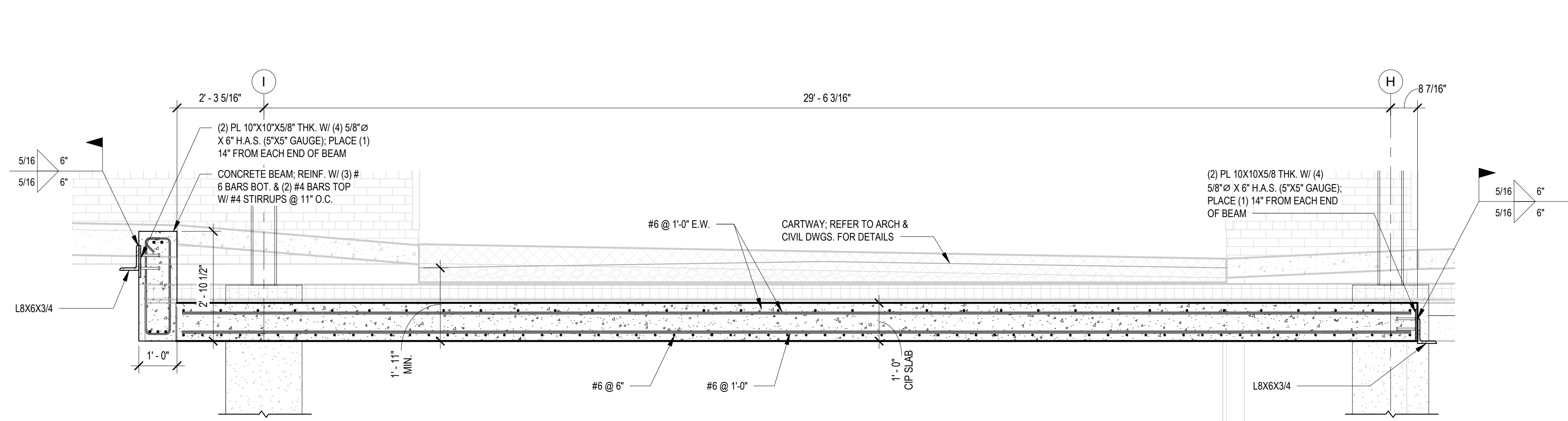
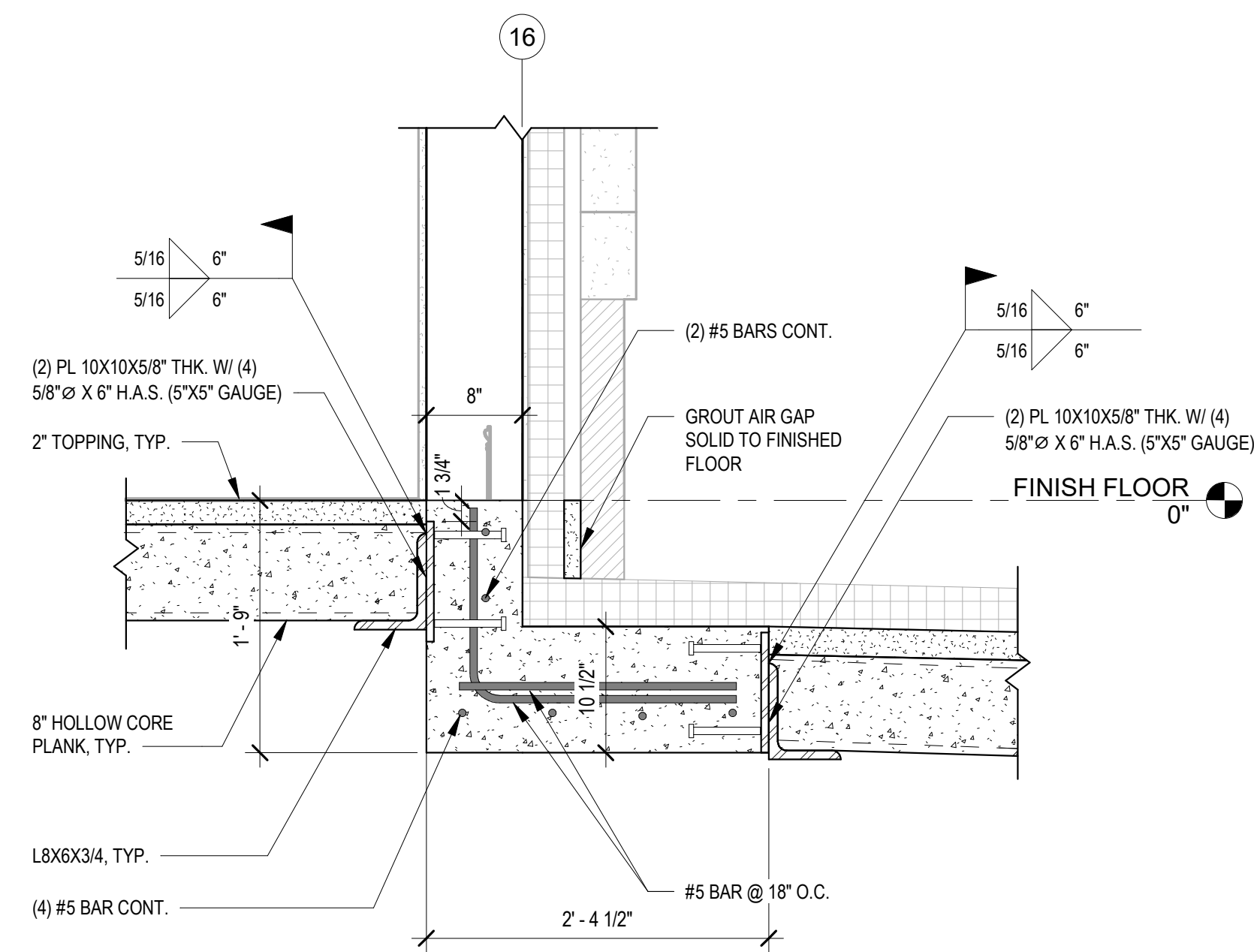


A



A
DETAIL
1/2" = 1'-0"

B

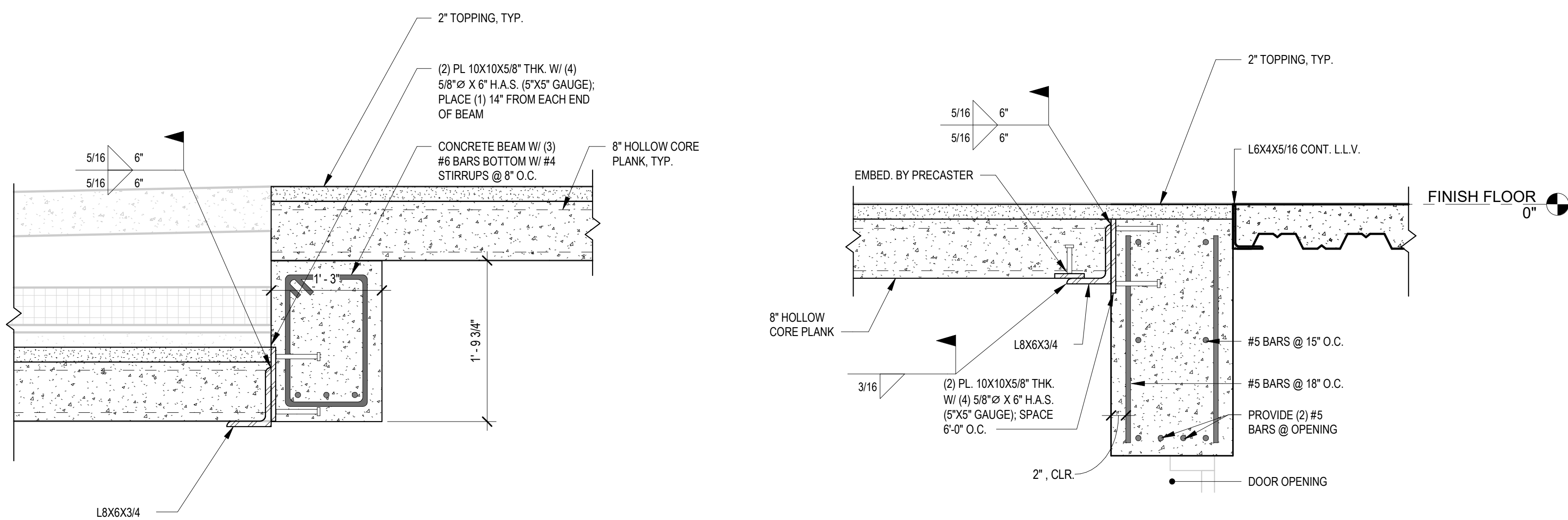


ELIMINATE SECTION OF DEDUCT ALT. #2 IS ACCEPTED.

1
SECTION
S-204
1" = 1'-0"

DEDUCT ALT. #2:
ELIMINATE TUNNEL (EAST LEG)

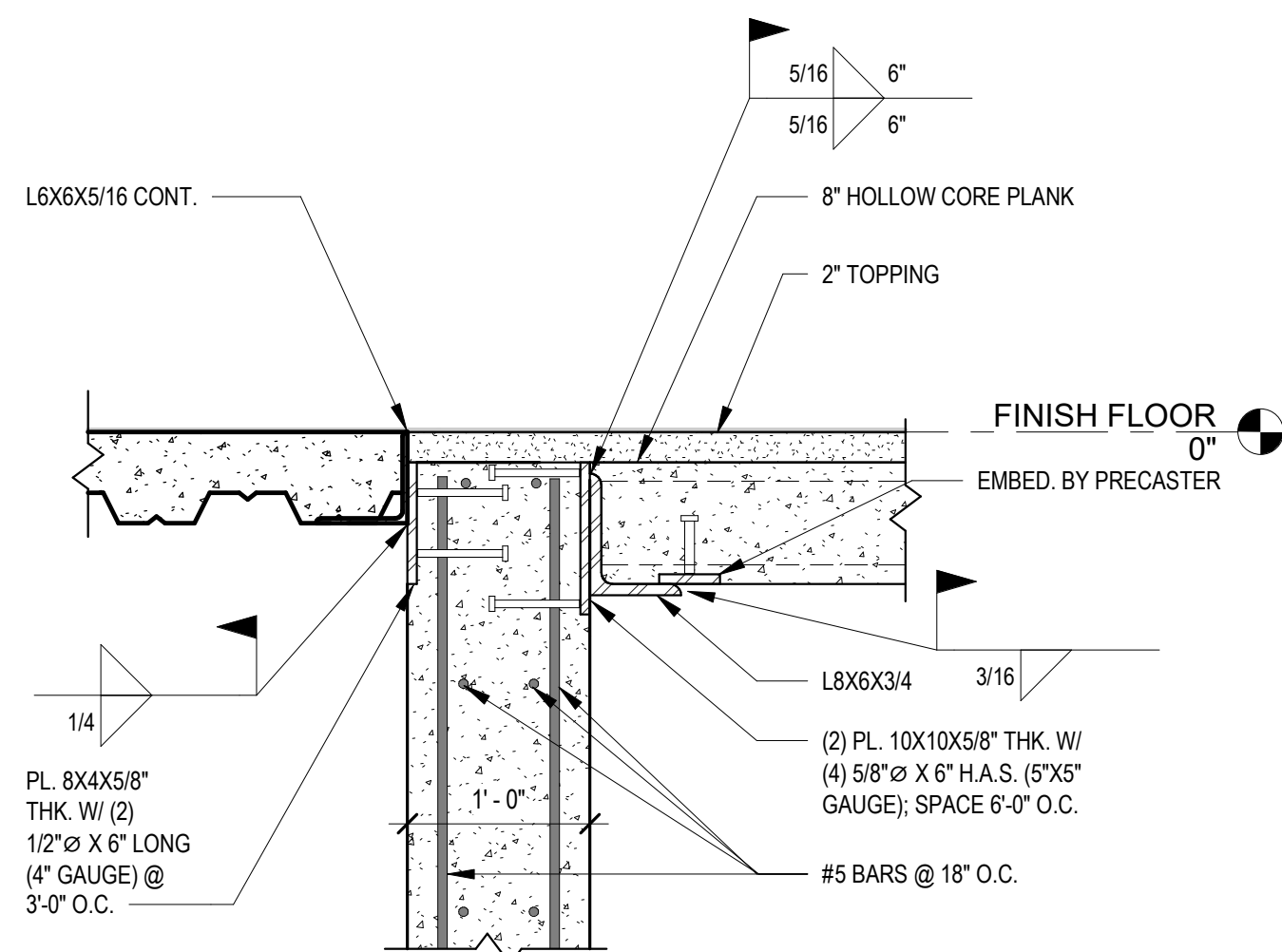
C



B
DETAIL
1" = 1'-0"

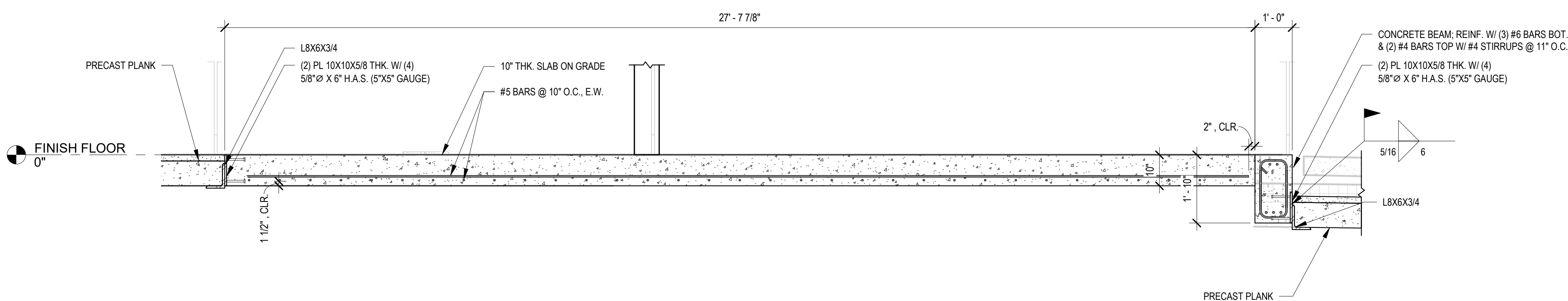
D

C
DETAIL
1" = 1'-0"



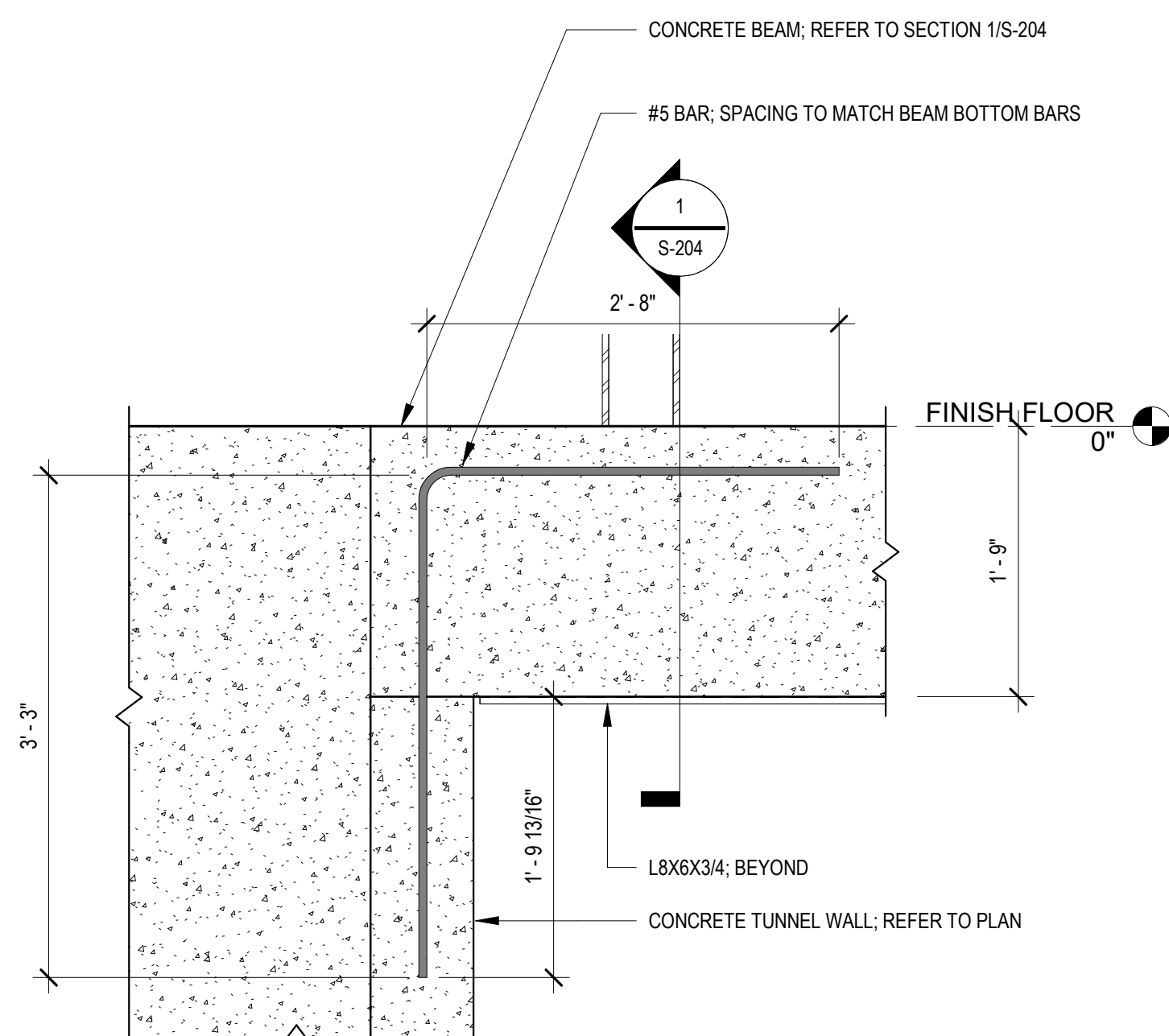
3
SECTION
S-204
1" = 1'-0"

E

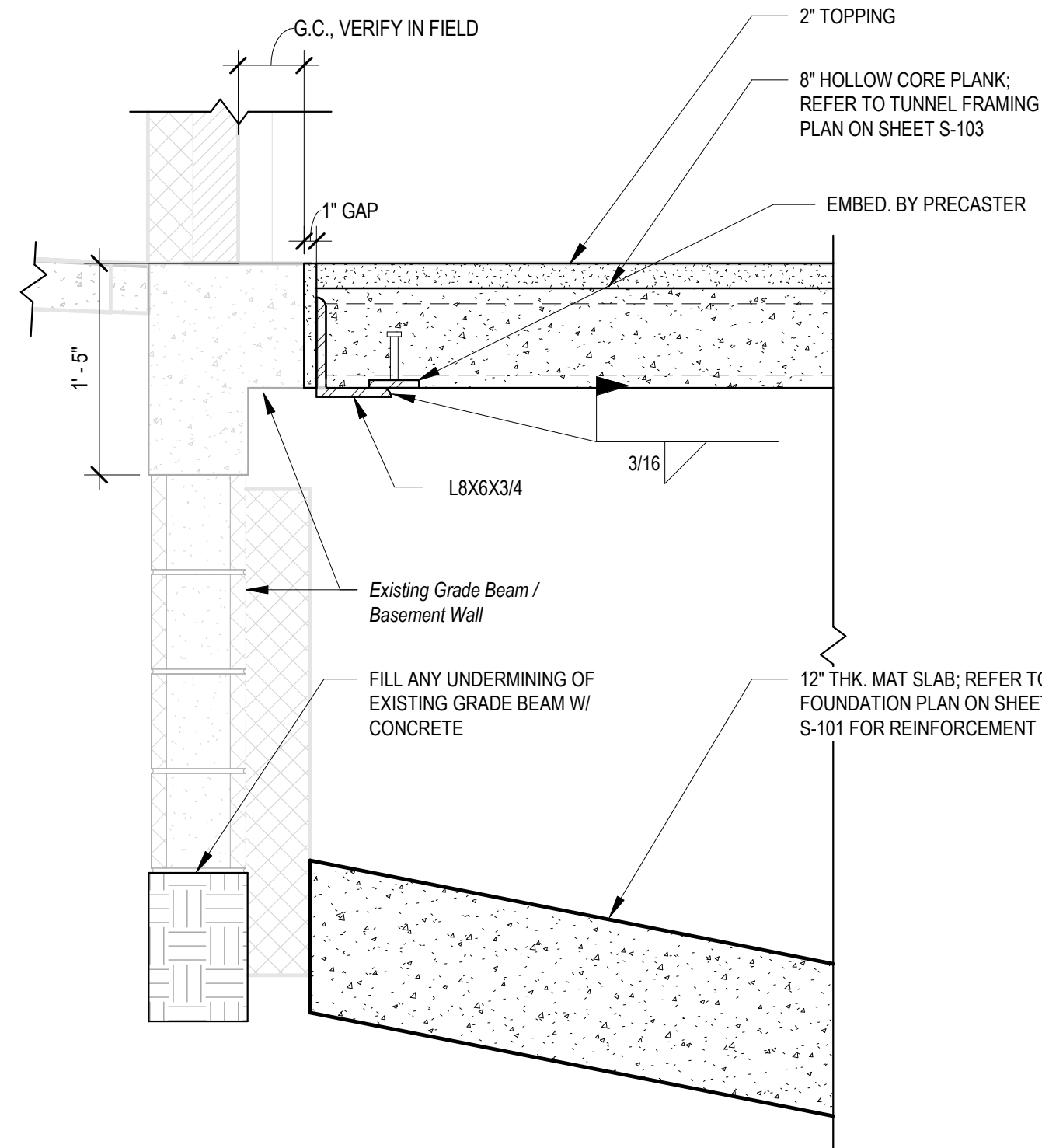


D
DETAIL
1/2" = 1'-0"

F



2
SECTION
S-204
1" = 1'-0"



4
SECTION
S-204
1" = 1'-0"

A

B

C

D

E

F

7/21/2021 5:39:40 PM

BIM 360://620-334 New Community Living Center/62031500_2014

Revisions:	Date:

CONSULTANT

NORRIS DESIGN
Landscape Architect
416 North Toole Avenue
Tucson, AZ 85711
(520) 622-9565
Josh Orth, PLA

HINMAN
Protective Design Specialist
240 West 35th St, Suite 1004
New York, NY 10001
(212) 967-4890
Corinne Tan, SE

C.S. Davidson, Inc.
Structural
515 West James Street, Suite 102
Lancaster, PA 17603
(717) 481-2991
Jason Vannoy, SE, PE

MES GROUP
MEP
550 North Roe Street, Suite 203
Tampa, FL 33609
(813) 289-4700
Nicholas Stephenson, PE

ARCHITECT/ENGINEER OF RECORD

A/E:
TRIPLE C - The A/E Group
201 E. Jefferson Street, Suite 200
Syracuse, NY 13202
(315) 484-5958
Mat Perkins



STAMP



Office of
Construction
and Facilities
Management

VA U.S. Department
of Veterans Affairs

Drawing Title FOUNDATION SECTIONS & DETAILS
Approved:

Phase ISSUED FOR CONSTRUCTION	Project Title NEW COMMUNITY LIVING CENTER	Project Number 620-334
FULLY SPRINKLERED	Location 2094 Albany Post Road, Montrose, NY 10548	Building Number CLC
	Issue Date 05/09/2022	Drawing Number S-204
	Checked WCW	Drawn SIR