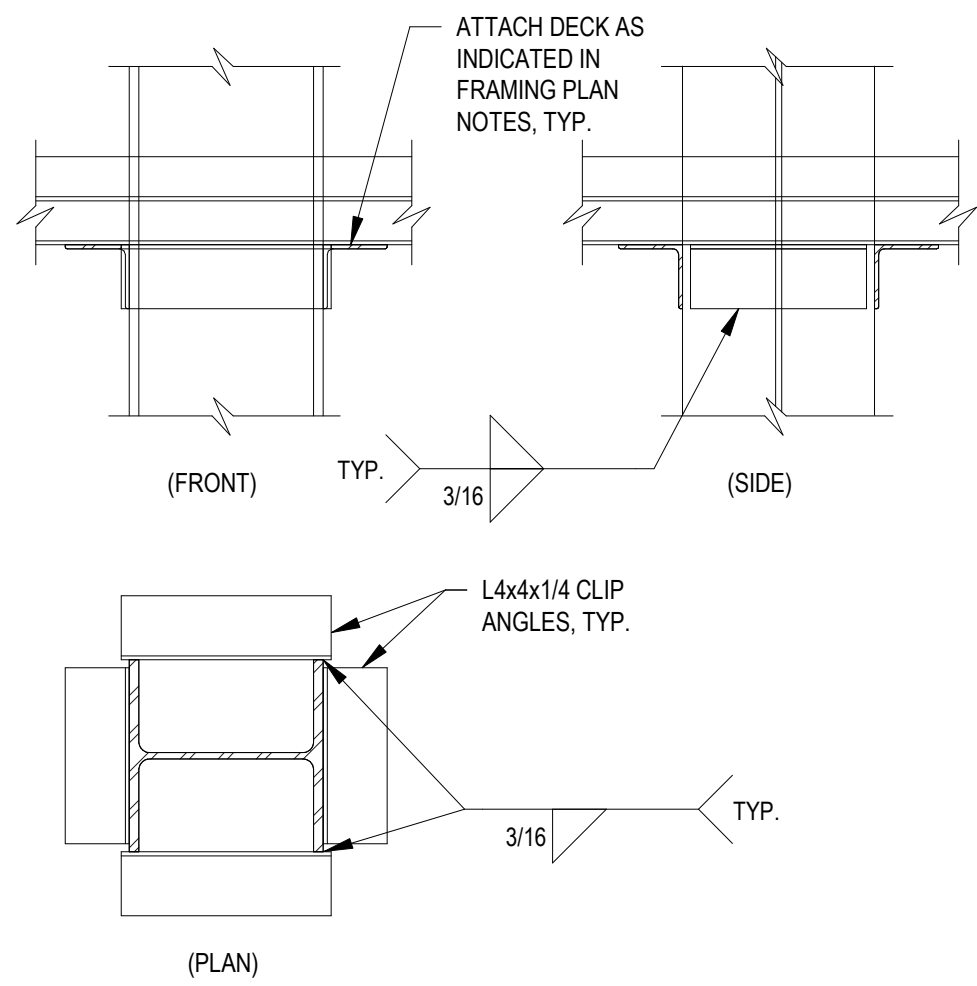


A

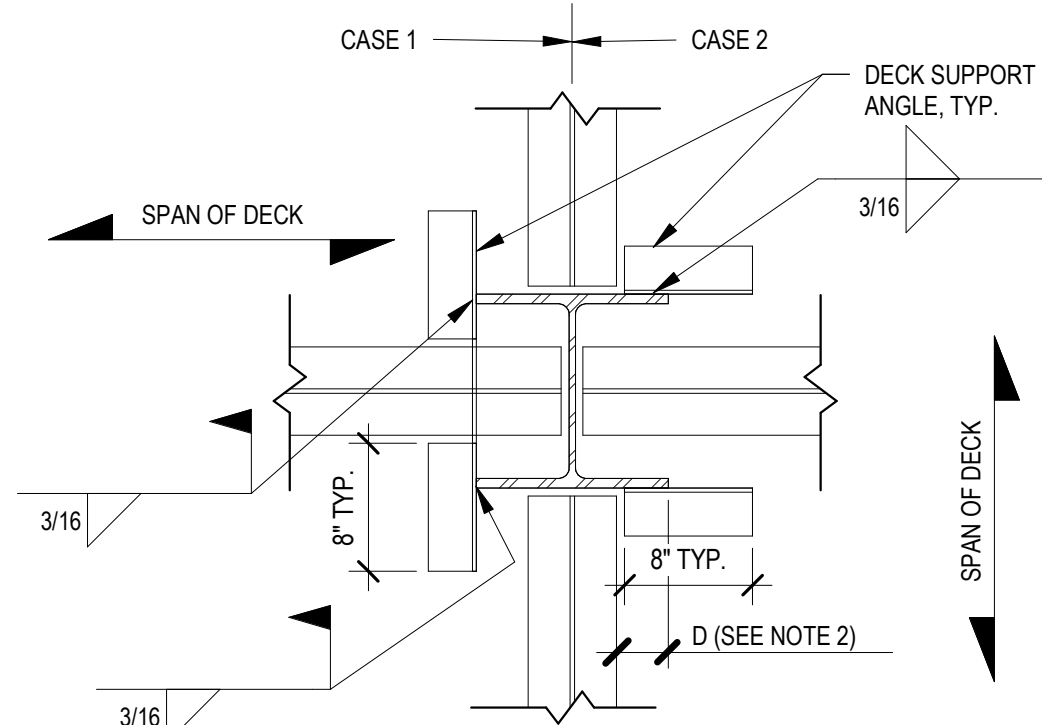


- NOTES:
1. DETAIL APPLIES ONLY AT COLUMN LOCATIONS WITHOUT ANY BEAMS FRAMING INTO IT.
 2. AT LOCATIONS WHERE THE COLUMN IS TIGHT AGAINST A WALL, THE ANGLE MAY BE OMITTED ON THAT SIDE.

TYPICAL COLUMN BRACING
DETAIL

1" = 1'-0"

A
S-301

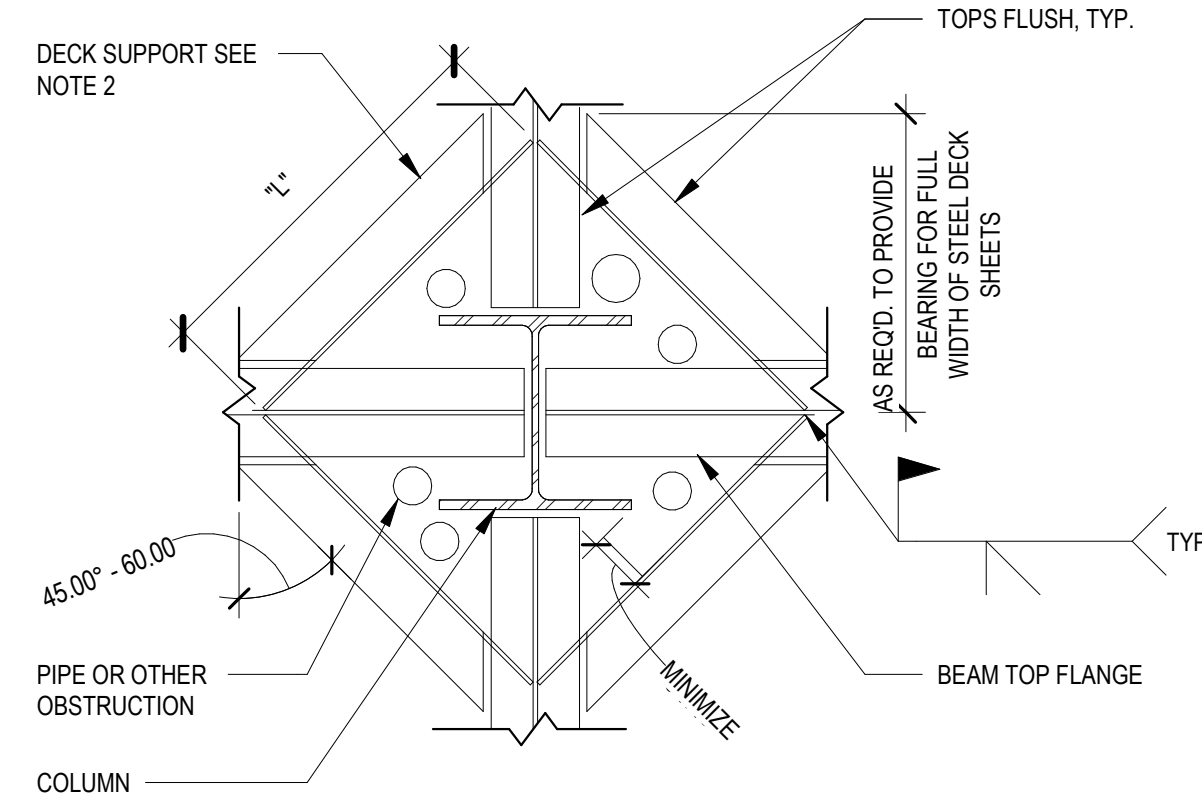


- NOTES:
1. DECK SUPPORT ANGLES TO BE L3x3x1/4, TYP.
 2. DECK SUPPORT ANGLES ARE NOT REQUIRED WHERE 'D' IS 6' OR LESS.

DECK SUPPORT AT COLUMNS
AND OTHER OBSTRUCTIONS

1" = 1'-0"

B
S-301

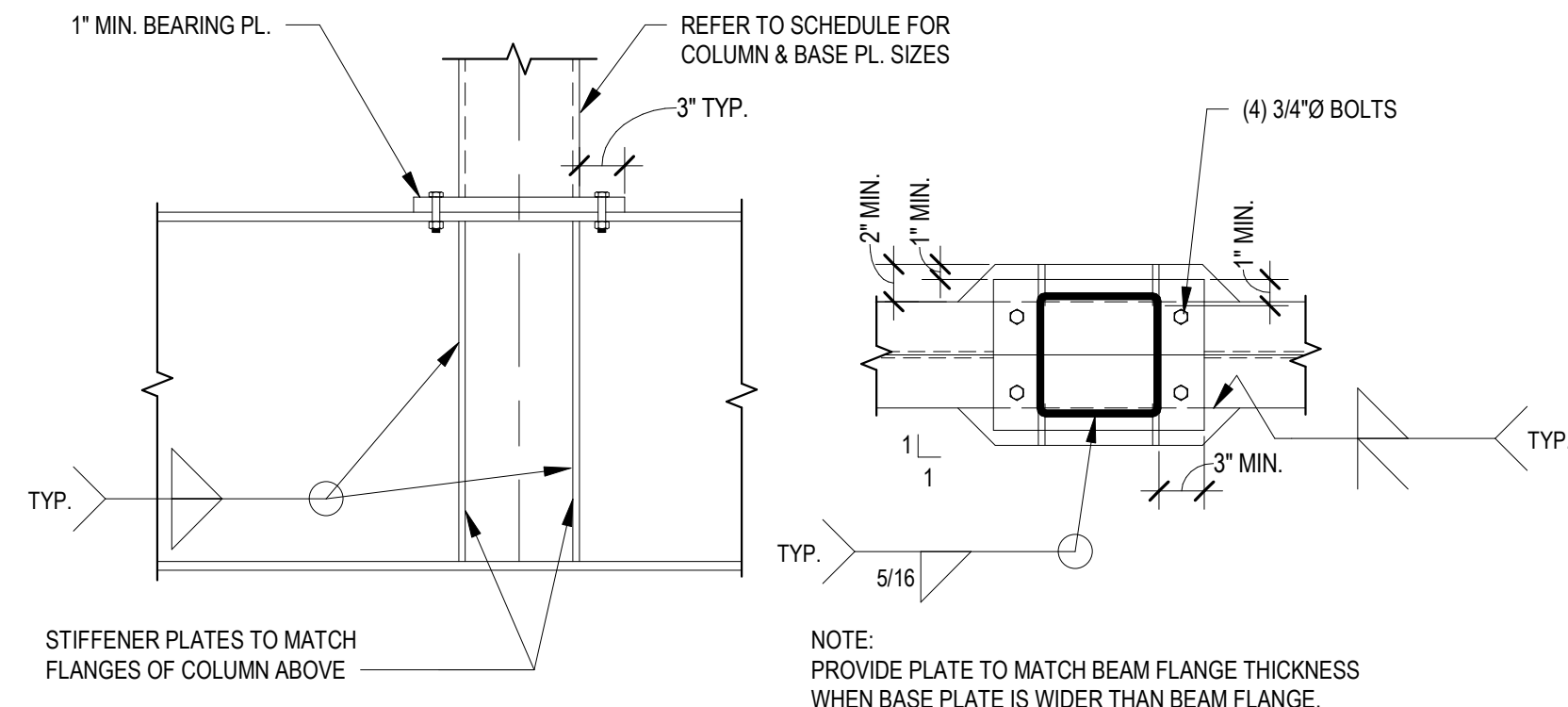


- NOTES:
1. THIS DETAIL TO BE USED AT CONDITIONS WHERE DECK IS OBSTRUCTED BY OPENINGS, MOMENT CONNECTIONS, OR OTHER SIMILAR CONDITIONS.
 2. DECK SUPPORT ANGLE SHALL BE THE FOLLOWING SIZE:
L5x3 1/2x1/4 - "L" = 9'-0" MAX.
L6x4x1/4 - "L" = 9'-0" MAX.
C10x20 - "L" > 9'-0"

DECK SUPPORT AT COLUMNS
AND OTHER OBSTRUCTIONS (2)

1" = 1'-0"

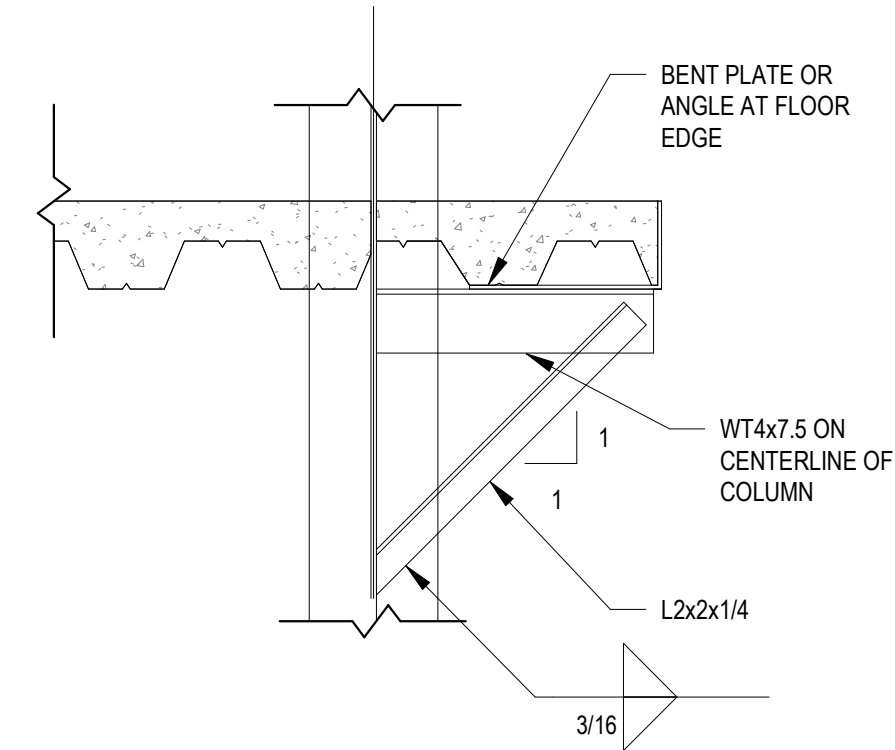
C
S-301



COLUMN TRANSFER BEAM
DETAIL

1" = 1'-0"

D
S-301

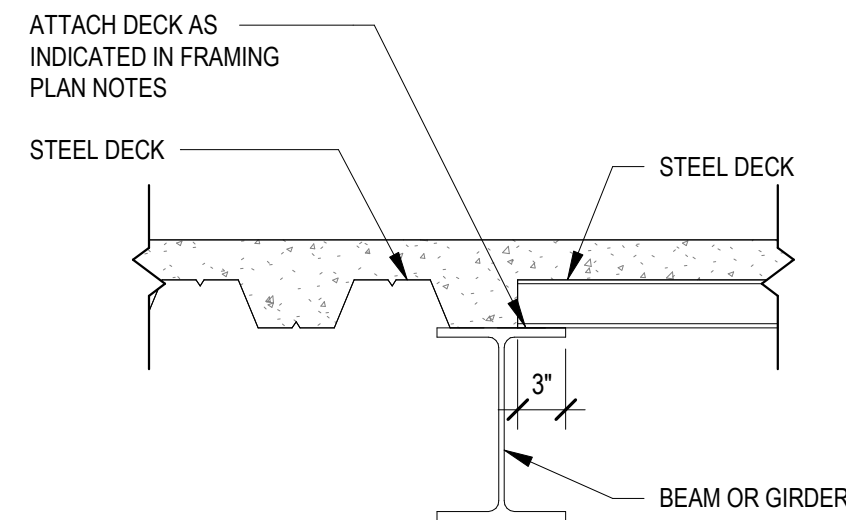


DECK EDGE SUPPORT AT
COLUMNS

1" = 1'-0"

E
S-301

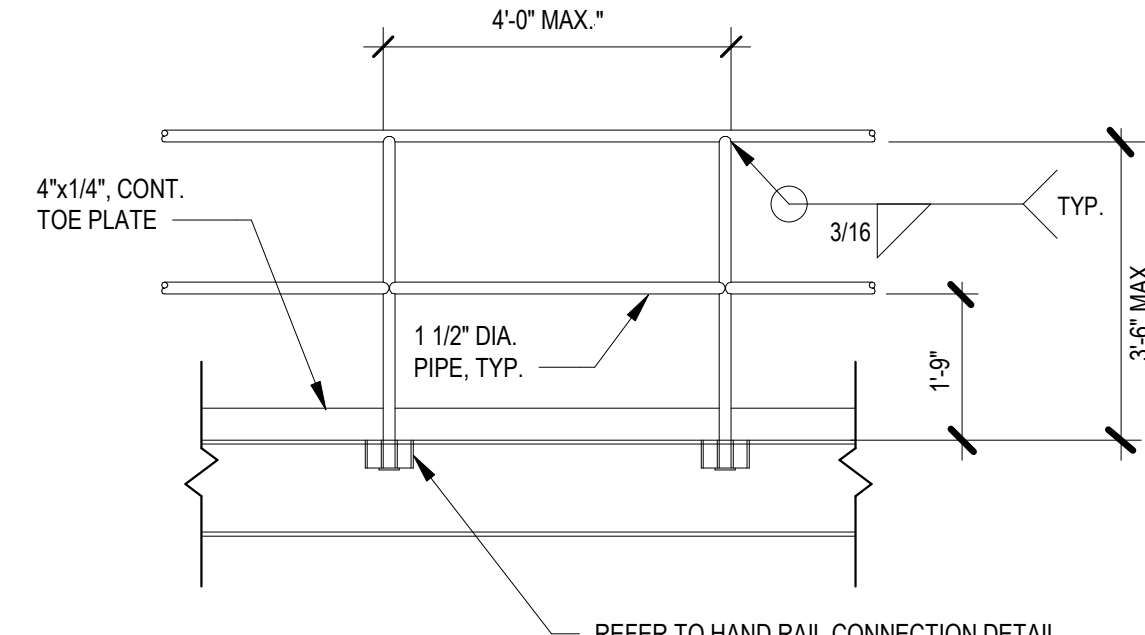
C



STEEL DECK DIRECTION
CHANGE

1" = 1'-0"

F
S-301

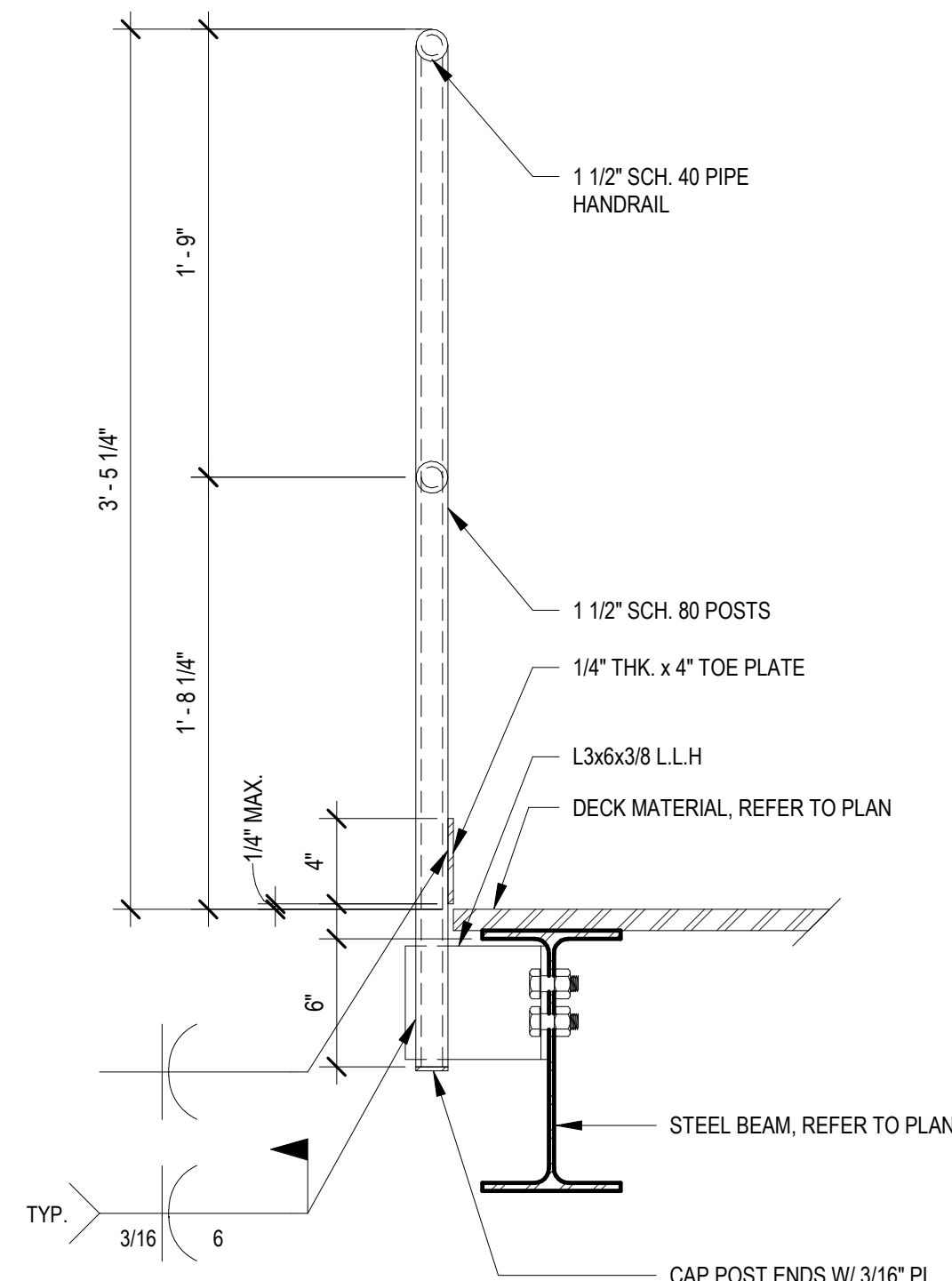


- NOTES:
1. ALL POSTS SHALL BE SCHEDULE 80 PIPE. ALL RAILS SHALL BE SCHEDULE 40 PIPE.
 2. INSTALL HAND RAIL SQUARE AND LEVEL.
 3. SECURE HAND RAIL IN SLEEVES WITH SET SCREWS.
 4. MAXIMUM DISTANCE BETWEEN NON-CONTINUOUS HAND RAIL IS 2' EXCEPT FOR ENTRANCE & EXITS.
 5. REFER TO SPECIFICATIONS FOR COATING REQUIREMENTS.

HAND RAIL DETAIL

1" = 1'-0"

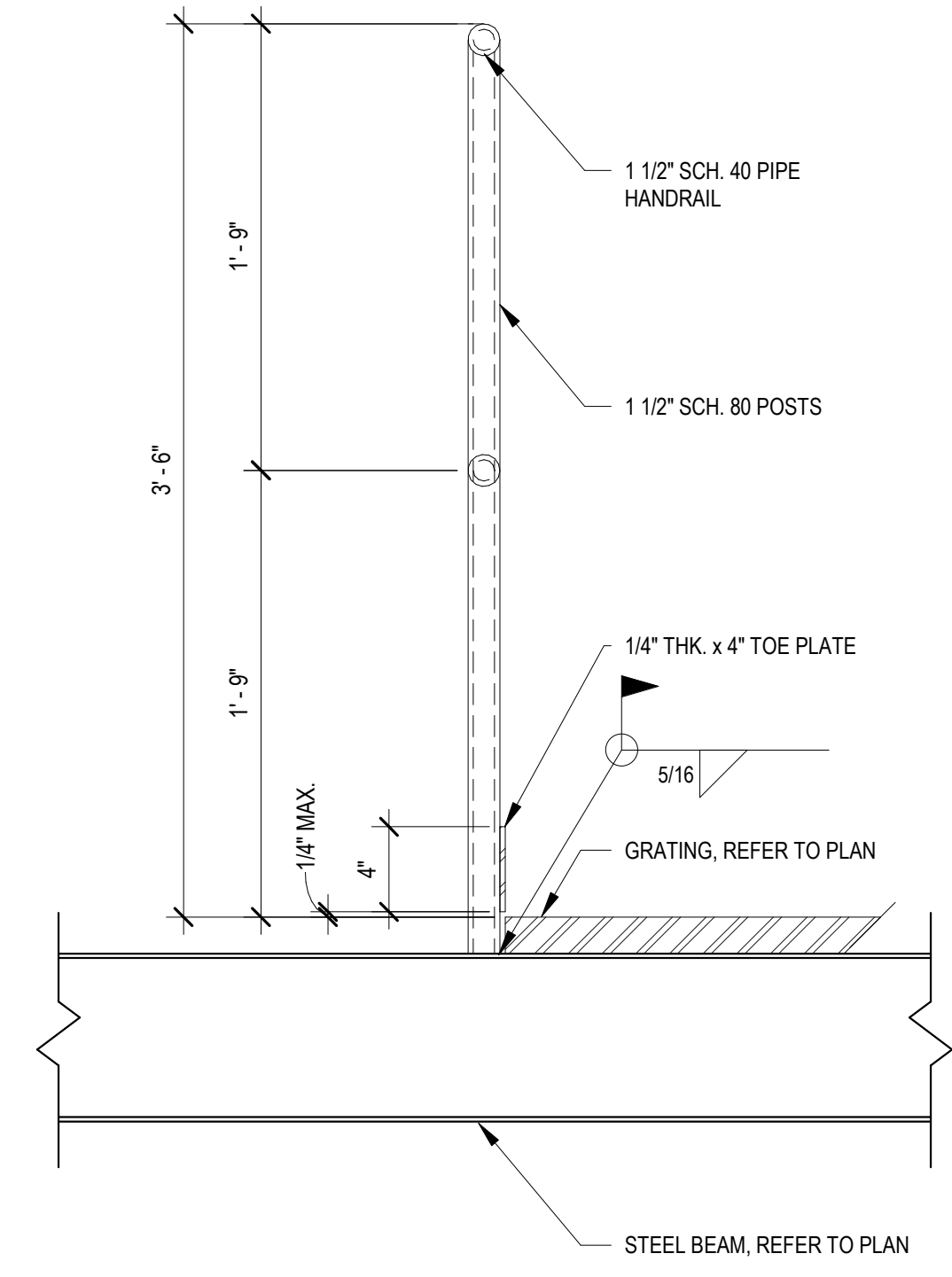
G
S-301



HAND RAIL CONNECTION
DETAIL

1 1/2" = 1'-0"

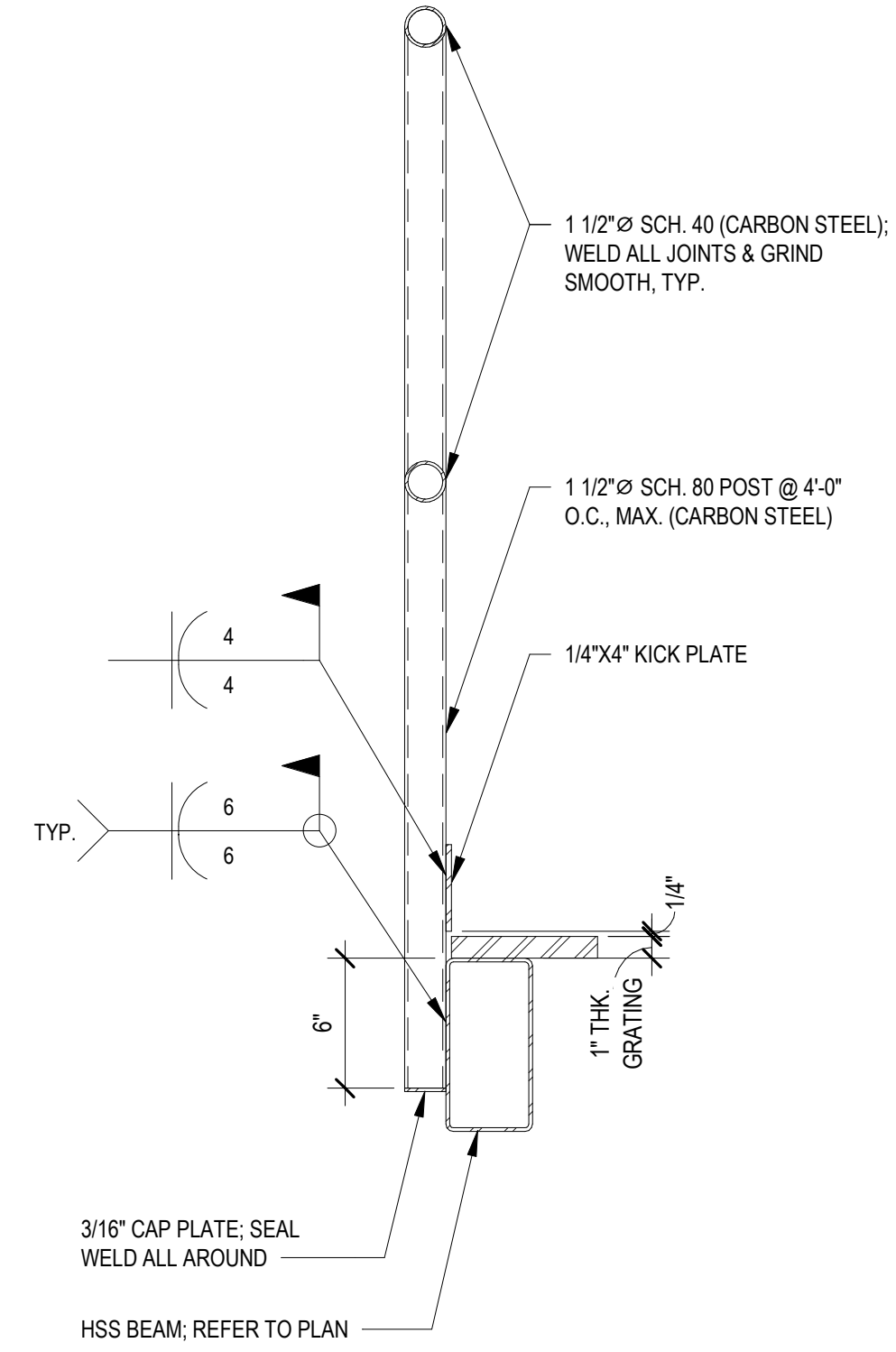
H
S-301



HAND RAIL CONNECTION
DETAIL (2)

1 1/2" = 1'-0"

J
S-301



TYPICAL GUARDRAIL
CONNECTION AT HSS

1 1/2" = 1'-0"

K
S-301

F

Revisions:	Date:

CONSULTANT			
NORRIS DESIGN Landscape Architect 416 North Toole Avenue Tucson, AZ 85711 (520) 622-9565 Josh Orth, PLA	HINMAN Protective Design Specialist 240 West 5th St. Suite 1004 New York, NY 10001 (212) 967-4890 Corrine Tan, SE	C.S. Davidson, Inc. Structural 515 West James Street, Suite 102 Lancaster, PA 17603 (717) 481-2991 Jason Vannoy, SE, PE	MES GROUP MEP 550 North Rex Street, Suite 203 Tampa, FL 33609 (813) 289-4700 Nicholas Stephenson, PE

ARCHITECT/ENGINEER OF RECORD		STAMP
A/E: TRIPLE C - The A/E Group 201 E. Jefferson Street, Suite 200 Syracuse, NY 13202 (315) 484-5958 Mat Perkins	TRIPLE C - THE A&E GROUP 	

Office of Construction and Facilities Management VA U.S. Department of Veterans Affairs

Drawing Title FRAMING DETAILS
Approved:

Phase ISSUED FOR CONSTRUCTION
FULLY SPRINKLERED

Project Title NEW COMMUNITY LIVING CENTER
Location 2094 Albany Post Road, Montrose, NY 10548
Issue Date 05/09/2022
Checked WCW
Drawn SIR

Project Number 620-334
Building Number CLC
Drawing Number S-301