

A

B

C

D

E

F

A

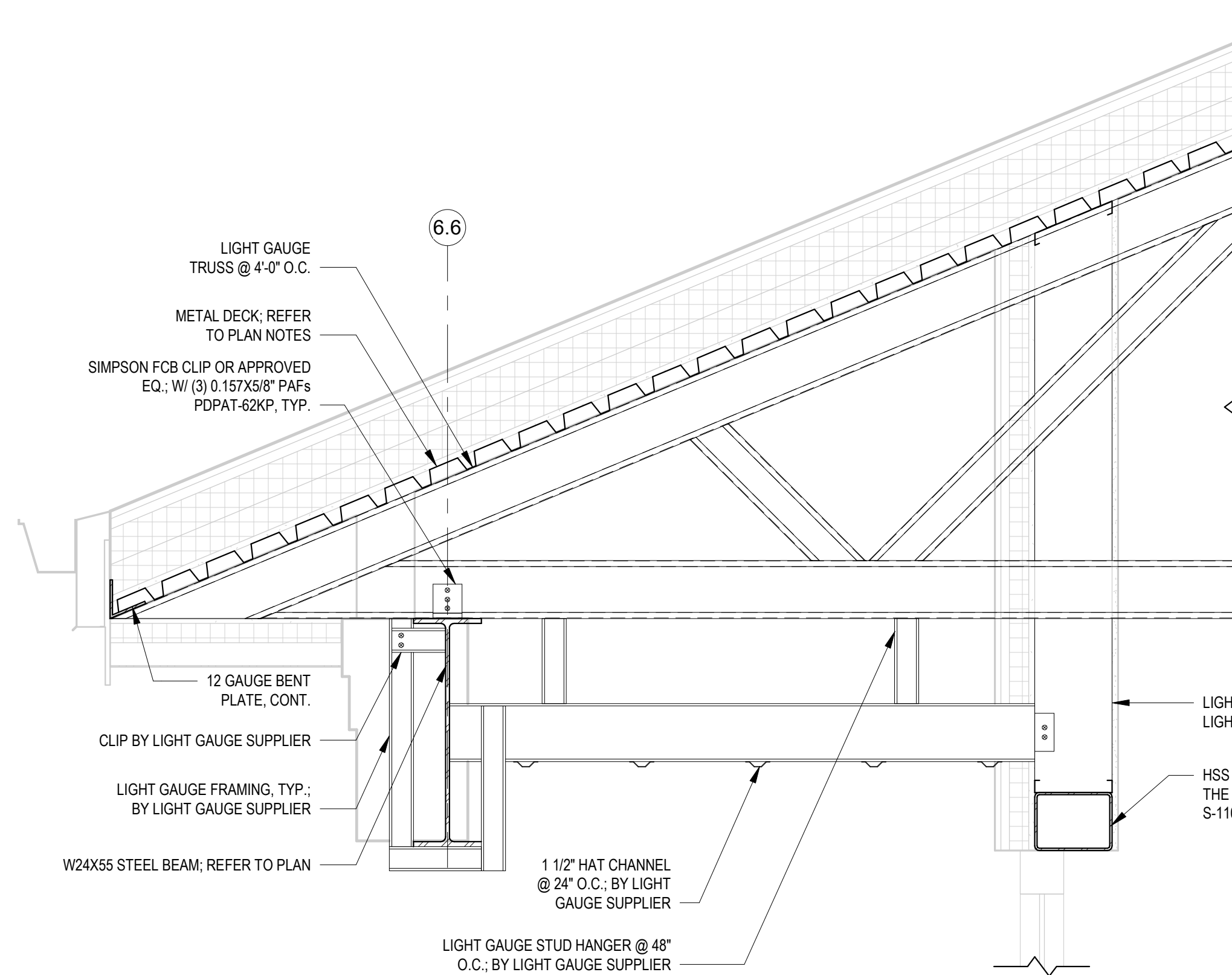
B

C

D

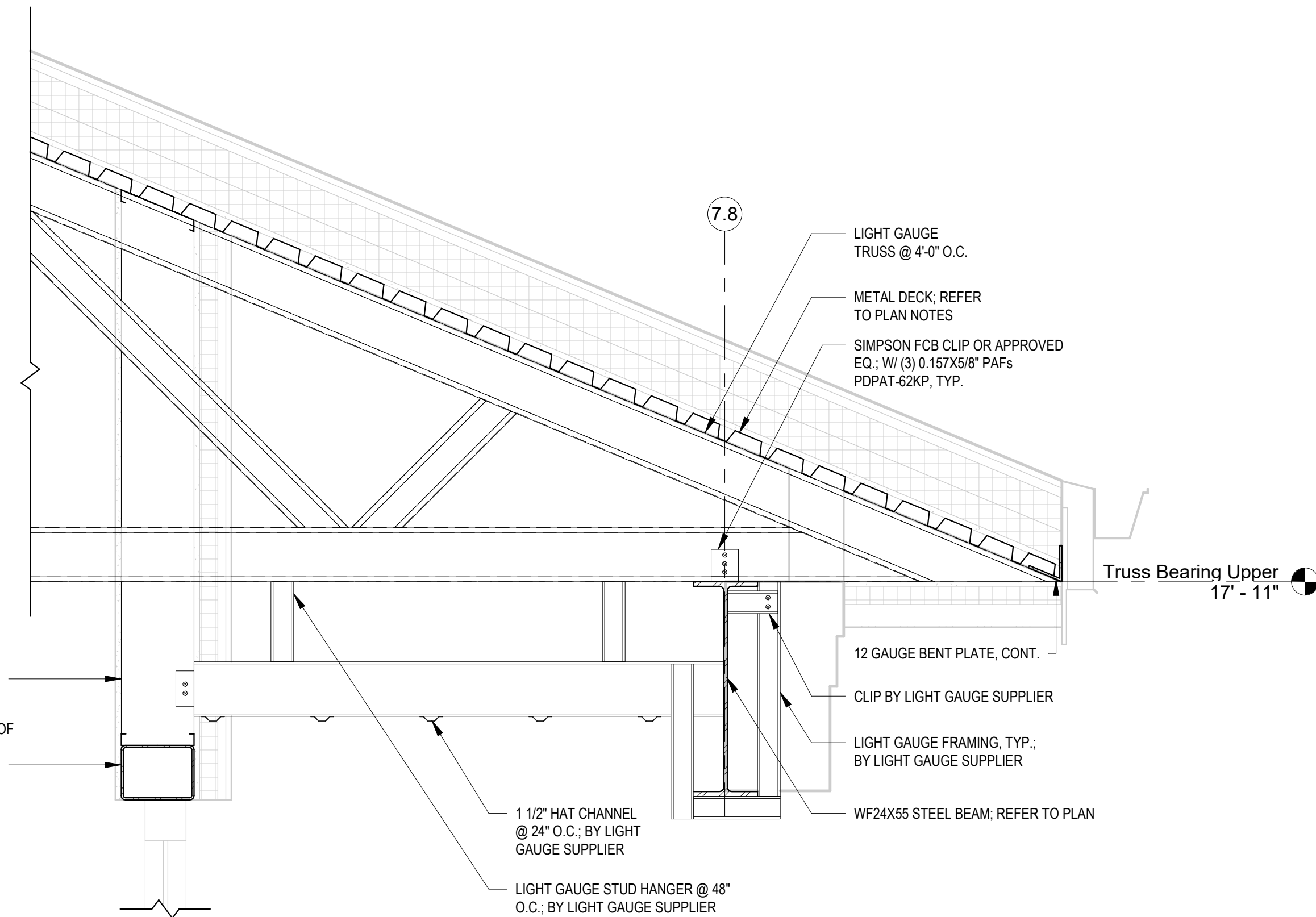
E

F



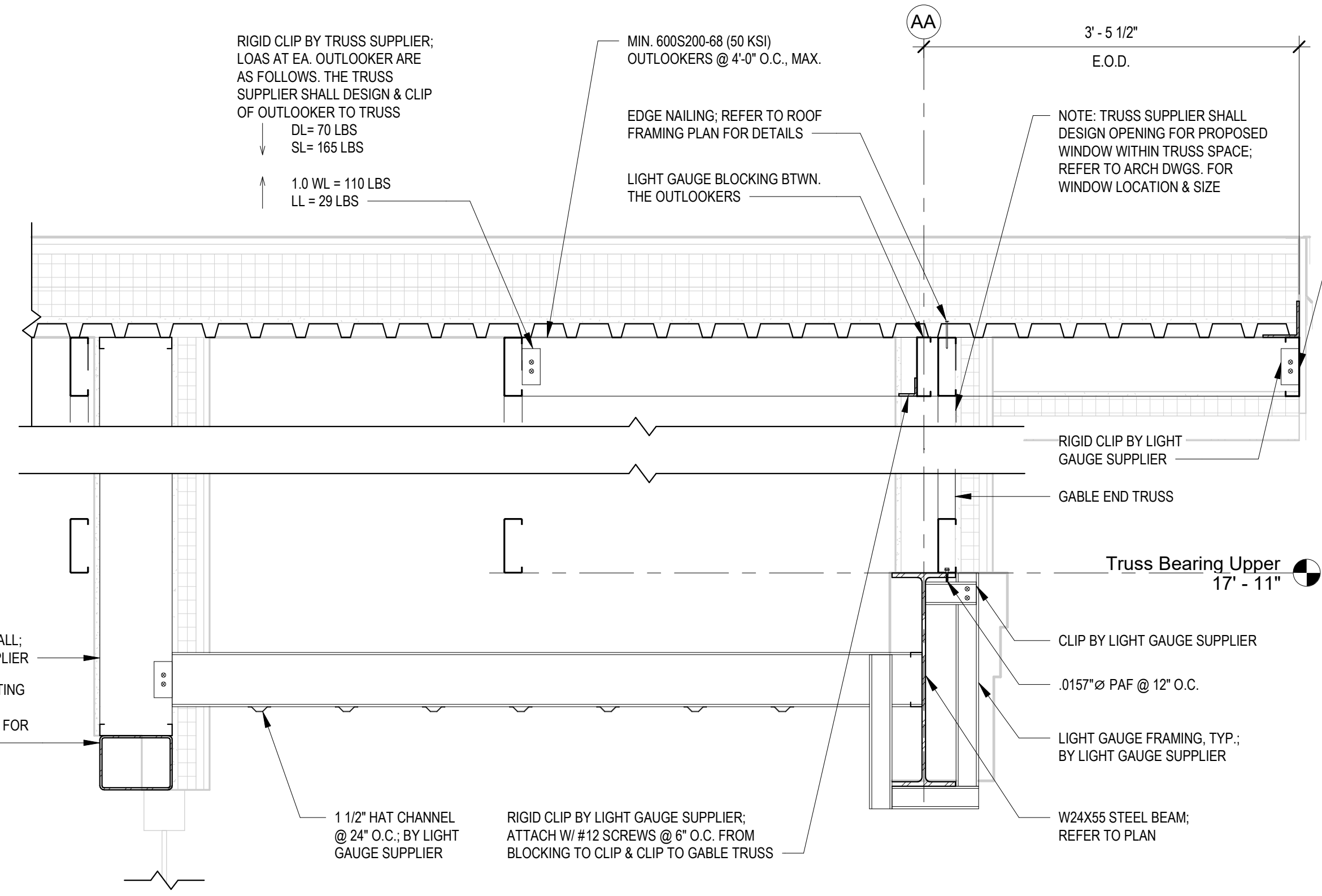
LIGHT GAUGE STUD WALL; BY LIGHT GAUGE SUPPLIER

HSS HEADER SUPPORTING TOP OF THE CURRENT WALL; REFER TO S-110 FOR SIZE & ELEVATION

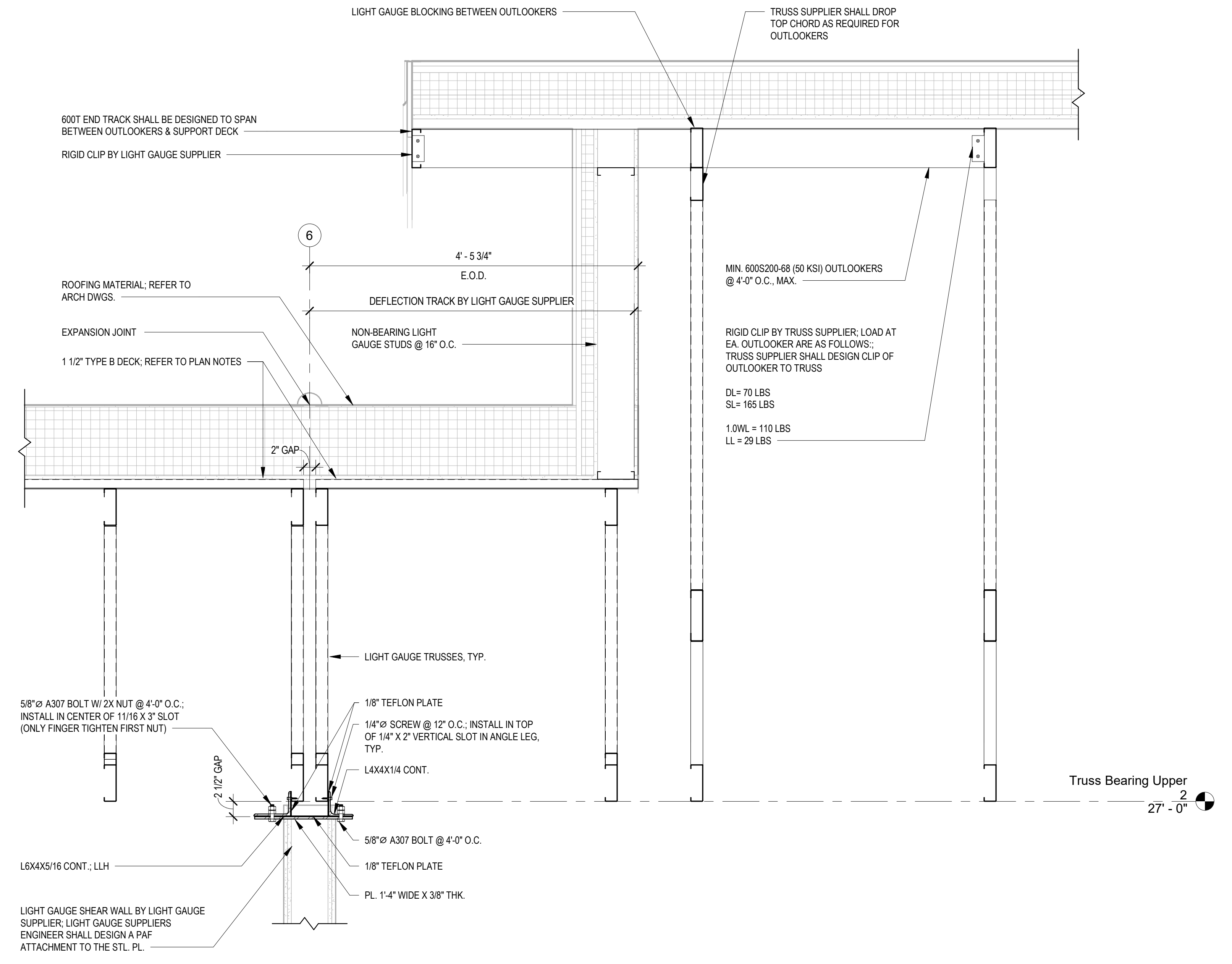


Truss Bearing Upper
17' - 11"

SECTION
S-310
1" = 1'-0"



SECTION
S-310
1" = 1'-0"



SECTION
S-310
1" = 1'-0"

Revisions:	Date:

CONSULTANT

NORRIS DESIGN
Landscape Architect
416 North Toole Avenue
Tucson, AZ 85701
(520) 622-9565
Josh Orth, PLA

HINMAN
Protective Design Specialist
240 West 35th St, Suite 1004
New York, NY 10001
(212) 967-4890
Corinne Tan, SE

C.S. Davidson, Inc.
Structural
515 West James Street, Suite 102
Lancaster, PA 17603
(717) 481-2991
Jason Vannoy, SE, PE

MES GROUP
MEP
550 North Reno Street, Suite 203
Tampa, FL 33609
(813) 289-4700
Nicholas Stephenson, PE

ARCHITECT/ENGINEER OF RECORD

A/E:
TRIPLE C - The A/E Group
201 E. Jefferson Street, Suite 200
Syracuse, NY 13202
(315) 484-5958
Mat Perkins

TRIPLE C - THE A&E GROUP
A MULTI-DISCIPLINE COMPANY

STAMP
STATE OF NEW YORK
NICHOLAS C. WERNER
093033
5/9/2022 License valid through 11/30/2024

Office of Construction and Facilities Management

VA U.S. Department of Veterans Affairs

Drawing Title
FRAMING SECTIONS

Approved:

Phase
ISSUED FOR CONSTRUCTION

FULLY SPRINKLERED

Project Title
NEW COMMUNITY LIVING CENTER

Location
2094 Albany Post Road, Montrose, NY 10548

Issue Date
05/09/2022

Checked
WCW

Drawn
SIR

Project Number
620-334

Building Number
CLC

Drawing Number
S-310