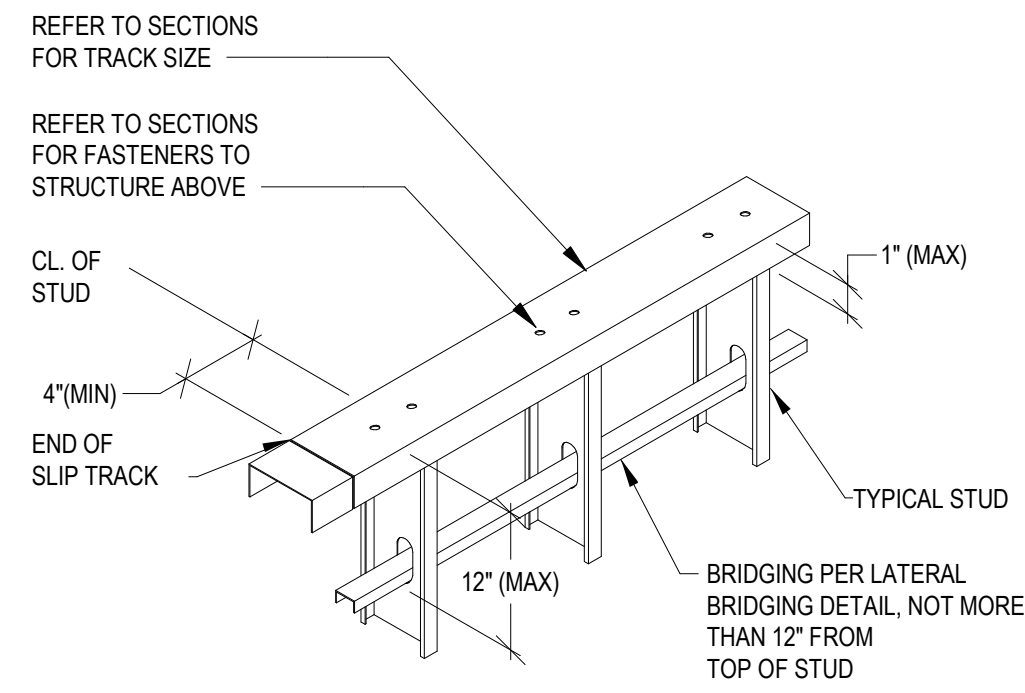
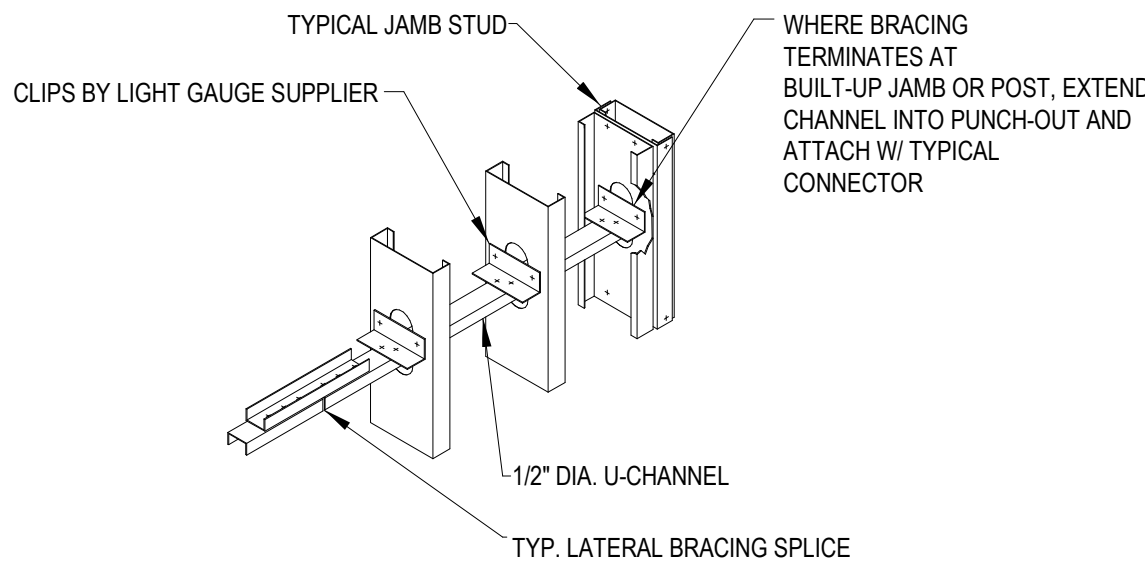


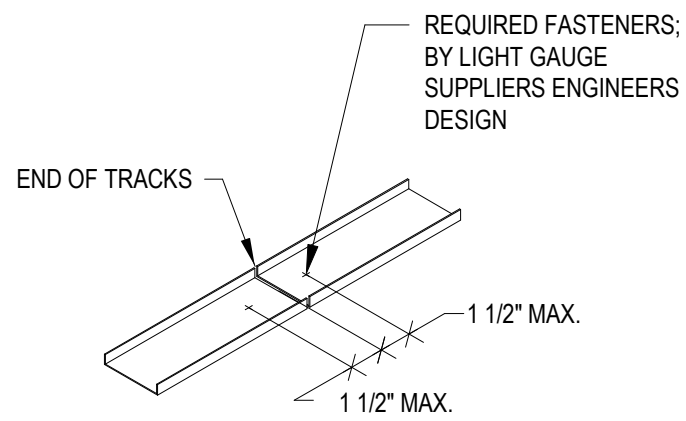
A



**SLIP TRACK DETAIL**  
NOT TO SCALE

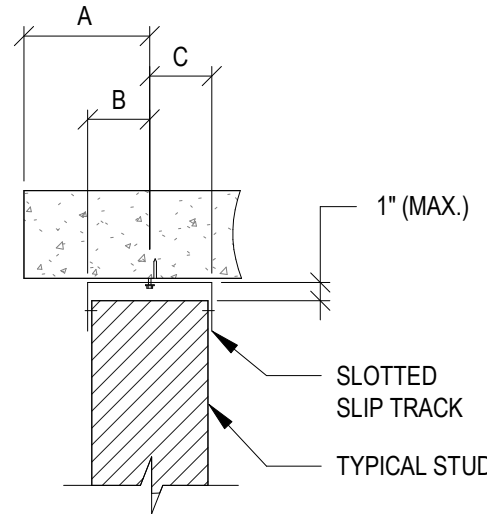


**LATERAL BRIDGING DETAIL**  
NOT TO SCALE

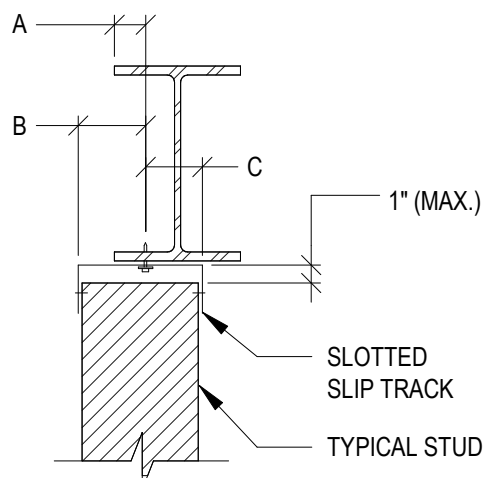


**BOTTOM TRACK SPLICE DETAIL**  
NOT TO SCALE

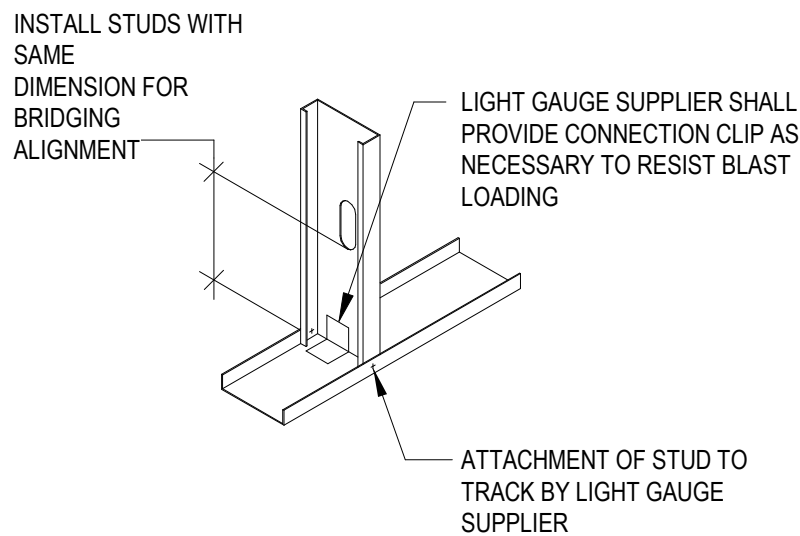
B



**WALL INSIDE EDGE OF SLAB**  
NOT TO SCALE



**WALL OUTSIDE EDGE OF BEAM**  
NOT TO SCALE



**STUD TO TRACK CONNECTION**  
NOT TO SCALE

NOTES:  
1. DIMENSIONS A, B, AND C, MUST ALL BE AT LEAST 3" (MIN.)

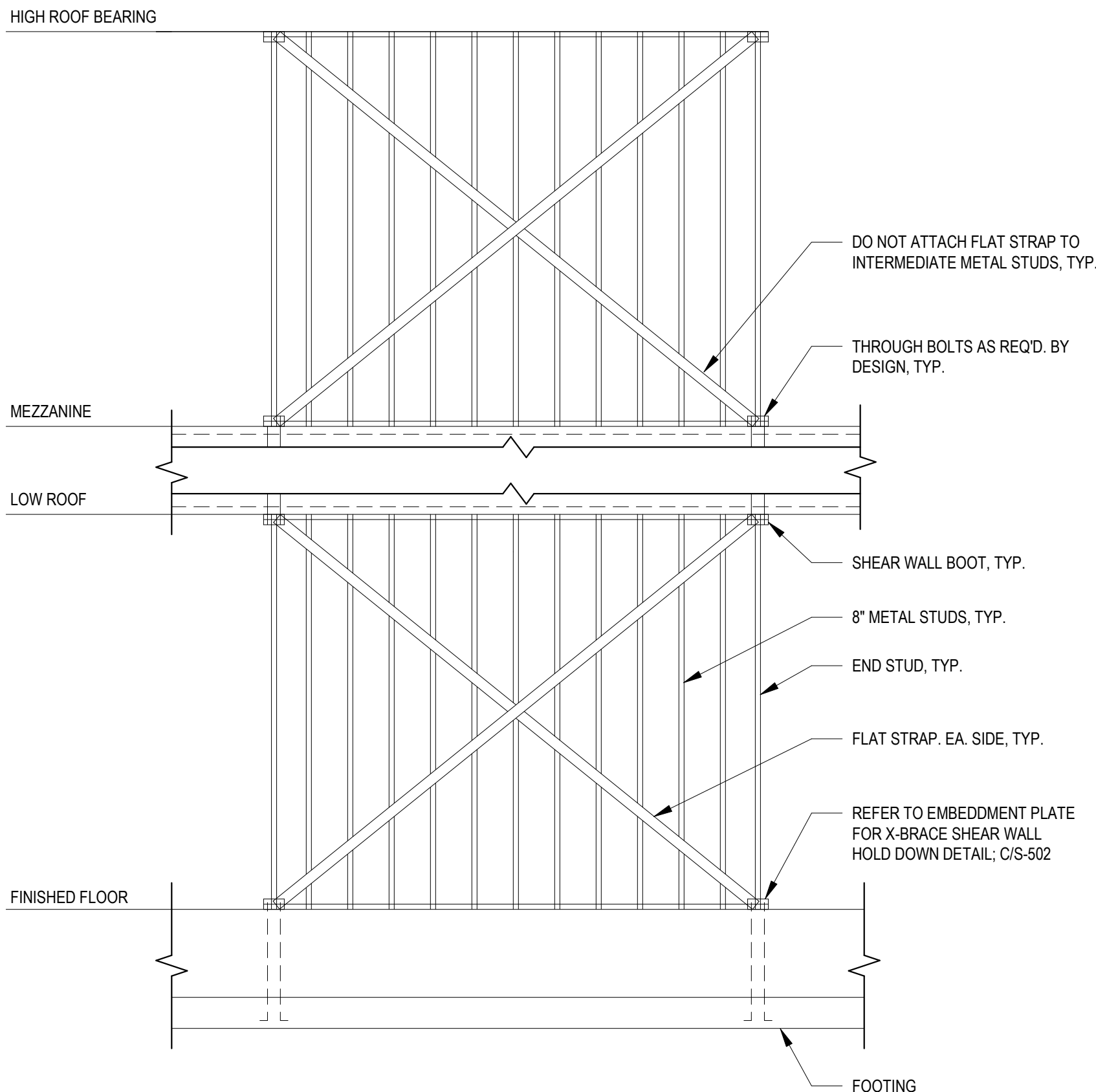
NOTES:  
1. DIMENSIONS A, B, AND C, MUST ALL BE AT LEAST 3" (MIN.)

**CONCEPTUAL STUD WALL DETAILS**  
1" = 1'-0"

A  
S-501

NOTE:  
DETAILS SHOWN ABOVE ARE CONCEPT DETAILS ONLY. LIGHT GAUGE SUPPLIER'S ENGINEER SHALL DESIGN CONNECTION FOR PROJECT LOADS PER S-501 AND PROJECT SPECIFICATIONS FOR ADDITIONAL LOAD REQUIREMENTS.

D



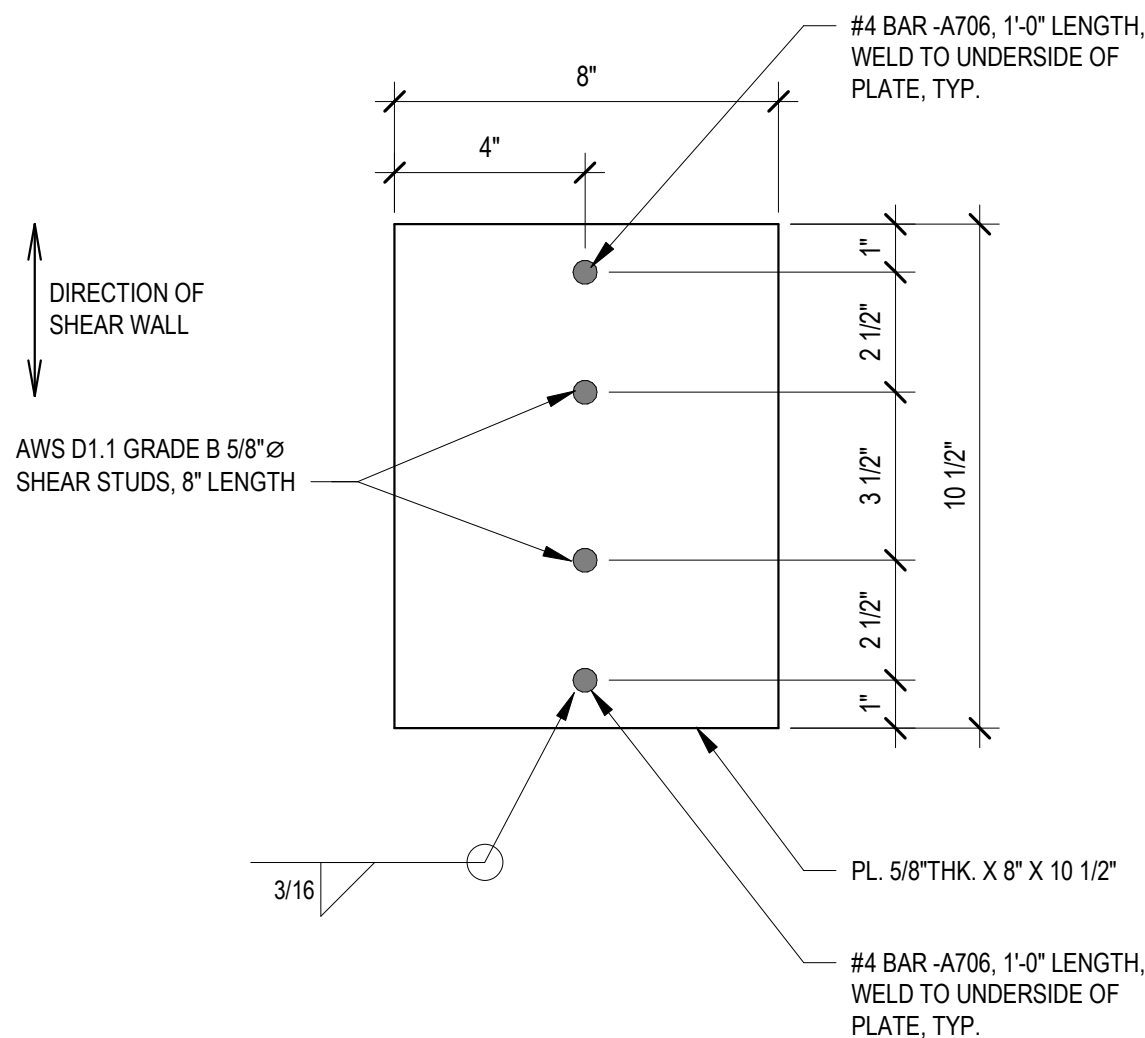
NOTES:  
1. REFER TO LIGHT GAUGE SHEAR WALL SCHEDULE, THIS SHEET, FOR LOADS APPLIED TO EACH SHEAR WALL AT EACH LEVEL.  
2. REFER TO STRUCTURAL PLAN SHEETS FOR SHEAR WALL LOCATIONS.  
3. COLD-FORMED STEEL SUPPLIER SHALL PREPARE COMPLETE DESIGN CALCULATIONS, SEALED BY A STRUCTURAL ENGINEER LICENSED IN THE STATE OF NEW YORK, FOR ALL FRAMING MEMBERS AND ACCESSORIES COMPRISING THE LIGHT GAUGE SHEAR WALLS. SEALED CALCULATIONS AND SHOP DRAWINGS SHALL BE SUBMITTED FOR REVIEW PRIOR TO FABRICATION.  
4. SHEAR WALL DESIGN SHALL ACCOUNT FOR PENETRATIONS THROUGH TRACK REQUIRED FOR MEP PENETRATIONS. COORDINATE REQUIRED PENETRATIONS WITH MEP PLANS, TYP.  
5. BUILDING DRIFT FROM WIND LOADS SHOULD BE LIMITED TO H/400.

**TYPICAL LIGHT GAUGE SHEAR WALL ELEVATION**  
1" = 1'-0"

B  
S-501

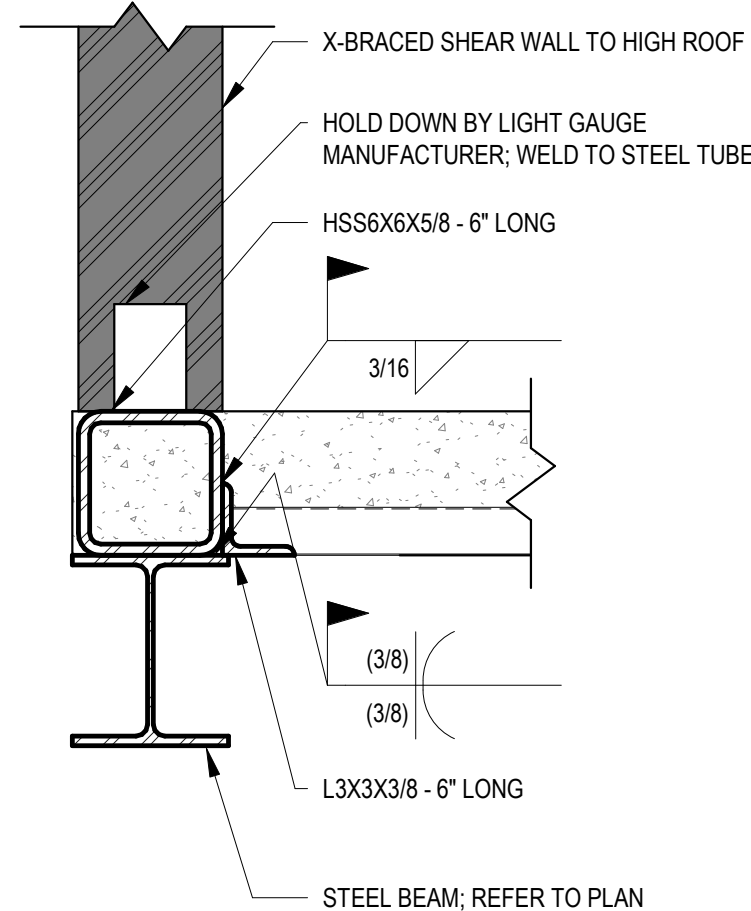
SHEAR WALL DESIGNATION	LENGTH	APPLIED LOADS (WIND -1.0W) / (SEISMIC -1.0E) KIPS	
		LOW ROOF	HIGH ROOF
LGX-1	13'-0"	11.46/3.74	N/A
LGX-2	18'-0"	3.32/1.82	N/A
LGX-3	17'-0"	3.32/1.82	N/A
LGX-4	14'-0"	11.46/3.73	N/A
LGX-5	14'-0"	11.46/3.73	N/A
LGX-6	17'-0"	3.32/1.82	N/A
LGX-7	17'-0"	3.32/1.82	N/A
LGX-8	14'-0"	11.46/3.73	N/A
LGX-9	16'-0"	N/A	6.29/6.8
LGX-10	16'-0"	N/A	12.72/12.12
LGX-11	12'-0"	N/A	4.03/23.05
LGX-12	12'-0"	N/A	4.03/23.05
LGX-13	N/A	N/A	NOT USED
LGX-14	16'-0"	N/A	11.42/10.82
LGX-15	16'-0"	N/A	6.89/7.22
LGX-16	8'-0"	N/A	15.4/13.5
LGX-17	14'-0"	8.79/3.00	N/A
LGX-18	14'-0"	15.00/4.18	N/A

NOTES:  
1. SHEAR WALLS INDICATED BY LGX-# INDICATE AN X-BRACED WALL.



**EMBEDMENT PLATE FOR X-BRACE SHEAR WALL HOLDDOWN DETAIL**  
3" = 1'-0"

C  
S-501



**HIGH ROOF SHEAR WALL CONNECTION TO STEEL BEAMS BELOW DETAIL**  
1 1/2" = 1'-0"

D  
S-501

F

Revisions:	Date:

**CONSULTANT**

**NORRIS DESIGN**  
Planning, Landscape Architecture, Engineering

**HINMAN**

**C.S. Davidson, Inc.**

**MES GROUP**

**Landscape Architect**  
416 North Toole Avenue  
Tucson, AZ 85710  
(520) 622-9565  
Josh Orth, PLA

**Protective Design Specialist**  
240 West 35th St, Suite 1004  
New York, NY 10001  
(212) 967-4890  
Corinne Tan, SE

**Structural**  
315 West James Street, Suite 102  
Lancaster, PA 17603  
(717) 481-2991  
Jason Vannoy, SE, PE

**MEP**  
550 North Reno Street, Suite 203  
Tampa, FL 33603  
(813) 289-4700  
Nicholas Stephenson, PE

**ARCHITECT/ENGINEER OF RECORD**

**A/E:**  
TRIPLE C - The A/E Group  
201 E. Jefferson Street, Suite 200  
Syracuse, NY 13202  
(315) 484-5958  
Mat Perkins

**TRIPLE C - THE A&E GROUP**  
A MULTI-DISCIPLINE COMPANY

**Office of Construction and Facilities Management**  
 U.S. Department of Veterans Affairs

**Drawing Title**  
LIGHT GAUGE STUD DETAILS

**Approved:**

**Phase**  
ISSUED FOR CONSTRUCTION

FULLY SPRINKLERED

**Project Title**  
NEW COMMUNITY LIVING CENTER

**Location**  
2094 Albany Post Road, Montrose, NY 10548

**Issue Date**  
05/09/2022

**Checked**  
WCW

**Drawn**  
SIR

**Project Number**  
620-334

**Building Number**  
CLC

**Drawing Number**  
S-501