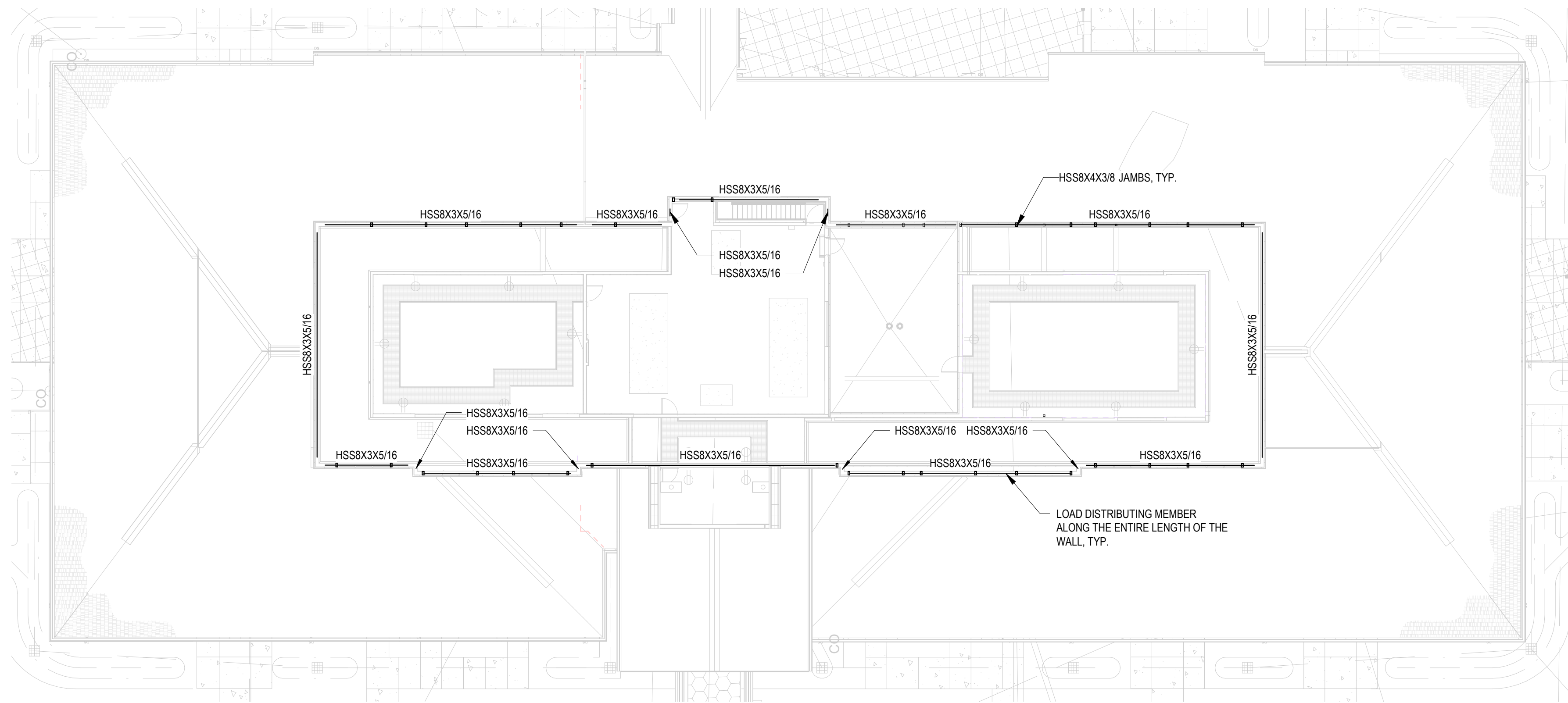


A
B
C
D
E
F

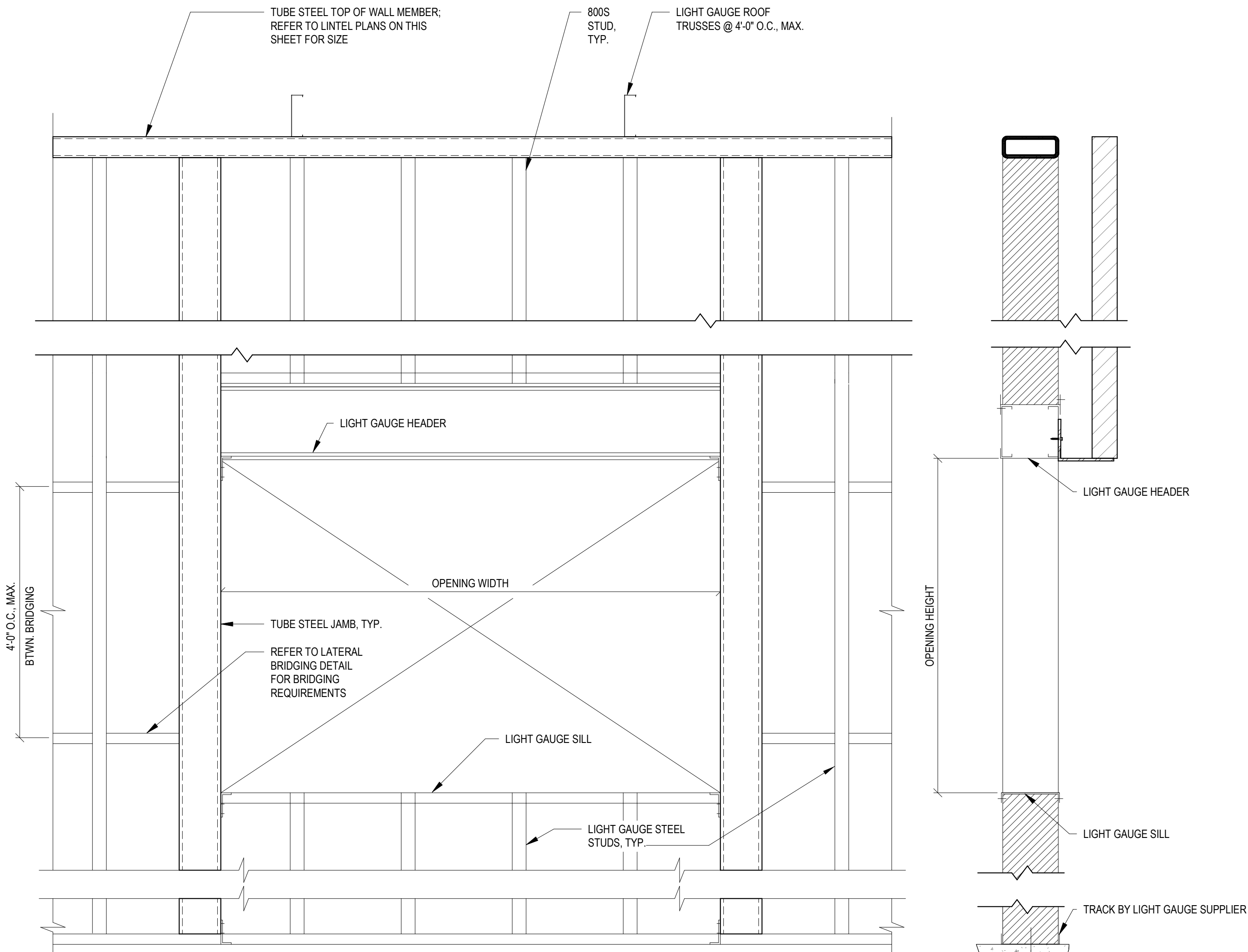


FLOOR FRAMING & LOW ROOF
FRAMING LINTEL PLAN
1/16" = 1'-0"



HIGH ROOF FRAMING LINTEL PLAN
1/16" = 1'-0"

OVERALL LINTEL PLAN NOTES:
1. REFER TO LINTEL SCHEDULE AND NOTES ON THIS SHEET.
2. ALL LINTEL LOCATIONS ARE APPROXIMATE. REFER TO ARCH., MECHANICAL, ELECTRICAL, AND PLUMBING DRAWINGS FOR LOCATIONS AND ELEVATIONS.
3. ALL OPENINGS GREATER THAN 12" WIDE IN MASONRY REQUIRE A LINTEL. ANY UNIDENTIFIED LINTEL SHOULD BE BROUGHT TO THE ATTENTION OF THE COR SO THAT IT CAN BE PROPERLY SIZED.
4. LINTELS LESS THAN 2'-6" ARE NOT SHOWN ON PLAN BUT ARE REQUIRED AND ARE TO BE PROVIDED BY THE GENERAL CONTRACTOR. THE GENERAL CONTRACTOR SHALL COORDINATE WITH ALL OTHER TRADES FOR REQUIRED LOCATIONS. REFER TO LINTEL SCHEDULE FOR REQUIRED LINTEL SIZE.
5. LINTELS INDICATED ARE FOR MASONRY WALLS ONLY. LINTELS FOR LIGHT GAUGE WALL ARE THE RESPONSIBILITY OF THE LIGHT GAUGE SUPPLIERS ENGINEER, AND SHALL BE DESIGNED PER THE PROJECT SPECIFICATIONS AND BLAST LOADING SECTION ON SHEET S-301. HOT ROLLED STRUCTURAL STEEL JAMBS WERE DESIGNED BY BLAST CONSULTANT AND WERE PROVIDED FOR WINDOW AND DOOR OPENINGS TO RESIST BLAST LOADS FOR A BASIS OF DESIGN. REFER TO BLAST CONSULTANT NARRATIVE. LIGHT GAUGE SUPPLIERS ENGINEER SHALL DESIGN CONNECTION OF HEADERS AND SILLS TO THE PROVIDED JAMBS PER PROJECT SPECIFICATIONS.
6. A 1/4" THK. 48" W x 6" H BENT PLATE SHALL BE PROVIDED TO SUPPORT ALL BRICK VENEER AND FASTEN BACK TO THE LIGHT GAUGE HEADERS WITH A #12 TEK SCREWS AT 8" O.C.



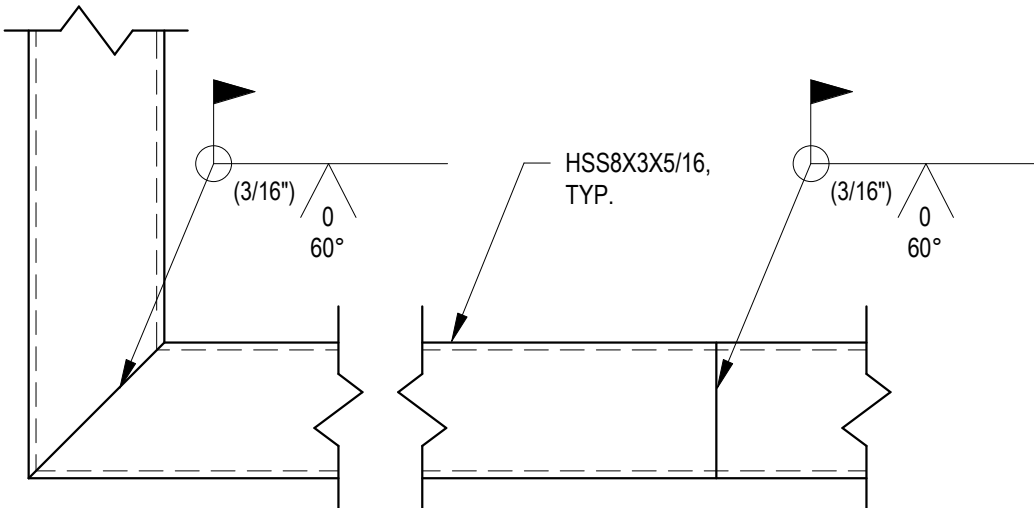
NOTES:
1. REFER TO ARCH. DRAWINGS FOR OPENING SIZES AND LOCATIONS.
2. ALL LIGHT GAUGE STEEL CLIPS, CONNECTORS, BRIDGING AND OTHER PRODUCTS REFERENCED ARE BY THE STEEL NETWORK, INC. AND DIETRICH METAL FRAMING.
3. LIGHT GAUGE SUPPLIERS ENGINEER IS RESPONSIBLE FOR THE DESIGN AND ATTACHMENT OF ALL LIGHT GAUGE AND THE CONNECTIONS BACK TO THE SUPPORTING STRUCTURAL.

(ELEVATION)

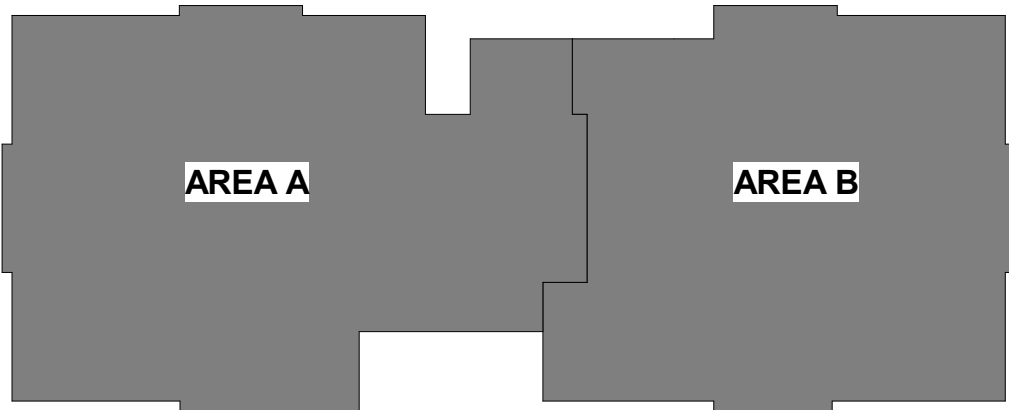
(SECTION)

TYPICAL METAL STUD WALL
DETAIL
1" = 1'-0"

METAL STUD WALL FRAMING SCHEDULE		
MEMBER	DIAGRAMS	NOTES
	SECTION	
JAMB		HOT ROLLED TUBE SECTION; REFER TO LINTEL PLANS FOR DETAILS
SILL		SILL TRACK SECTION OR COMBINED SECTION BY LIGHT GAUGE SUPPLIER
HEADER		BOX HEADER BY LIGHT GAUGE SUPPLIER; BENT PLATE FOR VENEER SUPPORT #12 TEK SCREW @ 6" O.C.



TYPICAL LOAD DISTRIBUTING
SPLICE
1/12" = 1'-0"



Revisions:	Date:

CONSULTANT

NORRIS DESIGN
Landscape Architect
416 North Toole Avenue
Tucson, AZ 85711
(520) 622-9565
Josh Orth, PLA

HINMAN
Protective Design Specialist
240 West 35th St, Suite 1004
New York, NY 10001
(212) 967-4890
Corrine Tan, SE

C.S. Davidson, Inc.
Structural
315 West James Street, Suite 102
Lancaster, PA 17603
(717) 481-2991
Jason Vannoy, SE, PE

MES GROUP
MEP
550 North Rao Street, Suite 203
Tampa, FL 33602
(813) 289-4700
Nicholas Stephenson, PE

ARCHITECT/ENGINEER OF RECORD

A/E:
TRIPLE C - The A/E Group
201 E. Jefferson Street, Suite 200
Syracuse, NY 13202
(315) 484-5958
Mat Perkins

TRIPLE C - THE A&E GROUP

A MULTI-DISCIPLINE COMPANY

STAMP

Office of Construction and Facilities Management

VA U.S. Department of Veterans Affairs

Drawing Title
LIGHT GAUGE STUD DETAILS

Approved:

Phase
ISSUED FOR CONSTRUCTION

FULLY SPRINKLERED

Project Title
NEW COMMUNITY LIVING CENTER

Location
2094 Albany Post Road, Montrose, NY 10548

Issue Date
05/09/2022

Checked
WCW

Drawn
SIR

Project Number
620-334

Building Number
CLC

Drawing Number
S-502