

DEDUCTIVE ALTERNATES:

(DEDUCTIVE ALTERNATES ARE CASCADING AND MUST BE EXERCISED IN THE ORDER PRESENTED) FOR A DETAILED DESCRIPTION OF EACH DEDUCTIVE ALTERNATE REFER TO COVER SHEET G1000

- DEDUCTIVE ALTERNATE #1: REDUCE WATER AND ICE SHIELD COVERAGE
- DEDUCTIVE ALTERNATE #2: ELIMINATE TUNNEL (EAST LEG)
- DEDUCTIVE ALTERNATE #3: ELIMINATE FAUX WINDOWS AT CLC EAST STORY
- DEDUCTIVE ALTERNATE #4: ELIMINATE WORK AT B6 CORRIDOR
- DEDUCTIVE ALTERNATE #5: ELIMINATE CONCRETE
- DEDUCTIVE ALTERNATE #6: ELIMINATE LANDSCAPE
- DEDUCTIVE ALTERNATE #7: REDUCE PLATFORM AT CHILLER
- DEDUCTIVE ALTERNATE #8: ELIMINATE MVR SECURITY
- DEDUCTIVE ALTERNATE #9: ELIMINATE LARGE PORCH
- DEDUCTIVE ALTERNATE #10: ELIMINATE SMALL PORCH A
- DEDUCTIVE ALTERNATE #11: ELIMINATE SMALL PORCH B
- DEDUCTIVE ALTERNATE #12: ELIMINATE ENTRANCE CANOPY
- DEDUCTIVE ALTERNATE #13: ELIMINATE FENCE / FAUX ROOFS AT RESIDENT ROOMS
- DEDUCTIVE ALTERNATE #14: ELIMINATE PATIENT LIFTS TRACK EXTENSIONS INTO RESIDENT RESTROOMS
- DEDUCTIVE ALTERNATE #15: REDUCE THE POROUS ASPHALT / PARKING / PORTION OF DRIVE ENTRANCE
- DEDUCTIVE ALTERNATE #16: ELIMINATE EXTERIOR SIGNAGE

A5 BASEMENT / TUNNEL SECTION

1/4" = 1'-0"

A8 TUNNEL SECTION, TYP.

1/4" = 1'-0"

ARCHITECTURAL SYMBOL LEGEND

- PROPOSED EXTERIOR WALL. SEE WALL SECTIONS
- INTERIOR STUD FRAMED WALL. SEE WALL TYPES
- AREA OF NO WORK, FACILITY TO REMAIN OPERATIONAL
- 1 HR FIRE RATED PARTITION
- 2 HR FIRE RATED PARTITION
- SMOKE RATED PARTITION / SMOKE BARRIER / COMPARTMENT
- 1 HR FIRE AND SMOKE BARRIER
- 2 HR FIRE AND SMOKE BARRIER
- VAVA ITEM - VA SUPPLIED & INSTALLED
- VA/CC OR VC ITEM - VA SUPPLIED & CONTRACTOR INSTALLED
- CC/CC ITEM - CONTRACTOR SUPPLIED & INSTALLED
- A1000 FURNITURE, FIXTURE, & EQUIPMENT INDICATOR
- MATCHLINE
- EXPANSION JOINT
- DEDUCTIVE ALTERNATE
- FOUNDATION DRAIN - SEE CIVIL

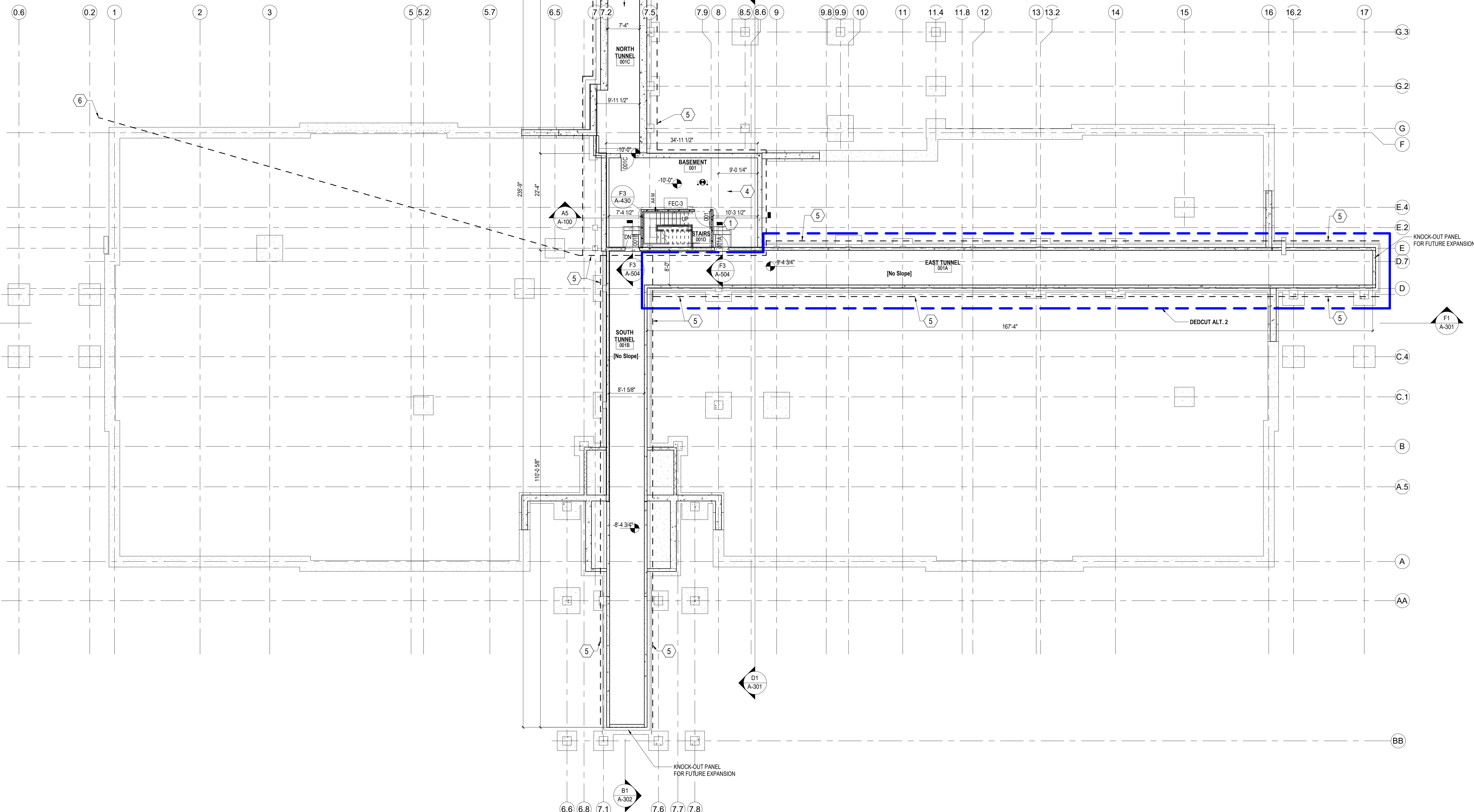
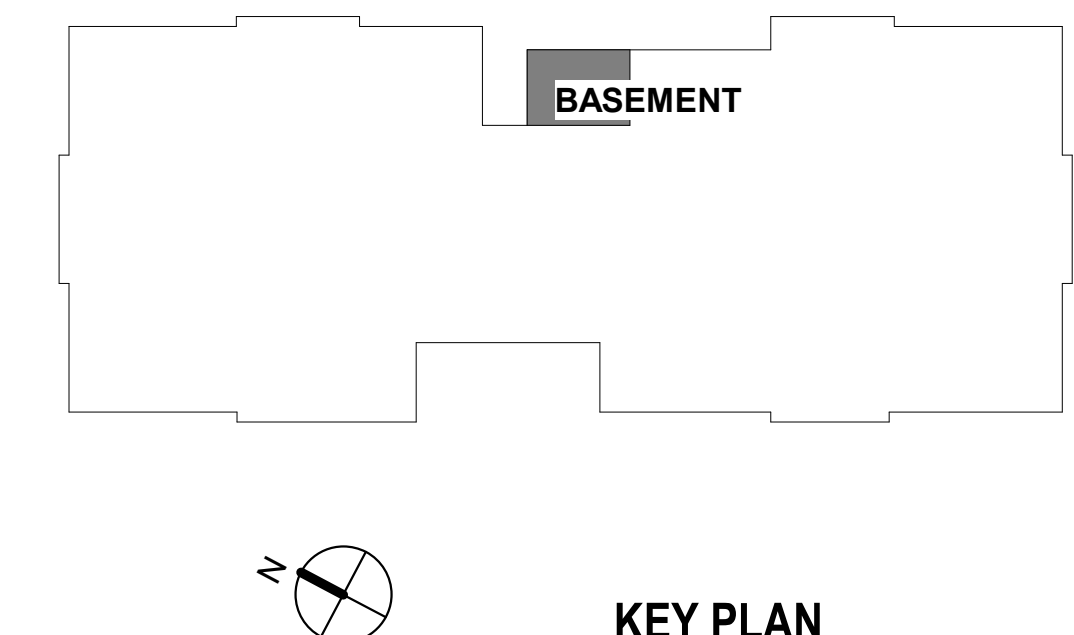
GENERAL SHEET NOTES

- A. CONTRACTOR TO COORDINATE WITH ROOF INSTALLATION WARRANTY REQUIREMENTS FOR ANY MODIFICATIONS TO ROOFING TO ENSURE NO VIOLATIONS OCCUR OF THE WARRANTY. CONTRACTOR TO EMPLOY A CERTIFIED ROOFING INSPECTOR MEETING THE REQUIREMENTS OF THE INSTALLED ROOF. ALL WARRANTY VIOLATIONS WILL BE REQUIRED TO BE CORRECTED PRIOR TO CLOSE OUT.
- B. CONTRACTOR TO VALIDATE AND VERIFY ALL FIRE RATED AND/OR SMOKE RATED WALLS AND ASSEMBLIES INDICATED ON PLANS IN WORK AREA. PROVIDE ALL PIPING PENETRATIONS OF FIRE, SMOKE AND FULL HEIGHT WALLS SHALL BE CAULKED AIRTIGHT TO THE ADJACENT STRUCTURE BY MEANS OF U.L. APPROVED FIRE PROOF CAULKING MATERIAL. SEE MECHANICAL AND PLUMBING DRAWINGS FOR ADDITIONAL INFORMATION.
- C. CONTRACTOR SHALL COORDINATE ALL PIPING, PLUMBING, AND CONDUIT PIPING WITH STRUCTURAL, MECHANICAL, AND ELECTRICAL SYSTEMS AND SHALL PROVIDE NECESSARY OFFSETS TO AVOID CONFLICTS AND TO MAINTAIN REQUIRED EQUIPMENT ACCESS AND SERVICEABILITY.
- D. EXISTING CONDITIONS ARE BASED ON EXISTING PLANS AND FIELD VERIFICATION WHERE FEASIBLE. ACTUAL CONDITIONS MAY DIFFER FROM THOSE INDICATED. CONTRACTOR TO FIELD VERIFY IN ADVANCE THE LOCATION AND CONDITION OF THOSE EXISTING SYSTEMS SHOWN TO BE MODIFIED OR REMOVED. CONTRACTOR TO NOTIFY ARCHITECT SHOULD CONDITIONS BE FOUND TO DIFFER SIGNIFICANTLY FROM CONSTRUCTION DOCUMENTS.
- E. CONTRACTOR TO COORDINATE ALL NEW EQUIPMENT LOCATIONS WITH ALL TRADES PRIOR TO INSTALLATION.
- F. CONTRACTOR TO PROVIDE GALVANIC PROTECTION AS REQUIRED AT CONNECTIONS BETWEEN ALL DISSIMILAR METALS.
- G. ANY FLOOR, WALL, OR CEILING CUTTING OR FILLING THAT IS REQUIRED TO COMPLETE THIS PROJECT, THE CONTRACTOR SHALL PATCH AND PAINT AND RETURN TO MATCH EXISTING CONDITIONS AND FINISHES.
- H. CONTRACTOR TO PROVIDE ESCUTCHEONS ON ALL NEW EXPOSED EXTERIOR PIPE PENETRATIONS AND SEAL COMPLETELY.
- I. CONTRACTOR TO PROVIDE TEMPORARY FLOORING WHILE MODIFYING SUBFLOORING.
- J. ANY LANDSCAPE, HARDSCAPE, FIXTURE, SIGNAGE AND SYSTEMS OR PEDESTRIAN CONTROL DEVICES WITHIN THE TEMPORARY ACCESSIBLE PATHWAY SHALL BE PROTECTED IN PLACE OR TEMPORARILY RELOCATED AS NECESSARY FOR CONTINUED UNINTERRUPTED OPERATION, ACCESS, MAINTENANCE AND / OR VISIBILITY.

KEYNOTES

- 1 MECHANICAL UNIT. SEE MECHANICAL DRAWINGS FOR MORE INFORMATION
- 2 LINE OF ROADWAY ABOVE
- 3 HEIGHT TRANSITION AT TUNNEL CEILING
- 4 5" CONC HOUSEKEEPING PAD. COORD SIZE W/ FINAL SELECTED EQUIPMENT. PAINT SAFETY YELLOW.
- 5 FOUNDATION DRAIN. PROVIDE AT PERIMETER OF TUNNEL AND BASEMENT; REFER TO CIVIL SHEET CUI02
- 6 FOUNDATION DRAIN CONNECTION TO SITE DRAINAGE, SEE CIVIL

KEY PLAN



F1 ARCHITECTURAL OVERALL BASEMENT & TUNNEL FLOOR PLAN

3/32" = 1'-0"

CONSULTANT

NORRIS DESIGN
Landscape Architect
416 North Toole Avenue
Tucson, AZ 85711
(520) 622-9565
Josh Orth, PLA

HINMAN
Protective Design Specialist
240 West 35th St, Suite 1004
New York, NY 10001
(212) 967-4890
Corrine Tan, SE

C.S. Davidson, Inc.
Structural
515 West James Street, Suite 102
Lancaster, PA 17603
(717) 481-2991
Jason Vannoy, SE, PE

MES GROUP
MEP
550 North Reo Street, Suite 203
Tampa, FL 33602
(813) 289-4700
Nicholas Stephenson, PE

ARCHITECT/ENGINEER OF RECORD

A/E:
TRIPLE C - THE A/E Group
201 E. Jefferson Street, Suite 200
Syracuse, NY 13202
(315) 484-5958
Mat Perkins

TRIPLE C - THE A/E GROUP
A MULTI-DISCIPLINE COMPANY

STAMP



Office of
Construction
and Facilities
Management

VA U.S. Department
of Veterans Affairs

Drawing Title
ARCHITECTURAL OVERALL BASEMENT & TUNNEL
FLOOR PLAN

Approved:

Phase
ISSUED FOR
CONSTRUCTION

FULLY SPRINKLERED

Project Title NEW COMMUNITY LIVING CENTER	Project Number 620-334
Location 2094 Albany Post Road, Montrose, NY 10548	Building Number CLC
Issue Date 05/09/2022	Drawing Number A-100
Checked M. PERKINS	Drawn N. BLANCHARD