

A

B

C

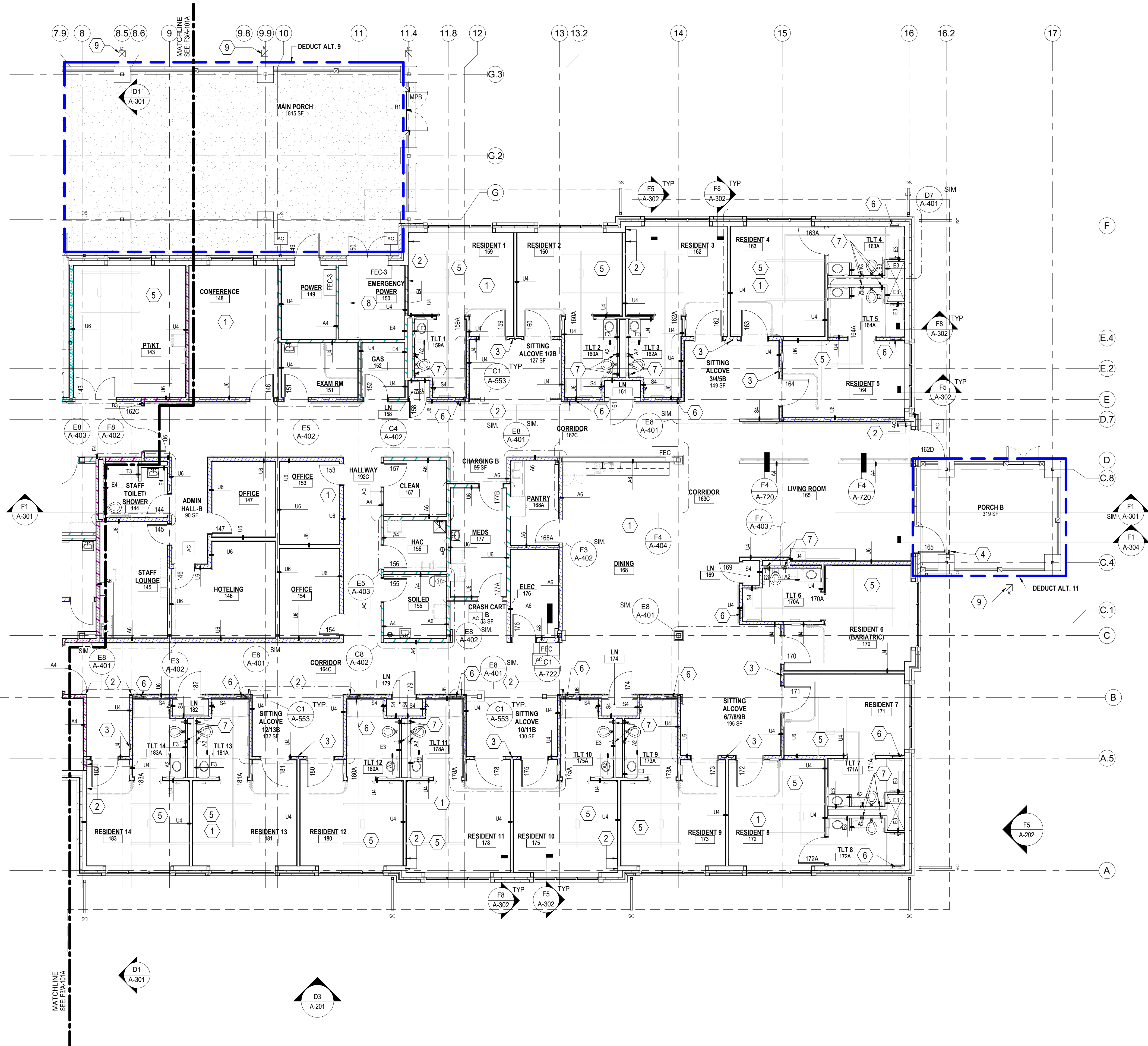
D

E

F

7/21/2021 3:47:01 PM

BM 360-620-334 New Community Living Center/620-334 C.C. Arch v1



F4 ARCHITECTURAL FLOOR PLAN - LEVEL 1 - AREA B  
1/8" = 1'-0"

ARCHITECTURAL SYMBOL LEGEND

- PROPOSED EXTERIOR WALL. SEE WALL SECTIONS
- INTERIOR STUD FRAMED WALL. SEE WALL TYPES
- AREA OF NO WORK, FACILITY TO REMAIN OPERATIONAL
- 1 HR FIRE RATED PARTITION
- 2 HR FIRE RATED PARTITION
- SMOKE RATED PARTITION / SMOKE BARRIER / COMPARTMENT
- 1 HR FIRE SHAFT PARTITION
- 1 HR FIRE AND SMOKE BARRIER
- 2 HR FIRE AND SMOKE BARRIER
- VAVA ITEM - VA SUPPLIED & INSTALLED
- VA/CC OR VC ITEM - VA SUPPLIED & CONTRACTOR INSTALLED
- CC/CC ITEM - CONTRACTOR SUPPLIED & INSTALLED
- FIRE EXTINGUISHER CABINETS  
FEC RECESSED. SEE (C6/A-722)  
FEC-3 SURFACE MNT. SEE (C6/A-731)
- FURNITURE, FIXTURE, & EQUIPMENT INDICATOR
- DOWNSPOUT / RAINCHAIN
- MATCHLINE
- EXPANSION JOINT
- DEDUCTIVE ALTERNATE

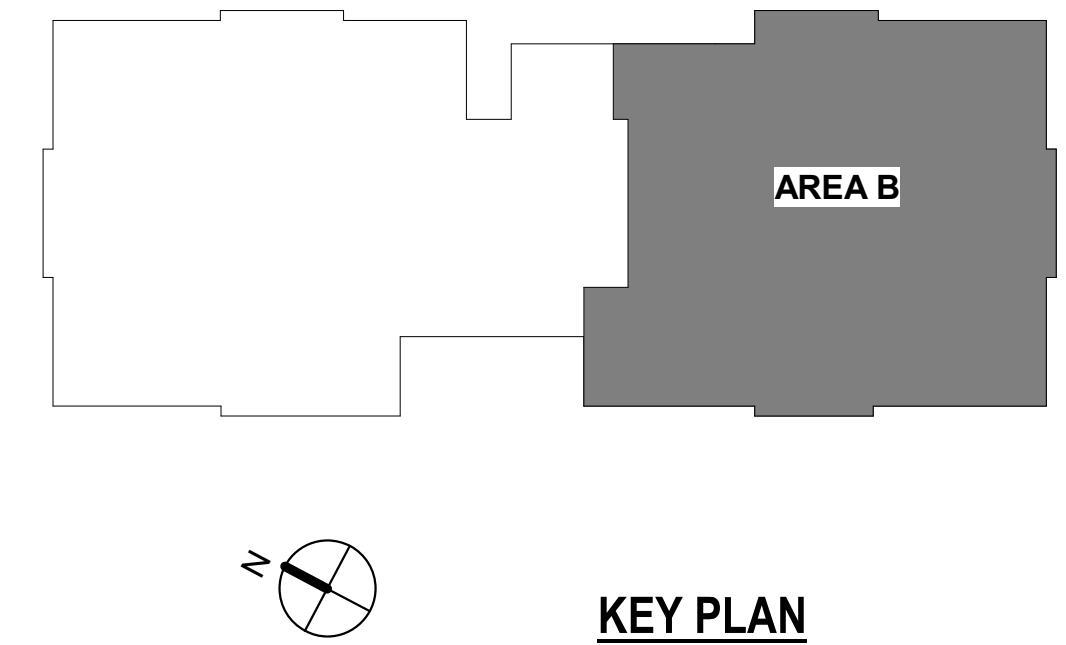
GENERAL SHEET NOTES

- A. REFER TO A-001 FOR TYPICAL ARCHITECTURAL SYMBOLS, ABBREVIATIONS, DIMENSIONING PROTOCOLS, AND OTHER NOTES RELATED TO INTERPRETING THE DOCUMENTS.
- B. CONTRACTOR TO VALIDATE AND VERIFY ALL FIRE RATED AND/OR SMOKE RATED WALLS AND ASSEMBLIES INDICATED ON PLANS IN WORK AREA. PROVIDE ALL PIPING PENETRATIONS OF FIRE, SMOKE AND FULL HEIGHT WALLS SHALL BE CAULKED AIRTIGHT TO THE ADJACENT STRUCTURE BY MEANS OF U.L. APPROVED FIRE PROOF CAULKING MATERIAL. SEE MECHANICAL AND PLUMBING DRAWINGS FOR ADDITIONAL INFORMATION. CONTRACTOR SHALL COORDINATE ALL PIPING, PLUMBING, AND CONDUIT PIPING WITH STRUCTURAL, MECHANICAL, AND ELECTRICAL SYSTEMS AND SHALL PROVIDE NECESSARY OFFSETS TO AVOID CONFLICTS AND TO MAINTAIN REQUIRED EQUIPMENT ACCESS AND SERVICEABILITY.
- C. EXISTING CONDITIONS ARE BASED ON EXISTING PLANS AND FIELD VERIFICATION WHERE FEASIBLE. ACTUAL CONDITIONS MAY DIFFER FROM THOSE INDICATED. CONTRACTOR TO FIELD VERIFY IN ADVANCE THE LOCATION AND CONDITION OF THOSE EXISTING SYSTEMS SHOWN TO BE MODIFIED OR REMOVED. CONTRACTOR TO NOTIFY ARCHITECT SHOULD CONDITIONS BE FOUND TO DIFFER SIGNIFICANTLY FROM CONSTRUCTION DOCUMENTS.
- D. CONTRACTOR TO COORDINATE ALL NEW EQUIPMENT LOCATIONS WITH ALL TRADES PRIOR TO INSTALLATION. CONTRACTOR TO PROVIDE GALVANIC PROTECTION AS REQUIRED AT CONNECTIONS BETWEEN ALL DISSIMILAR METALS.
- E. ANY FLOOR, WALL, OR CEILING CUTTING OR FILLING THAT IS REQUIRED TO COMPLETE THIS PROJECT, THE CONTRACTOR SHALL PATCH AND PAINT AND RETURN TO MATCH EXISTING CONDITIONS AND FINISHES.
- F. CONTRACTOR TO PROVIDE ESCUTCHEONS ON ALL NEW EXPOSED EXTERIOR PIPE PENETRATIONS AND SEAL COMPLETELY.
- G. CONTRACTOR TO PROVIDE TEMPORARY FLOORING WHILE MODIFYING SUBFLOORING.
- H. ANY LANDSCAPE, HARDSCAPE, FIXTURE, SIGNAGE AND SYSTEMS OR PEDESTRIAN CONTROL DEVICES WITHIN THE TEMPORARY ACCESSIBLE PATHWAY SHALL BE PROTECTED IN PLACE OR TEMPORARILY RELOCATED AS NECESSARY FOR CONTINUED UNINTERRUPTED OPERATION, ACCESS, MAINTENANCE AND / OR VISIBILITY.
- I. REFER TO A-101, A-101A, AND A-101B FOR ARCHITECTURAL NOTES, COORDINATION AND LOCATION OF ENLARGED DRAWINGS, DETAILS, AND SECTIONS.
- J. REFER TO A-111A AND A-111B FOR DETAILED ARCHITECTURAL DIMENSIONS OF INTERIOR AND EXTERIOR ELEMENTS.
- K. FINISHES, FURNITURE AND FURNISHINGS ARE NOT SHOWN ON ARCHITECTURAL PLANS FOR CLARITY. REFER TO INTERIOR PLANS FOR FINISH AND FURNISHING INFORMATION.

KEYNOTES

- 1 FURNITURE IS HIDDEN FOR CLARITY. REFER TO FURNITURE PLANS FOR ADDITIONAL INFORMATION.
- 2 ALIGN FACE OF WALL FINISHES. COORDINATE WITH PARTITION TYPES AND STUD FRAMING.
- 3 RECESSED DISPLAY CASE. TYP ALL SITTING ALCOVE AREAS; REFER TO INTERIOR SHEETS FOR MORE INFORMATION.
- 4 PEDESTAL FOR DOOR PUSH PLATE AND CARD READER. SEE ELECTRICAL FOR MORE INFORMATION.
- 5 DEDUCTIVE ALTERNATE 14; REFER TO RCP SHEETS FOR PATIENT LIFT BOUNDARY INFORMATION.
- 6 STEEL SUPPORTS FOR SHOWER SEAT SUPPORT SEE A1 & A3/A-554
- 7 STEEL SUPPORTS FOR UP-SWING GRAB BAR SEE E1/A-554
- 8 5" CONC HOUSEKEEPING PAD. COORD SIZE W/ FINAL SELECTED EQUIPMENT. PAINT SAFETY YELLOW.
- 9 RAIN CHAIN AND ANCHOR

KEY PLAN



KEY PLAN

DEDUCTIVE ALTERNATES:

- (DEDUCTIVE ALTERNATES ARE CASCADING AND MUST BE EXERCISED IN THE ORDER PRESENTED) FOR A DETAILED DESCRIPTION OF EACH DEDUCTIVE ALTERNATE REFER TO COVER SHEET G000
- DEDUCTIVE ALTERNATE #1: REDUCE WATER AND ICE SHIELD COVERAGE
- DEDUCTIVE ALTERNATE #2: ELIMINATE TUNNEL (EAST LEG)
- DEDUCTIVE ALTERNATE #3: ELIMINATE FAUX WINDOWS AT CLEARSTORY
- DEDUCTIVE ALTERNATE #4: ELIMINATE WORK AT B6 CORRIDOR
- DEDUCTIVE ALTERNATE #5: ELIMINATE CONCRETE
- DEDUCTIVE ALTERNATE #6: ELIMINATE LANDSCAPE
- DEDUCTIVE ALTERNATE #7: REDUCE PLATFORM AT CHILLER
- DEDUCTIVE ALTERNATE #8: ELIMINATE NVR SECURITY
- DEDUCTIVE ALTERNATE #9: ELIMINATE LARGE PORCH
- DEDUCTIVE ALTERNATE #10: ELIMINATE SMALL PORCH A
- DEDUCTIVE ALTERNATE #11: ELIMINATE SMALL PORCH B
- DEDUCTIVE ALTERNATE #12: ELIMINATE ENTRANCE CANOPY
- DEDUCTIVE ALTERNATE #13: ELIMINATE FENCE FAUX ROOFS AT RESIDENT ROOMS
- DEDUCTIVE ALTERNATE #14: ELIMINATE PATIENT LIFTS TRACK EXTENSIONS INTO RESIDENT RESTROOMS
- DEDUCTIVE ALTERNATE #15: REDUCE THE POROUS ASPHALT / PARKING / PORTION OF DRIVE ENTRANCE
- DEDUCTIVE ALTERNATE #16: ELIMINATE EXTERIOR SIGNAGE

CONSULTANT

**NORRIS DESIGN**  
Landscape Architect  
416 North Toole Avenue  
Tucson, AZ 85701  
(520) 622-9565  
Josh Orth, PLA

**HINMAN**  
Protective Design Specialist  
240 West 35th St, Suite 1004  
New York, NY 10001  
(212) 967-4890  
Corrine Tan, SE

**C.S. Davidson, Inc.**  
Structural  
315 West James Street, Suite 102  
Lancaster, PA 17603  
(717) 481-2991  
Jason Vannoy, SE, PE

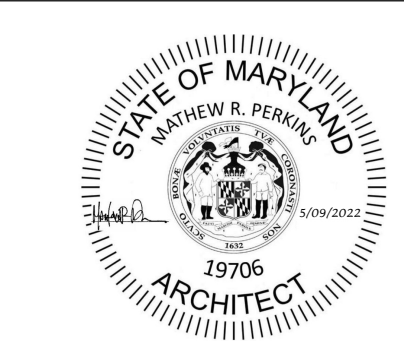
**MES GROUP**  
MEP  
550 North Reno Street, Suite 203  
Tampa, FL 33609  
(813) 289-4700  
Nicholas Stephenson, PE

ARCHITECT/ENGINEER OF RECORD

A/E:  
TRIPLE C - The A/E Group  
201 E. Jefferson Street, Suite 200  
Syracuse, NY 13202  
(315) 484-5958  
Mat Perkins

TRIPLE C - THE A/E GROUP  
A MULTI-DISCIPLINE COMPANY

STAMP



Office of  
Construction  
and Facilities  
Management

VA U.S. Department  
of Veterans Affairs

Drawing Title

ARCHITECTURAL FLOOR PLAN - LEVEL 1 - AREA B

Approved:

Phase

ISSUED FOR  
CONSTRUCTION

FULLY SPRINKLERED

Project Title

NEW COMMUNITY LIVING  
CENTER

Location

2094 Albany Post Road, Montrose, NY 10548

Issue Date

05/09/2022

Checked

M. PERKINS

Drawn

N. BLANCHARD

Project Number

620-334

Building Number

CLC

Drawing Number

A-101B