

REFLECTED CEILING PLAN NOTES:

- ALL CEILING TO BE 9'-0" AFF UNLESS NOTED OTHERWISE.
- PROVIDED GYPSUM WALL BOARD & STUD BULKHEADS WHERE CEILING OF DIFFERENT HEIGHTS ADJ. DO NOT BUILD BULKHEADS OF ACoustical CEILING MATERIAL UNLESS SPECIFICALLY DETAILED.
- REFER TO MECHANICAL DRAWINGS FOR QUANTITY AND TYPE OF DIFFUSERS, RETURN AIR GRILLES, & EXHAUST GRILLES. SCRIBE CEILING MATERIAL CAREFULLY FOR A TIGHT FIT.
- REFER TO ELECTRICAL DRAWINGS FOR QUANTITY AND TYPES OF LIGHTS AND DEVICES. SCRIBE CEILING MATERIAL CAREFULLY FOR TIGHT FIT.
- REFER TO FIRE PROTECTION DRAWINGS FOR FIRE SPRINKLER HEAD LOCATIONS. CENTER HEADS IN CEILING TILE AND SCRIBE CEILING MATERIALS FOR A TIGHT FIT.
- REFER TO ROOM FINISH SCHEDULE ON SHEET IN001 FOR CEILING FINISH INFORMATION.
- VERIFY CEILING HEIGHTS WITH STRUCTURE, MECHANICAL, PLUMBING, FIRE PROTECTION, ELECTRICAL AND CONTRACTORS REQUIRED COORDINATION DRAWINGS.
- ALL GWB SOFFITS, CEILINGS & BULKHEADS RECEIVE PAINT OR IF ALIGNING W/ ADJACENT WALL, PAINT P-2 UNO AT VERTICAL, PAINT AT UNDERSIDE.

ARCHITECTURAL SYMBOL LEGEND

- PROPOSED EXTERIOR WALL. SEE WALL SECTIONS
- INTERIOR STUD FRAMED WALL. SEE WALL TYPES
- AREA OF NO WORK, FACILITY TO REMAIN OPERATIONAL
- 1 HR FIRE RATED PARTITION
- 2 HR FIRE RATED PARTITION
- SMOKE RATED PARTITION / SMOKE BARRIER / COMPARTMENT
- 1 HR FIRE AND SMOKE BARRIER
- 2 HR FIRE AND SMOKE BARRIER
- VA/VC ITEM - VA SUPPLIED & INSTALLED
- VA/CC OR VC ITEM - VA SUPPLIED & CONTRACTOR INSTALLED
- CO/CC ITEM - CONTRACTOR SUPPLIED & INSTALLED
- FURNITURE, FIXTURE, & EQUIPMENT INDICATOR
- DOWNSPOUT
- MATCHLINE
- DEDUCTIVE ALTERNATE
- EXPANSION JOINT

REFLECTED CEILING SYMBOLS

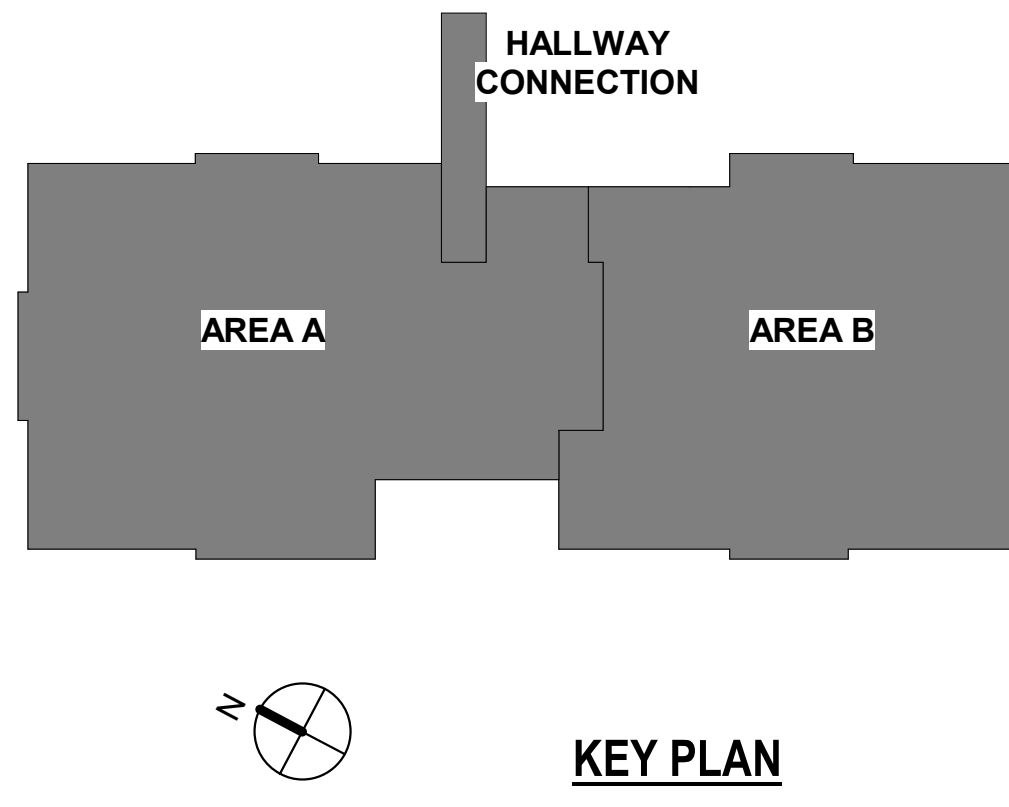
- ROOF SOFFIT
- (AT-1) ACOUSTICAL TILE CEILING (24x24)
- GYPSUM BOARD CEILING (PAINT: P-2 UNO)
- RECESSED LUMINAIRE (24x24)
- RECESSED LUMINAIRE (24x48) - SHADING INDICATES EMERGENCY LIGHT
- RECESSED OR SURFACE MOUNTED ROUND DOWNLIGHT LUMINAIRE CENTER IN CEILING TILE UNO. SHADING INDICATES EMERGENCY LIGHT
- PENDANT-MOUNTED LUMINAIRE - SHADING INDICATES EMERGENCY LIGHT
- WALL PACK
- LINEAR UPLIGHT LUMINAIRE, WALL MOUNTED OR SUSPENDED
- LINEAR SUSPENDED LUMINAIRE - SHADING INDICATES EMERGENCY LIGHT
- CEILING FAN WITH LIGHT KIT
- ACCESS PANEL
- (AT-2) SUSPENDED ACOUSTICAL BLADES
- SIDEWALL REGISTER OR GRILLE
- SMOKE DETECTOR
- HEAT DETECTOR
- SPEAKER
- OCCUPANCY SENSOR
- EXIT LIGHT
- HVAC SUPPLY DIFFUSER
- HVAC RETURN DIFFUSER
- HVAC EXHAUST DIFFUSER
- SPRINKLER
- CEILING MOUNTED PATIENT LIFT
- DEDUCT ALT. 14 CHANDELER
- WALL MOUNTED SCONCE
- WALL WASHER

KEYNOTES

- LINE DENOTES MECHANICAL PENTHOUSE LEVEL ABOVE
- OPEN TO ABOVE
- DECORATIVE ROOF MILLWORK AT SITTING ALCOVE ENTRY, TYP. SEE ENLARGED PLANS AND DETAILS FOR MORE DETAIL. DEDUCT ALT. 13
- TYPICAL GYPSUM WALLBOARD WRAPPED STRUCTURAL BEAMS TO BE PAINTED P-2; SEE IN001 FOR MORE INFORMATION
- AT-2 ACOUSTICAL BLADES DIRECT MOUNTED TO ACOUSTICAL CEILING. REFER TO SPECIFICATIONS AND DETAILS FOR MORE INFORMATION.
- AT-2 ACOUSTICAL BLADES GRID MOUNTED WITH AIRCRAFT CABLE AT OPEN TO ABOVE AREA. REFER TO SPECIFICATIONS AND DETAILS FOR MORE INFORMATION.
- PATIENT LIFT. COORDINATE POWER AND STRUCTURAL AS REQUIRED. DEDUCT ALT. 14. ELIMINATE PATIENT LIFTS EXCEPT AT BARIATRIC AND PT/KT ROOMS.
- STUCCO EXTERIOR - FINAL MATERIAL PREFERENCE TO BE VERIFIED BY OWNER.
- EXPANSION JOINT

DEDUCTIVE ALTERNATES:

- (DEDUCTIVE ALTERNATES ARE CASCADING AND MUST BE EXERCISED IN THE ORDER PRESENTED) FOR A DETAILED DESCRIPTION OF EACH DEDUCTIVE ALTERNATE REFER TO COVER SHEET 01000
- DEDUCTIVE ALTERNATE #1: REDUCE WATER AND ICE SHIELD COVERAGE
  - DEDUCTIVE ALTERNATE #2: ELIMINATE TUNNEL (EAST LEG)
  - DEDUCTIVE ALTERNATE #3: ELIMINATE FAUX WINDOWS AT CLEARSTORY
  - DEDUCTIVE ALTERNATE #4: ELIMINATE WORK AT B6 CORRIDOR
  - DEDUCTIVE ALTERNATE #5: ELIMINATE CONCRETE
  - DEDUCTIVE ALTERNATE #6: ELIMINATE LANDSCAPE
  - DEDUCTIVE ALTERNATE #7: REDUCE PLATFORM AT CHILLER
  - DEDUCTIVE ALTERNATE #8: ELIMINATE NVR SECURITY
  - DEDUCTIVE ALTERNATE #9: ELIMINATE LARGE PORCH
  - DEDUCTIVE ALTERNATE #10: ELIMINATE SMALL PORCH A
  - DEDUCTIVE ALTERNATE #11: ELIMINATE SMALL PORCH B
  - DEDUCTIVE ALTERNATE #12: ELIMINATE ENTRANCE CANOPY
  - DEDUCTIVE ALTERNATE #13: ELIMINATE FENCE/ FAUX ROOFS AT RESIDENT ROOMS
  - DEDUCTIVE ALTERNATE #14: ELIMINATE PATIENT LIFT TRACK EXTENSIONS INTO RESIDENT RESTROOMS
  - DEDUCTIVE ALTERNATE #15: REDUCE THE POROUS ASPHALT PARKING / PORTION OF DRIVE ENTRANCE
  - DEDUCTIVE ALTERNATE #16: ELIMINATE EXTERIOR SIGNAGE



F2 ARCHITECTURAL OVERALL REFLECTED CEILING PLAN - LEVEL 1  
3/32" = 1'-0"

<b>CONSULTANT</b> NORRIS DESIGN Landscape Architect 416 North Toole Avenue Tucson, AZ 85701 (520) 622-9565 Josh Orth, PLA		<b>HINMAN</b> Protective Design Specialist 240 West 35th St, Suite 1004 New York, NY 10001 (212) 967-4890 Corrine Tan, SE		<b>C.S. Davidson, Inc.</b> Structural 315 West James Street, Suite 102 Lancaster, PA 17603 (717) 481-2991 Jason Vannoy, SE, PE		<b>MES GROUP</b> MEP 550 North Rao Street, Suite 203 Tempe, AZ 85281 (602) 969-4700 Nicholas Stephenson, PE		<b>ARCHITECT/ENGINEER OF RECORD</b> A/E: TRIPLE C - The A/E Group 201 E. Jefferson Street, Suite 200 Syracuse, NY 13202 (315) 484-5958 Mat Perkins		<b>STAMP</b> OFFICE OF MARYLAND STATE OF MARYLAND DEPARTMENT OF GENERAL SERVICES ARCHITECT 12/07/2021		<b>Office of Construction and Facilities Management</b> VA U.S. Department of Veterans Affairs		<b>Drawing Title</b> ARCHITECTURAL OVERALL REFLECTED CEILING PLAN - LEVEL 1 <b>Approved:</b>		<b>Phase</b> ISSUED FOR CONSTRUCTION  FULLY SPRINKLERED		<b>Project Title</b> NEW COMMUNITY LIVING CENTER <b>Location</b> 2094 Albany Post Road, Montrose, NY 10548 <b>Issue Date</b> 05/09/2022		<b>Checked</b> H.GARDNER <b>Drawn</b> K. MCDERMOTT		<b>Project Number</b> 620-334 <b>Building Number</b> CLC <b>Drawing Number</b> AC101	
---	--	--	--	---	--	--	--	--	--	--	--	---	--	--	--	--	--	--	--	---	--	---	--