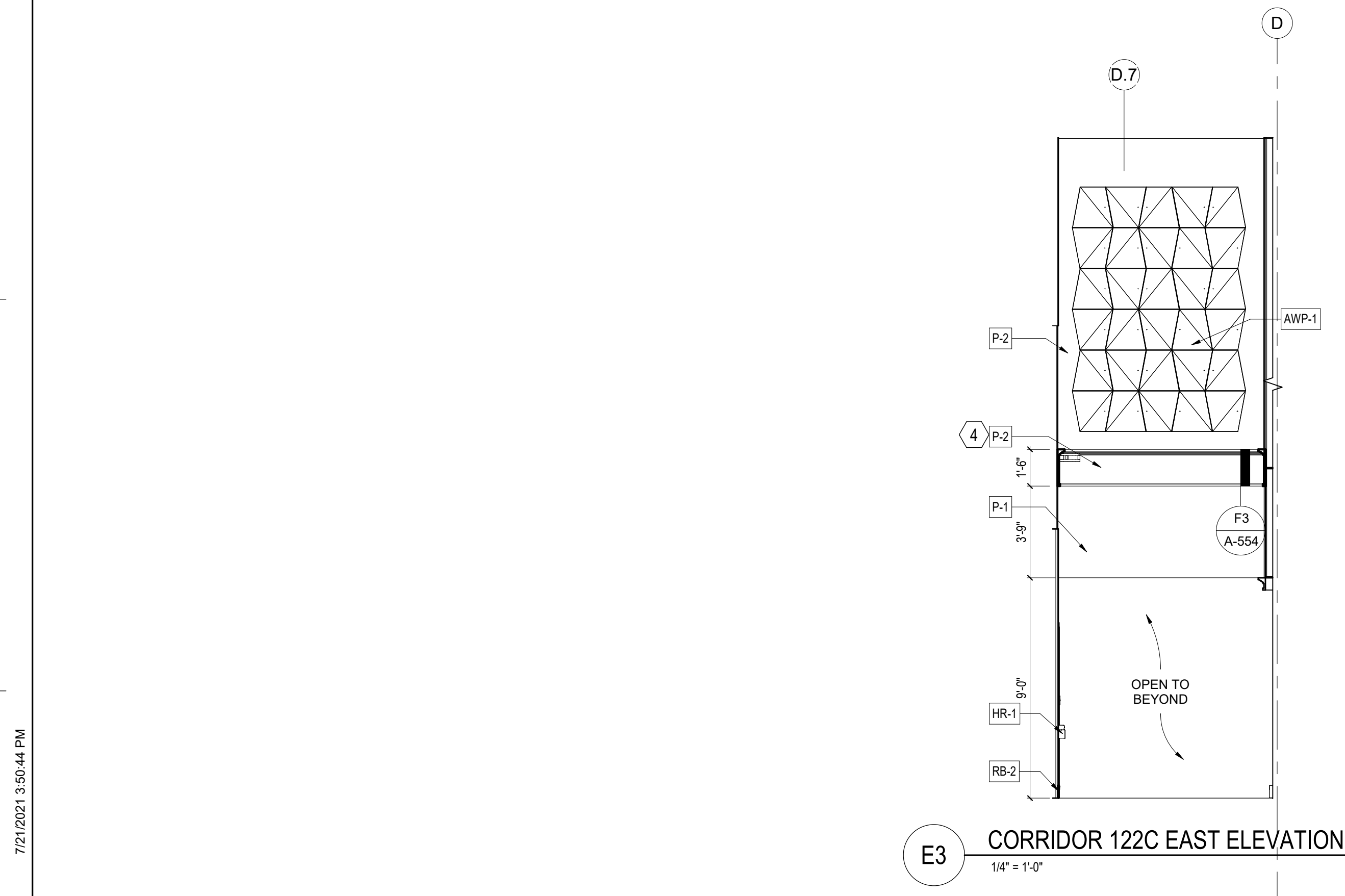
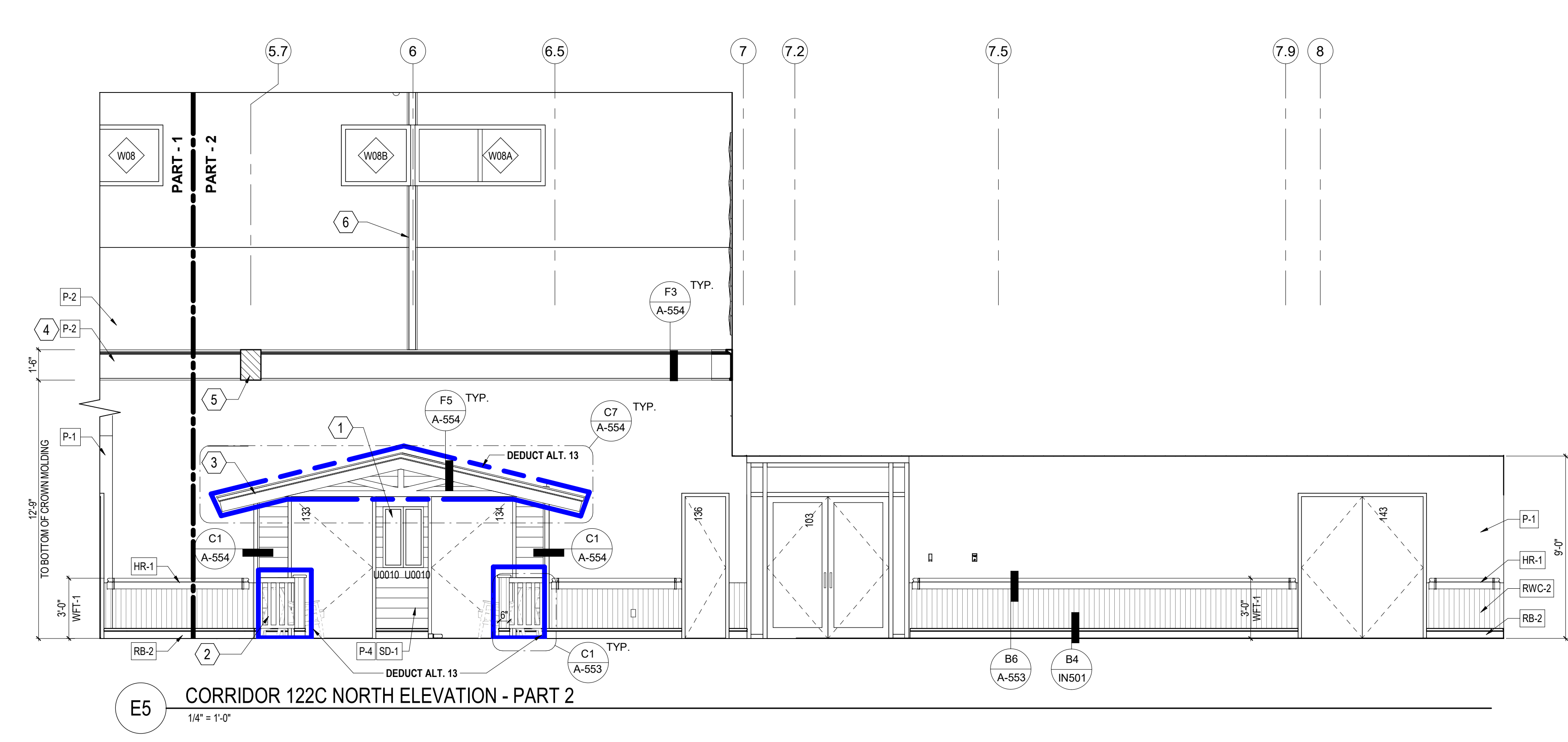


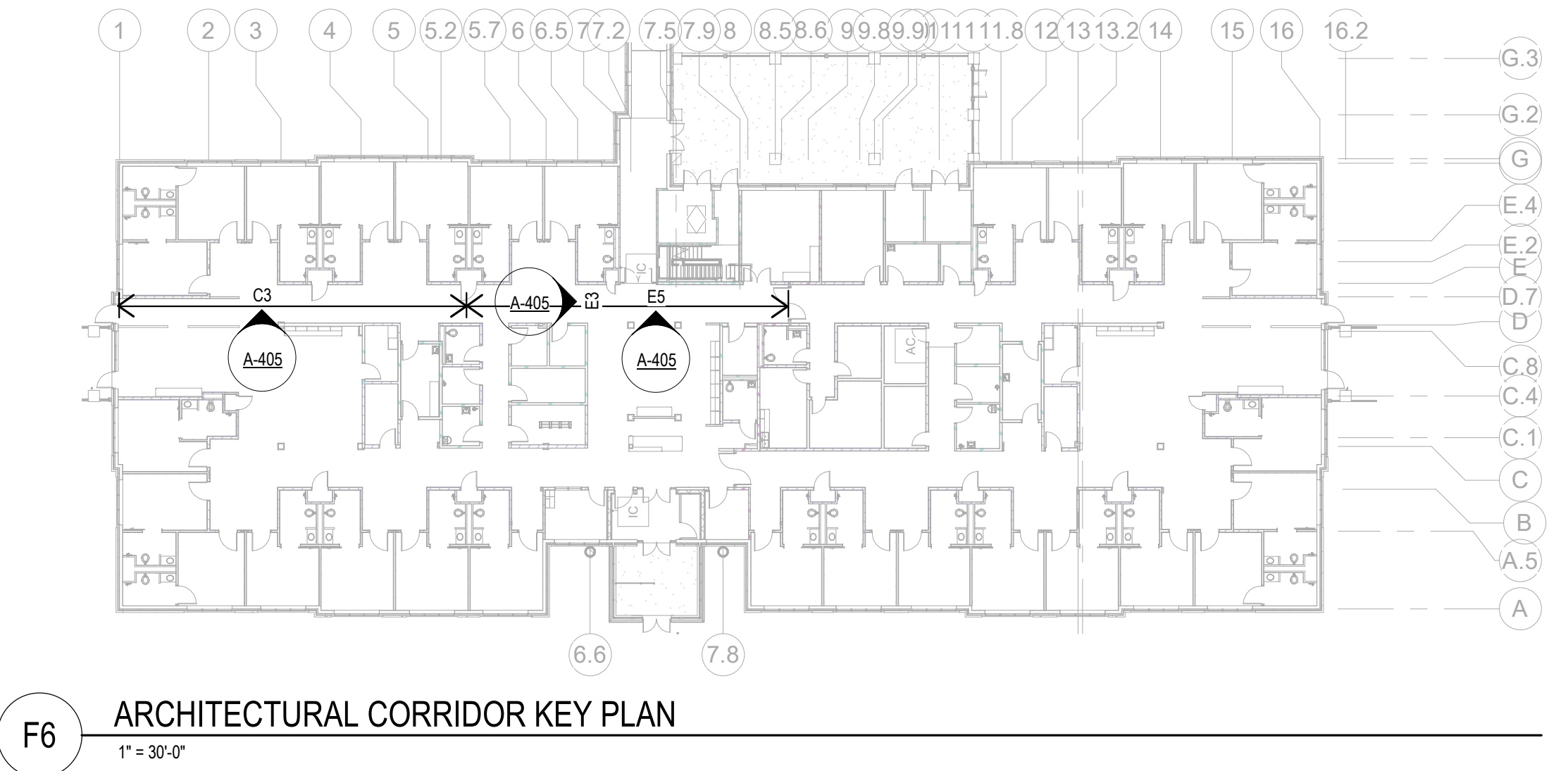
C3 CORRIDOR 122C NORTH ELEVATION - PART 1
1/4" = 1'-0"



E3 CORRIDOR 122C EAST ELEVATION
1/4" = 1'-0"



E5 CORRIDOR 122C NORTH ELEVATION - PART 2
1/4" = 1'-0"



F6 ARCHITECTURAL CORRIDOR KEY PLAN
1" = 30'-0"

ARCHITECTURAL SYMBOL LEGEND

| | |
|--|---|
| | PROPOSED EXTERIOR WALL. SEE WALL SECTIONS |
| | INTERIOR STUD FRAMED WALL. SEE WALL TYPES |
| | AREA OF NO WORK, FACILITY TO REMAIN OPERATIONAL |
| | 1 HR FIRE RATED PARTITION |
| | 2 HR FIRE RATED PARTITION |
| | SMOKE RATED PARTITION / SMOKE BARRIER / COMPARTMENT |
| | 1 HR FIRE AND SMOKE BARRIER |
| | 2 HR FIRE AND SMOKE BARRIER |
| | VAVA ITEM - VA SUPPLIED & INSTALLED |
| | VA/CC OR VC ITEM - VA SUPPLIED & CONTRACTOR INSTALLED |
| | CC/CC ITEM - CONTRACTOR SUPPLIED & INSTALLED |
| | A1000 FURNITURE, FIXTURE, & EQUIPMENT INDICATOR |
| | MATCHLINE |
| | EXPANSION JOINT |
| | DEDUCTIVE ALTERNATE |

KEYNOTES

- MB-1 RECESSED MEMORY BOX. REFER TO INTERIOR FINISH SPECIFICATIONS AND DETAILS.
- RAILING AS DETAILED; DEDUCT ALT. 13
- DECORATIVE ROOF ELEMENT AS DETAILED. DEDUCT ALT. 13
- CROWN MOLDING
- QWB ENCLOSED STRUCTURAL BEAMS. SEE RCP.
- EXPANSION JOINT

DEDUCTIVE ALTERNATES:

- (DEDUCTIVE ALTERNATES ARE CASCADING AND MUST BE EXERCISED IN THE ORDER PRESENTED) FOR A DETAILED DESCRIPTION OF EACH DEDUCTIVE ALTERNATE REFER TO COVER SHEET 62000
- DEDUCTIVE ALTERNATE #1: REDUCE WATER AND ICE SHIELD COVERAGE
 - DEDUCTIVE ALTERNATE #2: ELIMINATE TUNNEL (EAST LEG)
 - DEDUCTIVE ALTERNATE #3: ELIMINATE FAUX WINDOWS AT CLEARSTORY
 - DEDUCTIVE ALTERNATE #4: ELIMINATE WORK AT B8 CORRIDOR
 - DEDUCTIVE ALTERNATE #5: ELIMINATE CONCRETE
 - DEDUCTIVE ALTERNATE #6: ELIMINATE LANDSCAPE
 - DEDUCTIVE ALTERNATE #7: REDUCE PLATFORM AT CHILLER
 - DEDUCTIVE ALTERNATE #8: ELIMINATE MVS SECURITY
 - DEDUCTIVE ALTERNATE #9: ELIMINATE LARGE PORCH
 - DEDUCTIVE ALTERNATE #10: ELIMINATE SMALL PORCH A
 - DEDUCTIVE ALTERNATE #11: ELIMINATE SMALL PORCH B
 - DEDUCTIVE ALTERNATE #12: ELIMINATE ENTRANCE CANOPY
 - DEDUCTIVE ALTERNATE #13: ELIMINATE FENCE/ FAUX ROOFS AT RESIDENT ROOMS
 - DEDUCTIVE ALTERNATE #14: ELIMINATE PATENT LIFTS TRACK EXTENSIONS INTO RESIDENT RESTROOMS
 - DEDUCTIVE ALTERNATE #15: REDUCE THE POROUS ASPHALT / PARKING / PORTION OF DRIVE ENTRANCE
 - DEDUCTIVE ALTERNATE #16: ELIMINATE EXTERIOR SIGNAGE

INTERIOR FINISH SYMBOLS

| | |
|--|---|
| | MATERIAL FLOOR CHANGE (REFER TO IN501 FOR TRANSITION DETAILS) |
| | PATTERN CHANGE (REFER TO IN501 FOR TRANSITION DETAILS) |
| | DIRECTION OF FINISH |
| | CORNER GUARD LOCATION |
| | PAINT COLOR / WALL FINISHES |
| | WALL BASE / FLOOR FINISH TAG |
| | MILLWORK LOCK LOCATION |
| | WALL BASE / WALL FINISH TAG |

FINISH ABBREVIATIONS

| ABBREVIATION | FINISH TYPE |
|--------------|-------------------------|
| AT | ACOUSTICAL CEILING TILE |
| AWP | ACOUSTICAL WALL PANEL |
| C | CONCRETE |
| CC | CUBICLE CURTAIN TRACK |
| CG | CORNER GUARD |
| CHR | CHAIR RAIL |
| CW | CATWALK |
| HR | HAND RAIL |
| LVT | LUXURY VINYL TILE |
| MB | MEMORY BOX |
| P | PAINT |
| PL | PLASTIC LAMINATE |
| PT | PORCELAIN TILE |
| RB | RESILIENT BASE |
| RWC | RIGID WALL COVERING |
| RWS | ROLLER SHADES |
| S | SOLID SURFACE |
| SD | SIDING |
| ST | STACKED STONE |
| TR | TRIM |
| YWC | VINYL WALLCOVERING |
| WD | PLYWOOD |
| WFT | WALL FINISH TYPE |

Revisions:

Date:

CONSULTANT

NORRIS DESIGN

Landscape Architect
416 North Toole Avenue
Tucson, AZ 85710
(520) 622-9565
Josh Orth, PLA

HINMAN

Protective Design Specialist
240 West 35th St. Suite 1004
New York, NY 10001
(212) 967-4890
Corrine Tan, SE

C.S. Davidson, Inc.

Structural
515 West James Street, Suite 102
Lancaster, PA 17603
(717) 481-2991
Jason Vannoy, SE, PE

MES GROUP

MEP
550 North Reno Street, Suite 203
Tampa, FL 33609
(813) 289-4700
Nicholas Stephenson, PE

ARCHITECT/ENGINEER OF RECORD

A/E:
TRIPLE C - The A/E Group
201 E. Jefferson Street, Suite 200
Syracuse, NY 13202
(315) 484-5958
Mat Perkins

TRIPLE C - THE A&E GROUP

A MULTI-DISCIPLINARY COMPANY

STAMP

STATE OF MARYLAND

PROFESSIONAL ARCHITECT

19706

Office of Construction and Facilities Management

VA U.S. Department of Veterans Affairs

Drawing Title

ARCHITECTURAL ENLARGED VIEWS

Approved:

Phase

ISSUED FOR CONSTRUCTION

FULLY SPRINKLERED

Project Title

NEW COMMUNITY LIVING CENTER

Location

2094 Albany Post Road, Montrose, NY 10548

Issue Date

05/09/2022

Checked

H.GARDINER

Drawn

K. MACAULAY

Project Number

620-334

Building Number

CLC

Drawing Number

A-405