

A

B

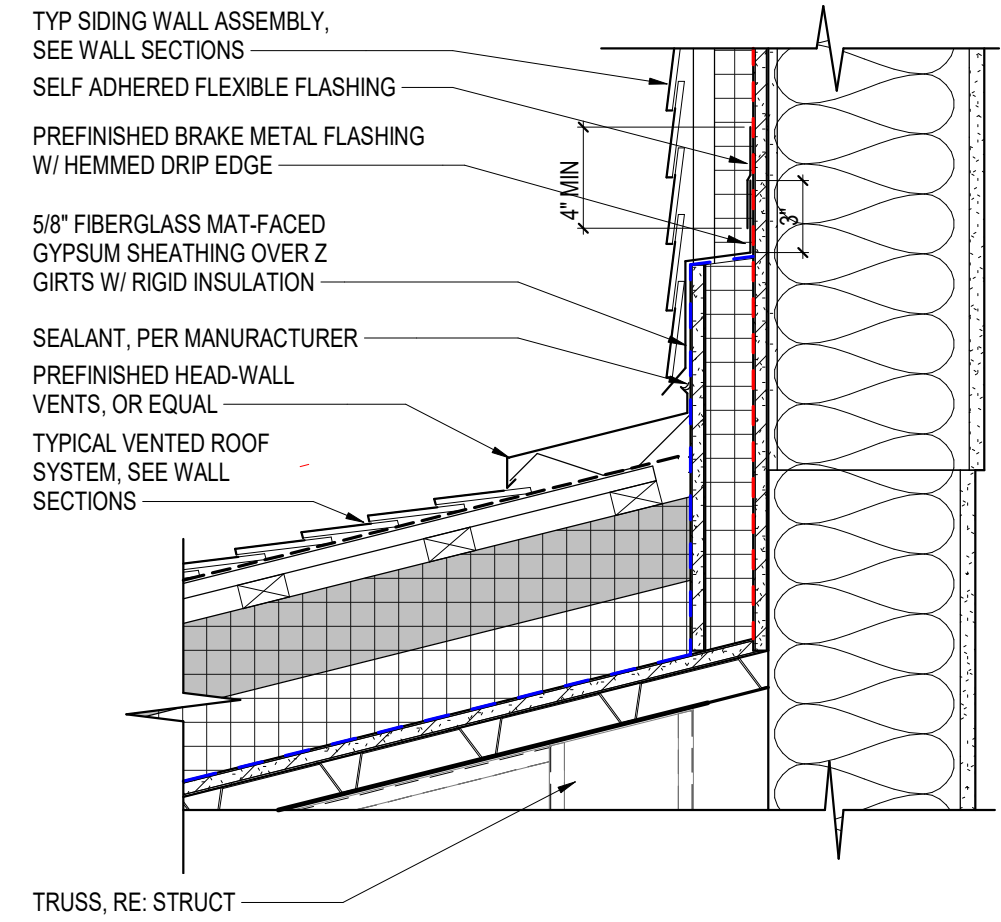
C

D

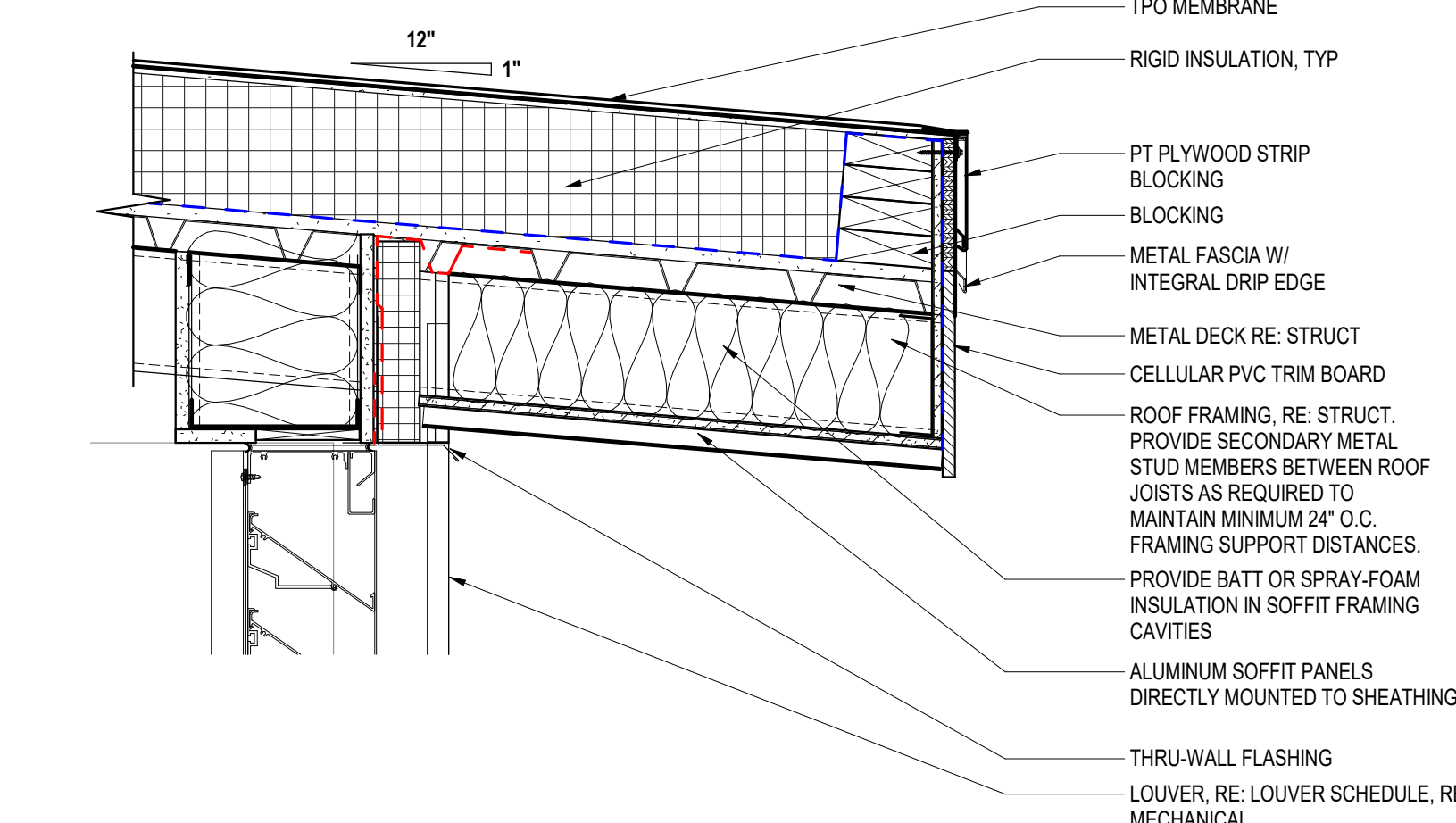
E

F

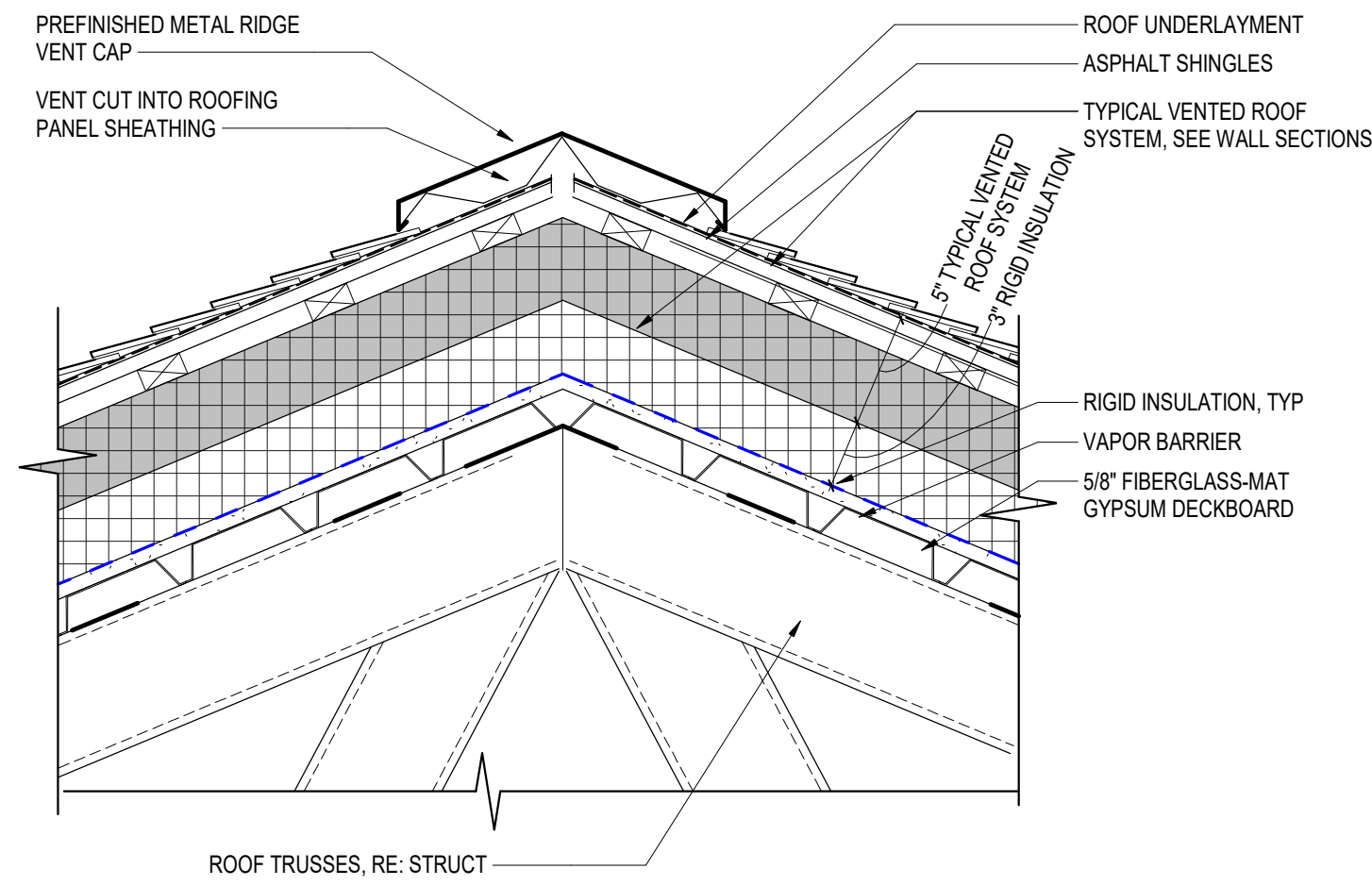
VENTED ROOF SYSTEM NOTE
STANDARD VENTED ROOF CONSTRUCTION IS ASPHALTIC SHINGLE ROOFING OVER ROOF UNDERLAYMENT. FULL ICE AND WATER SHIELD AS BASE BD. #15 FELT LAYER TYPICAL WITH ICE AND WATER SHIELD @ RIDGES AND EAVES AS DEDUCTIVE ALTERNATE. SEE ROOF PLAN FOR SPECIFIC AREAS. OVER 3/4" VENTED NAILABLE INSULATED ROOFING PANELS OVER 3" RIGID INSULATION, OVER VAPOR BARRIER, OVER 5/8" FIBERGLASS-MAT GYPSUM DECK BOARD, OVER 1 1/2" METAL DECKING MOUNTED DIRECTLY TO ROOF TRUSSES. RE: STRUCT FOR ROOF TRUSSES. BOTTOM ASSEMBLY ABOVE INHABITED INTERIOR AREAS IS FRAMING AND GWS. SEE UL F203 DETAIL ON A-723



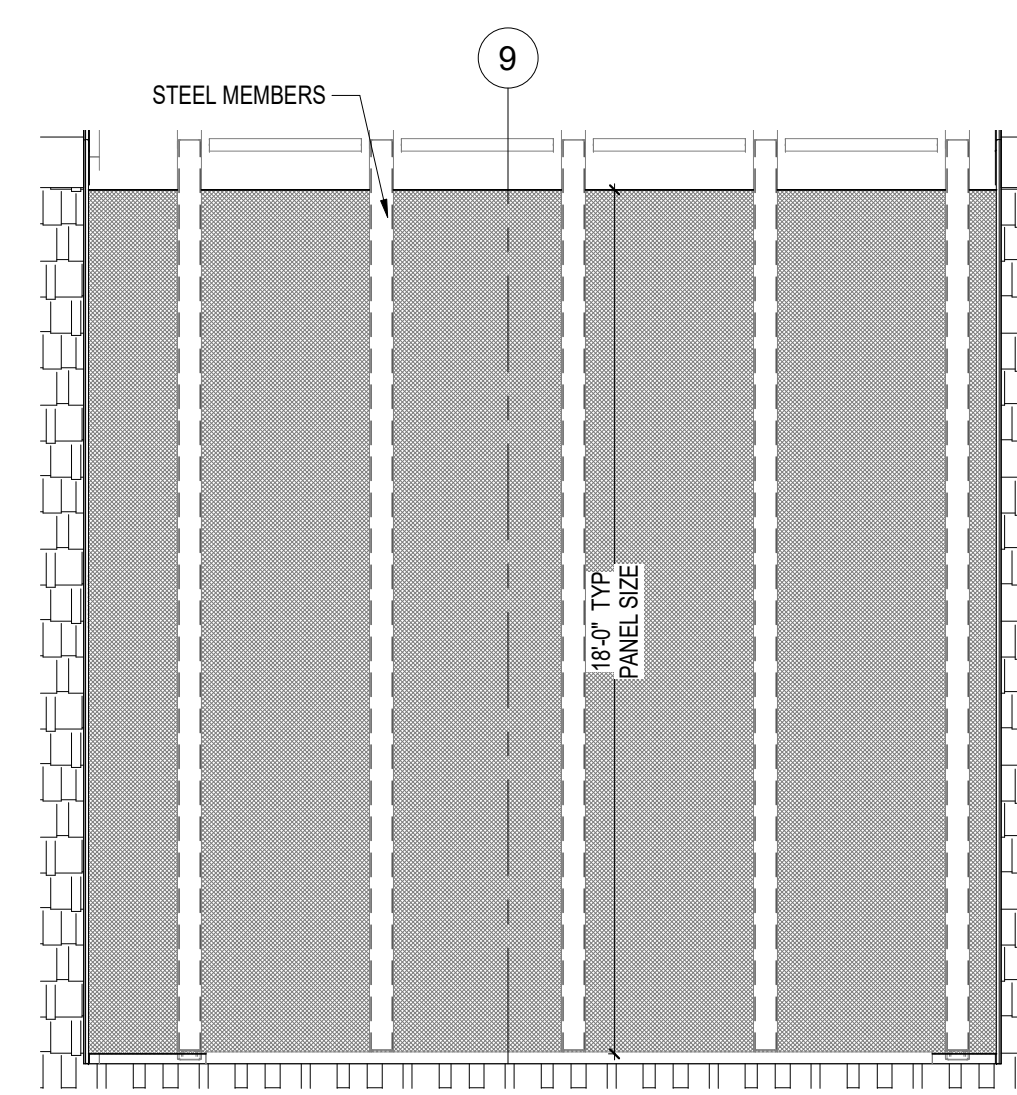
B1 ROOF AT HIGH WALL
1 1/2" = 1'-0"



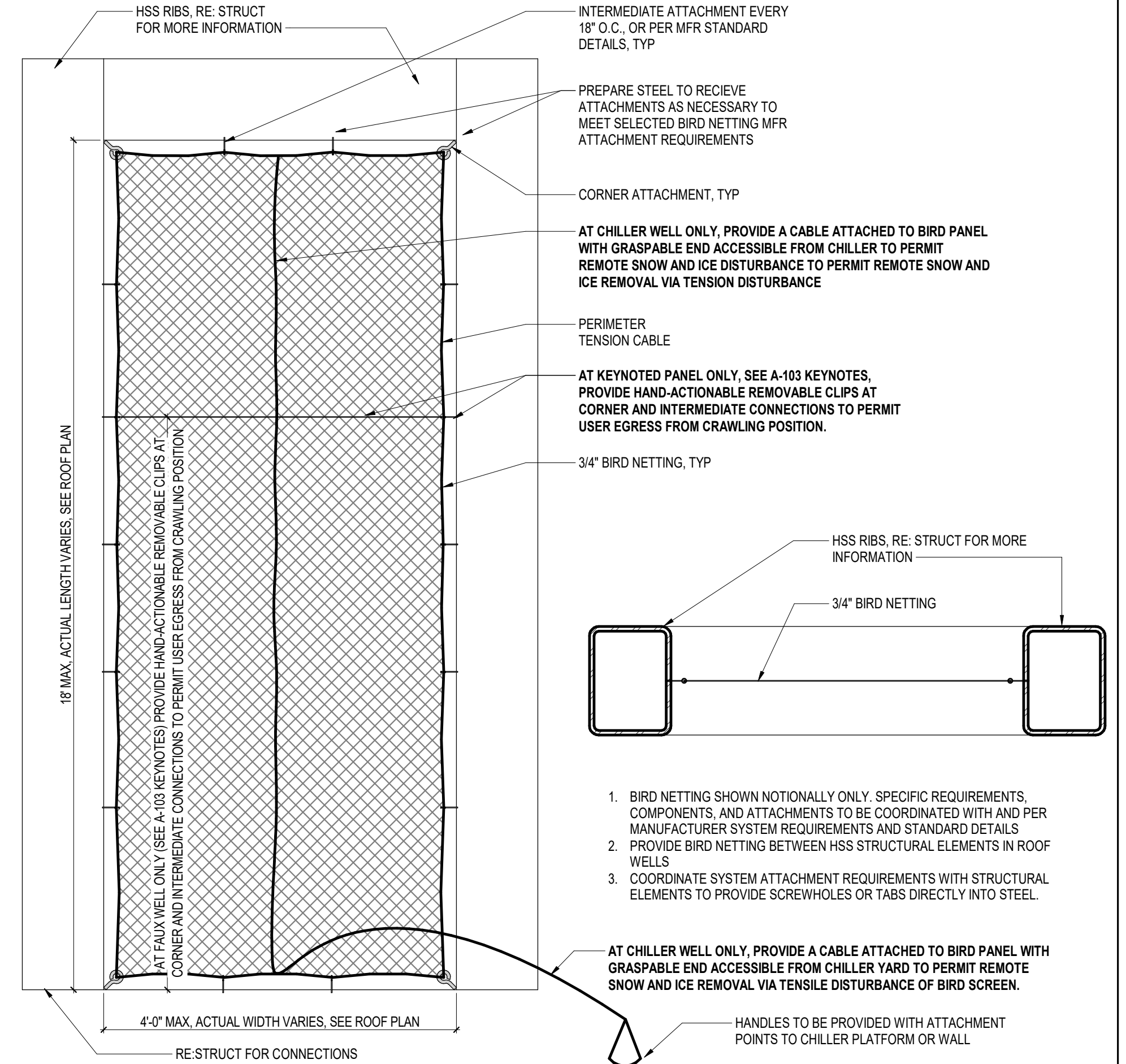
B3 DETAIL @ TPO DRIP EDGE
1 1/2" = 1'-0"



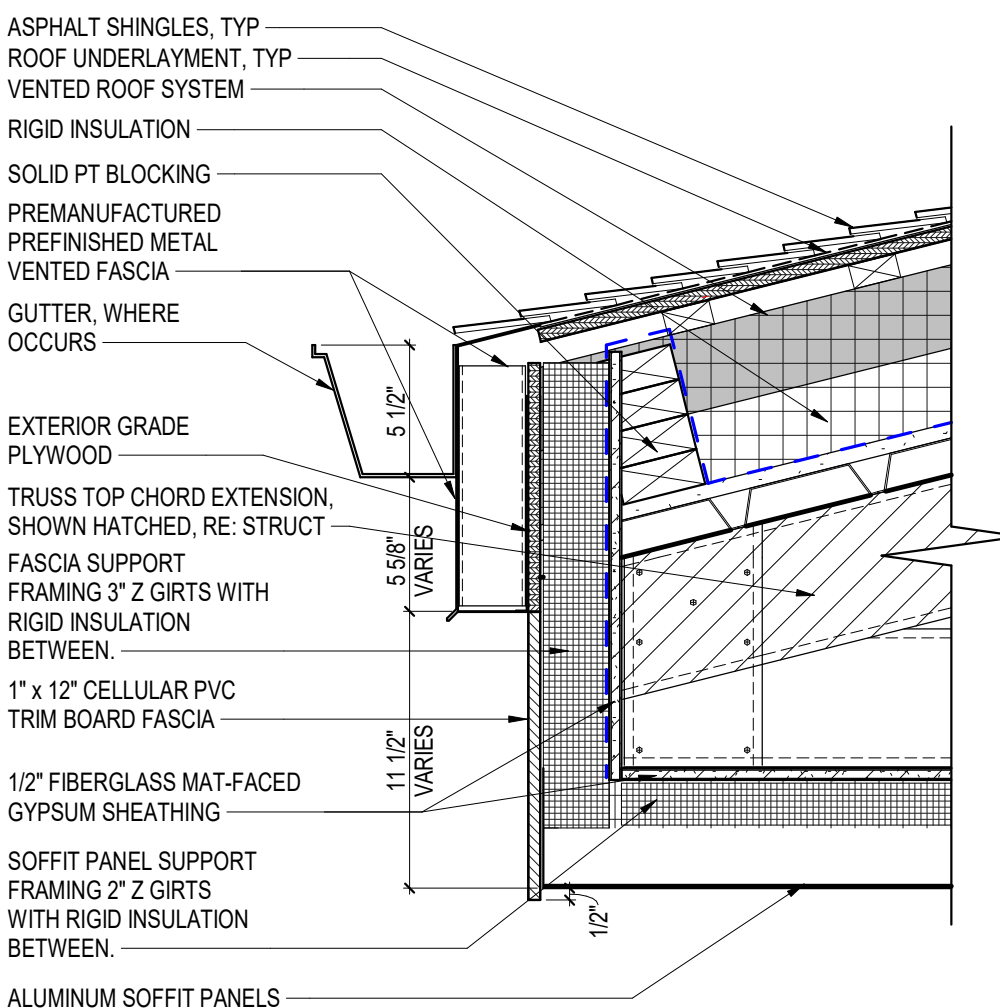
C4 DETAIL @ RIDGE VENT
1 1/2" = 1'-0"



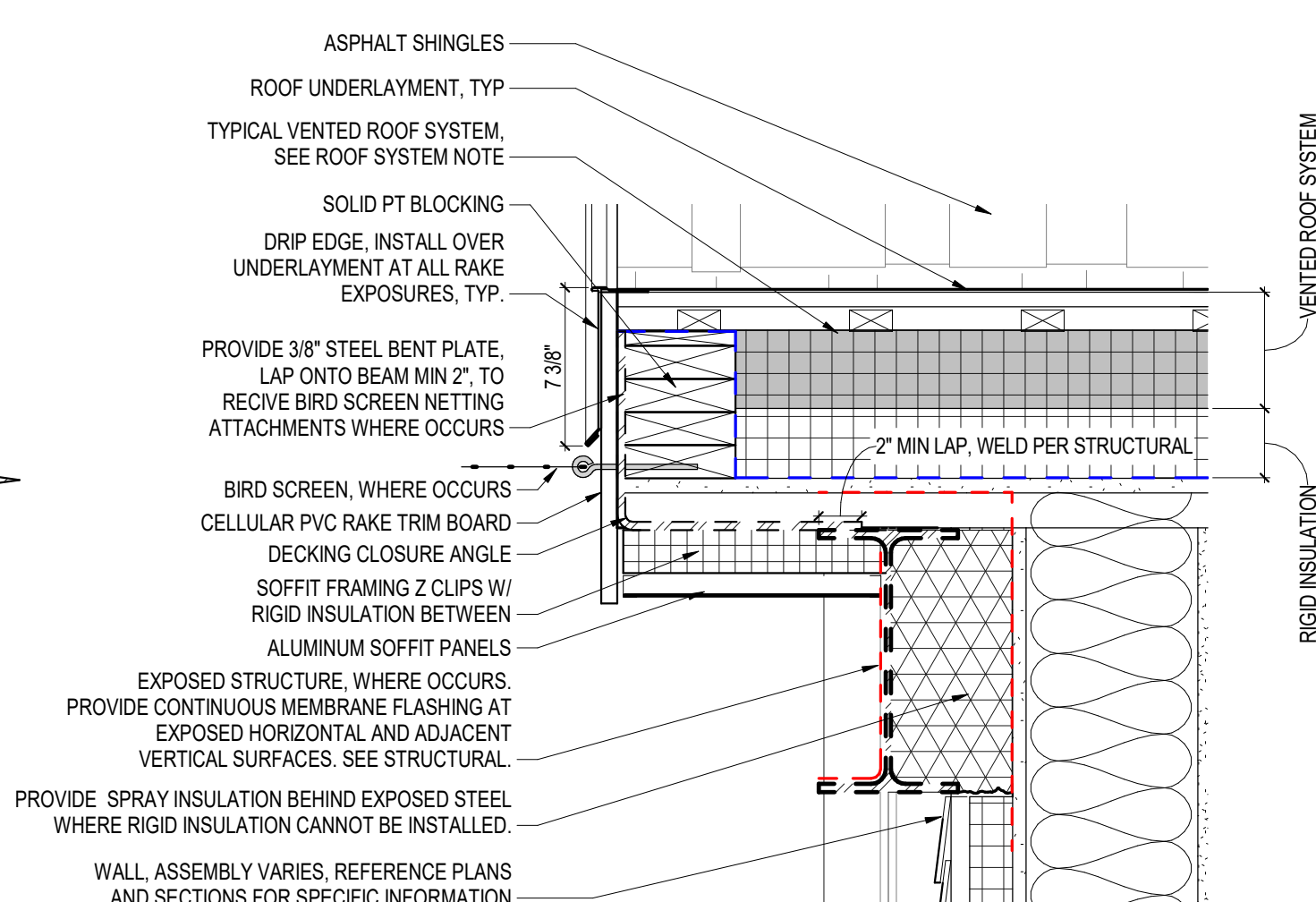
C7 ELEVATION DETAIL @ BIRD NETTING
1/4" = 1'-0"



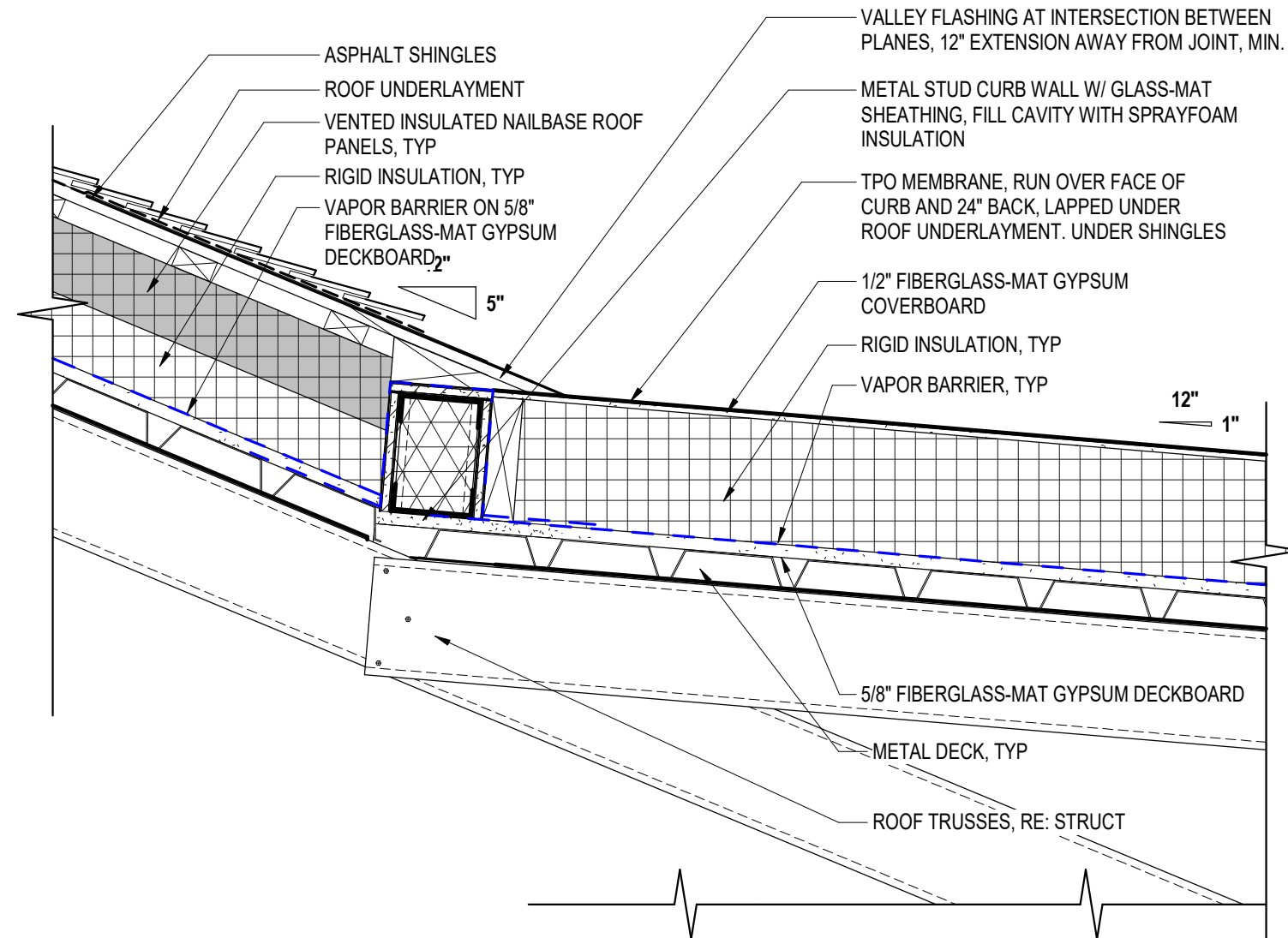
C8 DETAIL @ BIRD NETTING
1 1/2" = 1'-0"



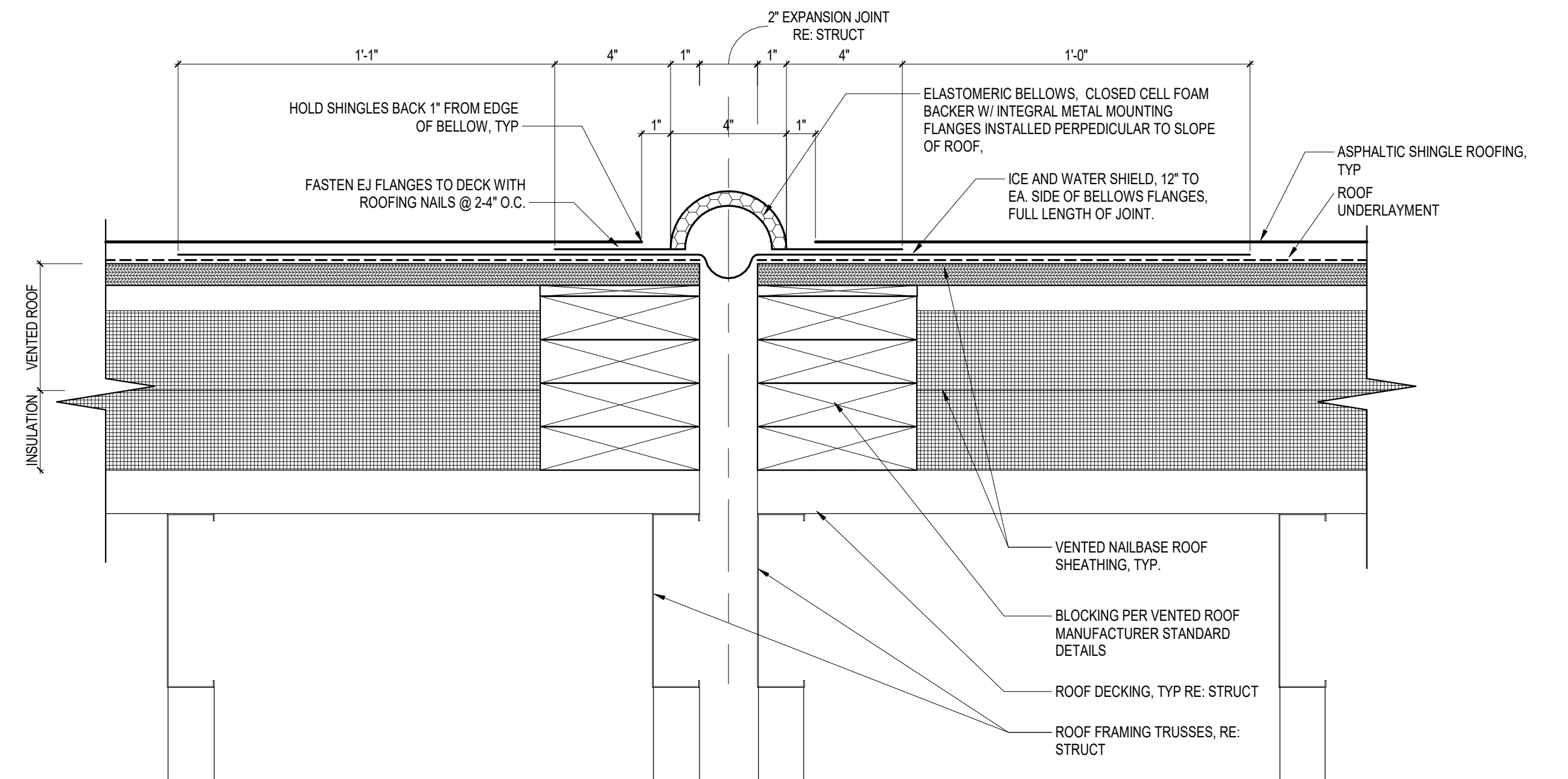
D1 TYPICAL ROOF AND GUTTER AT LOWER EAVE
1 1/2" = 1'-0"



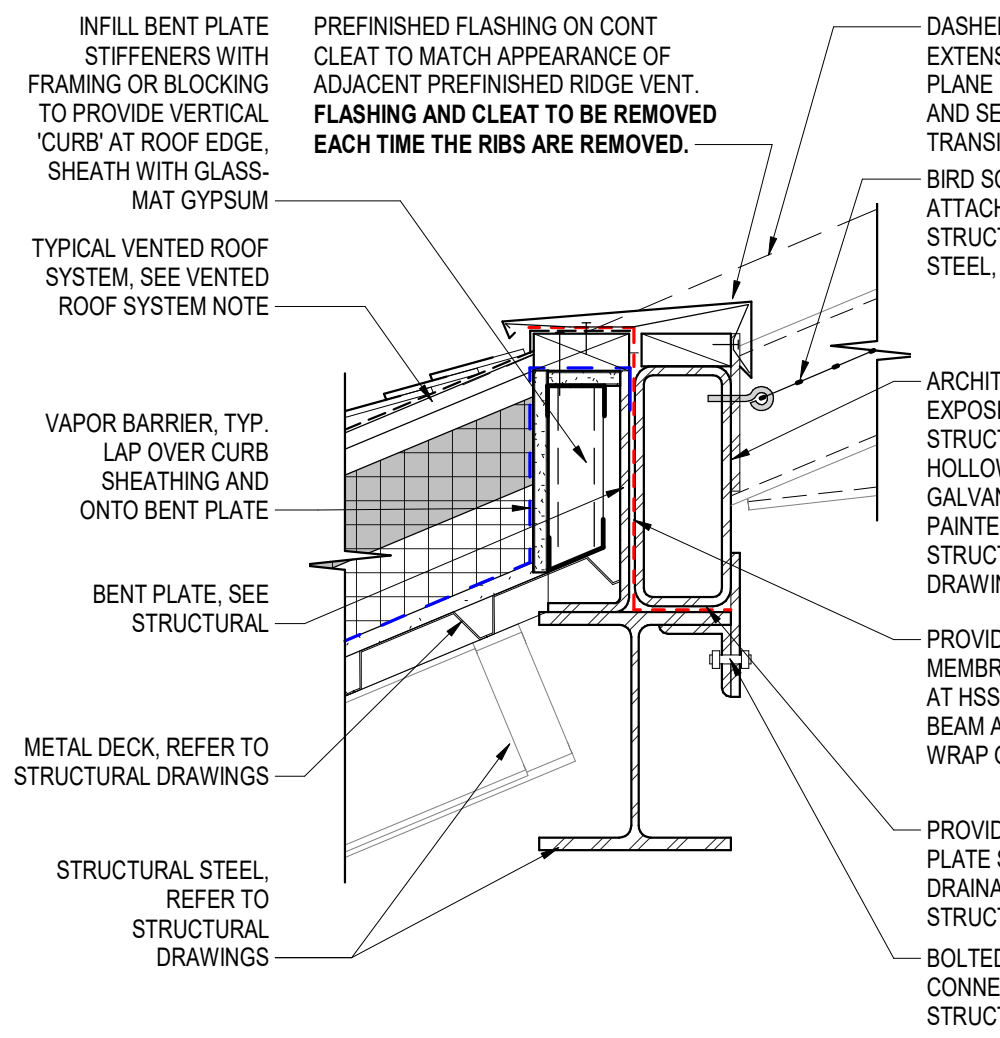
D3 DETAIL AT RAKE, TYP.
1 1/2" = 1'-0"



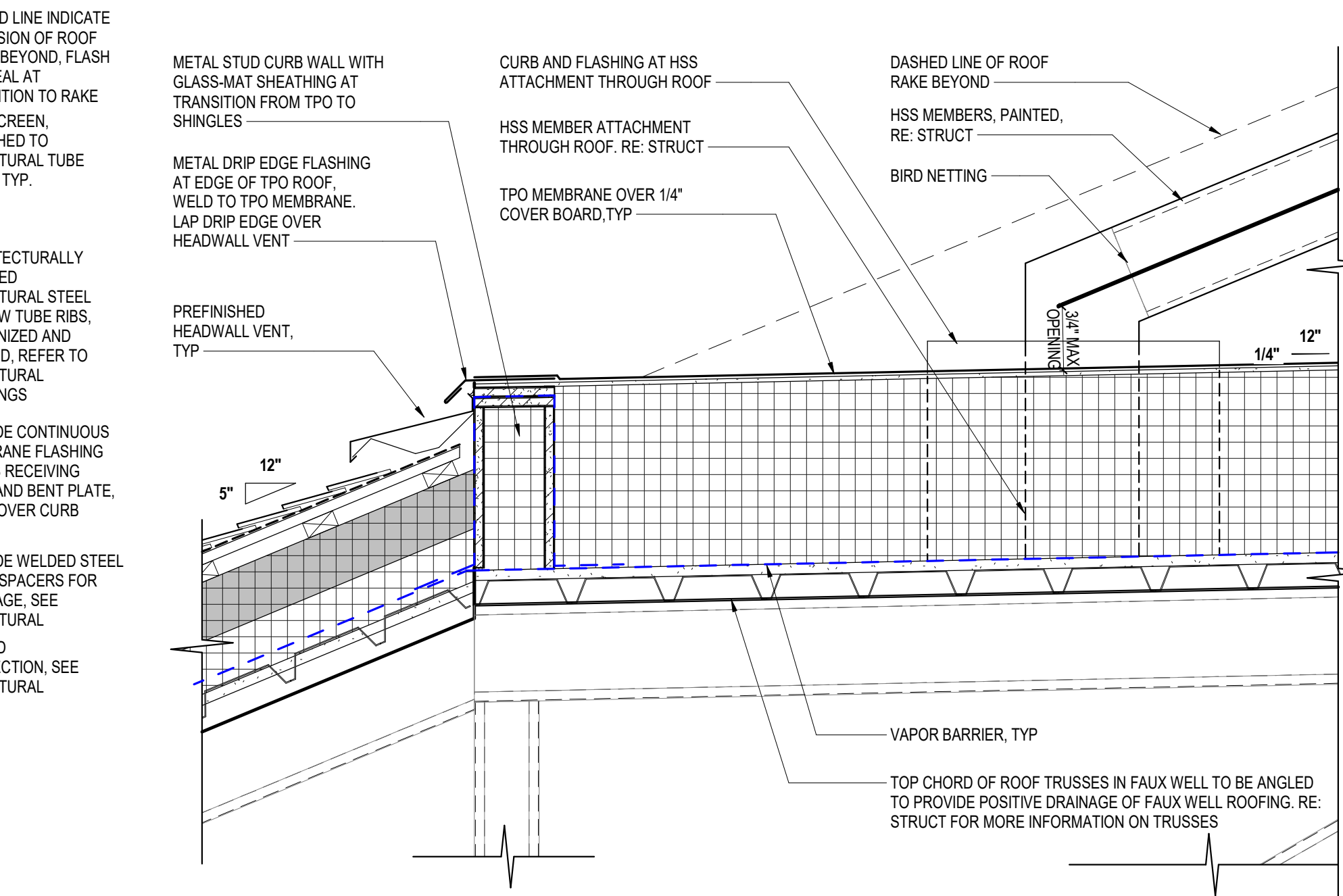
D5 DETAIL @ SHINGLE TO TPO
1 1/2" = 1'-0"



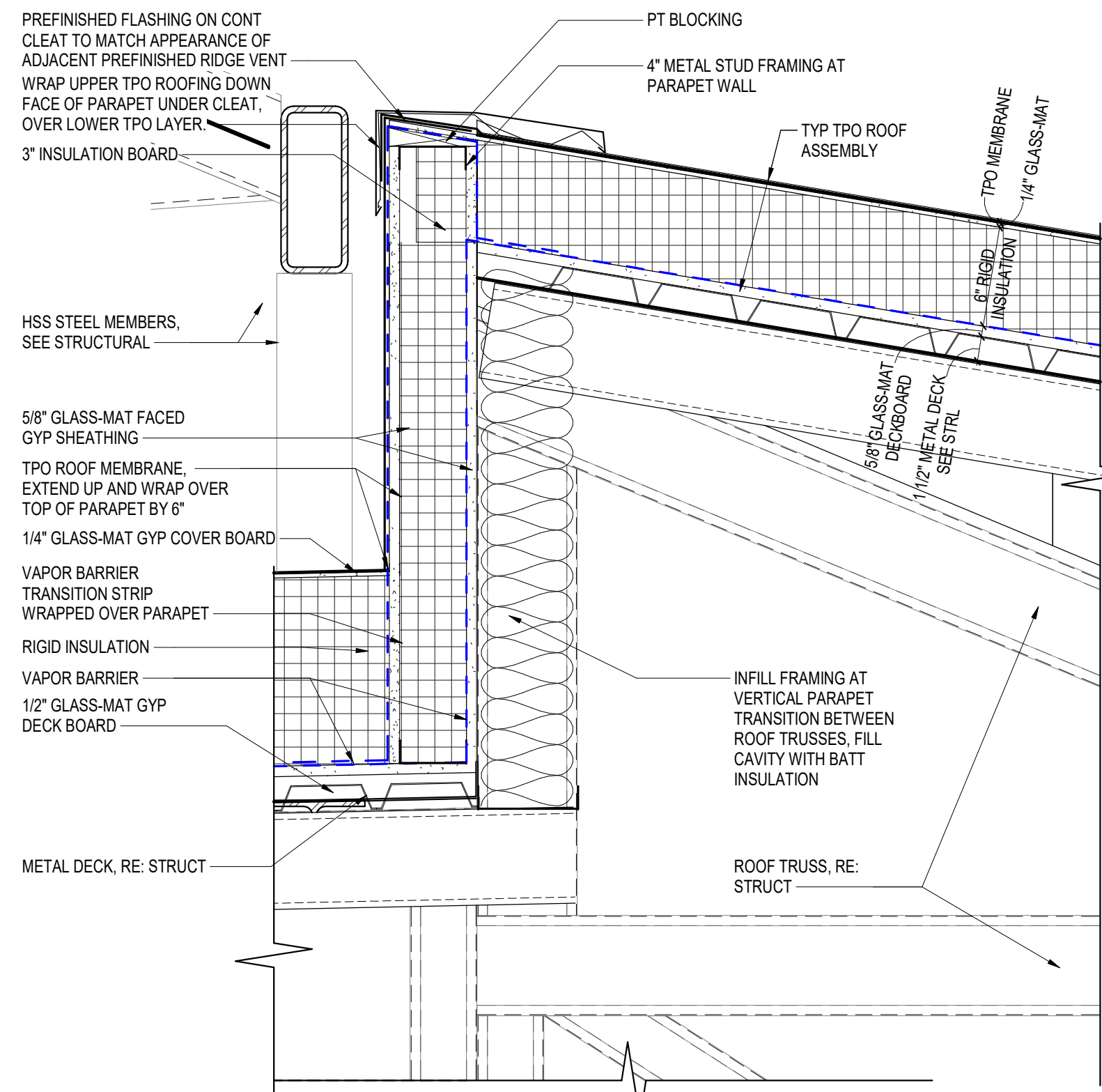
D7 DETAIL @ SHINGLE ROOF EXPANSION JOINT, TYP
3" = 1'-0"



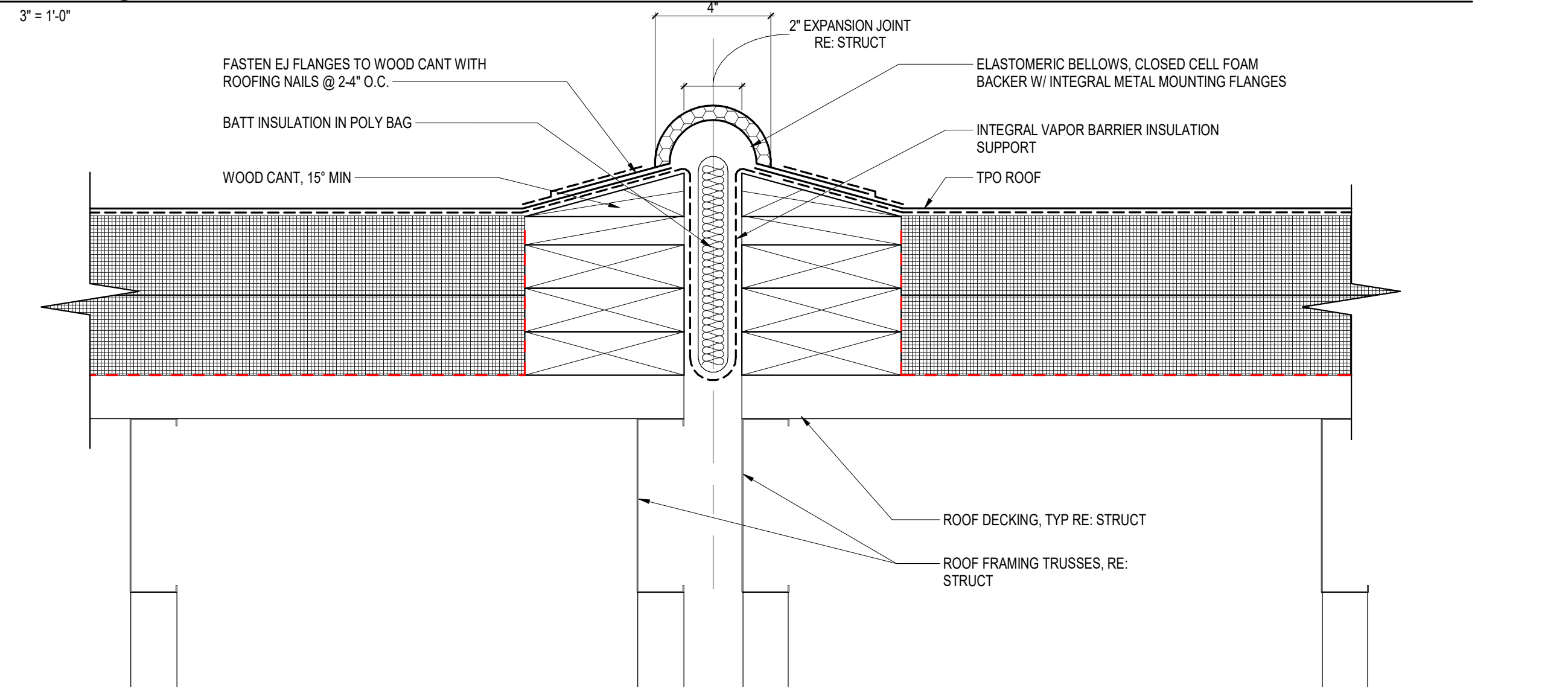
F1 DETAIL @ MECHANICAL WELL
1 1/2" = 1'-0"



F3 DETAIL @ FAUX WELL TPO TO SHINGLE
1 1/2" = 1'-0"



F5 DETAIL @ FAUX WELL TPO TO TPO
1 1/2" = 1'-0"



F7 DETAIL @ TPO ROOF EXPANSION JOINT
3" = 1'-0"

7/21/2021 3:52:50 PM
B:\60-1620-334 New Community Living Center\620-334 CLC-Arch.rvt
VA FORM 08-6231

CONSULTANT

NORRIS DESIGN
Landscape Architect
416 North Toole Avenue
Tucson, AZ 85711
(520) 622-9565
Josh Orth, PLA

HINMAN
Protective Design Specialist
240 West 35th St. Suite 1004
New York, NY 10001
(212) 967-4890
Corinne Tan, SE

C.S. Davidson, Inc.
Structural
515 West James Street, Suite 102
Lancaster, PA 17603
(717) 481-2991
Jason Vannoy, SE, PE

MES GROUP
MEP
550 North Reno Street, Suite 203
Tampa, FL 33609
(813) 289-4700
Nicholas Stephenson, PE

ARCHITECT/ENGINEER OF RECORD

A/E:
TRIPLE C - The A/E Group
201 E. Jefferson Street, Suite 200
Syracuse, NY 13202
(315) 484-9958
Mat Perkins

TRIPLE C - THE A&E GROUP
A MULTI-DISCIPLINARY COMPANY

STAMP
STATE OF MARYLAND
JAMES R. PERKINS
19706
ARCHITECT

Office of Construction and Facilities Management

VA U.S. Department of Veterans Affairs

Drawing Title
EXTERIOR DETAILS

Approved:

Phase
ISSUED FOR CONSTRUCTION

FULLY SPRINKLERED

Project Title
NEW COMMUNITY LIVING CENTER

Location
2094 Albany Post Road, Montrose, NY 10548

Issue Date
05/09/2022

Checked
M. PERKINS

Drawn
K. BICKEL

Project Number
620-334

Building Number
CLC

Drawing Number
A-502