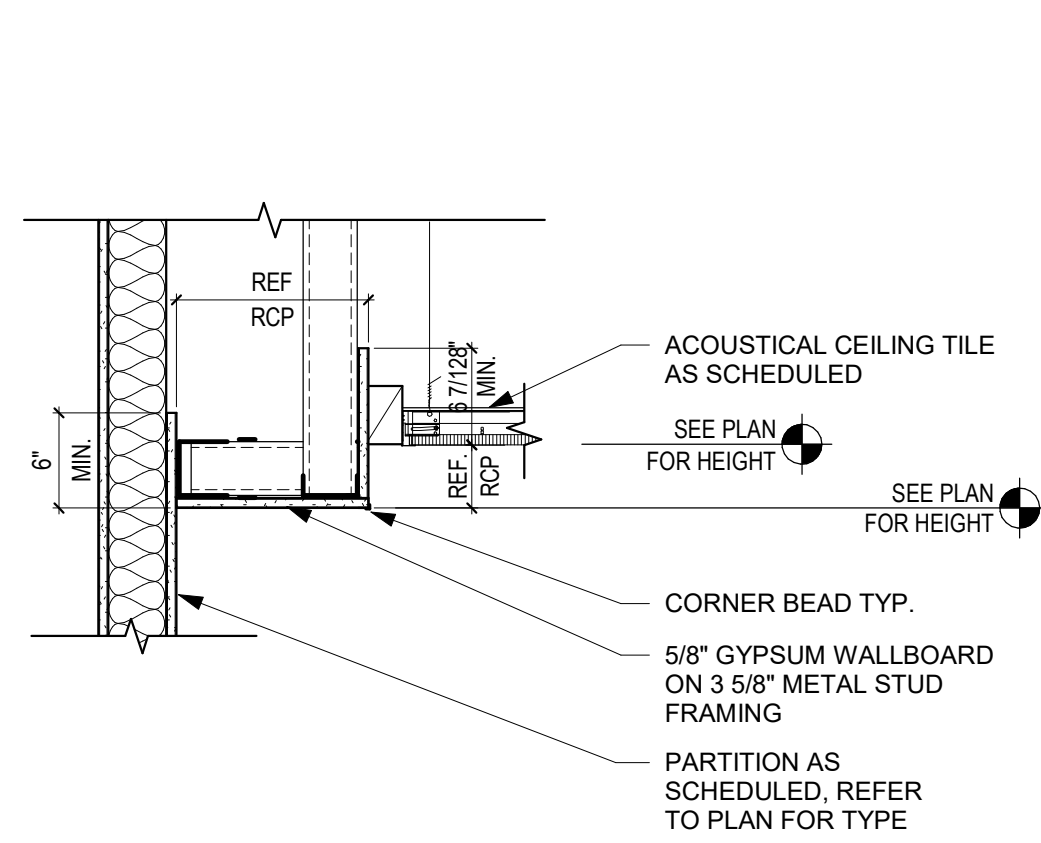
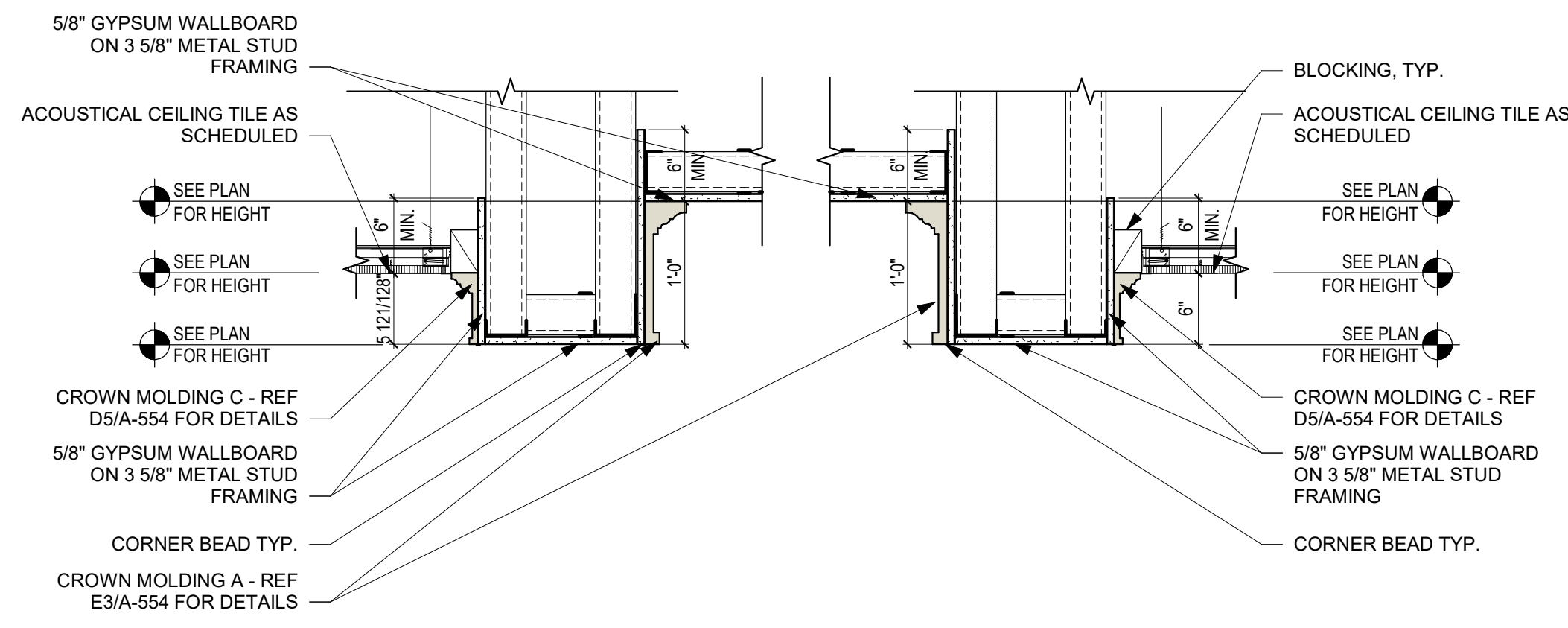


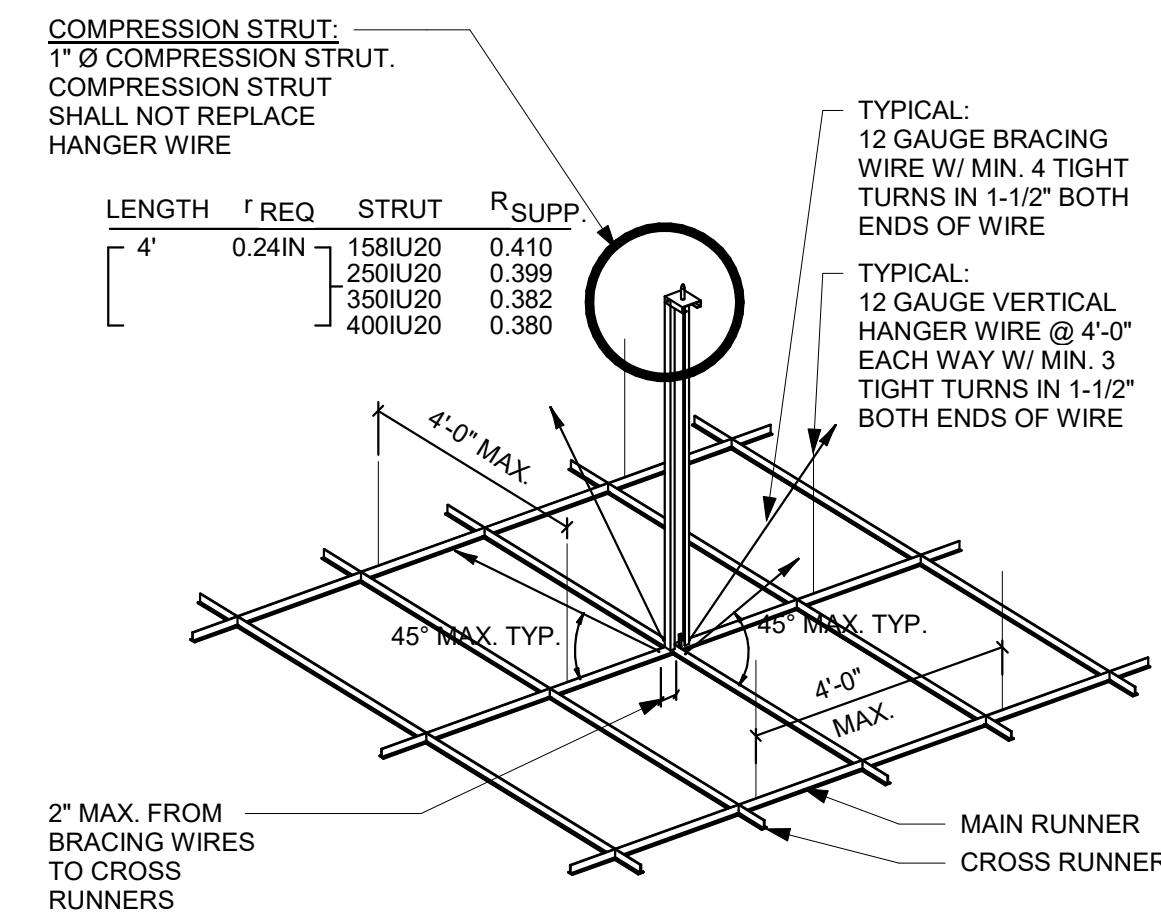
A



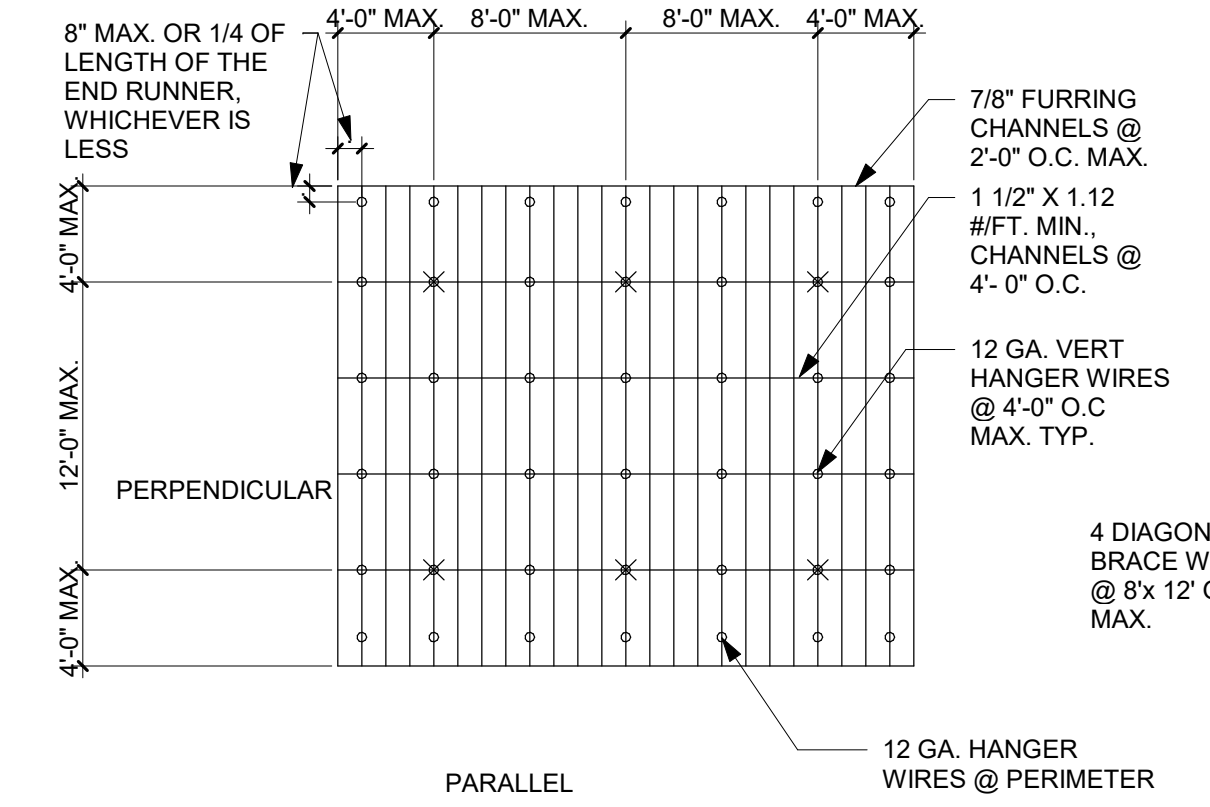
B1 SOFFIT @ WALL  
1" = 1'-0"



B3 SOFFIT @ ACTIVITY  
1" = 1'-0"

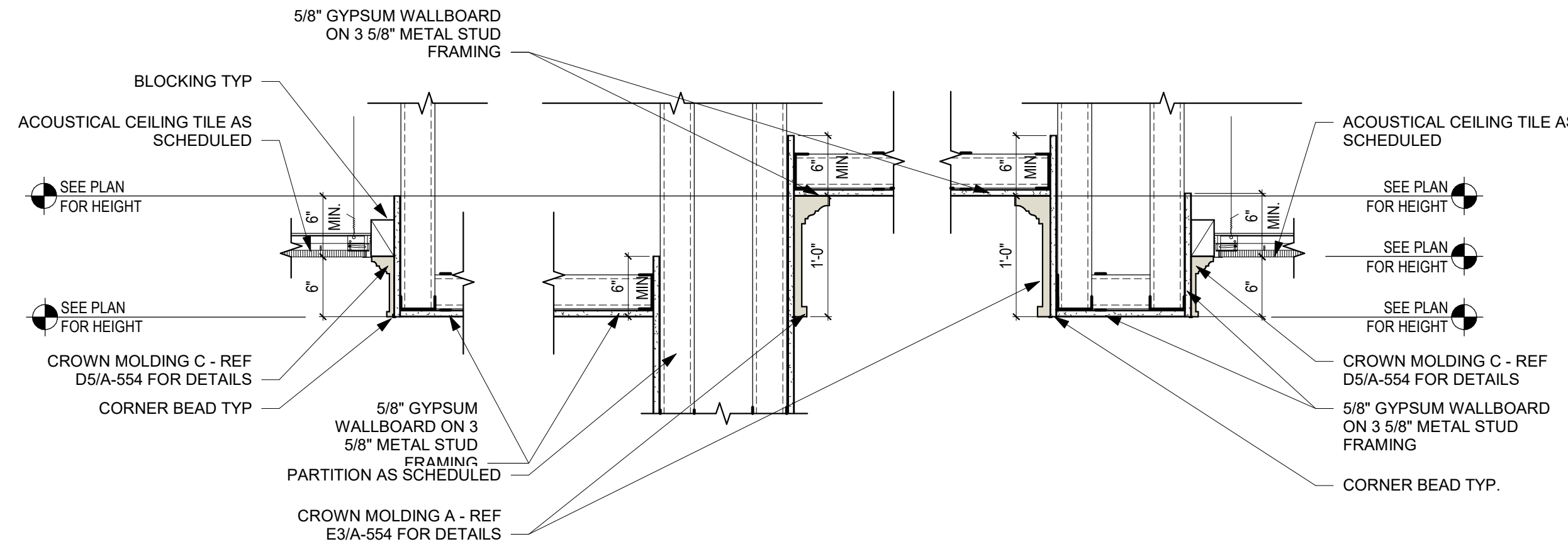


B7 TYP. ACOUSTICAL CEILING BRACING  
3/4" = 1'-0"

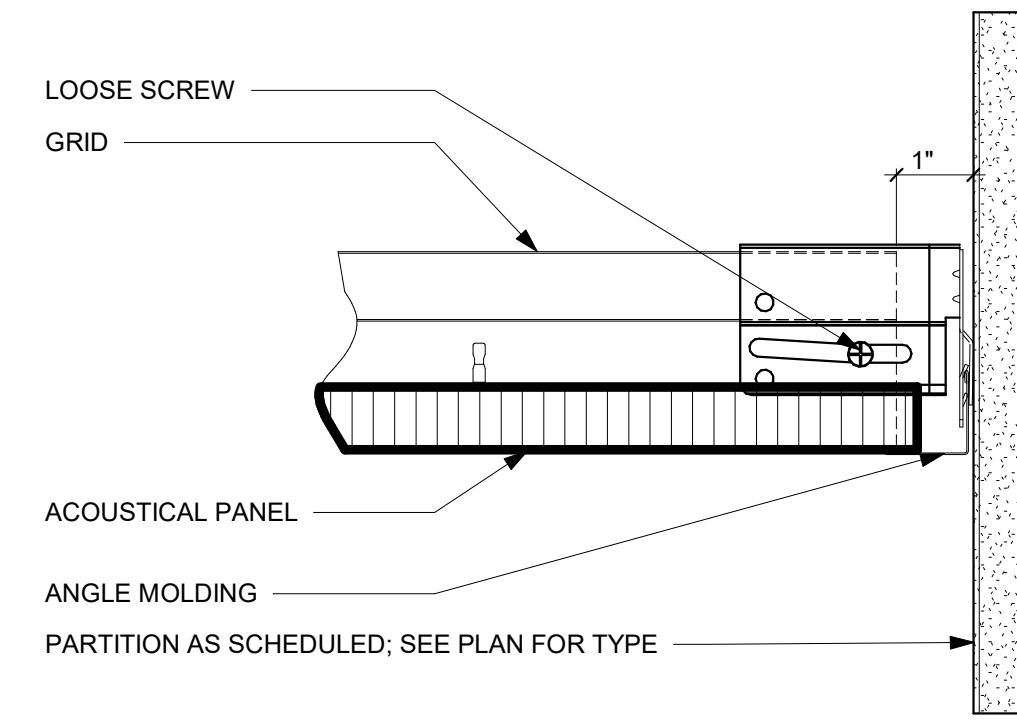


B9 DIAGRAMATIC PLAN-GYP. BD. SUSPENSION SYSTEM  
1/8" = 1'-0"

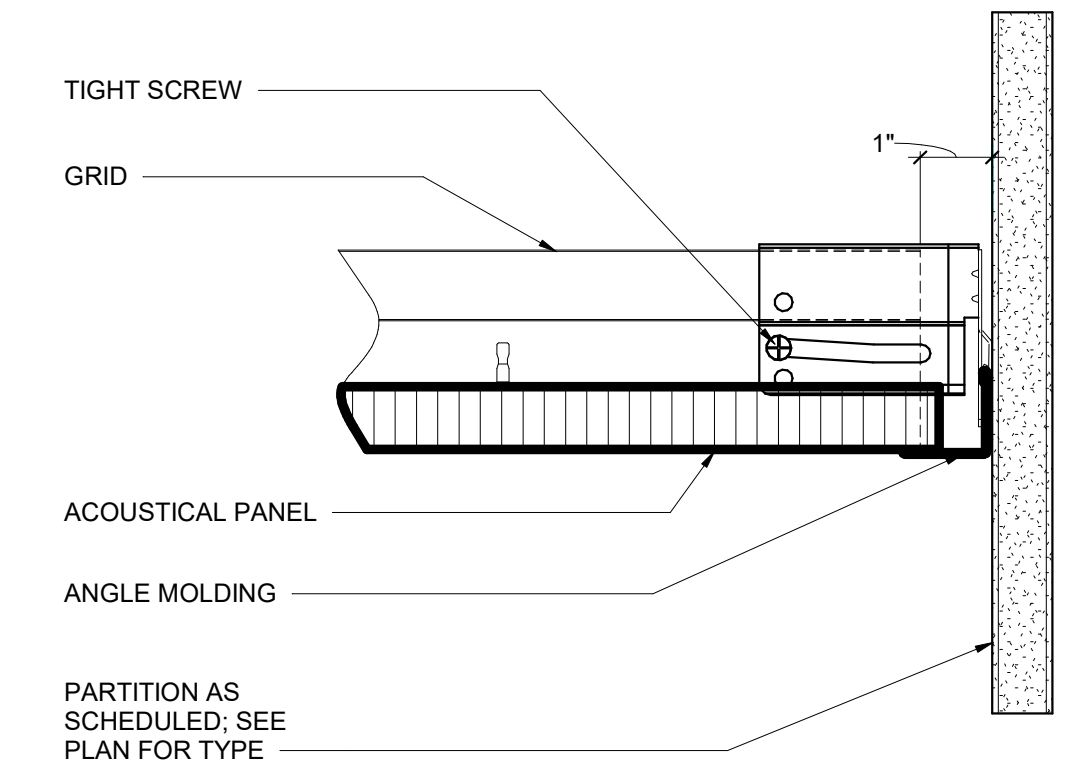
B



C3 SOFFIT @ CHECK-IN  
1" = 1'-0"



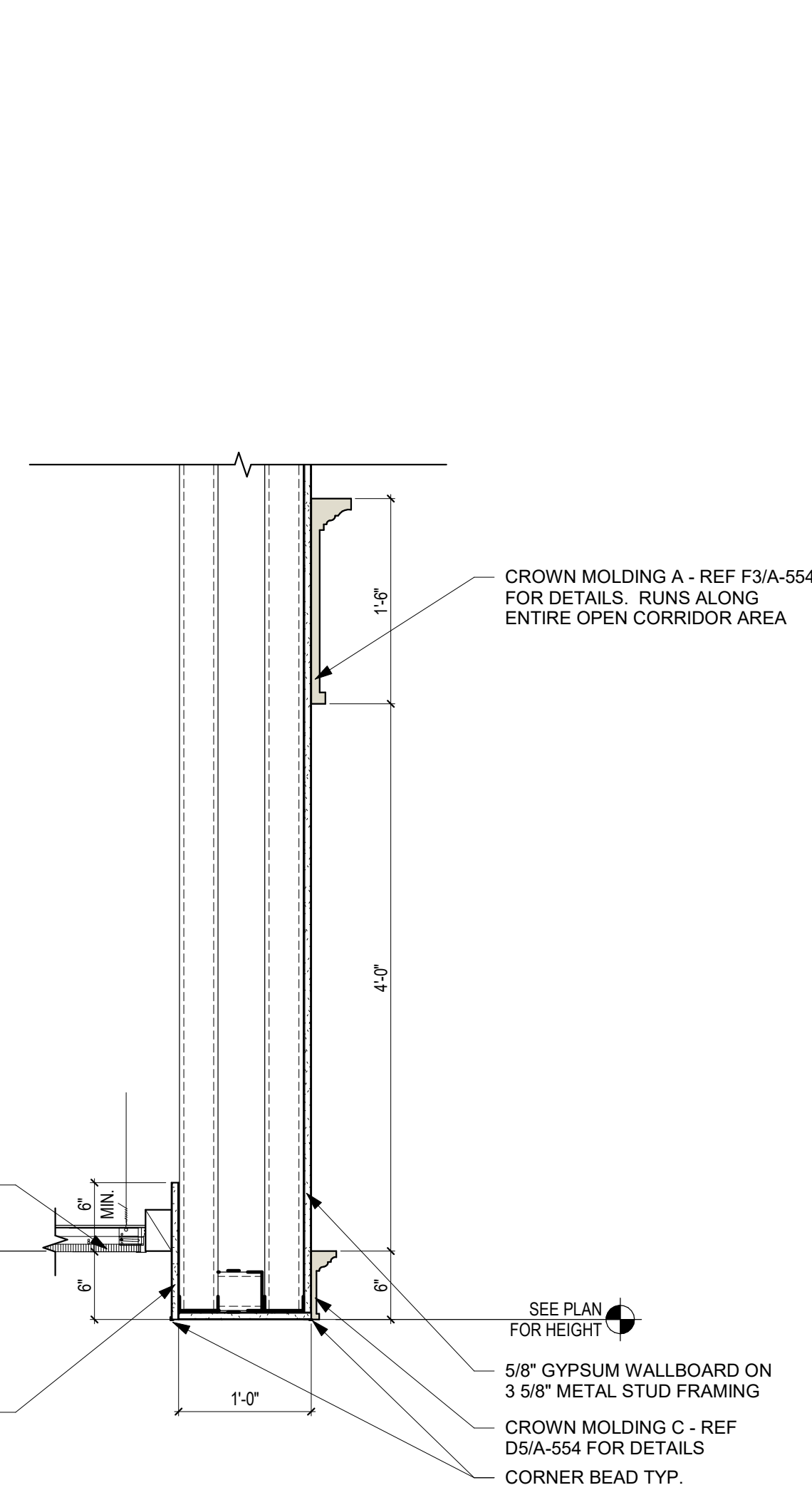
C7 SLIP CONNECTION AT CEILING PERIMETER  
6" = 1'-0"



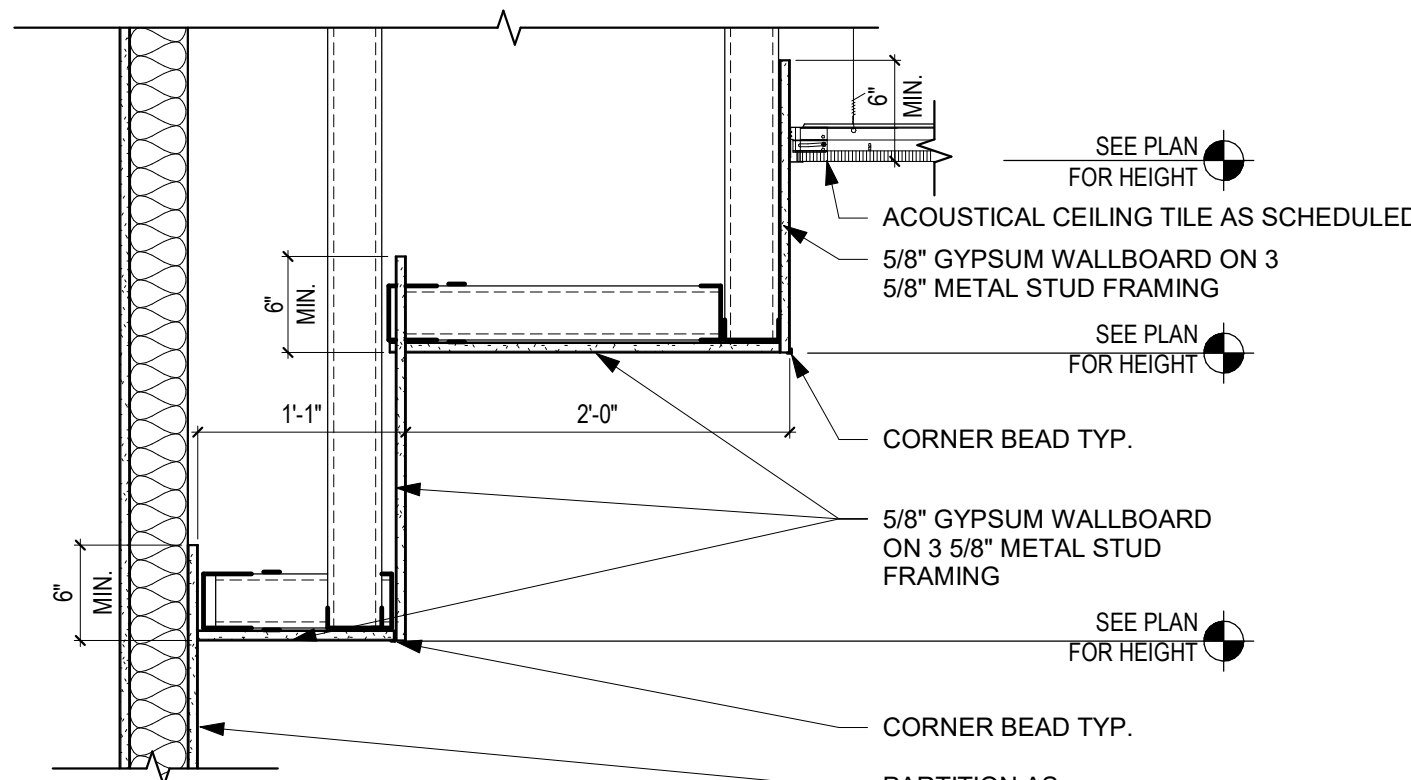
C9 SUSPENDED ACOUSTICAL CEILING  
HORIZONTAL CEILING STRUT- FIXED END  
6" = 1'-0"

C

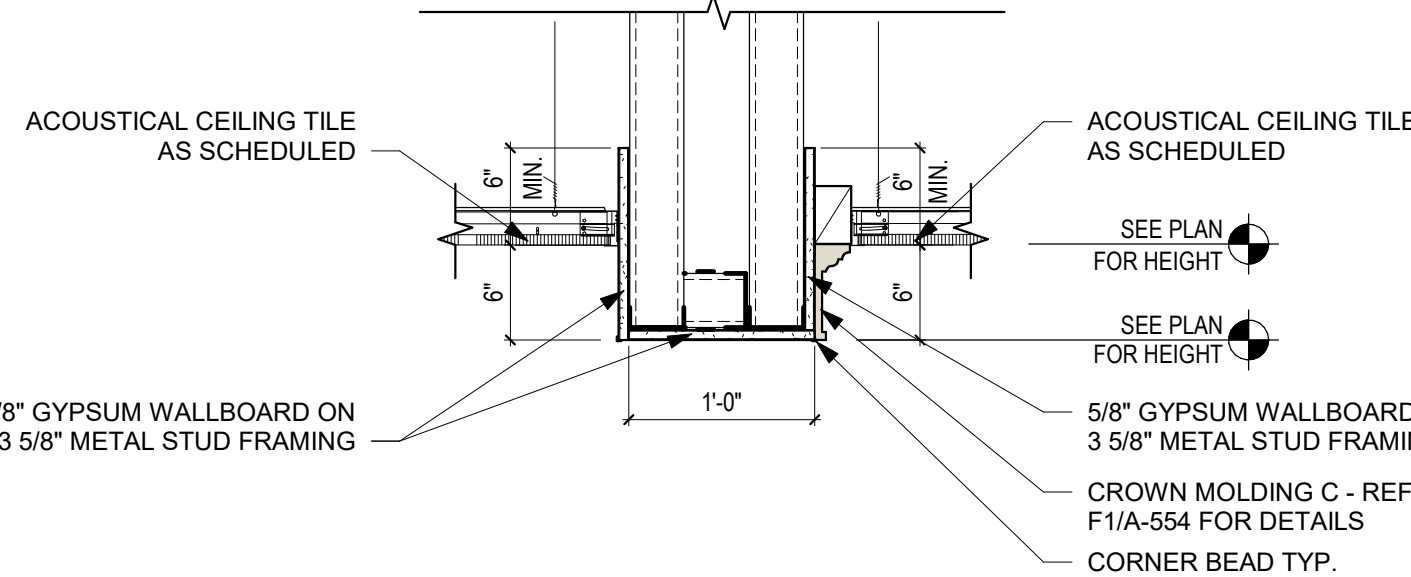
D



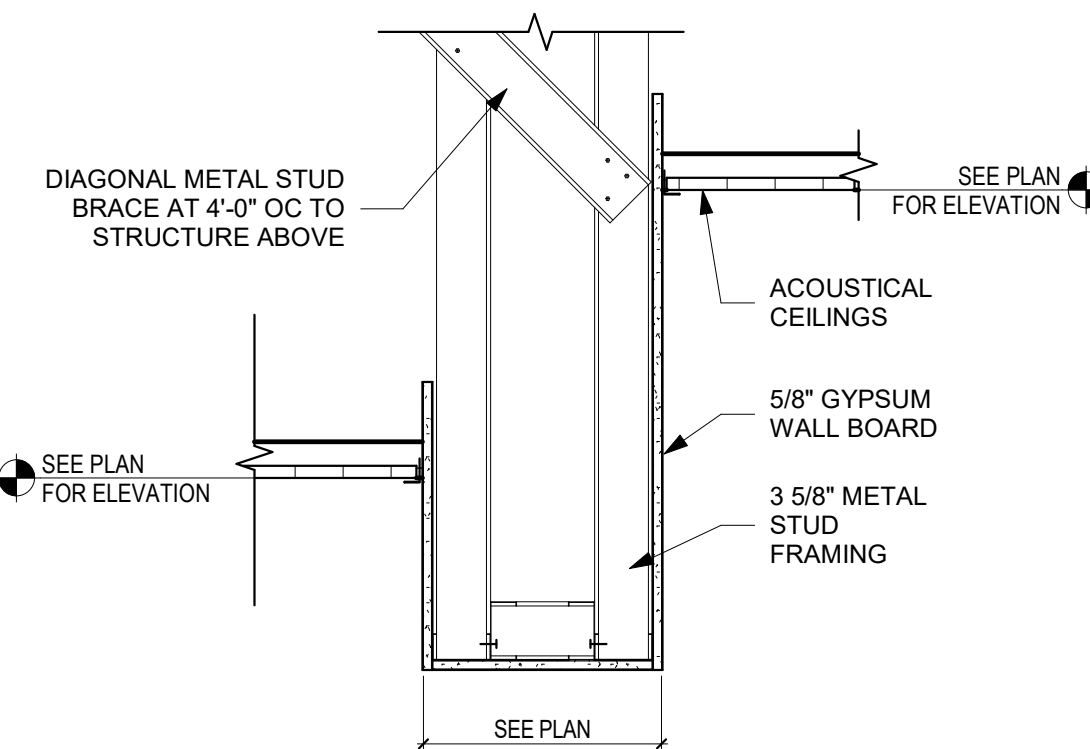
F2 SOFFIT @ OPEN CORRIDOR  
1" = 1'-0"



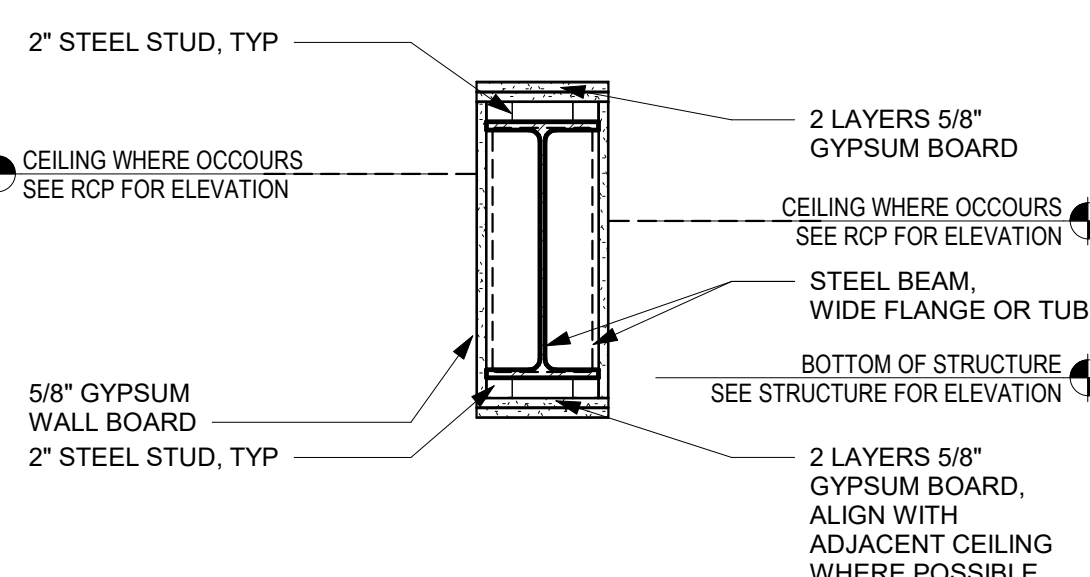
E5 SOFFIT @ KITCHEN WALL  
1" = 1'-0"



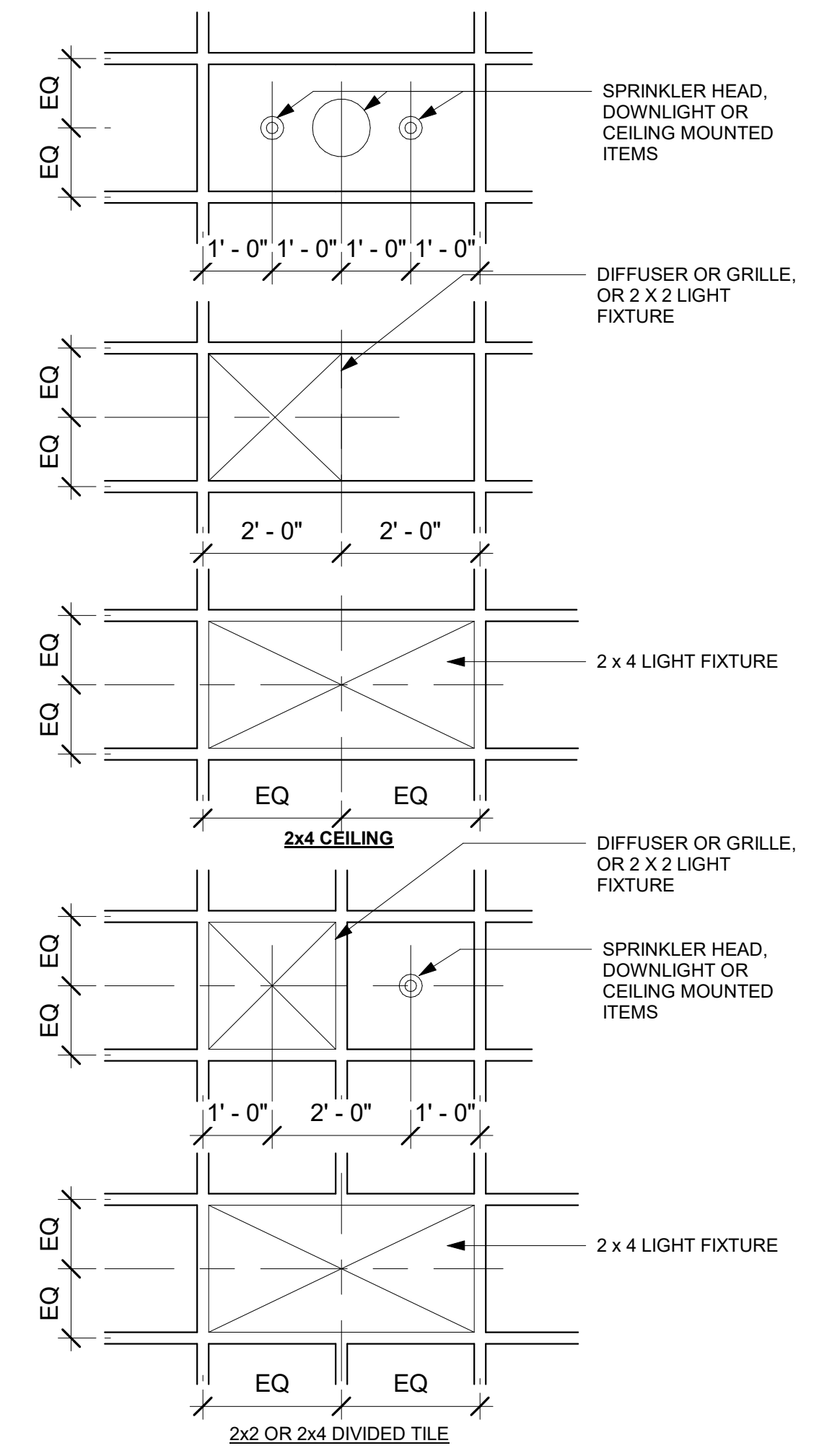
F5 SOFFIT @ AT CORRIDOR  
1" = 1'-0"



E7 SOFFIT @ ACOUSTICAL CEILING TILE  
1" = 1'-0"



F7 GYP BD WRAP @ STRUCTURE  
1" = 1'-0"



F9 TYP. CEILING TILE LAYOUTS  
1/2" = 1'-0"

F

Revisions:	Date:

CONSULTANT		
<b>NORRIS DESIGN</b> Landscape Architect 416 North Toole Avenue Tucson, AZ 85701 (520) 622-6665 Josh Orth, PLA	<b>HINMAN</b> Protective Design Specialist 240 West 35th St, Suite 1004 New York, NY 10001 (212) 967-4890 Corrine Tan, SE	<b>C.S. Davidson, Inc.</b> Structural 515 West James Street, Suite 102 Lancaster, PA 17603 (717) 481-2991 Jason Vannoy, SE, PE
<b>MES GROUP</b> MEP 550 North Reno Street, Suite 203 Tampa, FL 33609 (813) 289-4700 Nicholas Stephenson, PE		

ARCHITECT/ENGINEER OF RECORD	STAMP
<b>A/E:</b> TRIPLE C - The A/E Group 201 E. Jefferson Street, Suite 200 Syracuse, NY 13202 (315) 484-5958 Mat Perkins	
<b>TRIPLE C - THE A&amp;E GROUP</b>  A MULTI-DISCIPLINARY COMPANY	

Office of Construction and Facilities Management  <b>VA</b> U.S. Department of Veterans Affairs
---

Drawing Title ARCHITECTURAL CEILING DETAILS
Approved:

Phase ISSUED FOR CONSTRUCTION  FULLY SPRINKLERED
--

Project Title NEW COMMUNITY LIVING CENTER
Location 2094 Albany Post Road, Montrose, NY 10548
Issue Date 05/09/2022
Checked H.GARDINER
Drawn E. DANIELS

Project Number 620-334
Building Number CLC
Drawing Number A-551