

A

B

C

D

E

F

A

B

C

D

E

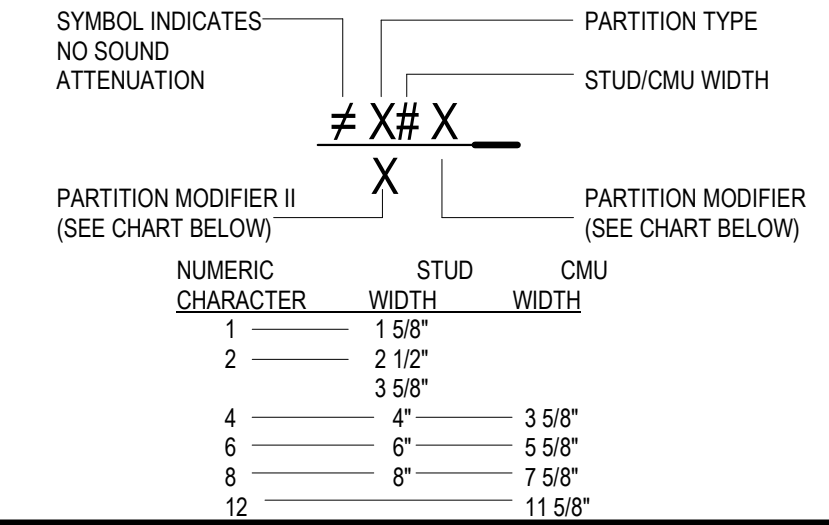
F

GENERAL PARTITION NOTES:

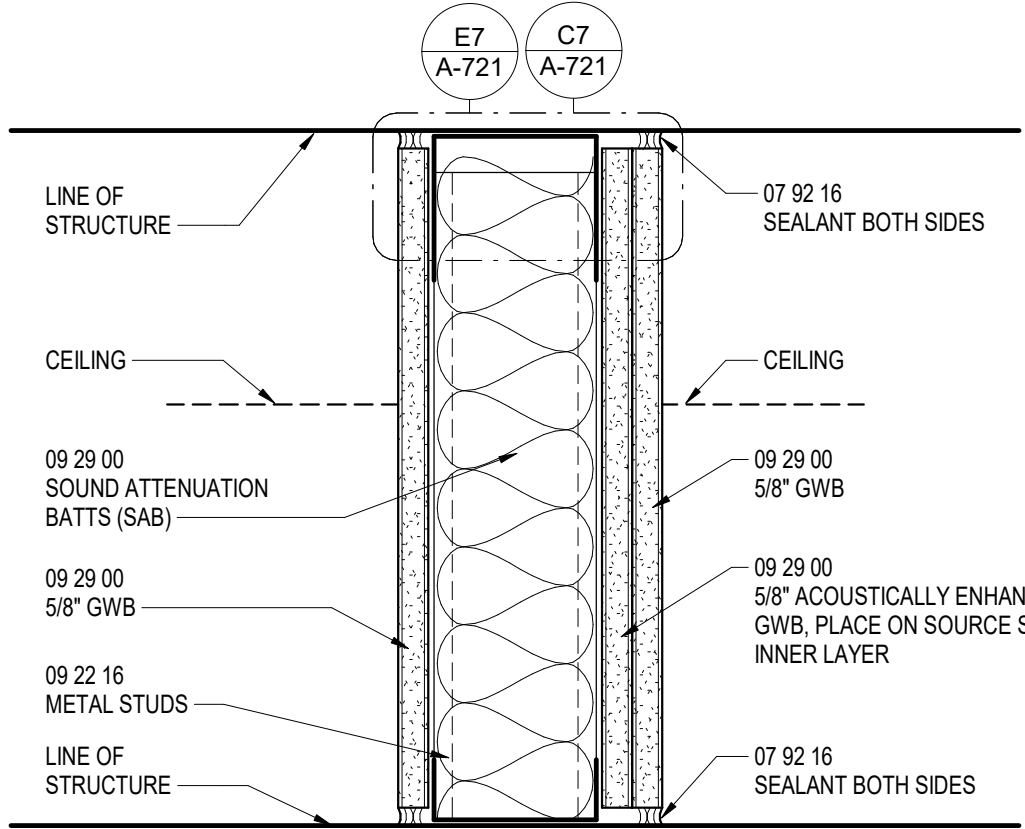
1. PARTITIONS ARE DISTINGUISHED ON FLOOR PLANS BY SYMBOL DESIGNATION, GRAPHIC DESIGNATION OR A COMBINATION OF BOTH DESIGNATIONS. SOME PARTITION TYPES SHOWN ON THIS SHEET MAY NOT BE USED ON THIS PROJECT.
2. ALL WALLS NOT DESIGNATED WITH A GRAPHIC OR TAG TO BE TYPE A. IF UNCLEAR CONTACT ARCHITECT.
3. "METAL STUDS" INDICATED ON THIS SHEET FOR INTERIOR PARTITIONS. REFER TO THOSE SPECIFIED IN SECTION 09 22 16 - NON STRUCTURAL METAL FRAMING. REFER TO SPECIFICATIONS FOR ADDITIONAL CRITERIA SUCH AS MINIMUM STUD SPACING, MINIMUM GAUGE AND PERMISSIBLE DEFLECTION LIMITS. SEE SECTION 05 41 04 LOAD BEARING METAL STUD SYSTEM FOR FRAMING THAT IS OUTSIDE THE SCOPE OF 09 22 16 AND ASTM C754, SUCH AS LONG HEADERS, CANTILEVERED WALLS, TALL WALLS, WALKABLE CEILINGS AND THEIR SUPPORTS, WALLS EXCEEDING SPAN TABLES AND OTHER UNUSUAL FRAMING CONDITIONS.
4. SOUND TRANSMISSION CLASS (STC) IS A RATING SYSTEM THAT DESCRIBES THE ABILITY OF AN ASSEMBLY TO REDUCE THE TRANSMISSION OF SOUND. CONFIGURE SOUND-RATED WALL ASSEMBLIES ACCORDING TO THE MINIMUM REQUIREMENTS STIPULATED IN THE STC TESTS LISTED. STC RATINGS LISTED ARE BASED ON LABORATORY TESTING AND ARE NOT INDICATIVE OF RESULTS IN FIELD.
5. REFER TO SECTION 09 29 00 FOR ACOUSTIC SEALANTS.
6. SOUND ATTENUATION BATTS (SAB) ARE SPECIFIED IN SECTION 09 29 00, WHERE SAB ARE INDICATED, THEY SHALL EXTEND CONTINUOUSLY FROM FLOOR TO STRUCTURE ABOVE.
7. PARTITIONS ARE INDICATED WITH CONVENTIONAL GYPSUM WALLBOARD (U.N.O.), UPGRADE TO PREMIUM TYPES OF WALLBOARD (I.E. MOISTURE RESISTANT, TILE-BACKER BOARD, ACOUSTICALLY ENHANCED, ETC.) BASED ON THEIR LOCATION AND ACCORDING TO REQUIREMENTS OF SECTION 09 29 00.
8. SEALANTS INDICATED MAY BE FOR FIRE RATING, SMOKE RATING, AIR PRESSURE CONTAINMENT, ACOUSTIC RATING, VERMIN CONTROL, MOVEMENT (CRACK) CONTROL AND/OR BIOLOGICAL CONTAINMENT. SEALANT JOINTS ARE TO BE SIZED FOR EXPECTED MOVEMENT OF JOINT WITH EXPANSION/CONTRACTION CAPACITY OF SEALANT MATERIAL TO MAINTAIN THE INTEGRITY OF THE SEAL FOR THESE APPLICABLE PARAMETERS. SEE SPECIFICATION SECTION 07 92 16 FOR INTERIOR JOINT SEALANTS.
9. REFER TO SECTION 07 84 00 FOR HEAD-OF-WALL FIRESTOPPING AND SEALING OF THRU-WALL PENETRATIONS.
10. "LINE OF STRUCTURE" INDICATED FOR EACH PARTITION IS DIAGRAMATIC ONLY AND DOES NOT INDICATE EXACT CONSTRUCTION CONDITIONS OR GEOMETRY.
11. ALL DIMENSIONS ARE FROM FACE TO FACE, OR CENTERLINE TO CENTERLINE, U.N.O. REFER TO PARTITION MATRICES FOR PARTITION WIDTH DIMENSIONS UNLESS INDICATED TO BE SHOWN ON PLAN.
12. LEAD LINING REQUIREMENTS ARE SPECIFIED IN SECTION 09 29 00, WHERE LEAD LINING IS INDICATED IN PLAN, LEAD LINING IS TO BE PLACED ON RADIOGRAPHIC SIDE OF ROOM AND TO EXTEND UP TO 7'-0" A.F.F., U.N.O. LEAD THICKNESS TO BE SPECIFIED BY OWNER'S PHYSICIST REPORT.
13. AT LEAD LINED PARTITIONS THAT ARE ALSO FIRE RATED, REFER TO FIRE UL FIRE RESISTANCE TEST U419, U430 OR U438.
14. FIRE RESISTANT AND FIRE RESISTANT SMOKE BARRIER RATINGS ARE TO CONTINUE THROUGH ALL OPENINGS IN RATED PARTITIONS.
15. SMOKE RESISTANT, FIRE RESISTANT, AND FIRE RESISTANT SMOKE BARRIER PARTITIONS SHALL EXTEND AND SEAL TO INSIDE FACE OF EXTERIOR SHEATHING, INCLUDING EXTENSIONS THROUGH SOFFITS.
16. REFER TO THE TOILET ACCESSORIES SHEET AND CASEWORK SHEET FOR MOUNTING DETAIL INFORMATION.
17. REFER TO SHEET A-721 AND A-722 FOR ADDITIONAL PARTITION DETAILS AND FRAMING INFORMATION.

PARTITION TAGGING LEGEND:

THE TYPICAL PARTITION TAG SYMBOL DESIGNATION HAS TWO CHARACTERS. THE FIRST CHARACTER IS A LETTER INDICATING THE PARTITION TYPE. THE SECOND CHARACTER IS A NUMERIC INDICATION OF THE STUD OR CMU WIDTH. IF A "P" SYMBOL IS SHOWN AS THE FIRST CHARACTER, THIS INDICATES THE PARTITION DOES NOT HAVE SOUND ATTENUATION. IN SOME INSTANCES, AN ADDITIONAL CHARACTER OR "MODIFIER" MAY BE ADDED TO THE END AND/OR THE LINE BELOW TO INDICATE ADDITIONAL CHARACTERISTICS WITHIN THE WALL. REFER TO CHART BELOW FOR MODIFIER DEFINITIONS. IF NO PARTITION TAG OR NUMERIC SECOND CHARACTER EXISTS, THE STUD SIZE WILL BE 3 5/8" TYPICAL, U.N.O.



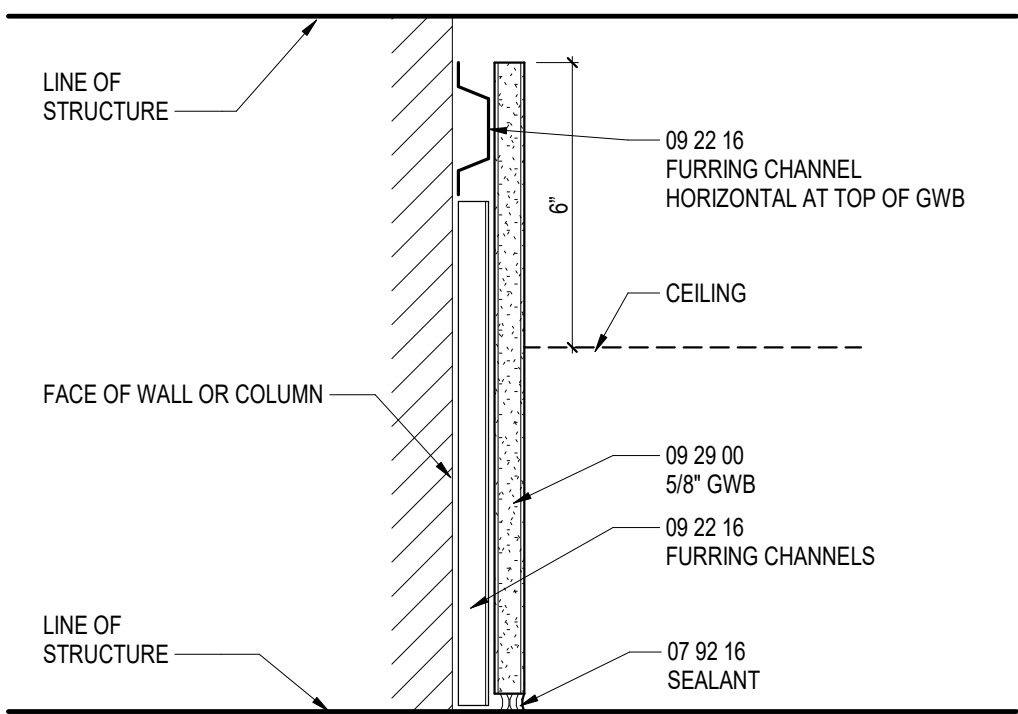
PARTITION MODIFIER	MODIFIER DESCRIPTION
S	PROVIDE SECURITY MESH AT GWB.
T	PROVIDE STAGGERED STUDS WITHIN A SINGLE TRACK, SNAKE SOUND ATTENUATION BATTS AROUND STAGGERED STUDS.
P	PROVIDE ADDITIONAL FINISH PANEL TO BASE PARTITION (WOOD, FRP, PHENOLIC, ACOUSTIC STONE PANELS, ETC.).
M	PROVIDE CONCRETE OR MASONRY CURB AT BASE OF PARTITION (CAN BE UTILIZED AT A KITCHEN OR MECHANICAL ROOM).
IR	PROVIDE 2 LAYERS OF IMPACT RESISTANT GWB LOBBY SIDE OF WALL (ONLY USED AT LOBBY DOORWAY WALL).



(TYPE T) HIGH STC PARTITION

NOTE: FIRE RESISTANCE TEST FOR ONE HOUR RATED WALLS: UL U465

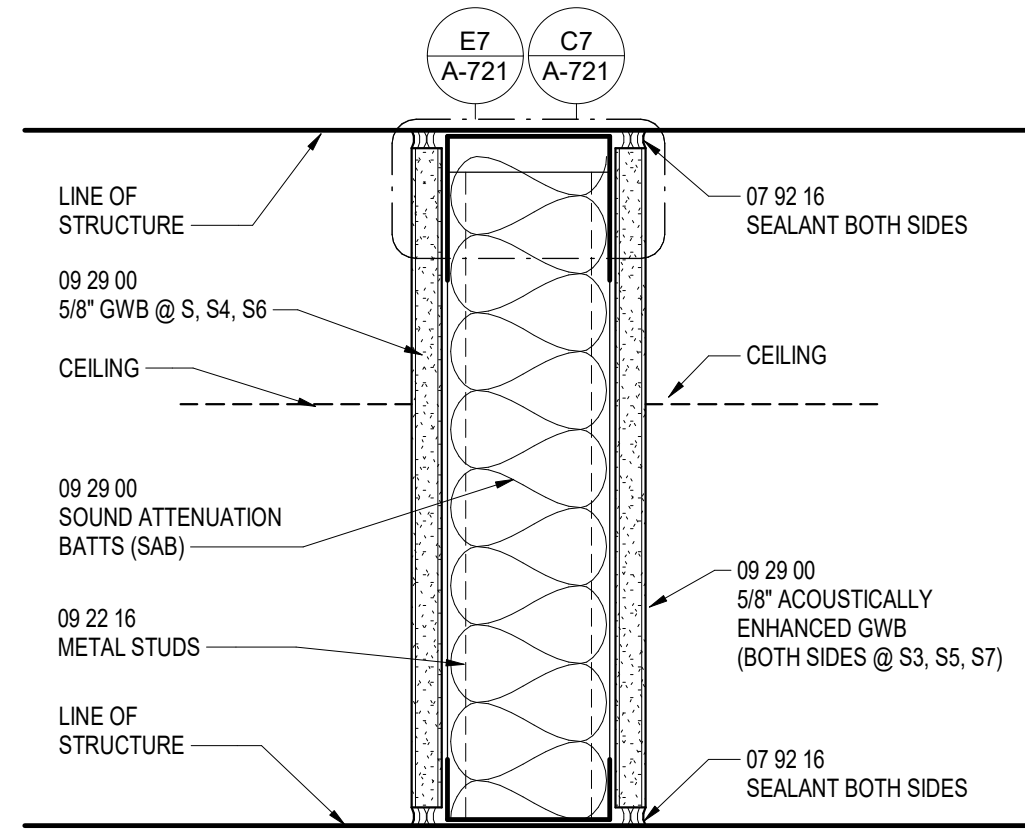
MARK	STUD WIDTH	PRTN WIDTH	DESIGN STC
T3	3 5/8"	5 1/2"	45



(TYPE M) FURRING PARTITION

NOTE: FIRE RESISTANCE TEST FOR ONE HOUR RATED WALLS: UL U465

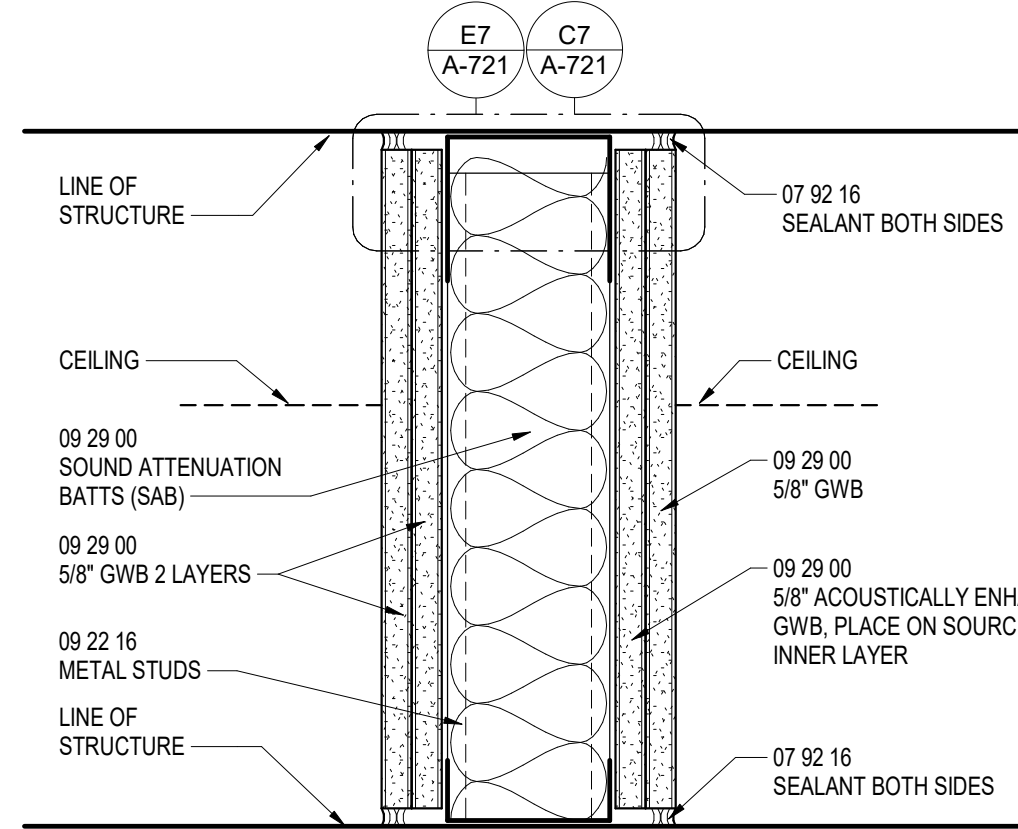
MARK	STUD WIDTH	PRTN WIDTH	DESIGN STC
M	7/8"	1 1/2"	



(TYPE S) STC PARTITION

NOTE: FIRE RESISTANCE TEST FOR ONE HOUR RATED WALLS: UL U465

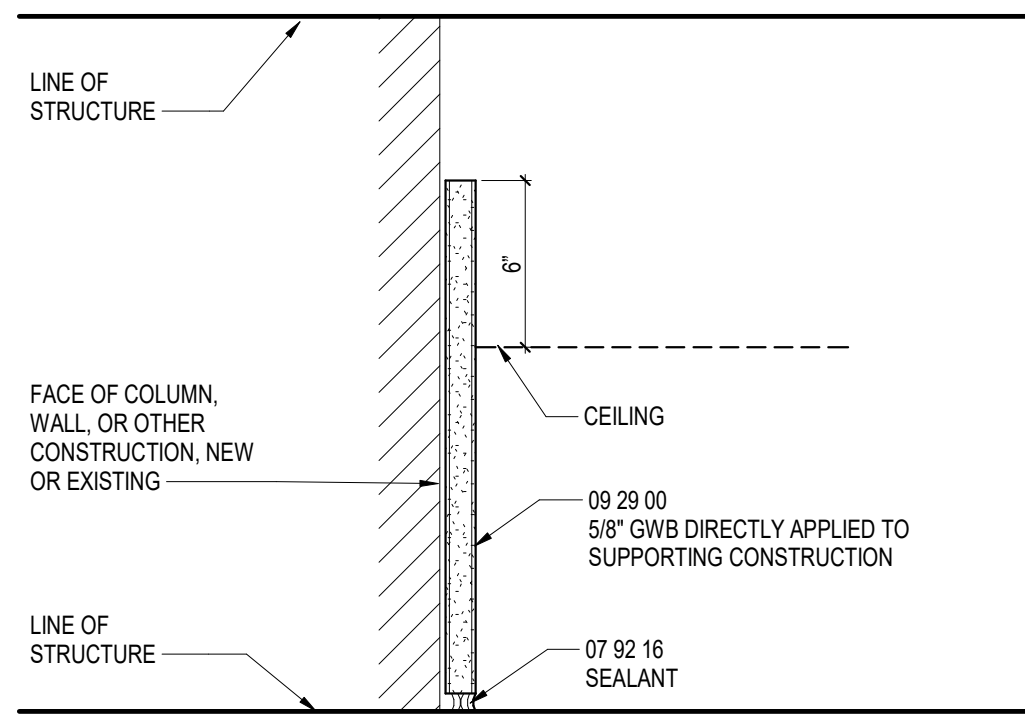
MARK	STUD WIDTH	PRTN WIDTH	DESIGN STC
S4	3 5/8"	5 1/4"	45



(TYPE U) HIGH STC PARTITION

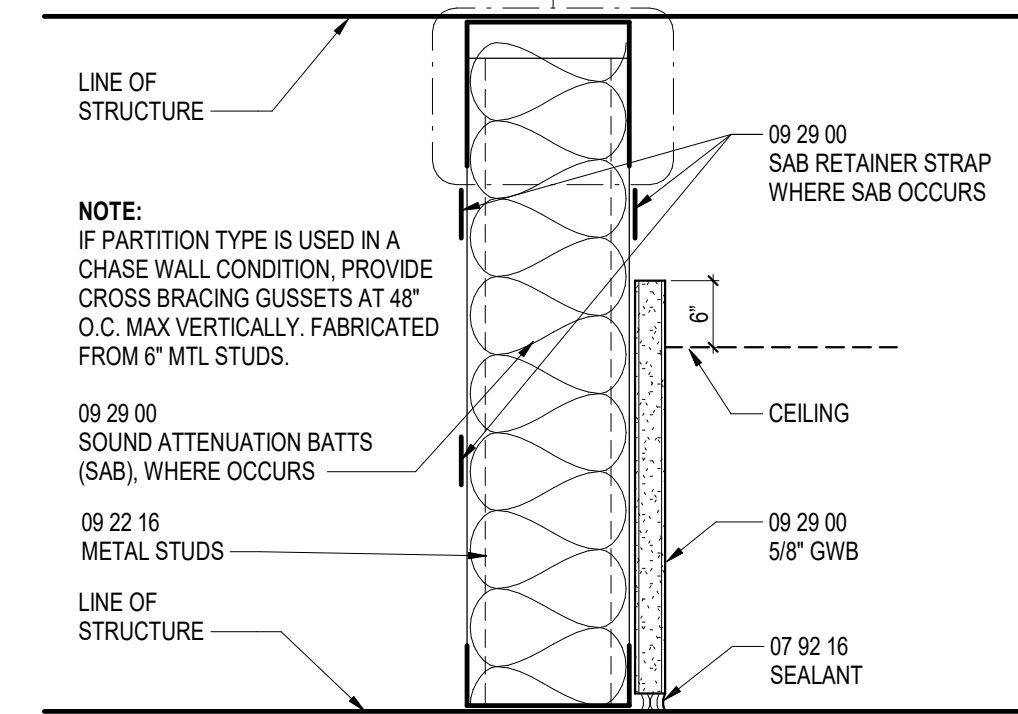
NOTE: FIRE RESISTANCE TEST FOR TWO HOUR RATED WALLS: UL U484, U411

MARK	STUD WIDTH	PRTN WIDTH	DESIGN STC
U4	4"	6 1/2"	50
U6	6"	8 1/2"	50



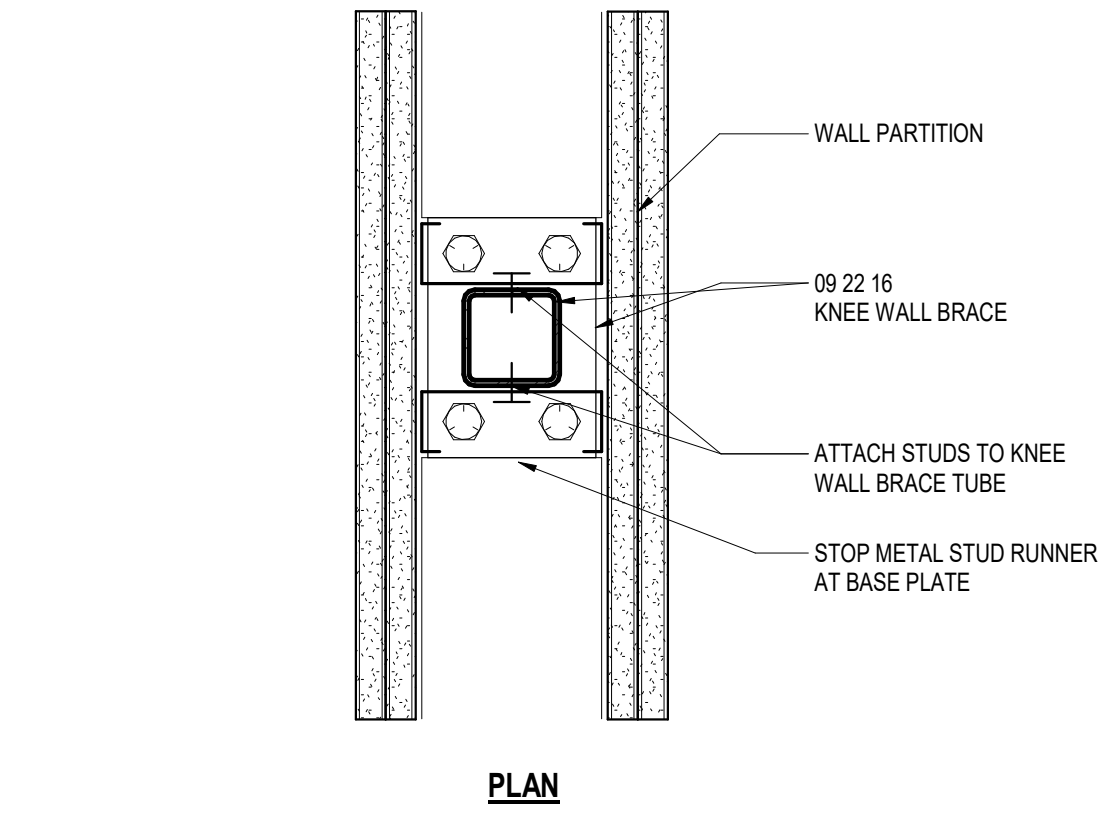
(TYPE N) DIRECT APPLIED

MARK	STUD WIDTH	PRTN WIDTH	DESIGN STC
N		5/8"	
N/A			

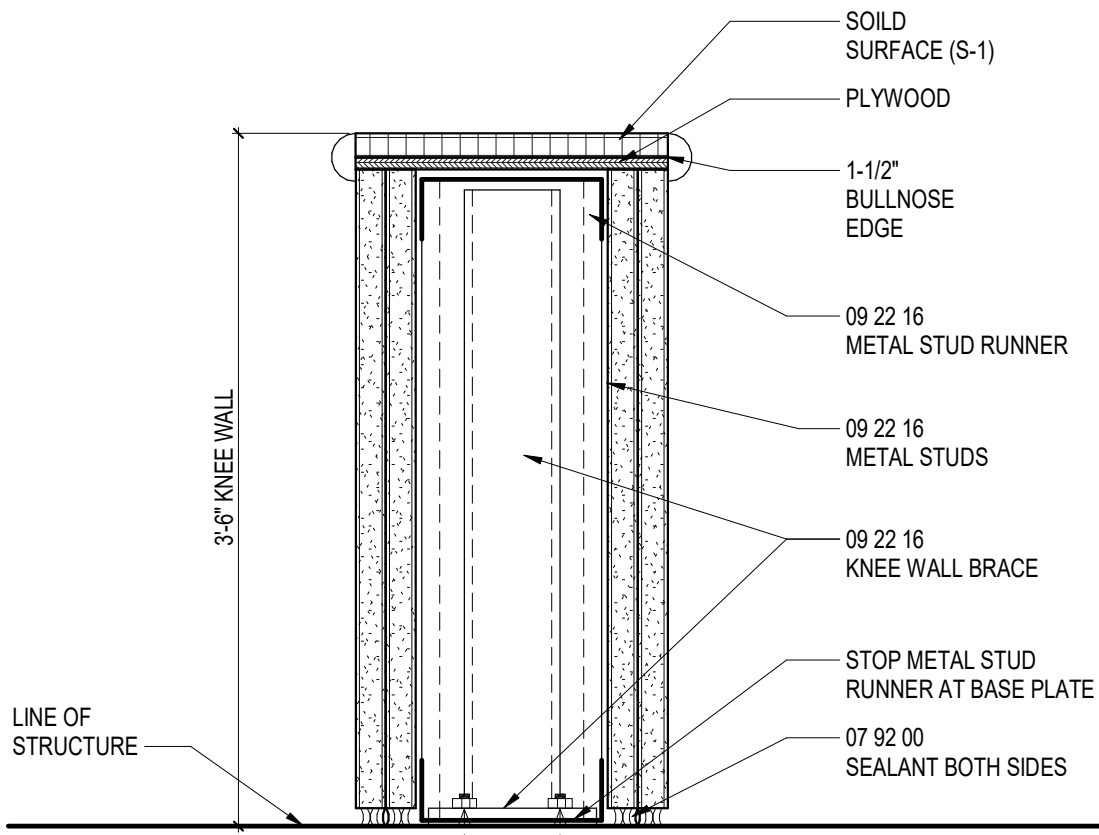


(TYPE J) NON-RATED PARTITION

MARK	STUD WIDTH	PRTN WIDTH	DESIGN STC
J2	2 1/2"	3 1/8"	-
J4	4"	4 5/8"	-
J6	4"	6 5/8"	-

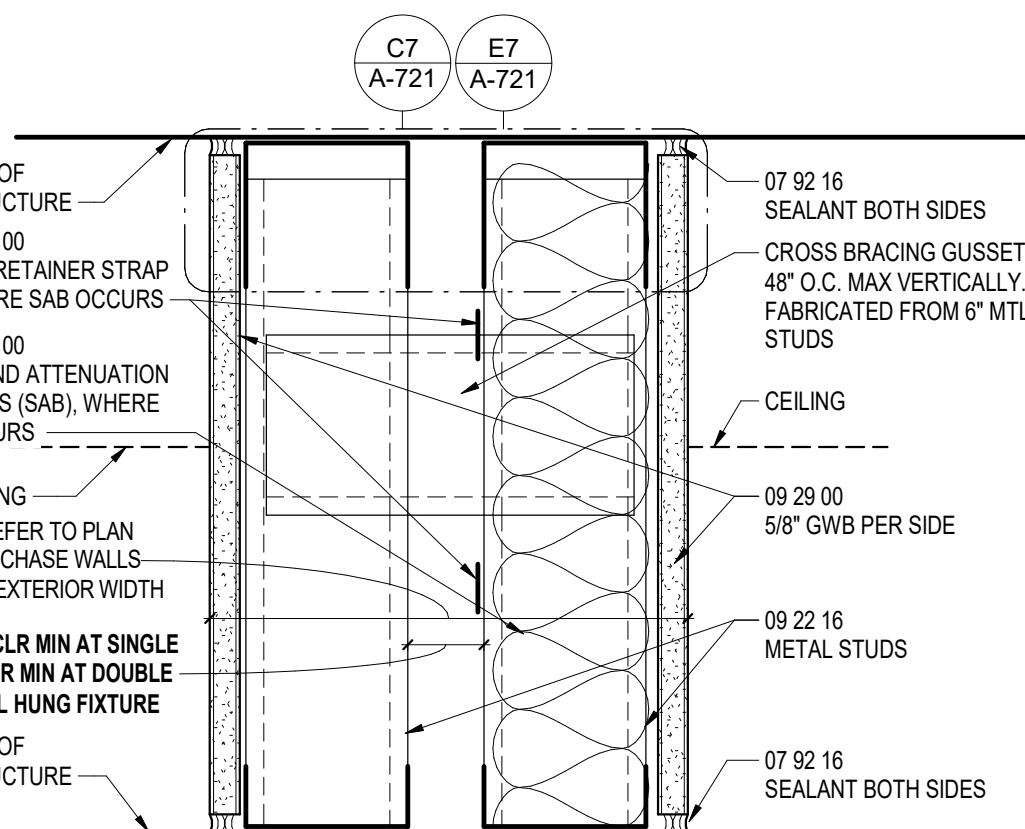


PLAN



SECTION

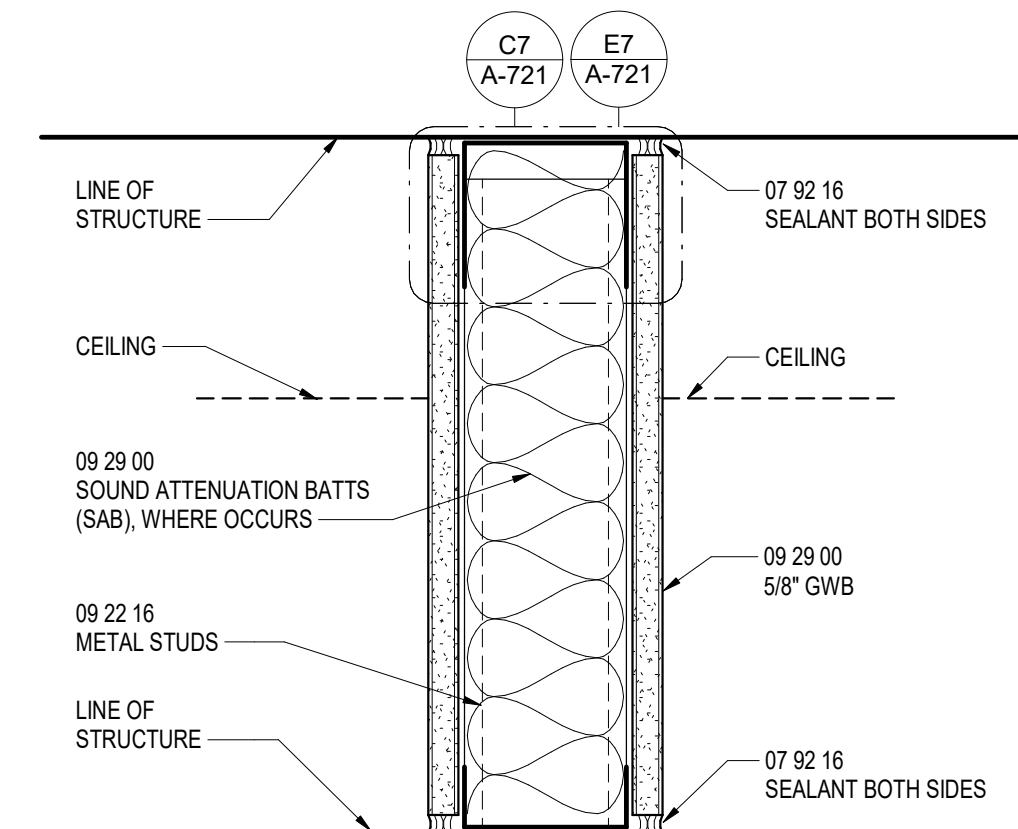
F4 KNEE WALL
3" x 1'-0"



(TYPE E) CHASE PARTITION

NOTE: FIRE RESISTANCE TEST FOR ONE HOUR RATED CHASE WALLS: UL U420

MARK	STUD WIDTH	PRTN WIDTH	DESIGN STC
E3	3 5/8"	4 1/4"	45
E4	4"	4 5/8"	45



(TYPE A) TYPICAL PARTITION

NOTE: FIRE RESISTANCE TEST FOR ONE HOUR RATED WALLS: UL U465

MARK	STUD WIDTH	PRTN WIDTH	DESIGN STC
A1		4 7/8"	35
A2	2 1/2"	3 3/4"	35
A3	3 5/8"	4 7/8"	35
A4	4"	5 1/4"	35
A6	6"	7 1/4"	35
A8	8"	9 1/4"	35

CONSULTANT

NORRIS DESIGN
Landscape Architect
416 North Toole Avenue
Tucson, AZ 85701
(520) 622-9565
Josh Orth, PLA

HINMAN
Protective Design Specialist
240 West 35th St, Suite 1004
New York, NY 10001
(212) 967-4890
Corrine Tan, SE

C.S. Davidson, Inc.
Structural
315 West James Street, Suite 102
Lancaster, PA 17603
(717) 481-2991
Jason Vannoy, SE, PE

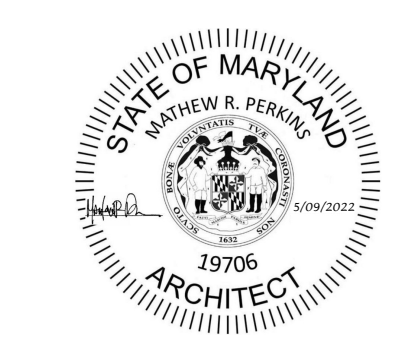
MES GROUP
MEP
550 North Reno Street, Suite 203
Tampa, FL 33609
(813) 289-4700
Nicholas Stephenson, PE

ARCHITECT/ENGINEER OF RECORD

A/E:
TRIPLE C - The A/E Group
201 E. Jefferson Street, Suite 200
Syracuse, NY 13202
(315) 484-5958
Mat Perkins

TRIPLE C - THE A&E GROUP
A MULTI-DISCIPLINARY COMPANY

STAMP



Office of Construction and Facilities Management



Drawing Title

STANDARD PARTITION TYPES

Approved:

Phase

ISSUED FOR CONSTRUCTION

FULLY SPRINKLERED

Project Title

NEW COMMUNITY LIVING CENTER

Location

2094 Albany Post Road, Montrose, NY 10548

Issue Date

05/09/2022

Checked

M. PERKINS

Drawn

E. DANIELS

Project Number

620-334

Building Number

CLC

Drawing Number

A-720