



VIEW 1: SALON



VIEW 4: TYPICAL RESIDENT ALCOVE



VIEW 7: TYPICAL RESIDENT LIVING ROOM



VIEW 2: FOYER



VIEW 5: TYPICAL RESIDENT BEDROOM



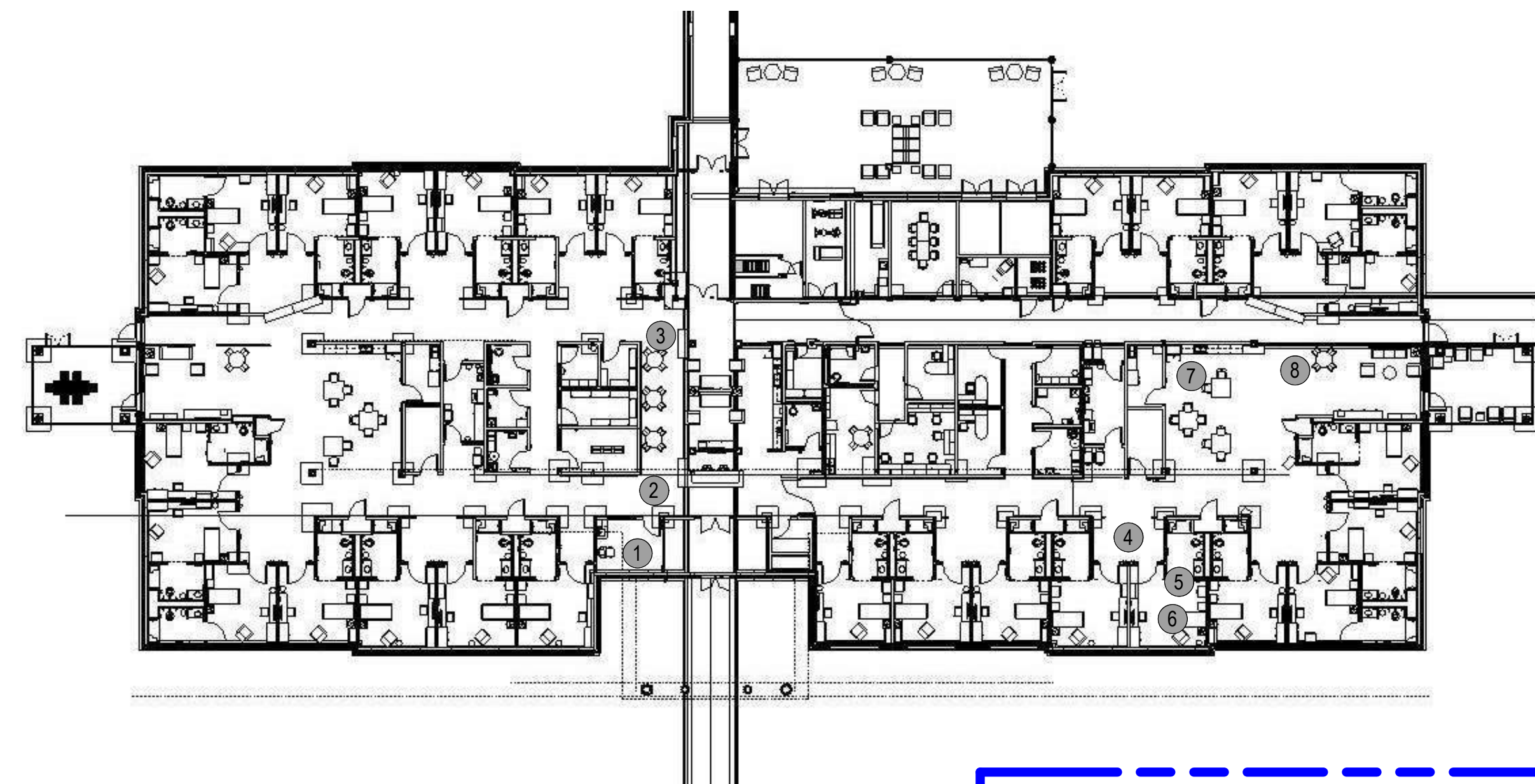
VIEW 8: TYPICAL RESIDENT DINING/ LIVING ROOMS



VIEW 3: ACTIVITY/ KITCHEN



VIEW 6: TYPICAL RESIDENT BEDROOM



RENDERINGS ARE PROVIDED TO ILLUSTRATE DESIGN INTENT ONLY AND SHALL BE CONSIDERED REFERENCE MATERIAL. DESIGN DRAWINGS AND SPECIFICATIONS SHALL BE FOLLOWED FOR ALL CONSTRUCTION RELATED ITEMS PERTAINING TO THIS SCOPE OF WORK.

FOR DEDUCT ALT. LIST SEE G1000 FOR MORE INFORMATION

		CONSULTANT				ARCHITECT/ENGINEER OF RECORD				STAMP	Office of Construction and Facilities Management		Drawing Title INTERIOR RENDERINGS	Phase ISSUED FOR CONSTRUCTION	Project Title NEW COMMUNITY LIVING CENTER		Project Number 620-334	
		<div><div> NORRIS DESIGN Planning / Landscape Architecture / Landscaping</div><div> HINMAN Protective Design Specialist 240 West 35th St. Suite 1004 New York, NY 10001 (212) 967-4890 Corinne Tan, SE</div><div> C.S. Davidson, Inc. Structural 315 West James Street, Suite 102 Lancaster, PA 17603 (717) 481-2991 Jason Vannoy, SE, PE</div><div> MES GROUP MEP 550 North Rex Street, Suite 203 Tampa, FL 33609 (813) 289-4700 Nicholas Stephenson, PE</div></div>				<div><div> TRIPLE C - THE A&E GROUP 201 E. Jefferson Street, Suite 200 Syracuse, NY 13202 (315) 484-5958 Mat Perkins</div><div> TRIPLE C - THE A&E GROUP A MULTI-DISCIPLINE COMPANY</div></div>			VA U.S. Department of Veterans Affairs		Approved:	FULLY SPRINKLERED	Location 2094 Albany Post Road, Montrose, NY 10548		Issue Date 05/09/2022	Checked H.GARDINER	Drawn N. BLANCHARD	Drawing Number IN901
Revisions:		Date:																