

A

B

C

D

E

F

A

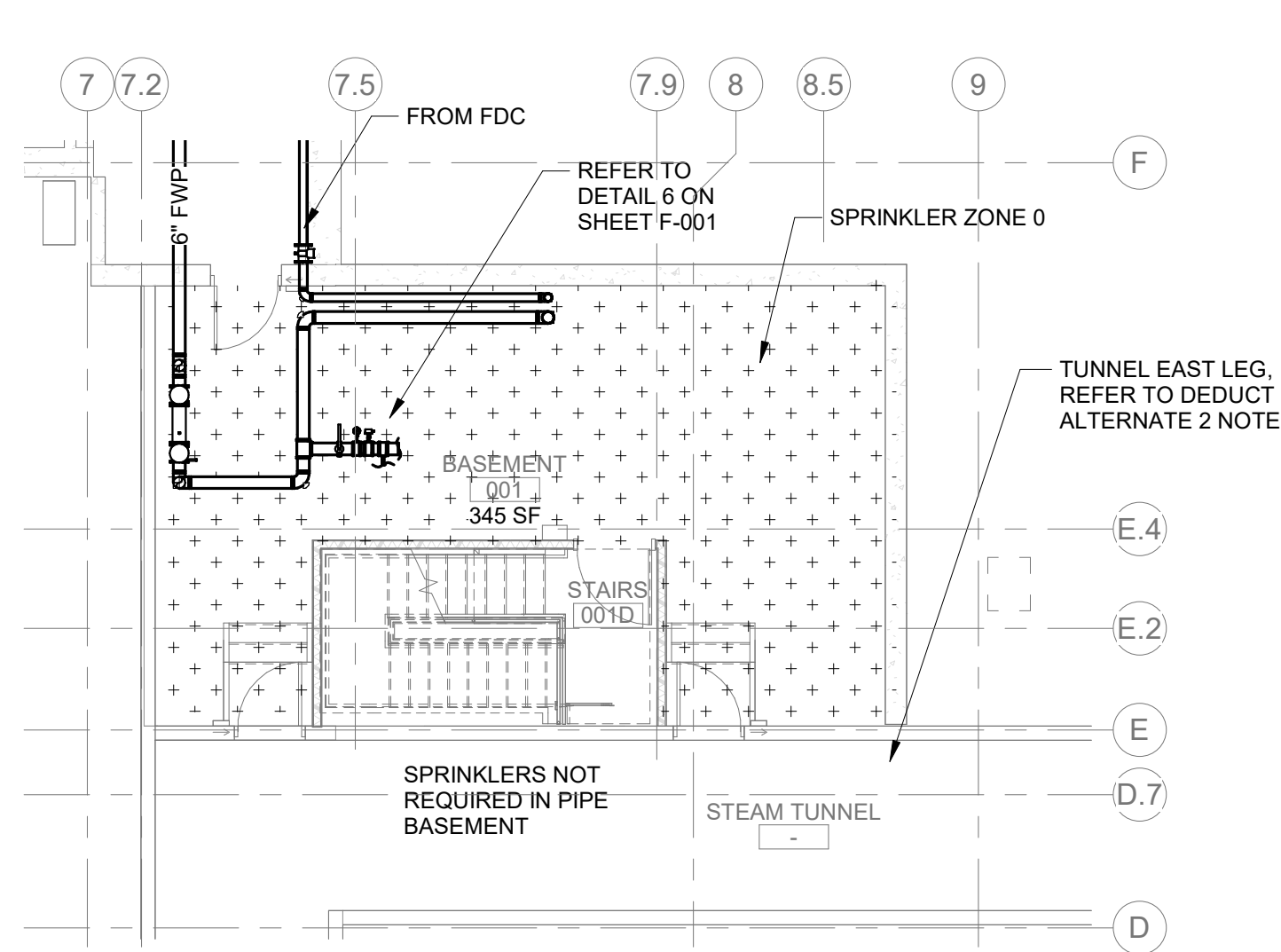
B

C

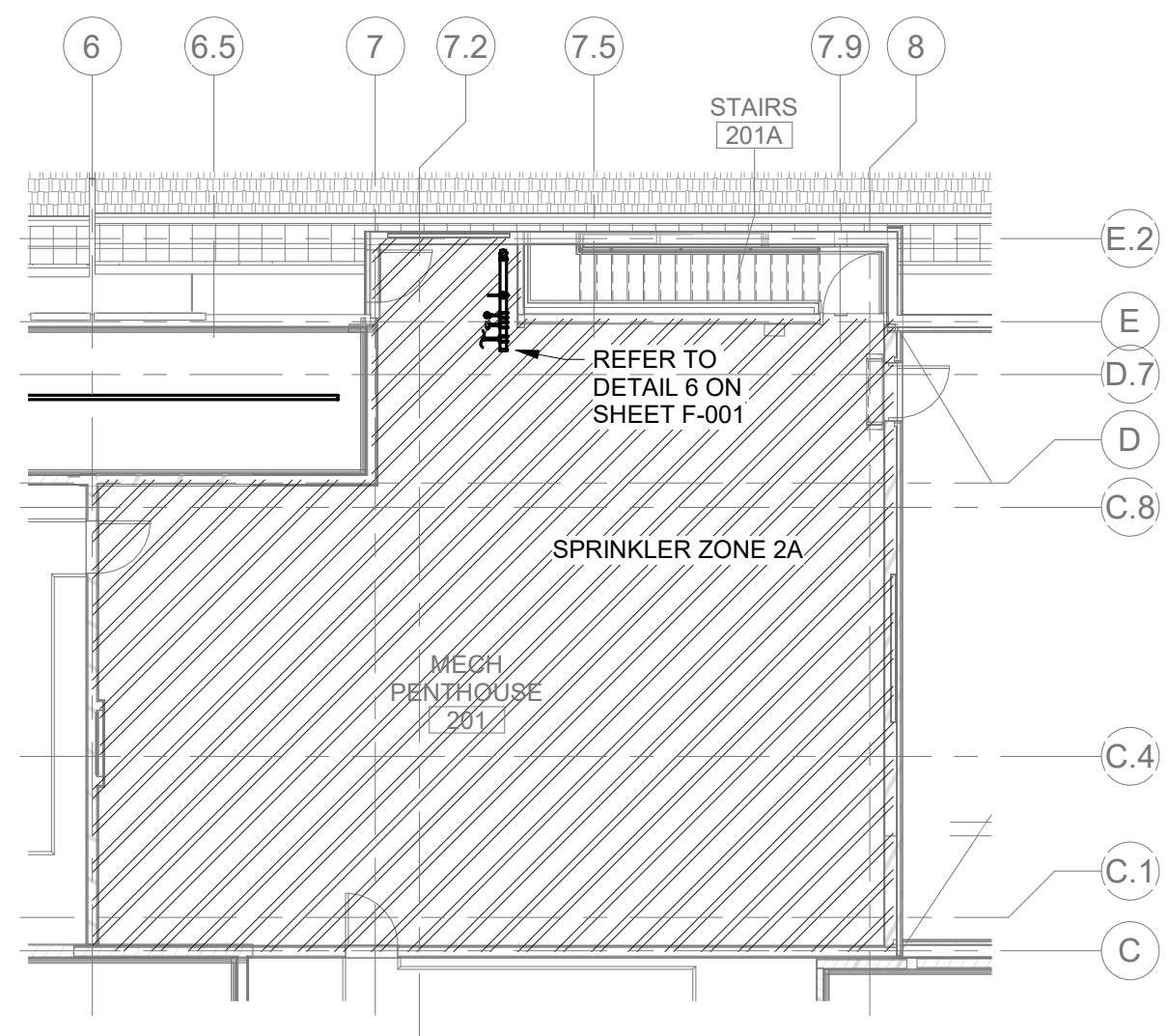
D

E

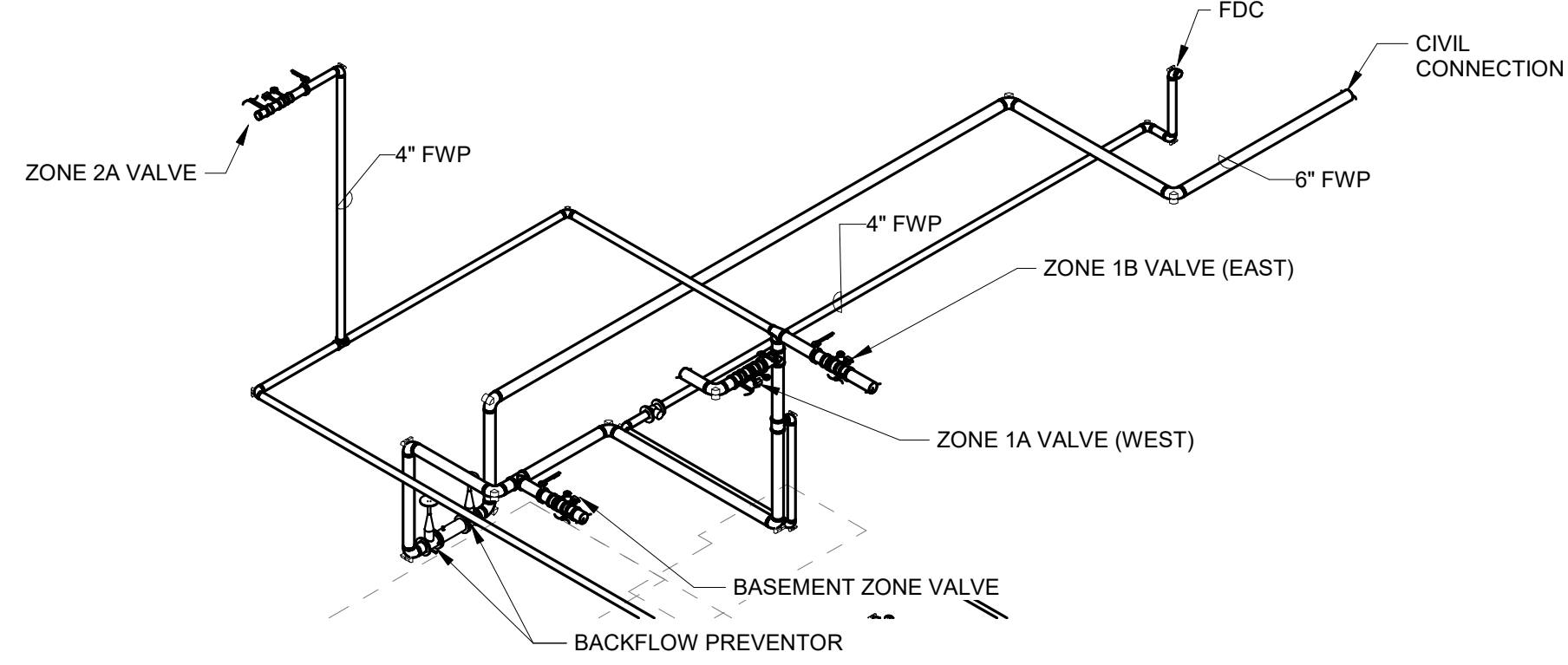
F



2 FIRE PROTECTION ZONE FLOOR PLAN - BASEMENT
1/8" = 1'-0"



3 FIRE PROTECTION ZONE FLOOR PLAN - PENTHOUSE
3/32" = 1'-0"



4 FIRE RISER - ISOMETRIC

PARTITION RATING GRAPHICS:

PARTITION RATING GRAPHIC DESIGNATION:	PRIORITY
1 HR FIRE BARRIER	1 HIGHEST
2 HR FIRE BARRIER	2
2 HR FIRE & SMOKE BARRIER	3
2 HR FIRE BARRIER/SHAFT	4
1 HR FIRE & SMOKE BARRIER	4
1 HR FIRE BARRIER/SHAFT	4
SMOKE PARTITION (NON RATED)	5 LOWEST
NON RATED	

DEDUCT ALTERNATE

(DEDUCTIVE ALTERNATES ARE CASCADING AND MUST BE EXERCISED IN THE ORDER PRESENTED) FOR A DETAILED DESCRIPTION OF EACH DEDUCTIVE ALTERNATE REFER TO COVER SHEET ON 01000

DEDUCTIVE ALTERNATE #2: ELIMINATE TUNNEL (EAST LEG)

FIRE PROTECTION NOTES

- MODIFY EXISTING SPRINKLER SYSTEM WITHIN THE LIMIT OF CONSTRUCTION AS INDICATED ON THE CONTRACT DRAWINGS FOR THIS PROJECT. PROVIDE TEMPORARY UPRIGHT SPRINKLER HEADS TO PROTECT SPACES WHERE CEILINGS ARE REMOVED FOR CONSTRUCTION AND UNTIL NEW CEILINGS ARE INSTALLED AND NEW DROPS TO NEW PENDENT SPRINKLERS ARE INSTALLED, UNLESS OTHERWISE INDICATED EXISTING FIRE PROTECTION SYSTEMS AND EQUIPMENT ARE TO REMAIN. REFER TO ARCHITECTURAL DRAWINGS FOR PHASING AND WALL CONSTRUCTION.
- THESE DOCUMENTS REPRESENT THE DESIGN INTENT AND COVERAGE AREA FOR THE FIRE SPRINKLER SYSTEM WITHIN THE PROJECT SCOPE. THE CONTRACTOR IS RESPONSIBLE FOR PROVIDING A COMPLETE FIRE SPRINKLER SYSTEM APPROVED PER NFPA AND BY THE AUTHORITY HAVING JURISDICTION. PROVIDE HYDRAULIC CALCULATIONS, SHOP DRAWINGS, AND ANY ADDITIONAL EQUIPMENT NECESSARY TO COMPLETE THE INSTALLATION AND COMPLY WITH THE SPECIFICATIONS AND ALL APPLICABLE CODES AND CRITERIA.
- ALL FIRE PROTECTION WORK SHALL MEET ALL THE REQUIREMENTS OF NFPA 13, 14, AND 101. VA FIRE PROTECTION DESIGN MANUAL, INTERNATIONAL BUILDING CODE 2018, AND APPLICABLE OSHA AND EPA REGULATIONS AND GUIDELINES. WHERE CONFLICTS BETWEEN CODE AND CONSTRUCTION DOCUMENTS OCCUR, THE MOST RESTRICTIVE REQUIREMENTS SHALL GOVERN.
- THE CONTRACTOR SHALL SUBMIT A SEPARATE PERMIT APPLICATION AND PLANS FOR REVIEW ACCORDING TO NFPA 1 (2018 EDITION), SECTION 1.14.
- A CONTRACTOR'S MATERIAL AND TEST CERTIFICATE SHALL BE COMPLETED IN ACCORDANCE WITH NFPA 13 AND FORWARDED TO THE OWNER'S REPRESENTATIVE.
- ALL MATERIAL SHALL BE OF APPROVED QUALITY AND THE WORK SHALL BE DONE IN A THOROUGH AND WORKMANLIKE MANNER. THE WORK, MATERIALS AND TEST SHALL BE IN ACCORDANCE WITH THE CURRENT REQUIREMENTS OF NFPA 13.
- THE SUBMISSION OF A PROPOSAL SHALL BE CONSTRUED AS EVIDENCE THAT THE CONTRACTOR HAS FAMILIARIZED THEMSELVES WITH THE PLANS AND BUILDING SITE. CLAIMS MADE SUBSEQUENT TO THE PROPOSAL FOR MATERIALS AND LABOR BECAUSE OF DIFFICULTIES ENCOUNTERED WILL NOT BE RECOGNIZED IF THEY COULD HAVE BEEN FORESEEN HAD PROPER EXAMINATION BEEN MADE.
- MAINTAIN THE INTEGRITY OF ALL FIRE AND SMOKE RATED WALLS, PARTITIONS, CEILINGS, AND FLOOR ASSEMBLIES. SEAL ALL PENETRATIONS THROUGH RATED ASSEMBLIES WITH FIRESTOP MATERIAL IN ACCORDANCE WITH UL REQUIREMENTS TO MAINTAIN THE ASSEMBLY RATING. REFER TO ARCHITECTURAL DOCUMENTS FOR LOCATIONS OF SMOKE AND/OR FIRE RATED WALLS. REFER TO PENETRATION DETAILS FOR FIRE PROTECTION PIPING PENETRATIONS THROUGH RATED ASSEMBLIES.
- THE SPACING AND SIZES OF SPRINKLERS AND PIPES SHALL CONFORM TO THE REQUIREMENTS OF NFPA 13. SPRINKLERS SHALL BE INSTALLED BY PERSONNEL WHO HAVE ENGINEERING FACILITIES AND EXPERIENCE IN SUCH WORK AND WHO ARE REGULARLY EMPLOYED TO DO SUCH WORK.
- FIRE SPRINKLER CONTRACTOR SHALL COORDINATE THE LOCATION OF RISERS, CROSS MAINS, BRANCH LINES, AND SPRINKLER HEADS WITH ALL OTHER TRADE SYSTEMS TO AVOID CONFLICTS AND MAINTAIN ARCHITECTURAL ELEMENTS OF THE BUILDING. CONTRACTOR TO PROVIDE COORDINATION DRAWING TO COR PRIOR TO CONSTRUCTION.
- PIPE HANGERS SHALL BE SPACED AND LOCATED ACCORDING TO NFPA 13.
- ALL BRANCH LINES SERVING ONE SPRINKLER SHALL BE 1" MINIMUM, UNLESS OTHERWISE NOTED.
- INSTALL ALL SPRINKLERS ACCORDING TO THEIR LISTINGS, SPACING, AND OBSTRUCTION REQUIREMENTS.
- COORDINATE SPRINKLER HEAD TYPES AND LOCATIONS WITH ARCHITECTURAL FINISHES, CEILING, LIGHTING, DUCTS, PIPING, OTHER CEILING MOUNTED DEVICES, AND STRUCTURAL COMPONENTS.
- LIGHT FIXTURES AND HVAC DIFFUSERS TAKE PRECEDENCE. ADD ADDITIONAL SPRINKLERS AT NO ADDITIONAL COST AND AS NECESSARY TO MEET COVERAGE REQUIREMENTS IN ACCORDANCE WITH NFPA 13.
- INSTALL SPRINKLERS IN THE CENTER OF CEILING TILES WHEN POSSIBLE. PROVIDE RETURN BENDS AT ALL SPRINKLER LOCATIONS TO ALLOW FIELD ADJUSTMENT.
- FOR MECHANICAL ROOMS, DETERMINE THE FINAL LOCATION OF SPRINKLERS AFTER EQUIPMENT AND DUCTWORK ARE INSTALLED. PROVIDE ADDITIONAL SPRINKLERS, IF NECESSARY, TO PROVIDE ADEQUATE COVERAGE IN ACCORDANCE WITH NFPA.
- PROVIDE A UL LISTED SPRINKLER GUARD IN LOCATIONS WHERE SPRINKLERS ARE SUBJECT TO MECHANICAL DAMAGE, INCLUDING IN MECHANICAL ROOMS, ELECTRICAL ROOMS, STAIRWELL LANDINGS, ELEVATOR SHAFTS, AND ON ALL SPRINKLERS INSTALLED BELOW 7'-0" AFF.
- PIPING: SPRINKLER PIPING SHALL BE SCHEDULE 40 BLACK STEEL PIPE AND FITTINGS CONFORMING TO ASTM A53. MINIMUM SIZE IS ONE (1) INCH. SCHEDULE 10 MAY BE USED FOR 2 1/2" AND LARGER. DO NOT THREAD THINWALL PIPE.
- PIPE SUPPORTS: PROVIDE HANGERS, CLAMPS, RODS AND OTHER ACCESSORIES OF AN APPROVED TYPE AND IN SUFFICIENT NUMBER TO PROPERLY SUPPORT ALL PIPING. PIPING SHALL BE SUPPORTED BY ROUND WROUGHT U-TYPE APPROVED ADJUSTABLE HANGERS.
- SPRINKLERS SHALL BE FM APPROVED QUICK RESPONSE IN ALL AREAS EXCEPT WHERE SPECIFICALLY PROHIBITED, IN COMPLIANCE WITH VA GUIDELINES AND NFPA REQUIREMENTS.
- SPRINKLERS SHALL BE 1/2" ORIFICE TYPE OF ORDINARY DEGREE RATING EXCEPT WHERE EXCESSIVE TEMPERATURES ARE ANTICIPATED. IN THESE LOCATIONS PROVIDE HIGH TEMPERATURE SPRINKLERS INSTALLED IN ACCORDANCE WITH NFPA 13. PROVIDE QUICK RESPONSE SPRINKLERS IN LIGHT HAZARD AREAS.
- PROVIDE AND MAINTAIN A MINIMUM OF 18 INCHES CLEARANCE BETWEEN THE BOTTOM OF THE SPRINKLER DEFLECTOR AND THE TOP OF STORAGE, FILES, ETC.
- PAIN ALL EXPOSED FIRE SPRINKLER PIPING RED.

FIRE SPRINKLER ZONE AREAS

Sprinkler Zone	Area
Sprinkler Zone 0	552.66 SF
Sprinkler Zone 1A	12,923.88 SF
Sprinkler Zone 1B	10,670.47 SF
Sprinkler Zone 2A	1,500.71 SF
Grand total: 144	25,647.73 SF



KEY PLAN

7/27/2021 1:32:15 PM

BM 360-0620-334 New Community Living Center(1857)_MEP-VA Montrose CLC_R20.rvt

F

1 FIRE PROTECTION ZONE FLOOR PLAN - LEVEL 1
3/32" = 1'-0"

CONSULTANT

NORRIS DESIGN
Landscape Architect
416 North Toole Avenue
Tucson, AZ 85701
(520) 622-9565
Josh Orth, PLA

HINMAN
Protective Design Specialist
240 West 35th St. Suite 1004
New York, NY 10001
(212) 967-4890
Corinne Tan, SE

C.S. Davidson, Inc.
Structural
515 West James Street, Suite 102
Lancaster, PA 17603
(717) 481-2991
Jason Vannoy, SE, PE

MES GROUP
MEP
550 North Rex Street, Suite 203
Tampa, FL 33609
(813) 289-4700
Nicholas Stephenson, PE

ARCHITECT/ENGINEER OF RECORD

A/E:
TRIPLE C - The A/E Group
201 E. Jefferson Street, Suite 200
Syracuse, NY 13202
(315) 484-5958
Mat Perkins



STAMP



Office of
Construction
and Facilities
Management

VA U.S. Department
of Veterans Affairs

Drawing Title

FIRE PROTECTION OVERALL FLOOR PLAN -
LEVEL 1

Approved:

Phase

ISSUED FOR
CONSTRUCTION

FULLY SPRINKLERED

Project Title

NEW COMMUNITY LIVING
CENTER

Location

2094 Albany Post Road, Montrose, NY 10548

Issue Date

05/09/2022

Checked

CJF/NPS

Drawn

NS

Project Number

620-334

Building Number

CLC

Drawing Number

FP101