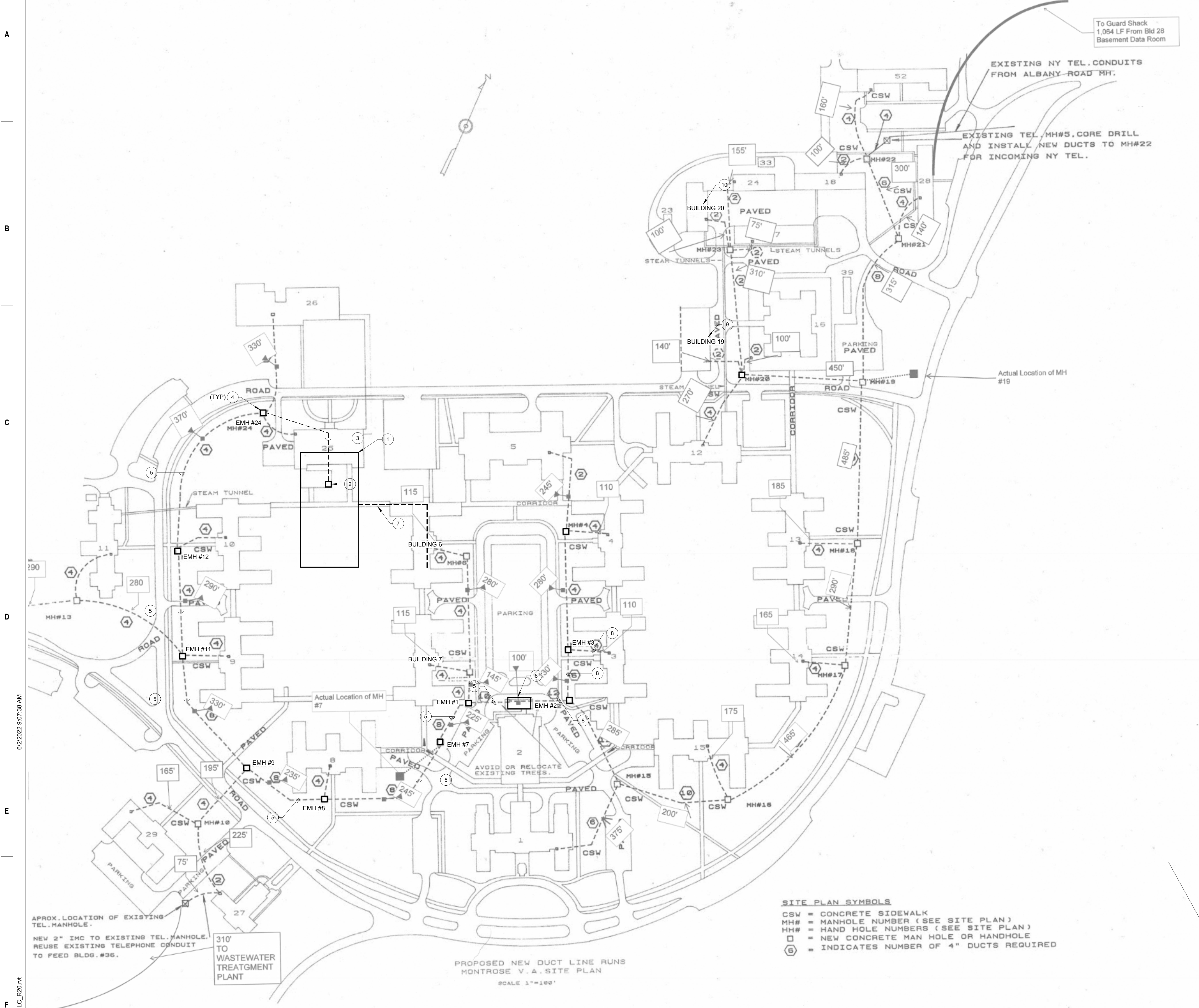


6/2/2022 9:07:38 AM
BM 360-020-334 New Community Living Center (1587) MEP - VA Montrose CLC R20-04

A
B
C
D
E
F



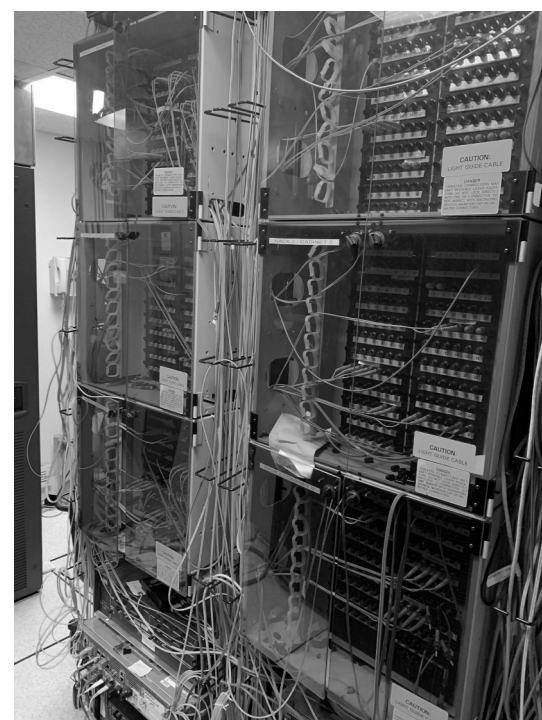
1 SPECIAL SYSTEMS RENOVATION OVERALL SITE PLAN

CONSULTANT NORRIS DESIGN Landscape Architect 416 North Toole Avenue Tucson, AZ 85701 (520) 622-9565 Josh Orth, PLA		HINMAN Protective Design Specialist 240 West 35th St. Suite 1004 New York, NY 10001 (212) 967-4890 Corrine Tan, SE		C.S. Davidson, Inc. Structural 515 West James Street, Suite 102 Lancaster, PA 17603 (717) 481-2991 Jason Vannoy, SE, PE		MES GROUP MEP 550 North Rex Street, Suite 203 Tampa, FL 33609 (813) 289-4700 Nicholas Stephenson, PE	
ARCHITECT/ENGINEER OF RECORD A/E: TRIPLE C - The A/E Group 201 E. Jefferson Street, Suite 200 Syracuse, NY 13202 (315) 484-5958 Mat Perkins		TRIPLE C - THE A&E GROUP A MULTI-DISCIPLINARY COMPANY		STAMP 		Office of Construction and Facilities Management VA U.S. Department of Veterans Affairs	

KEYNOTES	GENERAL NOTES
<div>1. NEW CLC BUILDING.</div> <div>2. APPROXIMATE LOCATION OF IT CLOSET 105. SEE SHEET EY102A FOR ADDITIONAL INFORMATION.</div> <div>3. NEW CONCRETE ENCASED DUCTBANK WITH 100 PAIR TELEPHONE CABLE. 48 STRAND SINGLE MODE FIBER FOR IT, 48 STRAND SINGLE MODE FIBER FOR ELECTRONICS AND PULL STRINGS TO EXISTING MANHOLE, EMH#24.</div> <div>4. EXISTING MANHOLE, EMH.</div> <div>5. RUN NEW 100 PAIR TELEPHONE CABLE FIBER AND PULL STRINGS IN EXISTING CONCRETE ENCASED DUCTBANK TO TELEPHONE SWITCHGEAR ROOM 14 LOCATED IN BUILDING 2. PULL AND TERMINATE TO FIBER RACK.</div> <div>6. APPROXIMATE LOCATION OF EXISTING TELEPHONE SWITCHGEAR IN BUILDING 2, ROOM 14.</div> <div>7. NEW CLC'S FIRE ALARM SYSTEM SHALL TIE INTO EXISTING FIRE ALARM LOOP SYSTEM VIA SPARE FIBER LOCATED IN BUILDING 6. COORDINATE EXACT LOCATION WITH VA COR PRIOR TO INSTALLATION. PULL NEW MULTIMODE FIBER IN 2" CONDUIT FOR CLC'S FIRE ALARM SYSTEM TO BUILDING 6 THROUGH CONNECTING CORRIDOR. CONTRACTOR SHALL HIRE ONE OF THE FOLLOWING FIRE ALARM VENDORS TO PERFORM ALL NECESSARY FIRE ALARM DESIGNS, INSTALLATION, PROGRAMMING, TESTING AND CERTIFICATION: <div>1) SIRINA FIRE PROTECTION (516) 942-0400 2) AFA PROTECTIVE SYSTEMS (914) 347-5481 3) HURTVET SUBCONTRACTING (251) 648-3210</div></div> <div>8. RUN NEW 48 STRAND SINGLE MODE FIBER WITH PULL STRINGS IN EXISTING CONCRETE ENCASED DUCT BANK TO SECOND FLOOR SERVER ROOM IN BUILDING 3. ENSURE A MINIMUM OF 200' L OF FIBER IS PROVIDED FROM ENTRY POINT OF BUILDING TO SERVER ROOM LOCATION.</div> <div>9. BUILDING #19 - FIRE DEPARTMENT. PROVIDE ANNUNCIATOR PANEL PROGRAMMED FOR ALARM AND TROUBLE SIGNALS. IT IS THE RESPONSIBILITY OF THE CONTRACTOR TO ENSURE THE ANNUNCIATORS PANEL RECEIVE POWER BY TYING CIRCUIT TO EXISTING BUILDING'S FACP CIRCUIT. PROVIDE NAC PANEL AS REQUIRED. SEE "CLC FIRE ALARM REQUIREMENTS" FOR ADDITIONAL INFORMATION.</div> <div>10. BUILDING #20 - BOILER PLANT. PROVIDE ANNUNCIATOR PANEL PROGRAMMED FOR TROUBLE SIGNALS. IT IS THE RESPONSIBILITY OF THE CONTRACTOR TO ENSURE THE ANNUNCIATORS PANEL RECEIVE POWER BY TYING CIRCUIT TO EXISTING BUILDING'S FACP CIRCUIT. PROVIDE NAC PANEL AS REQUIRED. SEE "CLC FIRE ALARM REQUIREMENTS" FOR ADDITIONAL INFORMATION.</div>	<div>A. ELECTRICAL CONTRACTOR SHALL MEET WITH THE VA PROJECT ENGINEER AT THE SITE TO VERIFY TERMINATION LOCATION, ROUTING OF CONDUITS AND ROUGH-IN REQUIREMENTS PRIOR TO COMMENCING ANY WORK ON THIS SITE.</div> <div>B. ELECTRICAL CONTRACTOR SHALL MEET WITH LOCAL LOW VOLTAGE SYSTEM PROVIDER AT THE SITE TO VERIFY TERMINATION LOCATION, ROUTING OF CONDUITS AND ROUGH-IN REQUIREMENTS PRIOR TO COMMENCING ANY WORK ON THIS SITE.</div> <div>C. ELECTRICAL CONTRACTOR SHALL CONTACT LOCAL UTILITY UNDERGROUND LOCATING SERVICE COMPANY PRIOR TO DIGGING ON THIS SITE.</div> <div>D. ELECTRICAL CONTRACTOR SHALL COORDINATE WITH STRUCTURAL ENGINEER FOR CONDUIT OPENING IN STRUCTURAL SUPPORT.</div> <div>E. ALL EXTERIOR ELECTRICAL DEVICES AND ENCLOSURE SHALL BE RATED NEMA 3R.</div>
BUILDING 3 GENERAL NOTES	
<div>A. FROM EXISTING TELECOMMUNICATION MANHOLE - EMH #3, PULL NEW FIBER USING EXISTING SPARE CONDUIT STUBBED UP IN TELEPHONE CLOSET 1B.</div> <div>B. CORE DRILL AT THE FOLLOWING LOCATION: <div>1. FIRST FLOOR SLAB IN CLOSET 1A THROUGH CLOSET 101A.</div><div>2. SECOND FLOOR SLAB IN CLOSET 101A THROUGH CLOSET 201.</div></div> <div>C. PULL NEW FIBER FROM TELEPHONE CLOSET 1B THROUGH NEWLY CREATED CORE DRILLS UP TO SECOND FLOOR CLOSET 201.</div> <div>D. RUN NEW FIBER THROUGH CORRIDORS 246T AND 247Z TO TERMINATION LOCATION, SECOND FLOOR SERVER ROOM, ROOM 214.</div>	
CLC'S FIRE ALARM REQUIREMENTS	
<div>A. CONTRACTOR SHALL PROVIDE A NEW STAND ALONE FIRE ALARM CONTROL PANEL.</div> <div>B. PROVIDE NEW (2) ANNUNCIATOR PANELS; (1) IN BUILDING #19 AND (1) IN BUILDING #20. CONTRACTOR IS RESPONSIBLE FOR ALL ELECTRICAL CONNECTIONS, FIRE ALARM CONNECTION TIE-IN, TESTING AND CERTIFICATION FOR BOTH LOCATIONS. <div>1. BUILDING #19 - LOCATE ADJACENT TO EXISTING FACP ON GROUND LEVEL. COORDINATE WITH COR PRIOR TO INSTALLATION.</div><div>2. BUILDING #20 - LOCATE ADJACENT TO EXISTING FACP ON GROUND LEVEL. PROVIDE TROUBLE ALARM AND MONITOR MODULE. COORDINATE WITH COR PRIOR TO INSTALLATION.</div></div>	



2 ELECTRONICS FIBER RACK BLDG2
NOT TO SCALE



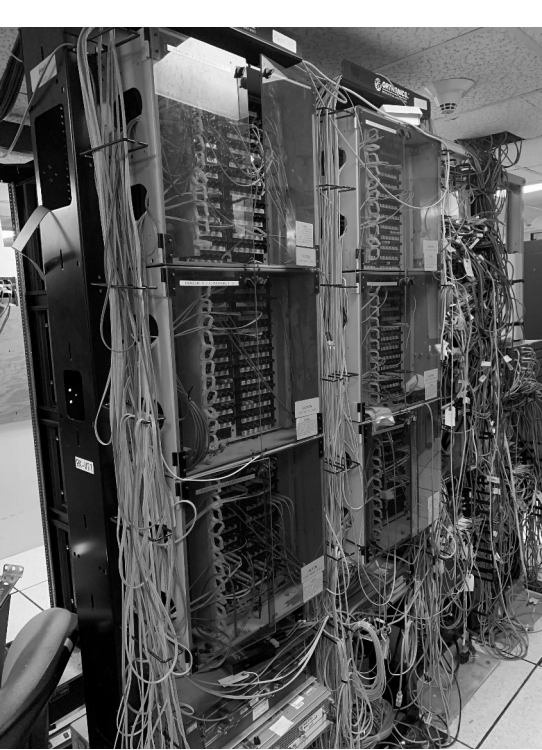
3 SERVER ROOM 214, FIBER
NOT TO SCALE



4 BUILDING #19 FACP
NOT TO SCALE



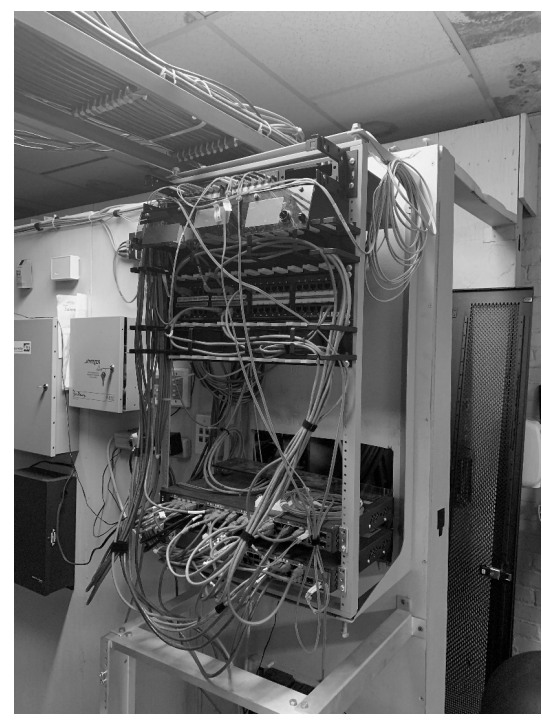
5 B16 SERVER ROOM
NOT TO SCALE



6 SERVER ROOM 214, FIBER A
NOT TO SCALE



7 BUILDING #20 FACP
NOT TO SCALE



8 BLDG2 TO BLDG3 SERVER ROOM FIBER
NOT TO SCALE



9 TELE CLOSET 1B - BUILDING 3
NOT TO SCALE