

A

B

C

D

E

F

A

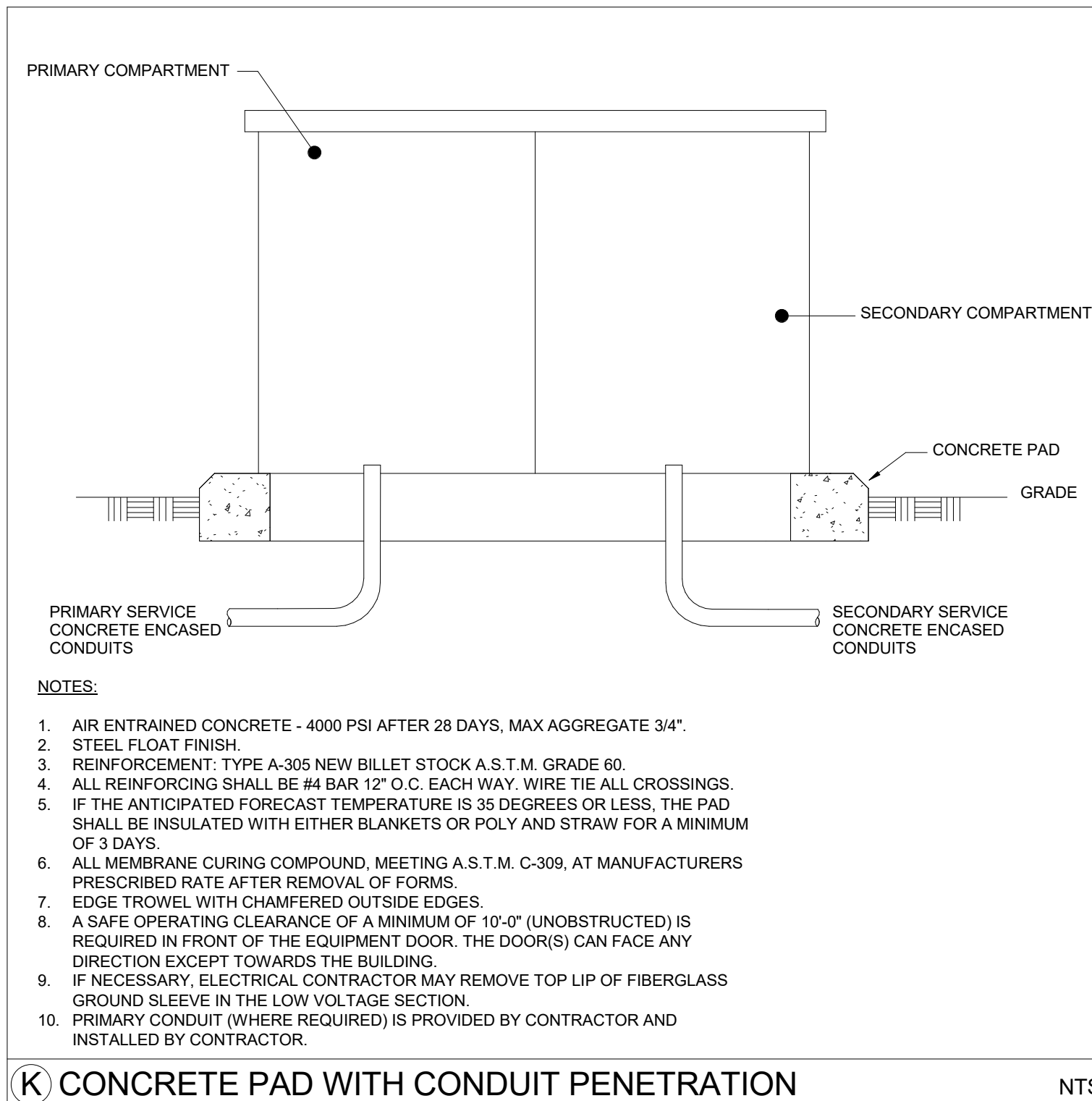
B

C

D

E

F



K CONCRETE PAD WITH CONDUIT PENETRATION

NTS

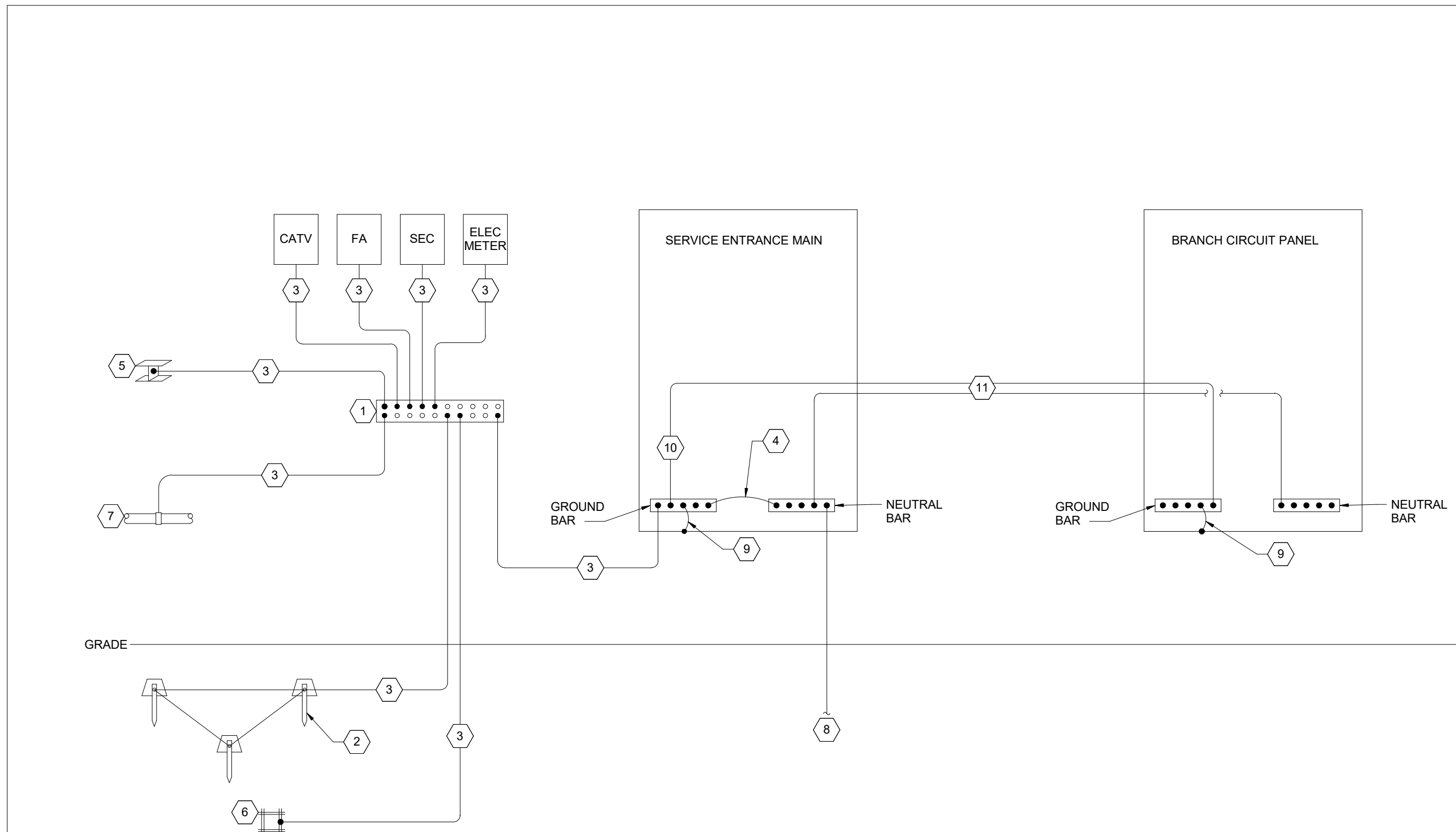
GENERATOR SYSTEM REQUIREMENTS.	
NFPA 110 LEVEL	1
NFPA 110 TYPE	10
NFPA CLASS	96 (HRS)
GENERATOR SET MODEL	350RE02/C
KW @ 150C RISE	250 KW
KVA @ 0.8 PF	438 KVA
PEAK MOTOR STARTING KVA @ 35% MAXIMUM	208/120 VOLTS, 3 PHASE, 60HZ
INSTANTANEOUS VOLTAGE DIP	1314 KVA
ALTERNATOR	4M4019
FREQUENCY REGULATION	40.25%
CONTROLLER MODEL	APM03
MUFFLER	CRITICAL GRADE MUFFLER
ENCLOSURE	LEVEL 2 ACOUSTIC ENCLOSURE
ENGINE HP@ 1800 RPM	401 KW/m
FREQUENCY / SPEED REGULATION	ISOSYNCHROUS
CIRCUIT BREAKER #1 AMPS	1200A
CIRCUIT BREAKER #2 AMPS	N/A
SHUNT TRIP	NO
GFI INDICATION	YES
MANUFACTURER/MODEL TANK	HIGHLAND TANK PETRO HOPPER HT-1032
TANK SIZE (GAL.)	1,000
FUEL TYPE	DIESEL
ATS MODEL ATS-L-LS	KBP-DCVA-0150S
AMPERAGE	150A
VOLTAGE	208 /120 VOLTS, 3 PHASE, 60HZ
NEMA TYPE ENCLOSURE	TYPE 1
SERVICE ENTRANCE RATED	NO
INTEGRAL CIRCUIT BREAKER	NO
ACCESSORIES	(6) PROGRAMMABLE INPUT/OUTPUT
ATS MODEL ATS-L-LEQ	KBP-DCVA-1000S
AMPERAGE	1000A
VOLTAGE	208 /120 VOLTS, 3 PHASE, 60HZ
NEMA TYPE ENCLOSURE	TYPE 1
SERVICE ENTRANCE RATED	NO
INTEGRAL CIRCUIT BREAKER	NO
ACCESSORIES	(6) PROGRAMMABLE INPUT/OUTPUT
ATS MODEL ATS-L-DIP	KBP-DCVA-0400S
AMPERAGE	400A
VOLTAGE	208 /120 VOLTS, 3 PHASE, 60HZ
NEMA TYPE ENCLOSURE	TYPE 1
SERVICE ENTRANCE RATED	NO
INTEGRAL CIRCUIT BREAKER	NO
ACCESSORIES	(6) PROGRAMMABLE INPUT/OUTPUT

\*EQUIPMENT LISTED IS MANUFACTURED BY KOHLER, INC. OF KOHLER, WISCONSIN. FOR THE PURPOSE OF ESTABLISHING A MINIMUM STANDARD. SUBSTITUTIONS BY GENERAC, CUMMINS/ONAN OR CATERPILLAR AND ALL EQUIPMENT FURNISHED SHALL BE EQUAL IN EVERY RESPECT TO KOHLER, INCLUDING QUALITY, SPECIFICATIONS, OPERATION, AND FUNCTION TO BE CONSIDERED. THE EQUIPMENT SPACING, ELECTRICAL WIRING, EQUIPMENT MECHANICAL, FUEL AND EXHAUST COMPONENTS, HAVE ALL BEEN SIZED AND DESIGNED AROUND KOHLER EQUIPMENT. THE CONTRACTOR SHALL BE RESPONSIBLE FOR ANY CHANGE IN BUILDING WORK MADE NECESSARY FOR THE PROPER INSTALLATION AND OPERATION OF ANY EQUIPMENT OTHER THAN KOHLER WITH OUT ADDITIONAL COST TO THE VA.

NOTE: CONTRACTOR TO OBTAIN ALL REQUIRED PERMITTING AND REGISTRATION FOR GENERATOR AND FUEL TANK AS REQUIRED BY THE LOCAL, STATE, AND GOVERNMENT AGENCIES (NYSDEC, USEPA).

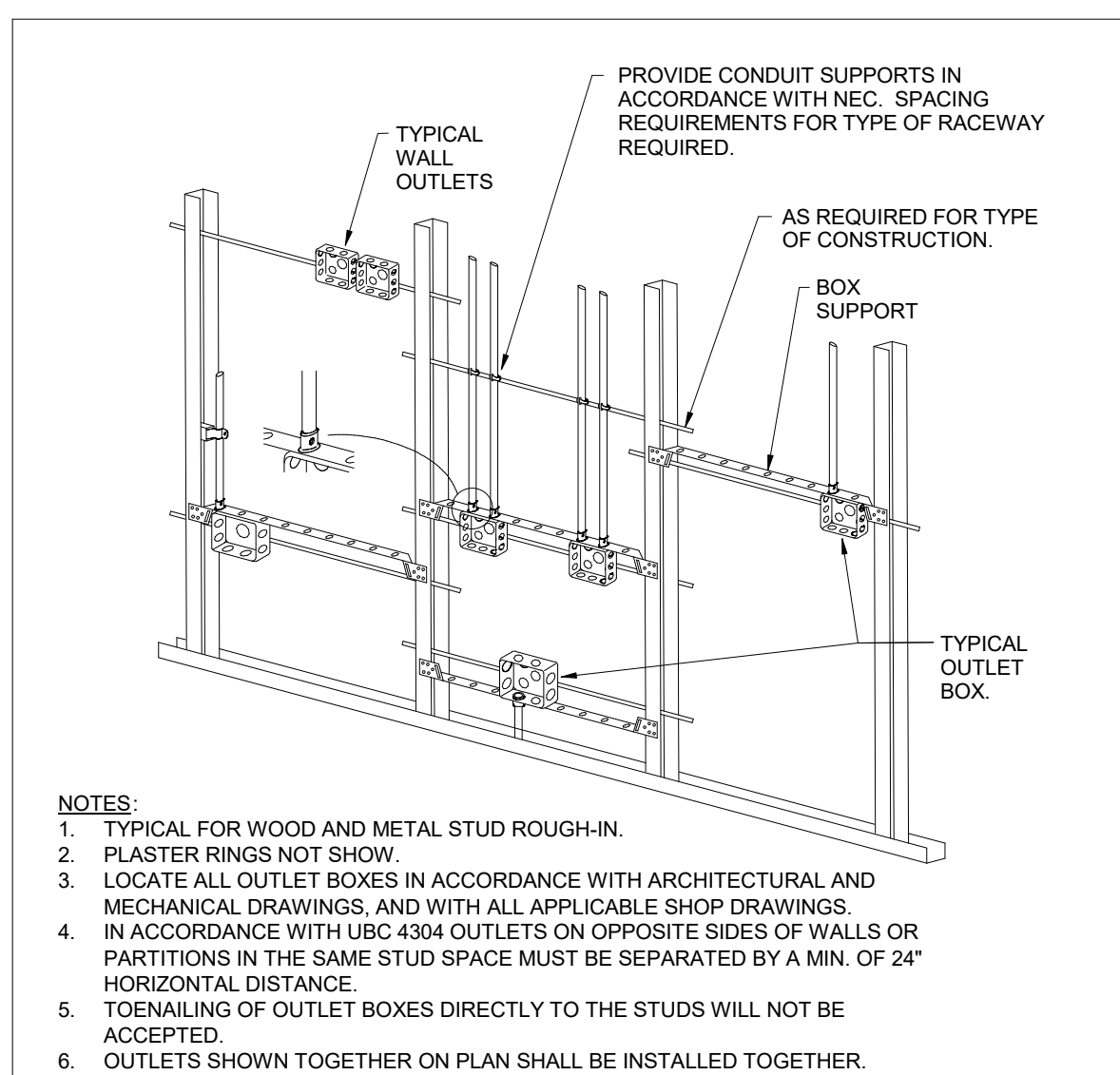
H GENERATOR SYSTEM REQUIREMENTS

NTS



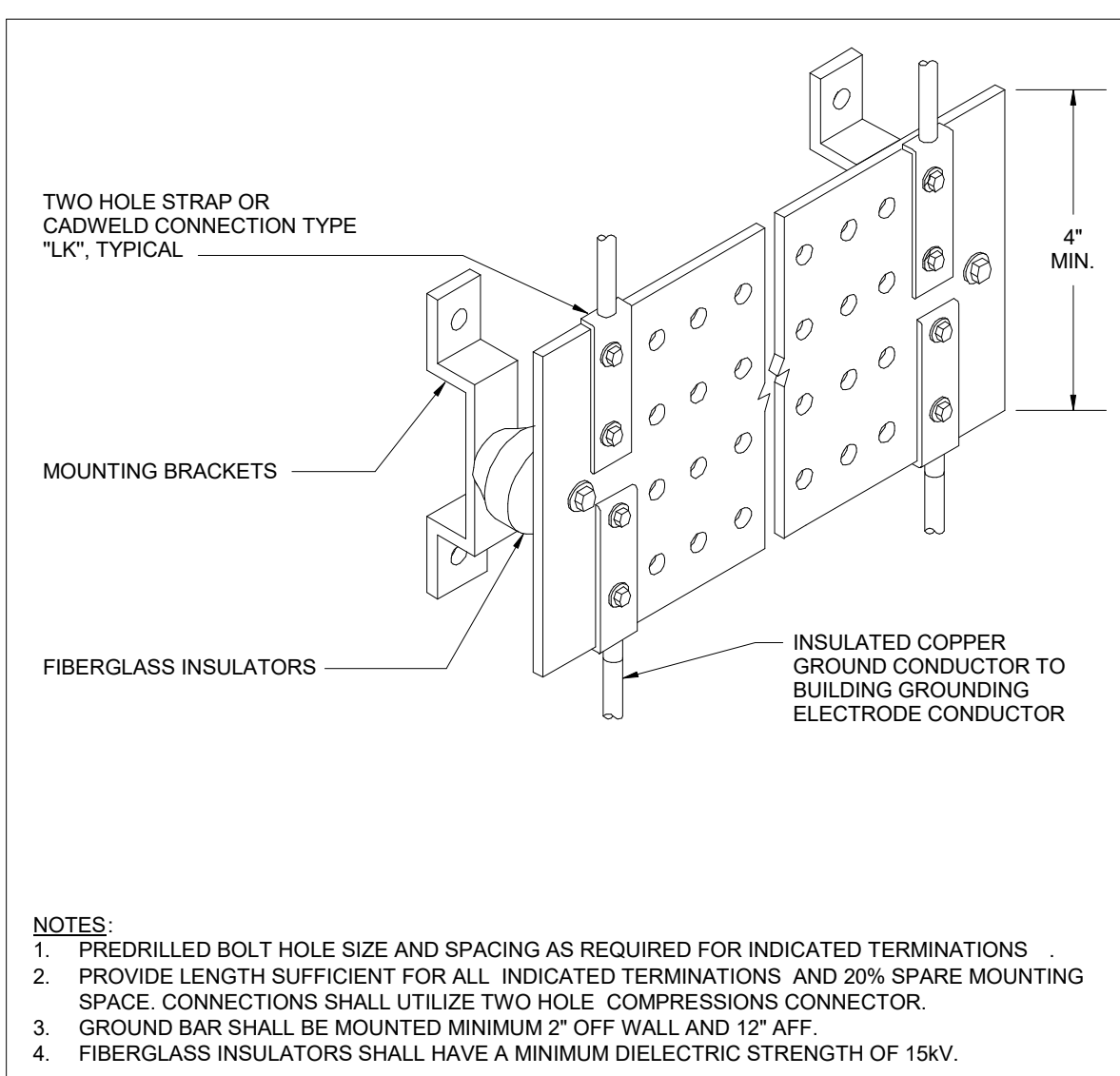
A GROUNDING DETAIL

N.T.S.



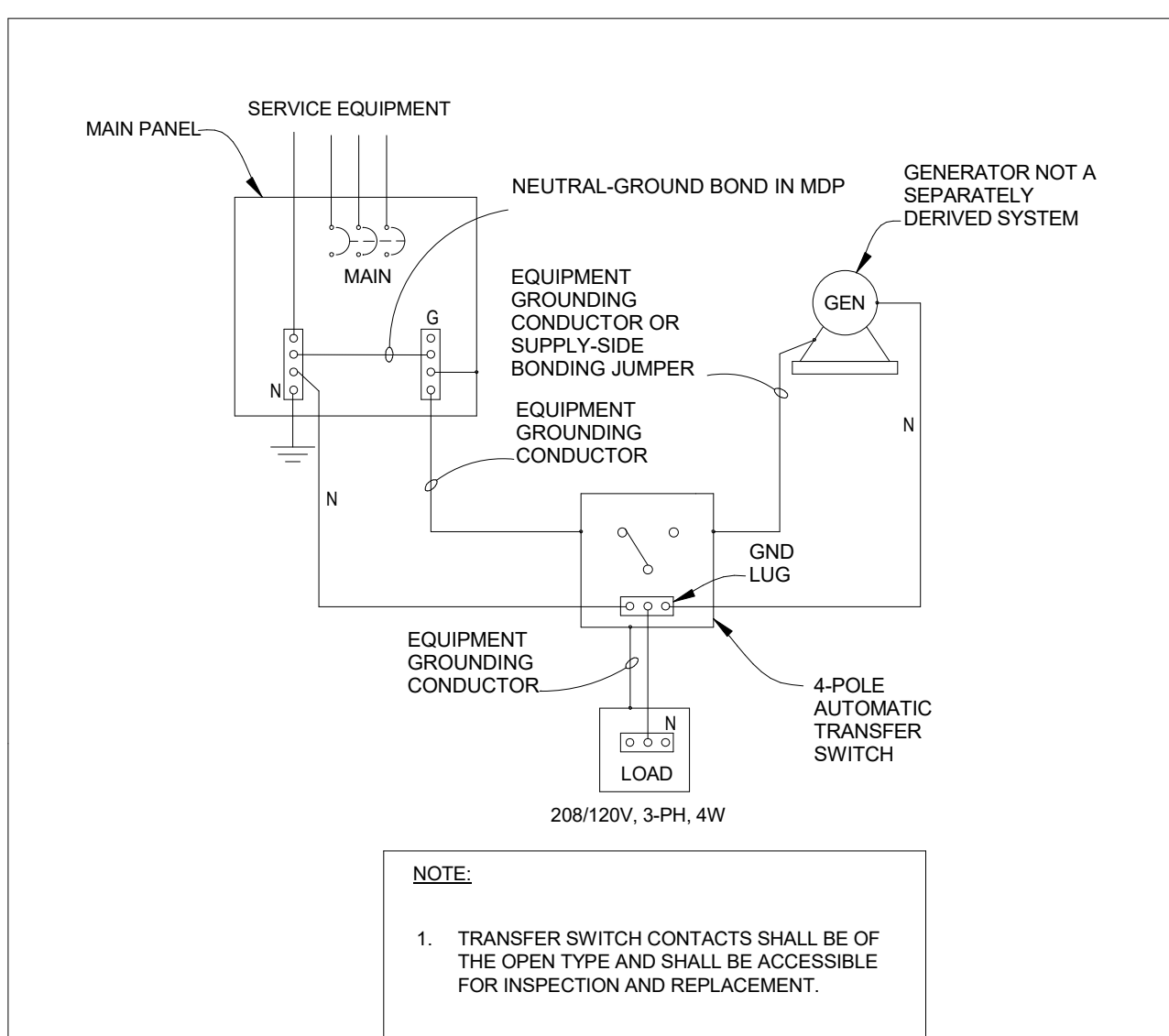
D TYPICAL ROUGH-IN

NTS



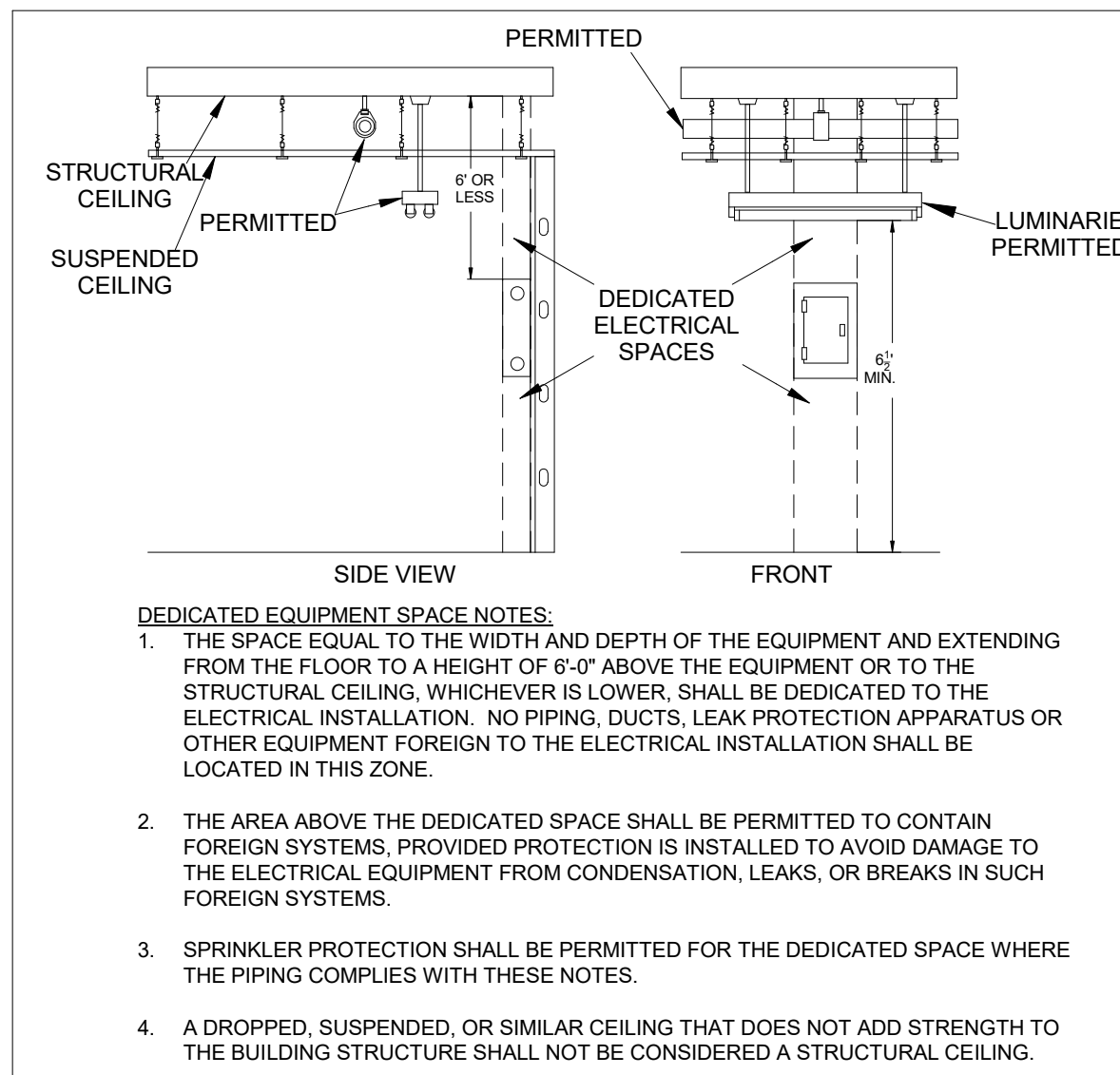
C GROUND BUS DETAIL

NTS



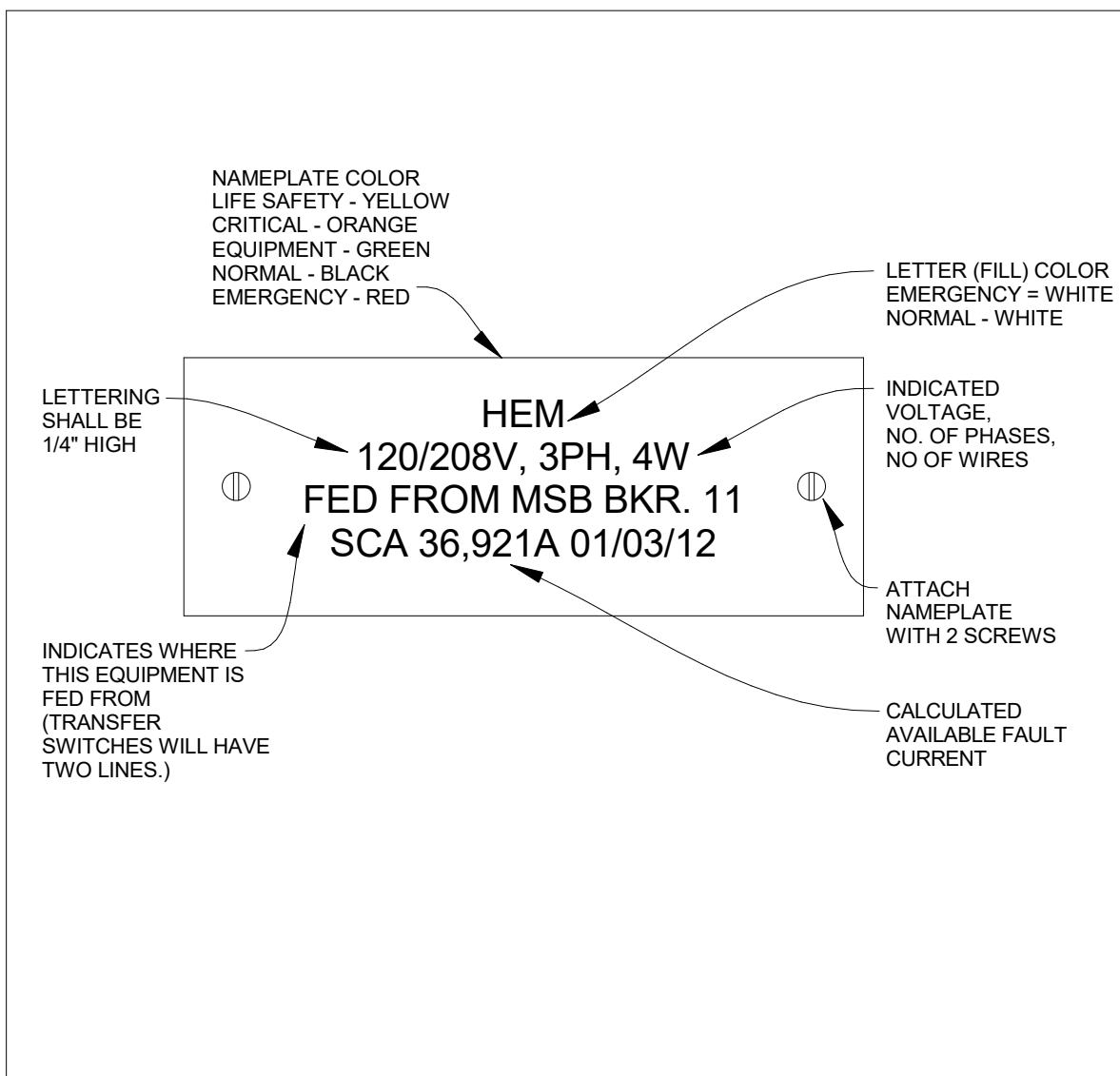
B GENERATOR GROUNDING AND NEUTRAL DETAIL

N.T.S.



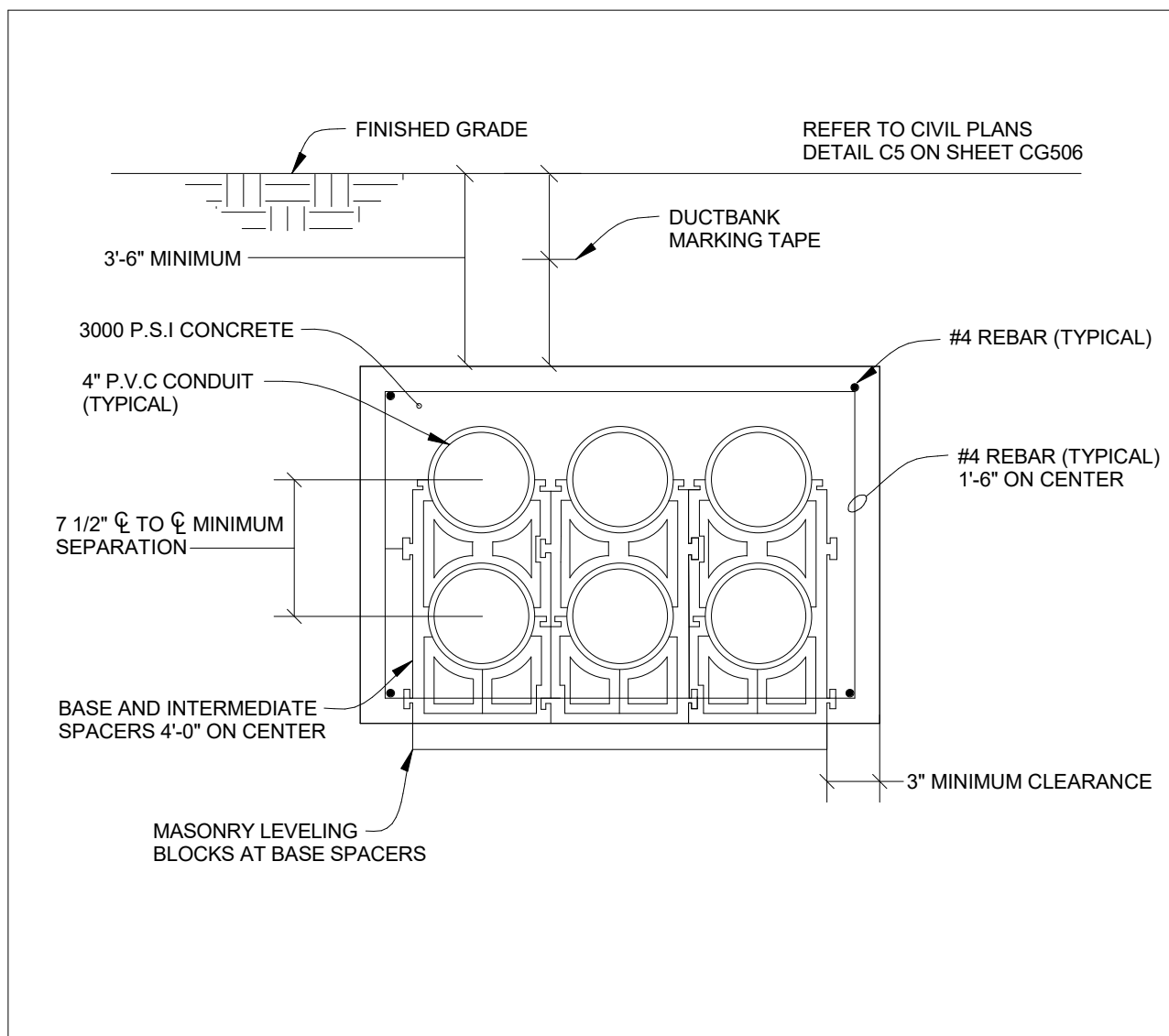
G DEDICATED ELECTRICAL SPACES

NTS



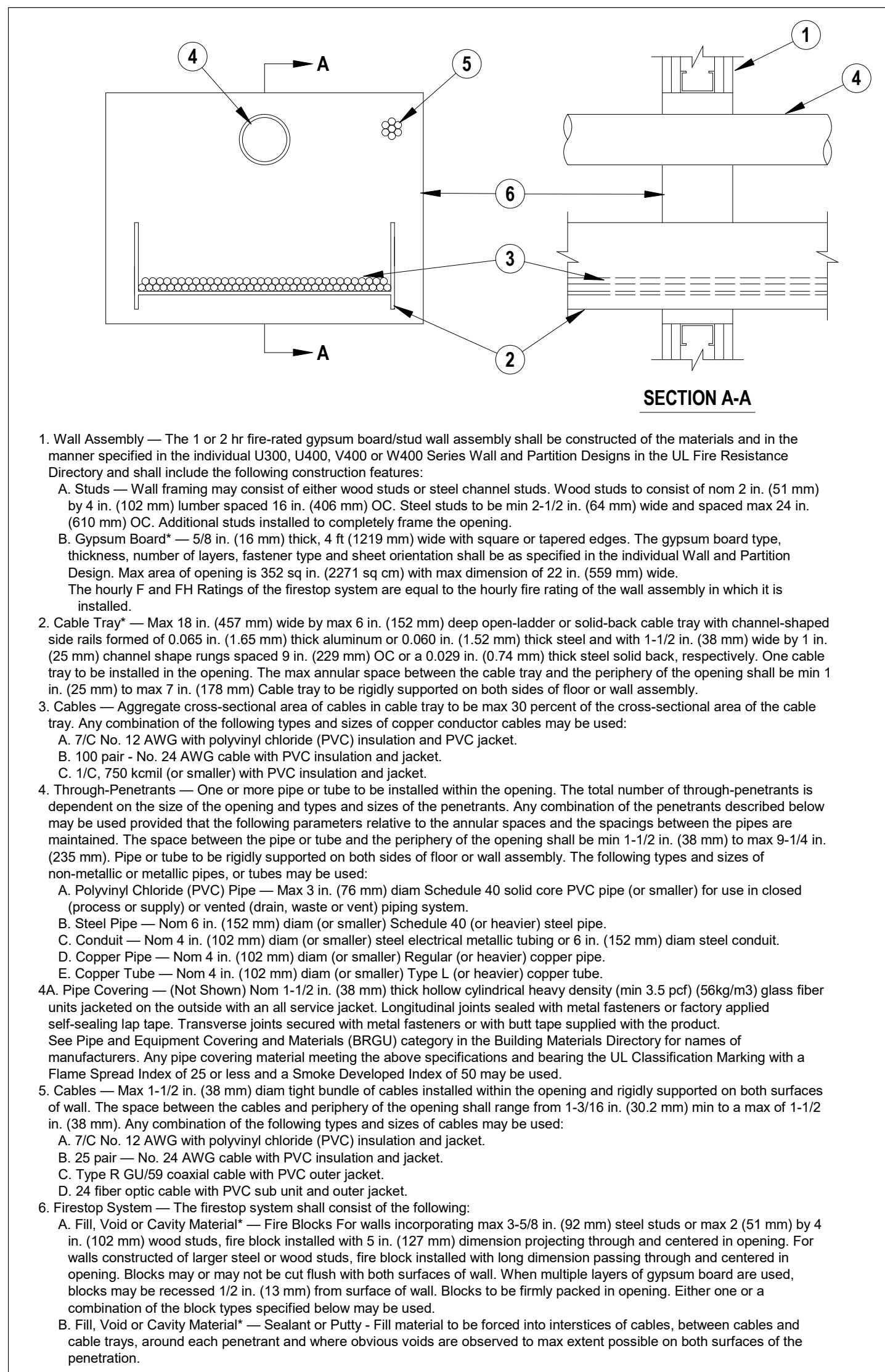
F ELECTRICAL EQUIPMENT NAMEPLATE

NTS



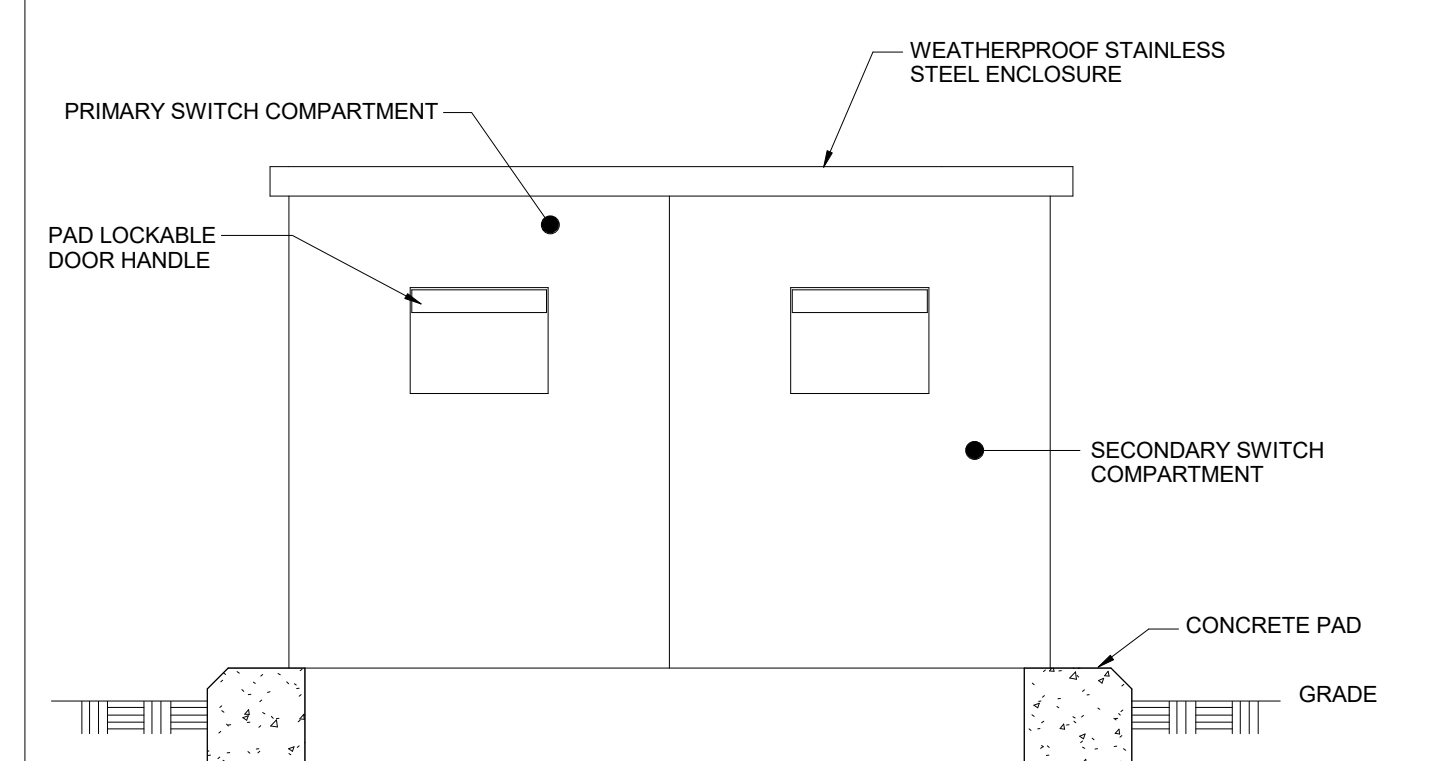
E 6-WAY DUCTBANK 4" CONDUIT DETAIL

NTS



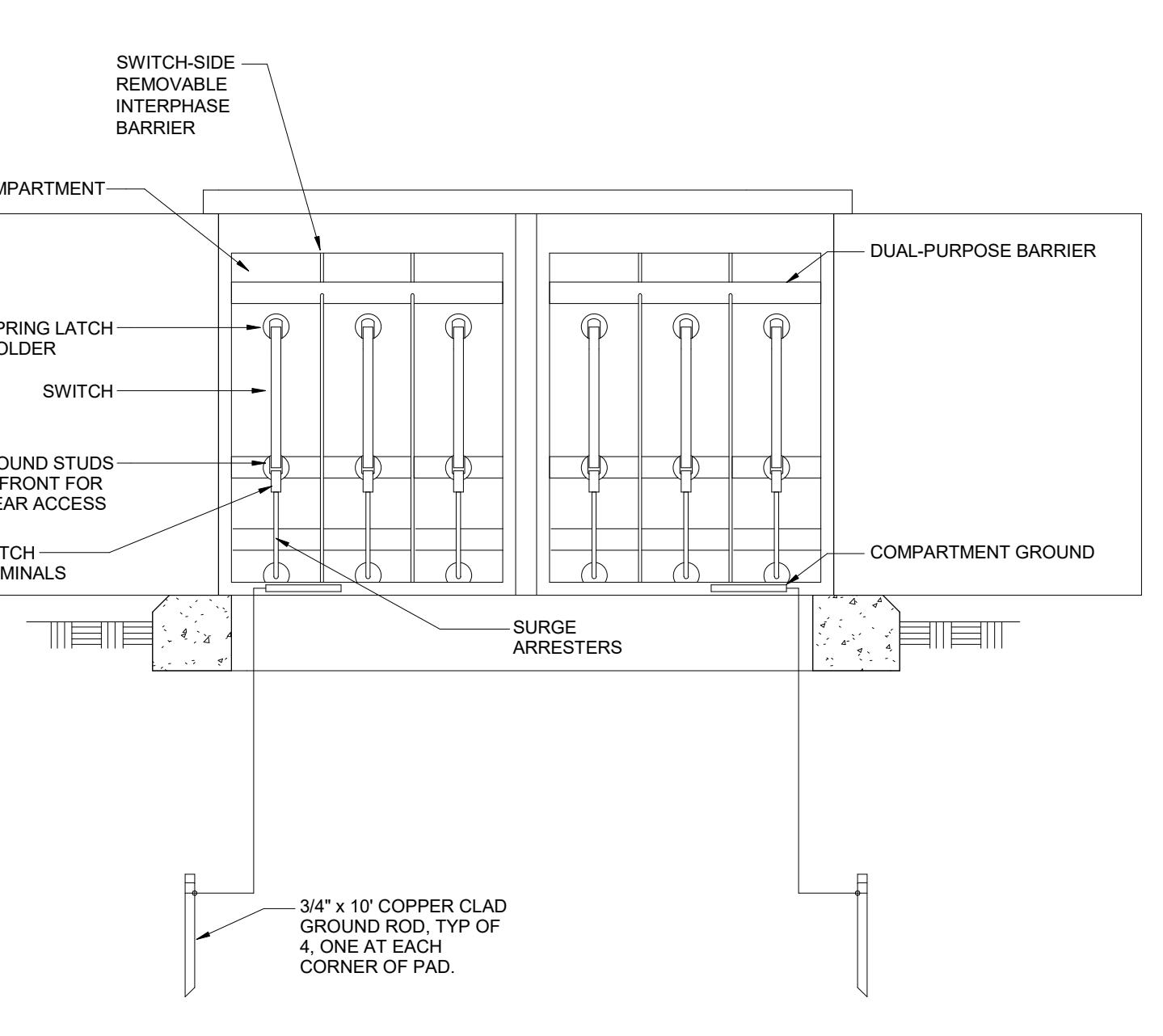
L PENETRATIONS THROUGH RATED WALLS

NTS



I SECTIONAL SWITCHGEAR BLOCK ENCLOSURE (EXTERIOR)

NTS



J SECTIONAL SWITCHGEAR BLOCK ENCLOSURE (INTERIOR)

NTS

CONSULTANT

**NORRIS DESIGN**  
Norris Design Architects  
416 North Toole Avenue  
Tucson, AZ 85701  
(520) 622-9565  
Josh Orth, P.L.A.

**HINMAN**  
Protective Design Specialist  
240 West 5th St, Suite 1004  
New York, NY 10001  
(212) 967-4890  
Corinne Tan, SE

**C.S. Davidson, Inc.**  
Landscape Architect  
515 West James Street, Suite 102  
Lancaster, PA 17603  
(717) 481-2991  
Jason Vannoy, SE, PE

**MES GROUP**  
MEP  
550 North Reo Street, Suite 203  
Tampa, FL 33602  
(813) 289-4700  
Nicholas Stephenson, PE

ARCHITECT/ENGINEER OF RECORD

**TRIPLE C - THE A&F GROUP**  
201 E. Jefferson Street, Suite 200  
Syracuse, NY 13202  
(315) 484-5958  
Mat Perkins

STAMP

STATE OF NEW YORK  
NICHOLAS STEPHENSON  
LICENSED PROFESSIONAL ENGINEER  
05/09/2022

Office of Construction and Facilities Management

U.S. Department of Veterans Affairs

Drawing Title

ELECTRICAL DETAILS

Approved:

Phase

ISSUED FOR CONSTRUCTION

FULLY SPRINKLERED

Project Title

NEW COMMUNITY LIVING CENTER

Location  
2094 Albany Post Road, Montrose, NY 10548

Issue Date  
05/09/2022

Checked  
DK

Drawn  
SC

Project Number

620-334

Building Number  
CLC

Drawing Number  
E-501