

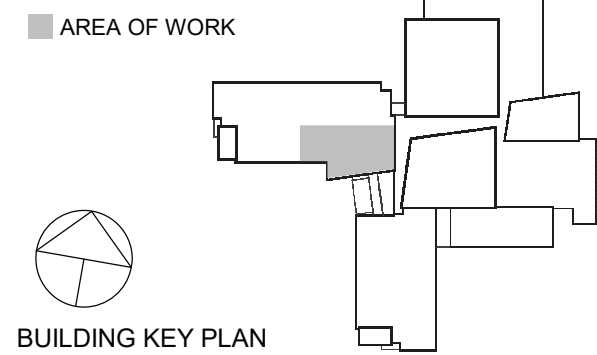
CHESTER ACADEMY  
STEM LAB  
ALTERATIONS  
CHESTER UNION FREE  
SCHOOL DISTRICT

64 HAMBLETONIAN AVENUE  
CHESTER, NY 10918

**KG+D** listen  
imagine  
build  
**KG+D . ARCHITECTS PC**  
285 MAIN STREET MOUNT KISCO . NEW YORK . 10549  
P:914.666.5900 KGDARCHITECTS.COM

NY SED PROJECT CONTROL NO.  
44-02-01-02-0-009-006

CONSTRUCTION  
DOCUMENTS



NOTE: ALL IDEAS, DESIGNS, ARRANGEMENTS AND PLANS INDICATED OR REPRESENTED BY THIS DRAWING ARE OWNED BY AND ARE THE PROPERTY OF KAEVER, GARMENT & DAVIDSON ARCHITECTS, PC (KGAD), AND WERE CREATED FOR USE ON THIS PROJECT. NONE OF SUCH IDEAS, DESIGNS, ARRANGEMENTS OR PLANS SHALL BE USED BY OR DISCLOSED TO ANY PURPOSE WHATSOEVER WITHOUT THE WRITTEN PERMISSION OF KGAD.

WRITTEN DIMENSIONS ON THIS DRAWING SHALL HAVE PRECEDENCE OVER SCALED DIMENSIONS. CONTRACTOR SHALL VERIFY ALL ACTUAL DIMENSIONS AND CONDITIONS ON THE JOB AND THE ARCHITECT MUST BE NOTIFIED OF ANY VARIATIONS FROM DIMENSIONS AND CONDITIONS SHOWN. SHOP DETAILS MUST BE SUBMITTED TO THIS OFFICE FOR APPROVAL, BEFORE PROCEEDING WITH FABRICATION.

ALTERATIONS BY ANY PERSON, IN ANY WAY, OF ANY ITEM CONTAINED ON THIS DOCUMENT, UNLESS ACTING UNDER THE DIRECTION OF THE LICENSED ARCHITECT WHOSE PROFESSIONAL SEAL IS AFFIXED HERETO, IS A VIOLATION OF TITLE VLS, SECT. 160.5 (b) OF NEW YORK STATE LAW. COPYRIGHT KAEVER, GARMENT & DAVIDSON ARCHITECTS & ENGINEERS, PC. ALL RIGHTS RESERVED.

Professional Seal

4	11/16/2022	BID ADDENDUM #1
3	11/02/2022	ISSUE FOR BID
1	05/25/2022	NYSED - CONST. DOCS.
No.	Date	Issue

Sheet Title

AREA OF WORK  
REFLECTED  
CEILING PLAN

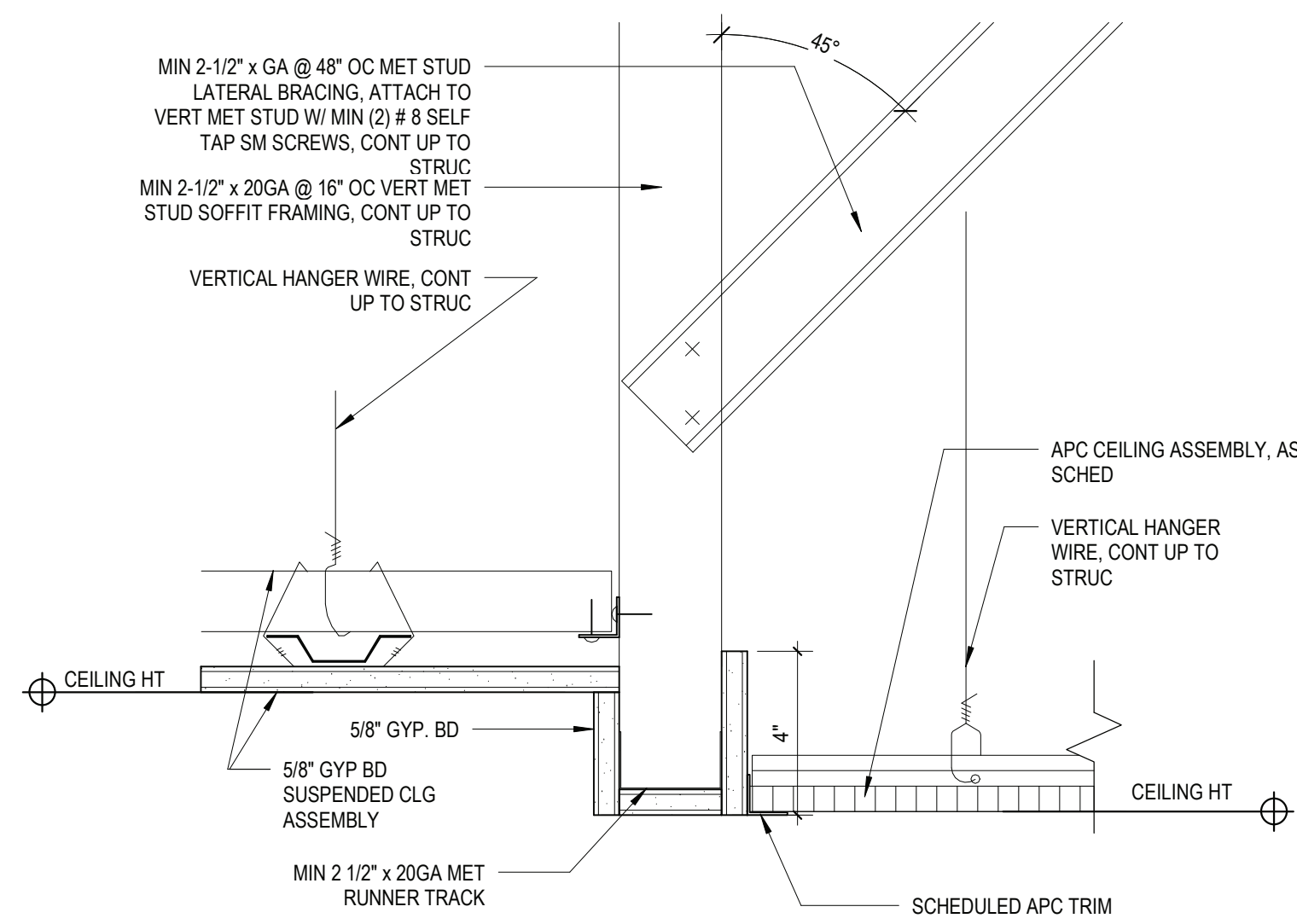
Job No.	2021-1080	Date	11/16/2022
Scale	AS NOTED	Drawn / Checked	KG+D

Sheet Number

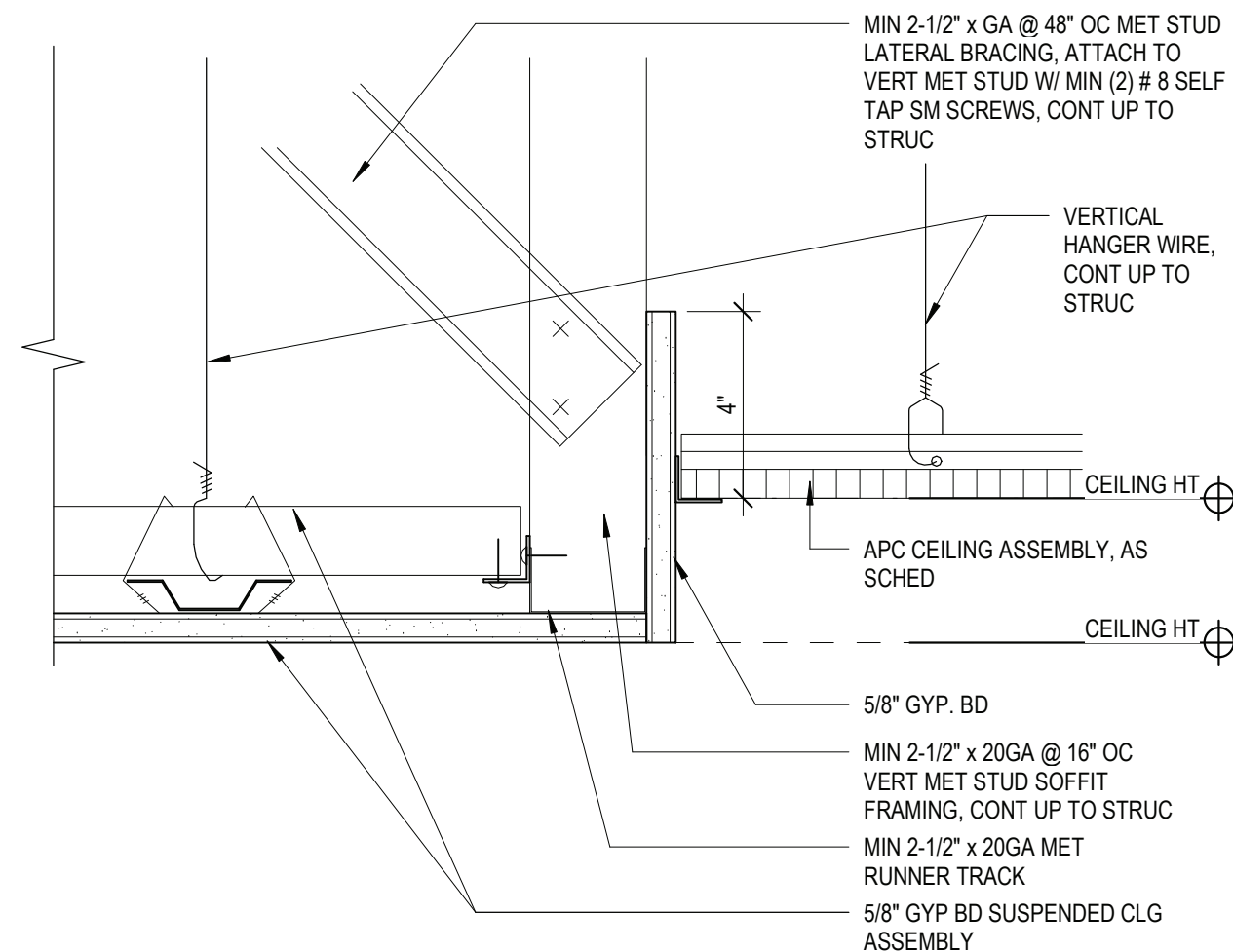
A601

CEILING NOTES

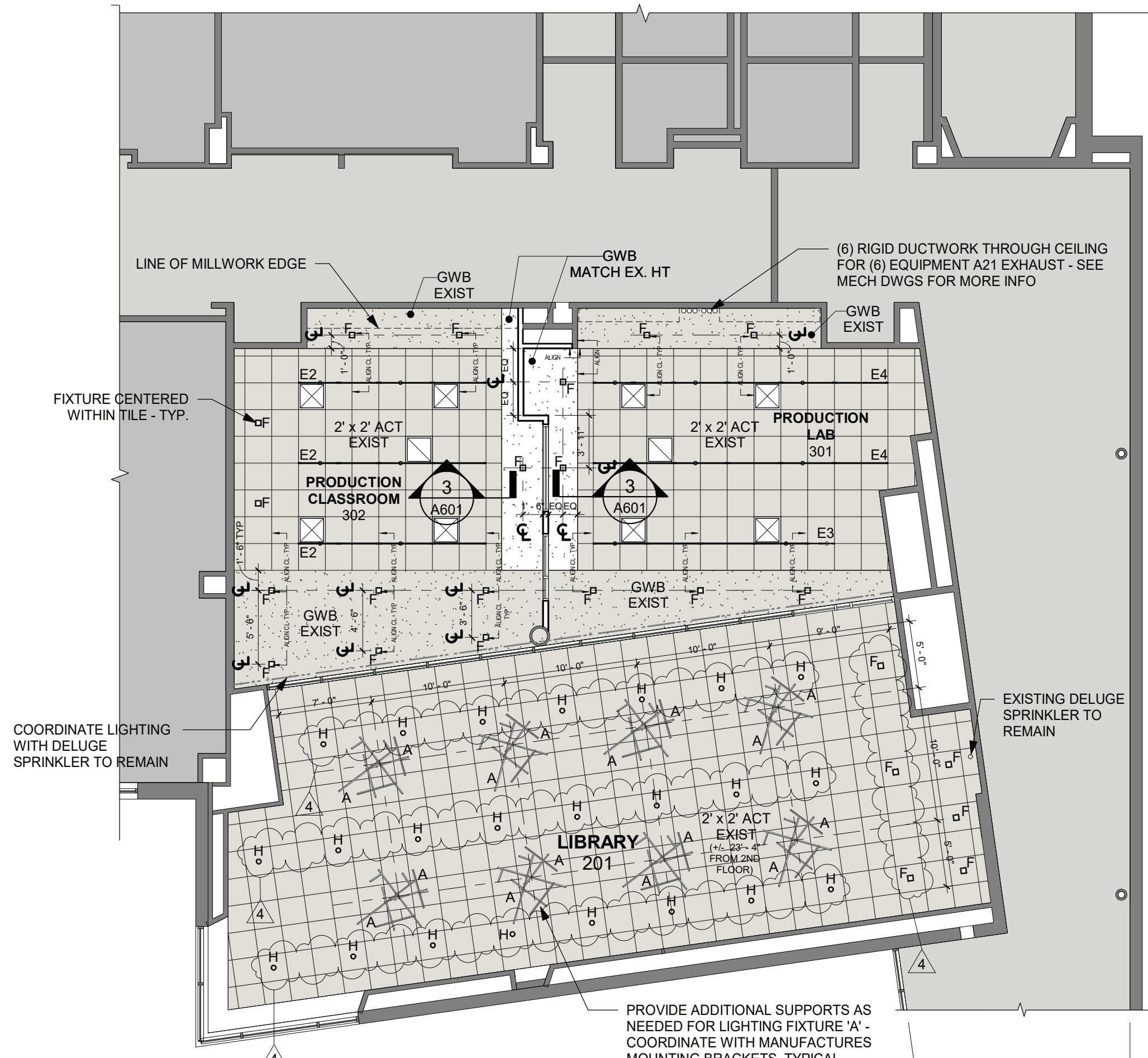
- 1 ■ DENOTES AREA OF NO ARCHITECTURAL WORK, U.O.N. - SEE M.E.P. DWGS.
- 2 CEILING GRIDS ARE TO BE CENTERED IN ROOM. ALL CEILING FIXTURES, INCLUDING SMOKE DETECTORS, HVAC REGISTERS, ETC. ARE TO BE CENTERED IN CEILING TILES.
- 3 SEE ELECTRICAL DRAWINGS FOR LIGHTING FIXTURE SCHEDULE
- 4 SEE DWG. A501 FOR FINISH SCHEDULE
- 5 CEILING HEIGHTS SHOWN IN RCPs, SECTIONS, & DETAILS SHALL TAKE PRECEDENCE OVER HEIGHTS INDICATED ON SCHEDULES
- 6 ■ DENOTES NEW CEILING SYSTEMS
- 7 ■ DENOTES EXISTING CEILING SYSTEMS - ENTIRE ACT CEILING SYSTEM TO BE STORED DURING CONSTRUCTION & REINSTALLED UPON COMPLETION OF MEP WORK
- 8 ■ ALIGN CEILING EDGE WITH FINISH FACE OF ADJACENT WALL
- 9 ■ DENOTES SUPPLY REGISTERS - SEE MEP DWGS
- 10 ■ DENOTES RETURN REGISTERS - SEE MEP DWGS
- 11 ALL PENDANT LIGHTS TO BE MOUNTED 12in FROM THE CEILING TO BOTTOM OF FIXTURE, U.O.N. COORDINATE ALL FINAL MOUNTING HEIGHTS WITH ARCHITECT BEFORE INSTALLATION.



4 CEILING DETAIL AT SOFFIT  
3" = 1'-0"

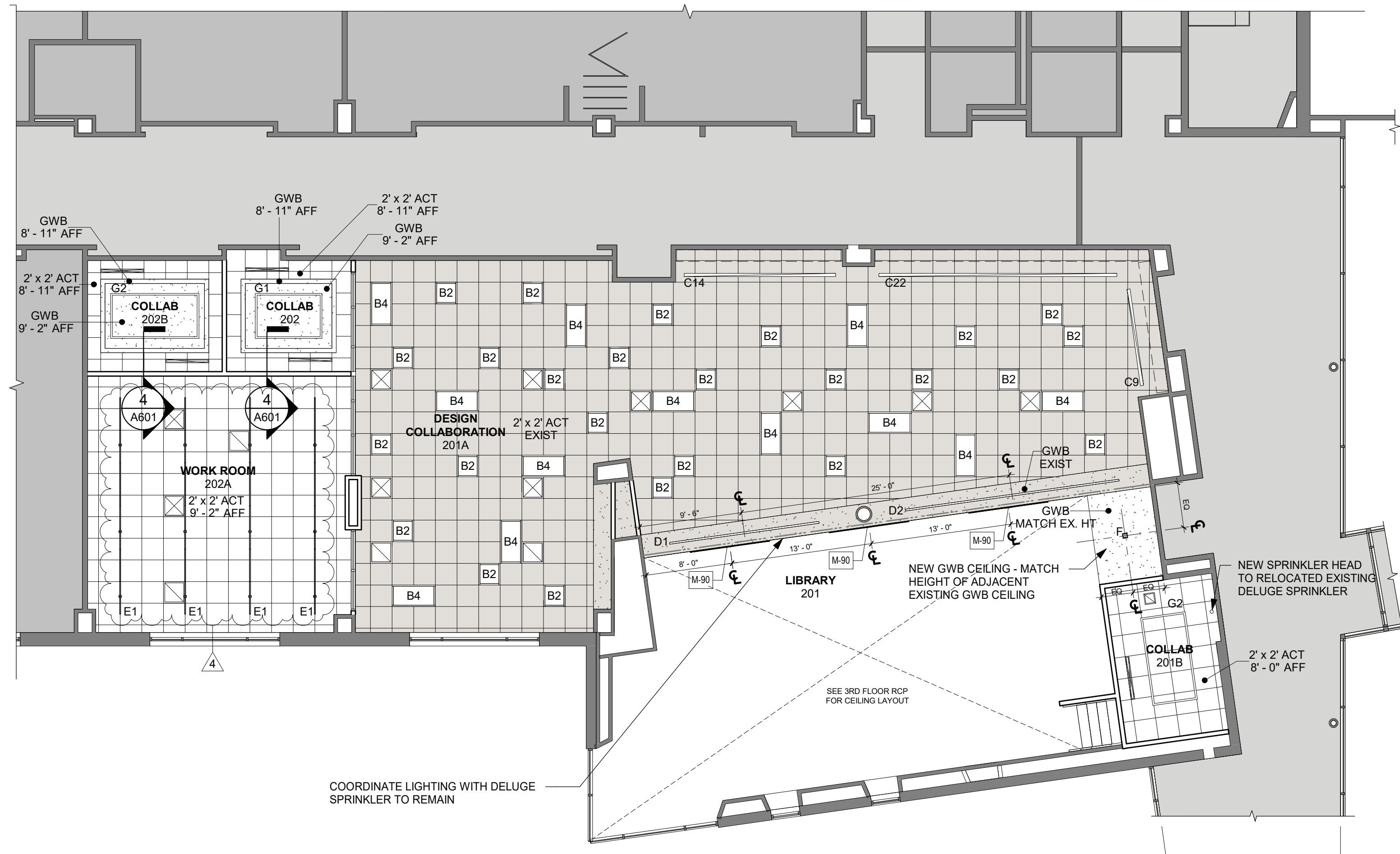


3 CEILING DETAIL AT PERIMETER  
3" = 1'-0"



2 3RD FLOOR RCP  
1/8" = 1'-0"

GENERAL NOTE:  
-TYPE A FIXTURES TO BE MOUNTED +/- 17'-0" FROM THE 2ND FLOOR  
-TYPE H FIXTURES TO BE MOUNTED +/- 16'-6" FROM THE 2ND FLOOR



1 2ND FLOOR RCP  
1/8" = 1'-0"