

**ALL-GENDER
RESTROOM**

Diagram illustrating the required clearances and fixtures for a standard ADA-compliant toilet stall. The overall dimensions are 12'-11 3/4" wide by 5'-0" high.

Key components and clearances shown:

- 18" X 36" MIRROR
- SOAP DISPENSER
- ELECTRIC HAND DRYER
- FRP - SEE FINISH NOTES SHEET A4
- 42" GRAB BAR (PROVIDE BLOCKING IN WALL AS REQ'D)
- 18" VERTICAL MOUNTED GRAB BAR (PROVIDE BLOCKING IN WALL AS REQ'D)
- TWO ROLL TOILET PAPER DISPENSER (TYP OF 2 PER WATER CLOSET). PROVIDE BLOCKING IN WALL AS REQ'D.
- VINYL BASE
- WRAP PIPES AS REQUIRED BY ADA.

Diagram illustrating the components and dimensions of a standard toilet stall:

- FRP - SEE FINISH NOTES SHEET A4.
- 18" X36" MIRROR
- 18" VERTICAL MOUNTED GRAB BAR (PROVIDE BLOCKING IN WALL AS REQ'D)
- 42" GRAB BAR (PROVIDE BLOCKING IN WALL AS REQ'D)
- TWO ROLL TOILET PAPER DISPENSER, (TYP OF 2 PER WATER CLOSET), PROVIDE BLOCKING IN WALL AS REQ'D.
- VINYL BASE

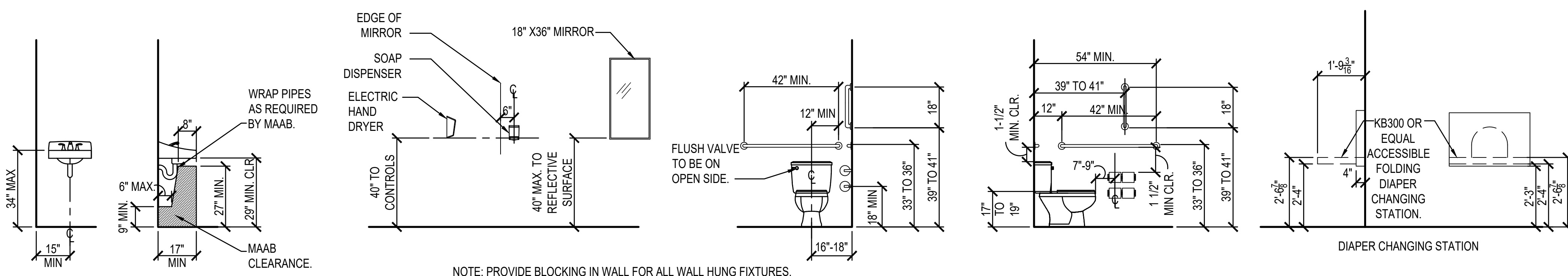
NOTE:

TOILET ACCESSORIES ARE TENANT SUPPLIED - INCLUDING GRAB BARS, TOILET PAPER DISPENSER, HAIR DRYER, HAND DRYER, AND SLATWALL.

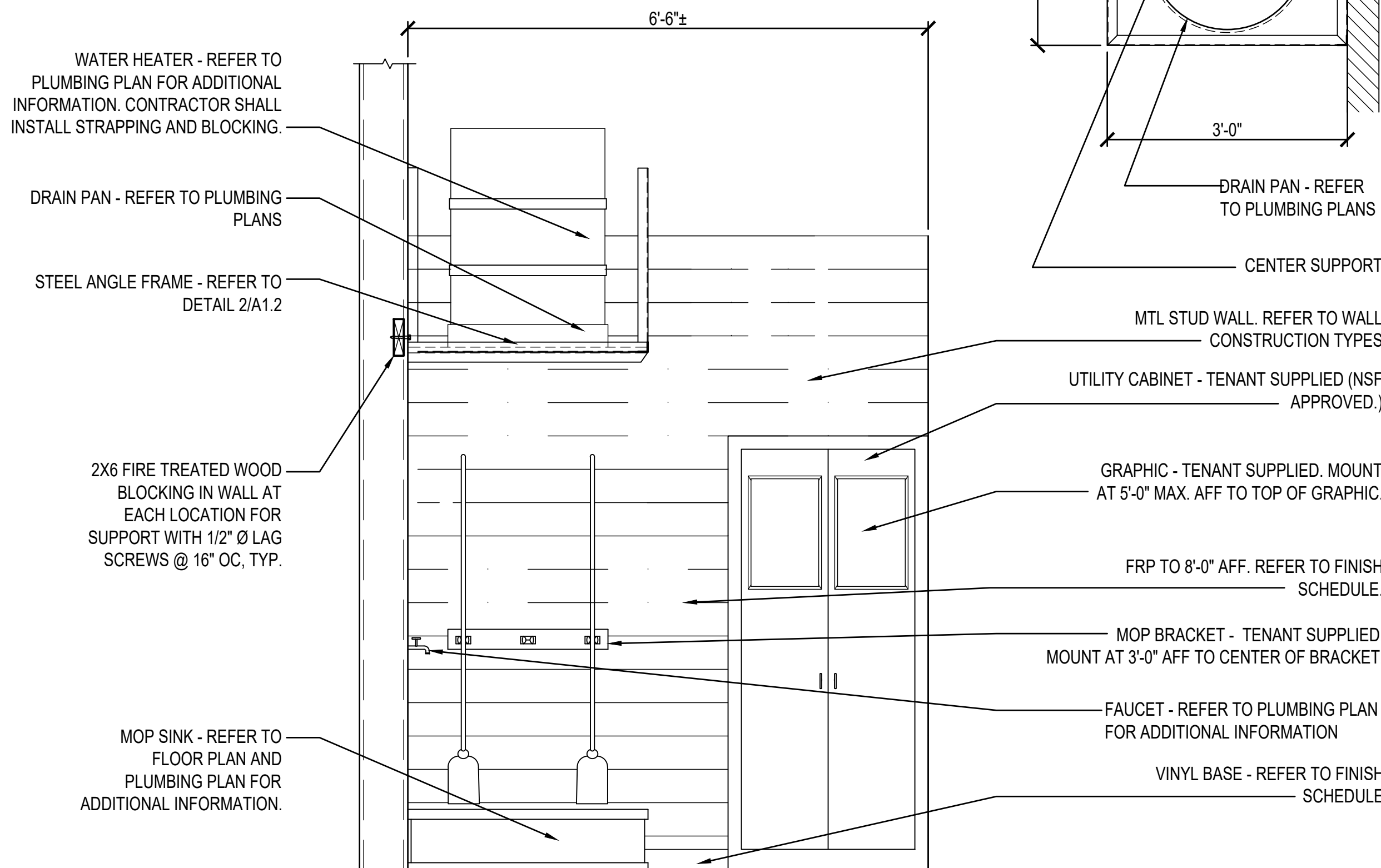
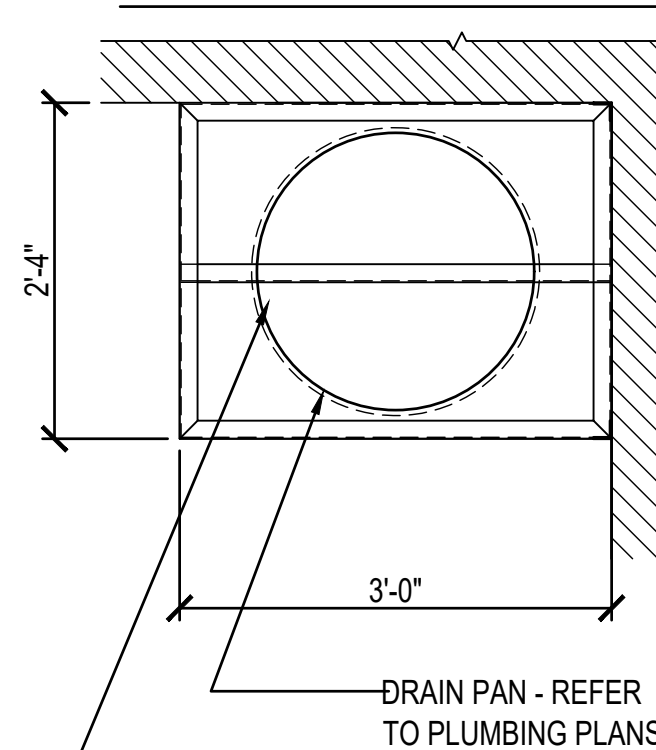
THE ELECTRIC HAND DRYER WILL NOT EXTEND MORE THAN 4" FROM THE WALL ON WHICH IT IS MOUNTED UNLESS IT HAS A LEADING EDGE AT OR BELOW 27" ABOVE FINISHED FLOOR.

FLUSH CONTROLS SHALL BE LOCATED ON THE OPEN SIDE OF THE WATER CLOSET.

CONTRACTOR SHALL FIELD VERIFY ALL EXIST PLUMBING FIXTURES AND EXIST ACCESSORIES (INCLUDING LANDLORD INSTALLED PLUMBING FIXTURES AND ACCESSORIES) COMPLY WITH PLANS AND HARRICORD CODES AND LAWS. CONTRACTOR SHALL VERIFY COMPLIANCE TO FLUSH PLAN, ENLARGED PLANS AND ELEVATIONS THIS SET. NOTIFY CONSTRUCTION PM WITH ANY DISCREPANCIES.



PLAN VIEW OF WATER HEATER BRACKET



FASTEN WATER HEATER TO WALL WITH TWO 1 1/2" GALVANIZED STRAPS POSITIONED 1/3 DOWN FROM TOP AND 1/3 UP FROM BOTTOM OF WATER HEATER. ATTACH TO BLOCKING WITH 1 1/4" Ø X 1 1/2" WOOD SCREWS.

2X6 FIRE TREATED WOOD BLOCKING IN WALL WITH A34 FRAMING ANGLE TO STUD EACH SIDE AT EACH LOCATION (TYP.).

DRAIN PAN. SET ON 28" x 36" x 3/4" FIRE TREATED PLYWOOD PLATFORM. REFER TO PLUMBING PLAN FOR ADDITIONAL INFORMATION.

1 1/2" x 1 1/2" x 1/8" STEEL ANGLE FRAME OF ALL WELDED CONSTRUCTION. PRIME AND PAINT SAFETY YELLOW. SECURE TO WALL W/ 1/2" Ø LAG SCREWS AT EACH SUPPORT.

FRP TO 8'-0" AFF. REFER TO FINISH SCHEDULE AND MOP SINK ELEVATION.

REFER TO WALL CONSTRUCTION TYPES. IF WALL IS EXISTING CONSTRUCTION AND DOES NOT MEET OR EXCEED THESE REQUIREMENTS, NOTIFY THE PROFESSIONAL OF RECORD IMMEDIATELY.

MOP SINK - REFER TO FLOOR PLAN AND PLUMBING PLAN FOR ADDITIONAL INFORMATION.

7'-0"

2'-4"

10"

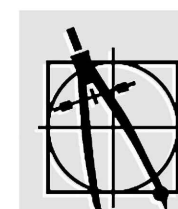
10"

2'-0"

10"

ALL PLANS, SPECIFICATIONS AND REPORTS TO WHICH THE SEAL OF AN ARCHITECT HAS BEEN APPLIED, THERE SHALL ALSO BE APPLIED A STAMP WITH APPROPRIATE WORDING WARNING THAT IT IS A VIOLATION OF THE LAW FOR ANY PERSON, UNLESS ACTING UNDER THE DIRECTION OF A LICENSED ARCHITECT, TO ALTER AN ITEM IN ANY WAY. IF AN ITEM BEARING THE SEAL OF AN ARCHITECT IS ALTERED, THE ALTERING ARCHITECT SHALL AFFIX TO HIS ITEM THE SEAL AND THE NOTATION "ALTERED" FOLLOWED BY HIS SIGNATURE AND THE DATE OF SUCH

date	06-15-2022	
project	202227 / 03216	
designed	RLO	
drawn	PUG	
checked	JWO	
	mark	date
	revisions	
	by	description



Dean Associates
Architects Incorporated
Architecture & Interior Design
7 Kimball Lane Suite E6
Lynnfield MA 01940
p: 781.397.8092 f: 781.397.8094
www.deanassoc.com

DOLLAR TREE
166 S. LIBERTY DRIVE - DEAL #13216 / STORE #2573
STONY POINT, NY 10980
ENLARGED PLANS, DETAILS, SECTIONS AND ELEVATIONS

project	drawing
sheet	

A1.2