

FIELD VERIFY ALL CONDITIONS

DESIGN DRAWINGS ARE SCHEMATIC. THIS CONTRACT SHALL INCLUDE ALL LABOR AND MATERIALS NECESSARY FOR FIELD MODIFICATIONS DUE TO EXISTING CONDITIONS.

THE CONTRACTOR SHALL CONTACT THE ARCHITECT, ENGINEER OR OWNER PRIOR TO BIDDING FOR INTERPRETATIONS AND CLARIFICATIONS OF THE DESIGN AND INCLUDE IN HIS BID ALL COSTS TO MEET THE DESIGN INTENT. CLARIFICATIONS MADE BY THE ARCHITECT, ENGINEER OR OWNER AFTER BIDDING WILL BE FINAL AND SHALL BE IMPLEMENTED AT CONTRACTORS COST.

BIDDING CONTRACTORS SHALL HAVE A WORKING KNOWLEDGE OF LOCAL CODES AND ORDINANCES AND SHALL INCLUDE IN THEIR BIDS THE COSTS FOR ALL WORK INSTALLED IN STRICT ACCORDANCE WITH GOVERNING CODES, THE PLANS AND SPECIFICATIONS NOT WITHSTANDING. THE CONTRACTOR SHALL ALERT ARCHITECT, ENGINEER OR OWNER OF ANY APPARENT DISCREPANCIES BETWEEN GOVERNING CODES AND DESIGN INTENT.

GENERAL DUCTWORK NOTE

CONTRACTOR SHALL SITE VERIFY EXISTING HVAC UNIT LOCATION(S) & POTENTIAL DUCTWORK OBSTRUCTIONS (SPRINKLER LINES, STRUCTURAL BEAMS & JOIST, ETC.) PRIOR TO FABRICATING DUCTWORK. CONTRACTOR SHALL CONTACT THE DTD CONSTRUCTION PROJECT MANAGER IF CONFLICTS BETWEEN CONSTRUCTION DOCUMENTS & EXISTING CONDITION EXIST FOR DIRECTION.

GENERAL DEMOLITION NOTE

MECHANICAL CONTRACTOR TO REMOVE EXISTING HVAC EQUIPMENT, DUCTWORK, HANGERS, INSULATION, AIR DEVICES, CONTROLS AND MISCELLANEOUS EQUIPMENT, ETC... NOT INTENDED FOR REUSE

HVAC CONTROLS NOTE

CONTRACTOR SHALL REFER TO THE EM SHEETS FOR INSTALLATION INSTRUCTIONS FOR THE VENDOR FURNISHED. CONTRACTOR INSTALLED HVAC CONTROL SYSTEM AND TEMPERATURE AND CO2 SENSOR LOCATIONS PRIOR TO THE INSTALLATION OF ALL RELATED ITEMS

KEYED NOTES

- M02 TENANTS CONTRACTOR SHALL INSTALL TENANT VENDOR PROVIDED CO2 SENSOR 7'-0" A.F.F. THESE SENSOR SHALL CONTROL SALES RTUS.
- M04 CONTRACTOR SHALL LOCATE BOTTOM OF STOCK ROOM DUCTWORK ABOVE LIGHTING BID ANY DEVIATION TO THIS DIMENSION DUE TO INTERFERENCE WITH ANY BUILDING OBSTRUCTIONS SUCH AS STRUCTURE, OVERHEAD DOORS, ETC. SHALL BE BROUGHT TO THE ATTENTION OF THE ENGINEER PRIOR TO FABRICATING THE DUCTWORK.
- M05 PROVIDE 1" AIRSPACE BETWEEN BOTTOM OF DOOR AND FINISHED FLOOR FOR AIRFLOW.
- M06 COVER OPEN END OF RETURN DUCT WITH 1" MESH HARDWARE CLOTH IN A REMOVABLE METAL FRAME.
- M09 EXISTING HVAC UNIT TO REMAIN. CONTRACTOR SHALL SERVICE HVAC COMPONENTS AND PROVIDE AND INSTALL NEW ACCESSORIES AND CONTROLS AS INDICATED ON PLANS, SCHEDULE, NOTES, AND AS REQUIRED TO MEET THE SEQUENCE OF OPERATIONS OUTLINED IN THE PROJECT SPECIFICATIONS. CONNECT NEW DUCTS TO DUCT DROPS FROM EXISTING ROOFTOP UNITS PROVIDED BY OTHERS WITH TRANSITION FITTINGS.
- M10 FURNISH AND INSTALL SMOKE DUCT DETECTOR (SYSTEM SENSOR #04120) IN RETURN AIR DROP FROM UNIT. WIRE SMOKE DUCT DETECTOR TO BUILDING FIRE ALARM CONTROL PANEL OR FURNISH AND INSTALL A REMOTE AUDIBLE/VISUAL ALARM DEVICE WITH A REMOTE TEST SWITCH (SYSTEM SENSOR #RTS2-AOS) LOCATED IN AN APPROVED LOCATION. FIELD VERIFY EXACT REQUIREMENTS. CONTRACTOR SHALL TEST SYSTEM TO ENSURE PROPER FUNCTION PRIOR TO TENANT OCCUPANCY SPACE.
- M11 PROVIDE NEW ROOF MOUNTED EXHAUST FAN AND BALANCE TO THE SCHEDULED AIR FLOW. MAINTAIN A MINIMUM OF 100" FROM ANY BUILDING INTAKE. ALL ROOF WORK TO BE DONE BY LANDLORD APPROVED ROOFING CONTRACTOR AT THE GENERAL CONTRACTORS EXPENSE.
- M12 INSTALL AIR CURTAIN 1" ABOVE FRONT ENTRANCE DOOR. AIR CURTAIN TO OPERATE WHEN FRONT ENTRANCE DOOR IS OPENED AND TO SHUT OFF WHEN DOOR IS CLOSED.
- M13 MOUNT TRANSFER GRILLES AS HIGH AS POSSIBLE.

KLH

Professional
Engineers, PSC PC

MECHANICAL/ELECTRICAL ENGINEERS

WWW.KLHE.COM

200 CLIFF AVENUE
PELHAM NY 10803
855-442-8505
PELHAM, NEW YORK
FORT THOMAS, KENTUCKY

description

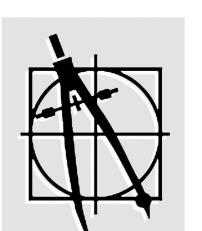
by

date

mark

revisions

| | | | | | | | | | |
|------|------------|---------|------------------|----------|-----|-------|-----|---------|-----|
| date | 06/15/2022 | project | 2022.27 / D13216 | designed | KLH | drawn | CAF | checked | JDB |
|------|------------|---------|------------------|----------|-----|-------|-----|---------|-----|

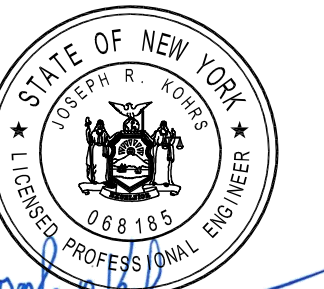


Dean Associates

Architects Incorporated

Architecture & Interior Design

7 Kimball Lane Suite 15
Lynnfield MA 01940
p: 781.397.8092 f: 781.397.8094
www.deanassoc.com



06/27/2022

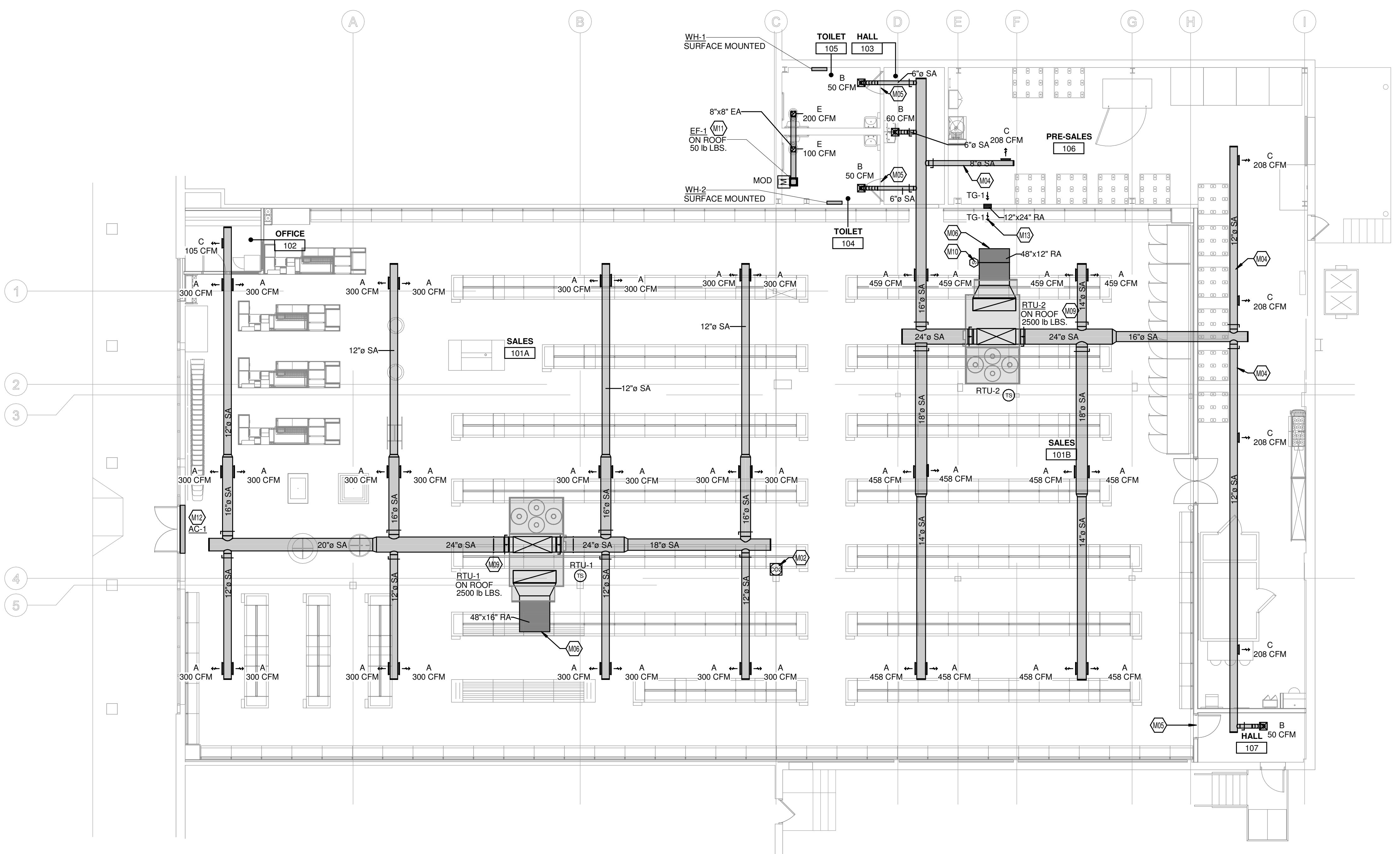
DOLLAR TREE
166 S. LIBERTY DRIVE - DEAL #13216 / STORE #2573
STONY POINT, NY 10980
MECHANICAL FLOOR PLAN

project

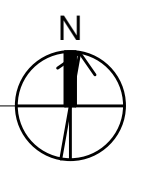
sheet

M-101

KLH PROJECT 24211



1 MECHANICAL FLOOR PLAN
1/8" = 1'-0"



OWNERSHIP OF INSTRUMENTS OF SERVICE
All reports, plans, specifications, computer files, field data, notes and other documents and instruments prepared by the Consultant as instruments of service shall remain the property of the Consultant. The Consultant shall retain all common law, statutory and other reserved rights, including, without limitation, the copyright herein.