

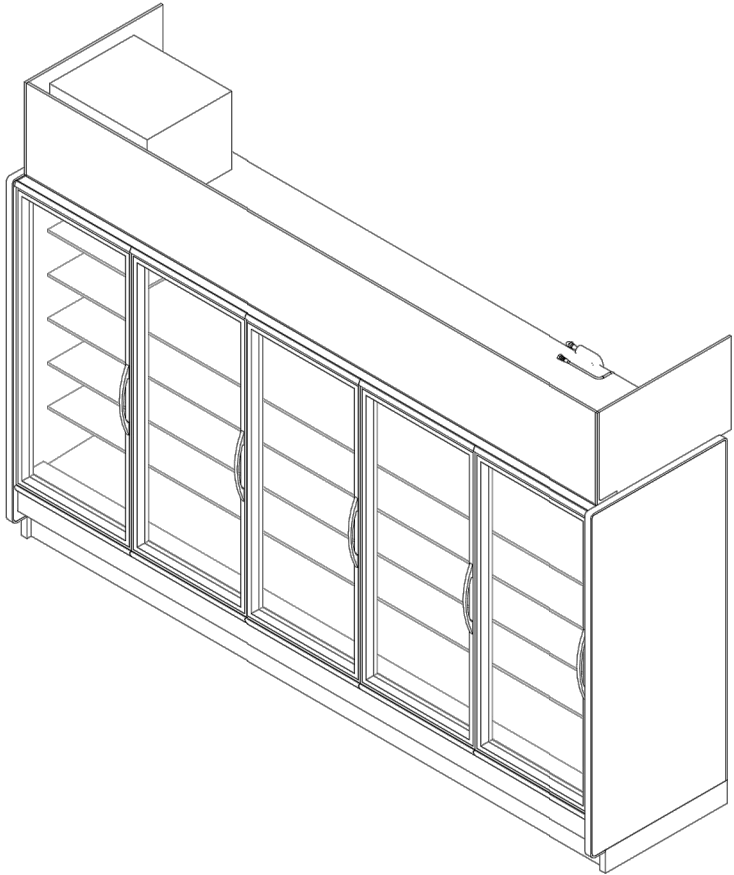
REACH-IN FREEZER/COOLER UNIT

JNRBHSA

High Narrow Reach-In Self Contained Merchandiser
1, 2, 3, 4, 5 Door & 4' (Dairy/Deli/Beverage)

GENERAL NOTES:

- Lighting Controls and Anti Sweat Heat Controls are Required
- Option 1: OEM Provided: Occupancy Sensor Based Lighting Controls (On/Off) & Hillphoenix provided embedded Anti Sweat Controls are standard, unless otherwise specified
- Option 2: End User Provided: Lighting Controls should be Occupancy Sensor Based or on a minimum 8 Hour Off Schedule. Customer provided A/S Heat Controls should be set to 30% minimum off time at 75°F/55%RH
- 1 Door & 4' case lengths available in 120V R448A/R448A condensing unit configuration.
- 2,3,4 & 5 door lengths available in 208V R404A/R448A condensing unit configuration.



SHIPPING WEIGHT	
Case	Weight
JNRBHSA	---



JNRBHSA

Rev. Date	Rev. #	Rev. Title
10-16-19	11	DATA UPDATE
10-16-19	10	ENDVIEW UPDATE



REACH-IN FREEZER/COOLER SHEET 1 OF 8

JNRBHSA (R404A)

High Narrow Reach-In Self Contained Merchandiser
1, 2, 3, 4, 5 Door & 4' (Dairy/Deli/Beverage)

SYSTEM REQUIREMENT (R-404A REFRIGERANT)

Case Length	Volts	Phase	Frequency	Minimum Circuit Ampacity (MCA)	Maximum Overcurrent Protection (MOP)
2 Door	208	1	60	16.3	20
3 Door	208	1	60	16.5	20
4 Door	208	1	60	16.6	20
5 Door	208	1	60	18.4	20

*. 24 Hour Energy values includes evaporator fans, standard LEDs, anti-condensate heat & condensing unit

GUIDELINES AND CONTROL SETTINGS (R-404A REFRIGERANT)

Case Length	Application	Superheat Set Point @ Bulb (°F)	Discharge Air (°F)	Set Point Differential (°F)	Discharge Air Velocity (FPM)
2 - 5 Door	Beverage	6 - 8	35	6	230
2 - 5 Door	Dairy	6 - 8	30	6	230
2 - 5 Door	Deli	6 - 8	29	6	230

CONDENSING UNIT DATA (R-404A REFRIGERANT)

Case Length	Volts	Phase	Frequency	Horsepower	Running Load Amps (RLA) (Amps)	Locked Rotor Amps (LRA) (Amps)	Refrigerant	Lbs. of Refrigerant
2 Door	208	1	60	1/3	4.2	16.8	R404A	2.2
3 Door	208	1	60	1/3	4.2	16.8	R404A	2.6
4 Door	208	1	60	1/3	4.2	16.8	R404A	3.0
5 Door	208	1	60	1/2	5.3	26.5	R404A	3.5

DEFROST CONTROLS (R-404A REFRIGERANT)

Case Length	Defrosts Per Day	Run-Off Time (Min)	Fail-Safe (Min)	Termination Temp (°F)
2 - 5 Door	2	0	46	44

DEFROST SCHEDULE (R-404A REFRIGERANT)

Defrosts Per Day	Time
2	12 a.m. - 12 p.m.

NOTES:

- "---" indicates that this feature is not an option on this case model.
- Listed discharge air velocity represents the average velocity at the peak of defrost.
- Temperature and defrost settings listed below are recommended start-up settings. Final operational settings may need to be adjusted for the store conditions in which the case operates.
- The recommended evaporator temperatures may need to be adjusted based on system setup, store conditions, etc. The minimum recommended evaporator temperature is 4°F below the listed evaporator temperature.
- The 24 Hour Energy Value is based upon AHRI 1200 test conditions with Hillphoenix provided Lights, occupancy sensor based (on/off) lighting control and dew point based anti sweat heat controller.



JNRBHSA (R404A)

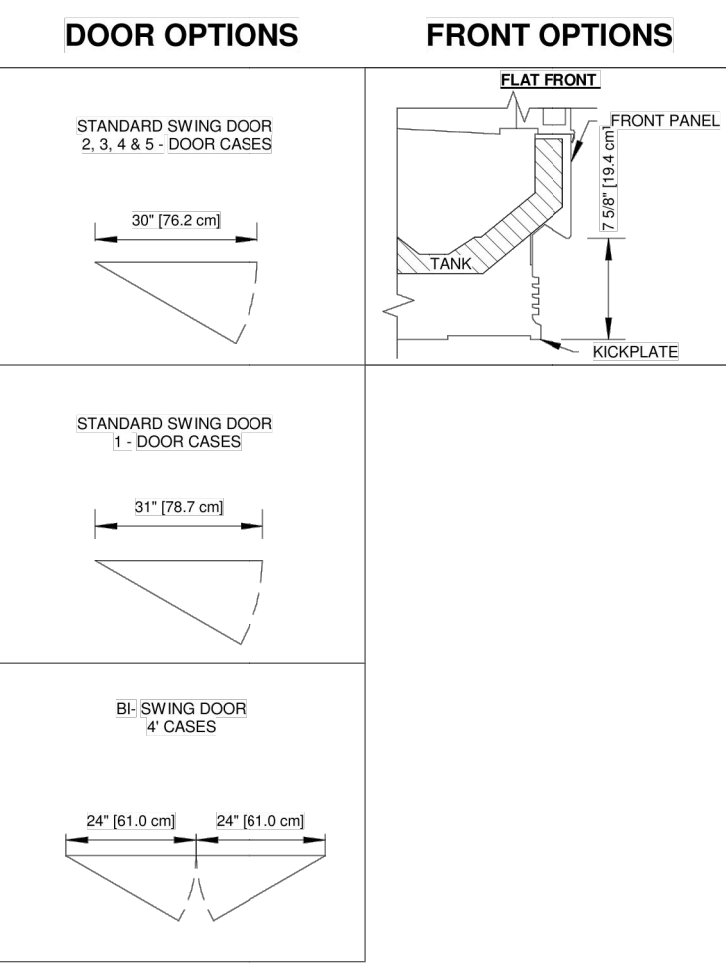
Rev. Date	Rev. #	Rev. Title
10-16-19	11	DATA UPDATE
10-16-19	10	ENDVIEW UPDATE



REACH-IN FREEZER/COOLER SHEET 2 OF 8

JNRBHSA

High Narrow Reach-In Self Contained Merchandiser
1, 2, 3, 4, 5 Door & 4' (Dairy/Deli/Beverage)



JNRBHSA

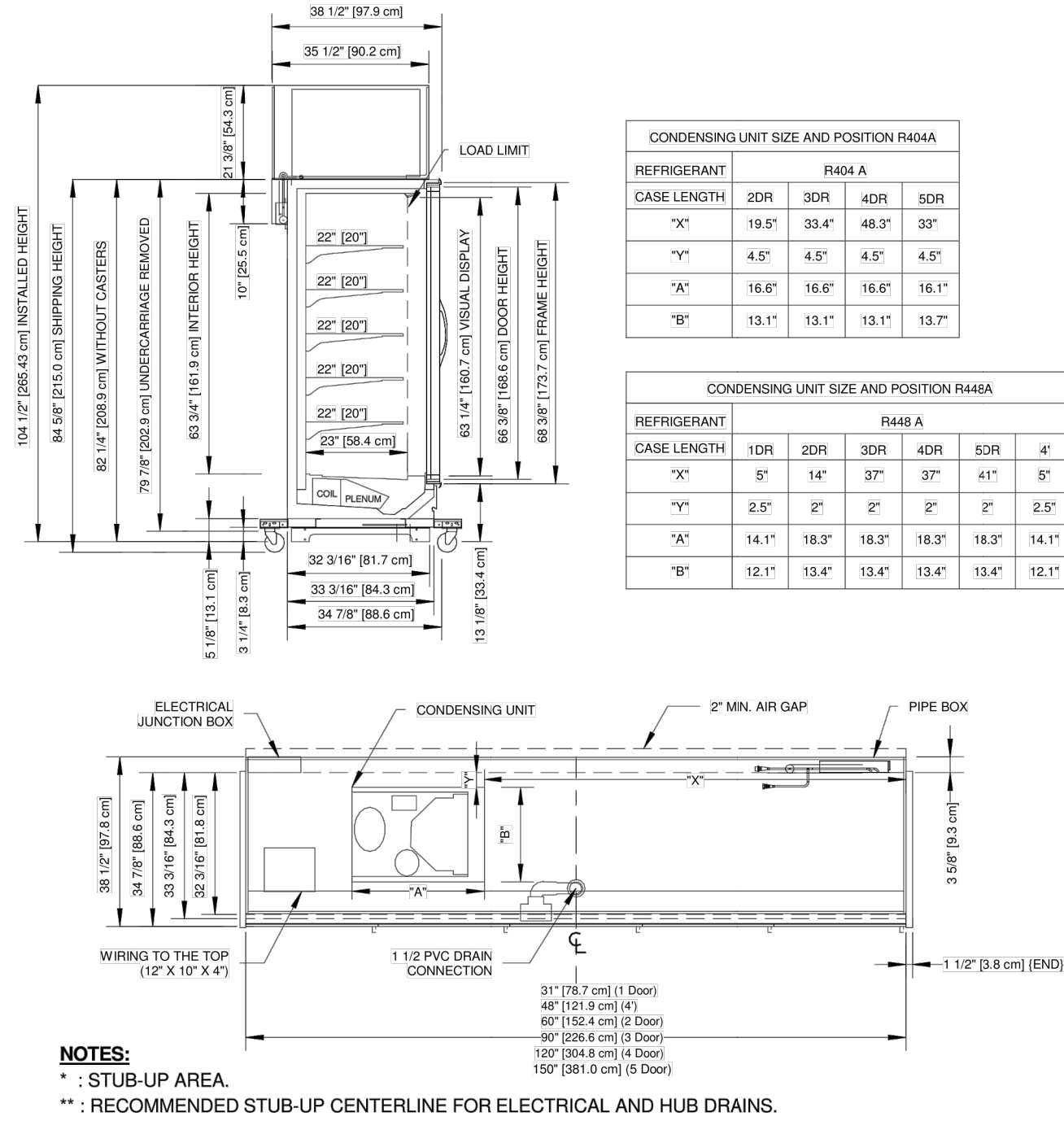
Rev. Date	Rev. #	Rev. Title
10-16-19	11	DATA UPDATE
10-16-19	10	ENDVIEW UPDATE



REACH-IN FREEZER/COOLER SHEET 3 OF 8

JNRBHSA

High Narrow Reach-In Self Contained Merchandiser
1, 2, 3, 4, 5 Door & 4' (Dairy/Deli/Beverage)



NOTES:

- "---" : STUB-UP AREA
- ** : RECOMMENDED STUB-UP CENTERLINE FOR ELECTRICAL AND HUB DRAINS.
- Specialized Base Frame:
- Case fits through 80" doorway with shipping undercarriage removed.
- 2" lifting brackets (installed) & 3.25" ship lose risers combine for 5" baseframe once installed.
- Drain traps ship loose.
- Ends add approximately 1" to case height, 1/2" to the back & 1" to the front.



JNRBHSA

Rev. Date	Rev. #	Rev. Title
10-16-19	11	DATA UPDATE
10-16-19	10	ENDVIEW UPDATE



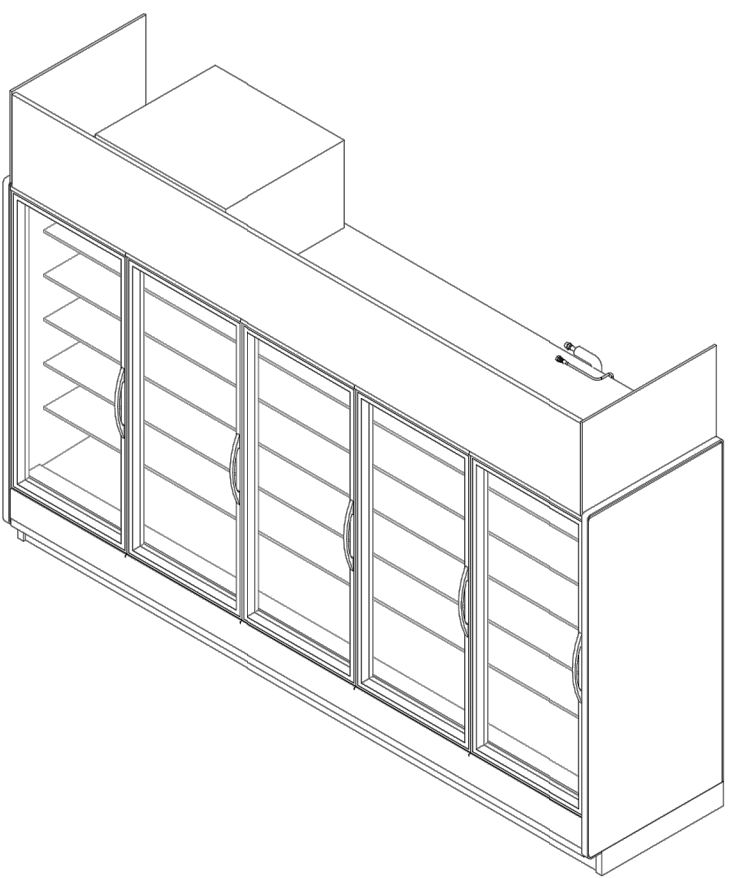
REACH-IN FREEZER/COOLER SHEET 4 OF 8

JNRZHS

High Narrow Reach-In Self Contained Merchandiser
2, 3, 4 & 5 Door (Frozen Food)

GENERAL NOTES:

- Lighting Controls and Anti Sweat Heat Controls are Required
- Option 1: OEM Provided: Occupancy Sensor Based Lighting Controls (On/Off) & Hillphoenix provided embedded Anti Sweat Controls are standard, unless otherwise specified
- Option 2: End User Provided: Lighting Controls should be Occupancy Sensor Based or on a minimum 8 Hour Off Schedule. Customer provided A/S Heat Controls should be set to 30% minimum off time at 75°F/55%RH
- 2,3,4, & 5 door case lengths are available in 208V R404A / R448A Condensing Unit Configuration



SHIPPING WEIGHT	
Case	Weight
JNRZHS	---



JNRZHS

Rev. Date	Rev. #	Rev. Title
10-17-19	7	ENDVIEW UPDATE
9-12-19	6	DATA UPDATE



2 REACH-IN FREEZER/COOLER SHEET 5 OF 8

JNRZHS (R404A)

High Narrow Reach-In Self Contained Merchandiser
2, 3, 4 & 5 Door (Frozen Food)

SYSTEM REQUIREMENT (R404A)

Case Length	Volts	Phase	Frequency	Minimum Circuit Ampacity (MCA)	Maximum Overcurrent Protection (MOP)
2 Door	208	1	60	24.1	30.0
3 Door	208	1	60	24.9	30.0
4 Door	208	1	60	29.8	30.0
5 Door	208	1	60	30.0	30.0

*. 24 Hour Energy values includes evaporator fans, standard LEDs, anti-condensate heat & condensing unit

GUIDELINES AND CONTROL SETTINGS (R404A)

Case Length	Superheat Set Point @ Bulb (°F)	Set Point Differential (°F)	Discharge Air (°F)	Discharge Air Velocity (FPM)
2 Door	3 - 5	6	-9	300
3 Door	3 - 5	6	-9	300
4 Door	3 - 5	6	-9	300
5 Door	3 - 5	6	-9	300

CONDENSING UNIT DATA (R404A)

Case Length	Volts	Phase	Frequency	Horsepower	Running Load Amps (RLA) (Amps)	Locked Rotor Amps (LRA) (Amps)	Refrigerant	Lbs. of Refrigerant
2 Door	208	1	60	3/4	9.0	43.0	R404A	2.8
3 Door	208	1	60	1	9.3	46.0	R404A	3.4
4 Door	208	1	60	1 1/4	12.6	55.0	R404A	3.7
5 Door	208	1	60	2	12.0	56.0	R404A	6.2

DEFROST CONTROLS (R404A)

Electric Defrost				
Defrosts Per Day	Run Off Time (Min) Electric	Fail-Safe (Min)	Termination Temp (°F)	
1	0	46	46	

DEFROST SCHEDULE (R404A)

Defrosts Per Day	Time
1	12 midnight

NOTES:

- "---" indicates that this feature is not an option on this case model.
- Listed discharge air velocity represents the average velocity at the peak of defrost.
- Temperature and defrost settings listed below are recommended start-up settings. Final operational settings may need to be adjusted for the store conditions in which the case operates.
- The recommended evaporator temperatures may need to be adjusted based on system setup, store conditions, etc. The minimum recommended evaporator temperature is 4°F below the listed evaporator temperature.
- The 24 Hour Energy Value is based upon AHRI 1200 test conditions with Hillphoenix provided Lights, occupancy sensor based (on/off) lighting control and dew point based anti sweat heat controller.



JNRZHS (R404A)

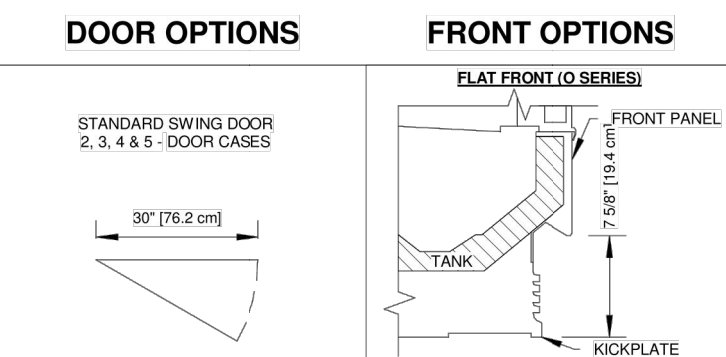
Rev. Date	Rev. #	Rev. Title
10-17-19	7	ENDVIEW UPDATE
9-12-19	6	DATA UPDATE



REACH-IN FREEZER/COOLER SHEET 6 OF 8

JNRZHS

High Narrow Reach-In Self Contained Merchandiser
2, 3, 4 & 5 Door (Frozen Food)



JNRZHS

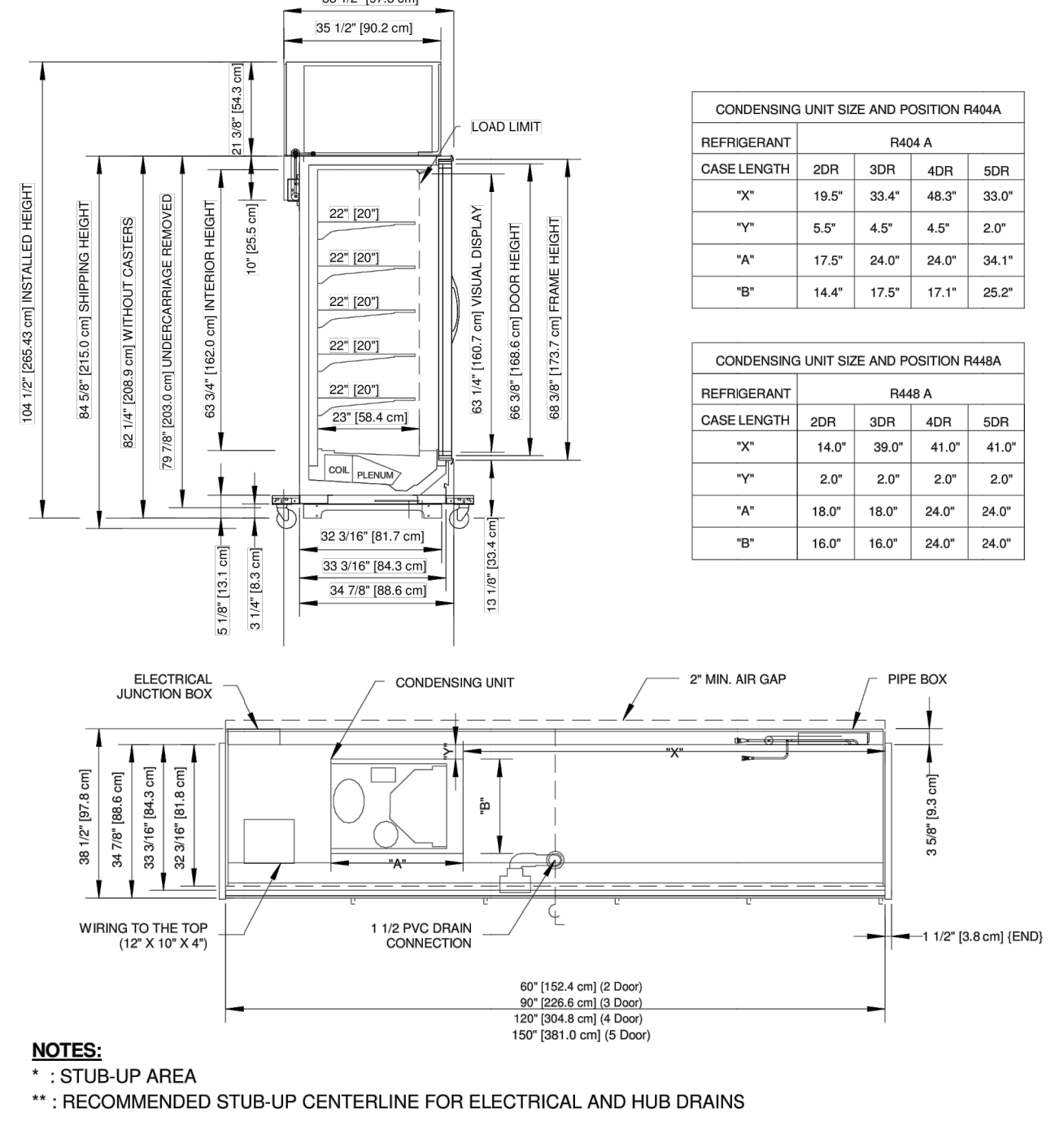
Rev. Date	Rev. #	Rev. Title
10-17-19	7	ENDVIEW UPDATE
9-12-19	6	DATA UPDATE



REACH-IN FREEZER/COOLER SHEET 7 OF 8

JNRZHS

High Narrow Reach-In Self Contained Merchandiser
2, 3, 4 & 5 Door (Frozen Food)



NOTES:

- "---" : STUB-UP AREA
- ** : RECOMMENDED STUB-UP CENTERLINE FOR ELECTRICAL AND HUB DRAINS
- Specialized Base Frame.
- Case fits through 80" doorway with shipping undercarriage removed.
- 2" fitting brackets (installed) & 3.25" ship lose risers combine for 5" baseframe once installed.
- Drain traps ship loose.
- Ends add approximately 1" to case height, 1/2" to the back & 1" to the front.



JNRZHS

Rev. Date	Rev. #	Rev. Title
10-17-19	7	ENDVIEW UPDATE
9-12-19	6	DATA UPDATE



REACH-IN FREEZER/COOLER SHEET 8 OF 8

description

by

mark

date

revisions

xx/xx/xx
52xxx

date
project
designed
drawn
checked

PROFESSIONAL OF RECORD

PKCNE_314-821-1100

project
drawing
ADDRESS
DOLLAR TREE
SHOPPING CENTER NAME
REACH-IN UNITS DETAILS AND SPECIFICATIONS

DS1

FOR REFERENCE ONLY