

PLUMBING & HVAC PIPING LEGEND	
(NOTE: ALL SYMBOLS MAY NOT APPEAR ON DRAWINGS)	
	T&P VALVE
	SHOWER DRAIN
	FLOOR DRAIN
	AREA DRAIN
	ROOF DRAIN
	OVERFLOW ROOF DRAIN
	HOSE BIBB OR WALL HYDRANT
	VENT THRU ROOF
	PRESSURE GAUGE
	FLOW SWITCH
	POINT OF CONNECTION
	POINT OF DEMOLITION
	THERMOSTAT SENSOR
	CHILLED WATER SUPPLY
	CHILLED WATER RETURN
	CONDENSER WATER SUPPLY
	CONDENSER WATER RETURN
	GAS PIPING
	DRAIN LINE
	FLEXIBLE PIPE CONNECTION
	COLD WATER LINE
	DOMESTIC HOT WATER RETURN
	DOMESTIC HOT WATER SUPPLY
	SANITARY LINE
	GREASE WASTE LINE
	VENT LINE
	REFRIGERANT SUCTION / LIQUID LINE
	STORM DRAIN LINE
	SUMP PUMP DISCHARGE
	SEWAGE EJECTOR DISCHARGE
	PUMPED STEAM CONDENSATE RETURN
	MEDIUM PRESSURE STEAM
	HEATING HOT WATER RETURN
	HEATING HOT WATER SUPPLY
	PITCH DOWN IN DIRECTION OF ARROW
	SQUARE HEAD COCK
	THERMOMETER
	COMBINATION PRESSURE & TEMPERATURE TAP (PETE'S PLUG)
	STRAINER WITH BLOW OFF
	UNION OF FLANGED CONNECTION
	BUCKET TRAP
	CLEANOUT IN LINE
	CLEANOUT IN FLOOR
	WALL CLEANOUT
	OS & Y VALVE
	GATE VALVE
	BUTTERFLY VALVE
	BALL VALVE
	CHECK VALVE
	SOLENOID VALVE
	PRESSURE RELIEF VALVE
	AUTOMATIC, 2 WAY VALVE
	AUTOMATIC, 3 WAY VALVE
	CIRCULATION PUMP

HVAC LEGEND	
(NOTE: ALL SYMBOLS MAY NOT APPEAR ON DRAWINGS)	
	LINED DUCTWORK
	SUPPLY DUCT
	RETURN DUCT
	EXHAUST DUCT
	SUPPLY DUCT THROUGH ROOF
	RETURN DUCT THROUGH ROOF
	EXHAUST DUCT THROUGH ROOF
	DIRECTION OF EXHAUST RELIEF
	SUPPLY DIRECTION
	STATIC PRESSURE SENSOR
	MOTORIZED VOLUME DAMPER
	BACKDRAFT DAMPER
	CONICAL TAP W/DAMPER
	ROUND DUCT SIZE
	OVAL DUCT SIZE
	FLEXIBLE DUCT RUNOUT
	FLEXIBLE DUCT CONNECTION
	MANUAL VOLUME DAMPER
	FIRE DAMPER IN DUCT
	FIRE SMOKE DAMPER IN DUCT
	DUCTWORK (SHEET METAL)
	DUCTWORK, DIRECTION OF SLOPE
	EXISTING SUPPLY AIR GRILLE
	EXISTING AIR DEVICE TO BE RELOCATED
	NEW SUPPLY AIR DIFFUSER
	EXISTING SLOT DIFFUSER TO REMAIN
	EXISTING SLOT DIFFUSER TO BE RELOCATED
	NEW SLOT DIFFUSER
	DUCT MOUNTED SMOKE DETECTOR

GENERAL NOTES FOR ALL MECHANICAL WORK

GENERAL ITEMS

- GENERAL NOTES ON THIS DRAWING ARE APPLICABLE TO EACH MECHANICAL DRAWING OF THIS SET. SEE EACH DRAWING FOR SPECIFIC NOTES APPLICABLE TO SPECIFIC SCOPE AREAS.
- VERIFY ALL MEASUREMENTS. NO EXTRA COMPENSATION WILL BE ALLOWED BECAUSE OF DIFFERENCES BETWEEN WORK SHOWN ON THE DRAWINGS AND ACTUAL MEASUREMENTS AT THE SITE OF CONSTRUCTION. DO NOT SCALE THE DRAWINGS. DRAWINGS ARE A DIAGRAMMATIC REPRESENTATION AND INTENDED TO CONVEY INTENT.
- UPON COMPLETION OF THE WORK, THOROUGHLY CLEAN ALL EXPOSED PORTIONS OF THE MECHANICAL AND ELECTRICAL EQUIPMENT PROVIDED AS WELL AS THE GENERAL SCOPE AREA. REMOVE ALL TRACES OF SOIL/DIRT, LABELS, GRADE, OIL, AND OTHER FOREIGN MATERIAL USING ONLY THE TYPE CLEANER RECOMMENDED BY THE MANUFACTURER OF ANY ITEM BEING CLEANED AND APPROVED BY OWNER FOR USE IN THE SCOPE AREA.
- CONTRACTOR SHALL DESIGNATE ONE PERSON TO SERVE AS PRIMARY POINT OF COMMUNICATION WITH PROJECT TEAM.
- WORK AMONG ALL TRADES SHALL BE FULLY COORDINATED AS REQUIRED IN THE FIELD TO AVOID SPACE CONFLICTS AND INTERRUPTION OF THE FLOW OF WORK. CONFLICTS SHALL BE IMMEDIATELY REPORTED IN WRITING TO ENGINEER AND OWNERS REPRESENTATIVE.
- THE CONTRACTOR SHALL TAKE PROPER PRECAUTIONS TO PROTECT ANY EXISTING CONSTRUCTION AND ADJACENT PROPERTY, WITH WHICH WORK COMES IN CONTACT, AND OVER WHICH HE MAY TRANSPORT, HOIST OR MOVE MATERIALS, EQUIPMENT, DEBRIS, ETC., AND SHALL REPAIR SATISFACTORILY ALL DAMAGES CAUSED BY HIM DURING CONSTRUCTION.
- ALL EQUIPMENT SHALL BE NEW, UNLESS NOTED OTHERWISE, AND INSTALLED IN ACCORDANCE WITH MANUFACTURER'S PUBLISHED RECOMMENDATIONS FOR THE SERVICE INTENDED. PROVIDE ONLY PRODUCTS BEARING UNDERWRITERS LABORATORIES (UL) LABEL AS APPLICABLE.
- CONFIRM OUTSIDE AIR INTAKE OPENINGS FOR VENTILATION AIR ARE LOCATED AT LEAST 10 FEET MEASURED IN ANY DIRECTION FROM ANY FLUES, VENTS, CHIMNEYS, GAS METERS, GAS REGULATORS, PLUMBING VENTS UNLESS TOP OF SUCH INTAKE OPENING IS 2 FEET BELOW ANY OF THE LISTED ITEMS.
- OVERHEAD PIPING IN SPACES WITHOUT HUNG CEILINGS SHALL BE RUN AS CLOSE TO ROOF DECK AS PRACTICAL, AS CLOSE TO PARALLEL JOISTS AS POSSIBLE, AND ABOVE LIGHTING FIXTURES TO CONCEAL PIPING.
- OVERHEAD DUCTWORK AND PIPING IN SPACES WITH CEILINGS SHALL BE CONCEALED UNLESS OTHERWISE NOTED.
- PROVIDE PIPE SLEEVES LARGE ENOUGH TO ALLOW FOR REQUIRED LATERAL MOVEMENT OF PIPING.
- MAINTAIN A MINIMUM CLEARANCE FOR LIGHTS OF 7" ABOVE FINISHED CEILING AND 1" MINIMUM BELOW ALL DUCTS, PIPES, CONDUIT OR ANY OTHER EQUIPMENT IN THE CEILING SPACE. MAINTAIN MANUFACTURER'S RECOMMENDED SERVICE ACCESS CLEARANCE AT ALL EQUIPMENT.
- COORDINATE LOCATION OF GRILLES, REGISTERS, DIFFUSERS, THERMOSTATS AND OTHER WALL OR CEILING MOUNTED HVAC ACCESSORIES WITH REFLECTED CEILING PLAN, LIGHTING FIXTURE LAYOUT AND ACCESSORIES INSTALLED BY OTHER TRADES SO AS TO PRESENT A NEAT AND ATTRACTIVE INSTALLATION THROUGHOUT THE ENTIRE BUILDING. IT IS THE INTENT FOR GRILLES, REGISTERS AND DIFFUSERS TO BE INSTALLED IN THE CENTER OF CEILING PANELS.
- THE DIAMETER OF THE SUPPLY PIPE AT ANY GAS FIRED EQUIPMENT SHALL NOT BE OF A SMALLER SIZE THAN THE INLET CONNECTION TO THE EQUIPMENT.
- ARRANGE PIPING AND DUCTWORK, PARTICULARLY ABOVE CEILING, AS REQUIRED TO CLEAR STRUCTURE, DUCTS, CONDUITS, ETC., ALLOWING SPACE FOR PIPE HANGERS, EXPANSION LOOPS AND ACCESS TO VALVES, FILTERS, AND MAINTENANCE OF EQUIPMENT.
- CONTRACTOR SHALL VERIFY REFRIGERANT PIPE SIZES WITH EQUIPMENT MANUFACTURER FOR THE INDICATED INSTALLATION.
- COORDINATE LOCATION AND INSTALLATION OF EQUIPMENT WITH OTHER TRADES. DO NOT SCALE DRAWINGS. SEE ARCHITECTURAL DRAWINGS FOR EXACT LOCATION OF DOORS, WINDOWS, ETC.
- THERMOSTATS AND/OR TEMPERATURE SENSORS SHALL BE LOCATED IN THE ROOMS INDICATED. INSTALL TOP OF DEVICE NO MORE THAN 48" ABOVE FINISHED FLOOR TO MATCH THE HEIGHT OF WALL SWITCHES OR OTHER WALL MOUNTED DEVICES.
- PIPING, DUCTWORK, VENTS, ETC., EXTENDING THROUGH EXTERIOR WALLS AND ROOF SHALL BE FLASHED AND COUNTER FLASHED IN A WEATHERPROOF MANNER.
- VALVES AND SPECIALTIES SHALL BE LINE SIZE EXCEPT FOR CONTROL VALVES OR UNLESS NOTED OTHERWISE.
- EXTEND DRAIN LINES TO NEAREST FLOOR DRAIN OR AS INDICATED. ROUTING SHALL NOT INTERFERE WITH PASSAGEWAYS AND MAINTENANCE. DRAINS FROM AIR CONDITIONING CONDENSATE DRAIN PANS SHALL BE TRAPPED. SLOPE CONDENSATE DRAIN PIPING AT 1/8" PER FOOT. VERIFY INVERT IS ESTABLISHED AFTER AIR HANDLING UNIT IS INSTALLED BUT PRIOR TO DUCTWORK INSTALLATION.
- EQUIPMENT CONTAINING AIR CONDITIONING COILS WHICH DO NOT HAVE A SECONDARY DRAIN OR AUXILIARY DRAIN PAN SHALL BE FITTED WITH A WATER LEVEL SENSOR IN THE PRIMARY DRAIN PAN. THE SENSOR SHALL BE WIRED TO DE-ENERGIZE THE EQUIPMENT IF WATER RISES ABOVE THE DRAIN OUTLET.
- PIPING AND DUCTWORK INSULATION SHALL BE RUN CONTINUOUSLY THROUGH NON-RATED FLOORS, WALLS, ROOF AND PARTITIONS, UNLESS OTHERWISE INDICATED.
- NO PIPING SHALL BE SMALLER THAN 1/2" UNLESS OTHERWISE NOTED.
- FOR PIPE SIZES NOT INDICATED ON PLANS, SEE EQUIPMENT CONNECTION DETAILS, FLOW DIAGRAMS, RISER DIAGRAMS AND PIPE SIZING SCHEDULE.
- PROVIDE UNION OR FLANGED CONNECTIONS AT EACH PIECE OF EQUIPMENT AND ON BOTH SIDES OF CONTROL VALVES AND PRESSURE REGULATING VALVES.

- PROPERLY SUPPORT ALL EQUIPMENT, DUCTWORK, AND PIPING WITHIN THE BUILDING AND PROVIDE ADEQUATE PROVISIONS FOR SLOPE AND ANCHORAGE. PROVIDE ALL MATERIALS REQUIRED FOR THE SUPPORT OF SUCH ITEMS INCLUDING RODS, ANGLES, ETC., TO PROPERLY SUPPORT ALL ITEMS IN A PROPER AND SAFE MANNER. CONTRACTOR SHALL USE HANGER'S RODS, INSERTS ETC., LISTED BY UNDERWRITERS' LABORATORIES FOR THE SERVICE INTENDED. HANGERS FOR COPPER PIPING SHALL BE COPPER PLATED.
- SECURELY SUPPORT ALL EQUIPMENT FROM STRUCTURAL MEMBERS PROVIDED AS NEEDED, WHICH IN TURN ARE TO BE SUPPORTED DIRECTLY FROM THE BUILDING STRUCTURE. ALL HANGERS SHALL HAVE A MINIMUM FACTOR OF SAFETY OF 5. PIPING SHALL BE SUPPORTED IN ACCORDANCE WITH THE SPECIFICATIONS. ADDITIONAL SUPPORTS OR HANGERS SHALL BE ADJACENT TO ELBOWS, TO PREVENT WEIGHT OF PIPING BEING PLACED ON THE EQUIPMENT.
- CORRECT SETTING ON BALANCING FITTINGS SHALL BE PERMANENTLY MARKED.
- INSTALL ANCHORS AND EXPANSION LOOPS WHERE INDICATED AND WHERE REQUIRED TO ALLOW FOR EXPANSION.
- SUITABLE FLASHINGS FOR OPENINGS IN THE BUILDING WALLS, FLOOR OR ROOF SHALL BE FURNISHED BY THE CONTRACTOR PROVIDING THE PENETRATING ITEM. THE INSTALLATION OF THE FLASHING AND ITS WATERIGHT INTEGRITY SHALL BE THE RESPONSIBILITY OF THE CONTRACTOR THAT PROVIDES THE SEALING AND FINISHING OF THE FLASHING. IN ALL CASES, THE FLASHING MATERIAL AND ITS INSTALLATION SHALL BE COORDINATED WITH THE GENERAL CONTRACTOR FLASHINGS FOR PENETRATIONS MAY ALSO BE PROVIDED ENTIRELY BY THE GENERAL CONTRACTOR. ALSO, REFER TO THE ARCHITECT'S SPECIFICATIONS TO COORDINATE THE COMPLETENESS OF THIS ITEM.
- ACCESSIBILITY REQUIREMENTS. (REFER TO ARCHITECTURAL PLANS FOR ADDITIONAL INFORMATION/REQUIREMENTS).

- A. THE PLANS AND SPECIFICATIONS HAVE BEEN PREPARED IN ACCORDANCE WITH THE APPLICABLE PROVISIONS OF REGULATIONS, CODES AND ORDINANCES REGARDING HANDICAPPED PERSONS. IT IS ASSUMED THAT THE CONTRACTOR IS ALSO KNOWLEDGEABLE OF SAME AND THEIR APPLICATION WITH REGARD TO HIS WORK.
- B. THE CONTRACTOR SHALL VERIFY AND COORDINATE THE TYPE OF EQUIPMENT BEING INSTALLED AND ITS LOCATION, MOUNTING HEIGHT AND CLEARANCES AS PRESCRIBED BY ALL APPLICABLE HANDICAP REGULATIONS, CODES AND ORDINANCES PRIOR TO PLACING EQUIPMENT ORDERS AND PRIOR TO INSTALLATION OF ALL WORK.
- C. GENERAL LISTING OF MOUNTING HEIGHTS:

THROUGH-PENETRATION FIRESTOP ASSEMBLIES

- PROVIDE UL LISTED THROUGH-PENETRATION ASSEMBLIES FOR FIRE WALLS AND FLOORS. REVIEW ARCHITECTURAL DRAWINGS FOR FIRE PARTITION LOCATIONS AND UL LISTINGS.

SHEET METAL

- PROVIDE INTERNAL SOUND ABSORPTIVE DUCT LINING WHERE NOTED. DUCT DIMENSIONS ARE CLEAR INSIDE DUCT LINING DIMENSIONS.
- PROVIDE ACCESS DOORS IN DUCTWORK WHERE INDICATED OR REQUIRED FOR ACCESS TO SYSTEM COMPONENTS INCLUDING THE FOLLOWING:
 - DAMPER MOTORS AND/OR MOTOR OPERATED DAMPERS
 - HUMIDIFIERS
 - FILTERS
 - BOTH SIDES OF HEATING AND COOLING COILS
 - FAN BEARINGS ENCLOSED IN DUCTS OR PLENUMS
 - FIRE DAMPERS AND SMOKE DAMPERS
 - CONTROL DAMPERS
 - SMOKE DETECTORS
- HIGH SIDEWALL REGISTERS OR GRILLES SHALL BE LOCATED 6" FROM CEILING TO TOP OF REGISTER OR GRILLE.
- SPACE ABOVE CEILING IS NOT TO BE USED AS A RETURN AIR PLENUM.
- PROVIDE A MINIMUM OF THREE TIMES THE FAN DIAMETER OF STRAIGHT DUCTWORK OFF THE SUPPLY AIR FAN DISCHARGE BEFORE ANY TAKEOFFS OR ELBOWS.
- DUCTWORK SHALL BE CONSTRUCTED TO THE SMACNA STATIC PRESSURE CLASSIFICATION OF 2" WG AND SEAL CLASS "B".
- PROVIDE EXTENDED VOLUME DAMPER CONTROL RODS SO THAT HANDLES ARE CLEAR OF DUCT INSULATION.

MAINTENANCE

- EQUIPMENT WITH FILTERS SHALL BE INSTALLED SO THAT FILTERS CAN BE EASILY REMOVED AND REPLACED.
- EQUIPMENT INSTALLED ABOVE CEILINGS SHALL BE MOUNTED APPROX. 12" ABOVE CEILING (10") FOR MAINTENANCE ACCESS.
- INSTALL PIPE RUNS AT LEAST 6" ABOVE CEILING TILES, WHERE PRACTICAL. INSTALL VALVES, AND OTHER MAINTAINABLE DEVICES LOW ENOUGH TO REACH WITH AN 8'-0" LADDER.
- PROVIDE ACCESS TO ANY INSPECTION OR MAINTAINABLE DEVICE, EQUIPMENT, ETC. - ACCESS OR ACCESS DOOR SHALL BE OF ADEQUATE SIZE TO WORK ON DEVICE.
- EXAMINE MANUFACTURER'S LITERATURE TO DETERMINE RECOMMENDED CLEARANCES. THESE CLEARANCES SHALL BE ESTABLISHED AND MAINTAINED. THE CONTRACTOR SHALL BE RESPONSIBLE FOR COORDINATING THESE REQUIREMENTS WITH ALL OTHER TRADES.

ABBREVIATIONS (NOTE: ALL ABBREVIATIONS MAY NOT APPEAR ON DRAWINGS)

A	AMPS, AMPERE	CLG	CEILING	DWG	DRAWING	FIXT	FIXTURE	IFGC	INTERNATIONAL FUEL GAS CODE	MTR	MOTOR	PCWS	PROCESS CHILLED WATER SUPPLY	SEER	SEASONAL ENERGY EFFICIENCY	UNO	UNLESS NOTED OTHERWISE
ABC	ABOVE COUNTER	FL	CLEAN OUT	EA	EACH	FL	FLOW LINE	MC	INTERNATIONAL MECHANICAL	PERF	PERFORATED	V	VOLT				
ABV	ABOVE	COL	COLUMN	EAT	ENTERING AIR TEMPERATURE	FPM	FEET PER MINUTE	IPC	INTERNATIONAL PLUMBING CODE	MVD	MANUAL VOLUME DAMPER	PLBG	PLUMBING	SENS	SENSIBLE (BTU)	VA	VALVE
A/C	AIR CONDITIONER	CONC	CONCRETE	EDH	ELECTRIC DUCT HEATER	FPW	FAN POWERED VARIABLE VOLUME TERMINAL UNIT	N2	NITROGEN GAS	NA	NOT APPLICABLE	PSIA	POUNDS PER SQUARE INCH	SHT	SHEET	VAC	VACUUM
ADJ	ADJACENT	CONSTR	CONSTRUCTION	EER	ENERGY EFFICIENCY RATIO			IN	INCHES	NC	NORMALLY CLOSED	PSIG	POUNDS PER SQUARE INCH- ABSOLUTE	SHTMTL	SHEET METAL	VAV	VARIABLE AIR VOLUME
AFF	ABOVE FINISH FLOOR	COP	COEFFICIENT OF PERFORMANCE	ELEV	ELEVATION	FT	FEET	IN WC	INCHES WATER COLUMN	NCA	NATIONAL ELECTRICAL	PVC	POLYVINYL CHLORIDE PWR POWER	VT	VENT	VENTIL	VENTILATION
AFG	ABOVE FINISH GRADE	CT	COOLING TOWER	ELEC	ELECTRICAL	F/A	FROM ABOVE	KW	KILOWATT	NEMA	NATIONAL FIRE PROTECTION ASSOCIATION	RA	RETURN AIR	VTR	VENT THRU THE ROOF		
AH	AIR HANDLER	CW	COLD WATER VALVED OPENING	EMER	EMERGENCY	F/B	FROM BELOW	KWH	KILOWATT - HOUR	NFPA	NOT IN CONTRACT	RCP	REFLECTED CEILING PLATE	W	WATTS	WB	WET BULB
AHU	AIR HANDLING UNIT	CVO	COLD WATER VALVED OPENING	EQ	EQUAL	G	GROUND	L	LENGTH	OD	OUTSIDE OPEN	REF	REFERENCE	W	WIDTH	WH	WATER HEATER
AMB	AMBIENT	EW	ENTERING WATER TEMPERATURE	EQUIP	EQUIPMENT	G	GALLONS	LAT	LEAVING AIR TEMPERATURE	OTS	OUTSIDE AIR	REFR	REFRIGERATOR	WP	WEATHERPROOF	WPO	WASTE PLUGGED OPENING
AUX	AUXILIARY, AUXILIARIES	ESP	EXTERNAL STATIC PRESSURE	EXHA	EXHAUST	GALV	GALVANIZED	LAT	LATENT (BTU)	OD	OUTSIDE DIAMETER	RPM	REVOLUTIONS PER MINUTE	WT	WEIGHT		
BLDG	BUILDING	ETR	EXISTING TO REMAIN	EXIST	EXISTING	GC	GENERAL CONTRACTOR	LIN	FT LINEAR FOOT	OS	ON CENTER	RQMT	REQUIREMENT				
BOP	BO	GPH	GALLONS PER HOUR	EXP	EXPANSION	GPM	GALLONS PER MINUTE	LN2	LIQUID NITROGEN GAS	OS	ON CENTER	RTU	ROOF TOP UNIT				
BTU	BRITISH THERMAL UNIT	H	HEIGHT	EXH	EXHAUST	LW	LEAVING WATER TEMPERATURE	MAX	MAXIMUM	PD	PRESSURE DROP	SA	SUPPLY AIR				
BTUH	BRITISH THERMAL UNIT PER HOUR	HTG	HEATING	EXP	EXPANSION	HD	HEAD	MBH	THOUSAND BTU PER HOUR	PCWR	PROCESS CHILLED WATER RETURN	SD	STORM DRAIN				
CAT	CATALOGUE	HTG	HEATING	EXP	EXPANSION	HP	HORSEPOWER	MCH	MECHANICAL								
CD	CONDENSATE DRAIN	HTG	HEATING	EXP	EXPANSION	HWR	DOMESTIC HOT WATER RETURN	MCF	THOUSAND CUBIC FEET								
CDA	CLEAN DRY AIR	HTG	HEATING	EXP	EXPANSION	FD	FLOOR DRAIN	MIN	MINIMUM								
CFH	CUBIC FEET PER HOUR	HTG	HEATING	EXP	EXPANSION	FF	FINISH FLOOR	MISC	MISCELLANEOUS								
CFM	CUBIC FEET PER MINUTE	HTG	HEATING	EXP	EXPANSION												
CHWR	CHILLED WATER RETURN	HTG	HEATING	EXP	EXPANSION												
CHWS	CHILLED WATER SUPPLY	HTG	HEATING	EXP	EXPANSION												
CI	CAST IRON	HTG	HEATING	EXP	EXPANSION												

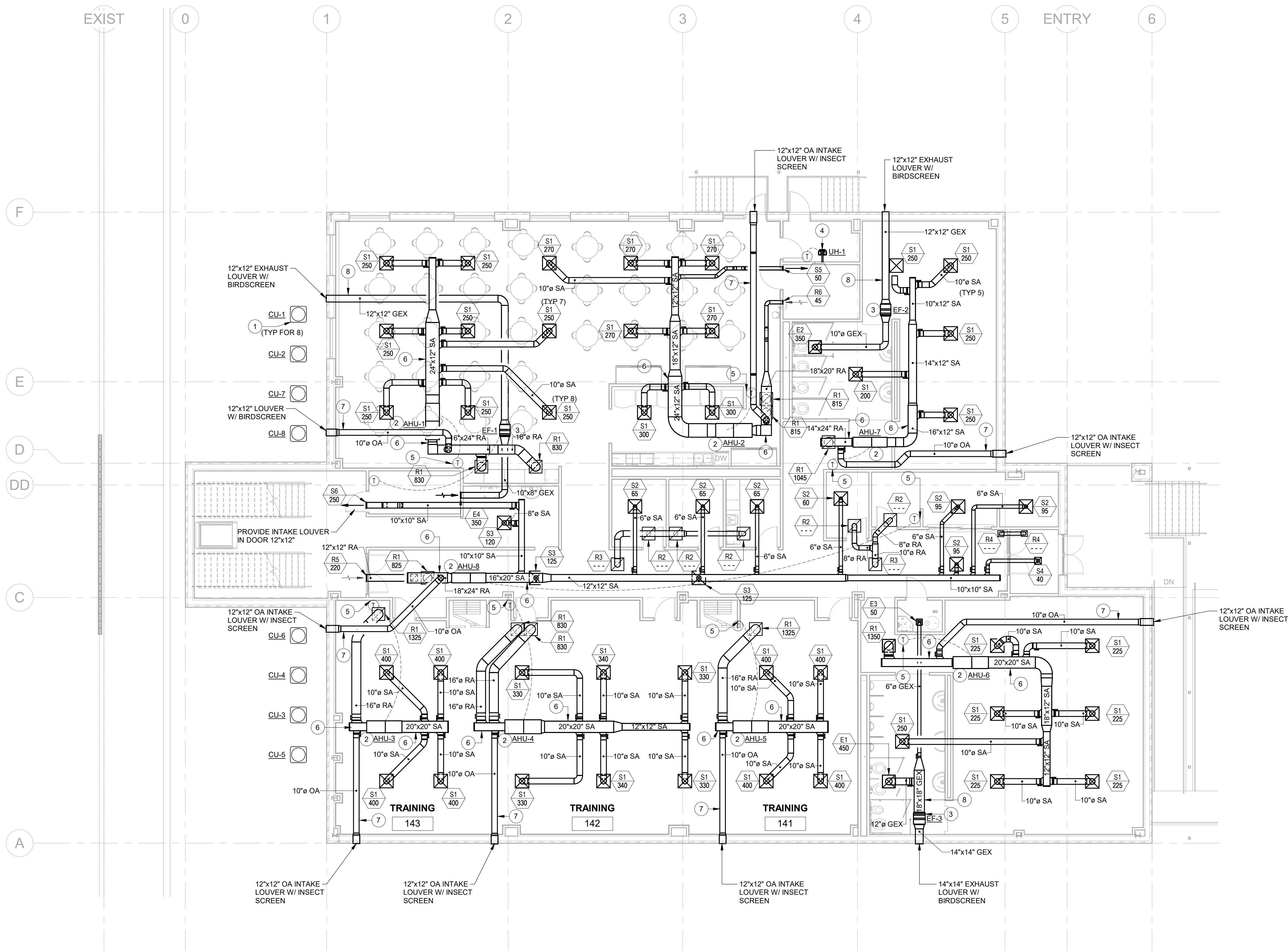
D	DRY BULB	DI	DIAMETER	D	DRY BULB	DI	DIAMETER	D	DRY BULB	DI	DIAMETER	D	DRY BULB	DI	DIAMETER	D	DRY BULB	DI	DIAMETER
DB	DRY BULB	DI	DIAMETER	DB	DRY BULB	DI	DIAMETER	DB	DRY BULB	DI	DIAMETER	DB	DRY BULB	DI	DIAMETER	DB	DRY BULB	DI	DIAMETER
DFU	DRAINAGE FIXTURE UNITS	DI	DIAMETER	DFU	DRAINAGE FIXTURE UNITS	DI	DIAMETER	DFU	DRAINAGE FIXTURE UNITS	DI	DIAMETER	DFU	DRAINAGE FIXTURE UNITS	DI	DIAMETER	DFU	DRAINAGE FIXTURE UNITS	DI	DIAMETER
DI	DIAMETER	DI	DIAMETER	DI	DIAMETER	DI	DIAMETER	DI	DIAMETER	DI	DIAMETER	DI	DIAMETER	DI	DIAMETER	DI	DIAMETER	DI	DIAMETER
DIA	DIAMETER	DIA	DIAMETER	DIA	DIAMETER	DIA	DIAMETER	DIA	DIAMETER	DIA	DIAMETER	DIA	DIAMETER	DIA	DIAMETER	DIA	DIAMETER	DIA	DIAMETER
DNR	DEIONIZED WATER RETURN	DNR	DEIONIZED WATER RETURN	DNR	DEIONIZED WATER RETURN	DNR	DEIONIZED WATER RETURN	DNR	DEIONIZED WATER RETURN	DNR	DEIONIZED WATER RETURN	DNR	DEIONIZED WATER RETURN	DNR	DEIONIZED WATER RETURN	DNR	DEIONIZED WATER RETURN	DNR	DEIONIZED WATER RETURN
DWS	DEIONIZED WATER SUPPLY	DWS	DEIONIZED WATER SUPPLY	DWS	DEIONIZED WATER SUPPLY	DWS	DEIONIZED WATER SUPPLY	DWS	DEIONIZED WATER SUPPLY	DWS	DEIONIZED WATER SUPPLY	DWS	DEIONIZED WATER SUPPLY	DWS	DEIONIZED WATER SUPPLY	DWS	DEIONIZED WATER SUPPLY	DWS	DEIONIZED WATER SUPPLY
DIFF	DIFFUSER	DIFF	DIFFUSER	DIFF	DIFFUSER	DIFF	DIFFUSER	DIFF	DIFFUSER	DIFF	DIFFUSER	DIFF	DIFFUSER	DIFF	DIFFUSER	DIFF	DIFFUSER	DIFF	DIFFUSER
DN	DOWN	DN	DOWN	DN	DOWN	DN	DOWN	DN	DOWN	DN	DOWN	DN	DOWN	DN	DOWN	DN	DOWN	DN	DOWN
DS	DOWNSPOUT	DS	DOWNSPOUT	DS	DOWNSPOUT	DS	DOWNSPOUT	DS	DOWNSPOUT	DS	DOWNSPOUT	DS	DOWNSPOUT	DS	DOWNSPOUT	DS	DOWNSPOUT	DS	DOWNSPOUT
DTL	DETAIL	DTL	DETAIL	DTL	DETAIL	DTL	DETAIL	DTL	DETAIL	DTL	DETAIL	DTL	DETAIL	DTL	DETAIL	DTL	DETAIL	DTL	DETAIL

EFFICIENCY	UNO	UNLESS NOTED OTHERWISE
	V	VOLT
	VA	VALVE
	VAC	VACUUM
	VAV	VARIABLE AIR VOLUME
S	VENTIL	VENTILATION
	VERT	VERTICAL
FACTORS'	VIF	VERIFY IN FIELD
	VPO	VENT PLUGGED OPENING
ON	VT	VENT
	VTR	VENT THRU THE ROOF
	VV	VARIABLE VOLUME TERMINAL UNIT
	W	WATTS
	W	WIDTH
	WB	WET BULB
	WH	WATER HEATER
	WP	WEATHERPROOF
	WPO	WASTE PLUGGED OPENING
	WT	WEIGHT

© 2022 COPYRIGHT C1S GROUP, INC. ALL RIGHTS RESERVED
Autodesk Docs://FRITO-LAY LIBERTY NY/22012_FINAL LIBERTY ASE_C1S_Central_R22.rvt

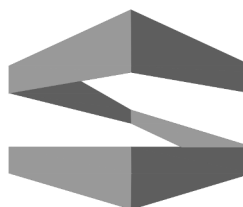
9/2/2022 10:32:33 AM

1 MECHANICAL FIRST FLOOR PLAN
1/8" = 1'-0"



KEYED NOTES

MARK	COMMENT
1	PROVIDE AND INSTALL AIR-COOLED CONDENSING UNIT WITH R-410A REFRIGERANT, CONDENSER GUARDS, LOW AMBIENT CONTROL AND ALL ASSOCIATED APPURTENANCES COMPLETE. MOUNT ON 4" CONCRETE HOUSEKEEPING PAD AND MAINTAIN MANUFACTURER'S RECOMMENDED CLEARANCES. SEE MECHANICAL SCHEDULE/DETAIL SHEETS.
2	PROVIDE AND INSTALL LP GAS FURNACE WITH DIRECT EXPANSION (DX) COOLING COIL ASSEMBLY COMPLETE WITH ALL HANGERS AND SUPPORTS. PROVIDE EMERGENCY DRAIN PAN WITH MOISTURE SENSOR BELOW COOLING COIL. SEE MECHANICAL SCHEDULE/DETAIL SHEETS.
3	PROVIDE AND INSTALL IN-LINE EXHAUST FAN COMPLETE WITH HANGERS, SUPPORTS AND ALL ASSOCIATED APPURTENANCES. SUSPEND WITH 4-POINT VIBRATION ISOLATION SPRINGS. TERMINATE AS INDICATE ON PLAN.
4	PROVIDE AND INSTALL ELECTRIC UNIT HEATER WITH UNIT-MOUNTED OR WALL-MOUNTED THERMOSTAT AS INDICATED. MOUNT APPROX. 9'-0" FROM BOTTOM OF ELECTRIC HEATER TO FINISHED FLOOR. SUSPEND FROM WALL. SEE MECHANICAL SCHEDULE/DETAIL SHEETS.
5	PROVIDE AND INSTALL WALL-MOUNTED THERMOSTAT. CONDUIT AND CONTROL WIRING COMPLETE. MOUNT 48" AFF.
6	PROVIDE AND INSTALL GALVANIZED EXTERNALLY INSULATED, LOW PRESSURE, SUPPLY/RETURN DUCTWORK COMPLETE WITH SUPPORTS, HANGERS AND ALL ASSOCIATED APPURTENANCES.
7	PROVIDE AND INSTALL GALVANIZED EXTERNALLY INSULATED, LOW PRESSURE, OUTSIDE AIR DUCTWORK COMPLETE WITH SUPPORTS, HANGERS AND ALL ASSOCIATED APPURTENANCES.
8	PROVIDE AND INSTALL UN-INSULATED GENERAL EXHAUST DUCTWORK COMPLETE WITH HANGERS, SUPPORTS AND ALL ASSOCIATED APPURTENANCES. RUN CONCEALED IN PLENUM. GENERAL EXHAUST DUCTWORK TO BE OF NON-COMBUSTIBLE GALVANIZED STEEL SHEET METAL CONSTRUCTION.



STROHMEYER
ARCHITECTS INC.

ARCHITECT
STROHMEYER ARCHITECTS, INC.
2701 SUNSET RIDGE DR.
SUITE 607
ROCKWALL, TEXAS 75032

STRUCTURAL
DFW STRUCTURAL CONSULTING, INC.
12575 MILL RUN DRIVE
FRISCO, TEXAS 75035

MEP ENGINEERING
C1S GROUP, INC.
4231 SIGMA ROAD, #110
DALLAS, TEXAS 75244



4231 Sigma Road, Suite 110
Dallas, Texas 75244
Ph. 972-386-7005
Fax 972-386-7205
www.c1sinc.com

C1S Group, Inc.

C1S GROUP, INC.

THE SEAL APPEARING ON THIS DOCUMENT WAS AUTHORIZED BY MATTHEW TOWNSEND STRONG, NY P.E. #08484, ON THE DATE INDICATED. ALTERATION OF A SEALED DOCUMENT WITHOUT PROPER NOTIFICATION TO THE RESPONSIBLE ENGINEER IS AN OFFENSE UNDER THE ENGINEERING ACT. THE SEAL IS NOT VALID WITHOUT SIGNATURE.

FRITO-LAY LIBERTY PLANT

PLANT ADDITION
89 MILL ST
LIBERTY, NY 12754

Project Number: 2021-213
Drawing Date: 17 AUG 2022
Drawn: CBC
Checked: MTS
Scale: 1/8" = 1'-0"

© 2020 Strohmeier Architects, Inc.

Revisions:

#	Revision Date	Revision Description
1	17 AUG 2022	ISSUE FOR PERMIT
2	02 SEPT 2022	OWNER REVIEW

Sheet Title:

**MECHANICAL
FIRST FLOOR PLAN**

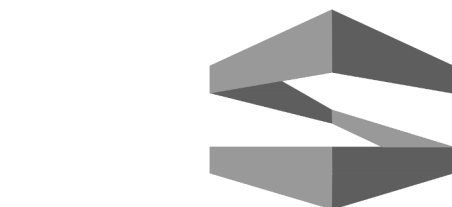
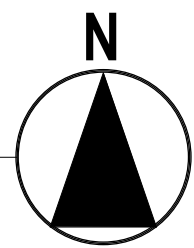
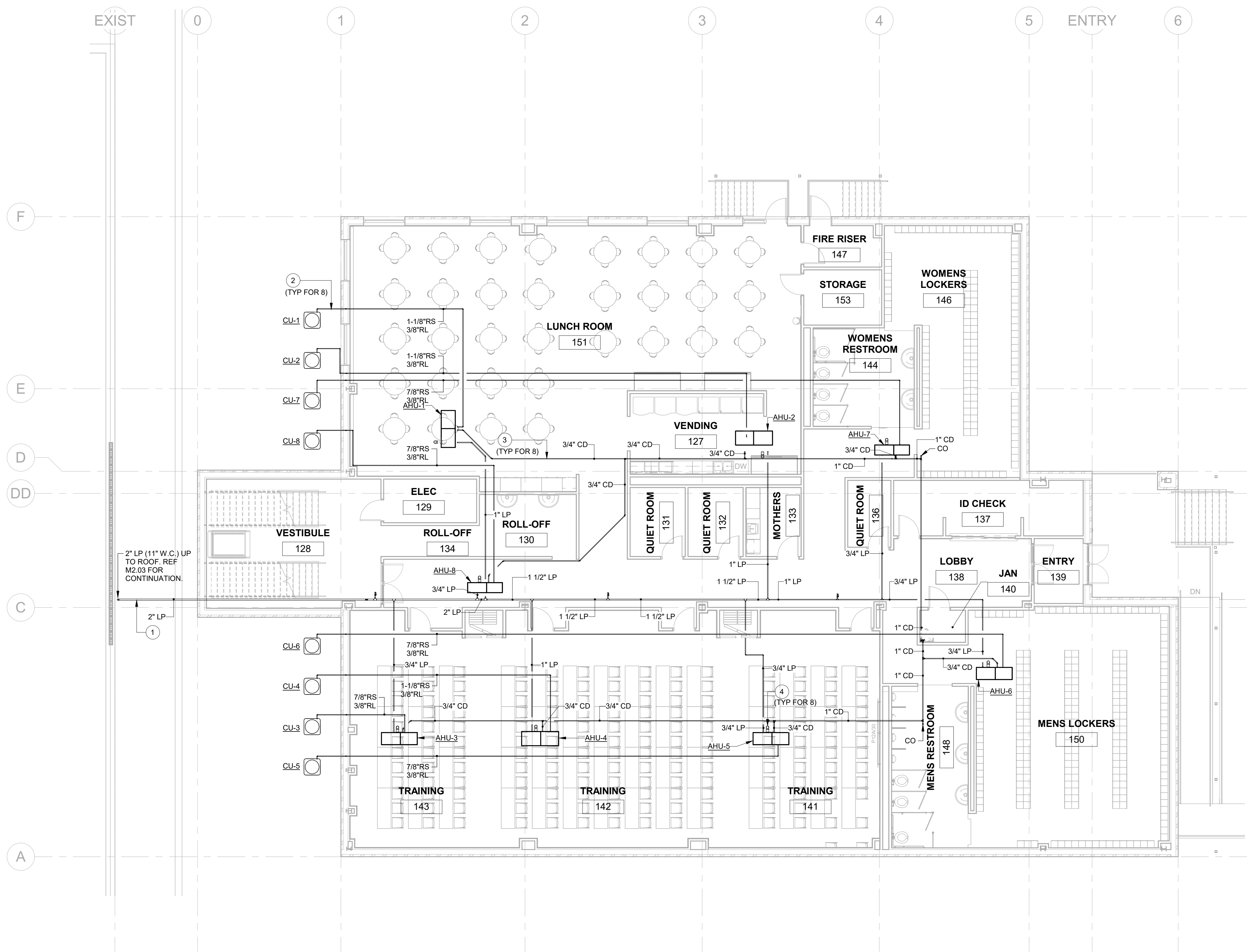
M2.01

© 2022 COPYRIGHT C1S GROUP, INC. ALL RIGHTS RESERVED
Autodesk Docs://FRITO-LAY LIBERTY NY/2012_FLNA LIBERTY ASE_C1S_Central_R22.rvt

9/2/2022 10:32:57 AM

1 MECHANICAL PIPING FIRST FLOOR PLAN
1/8" = 1'-0"

KEYED NOTES	
MARK	COMMENT
1	PROVIDE AND INSTALL LIQUID PROPANE (LP) GAS PIPING, HANGERS AND SUPPORTS COMPLETE (MAX 5'-0" O/C). PERFORM WORK SO AS NOT TO VOID EXISTING ROOF WARRANTY. ROUTE AS INDICATED. ENSURE MAINTENANCE ACCESS IS MAINTAINED.
2	PROVIDE AND INSTALL INSULATED REFRIGERANT SUCTION LINE, LIQUID LINE AND SUPPORTS COMPLETE. SIZE RS/RL IN ACCORDANCE WITH MANUFACTURER'S RECOMMENDATIONS. ROUTE RS/RL UP TO ABOVE CEILING SPACE THROUGH EXTERIOR WALL CAVITY AND TO ASSOCIATED AIR HANDLING UNITS.
3	PROVIDE AND INSTALL PVC CONDENSATE DRAIN PIPING AND SUPPORTS. ROUTE AS INDICATED. INTERIOR LOCATIONS SHALL BE INSULATED. PROVIDE CONDENSATE DRAIN TRAP AT COOLING COILS. SLOPE DRAINS A MINIMUM OF 1/8" PER LINEAR FOOT TOWARD DISCHARGE. TERMINATE DRAINS 2" ABOVE RIM OF SINK IN JANITOR CLOSET.
4	PROVIDE AND INSTALL CONCENTRIC FLUE VENT KIT PER MANUFACTURER'S RECOMMENDATIONS. REFERENCE ROOF PLAN FOR TERMINATION.



STROHMEYER
ARCHITECTS INC.

ARCHITECT
STROHMEYER ARCHITECTS, INC.
2701 SUNSET RIDGE DR.
SUITE 607
ROCKWALL, TEXAS 75032

STRUCTURAL
DFW STRUCTURAL CONSULTING, INC.
12575 MILL RUN DRIVE
FRISCO, TEXAS 75035

MEP ENGINEERING
C1S GROUP, INC.
4231 SIGMA ROAD, #110
DALLAS, TEXAS 75244

c1s 4231 Sigma Road, Suite 110
Dallas, Texas 75244
Ph. 972-386-7005
Fax 972-386-7205
www.c1sinc.com
C1S Group, Inc.

C1S GROUP, INC.

THE SEAL APPEARING ON THIS
DOCUMENT WAS AUTHORIZED BY
MATTHEW TOWNSEND STRONG,
NY P.E. #08484, ON THE DATE
INDICATED. ALTERATION OF A SEALED
DOCUMENT WITHOUT PROPER
NOTIFICATION TO THE RESPONSIBLE
ENGINEER IS AN OFFENSE UNDER THE
ENGINEERING ACT. THE SEAL IS NOT VALID
WITHOUT SIGNATURE.

FRITO-LAY LIBERTY PLANT

PLANT ADDITION
89 MILL ST
LIBERTY, NY 12754

Project Number: 2021-213
Drawing Date: 17 AUG 2022
Drawn: CBC
Checked: MTS
Scale: 1/8" = 1'-0"

© 2020 Strohmeier Architects, Inc.

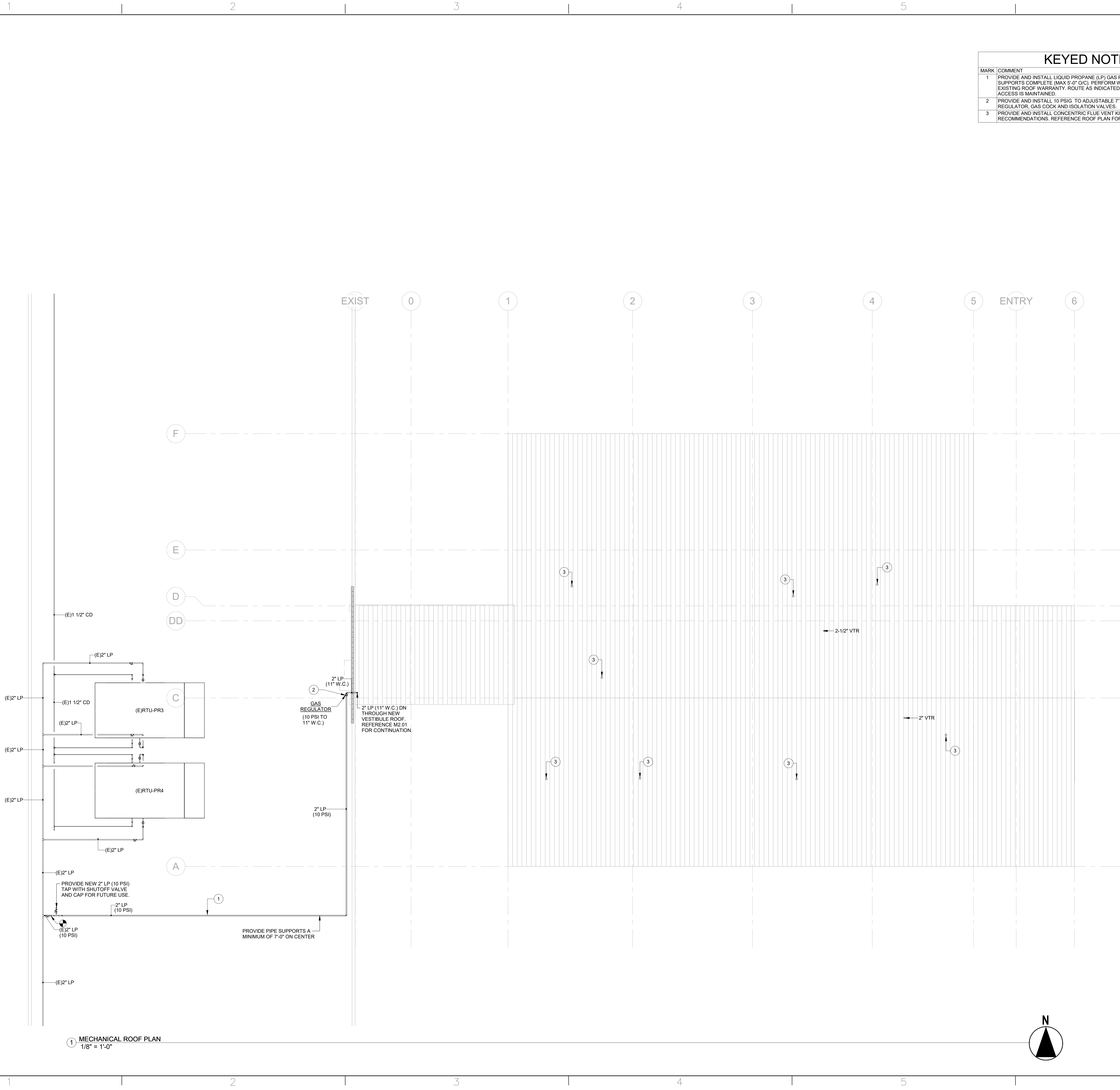
Revisions:

#	Revision Date	Revision Description
1	17 AUG 2022	ISSUE FOR PERMIT
2	02 SEPT 2022	OWNER REVIEW

Sheet Title:

**MECHANICAL
PIPING FIRST
FLOOR PLAN**

M2.02



KEYED NOTES	
MARK	COMMENT
1	PROVIDE AND INSTALL LIQUID PROPANE (LP) GAS PIPING, HANGERS AND SUPPORTS COMPLETE (MAX 5'-0\"/>
2	PROVIDE AND INSTALL 10 PSIG TO ADJUSTABLE 7\"/>
3	PROVIDE AND INSTALL CONCENTRIC FLUE VENT KIT PER MANUFACTURER'S RECOMMENDATIONS. REFERENCE ROOF PLAN FOR TERMINATION.



STROHMEYER
ARCHITECTS INC.

ARCHITECT
STROHMEYER ARCHITECTS, INC.
2701 SUNSET RIDGE DR.
SUITE 607
ROCKWALL, TEXAS 75032

STRUCTURAL
DFW STRUCTURAL CONSULTING, INC.
12575 MILL RUN DRIVE
FRISCO, TEXAS 75035

MEP ENGINEERING
C1S GROUP, INC.
4231 SIGMA ROAD, #110
DALLAS, TEXAS 75244

c1s 4231 Sigma Road, Suite 110
Dallas, Texas 75244
Ph. 972-386-7005
Fax 972-386-7205
www.c1sinc.com

C1S Group, Inc.

C1S GROUP, INC.
THE SEAL APPEARING ON THIS DOCUMENT WAS AUTHORIZED BY MATTHEW TOWNSEND STRONG, NY P.E. #08484, ON THE DATE INDICATED. ALTERATION OF A SEALED DOCUMENT WITHOUT PROPER NOTIFICATION TO THE RESPONSIBLE ENGINEER IS AN OFFENSE UNDER THE ENGINEERING ACT. THE SEAL IS NOT VALID WITHOUT SIGNATURE.

FRITO-LAY

LIBERTY PLANT

PLANT ADDITION
89 MILL ST
LIBERTY, NY 12754

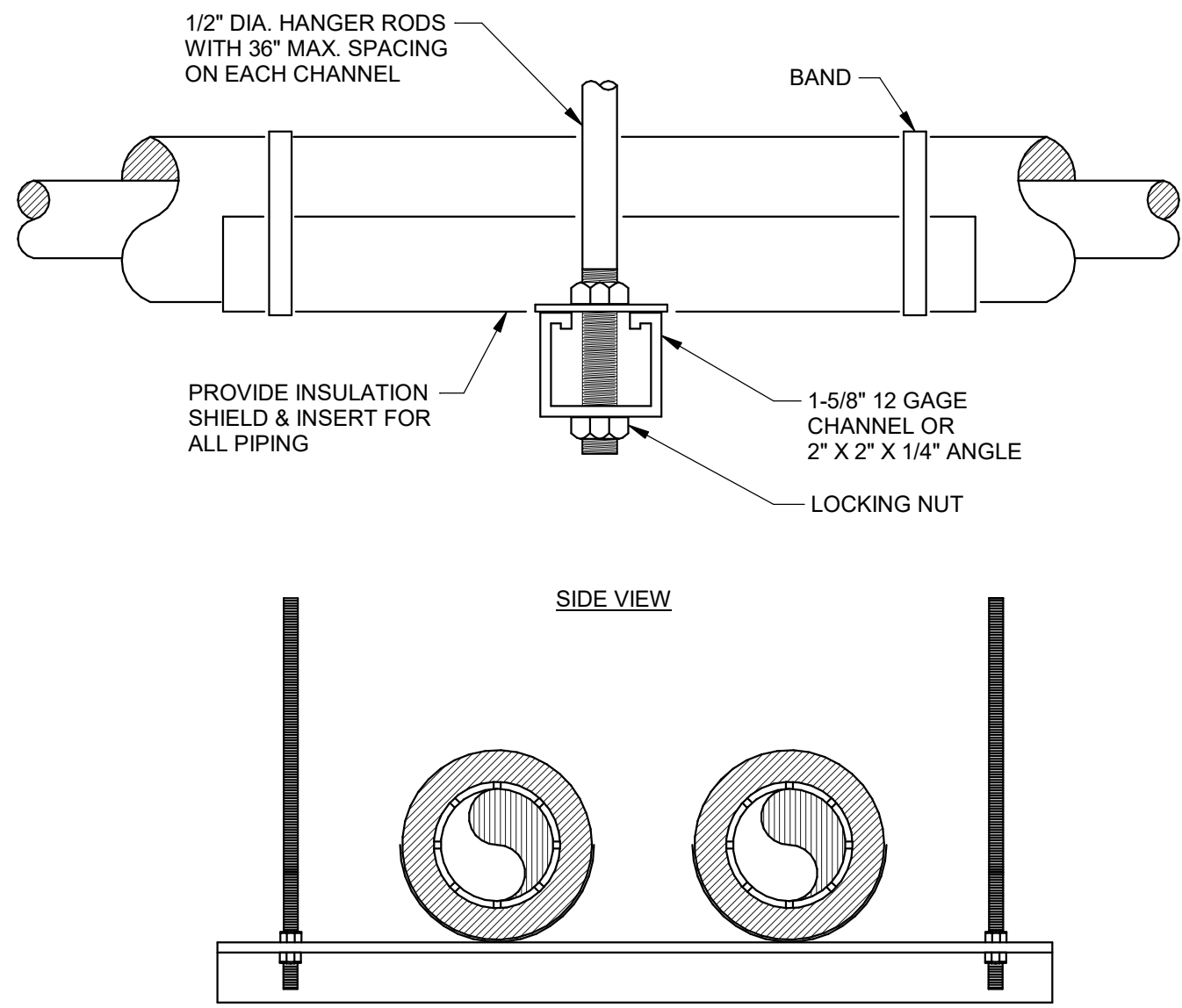
Project Number: 2021-213
Drawing Date: 17 AUG 2022
Drawn: CBC
Checked: MTS
Scale: 1/8" = 1'-0"

© 2020 Strohmeier Architects, Inc.

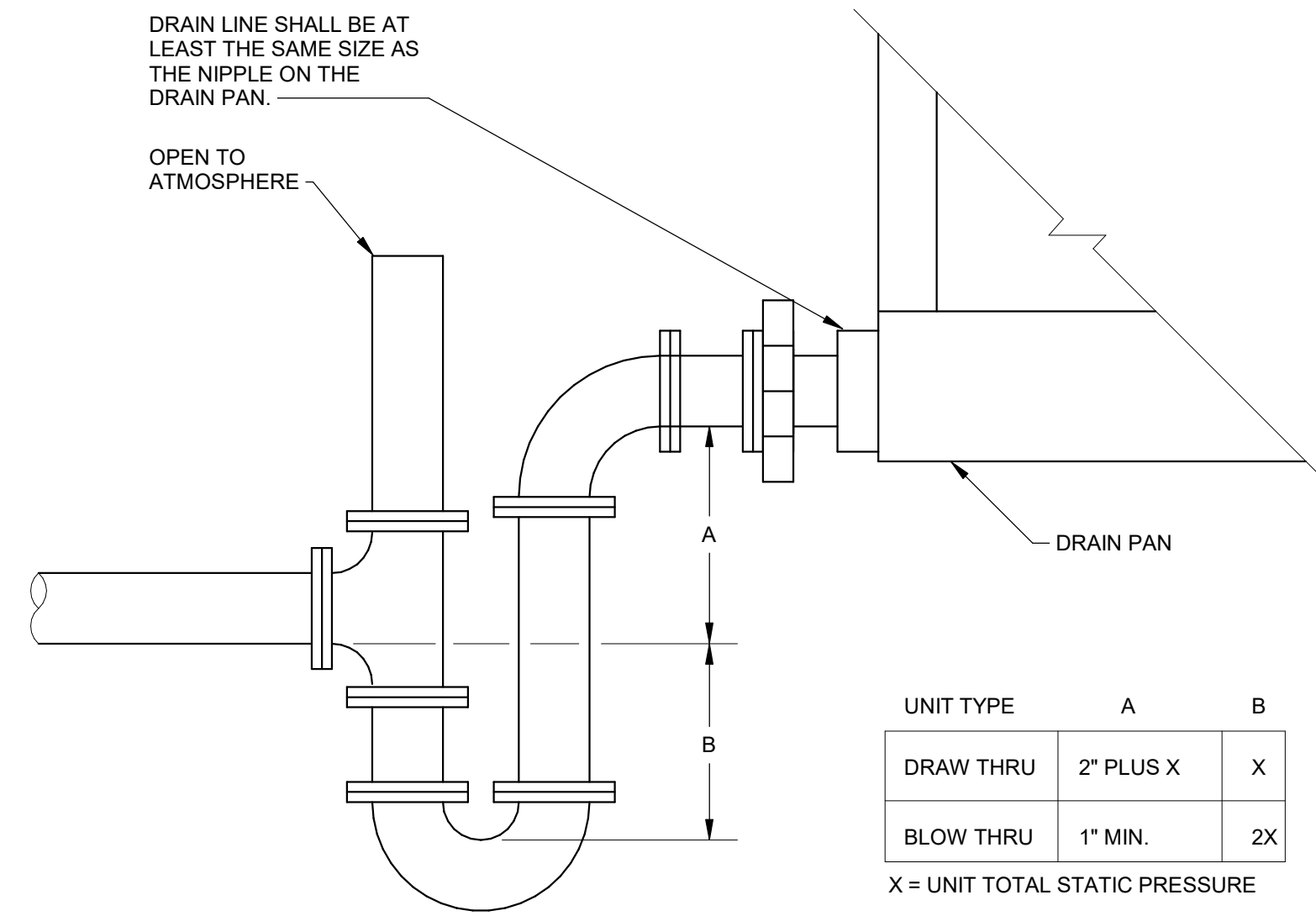
#	Revision Date	Revision Description
1	17 AUG 2022	ISSUE FOR PERMIT
2	02 SEPT 2022	OWNER REVIEW

Sheet Title:
**MECHANICAL
ROOF PLAN**

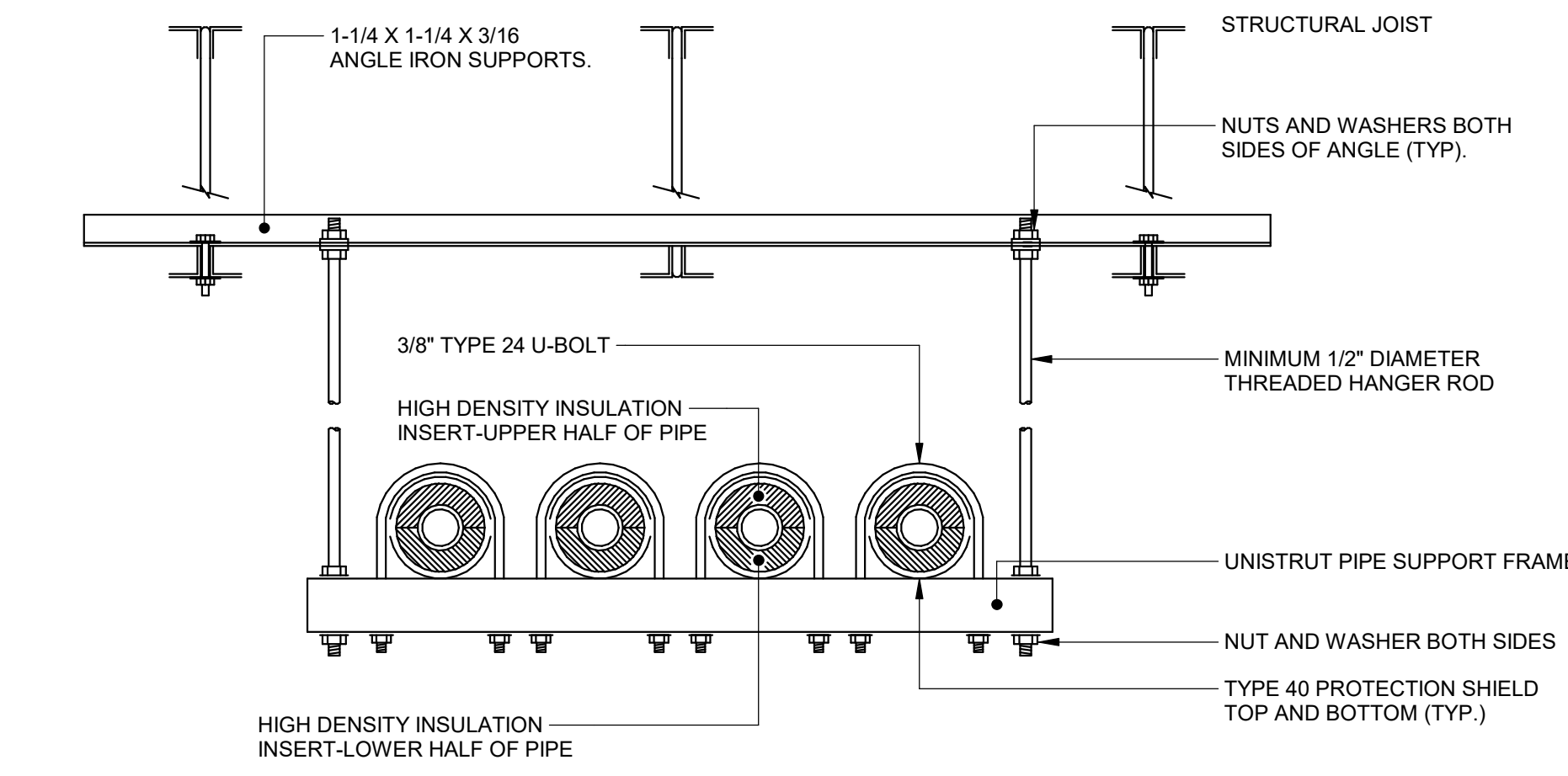
9/2/2022 10:32:39 AM



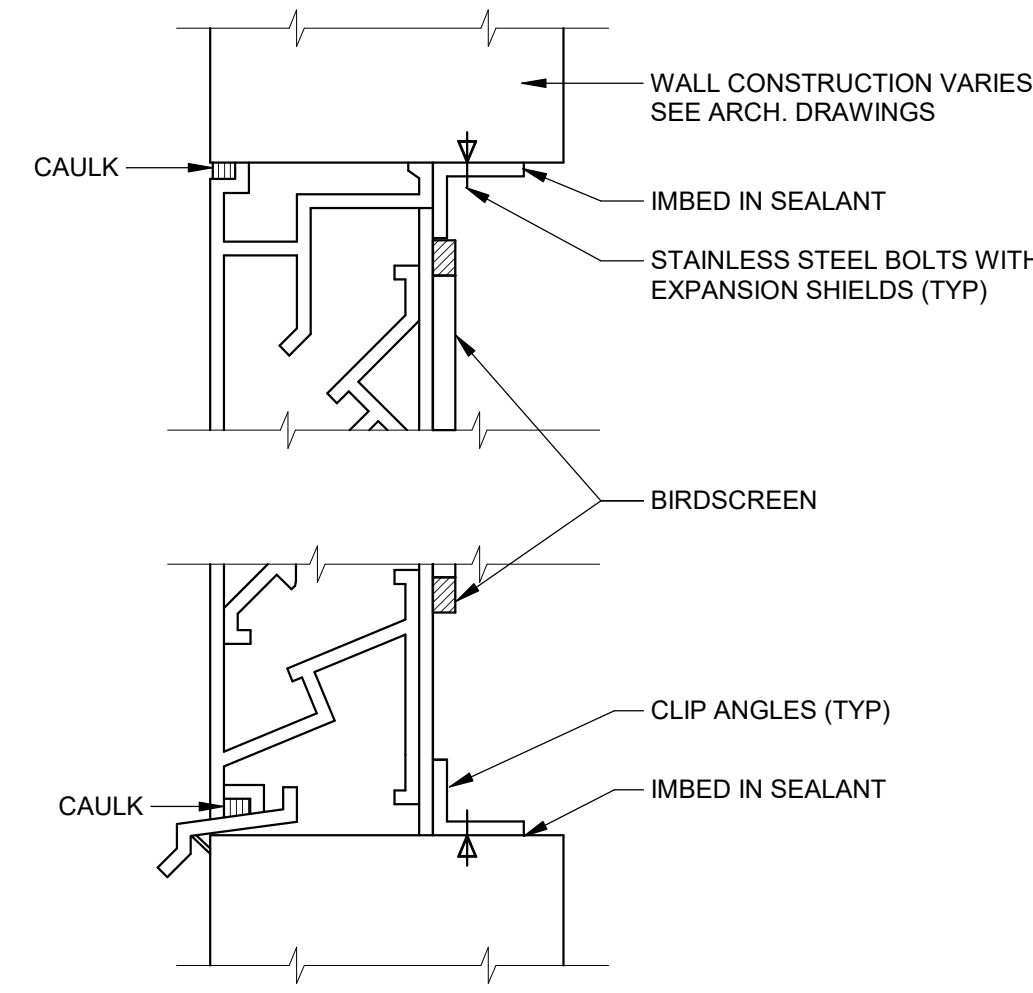
15 TRAPEZE PIPE HANGER DETAIL NTS



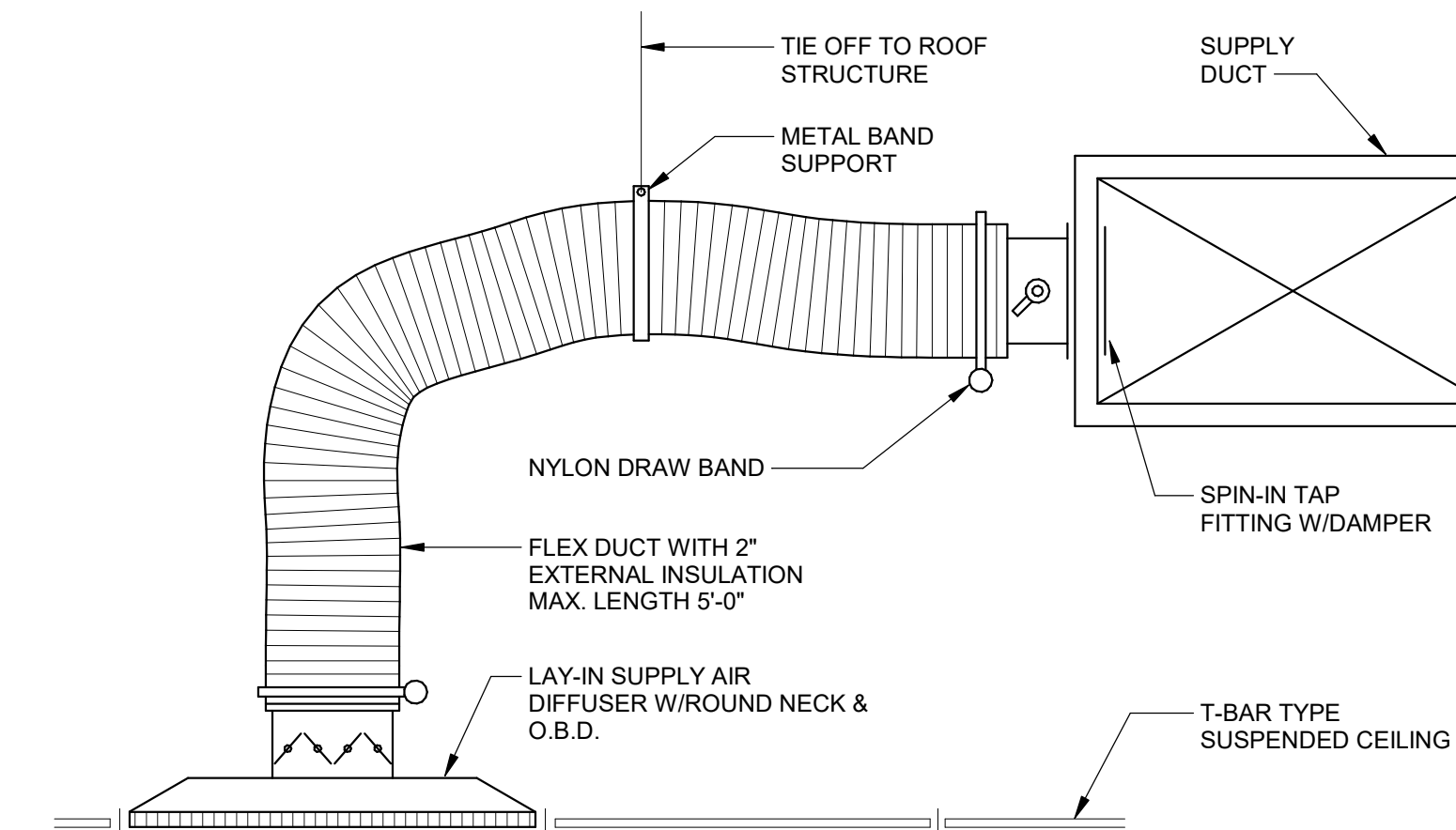
12 CONDENSATE DRAIN TRAP DETAIL NTS



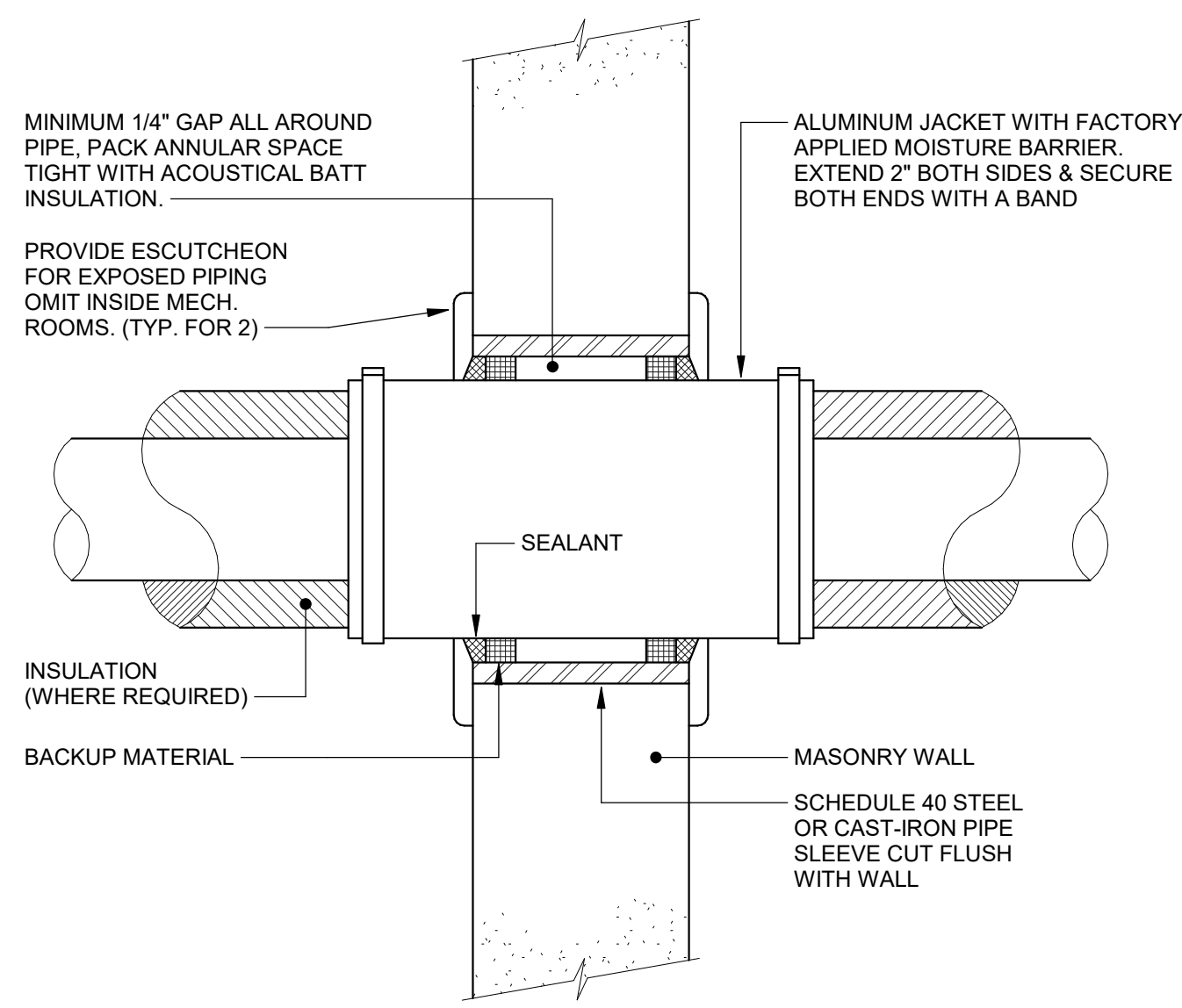
14 HORIZONTAL PIPE SUPPORT DETAIL NTS



11 TYPICAL LOUVER DETAIL NTS

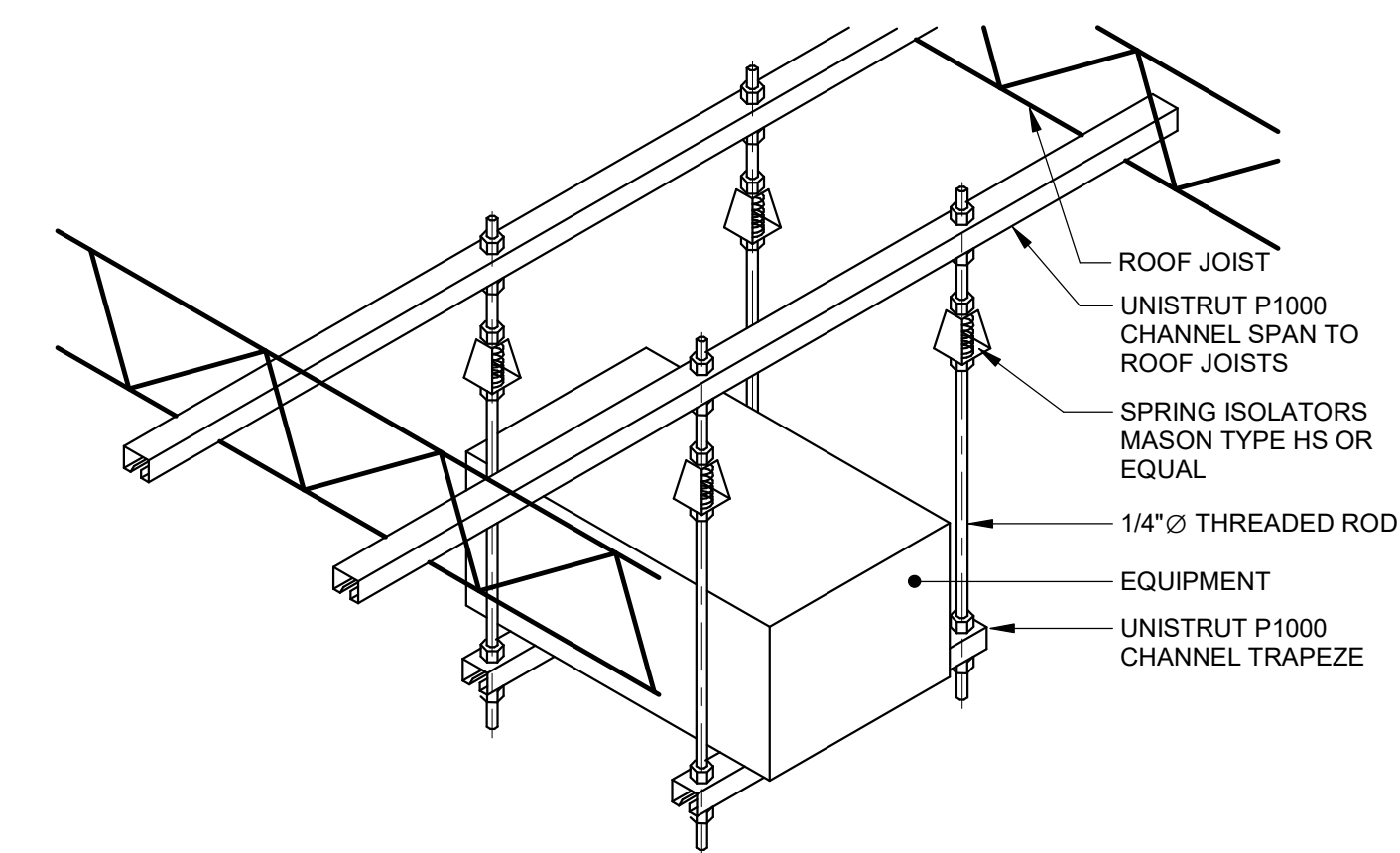


10 SUPPLY AIR DIFFUSER DETAIL NTS

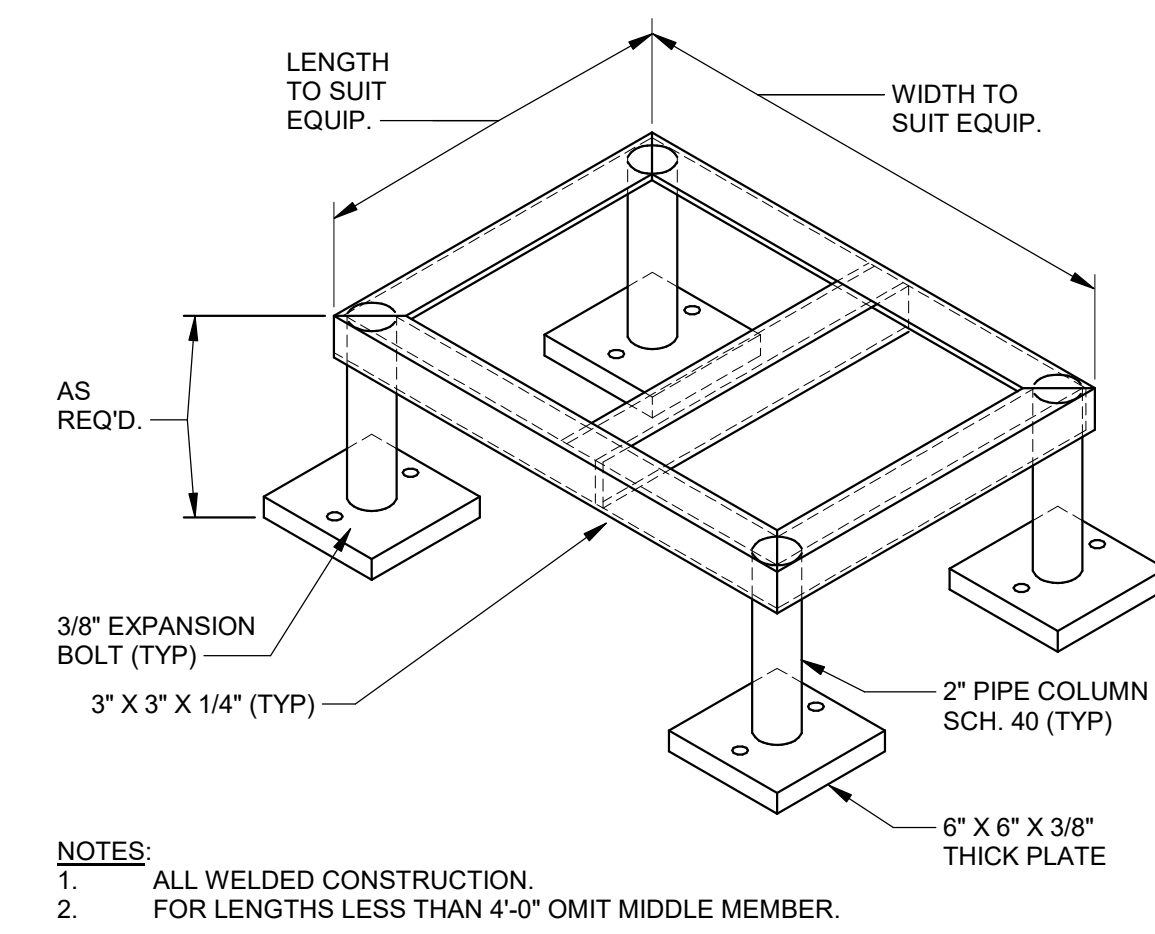


- NOTES:
- FOR GYP. BOARD WALLS PROVIDE MIN. 16 GAGE GALV. STEEL SLEEVE W/ LOCK-TYPE LONGITUDINAL SEAM.
 - OMIT ALUMINUM JACKET IF PIPING IS UNINSULATED.

13 WALL PIPE PENETRATION DETAIL NTS

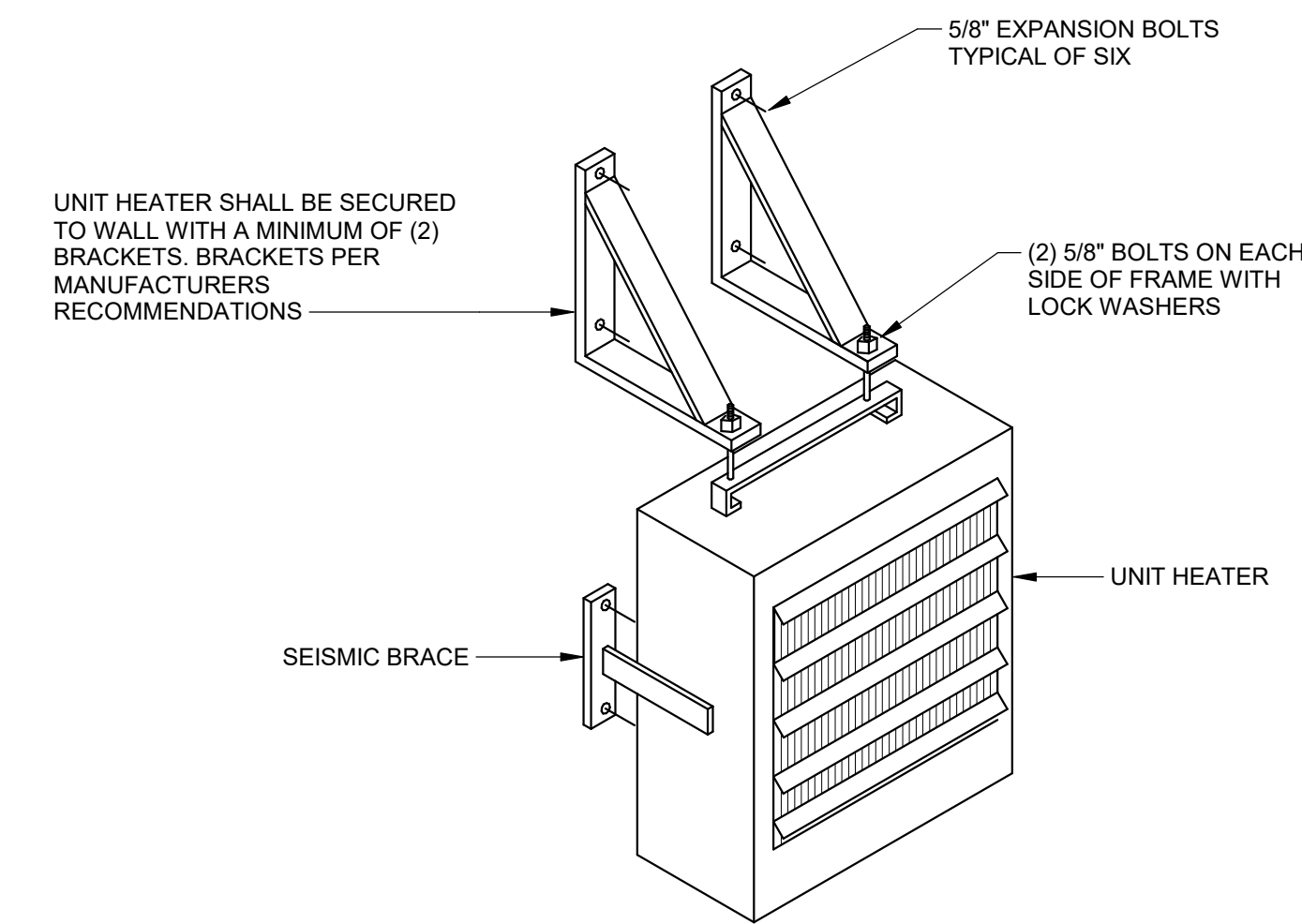


9 SUSPENDED EQUIPMENT DETAIL NTS

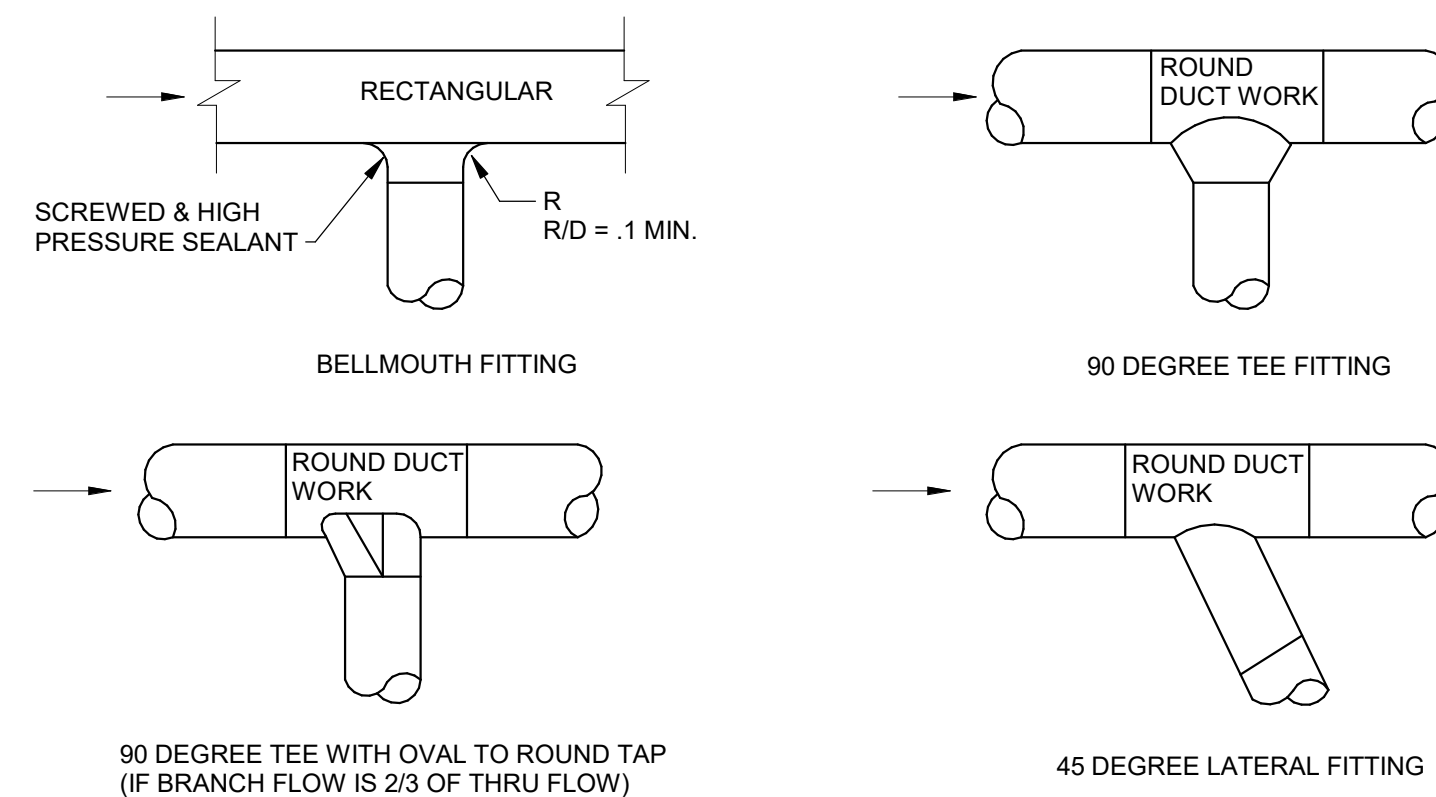


- NOTES:
- ALL WELDED CONSTRUCTION.
 - FOR LENGTHS LESS THAN 4'-0" OMIT MIDDLE MEMBER.

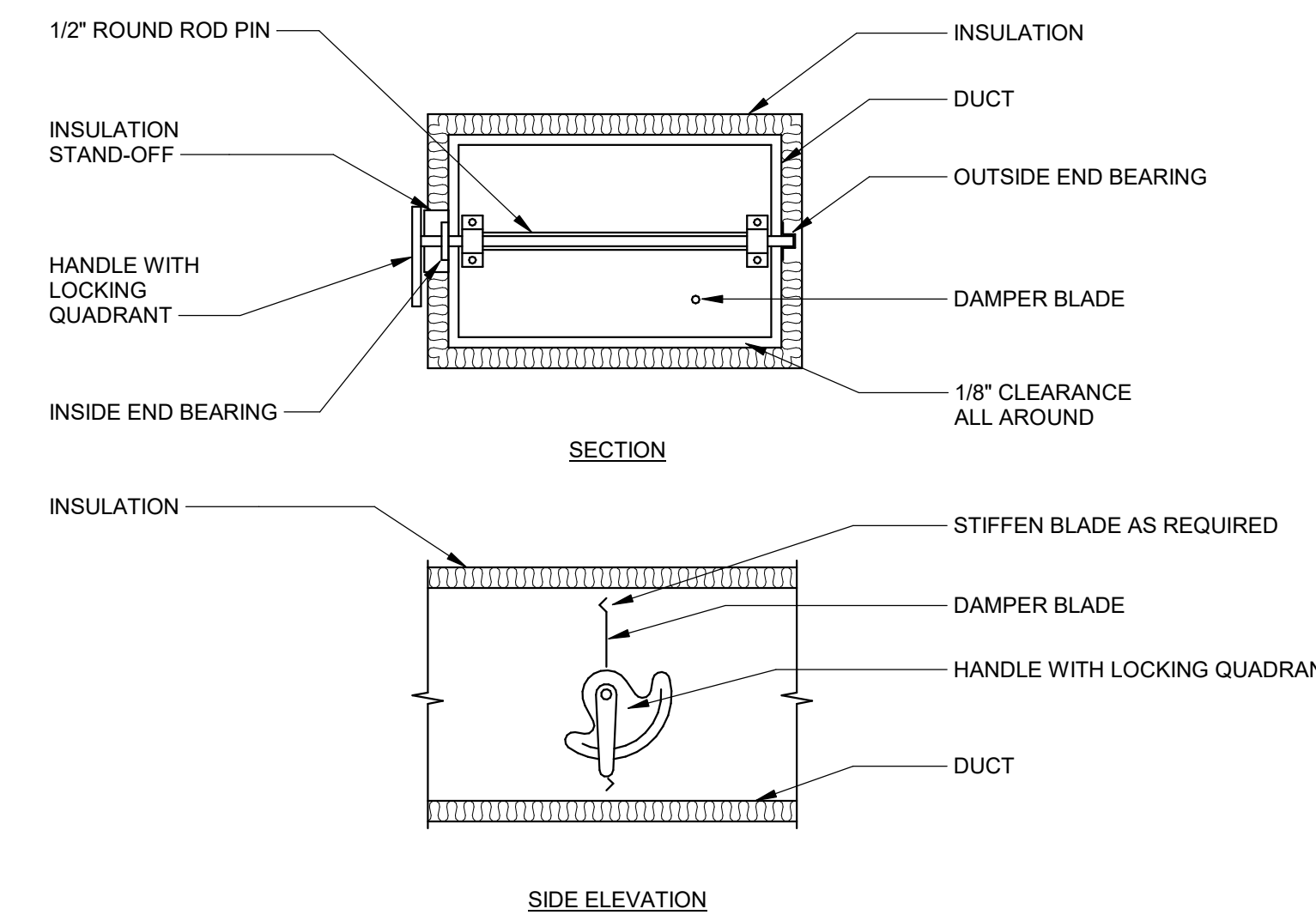
8 SUPPORT FRAME DETAIL NTS



7 ELECTRIC UNIT HEATER DETAIL NTS

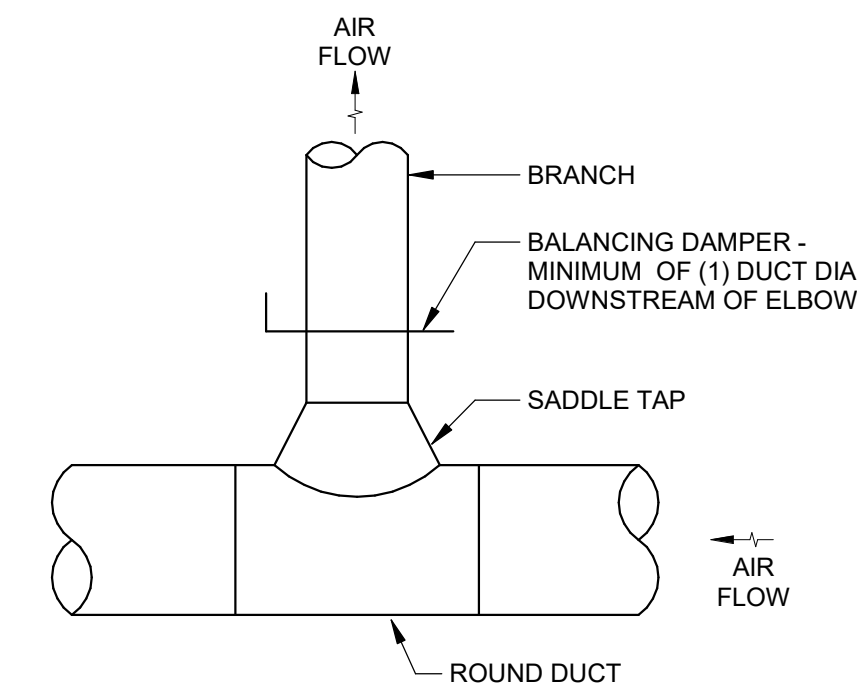


6 ROUND DUCTWORK FITTINGS DETAIL NTS

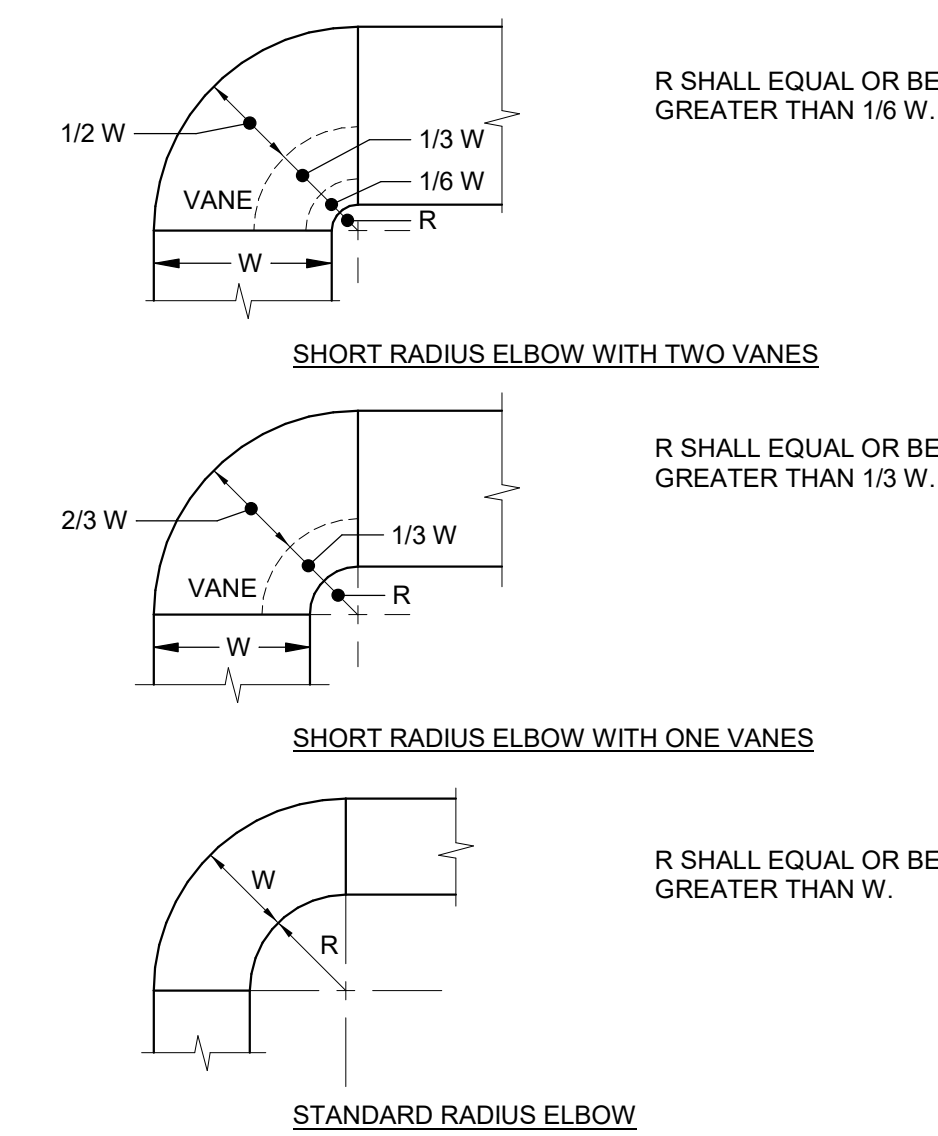


- NOTE:
- DELETE INSULATION STAND-OFF ON DUCTWORK WITHOUT EXTERIOR INSULATION.

5 VOLUME DAMPER DETAIL NTS

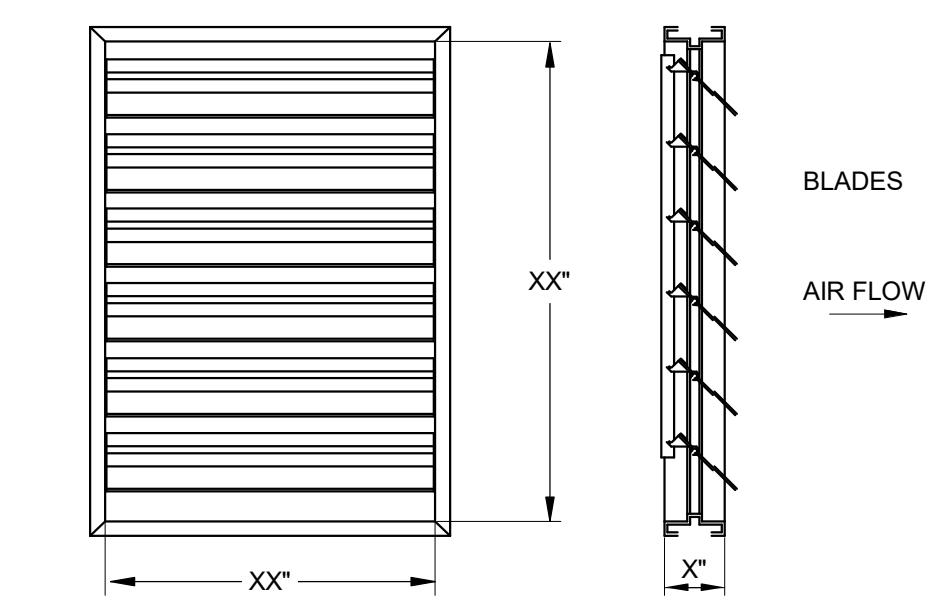


3 ROUND DUCT CONNECTION DETAIL NTS



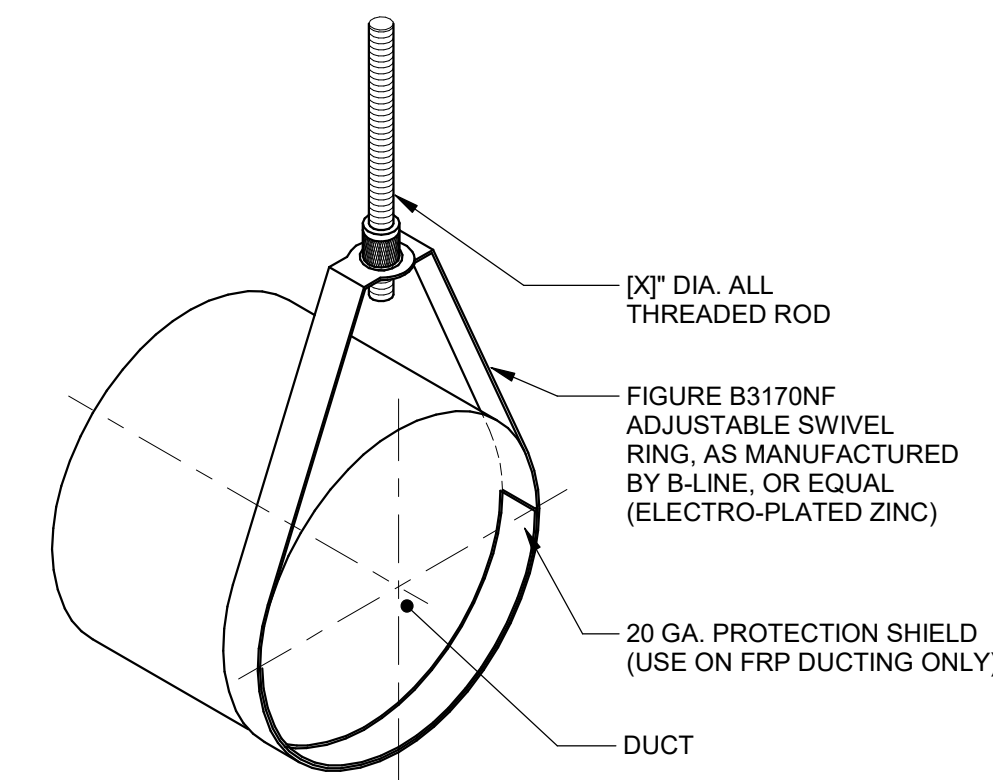
- NOTES:
- THE INTERIOR SURFACE OF ALL RADIUS ELBOWS SHALL BE MADE ROUND.
 - ALL STANDARD RADIUS ELBOWS SHOWN ON PLANS MAY BE MADE SHORT RADIUS ELBOWS. ALL SHORT RADIUS ELBOWS SHALL HAVE VANES. VANES SHALL BE CONSTRUCTED, SUPPORTED AND FASTENED AS RECOMMENDED BY SMACNA.

4 RADIUS ELBOWS DETAIL NTS



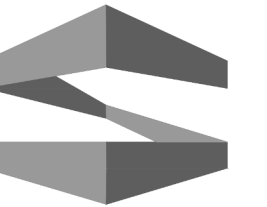
- NOTE:
- HOLD FOR VENDOR INFORMATION.
 - TOTAL QTY. - X (XXXXX) PER FAN TOWER. STAINLESS STEEL BLADE AXLES AND SINTERED PHOSPHOR BRONZE BEARINGS. BLADES AND FRAME TO BE EXTRUDED ALUMINUM CONSTRUCTION, NATURAL ANODIZED AFTER FABRICATION, WIPE AND CLEANED WITH IPA, VACUUMED, PLASTIC WRAPPED, AND DELIVERED TO SITE.

2 BACKDRAFT DAMPER DETAIL NTS



NOTE: FOR DUCT SIZES 8" AND SMALLER

1 ADJUSTABLE SWIVEL RING DUCT SUPPORT DETAIL NTS



STROHMEYER
ARCHITECTS INC.

ARCHITECT
STROHMEYER ARCHITECTS, INC.
2701 SUNSET RIDGE DR.
SUITE 607
ROCKWALL, TEXAS 75032

STRUCTURAL
DFW STRUCTURAL CONSULTING, INC.
12575 MILL RUN DRIVE
FRISCO, TEXAS 75035

MEP ENGINEERING
C1S GROUP, INC.
4231 SIGMA ROAD, #110
DALLAS, TEXAS 75244

c1s
C1S Group, Inc.
4231 Sigma Road, Suite 110
Dallas, Texas 75244
Ph. 972-386-7005
Fax 972-386-7205
www.c1sinc.com

C1S GROUP, INC.
THE SEAL APPEARING ON THIS DOCUMENT WAS AUTHORIZED BY MATTHEW TOWNSEND STRONG, NY P.E. #08484, ON THE DATE INDICATED. ALTERATION OF A SEALED DOCUMENT WITHOUT PROPER NOTIFICATION TO THE RESPONSIBLE ENGINEER IS AN OFFENSE UNDER THE ENGINEERING ACT. THE SEAL IS NOT VALID WITHOUT SIGNATURE.

FRITO-LAY LIBERTY PLANT

PLANT ADDITION
89 MILL ST
LIBERTY, NY 12754

Project Number: 2021-213
Drawing Date: 17 AUG 2022
Drawn: CBC
Checked: MTS
Scale: NTS

© 2020 Strohmeier Architects, Inc.

Revisions:

#	Revision Date	Revision Description
1	17 AUG 2022	ISSUE FOR PERMIT
2	02 SEPT 2022	OWNER REVIEW

Sheet Title:

MECHANICAL DETAILS

SPLIT SYSTEM AIR CONDITIONER SCHEDULE - (DX COOLING / LP GAS HEATING)

TAG	SERVES	CONDENSING UNIT										FURNACE										DX COIL		MANUFACTURER	REMARKS				
		TOTAL CAP (MBH)	SENSIBLE CAP (MBH)	COOLING STAGES	REFRIGERANT SIZES (RS / RL)	WEIGHT	VOLTS	PHASE	MCA	MOCP	MODEL	SUPPLY AIR CFM	OUTSIDE AIR CFM	ESP (IN WG)	INPUT MBH	OUTPUT MBH	TEMP RISE RANGE	AFUE	HEATING STAGES	FURNACE WEIGHT	VOLTS	PHASE	MCA			MOCP	MODEL	WEIGHT	
CU-1	LUNCH ROOM	63.0	48.5	1	1-1/8" / 3/8"	218	460	3	10.7	15	TSAO60S4	2,000	340	0.5	132	106	35-65F	80%	2	188	120	1	<12	15	EL280UH-135P60D	76	CX34-62D-6F	LENNOX	SEE NOTES
CU-2	LUNCH ROOM/VENDING	63.0	48.5	1	1-1/8" / 3/8"	218	460	3	10.7	15	TSAO60S4	2,000	325	0.5	132	106	35-65F	80%	2	188	120	1	<12	15	EL280UH-135P60D	76	CX34-62D-6F	LENNOX	SEE NOTES
CU-3	TRAINING WEST	50.0	40.0	1	7/8" / 3/8"	194	460	3	8.8	15	TSAO48S4	1,600	275	0.5	110	86	35-65F	80%	2	161	120	1	<12	15	EL280UH-110P48C	72	CX34-49C-6F	LENNOX	SEE NOTES
CU-4	TRAINING MID	63.0	48.5	1	1-1/8" / 3/8"	218	460	3	10.7	15	TSAO60S4	2,000	335	0.5	132	106	35-65F	80%	2	188	120	1	<12	15	EL280UH-135P60D	76	CX34-62D-6F	LENNOX	SEE NOTES
CU-5	TRAINING EAST	50.0	40.0	1	7/8" / 3/8"	194	460	3	8.8	15	TSAO48S4	1,600	280	0.5	110	86	35-65F	80%	2	161	120	1	<12	15	EL280UH-110P48C	72	CX34-49C-6F	LENNOX	SEE NOTES
CU-6	MEN'S LOCKER/RR	50.0	40.0	1	7/8" / 3/8"	194	460	3	8.8	15	TSAO48S4	1,600	250	0.5	110	86	35-65F	80%	2	161	120	1	<12	15	EL280UH-110P48C	72	CX34-49C-6F	LENNOX	SEE NOTES
CU-7	WOMEN'S LOCKER/RR	36.8	29.1	1	7/8" / 3/8"	135	460	3	7.8	15	TSAO36S4	1,200	155	0.5	88	70	35-65F	80%	2	141	120	1	<12	15	EL280UH-090P36BE	51	CX34-38B-6F	LENNOX	SEE NOTES
CU-8	CENTRAL CORRIDOR	36.8	29.1	1	7/8" / 3/8"	135	460	3	7.8	15	TSAO36S4	1,200	155	0.5	88	70	35-65F	80%	2	141	120	1	<12	15	EL280UH-090P36BE	51	CX34-38B-6F	LENNOX	SEE NOTES

1. MOUNT CONDENSING UNITS ON 4-INCH THICK CONCRETE HOUSEKEEPING PADS. MOUNT INDOOR AIR HANDLING UNITS FROM STRUCTURE ABOVE WITH SPRING ISOLATOR HANGERS.
2. PROVIDE DUCT SMOKE DETECTORS IN RETURN AIR SECTION ON ALL AIR HANDLING UNITS AND TIE INTO BUILDING FIRE ALARM SYSTEM. UPON DETECTION OF SMOKE IN THE RETURN AIR, THE UNIT SHALL SHUT DOWN.
3. PROVIDE MANUFACTURER'S SMART THERMOSTAT WITH AUTO-CHANGEOVER. UNIT FANS SHALL RUN CONTINUOUSLY TO PROVIDE APPROPRIATE OUTSIDE AIR TO THE SPACE AND COMPRESSORS SHALL CYCLE TO MAINTAIN SPACE TEMPERATURE SETPOINTS OF 75F COOLING AND 70F HEATING.
4. MAINTAIN MANUFACTURER'S SERVICE CLEARANCES FOR CONDENSING UNITS, FURNACES AND COOLING COILS.
5. PROVIDE CONCENTRIC VENT KIT FLUE DUCT FOR EACH FURNACE AND ROUTE UP THROUGH ROOF. FLASH ROOF WATER-TIGHT AT EACH ROOF PENETRATION.
6. PROVIDE 2" DEEP EMERGENCY DRAIN PAN BELOW COOLING COIL. EXTEND PAN 2" ON ALL DIMENSIONS OF COOLING COIL AND PROVIDE WITH MOISTURE SENSOR TO SHUTOFF UNIT ON DETECTION OF OVERFLOW CONDENSATE.

EXHAUST FAN SCHEDULE

TAG	LOCATION	FAN TYPE	CFM	ESP (IN WG)	DRIVE	HP	VOLTS	PHASE	BASIS OF DESIGN		REMARKS
									MANUFACTURER	MODEL NO	
EF-1	ELECTRICAL ROOM	CENTRIFUGAL SQUARE INLINE	350	0.5	DIRECT	1/6	120	1	LOREN COOK	120SON11D OR91	SEE NOTES
EF-2	WOMEN'S LOCKER/RR	CENTRIFUGAL SQUARE INLINE	350	0.5	DIRECT	1/6	120	1	LOREN COOK	120SON11D OR91	SEE NOTES
EF-3	MEN'S LOCKER/RR	CENTRIFUGAL SQUARE INLINE	475	0.5	DIRECT	1/6	120	1	LOREN COOK	135SON11D OR91	SEE NOTES

1. MOUNT EXHAUST FANS FROM STRUCTURE ABOVE AND PROVIDE WITH SPRING ISOLATOR SUPPORTS.
2. EF-1 SHALL BE PROVIDED WITH A ROOM THERMOSTAT TO ENERGIZE FAN ONCE SPACE TEMPERATURE REACHES 80F AND SHALL DE-ENERGIZE UPON A SPACE TEMPERATURE OF 78F.
3. EF-2 AND EF-3 SHALL RUN CONTINUOUSLY.

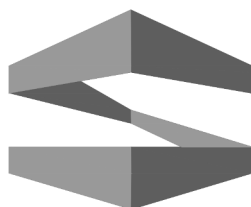
UNIT HEATER SCHEDULE - ELECTRIC

TAG	KW	CFM	ELECTRICAL DATA	BASIS OF DESIGN		REMARKS
				VOLTS	PHASE	
UH-1	3.0	350	480	3	QMARK	MUH0341-PRO
1.	MOUNT UNIT HEATER FROM WALL WITH MANUFACTURER'S WALL MOUNT.					
2.	UNIT HEATER SHALL BE PROVIDED WITH SPACE THERMOSTAT TO MAINTAIN AT LEAST 45F.					

GRILLE, REGISTER & DIFFUSER SCHEDULE

TAG	TYPE	SERVICE	CFM RANGE	NECK SIZE	MAX PD	MANUFACTURER/ MODEL NO	DESCRIPTION	REMARKS
S1	CEILING DUCTED	SUPPLY	AS NOTED	10"ø	0.1	PRICE / ASCD	24"x24" SQUARE CONE DIFFUSER	SEE NOTES
S2	CEILING DUCTED	SUPPLY	AS NOTED	6"ø	0.1	PRICE / ASCD	24"x24" SQUARE CONE DIFFUSER	SEE NOTES
S3	CEILING DUCTED	SUPPLY	AS NOTED	8"ø	0.1	PRICE / ASCD	24"x24" SQUARE CONE DIFFUSER	SEE NOTES
S4	CEILING DUCTED	SUPPLY	40	6"ø	0.1	PRICE / ASCD	12"x12" SQUARE CONE DIFFUSER	SEE NOTES
S5	SIDEWALL	SUPPLY	50	6"x6"	0.1	PRICE / 610	SIDEWALL LOUVERED GRILLE	SEE NOTES
S6	SIDEWALL	SUPPLY	250	10"x10"	0.1	PRICE / 610	SIDEWALL LOUVERED GRILLE	SEE NOTES
R1	CEILING DUCTED	RETURN	AS NOTED	16"ø	0.1	PRICE / 630	24"x24" RETURNEXHAUST LOUVERED GRILLE	SEE NOTES
R2	CEILING DUCTED	RETURN	AS NOTED	8"ø	0.1	PRICE / 630	24"x24" RETURNEXHAUST LOUVERED GRILLE	SEE NOTES
R3	CEILING DUCTED	RETURN	AS NOTED	10"ø	0.1	PRICE / 630	24"x24" RETURNEXHAUST LOUVERED GRILLE	SEE NOTES
R4	CEILING DUCTED	RETURN	AS NOTED	6"ø	0.1	PRICE / 630	12"x12" RETURNEXHAUST LOUVERED GRILLE	SEE NOTES
R5	SIDEWALL	RETURN	220	12"x12"	0.1	PRICE / 630	SIDEWALL RETURNEXHAUST LOUVERED GRILLE	SEE NOTES
R6	SIDEWALL	RETURN	45	6"x6"	0.1	PRICE / 630	SIDEWALL RETURNEXHAUST LOUVERED GRILLE	SEE NOTES
E1	CEILING DUCTED	EXHAUST	450	12"ø	0.1	PRICE / 630	24"x24" RETURNEXHAUST LOUVERED GRILLE	SEE NOTES
E2	CEILING DUCTED	EXHAUST	350	10"ø	0.1	PRICE / 630	24"x24" RETURNEXHAUST LOUVERED GRILLE	SEE NOTES
E3	CEILING DUCTED	EXHAUST	50	6"ø	0.1	PRICE / 630	12"x12" RETURNEXHAUST LOUVERED GRILLE	SEE NOTES
E4	SIDEWALL	EXHAUST	350	10"x8"	0.1	PRICE / 630	SIDEWALL RETURNEXHAUST LOUVERED GRILLE	SEE NOTES

1. PROVIDE ALUMINUM CONSTRUCTION ON ALL GRID.
2. PROVIDE OPPOSED BLADE DAMPERS ON ALL SIDEWALL GRILLES AND REGISTERS.



STROHMEYER
ARCHITECTS INC.

ARCHITECT
STROHMEYER ARCHITECTS, INC.
2701 SUNSET RIDGE DR.
SUITE 607
ROCKWALL, TEXAS 75032

STRUCTURAL
DFW STRUCTURAL CONSULTING, INC.
12575 MILL RUN DRIVE
FRISCO, TEXAS 75035

MEP ENGINEERING
C1S GROUP, INC.
4231 SIGMA ROAD, #110
DALLAS, TEXAS 75244

c1s 4231 Sigma Road, Suite 110
Dallas, Texas 75244
Ph. 972-386-7005
Fax 972-386-7205
www.c1sinc.com
C1S Group, Inc.

C1S GROUP, INC.

THE SEAL APPEARING ON THIS
DOCUMENT WAS AUTHORIZED BY
MATTHEW TOWNSEND STRONG,
NY P.E. #08484, ON THE DATE
INDICATED. ALTERATION OF A SEALED
DOCUMENT WITHOUT PROPER
NOTIFICATION TO THE RESPONSIBLE
ENGINEER IS AN OFFENSE UNDER THE
ENGINEERING ACT. THE SEAL IS NOT VALID
WITHOUT SIGNATURE.

FRITO-LAY

LIBERTY
PLANT

PLANT ADDITION
89 MILL ST
LIBERTY, NY 12754

Project Number: 2021-213
Drawing Date: 17 AUG 2022
Drawn: CBC
Checked: MTS
Scale:

© 2020 Strohmeier Architects, Inc.

Revisions:

#	Revision Date	Revision Description
1	17 AUG 2022	ISSUE FOR PERMIT
2	02 SEPT 2022	OWNER REVIEW

Sheet Title:

MECHANICAL
SCHEDULES

M5.00