





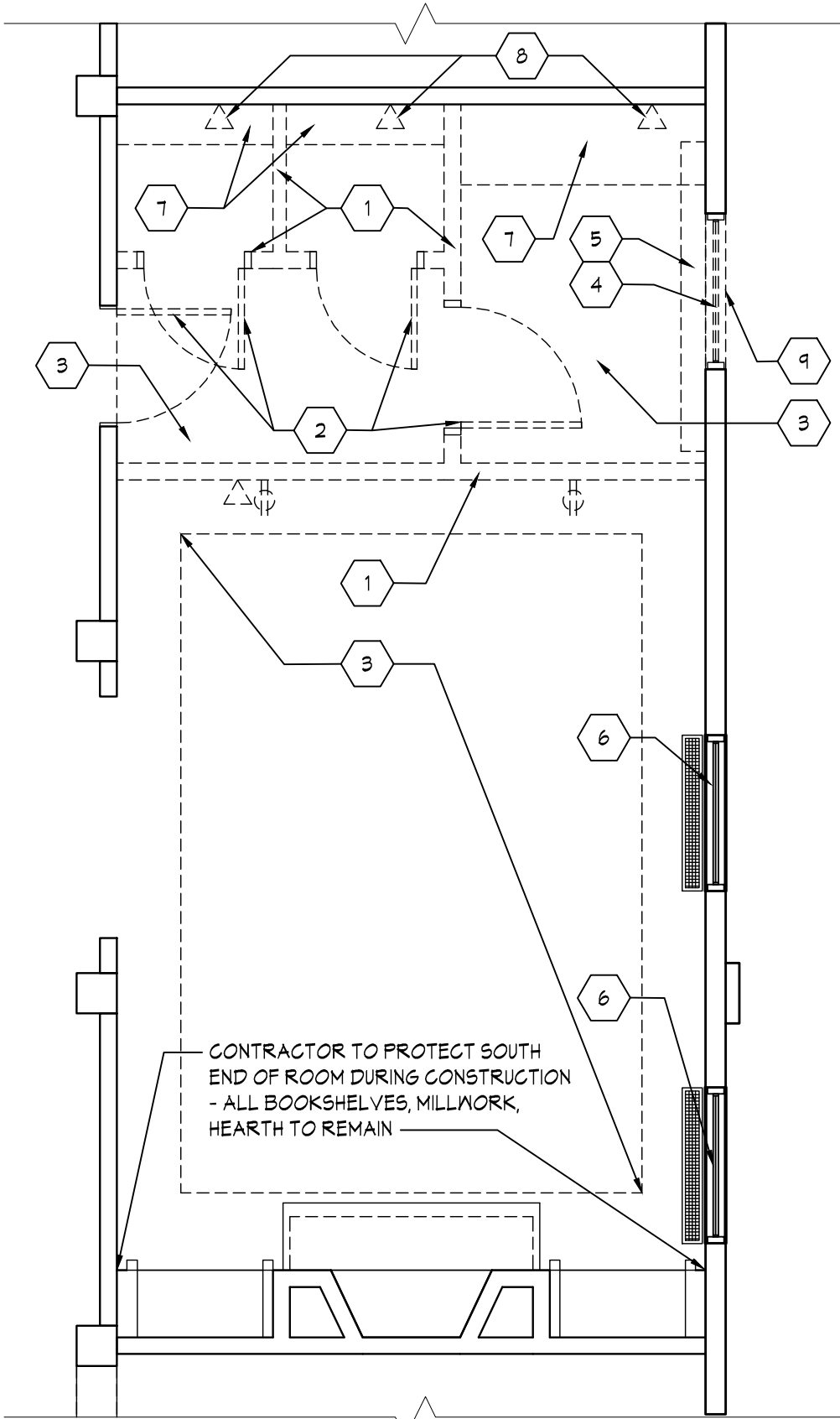
## REMOVAL GENERAL NOTES

- EXISTING LIFE SAFETY APPARATUS SHALL REMAIN INTACT AND ACTIVE DURING REMOVALS AND CONSTRUCTION UNTIL NEW DEVICES ARE INSTALLED AND ACTIVATED. ADJUST EXISTING DEVICES TO MAINTAIN PROTECTION. PROVIDE TEMPORARY SUPPORT FOR SMOKE DETECTORS AND EXIT SIGNS.
- COORDINATE AND CONDUCT REMOVALS PER BUILDING STANDARDS.
- COORDINATE REMOVALS WITH OWNER, ARCHITECT AND BUILDING DEPARTMENT HAVING JURISDICTION.
- PATCH ALL WALL AREAS AFFECTED BY REMOVALS. WORK TO MATCH ADJACENT SURFACES. NOT ALL PATCH AREAS ARE INDICATED.
- ELECTRICAL CONTRACTOR TO PROVIDE TEMPORARY LIGHTING TO ILLUMINATE SPACE PER LOCAL CODES.
- VERIFY ALL CONDITIONS AND LOCATIONS AFFECTING THE REMOVALS AND NEW WORK.
- NOTIFY THE ARCHITECT OF DISCREPANCIES THAT AFFECT THE WORK AND UNCOVERED AREAS FOR OBSERVATION PRIOR TO PROCEEDING WITH NEW WORK.
- REMOVE ALL EXISTING ELECTRICAL WIRING, NOT BEING USED BACK TO ITS SOURCE.
- REMOVE ALL EXISTING PIPING NOT BEING RE-USED BACK TO ITS SOURCE.
- G.G. SHALL COORDINATE ALL ELECTRICAL, PLUMBING, MECHANICAL AND FIRE PROTECTION DISCIPLINES WITH OWNERS SUB CONTRACTOR.
- EXISTING MILLWORK TO REMAIN IN SELECT AREAS WHERE NOT AFFECTED BY NEW WORK. EXISTING MILLWORK TO BE REMOVED TO ACHIEVE PROPOSED WORK. REFER TO PROPOSED INTERIOR ELEVATIONS FOR FINAL MILLWORK CONFIGURATION.

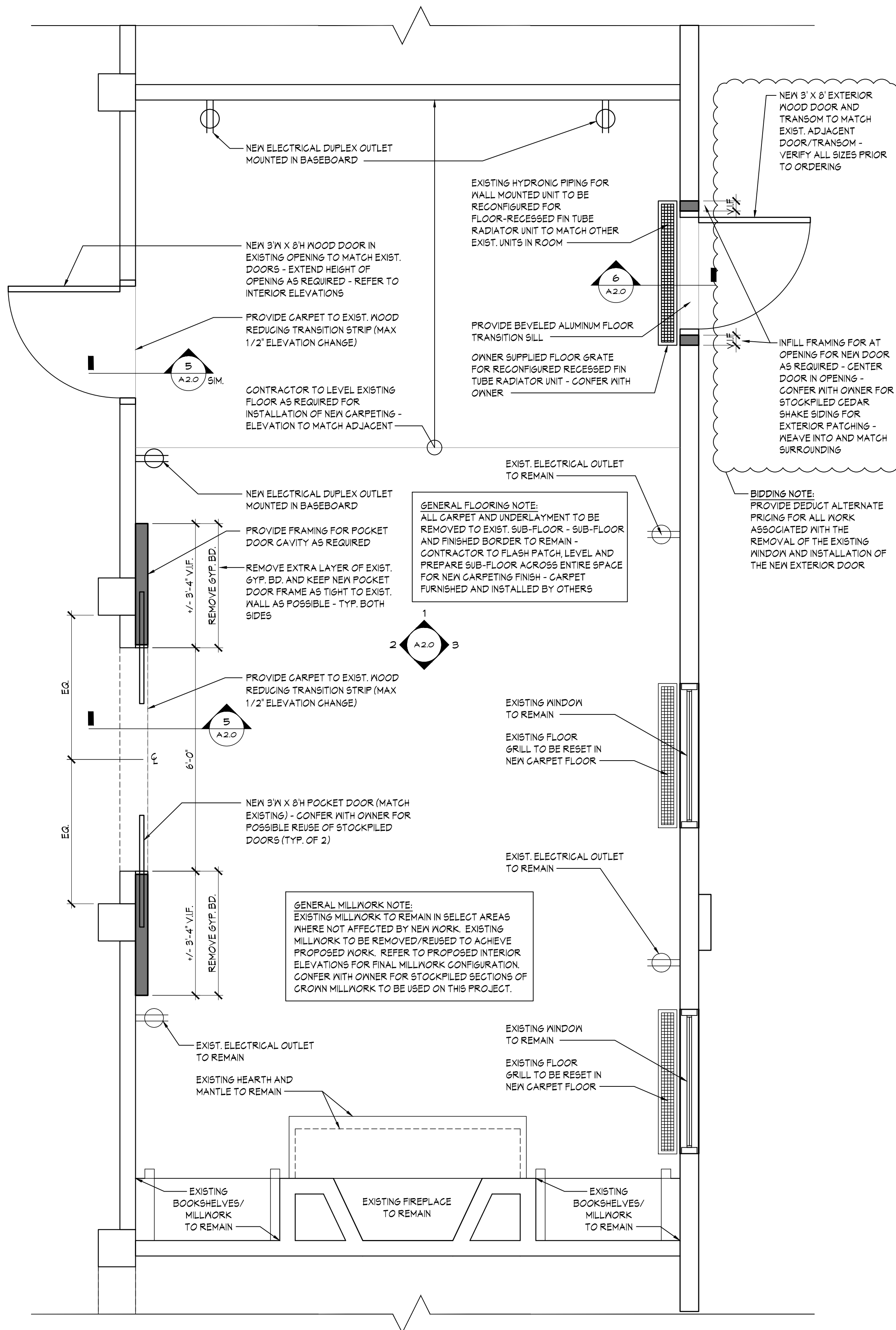
## REMOVAL WORK NOTES

DEMOLITION CONTRACTOR TO FURNISH AND INSTALL ALL LABOR AND MATERIALS TO DEMOLISH AND DISCARD THE FOLLOWING:

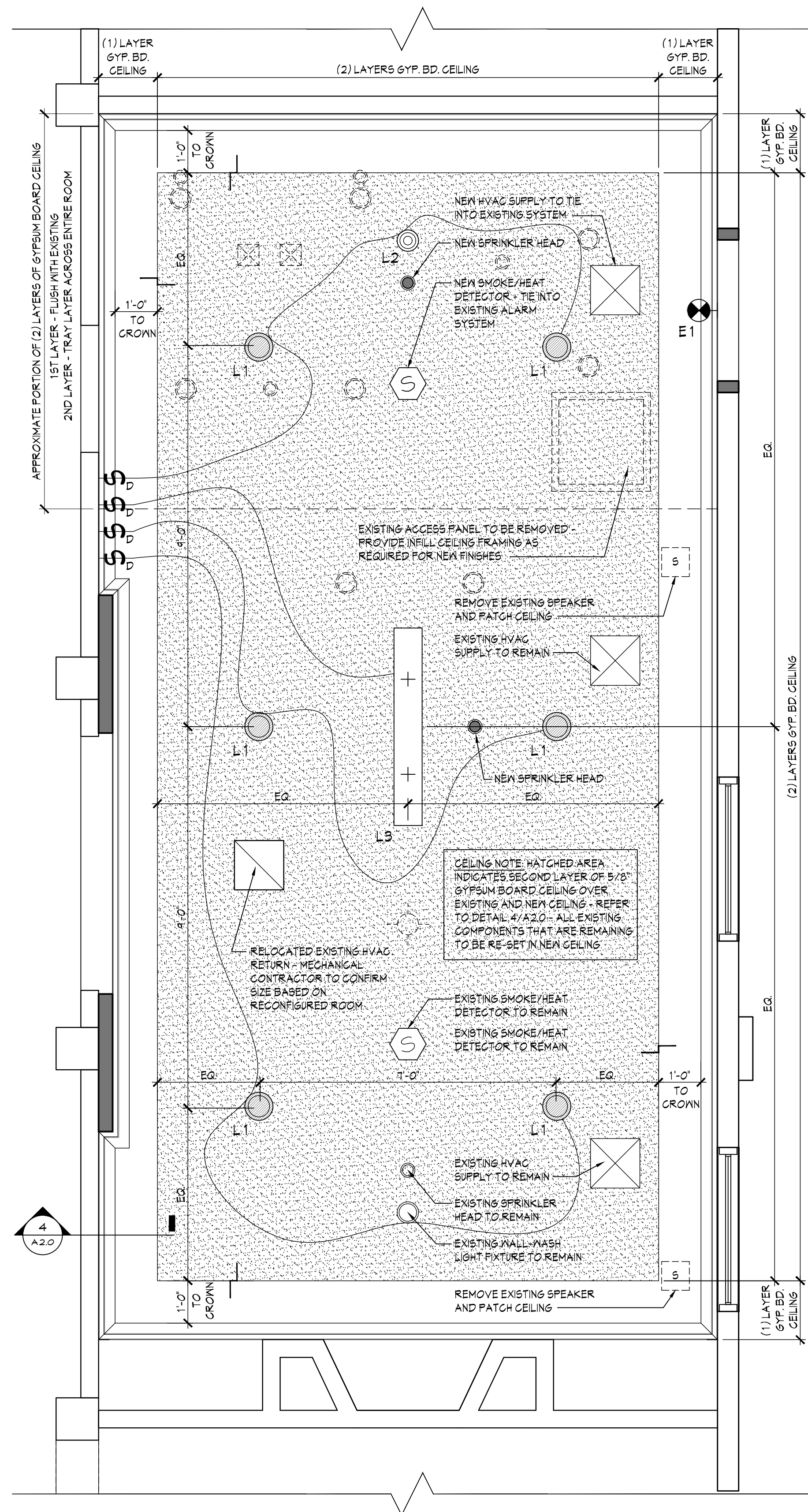
- REMOVE AND DISCARD EXISTING NON-LOAD BEARING PARTITIONS IN ITS ENTIRETY INCLUDING ALL DOORS, FRAMES AND ASSOCIATED HARDWARE AS INDICATED BY DASHED LINES. REMOVE ALL ELECTRICAL AND PLUMBING LINES BACK TO ITS SOURCE AND DISCARD. NOTIFY ARCHITECT OF ANY DISCREPANCIES. REFER TO CONSTRUCTION PLANS FOR EXTENT OF NEW WORK.
- REMOVE AND DISCARD EXISTING DOOR, FRAME AND ALL ASSOCIATED HARDWARE.
- REMOVE AND DISCARD EXISTING BUILT-IN CARPET/RUG AND ANY ASSOCIATED UNDERLAYMENT - SUB-FLOOR TO REMAIN - FINISHED WOOD BORDER TO REMAIN WHERE EXISTING.
- REMOVE AND DISCARD EXISTING WINDOW, FRAME AND ALL ASSOCIATED HARDWARE. REMOVE AND DISCARD PORTION OF WALL BELOW WINDOW DOWN TO FINISHED FLOOR. REFER TO CONSTRUCTION PLANS FOR EXTENT OF NEW WORK.
- REMOVE AND DISCARD EXIST. CONVECTOR, REFER TO CONSTRUCTION PLAN FOR RECONFIGURED UNIT.
- REMOVE EXIST. WINDOW SHADES, TREATMENTS AND ALL ASSOCIATED HARDWARE - CONFER WITH OWNER FOR REUSE.
- REMOVE AND DISCARD EXIST. COUNTER AND ALL ASSOCIATED SUPPORTS/HARDWARE.
- REMOVE AND DISCARD EXIST. PHONE TERMINAL AND CAP WIRING AT SOURCE.
- EXTERIOR LIGHT TO BE REMOVED.



1 DEMOLITION PLAN  
1/4" = 1'-0"



2 PROPOSED CONSTRUCTION PLAN  
1/2" = 1'-0"



3 PROPOSED REFLECTED CEILING PLAN  
1/2" = 1'-0"

## CONSTRUCTION GENERAL NOTES

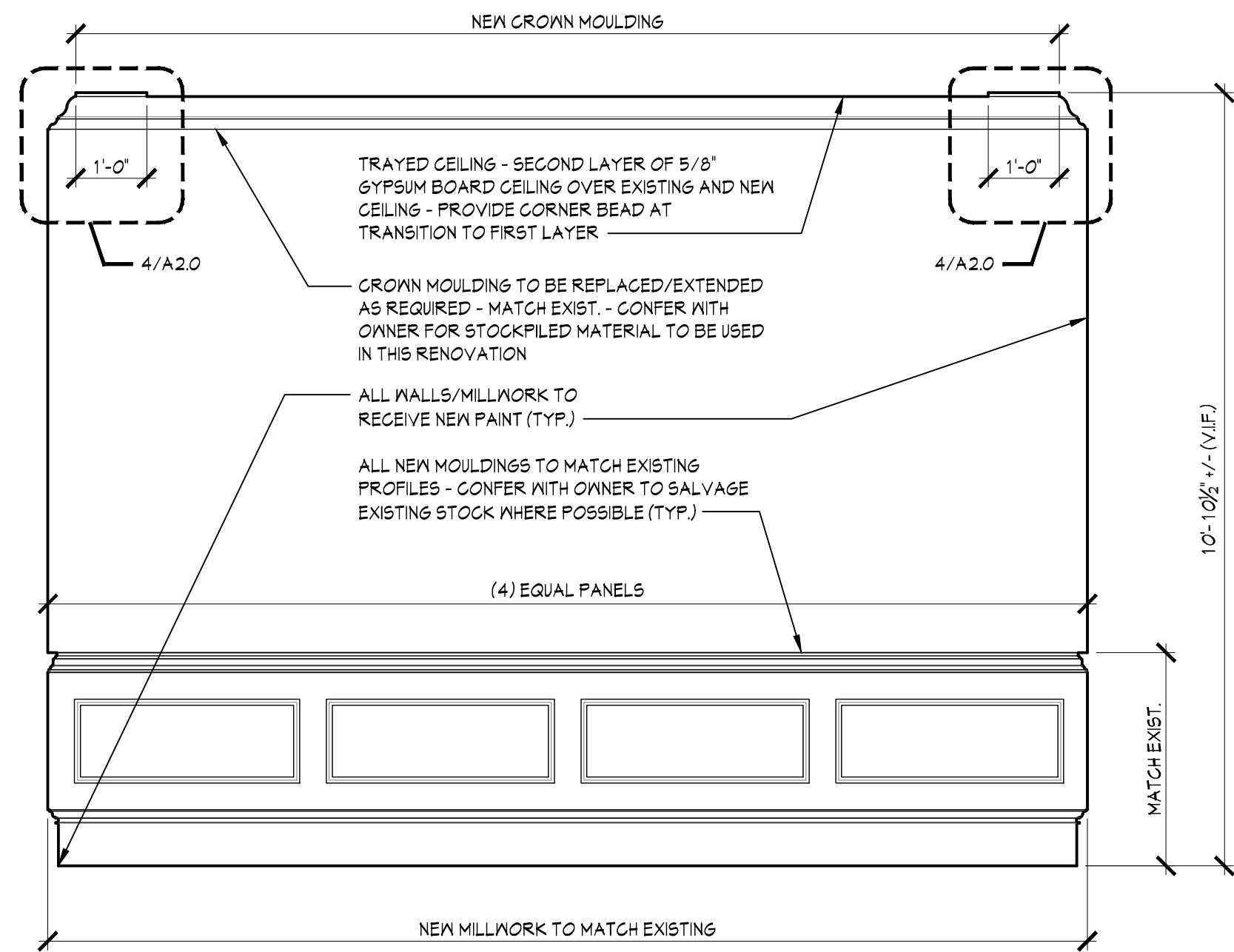
- NOTIFY THE ARCHITECT OF DISCREPANCIES THAT AFFECT THE WORK AND UNCOVERED AREAS FOR OBSERVATION PRIOR TO PROCEEDING WITH NEW WORK.
- PATCH ALL WALL AREAS AFFECTED BY REMOVALS. NOT ALL PATCH AREAS ARE INDICATED.
- EXISTING LIFE SAFETY APPARATUS SHALL REMAIN INTACT AND ACTIVE DURING REMOVALS AND CONSTRUCTION UNTIL NEW DEVICES ARE INSTALLED AND ACTIVATED. ADJUST EXISTING DEVICES TO MAINTAIN PROTECTION. PROVIDE TEMPORARY SUPPORT FOR SMOKE DETECTORS AND EXIT SIGNS.
- ELECTRICAL CONTRACTOR TO PROVIDE TEMPORARY LIGHTING TO ILLUMINATE SPACE PER LOCAL CODES.
- VERIFY ALL CONDITIONS AND LOCATIONS AFFECTING THE REMOVALS AND NEW WORK.
- EXISTING ELECTRICAL WIRING, AFFECTED BY REMOVALS, TO REMAIN UNLESS OTHERWISE NOTED. DISCONNECT, LABEL, SECURE, PROTECT, CAP, WRAP, BIND AND STORE ABOVE CEILING.
- PROVIDE EMERGENCY AND FIRE DEVICES REQUIRED BY CODE AND CONNECT TO OWNERS EXISTING LIFE SAFETY SYSTEM. COORDINATE FINAL LOCATIONS WITH OWNER AND FIRE MARSHALL.
- WHERE LOCATION OF DOORS ARE NOT DIMENSIONED THEY SHALL BE CENTERED IN THE WALL OR PLACED 48" FROM ADJACENT WALL.
- G.G. SHALL COORDINATE ALL ELECTRICAL, PLUMBING, MECHANICAL AND FIRE PROTECTION DISCIPLINES WITH OWNERS SUB CONTRACTOR.
- G.G. SHALL PROVIDE AND INSTALL FIRE EXTINGUISHERS, COORDINATE SIZE, QUANTITIES AND LOCATIONS WITH WHITE PLAINS FIRE MARSHALL.
- ALL NEW FURNITURE AND FURNITURE WALL SYSTEM BY OTHERS. COORDINATE WITH FURNITURE MANUFACTURER'S FURNITURE LAYOUT PLAN, OWNER AND OWNER'S REPRESENTATIVE.
- ALL FINISHES SHALL BE CLASS "A" MINIMUM FLAME SPREAD RATING.

## CONSTRUCTION LEGEND

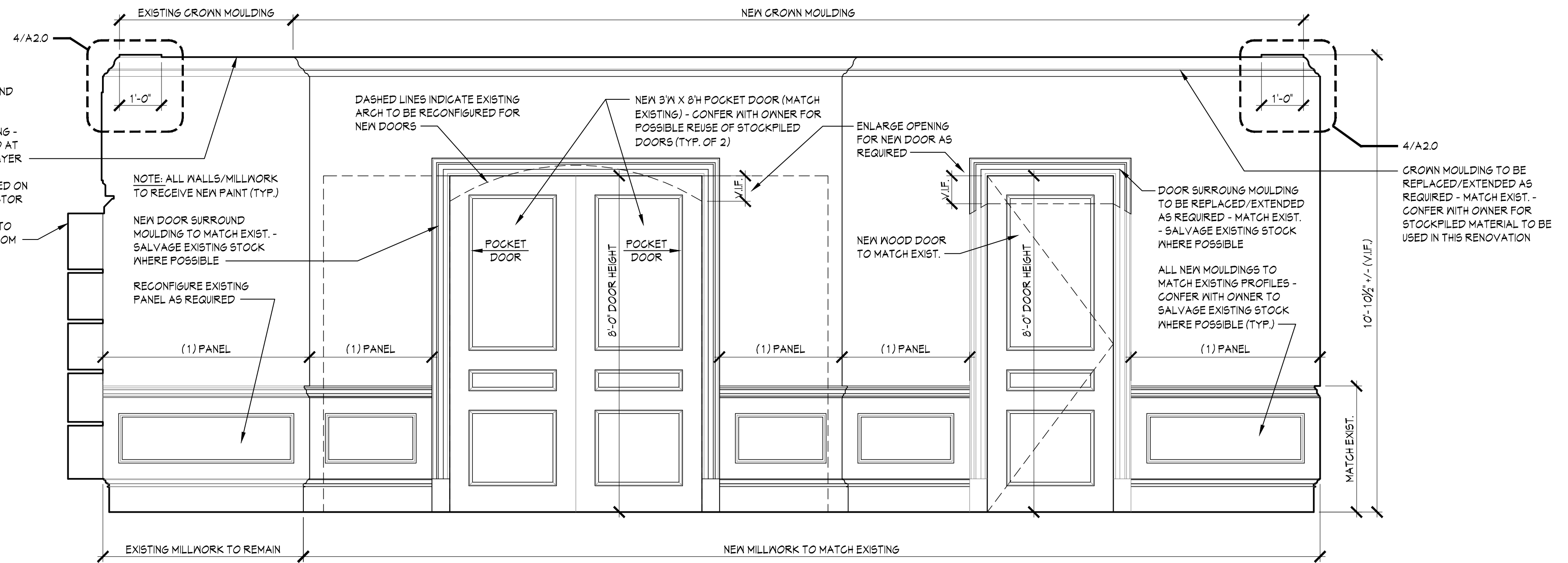
- EXISTING PARTITIONS TO REMAIN  
PATCH AREAS AFFECTED BY NEW WORK AS REQUIRED - PREPARE FOR SMOOTH SURFACE AND NEW FINISHES.
- NEW PARTITION FINISHES - SEE PARTITION LEGEND. PREPARE FOR FINISHES.
- EXISTING PARTITIONS TO BE REMOVED  
PATCH AREAS AFFECTED BY REMOVALS.
- EXISTING LIGHT FIXTURES AND VARIOUS CEILING COMPONENTS TO BE REMOVED - UNLESS OTHERWISE NOTED

## LIGHTING FIXTURE SCHEDULE

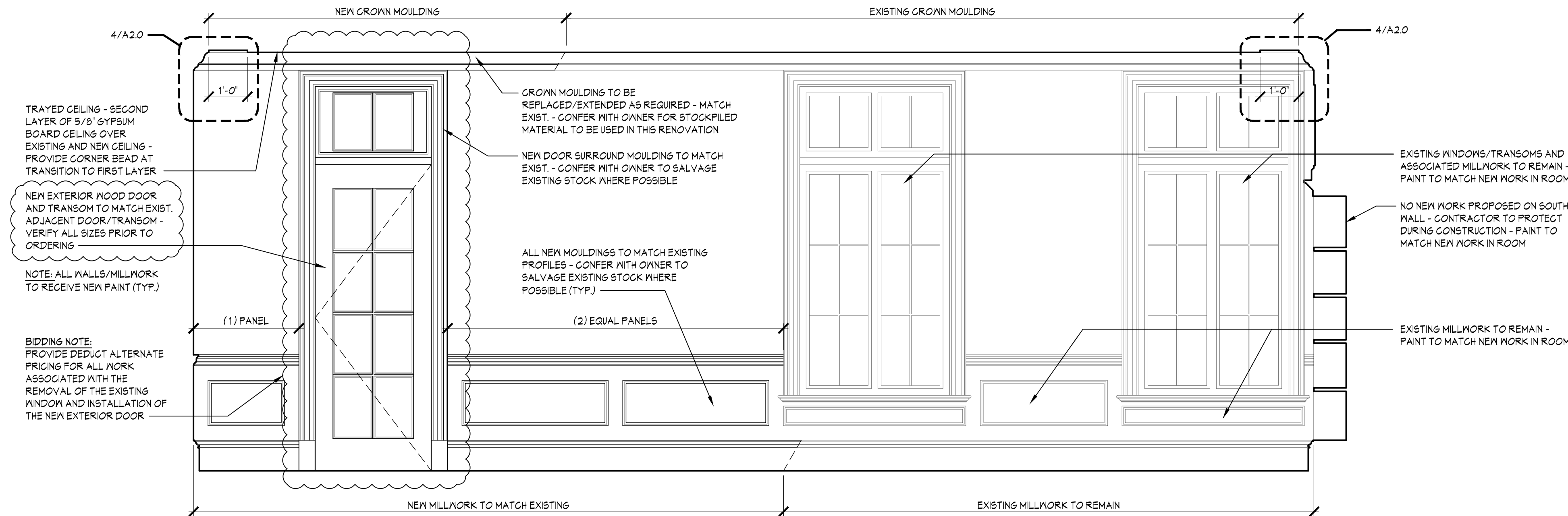
SYMBOL	FIXTURE	TYPE	PRODUCT INFORMATION
	L1	LIGHTOLIER CALCULITE LED 6" GEN 3	6RN - C6L30830ME1 - C6RDLWH
	L2	LIGHTOLIER CALCULITE LED 3"	C3RWN ROUND WALL WASH
	L3	LUMENS - SCALE LED LINEAR SUSPENSION	6KO1988047
	E1	COOPER SURE-LITES EU SERIES - TOP MOUNT	EUR6 1R



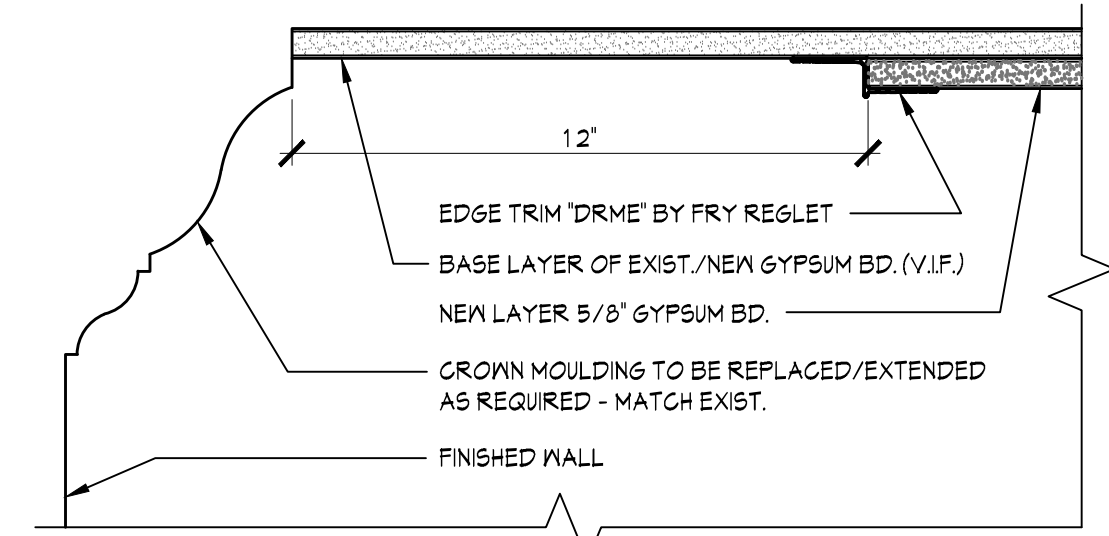
1 SOUTH INTERIOR ELEVATION  
1/2" = 1'-0"



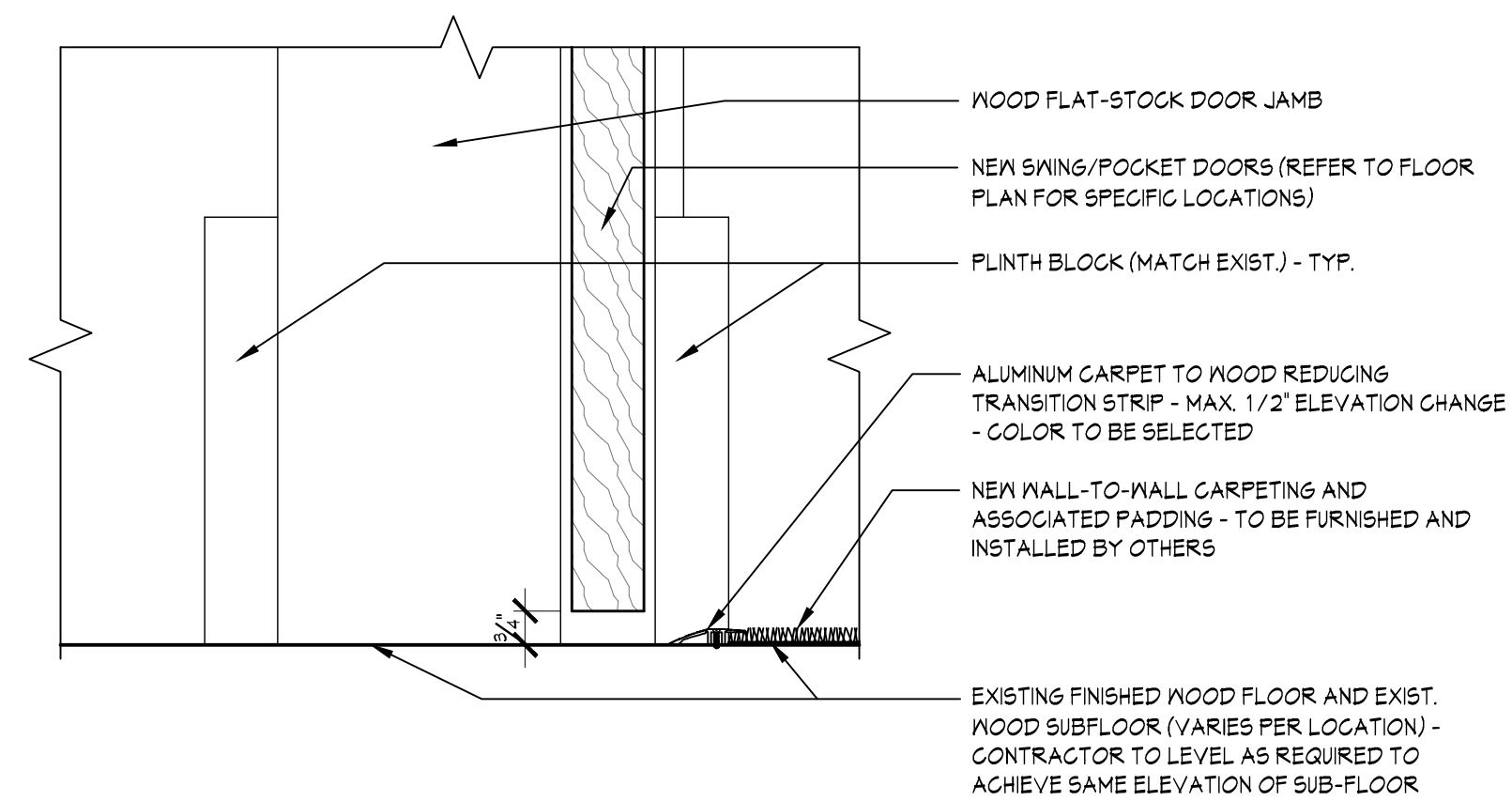
2 EAST INTERIOR ELEVATION  
1/2" = 1'-0"



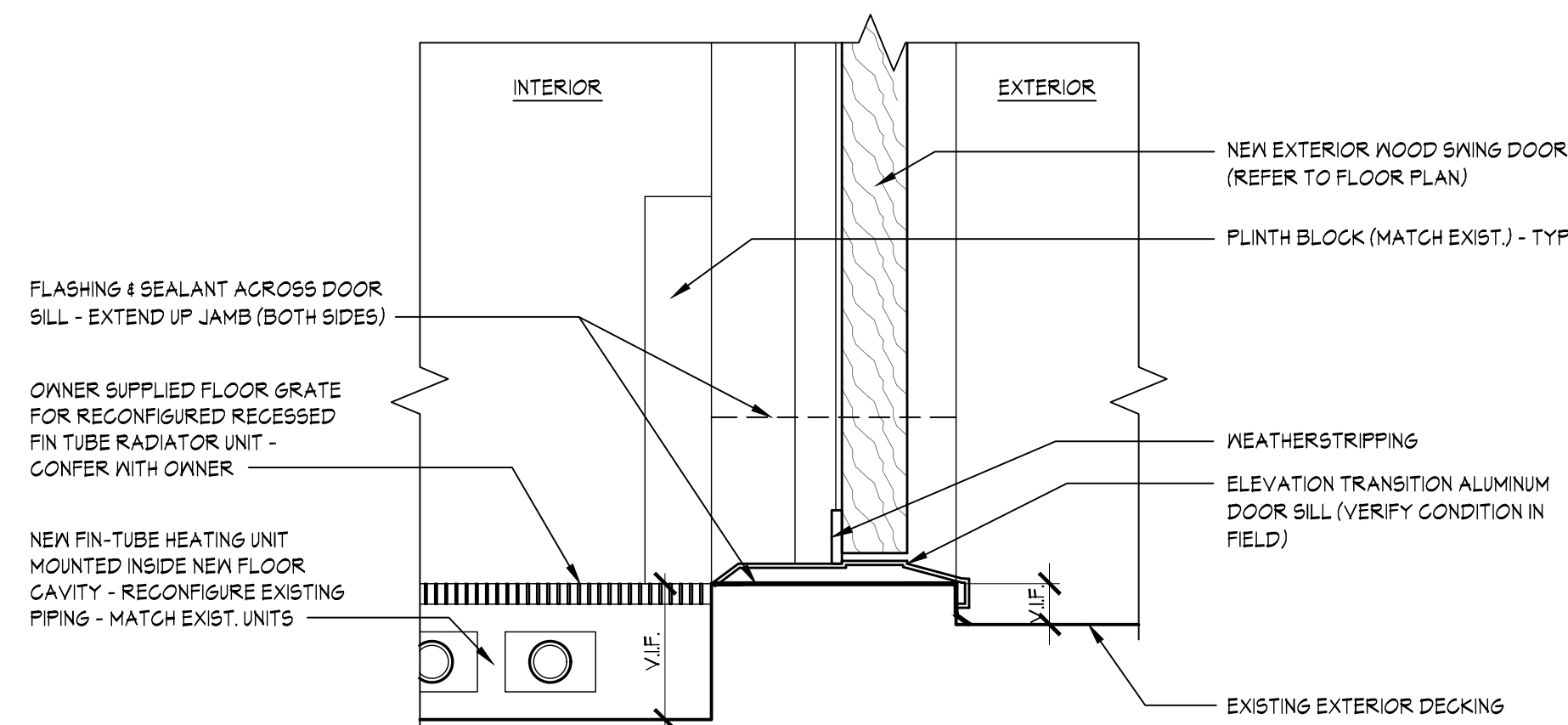
3 WEST INTERIOR ELEVATION  
1/2" = 1'-0"



4 TYPICAL TRAY CEILING DETAIL  
3" = 1'-0"



5 TYPICAL INTERIOR DOOR SILL DETAIL  
3" = 1'-0"



6 EXTERIOR DOOR SILL DETAIL  
3" = 1'-0"