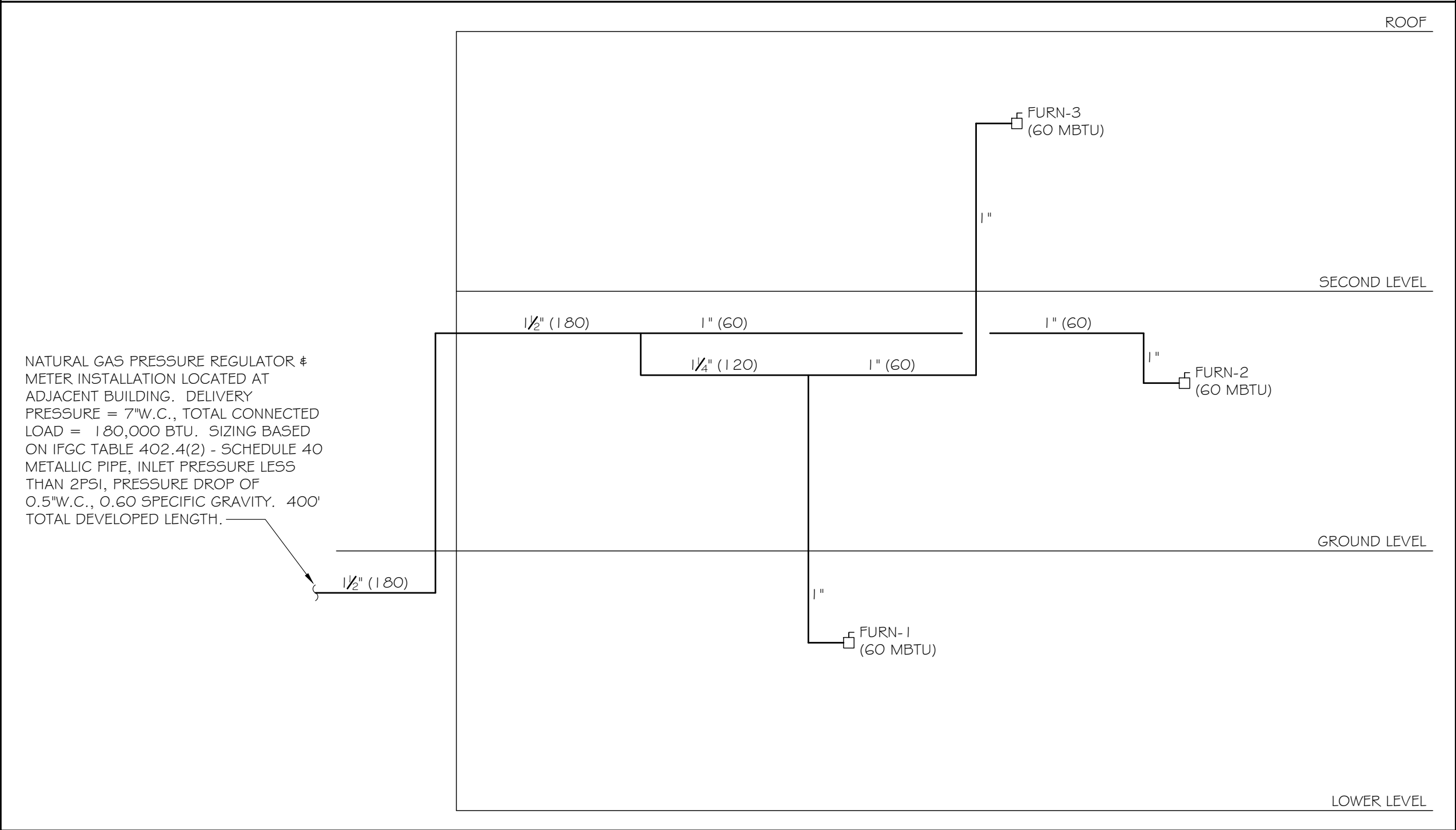


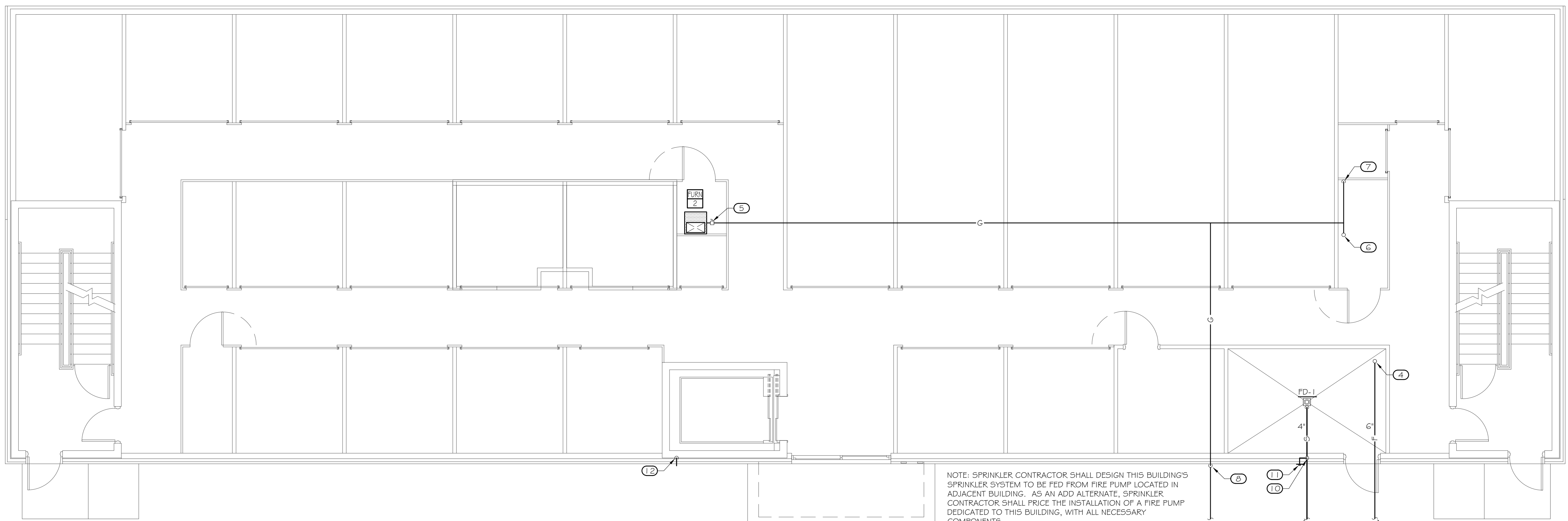
NATURAL GAS RISER DIAGRAM

NO SCALE

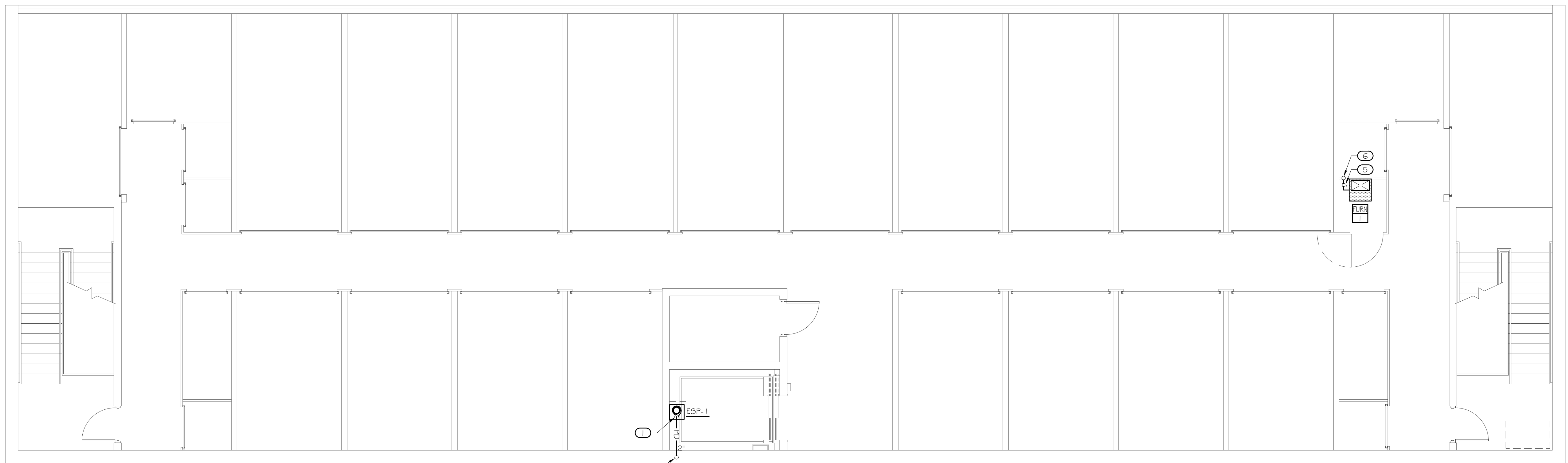


KEYNOTES

- 2" PD DN TO ELEVATOR SUMP PUMP (SEE DETAIL)
- 2" PD DN IN WALL TO GROUND LEVEL
- 6" FIRE SPRINKLER MAIN B/F + STUB UP. SPRINKLER DESIGN BY SPRINKLER CONTRACTOR. AS AN ADD ALTERNATE, INSTALL ELECTRIC DRIVEN 40 HP HORIZONTAL SPLIT CASE FIRE PUMP RATED AT 70 PSI @ 500GPM
- NATURAL GAS CONNECTION TO FURNACE W/ SHUTOFF VALVE, DIRT LEG + UNION, SEE DETAIL
- NATURAL GAS UP
- NATURAL GAS DN
- NATURAL GAS DN ALONG EXTERIOR WALL + B.V.G. SEE RISER DIAGRAM FOR PIPE SIZING AND DESIGN CRITERIA.
- 4" 5 B.V.G. + CONNECT TO EXISTING SITE UTILITY, SEE CIVIL DWG.
- 2" V DN
- 2" SIDEWALL VENT TERMINATION WITH PROTECTIVE SCREEN, INSTALL IN ACCORDANCE WITH IPC 903.G
- 2" PD UP FROM BELOW + THROUGH EXTERIOR WALL. DISCHARGE TO GRADE WITH TURN DOWN @ 1'-0" AFG



2 FIRST FLOOR PLAN
SCALE: 3/16" = 1'-0"

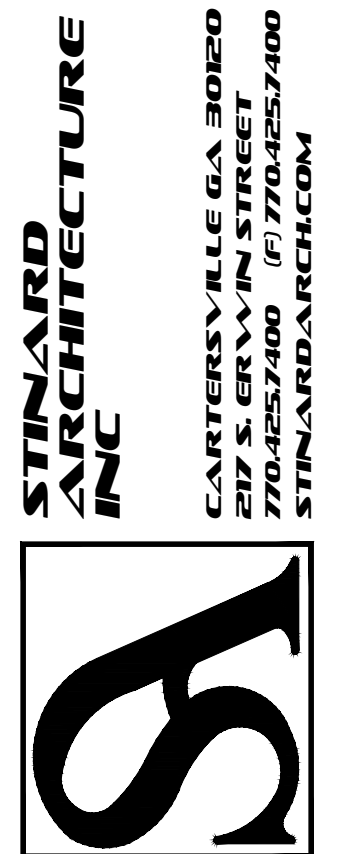


1 LOWER LEVEL PLAN
SCALE: 3/16" = 1'-0"



THESE DRAWINGS AND DESIGNS ARE THE PROPERTY OF STINARD ARCHITECTURE, INC. AND SHALL NOT BE REPRODUCED OR TRANSMITTED IN ANY FORM OR BY ANY MEANS, ELECTRONIC OR MECHANICAL, INCLUDING PHOTOCOPYING, RECORDING, OR BY ANY INFORMATION STORAGE AND RETRIEVAL SYSTEM, WITHOUT THE WRITTEN PERMISSION OF STINARD ARCHITECTURE, INC. IN CONJUNCTION WITH THE ISSUANCE OF THESE DRAWINGS, THE USER AGREES TO HOLD STINARD ARCHITECTURE, INC. HARMLESS FROM AND AGAINST ALL SUCH CLAIMS AND DAMAGES, INCLUDING REASONABLE ATTORNEY'S FEES AND COSTS, THAT MAY BE ASSERTED AGAINST STINARD ARCHITECTURE, INC. BY ANY THIRD PARTY. THE ARCHITECT NOTED OF ANY DISCREPANCIES BEFORE PROCEEDING WITH CONSTRUCTION. DO NOT SCALE DRAWINGS.

Life Storage #230
Self Storage Phase II
1639 Route 22
Brewster, NY 10509



ISSUE: FOR CONSTRUCTION
REVISIONS:

PROJECT NUMBER	201941
DATE	6-5-20

SHEET NUMBER
P1.1