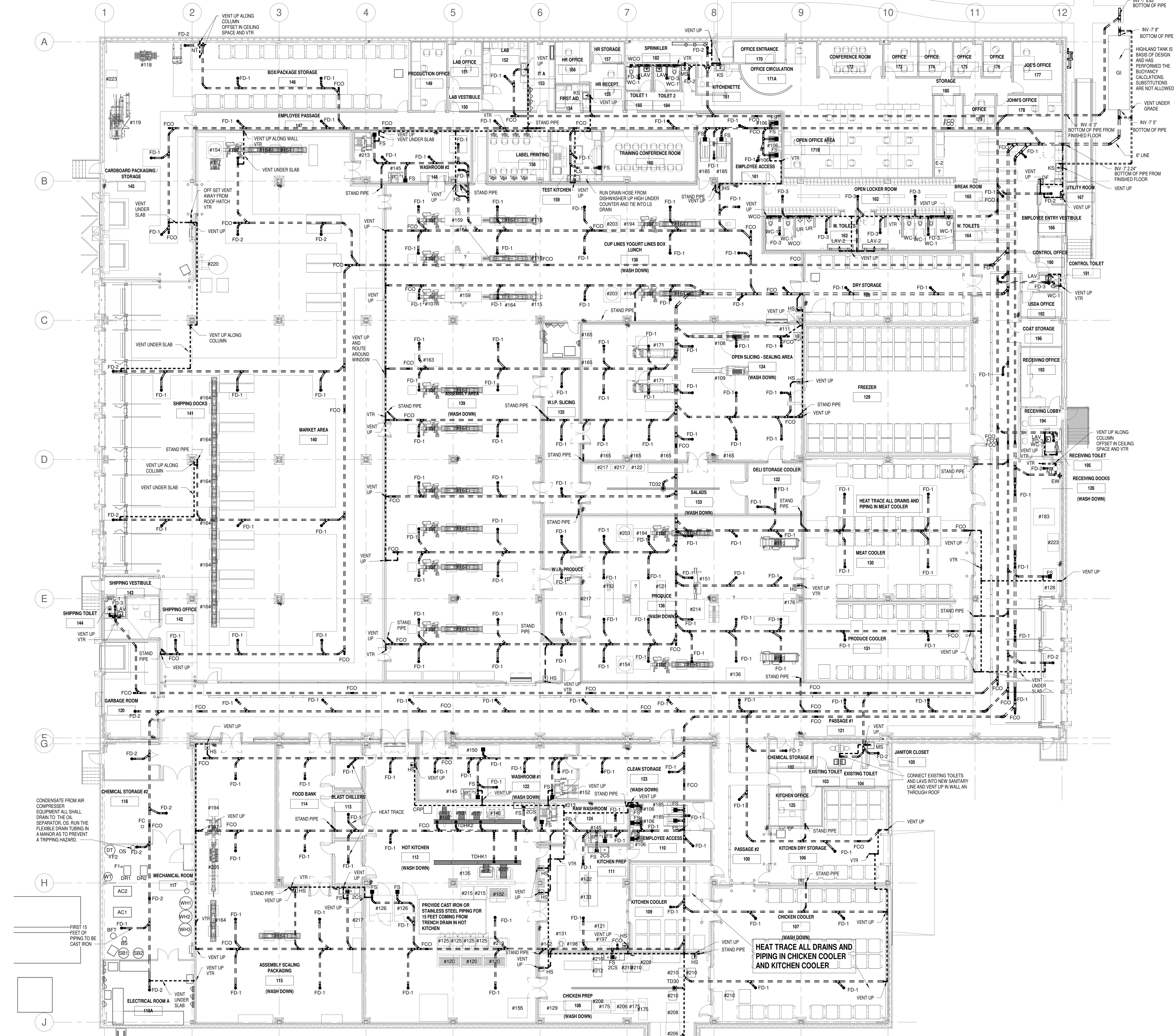


C:\Users\RL\Documents_200066-MEP-2021_Rhiannon7.rvt



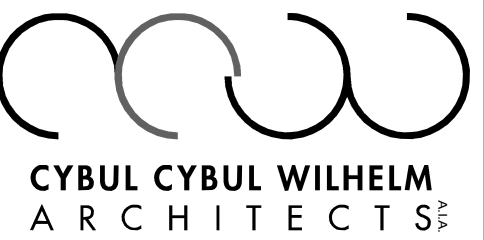
1 PLUMBING SANITARY PLAN
3/32" = 1'-0"

SANITARY GENERAL NOTES:

1. UNLESS OTHERWISE NOTED, ALL SINKS, FLOOR DRAINS, FLOOR SINKS AND/OR STANDPIPES SHALL BE TRAPPED JUST BELOW THE FLOOR.
2. EXISTING SANITARY LOCATION IS APPROXIMATE. FIELD VERIFY ALL FINAL LOCATIONS PRIOR TO BIDDING.
3. UNLESS OTHERWISE NOTED, PROVIDE NEW CONDENSATE DRAIN LINES TO EXISTING HUB DRAINS FOR ALL NEW AND RELOCATED CASES.
4. REFER TO RISER DIAGRAM FOR ADDITIONAL INFORMATION.
5. SEE PLUMBING SCHEDULES FOR FUTURE PIPE CONNECTION SIZES.
6. CONDENSATE PIPING PROVIDED BY PLUMBING CONTRACTOR. REFER TO REFRIGERATION PLANS FOR INFORMATION.

ALL NEW WORK SHALL BE COORDINATED WITH EXISTING UNDERGROUND PIPING. PC TO CONFIRM EXISTING CONDITIONS PRIOR TO BEGINNING WORK.

GENERAL CONDITIONS NOTE:
THIS DRAWING AND THE DESIGN DESCRIBED HEREIN SHALL BE THE PROPERTY OF CYBUL CYBUL WILHELM ARCHITECTS. IT IS TO BE USED ONLY FOR THE PROJECT AND SITE SPECIFICALLY IDENTIFIED HEREIN. ANY REUSE OR MODIFICATION OF THIS DRAWING WITHOUT THE WRITTEN PERMISSION OF CYBUL CYBUL WILHELM ARCHITECTS IS PROHIBITED. THE CONTRACTOR SHALL BE RESPONSIBLE FOR OBTAINING ALL NECESSARY PERMITS AND FOR VERIFYING THE EXISTING CONDITIONS OF THE SITE PRIOR TO BEGINNING WORK. THE CONTRACTOR SHALL BE RESPONSIBLE FOR OBTAINING ALL NECESSARY PERMITS AND FOR VERIFYING THE EXISTING CONDITIONS OF THE SITE PRIOR TO BEGINNING WORK. THE CONTRACTOR SHALL BE RESPONSIBLE FOR OBTAINING ALL NECESSARY PERMITS AND FOR VERIFYING THE EXISTING CONDITIONS OF THE SITE PRIOR TO BEGINNING WORK.



1064 River Rd.
Edgewater, NJ 07020

KOESTNER ASSOCIATES
P.O. BOX 514
Hackensack, NJ 07602

ALLIED ENGINEERING
730 River Road
New Milford, NJ 07646

BD ENGINEERING, LLC
30 Park Road, Suite 4
Tinton Falls, NJ 07724



Lorenzo Foods Teterboro
25 CENTRAL AVE
TETERBORO, NJ, 07608

DOOR STAMP

ISSUED FOR: REVIEW
PLANNING BOARD
BUILDING DEPT
CONSTRUCTION

BRIAN D. TANNENHAUS
NJ PROFESSIONAL ENGINEER
NO. GE 45801
DATE: 09/24/2021

PLUMBING SANITARY PLAN

scale: As indicated

release date:

drawing date: 09/24/2021

drawn by: RL

approved by: KF

project no.: 2102

drawing no.: P-200.00

DOOR BARCODE

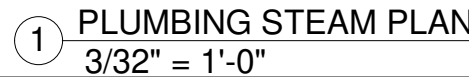
Total

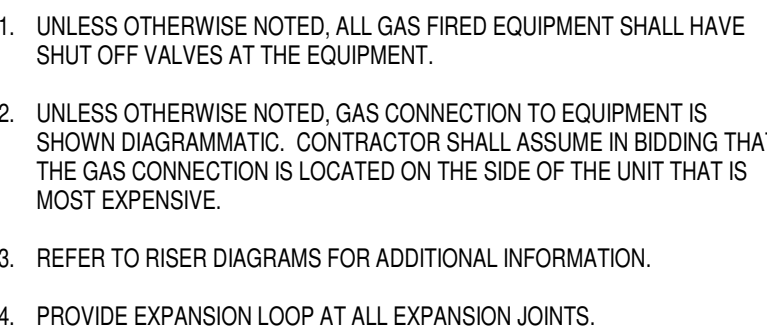
[illegible]

	Total
--	-------

9/24/2021 3:39:41 PM

C:\Users\B1\Documents\ 200066:MFP-2021 Bhiannon7.rvt





Total



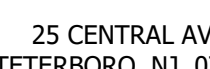
1. UNLESS OTHERWISE NOTED, ALL SINKS, FLOOR DRAINS, FLOOR SINKS AND/OR STANDPIPES SHALL BE TRAPPED JUST BELOW THE FLOOR.
2. EXISTING SANITARY LOCATION IS APPROXIMATE. FIELD VERIFY ALL FINAL LOCATIONS PRIOR TO BIDDING.
3. UNLESS OTHERWISE NOTED, PROVIDE NEW CONDENSATE DRAIN LINES TO EXISTING HUB DRAINS FOR ALL NEW AND RELOCATED CASES.
4. REFER TO RISER DIAGRAM FOR ADDITIONAL INFORMATION.
5. SEE PLUMBING SCHEDULE FOR FIXTURE PIPE CONNECTION SIZES.
9. CONDENSATE PIPING PROVIDED BY PLUMBING CONTRACTOR. REFER TO REFRIGERATION PLANS FOR INFORMATION.

Drawing name:	
PLUMBING SANITARY RISER	
Size:	12" = 1'-0"
Issue date:	
Drawing date: 09/24/2021	
Drawn by:	RL
Approved by:	KF
Project no.:	2102
Drawing no.:	
P-900.00	
JOB BARCODE:	
Total	



1. UNLESS OTHERWISE NOTED, ALL BRANCH PIPING SHALL HAVE A SHUTOFF VALVE INSTALLED WHERE THE BRANCH TAKE OFF BEGINS FROM THE MAIN.
2. UNLESS OTHERWISE NOTED, ALL PLUMBING FIXTURES SHALL HAVE SHUT OFF VALVES AT THE FIXTURE.
3. REFER TO RISER DIAGRAM FOR ADDITIONAL INFORMATION.
4. REFER TO PLUMBING SCHEDULES FOR FIXTURE PIPE CONNECTION SIZES.
7. REFER TO DETAILS FOR SPECIFIC INSTALLATION REQUIREMENTS
8. PROVIDE EXPANSION LOOP AT ALL EXPANSION JOINTS

BD ENGINEERING, LLC.
30 Park Road, Suite 4
Tinton Falls, NJ 07724



BRIAN D. TANNENHAUS

drawing name:

PLUMBING WATER RISER

scale:

reissesse Galle!

drawn by:

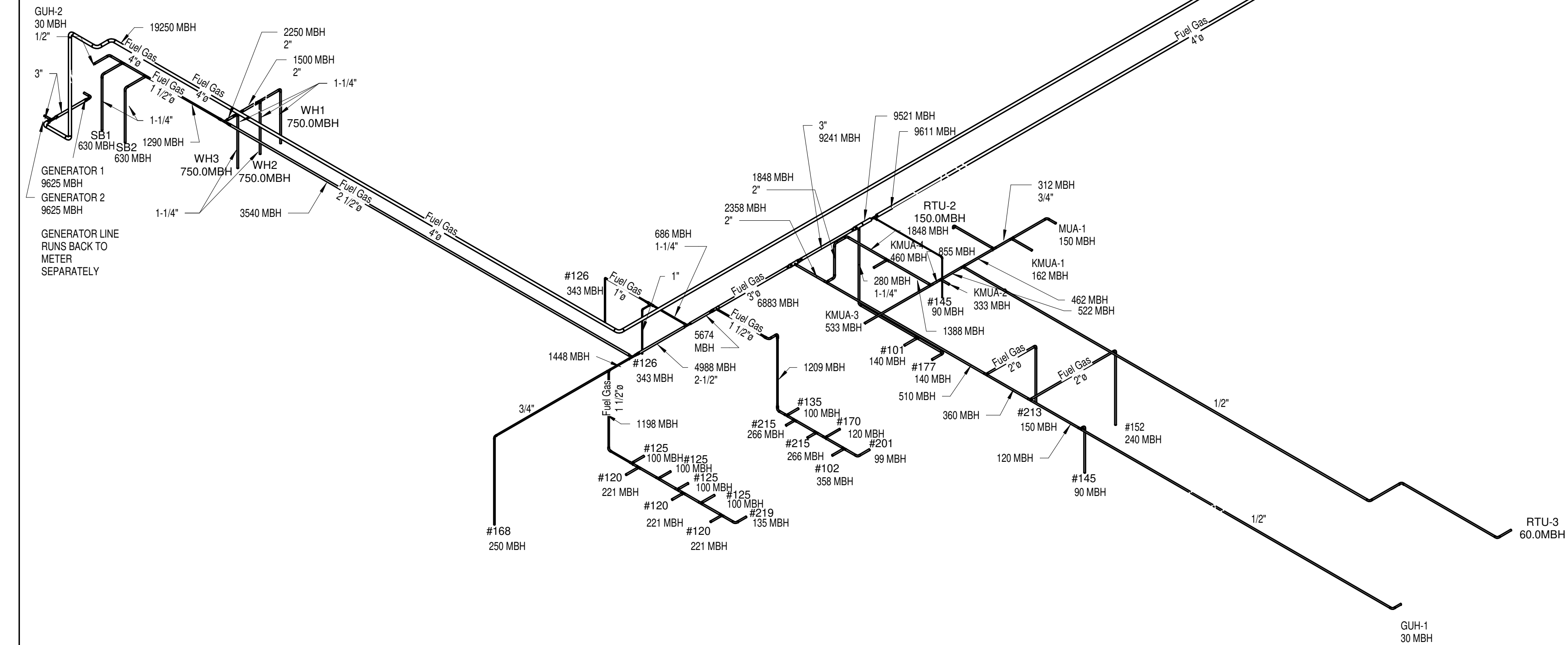
approved by: KF

drawing no.: 2102

P-901.00

DOB BARCODE:

Total

[illegible]

GAS REGULATOR CHART		
PIPE SIZE	MODEL #	SPRING MODEL
1/2"	FRS 7056	229-821
3/4"	FRS 7076	229-836
1"	FRS 7106	229-945
1-1/4"	FRS 7126	229-854
1-1/2"	FRS 7156	229-854
2"	FRS 7206	229-877
2-1/2"	FRS 7256	229-886
3"	FRS 7306	229-886
4"	FRS 5100	229-895
5"	FRS 5125	229-904
6"	FRS 5150	229-912

DUNGS PRESSURE REGULATORS INCOMING 2 PSI SET PRESSURE ACCORDING TO EQUIPMENT REQUIREMENTS


REFER TO THE APPLIANCE MANUFACTURERS INSTALLATION REQUIREMENTS TO DETERMINE THE MAXIMUM LENGTH OF PIPE ALLOWED AFTER THE REGULATOR AND THE SIZING AND FITTING LIMITATIONS

ALL REGULATORS ARE TO BE FULL SIZE IN AND OUT TO MATCH INCOMING LINE SIZE.

FUEL GAS CRITERIA
INLET PRESSURE: 2 PSI
PRESSURE DROP: 1.0 IN W.C.
SPECIFIC GRAVITY: 0.6
TOTAL DEVELOPED LENGTH: 700 FT

NOTE:
PC TO COORDINATE PRESSURE
REGULATOR REQUIREMENTS WITH
ALL GAS EQUIPMENT SUPPLIERS.

GAS REGULATORS FOR KMUA UNITS:
 KMUA-1 162 MBH FRS 705 (1/2") Delta P = 1
 KMUA-2 333 MBH FRS 705 (1/2") Delta P = 1.5"
 KMUA-3 533 MBH FRS 705 (1/2") Delta P = 4"
 KMUA-4 460 MBH FRS 705 (1/2") Delta P = 3"



**CYBUL CYBUL WILHELM
ARCHITECTS**

1064 River Rd.
Edgewater, NJ 07020

KOESTNER ASSOCIATES
P.O. BOX 514
Hackensack, NJ 07602

ALLIED ENGINEERING
730 River Road
New Milford, NJ 07646

BD ENGINEERING, LLC.
30 Park Road, Suite 4
Tinton Falls, NJ 07724

BD 
engineering

The logo for Lorenzo Food Group, featuring the word "lorenzo" in a black serif font and "food group" in a black sans-serif font, with a stylized white script flourish over the word "food".

Lorenzo Foods Teterboro
25 CENTRAL AVE
TETERBORO, NJ, 07608

DOB STAMP:

ISSUED FOR

REVIEW

PLANNING BOARD

BUILDING DEPT

BID

CONSTRUCTION

SIGN & SEAL
 BRIAN D. TANNENHAUS
 NJ PROFESSIONAL ENGINEER
 NO. GE 45801
 DATE: 09/24/2021

drawing name	
PLUMBING GAS RISER	
scale:	12" = 1'-0"
release date:	
drawing date:	09/24/2021
drawn by:	RL
approved by:	KF
project no.:	2102
drawing no.:	
P-902.00	
JOB BARCODE:	
Total	

SPECIFICATIONS, AND THE EXCLUSIVE PROPERTY OF **NO ENGINEERING**. WE RESERVE THE RIGHT TO HAVE THIS WORK REPRODUCED, FABRICATED, CONSTRUCTED, OR OTHERWISE MANUFACTURED BY ANY OTHER CONTRACTOR SOLELY FOR YOUR INSPECTION. ACTUAL FABRICATION, CONSTRUCTION OR MANUFACTURING, IS SPECIFICALLY **PROHIBITED** UNLESS AND UNTIL, ALL OF THE FOLLOWING CONDITIONS ARE MET: (1) THE CONTRACTOR HAS BEEN ADVISED THAT THERE HAVE BEEN NO PREVIOUS COMPLAINTS OR DISPUTES FILED BY THE COMPANY OR INDIVIDUAL (CONTRACTOR) WHO HAS BEEN REQUIRED TO PERFORM THE WORK DESCRIBED HEREIN, AND (2) THE CONTRACTOR HAS BEEN NOTIFICATION OF THE COMPANY'S CONCERN. IF THE CONTRACTOR HAS BEEN NOTIFIED OF THE COMPANY'S CONCERN FOR VERIFYING THAT THE DIMENSIONS, AND ALL REQUISITES AT THE JOB SITE ARE AS REPRESENTED ON THIS DRAWING AND THE CONTRACTING SPECIFICATIONS, WHERE IS THE CONTRACTOR HAS BEEN WHAT IS DESCRIBED IN THESE DOCUMENTS, AND THE ACTUAL FIELD CONDITIONS, THE CONTRACTOR SHALL INFORM THE ENGINEER, PRIOR TO SIGNING THE CONTRACT. IT IS THE EXCLUSIVE RESPONSIBILITY OF THE CONTRACTOR TO OBTAIN ALL NECESSARY PERMITS AND APPROVALS FROM THE MUNICIPAL AND STATE RULES AND REGULATIONS. FAILURE OF THE CONTRACTOR TO DISCLOSE THE APPROPRIATE PROCEDURES WILL RESULT IN THE CONTRACTOR BEING RESPONSIBLE FOR ANY AND ALL DAMAGES OR ITEMS IN CONFLICT AT HIS OWN EXPENSE. **NO EXCEPTIONS!!!**



drawing name:	
<h1 style="margin: 0;">PLUMBING STEAM RISER</h1>	
scale:	
release date:	
drawing date:	09/24/2021
drawn by:	RL
approved by:	KF
project no.:	2102
drawing no.:	
<h1 style="margin: 0;">P-904.00</h1>	
DOB BARCODE:	
Total	

NOTES:

ADD PIPE STANDS 1'-0" FROM ALL CHANGES IN DIRECTION AND DROPS THRU ROOF.

PIPING SHALL BE SUPPORTED AT ALL ELBOWS AND TEES AND AT SPACING SPECIFIED IN TABLE.

PIPING SHALL BE SLOPED AND ROUTED TO PREVENT TRAPPING CONDENSATE (EXCEPT AT DIRT LEGS) AND TO FACILITATE CONDENSATE DRAINAGE.

DO NOT ATTACH PIPESTANDS TO ROOF.

MIRO INDUSTRIES, INC.
170 WEST COTTAGE AVE
SANDY, UTAH 84070
(801) 566-3680



1. AUTOMATIC AIR VENTS SHALL BE SIZED PER THE STEAM PRESSURE PROVIDED



1. CONDENSATE FOR SYSTEMS WITH OVERHEAD RETURN MUST BE LIFTED. IN SYSTEMS OPERATING ABOVE 40 PSIG, THE TRAP DISCHARGE CAN BE PIPED DIRECTLY TO THE RETURN SYSTEM. HOWEVER, BACK PRESSURE AT THE TRAP DISCHARGE (RETURN LINE PRESSURE PLUS HYDRAULIC PRESSURE CREATED BY HEIGHT OF LIFT MUST NOT EXCEED STEAM MAIN PRESSURE, AND THE TRAP MUST BE SIZED TO ACCOMMODATE THE RETURN LINE BACK PRESSURE.)
2. FOR SYSTEMS OPERATING UNDER 40PSIG OR THE BACK PRESSURE AT THE TRAP IS CLOSE TO THE OPERATING SYSTEM PRESSURE, THE CONDENSATE MUST FLOW BY GRAVITY. A COLLECTING LEG MUST BE USED AND THE CONDENSATE MUST DISCHARGE INTO A VENTED CONDENSATE RECEIVER FROM WHICH IT MUST BE PUMPED TO THE OVERHEAD CONDENSATE RETURN.

STEAM END OF MAIN



1. THIS DETAIL IS FOR DIAGRAMATIC PURPOSES ONLY TO SHOW THE BASIC PIPING LAYOUT. THE CONTRACTOR SHALL COORDINATE ALL FINAL PIPING AND/OR ELECTRICAL REQUIREMENTS WITH THE MANUFACTURE.
2. COORDINATE HEADER ELEVATION WITH BOILER MANUFACTURE.
3. HEADER LENGTH SHALL ALLOW FOR ADEQUATE SPACE TO OPERATE AND SERVICE VALVES.



1. THE CONTRACTOR SHALL COORDINATE THE FINAL EQUIPMENT CONNECTION SIZES WITH THE MANUFACTURE. PROVIDE ECCENTRIC REDUCERS AS REQUIRED.
2. THE KETTLE MANUFACTURE MAY PROVIDE PRESSURE RELIEF VALVES AT THE KETTLE STEAM CONNECTIONS. IF THESE ARE PROVIDED THE CONTRACTOR SHALL VENT THE SAFETY VALVES AS SHOWN IN THE 'STEAM SAFETY VALVE' DETAIL.



9/24/2021 3:32:27 PM

FOR ALL PROCESS EQUIPMENT REFER TO
THE ARCHITECTURAL SCHEDULES ON THE
ARCHITECTS DRAWINGS

PLUMBING FIXTURE SCHEDULE												
TAG	FIXTURE	MANUFACTURER	MODEL	MISC. MATERIAL		FIXTURE ACCESSORIES	PLUMBING CONNECTION SIZES				NOTES	
				MOUNT TYPE	MATERIAL/COLOR		CW	HW	SAN	VENT		
CS	2 COMPARTMENT SINK	ELKAY	WISF8320R2	DROP IN	STAINLESS STEEL	FAUCET LK434F14LC	1 1/2"	1 1/2"	3-1/2"	1-1/2"		
OF	DRINKING FOUNTAIN	ELKAY	LZS6S	WALL	STAINLESS STEEL		1 1/2"	-	1-1/2"	1-1/2"	115 V	
FD-1	FLOOR CLEANOUT	FOOD SAFE DRAINS	FSPC0-84	FLOOR	316 STAINLESS STEEL	PTPRAP-54 316 TRAP	-	-	4"	-	PROVIDE FORLIFT GRADE. MOUNT FLUSH TO TOP OF FLOOR.	
FD-1	FLOOR DRAIN	FOOD SAFE DRAINS	FD-100A-RCO	FLOOR	316 STAINLESS STEEL	PTPRAP-54 316 TRAP. MAGNETIC LOCK	-	-	4"	2-1/2"	PROVIDE WITH FORKLIFT DUTY TOPWITH MAGNETIC LOCK AND REMOVABLE SEDIMENT BASKET	
FD-2	FLOOR DRAIN	WATTS	FD-100A	FLOOR	EPOXY COATED CAST IRON WITH STAINLESS TOP		-	-	-	2-1/2"	HEAVY DUTY	
FD-3	FLOOR DRAIN	WATTS	FD-100-A	FLOOR	EPOXY COATED CAST IRON		-	-	2"	1-1/2"		
FHB	HOSE BIB	JR SMITH	5519	WALL	BRONZE, STAINLESS	STAINLESS STEEL RECESSED BOX WITH LOCK KEY	3/4"	-	-	-	INTEGRAL VACUUM BREAKER AND DUAL CHECK VALVE W/ 1" GARDEN HOSE THREAD	
FS	FOOD SAFE DRAINS	FOOD SAFE DRAINS	12x12x8" FLOOR SINK	FLOOR	316 STAINLESS STEEL	PTPRAP-54 316 TRAP. SQ AD/FLOOR SINK W/ PERF GRADE LAYOUT	-	-	4"	2"	12X12X8" DEEP. PROVIDE USDA COMPLIANT SS DOME BOTTOM, 1/2 GRADE, SEDIMENT BUCKET. ZLORENZOF-12x12x84DFS	
GI	GREASE INTERCEPTOR	HIGHLAND TANK	FG-4000	RECESSED	CARBON STEEL WITH HI-TEMP COATING	MANHOLE EXTENSIONS AS REQUIRED	-	-	4"	2"	PROVIDE CHEMLINE4000 EPOXY INTERIOR COATING. SUBSTITUTIONS ARE NOT ALLOWED AS HIGHLAND TANK IS BASIS OF DESIGN AND HAS PERFORMED THE BUOYANCY CALCULATIONS	
HS	KNEE VALVE SINK	ADVANCED TABCO	7-IPS-30	WALL	STAINLESS STEEL		1 1/2"	1 1/2"	1-1/2"	1-1/2"		
HST	HOSE STATION	ARMSTRONG	3032	WALL			3/4"	3/4"	-	-		
KS	KITCHEN SINK	KOHLER	K-3348-3	COUNTER	STAINLESS STEEL	FAUCET 15171-F	1 1/2"	1 1/2"	1-1/2"	1-1/2"		
LAJ	BATHROOM SINK	KOHLER	K-2005	WALL	WHITE/ VITREOUS CHINA	BACKSPLASH, FAUCET 15182-4NDRA	1 1/2"	1 1/2"	1-1/2"	1-1/2"		
LAJ-2	BATHROOM SINK	BRADLEY	LV033	WALL	QUARTZ	FAUCET SS5-3700	1 1/2"	1 1/2"	1-1/2"	1-1/2"	BATTERY POWERED FAUCET	
LS	LAB SINK	KOHLER	K-526T-1	DROP IN	STAINLESS STEEL	FAUCET K-1043	1 1/2"	1 1/2"	1-1/2"	1-1/2"		
MS	MOP SINK	FIAT	TSB-700 SERIES	FLOOR	TERRAZZO	FAUCET K-8907	1 1/2"	1 1/2"	3"	1-1/2"		
NT	ACID NUTRIALIZATION TANK	MIFAB	M-NEUT-30-HD3000	RECESSED	POLYETHYLINE	HEAVY DUTY COVER	-	-	3"	3"		
RD-1	ROOF DRAIN	JR SMITH	1010	ROOF	CAST IRON	OPTIONAL 1020 SIDE OUTLET ATTACHMENT	-	-	-	-	MATCH SIZE OF EXISTING ROOF DRAIN	
RD-2	OVERFLOW ROOF DRAIN	JR SMITH	1080	ROOF	CAST IRON		-	-	-	-	MATCH SIZE OF EXISTING ROOF DRAIN	
SH	ROOF HICAPANT	SHIMAS		ROOF	GALVANIZED		3/4"	-	-	-	FREEZELESS. DOES NOT REQUIRE DRAIN. INTEGRAL VACUUM BREAKER AND BACKFLOW PREVENTION	
TD30	SLOT DRAIN	FOOD SAFE DRAINS	FS1000XL SERIES	FLOOR	316 STAINLESS STEEL	RUNTRAP-54, 12x12x16 5/8" END CATCH BASIN W/ SIDE OUTLET	-	-	4"	2"	SIDE OUTLET CATCH BASIN. CATCH BASIN LOCATED END OF SLOT DRAIN. ZLORENZOF-SD-4-CHICKENPR	
TD32	SLOT DRAIN	FOOD SAFE DRAINS	FS1000XL SERIES	FLOOR	316 STAINLESS STEEL	RUNTRAP-54, 12x12x16 5/8" CENTER CATCH BASIN W/ SIDE OUTLET	-	-	4"	2"	SIDE OUTLET CATCH BASIN. CATCH BASIN LOCATED MIDDLE OF SLOT DRAIN. ZLORENZOF-SD-3-SALADS	
TDHk1	TRENCH DRAIN	FOOD SAFE DRAINS	FSFLAT TRENCH DRAIN-RUN1	FLOOR	316 STAINLESS STEEL	RUNTRAP-54	-	-	4"	2"	BOTTOM OUTLET. ZLORENZOF-TF-1-HK	
TDHk2	TRENCH DRAIN	FOOD SAFE DRAINS	FSFLAT TRENCH DRAIN-RUN2	FLOOR	316 STAINLESS STEEL	RUNTRAP-54	-	-	4"	2"	BOTTOM OUTLET. ZLORENZOF-TF-1-HK	
UR	ADA URINAL	KOHLER	K-4591-ET	WALL	WHITE/ VITREOUS CHINA	FLUSHMETER K-13520	3/4"	-	-	-		
WC-1	WATER CLOSET	KOHLER	K-9432S	WALL	WHITE/ VITREOUS CHINA	FLUSHMETER K-76321	1"	-	4"	2"		
WCO	WALL CLEANOOUT	ZURN	Z1441	WALL	CAST IRON	STAINLESS STEEL ACCESS COVER	-	-	4"	-		

PLUMBING EQUIPMENT SCHEDULE													
TAG	EQUIPMENT	MANUFACTURER	MODEL	SERVICE	PUMP SECTION		HEAD PRESSURE (FT)	HP	VOLTAGE	PHASE	AMPS	ELECTRICAL SECTION	NOTES
					PUMP TYPE	FLOW RATE (GPM)						AFC RATING	
EXP	EXPANSION TANK	TACO	PAX84-150										
RCP	RECIRCULATION PUMP	EBARRA	EVMSUF3-5	HW RECIRC	RECIRCULATION	10	42.00	0.33			1.9		

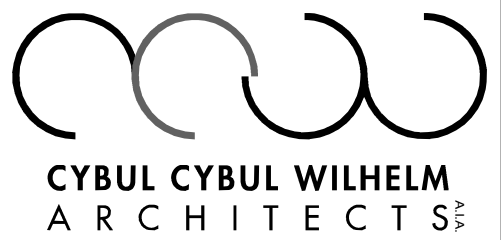
PLUMBING COMPRESSED AIR EQUIPMENT SCHEDULE									
TAG	EQUIPMENT	MANUFACTURER	MODEL	HP	VOLTAGE	PHASE	AMPS	NOTES	
A1	AIR COMPRESSOR	SULLAIR	3009V-V05	40.00	460	3	57.8	OUTLET CONNECTION 1-1/2", SAFETY RELIEF VALVE 1/2" 150 PSIG 300CFM FULL LOAD 125PSI. VALVE 3, 2.5" BACK MNT 200 PSIG DRY GAUGE 3 PRESSURE GAUGE, ELECTRONIC TIMER DRAIN VALVE 90900-04	
A2	AIR COMPRESSOR	SULLAIR	3009V-V05	40.00	460	3	57.8	OUTLET CONNECTION 1-1/2", SAFETY RELIEF VALVE 1/2" 150 PSIG 300CFM FULL LOAD 125PSI VALVE 3, 2.5" BACK MNT 200 PSIG DRY GAUGE 3 PRESSURE GAUGE, ELECTRONIC TIMER DRAIN VALVE 90900-04	
P1	DRYER	SULLAIR	DHL-200-V01	115	1	1	2.0	SCFM TO 40 DEG F	
OT	DRY TANK	STEEL FAB	200 GAL VERT TANK						
F1	PREFILTER	SULLAIR	SVFT-025F					PIPE CONNECTION 1-1/2"	
F2	FILTER	SULLAIR	SVX4-0250F					PIPE CONNECTION 1-1/2"	
FC	FLOW CONTROLLER	OPTIOL	OP-200-GRN-RL					MAX FLOW 200 SCFM. SET TO 115 PSI	
OS	OIL SEPARATOR	CLEAN RESOURCES	LC2 500					INSTALL IN RECESSED PIT	
WT	WET TANK	STEEL FAB	400 GAL VERT TANK						

PLUMBING STEAM EQUIPMENT SCHEDULE											
TAG	EQUIPMENT	MANUFACTURER	MODEL	FLOW RATE (GPM)	PUMP TYPE	HEAD	HP	VOLTAGE	PHASE	AMPS	NOTES
BFT	VERTICAL FEED TANK	COLUMBIA	VRT-2				0.75	115	1	13.8	
S8	BLOWDOWN SEPARATOR	COLUMBIA	BS-1								
CRP	CONDENSATE RETURN PUMP	SPS INDUSTRIES	LP52	13	CONDENSATE RETURN	46	0.33	120	1	7.5	PROVIDE 316 STAINLESS STEEL, WATERTIGHT NEMA 4X, FOR 600BSHR, 25 GAL CAPACITY
SB1	STEAM BOILER	COLUMBIA	CT-15								630 MSH SET BOILER TO 80 PSI
SB2	STEAM BOILER	COLUMBIA	CT-15								630 MSH SET BOILER TO 80 PSI

PLUMBING GAS WATER HEATER SCHEDULE												
TAG	SERVICE	MANUFACTURER	MODEL	STORAGE CAPACITY	INPUT MBH	GAS PRESSURE	VOLTAGE	AMPS	PHASE	RECOVERY	EFFICIENCY	NOTES
WH1	MECHANICAL ROOM	A.O. SMITH	8THS-750A	120	750.0	3.5" 1/4" WC	120	5	1	882 UG001 @ 100 DEG F RISE	0.97	PROVIDE CONDENSATE NEUTRALIZATION KIT 100283940
WH2	MECHANICAL ROOM	A.O. SMITH	8THS-750A	120	750.0	3.5" 1/4" WC	120	5	1	882 UG001 @ 100 DEG F RISE	0.97	PROVIDE CONDENSATE NEUTRALIZATION KIT 100283940
WH3	MECHANICAL ROOM	A.O. SMITH	8THS-750A	120	750.0	3.5" 1/4" WC	120	5	1	882 UG001 @ 100 DEG F RISE	0.97	PROVIDE CONDENSATE NEUTRALIZATION KIT 100283940

[illegible]

copyright - E.O. ENGINEERING



1064 River Rd.
Edgewater, NJ 07020

KOESTNER ASSOCIATES
P.O. BOX 514
Hackensack, NJ 07602

ALLIED ENGINEERING
730 River Road
New Milford, NJ 07646

BD ENGINEERING, LLC.
30 Park Road, Suite 4
Tinton Falls, NJ 07724

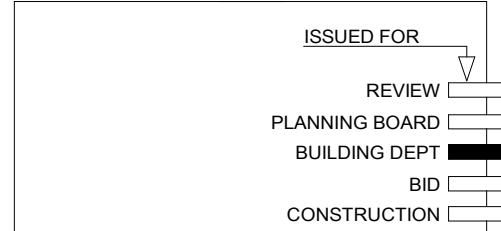
BD 
engineering



Lorenzo Foods Teterboro

25 CENTRAL AVE
TETERBORO, NJ, 07608

DOB STAMP: _____



BRIAN D. TANNENHAU

NJ PROFESSIONAL ENGINEER
NO. GE 45801
DATE: 09/24/2021

drawing name:

PLUMBING SCHEDULES

code:

revision date:

09/24/2021

RE

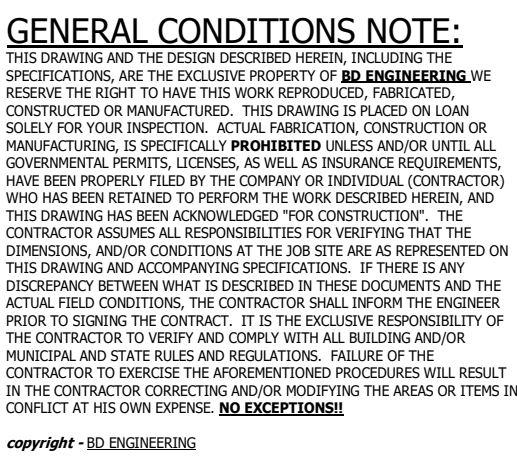
answered by:

project no.:	
--------------	--

P-2000.00

DOB BARCODE:

	Total
--	-------



1064 River Rd.
Edgewater, NJ 07020

ALLIED ENGINEERING
730 River Road
New Milford, NJ 07646

BD ENGINEERING, LLC
30 Park Road, Suite 4
Tinton Falls, NJ 07724

BD
engineering

Lorenzo Foods Teterboro

25 CENTRAL AVE
TETERBORO, NJ, 07608

DOB STAMP:

ISSUED FOR
 REVIEW ☒
 PLANNING BOARD ☐
 BUILDING DEPT ☐
 BID ☐
 CONSTRUCTION ☐

BRIAN D. TANNENHAUS

NJ PROFESSIONAL ENGINEER
NO. GE 45801
DATE: 09/24/2021

PD-100.00

DOB BARCODE.

Total