

Lorenzo Foods  
TETERBORO, NJ, 07608

10/1/2021

4967555

ZDK

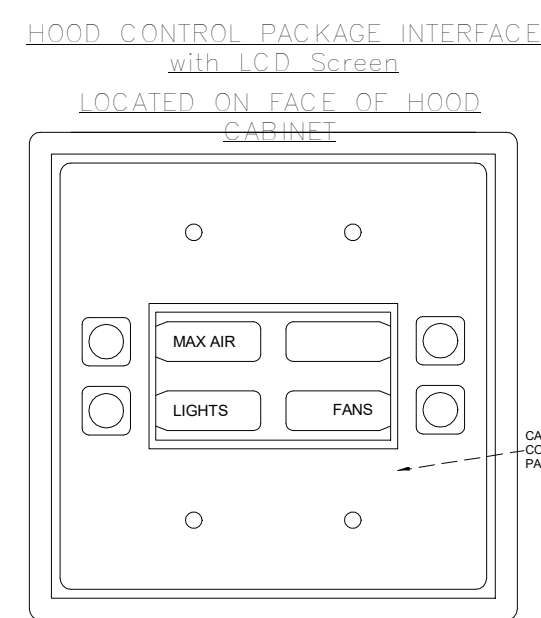
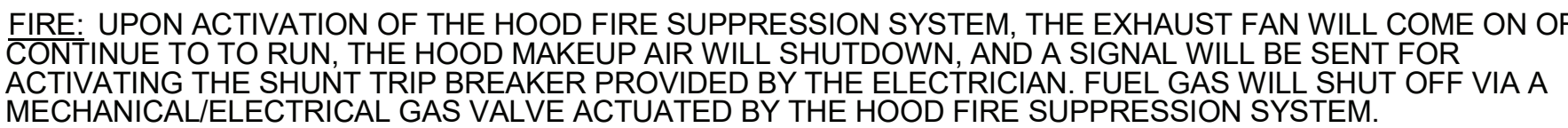
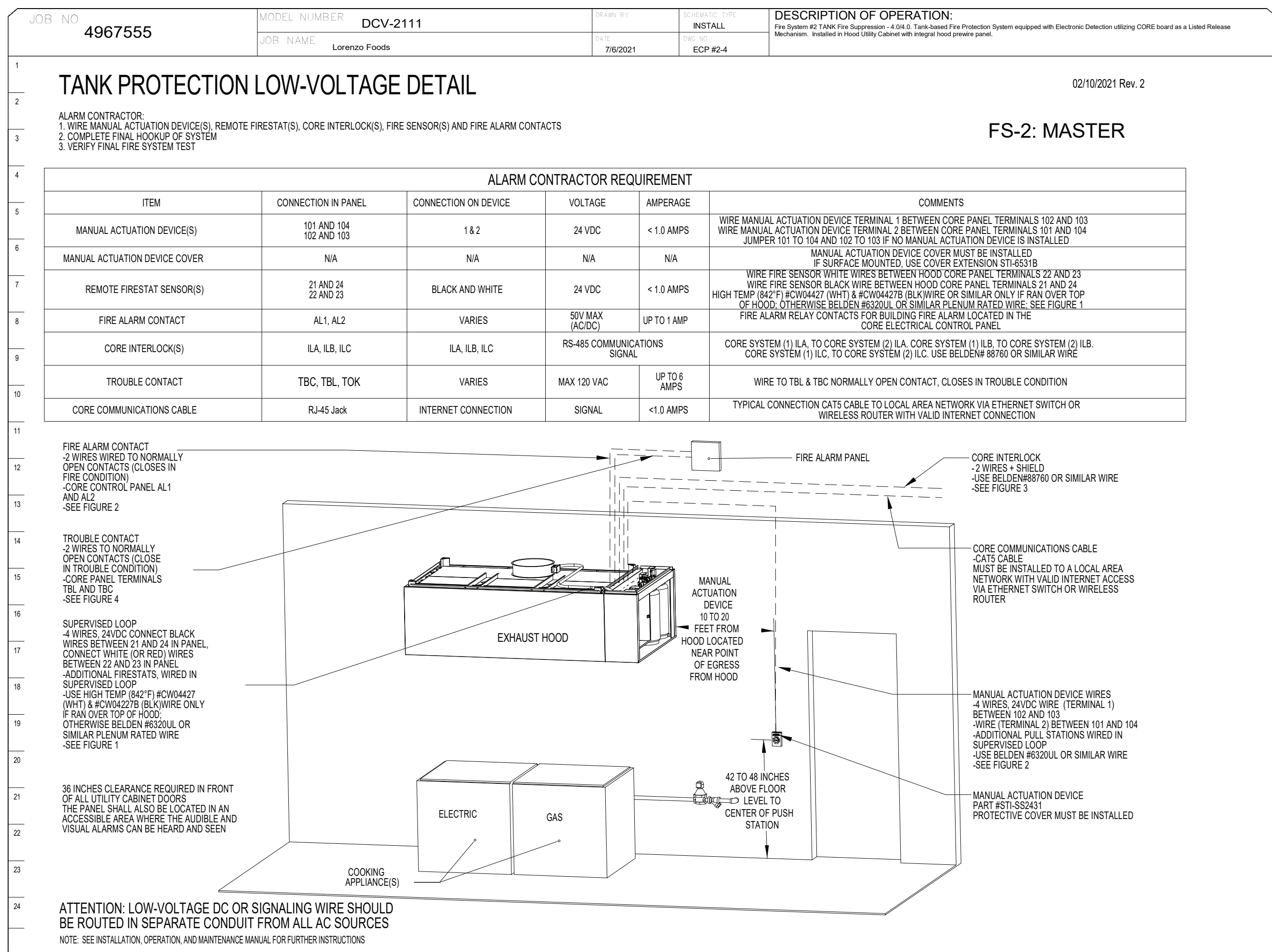
$\frac{3}{4}'' = 1'-0''$





**MASTER DRAWING**

3

drawing name:	
HVAC CAPTIVE AIRE DETAILS	
scale:	As indicated
release date:	05/06/22
drawing date:	09/24/2021
drawn by:	Author
approved by:	Approver
project no.:	2102
drawing no.:	M-502.00
DOB BARCODE:	
Total	





<div style="display: flex; justify-content: space-between;"> <div> <p>Lorenzo Foods</p> <p>TETERBORO, NJ, 07608</p> </div> <div> <p>10/1/2021</p> <p>4967555</p> <p>ZDK</p> <p> <math>\frac{3}{4}'' =</math>  <math>1'-0''</math> </p> <p><b>MASTER DRAWING</b></p> </div> </div>	<div style="display: flex; justify-content: space-between;"> <div> <p><b>CAPTIVE</b></p> <p><b>North New Jersey</b></p> <p><b>Mechanical</b></p> </div> <div>  </div> </div>	<div style="display: flex; justify-content: space-between;"> <div> <p>Summit, N.J. PHONE: (201) 306-6647 FAX: (919) 516-9792 EMAIL: reg138@captiveme.com</p> </div> <div>    </div> </div>
	<div style="display: flex; justify-content: space-between;"> <div> <p>△</p> <p>△</p> <p>△</p> <p>△</p> <p>△</p> </div> <div> <p>△</p> <p>△</p> <p>△</p> <p>△</p> <p>△</p> </div> </div>	

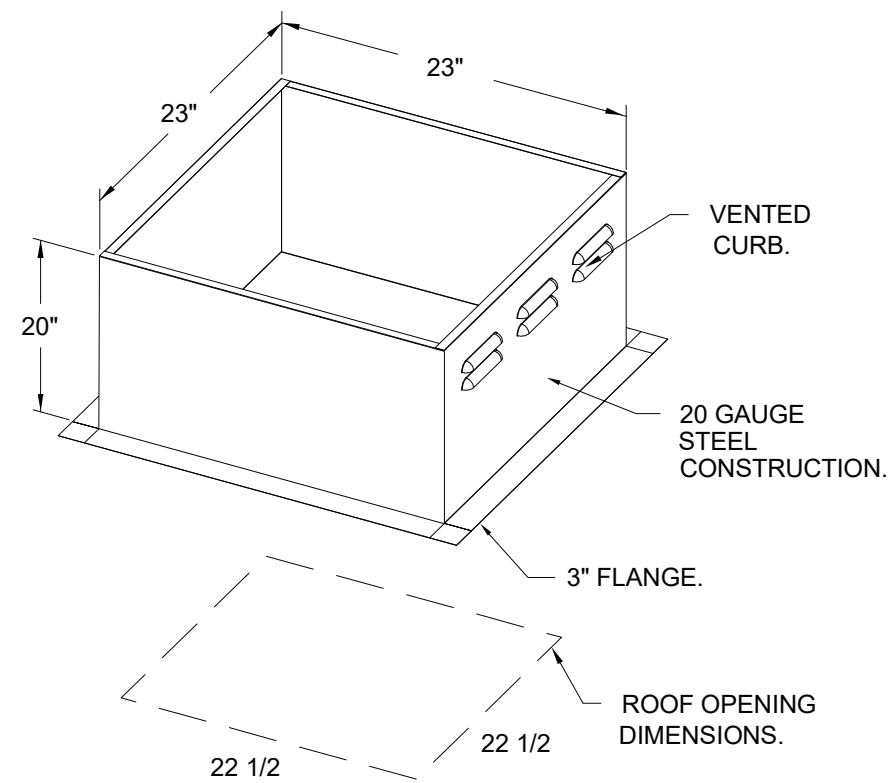






CURB ASSEMBLIES		TAG	WEIGHT	ITEM	SIZE
NO	FAN				
1	#1	KEF-1	14 LBS	CURB	26.500" W X 26.500" X 20.000" ALONG LENGTH, RIGHT VENTED HINGED.
2	#2	KEF-2	14 LBS	CURB	26.500" W X 26.500" X 20.000" ALONG LENGTH, RIGHT VENTED HINGED.
3	#3	KEF-2	14 LBS	CURB	26.500" W X 26.500" X 20.000" ALONG LENGTH, RIGHT VENTED HINGED.
4	#4	KEF-4	14 LBS	CURB	26.500" W X 26.500" X 20.000" ALONG LENGTH, RIGHT VENTED HINGED.
5	#5	KEF-5	14 LBS	CURB	26.500" W X 26.500" X 20.000" ALONG LENGTH, RIGHT VENTED HINGED.
6	#6	KEF-10	36 LBS	CURB	23.000" W X 23.000" X 20.000" ALONG LENGTH, RIGHT VENTED HINGED.
7	#7	DOAS-1	85 LBS	CURB	41.000" W X 27.000" X 20.000" ALONG WIDTH, RIGHT INSULATED.

GREASE BOX.  
ECM WIRING PACKAGE - PWM SIGNAL FROM  
ECPM03 PREWIRED (TELCO MOTOR), CCW  
ROTATION.  
2 YEAR PARTS WARRANTY.



Summit, NJ, PHONE: (201) 308-6647 FAX: (919) 516-8752 EMAIL: [reg138@captliveaire.com](mailto:reg138@captliveaire.com)

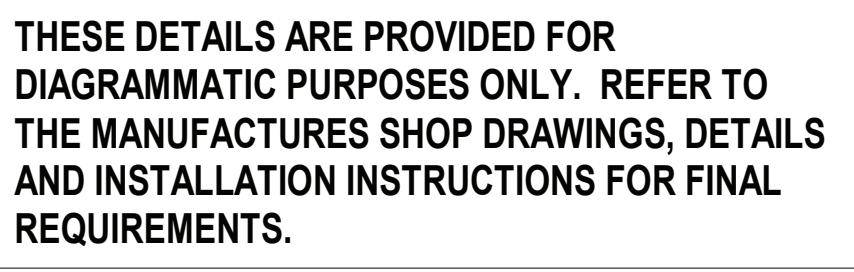
Lorenzo Foods  
TETERBORO, NJ, 07608

### MASTER DRAWING

6

THESE DETAILS ARE PROVIDED FOR  
DIAGRAMMATIC PURPOSES ONLY. REFER TO  
THE MANUFACTURES SHOP DRAWINGS, DETAILS  
AND INSTALLATION INSTRUCTIONS FOR FINAL  
REQUIREMENTS.

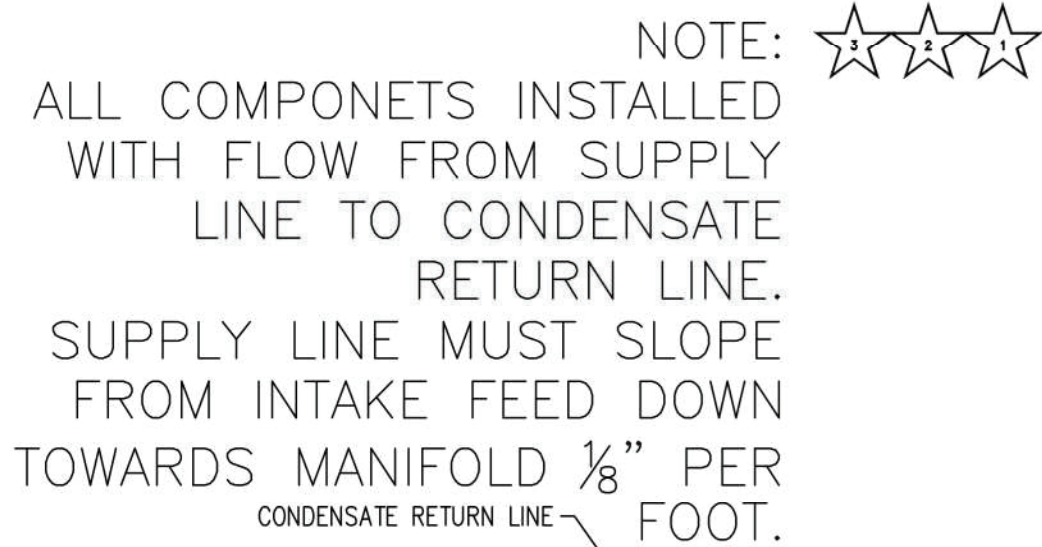





















REVISIONS			
DESCRIPTION	DATE:		
Δ			
Δ			
Δ			
Δ			
		 	
		 	
		 	
		 	
<p><b>North New Jersey Mechanical</b></p> <p>Summit, N.J. · PHONE: (201) 398-8847 FAX: (919) 516-8752 EMAIL: reg138@captivengineers.com</p>		<p>www.captivengine.com</p>	
<p>Lorenzo Foods</p> <p>TETERBORO, NJ, 07608</p>			
<p><b>DATE:</b> 7/6/2021</p>		<p><b>DWG.#:</b> 4967555</p>	
<p><b>DRAWN BY:</b> ZDK</p>		<p><b>SCALE:</b> 3/4" = 1'-0"</p>	
<p><b>MASTER DRAWING</b></p>			
<p><b>SHEET NO.</b></p> <p>2</p>			



★	TWO (2) OPTIPURE QT11+CR WATER FILTERS WITH WINDOW.

PRIOR TO SCHEDULING UDS FOR PRODUCTION  
PLEASE PROVIDE APPROVED SUBMITTAL CUTSHEETS  
ON FINAL KITCHEN EQUIPMENT ASSOCIATED WITH  
THE UDS (NEW & USED) SO THAT CONNECTION  
SIZES, TYPES AND LOCATIONS CAN BE VERIFIED

ANY CHANGES TO SUBMITTAL DRAWING  
MAY AFFECT PRICE AND PRODUCTION TIME  
PLEASE FORWARD CHANGES ASAP

**SYMBOL SCHEDULE**

	COLD WATER
	HOT WATER
	FILTERED WATER
	NATURAL GAS
	PROPANE
	120 VAC 1 PHASE
	208 VAC 1 PHASE
	208 VAC 3 PHASE
	480 VAC 3 PHASE
	STEAM SUPPLY
	STEAM CONDENSATE RETURN

[illegible]

UTILITY DISTRIBUTION SYSTEM EQUIPMENT SCHEDULE																					
EQUIPMENT		ELECTRICAL				CIRCUIT BREAKER			RECEPTACLE		GAS		WATER		STEAM		CONNECTION		NOTES		
CONN#	ITEM	DESCRIPTION	MANUFACTURER	MODEL#	KW	AMP	HP	VOLT	PH	AMPS	POLES	SIZE	MMH	HOT/COLD	SUPPLY	COND.	RETURN	LB/HR		TYPE	LENGTH
1E	135	PRESSURE FRIMER	HENRY FENN	PIG1691	1.2	10.0	-	120	1	20	1	DR20	-	-	-	-	-	-	SUPPLIED	-	GFH BREAKER
1E	135	PRESSURE FRIMER	HENRY FENN	PIG1691	-	-	-	-	-	-	-	-	3/4"	100	-	-	-	-	QUICK DISCONNECT	5'	-
2E	135	PRESSURE FRIMER	HENRY FENN	PIG1691	1.2	10.0	-	120	1	20	1	DR20	-	-	-	-	-	-	SUPPLIED	-	GFH BREAKER
2E	135	PRESSURE FRIMER	HENRY FENN	PIG1691	-	-	-	-	-	-	-	-	3/4"	100	-	-	-	-	QUICK DISCONNECT	5'	-
3E	170	TET SHLEET	VULCAN	VS60	1.1	9.0	-	120	1	20	1	DR20	-	-	-	-	-	-	SUPPLIED	-	GFH BREAKER
3E	170	TET SHLEET	VULCAN	VS60	-	-	-	-	-	-	-	-	3/4"	120	-	-	-	-	QUICK DISCONNECT	5'	-
4E	170	TET SHLEET	VULCAN	VS60	-	-	-	-	-	-	-	-	3/4"	120	-	-	-	-	QUICK DISCONNECT	5'	-
4E	170	TET SHLEET	VULCAN	VS60	-	-	-	-	-	-	-	-	1/2"	-	-	-	-	-	QUICK DISCONNECT	5'	-
4E	201	TET SHLEET	ELECTROLUX	SE7008	1.2	10.0	-	120	1	20	1	DR20	-	-	-	-	-	-	SUPPLIED	-	GFH BREAKER
4E	201	TET SHLEET	ELECTROLUX	SE7008	-	-	-	-	-	-	-	-	3/4"	100	-	-	-	-	QUICK DISCONNECT	5'	-
4E	201	TET SHLEET	ELECTROLUX	SE7008	-	-	-	-	-	-	-	-	1/2"	-	-	-	-	-	QUICK DISCONNECT	5'	-
4E	201	TET SHLEET	ELECTROLUX	SE7008	-	-	-	-	-	-	-	-	3/4"	100	-	-	-	-	QUICK DISCONNECT	5'	-
5E	169	STOCK POT RANGE	WOLF	WSR27	-	-	-	-	-	-	-	-	3/4"	220	-	-	-	-	QUICK DISCONNECT	5'	-
6E	102	TEN EYE RANGE	VULCAN	VS55-108	0.5	4.0	-	120	1	20	1	DR20	-	-	-	-	-	-	SUPPLIED	-	GFH BREAKER
6E	102	TEN EYE RANGE	VULCAN	VS55-108	-	-	-	-	-	-	-	-	1"	358	-	-	-	-	QUICK DISCONNECT	5'	-
7E	215	COMBI OVEN	ALTO-SHAAM	CTP20-205	2.0	9.6	-	208	3	15	3	-	-	-	-	-	-	-	DIRECT	8'	CONDUIT & WIRE
7E	215	COMBI OVEN	ALTO-SHAAM	CTP20-205	-	-	-	-	-	-	-	-	3/4"	266	-	-	-	-	QUICK DISCONNECT	5'	-
8E	215	COMBI OVEN	ALTO-SHAAM	CTP20-205	-	-	-	-	-	-	-	-	3/4"	-	-	-	-	-	QUICK DISCONNECT	5'	FILTERED
8E	215	COMBI OVEN	ALTO-SHAAM	CTP20-205	-	-	-	-	-	-	-	-	3/4"	-	-	-	-	-	QUICK DISCONNECT	5'	FILTERED
8E	215	COMBI OVEN	ALTO-SHAAM	CTP20-205	2.0	9.6	-	208	3	15	3	-	-	-	-	-	-	-	DIRECT	8'	CONDUIT & WIRE
8E	215	COMBI OVEN	ALTO-SHAAM	CTP20-205	-	-	-	-	-	-	-	-	3/4"	266	-	-	-	-	QUICK DISCONNECT	5'	-
8E	215	COMBI OVEN	ALTO-SHAAM	CTP20-205	-	-	-	-	-	-	-	-	3/4"	-	-	-	-	-	QUICK DISCONNECT	5'	-

REVISIONS	
DESCRIPTION	DATE:
△	
△	
△	
△	

**North New Jersey Mechanical**  
Summit, NJ, PHONE: (201) 308-6647 FAX: (919) 516-8752 EMAIL: reg138@captivaire.com

**SHEET NO.**  
3

Total	
-------	--

5/6/2022 5:08:03 PM



IMPORTANT SPECIAL UDS PARTS/NOTES	

UDS CONSTRUCTION TO BE 16 GA., TYPE 304 STAINLESS STEEL

UTILITY DISTRIBUTION SYSTEM MODEL UDI IS LISTED UNDER ETL FILE NUMBER 5054803 CONFORMS TO UL STD 891 CERTIFIED TO CAN/CSA C22.2 No. 31-M89

PRIOR TO SCHEDULING UDS FOR PRODUCTION PLEASE PROVIDE APPROVED SUBMITTAL CUTSHEETS ON FINAL KITCHEN EQUIPMENT ASSOCIATED WITH THE UDS (NEW & USED) SO THAT CONNECTION SIZES, TYPES AND LOCATIONS CAN BE VERIFIED

ANY CHANGES TO SUBMITTAL DRAWING MAY AFFECT PRICE AND PRODUCTION TIME PLEASE FORWARD CHANGES ASAP

-----NOTE-----  
NEC REQUIRES 36" OF FIELD CLEARANCE IN FRONT OF CIRCUIT BREAKERS FOR ACCESS

SYMBOL SCHEDULE	
○	NEW WATER
●	EXISTING WATER
○	NEW GAS
●	EXISTING GAS
①	120 VOLT 1 PHASE
②	120 VOLT 2 PHASE
③	240 VOLT 1 PHASE
④	240 VOLT 2 PHASE
⑤	240 VOLT 3 PHASE
⑥	240 VOLT 4 PHASE
⑦	240 VOLT 5 PHASE
⑧	240 VOLT 6 PHASE
⑨	240 VOLT 7 PHASE
⑩	240 VOLT 8 PHASE
⑪	240 VOLT 9 PHASE
⑫	240 VOLT 10 PHASE
⑬	240 VOLT 11 PHASE
⑭	240 VOLT 12 PHASE
⑮	240 VOLT 13 PHASE
⑯	240 VOLT 14 PHASE
⑰	240 VOLT 15 PHASE
⑱	240 VOLT 16 PHASE
⑲	240 VOLT 17 PHASE
⑳	240 VOLT 18 PHASE
㉑	240 VOLT 19 PHASE
㉒	240 VOLT 20 PHASE
㉓	240 VOLT 21 PHASE
㉔	240 VOLT 22 PHASE
㉕	240 VOLT 23 PHASE
㉖	240 VOLT 24 PHASE
㉗	240 VOLT 25 PHASE
㉘	240 VOLT 26 PHASE
㉙	240 VOLT 27 PHASE
㉚	240 VOLT 28 PHASE
㉛	240 VOLT 29 PHASE
㉜	240 VOLT 30 PHASE
㉝	240 VOLT 31 PHASE
㉞	240 VOLT 32 PHASE
㉟	240 VOLT 33 PHASE
㊱	240 VOLT 34 PHASE
㊲	240 VOLT 35 PHASE
㊳	240 VOLT 36 PHASE
㊴	240 VOLT 37 PHASE
㊵	240 VOLT 38 PHASE
㊶	240 VOLT 39 PHASE
㊷	240 VOLT 40 PHASE
㊸	240 VOLT 41 PHASE
㊹	240 VOLT 42 PHASE
㊺	240 VOLT 43 PHASE
㊻	240 VOLT 44 PHASE
㊼	240 VOLT 45 PHASE
㊽	240 VOLT 46 PHASE
㊾	240 VOLT 47 PHASE
㊿	240 VOLT 48 PHASE

STANDARD FLAG NOTES

1. ELECTRICAL SERVICE FROM ABOVE; SEE SCHEDULE FOR DETAILS PROVIDED BY ELECTRICAL CONTRACTOR

2. 120V/240V/480V DEREGISTERED ELECTRICAL CIRCUIT INTO UDS TERMINALS "H1" NOT FOR FIELD/PLANT CONTROL; PROVIDED BY ELECTRICAL CONTRACTOR; SEE TOURNAMENT BELOW

3. 2-WIRE ELECTRICAL CIRCUIT FROM HERS CONTROL PACKAGE TERMINALS "GAS, ST & KTS" TO UDS LINE TERMINALS "GAS, ST & KTS" FOR UDS SHUT DOWN IN A FIRE CONDITION; PROVIDED BY ELECTRICAL CONTRACTOR; SEE SCHEMATIC BELOW

4. GAS SERVICE FROM ABOVE; SEE SCHEDULE FOR SERVICE SIZE AND STYLE PROVIDED BY PLUMBING CONTRACTOR

5. SERVICE MAIN BREAKER W/SHUNT TRIP AND RESET HANDLE; SEE SCHEDULE FOR DETAILS

6. STATUS INDICATOR LIGHTS

7. EMERGENCY KILL SWITCH

8. DO RECEPTACLE W/ BREAKER & WEATHERPROOF COVER

9. ELECTRICAL LOAD CENTER WITH INDIVIDUAL CIRCUIT BREAKERS

10. ELECTRICAL WIRING TO APPLIANCES

11. ELECTRICAL CONNECTION W/WEATHERPROOF COVER AS SPECIFIED ON THE EQUIPMENT SCHEDULE; SEE THIS SHEET

12. PLUMBING CONNECTION AS SPECIFIED ON THE EQUIPMENT SCHEDULE; SEE THIS SHEET

13. MANUAL SHUT OFF VALVE

14. 120V ELECTRICAL GAS VALVE

15. REMOVABLE ACCESS DOORS

UTILITY DISTRIBUTION SYSTEM EQUIPMENT SCHEDULE																									
		ELECTRICAL										CIRCUIT BREAKER		RECEPTACLE		GAS		WATER		STEAM		CONNECTION		NOTES	
CONTR.#	ITEM	DESCRIPTION	MANUFACTURER	MODEL #	KW	AMPS	1PH	VOLTS	PH	AMPS	POLES	FASE #	SIZE	MMH	HOT	COLD	SUPPLY	CONV	RETURN	LEDSH	TYPE	LENGTH			
1E	125	DBL CONV. OVEN	VULCAN	VC35SD	0.9	7.7	-	-	-	120	1	20	1	DR20	-	-	-	-	-	-	-	SUPPLIED	-	-	GFI BREAKER
1E1	125	DBL CONV. OVEN	VULCAN	VC35SD	0.9	7.7	-	-	-	120	1	20	1	DR20	-	-	-	-	-	-	-	SUPPLIED	-	-	GFI BREAKER
1E2	125	DBL CONV. OVEN	VULCAN	VC35SD	-	-	-	-	-	-	-	-	3/4"	50	-	-	-	-	-	-	-	QUICK DISCONNECT	5'	-	
1E3	125	DBL CONV. OVEN	VULCAN	VC35SD	-	-	-	-	-	-	-	-	3/4"	50	-	-	-	-	-	-	-	QUICK DISCONNECT	5'	-	
1E4	125	DBL CONV. OVEN	VULCAN	VC35SD	0.9	7.7	-	-	-	120	1	20	1	DR20	-	-	-	-	-	-	-	SUPPLIED	-	-	GFI BREAKER
1E5	125	DBL CONV. OVEN	VULCAN	VC35SD	0.9	7.7	-	-	-	120	1	20	1	DR20	-	-	-	-	-	-	-	SUPPLIED	-	-	GFI BREAKER
1E6	125	DBL CONV. OVEN	VULCAN	VC35SD	-	-	-	-	-	-	-	-	3/4"	50	-	-	-	-	-	-	-	QUICK DISCONNECT	5'	-	
1E7	125	DBL CONV. OVEN	VULCAN	VC35SD	-	-	-	-	-	-	-	-	3/4"	50	-	-	-	-	-	-	-	QUICK DISCONNECT	5'	-	
1E8	125	DBL CONV. OVEN	VULCAN	VC35SD	0.9	7.7	-	-	-	120	1	20	1	DR20	-	-	-	-	-	-	-	SUPPLIED	-	-	GFI BREAKER
1E9	125	DBL CONV. OVEN	VULCAN	VC35SD	0.9	7.7	-	-	-	120	1	20	1	DR20	-	-	-	-	-	-	-	SUPPLIED	-	-	GFI BREAKER
1E10	125	DBL CONV. OVEN	VULCAN	VC35SD	-	-	-	-	-	-	-	-	3/4"	50	-	-	-	-	-	-	-	QUICK DISCONNECT	5'	-	
1E11	125	DBL CONV. OVEN	VULCAN	VC35SD	-	-	-	-	-	-	-	-	3/4"	50	-	-	-	-	-	-	-	QUICK DISCONNECT	5'	-	
1E12	125	DBL CONV. OVEN	VULCAN	VC35SD	0.9	7.7	-	-	-	120	1	20	1	DR20	-	-	-	-	-	-	-	SUPPLIED	-	-	GFI BREAKER
1E13	125	DBL CONV. OVEN	VULCAN	VC35SD	0.9	7.7	-	-	-	120	1	20	1	DR20	-	-	-	-	-	-	-	SUPPLIED	-	-	GFI BREAKER
1E14	125	DBL CONV. OVEN	VULCAN	VC35SD	-	-	-	-	-	-	-	-	3/4"	50	-	-	-	-	-	-	-	QUICK DISCONNECT	5'	-	
1E15	125	DBL CONV. OVEN	VULCAN	VC35SD	-	-	-	-	-	-	-	-	3/4"	50	-	-	-	-	-	-	-	QUICK DISCONNECT	5'	-	
1E16	125	DBL CONV. OVEN	VULCAN	VC35SD	0.9	7.7	-	-	-	120	1	20	1	DR20	-	-	-	-	-	-	-	SUPPLIED	-	-	GFI BREAKER
1E17	125	DBL CONV. OVEN	VULCAN	VC35SD	0.9	7.7	-	-	-	120	1	20	1	DR20	-	-	-	-	-	-	-	SUPPLIED	-	-	GFI BREAKER
1E18	125	DBL CONV. OVEN	VULCAN	VC35SD	-	-	-	-	-	-	-	-	3/4"	50	-	-	-	-	-	-	-	QUICK DISCONNECT	5'	-	
1E19	125	DBL CONV. OVEN	VULCAN	VC35SD	-	-	-	-	-	-	-	-	3/4"	50	-	-	-	-	-	-	-	QUICK DISCONNECT	5'	-	
1E20	125	DBL CONV. OVEN	VULCAN	VC35SD	0.9	7.7	-	-	-	120	1	20	1	DR20	-	-	-	-	-	-	-	SUPPLIED	-	-	GFI BREAKER
1E21	125	DBL CONV. OVEN	VULCAN	VC35SD	0.9	7.7	-	-	-	120	1	20	1	DR20	-	-	-	-	-	-	-	SUPPLIED	-	-	GFI BREAKER
1E22	125	DBL CONV. OVEN	VULCAN	VC35SD	-	-	-	-	-	-	-	-	3/4"	50	-	-	-	-	-	-	-	QUICK DISCONNECT	5'	-	
1E23	125	DBL CONV. OVEN	VULCAN	VC35SD	-	-	-	-	-	-	-	-	3/4"	50	-	-	-	-	-	-	-	QUICK DISCONNECT	5'	-	
1E24	125	DBL CONV. OVEN	VULCAN	VC35SD	0.9	7.7	-	-	-	120	1	20	1	DR20	-	-	-	-	-	-	-	SUPPLIED	-	-	GFI BREAKER
1E25	125	DBL CONV. OVEN	VULCAN	VC35SD	0.9	7.7	-	-	-	120	1	20	1	DR20	-	-	-	-	-	-	-	SUPPLIED	-	-	GFI BREAKER
1E26	125	DBL CONV. OVEN	VULCAN	VC35SD	-	-	-	-	-	-	-	-	3/4"	50	-	-	-	-	-	-	-	QUICK DISCONNECT	5'	-	
1E27	125	DBL CONV. OVEN	VULCAN	VC35SD	-	-	-	-	-	-	-	-	3/4"	50	-	-	-	-	-	-	-	QUICK DISCONNECT	5'	-	
1E28	125	DBL CONV. OVEN	VULCAN	VC35SD	0.9	7.7	-	-	-	120	1	20	1	DR20	-	-	-	-	-	-	-	SUPPLIED	-	-	GFI BREAKER
1E29	125	DBL CONV. OVEN	VULCAN	VC35SD	0.9	7.7	-	-	-	120	1	20	1	DR20	-	-	-	-	-	-	-	SUPPLIED	-	-	GFI BREAKER
1E30	125	DBL CONV. OVEN	VULCAN	VC35SD	-	-	-	-	-	-	-	-	3/4"	50	-	-	-	-	-	-	-	QUICK DISCONNECT	5'	-	
1E31	125	DBL CONV. OVEN	VULCAN	VC35SD	-	-	-	-	-	-	-	-	3/4"	50	-	-	-	-	-	-	-	QUICK DISCONNECT	5'	-	
1E32	125	DBL CONV. OVEN	VULCAN	VC35SD	0.9	7.7	-	-	-	120	1	20	1	DR20	-	-	-	-	-	-	-	SUPPLIED	-	-	GFI BREAKER
1E33	125	DBL CONV. OVEN	VULCAN	VC35SD	0.9	7.7	-	-	-	120	1	20	1	DR20	-	-	-	-	-	-	-	SUPPLIED	-	-	GFI BREAKER
1E34	125	DBL CONV. OVEN	VULCAN	VC35SD	-	-	-	-	-	-	-	-	3/4"	50	-	-	-	-	-	-	-	QUICK DISCONNECT	5'	-	
1E35	125	DBL CONV. OVEN	VULCAN	VC35SD	-	-	-	-	-	-	-	-	3/4"	50	-	-	-	-	-	-	-	QUICK DISCONNECT	5'	-	
1E36	125	DBL CONV. OVEN	VULCAN	VC35SD	0.9	7.7	-	-	-	120	1	20	1	DR20	-	-	-	-	-	-	-	SUPPLIED	-	-	GFI BREAKER
1E37	125	DBL CONV. OVEN	VULCAN	VC35SD	0.9	7.7	-	-	-	120	1	20	1	DR20	-	-	-	-	-	-	-	SUPPLIED	-	-	GFI BREAKER
1E38	125	DBL CONV. OVEN	VULCAN	VC35SD	-	-	-	-	-	-	-	-	3/4"	50	-	-	-	-	-	-	-	QUICK DISCONNECT	5'	-	
1E39	125	DBL CONV. OVEN	VULCAN	VC35SD	-	-	-	-	-	-	-	-	3/4"	50	-	-	-	-	-	-	-	QUICK DISCONNECT	5'	-	
1E40	125	DBL CONV. OVEN	VULCAN	VC35SD	0.9	7.7	-	-	-	120	1	20	1	DR20	-	-	-	-	-	-	-	SUPPLIED	-	-	GFI BREAKER
1E41	125	DBL CONV. OVEN	VULCAN	VC35SD	0.9	7.7	-	-	-	120	1	20	1	DR20	-	-	-	-	-	-	-	SUPPLIED	-	-	GFI BREAKER
1E42	125	DBL CONV. OVEN	VULCAN	VC35SD	-	-	-	-	-	-	-	-	3/4"	50	-	-	-	-	-	-	-	QUICK DISCONNECT	5'	-	
1E43	125	DBL CONV. OVEN	VULCAN	VC35SD	-	-	-	-	-	-	-	-	3/4"	50	-	-	-	-	-	-	-	QUICK DISCONNECT	5'	-	
1E44	125	DBL CONV. OVEN	VULCAN	VC35SD	0.9	7.7	-	-	-	120	1	20	1	DR20	-	-	-	-	-	-	-	SUPPLIED	-	-	GFI BREAKER
1E45	125	DBL CONV. OVEN	VULCAN	VC35SD	0.9	7.7	-	-	-	120	1	20	1	DR20	-	-	-	-	-	-	-	SUPPLIED	-	-	GFI BREAKER
1E46	125	DBL CONV. OVEN	VULCAN	VC35SD	-	-	-	-	-	-	-	-	3/4"	50	-	-	-	-	-	-	-	QUICK DISCONNECT	5'	-	
1E47	125	DBL CONV. OVEN	VULCAN	VC35SD	-	-	-	-	-	-	-	-	3/4"	50	-	-	-	-	-	-	-	QUICK DISCONNECT	5'	-	
1E48	125	DBL CONV. OVEN	VULCAN	VC35SD	0.9	7.7	-	-	-	120	1	20	1	DR20	-	-	-	-	-	-	-	SUPPLIED	-	-	GFI BREAKER
1E49	125	DBL CONV. OVEN	VULCAN	VC35SD	0.9	7.7	-	-	-	120	1	20	1	DR20	-	-	-	-	-	-	-	SUPPLIED	-	-	GFI BREAKER
1E50	125	DBL CONV. OVEN	VULCAN	VC35SD	-	-	-	-	-	-	-	-	3/4"	50	-	-	-	-	-	-	-	QUICK DISCONNECT	5'	-	
1E51	125	DBL CONV. OVEN	VULCAN	VC35SD	-	-	-	-	-	-	-	-	3/4"	50	-	-	-	-	-	-	-	QUICK DISCONNECT	5'	-	
1E52	125	DBL CONV. OVEN	VULCAN	VC35SD	0.9	7.7	-	-	-	120	1	20	1	DR20	-	-	-	-	-	-	-	SUPPLIED	-	-	GFI BREAKER
1E53	125	DBL CONV. OVEN	VULCAN	VC35SD	0.9	7.7	-	-	-	120	1	20	1	DR20	-	-	-	-	-	-	-	SUPPLIED	-	-	GFI BREAKER
1E54	125	DBL CONV. OVEN	VULCAN	VC35SD	-	-	-	-	-	-	-	-	3/4"	50	-	-	-	-	-	-	-	QUICK DISCONNECT	5'	-	
1E55	125	DBL CONV. OVEN	VULCAN	VC35SD	-	-	-	-	-	-	-	-	3/4"	50	-	-	-	-	-	-	-	QUICK DISCONNECT	5'	-	
1E56	125	DBL CONV. OVEN	VULCAN	VC35SD	0.9	7.7	-	-	-	120	1	20	1	DR20	-	-	-	-	-	-	-	SUPPLIED	-	-	GFI BREAKER
1E57	125	DBL CONV. OVEN	VULCAN	VC35SD	0.9	7.7	-	-	-	120	1	20	1	DR20	-	-	-	-	-	-	-	SUPPLIED	-	-	GFI BREAKER
1E58	125	DBL CONV. OVEN	VULCAN	VC35SD	-	-	-	-	-	-	-	-	3/4"	50	-	-	-	-	-	-	-	QUICK DISCONNECT	5'	-	
1E59	125	DBL CONV. OVEN	VULCAN	VC35SD	-	-	-	-	-	-	-	-	3/4"	50	-	-	-	-	-	-	-	QUICK DISCONNECT	5'	-	
1E60	125	DBL CONV. OVEN	VULCAN	VC35SD	0.9	7.7	-	-	-	120	1	20	1	DR20	-	-	-	-	-	-	-	SUPPLIED	-	-	GFI BREAKER
1E61	125	DBL CONV. OVEN	VULCAN	VC35SD	0.9	7.7	-	-	-	120	1	20	1	DR20	-	-	-	-	-	-	-	SUPPLIED	-	-	GFI BREAKER
1E62	125	DBL CONV. OVEN	VULCAN	VC35SD	-	-	-	-	-	-	-	-	3/4"	50	-	-	-	-	-	-	-	QUICK DISCONNECT	5'	-	
1E63	125	DBL CONV. OVEN	VULCAN	VC35SD	-	-	-	-	-	-	-	-	3/4"	50	-	-	-	-	-	-	-	QUICK DISCONNECT	5'	-	
1E64	125	DBL CONV. OVEN	VULCAN	VC35SD	0.9	7.7	-	-	-	120	1	20	1	DR20	-	-	-	-	-	-	-	SUPPLIED	-	-	GFI BREAKER
1E65	125	DBL CONV. OVEN	VULCAN	VC35SD	0.9	7.7	-	-	-	120	1	20	1	DR20	-	-	-	-	-	-	-	SUPPLIED	-	-	GFI BREAKER
1E66	125	DBL CONV. OVEN	VULCAN	VC35SD	-	-	-	-	-	-	-	-	3/4"	50	-	-	-	-	-	-	-	QUICK DISCONNECT	5'	-	
1E67	125	DBL CONV. OVEN	VULCAN	VC35SD	-	-	-	-	-	-	-	-	3/4"	50	-	-	-	-	-	-	-	QUICK DISCONNECT	5'	-	
1E68	125	DBL CONV. OVEN	VULCAN	VC35SD	0.9	7.7	-	-	-	120	1	20	1	DR20	-	-	-	-	-	-	-	SUPPLIED	-	-	GFI BREAKER
1E69	125	DBL CONV. OVEN	VULCAN	VC35SD	0.9	7.7	-	-	-	120	1	20	1	DR20	-	-	-	-	-	-	-	SUPPLIED	-	-	GFI BREAKER
1E70	125	DBL CONV. OVEN	VULCAN	VC35SD	-	-	-	-	-	-	-	-	3/4"	50	-	-	-	-	-	-	-	QUICK DISCONNECT	5'	-	
1E71	125	DBL CONV. OVEN	VULCAN	VC35SD	-	-	-	-	-	-	-	-	3/4"	50	-	-	-	-	-	-	-	QUICK DISCONNECT	5'	-	

||
||
||



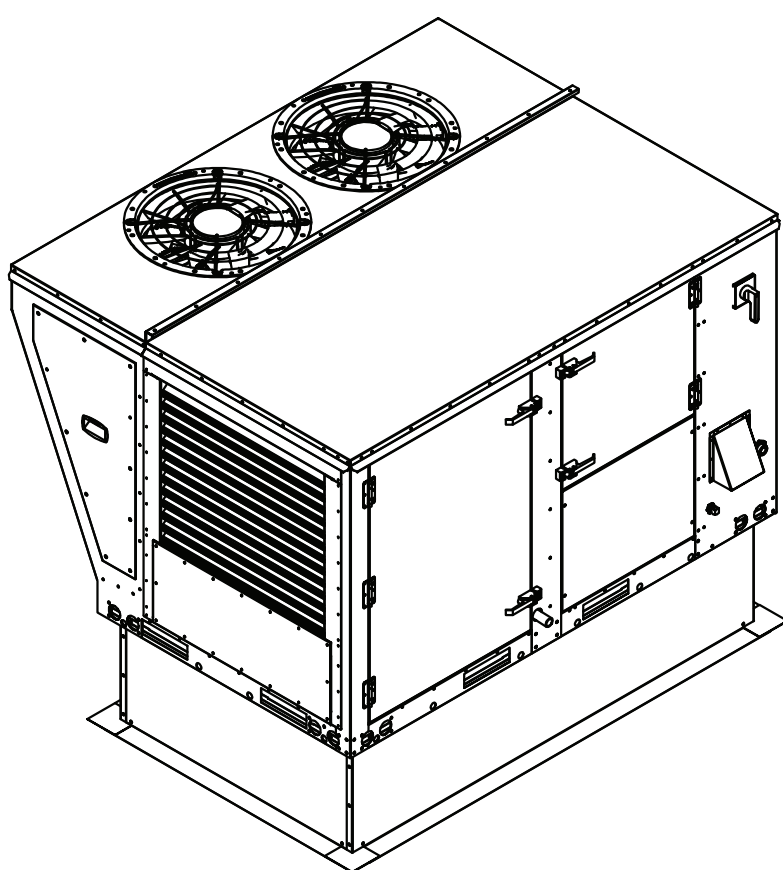






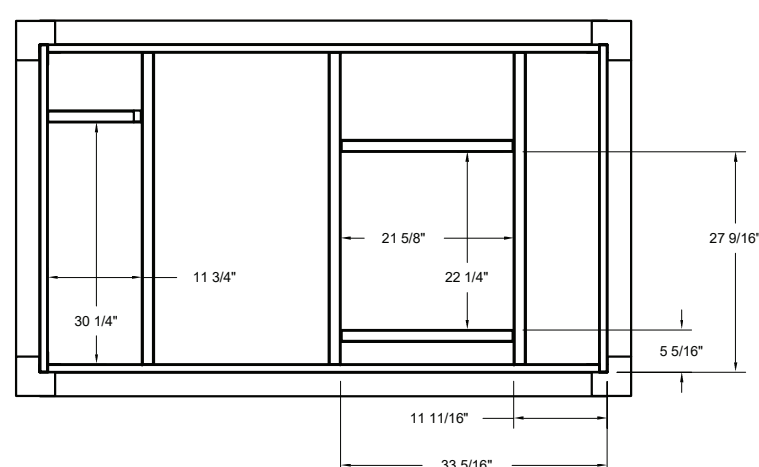
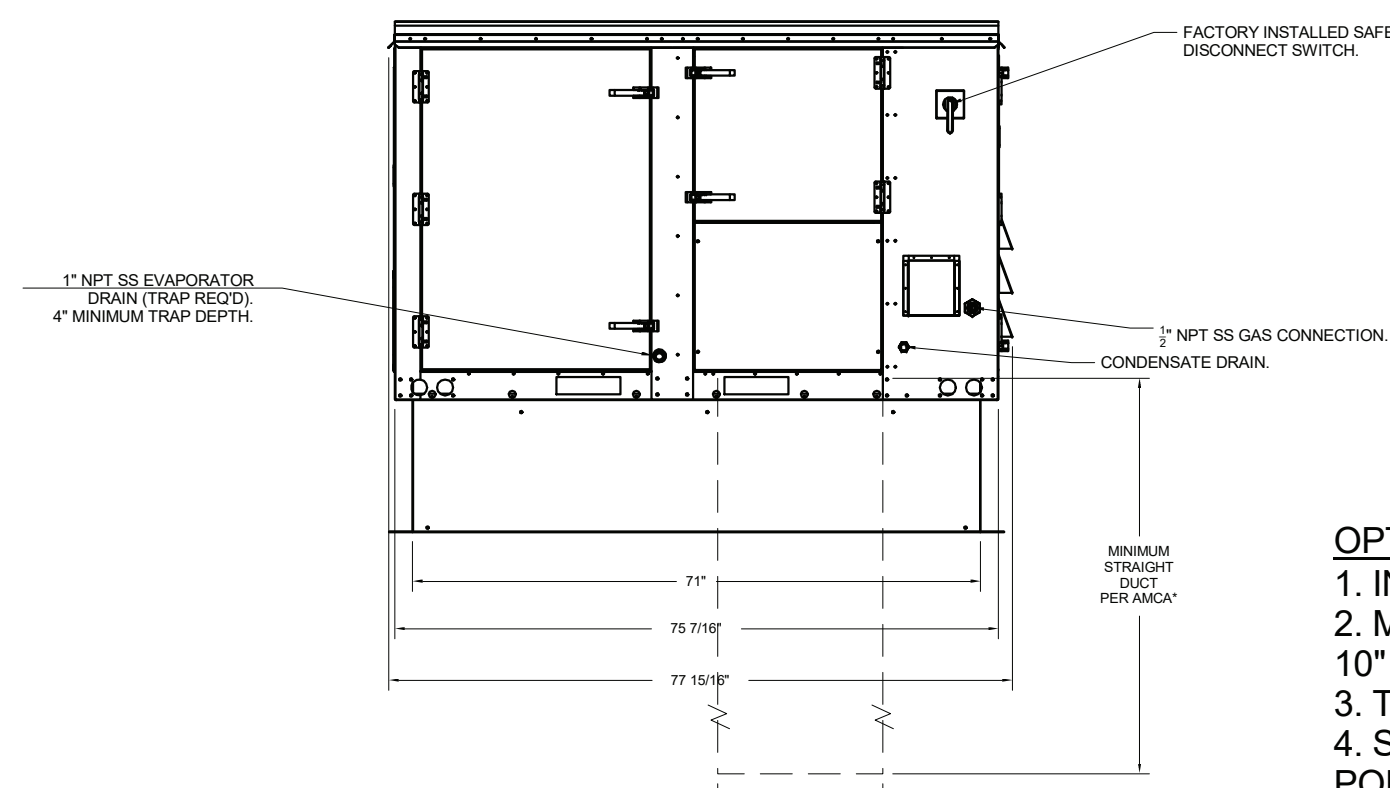
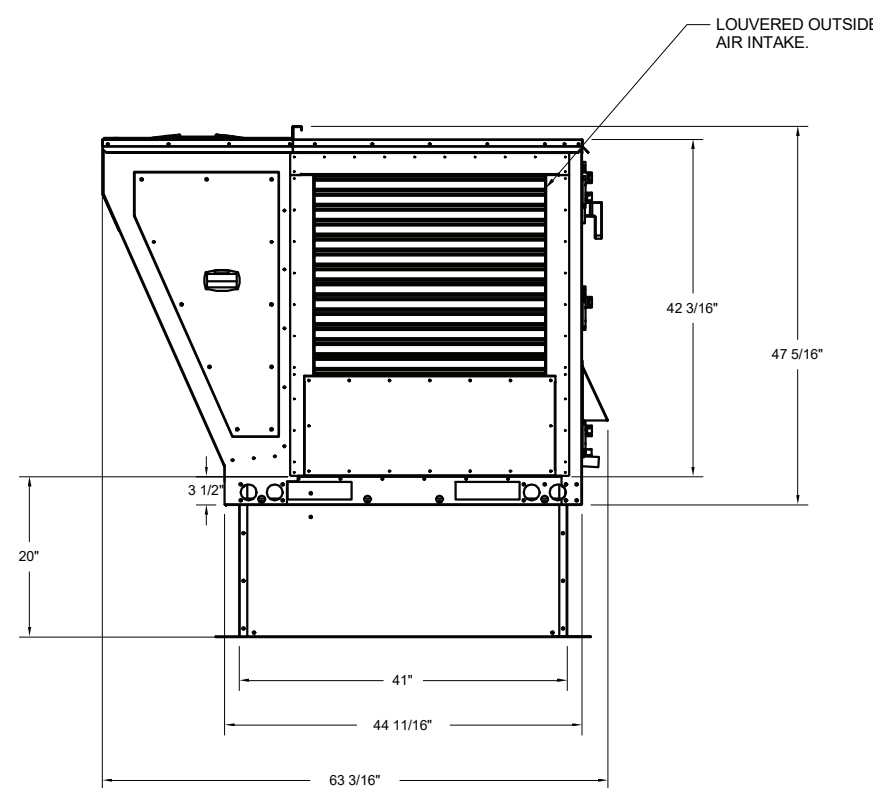
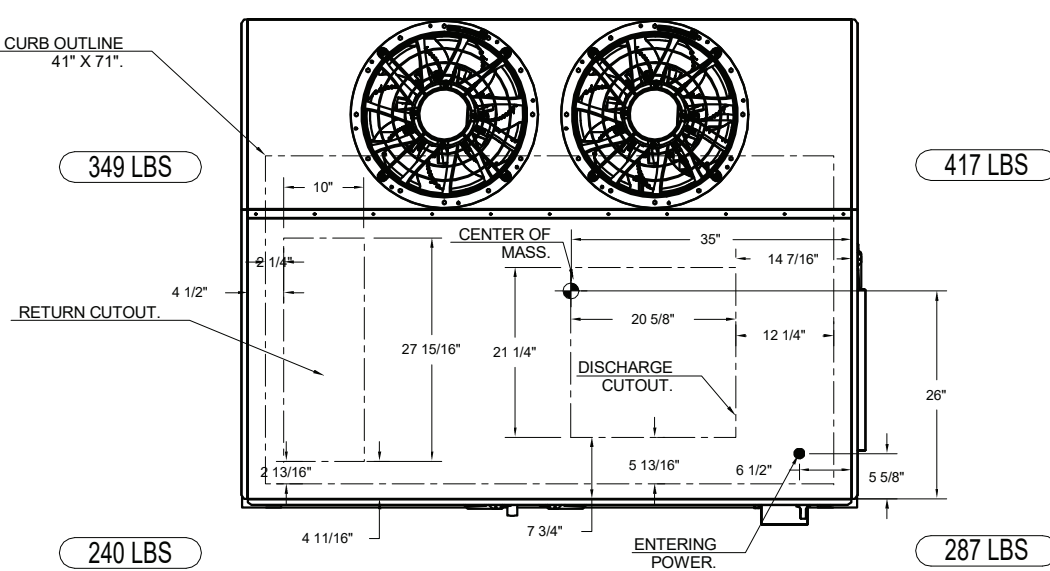


DOAS/RTU HEATING							
SANITIZER UNIT NO	TAG	INPUT BTUs	OUTPUT BTUs	TEMP RISE	REQUIRED INPUT GAS PRESSURE	GAS TYPE	BURNER EFFICIENCY(%)
11	DOAS-1	150000	120000	66°F	7 IN. W.C. - 14 IN. W.C.	NATURAL	80



NOTES:

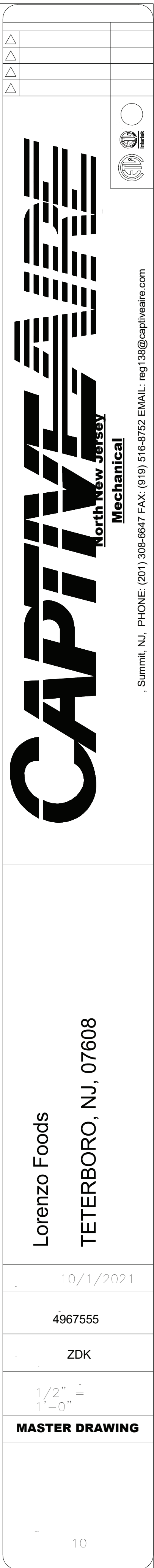
1. DO NOT OBSTRUCT OUTSIDE AIR INLET, OUTSIDE AIR COIL OR OUTSIDE AIR FAN.
2.  DENOTES CORNER WEIGHT.
3. ROOF OPENING MUST BE 2" SMALLER THAN CURB DIMENSIONS IN BOTH DIRECTIONS.



## OPTIONS

3. INLET PRESSURE GAUGE, 0-35".
2. MANIFOLD PRESSURE GAUGE, 0 TO 10" WC, 1 FURNACE.
3. TOTAL CFM MONITORING FOR DOAS.
4. SINGLE POINT ELECTRICAL CONNECTION FOR RTU. QNTY 1 750VA TRANSFORMER USED. IF A NON-DCV PREWIRE CONTROLS THIS UNIT, THE #28, #47, "MA", OR "M" OPTION PREWIRE MUST BE SELECTED. DO NOT PROVIDE SUPPLY STARTER IN PREWIRE.
5. CASLINK BUILDING MONITORING SYSTEM - INTERNET OR CELLULAR CONNECTION REQUIRED.
6. 2" MERV 13 FILTERS FOR SIZE 1 RTU. QTY. 4.
7. 2" MERV 8 FILTERS SIZE 1 RTU. QTY 4.
8. OVERHEAT STAT.
9. VFD FACTORY MOUNTED AND WIRED IN COMMERCIAL CONTROL VESTIBULE FOR RTU.
10. RTU SIZE 1 DOWN DISCHARGE
11. COMMERCIAL SMOKE DETECTOR/ALARM INTERLOCK (SUPPLIED BY OTHERS).
12. CLOGGED FILTER SWITCH WITH NOTIFICATION ON HMI.
13. 6 TON MODULATING COOLING OPTION.
- 208/230V. R410A REFRIGERANT, VARIABLE SPEED COMPRESSOR, ECM CONDENSING FANS
14. 6 TON MODULATING REHEAT OPTION. SPACE DEWPOINT CONTROL.
15. RTU SIZE 1 DOWN RETURN.
16. FREEZE/STAT.
17. VAV PACKAGE W/ MANUAL/DDC CONTROL (571 VFD INCLUDED).
18. RTU FIELD WIRED INTAKE/RETURN DAMPER SWITCH CONTROL.
19. SIZE 1 RTU CURB DUCT HANGER.
20. 5 YEAR ENTIRE UNIT PARTS WARRANTY. 10 YEAR ENTIRE UNIT PARTS WARRANTY WITH REMOTE MONITORING AND CAPTIVE/AEIR SERVICE CONTRACT. 25 YEAR STAINLESS STEEL FURNACE PARTS WARRANTY (SEE ADDITIONAL DETAILS).

THESE DETAILS ARE PROVIDED FOR  
DIAGRAMMATIC PURPOSES ONLY. REFER TO  
THE MANUFACTURES SHOP DRAWINGS, DETAILS  
AND INSTALLATION INSTRUCTIONS FOR FINAL  
REQUIREMENTS.



## GENERAL CONDITIONS NOTE:

THIS DRAWING AND THE DESIGN DESCRIBED HEREIN, INCLUDING THE SPECIFICATIONS, ARE THE EXCLUSIVE PROPERTY OF **ENGINEERING**. WE RESERVE THE RIGHT TO HAVE THIS WORK REPRODUCED, FABRICATED, COPIED, OR MANUFACTURED. THIS DRAWING IS PLACED ON FILE SOLELY FOR YOUR INSPECTION. ACTUAL FABRICATION, CONSTRUCTION OR MANUFACTURING, IS SPECIFICALLY **PROHIBITED** UNLESS ARIAN, ULL, ALL RIGHTS ARE RESERVED. THIS DRAWING IS NOT TO BE REPRODUCED OR HAVE BEEN PROPOSED FILED BY THE COMPANY OR INDIVIDUAL (CONTRACTOR) WITHOUT THE WRITTEN AND SIGNED APPROVAL OF **ENGINEERING**. THIS DRAWING HAS BEEN KNOWLEDGED "FOR CONSTRUCTION". THE CONTRACTOR ASSUMES ALL RESPONSIBILITIES FOR VERIFYING THAT THE DIMENSIONS AND CONDITIONS OF THE PROJECT ARE ACCORDANT TO THIS DRAWING AND APPROPRIATE SPECIFICATIONS. IF THERE IS ANY DISCREPANCY BETWEEN THE DRAWING AND THE ACTUAL CONDITIONS, THE CONTRACTOR SHALL INFORM THE ENGINEER PRIOR TO STARTING THE CONTRACT. IT IS THE EXCLUSIVE RESPONSIBILITY OF THE CONTRACTOR TO VERIFY THE EXISTING CONDITIONS OF THE PROJECT, MUNICIPAL AND STATE RULES AND REGULATIONS. FAILURE OF THE CONTRACTOR TO EXECUTE THE AGREED-UPON PROCEDURES WILL BEAT THE CONTRACTOR'S COSTS. THE CONTRACTOR SHALL BE RESPONSIBLE FOR COMPLIANCE AT HIS OWN EXPENSE. **NO EXCEPTIONS!**


copyright © ENGINEERING


05/06/22	ISSUED FOR	4
	CLIENT REVIEW	
Date	Description	#
Revisions		

KOESTNER ASSOCIATES  
P.O.BOX 514  
Hackensack, NJ 07602

ALLIED ENGINEERING  
730 River Road  
New Milford, NJ 07646

BD ENGINEERING, LLC.  
30 Park Road, Suite 4  
Tinton Falls, NJ 07724

**BD**   
**engineering**



Lorenzo Foods Teterboro

25 CENTRAL AVE  
TETERBORO, NJ, 07608

DOB STAMP:

ISSUED FOR  
REVIEW  
PLANNING BOARD  
BUILDING DEPT  
BID  
CONSTRUCTION

17/05/2025  
BRIAN D. TANNENHAUS  
NJ PROFESSIONAL ENGINEER  
NO. GE 45801  
DATE: 02/24/2022

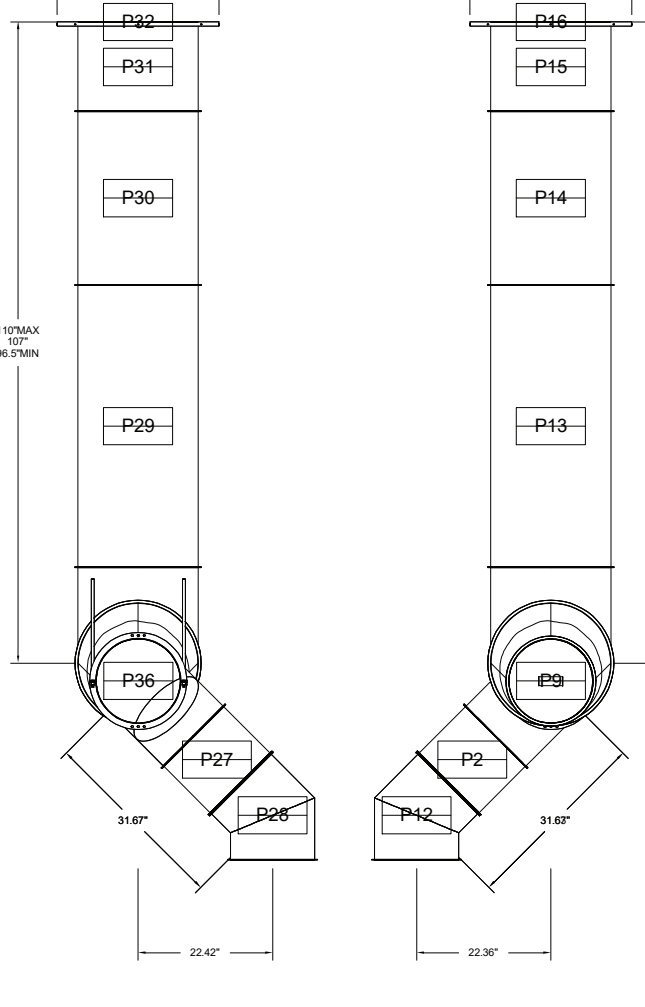
drawing name:	
HVAC CAPTIVE AIRE DETAILS	
scale:	As indicated
release date:	05/06/22
drawing date:	09/24/2021
drawn by:	ZW
approved by:	KF
project no:	2102
drawing no.	
M-513.00	
DOB BARCODE	
Total	



**DO NOT LEAK TEST USING SMOKE BOMBS CONTAINING CHLORINES/CHLORIDES. CONSULT WITH CAPTIVEAIRE FOR PROPER LEAK TESTING METHODS.**



DUCTWORK #2 SIDE VIEW



DUCTWORK #3 FRONT VIEW

12 1/2"

P36

P35

P34

P33

117 1/2" MAX  
112" MIN

33 1/2"

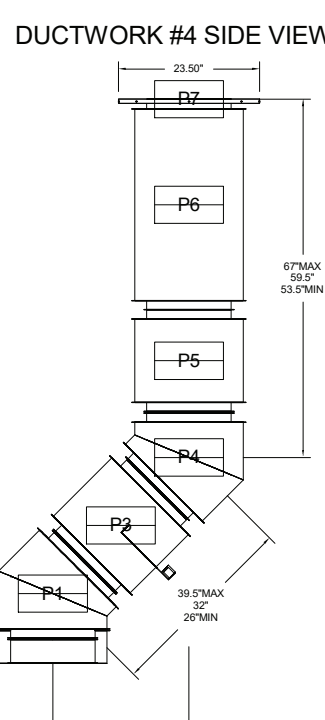
10 1/2"

42 1/2"

17 1/2"



DUCTWORK #4 FRONT VIEW



5/6/2022

C:\Users\eh\Desktop\Garbage Files\\_200066-MEP-2021\_ehBNBJK.rvt