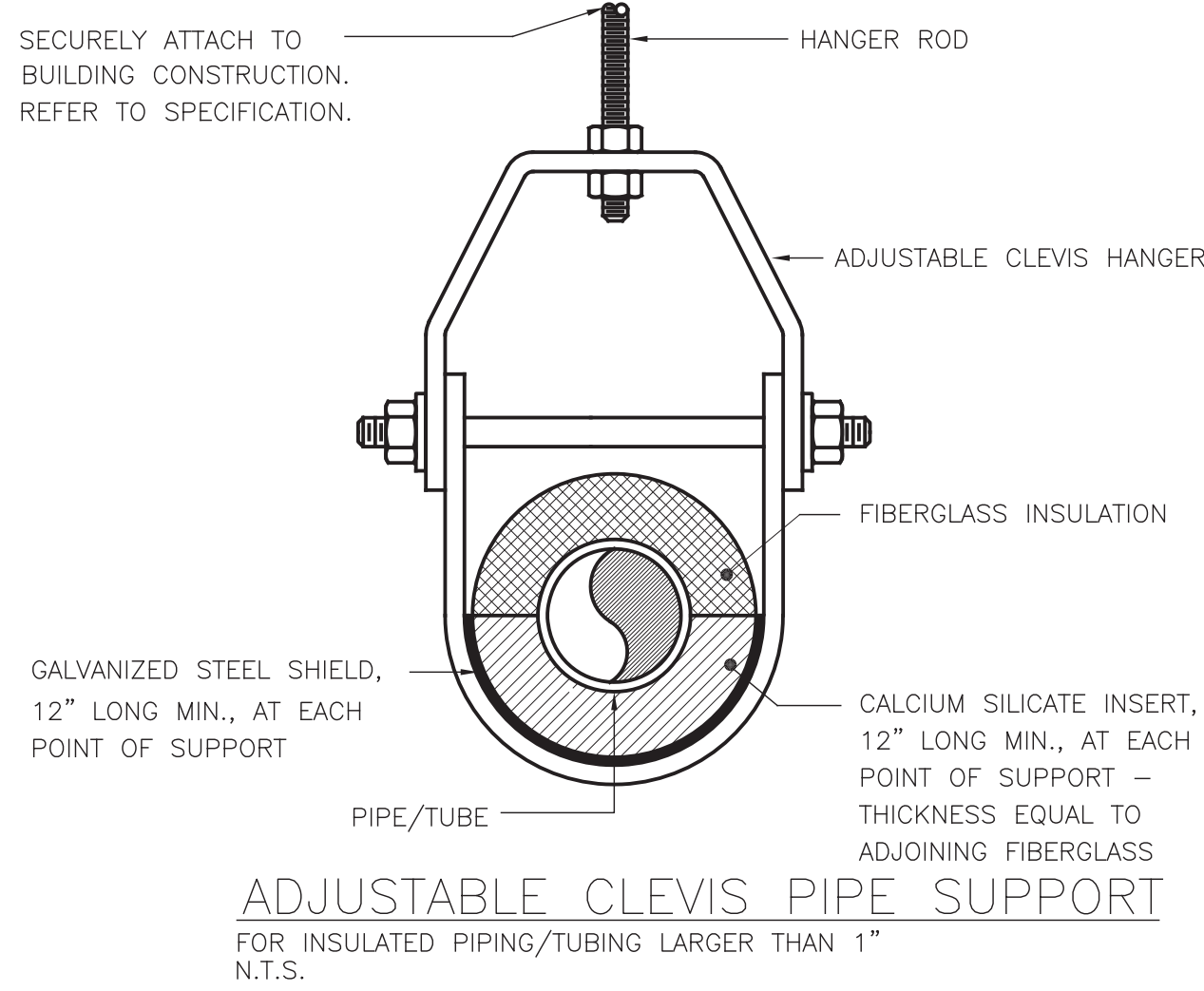
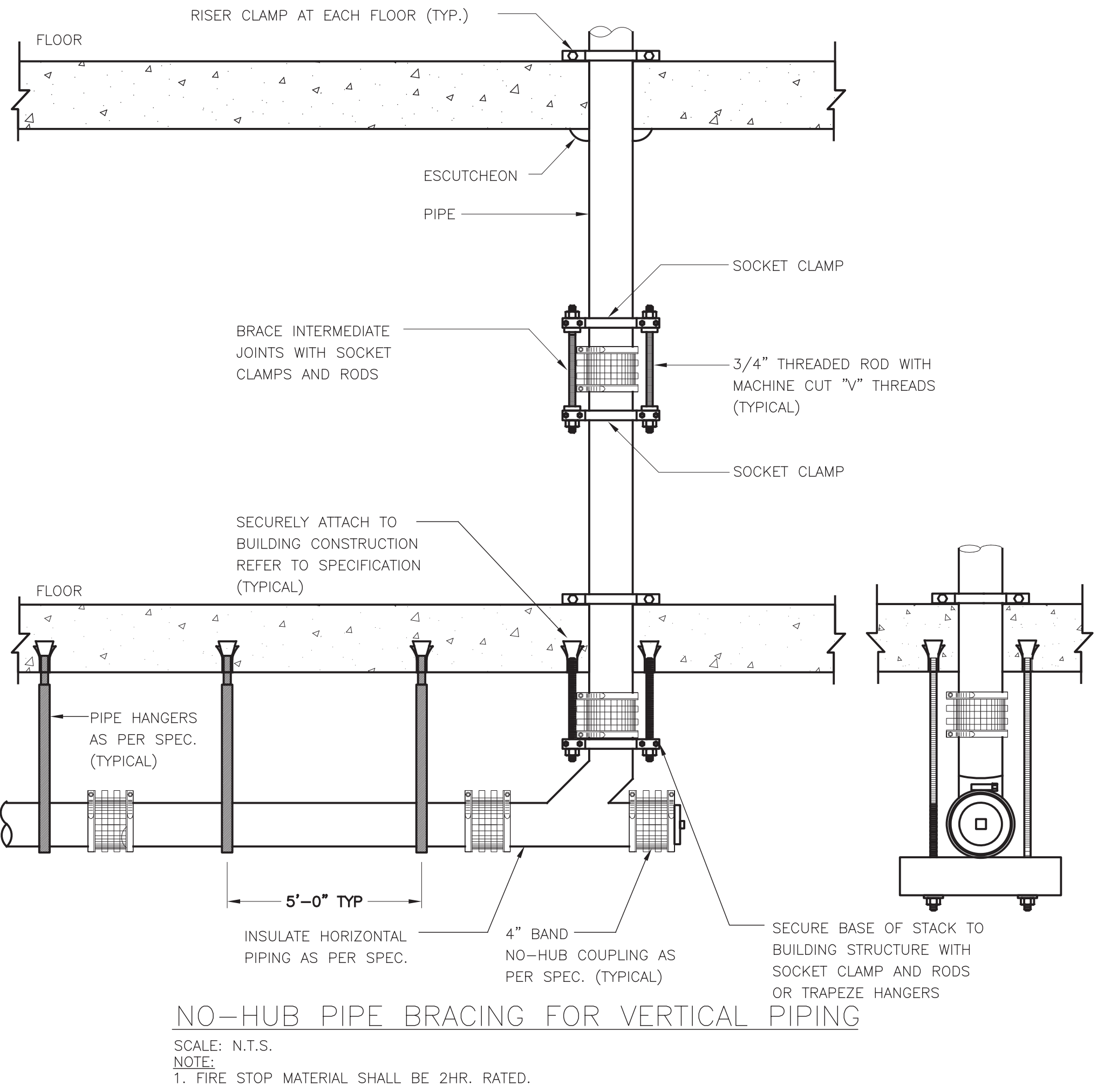
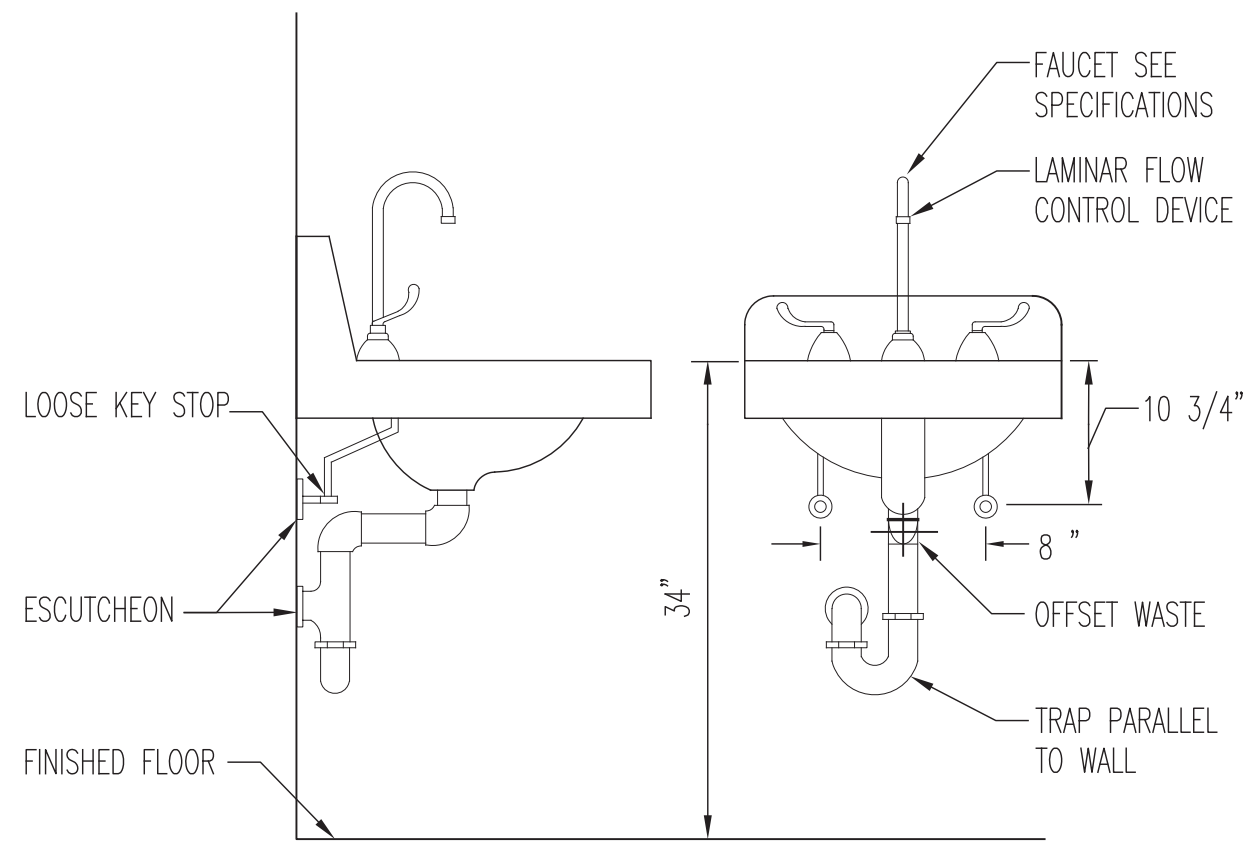
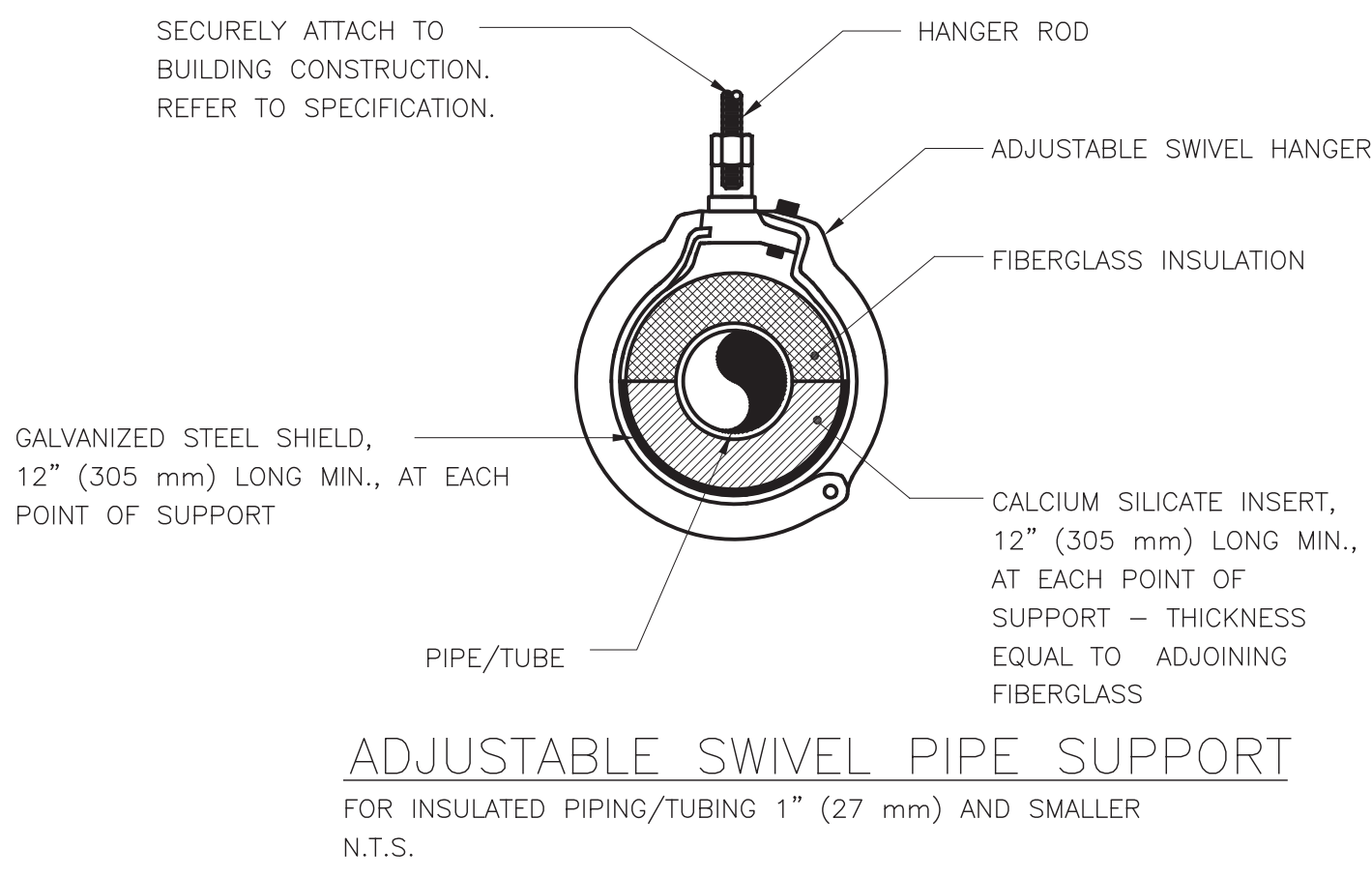
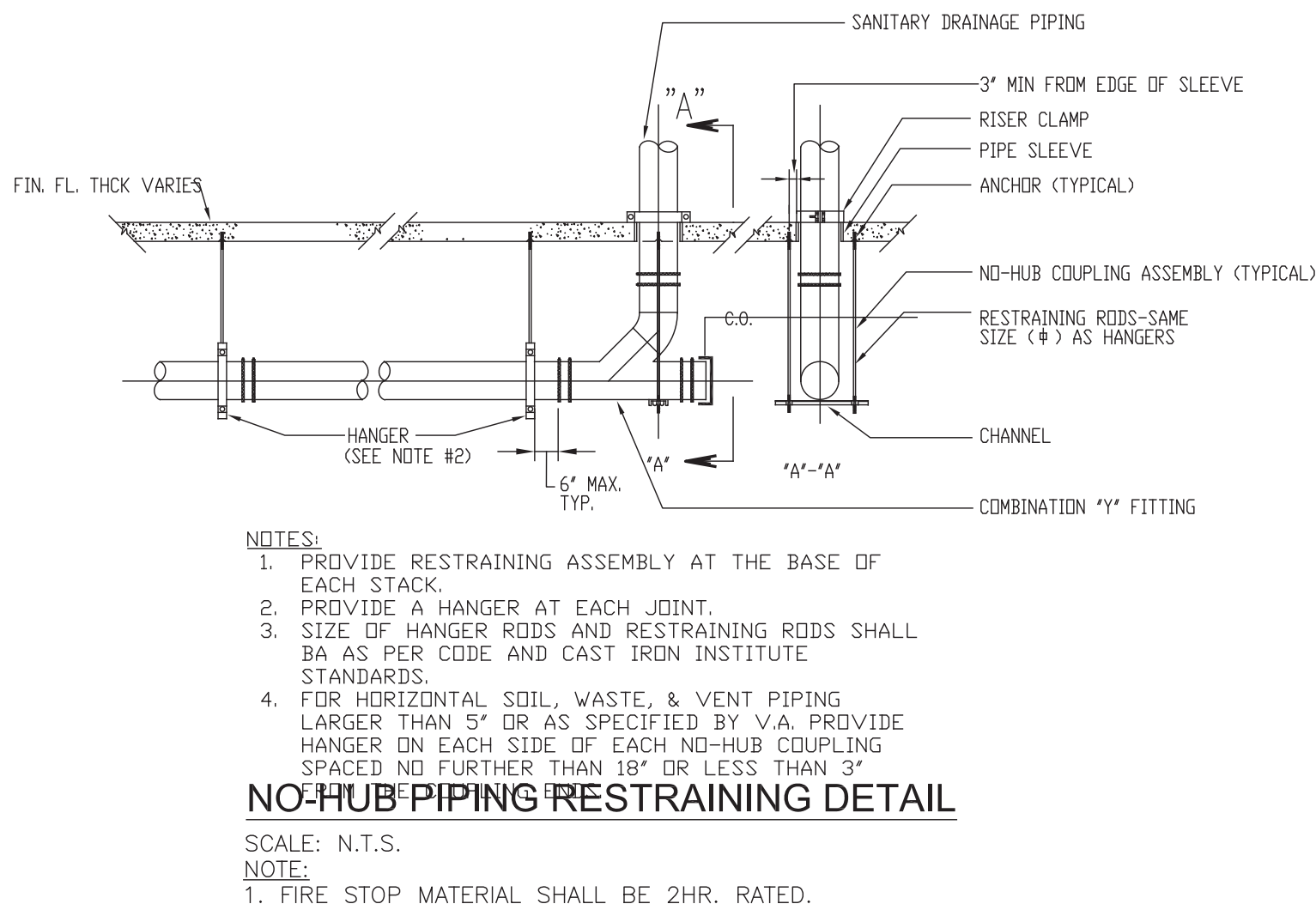
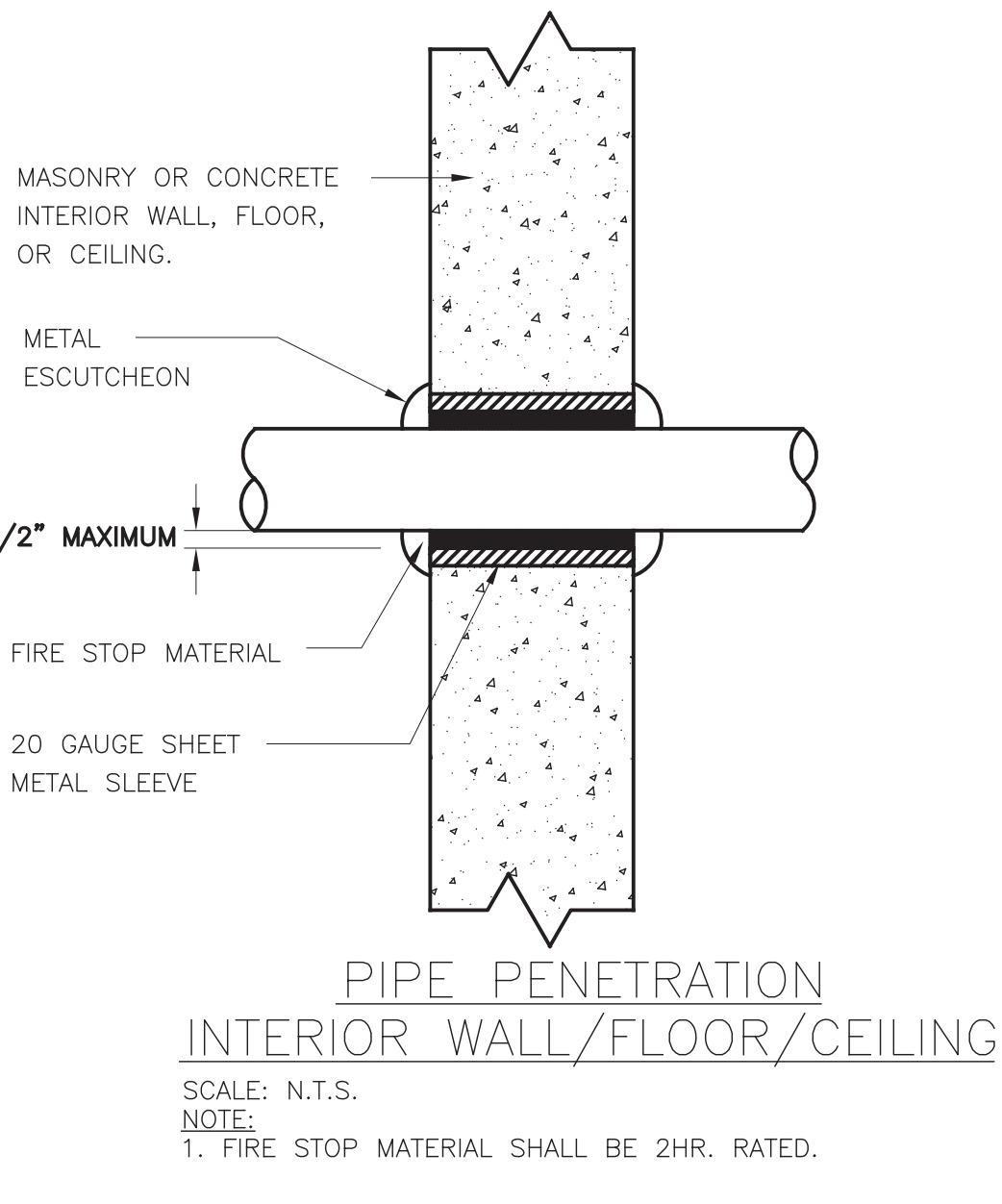
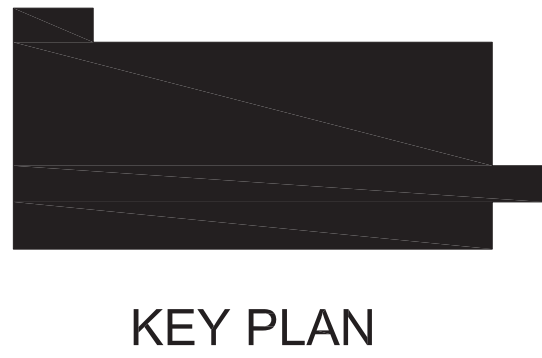
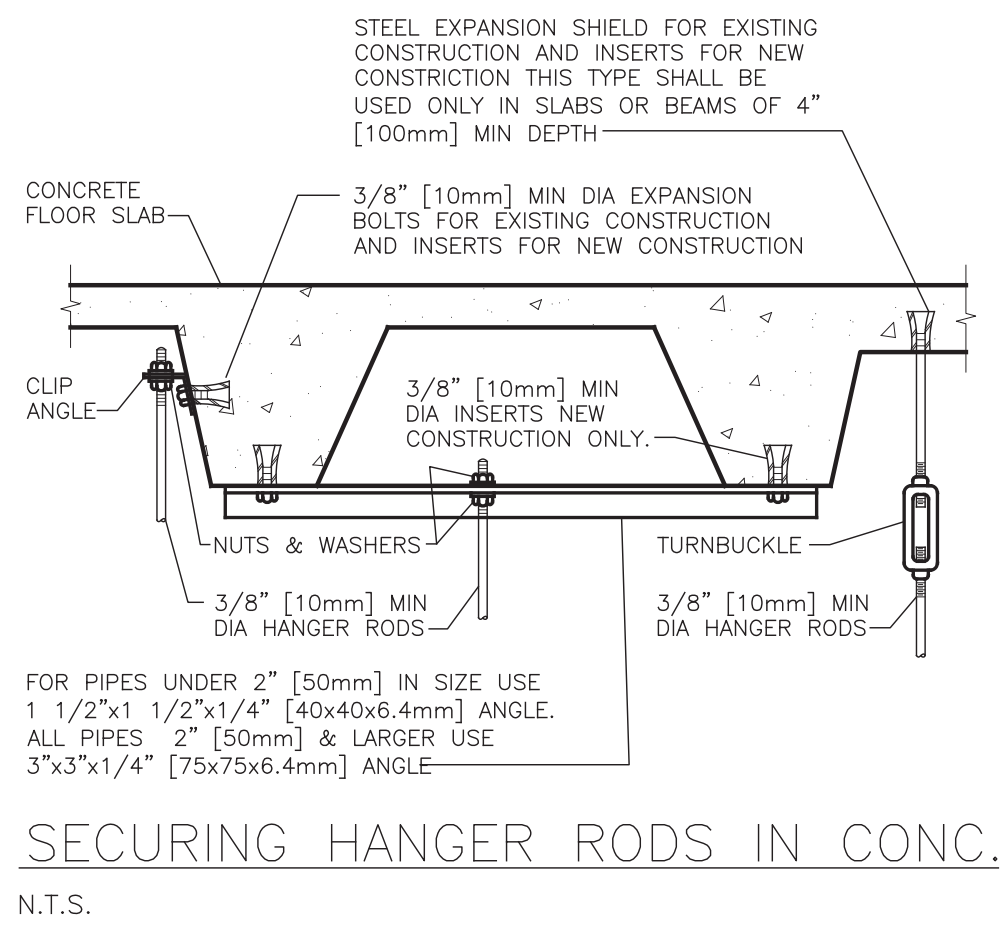
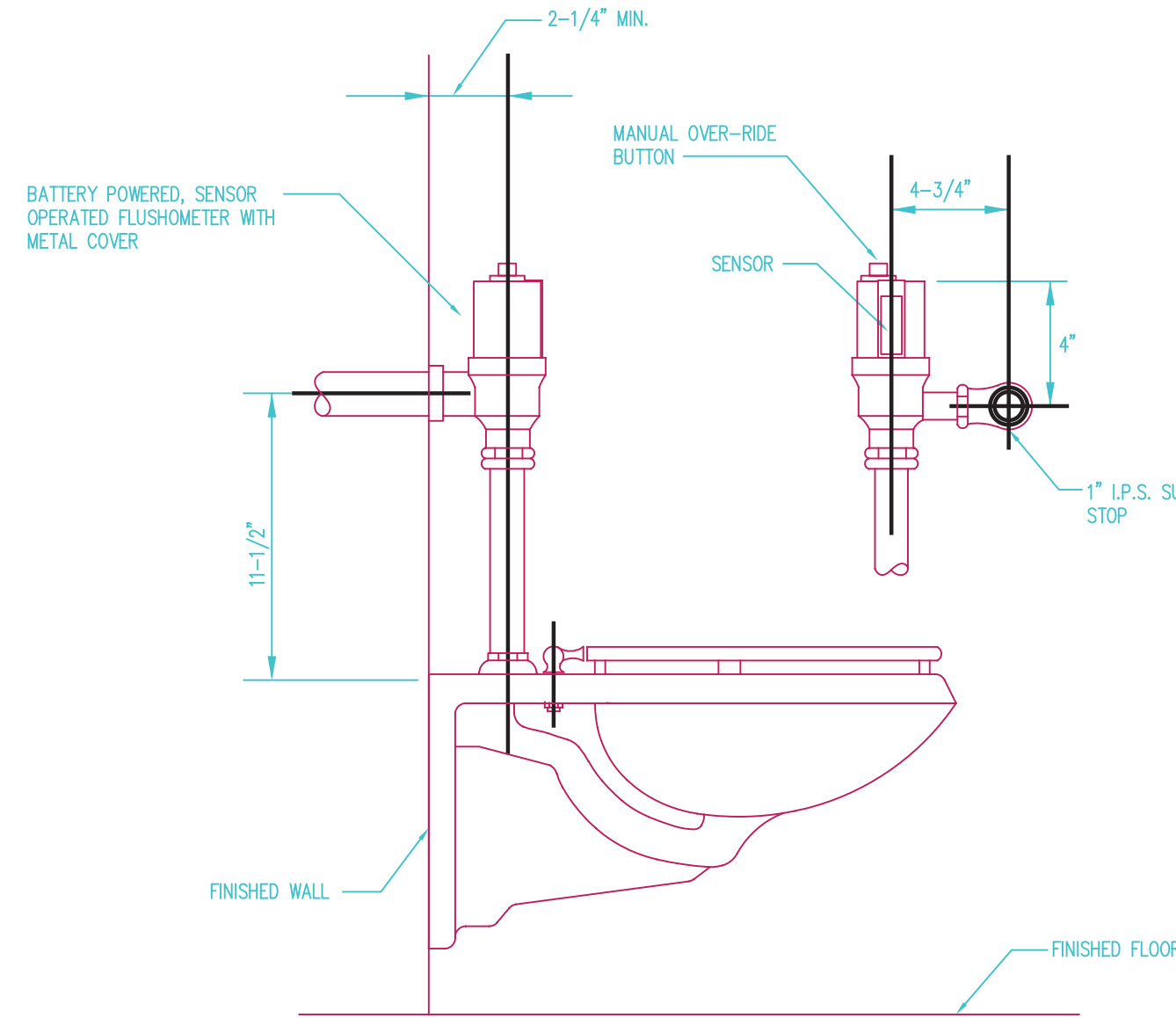
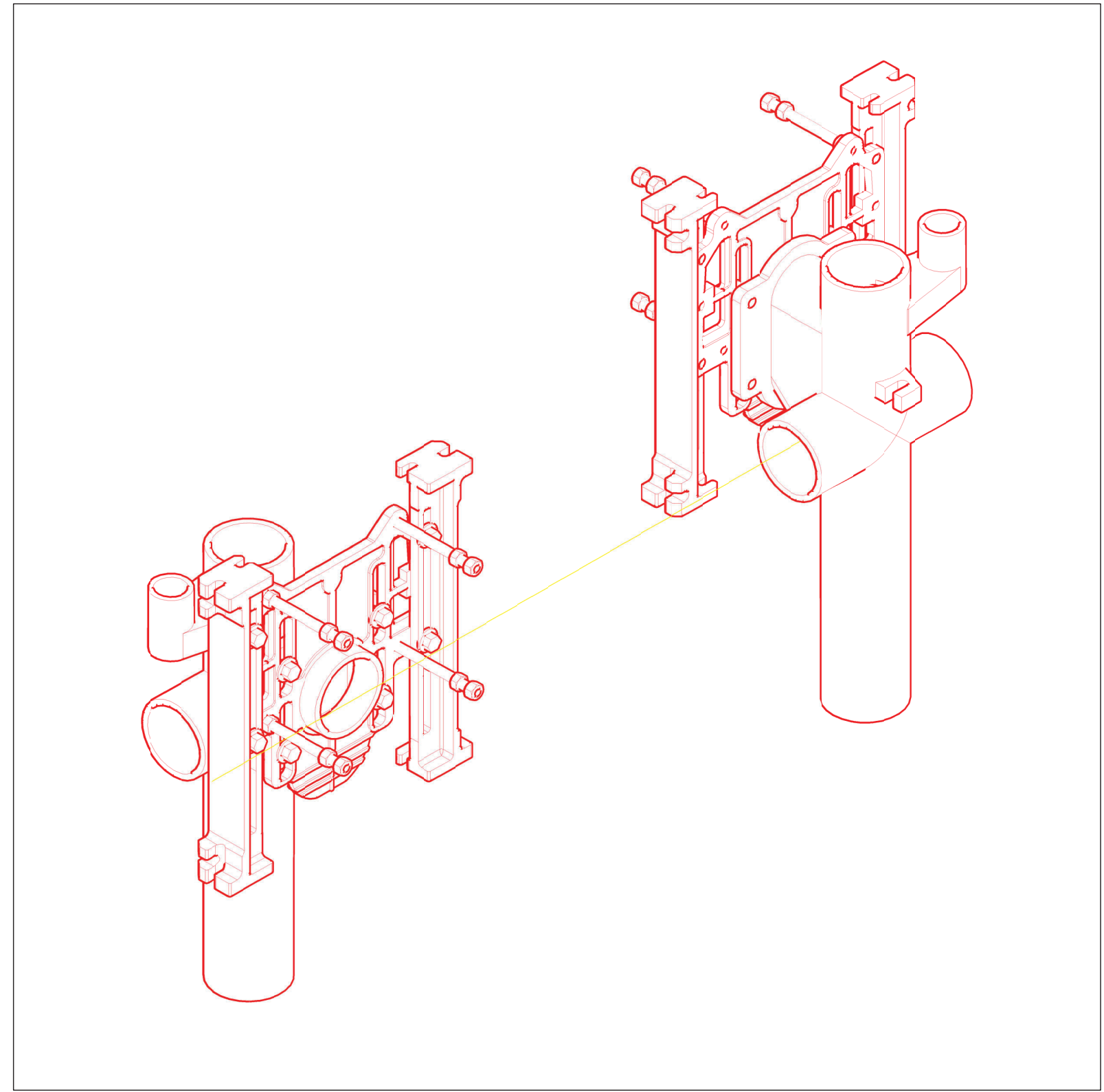
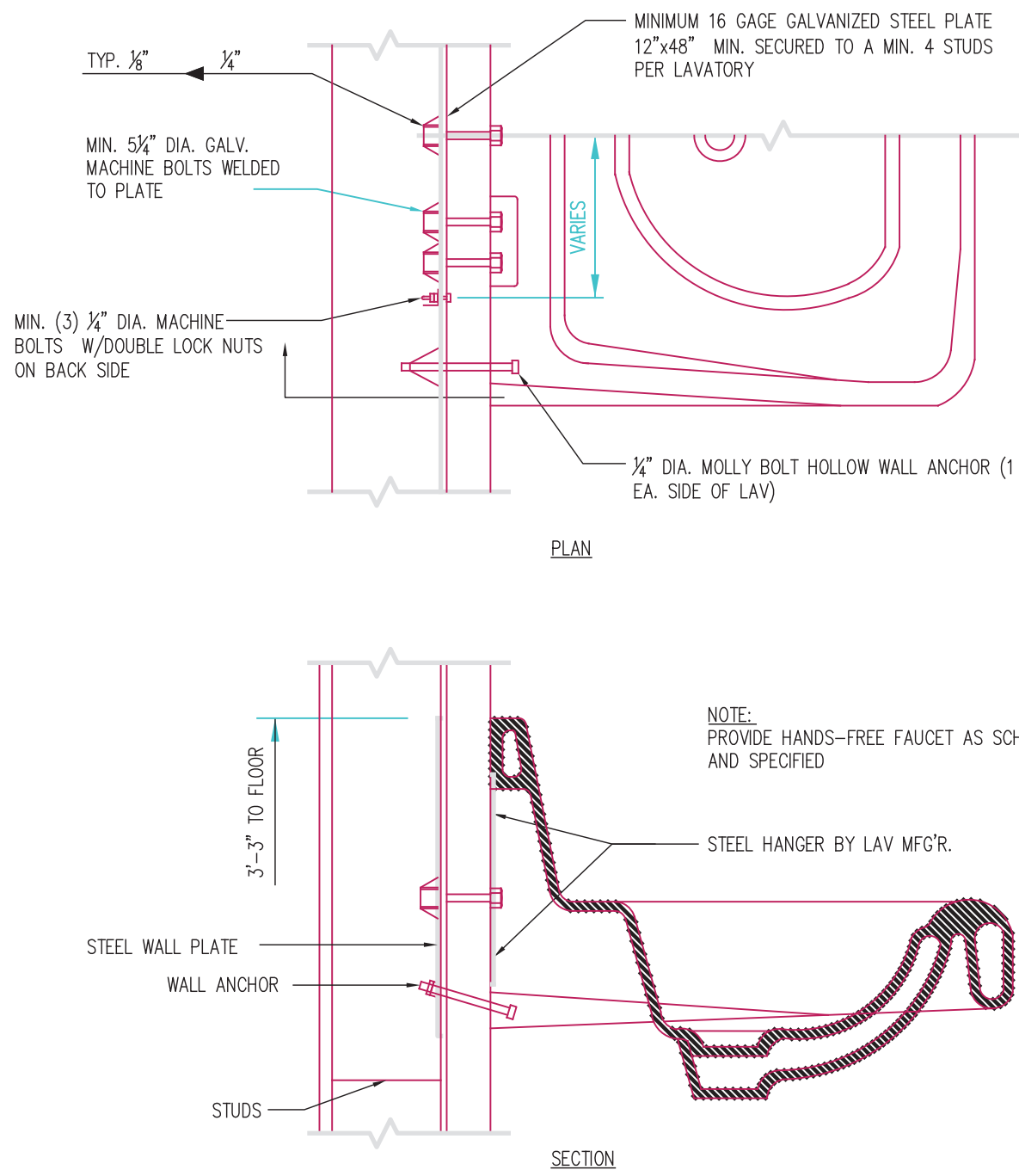



three inches = one foot
one and one half inches = one foot
one inch = one foot
one quarter inch = one foot
one eighth inch = one foot



PLUMBING FIXTURE SCHEDULE										
FIXTURE TYPE	FIXTURE SYMBOL	MANUFACTURE NAME AND MODEL NUMBER			CONNECTION SIZE				REMARKS	
		BASIC FIXTURE	SEAT	FAUCET / FLUSH VALVE	SOIL OR WASTE	VENT	C.W.	H.W.		
WATER CLOSET	P-103	AMERICAN STANDARD #WALL 2257.103	OLSONITE #95 OPEN FRONT LESS COVER	SLOAN G2 OPTIMA PLUS 8111, TOP SPUD, 1.6 GPF	4"	2"	1"	-	VITREOUS CHINA, LOW CONSUMPTION 1.6 GPF, ELONGATED BOWL, DIRECT-FED SIPHON JET ACTION, WALL MOUNTED.	
LAVATORY	P-418	AMERICAN STANDARD LUCERNE 0356.015 SINGLE CENTER HOLE	NOT APPLICABLE	SLOAN EBF-750-8-ADM OPTIMA SERIES WITH ETF-460-A GRID STRAINER	1-1/2"	1-1/4"	1/2"	1/2"	PROVIDE HANDS-FREE FAUCET AS INDICATED; SINK TO HAVE THREE HOLE PUNCH ONLY, PROVIDE MOGURE SUPPLIES, STOPS, 1-1/2" P-TRAP DRAIN TAILPIECE. INSTALL SLOAN EFT-529 OPTISHIELD LAVATORY PROTECTIVE ENCLOSURE	
COUNTER SINK	P-528	ELKAY LR2219	NOT APPLICABLE	CHICAGO FAUCETS 201-AGN2AE29-3170P	2"	2"	1/2"	1/2"	7 1/2" DEEP STAINLESS STEEL SINGLE COMPARTMENT SINK, FULLY UNDERCOATED, FURNISH FAUCET WITH GOOSENECK SPOUT, LAMINAR FLOW OUTLET, 4" WRIST BLADE HANDLES AND CRUMB CUP STRAINER.	



		CONSULTANTS:	ARCHITECT/ENGINEERS:	NORTH: <div></div>	APPROVED:	APPROVED:	Drawing Title	Project Title	Project Number		Engineering Service
									620-20-206		
									Building(s) Number		
									019		
									Drawing Number		
									PL 500		
									Dwg 56 of 61		
Bid Documents	08-17-2021										Department of Veterans Affairs
100% Working Drawing Submission	08-16-2021										
95% Working Drawing Submission	05-21-2021										
65% Working Drawing Submission	02-26-2021										
35% Working Drawing Submission	06-25-2018										
100% Preliminary Design	10-07-2017										
Revisions:	Date:										