

[illegible]



ADD ALTERNATE #1
REFER TO SPECIFICATION
SECTION 012300 FOR
ADDITIONAL INFORMATION

M2.01

1

2

3

4

5

6

7

8

9

10

11

PROPANE GAS FIRED MAKEUP AIR UNIT SCHEDULE

MARK No.	CFM	MIN. O.A.	SUPPLY HP	ESP IN.	HEATING MBH INPUT OUTPUT	EAT/LAT (°F)	ELECTRIC DATA VOLTS/PH/Hz	MCA	MOP	A.F.U.E. %	LP GAS PRESS. MAX/MIN W.C.	UNIT WEIGHT (LBS)	MODEL & MANUFACTURER	REMARKS
MAU-1	2,280	2,280	1.5	0.75	250 200	7 / 87.5	208/3/60	9.6	15	81	14"/10"	890	IGX-109-H124 GREENHECK	INDIRECT GAS FURNACE, SUSPENDED W/ SPRING VIBRATION ISOLATORS, S.S. HEAT EXCHANGER, SMOKE DETECTOR, FILTER RACK, 13:1 TURNDOWN MODULATION, PRESSURE REGULATOR, VALVES, NEMA 3R DISCONNECT SWITCH, THERMOSTAT, THERMOSTAT W/ LOCKING COVER. INTERLOCK UNIT W/ EF-1

ELECTRIC RESISTANCE CABINET/UNIT HEATER SCHEDULE

(TRANE AS STANDARD)

TAG No.	LOCATION	SA (CFM)	HEATING KW	HEATING MBH	ELECTRIC DATA VOLT/PH/Hz	MODEL & MANUFACTURER	WEIGHT (LBS)	DIMENSIONS (W x H x D) (IN.)	REMARKS
ECH-1	VESTIBULE/ENTRANCE	175	2.0	6.8	208/1/60	UHAA-021ATAD TRANE	27	14 x 19 x 4	WALL-RECESSED CABINET HEATER. SEE NOTES.

NOTES:
1. PROVIDE HEAVY-DUTY LOUVERED GRILLE, BUILT-IN TAMPER RESISTANT THERMOSTAT & DISCONNECT SWITCH & FAN DELAY SWITCH FOR ECH-1.
2. PROVIDE W/ DOUBLE POLE LINE BREAK THERMOSTAT WITH OFF OPTION.
3. ECH-1 UNIT COLOR TO BE SELECTED BY OWNER.
4. PROVIDE DDC CONTROLS & CONNECT TO NEW BMS.

EXHAUST FAN SCHEDULE

(GREENHECK AS STANDARD)

TAG No.	SYSTEM SERVED	LOCATION	CFM	STATIC PRESSURE LOSS (IN)	BHP	MHP	RPM	ELECTRIC DATA VOLT/PH/Hz	DIMENSIONS (DIA. x H) (IN)	APPROX. UNIT WEIGHT (LBS)	MODEL & MANUFACTURER	INLET SONES	REMARKS
EF-1	MAINT. SHOP	WALL	2,280	0.52	0.54	3/4	1200	208/1/60	30 X 30	200	SBE-1H20-7 GREENHECK	21	NOTES 1,2,3,4 & 9.
EF-2	BATH./JAN./STORAGE	PLENUM	180	0.2	0.03	1/30	1550	120/1/60	12Wx13Lx12H	30	SQ-70-VG GREENHECK	1.9	NOTES 4,5,6,7,& 8.

NOTES:
1. PROVIDE SHORT WALL HOUSING W/ OSHA PROTECTIVE GUARD
2. PROVIDE 90 DEGREE WEATHER HOOD W/ 0.5 WELDED WIRE BIRDSCREEN.
3. FAN SHALL INTERLOCK WITH MAU-1.
4. PROVIDE SWITCH NEMA1, TOGGLE, & JUNCTION BOX.
5. PROVIDE FAN WITH BACK-DRAFT DAMPER.
6. PROVIDE HANGING ISOLATORS
7. PROVIDE SPEED CONTROLLER (PSC).
8. FAN TO RUN CONTINUOUSLY AND CONTROLLED BY A SWITCH LOCATED IN JANITOR'S CLOSET.
9. THIS FAN IS INCLUDED IN THE BASE BID.

VENTILATION SCHEDULE

Room Name	Floor Area (Sq. Ft.)	Required O.A. per Sq. Ft.	Required O.A. For Space	No. of People	Required O.A. per Person	Required OA For Occupants	Total Min. O.A. Required (CFM)	Zone Air Distribution Effectiveness	Zone Min. O.A. Required (CFM)	Design		Remarks
										O.A. (CFM)	E.A. (CFM)	
MAINTENANCE SHOP	3,020	-	-	-	-	-	-	-	-	2,280	2,280	0.75/SF
BREAK ROOM	357	0.06	21	8	5	40	60	0.8	77	80		
BATHROOM	95	-	-	-	-	-	-	-	-	100		50CFM/FIXT.
JANITOR'S CLOSET	45	-	-	-	-	-	-	-	-	-	50	
PAPER STORAGE	395	0.06	24	-	-	-	24	0.8	30	30	30	
TOTAL	3,913		45	8		40	85			2,390	2,460	

ELECTRIC BASEBOARD SCHEDULE

MARK No.	WATTS	LENGTH	ELECTRIC DATA VOLT - PH - Hz	MODEL & MANUFACTURER	REMARKS
BB-1	2500	8'-0"	208-1-60	QMKC25408W QMARK	FLOOR MOUNTED W/ FRONT & BACK ENCLOSURE PANELS & WALL MOUNTED THERMOSTAT.
BB-2	1000	4'-0"	120-1-60	QMKC2514W QMARK	FLOOR MOUNTED W/ FRONT & BACK ENCLOSURE PANELS & WALL MOUNTED THERMOSTAT.

NOTE: BB-1 AND BB2 ARE TO BE INCLUDED IN ADD ALTERNATE #1. SEE SPECIFICATION SECTION 012300 FOR ADDITIONAL INFORMATION.

DUCTLESS SPLIT INDOOR AC/HEAT PUMP UNIT SCHEDULE

(DAIKIN AS STANDARD)

TAG No.	AREA SERVED	AIR FLOW (CFM)	COOLING		HEATING	MODEL & MANUFACTURER	ELECTRIC DATA			REFRIGERANT TYPE	APPROX DIMENSION L x W x H (IN)	APPROX WEIGHT (LBS)	REMARKS
			TBMH	SBMH	MBH		VOLT/PH/Hz	MCA	MOP				
AC-1	BREAK ROOM	1,180	34	29.6	41.5	FTFQ36PVJU DAIKIN	208/1/60	1.4	15	R-410A	33 X 33 X 11	66	CLG.-RECESSED HEAT PUMP UNIT. SEE NOTES.
AC-2	PAPER STORAGE	280	8.9	8	11.1	FXAQ09PVJU DAIKIN	208/1/60	0.3	15	R-410A	31 X 9 X 11	27	WALL MOUNTED HEAT PUMP UNIT. SEE NOTES.

NOTES:
1. PROVIDE W/ WALL-MOUNTING PLATE. REMOTE CONTROLLER FOR EACH UNIT.
2. PROVIDE CONDENSATE PUMP. PUMP TO BE POWERED BY AC UNIT.
3. PROVIDE AC-1 & AC-2 W/ FAN FRESH AIR KIT. FAN TO BE POWERED BY AC UNIT.
4. PROVIDE PROPER REFRIGERANT CHARGING FOR ALL UNITS.
5. AC-1 & AC-2 ARE INCLUDED IN ADD ALTERNATE #1 - REFER TO SPECIFICATION SECTION 012300.

OUTDOOR AIR-COOLED CONDENSING UNIT SCHEDULE

(DAIKIN AS STANDARD)

TAG No.	LOCATION	UNIT SERVED	COOLING OPERATING TEMP (°F)	HEATING OPERATING TEMP (°F)	NOMINAL COOLING (MBH)	NOMINAL HEATING (MBH)	MODEL & MANUFACTURER	ELECTRICAL VOLT/PH/Hz	COMPRESSOR NO.	COND FAN NO.	MCA	MOP	REFRIGERANT TYPE	APPROX DIMENSIONS W x D x H (IN)	APPROX. WEIGHT (LBS)	SEER	REMARKS
ACCU-1	GROUND	AC-1&2	14 TO 115	5 TO 60	40.3	37.5	RXTQ36TAVJ9 DAIKIN	208/1/60	1	1	16.5	25	R-410A	37 x 12 x 40	175	18	SEE NOTES

NOTES:
1. ELECTRICAL SUBCONTRACTOR SHALL FURNISH & INSTALL NEMA 3R DISCONNECT SWITCH & GFI CONVENIENCE OUTLET FOR EACH UNIT. REFER TO ELECTRICAL DRAWINGS.
2. PROVIDE W/ LOW AMBIENT CONTROL FOR ACCU-1
3. PROVIDE UNIT W/ WIND BAFFLE.
4. ACCU-1 IS INCLUDED IN ADD ALTERNATE #1. REFER TO SPECIFICATION SECTION 012300 FOR ADDITIONAL INFORMATION.

SED PROJECT #66-08-01-06-3-012-001

MECHANICAL SCHEDULES

NEW MAINTENANCE BUILDING
MOUNT PLEASANT CENTRAL SCHOOL DISTRICT
825 WESTLAKE DRIVE
THORNWOOD, NY 10594

Job No. 4.1449.02

File No. 4144902M001

M6.01

7/8/21

MAM

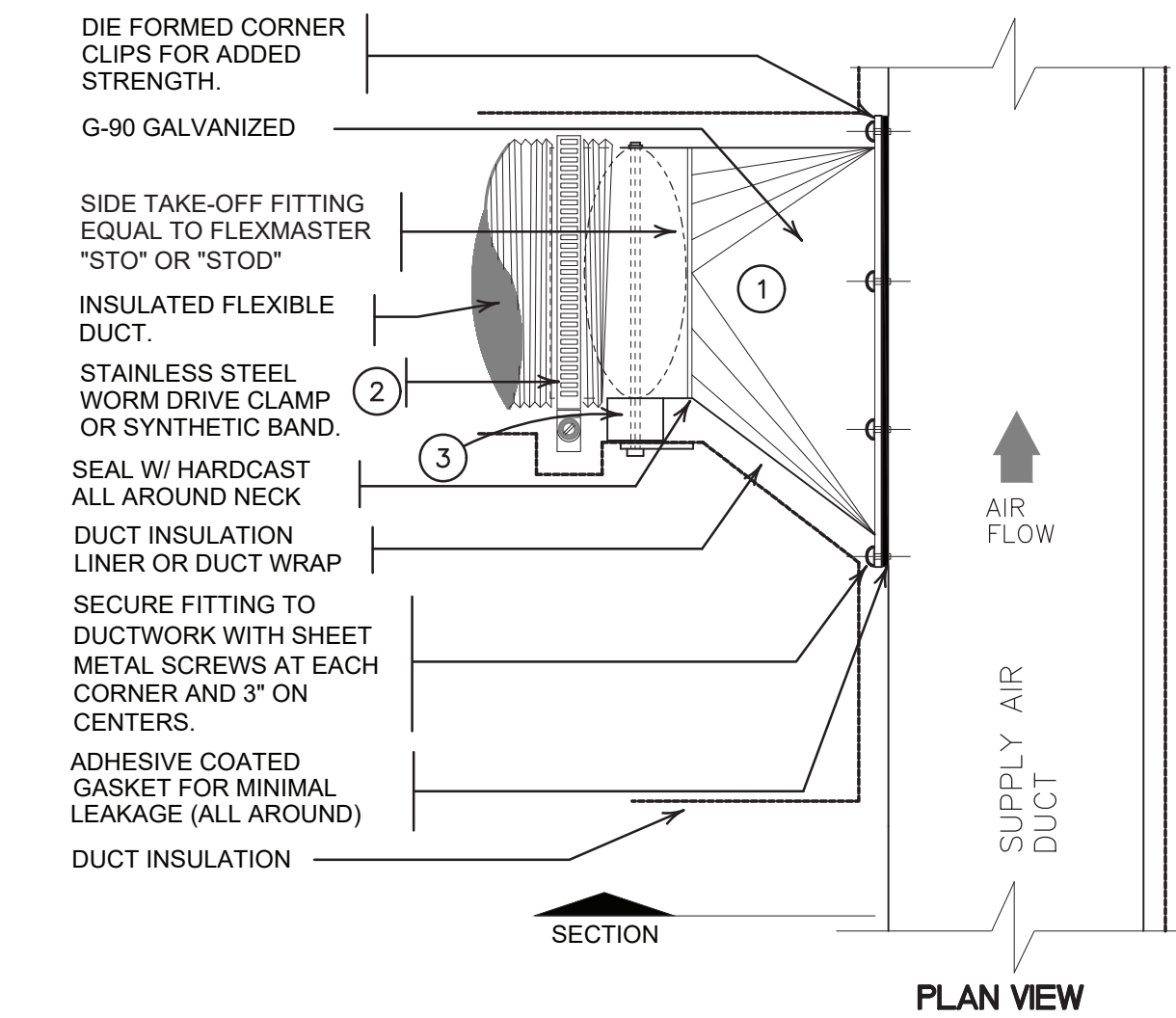
MAM

MICHAEL J. MCGOVERN, R.A.
REGISTERED ARCHITECT
License No. 022257-1

Revisions:

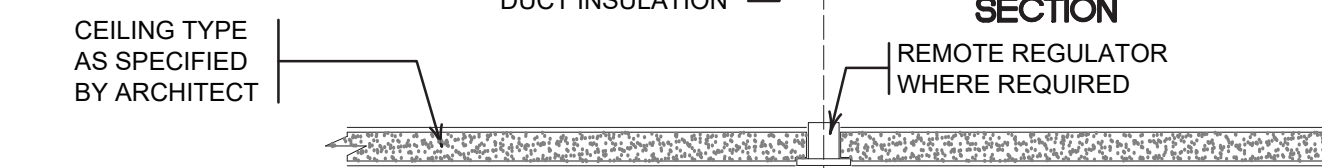
UNAUTHORIZED ALTERATIONS OR ADDITIONS TO THIS DOCUMENT IS A VIOLATION OF SECTION 2209 OF THE NEW YORK STATE EDUCATION LAW. THESE DOCUMENTS REMAIN THE EXCLUSIVE PROPERTY OF THE ENGINEER, AND MAY NOT BE USED FOR ANY PURPOSE WHATSOEVER WITHOUT THE WRITTEN CONSENT OF THE ENGINEER.

J J & J
LAN ASSOCIATES
engineering • planning • architecture • surveying
252 MAIN STREET, GOSHEN, NEW YORK 10924 (845)815-0350



GENERAL NOTE:

1. WHERE REGULATORS ARE REQUIRED IN NON-ACCESSIBLE LOCATIONS, PROVIDE ACCESS DOORS OR YOUNG OR EQUAL EXTENSION RODS, COUPLINGS, 90° GEAR DRIVES, ETC., AS REQUIRED, & YOUNG 301 OR APPROVED EQUAL FLUSH MOUNTED REMOTE REGULATOR AS DIRECTED BY ARCHITECT.

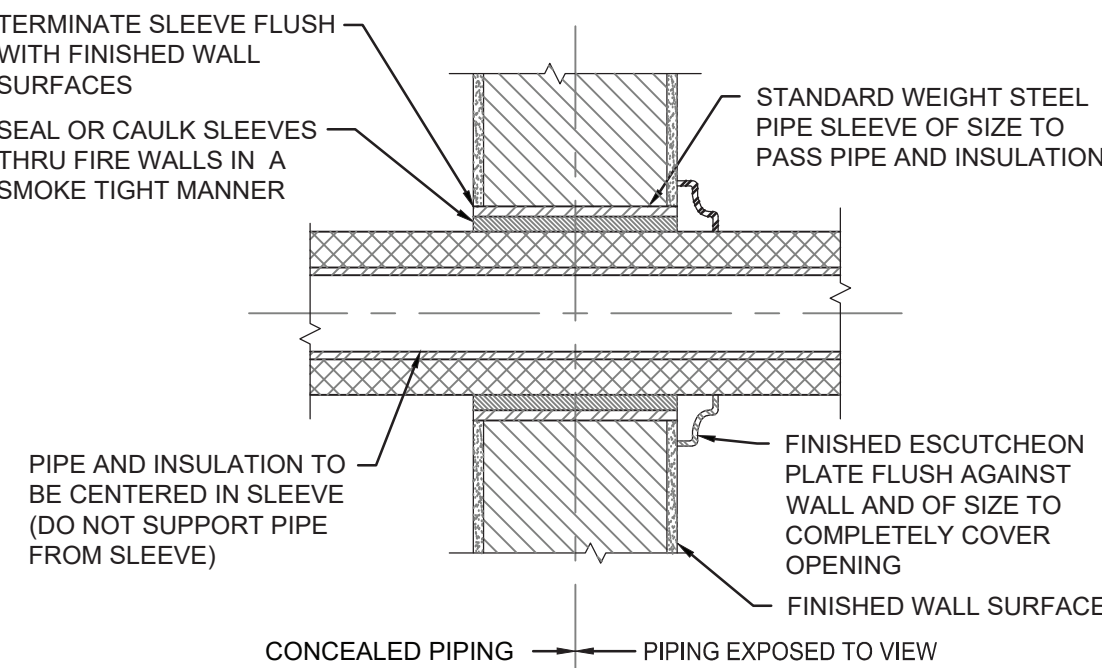


NOTES:

1. PROVIDE SQUARE TO ROUND TAP WHERE FLEXIBLE DUCT SIZE EXCEED DIMENSION OF RECTANGULAR DUCT.
2. EXTEND INSULATION AND OUTER JACKET OVER THE SECURE CLAMP/BAND AND TAPE DOWN TO SLEEVE/COLLAR TO MAINTAIN VAPOR BARRIER INTEGRITY. (TYPICAL)
3. PROVIDE DAMPER IF TAP SERVES AN AIR DISTRIBUTION DEVICE.
4. RIGID ROUND DAMPERS SHALL BE "FLEXMASTER" SLBO RAISED PLATFORM.

1 ROUND TAP DETAIL

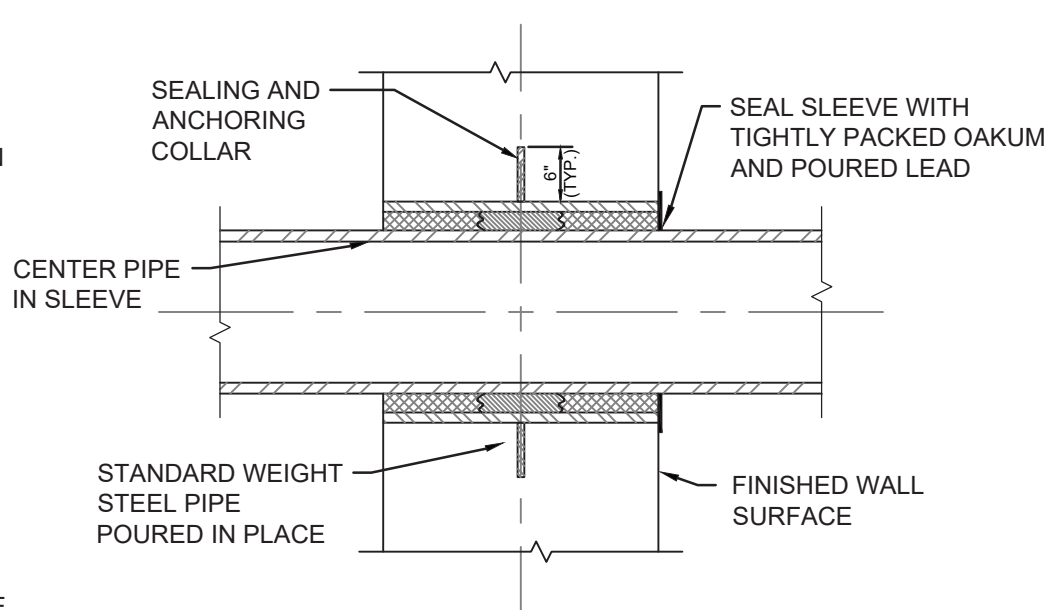
NOT TO SCALE



INTERIOR WALLS

5 PIPE SLEEVES THRU WALL DETAILS

NOT TO SCALE



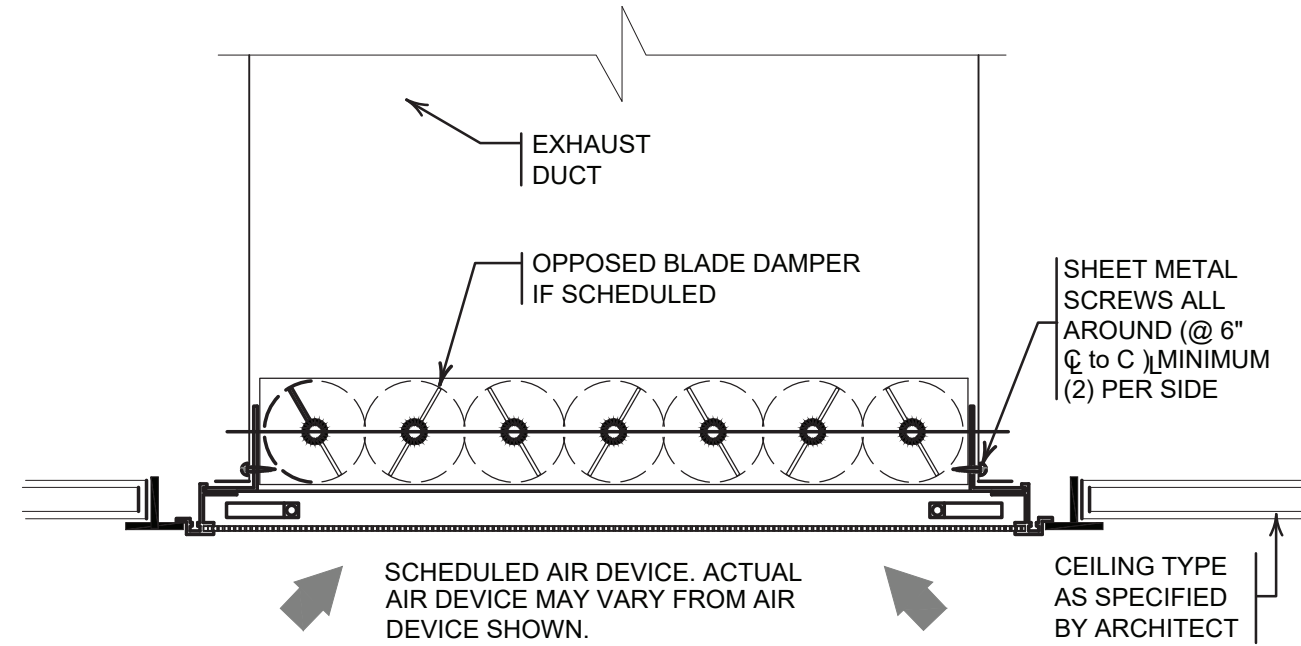
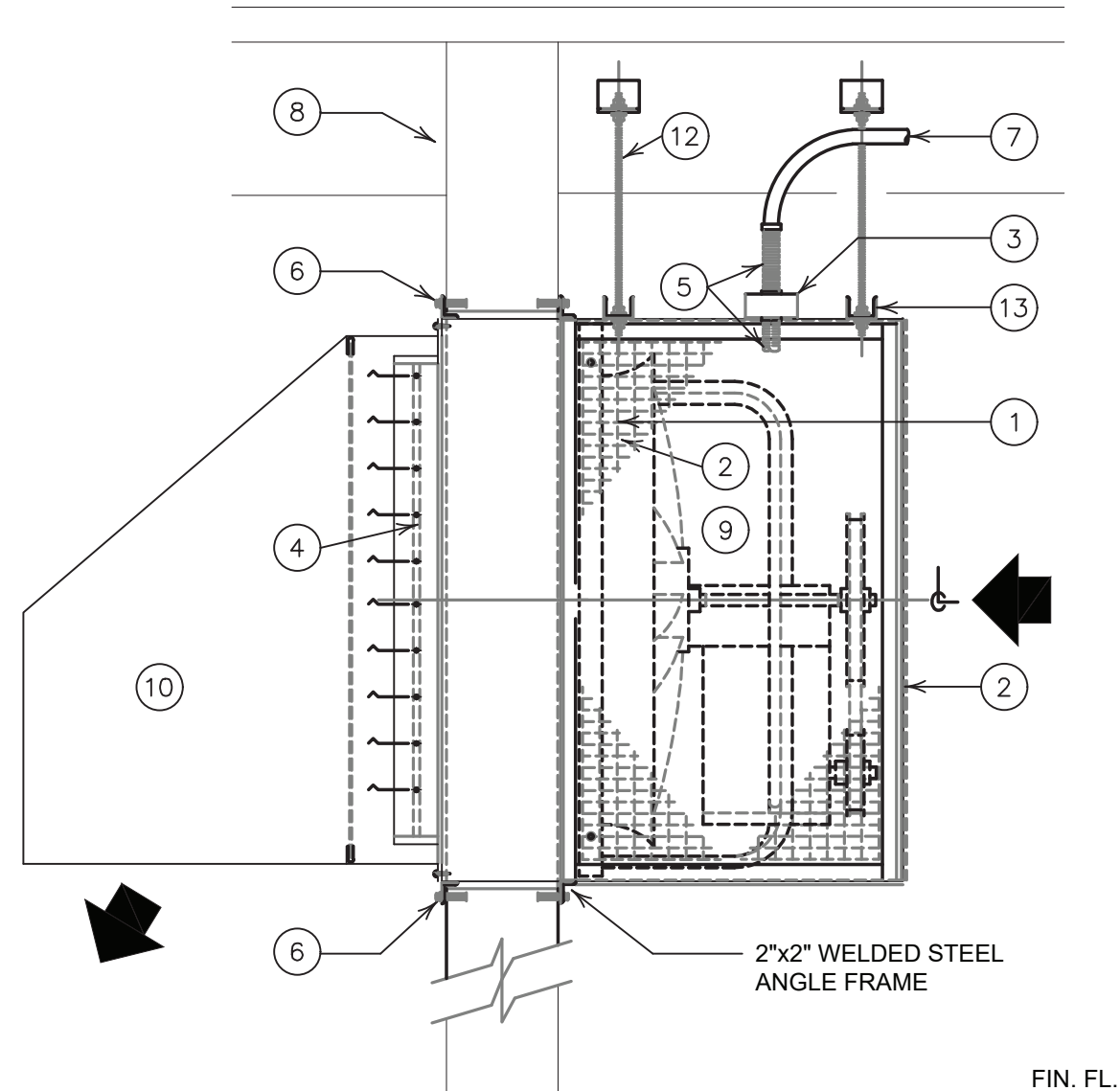
EXTERIOR WALLS

NOTES:

- 1 FAN - AIR FLOW DIRECTION AND CONFIGURATION SHALL BE AS SPECIFIED.
- 2 SHORT WALL HOUSING W/ OSHA PROTECTIVE GUARD
- 3 JUNCTION BOX - W/ RUBBER GROMMET AT PLENUM PENETRATION).
- 4 BAROMETRIC BACK DRAFT
- 5 FLEXIBLE CONDUIT
- 6 LAG SCREWS @ 6" C TO C.
- 7 1/2" SCHEDULE 40 PVC CONDUIT
- 8 STRUCTURE - REFER TO ARCHITECTURAL DRAWINGS.
- 9 REMOVABLE ACCESS PANEL - LOCATED ON MOTOR SIDE.
- 10 90° WEATHERHOOD
- 12 1/2"Ø ALL THREADED RODS ATTACHED TO BUILDING STRUCTURE IN AN APPROVED MANNER.
- 13 3"x2" CHANNEL SUPPORT ATTACHED TO WIRE GUARD FRAME. (FOR FAN WITH MOTORS IN EXCESS OF 70 lbs.)

2 WALL MOUNTED PROPELLER FAN INSTALLATION DETAIL

N.T.S.

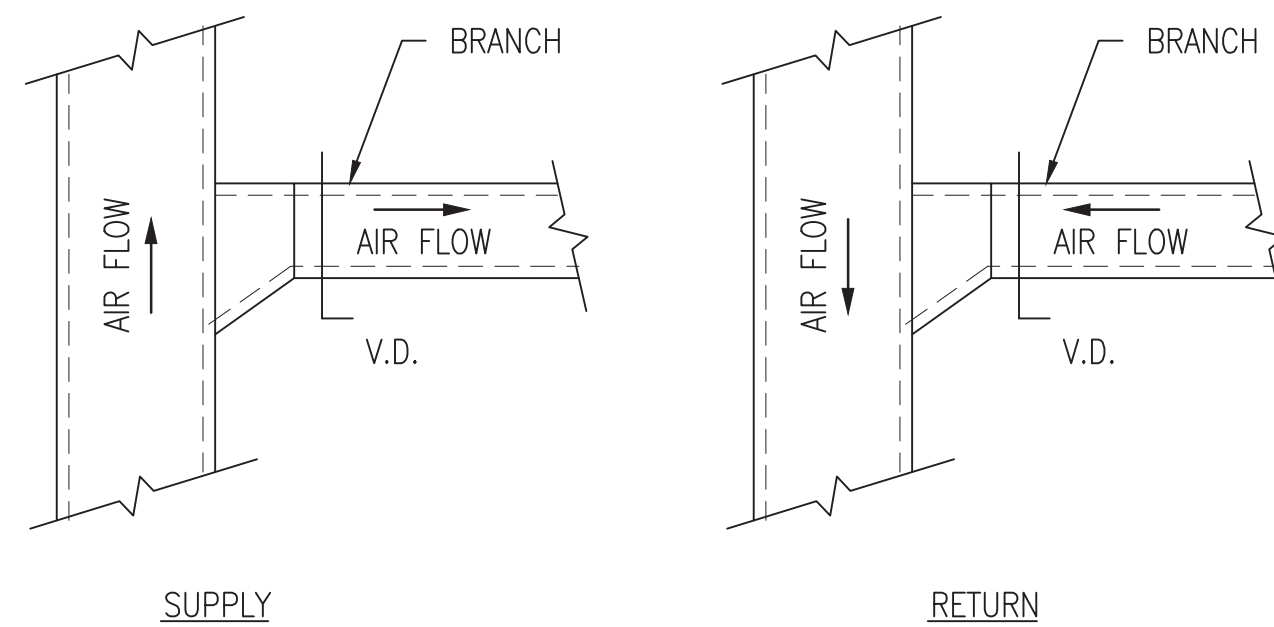


NOTES:

1. RETURN/EXHAUST AIR GRILLE SHALL BE INSTALLED SUCH THAT THE FACE OF THE GRILLE IS FLUSH WITH CEILING.
2. REFER TO DIFFUSER SCHEDULE FOR ADDITIONAL INFORMATION.
3. REFER TO ARCHITECTURAL DRAWING FOR CEILING TYPE AND CONSTRUCTION DETAILS.

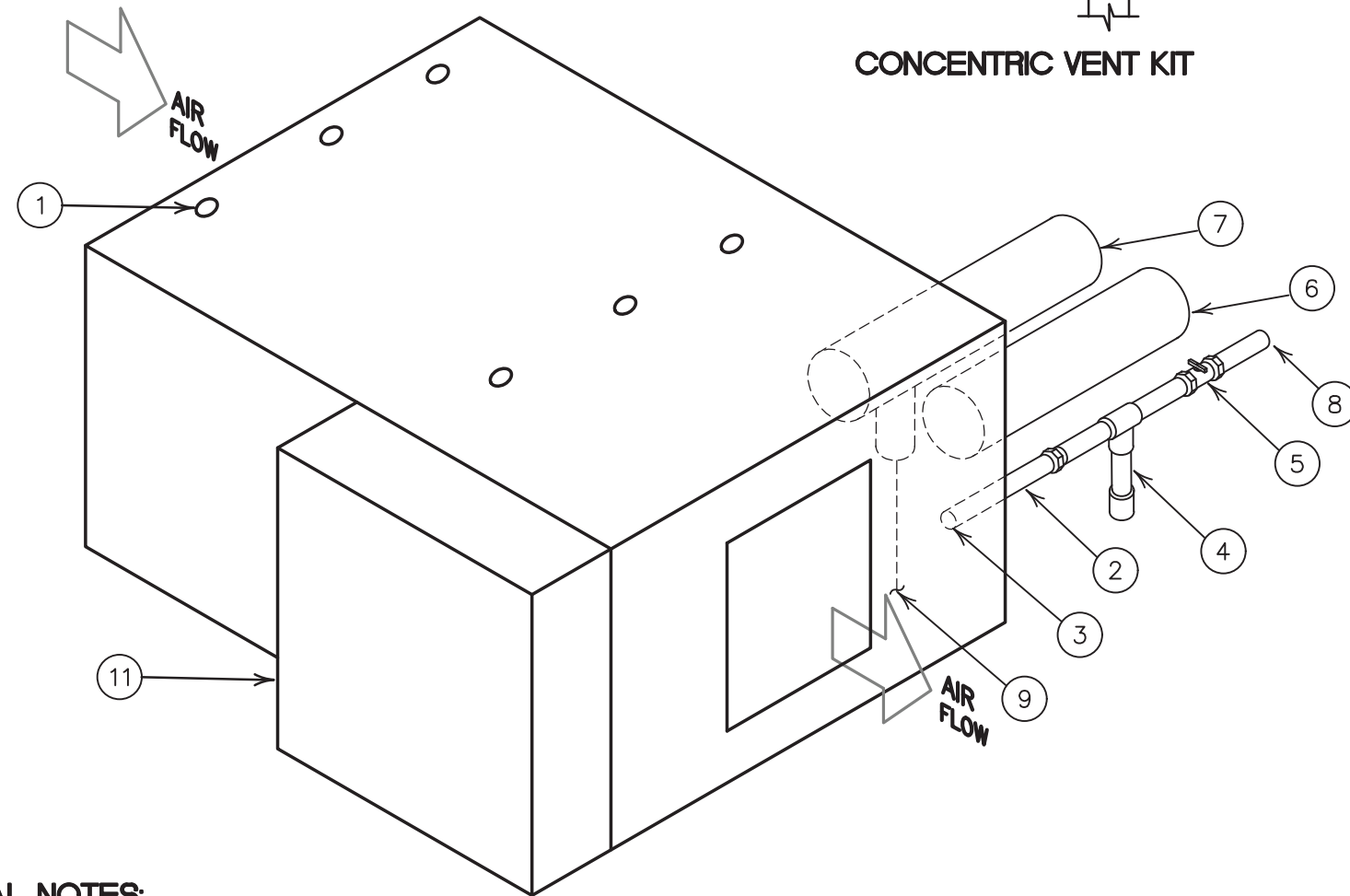
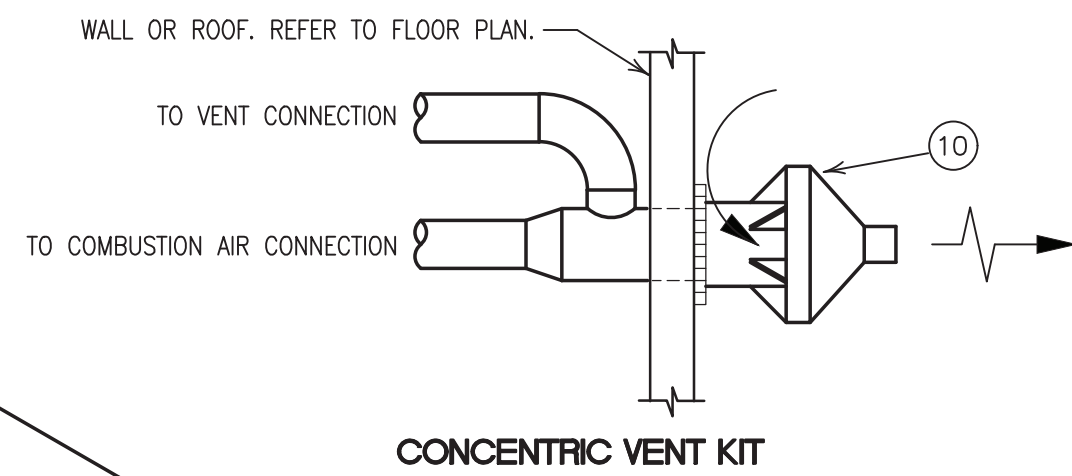
3 DUCTED EXHAUST AIR GRILLE DETAIL

NOT TO SCALE



4 DUCT / DIFFUSER TAKE OFF DETAIL

NOT TO SCALE



GENERAL NOTES:

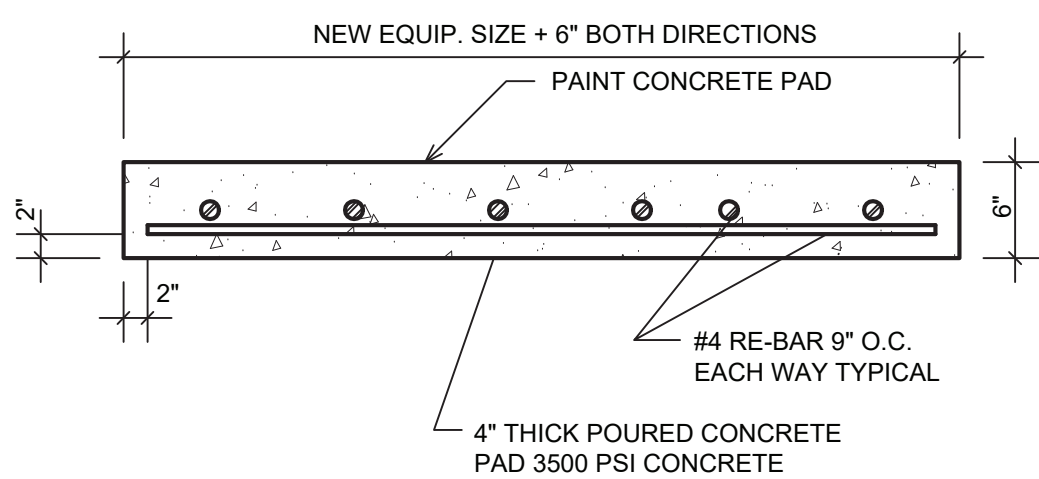
1. CONSULT LOCAL CODE AUTHORITIES FOR SPECIFIC REQUIREMENTS.

KEYED NOTES:

- 1 3/8"- 16 FEMALE THREAD ALL SUSPENSION POINTS.
- 2 PIPE NIPPLE EXTENDING OUTSIDE THE CABINET.
- 3 TO GAS VALVE (INSIDE CABINET).
- 4 12" DRIP LEG.
- 5 MANUAL SHUTOFF VALVE.
- 6 6" GALVANIZED DUCT COMBUSTION AIR CONNECTION.
- 7 6" SCHE. 40 PVC VENT CONNECTION.
- 8 FROM GAS SUPPLY (PROPANE GAS)
- 9 CONDENSATE DRAIN TEE, INSTALL 1/2" DRAIN TRAP, PIPE TO FLOOR DRAIN OR OTHER INDIRECT SAN. CONNECTION
- 10 VENT/COMBUSTION AIR KIT WERE SPECIFIED.
- 11 CONTROL PANEL.

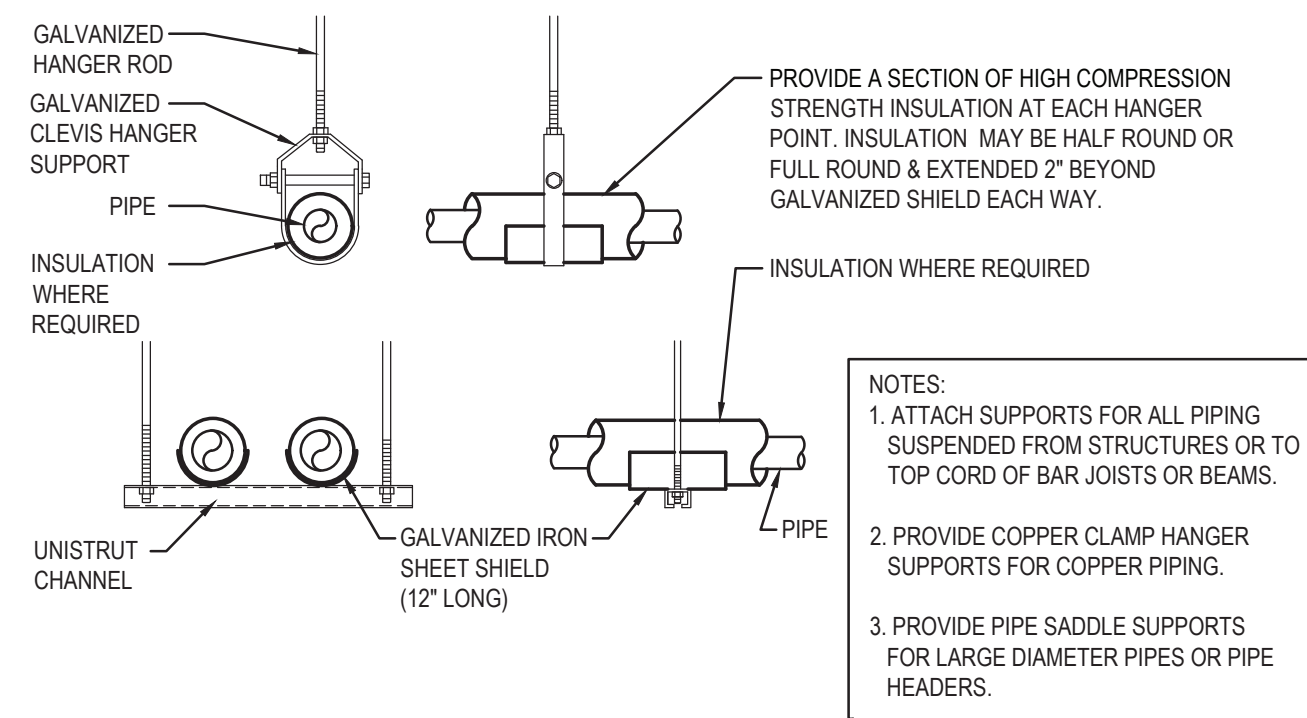
8 MAU INSTALLATION DETAIL

NOT TO SCALE - SCHEMATIC ONLY



7 CONCRETE PAD DETAIL

NOT TO SCALE - SCHEMATIC ONLY



6 PIPE SUPPORT HANGERS

NOT TO SCALE

Revisions:

UNAUTHORIZED ALTERATIONS OR ADDITIONS TO THIS DOCUMENT IS A VIOLATION OF SECTION 2209 OF THE NEW YORK STATE EDUCATION LAW. THESE DOCUMENTS REMAIN THE EXCLUSIVE PROPERTY OF THE ENGINEER, AND MAY NOT BE USED FOR ANY PURPOSE WHATSOEVER WITHOUT THE WRITTEN CONSENT OF THE ENGINEER.



Date	7/8/21
Checked	MAM
Drawn	MAM

Revisions:

LAN ASSOCIATES
engineering • planning • architecture • surveying
 252 MAIN STREET, GOSHEN, NEW YORK 10924. (845) 615-0250

Job No. 4.1449.02

File No. 4144902M001

M6.03