

A0.0

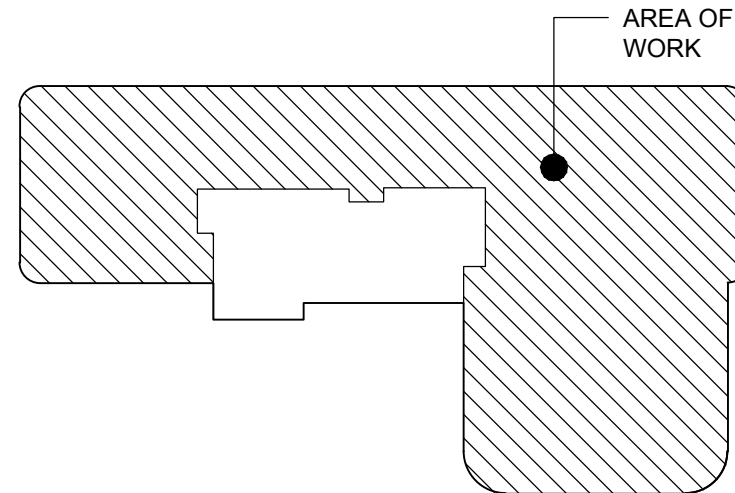
Montefiore

MONTEFIORE
NYACK HOSPITAL

160 NORTH MIDLAND AVENUE
NYACK, NY 10960

HIGHLAND MEDICAL
OBYGN CLINICS
THIRD FLOOR
17 SQUADRON BLVD
NEW CITY, NY 10956

KEY PLAN: NOT TO SCALE



ARCHITECT

pds
Pomario Design Studio Architecture, PLLC
19 Front Street
Newburgh, NY 12550
33 Irving Place, 3rd Floor
New York, NY 10004
Telephone: 845.561.0448
Facsimile: 845.561.0446
pds@HealthCareDesign.com
www.healthcaredesign.com
New York License No.: 019680

MEP ENGINEER

ME ENGINEERING

Mechanical/Electrical Engineering Consultants

Schenectady | Rochester | Buffalo | Syracuse
435 STATE STREET, SUITE 410
SCHENECTADY, NY 12305
518.533.2171
www.meengineering.com

STRUCTURAL ENGINEER

ISSUED DOCUMENTS:

No.	Date	Description
1	2/11/22	BID ISSUE - ARCH
1	3/16/22	ADDENDA #03

SEAL

IT IS A VIOLATION OF THE LAW FOR ANY PERSON, UNLESS ACTING UNDER THE DIRECTION OF A LICENSED ARCHITECT, TO ALTER THIS DOCUMENT IN ANY WAY. IF ALTERED, THE ALTERING ARCHITECT SHALL AFFIX HIS SEAL AND THE NOTATION "ALTERED BY" FOLLOWED BY HIS SIGNATURE AND THE DATE OF SUCH ALTERATION, AND A SPECIFIC DESCRIPTION OF THE ALTERATION.

DRAWING TITLE:
**PROPOSED FLOOR
PLAN - THIRD FLOOR**

PROJECT NUMBER 21035a	CON # -
DATE 02/06/2022	SCALE AS NOTED
DRAWING NUMBER	

A4.1

FLOOR PLAN KEY NOTES:

- 1 AREA NOT IN WORK SCOPE.
- 2 WALL TO CENTER ON MULLION.
- 3 REMOVE EXISTING GYPSUM WALL BOARD AND SPLICE NEW PARTITION TO EXISTING.
- 4 TOP OF EXISTING PARTITION.
- 5 EXISTING PARTITION TO REMAIN.
- 6 COORDINATE WATER CLOSET PLACEMENT WITH BEAM BELOW.
- 7 NEW COLUMN ENCLOSURES. CONTRACTOR TO FRAME NEW PARTITION(S) TIGHT TO EXISTING COLUMN(S).
- 8 PATCH & REPAIR EXISTING FINISHES WITH LIKE KIND.
- 9 EXISTING PUSH TO EXIT AND CARD READER TO REMAIN.

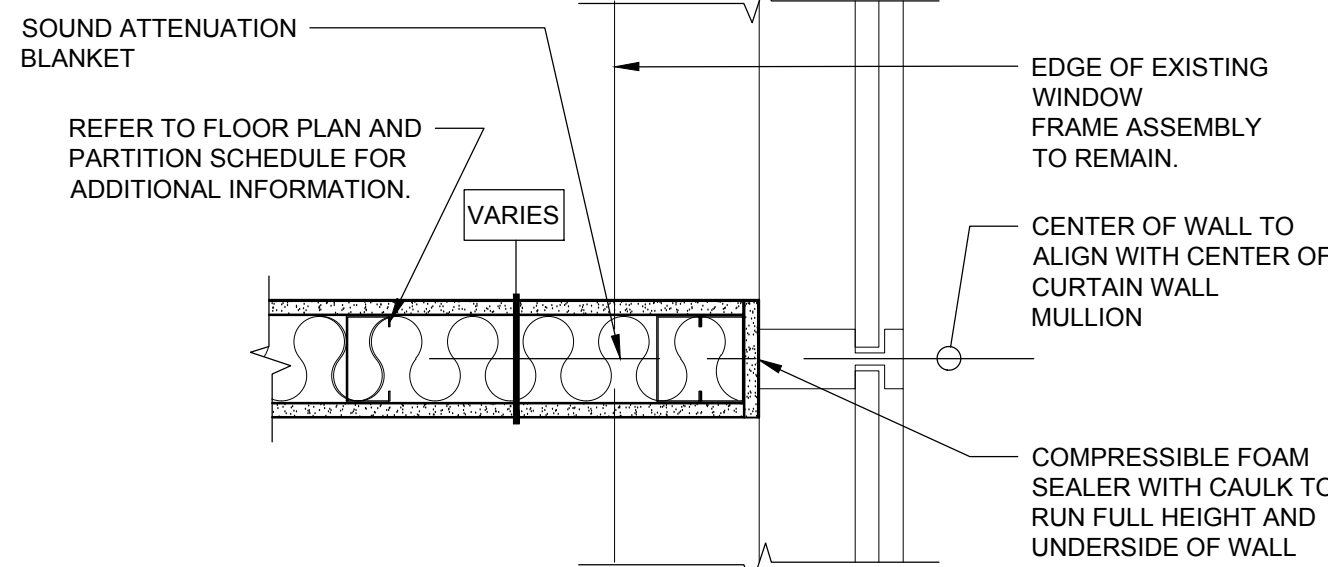
EXISTING ACCESS CONTROLS TO BE REMOVED AND REPLACED WITH NEW WAVE TO OPEN.

1
ADD. #03

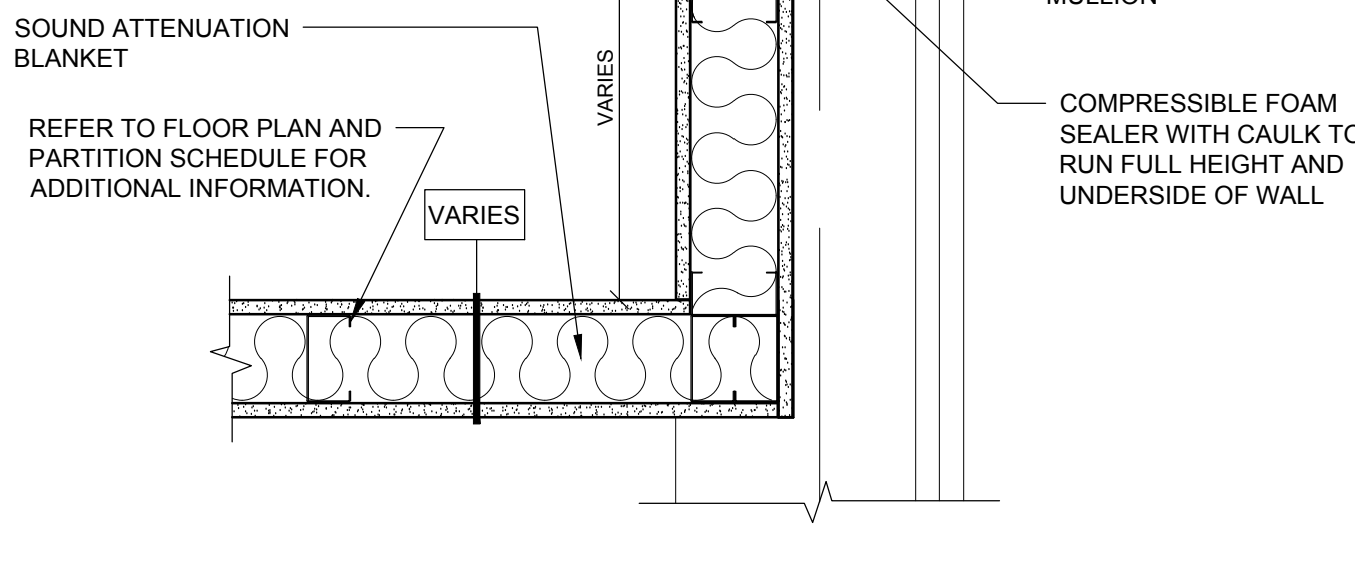
GENERAL NOTES:

1. ALL PARTITIONS ARE NEW, UNLESS OTHERWISE NOTED.
2. SEE EQUIP. PLAN FOR MILLWORK ELEV. REFERENCES.
3. EXISTING FINISHES TO REMAIN IN ALL OUT OF SCOPE AREAS. PATCH & REPAIR WITH LIKE KIND AS MAY BE REQUIRED FOR NEW WORK. NOTED THAT OUT OF SCOPE WORK WILL OCCUR ON FLOORS BELOW.

1
ADD. #03

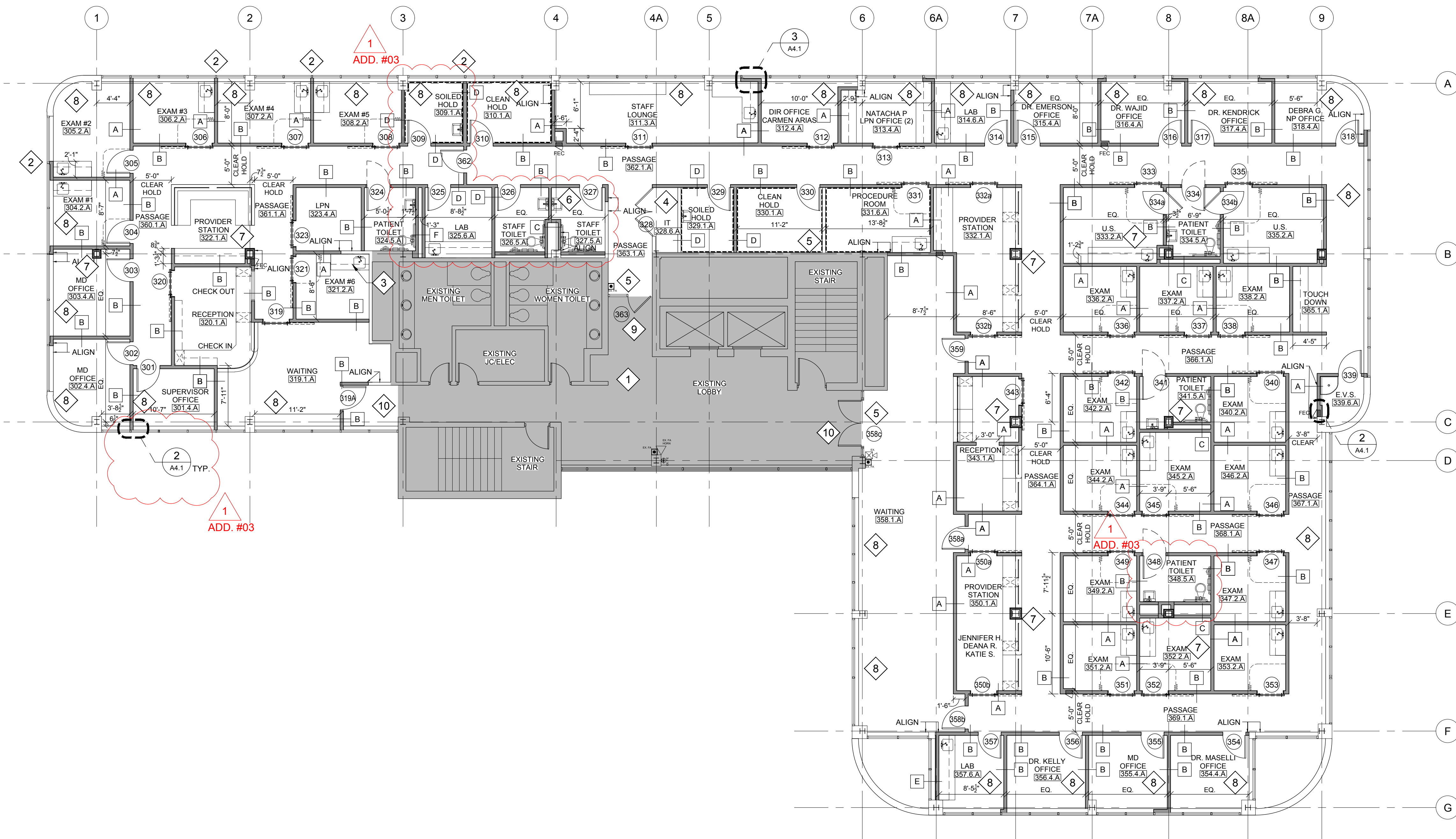


2 PARTITION TERMINATION
A4.1 N.T.S.



3 OFFSET PARTITION TERMINATION
A4.1 N.T.S.

1
ADD. #03












1 PROPOSED FLOOR PLAN - THIRD FLOOR
A4.1 1/8" = 1'-0"

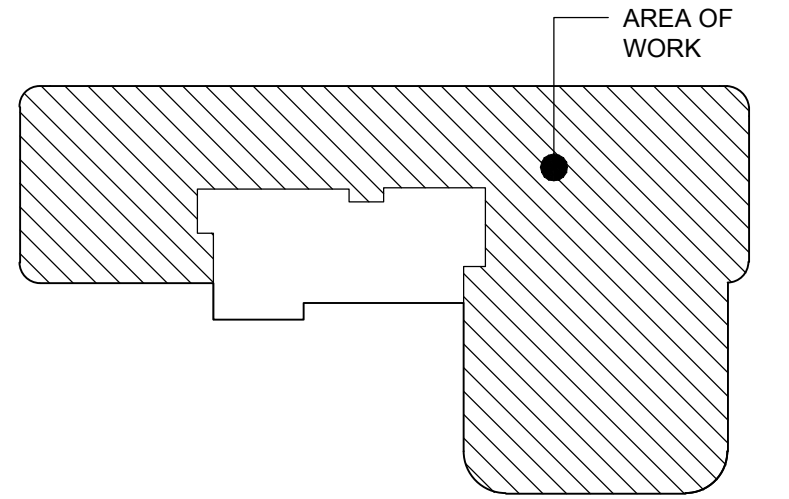
0 4' 8' 16'
Scale: 1/8" = 1'-0" AREA NOT IN SCOPE U.N.O.

- 1 AREA NOT IN WORK SCOPE.
- 2 UNDERCABINET TASK LIGHT WITH MOTION DETECTION SWITCH.
- 3 NEW CEILING TILE TO MATCH EXISTING.
- 4 DROPPED GYPSUM BOARD SOFFIT. REFER TO DETAILS ON A5.2 FOR FURTHER INFORMATION.
- 5 DROPPED GYPSUM BOARD LIGHT COVE SOFFIT SET AT 7'-5" A.F.F. REFER TO DETAILS ON A5.2 FOR FURTHER INFORMATION.
- 6 CURTAIN TRACK TYP. AT EXAM ROOMS & PROCEDURE ROOMS. REFER TO DETAILS ON A5.2 SHEET FOR FURTHER INFORMATION.

1. ALL WALL CABINETS TO HAVE SLOPED P.LAM. TOPS.
2. ELECTRICAL CONTRACTOR TO FIELD VERIFY VOLTAGES BEFORE SUBMITTING SHOP DRAWINGS FOR ANY FIXTURE.
3. ALL ACOUSTICAL CEILING TILES TO BE CENTERED EQUALLY IN ROOM, UNLESS OTHERWISE NOTED.
4. SEE FINISH SCHEDULE FOR FINISH TYPES.
5. ALL DIMENSIONS ARE TO CENTERLINE OF LIGHT FIXTURE UNLESS OTHERWISE NOTED.
6. REFER TO SHEET A5.2 FOR TYPICAL CEILING DETAILS.
7. REFER TO MEP DRAWINGS FOR ADDITIONAL INFORMATION
8. REFER TO ARCHITECTURAL DRAWINGS, INCLUDING INTERIOR ELEVATIONS AND EQUIPMENT PLANS FOR ADDITIONAL INFORMATION REGARDING LAYOUT AND EXTENT OF WORK REQUIRED.
9. ALL CEILINGS TO BE 8'-0" A.F.F. UNLESS NOTED OTHERWISE.
10. CONTRACTOR TO RELOCATE EXISTING 2X4 LIGHT FIXTURES AS REQUIRED BY NEW WORK.
11. CONTRACTOR TO RELOCATE EXISTING DIFFUSERS/GRILLES AS REQUIRED BY NEW WORK. REFER TO M.E.P. DRAWINGS FOR MORE INFORMATION.

SYMBOL		SPECIFICATION	
	A		B
	C		D
	E		F
	G		H
	I		J
	K		L
	M		N
	O		P
	Q		R
	S		T
	U		V
	W		X
	Y		Z
	AA		AB
	AC		AD
	AE		AF
	AG		AH
	AI		AJ
	AK		AL
	AM		AN
	AO		AP
	AQ		AR
	AS		AT
	AU		AV
	AW		AX
	AY		AZ
	BA		BB
	BC		BD
	BE		BF
	BG		BH
	BI		BJ
	BK		BL
	BM		BN
	BO		BP
	BQ		BR
	BU		BV
	BW		BX
	BY		BZ
	CA		CB
	CC		CD
	CE		CF
	CG		CH
	CI		CJ
	CK		CL
	CM		CN
	CO		CP
	CQ		CR
	CU		CV
	CW		CX
	CY		CZ
	DA		DB
	DC		DD
	DE		DF
	DG		DH
	DI		DJ
	DK		DL
	DM		DN
	DO		DP
	DQ		DR
	DU		DV
	DW		DX
	DY		DZ
	EA		EB
	EC		ED
	EE		EF
	EG		EH
	EI		EJ
	EK		EL
	EM		EN
	EO		EP
	EQ		ER
	EU		EV
	EW		EX
	EY		EZ
	FA		FB
	FC		FD
	FE		FF
	FG		FH
	FI		FJ
	FK		FL
	FM		FN
	FO		FP
	FQ		FR
	FU		FV
	FW		FX
	FY		FZ
	GA		GB
	GC		GD
	GE		GE
	GF		GF
	GG		GG
	GH		GH
	GI		GI
	GJ		GJ
	GK		GK
	GL		GL
	GM		GM
	GN		GN
	GO		GO
	GP		GP
	GQ		GQ
	GU		GU
	GV		GV
	GW		GW
	GX		GX
	GY		GY
	GZ		GZ
	HA		HA
	HB		HB
	HC		HC
	HD		HD
	HE		HE
	HF		HF
	HG		HG
	HH		HH
	HI		HI
	HJ		HJ
	HK		HK
	HL		HL
	HM		HM
	HN		HN
</			

1
ADD. #03



pds
Pomarico Design Studio Architecture, PLLC
Michael A. Pomarico, Architect
19 Front Street
Newburgh, NY 12550
33 Irving Place, 3rd Floor
New York, NY 10004

New York License No.: 019680
Telephone: 845.561.0448
Facsimile: 845.561.0446
pds@HealthCareDesign.com
www.healthcaredesign.com

ME ENGINEERING
Mechanical/Electrical Engineering Consultants

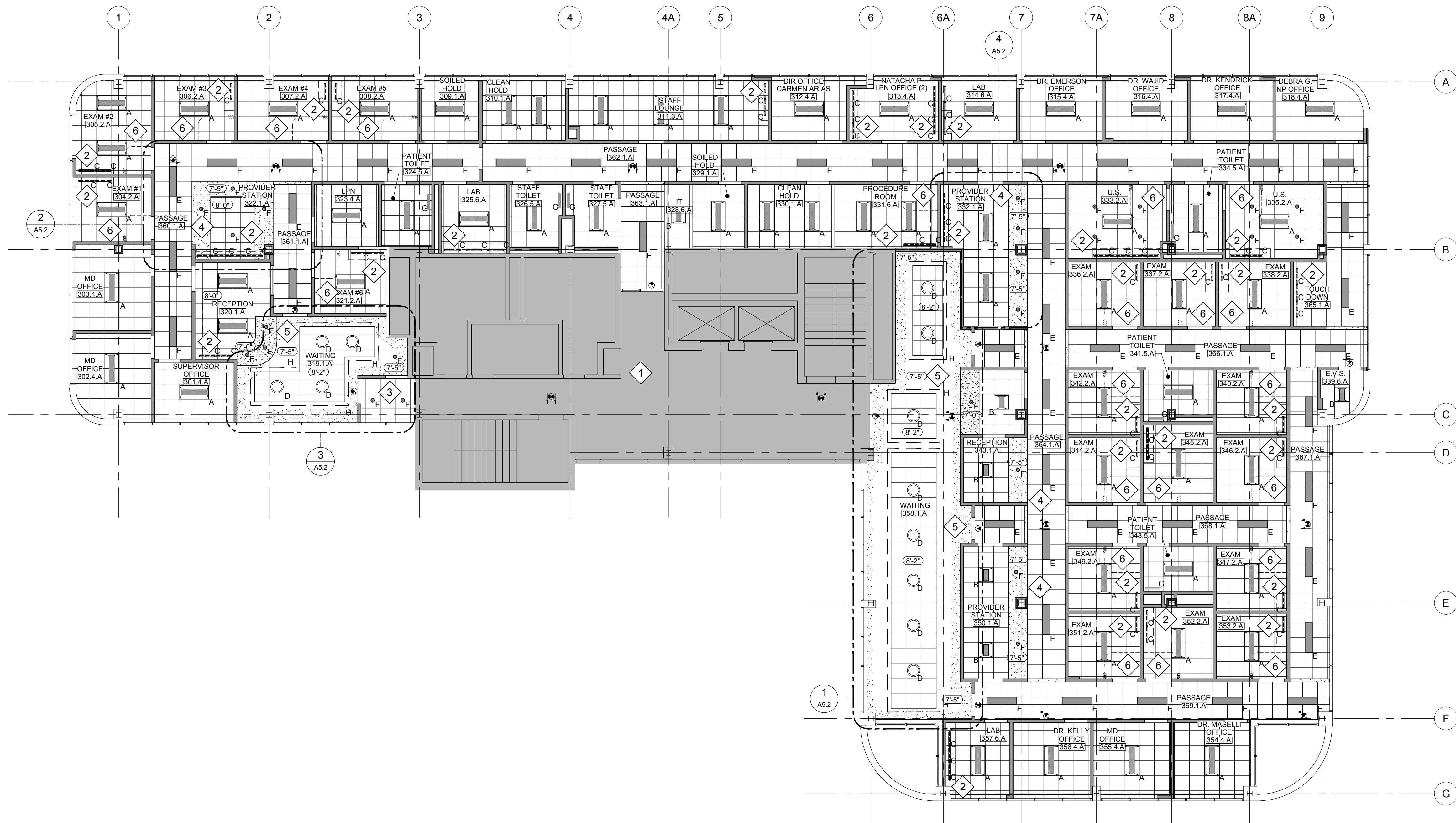
STRUCTURAL ENGINEER

[illegible]

IT IS A VIOLATION OF THE LAW FOR ANY PERSON, UNLESS ACTING UNDER THE DIRECTION OF A LICENSED ARCHITECT, TO ALTER THIS DOCUMENT IN ANY WAY. IF ALTERED, THE ALTERING ARCHITECT SHALL AFFIX HIS SEAL AND THE NOTATION "ALTERED BY" FOLLOWED BY HIS SIGNATURE AND THE DATE OF SUCH ALTERATION, AND A SPECIFIC DESCRIPTION OF THE ALTERATION.

PROJECT NUMBER	CON #
21035a	-
DATE	SCALE
02/06/2022	AS NOTED
DRAWING NUMBER	

A5.1



1
ADD. #03




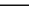




1	PROPOSED REFLECTED CEILING PLAN - THIRD FLOOR
A5.1	SCALE: 1/8" = 1'-0"

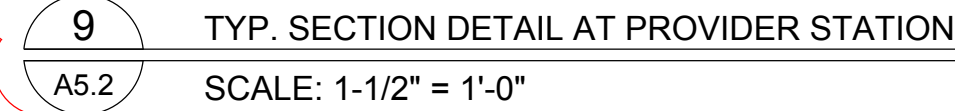
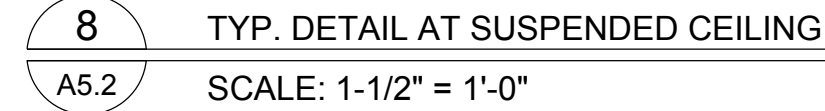
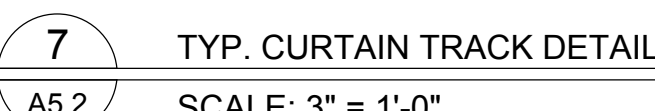
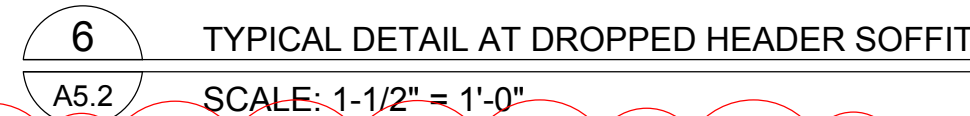
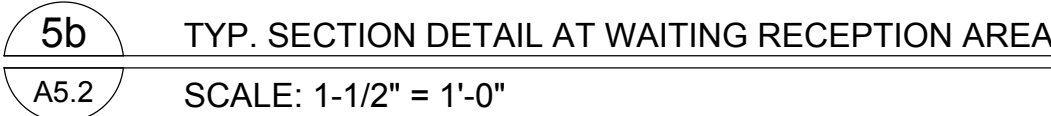


A diagram showing a cross-section of a mechanical part. The part has a complex, stepped profile. A specific region on the right side of the part is hatched with diagonal lines and labeled "AREA OF WORK" with a leader line pointing to it. A small black dot is located within this hatched area. In the bottom right corner, there is a logo consisting of a stylized 'K' inside a circle, followed by the letter 'N'.

A5.2

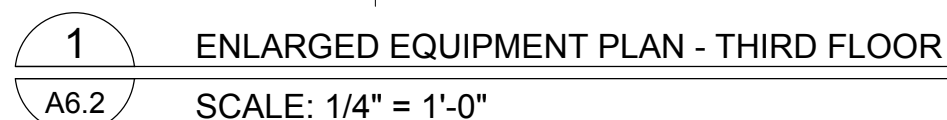
1. ALL WALL CABINETS TO HAVE SLOPED P.L.A.M. TOPS.
2. ELECTRICAL CONTRACTOR TO FIELD VERIFY VOLTAGES BEFORE SUBMITTING SHOP DRAWINGS FOR ANY FIXTURE.
3. ALL ACOUSTICAL CEILING TILES TO BE CENTERED EQUALLY IN ROOM, UNLESS OTHERWISE NOTED.
4. SEE FINISH SCHEDULE FOR FINISH TYPES.
5. ALL DIMENSIONS ARE TO CENTERLINE OF LIGHT FIXTURE UNLESS OTHERWISE NOTED.
6. REFER TO SHEET A5.2 FOR TYPICAL CEILING DETAILS.
7. REFER TO MEP DRAWINGS FOR ADDITIONAL INFORMATION
8. REFER TO ARCHITECTURAL DRAWINGS, INCLUDING INTERIOR ELEVATIONS AND EQUIPMENT PLANS FOR ADDITIONAL INFORMATION REGARDING LAYOUT AND EXTENT OF WORK REQUIRED.
9. ALL CEILINGS TO BE 8'-0" A.F.F. UNLESS NOTED OTHERWISE.
10. CONTRACTOR TO RELOCATE EXISTING 2X4 LIGHT FIXTURES AS REQUIRED BY NEW WORK.
11. CONTRACTOR TO RELOCATE EXISTING DIFFUSERS/GRILLES AS REQUIRED BY NEW WORK. REFER TO M.E.P DRAWINGS FOR MORE INFORMATION.

	NURSE CALL DOME LIGHT
	SECURITY/OBSERVATION CAMERA, CEILING MOUNTED & WALL MOUNTED
	CEILING MOUNTED DATA FOR WIRELESS ACCESS POINT
	CEILING MOUNTED DUPLEX FOR CEILING MOUNTED MONITOR OR TELEVISION.
	SUPPLY AIR GRILLE
	RETURN AIR GRILLE
	SPRINKLER HEAD
	SPEAKER (EXISTING SPEAKER WITH NEW COVERS)



1 AREA NOT IN WORK SCOPE.

A6.2



ARCHITECTURAL SYMBOLS	
FUNCTION	DESCRIPTION
EQUIPMENT IDENTIFIER	EQUIPMENT IDENTIFIER TAG. REFER TO EQUIPMENT MANUAL AND DETAILS FOR INFORMATION

GENERAL NOTES:

- REFER TO MEP DRAWINGS FOR ADDITIONAL INFORMATION.
- REFER TO INTERIOR ELEVATIONS FOR ADDITIONAL INFORMATION REGARDING LAYOUT, POWER, DATA .
- REFER TO SHEET A9.2 FOR TYPICAL WALL PROTECTION DETAILS.

EQUIPMENT PLAN KEY NOTES:

- 1 AREA NOT IN WORK SCOPE.

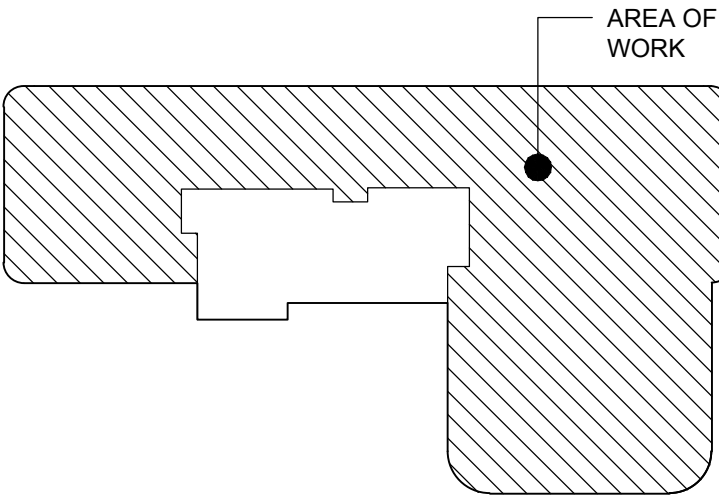
Montefiore

MONTEFIORE NYACK HOSPITAL

160 NORTH MIDLAND AVENUE
NYACK, NY 10960

HIGHLAND MEDICAL
OBYGN CLINICS
THIRD FLOOR
17 SQUADRON BLVD
NEW CITY, NY 10956

KEY PLAN: NOT TO SCALE



ARCHITECT
pds
Pomario Design Studio Architecture, PLLC
Michael A. Pomario, Architect
19 Front Street
Newburgh, NY 12550
33 Irving Place, 3rd Floor
New York, NY 10004
New York License No.: 019680
Telephone: 845.561.0448
Facsimile: 845.561.0446
pds@healthcaredesign.com
www.healthcaredesign.com

MEP ENGINEER
ME ENGINEERING
Mechanical/Electrical Engineering Consultants
Schenectady | Rochester | Buffalo | Syracuse
433 STATE STREET, SUITE 410
SCHENECTADY, NY 12305
518.533.2171
www.meengineering.com

STRUCTURAL ENGINEER

ISSUED DOCUMENTS:			
No.	Date	Description	
1	2/11/22	BID ISSUE - ARCH	
1	3/16/22	ADDENDA #03	

SEAL
IT IS A VIOLATION OF THE LAW FOR ANY PERSON, UNLESS ACTING UNDER THE DIRECTION OF A LICENSED ARCHITECT, TO ALTER THIS DOCUMENT IN ANY WAY. IF ALTERED, THE ALTERING ARCHITECT SHALL AFFIX HIS SEAL AND THE NOTATION "ALTERED BY" FOLLOWED BY HIS SIGNATURE AND THE DATE OF SUCH ALTERATION, AND A SPECIFIC DESCRIPTION OF THE ALTERATION.

DRAWING TITLE:
**ENLARGED EQUIPMENT
PLAN - THIRD FLOOR**

PROJECT NUMBER 21035a	CON # -
DATE 02/06/2022	SCALE AS NOTED
DRAWING NUMBER	

A6.3



1. REFER TO MEP DRAWINGS FOR ADDITIONAL INFORMATION.
2. REFER TO INTERIOR ELEVATIONS FOR ADDITIONAL INFORMATION REGARDING LAYOUT, POWER, DATA .
3. REFER TO SHEET A9.2 FOR TYPICAL WALL PROTECTION DETAILS.

1 AREA NOT IN WORK SCOPE.

KEY PLAN: NOT TO SCALE



Pomario Design Studio Architecture, PLLC
Michael A. Pomario, Architect
 19 Front Street
 Newburgh, NY 12550
 33 Irving Place, 3rd Floor
 New York, NY 10004

New York License No.: 019680
 Telephone: 845.561.0448
 Facsimile: 845.561.0446
 pds@HealthCareDesign.com
 www.healthcaredesign.com

Schenectady | Rochester | Buffalo | Syracuse

433 STATE STREET, SUITE 410
SCHENECTADY, NY 12305

518.533.2171
www.meengineering.com

[illegible]

IT IS A VIOLATION OF THE LAW FOR ANY PERSON, UNLESS ACTING UNDER THE DIRECTION OF A LICENSED ARCHITECT, TO ALTER THIS DOCUMENT IN ANY WAY. IF ALTERED, THE ALTERING ARCHITECT SHALL AFFIX HIS SEAL AND THE NOTATION "ALTERED BY" FOLLOWED BY HIS SIGNATURE AND THE DATE OF SUCH ALTERATION, AND A SPECIFIC DESCRIPTION OF THE ALTERATION.

ENLARGED EQUIPMENT PLAN - THIRD FLOOR

PROJECT NUMBER	CON #
21035a	-
DATE	SCALE
02/06/2022	AS NOTED
DRAWING NUMBER	

A6.4

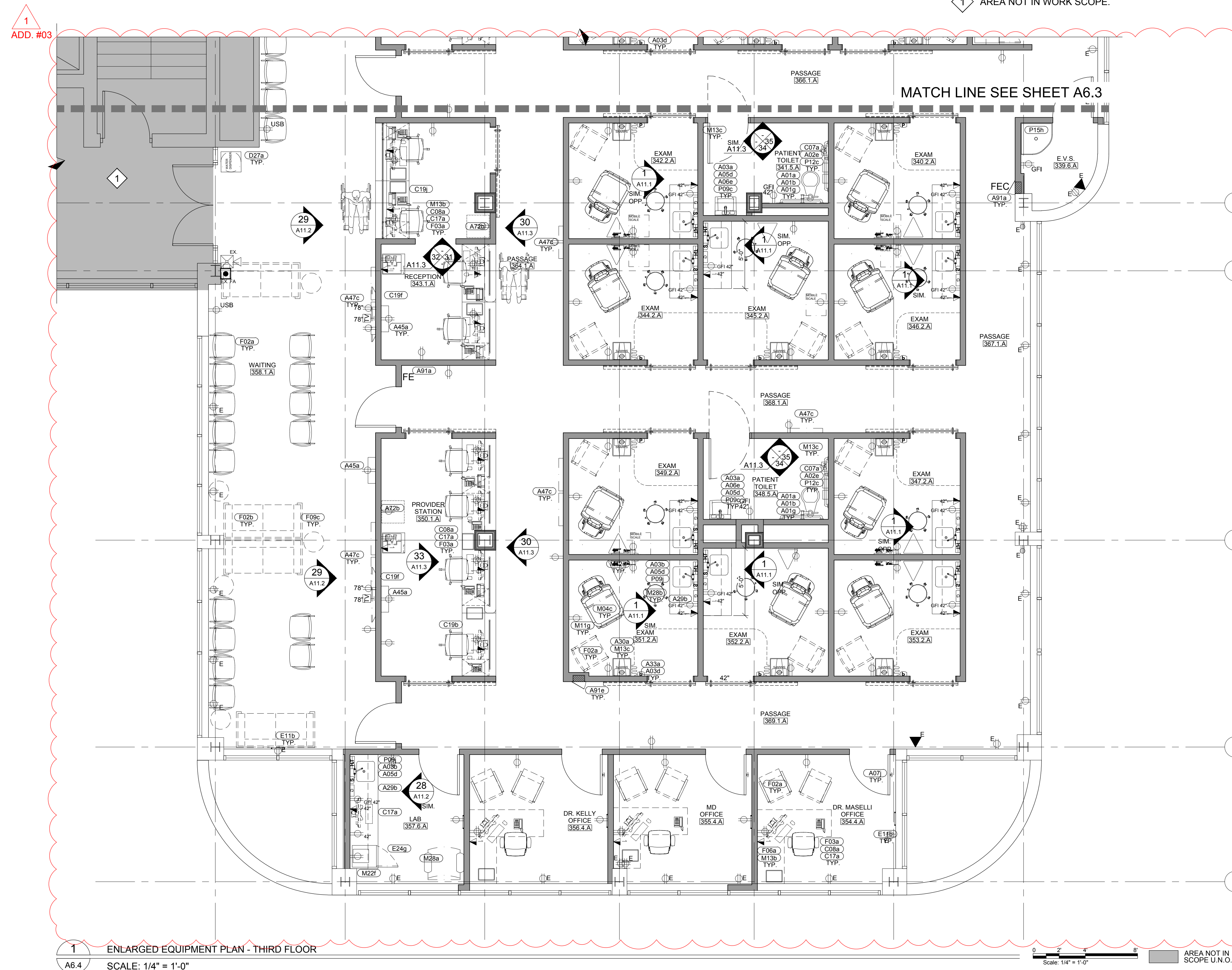


Diagram illustrating the components and dimensions of a door frame assembly:

- Header or Double Studs
- Gypsum Board Wall
- Jamb Anchor
- Hollow Metal Frame
- Door Opq. (Door Opening)
- Dimensions: 2", VARIES, 2"
- Vertical dimensions: 1/2", 1/2", 1/2"

Diagram illustrating the components and dimensions of a sliding door system:

- GYPSUM BOARD WALL**: The wall structure on the left.
- HEADER OR DOUBLE STUDS**: The top support structure.
- SOLID BLOCKING AS REQUIRED**: The vertical support structure.
- SLIDING DOOR SYSTEM**: The mechanism for the door to slide.
- Dimensions**:
 - $2\frac{1}{8}$: Dimension for the top header area.
 - VARIES**: Dimension for the height of the door opening.

Diagram illustrating the components and dimensions of a door jamb assembly:

- HOLLOW METAL FRAME**: The main structural component.
- JAMB ANCHOR**: The fastener used to secure the frame.
- DOUBLE JACK STUDS**: The vertical support members.
- GYPSUM BOARD WALL**: The wall material.
- Dimensions**:
 - Vertical dimensions: 2" (top), 2" (middle), 2" (bottom).
 - Horizontal dimensions: 2" (left), 2" (right).
 - Labels: VARIES (vertical), 2" (horizontal), DOOR OPG (door opening).

Diagram illustrating the components and dimensions of a door stop assembly:

- EMERGENCY DOOR STOP
- HOLLOW METAL FRAME
- JAMB ANCHOR
- DOUBLE JACK STUDS
- VARIES (dimension for height)
- GYPSUM BOARD WALL
- 2" (dimension for width)

Technical drawings showing door jamb and pull side clearances. The top drawing shows a side view of a door with a 36" CLEAR and a 2" gap. The bottom drawing shows a top view of a door with a 2" gap and a 1 1/2" gap. The drawings are labeled JAMB AT SILL SIDE and JAMB AT PULL SIDE.

A technical cross-section diagram of a door assembly. The diagram shows two door panels meeting at a central pivot point. Labels include:

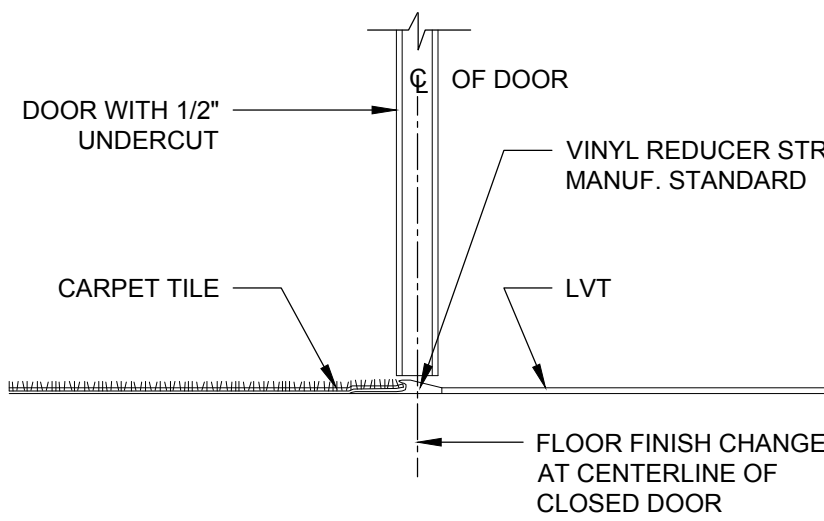
- CRL STANDARD SIDELITE RAIL CLAD FINISH**: Points to the upper rail section.
- CRL STANDARD DOOR RAIL CLAD FINISH**: Points to the lower rail section.
- 23³/₄" PIVOT POINT**: Dimension across the top of the door panels.
- 7"**: Dimension across the bottom of the door panels.
- 1/2" TEMPERED GLASS PIVOT POINT**: Points to the glass insert in the center of the door panels.
- DOOR SIZE**: Dimension across the width of the door panels.
- DOOR OPENING**: Dimension across the base of the door frame.
- 1-¹/₈"**: Dimension indicating the gap or offset between components.

JAMB TYPE 4
CRL WEDGE-LOCK SYSTEM
- 4" TALL SQUARE RAILS

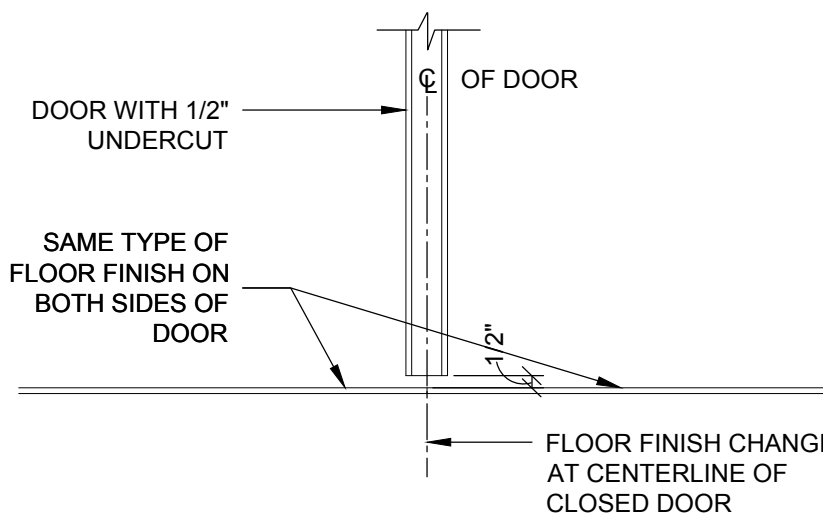
Diagram illustrating the relationship between the door, threshold, and floor finish:

- DOOR WITH 1/2" UNDERCUT
- OF DOOR
- ALUMINUM REDUCED STRIP, SCHLUTER OF EQUAL
- LVT
- CERAMIC TILE
- FLOOR FINISH CHANGE AT CENTERLINE OF CLOSED DOOR

① DISSIMILAR TYPES OF FLOOR FINISH ON EACH SIDE OF A
DOOR - CERAMIC TILE TO LUXURY VINYL TILE



② DISSIMILAR TYPES OF FLOOR FINISH ON EACH SIDE OF A DOOR - CARPET TILE TO LUXURY VINYL TILE



3 SAME TYPE OF FLOOR FINISH ON BOTH SIDES OF A DOOR

Diagram of a door with dimensions and labels:

- Vertical dimension on the left: SEE SCHEDULE
- Horizontal dimension at the top: SEE SCHEDULE
- Door handle: A small vertical line with a horizontal bar.
- Diagonal dashed lines: Two lines forming a triangle in the center of the door.

Diagram of a rectangular panel with dimensions and labels:

- Overall height: 43" MAX
- Overall width: SEE SCHEDULE
- Top horizontal dimension: 8"
- Left vertical dimension: 8"
- Bottom-left corner dimension: 4"
- Bottom horizontal dimension: SEE SCHEDULE

7'-0"

SEE SCHEDULE

Technical drawing of a door assembly. The drawing shows a side view of a door with a handle and a lock mechanism. Dimensions are indicated by arrows and text: "SEE SCHEDULE" for the overall height and width, and "SEE SCHEDULE" for the door thickness. The door is shown in a closed position, with a dashed line indicating the swing path. The handle is a vertical bar, and the lock mechanism is a small rectangular component on the edge of the door.

SINGLE FULL HEIGHT WITH CLEAR 1/2"
TEMPERED SAFETY GLASS & 'CRL'
WEDGE-LOCK DOOR RAIL SYSTEM, 4" TALL
SQUARE RAILS - FINISH CLEAR SATIN
ANODIZED ALUMINUM, RECESSED ADA 5LBS
OPEN FORCE COMPLIANT OH CLOSER W/
HOLD-OPEN, FLOOR PIVOT, ASSISTED OPENER

NO.	TYPE	SIZE	ROOM NAME	LABEL	HEAD	JAMB	SILL	STOP	CLOSER	HARDWARE	FUNCTION	REMARKS	ACCESS CONTROL
301	1	3'-0" X 7'-0"	SUPERVISOR OFFICE	-	1	1	2	WALL	-	1.0	CLASSROOM	-	-
302	1	3'-0" X 7'-0"	MD OFFICE	-	1	1	2	WALL	-	1.0	CLASSROOM	-	-
303	1	3'-0" X 7'-0"	MD OFFICE	-	1	1	2	WALL	-	1.0	CLASSROOM	-	-
304	1	3'-0" X 7'-0"	EXAM #1	-	1	1	3	WALL	-	11.0	PASSAGE	-	-
305	1	3'-0" X 7'-0"	EXAM #2	-	1	1	3	WALL	-	11.0	PASSAGE	-	-
306	3	3'-4" X 7'-0"	EXAM #3	-	3	3	3	-	SOFT CLOSE	16.0	PASSAGE	-	-
307	3	3'-4" X 7'-0"	EXAM #4	-	3	3	3	-	SOFT CLOSE	16.0	PASSAGE	-	-
308	3	3'-4" X 7'-0"	EXAM #5	-	3	3	3	-	SOFT CLOSE	16.0	PASSAGE	-	-
309	1	3'-0" X 7'-0"	SOILED HOLD	-	1	1	3	WALL	-	7.0	STORE ROOM	-	-
310	1	3'-0" X 7'-0"	CLEAN HOLD	-	1	1	3	WALL	-	7.0	STORE ROOM	-	-
311	3	3'-4" X 7'-0"	STAFF LOUNGE	-	3	3	3	-	SOFT CLOSE	16.0	PASSAGE	-	-
312	3	3'-4" X 7'-0"	DIR OFFICE	-	3	3	3	-	SOFT CLOSE	17.0	CLASSROOM	-	-
313	3	3'-4" X 7'-0"	LPN OFFICE (2)	-	3	3	2	-	SOFT CLOSE	17.0	CLASSROOM	-	-
314	2	3'-0" X 7'-0"	LAB	-	1	1	3	WALL	-	1.0	CLASSROOM	-	-
315	1	3'-0" X 7'-0"	DR. EMERSON OFFICE	-	1	1	2	WALL	-	1.0	CLASSROOM	-	-
316	1	3'-0" X 7'-0"	DR. WASIA OFFICE	-	1	1	2	WALL	-	1.0	CLASSROOM	-	-
317	1	3'-0" X 7'-0"	DR. KENDRICK OFFICE	-	1	1	2	WALL	-	1.0	CLASSROOM	-	-
318	1	3'-0" X 7'-0"	DEBRA G. NP OFFICE	-	1	1	2	WALL	-	1.0	CLASSROOM	-	-
319	2	3'-4" X 7'-0"	WAITING	-	3	3	3	-	SOFT CLOSE	16.0	PASSAGE	-	-
319a	4	3'-0" X 7'-0"	WAITING	-	4	4	1	-	ADA CLOSER	97.0	ENTRY	WAVE TO OPEN. COORDINATE KEYING W/ OTHER KEYLOCKS	•
320	3	3'-4" X 7'-0"	RECEPTION	-	3	3	3	-	SOFT CLOSE	16.0	PASSAGE	-	-
321	3	3'-4" X 7'-0"	EXAM #6	-	3	3	3	-	SOFT CLOSE	16.0	PASSAGE	-	-
323	3	3'-4" X 7'-0"	LPN	-	3	3	3	-	SOFT CLOSE	17.0	CLASSROOM	-	-
324	1	3'-0" X 7'-0"	PATIENT TOILET	-	2	2	1	WALL	-	9.0	EMERGENCY EGRESS WITH PRIVACY LATCH	-	-
325	2	3'-0" X 7'-0"	LAB	-	1	1	3	WALL	-	1.0	CLASSROOM	-	-
326	1	3'-0" X 7'-0"	STAFF TOILET	-	1	1	3	WALL	-	6.0	PRIVACY	-	-
327	1	3'-0" X 7'-0"	STAFF TOILET	-	1	1	3	WALL	-	6.0	PRIVACY	-	-
328	E.T.R	6'-4" X 7'-0"	IT CLOSET	-	-	-	-	-	-	98.0	-	-	-
329	1	3'-0" X 7'-0"	SOILED HOLD	-	1	1	3	WALL	-	7.0	STORE ROOM	-	-
330	2	3'-0" X 7'-0"	CLEAN HOLD	-	1	1	3	WALL	-	7.0	STORE ROOM	-	-
331	3	3'-4" X 7'-0"	PROC. ROOM	-	3	3	3	-	SOFT CLOSE	16.0	PASSAGE	-	-
332a	3	3'-4" X 7'-0"	PROVIDER STATION	-	3	3	3	-	SOFT CLOSE	16.0	PASSAGE	-	-
332b	3	3'-4" X 7'-0"	PROVIDER STATION	-	3	3	3	-	SOFT CLOSE	16.0	PASSAGE	-	-
333	3	3'-4" X 7'-0"	U.S.	-	3	3	3	-	SOFT CLOSE	16.0	PASSAGE	-	-
334	1	3'-0" X 7'-0"	PATIENT TOILET	-	2	2	1	O.H	-	10.0	EMERGENCY EGRESS WITH PRIVACY LATCH	-	-
334a	1	3'-0" X 7'-0"	PATIENT TOILET	-	2	2	1	O.H	-	10.0	EMERGENCY EGRESS WITH PRIVACY LATCH	-	-
334b	1	3'-0" X 7'-0"	PATIENT TOILET	-	2	2	1	O.H	-	10.0	EMERGENCY EGRESS WITH PRIVACY LATCH	-	-
335	3	3'-4" X 7'-0"	U.S.	-	3	3	3	-	SOFT CLOSE	16.0	PASSAGE	-	-
336	3	3'-4" X 7'-0"	EXAM	-	3	3	3	-	SOFT CLOSE				

DOORS AND FRAMES ARE RATED AND GIVEN A LABEL AFTER EXTENSIVE TESTING BY THE UNDERWRITERS LABORATORY. RATED DOORS MUST BE SELF-CLOSING AND MUST HAVE A POSITIVE LATCH.

HARDWARE SETS:

1. PASSAGE LATCH; 1-1/2 PAIR BUTTS; CLOSER; WALL STOP; SILENCERS
2. STORE ROOM LATCH; 1-1/2 PAIR BUTTS; WALL STOP; SILENCERS
3. PASSAGE LATCH; 1-1/2 PAIR BUTTS; WALL STOP; SILENCERS.
4. PRIVACY LATCH; 1-1/2 PAIR BUTTS; CLOSER; WALL STOP; SILENCERS.
5. PASSAGE LATCH; 1-1/2 PAIR BUTTS; OVERHEAD STOP; SILENCERS.
6. CLASSROOM LATCH; 1-1/2 PAIR BUTTS; WALL STOP; SILENCERS.
7. PRIVACY LATCH; 1-1/2 PAIR BUTTS EMERGENCY EGRESS STRIKE; CLOSER; WALL STOP; SILENCERS.
8. CLASSROOM LATCH; 1-1/2 PAIR BUTTS; CLOSER; SILENCERS.
9. ENTRY LATCH 1 1/2 PAIR BUTTS. CLOSER, SILENCERS, WALLSTOP

1. REFER TO DOOR/HARDWARE SPECIFICATIONS IN SPECIFICATION MANUAL FOR DOOR HARDWARE SCHEDULE AND ADDITIONAL REQUIREMENTS.
2. ALL FRAMES SHALL BE FULLY WELDED UNLESS OTHERWISE NOTED. PROVIDE DEDUCT ALT FOR K.D FRAMES
3. ALL DOORS SHALL BE SOLID CORE UNLESS OTHERWISE NOTED.
4. IT IS THE RESPONSIBILITY OF THE CONTRACTOR TO COORDINATE FRAME MODIFICATIONS OR ELEC. ACCESS CONTROL DEVICES.
5. PROVIDE SAFETY GLAZING IN ALL LOCATIONS DEEMED TO BE HAZARDOUS, IN ACCORDANCE WITH IBC SECTION 2406 "SAFETY GLAZING." SPECIFIC LOCATIONS INCLUDE, BUT ARE NOT LIMITED TO: GLAZING IN DOORS, GLAZING ADJACENT TO DOORS, GLAZING IN PANES 9 SQ. FT. OR GREATER, WHERE BOTTOM EDGE IS LESS THAN 18 INCHES ABOVE FLOOR. PROVIDE FIRE RATED GLAZING LITES IN ALL FRR DOOR ASSEMBLIES. ALL GLAZING MUST HAVE APPROPRIATE, VISIBLE LABEL.
6. ALL THRESHOLDS SHALL BE ICC/ANSI A117.1 - 2003 COMPLIANT. CHANGES IN LEVEL OF UP TO 1/4" MAY BE VERTICAL. CHANGES FROM 1/4" UP TO 1/2" MUST BE BEVELED AT EDGES, WITH SLOPE NOT STEEPER THAN 1:2. CHANGES IN BEYOND 1/2" IN HEIGHT MUST BE RAMPED. SEE ALSO A2 SERIES DRAWINGS FOR ADDITIONAL DETAIL AND REQUIREMENTS.
7. COORDINATE PLACEMENT OF ARMOUR PLATES SUCH THAT PLATES ARE LOCATED ON THE ACTIVE SIDE OF THE DOOR.
8. DOORS, FRAMES AND HARDWARE MUST NOT GO INTO FABRICATION OR PROCUREMENT UNTIL ALL SHOP DRAWINGS AND SUBMITTALS HAVE BEEN APPROVED.
9. IT IS THE CONSTRUCTION MANAGERS RESPONSIBILITY TO FULLY COORDINATE ALL FRAME THROAT DEPTHS WITH FIELD CONDITIONS.
10. ALL FIRE RATED DOORS AND FRAMES MUST BEAR A UL LISTED LABEL WHICH MUST REMAIN FIXED TO THE DOOR AND VISIBLE AT ALL TIMES.
11. REFER TO ELEC. DRAWINGS FOR CUTOUTS REQUIRED IN BUCKS FOR ELEC. AND MECH. DEVICES.
12. CONTRACTOR SHALL PROVIDE BACK-BOXES, CONDUIT STUBS, RACEWAYS, PUSH BUTTONS, LOCKS, AND ELECTRIC STRIKES IN DOOR FRAMES AS PART OF BASE SCOPE. COORDINATION WITH HOSPITAL AS REQUIRED FOR NEW INSTALLATION.
13. CORING REQUIREMENTS SHALL BE CORBIN-RUSSWIN 6 PIN L4 SYSTEM.

Diagram illustrating a cross-section of a workpiece with a central hole. A label "AREA OF WORK" points to the right side of the hole.



pds
 Pomarico Design Studio Architecture, PLLC
 Michael A. Pomarico, Architect
 19 Front Street
 Newburgh, NY 12550
 33 Irving Place, 3rd Floor
 New York, NY 10004

New York License No.: 019680
 Telephone: 845.561.0448
 Facsimile: 845.561.0446
 pds@HealthCareDesign.com
 www.healthcaredesign.com

ME ENGINEERING
Mechanical/Electrical Engineering Consultants
Schenectady | Rochester | Buffalo | Syracuse

433 STATE STREET, SUITE 410
SCHENECTADY, NY 12305

518.533.2171
www.meengineering.com

ISSUED DOCUMENTS:

[illegible]

IT IS A VIOLATION OF THE LAW FOR ANY PERSON, UNLESS ACTING UNDER THE DIRECTION OF A LICENSED ARCHITECT, TO ALTER THIS DOCUMENT IN ANY WAY. IF ALTERED, THE ALTERING ARCHITECT SHALL AFFIX HIS SEAL AND THE NOTATION "ALTERED BY" FOLLOWED BY HIS SIGNATURE AND THE DATE OF SUCH ALTERATION, AND A SPECIFIC DESCRIPTION OF THE ALTERATION.

DOOR & HARDWARE SCHEDULE AND MISCELLANEOUS DETAILS

PROJECT NUMBER	CON #
21035a	-
DATE	SCALE
02/06/2022	AS NOTED
DRAWING NUMBER	

FIGURE 1: PARTITION TYPES

A NON-RATED PARTITION, TERMINATING 6" ABOVE CEILING OR TO DECK CONTINGENT ON CONDITIONS ENCOUNTERED
 NOTE: STUD WIDTH MAY VARY AS NECESSARY TO ACCOMMODATE CONDITIONS
 REFERENCE STUD HEIGHT SCHEDULE FOR APPROPRIATE SIZE SELECTION.

B NON-RATED SUITE SEPARATION / CORRIDOR PARTITION, TERMINATING AT UNDERSIDE OF STRUCTURE ABOVE SMOKE TIGHT, GYP. BD. BOTH SIDES
 NOTE: STUD WIDTH MAY VARY AS NECESSARY TO ACCOMMODATE CONDITIONS
 REFERENCE STUD HEIGHT SCHEDULE FOR APPROPRIATE SIZE SELECTION.
 NOTE: SEAL ALL PENETRATIONS WITH APPROVED SAFING MATERIALS TO LIMIT THE PASSAGE OF SMOKE.

C NON-RATED CHASE PARTITION, TERMINATING 6" ABOVE CEILING, OR TO DECK* CONTINGENT ON CONDITIONS ENCOUNTERED
 NOTE: STUD WIDTH MAY VARY AS NECESSARY TO ACCOMMODATE CONDITIONS REFERENCE STUD HEIGHT SCHEDULE FOR APPROPRIATE SIZE SELECTION.
 NOTE: WHERE PART OF A SMOKE-RESISTIVE PARTITION SYSTEM, SEAL ALL PENETRATIONS WITH APPROVED SAFING MATERIALS TO LIMIT THE PASSAGE OF SMOKE.

D MIN. 1-HOUR FIRE-RESISTANCE RATED PARTITION, TERMINATING AT UNDERSIDE OF STRUCTURE ABOVE SMOKE TIGHT, TYPE "X" ONE SIDE, TYPE "X" MOLD RESISTANT OTHER SIDE
 NOTE: STUD WIDTH MAY VARY AS NECESSARY TO ACCOMMODATE CONDITIONS REFERENCE STUD HEIGHT SCHEDULE FOR APPROPRIATE SIZE SELECTION.
 NOTE: SEAL ALL PENETRATIONS WITH APPROVED SAFING MATERIALS TO LIMIT THE PASSAGE OF SMOKE.
 UL# U432 1 HR FIRE RESISTANCE RATING OR EQUAL

E NON-RATED INSULATED WINDOW CLOSURE PARTITION:
 NOTE: STUD WIDTH MAY VARY AS NECESSARY TO ACCOMMODATE CONDITIONS.
 SEE DETAIL THIS SHEET FOR STUD AND TRACK REPLACEMENT WHERE REQUIRED DUE TO RUST DETERIORATION.
 NOTE: SEAL ALL PENETRATIONS WITH APPROVED SAFING MATERIALS TO LIMIT THE PASSAGE OF SMOKE.

F MIN. 1-HOUR FIRE-RESISTANCE RATED CHASE PARTITION, TERMINATING AT UNDERSIDE OF STRUCTURE ABOVE SMOKE TIGHT, (1) LAYER TYPE "X" EACH SIDE
 NOTE: STUD WIDTH MAY VARY AS NECESSARY TO ACCOMMODATE CONDITIONS REFERENCE STUD HEIGHT SCHEDULE FOR APPROPRIATE SIZE SELECTION.
 NOTE: WHERE PART OF A SMOKE-RESISTIVE PARTITION SYSTEM, SEAL ALL PENETRATIONS WITH APPROVED SAFING MATERIALS TO LIMIT THE PASSAGE OF SMOKE.
 UL# U420 1 HR FIRE RESISTANCE RATING OR EQUAL

SEE WALL PARTITIONS
FOR FURTHER INFORMATION

SPECIFIED CRASH RAIL, SEE MANUFACTURES SPECIFICATIONS

SHEET WALL PROTECTION, APPLY CONSTRUCTION ADHESIVE AS REQUIRED PER MANUF. SPECS.

$\frac{5}{8}$ " FIRE RETARDANT TREATED PLYWOOD BLOCKING TO 32" AFF.

SPECIFIED CRASH RAIL, SEE MANUFACTURES SPECIFICATIONS

SCHEDULED BASE

6"

30" A.F.F.

2"

2"

① CR-01 - CRASH RAIL

② CR-02 - WALL PANEL

③ TYPICAL 2" 90° CORNER GUARD (GC)

Diagram illustrating the area of work for the first operation (turning) on a lathe. The workpiece is a cylindrical part with a central rectangular hole. The area of work is indicated by a black dot on the right vertical face, labeled "AREA OF WORK".

pods



STRUCTURAL ENGINEER

[illegible]

IT IS A VIOLATION OF THE LAW FOR ANY PERSON, UNLESS ACTING UNDER THE DIRECTION OF A LICENSED ARCHITECT, TO ALTER THIS DOCUMENT IN ANY WAY. IF ALTERED, THE ALTERING ARCHITECT SHALL AFFIX HIS SEAL AND THE NOTATION "ALTERED BY" FOLLOWED BY HIS SIGNATURE AND THE DATE OF SUCH ALTERATION, AND A SPECIFIC DESCRIPTION OF THE ALTERATION.

PROJECT NUMBER	CON #
21035a	-
DATE	SCALE
02/06/2022	AS NOTED
DRAWING NUMBER	

A9.2

KEY PLAN: NOT TO SCALE



ARCHITECT

pds
Pomario Design Studio Architecture, PLLC
Michael A. Pomario, Architect
19 Front Street
Newburgh, NY 12550
33 Irving Place, 3rd Floor
New York, NY 10004

New York License No.: 019680
Telephone: 845.561.0448
Facsimile: 845.561.0446
pds@HealthCareDesign.com
www.healthcaredesign.com

MEP ENGINEER



Mechanical/Electrical Engineering Consultants

Schenectady | Rochester | Buffalo | Syracuse

433 STATE STREET, SUITE 410
SCHENECTADY, NY 12305

518.533.2171
www.meengineering.com

STRUCTURAL ENGINEER

ISSUED DOCUMENTS:

[illegible]

SEAL

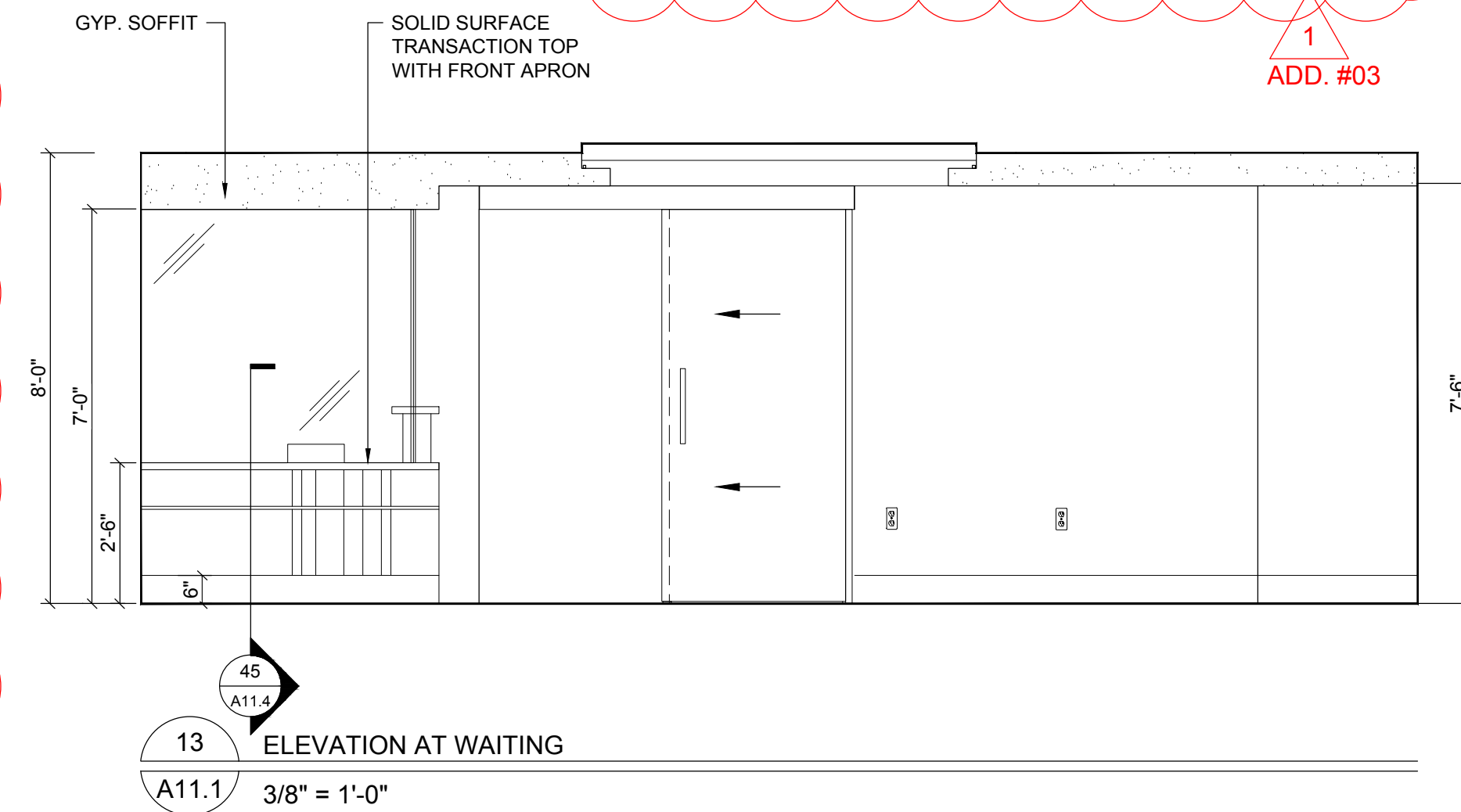
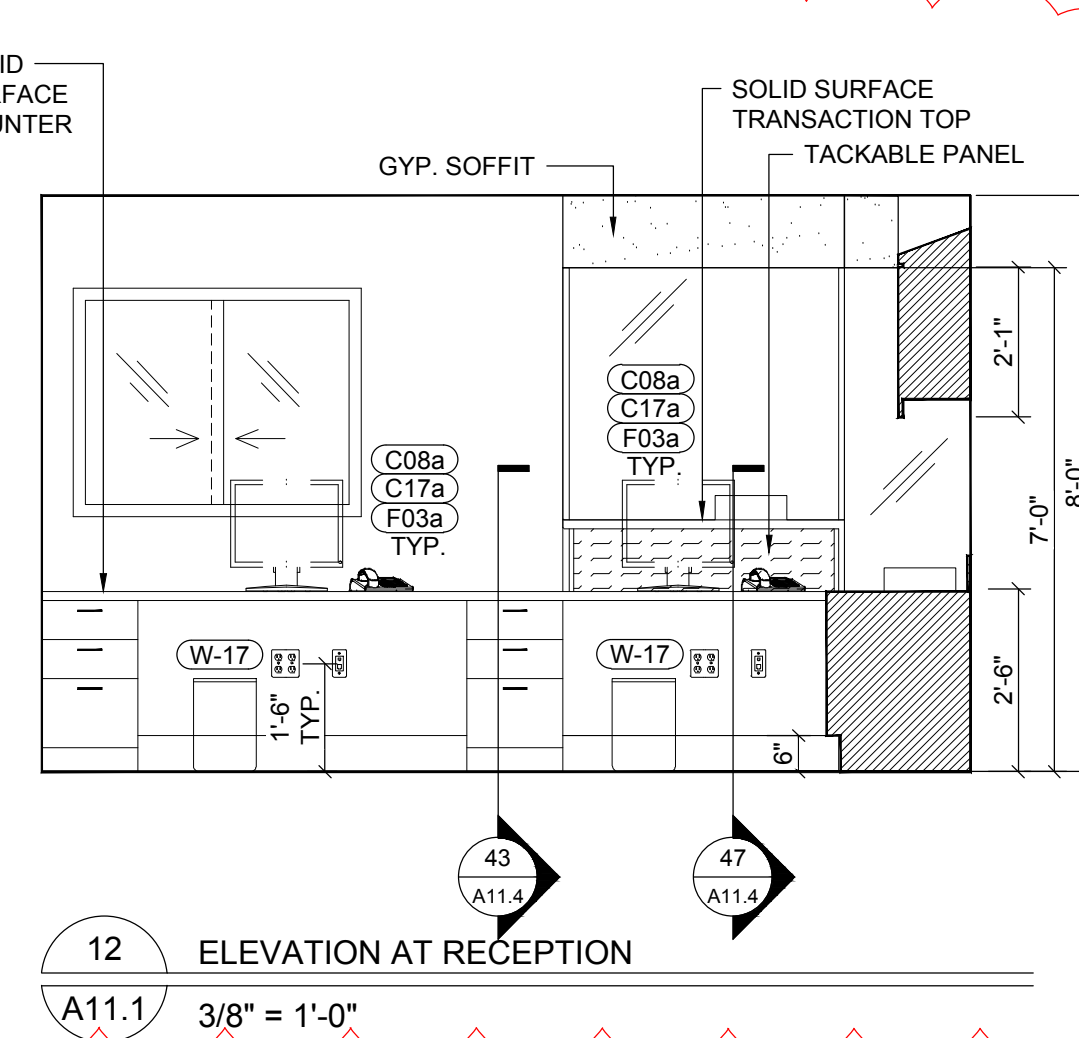
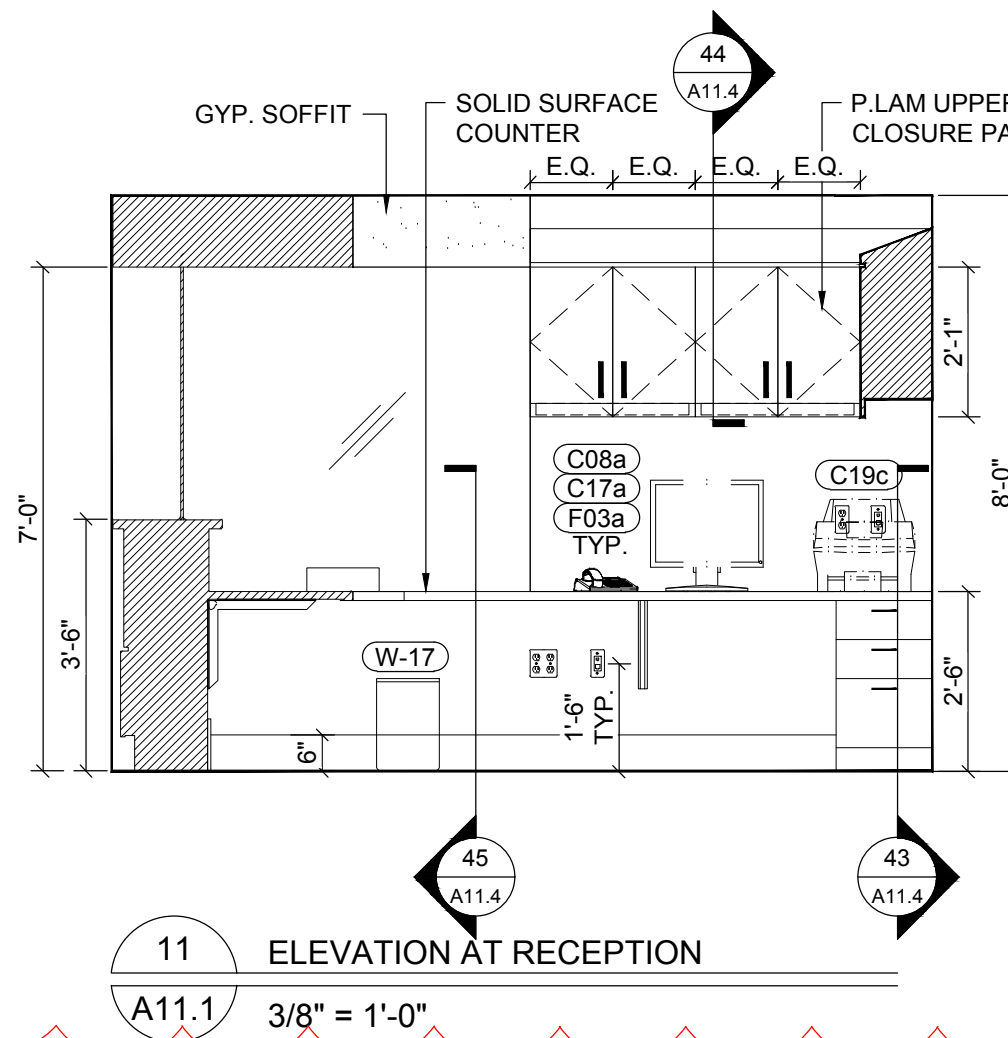
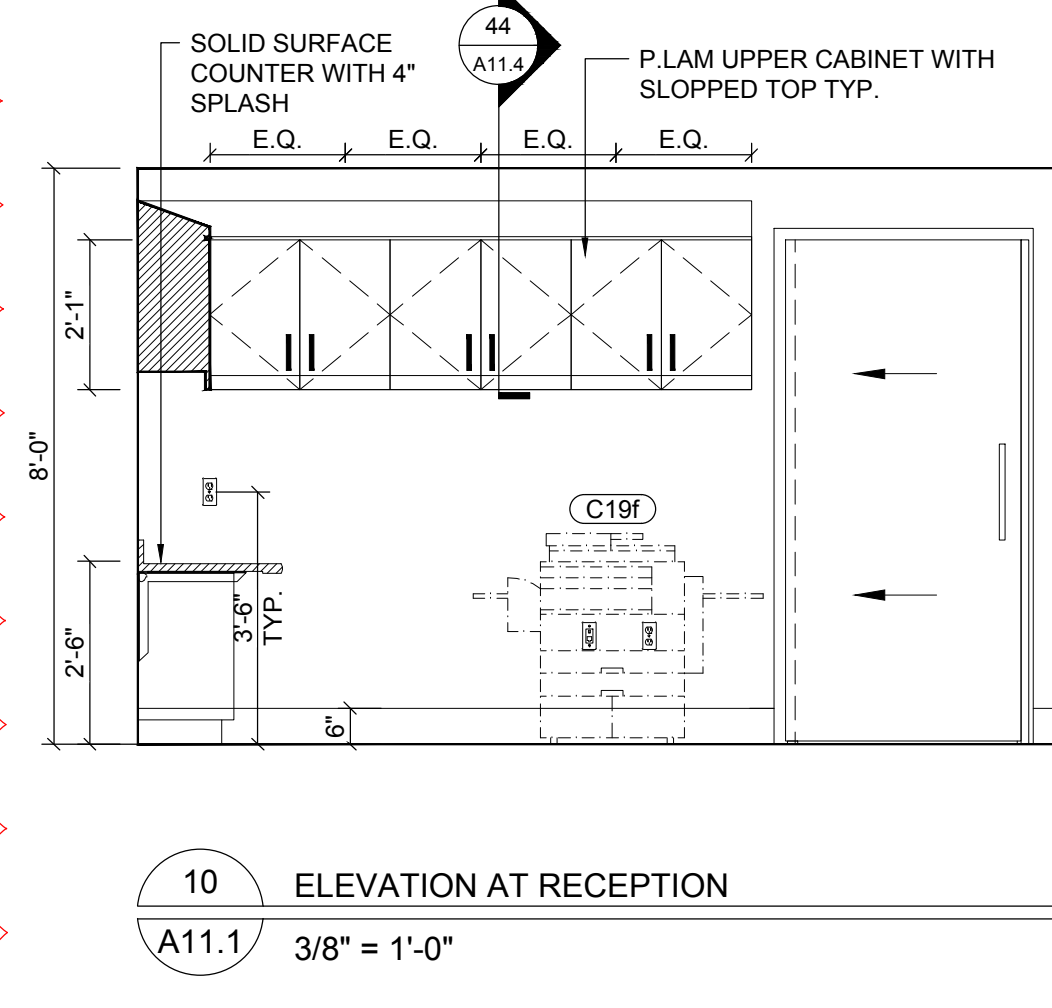
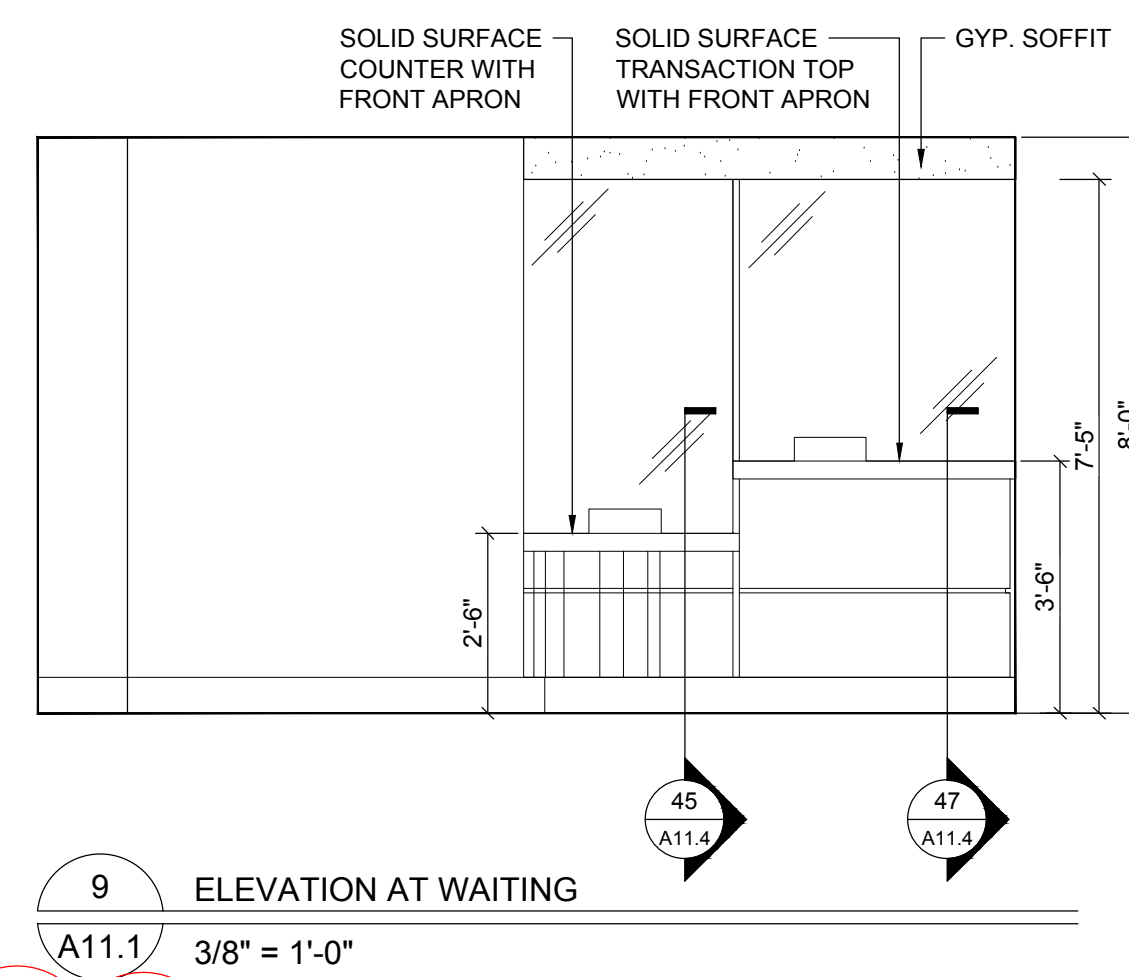
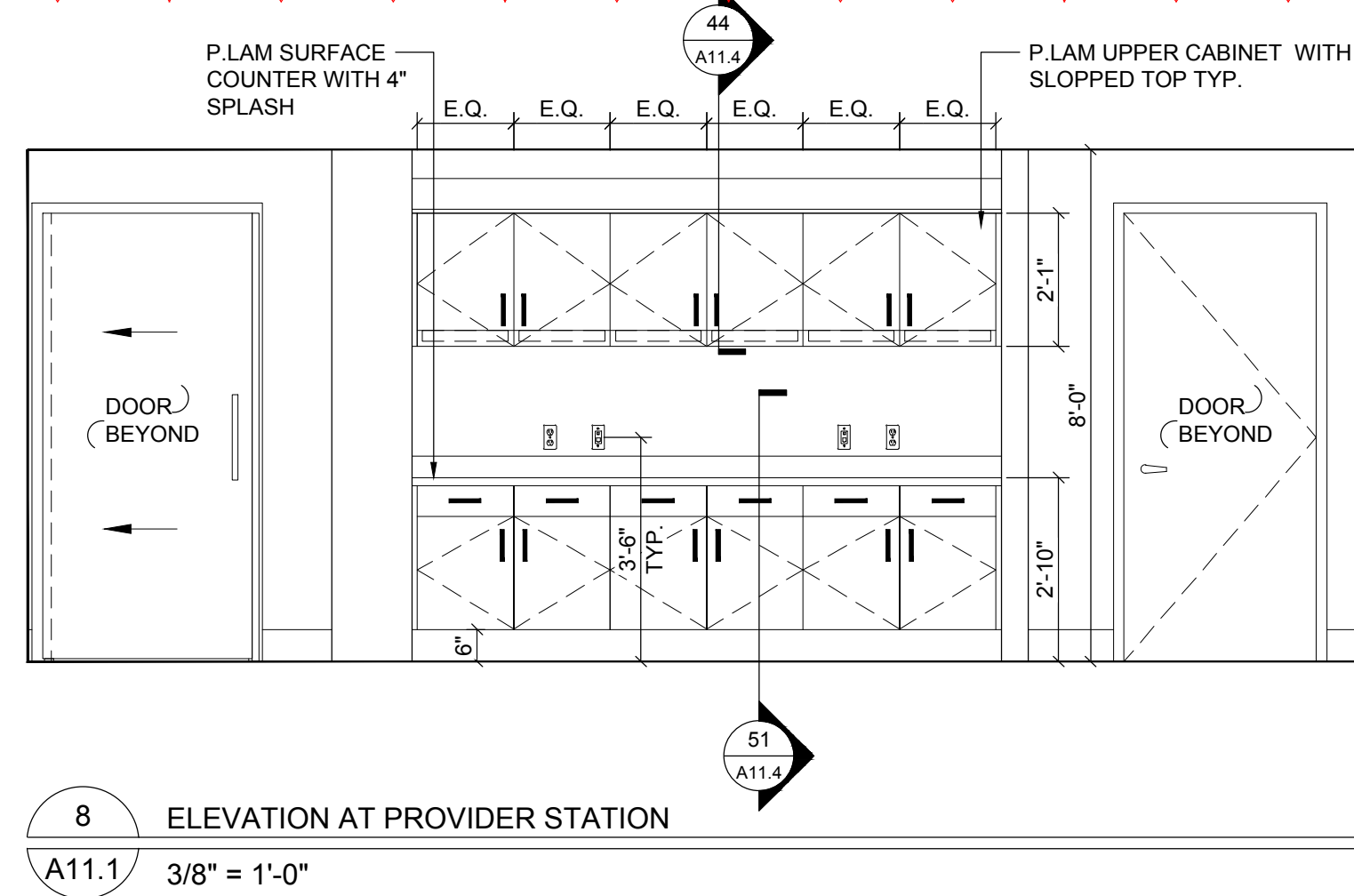
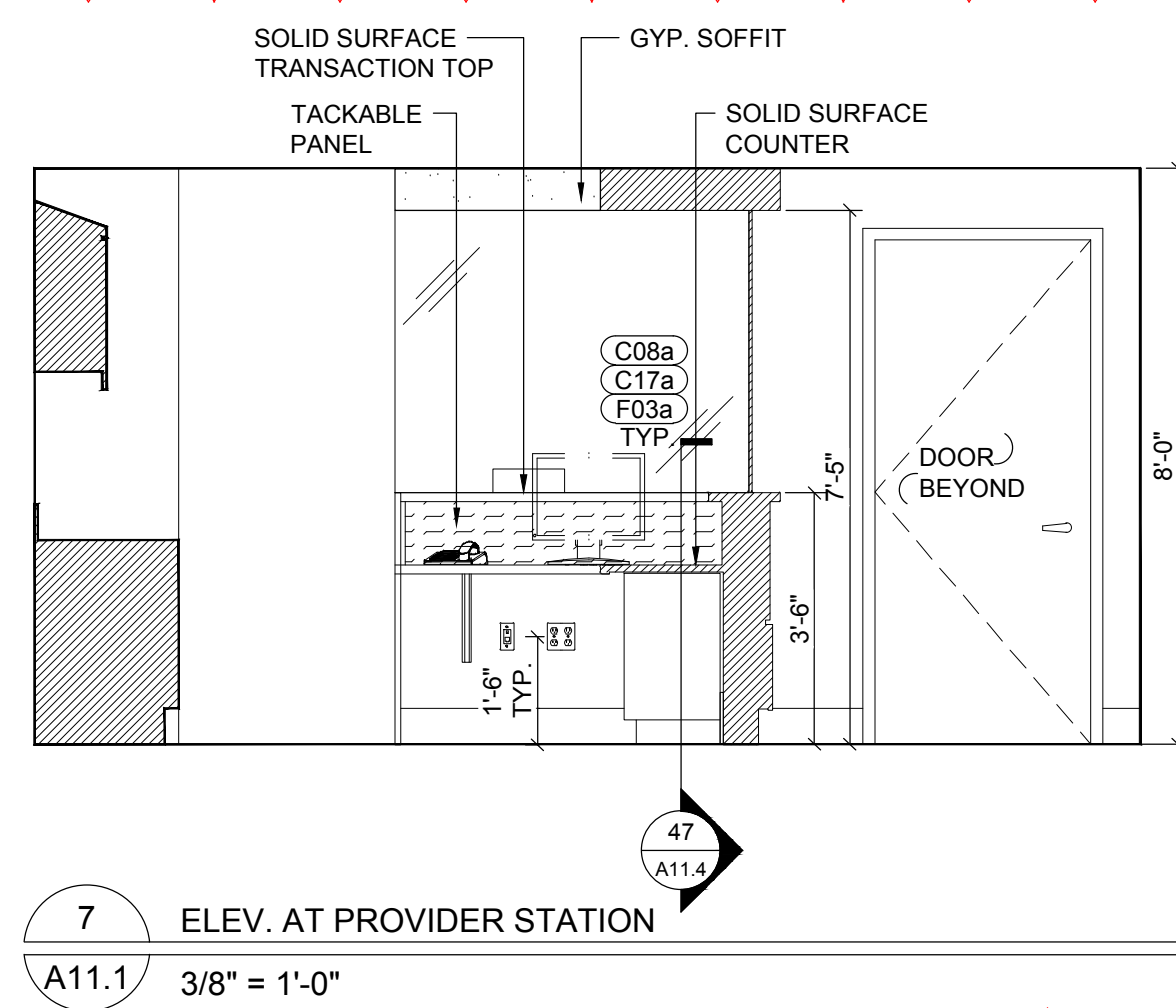
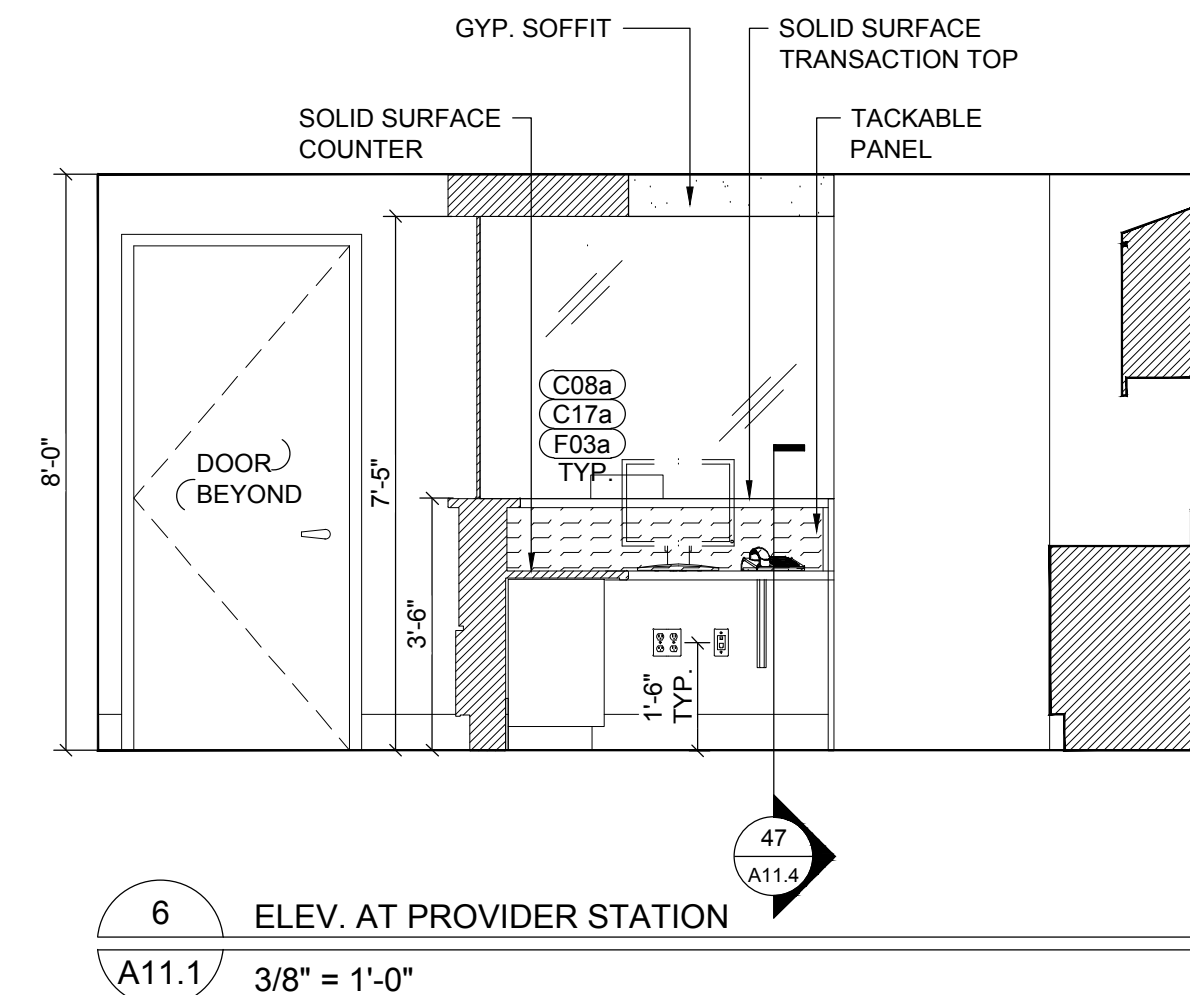
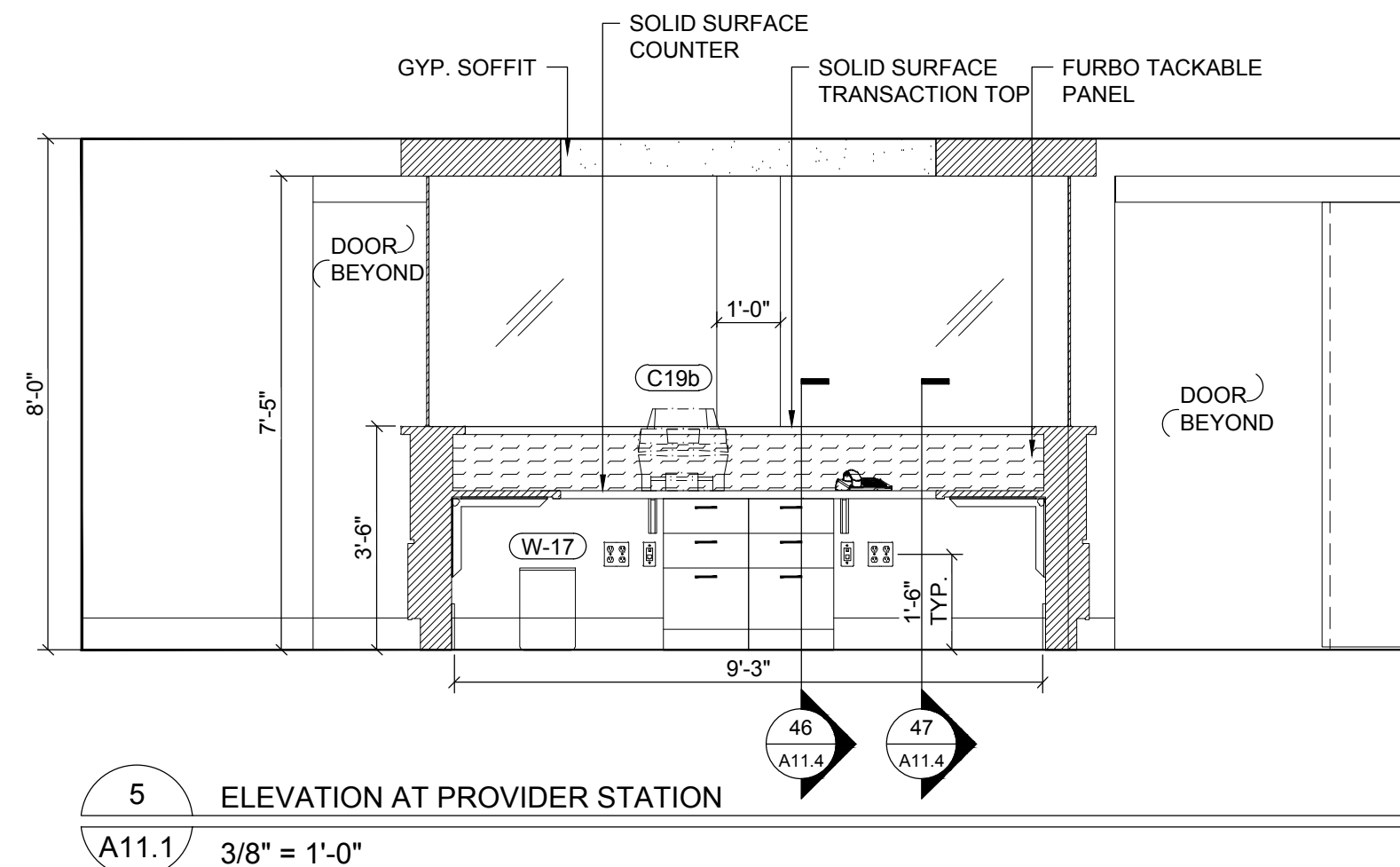
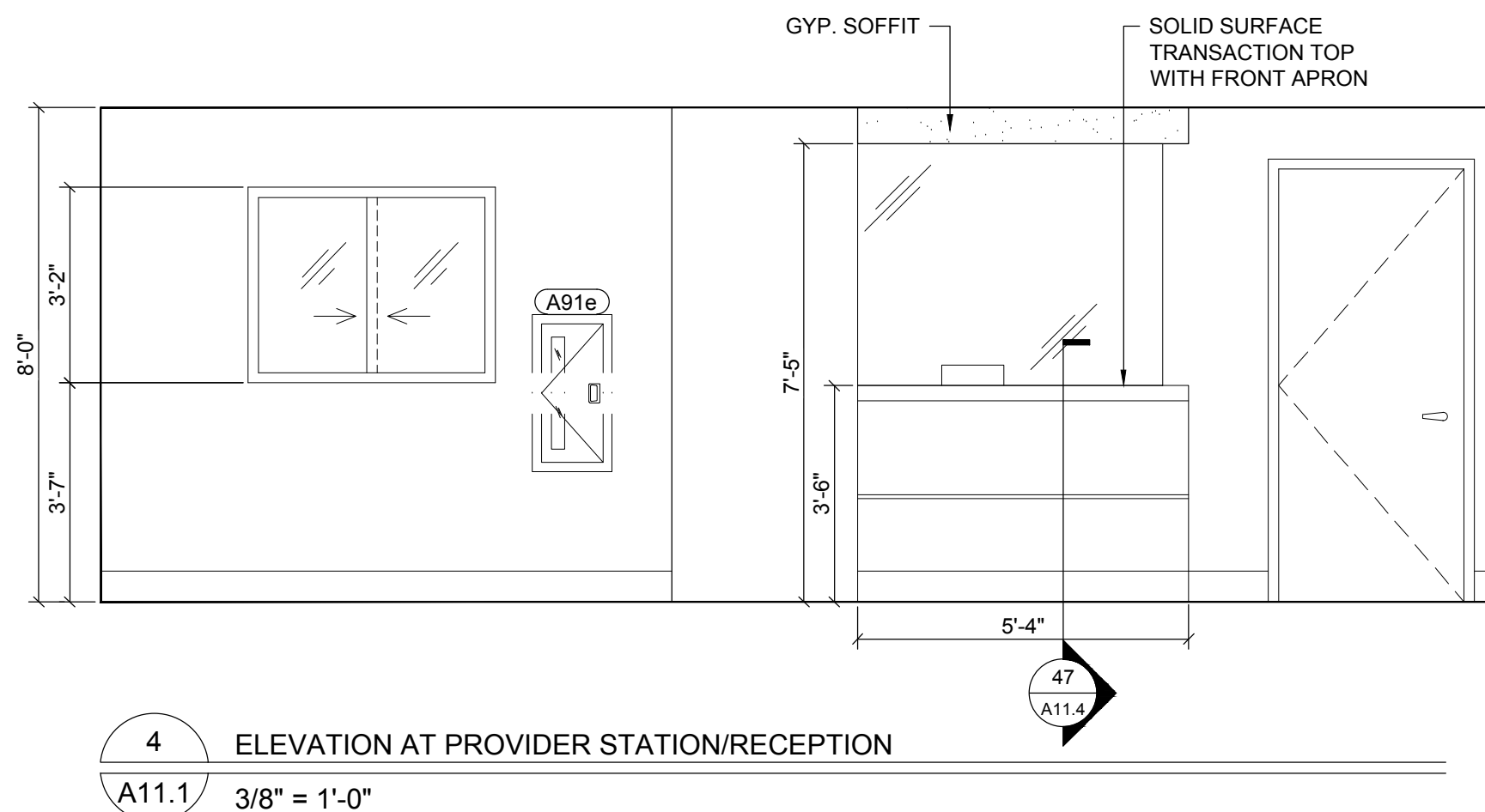
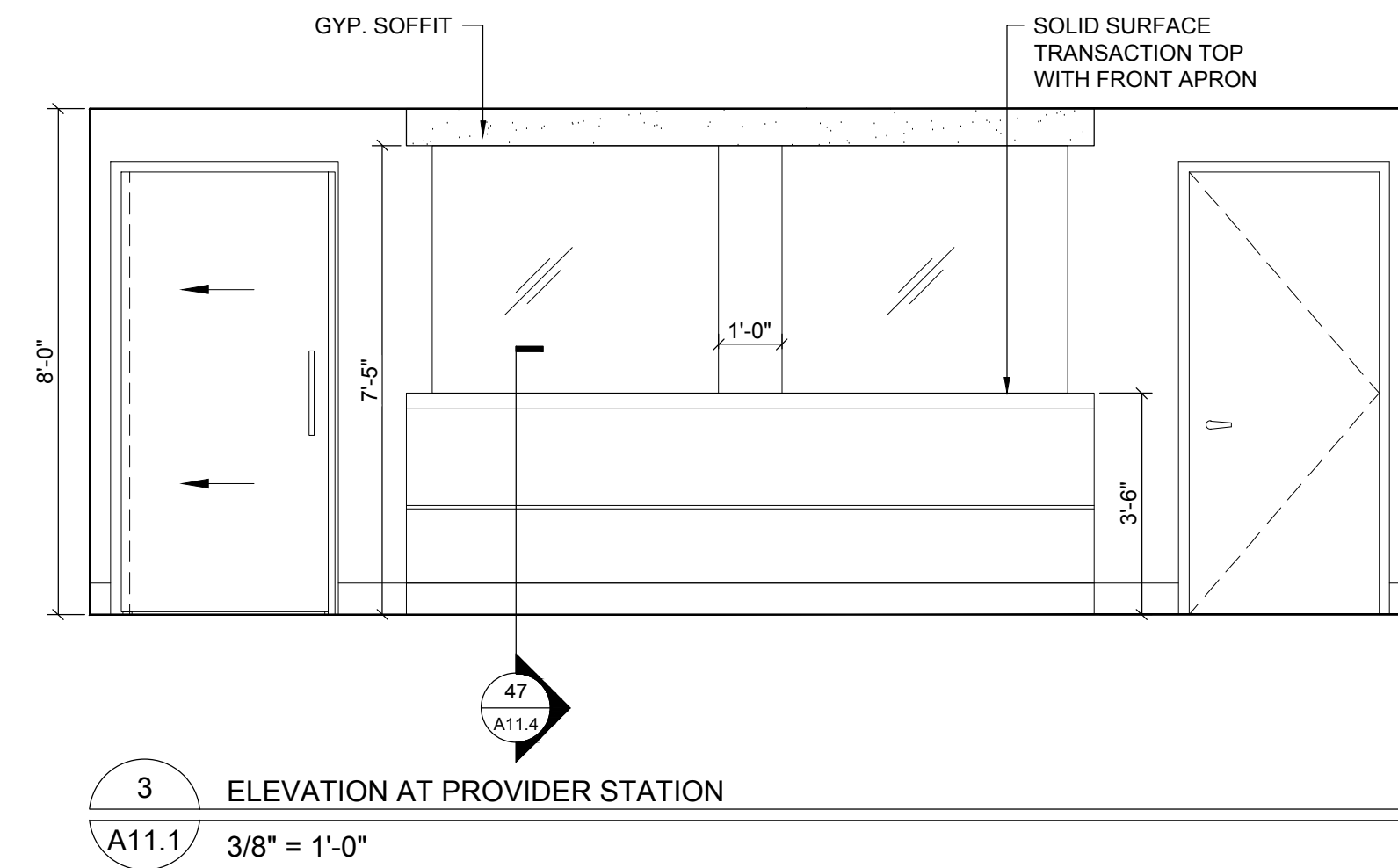
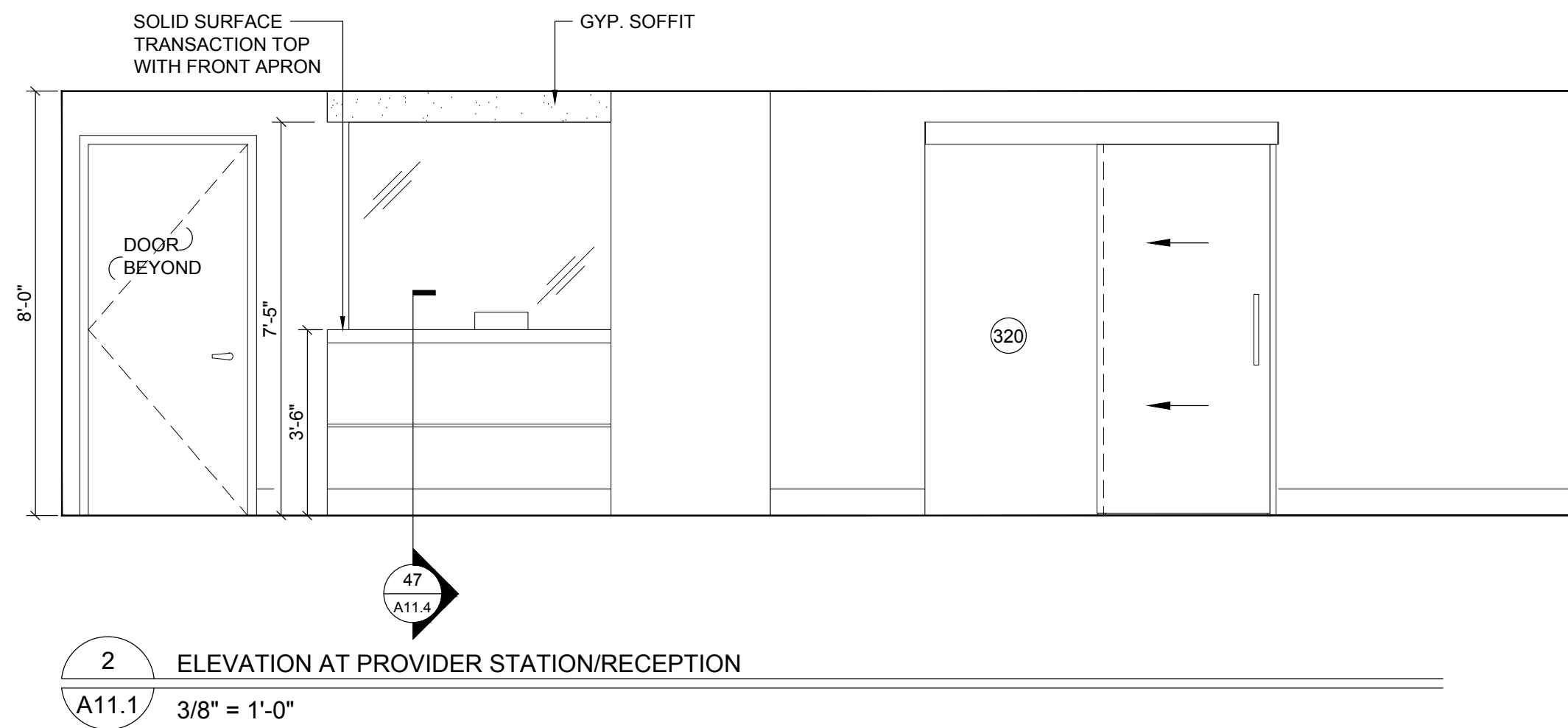
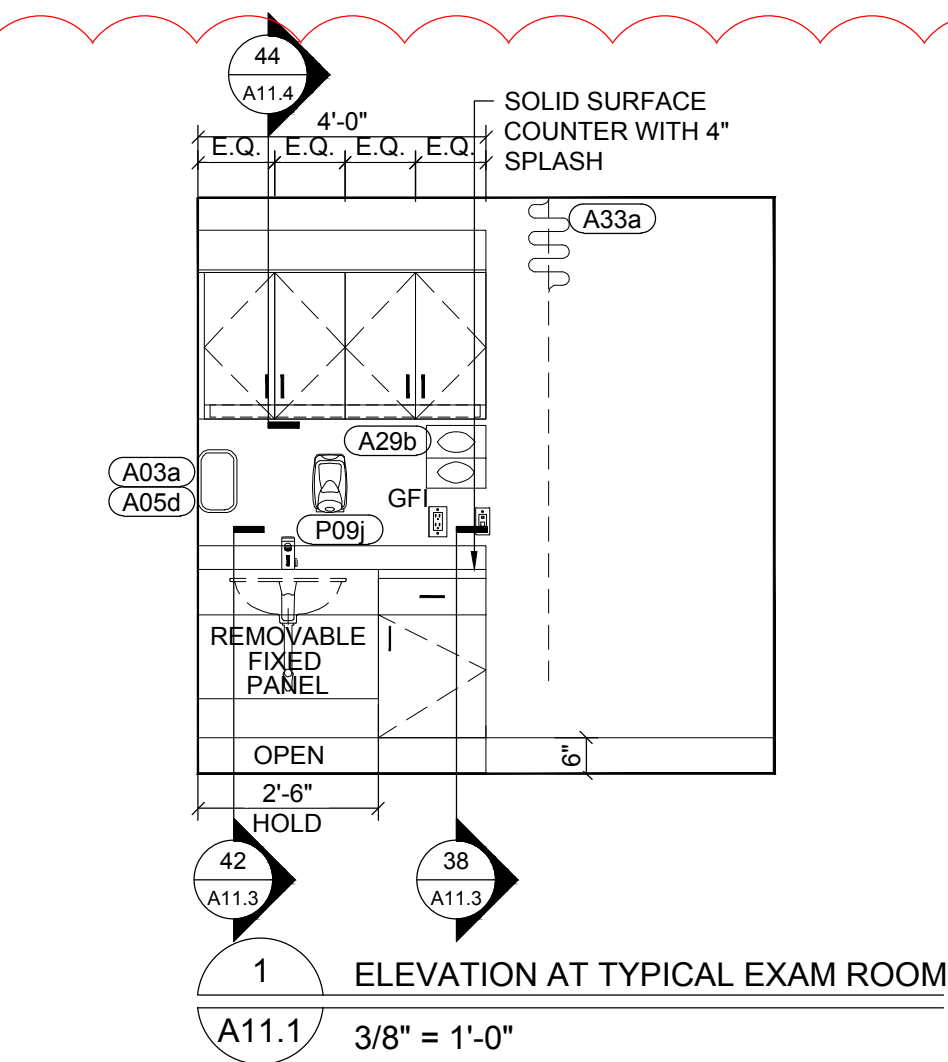
IT IS A VIOLATION OF THE LAW FOR ANY PERSON, UNLESS ACTING UNDER THE DIRECTION OF A LICENSED ARCHITECT, TO ALTER THIS DOCUMENT IN ANY WAY. IF ALTERED, THE ALTERING ARCHITECT SHALL AFFIX HIS SEAL AND THE NOTATION "ALTERED BY" FOLLOWED BY HIS SIGNATURE AND THE DATE OF SUCH ALTERATION, AND A SPECIFIC DESCRIPTION OF THE ALTERATION.

DRAWING TITLE:

INTERIOR
ELEVATIONS

PROJECT NUMBER	CON #
21035a	-
DATE	SCALE
02/06/2022	AS NOTED
DRAWING NUMBER	

A11.1



KEY PLAN: NOT TO SCALE



ARCHITECT

pds
Pomario Design Studio Architecture, PLLC
Michael A. Pomario, Architect
19 Front Street
Newburgh, NY 12550
33 Irving Place, 3rd Floor
New York, NY 10004

New York License No.: 019680
Telephone: 845.561.0448
Facsimile: 845.561.0446
pds@HealthCareDesign.com
www.healthcaredesign.com

MEP ENGINEER



Mechanical/Electrical Engineering Consultants

Schenectady | Rochester | Buffalo | Syracuse

433 STATE STREET, SUITE 410
SCHENECTADY, NY 12305

518.533.2171
www.meengineering.com

STRUCTURAL ENGINEER

ISSUED DOCUMENTS:

[illegible]

SEAL

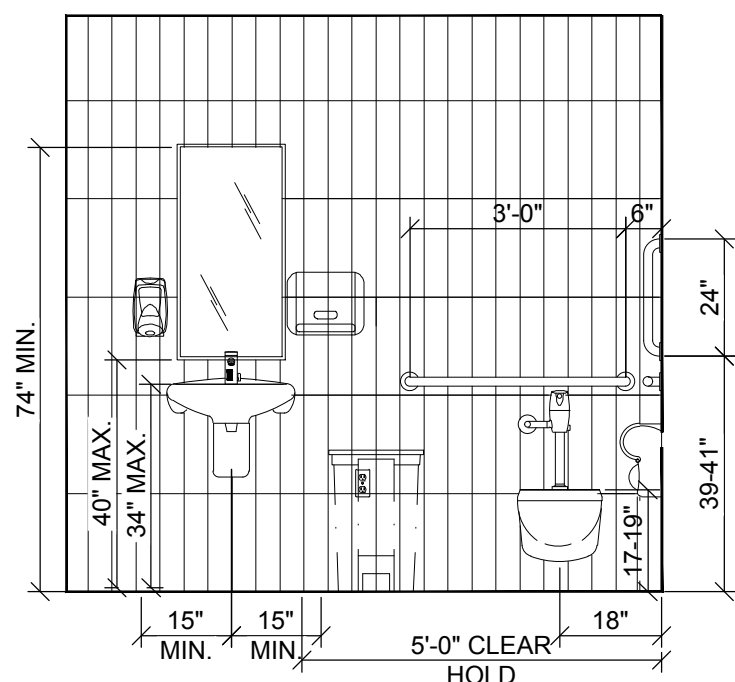
IT IS A VIOLATION OF THE LAW FOR ANY PERSON, UNLESS ACTING UNDER THE DIRECTION OF A LICENSED ARCHITECT, TO ALTER THIS DOCUMENT IN ANY WAY. IF ALTERED, THE ALTERING ARCHITECT SHALL AFFIX HIS SEAL AND THE NOTATION "ALTERED BY" FOLLOWED BY HIS SIGNATURE AND THE DATE OF SUCH ALTERATION, AND A SPECIFIC DESCRIPTION OF THE ALTERATION.

DRAWING TITLE:

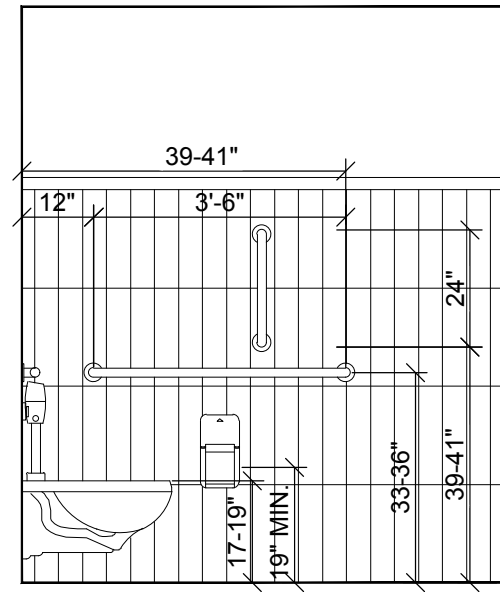
INTERIOR
ELEVATIONS

PROJECT NUMBER	CON #
21035a	-
DATE	SCALE
02/06/2022	AS NOTED
DRAWING NUMBER	

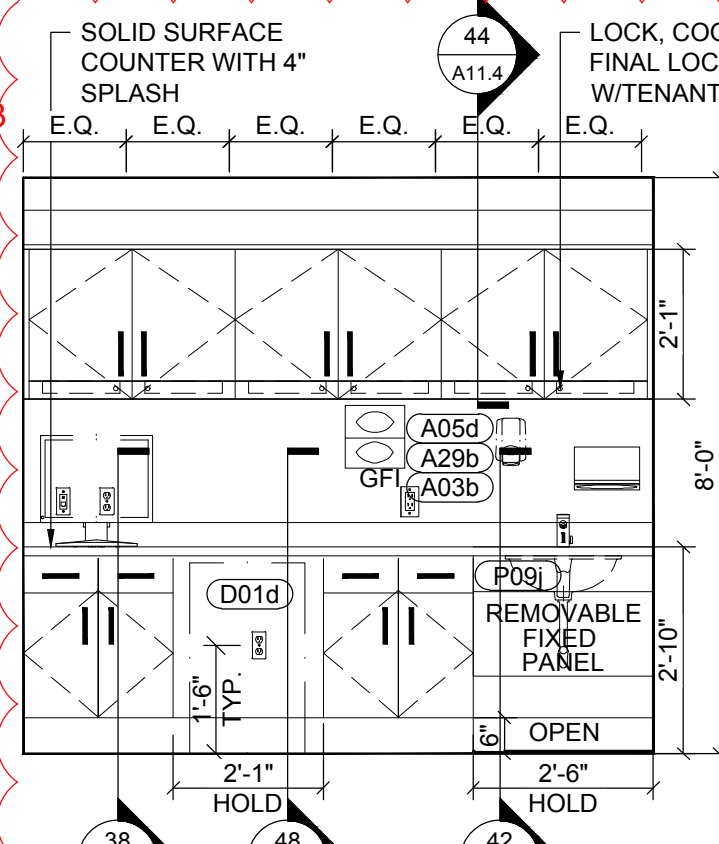
A11.2



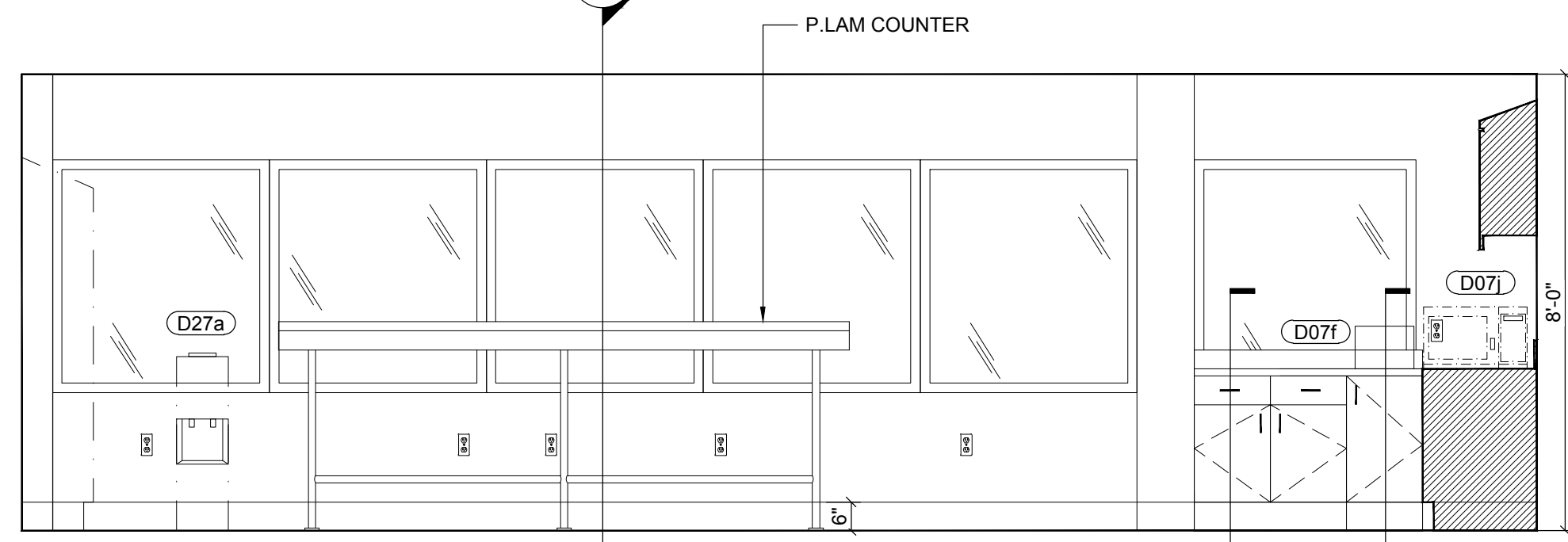
14	ELEVATION AT STAFF TOILET
A11.2	3/8" = 1'-0"



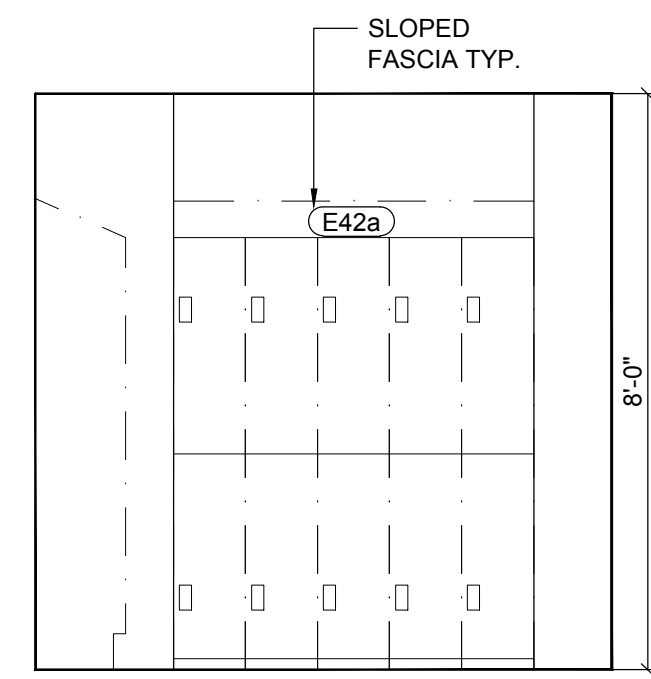
15	ELEVATION AT STAFF TOILET
A11.2	3/8" = 1'-0"



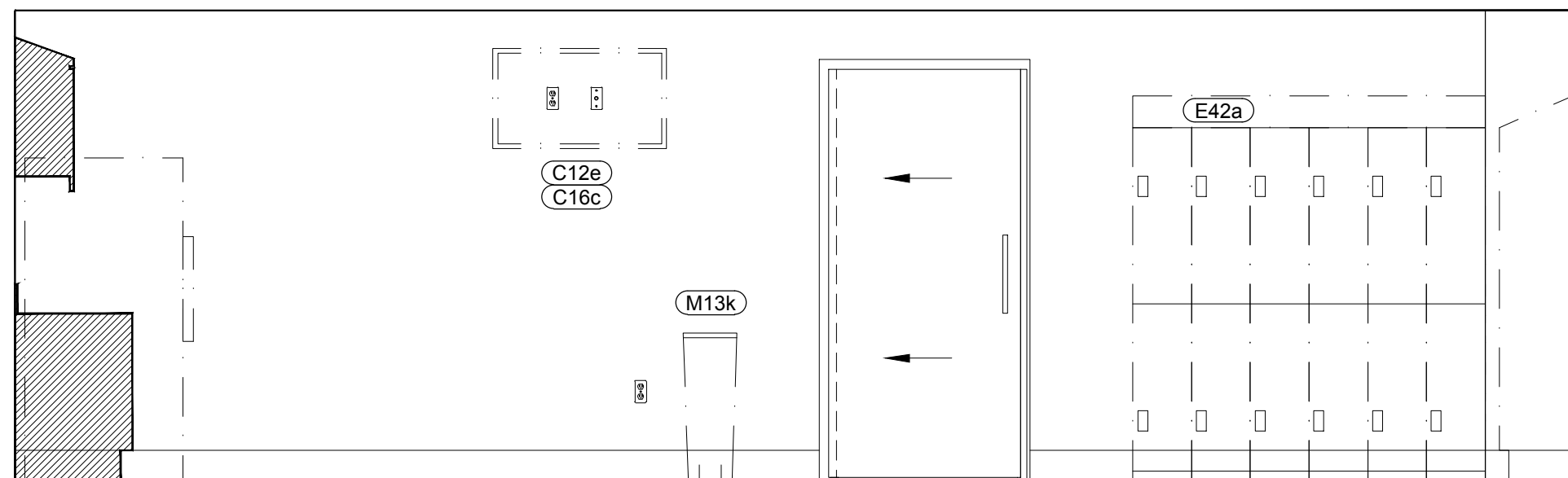
16	ELEVATION AT LAB
A11.2	3/8" = 1'-0"



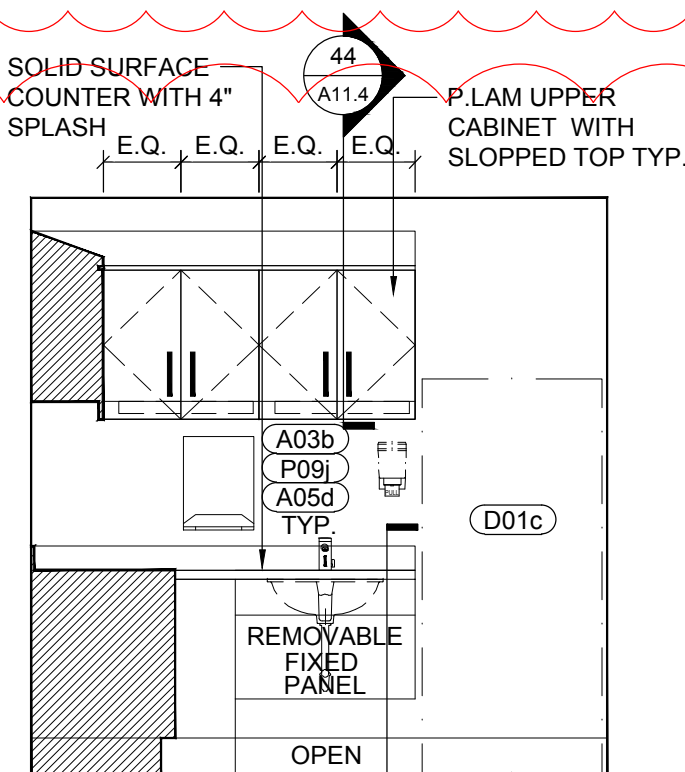
17	ELEVATION AT STAFF LOUNGE
A11.2	3/8" = 1'-0"



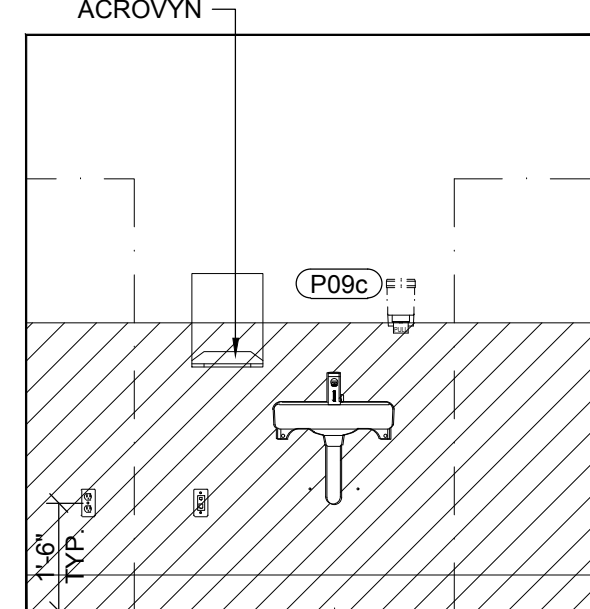
18	ELEVATION AT STAFF LOUNGE
A11.2	3/8" = 1'-0"



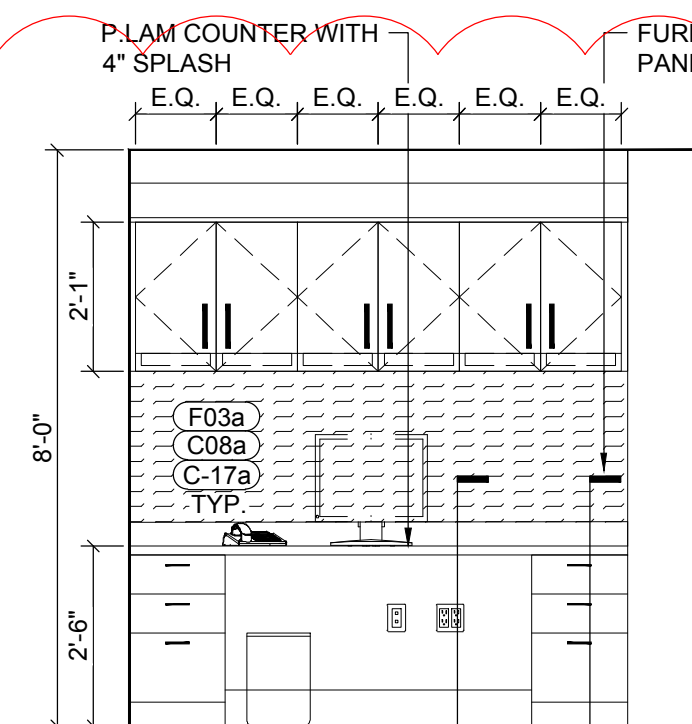
19	ELEVATION AT STAFF LOUNGE
A11.2	3/8" = 1'-0"



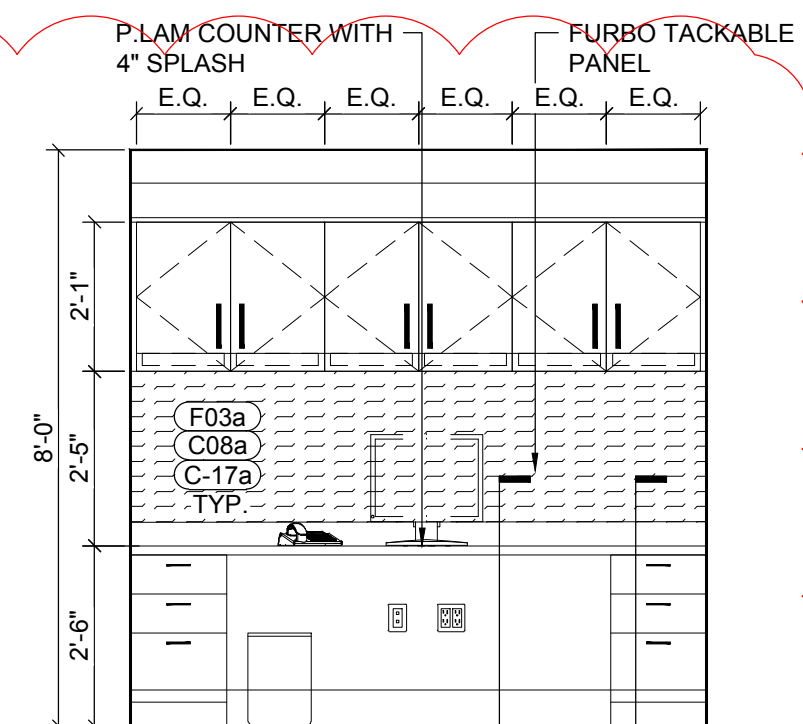
20	ELEVATION AT STAFF LOUNGE
A11.2	3/8" = 1'-0"



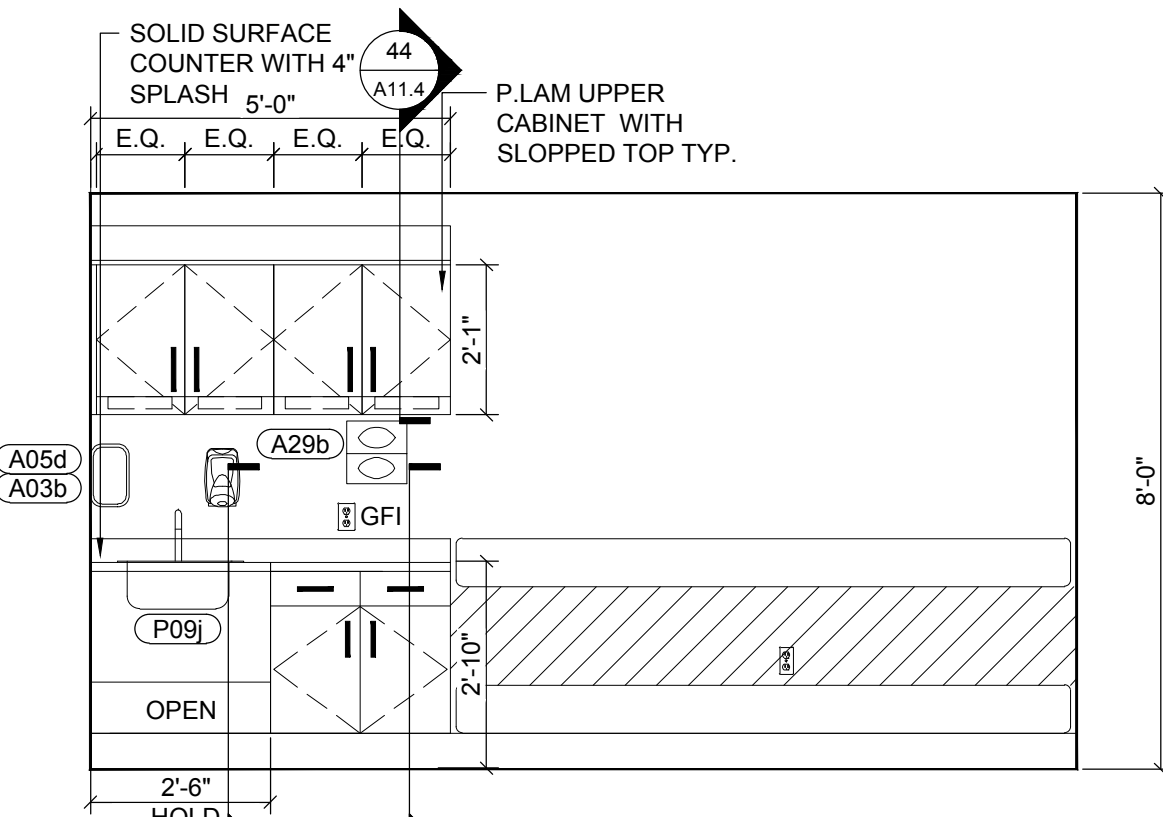
21	ELEVATION AT SOILED HOLDING
A11.2	3/8" = 1'-0"



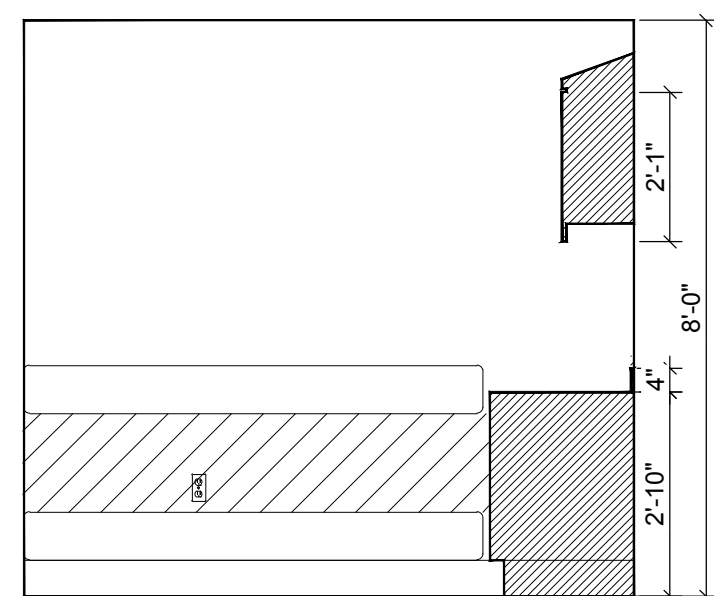
22	ELEVATION AT LPN OFFICE
A11.2	3/8" = 1'-0"



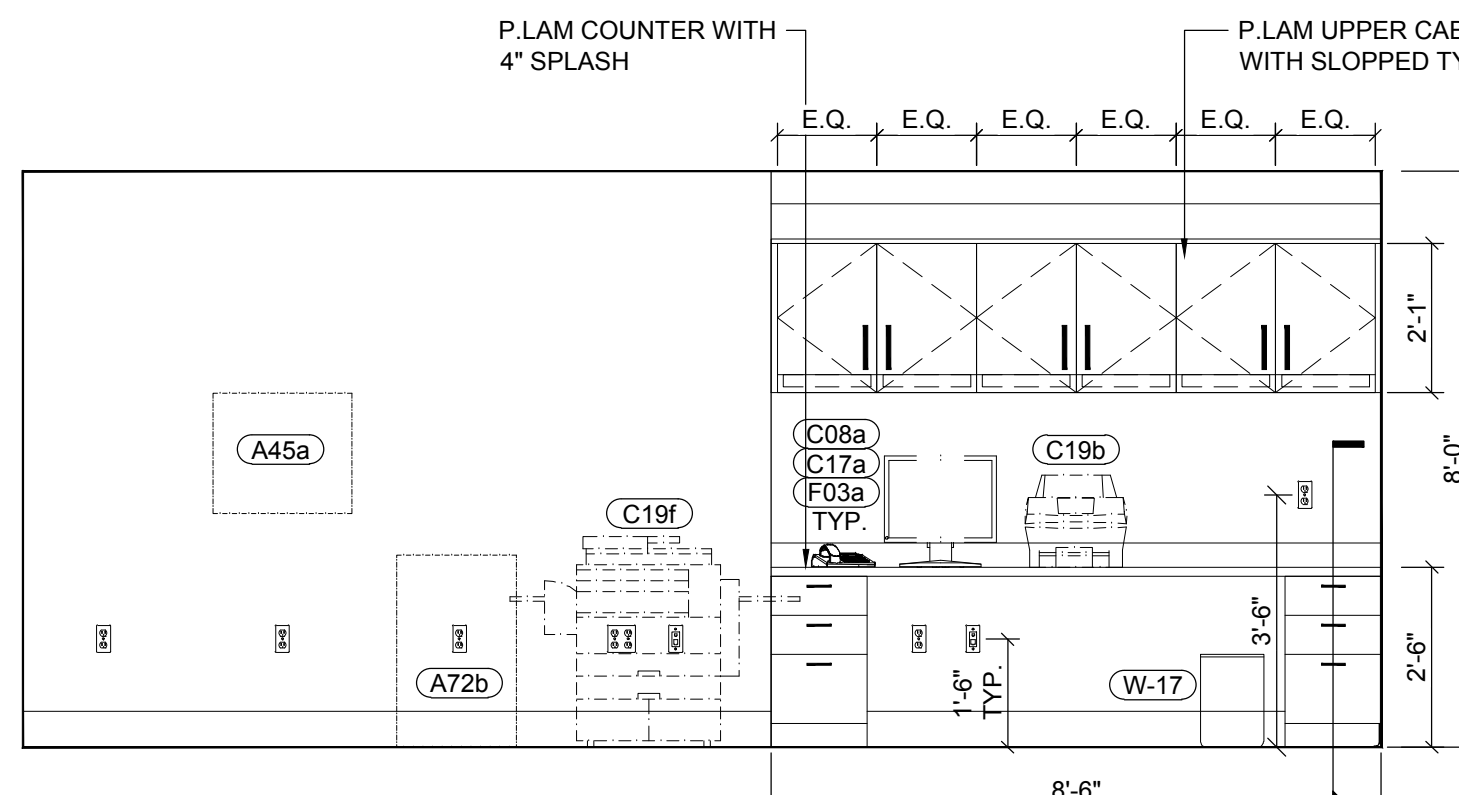
23	ELEVATION AT LPN OFFICE
A11.2	3/8" = 1'-0"



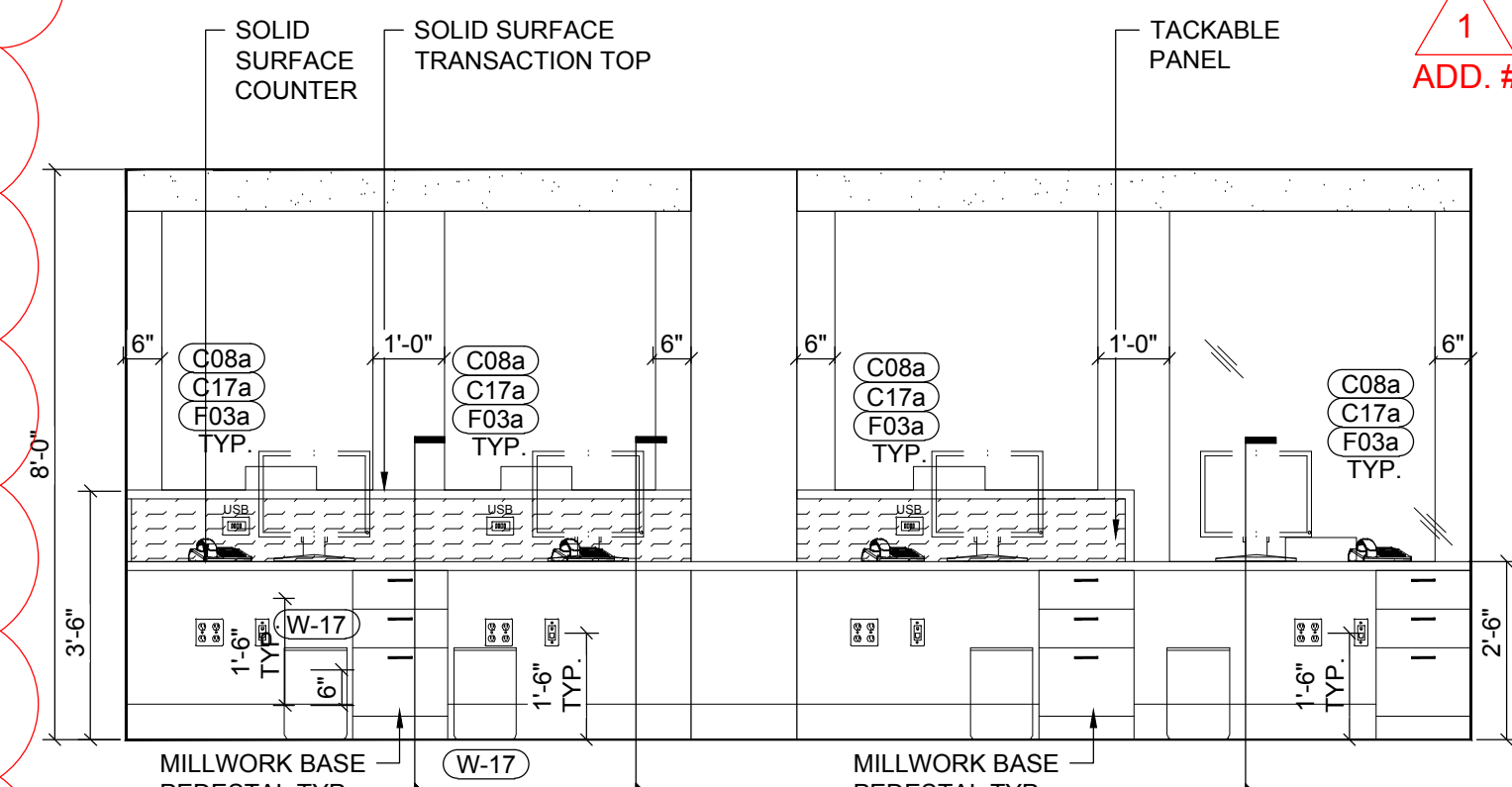
24	ELEVATION AT PROCEDURE ROOM
A11.2	3/8" = 1'-0"



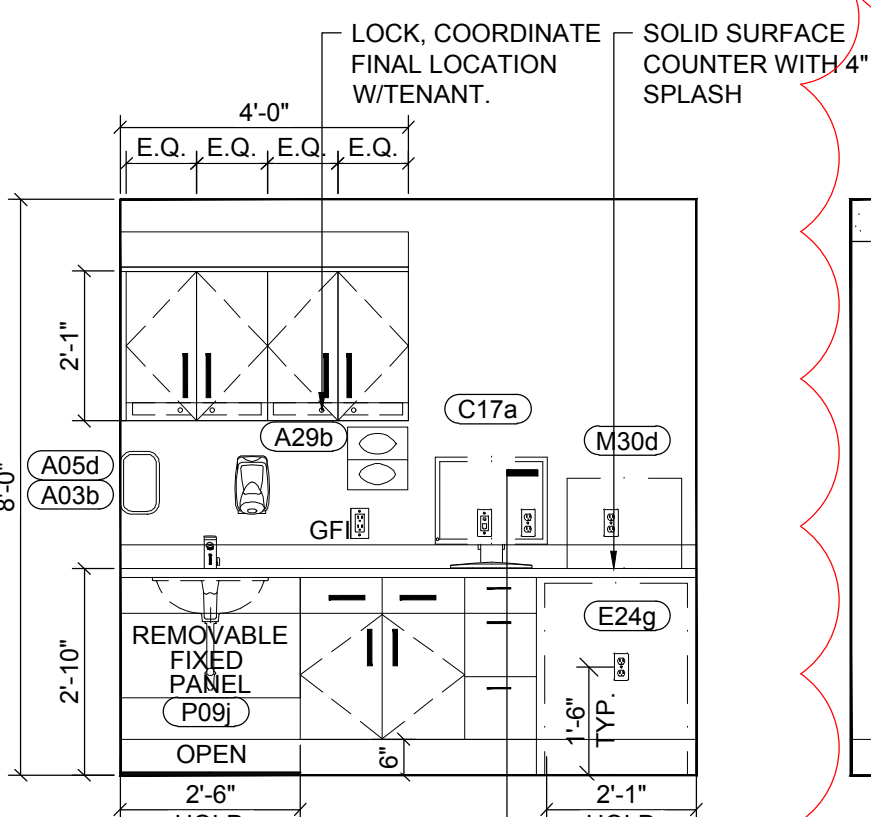
25	ELEVATION AT PROCEDURE ROOM
A11.2	3/8" = 1'-0"



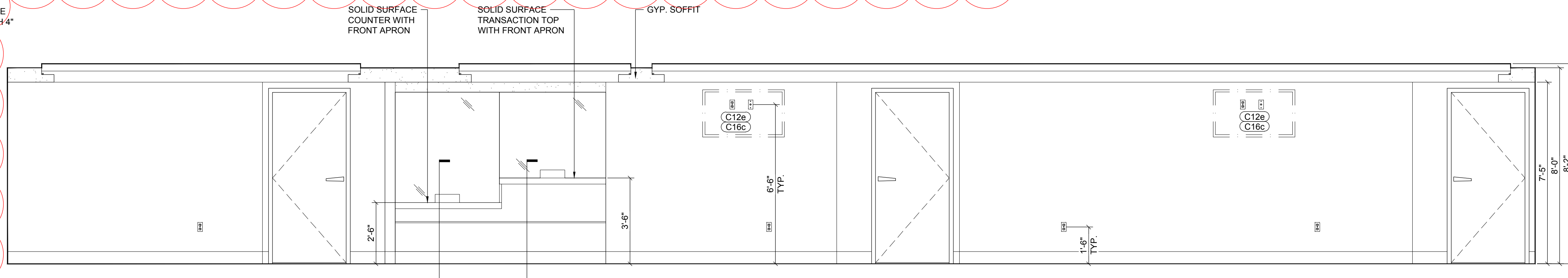
26	ELEVATION AT PROVIDER STATION
A11.2	3/8" = 1'-0"



27	ELEVATION AT PROVIDER STATION
A11.2	3/8" = 1'-0"



28 ELEV. AT L
A11.2 $3/8" = 1'-0"$



29	ELEVATION AT WAITING
A11.2	3/8" = 1'-0"

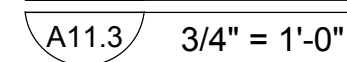
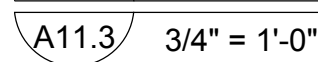
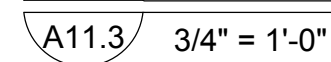
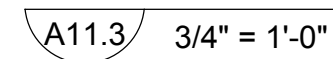
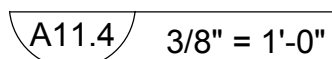
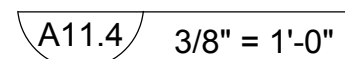
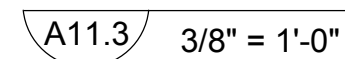
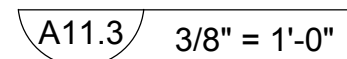
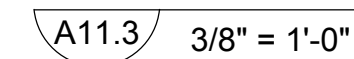
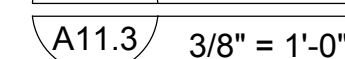
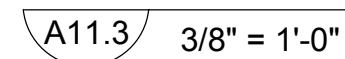
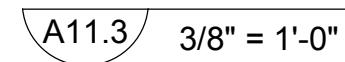
1
ADD. #03

A diagram showing a cross-section of a mechanical part. The part has a complex shape with a central rectangular cutout and a smaller rectangular feature on the left. The right side of the part is hatched with diagonal lines. A label 'AREA OF WORK' with a leader line points to a specific point on the hatched surface.



PROJECT NUMBER	CON #
21035a	-
DATE	SCALE
02/06/2022	AS NOTED
DRAWING NUMBER	

A11.3



1
ADD. #03

A11.4



1
ADD. #03